



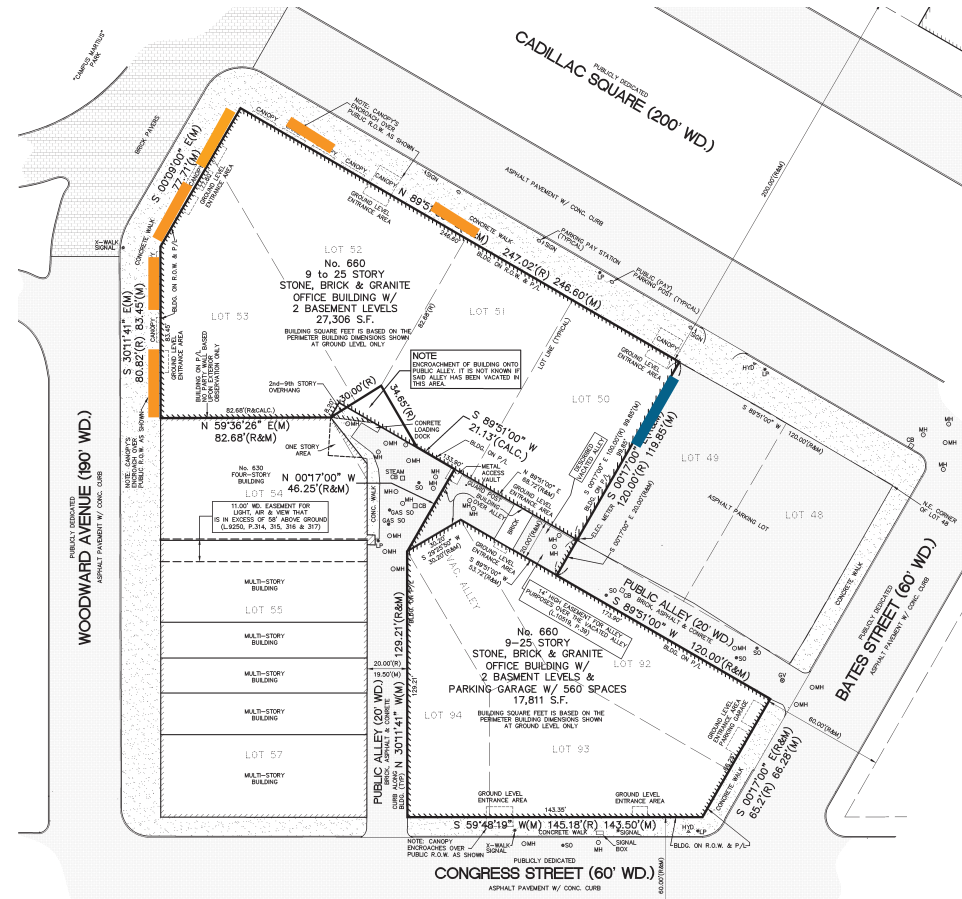
# 660 WOODWARD PERMIT APPLICATION

APRIL 2021

# SITE PLAN

## 660 WOODWARD

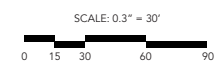
INFORMATION	
Owner Name	660 Woodward Associates LLC
Premise Parcel #(s)	01004105.
Zoning District	PCA: Major Commercial (MC)
Existing On-Premise Business Sign Size	20'x2', 8'-6"x2'-9", 24'x3'-6", 20'x2'-6"(x2), 44'-6"x1', 9'-3"x2'-9"
Existing On-Premise Business Sign Area	317 S.F. Total
Proposed Off-Premise Advertising Sign Size	112' H x 62.5' W
Proposed Off-Premise Advertising Sign Area	5,000 S.F.
Proposed Sign Qualification	Super
Proposed Sign Setback from Closest ROW	120' from Bates Street
Total Street Frontage	407 L.F.



- LEGEND**
- ASPH = Asphalt
  - CONC = Concrete
  - CB = Catch Basin
  - CO = Clean Out
  - GV = Gate Valve
  - W = Water Shut-off
  - MH = Man Hole
  - HYD = Hydrant
  - LP = Light Pole
  - UP = Utility Pole
  - L = Landscape
  - OH LINES = Overhead Lines
  - TRANS = Transformer
  - PH = Physically Handicapped
  - P/L = Property Line
  - ROW = Right of Way
  - SAH = Sanitary Sewer
  - STM = Storm Sewer
  - WM = Water Main
  - CL = Center line
  - FI = Found Iron
  - S.I. = Set Iron
  - R = Record Measurement
  - M = Surveyed Measurement
- All UTILITIES are underground unless otherwise noted.

**KEY**

- Existing On-Premise Business Sign
- Proposed Off-Premise Advertising Sign



**SITE PLAN**

# NORTH ELEVATION

660 WOODWARD

## EXISTING ON-PREMISE BUSINESS SIGNS

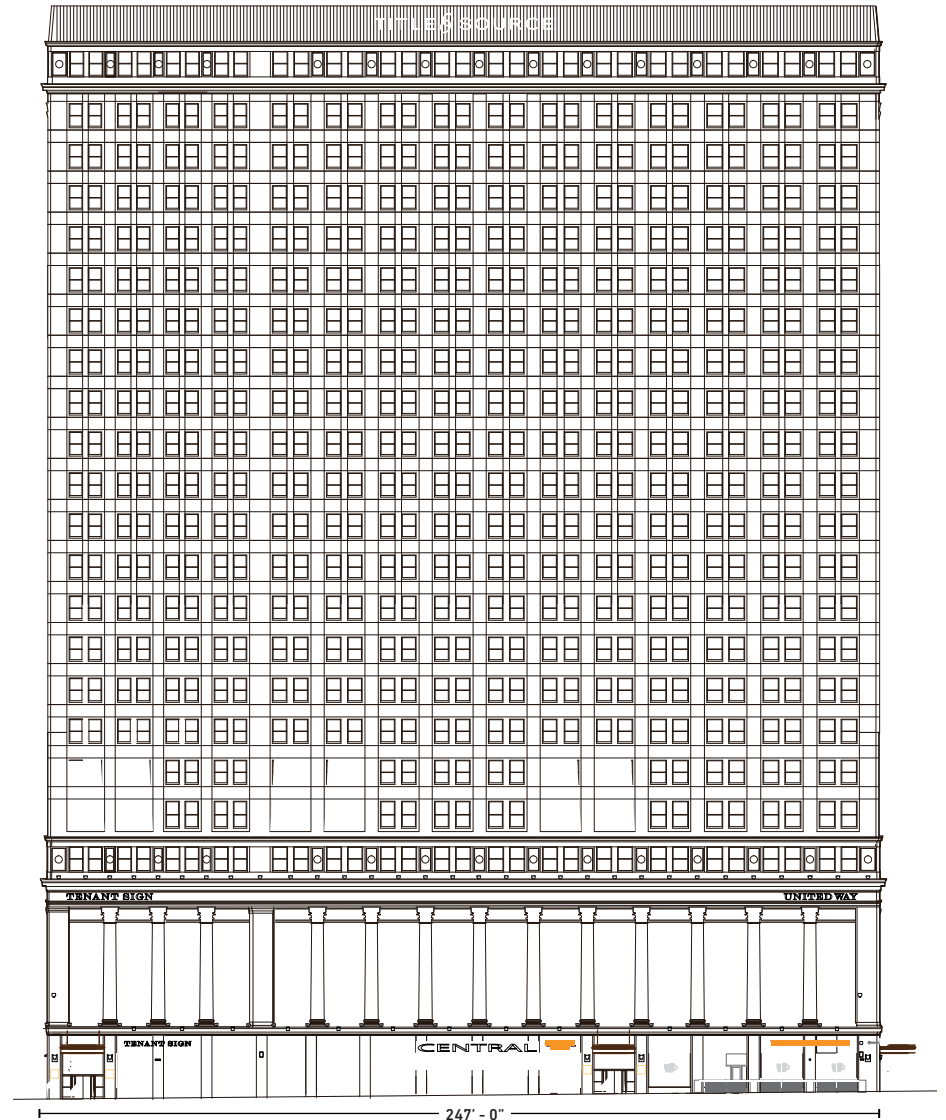
**ROASTING PLANT SIGN AREA:** 40 SQ. FT.

**CENTRAL KITCHEN SIGN AREA:** 23.5 SQ. FT.

**TOTAL SIGN AREA:** 63.5 SQ. FT.

**ROASTING PLANT** 2'-0"

**CENTRAL** 2'-9"  
KITCHEN + B A R 8'-6"



CADILLAC SQUARE

# WEST ELEVATION

660 WOODWARD

## EXISTING ON-PREMISE BUSINESS SIGNS

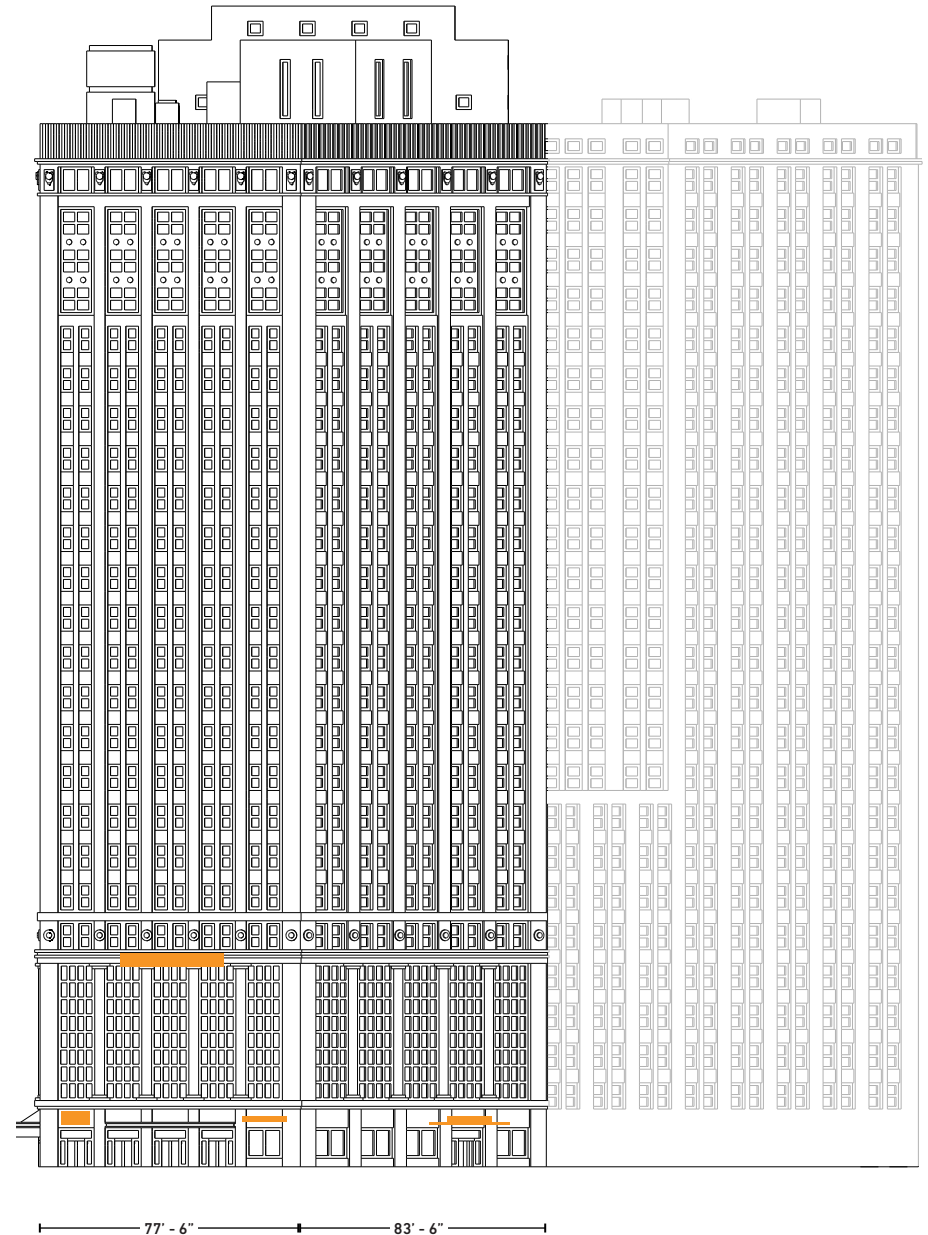
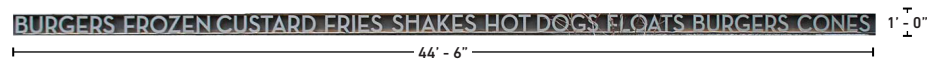
**HONIGMAN SIGN AREA:** 84 SQ. FT.

**ROASTING PLANT SIGN AREA:** 25 SQ. FT.

**SHAKE SHACK LOGO SIGN AREA (X2):** 50 SQ. FT. (X2)

**SHAKE SHACK TEXT SIGN AREA:** 44.5 SQ. FT.

**TOTAL SIGN AREA:** 253.5 SQ. FT.



WOODWARD AVE

# EAST ELEVATION

660 WOODWARD

## PROPOSED OFF-BUSINESS ADVERTISING SIGN

**PROPOSED NEW SIGN SIZE:** 112' H X 62.5' W

**PROPOSED NEW SIGN AREA:** 5,000 SQ. FT.

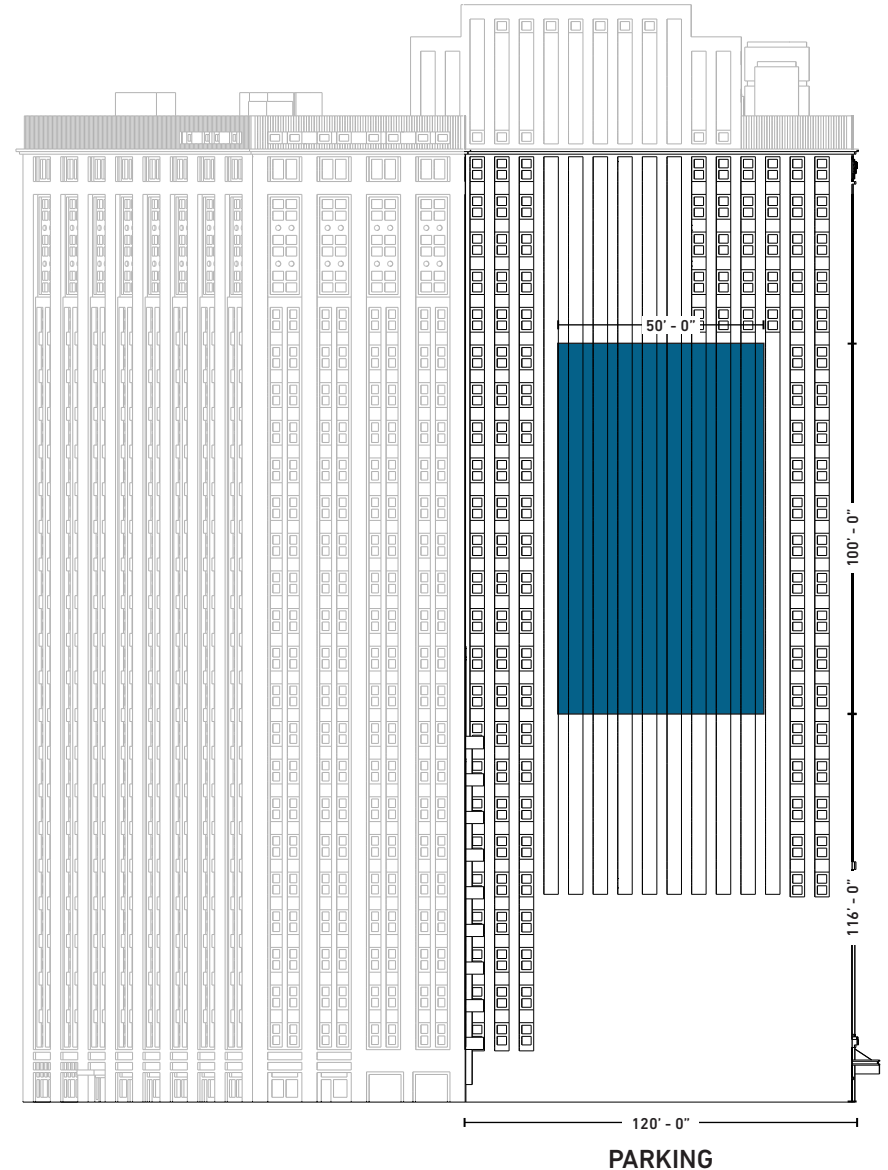
### PROPOSED SIGN CONSTRUCTION TYPE:

STRETCHED MESH VINYL ANCHORED TO BUILDING IN MORTAR EXCLUSIVELY

### PROPOSED SIGN ILLUMINATION:

EXTERNAL SURFACE MOUNTED LIGHTING

### PROPOSED SIGN MOTION: STATIC



# SIGNAGE INSTALL SPECIFICATIONS

660 WOODWARD

## MANUFACTURER ANCHOR SPEC:

STAINLESS STEEL WEDGE ANCHOR - SEE  
ADDITIONAL DETAILS ON PAGE 8.



Stainless Steel  
Wedge Anchor

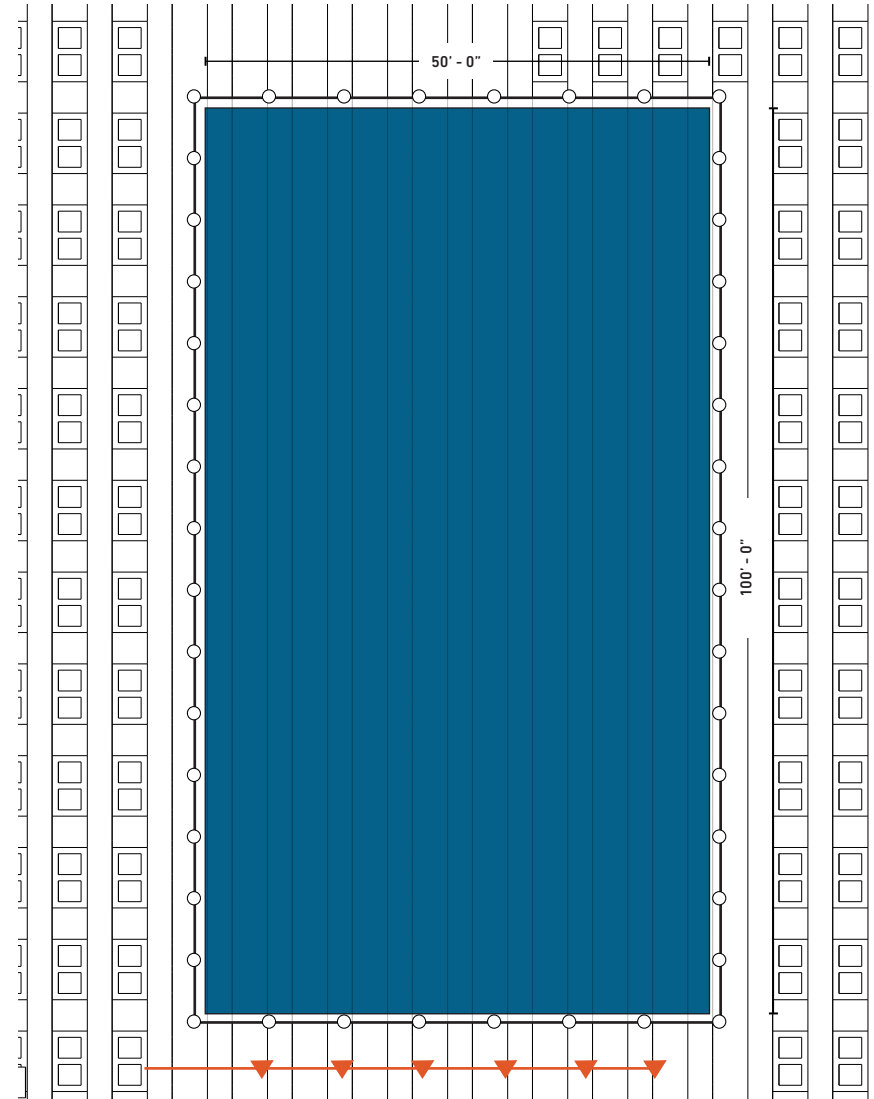
**SIZE OF ANCHORS:** 3" TO 4" L X 3/8" D

- **AMOUNT OF ANCHOR POINTS:** (48) TOTAL - SEE  
ADDITIONAL DETAILS ON PAGE 8. EACH CORNER  
INCLUDES (2) ANCHOR POINTS.

- ▼ **INSTALLED LIGHTS:** (6) TOTAL - CONDUIT TO FLOOD  
LIGHT FIXTURES FACE MOUNTED TO BUILDING ALONG  
MORTAR JOINTS. SEE LIGHT SPEC ON PAGE 7.

**REPARATIONS TO AREAS AFFECTED:** TUCK POINT  
ALL MORTAR JOINTS AFFECTED BY SIGNAGE  
INSTALLATION

\*Any work related to advertising signage will not cause permanent  
impacts to facade



# SIGNAGE MATERIAL + LIGHTING

660 WOODWARD

## SIGNAGE SPECIFICATIONS



### Technical Data Sheet UltraMesh® 100

UltraMesh® 100 is a 10 oz. PVC coated polyester mesh, printable on two sides with UV and Solvent inks. Allowing 30% air-flow through, UltraMesh 100 is best suited for large images on building, stadium and fence wraps, murals, signs, banners, protective barriers for scaffolding as well as theatrical and TV backdrops. Available in seamless wide-widths ranging from 126"- 196".

#### Material Details

CHARACTERISTICS	TEST METHOD	METRIC	ENGLISH
Support Cloth	DIN 60001	Polyester	Polyester
Yarn dtex	DIN EN ISO 2060	1100 x 1100 dtex	1000 x 1000 denier
Type of Coating	N/A	PVC	PVC
Total Weight	DIN EN ISO 2286-2	340 g/m <sup>2</sup>	10 oz/yd <sup>2</sup>
Tensile Strength	DIN EN ISO 1421	204 x 184 kgF/5cm	225 x 203 lbs/in
Tear Strength (warp/weft)	DIN 53363	2500 x 1300 kgF/5cm	168 x 55 lbs/in
Flame Resistance	DIN 75200	NFPA701, Title 19, CSFM, B1	
Low Temperature (No Crack at:)	ISO 1876	Low at -30°C	Low at -22°F
RF Weldable (Heat Sealable)	DIN 53354	Yes	Yes
Air Permeability	ISO 9237	1580 liter/m <sup>2</sup> /sec	
Fungus Resistant	ASTM G21	Treated	

#### Applications

	Back-lit	Banner	Billboard	Block-out	Building Wrap	Display Systems	Truckside
Applications		■			■		

#### Ink Printability

Solvent	Eco Solvent	UV	Screen Printing	Dye Transfer	Dye Direct
■	□	■	■		

Key: ■ - Excellent □ - Good

The information on physical and chemical characteristics is based upon tests believed to be reliable. The values are intended only as a source of information. A legally binding guarantee of specific properties is not to be inferred from our specifications. They are given without warranty and do not constitute a warranty. The purchaser should independently determine, prior to use, the suitability of this material for his/her specific purpose. (Data represents averages and is not intended for use as a specification.)

**ULTRAFLEX**  
www.ultraflex.com  
Updated: 12/2008

**Ultraflex Headquarters**  
1578 Sussex Turnpike, Building 4  
Randolph, NJ 07869  
P. 973-627-8608 F. 973-627-8506

**Ultraflex Europe Ltd.**  
Unit 2 Hardwick Rd Industrial Park  
Great Gransden  
Bedfordshire, England SG193BJ  
P. +44 1767 677100 F. +44 1767 677190

**Ultraflex Mexico**  
Avenida 316-B Col. Granjas Mexico  
Mexico City, 08400  
P. +52 5531-823-632 F. +52 5558-037-809

## LIGHTING SPECIFICATIONS

### FXLED150T



Color: Bronze

Weight: 20.9 lbs

Project:	Type:
Prepared By:	Date:

Driver Info		LED Info	
Type	Constant Current	Watts	150W
120V	1.39A	Color Temp	5000K (Cool)
208V	0.81A	Color Accuracy	72 CRI
240V	0.70A	L70 Lifespan	100,000
277V	0.60A	Lumens	20,686
Input Watts	163.60W	Efficacy	126.4 LPW

#### Technical Specifications

##### Listings

**UL Listed:**  
Suitable for wet locations. Suitable for mounting within 1.2m (4ft) of the ground.

**IESNA LM-79 & IESNA LM-80 Testing:**  
RAB LED luminaires and LED components have been tested by an independent laboratory in accordance with IESNA LM-79 and LM-80.

**DLC Listed:**  
This product is listed by Design Lights Consortium (DLC) as an ultra-efficient premium product that qualifies for the highest tier of rebates from DLC Member Utilities. DLC Product Code: P0000173K

##### LED Characteristics

**Lifespan:**  
100,000-hour LED lifespan based on IES LM-80 results and TM-21 calculations

**LEDs:**  
Long-life, high-efficacy, surface-mount LEDs

**Color Stability:**  
LED color temperature is warranted to shift no more than 200K in color temperature over a 5-year period

**Color Uniformity:**  
RAB's range of Correlated Color Temperature follows the guidelines of the American National Standard for Specifications for the Chromaticity of Solid State Lighting (SSL) Products, ANSI

##### Electrical

**Driver:**  
Constant Current, Class 2, 120-277V, 50/60 Hz, 120V: 1.39A, 208V: 0.81A, 240V: 0.70A, 277V: 0.60A

**THD:**  
1.95% at 120V, 8.2% at 277V

**Power Factor:**  
99.9% at 120V, 97.6% at 277V

**Note:**  
All values are typical (tolerance +/- 10%)

##### Construction

**IP Rating:**  
Ingress Protection rating of IP66 for dust and water

##### EPA:

2

**Ambient Temperature:**  
Suitable for -40°C (-40°F) to 40°C (104°F)

##### Lens:

Tempered glass lens included

##### Housing:

Die-cast aluminum housing and door frame

##### Mounting:

Heavy-duty Trunnion mount with stainless steel hardware

##### Finish:

Formulated for high durability and long-lasting color

##### Other

**Warranty:**  
RAB warrants that our LED products will be free from defects in materials and workmanship for a period of five (5) years from the date of delivery to the end user, including coverage of light output, color stability, driver performance and fixture finish. RAB's warranty is subject to all terms and conditions found at [rablighting.com/warranty](http://rablighting.com/warranty).

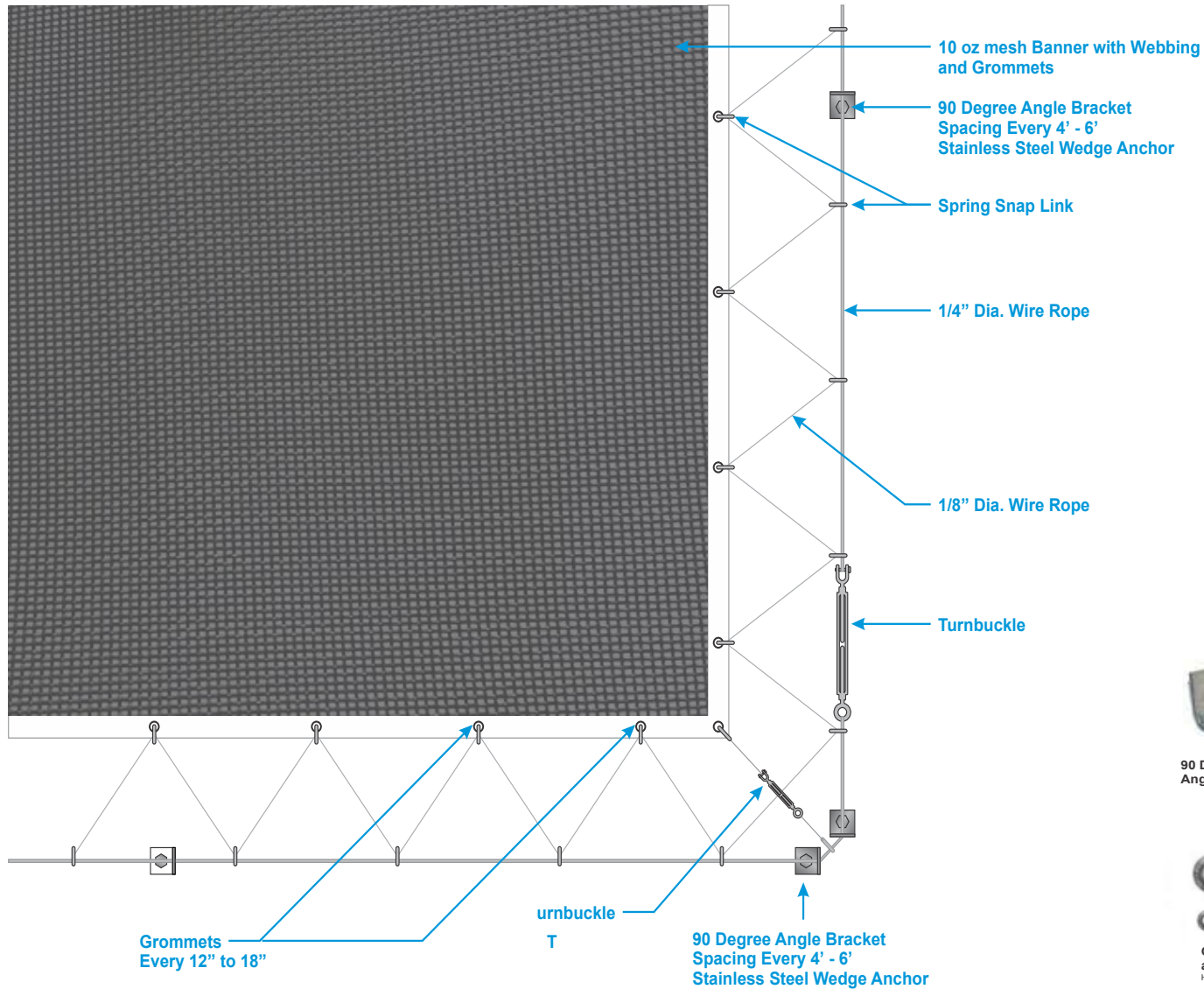
##### Buy American Act Compliance:

RAB values USA manufacturing! Upon request, RAB may be able to manufacture this product to be compliant with the Buy American Act (BAA). Please contact customer service to request a quote for the product to be made BAA compliant.

\*1 light fixture every 8' horizontally. Lighting Engineer to verify NITs meet ordinance prior to installation.

# SIGNAGE INSTALLATION

660 WOODWARD



**Banner with Webbing and Grommets**



**90 Degree 2-hole Wall Angle Bracket**



**Stainless Steel Wedge Anchor**



**Stainless Steel Wire Rope**  
 1/8" Dia. Breaking Strength = 1,780 Lbs  
 Weight Per 100' = 3.3 Lbs  
 1/4" Dia. Breaking Strength = 6,900 Lbs.  
 Weight Per 100' = 12.5 lbs



**Cable Zip Line Turnbuckle and Mini Turnbuckle**  
 High Quality Hot Galvanized, Drop Forged Steel



**3/16" Electro Galvanized Spring Snap Link**  
 Working Load Limit: 105 lbs.



# EXISTING CONDITIONS

660 WOODWARD



WEST ELEVATION



EAST ELEVATION



EAST ELEVATION



SOUTH ELEVATION

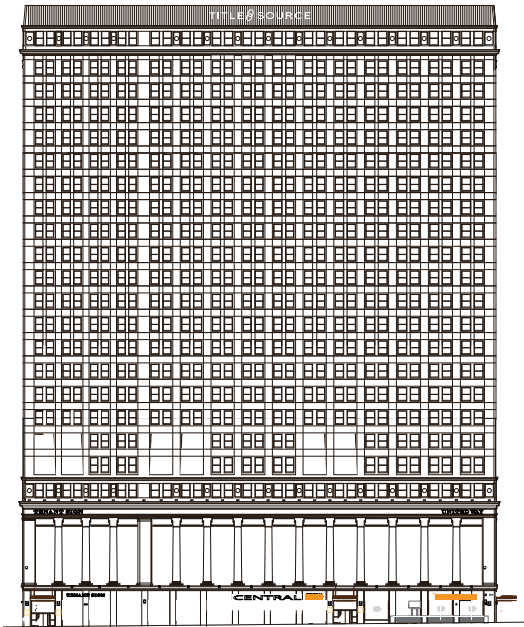


EAST ELEVATION

# SUMMARY

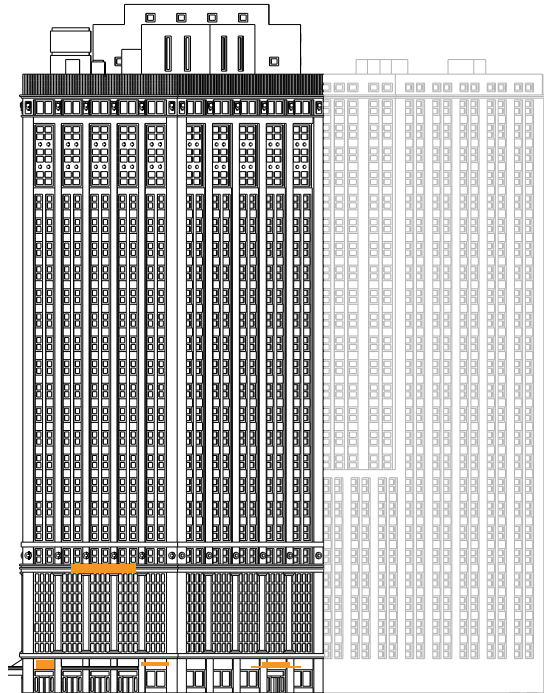
660 WOODWARD

## NORTH ELEVATION



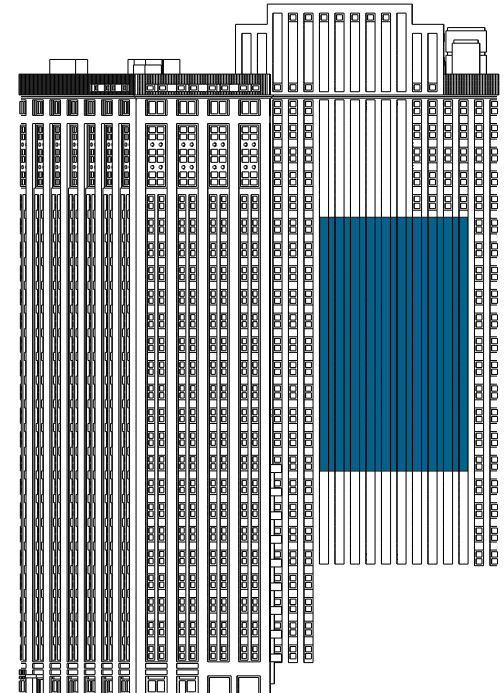
SIGN SUMMARY	
Existing Sign	Roasting Plant
Size & Area	2' H x 20' W ; 40 S.F.
Purpose	On-Premise Business
Existing Sign	Central Kitchen
Size & Area	2'-9" H x 8'-6" W ; 23.5 S.F.
Purpose	On-Premise Business

## WEST ELEVATION



SIGN SUMMARY	
Size & Area	Total: 253.5 S.F.
Purpose	On-Premise Business

## EAST ELEVATION



SIGN SUMMARY	
Proposed Sign	TBD
Size & Area	112' H x 62.5' W ; 7000 S.F.
Purpose	Off-Premise Advertising

# 660 WOODWARD

