

Good afternoon,

Staff has completed a review of the submitted material.

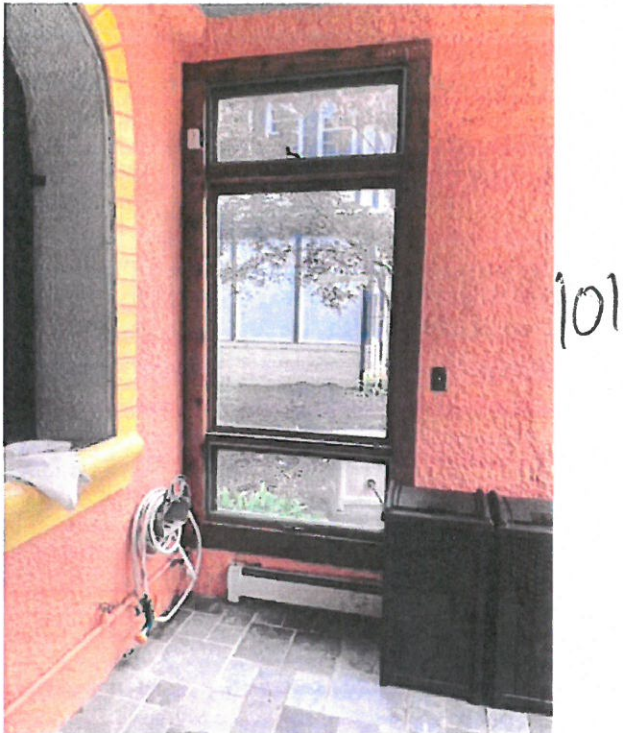
This will have to be approved by the Commission at a monthly meeting. Please note, it is unlikely that the Commission will approve windows of this material as they are not in-kind replacements of existing wood windows.

To complete the application, please submit the following items:

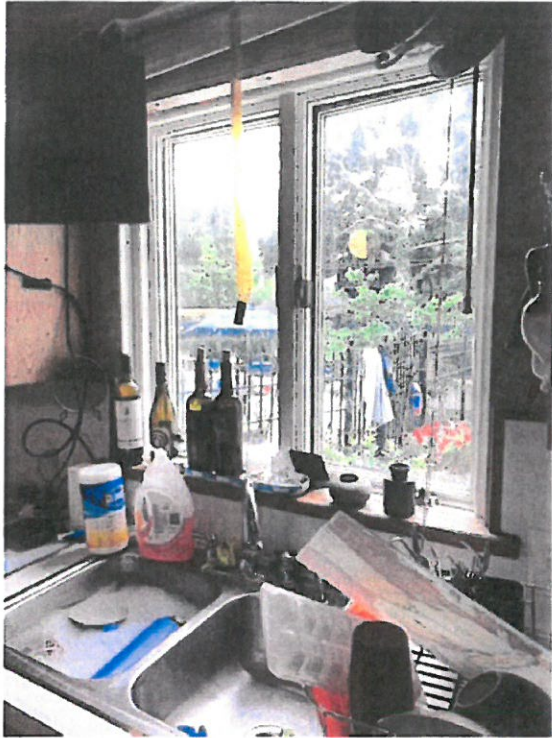
1. Provide photos of all sides of house with Labels for all photos to be replaced – labels should correspond with all interior photo details (front 1, front 2. Etc for all sides) so staff / commission can easily understand what is existing and what is proposed
2. Submit Cost estimate for repair and detailed written analysis of deterioration (for all windows) from window repair contractor. Photos to substantiate deterioration  
2 – See attachment #2 is the estimate the home owner received for repairs and or companies not willing to repair windows
3. Detailed analysis of existing window dimensions, including sash, mullions, trim, glass and profile  
3 – See attachment # 3 for existing window dimensions existing windows are a double hung windows with single pane glass with an exterior storm window.  
The simulated divided light bars are  $\frac{3}{4}$  in width on the existing windows  
The replacement windows will be double hung windows with the same dimensions and the same  $\frac{3}{4}$  width simulated divided light bars and a dual pane glass. The profile will match the existing.  
Provide same dimensions for proposed fiberglass replacements
4. Estimate for in-kind replacement window replacement- wood windows should be of similar dimensions to existing windows – provide dimensions to compare with existing windows and proposed fiberglass replacements  
4 – See attachment 4 The replacement windows are a fiberglass product with a white exterior to match the current windows. The window dimensions are listed on an attachment and are the same size as the current windows that are being proposed to be removed.

*Refer back to ATTACHMENT #3*

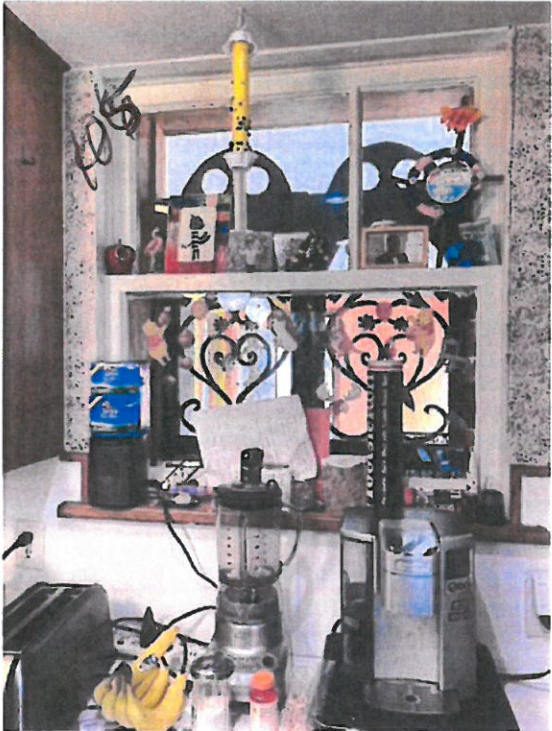
Please note that your application is incomplete until all required information is submitted and cannot be acted upon further. Incomplete applications cannot be heard before the Historic District Commission.







108  
107



106

# Job Photos

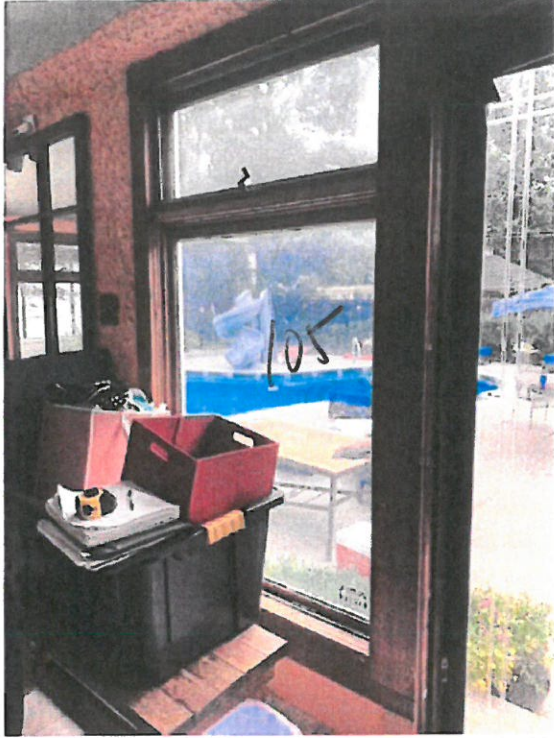


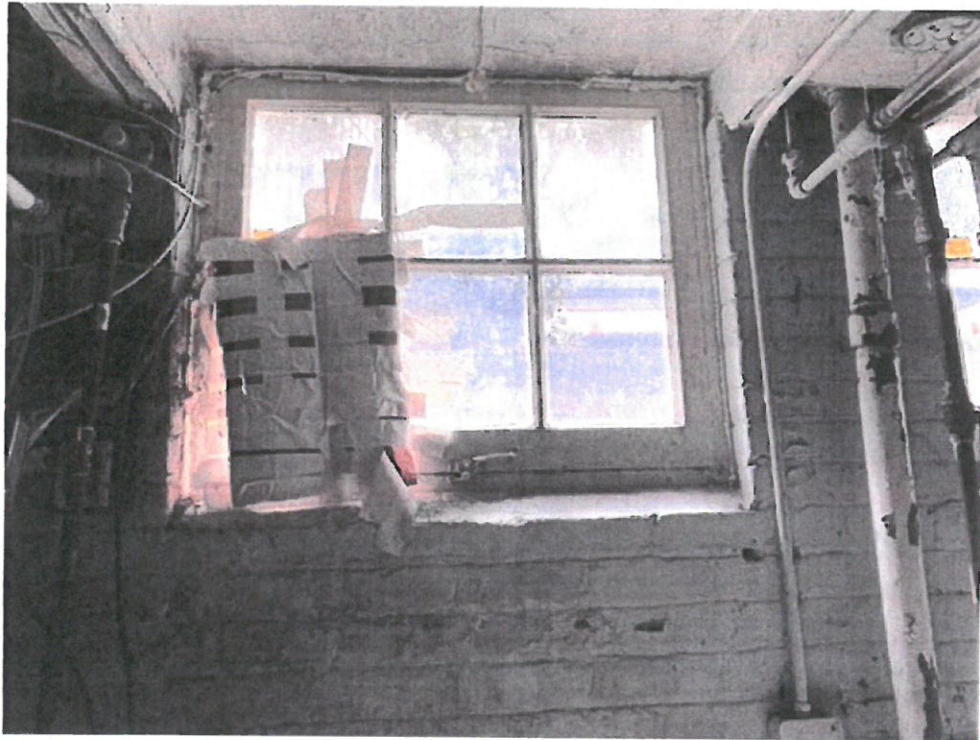
109  
STAIN  
CASE



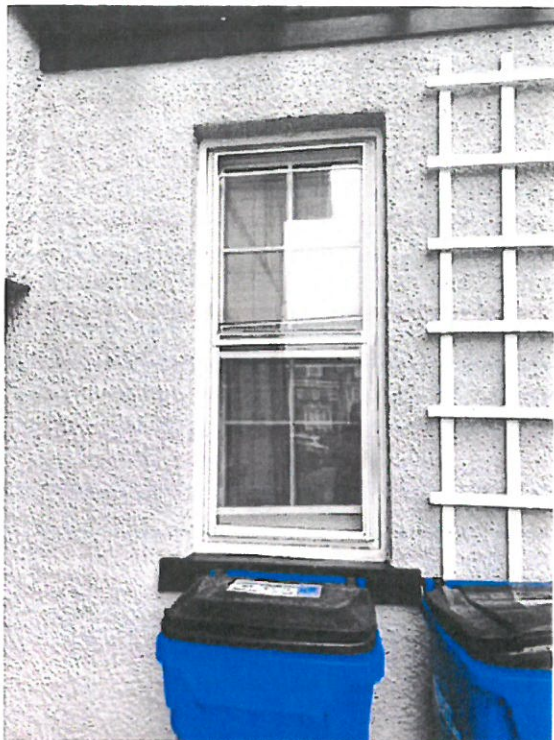
109 TRIM  
LIKE  
/ LIKE





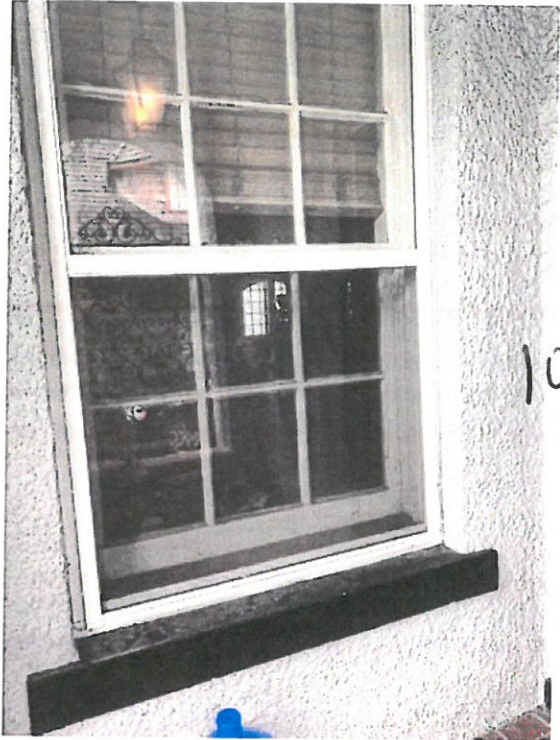






110





109



111











017

018

019



















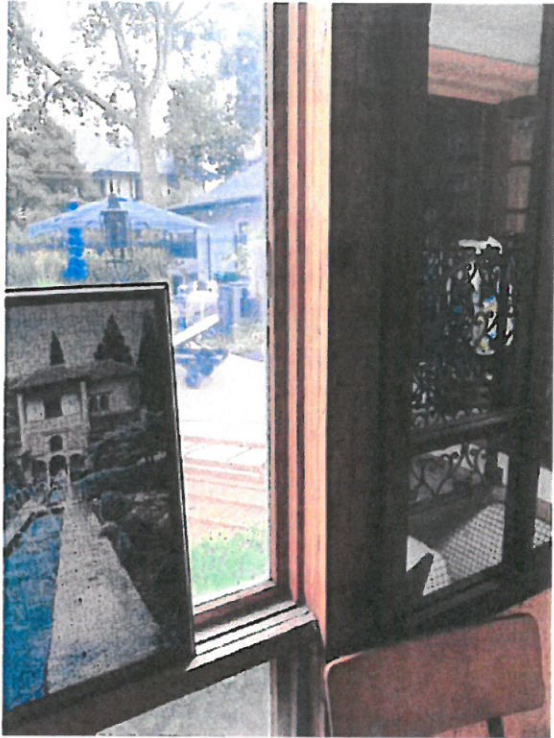












INSIDE  
101-105



## UNIT SUMMARY

The following is a schedule of the windows and doors for this project. For additional unit details, please see Line Item Quotes.

Additional charges, tax or Terms and Conditions may apply. Detail pricing is per unit.

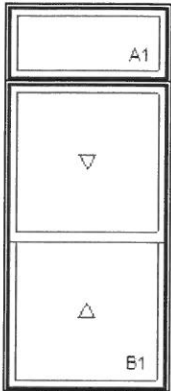
LINE	MARK UNIT	PRODUCT LINE	ITEM	QTY
1	101 Side Sunroom	Infinity	Infinity Assembly	1
2	102 Rear Sunroom	Infinity	Infinity Assembly	1
3	103 Rear Sunroom	Infinity	Infinity Assembly	1
4	104 Rear Sunroom	Infinity	Infinity Assembly	1
5	105 Rear Sunroom	Infinity	Double Hung	1
6	106 side Kitchen between wal	Infinity	Double Hung	1
7	107 Rear Kitchen above sink	Infinity	Awning	1
8	108 Rear Stair case	Infinity	Double Hung	1
9	109 Rear side pantry	Infinity	Double Hung	1
10	110 Side side Pantry	Infinity	Double Hung	1
11	111 Side Bath	Infinity	Double Hung	1
12	112 Side Foyer	Infinity	Double Hung	1
13	113 Side Closet	Infinity	Double Hung	1
14	114 Side Living Room	Infinity	Double Hung	1
15	215 Upper Sons Room	Infinity	Double Hung	1
16	216 Front Sons room	Infinity	Double Hung	1
17	017 basement laundry	Infinity	Casement Picture	1
18	018 basement laundry	Infinity	Casement Picture	1
19	019 basement laundrv	Infinity	Casement Picture	1

## LINE ITEM QUOTES

The following is a schedule of the windows and doors for this project. For additional unit details, please see Line Item Quotes. Additional charges, tax or Terms and Conditions may apply. Detail pricing is per unit.

Line #1	Mark Unit: 101 Side Sunroom			
Qty: 1				

**INFINITY**  
from MARVIN  
 REPLACEMENT WINDOWS



As Viewed From The Exterior

**Egress Information A1**  
 No Egress Information available.  
**Egress Information B1**  
 Width: 36 7/64" Height: 30 13/64"  
 Net Clear Opening: 7.57 SqFt

Stone White Exterior  
 Stone White Interior  
 1W2H - Rectangle Assembly  
 Assembly Frame Size  
 39" X 90"  
 Assembly Rough Opening  
 40" X 90 1/2"

Unit: A1  
 Infinity Double Hung Picture  
 Basic Frame 39" X 18"  
 Rough Opening 40" X 18 1/2"  
 IG - 1 Lite  
 Low E3 w/Argon  
 Stainless Perimeter Bar

Unit: B1  
 Infinity Double Hung  
 Basic Frame 39" X 72"  
 Rough Opening 40" X 72 1/2"  
 Top Sash  
 IG - 1 Lite  
 Low E2 w/Argon  
 Stainless Perimeter Bar  
 Bottom Sash  
 IG - 1 Lite  
 Tempered Low E3 w/Argon  
 Stainless Perimeter Bar  
 White Weather Strip Package  
 White Sash Lock  
 White Sash Lift  
 Extruded Full Screen  
 Stone White Surround  
 Charcoal Hi-Transparency Fbrgl's Mesh  
 2 7/8" Jamb's  
 Nailing Fin  
 \*\*\*Note: Unit Availability and Price is Subject to Change

Line #2	Mark Unit: 102 Rear Sunroom			
Qty: 1				

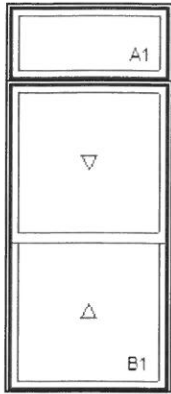
**INFINITY**  
from MARVIN  
 REPLACEMENT WINDOWS

Stone White Exterior  
 Stone White Interior  
 1W2H - Rectangle Assembly  
 Assembly Frame Size  
 39" X 90"  
 Assembly Rough Opening  
 40" X 90 1/2"

Unit: A1  
 Infinity Double Hung Picture  
 Basic Frame 39" X 18"  
 Rough Opening 40" X 18 1/2"  
 IG - 1 Lite  
 Low E3 w/Argon  
 Stainless Perimeter Bar

Unit: B1  
 Infinity Double Hung



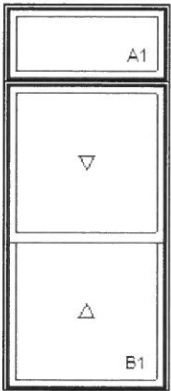


As Viewed From The Exterior

**Egress Information A1**  
 No Egress Information available.  
**Egress Information B1**  
 Width: 36 7/64" Height: 30 13/64"  
 Net Clear Opening: 7.57 SqFt

Basic Frame 39" X 72"  
 Rough Opening 40" X 72 1/2"  
 Top Sash  
 IG - 1 Lite  
 Low E2 w/Argon  
 Stainless Perimeter Bar  
 Bottom Sash  
 IG - 1 Lite  
 Tempered Low E3 w/Argon  
 Stainless Perimeter Bar  
 White Weather Strip Package  
 White Sash Lock  
 White Sash Lift  
 Extruded Full Screen  
 Stone White Surround  
 Charcoal Hi-Transparency Fbrgls Mesh  
 2 7/8" Jambs  
 Nailing Fin  
 \*\*\*Note: Unit Availability and Price is Subject to Change

Line #3	Mark Unit: 103 Rear Sunroom			
Qty: 1				



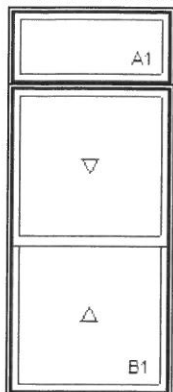
As Viewed From The Exterior

**Egress Information A1**  
 No Egress Information available.  
**Egress Information B1**  
 Width: 36 7/64" Height: 30 13/64"  
 Net Clear Opening: 7.57 SqFt

Stone White Exterior  
 Stone White Interior  
 1W2H - Rectangle Assembly  
 Assembly Frame Size  
 39" X 90"  
 Assembly Rough Opening  
 40" X 90 1/2"  
 Unit: A1  
 Infinity Double Hung Picture  
 Basic Frame 39" X 18"  
 Rough Opening 40" X 18 1/2"  
 IG - 1 Lite  
 Low E3 w/Argon  
 Stainless Perimeter Bar  
 Unit: B1  
 Infinity Double Hung  
 Basic Frame 39" X 72"  
 Rough Opening 40" X 72 1/2"  
 Top Sash  
 IG - 1 Lite  
 Low E3 w/Argon  
 Stainless Perimeter Bar  
 Bottom Sash  
 IG - 1 Lite  
 Tempered Low E3 w/Argon  
 Stainless Perimeter Bar  
 White Weather Strip Package  
 White Sash Lock  
 White Sash Lift  
 Extruded Full Screen  
 Stone White Surround  
 Charcoal Hi-Transparency Fbrgls Mesh  
 2 7/8" Jambs  
 Nailing Fin  
 \*\*\*Note: Unit Availability and Price is Subject to Change

Line #4	Mark Unit: 104 Rear Sunroom			
Qty: 1				

**INFINITY**  
 from **MARVIN**  
 REPLACEMENT WINDOWS



As Viewed From The Exterior

**Egress Information A1**

No Egress Information available.

**Egress Information B1**

Width: 36 7/64" Height: 30 13/64"

Net Clear Opening: 7.57 SqFt

Stone White Exterior  
 Stone White Interior  
 1W2H - Rectangle Assembly  
 Assembly Frame Size  
 39" X 90"  
 Assembly Rough Opening  
 40" X 90 1/2"

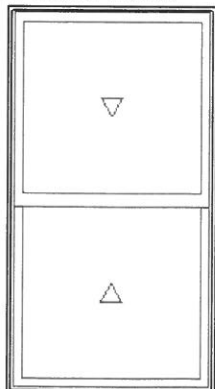
Unit: A1  
 Infinity Double Hung Picture  
 Basic Frame 39" X 18"  
 Rough Opening 40" X 18 1/2"  
 IG - 1 Lite  
 Low E3 w/Argon  
 Stainless Perimeter Bar

Unit: B1  
 Infinity Double Hung  
 Basic Frame 39" X 72"  
 Rough Opening 40" X 72 1/2"  
 Top Sash  
 IG - 1 Lite  
 Low E3 w/Argon  
 Stainless Perimeter Bar  
 Bottom Sash  
 IG - 1 Lite  
 Tempered Low E3 w/Argon  
 Stainless Perimeter Bar  
 White Weather Strip Package  
 White Sash Lock  
 White Sash Lift  
 Extruded Full Screen  
 Stone White Surround  
 Charcoal Hi-Transparency Fbgrls Mesh  
 2 7/8" Jamb  
 Nailing Fin

\*\*\*Note: Unit Availability and Price is Subject to Change

Line #5	Mark Unit: 105 Rear Sunroom			
Qty: 1				

**INFINITY**  
 from **MARVIN**  
 REPLACEMENT WINDOWS



As Viewed From The Exterior

**Egress Information**

Width: 36 7/64" Height: 29 45/64"

Net Clear Opening: 7.45 SqFt

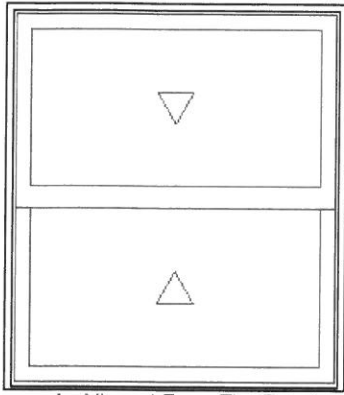
Stone White Exterior  
 Stone White Interior  
 Infinity Double Hung  
 Frame Size 39" X 71"  
 Rough Opening 40" X 71 1/2"  
 Top Sash  
 IG - 1 Lite  
 Low E3 w/Argon  
 Stainless Perimeter Bar  
 Bottom Sash  
 IG - 1 Lite  
 Low E3 w/Argon  
 Stainless Perimeter Bar  
 White Weather Strip Package  
 White Sash Lock  
 White Sash Lift  
 Extruded Full Screen  
 Stone White Surround  
 Charcoal Fiberglass Mesh  
 2 7/8" Jamb  
 Nailing Fin

\*\*\*Note: Unit Availability and Price is Subject to Change

Line #6	Mark Unit: 106 side Kitchen between wal			
Qty: 1				



**INFINITY**  
 from **MARVIN**  
 REPLACEMENT WINDOWS



As Viewed From The Exterior

**Egress Information**

Width: 34 7/64" Height: 14 45/64"  
 Net Clear Opening: 3.48 SqFt

- Stone White Exterior
- Stone White Interior
- Infinity Double Hung
- Frame Size 37" X 41"
- Rough Opening 38" X 41 1/2"
- Top Sash
  - IG - 1 Lite
  - Low E2 w/Argon
  - Stainless Perimeter Bar
- Bottom Sash
  - IG - 1 Lite
  - Low E2 w/Argon
  - Stainless Perimeter Bar
- White Weather Strip Package
- White Sash Lock
- White Sash Lift
- Extruded Full Screen
- Stone White Surround
- Charcoal Fiberglass Mesh

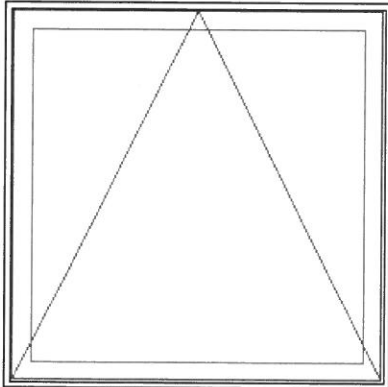
2 7/8" Jamb

Nailing Fin

\*\*\*Note: Unit Availability and Price is Subject to Change

Line #7	Mark Unit: 107 Rear Kitchen above sink			
Qty: 1				

**INFINITY**  
 from **MARVIN**  
 REPLACEMENT WINDOWS



As Viewed From The Exterior

**Egress Information**

No Egress Information available.

- Stone White Exterior
- Stone White Interior
- Infinity Awning - Roto Operating
- Frame Size 38" X 38"
- Rough Opening 39" X 38 1/2"
- IG - 1 Lite
- Low E3 w/Argon
- Stainless Perimeter Bar
- Beige Weather Strip
- White Folding Handle
- Interior Extruded Screen
- Stone White Surround
- Charcoal Fiberglass Mesh

2 1/4" Jamb

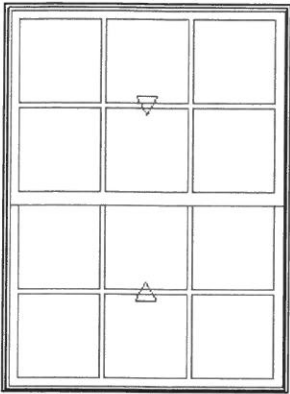
Nailing Fin

\*\*\*Note: Unit Availability and Price is Subject to Change

Line #8	Mark Unit: 108 Rear Stair case			
Qty: 1				

**INFINITY**  
 from **MARVIN**  
 REPLACEMENT WINDOWS

- Stone White Exterior
- Stone White Interior
- Infinity Double Hung
- Frame Size 53" X 70"
- Rough Opening 54" X 70 1/2"
- Top Sash
  - IG
  - Tempered Low E2 w/Argon
  - Stainless Perimeter and Spacer Bar
- 7/8" SDL - With Spacer Bar
- Rectangular 3W2H
- Stone White Ext - Stone White Int



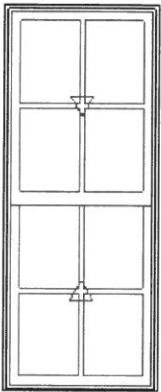
As Viewed From The Exterior

**Egress Information**

Width: 50 7/64" Height: 29 13/64"  
 Net Clear Opening: 10.16 SqFt

- Bottom Sash
- IG
- Tempered Low E2 w/Argon
- Stainless Perimeter and Spacer Bar
- 7/8" SDL - With Spacer Bar
- Rectangular 3W2H
- Stone White Ext - Stone White Int
- White Weather Strip Package
- 2 White Sash Lock
- 2 White Sash Lift
- Extruded Full Screen
- Stone White Surround
- Charcoal Fiberglass Mesh
- 2 7/8" Jamb
- Nailing Fin
- \*\*\*Note: Frame Size width exceeds 48". Unit may have limited travel and may not meet egress requirements.
- \*\*\*Note: Divided lite cut alignment may not be accurately represented in the OMS drawing. Please consult your local representative for exact specifications.
- \*\*\*Note: Unit Availability and Price is Subject to Change

Line #9	Mark Unit: 109 Rear side pantry			
Qty: 1				



As Viewed From The Exterior

**Egress Information**

Width: 24 7/64" Height: 27 13/64"  
 Net Clear Opening: 4.55 SqFt

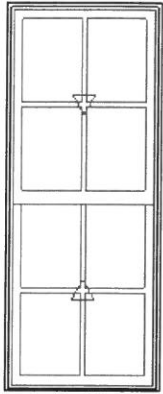
- Stone White Exterior
- Stone White Interior
- Infinity Double Hung
- Frame Size 27" X 66"
- Rough Opening 28" X 66 1/2"
- Top Sash
- IG
- Low E2 w/Argon
- Stainless Perimeter and Spacer Bar
- 7/8" SDL - With Spacer Bar
- Rectangular 2W2H
- Stone White Ext - Stone White Int
- Bottom Sash
- IG
- Low E2 w/Argon
- Stainless Perimeter and Spacer Bar
- 7/8" SDL - With Spacer Bar
- Rectangular 2W2H
- Stone White Ext - Stone White Int
- White Weather Strip Package
- White Sash Lock
- White Sash Lift
- Extruded Full Screen
- Stone White Surround
- Charcoal Fiberglass Mesh
- 2 7/8" Jamb
- Nailing Fin
- \*\*\*Note: Divided lite cut alignment may not be accurately represented in the OMS drawing. Please consult your local representative for exact specifications.
- \*\*\*Note: Unit Availability and Price is Subject to Change

Line #10	Mark Unit: 110 Side side Pantry			
Qty: 1				



- Stone White Exterior
- Stone White Interior
- Infinity Double Hung
- Frame Size 27" X 66"
- Rough Opening 28" X 66 1/2"
- Top Sash
- IG
- Low E2 w/Argon
- Stainless Perimeter and Spacer Bar





As Viewed From The Exterior

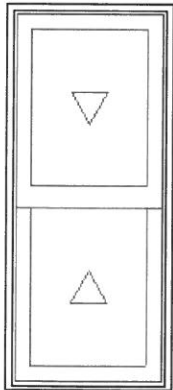
**Egress Information**

Width: 24 7/64" Height: 27 13/64"  
 Net Clear Opening: 4.55 SqFt

- 7/8" SDL - With Spacer Bar
- Rectangular 2W2H
- Stone White Ext - Stone White Int
- Bottom Sash
- IG
- Low E2 w/Argon
- Stainless Perimeter and Spacer Bar
- 7/8" SDL - With Spacer Bar
- Rectangular 2W2H
- Stone White Ext - Stone White Int
- White Weather Strip Package
- White Sash Lock
- White Sash Lift
- Extruded Full Screen
- Stone White Surround
- Charcoal Fiberglass Mesh
- 2 7/8" Jamb
- Nailing Fin

\*\*\*Note: Divided lite cut alignment may not be accurately represented in the OMS drawing. Please consult your local representative for exact specifications.  
 \*\*\*Note: Unit Availability and Price is Subject to Change

Line #11	Mark Unit: 111 Side Bath			
Qty: 1				



As Viewed From The Exterior

**Egress Information**

Width: 15 7/64" Height: 14 45/64"  
 Net Clear Opening: 1.54 SqFt

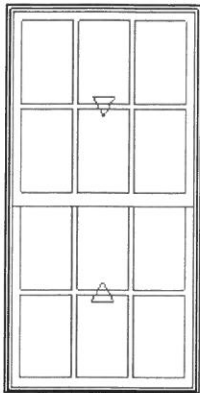
- Stone White Exterior
- Stone White Interior
- Infinity Double Hung
- Frame Size 18" X 41"
- Rough Opening 19" X 41 1/2"
- Top Sash
- IG - 1 Lite
- Low E2 w/Argon
- Stainless Perimeter Bar
- Bottom Sash
- IG - 1 Lite
- Low E2 w/Argon
- Stainless Perimeter Bar
- White Weather Strip Package
- White Sash Lock
- White Sash Lift
- Extruded Full Screen
- Stone White Surround
- Charcoal Fiberglass Mesh
- 2 7/8" Jamb
- Nailing Fin

\*\*\*Note: Unit Availability and Price is Subject to Change

Line #12	Mark Unit: 112 Side Foyer			
Qty: 1				



- Stone White Exterior
- Stone White Interior
- Infinity Double Hung
- Frame Size 34" X 66"
- Rough Opening 35" X 66 1/2"
- Top Sash
- IG
- Low E2 w/Argon
- Stainless Perimeter and Spacer Bar
- 7/8" SDL - With Spacer Bar
- Rectangular 3W2H
- Stone White Ext - Stone White Int
- Bottom Sash
- IG
- Low E2 w/Argon



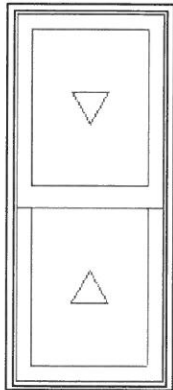
As Viewed From The Exterior

- Stainless Perimeter and Spacer Bar
- 7/8" SDL - With Spacer Bar
- Rectangular 3W2H
- Stone White Ext - Stone White Int
- White Weather Strip Package
- White Sash Lock
- White Sash Lift
- Extruded Full Screen
- Stone White Surround
- Charcoal Fiberglass Mesh
- 2 7/8" Jamb
- Nailing Fin
- \*\*\*Note: Divided lite cut alignment may not be accurately represented in the OMS drawing. Please consult your local representative for exact specifications.
- \*\*\*Note: Unit Availability and Price is Subject to Change

**Egress Information**

Width: 31 7/64" Height: 27 13/64"  
 Net Clear Opening: 5.88 SqFt

Line #13	Mark Unit: 113 Side Closet			
Qty: 1				



As Viewed From The Exterior

- Stone White Exterior
- Stone White Interior
- Infinity Double Hung
- Frame Size 18" X 41"
- Rough Opening 19" X 41 1/2"
- Top Sash
  - IG - 1 Lite
  - Low E2 w/Argon
  - Stainless Perimeter Bar
- Bottom Sash
  - IG - 1 Lite
  - Low E2 w/Argon
  - Stainless Perimeter Bar
- White Weather Strip Package
- White Sash Lock
- White Sash Lift
- Extruded Full Screen
- Stone White Surround
- Charcoal Fiberglass Mesh
- 2 7/8" Jamb
- Nailing Fin
- \*\*\*Note: Unit Availability and Price is Subject to Change

**Egress Information**

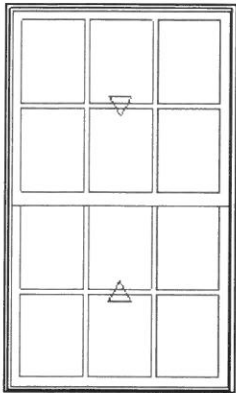
Width: 15 7/64" Height: 14 45/64"  
 Net Clear Opening: 1.54 SqFt

Line #14	Mark Unit: 114 Side Living Room			
Qty: 1				



- Stone White Exterior
- Stone White Interior
- Infinity Double Hung
- Frame Size 40" X 66"
- Rough Opening 41" X 66 1/2"
- Top Sash
  - IG
  - Low E2 w/Argon
  - Stainless Perimeter and Spacer Bar
  - 7/8" SDL - With Spacer Bar
  - Rectangular 3W2H
  - Stone White Ext - Stone White Int
- Bottom Sash
  - IG
  - Low E2 w/Argon





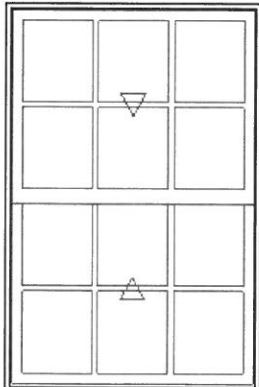
As Viewed From The Exterior

- Stainless Perimeter and Spacer Bar
- 7/8" SDL - With Spacer Bar
- Rectangular 3W2H
- Stone White Ext - Stone White Int
- White Weather Strip Package
- White Sash Lock
- White Sash Lift
- Extruded Full Screen
- Stone White Surround
- Charcoal Fiberglass Mesh
- 2 7/8" Jamb
- Nailing Fin
- \*\*\*Note: Divided lite cut alignment may not be accurately represented in the OMS drawing. Please consult your local representative for exact specifications.
- \*\*\*Note: Unit Availability and Price is Subject to Change

**Egress Information**

Width: 37 7/64" Height: 27 13/64"  
 Net Clear Opening: 7.01 SqFt

Line #15	Mark Unit: 215 Upper Sons Room			
Qty: 1				



As Viewed From The Exterior

**Egress Information**

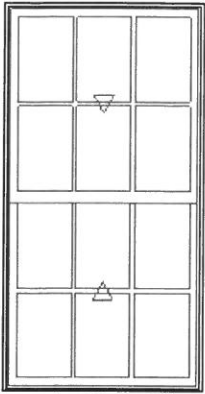
Width: 38 7/64" Height: 24 45/64"  
 Net Clear Opening: 6.54 SqFt  
 Sash Limiters and Window Opening Control Devices, when engaged, may reduce the egress opening dimensions of windows.

- Stone White Exterior
- Stone White Interior
- Infinity Double Hung
- Frame Size 41" X 61"
- Rough Opening 42" X 61 1/2"
- Top Sash
- IG
- Low E2 w/Argon
- Stainless Perimeter and Spacer Bar
- 7/8" SDL - With Spacer Bar
- Rectangular 3W2H
- Stone White Ext - Stone White Int
- Bottom Sash
- IG
- Low E2 w/Argon
- Stainless Perimeter and Spacer Bar
- 7/8" SDL - With Spacer Bar
- Rectangular 3W2H
- Stone White Ext - Stone White Int
- White Weather Strip Package
- White Sash Lock
- White Sash Lift
- White Window Opening Control Device
- Extruded Full Screen
- Stone White Surround
- Charcoal Fiberglass Mesh
- 2 7/8" Jamb
- Nailing Fin
- \*\*\*Note: Divided lite cut alignment may not be accurately represented in the OMS drawing. Please consult your local representative for exact specifications.
- \*\*\*Note: Unit Availability and Price is Subject to Change

Line #16	Mark Unit: 216 Front Sons room			
Qty: 1				



- Stone White Exterior
- Stone White Interior
- Infinity Double Hung
- Frame Size 40" X 76"
- Rough Opening 41" X 76 1/2"
- Top Sash
- IG
- Low E2 w/Argon



As Viewed From The Exterior

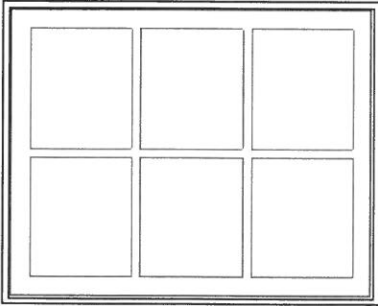
**Egress Information**

Width: 37 7/64" Height: 32 13/64"  
 Net Clear Opening: 8.30 SqFt

Stainless Perimeter and Spacer Bar  
 7/8" SDL - With Spacer Bar  
 Rectangular 3W2H  
 Stone White Ext - Stone White Int  
 Bottom Sash  
 IG  
 Tempered Low E2 w/Argon  
 Stainless Perimeter and Spacer Bar  
 7/8" SDL - With Spacer Bar  
 Rectangular 3W2H  
 Stone White Ext - Stone White Int  
 White Weather Strip Package  
 White Sash Lock  
 White Sash Lift  
 Extruded Full Screen  
 Stone White Surround  
 Charcoal Fiberglass Mesh  
 2 7/8" Jamb  
 Nailing Fin  
 \*\*\*Note: Divided lite cut alignment may not be accurately represented in the OMS drawing. Please consult your local representative for exact specifications.  
 \*\*\*Note: Unit Availability and Price is Subject to Change

Line #17	Mark Unit: 017 basement laundry			
Qty: 1				

**INFINITY**  
 from **MARVIN**  
 REPLACEMENT WINDOWS



As Viewed From The Exterior

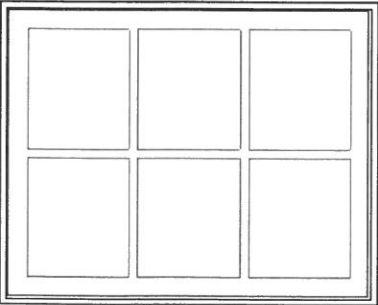
**Egress Information**

No Egress Information available.

Stone White Exterior  
 Stone White Interior  
 Infinity Casement Picture  
 Frame Size 36" X 29"  
 Rough Opening 37" X 29 1/2"  
 IG  
 Low E2 w/Argon  
 Stainless Perimeter and Spacer Bar  
 7/8" SDL - With Spacer Bar  
 Rectangular 3W2H  
 Stone White Ext - Stone White Int  
 Beige Weather Strip  
 2 1/4" Jamb  
 Nailing Fin  
 \*\*\*Note: Divided lite cut alignment may not be accurately represented in the OMS drawing. Please consult your local representative for exact specifications.  
 \*\*\*Note: Unit Availability and Price is Subject to Change

Line #18	Mark Unit: 018 basement laundry			
Qty: 1				

**INFINITY**  
 from **MARVIN**  
 REPLACEMENT WINDOWS



As Viewed From The Exterior

**Egress Information**

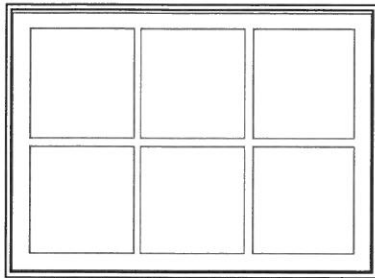
Stone White Exterior  
 Stone White Interior  
 Infinity Casement Picture  
 Frame Size 36" X 29"  
 Rough Opening 37" X 29 1/2"  
 IG  
 Low E2 w/Argon  
 Stainless Perimeter and Spacer Bar  
 7/8" SDL - With Spacer Bar  
 Rectangular 3W2H  
 Stone White Ext - Stone White Int  
 Beige Weather Strip  
 2 1/4" Jamb  
 Nailing Fin  
 \*\*\*Note: Divided lite cut alignment may not be accurately represented in the OMS drawing. Please consult your local representative for exact specifications.  
 \*\*\*Note: Unit Availability and Price is Subject to Change



No Egress Information available.

Line #19	Mark Unit: 019 basement laundry			
Qty: 1				

**INFINITY**  
from MARVIN  
 REPLACEMENT WINDOWS



As Viewed From The Exterior

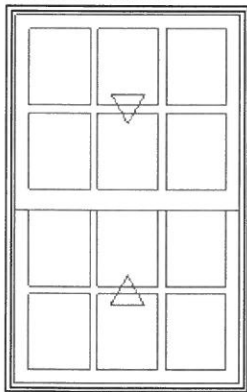
**Egress Information**

No Egress Information available.

Stone White Exterior  
 Stone White Interior  
 Infinity Casement Picture  
 Frame Size 41" X 30"  
 Rough Opening 42" X 30 1/2"  
 IG  
 Low E2 w/Argon  
 Stainless Perimeter and Spacer Bar  
 7/8" SDL - With Spacer Bar  
 Rectangular 3W2H  
 Stone White Ext - Stone White Int  
 Beige Weather Strip  
 2 1/4" Jamb  
 Nailing Fin  
 \*\*\*Note: Divided lite cut alignment may not be accurately represented in the OMS drawing. Please consult your local representative for exact specifications.  
 \*\*\*Note: Unit Availability and Price is Subject to Change

Line #20	Mark Unit: 320 Atti 2426 Longfellow Det			
Qty: 1				

**INFINITY**  
from MARVIN  
 REPLACEMENT WINDOWS



As Viewed From The Exterior

**Egress Information**

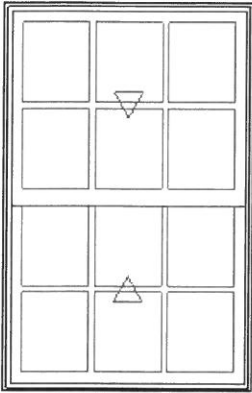
Width: 25 15/16" Height: 16 21/32"  
 Net Clear Opening: 3.00 SqFt

Stone White Exterior  
 Stone White Interior  
 Infinity Insert Double Hung  
 Inside Opening 29" X 45"  
 Top Sash  
 IG  
 Low E2 w/Argon  
 Stainless Perimeter and Spacer Bar  
 7/8" SDL - With Spacer Bar  
 Rectangular 3W2H  
 Stone White Ext - Stone White Int  
 Bottom Sash  
 IG  
 Low E2 w/Argon  
 Stainless Perimeter and Spacer Bar  
 7/8" SDL - With Spacer Bar  
 Rectangular 3W2H  
 Stone White Ext - Stone White Int  
 White Weather Strip Package  
 White Sash Lock  
 White Sash Lift  
 Extruded Full Screen  
 Stone White Surround  
 Charcoal Fiberglass Mesh  
 Existing Sill Angle 0  
 Is the existing Sill Angle of 0 degrees correct?  
 3 1/4" Jamb  
 \*\*\*Note: Divided lite cut alignment may not be accurately represented in the OMS drawing. Please consult your local representative for exact specifications.  
 \*\*\*Note: Unit Availability and Price is Subject to Change

Line #21	Mark Unit: 321 Att 2426 Longfellow Det			
Qty: 1				

**INFINITY**  
from MARVIN  
 REPLACEMENT WINDOWS

Stone White Exterior  
 Stone White Interior  
 Infinity Insert Double Hung  
 Inside Opening 35" X 53"



As Viewed From The Exterior

**Egress Information**

Width: 31 15/16" Height: 20 21/32"  
Net Clear Opening: 4.58 SqFt

- Top Sash
  - IG
  - Low E2 w/Argon
  - Stainless Perimeter and Spacer Bar
  - 7/8" SDL - With Spacer Bar
  - Rectangular 3W2H
  - Stone White Ext - Stone White Int
- Bottom Sash
  - IG
  - Low E2 w/Argon
  - Stainless Perimeter and Spacer Bar
  - 7/8" SDL - With Spacer Bar
  - Rectangular 3W2H
  - Stone White Ext - Stone White Int
  - White Weather Strip Package
  - White Sash Lock
  - White Sash Lift
  - Extruded Full Screen
  - Stone White Surround
  - Charcoal Fiberglass Mesh

Existing Sill Angle 0

Is the existing Sill Angle of 0 degrees correct?

3 1/4" Jambs

\*\*\*Note: Divided lite cut alignment may not be accurately represented in the OMS drawing. Please consult your local representative for exact specifications.

\*\*\*Note: Unit Availability and Price is Subject to Change