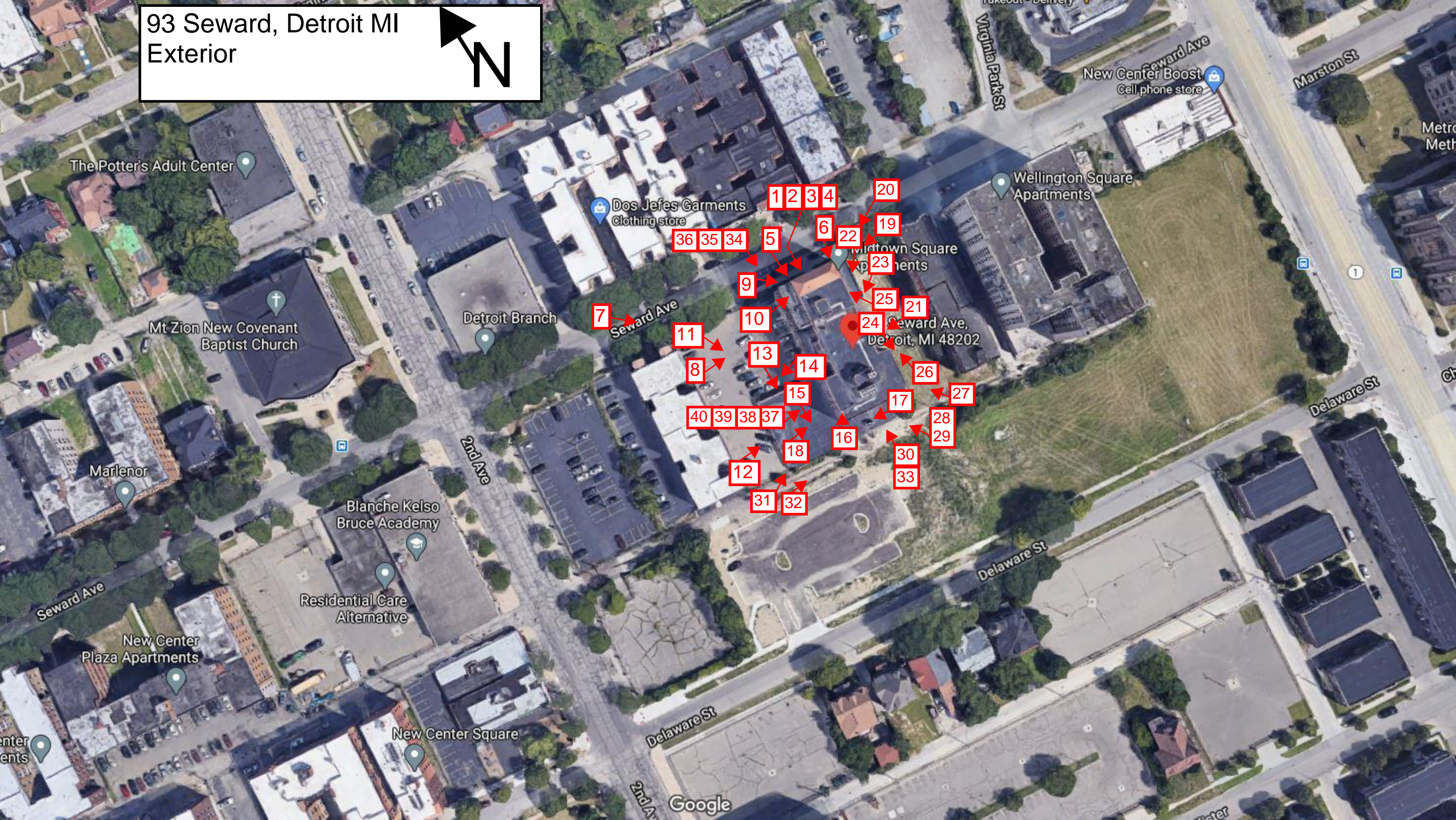
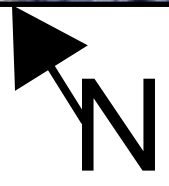
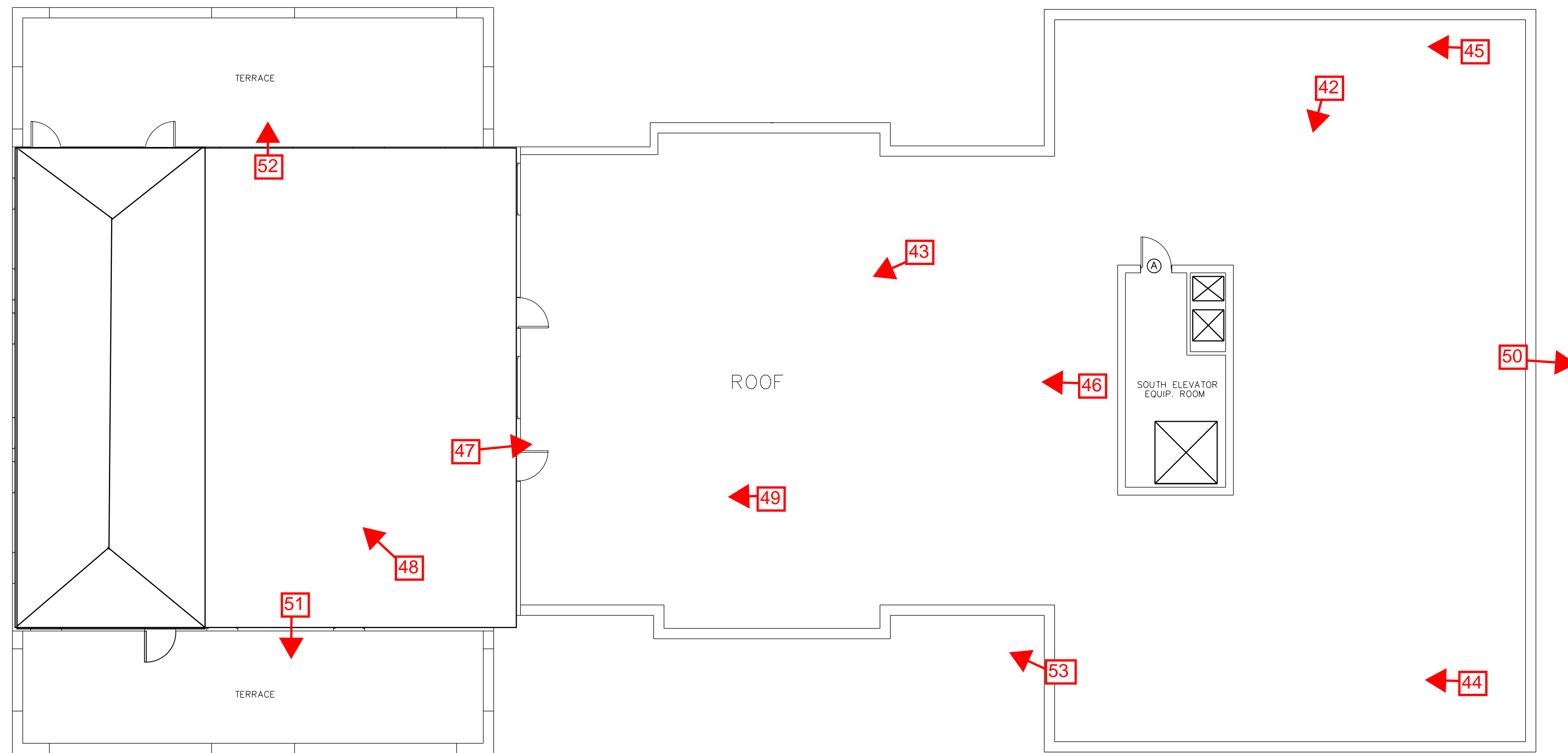
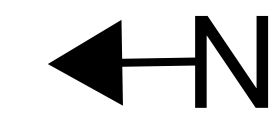


93 Seward, Detroit MI Exterior





DOOR TYPE DESCRIPTIONS

- A-DWELLING UNIT ENTRY 22 GA STEEL, RAISED STILE FACTORY FINISHED.
- B-DWELLING UNIT INTERIOR SOLID CORE WOOD
- C-DWELLING UNIT INTERIOR HOLLOW CORE WOOD
- D-EXIT STAIRS, COMMON AREAS 18 GA. HOLLOW METAL WITH SAFETY GLAZING.
- E-RESTRICTED ACCESS 18 GA. HOLLOW METAL, FLUSH.
- F-STOREFRONT/ENTRY 18 GA. HOLLOW METAL WITH SAFETY GLAZING.

FLOOR PLAN SYMBOLS KEY

- EXISTING WALL TO REMAIN
- KEY NOTE
- NEW DOOR
- EXISTING DOOR

INTERIOR ROOF FLOOR PLAN
SCALE: 1/8" = 1'-0"

ISSUE DATES:

KEY PLAN
JUNE/19/2002
50% REVIEW
JULY/02/2002
75% REVIEW
AUG/06/2002
BIDS
NOV/22/2002