



Mildred Cross
3790 Sturtevant
Detroit MI 48202
Russell Woods District

Renewal by Andersen 37720 Amrhein Livonia, MI 48150

- Customer wants to replace the windows in two openings that currently have wood window units with Renewal by Andersen Fibrex window units.
- Renewal by Andersen windows are Fibrex (wood composite) material
- Windows are located in the front of the house and front right (right when looking at front of home from the road).
- Windows will be red rock and exterior trim will be replaced with something similar (this isn't traditional brickmould)



Renewal by Andersen 37720 Amrhein Livonia, MI 48150

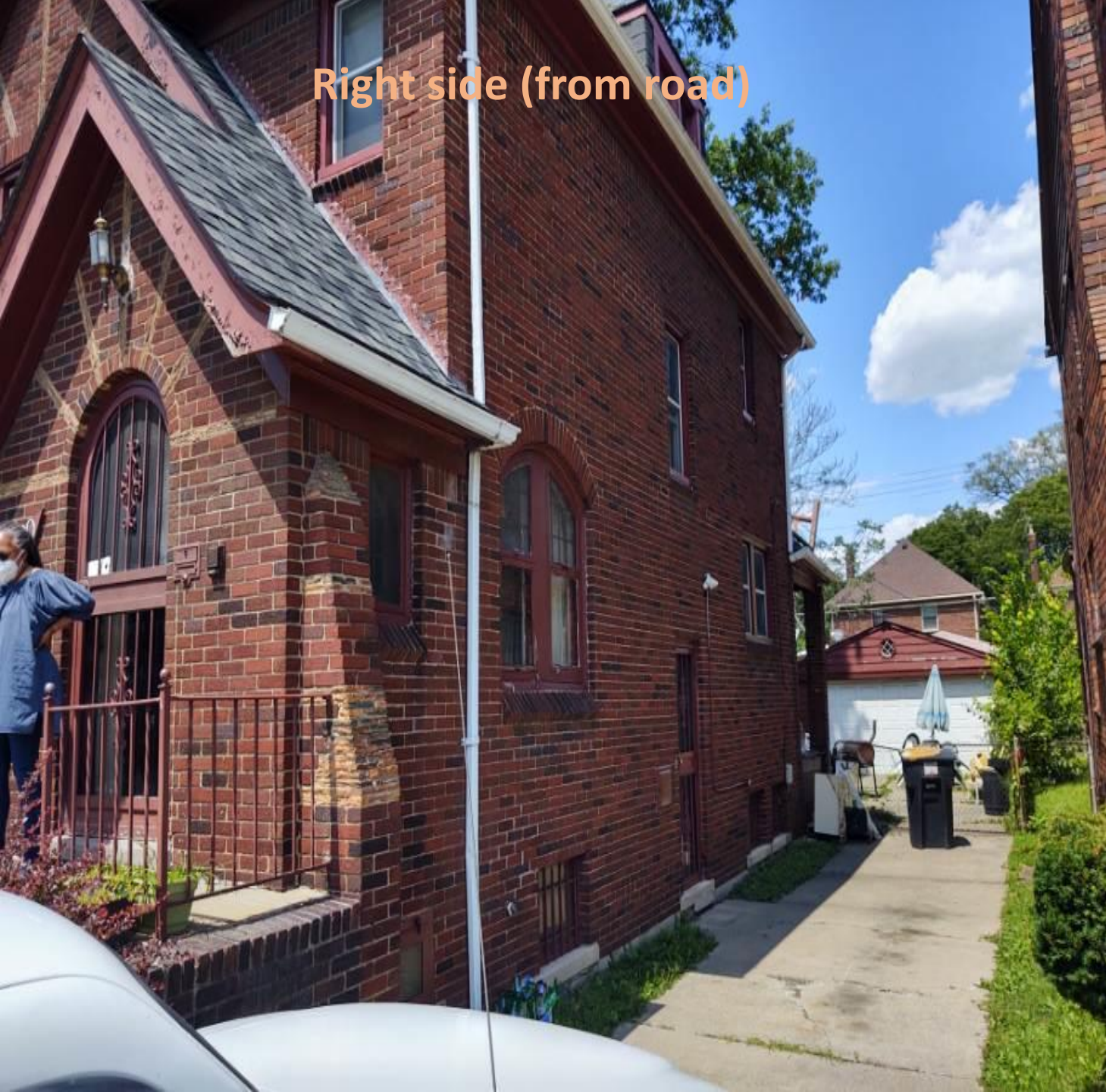
- Customer wants to replace the windows in two openings that currently have wood window units with Renewal by Andersen Fibrex window units.
- Renewal by Andersen windows are Fibrex (wood composite) material
- Windows are located in the front of the house and front right (right when looking at front of home from the road).
- Windows will be red rock and exterior trim will be replaced with something similar (this isn't traditional brickmould)



Front of house



Right side (from road)



Left side (from road)



WINDOW OPENING 1

Living Room

Existing:

- **Double Hung**
- **Window is in Livingroom**
- **Exterior shows signs of deterioration and exterior has not been maintained**
- **Outside glass “storm windows” are broken out on some of the windows**
- **Interior windows won’t close all the way to lock properly**
- **All “pulley” ropes are broken**

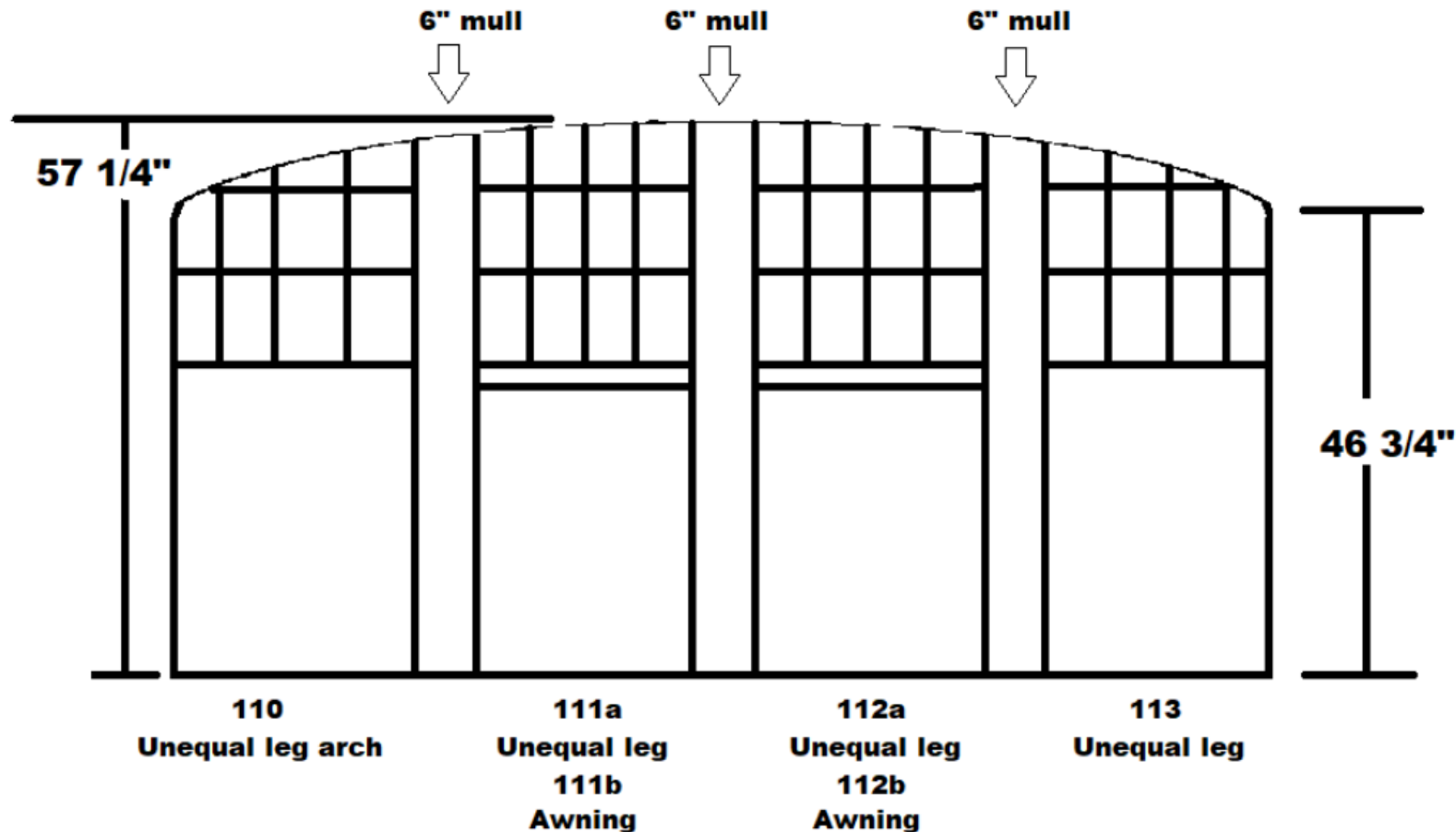


WINDOW OPENING 1

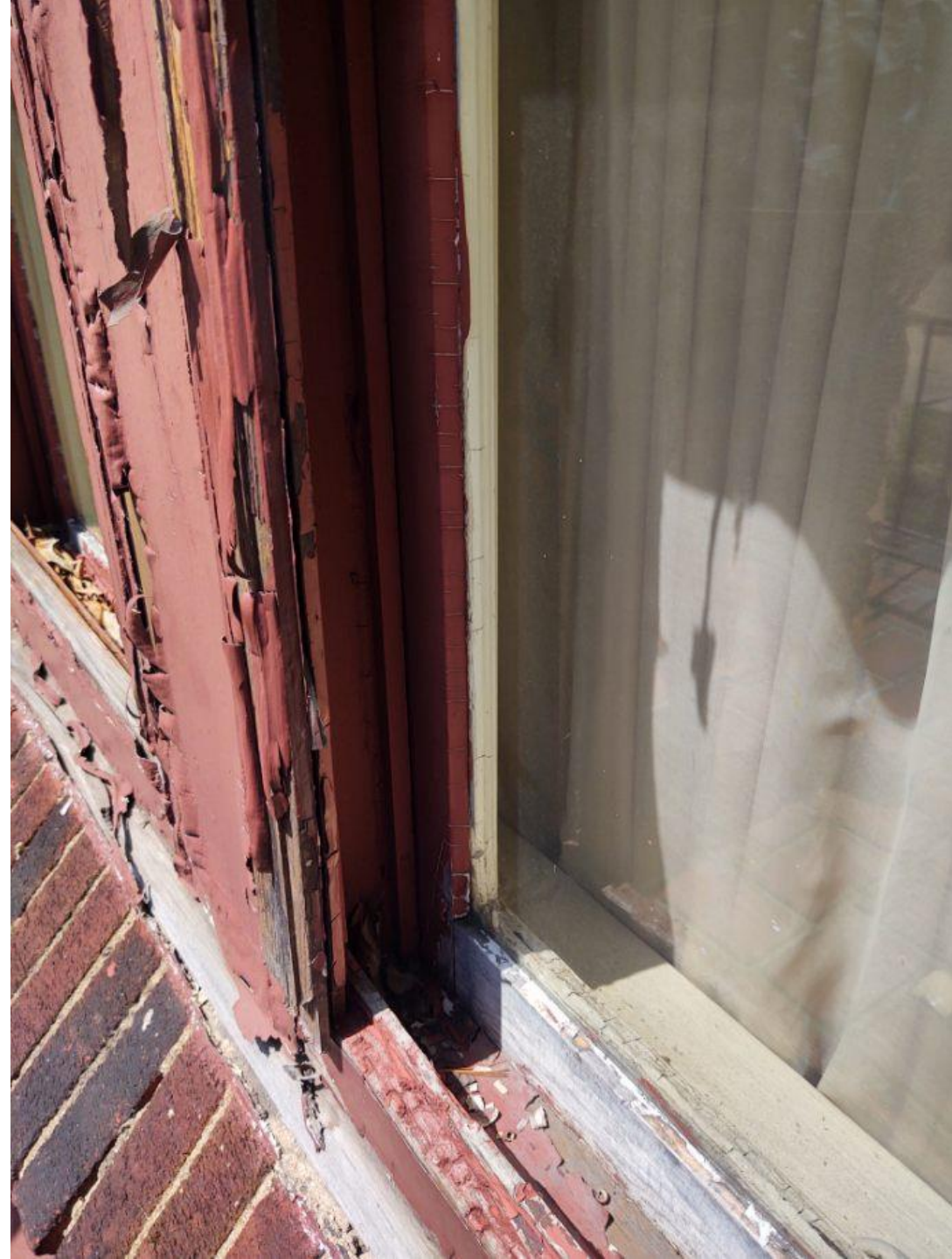
Living Room

Replacement:

- 110 – Unequal leg arch (non operable)
- 111 – Unequal leg arch (non operable) above an awning (operable)
- 112 – Unequal leg arch (non operable) above an awning (operable)
- 113 – Unequal leg arch (non operable)
- Matching grille pattern currently in the upper sashes with GBG or FDL.
- Fibrex – Wood Composite window
- Red rock exterior color
- No storm window units















WINDOW OPENING 2

Side area / stairwell Room

Existing:

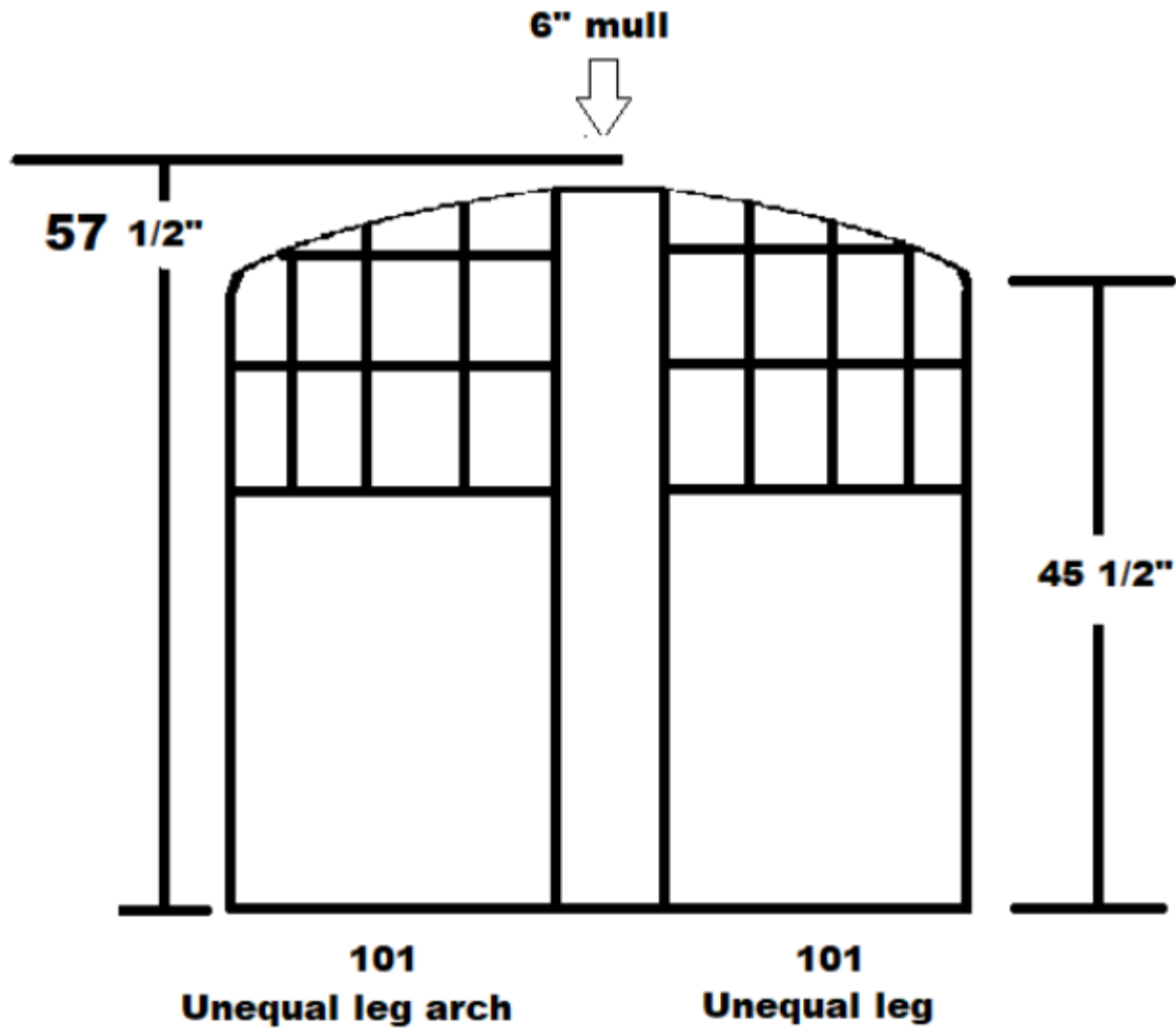
- **Double Hung**
- **Window is at bottom of stairs**
- **Exterior shows signs of deterioration and exterior has not been maintained**
- **Interior windows won't close all the way to lock properly**
- **All "pulley" ropes are broken**

WINDOW OPENING 1

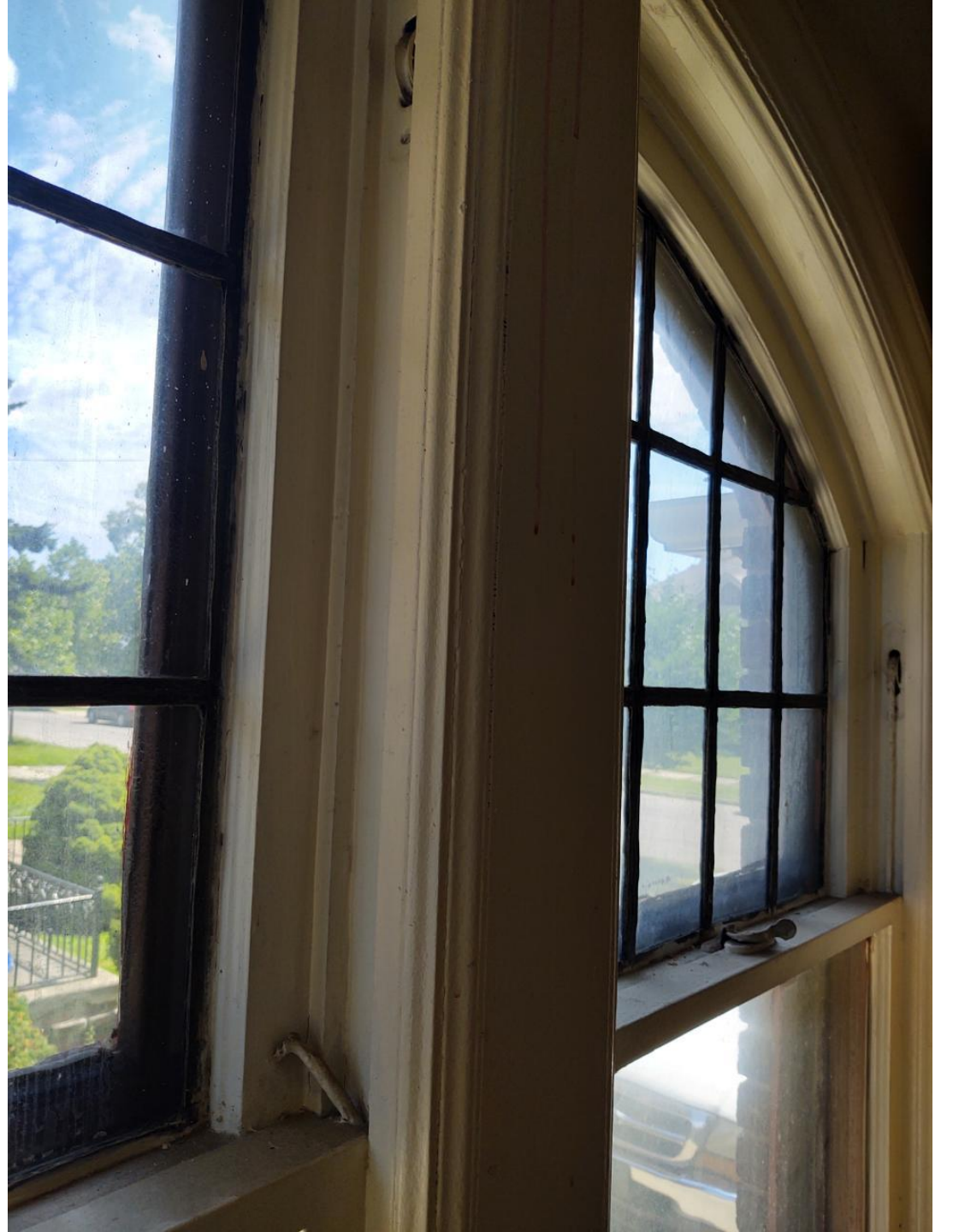
Living Room

Replacement:

- 101a – Unequal leg arch (non operable)
- 111b – Unequal leg arch (non operable)
- Matching grille pattern currently in the upper sashes with GBG or FDL.
- Fibrex – Wood Composite window
- Red rock exterior color
- No storm window units











FIBREX[®] MATERIAL: A BETTER ALTERNATIVE, A BETTER WINDOW

Reinventing the window

Innovation has been a hallmark of Andersen Corporation since its founding in 1903. From implementing “mass production” techniques in 1904 (nine years before Henry Ford), to producing the first completely assembled window unit in the industry (1926), to becoming the world’s largest specialized window frame factory in 1929, our guiding principle has always been to “make a product that is different and better.” Each step of the way we have incorporated the latest technologies, fine precision, and high standards in our quest to be better.

Introducing Fibrex[®] material

One of our most innovative ideas is Fibrex material. This revolutionary composite combines the strength and stability of wood with the low-maintenance features of vinyl. In fact, you might say it’s an evolutionary product—Andersen scientists developed the first hollow vinyl window in the U.S. in 1959, and engineered composite window materials in the 1960s and 1970s. In 1992, Andersen perfected composite window technology, and patented Fibrex material. Today, Fibrex material is the perfect choice for your new replacement windows.

	Fibrex® Material	Other Materials
Strength	Because Fibrex® material is strong, we can make our sash and frames narrower. Narrower frames mean more glass, more view.	Vinyl frames are known to have a higher expansion/contraction rate and can bow, breaking the glass seal.
Insulation	Fibrex material has superior thermal insulating properties. Combined with Andersen® High-Performance™ Low-E4® glass, this helps your home stay warmer in winter and cooler in summer. You can save money on your energy bills. Your home feels more comfortable.	Aluminum window frames conduct heat and cold. Heat leaks out of your house in the winter and into your house in the summer.
Low Maintenance	Fibrex material never needs scraping or painting. It won't rot, decay or mold*.	Fiberglass frames are painted and may need regular maintenance.
Beauty	Renewal by Andersen replacement windows preserve the architectural beauty of your home. Frame and sash design reflect the shape and lines of your original windows. The unique extruded Fibrex material can be made into any kind of window—including curved specialty windows.	Most replacement windows have square profiles that may look artificial in your home. Vinyl frame material is often thicker, reducing glass area. Fiberglass can only be made into straight lineals.
Environmental Responsibility	40% of the raw material by weight used to make Fibrex material is clean, reclaimed wood fiber. Reclaimed materials in the manufacturing process can also be reground and reused. Renewal by Andersen® windows meet Green Seal's science-based environmental certification standards as well as being ENERGY STAR® qualified for meeting strict energy efficiency criteria set by the U.S. Department of Energy.	Andersen windows are the only windows with Green Seal certification. Fiberglass is a thermoset material and cannot be reformed into new profiles.
Warranty	A window is not just glass and some framing material. It's a precise combination of glass, frame and quality installation. We back it all with a 20/2/10 Limited Warranty* that is one of the best in the business.	More than half of all remodeling firms have been in business less than four years.** Installation is rarely covered in the written warranty.