

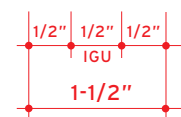
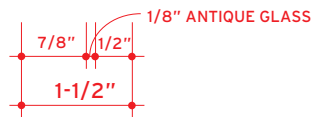
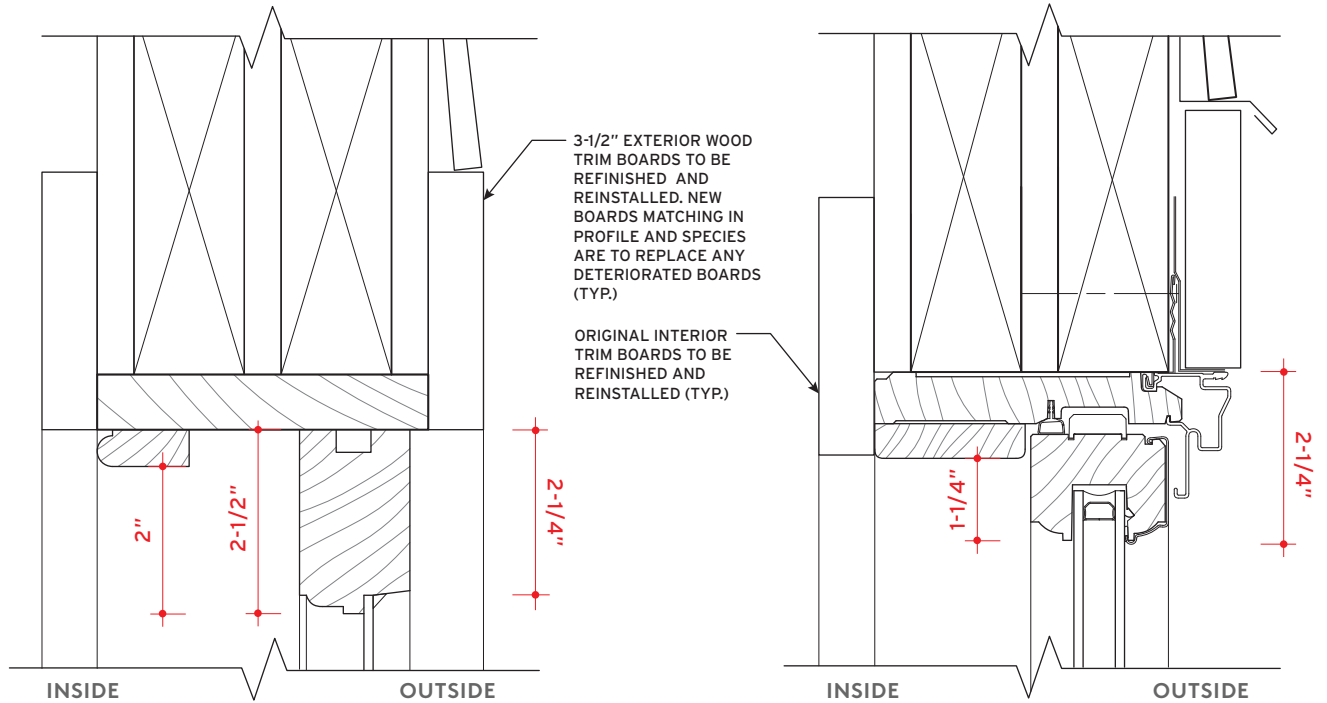
4138 Lincoln St. Renovation  
Window Details

A. DOUBLE-HUNG WINDOWS

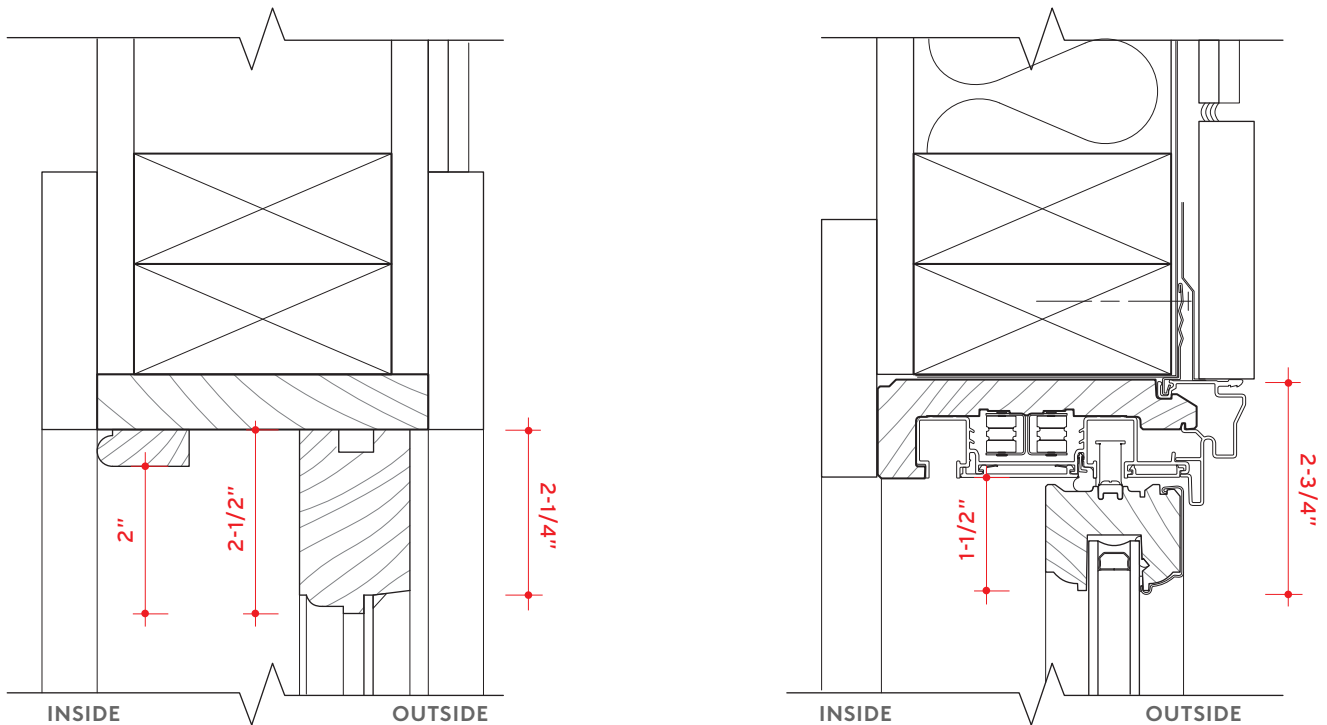
EXISTING WINDOW

REPLACEMENT WINDOW

HEAD



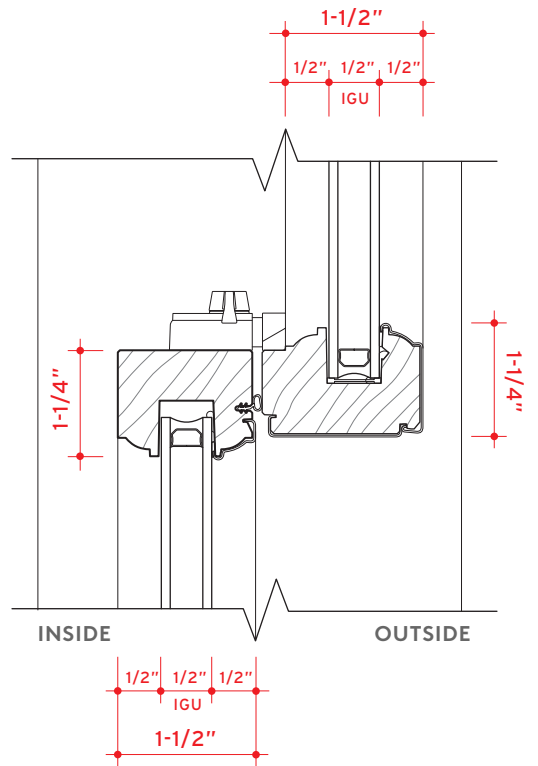
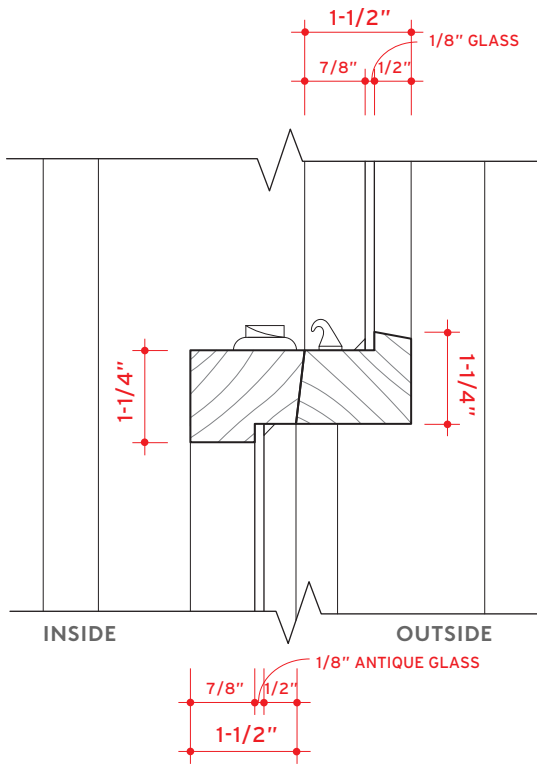
JAMB



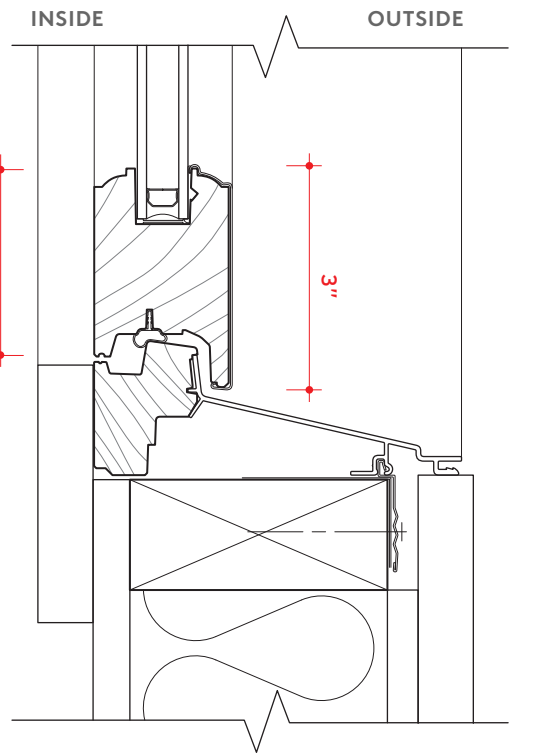
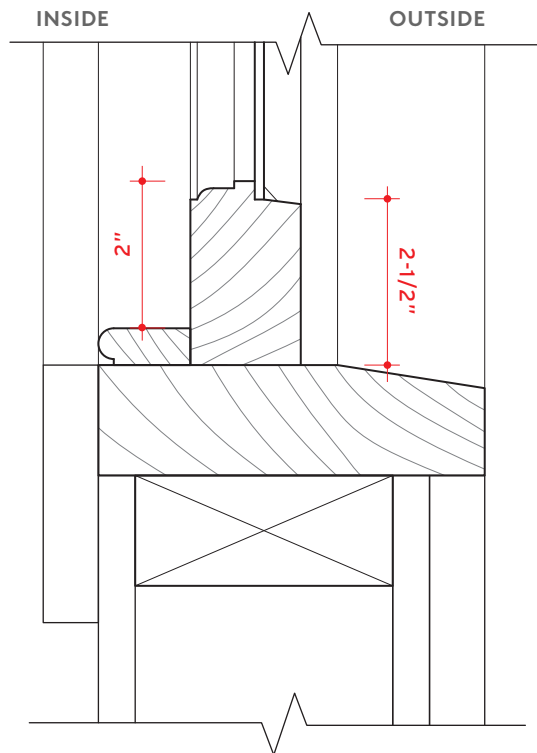
**EXISTING WINDOW**

**REPLACEMENT WINDOW**

MEETING RAIL



SILL

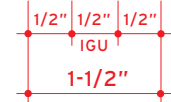
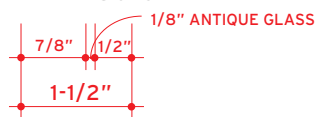
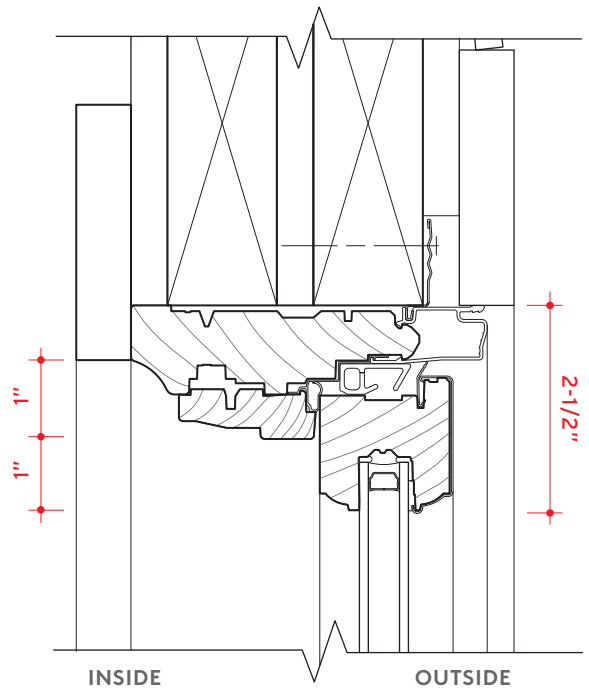
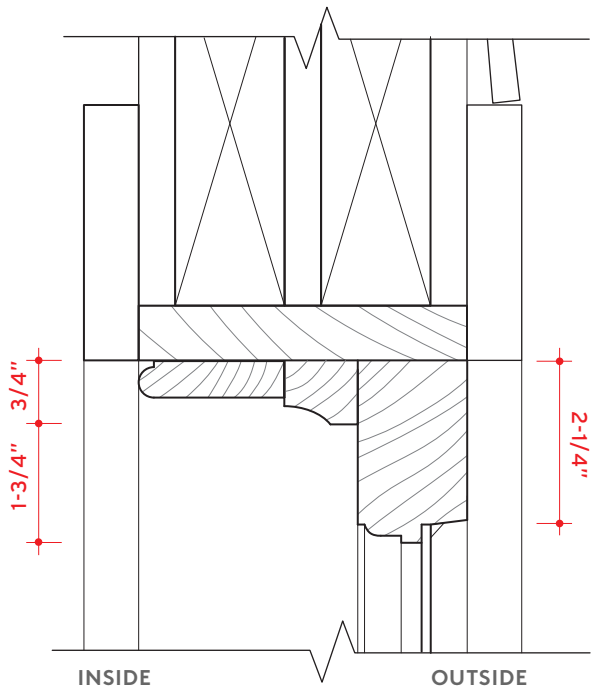


**B. FIXED WINDOWS**

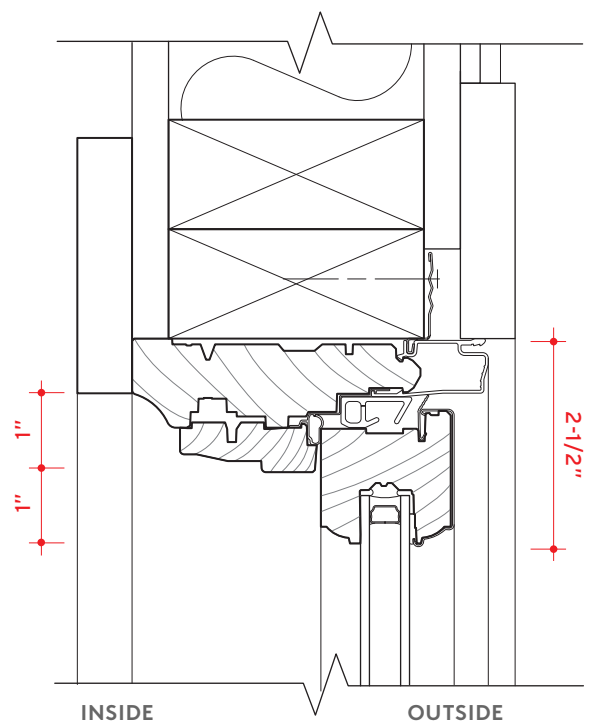
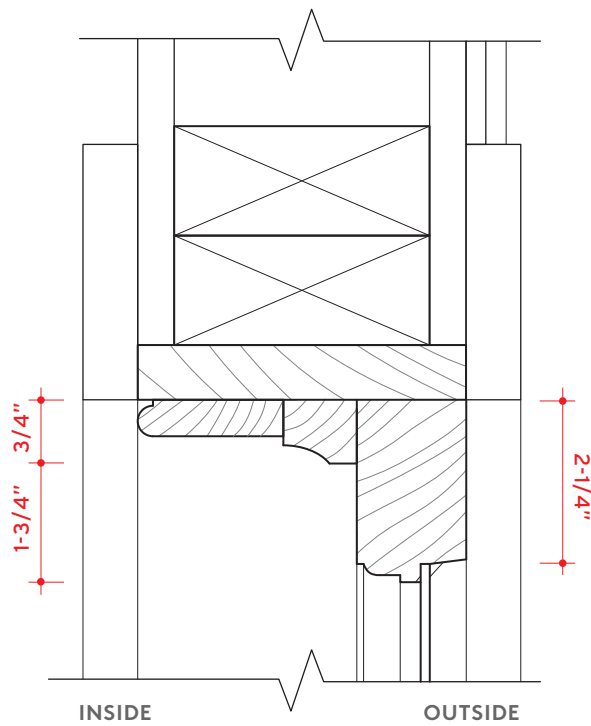
**EXISTING WINDOW**

**REPLACEMENT WINDOW**

**HEAD**



**JAMB**



## 4138 Lincoln St. Renovation

### Existing Window Conditions

#### Window 1.0

Location First Level, Front Facade (Southwest)  
Operation Double Hung  
Condition Meeting rail is separating from stile, bottom glass broken, closure hardware missing, weights and pulley hardware missing



#### Window 1.1

Location First Level, Front Facade (Southwest)  
Operation Fixed (Top and Bottom)  
Condition Entire bottom window missing (storm window only), some water damage at bottom of frame



## Window 1.2

Location First Level, Front Facade (Southwest)  
Operation Double Hung  
Condition Water damage to frame, stops are detached, weights and pulley hardware missing



## Window 1.5

Location First Level, Side Facade (Southeast)  
Operation Double Hung  
Condition Water damage to bottom of frame, both glass panes broken, weights and pulley hardware missing



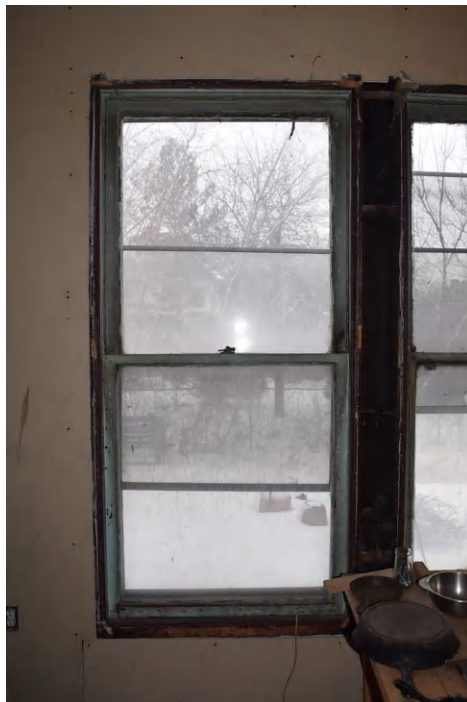
## Window 1.6

Location First Level, Side Facade (Southeast)  
Operation Double Hung  
Condition Water damage at bottom of frame, top sash rail detached from stile, weights and pulley hardware missing



## Window 1.7

Location First Level, Side Facade (Southeast)  
Operation Double Hung  
Condition Some water damage, frame is warping



## Window 1.8

Location First Level, Side Facade (Southeast)  
Operation Double Hung  
Condition Top rail of bottom window separating from stile, glass broken



## Window 2.0

Location Second Level, Front Facade (Southwest)  
Operation Single Hung  
Condition Operable sash glued shut, enamel paint on glass



## Window 2.1

Location First Level, Front Facade (Southwest)  
Operation Single Hung  
Condition Operable Sash glued shut, enamel paint on glass



## Window 2.2

Location Second Level, Front Facade (Southwest)  
Operation Double Hung (Bottom), Fixed (Top)  
Condition Enamel paint on glass, some sash warping





### Window 2.3

Location First Level, Front Facade (Southwest)  
Operation Double Hung (Bottom, Fixed (Top))  
Condition Water damage to bottom sash, broken closure hardware



### Window 2.8

Location Second Level, Side Facade (Southeast)  
Operation Double Hung  
Condition Bottom sash and portion of frame missing , water damage across entire frame



## Window 2.9

Location Second Level, Side Facade (Southeast)  
Operation Double Hung  
Condition Water damage to entire frame, bottom sash glass detached



## Window 2.10

Location Second Level, Side Facade (Southeast)  
Operation Double Hung  
Condition Water damage to entire frame, top sash detaching from frame, closure hardware missing, weights and pulley hardware missing



## Window 2.11

Location Second Level, Side Facade (Southeast), Stairway  
Operation Double Hung  
Condition Bottom sash rail detached from stile, some water damage to frame



## Window 3.0

Location Third Level, Front Facade (Southwest), Attic  
Operation Single Hung  
Condition Water damage to frame, glass missing from both sashes, gbroken and missing grille



### Window 3.1

Location Third Level, Front Facade (Southeast), Attic  
Operation Single Hung  
Condition Water damage to frame and bottom sash, broken and missing grille, glass missing



### Window 3.2

Location Third Level, Front Facade (Southwest), Attic  
Operation Single Hung  
Condition Water damage to frame and sash, broken grille

