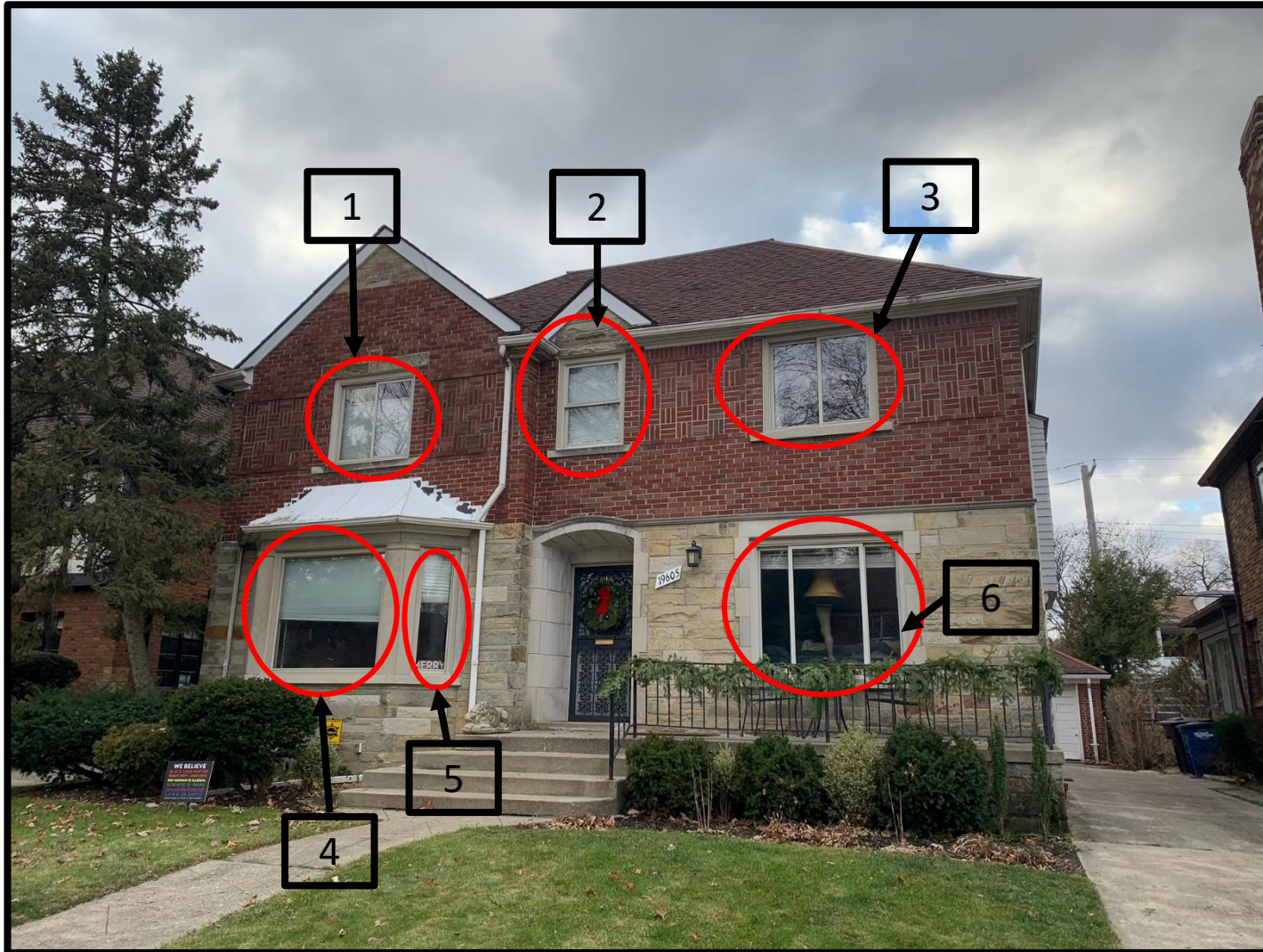


# 19605 Stratford Road

McCormack/Taylor Residence

# 19605 Stratford – Front



1 – Master Bedroom: Currently sliding without grid, putty color; caulked shut to prevent draft, seal broken causing condensation between panes

**Planned: 2-Wide Casement with grid, black color**

2 – Master Bathroom: Currently sliding without grid, putty color, seal broken causing condensation between panes

**Planned: Double Hung with grid, obscure glass, black color**

3 – Bedroom 1: Currently sliding without grid, putty color; caulked shut to prevent draft, caulked shut to prevent draft, seal broken causing condensation between panes

**Planned: 2-Wide Casement with grid, black color**

4 – Living Room: Currently fixed without grid, putty color, seal broken causing condensation between panes

**Planned: Direct Set Fixed Frame with grid, black color**

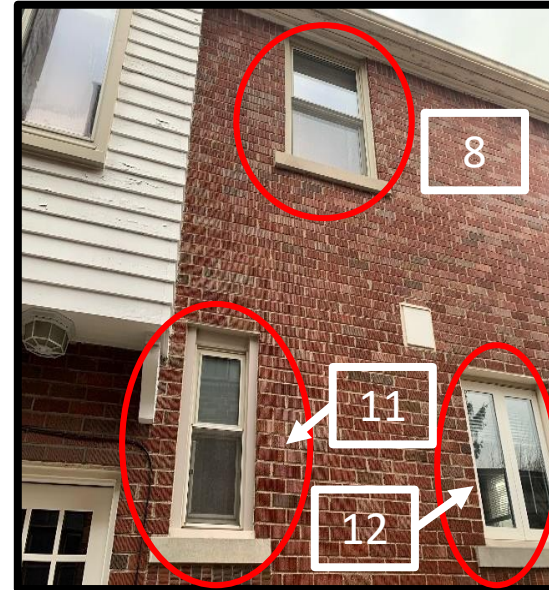
5 – Living Room: Currently fixed without grid, putty color, seal broken causing condensation between panes

**Planned: Casement with grid, black color**

6 – Den: 3 Wide Casement, putty color; seal broken causing condensation between panes

**Planned: 2-Wide Casement with grid, black color**

# 19605 Stratford Road – North Side



7 – Bedroom 1: Currently Single Hung without grid, putty color, seal broken causing condensation between panes

**Planned: Double Hung with grid, black color**

8 – Bedroom 2: Currently Single Hung without grid, putty color, seal broken causing condensation between panes

**Planned: Double Hung with grid, black color**

9 – Stairway Landing: Currently sliding without grid, putty color, seal broken causing condensation between panes

**Planned: Direct Set Fixed Frame with grid, black color**

10 – Den: Currently sliding without grid, putty color, seal broken causing condensation between panes

**Planned: 2 wide Double Hung with grid, black color**

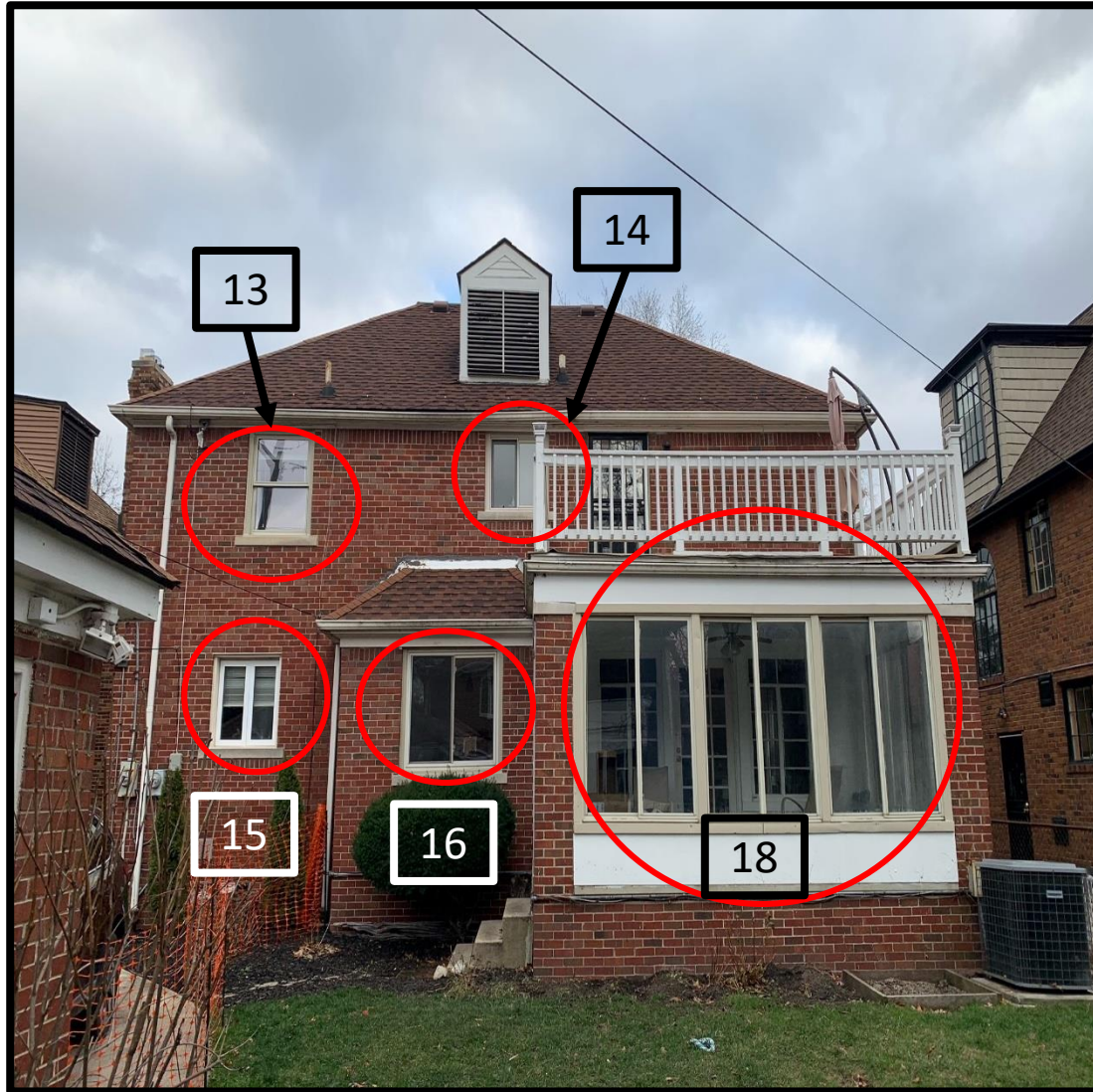
11 – Half Bathroom: Currently Single Hung without grid, putty color, obscure glass, seal broken causing condensation between panes

**Planned: Double Hung with grid, obscure glass, black color**

12 – Kitchen: Currently sliding without grid, white color, seal broken causing condensation between panes

**Planned: Double Hung with grid, black color**

# 19605 Stratford Road - Rear



13 – Bedroom 2: Currently Single Hung without grid, putty color, seal broken causing condensation between panes  
**Planned: Double Hung with grid, black color**

14 – Hall Bathroom: Currently Single Hung without grid, putty color, obscure glass, seal broken causing condensation between panes  
**Planned: Double Hung with grid, obscure glass, black color**

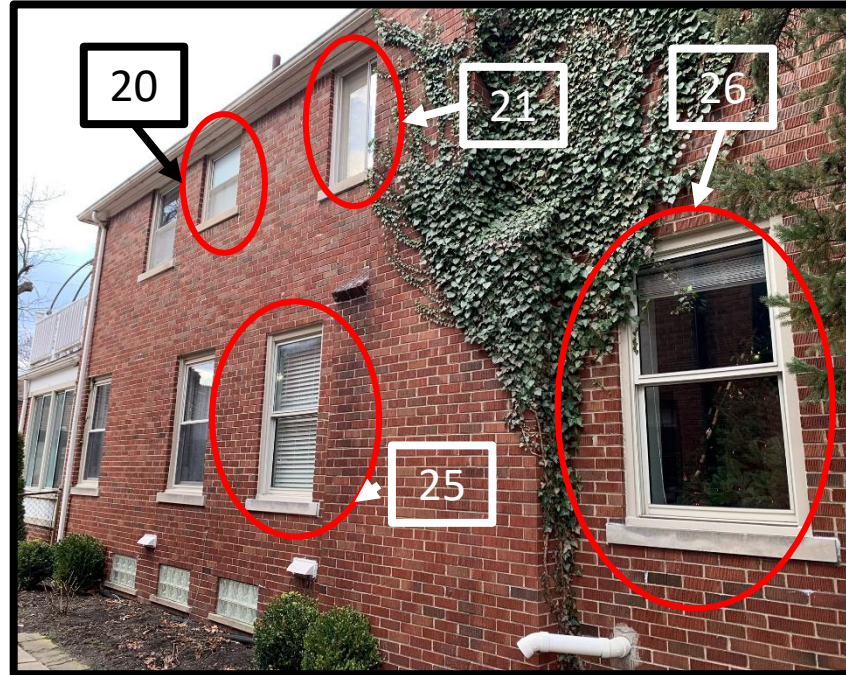
15 – Kitchen: Currently sliding without grid, white color, seal broken causing condensation between panes  
**Planned: Double Hung with grid, black color**

16 – Breakfast Room: Currently sliding without grid, putty color, seal broken causing condensation between panes  
**Planned: Sliding Window with grid, black color**

17 – Sunroom: Currently Sliding Door, aluminum color, gaps between frame and door allowing weather/draft  
**Planned: Double sliding door fixed, black color**

18 – Sunroom: Currently 3 wide sliding without grid, putty color, windows do not close; unsecured  
**Planned: 3 wide sliding without grid, black color**

# 19605 Stratford Road – South Side



19 – Bedroom 3: Currently single hung without grid, putty color; caulked shut to prevent draft, seal broken causing condensation between panes

**Planned: Double Hung with grid, black color**

20 – Bathroom 3 Bath: Currently Single Hung without grid, putty color, obscure glass, seal broken causing condensation between panes

**Planned: Double Hung with grid, obscure glass, black color**

21 – Master Bedroom: Currently sliding without grid, putty color; caulked shut to prevent draft, caulked shut to prevent draft, seal broken causing condensation between panes

**Planned: 2-Wide Casement with grid, black color**

22 – Sunroom: Currently 2 wide sliding without grid, putty color, windows do not close; unsecured

**Planned: 2 wide sliding without grid, black color**

23 – Dining Room: Currently Single Hung without grid, putty color.

**Planned: Double Hung with grid, black color**



24 – Dining Room: Currently Single Hung without grid, putty color.

**Planned: Double Hung with grid, black color**

25 – Living Room: Currently Single Hung without grid, putty color.

**Planned: Double Hung with grid, black color**

26 – Living Room: Currently Single Hung without grid, putty color.

**Planned: Double Hung with grid, black color**

27 - Living Room: Currently fixed without grid, putty color, seal broken causing condensation between panes

**Planned: Casement with grid, black color**