



James Haskins
19365 Warrington Dr
Detroit MI 48221
Sherwood Forest District

Renewal by Andersen 37720 Amrhein Livonia, MI 48150

- Homeowner wants to replace all the windows around house except for one stained glass window unit
- Windows are original steel
- Renewal by Andersen windows are Fibrex (wood composite) material
- Total of 24 windows to be replaced
- Windows exterior color will be black if approved
- Most windows matching style except for bay windows – flankers changed to operable and middle window changed to fixed.
- Windows will match existing mutton bar “pattern”
- Homeowner unable to get quotes for repair



Front of house



Right side (from drive)



Left side (from street)



Back of house





101

101

WINDOW OPENING 101 Living Room - Front of House

Existing:

- Fixed window – Steel casement
- Window is in Living room
- Window is hard to close if opened
- Exterior of window showing signs of rotting around frame

New:

Window: Casement, Single, Left, Base Frame, 2" Brickmould / Traditional, Exterior Black, Interior Black, **Glass:** All Sash: High Performance SmartSun Glass, No Pattern, Tempered Glass, **Hardware:** Black, **Screen:** Fiberglass, Full Screen, **Grille Style:** Grilles Between Glass (GBG), **Grille Pattern:** All Sash: Colonial 2w x 5h, **Misc:** None





101



WINDOW OPENING 102 Living Room - Front of House

Existing:

- Double casement
- Window is in Living room
- Window is hard to close if opened
- Exterior of window showing signs of rotting around frame
- Missing screen

New:

Window: Casement, Fixed Window, Base Frame, Exterior Black, Interior Black, **Glass:** All Sash: High Performance SmartSun Glass, No Pattern, Tempered Glass, **Grille Style:** Grilles Between Glass (GBG), **Grille Pattern:** All Sash: Colonial 6w x 5h, **Misc:** None



102





102



102





WINDOW OPENING 103

Living Room - Front of House

Existing:

- Fixed window – Steel casement
- Window is in Living room
- Window is hard to close if opened
- Exterior of window showing signs of rotting around frame – bottom exterior sill missing

New:

Window: Casement, Single, Right, Base Frame, 2"

Brickmould / Traditional, Exterior Black, Interior Black, **Glass:**

All Sash: High Performance SmartSun Glass, No Pattern, Tempered Glass, **Hardware:** Black, **Screen:** Fiberglass, Full

Screen, **Grille Style:** Grilles Between Glass (GBG), **Grille**

Pattern: All Sash: Colonial 2w x 5h, **Misc:** None



103





103



WINDOW OPENING 104

Living Room – Right side of House

Existing:

- Single Casement window
- Window is in Living room
- Window is hard to close if opened
- Exterior of window showing signs of rotting around frame

New:

Window: Casement, Single, Left, Base Frame, 2" Brickmould / Traditional, Exterior Black, Interior Black, **Glass:** All Sash: High Performance SmartSun Glass, No Pattern, **Hardware:** Black, **Screen:** Fiberglass, Full Screen, **Grille Style:** Grilles Between Glass (GBG), **Grille Pattern:** All Sash: Colonial 4w x 4h, **Misc:** None





104





WINDOW OPENING 105

Living Room - Right side of House

Existing:

- Single Casement window
- Window is in Living room
- Window doesn't open
- Windowpane cracked
- Missing screen

New:

Window: Casement, Single, Left Base Frame, 2" Brickmould / Traditional, Exterior Black, Interior Black, **Glass:** All Sash: High Performance SmartSun Glass, No Pattern, **Hardware:** Black, **Screen:** Fiberglass, Full Screen, **Grille Style:** Grilles Between Glass (GBG), **Grille Pattern:** All Sash: Colonial 4w x 4h, **Misc:** None

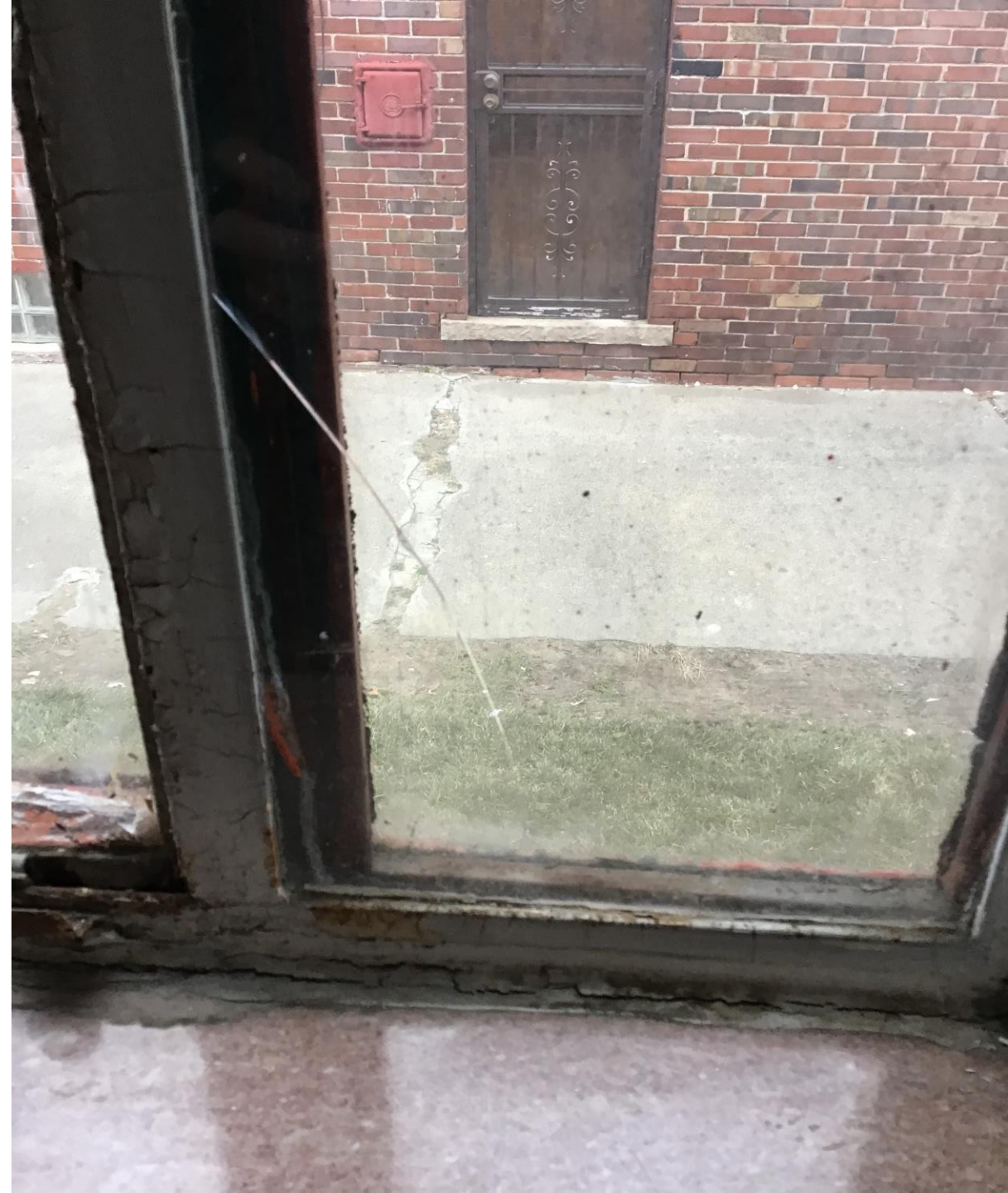
105





105





105

WINDOW OPENING 106

Dining Room - Right side of House

Existing:

- Single Casement Window
- Window is in Dining room
- Window is hard to close if opened
- Exterior of window is rotting
- Screen missing

New:

Window: Casement, Single, Left, Base Frame, 2" Brickmould / Traditional, Exterior Black, Interior Black, **Glass:** All Sash: High Performance SmartSun Glass, No Pattern, **Hardware:** Black, **Screen:** Fiberglass, Full Screen, **Grille Style:** Grilles Between Glass (GBG), **Grille Pattern:** All Sash: Colonial 4w x 4h, **Misc:** None



106







106



WINDOW OPENING 107

Dining Room - Right side of House

Existing:

- Single Casement Window
- Window is in Dining room
- Window is hard to close if opened
- Windowpane cracked
- Screen missing

New:

Window: Casement, Single, Left, Base Frame, 2" Brickmould / Traditional, Exterior Black, Interior Black, **Glass:** All Sash: High Performance SmartSun Glass, No Pattern, **Hardware:** Black, **Screen:** Fiberglass, Full Screen, **Grille Style:** Grilles Between Glass (GBG), **Grille Pattern:** All Sash: Colonial 4w x 4h, **Misc:** None



107





107



107





108

WINDOW OPENING 108

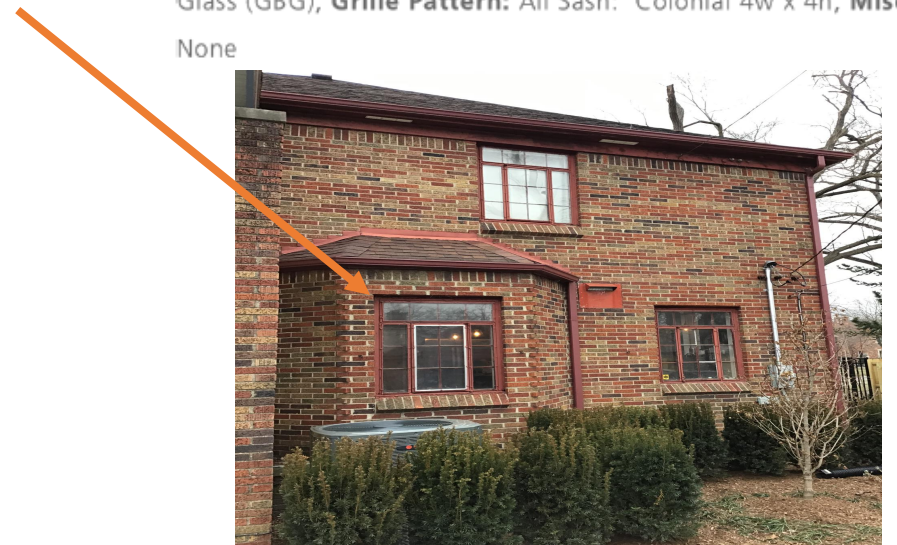
Kitchen - Back of House

Existing:

- Single Casement Window
- Window is in Kitchen
- Window doesn't open
- Exterior sill is rotted, can see through
- Interior sill is cracked
- Windowpane cracked
- Screen missing

New:

Window: Casement, Single, Left, Base Frame, 2" Brickmould / Traditional, Exterior Black, Interior Black, **Glass:** All Sash: High Performance SmartSun Glass, No Pattern, **Hardware:** Black, **Screen:** TruScene, Full Screen, **Grille Style:** Grilles Between Glass (GBG), **Grille Pattern:** All Sash: Colonial 4w x 4h, **Misc:** None

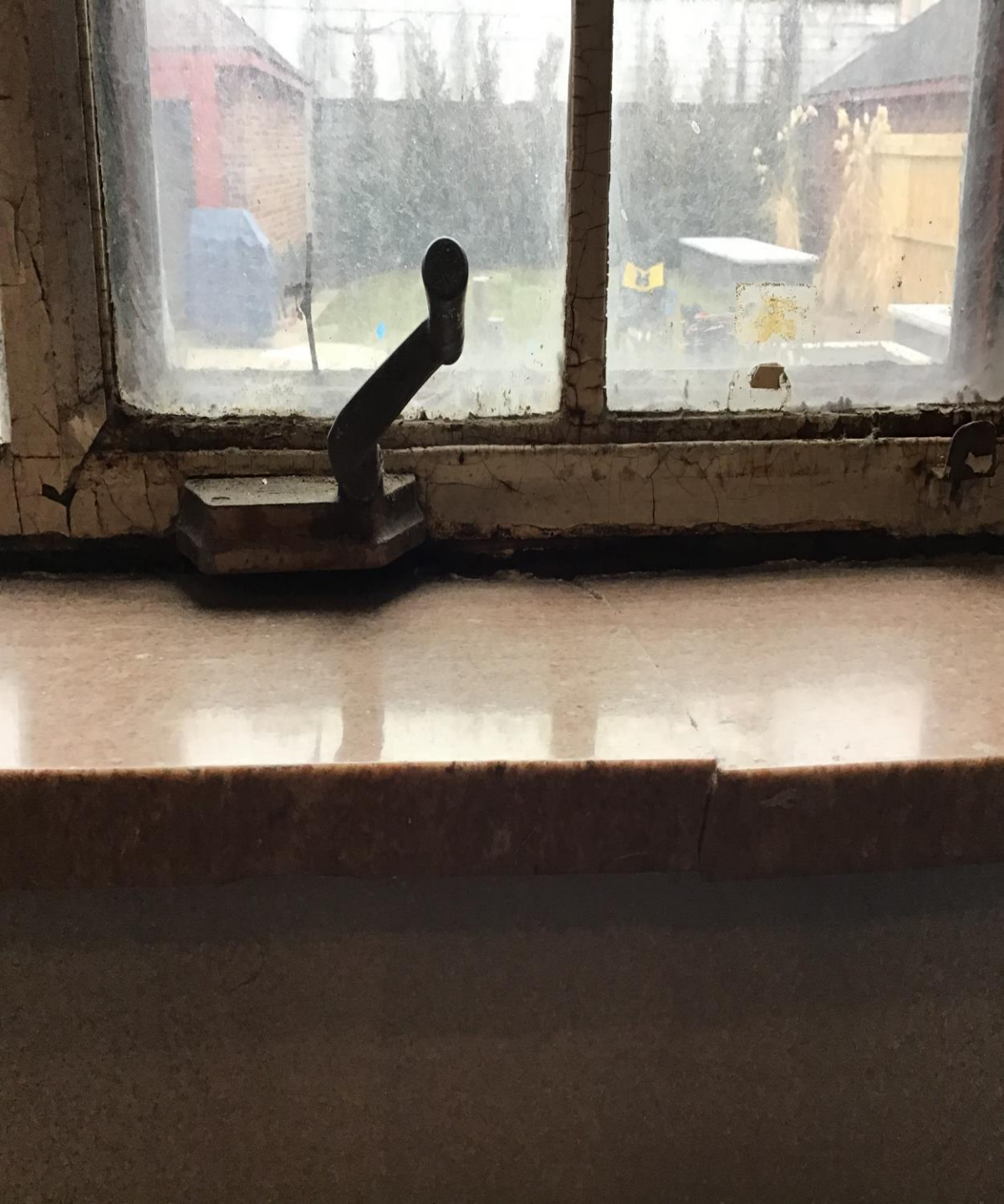






108





108



108

WINDOW OPENING 109 Kitchen - Back of House

Existing:

- Single Casement Window
- Window is in Kitchen
- Window won't open
- Broken and cracked windowpanes

New:

Window: Casement, Single, Right, Base Frame, 2"

Brickmould / Traditional, Exterior Black, Interior Black, **Glass:**

All Sash: High Performance SmartSun Glass, No Pattern,

Hardware: Black, **Screen:** Fiberglass, Full Screen, **Grille Style:**

Grilles Between Glass (GBG), **Grille Pattern:** All Sash:

Colonial 4w x 4h, **Misc:** None



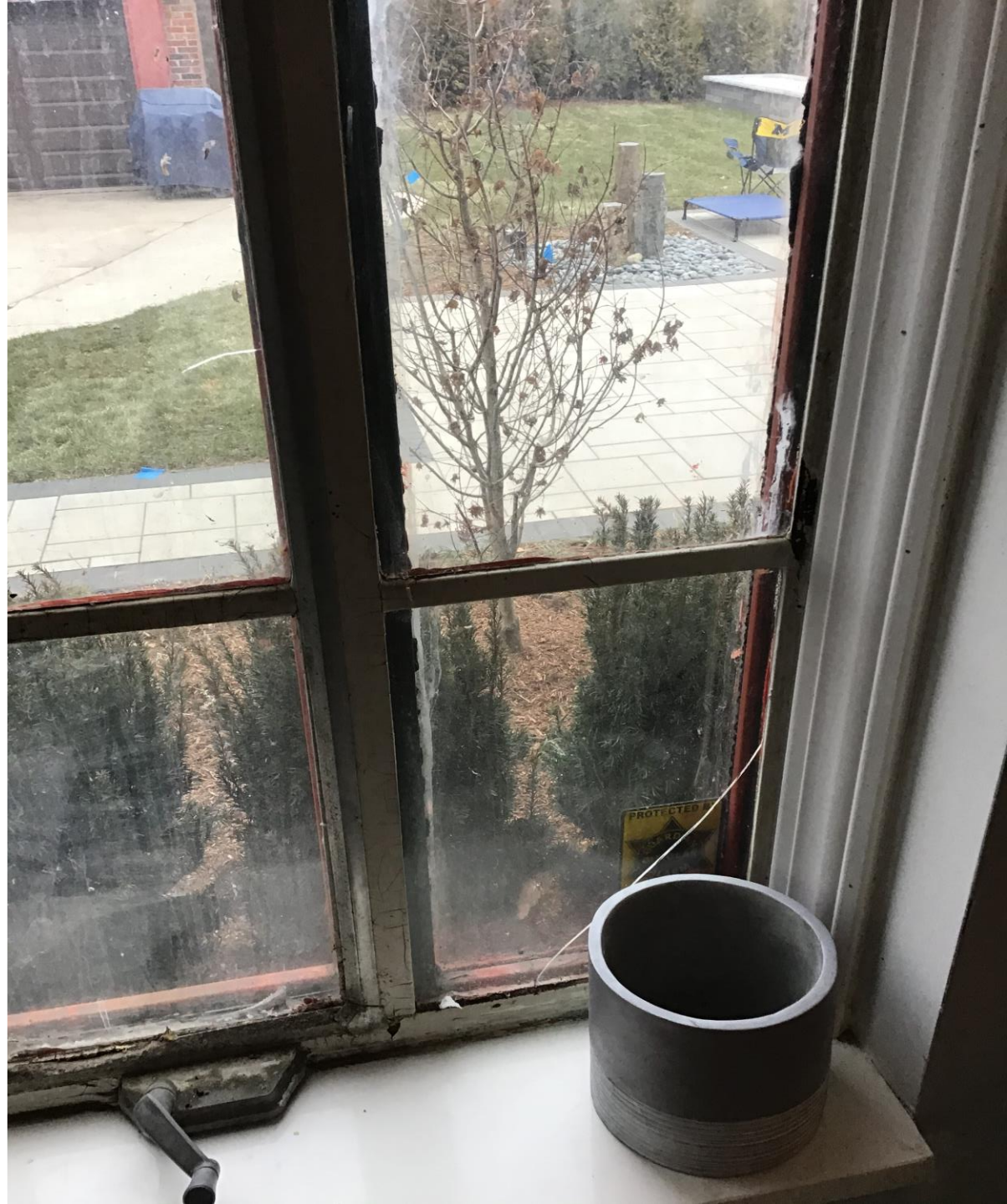
109





109





109



109



109





110

WINDOW OPENING 110 Kitchen – Left side of House

Existing:

- Single Casement Window
- Window is in Kitchen
- Window won't open
- Exterior of window showing signs of rotting around frame and exterior window shows breakage
- Interior casing is missing/broken

New:

Window: Casement, Single, Left, Base Frame, 2" Brickmould / Traditional, Exterior Black, Interior Black, **Glass:** All Sash: High Performance SmartSun Glass, No Pattern, **Hardware:** Black, **Screen:** TruScene, Full Screen, **Grille Style:** Grilles Between Glass (GBG), **Grille Pattern:** All Sash: Colonial 3w x 4h, **Misc:** None







110



WINDOW OPENING 111

Bathroom - Left side of House

Existing:

- Single Casement Window
- Window is in Bathroom
- Window doesn't open
- Exterior of window showing signs of rotting around frame

New:

Window: Casement, Single, Left, Base Frame, 2" Brickmould / Traditional, Exterior Black, Interior Black, **Glass:** All Sash: High Performance SmartSun Glass, Obscure, **Hardware:** Black, **Screen:** Fiberglass, Full Screen, **Grille Style:** Grilles Between Glass (GBG), **Grille Pattern:** All Sash: Colonial 2w x 3h, **Misc:** None



111





111





WINDOW OPENING 112 Office - Left side of House

Existing:

- Fixed window – Steel casement
- Window is in an office
- Window doesn't open
- Ivy stuck between window and storm
- Exterior of window showing signs of rotting around frame

New:

Window: Casement, Single, Left, Base Frame, 2" Brickmould / Traditional, Exterior Black, Interior Black, **Glass:** All Sash: High Performance SmartSun Glass, No Pattern, **Hardware:** Black, **Screen:** Fiberglass, Full Screen, **Grille Style:** Grilles Between Glass (GBG), **Grille Pattern:** All Sash: Colonial 2w x 4h, **Misc:** None



112



112







113

WINDOW OPENING 113 Office - Left side of House

Existing:

- Casement Single Window
- Window is in an office
- Window is hard to close if opened
- Exterior of window showing signs of rotting around frame

New:

Window: Casement, Fixed Window, Base Frame, Exterior Black, Interior Black, **Glass:** All Sash: High Performance SmartSun Glass, No Pattern, **Grille Style:** Grilles Between Glass (GBG), **Grille Pattern:** All Sash: Colonial 4w x 4h, **Misc:** None





113





114

WINDOW OPENING 114 Office - Left side of House

- Fixed window – Steel casement
- Window is in an office
- Ivy stuck between window and storm
- Exterior of window showing signs of rotting around frame

New:

Window: Casement, Single, Right, Base Frame, 2"

Brickmould / Traditional, Exterior Black, Interior Black, **Glass:**

All Sash: High Performance SmartSun Glass, No Pattern,

Hardware: Black, **Screen:** Fiberglass, Full Screen, **Grille Style:**

Grilles Between Glass (GBG), **Grille Pattern:** All Sash:

Colonial 2w x 4h, **Misc:** None







114





114



WINDOW OPENING 115 Office - Front of House

Existing:

- Casement Single Window
- Window is in an office
- Window is hard to close if opened
- Exterior of window showing signs of rotting around frame

New:

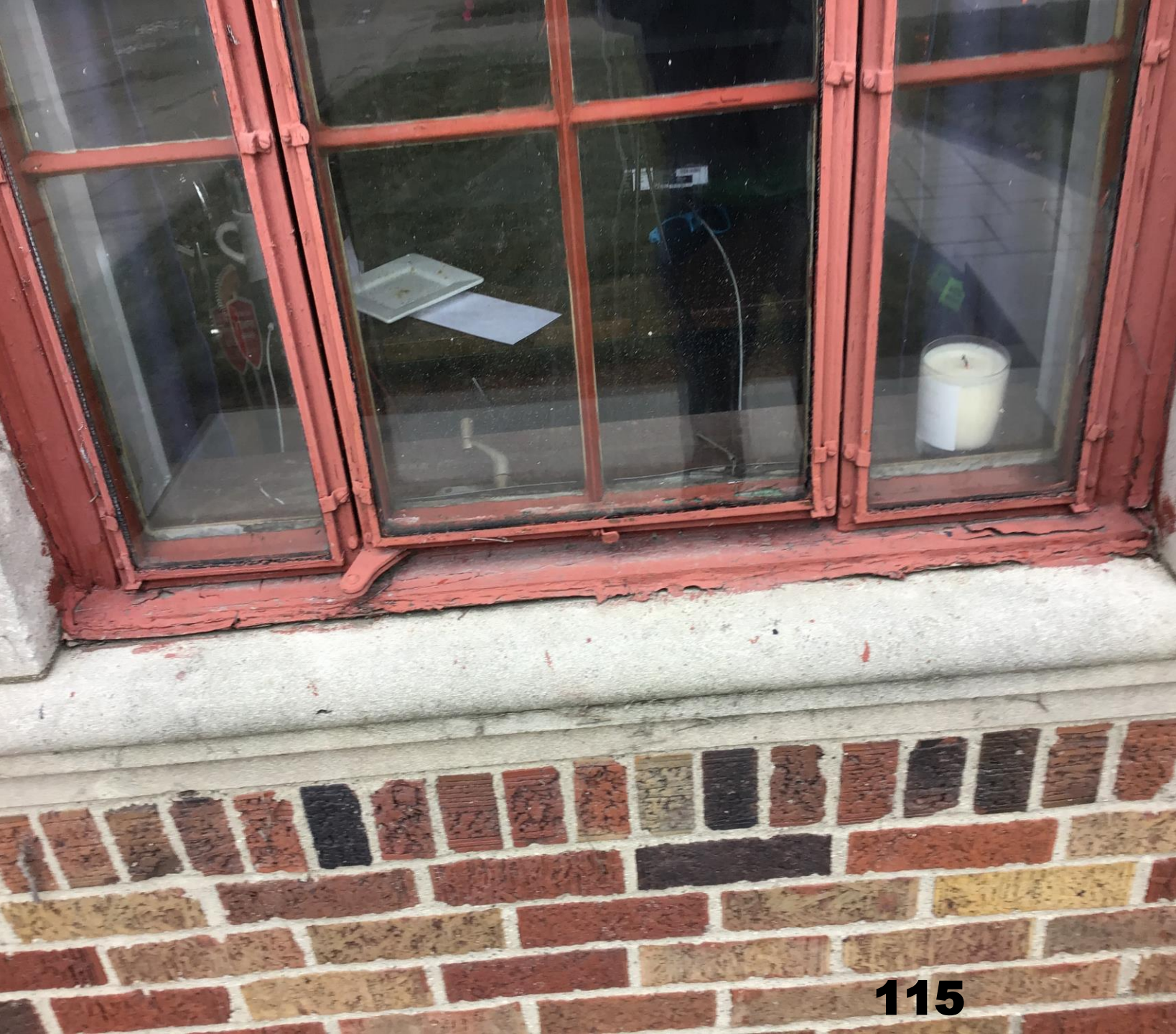
Window: Casement, Single, Left, Base Frame, 2" Brickmould / Traditional, Exterior Black, Interior Black, **Glass:** All Sash: High Performance SmartSun Glass, No Pattern, **Hardware:** Black, **Screen:** TruScene, Full Screen, **Grille Style:** Grilles Between Glass (GBG), **Grille Pattern:** All Sash: Colonial 4w x 4h, **Misc:** None





115





115





115



WINDOW OPENING 201 Office – Left side of House

Existing:

- Casement Single Window
- Window is in an office
- Window is hard to close if opened
- Exterior of window showing signs of rotting around frame

New:

Window: Casement, Single, Left, Base Frame, 2" Brickmould / Traditional, Exterior Black, Interior Black, **Glass:** All Sash: High Performance SmartSun Glass, No Pattern, **Hardware:** Black, **Screen:** Fiberglass, Full Screen, **Grille Style:** Grilles Between Glass (GBG), **Grille Pattern:** All Sash: Colonial 4w x 4h, **Misc:** None

201







201





201





WINDOW OPENING 202 Office – Front of House

Existing:

- Casement Single Window
- Window is in an office
- Window is hard to close if opened
- Exterior of window showing signs of rotting around frame

New:

Window: Casement, Single, Left, Base Frame, 2" Brickmould / Traditional, Exterior Black, Interior Black, **Glass:** All Sash: High Performance SmartSun Glass, No Pattern, **Hardware:** Black, **Screen:** Fiberglass, Full Screen, **Grille Style:** Grilles Between Glass (GBG), **Grille Pattern:** All Sash: Colonial 4w x 4h, **Misc:** None

202





202





WINDOW OPENING 203 Bathroom - Front of House

Existing:

- Single Casement Window
- Window is in a bathroom
- Window is hard to close if opened
- Exterior of window showing signs of rotting around frame

New:

Window: Casement, Single, Left, Base Frame, 2" Brickmould / Traditional, Exterior Black, Interior Black, **Glass:** All Sash: High Performance SmartSun Glass, No Pattern, Tempered Glass, **Hardware:** Black, **Screen:** Fiberglass, Full Screen, **Grille Style:** Grilles Between Glass (GBG), **Grille Pattern:** All Sash: Colonial 2w x 4h, **Misc:** None

203





203

WINDOW OPENING 204 Bedroom - Front of House

Existing:

- Double Casement Window
- Window is in Bedroom
- Window doesn't open
- Exterior of window showing signs of rotting around frame

New:

Window: Casement, Double, Vented, Base Frame, 2"

Brickmould / Traditional, Exterior Black, Interior Black, **Glass:**

All Sash: High Performance SmartSun Glass, No Pattern,

Hardware: Black, Wide Opening Hinge, **Screen:** TruScene, Full

Screen, **Grille Style:** Grilles Between Glass (GBG), **Grille**

Pattern: All Sash: Colonial 3w x 4h, **Misc:** None



204





204



WINDOW OPENING 205 Bedroom – Right side of House

Existing:

- Single Casement Window
- Window is in Bedroom
- Window is hard to close if opened
- Exterior of window showing signs of rotting around frame

New:

Window: Casement, Single, Right, Base Frame, 2"

Brickmould / Traditional, Exterior Black, Interior Black, **Glass:**

All Sash: High Performance SmartSun Glass, No Pattern,

Hardware: Black, **Screen:** Fiberglass, Full Screen, **Grille Style:**

Grilles Between Glass (GBG), **Grille Pattern:** All Sash:

Colonial 4w x 4h, **Misc:** None





205

WINDOW OPENING 206 Bedroom - Right side of House

Existing:

- Single Casement Window
- Window is in Bedroom
- Window is hard to close if opened
- Exterior of window showing signs of rotting around frame

New:

Window: Casement, Single, Right, Base Frame, Exterior Black, Interior Black, **Glass:** All Sash: High Performance SmartSun Glass, Obscure, Tempered Glass, **Hardware:** Black, Wide Opening Hinge, **Screen:** Fiberglass, Full Screen, **Grille Style:** Grilles Between Glass (GBG), **Grille Pattern:** All Sash: Colonial 4w x 4h, **Misc:** None







206



207

WINDOW OPENING 207 Bedroom - Right side of House

Existing:

- Double Casement Window
- Window is in Bedroom
- Window is hard to close if opened
- Exterior of window showing signs of rotting around frame

New:

Window: Casement, Double, Vented, Base Frame, 2"

Brickmould / Traditional, Exterior Black, Interior Black, **Glass:**

All Sash: High Performance SmartSun Glass, No Pattern,

Hardware: Black, Wide Opening Hinge, **Screen:** Fiberglass,

Full Screen, **Grille Style:** Grilles Between Glass (GBG), **Grille**

Pattern: All Sash: Colonial 3w x 4h, **Misc:** None





207



WINDOW OPENING 208 Bedroom - Back of House

Existing:

- Single Casement Window
- Window is in Bedroom
- Window is hard to close if opened
- Exterior of window showing signs of rotting around frame

New:

Window: Casement, Single, Left, Base Frame, 2" Brickmould / Traditional, Exterior Black, Interior Black, **Glass:** All Sash: High Performance SmartSun Glass, No Pattern, **Hardware:** Black, Wide Opening Hinge, **Screen:** Fiberglass, Full Screen, **Grille Style:** Grilles Between Glass (GBG), **Grille Pattern:** All Sash: Colonial 4w x 4h, **Misc:** None





208





208





208





208



WINDOW OPENING 209 Bedroom – Left Side of House

Existing:

- Single Casement Window
- Window is in Bedroom
- Window doesn't open
- Exterior of window showing signs of rotting around frame

New:

Window: Casement, Single, Right, Base Frame, 2"

Brickmould / Traditional, Exterior Black, Interior Black, **Glass:**

All Sash: High Performance SmartSun Glass, No Pattern,

Hardware: Black, Wide Opening Hinge, **Screen:** Fiberglass,

Full Screen, **Grille Style:** Grilles Between Glass (GBG), **Grille**

Pattern: All Sash: Colonial 4w x 4h, **Misc:** None



209





209



209



FIBREX[®] MATERIAL: A BETTER ALTERNATIVE, A BETTER WINDOW

Reinventing the window

Innovation has been a hallmark of Andersen Corporation since its founding in 1903. From implementing “mass production” techniques in 1904 (nine years before Henry Ford), to producing the first completely assembled window unit in the industry (1926), to becoming the world’s largest specialized window frame factory in 1929, our guiding principle has always been to “make a product that is different and better.” Each step of the way we have incorporated the latest technologies, fine precision, and high standards in our quest to be better.

Introducing Fibrex[®] material

One of our most innovative ideas is Fibrex material. This revolutionary composite combines the strength and stability of wood with the low-maintenance features of vinyl. In fact, you might say it’s an evolutionary product—Andersen scientists developed the first hollow vinyl window in the U.S. in 1959, and engineered composite window materials in the 1960s and 1970s. In 1992, Andersen perfected composite window technology, and patented Fibrex material. Today, Fibrex material is the perfect choice for your new replacement windows.

	Fibrex® Material	Other Materials
Strength	Because Fibrex® material is strong, we can make our sash and frames narrower. Narrower frames mean more glass, more view.	Vinyl frames are known to have a higher expansion/contraction rate and can bow, breaking the glass seal.
Insulation	Fibrex material has superior thermal insulating properties. Combined with Andersen® High-Performance™ Low-E4® glass, this helps your home stay warmer in winter and cooler in summer. You can save money on your energy bills. Your home feels more comfortable.	Aluminum window frames conduct heat and cold. Heat leaks out of your house in the winter and into your house in the summer.
Low Maintenance	Fibrex material never needs scraping or painting. It won't rot, decay or mold*.	Fiberglass frames are painted and may need regular maintenance.
Beauty	<p>Renewal by Andersen replacement windows preserve the architectural beauty of your home. Frame and sash design reflect the shape and lines of your original windows.</p> <p>The unique extruded Fibrex material can be made into any kind of window—including curved specialty windows.</p>	<p>Most replacement windows have square profiles that may look artificial in your home. Vinyl frame material is often thicker, reducing glass area.</p> <p>Fiberglass can only be made into straight lineals.</p>
Environmental Responsibility	40% of the raw material by weight used to make Fibrex material is clean, reclaimed wood fiber. Reclaimed materials in the manufacturing process can also be reground and reused. Renewal by Andersen® windows meet Green Seal's science-based environmental certification standards as well as being ENERGY STAR® qualified for meeting strict energy efficiency criteria set by the U.S. Department of Energy.	<p>Andersen windows are the only windows with Green Seal certification.</p> <p>Fiberglass is a thermoset material and cannot be reformed into new profiles.</p>
Warranty	A window is not just glass and some framing material. It's a precise combination of glass, frame and quality installation. We back it all with a 20/2/10 Limited Warranty* that is one of the best in the business.	More than half of all remodeling firms have been in business less than four years.** Installation is rarely covered in the written warranty.