

HDC Application for work @ 14935 Westwood – Detroit, MI 48223

Lead Abatement Project for State of Michigan Lead Program

- Objective of project is to remediate / abatement / control lead hazards to save children in the home from lead poisoning.
 - Owner: Demaryst Garwood
 - 313-896-6008
- State Lead Abatement Contractor
 - CTI Contractor Services, LLC
 - State Firm Lic # C-00982
 - City Lic# LIC2020-00899



Front Livingroom

Exterior view of front side A

Livingroom windows

Current units are 40% upper & 60% lower
Double Hung type windows

Old Aluminum storm windows are present but
in poor and non-working condition

All windows are trimmed with aluminum coil
trim, white in color

Muntin bars on flankers & only upper on center

Front of home has aluminum soffit and siding
on front & partial sides. All soffit and fascia and
rake boards are already trimmed with aluminum
trim. They were subsequently painted with
lead-based paint on top of the aluminum trim
some time in the past history of paint work



Front Upper Bedroom

Front upper bedroom side A on the home,
but on left side

Current window unit is a 50/50 Double Hung

Muntins are standard colonial pattern

Old Aluminum storm windows are present
but in poor and non-working condition

All windows are trimmed with aluminum coil
trim, white in color

Shutters are to remain

Existing soffit & fascia and gutters are all
aluminum, but were painted over



Front Upper Bedroom

Front upper bedroom side A on the home,
but on right side

Current window unit is a 50/50 Double Hung

Muntins are standard colonial pattern

Old Aluminum storm windows are present
but in poor and non-working condition

All windows are trimmed with aluminum coil
trim, white in color

Shutters are to remain

Existing soffit & fascia and gutters are all
aluminum, but were painted over



Front Livingroom 2 / Familyroom area

Front lower livingroom / familyroom side A
on the home, but on right side

Current window unit is a 50/50 Double Hung

Muntins are standard colonial pattern

Old Aluminum storm windows are not
present only frame. Frame in poor and non-
working condition

All windows are trimmed with aluminum coil
trim, white in color

Shutters are to remain

Existing soffit & fascia and gutters are all
aluminum, but were painted over



Side B Upper Windows

Side B (left side) upper bedrooms side B on the home, but on left side

Current window unit is a 50/50 Double Hung

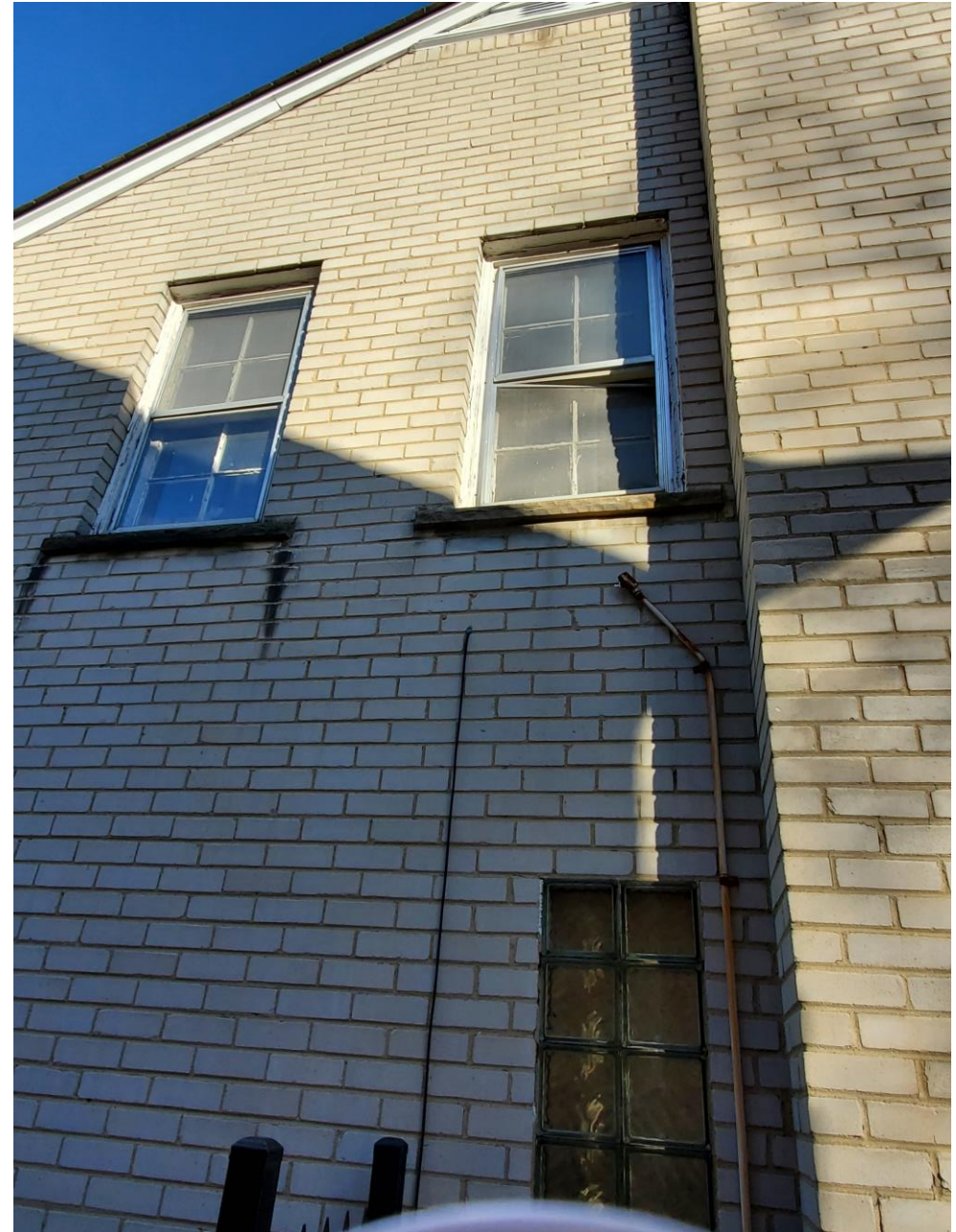
Muntins are standard colonial pattern

Old Aluminum storm windows are present but in poor and non-working condition

All windows are trimmed with aluminum coil trim, white in color

Existing rake edge and gable vent are all aluminum, but were painted over

> 1st floor windows in livingroom on side B are glass block



Side D Upper Stairwell

Side D (right side) upper stairwell window
side D on the home, but on right side

Current window unit is a 50/50 Double Hung

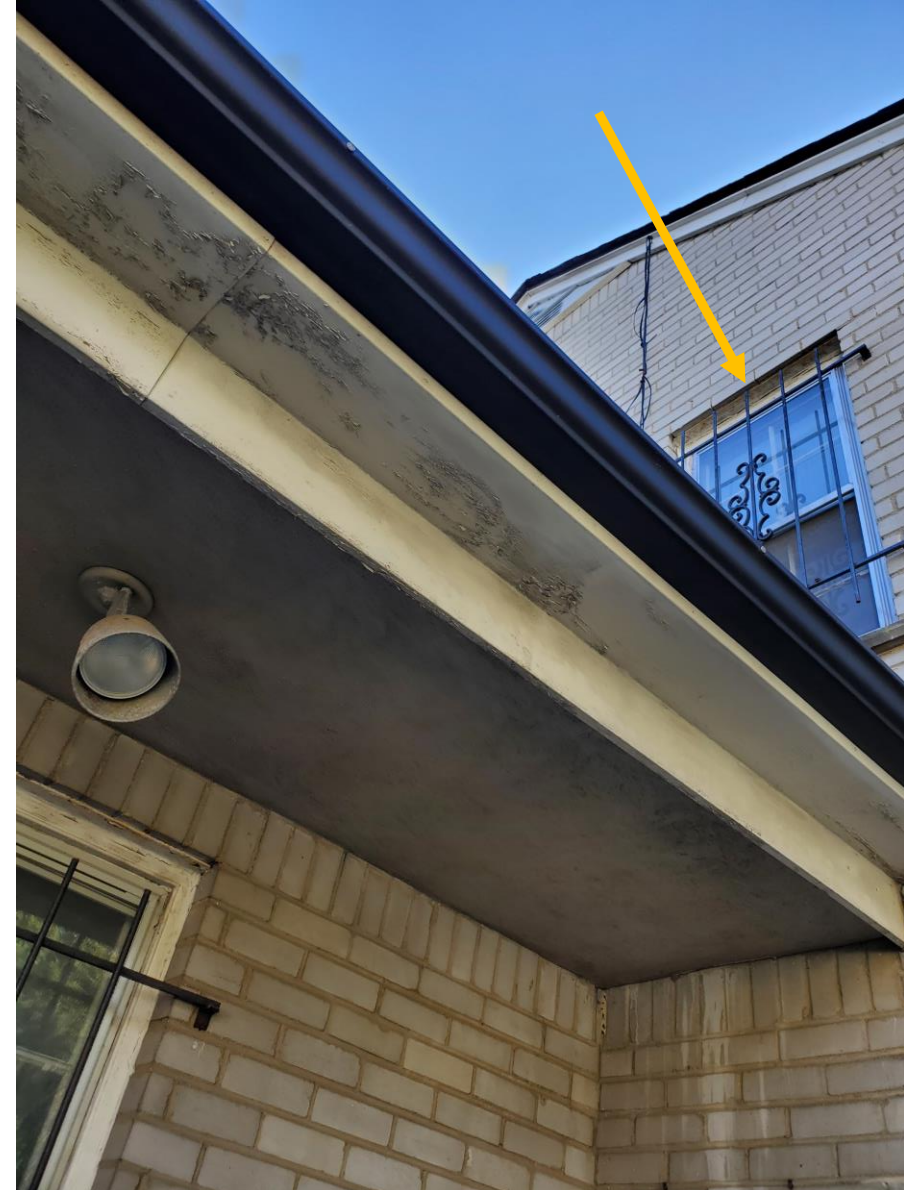
Muntins are standard colonial pattern

Old Aluminum storm windows are present
but in poor and non-working condition

All windows are trimmed with aluminum coil
trim, white in color

Windows bars would be removed

Existing rake edge and gable vent are all
aluminum, but were painted over



Side D Upper Bedroom

Side D (right side) upper front bedroom window side D on the home, but on right side

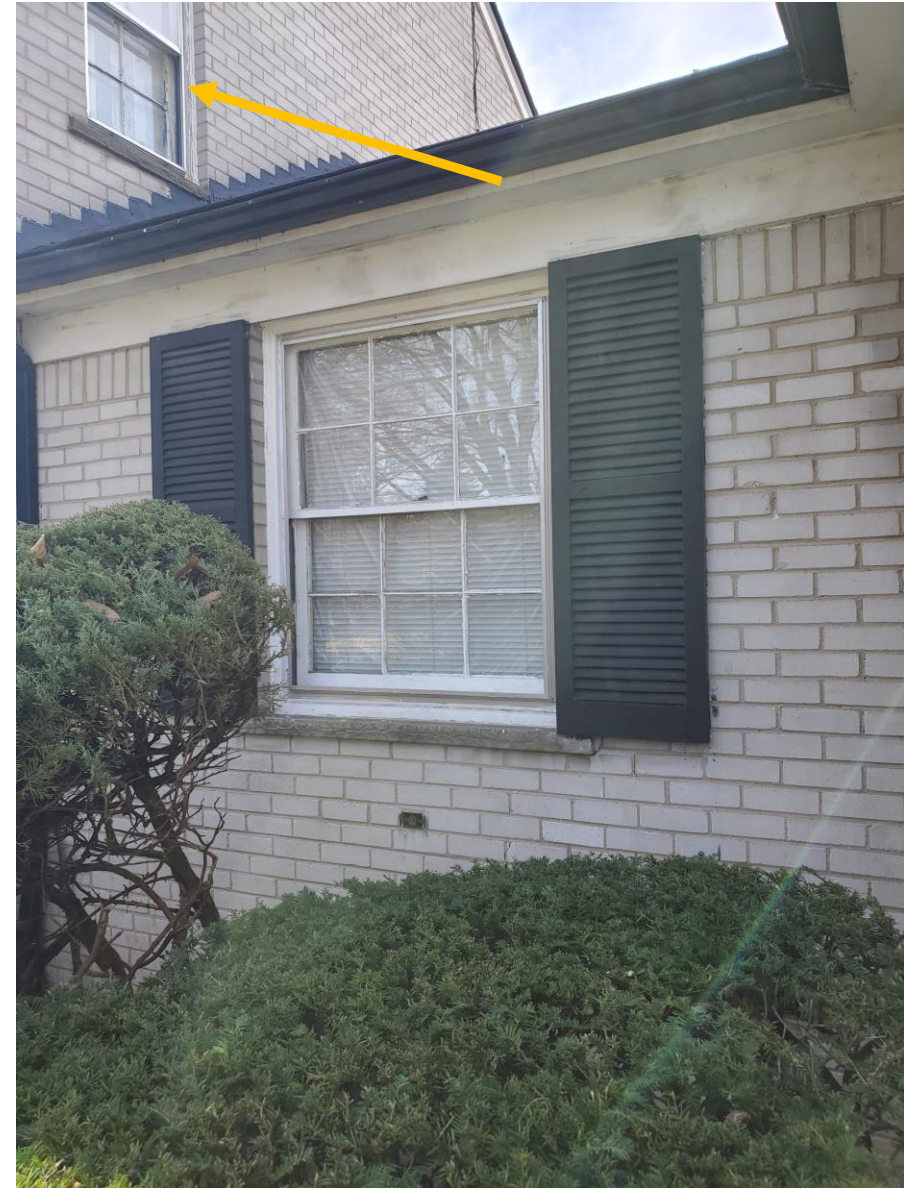
Current window unit is a 50/50 Double Hung

Muntins are standard colonial pattern

Old Aluminum storm windows are present but in poor and non-working condition. Only frame is existing

All windows are trimmed with aluminum coil trim, white in color

Existing rake edge and gable vent are all aluminum, but were painted over



Garage Windows

Garage Windows on Side D & C

Right Side of Home and Rear Side of Home

Both windows are currently and have been for many years a Glass Block type window

These units are not lead painted and will not be addressed as part of the Lead Abatement Project as SOW by the State.



Kitchen Window

Exterior view of Rear side C

Kitchen window

Current units are 40% upper & 60% lower
Double Hung type windows

Muntin bars only on upper section

Old Aluminum storm windows are present
but in poor and non-working condition

All windows are trimmed with aluminum coil
trim, white in color

Paint is flaking off areas where trim is missing

Window bars will be removed



1st Floor ½ Bathroom

Side D (right side) Lower bathroom window
side D on the home, but on right side

Current window unit is a 50/50 Double Hung

Muntins are standard colonial pattern,
missing as glass was changed. Lower glass is
obscure

Old Aluminum storm windows are present
but in poor and non-working condition

All windows are trimmed with aluminum coil
trim, white in color

Paint is flaking off areas where trim is missing

Window bars will be removed



Diningroom Windows

Exterior view of Rear side C

Diningroom windows, 2 units. View is inside the sun porch area

Current units are 50/50 Double Hung type windows

Muntin bars are standard colonial type

Old Aluminum storm windows are present but in poor and non-working condition. Only frame is existing

All windows are trimmed with aluminum coil trim, white in color

Paint is flaking off areas where trim is missing

Window bars will be removed



Upper Bedrooms

Exterior view of Rear side C

Upper Bedroom windows, 2 units. View is from rear and is 2 different bedrooms

Current units are 50/50 Double Hung type windows

Muntin bars are standard colonial type

Old Aluminum storm windows are present but in poor and non-working condition. Only frame is existing

All windows are trimmed with aluminum coil trim, white in color

Paint is flaking off areas where trim is missing

Window bars will be removed



Rear Livingroom 2 / Family room area

Rear lower livingroom / familyroom side C on the home, but on rear side

Current window unit is a 50/50 Double Hung

Muntins are standard colonial pattern

Old Aluminum storm windows are not present only frame. Frame in poor and non-working condition

All windows are trimmed with aluminum coil trim, white in color

Existing soffit & fascia and gutters are all aluminum, but were painted over



Front Entry Door

Side A – Front Entry Door

Door will remain and will be scraped & painted to maintain old existing wood unit to keep same style as built



14935 Westwood - Lead Hazards

- Livingroom Windows



Paint Chips &
Lead Dust.

High Levels of
Lead Dust
were found
and is
considered
Hazardous



14935 Westwood - Lead Hazards

- Old Wood Windows



Paint Chips &
Lead Dust.

High Levels of
Lead Dust
were found
and is
considered
Hazardous



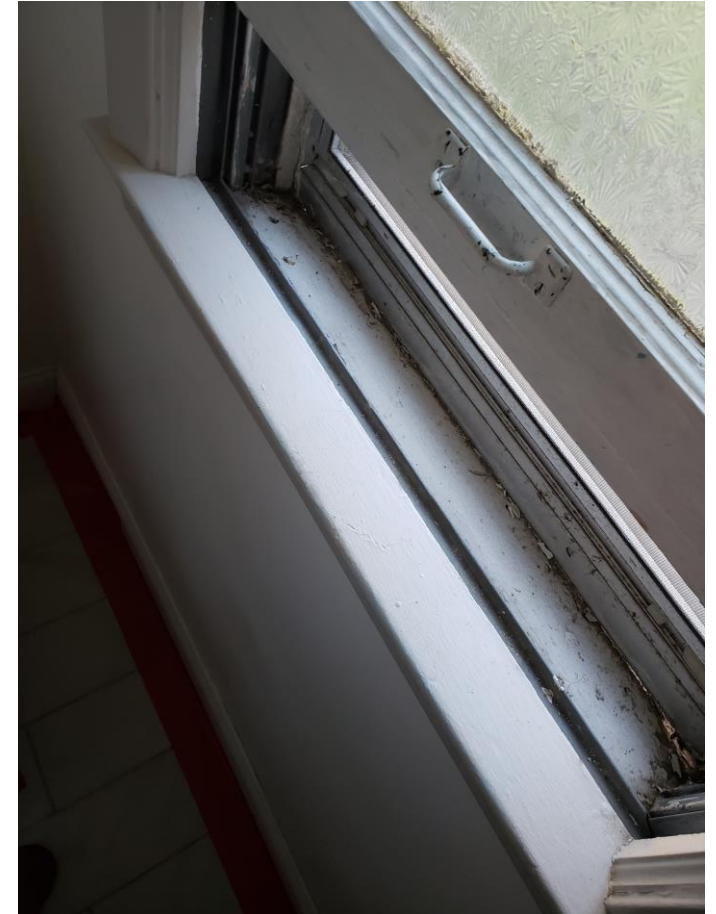
14935 Westwood - Lead Hazards

- Old Wood Windows



Paint Chips & Lead Dust.

High Levels of Lead Dust were found and is considered Hazardous



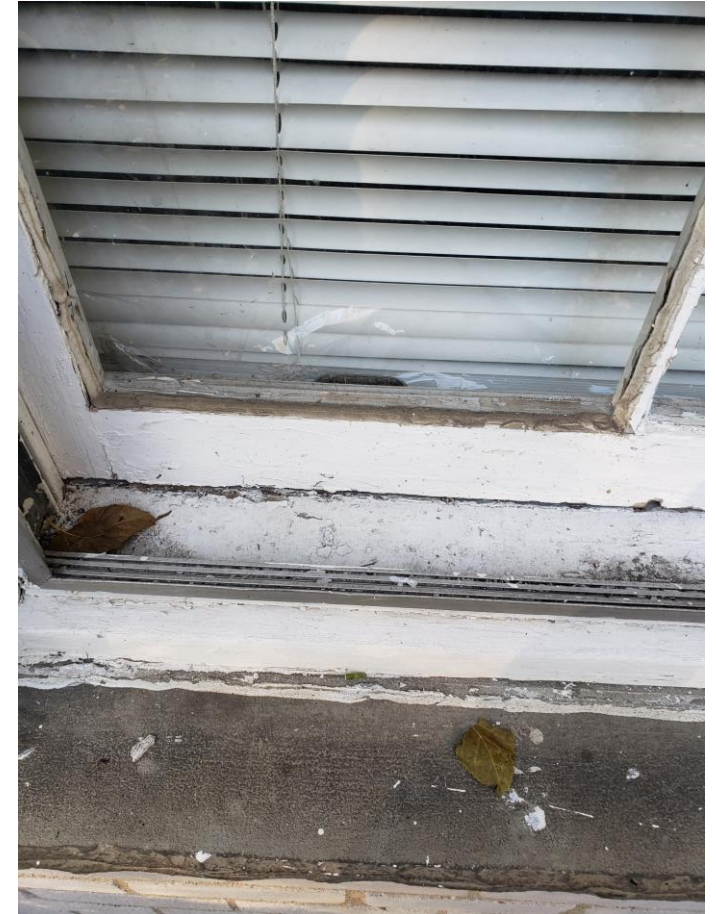
14935 Westwood - Lead Hazards

- Old Wood Windows



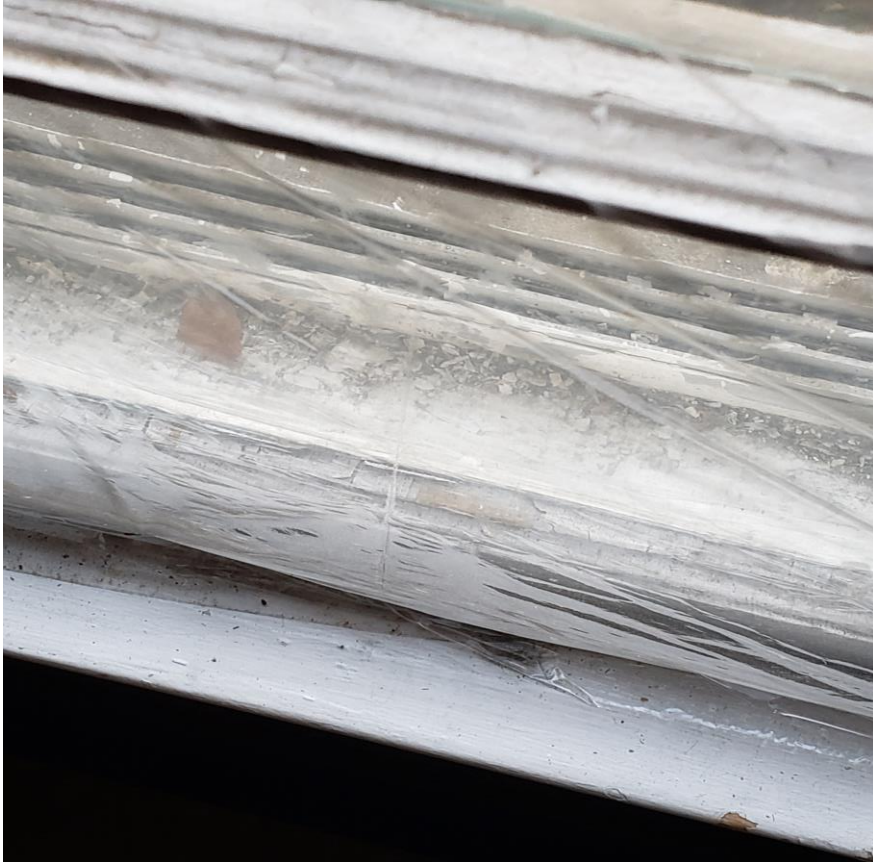
Paint Chips & Lead
Dust.

High Levels of Lead
Dust were found and
is considered
Hazardous



14935 Westwood - Lead Hazards

- Old Wood Windows



Paint Chips &
Lead Dust.

High Levels of
Lead Dust
were found
and is
considered
Hazardous



14935 Westwood - Lead Hazards

- Old Wood Windows



Paint Chips &
Lead Dust.

High Levels of
Lead Dust were
found and is
considered
Hazardous



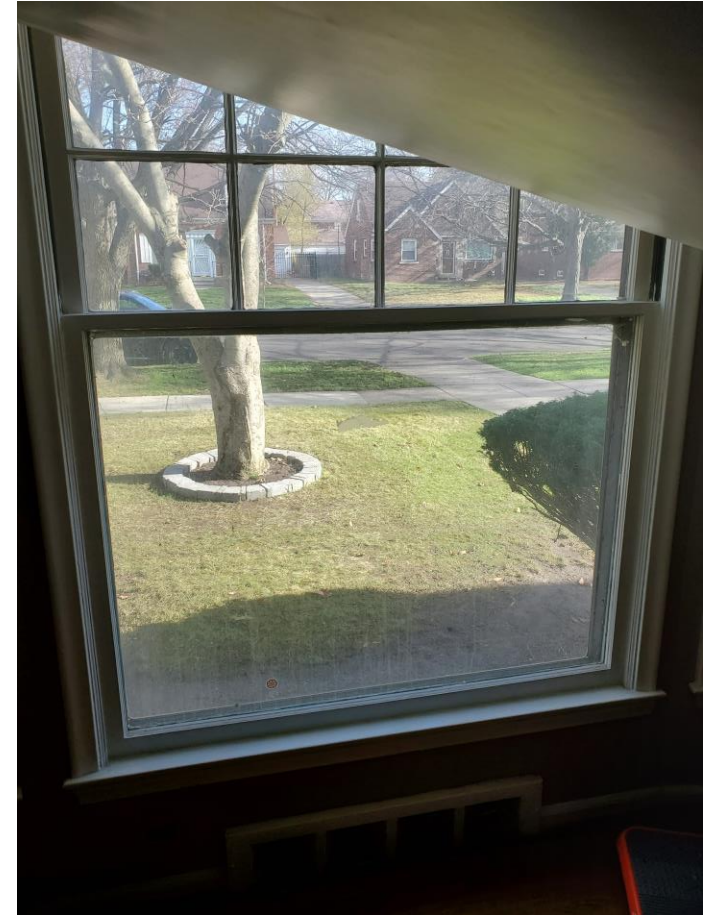
14935 Westwood – Detroit = Interior View



Front Livingroom windows

Center Double Hung unit
painted shut

Locks on other flanker
units do not work

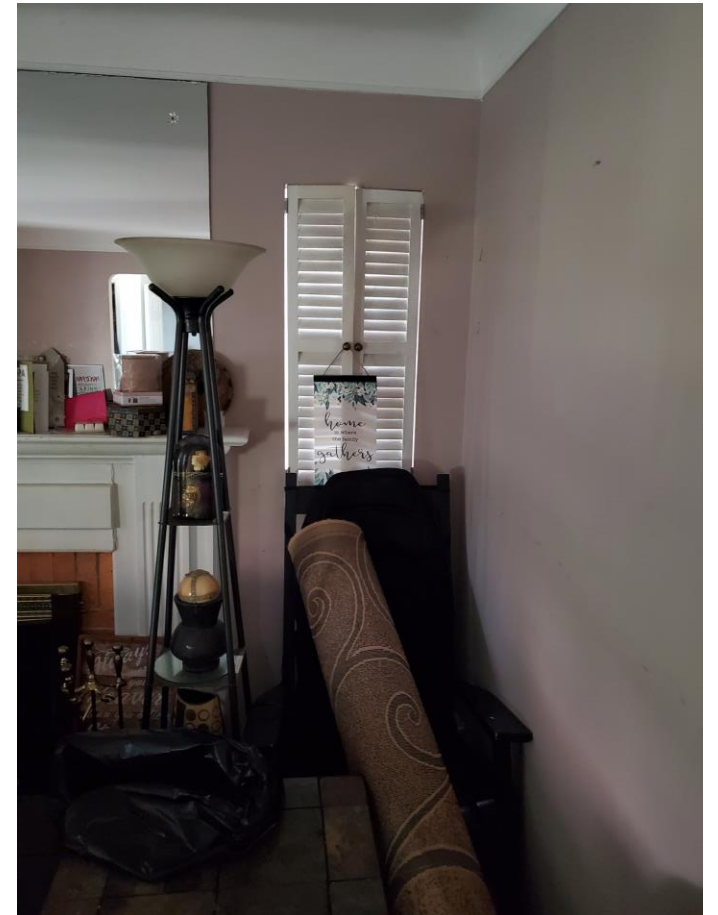


14935 Westwood – Detroit = Interior View



Side B Livingroom
windows – Left side

Glass Block windows



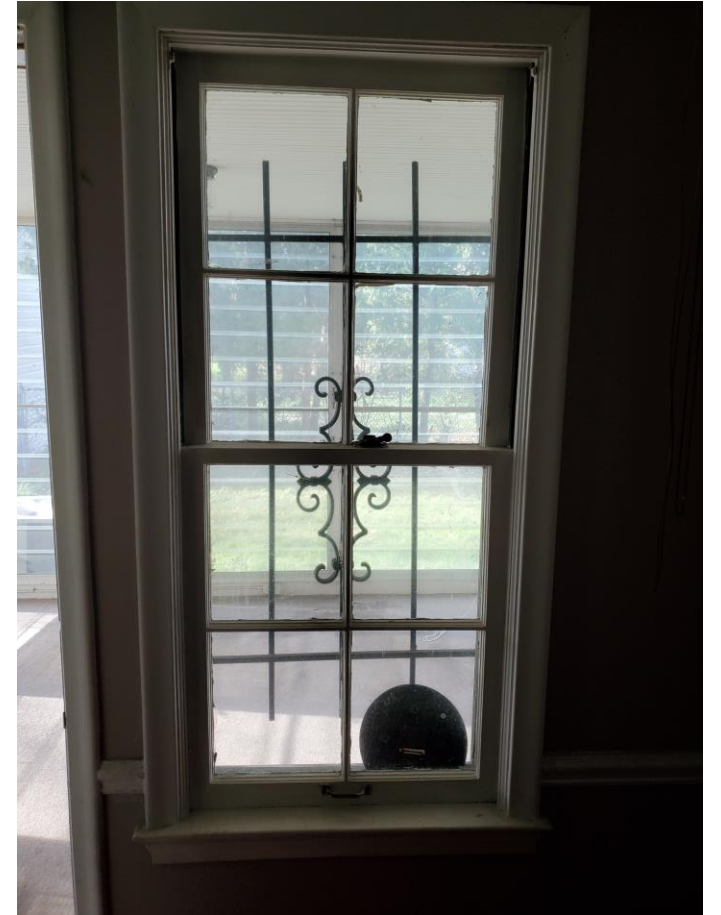
14935 Westwood – Detroit = Interior View



Dining room windows

painted shut

Locks on both units do not work



14935 Westwood – Detroit = Interior View



Rear Side C Kitchen window

Center Double Hung unit
painted shut

Locks on units do not work

Storm is missing pieces and
does not work



14935 Westwood – Detroit = Interior View



Side D ½ Bath window

Unit does not operate well

Locks on unit do not work

Glass panes have been
changed and muntin bars
removed



14935 Westwood – Detroit = Interior View

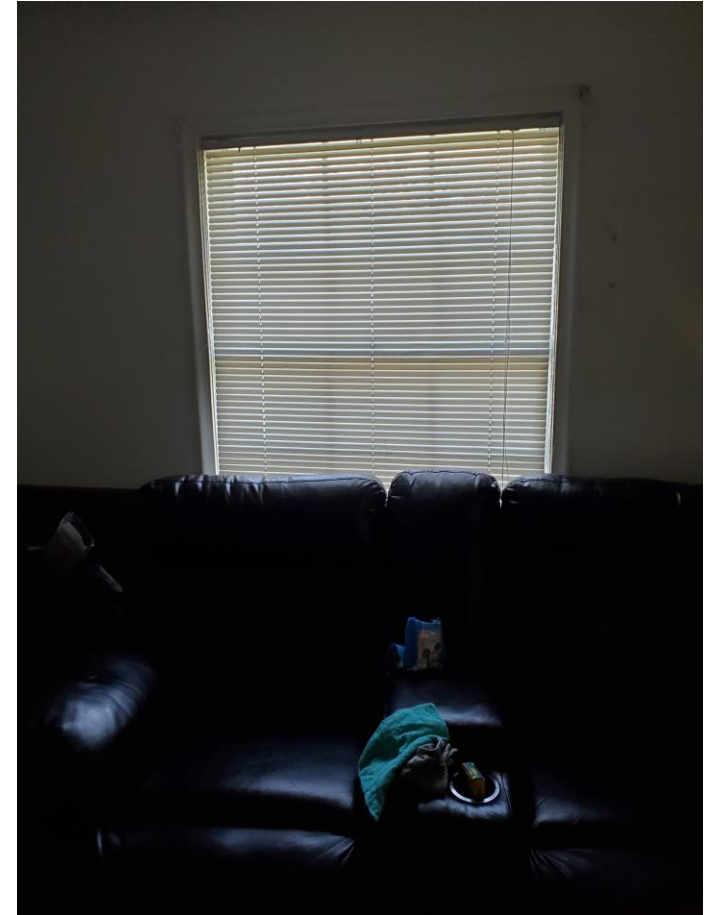


Living room 2 / Family
room windows – 2 Units

Units does not operate well

Locks on unit do not work

Storm windows are missing
panes and frame only



14935 Westwood – Detroit = Interior View

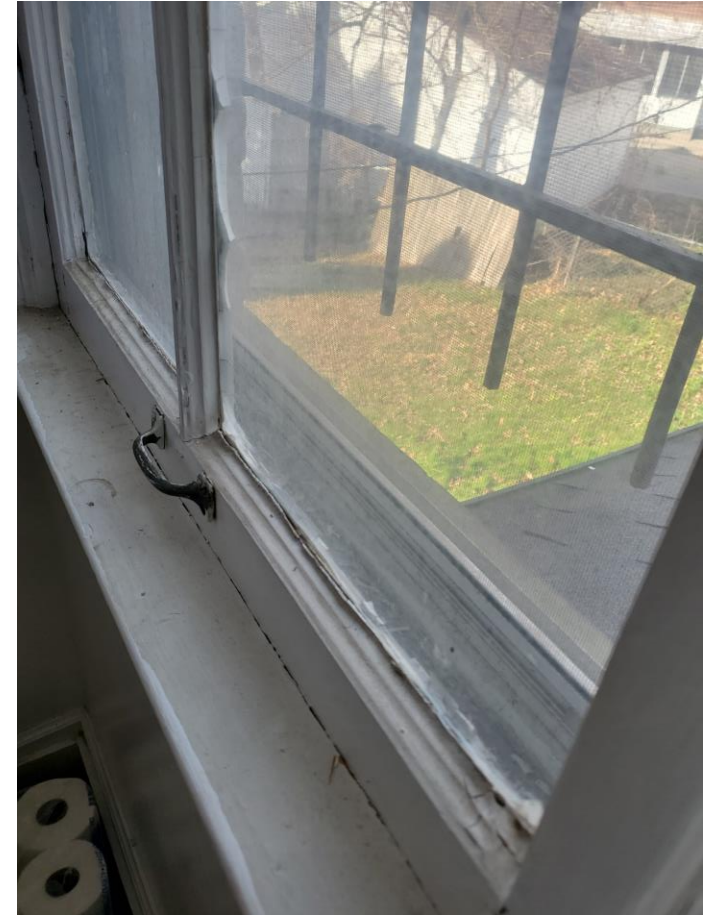


Side D Stairwell window

Unit does not operate well

Locks on unit do not work

Glass panes loose and
glazing bad



14935 Westwood – Detroit = Interior View

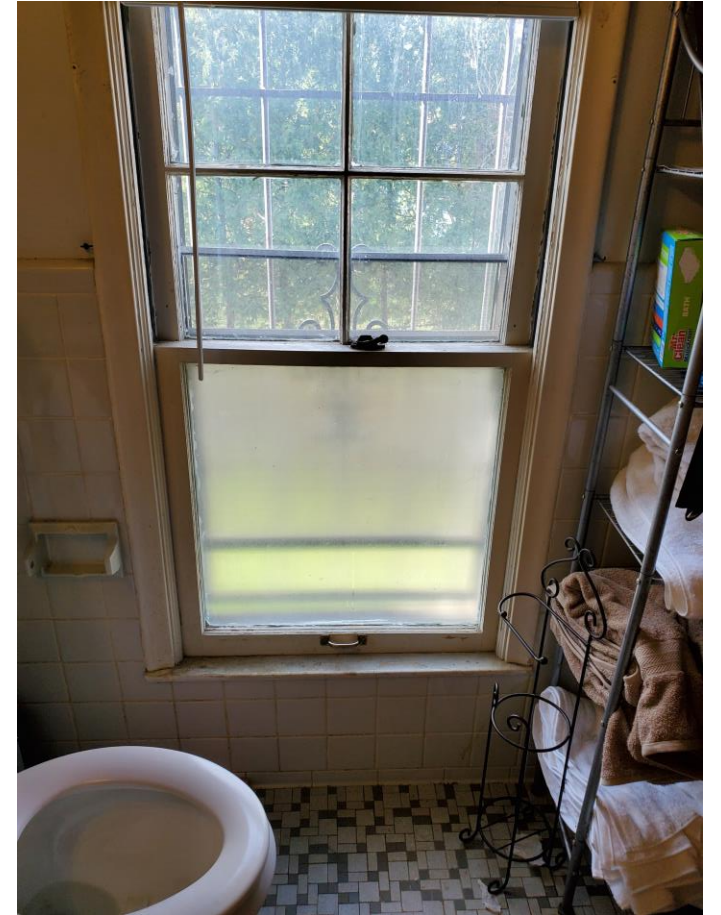


Side C Full Bath window

Unit does not operate well

Locks on unit do not work

Glass panes have been
changed and muntin bars
removed on lower unit



14935 Westwood – Detroit = Interior View



Side A & D Upper Bedroom
Window

Unit does not operate well

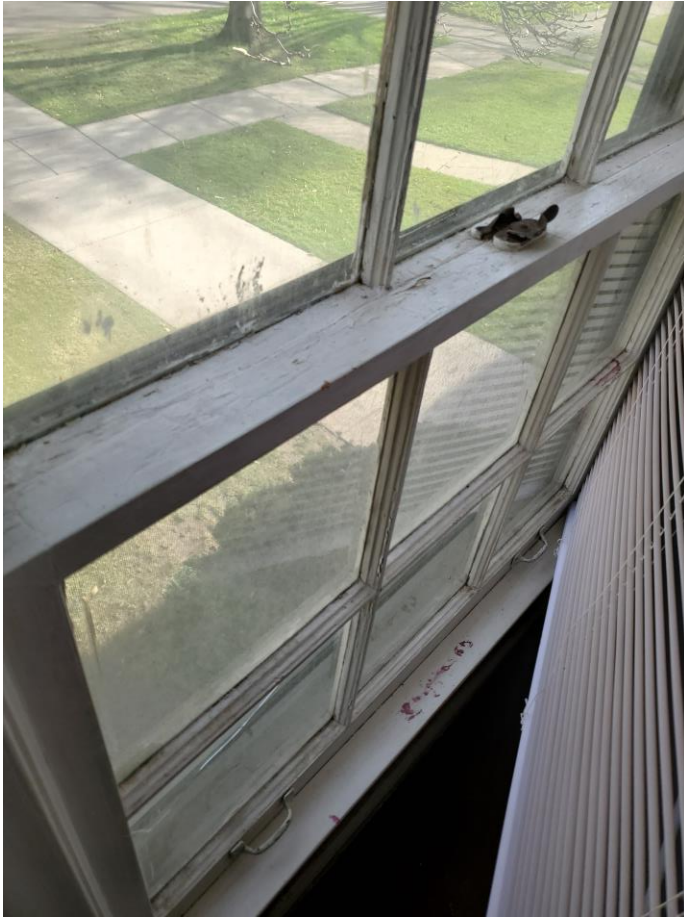
Locks on unit do not work

Glass are un poor condition

Storm windows are broken



14935 Westwood – Detroit = Interior View

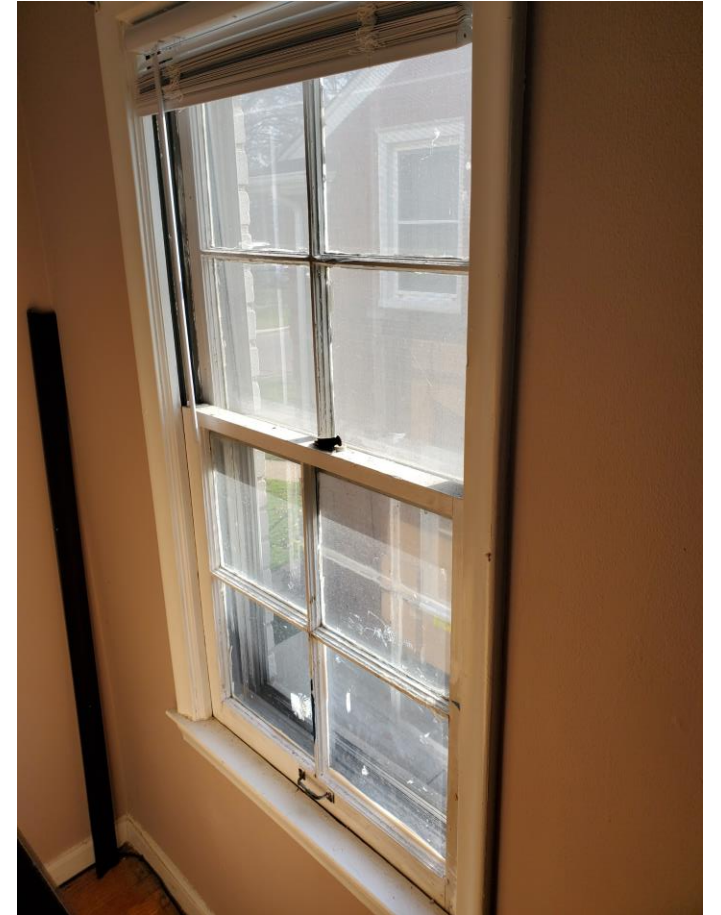


Side A & B Upper Bedroom windows

Unit does not operate well

Locks on unit do not work

Glass panes and glazing in poor condition



14935 Westwood – Detroit = Neighboring Homes on Street



- 14925 Westwood
- Neighbor to left of home
- Property has all vinyl replacement windows
- Property has all aluminum trim on fascia, rake, windows.

14935 Westwood – Detroit = Neighboring Homes on Street



- 14915 Westwood
- Neighbor to left of home
- Property has all vinyl replacement windows
- Property has all aluminum trim on fascia, rake, windows.
- Aluminum siding

14935 Westwood – Detroit = Neighboring Homes on Street



- 14922 Westwood
- Neighbor to left of home
- Property has all vinyl replacement windows
- Property has all aluminum trim on fascia, rake, windows.

14935 Westwood – Detroit = Neighboring Homes on Street



- 14940 Westwood
- Neighbor to left of home
- Property has all vinyl replacement windows
- Property has all aluminum trim on fascia, rake, windows.
- Vinyl Siding

14935 Westwood – Detroit = Neighboring Homes on Street



- 14950 Westwood
- Neighbor to left of home
- Property has all vinyl replacement windows
- Property has all aluminum trim on fascia, rake, windows.
- Vinyl Siding


14935 Westwood – Detroit = Neighboring Homes on Street

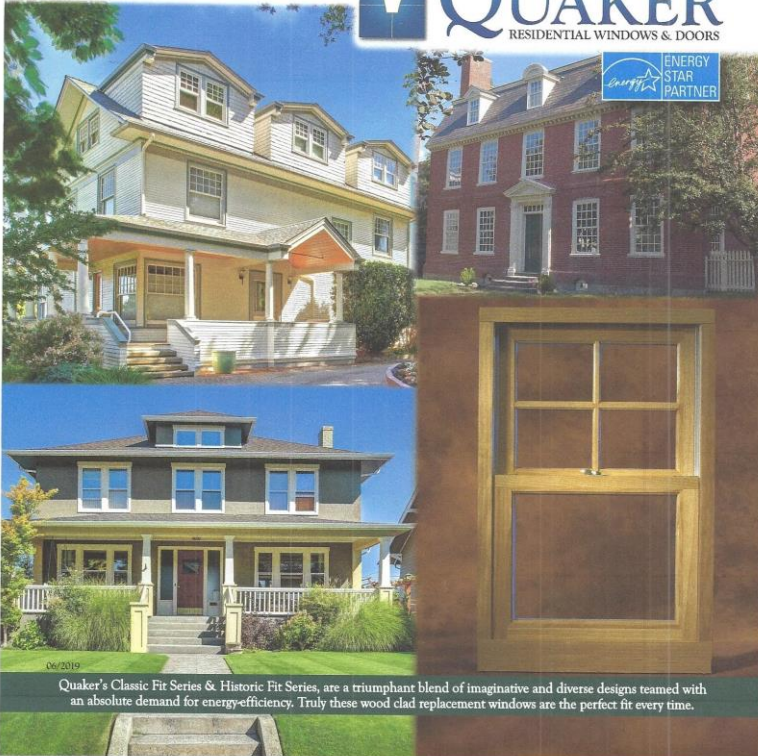


- 14960 Westwood
- Neighbor to left of home
- Property has all vinyl replacement windows
- Property has all aluminum trim on fascia, rake, windows.
- Vinyl Siding

14935 Westwood – Detroit = Proposed New Windows – QUAKER Windows

REPLACING YOUR OLD WOOD WINDOWS WITH NEW WOOD WINDOWS IS NO LONGER OUT OF THE QUESTION.

ClassicFit SERIES *HistoricFit* SERIES
Wood Clad Replacements Windows by  **QUAKER**
RESIDENTIAL WINDOWS & DOORS



The advertisement features three photographs of houses: a white house with a porch, a red brick house, and a grey house with a porch. A large image of a wood-clad window unit is shown in the foreground. An ENERGY STAR PARTNER logo is visible on the red brick house.

06/2019
Quaker's Classic Fit Series & Historic Fit Series, are a triumphant blend of imaginative and diverse designs teamed with an absolute demand for energy-efficiency. Truly these wood clad replacement windows are the perfect fit every time.

- Quaker Windows Systems
- Historic Fit Units
- Residential Windows
- Factory Powder-Coat Painted window exterior
- Lay On Glass Wood Muntin Bars for matching look of existing.
- Low-E & Argon gas filled sealed glass. Low film Low-e to match existing clear glass.

14935 Westwood – Detroit = Proposed New Windows – QUAKER Windows



FEATURES AND OPTIONS

Aluminum clad exterior is essentially maintenance free and available in 33 "Quick-Pick" colors. Got a special exterior color in mind? Get any color in the spectrum with our custom color capabilities.

Warm, natural interior is courtesy of radiata pine wood. Alder wood is optional. Ask about custom pre-finished painted interiors in any color. Also available: Primed interior ready-to-paint.

Insulated glass sustains a year-round barrier. Add one of our optional energy-efficient glazing packages to increase your window's overall effectiveness. For your home's private areas, ask for obscure glass. Include Tapered Glass where additional safety is required.

Operation is simple and convenient with smooth operating cam locks and one-touch tilt latches.

Tailor your windows with grids. Between-the-Glass, Applied for a Simulated Divided look or Renewable Wood grids are all available.

Our Better-View™ fiberglass mesh screen is as good as any on the market. Superior insect protection. Excellent airflow. Great visibility.

Double Hung, Single Hung and Picture Window models. Also ask about Quaker's full line of matching wood clad patio doors.

For 70 years, we've promised to stand behind our products with one of the best warranties in the industry. Consult your dealer for complete warranty details.

Thermal Values	Hung Models	Picture Window Model
U-Value	0.27-0.32*	0.24-0.29*
Solar Heat Gain	0.12-0.43*	0.13-0.48*

*Thermal values are on a range which being a variety of Quaker's lines and optional glass packages. The addition of optional glazing packages may affect these values. Ask your dealer for details on the full Quaker® glazing packages and the more here.

What's The Quaker Difference?

It's an attention to detail and manufacturing excellence that distinguishes Quaker from all other window and door companies in America.

It's found in the build of our windows where you'll find 40% more wood, 33% thicker glass, and aluminum that's 4 to 6 times thicker than some other popular brands.

It's represented by a standard of quality, engineering, craftsmanship and innovation embedded in every product we manufacture.

It's providing you with the right solution to your project, not just selling you windows and doors.

That's the Quaker Difference.

ClassicFit. HistoricFit.

QUAKER
RESIDENTIAL WINDOWS & DOORS

www.quakerwindows.com

Get more information on Classic Fit and Historic Fit wood clad replacement windows from your authorized Quaker Window dealer.

Facebook, Pinterest, YouTube, Instagram, Twitter, LinkedIn, USA

- Quaker Windows Systems
- Historic Fit Units
- Residential Windows
- Unfinished wood on interior - can be stained or painted
- Lay On Glass Wood Muntin Bars for matching look of existing.
- Interior trim can be saved in some circumstances, but new can be installed to match.

Lead Safe Work for Abatement of Existing Windows

CTI Contractor Services, LLC is:

- State of Michigan Licensed Builder
- State of Michigan Licensed Lead Abatement Firm
- US EPA RRP Firm
- State of Michigan Asbestos Abatement Firm
- City of Detroit Licensed Contractor



**Construction Mgmt.
Builder
General Contractor**

248.698.6900

www.CTI-Services.net

All Work will be performed to meet HUD, EPA, & State Lead Abatement Standards to make the home “Lead Safe” for the children in the home.