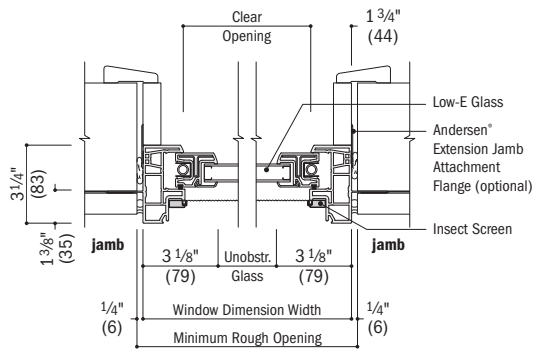


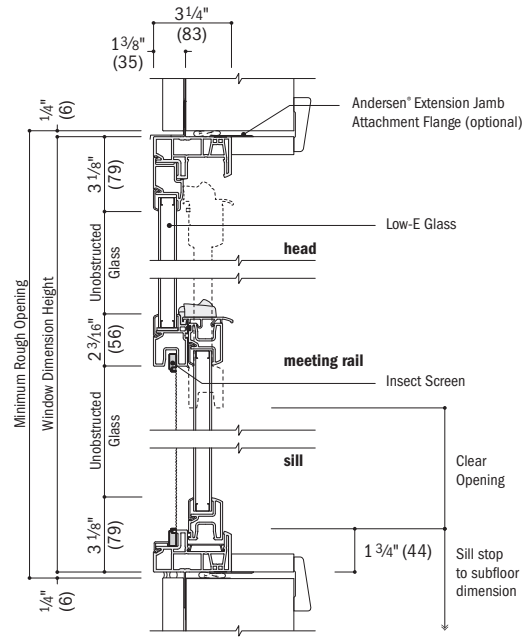
## Single-Hung Window Details – New Construction

Scale 1 1/2" (38) = 1'-0" (305) – 1:8

1 3/8" flange setback

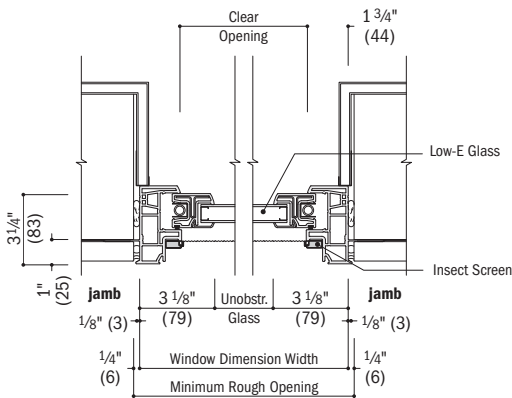


**Horizontal Section**

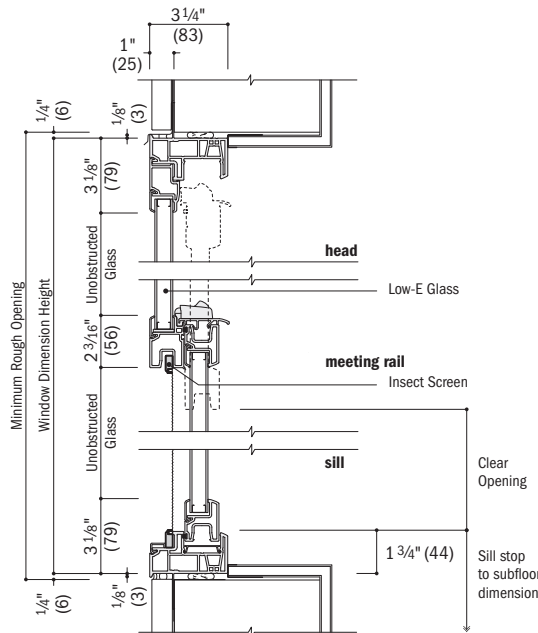


**Vertical Section**

1" flange setback with stucco key

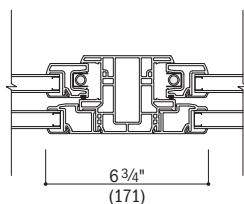


**Horizontal Section**  
stucco exterior

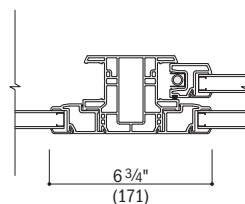


**Vertical Section**  
stucco exterior

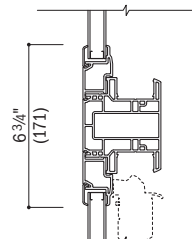
integrals



**Horizontal Section**  
Twin or Triple Single-Hung



**Horizontal Section**  
Picture with Flanking Single-Hung



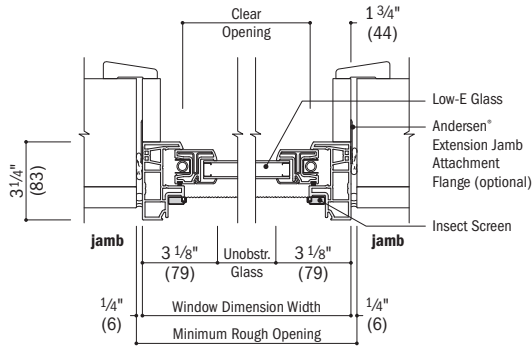
**Vertical Section**  
Transom over Single-Hung

- Drip cap is required to complete window installation as shown, but may not be included with the window. Use of drip cap is recommended for proper installation.
- Light-colored areas are parts included with window. Dark-colored areas are additional Andersen® parts required to complete window assembly as shown.
- **Rough openings may need to be increased to allow for use of building wraps, flashing, sill panning, brackets, fasteners or other items.**
- Details are for illustration only and are not intended to represent product installation methods or materials. Refer to product installation guides at [andersenwindows.com](http://andersenwindows.com).
- Dimensions in parentheses are in millimeters.

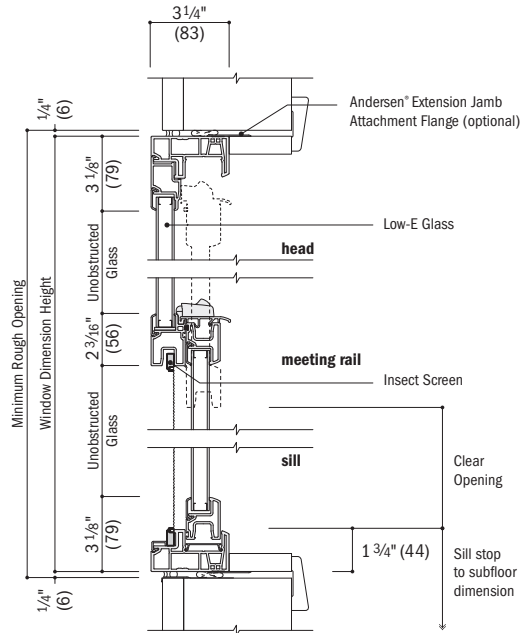
## Single-Hung Window Details – Replacement

Scale 1 1/2" (38) = 1'-0" (305) – 1:8

no flange

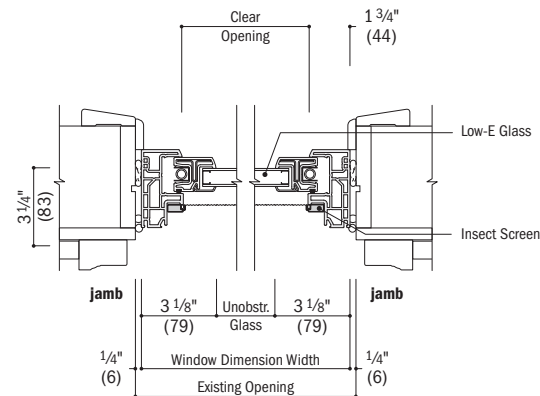


**Horizontal Section**  
existing framed opening

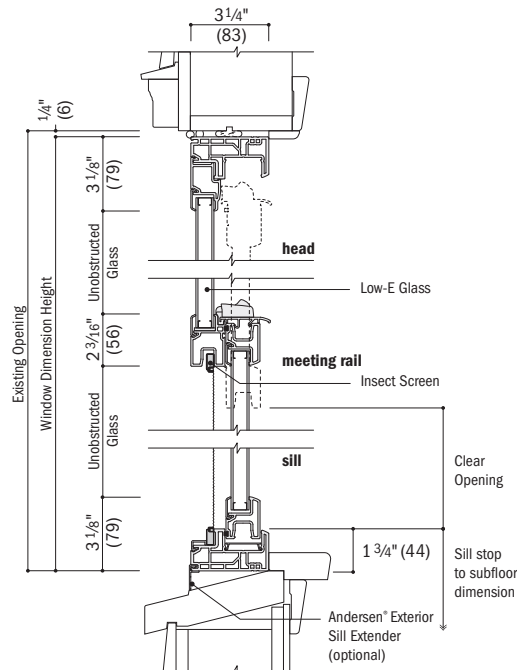


**Vertical Section**  
existing framed opening

insert

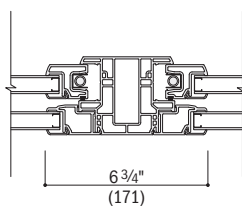


**Horizontal Section**  
existing window opening

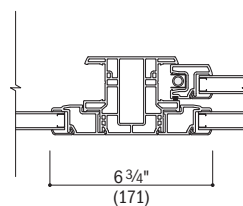


**Vertical Section**  
existing window opening

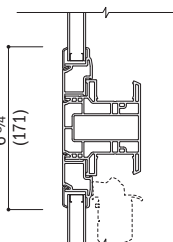
integrals



**Horizontal Section**  
Twin or Triple Single-Hung



**Horizontal Section**  
Picture with Flanking Single-Hung



**Vertical Section**  
Transom over Single-Hung

- Drip cap is required to complete window installation as shown, but may not be included with the window. Use of drip cap is recommended for proper installation.
- Light-colored areas are parts included with window. Dark-colored areas are additional Andersen® parts required to complete window assembly as shown.
- **Rough openings may need to be increased to allow for use of building wraps, flashing, sill panning, brackets, fasteners or other items.**
- Details are for illustration only and are not intended to represent product installation methods or materials. Refer to product installation guides at [andersenwindows.com](http://andersenwindows.com).
- Dimensions in parentheses are in millimeters.

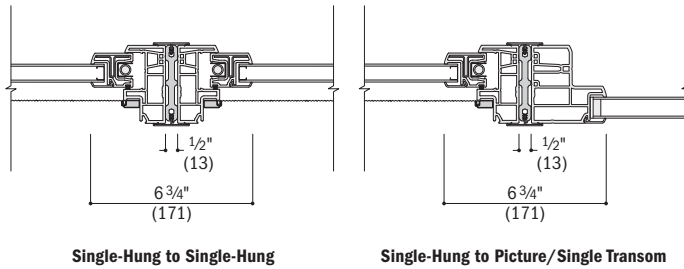
## Vertical (ribbon) Fiberglass Joining Details – Non-Reinforced

Scale 1½" (38) = 1'-0" (305) – 1:8

**Overall Window Dimension Width** Sum of individual window widths plus ½" (13) per join.

**Overall Minimum Rough Opening Width** Overall window dimension width plus ¾" (19).

The addition of joining materials will affect the overall rough opening dimension.



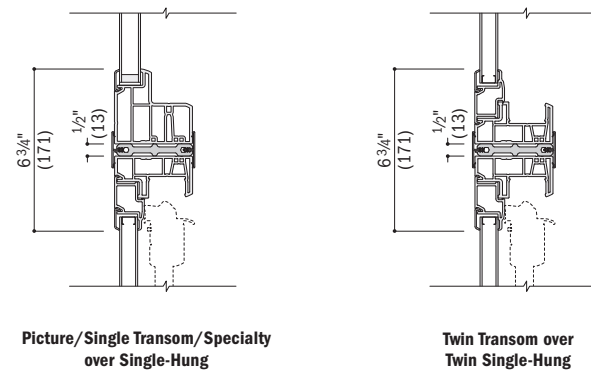
## Horizontal (stack) Fiberglass Joining Details – Non-Reinforced

Scale 1½" (38) = 1'-0" (305) – 1:8

**Overall Window Dimension Width** Sum of individual window widths plus ½" (13) per join.

**Overall Minimum Rough Opening Width** Overall window dimension width plus ¾" (19).

The addition of joining materials will affect the overall rough opening dimension.



- Rough openings may need to be increased to allow for use of building wraps, flashing, sill panning, brackets, fasteners or other items.
- Details are for illustration only and are not intended to represent product installation methods or materials. Refer to product installation guides at [andersenwindows.com](http://andersenwindows.com).
- Structural performance of any combination is only as high as the lowest structural performance of any individual window or join in the combination.
- Dimensions in parentheses are in millimeters.

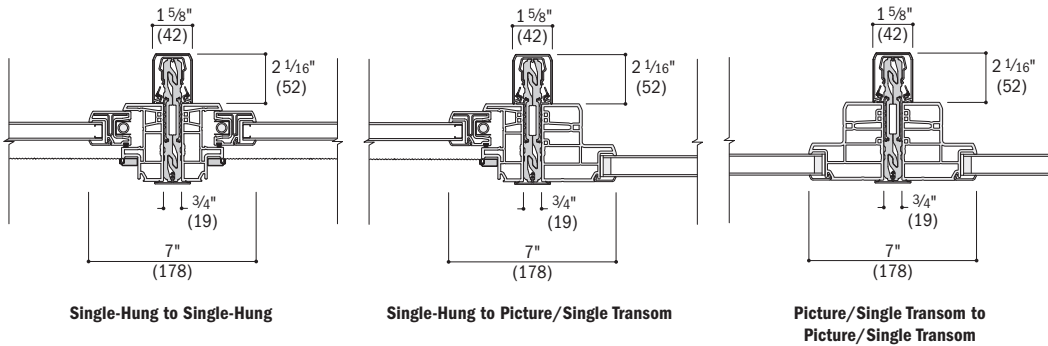
## Vertical (ribbon) Fiberglass Joining Details – Reinforced

Scale 1 1/2" (38) = 1'-0" (305) – 1:8

**Overall Window Dimension Width** Sum of individual window widths plus 3/4" (19) per join.

**Overall Minimum Rough Opening Width** Overall window dimension width plus 3/4" (19).

The addition of joining materials will affect the overall rough opening dimension.



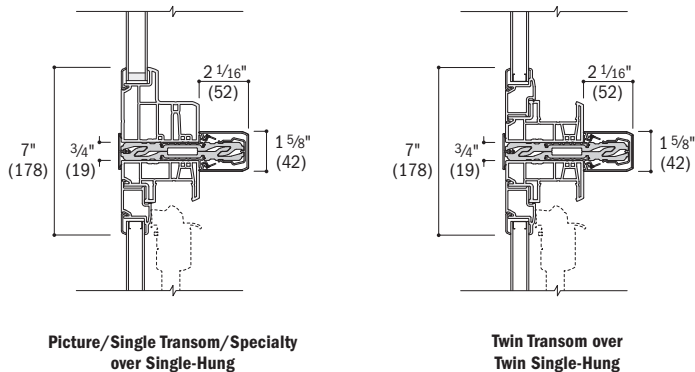
## Horizontal (stack) Fiberglass Joining Details – Reinforced

Scale 1 1/2" (38) = 1'-0" (305) – 1:8

**Overall Window Dimension Width** Sum of individual window widths plus 3/4" (19) per join.

**Overall Minimum Rough Opening Width** Overall window dimension width plus 3/4" (19).

The addition of joining materials will affect the overall rough opening dimension.



- Rough openings may need to be increased to allow for use of building wraps, flashing, sill panning, brackets, fasteners or other items.
- Details are for illustration only and are not intended to represent product installation methods or materials. Refer to product installation guides at [andersenwindows.com](http://andersenwindows.com).
- Structural performance of any combination is only as high as the lowest structural performance of any individual window or join in the combination.
- Dimensions in parentheses are in millimeters.