



447 Henry- Steel Factory sash behind CMU infill- examine after CMU removed.



427 Henry- Window #1, some minor deterioration



Wind #2-



Wind #3- mostly missing



Wind #4



Wind #5- mostly missing



Wind #6- mostly missing



Wind #7- mostly missing



Wind #8- badly damaged



Wind #9- 1<sup>st</sup> floor of light well



Wind #10- Upper light well



Wind #11- light well window



Wind #12- west diagonal muntin window



Wind #13- partially covered



Wind #13a- deterioration detail



Wind #14-



Wind #14a- damage detail



Wind #15- partially covered



Wind #16- partially covered



Wind #17- east bay 2<sup>nd</sup> floor



Wind #17a- some sill rail damage



Wind #17b- left jamb



Wind #18- jamb stile damage



Wind #19- disassembling



Wind #20- disassembling



Wind #21



Wind #22- mostly missing



Wind #23- partially covered



ind #24



Wind #25a- upper sash saggi





Wind #26- 2<sup>nd</sup> east light well window



Wind #27-northeast lightwell



Wind #27- upper sash disassembling



Wind #28-intact west 2<sup>nd</sup> floor bay



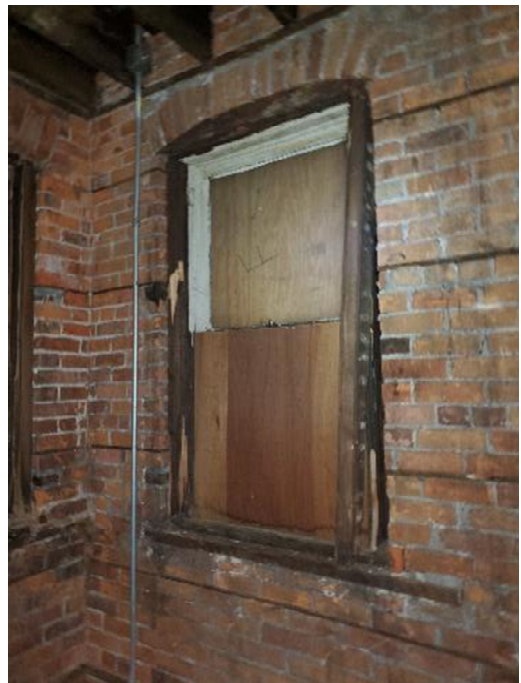
Wind #29- partially covered



Wind #30- partially covered



Wind #31- west bay, right replacement window



Wind #32- partially covered



Wind #33-



Wind #34



Wind #35- partially missing



Wind #36-east 3<sup>rd</sup> flr vinyl windows



Wind #37 & 38- vinyl



Winds 39, 40, 41- vinyl



Winds 42, 43- vinyl



Winds 44 vinyl



Winds 45, 46- 3<sup>rd</sup> lightwell east



Wind #47- vinyl



Wind #48- vinyl



Winds 49, 50 vinyl



Wind #51 vinyl



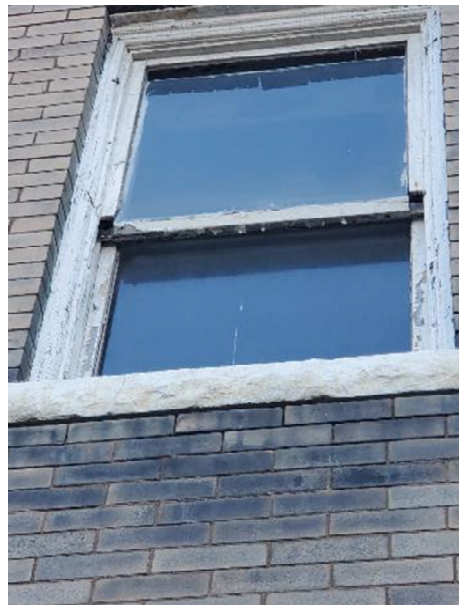
Winds 52, 53 Vinyl



Wind 54 vinyl



Winds 55, 56 west lightwell vinyl



Wind #27- exterior showing upper sash detach