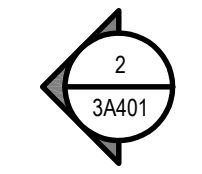
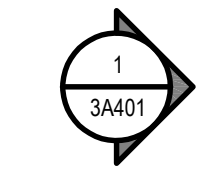
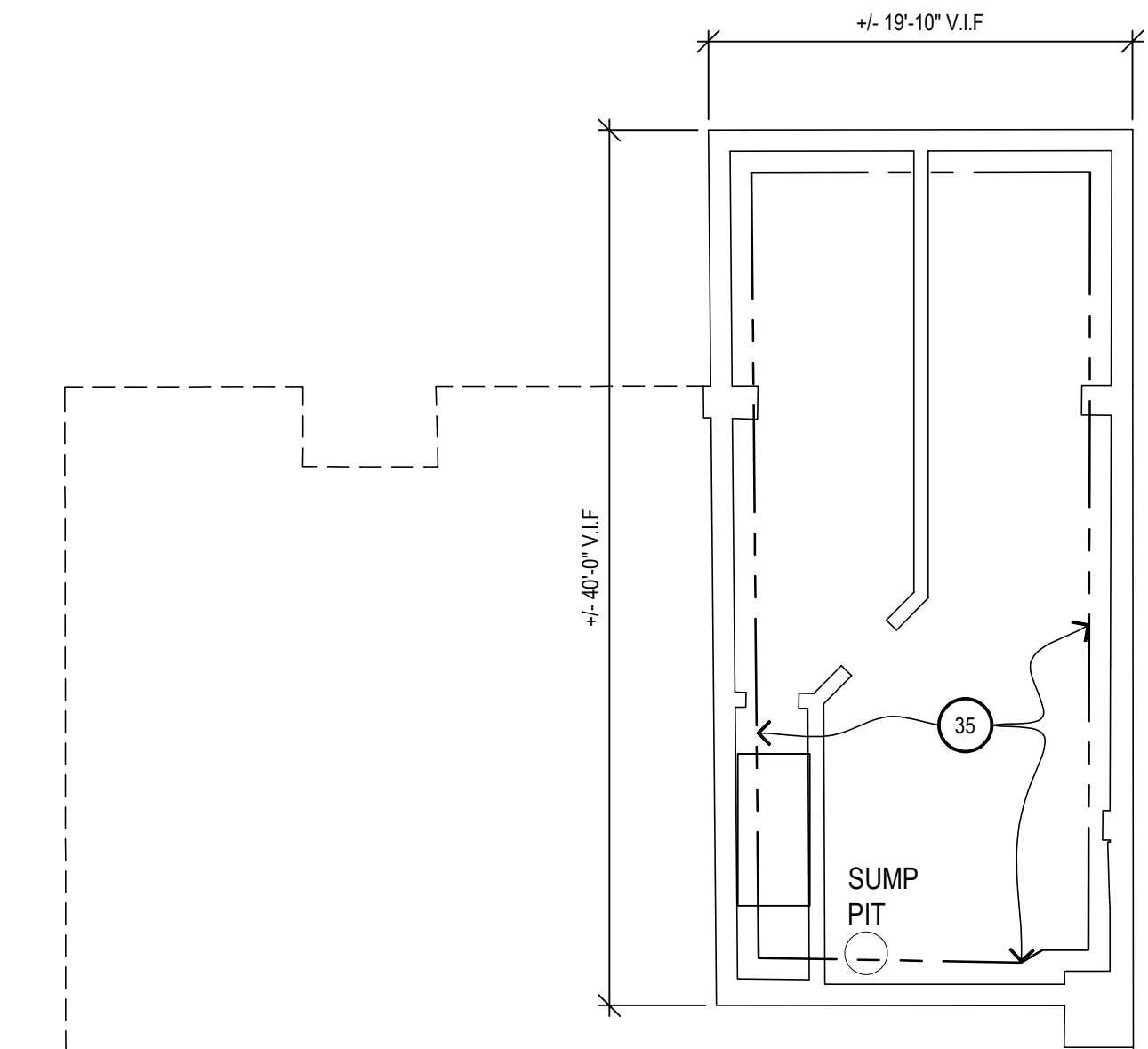
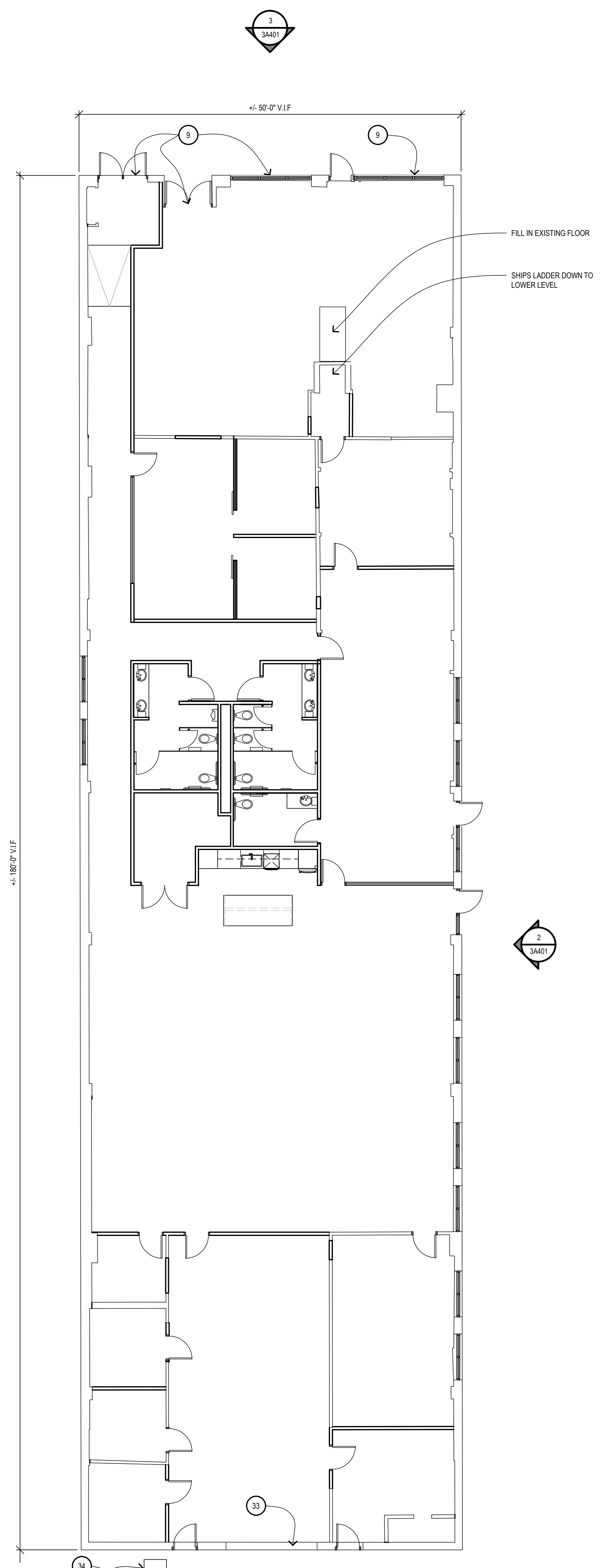
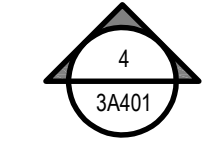


KEYNOTES:

- 1 RECONSTRUCTED DOUBLE WOOD/GLASS DOORS
- 2 NEW METAL RAILING, PAINTED
- 3 NEW METAL HAND/GUARD RAIL AT EXTERIOR STAIR, PAINTED
- 4 NEW METAL HAND/GUARD RAIL AT EXTERIOR STAIR, PAINTED
- 5 RECONSTRUCTED CONCRETE PORCH LANDING
- 6 RECONSTRUCTED CONCRETE STEPS
- 7 RECONSTRUCTED MASONRY STAIRWELL RETAINING WALL W/ LIMESTONE CAPS
- 8 RECONSTRUCTED CONCRETE STEPS & REPLACEMENT METAL HANDRAILS (PAINTED)
- 9 NEW INSULATED PRE-FINISHED ALUM ENTRANCE/ STOREFRONT SYSTEM
- 10 NEW WINDOW UNIT W/ INSULATED GLASS
- 11 NEW METAL GUARD RAIL SYSTEM AT BALCONY
- 12 RECONSTRUCTED WOOD BALCONY W/ SYNTHETIC DECKING/TRIM
- 13 RECONSTRUCTED MASONRY PORCH KNEE WALL AND ASSOCIATED REINFORCED CONCRETE FOOTING
- 14 RECONSTRUCTED STONE PORCH, STEPS, ASSOCIATED REINFORCED CONCRETE FOOTINGS & METAL HANDRAILS (PAINTED)
- 15 RECONSTRUCTED EXTERIOR STAIR SYSTEM: FRAMING, LANDINGS, STAIRS, RAILS, GUARDRAILS HISTORICALLY APPROPRIATE
- 16 RECONSTRUCTED FLOOR ASSEMBLY
- 17 RECONSTRUCTED STAIRS, LANDINGS, RAIL/GUARD RAIL SYSTEM W/ HISTORICALLY APPROPRIATE MATERIALS/ FINISHES
- 18 RECONFIGURED ELEVATOR HOIST WAY WITH NEW ELEVATOR (RAILS, PIT) & RECONFIGURED FLOOR FRAMING TO ACCEPT NEW FLOOR OPENING
- 19 EXISTING LIGHT WELL WITH NEW 2 HR RATED SHAFT WALL ASSEMBLY INNER LINING, PROVIDE RATED GLAZING AT EXISTING OPENINGS
- 20 EXISTING MASONRY FIREPLACE
- 21 NEW ADA COMPLIANT LIFT, PROVIDE POWER
- 22 NEW SINGLE PLY ROOF MEMBRANE ON MIN R-30 INSULATION
- 23 PROVIDE NEW SHEATHING AT VERTICAL PORTION OF PARAPET FOR NEW ROOFING
- 24 NEW SKYLIGHT WITH INTEGRAL CURB
- 25 PROVIDE NEW SINGLE PLY ROOF/ FLASHING AT PROJECTED BAY WINDOWS/ PORCH ROOFS
- 26 PROVIDE NEW GUTTERS/ DOWNSPOUTS
- 27 PROVIDE NEW FLASHING AT ROOF/ STAIR ENCLOSURE
- 28 MECHANICAL UNITS ON PREFABRICATED EQUIPMENT CURBS
- 29 PREFINISHED GALV METAL METAL ROOF SCREEN, 5'-0" HIGH, 12" ABOVE ROOF. PROVIDE GALV SUPPORTS AT 6'-0" O.C., PROVIDE BLOCKING AT EXISTING ROOF STRUCTURE TO ACCOMMODATE.
- 30 NEW MECHANICAL SHAFT
- 31 EXISTING STAIR CONSTRUCTION TO REMAIN, EXISTING RAILS TO REMAIN, PAINT
- 32 NEW MECHANICAL ROOF PENETRATION, PROVIDE INSULATED CURBS WITH INTEGRAL FLASHING
- 33 NEW INSULATED OVERHEAD DOOR
- 34 EXISTING DTE PEDESTAL
- 35 PROVIDE WATERPROOFING AT BASEMENT FOUNDATION WALLS
- 36 NEW ELEVATOR OVER RUN ENCLOSURE, INSULATED METAL SIDING ON COLD FORM FRAMING



GROSS AREA: 8,794 SF



2
3A101
1/8" = 1'-0"

447 HENRY GROUND

PROJECT NORTH



1
3A101
1/8" = 1'-0"

447 HENRY BASEMENT

PROJECT NORTH



NEW WORK LEGEND:	
	EXISTING WALL TO REMAIN
	NEW WALL CONSTRUCTION
	EXISTING DOOR AND FRAME TO REMAIN
	NEW DOOR AND FRAME
	PARTITION TYPE, SEE SHEET AXXX FOR DETAILS
	ROOM NAME AND NUMBER
	DOOR NUMBER

PRELIMINARY DOCUMENT - NOT FOR CONSTRUCTION

Issued for

11.25.2020 - HISTORIC DISTRICT COMMISSION

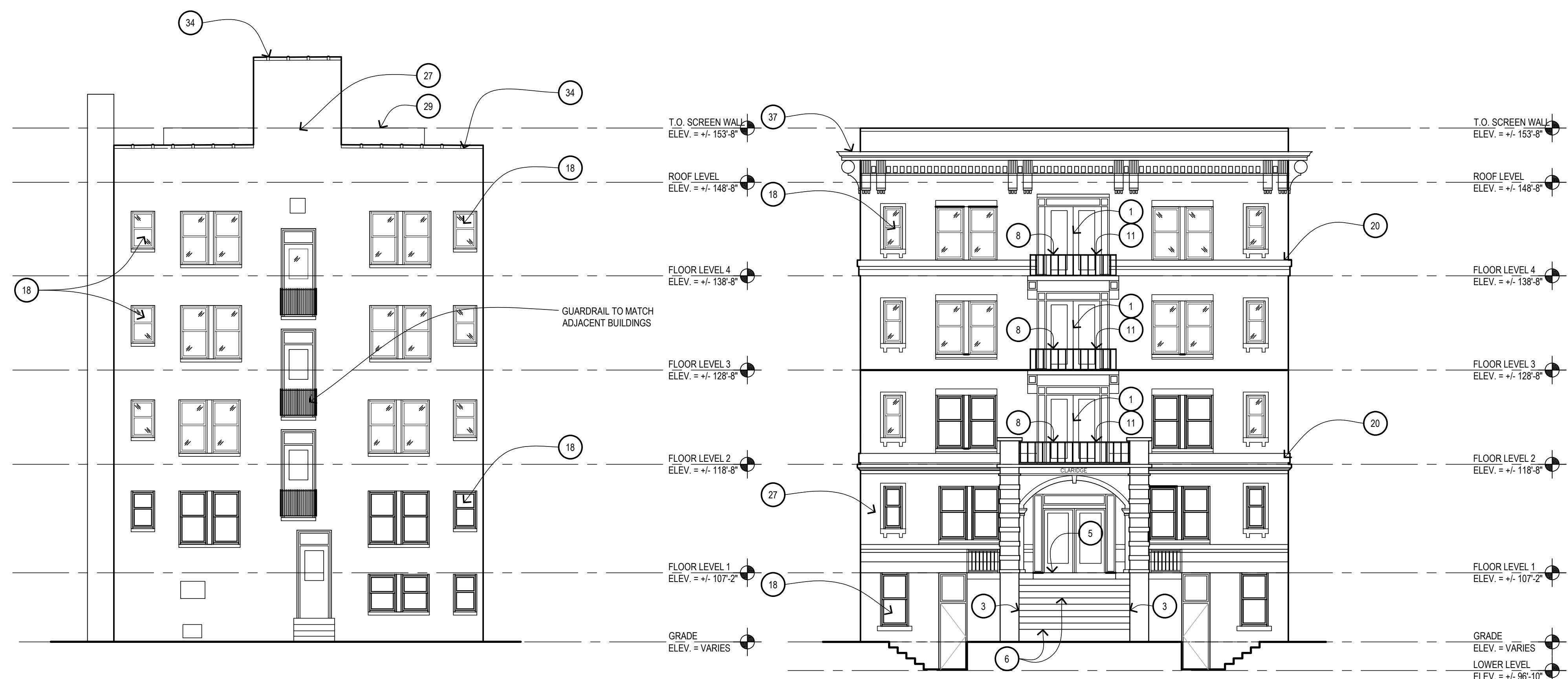
Drawn Preliminary
 Checked Construction
 Approved Record
RMM
 Approved
MW
 Bidpak Number

Job Number
2020078
 Title
BASEMENT & GROUND FLOOR PLAN

Sheet
3A101

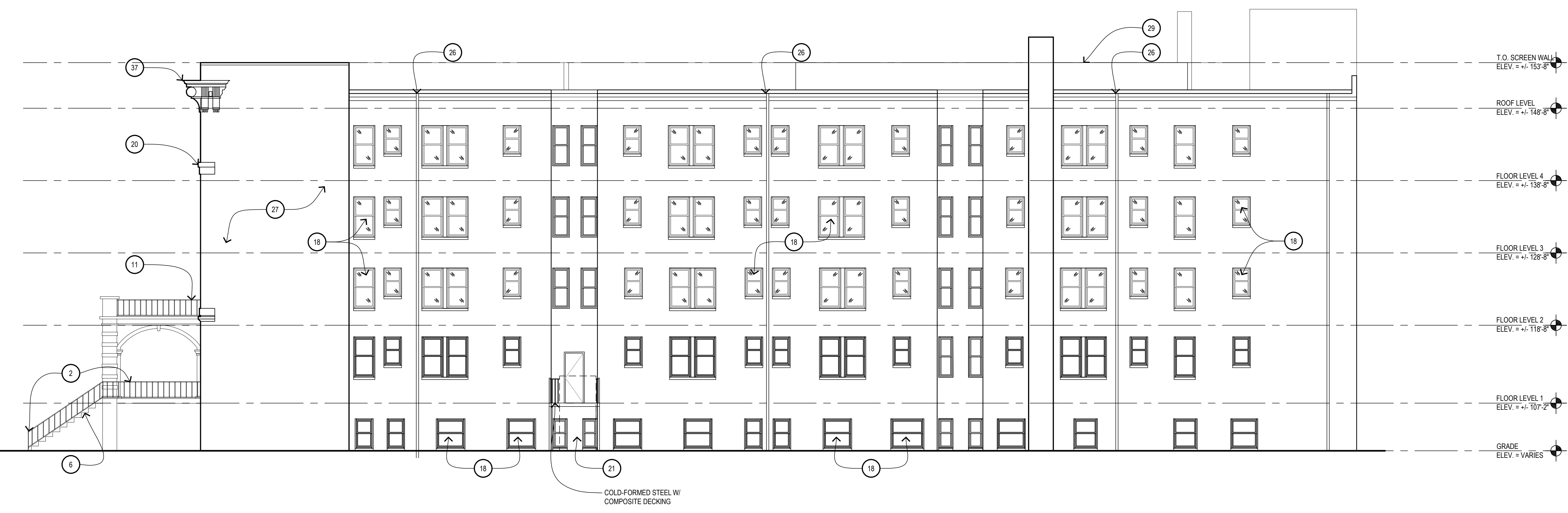
KEYNOTES:

- 1 RECONSTRUCTED DOUBLE WOOD/GLASS DOORS
- 2 NEW METAL RAILING, PAINTED
- 3 NEW METAL HAND/GUARD RAIL AT EXTERIOR STAIR, PAINTED
- 4 NEW INSULATED PRE-FINISHED ALUM ENTRANCE/STOREFRONT SYSTEM
- 5 RECONSTRUCTED CONCRETE PORCH LANDING
- 6 RECONSTRUCTED CONCRETE STEPS
- 7 RECONSTRUCTED MASONRY STAIRWELL RETAINING WALL W/ LIMESTONE CAPS
- 8 RECONSTRUCTED CONCRETE STEPS & REPLACEMENT METAL HANDRAILS (PAINTED)
- 9 NEW INSULATED PRE-FINISHED ALUM ENTRANCE/STOREFRONT SYSTEM
- 10 NEW WINDOW UNIT W/ INSULATED GLASS
- 11 NEW METAL GUARD RAIL SYSTEM AT BALCONY
- 12 RECONSTRUCTED WOOD BALCONY W/ SYNTHETIC DECKING/TRIM
- 13 RECONSTRUCTED MASONRY PORCH KNEE WALL AND ASSOCIATED REINFORCED CONCRETE FOOTING
- 14 RECONSTRUCTED STONE PORCH, STEPS, ASSOCIATED REINFORCED CONCRETE FOOTINGS & METAL HANDRAILS (PAINTED)
- 15 RECONSTRUCTED EXTERIOR STAIR SYSTEM: FRAMING, LANDINGS, STAIRS, RAILS, GUARDRAILS HISTORICALLY APPROPRIATE
- 16 RECONSTRUCTED FLOOR ASSEMBLY
- 17 RECONSTRUCTED STAIRS, LANDINGS, RAIL/GUARD RAIL SYSTEM W/ HISTORICALLY APPROPRIATE MATERIALS/ FINISHES
- 18 NEW WINDOW UNIT WITH INSULATED GLAZING
- 19 NEW HISTORICALLY APPROPRIATE CLADDING
- 20 EXISTING STONE TRIM DETAIL
- 21 NEW ADA COMPLIANT LIFT, PROVIDE POWER
- 22 NEW SINGLE PLY ROOF MEMBRANE ON MN R-30 INSULATION
- 23 PROVIDE NEW SHEATHING AT VERTICAL PORTION OF PARAPET FOR NEW ROOFING
- 24 NEW SKYLIGHT WITH INTEGRAL CURB
- 25 PROVIDE NEW SINGLE PLY ROOF FLASHING AT PROJECTED BAY WINDOWS
- 26 PROVIDE NEW GUTTERS/DOWNSPOUTS
- 27 EXISTING BRICK CLADDING, REFER TO FUTURE RESTORATION DRAWINGS
- 28 EXISTING CORNICE, REFER TO FUTURE RESTORATION DRAWINGS
- 29 PREFINISHED GALV METAL ROOF SCREEN, 5'-0" HIGH, 12" ABOVE ROOF. PROVIDE GALV SUPPORTS AT 6'-0" O.C., PROVIDE BLOCKING AT EXISTING ROOF STRUCTURE TO ACCOMMODATE.
- 30 RESTORED LIMESTONE BASE
- 31 EXISTING DTE PEDESTAL/TRANSFORMER
- 32 RECONSTRUCTED BAY WINDOW PROJECTIONS W/ NEW INSULATED GLAZING
- 33 NEW BALCONY CONSTRUCTION, METAL RAIL/GUARD RAIL SYSTEM, SYNTHETIC DECKING ON TREATED WOOD, PROVIDE REINF CONCRETE FOOTINGS
- 34 EXISTING CLAY TILE PARAPET COPING, REFER TO FUTURE RESTORATION DRAWINGS
- 35 NEW WOOD ENTRY DOOR SYSTEM W/ GLAZING
- 36 NEW INSULATED OVERHEAD DOOR
- 37 NEW CORNICES, REFERENCE ADJACENT BUILDINGS AS BASIS OF DESIGN



3
 2A101
 1/8" = 1'-0"
459 HENRY SOUTH EXTERIOR ELEVATION

2
 2A101
 1/8" = 1'-0"
459 HENRY NORTH EXTERIOR ELEVATION



1
 2A101
 1/8" = 1'-0"
459 HENRY WEST EXTERIOR ELEVATION

GENERAL NOTE
 PER CIVIL 129.6 = 100'-0"

PRELIMINARY DOCUMENT - NOT FOR CONSTRUCTION

Issued for

11.25.2020 - HISTORIC DISTRICT COMMISSION

Drawn	<input checked="" type="checkbox"/> Preliminary
Checked	<input type="checkbox"/> Construction
RMM	<input type="checkbox"/> Record
Approved	Do not scale
MW	Use figured dimensions only
Bidpak Number	

Job Number
2020078

Title
EXTERIOR ELEVATIONS 459 HENRY

Sheet
2A401



3
 2A101
**459 HENRY SOUTH
 EXTERIOR ELEVATION**
 1/8" = 1'-0"

2
 2A101
**459 HENRY NORTH
 EXTERIOR ELEVATION**
 1/8" = 1'-0"



1
 2A101
**459 HENRY WEST
 EXTERIOR ELEVATION**
 1/8" = 1'-0"

PRELIMINARY DOCUMENT - NOT FOR CONSTRUCTION

Issued for _____

**11.25.2020 - HISTORIC
 DISTRICT COMMISSION**

Drawn Preliminary
 Checked Construction
 Approved Record
RMM
 Approved
 MW
 Bidpak Number

**Do not scale
 Use figured
 dimensions only**

Job Number
2020078

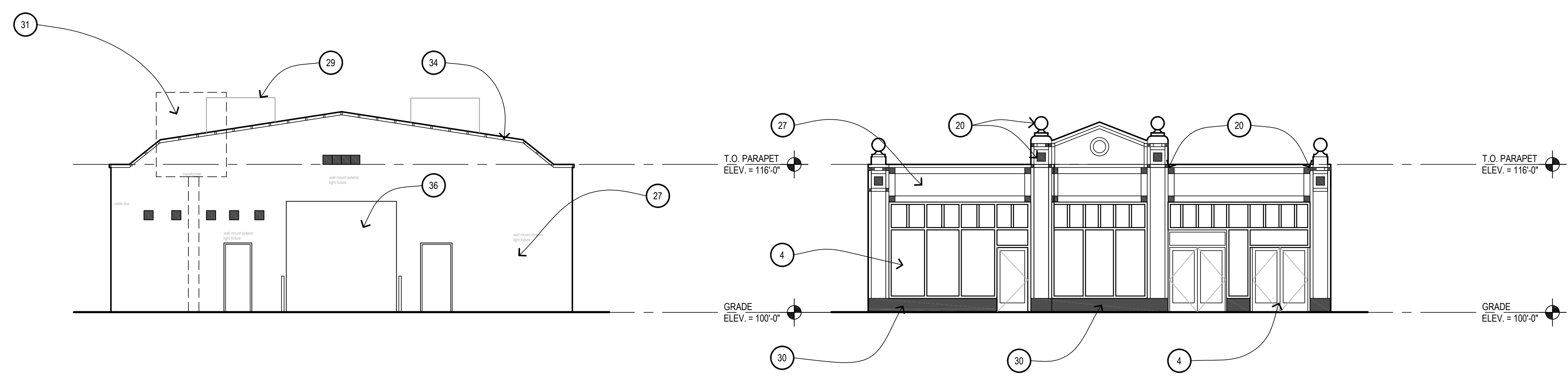
Title
**EXTERIOR
 ELEVATIONS
 459 HENRY**

Sheet
2A401.1

GENERAL NOTE
 PER CIVIL 129.6 = 100'-0"

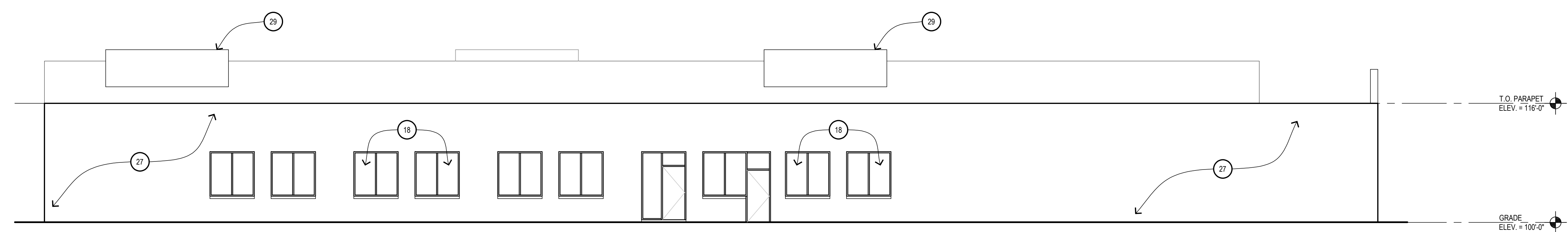
KEYNOTES:

- 1 RECONSTRUCTED DOUBLE WOOD/GLASS DOORS
- 2 NEW METAL RAILING, PAINTED
- 3 NEW METAL HAND/GUARD RAIL AT EXTERIOR STAIR, PAINTED
- 4 NEW INSULATED PRE-FINISHED ALUM ENTRANCE/STOREFRONT SYSTEM
- 5 RECONSTRUCTED CONCRETE PORCH LANDING
- 6 RECONSTRUCTED CONCRETE STEPS
- 7 RECONSTRUCTED MASONRY STAIRWELL RETAINING WALL W/ LIMESTONE CAPS
- 8 RECONSTRUCTED CONCRETE STEPS & REPLACEMENT METAL HANDRAILS (PAINTED)
- 9 NEW INSULATED PRE-FINISHED ALUM ENTRANCE/STOREFRONT SYSTEM
- 10 NEW WINDOW UNIT W/ INSULATED GLASS
- 11 NEW METAL GUARD RAIL SYSTEM AT BALCONY
- 12 RECONSTRUCTED WOOD BALCONY W/ SYNTHETIC DECKING/TRIM
- 13 RECONSTRUCTED MASONRY PORCH KNEE WALL AND ASSOCIATED REINFORCED CONCRETE FOOTING
- 14 RECONSTRUCTED STONE PORCH, STEPS, ASSOCIATED REINFORCED CONCRETE FOOTINGS & METAL HANDRAILS (PAINTED)
- 15 RECONSTRUCTED EXTERIOR STAIR SYSTEM: FRAMING, LANDINGS, STAIRS, RAILS, GUARDRAILS HISTORICALLY APPROPRIATE
- 16 RECONSTRUCTED FLOOR ASSEMBLY
- 17 RECONSTRUCTED STAIRS, LANDINGS, RAIL/GUARD RAIL SYSTEM W/ HISTORICALLY APPROPRIATE MATERIALS/ FINISHES
- 18 NEW WINDOW UNIT WITH INSULATED GLAZING
- 19 NEW HISTORICALLY APPROPRIATE CLADDING
- 20 EXISTING STONE TRIM DETAIL
- 21 NEW ADA COMPLIANT LIFT, PROVIDE POWER
- 22 NEW SINGLE PLY ROOF MEMBRANE ON MIN R-30 INSULATION
- 23 PROVIDE NEW SHEATHING AT VERTICAL PORTION OF PARAPET FOR NEW ROOFING
- 24 NEW SKYLIGHT WITH INTEGRAL CURB
- 25 PROVIDE NEW SINGLE PLY ROOF FLASHING AT PROJECTED BAY WINDOWS
- 26 PROVIDE NEW GUTTERS/DOWNSPOUTS
- 27 EXISTING BRICK CLADDING, REFER TO FUTURE RESTORATION DRAWINGS
- 28 EXISTING CORNICE, REFER TO FUTURE RESTORATION DRAWINGS
- 29 PREFINISHED GALV METAL ROOF SCREEN, 5'-0" HIGH, 12" ABOVE ROOF, PROVIDE GALV SUPPORTS AT 6'-0" O.C., PROVIDE BLOCKING AT EXISTING ROOF STRUCTURE TO ACCOMMODATE.
- 30 RESTORED LIMESTONE BASE
- 31 EXISTING DTE PEDESTAL/TRANSFORMER
- 32 RECONSTRUCTED BAY WINDOW PROJECTIONS W/ NEW INSULATED GLAZING
- 33 NEW BALCONY CONSTRUCTION, METAL RAIL/GUARD RAIL SYSTEM, SYNTHETIC DECKING ON TREATED WOOD, PROVIDE REINF CONCRETE FOOTINGS
- 34 EXISTING CLAY TILE PARAPET COPING, REFER TO FUTURE RESTORATION DRAWINGS
- 35 NEW WOOD ENTRY DOOR SYSTEM W/ GLAZING
- 36 NEW INSULATED OVERHEAD DOOR
- 37 NEW CORNICES, REFERENCE ADJACENT BUILDINGS AS BASIS OF DESIGN

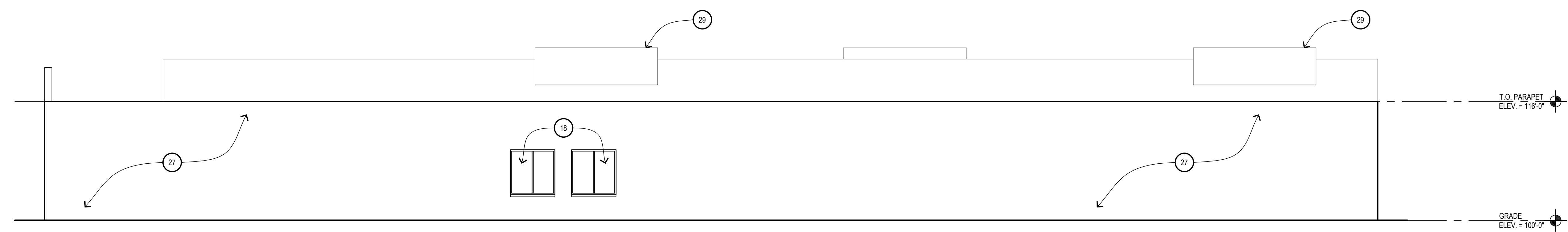


4
 3A101
 1/8" = 1'-0"
447 HENRY SOUTH EXTERIOR ELEVATION

3
 3A101
 1/8" = 1'-0"
447 HENRY NORTH EXTERIOR ELEVATION



2
 3A101
 1/8" = 1'-0"
447 HENRY EAST EXTERIOR ELEVATION



1
 3A101
 1/8" = 1'-0"
447 HENRY WEST EXTERIOR ELEVATION

PRELIMINARY DOCUMENT - NOT FOR CONSTRUCTION

Issued for _____

11.25.2020 - HISTORIC DISTRICT COMMISSION

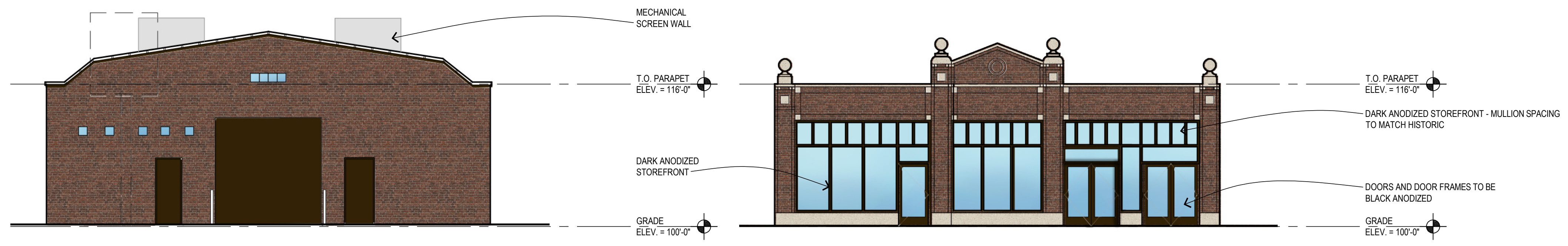
Drawn	<input checked="" type="checkbox"/> Preliminary
JKM	<input type="checkbox"/> Construction
Checked	<input type="checkbox"/> Record
RMM	
Approved	Do not scale
MW	Use figured dimensions only
Bidpak Number	

Job Number
2020078

Title
EXTERIOR ELEVATIONS 447 HENRY

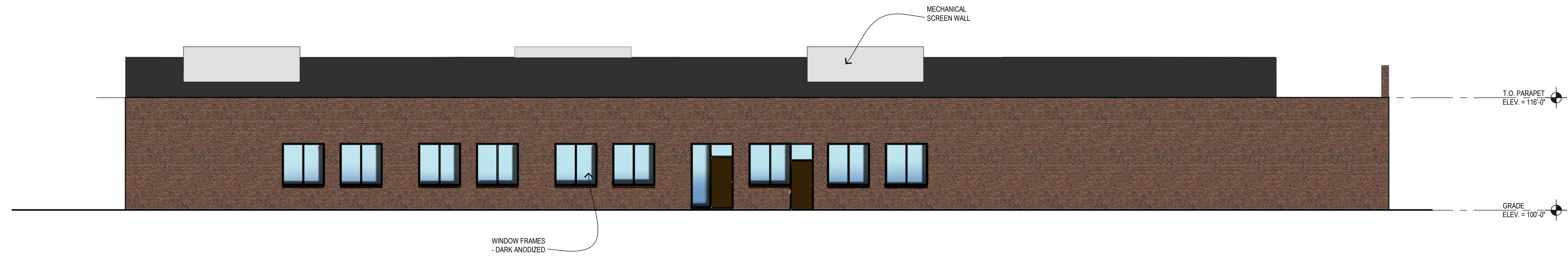
Sheet
3A401

GENERAL NOTE
 *PER CIVIL 129.6 = 100'-0"

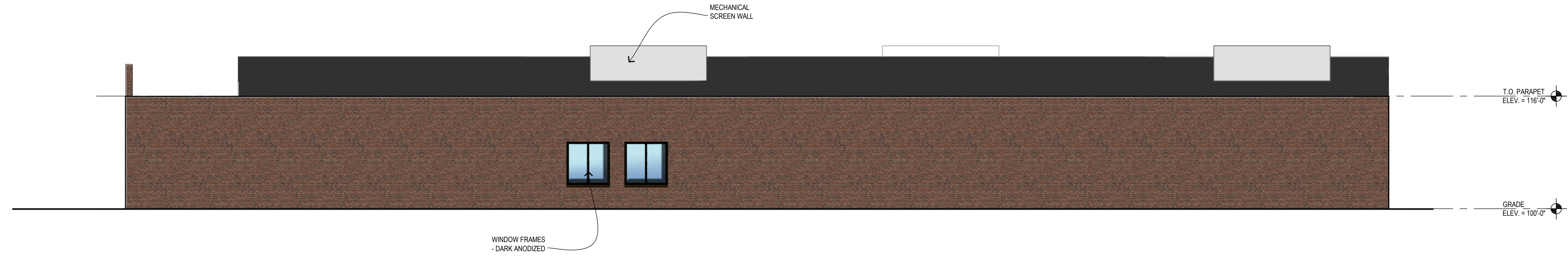


4
 3A101
 447 HENRY SOUTH
 EXTERIOR ELEVATION
 1/8" = 1'-0"

3
 3A101
 447 HENRY NORTH
 EXTERIOR ELEVATION
 1/8" = 1'-0"



2
 3A101
 447 HENRY EAST
 EXTERIOR ELEVATION
 1/8" = 1'-0"



1
 3A101
 447 HENRY WEST
 EXTERIOR ELEVATION
 1/8" = 1'-0"

PRELIMINARY DOCUMENT - NOT FOR CONSTRUCTION

Issued for _____

11.25.2020 - HISTORIC DISTRICT COMMISSION

Drawn Preliminary
 JKM
 Checked Construction
 RMM Record
 Approved
 MW
 Bidpak Number _____
 Do not scale
 Use figured
 dimensions only

Job Number
 2020078

Title
 EXTERIOR ELEVATIONS
 447 HENRY

Sheet
 3A401.1

GENERAL NOTE
 PER CIVIL 129.6 = 100'-0"



3
 4A101
**439 HENRY SOUTH
 EXTERIOR ELEVATION**
 1/8" = 1'-0"

2
 4A101
**439 HENRY NORTH
 EXTERIOR ELEVATION**
 1/8" = 1'-0"



1
 4A101
**439 HENRY WEST
 EXTERIOR ELEVATION**
 1/8" = 1'-0"

PRELIMINARY DOCUMENT - NOT FOR CONSTRUCTION

Issued for _____

**11.25.2020 - HISTORIC
 DISTRICT COMMISSION**

Drawn Preliminary
 Checked Construction
 RMM Record
 Approved _____
 MW Bidpak Number _____
 Do not scale
 Use figured
 dimensions only

Job Number
2020078

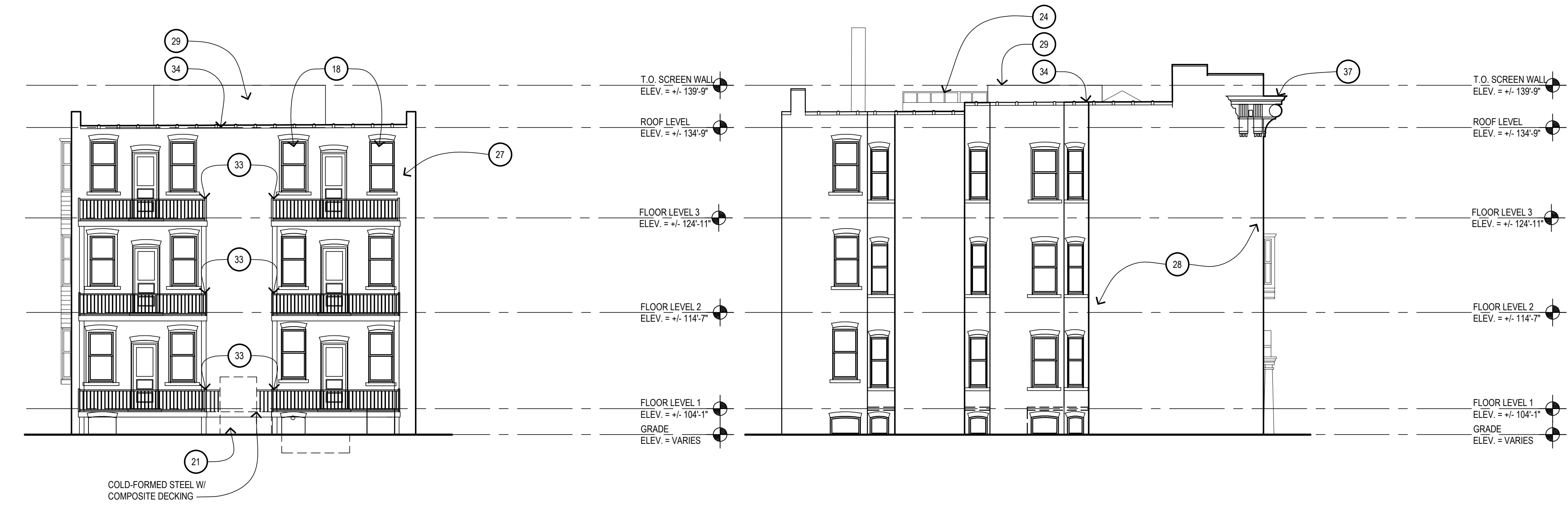
Title
**EXTERIOR
 ELEVATIONS
 439 HENRY**

Sheet
4A401.1

GENERAL NOTE
 *PER CIVIL 129.6 = 100'-0"

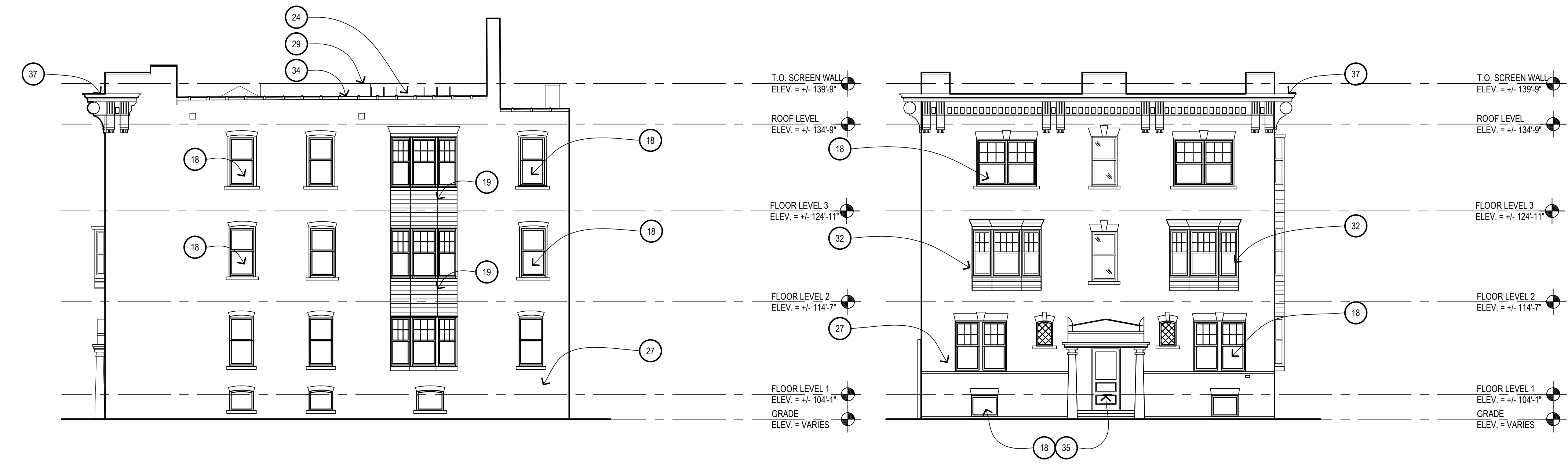
KEYNOTES:

- 1 RECONSTRUCTED DOUBLE WOOD/GLASS DOORS
- 2 NEW METAL RAILING, PAINTED
- 3 NEW METAL HAND/GUARD RAIL AT EXTERIOR STAIR, PAINTED
- 4 NEW INSULATED PRE-FINISHED ALUM ENTRANCE/STOREFRONT SYSTEM
- 5 RECONSTRUCTED CONCRETE PORCH LANDING
- 6 RECONSTRUCTED CONCRETE STEPS
- 7 RECONSTRUCTED MASONRY STAIRWELL RETAINING WALL W/ LIMESTONE CAPS
- 8 RECONSTRUCTED CONCRETE STEPS & REPLACEMENT METAL HANDRAILS (PAINTED)
- 9 NEW INSULATED PRE-FINISHED ALUM ENTRANCE/STOREFRONT SYSTEM
- 10 NEW WINDOW UNIT W/ INSULATED GLASS
- 11 NEW METAL GUARD RAIL SYSTEM AT BALCONY
- 12 RECONSTRUCTED WOOD BALCONY W/ SYNTHETIC DECKING/TRIM
- 13 RECONSTRUCTED MASONRY PORCH KNEE WALL AND ASSOCIATED REINFORCED CONCRETE FOOTING
- 14 RECONSTRUCTED STONE PORCH, STEPS, ASSOCIATED REINFORCED CONCRETE FOOTINGS & METAL HANDRAILS (PAINTED)
- 15 RECONSTRUCTED EXTERIOR STAIR SYSTEM: FRAMING, LANDINGS, STAIRS, RAILS, GUARDRAILS HISTORICALLY APPROPRIATE
- 16 RECONSTRUCTED FLOOR ASSEMBLY
- 17 RECONSTRUCTED STAIRS, LANDINGS, RAIL/GUARD RAIL SYSTEM W/ HISTORICALLY APPROPRIATE MATERIALS/ FINISHES
- 18 NEW WINDOW UNIT WITH INSULATED GLAZING
- 19 NEW HISTORICALLY APPROPRIATE CLADDING
- 20 EXISTING STONE TRIM DETAIL
- 21 NEW ADA COMPLIANT LIFT, PROVIDE POWER
- 22 NEW SINGLE PLY ROOF MEMBRANE ON MIN R-30 INSULATION
- 23 PROVIDE NEW SHEATHING AT VERTICAL PORTION OF PARAPET FOR NEW ROOFING
- 24 NEW SKYLIGHT WITH INTEGRAL CURB
- 25 PROVIDE NEW SINGLE PLY ROOF FLASHING AT PROJECTED BAY WINDOWS
- 26 PROVIDE NEW GUTTERS/DOWNSPOUTS
- 27 EXISTING BRICK CLADDING, REFER TO FUTURE RESTORATION DRAWINGS
- 28 EXISTING CORNICE, REFER TO FUTURE RESTORATION DRAWINGS
- 29 PREFINISHED GALV METAL ROOF SCREEN, 5'-0" HIGH, 12" ABOVE ROOF, PROVIDE GALV SUPPORTS AT 6'-0" O.C., PROVIDE BLOCKING AT EXISTING ROOF STRUCTURE TO ACCOMMODATE.
- 30 RESTORED LIMESTONE BASE
- 31 EXISTING DTE PEDESTAL/TRANSFORMER
- 32 RECONSTRUCTED BAY WINDOW PROJECTIONS W/ NEW INSULATED GLAZING
- 33 NEW BALCONY CONSTRUCTION, METAL RAIL/GUARD RAIL SYSTEM, SYNTHETIC DECKING ON TREATED WOOD, PROVIDE REINF CONCRETE FOOTINGS
- 34 EXISTING CLAY TILE PARAPET COPING, REFER TO FUTURE RESTORATION DRAWINGS
- 35 NEW WOOD ENTRY DOOR SYSTEM W/ GLAZING
- 36 NEW INSULATED OVERHEAD DOOR
- 37 NEW CORNICES, REFERENCE ADJACENT BUILDINGS AS BASIS OF DESIGN



4
 5A101
 1/8" = 1'-0"
427 HENRY SOUTH EXTERIOR ELEVATION

2
 5A101
 1/8" = 1'-0"
427 HENRY EAST EXTERIOR ELEVATION



3
 5A101
 1/8" = 1'-0"
427 HENRY WEST EXTERIOR ELEVATION

1
 5A101
 1/8" = 1'-0"
427 HENRY NORTH EXTERIOR ELEVATION

PRELIMINARY DOCUMENT - NOT FOR CONSTRUCTION

Issued for

11.25.2020 - HISTORIC DISTRICT COMMISSION

Drawn Preliminary
 JKM Construction
 Checked Record
 RMM
 Approved Do not scale
 MW Use figured dimensions only
 Bidpak Number

Job Number
2020078
 Title
EXTERIOR ELEVATIONS 427 HENRY

Sheet
5A401

GENERAL NOTE
 *PER CIVIL 129.6 = 100'-0"



4
 427 HENRY SOUTH
 EXTERIOR ELEVATION
 SA101 1/8" = 1'-0"

2
 427 HENRY EAST
 EXTERIOR ELEVATION
 SA101 1/8" = 1'-0"



3
 427 HENRY WEST
 EXTERIOR ELEVATION
 SA101 1/8" = 1'-0"

1
 427 HENRY NORTH
 EXTERIOR ELEVATION
 SA101 1/8" = 1'-0"

PRELIMINARY DOCUMENT - NOT FOR CONSTRUCTION

Issued for _____

11.25.2020 - HISTORIC DISTRICT COMMISSION

Drawn Preliminary
 Checked Construction
 RMM Approved Record
 MW Bidpak Number Do not scale Use figured dimensions only

Job Number
 2020078

Title
 EXTERIOR ELEVATIONS
 427 HENRY

Sheet
 5A401.1

GENERAL NOTE
 *PER CIVIL 129.6 = 100'-0"



17
5A401
427 HENRY
EXISTING PHOTO
SCALE AS NOTED

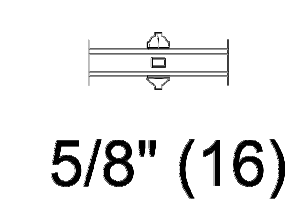


16
5A401
427 HENRY
EXISTING PHOTO
SCALE AS NOTED



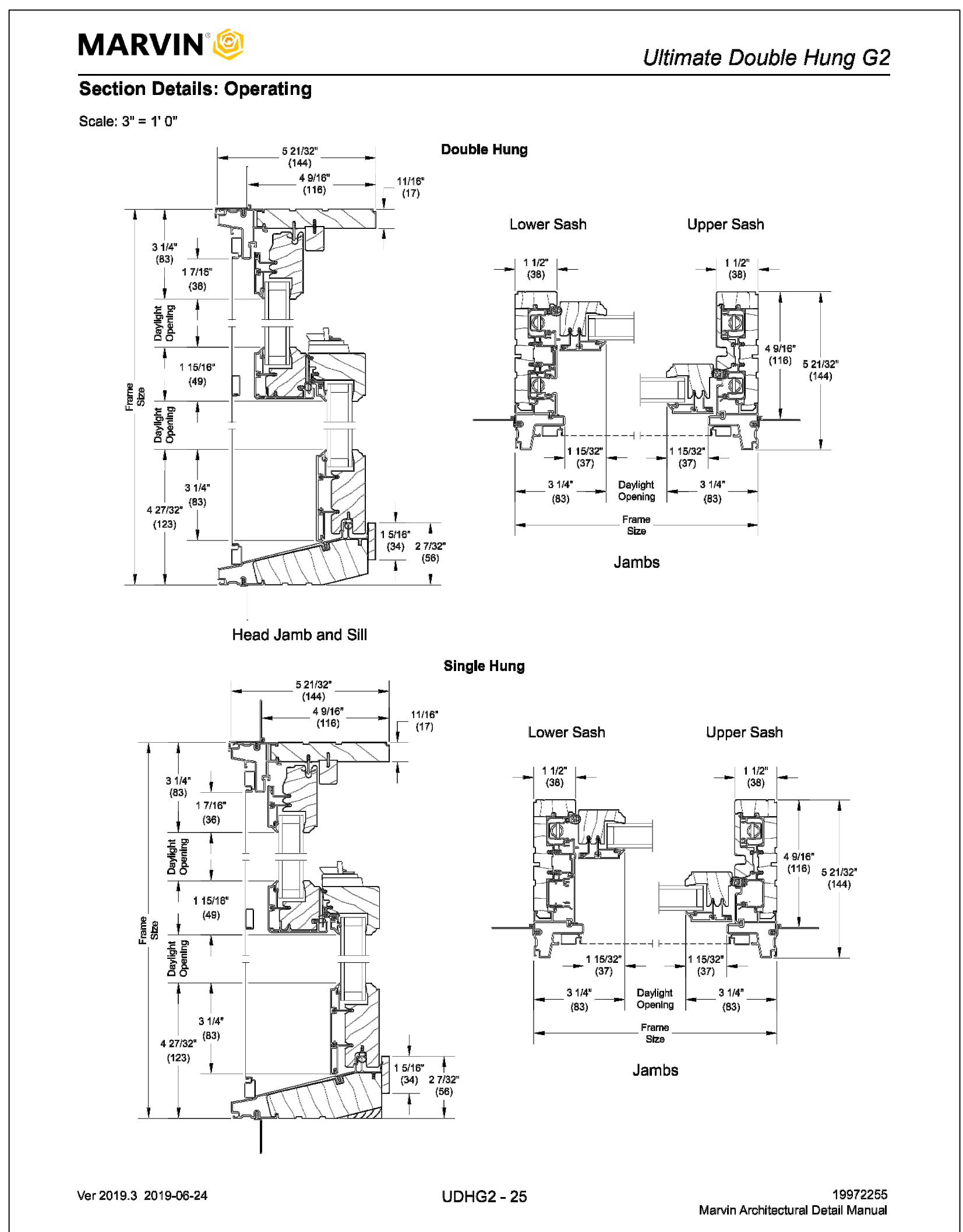
15
5A401
427 HENRY
EXISTING PHOTO
SCALE AS NOTED

WITH SPACER

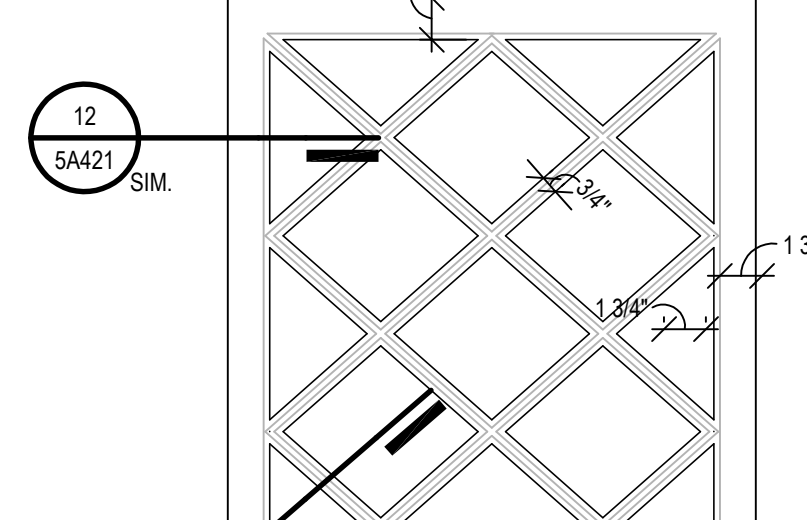
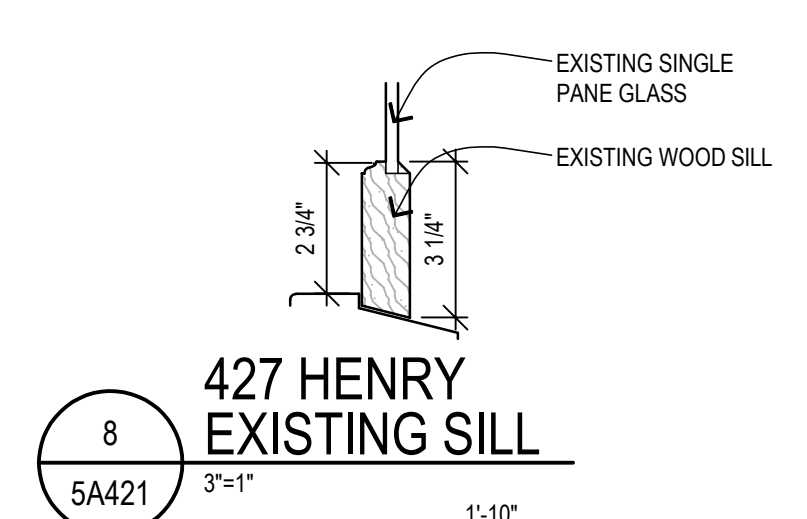
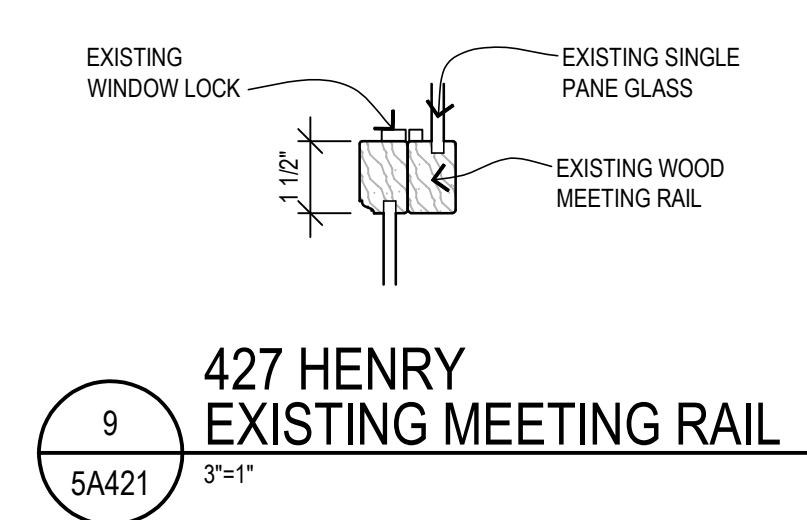
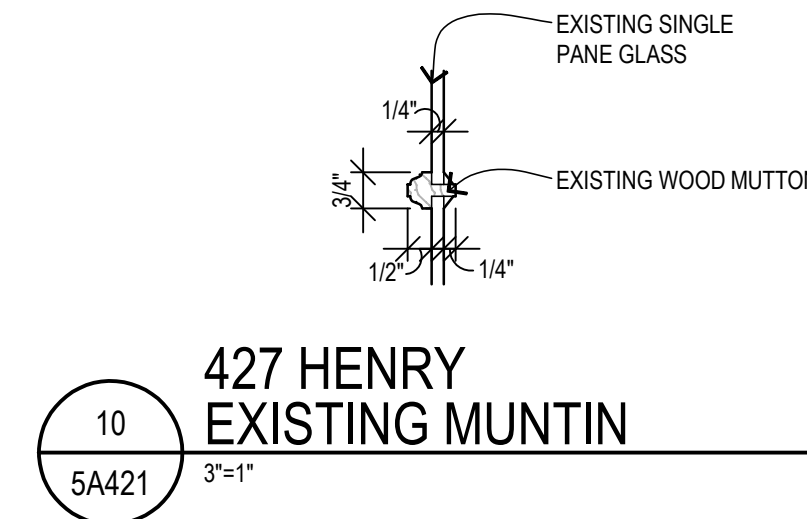
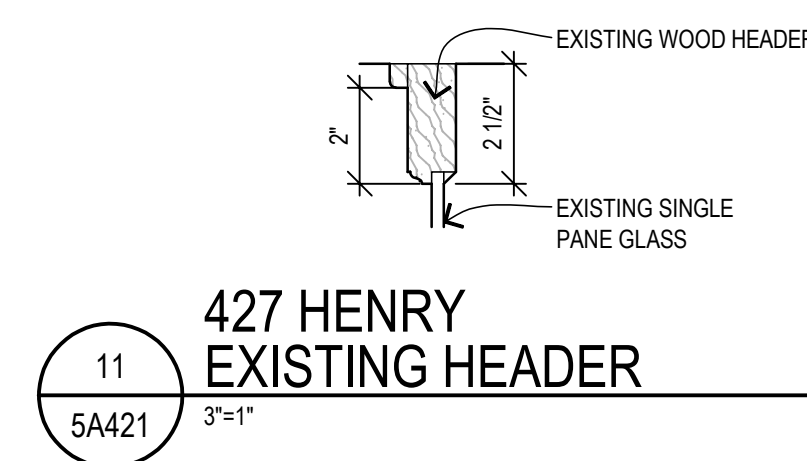
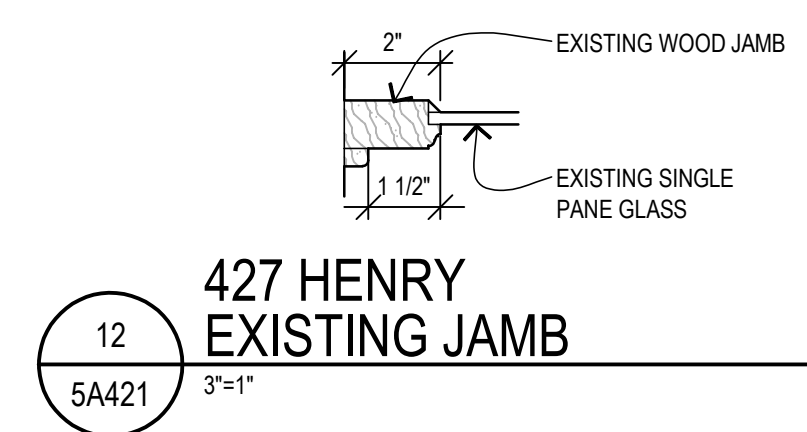


5/8" (16)

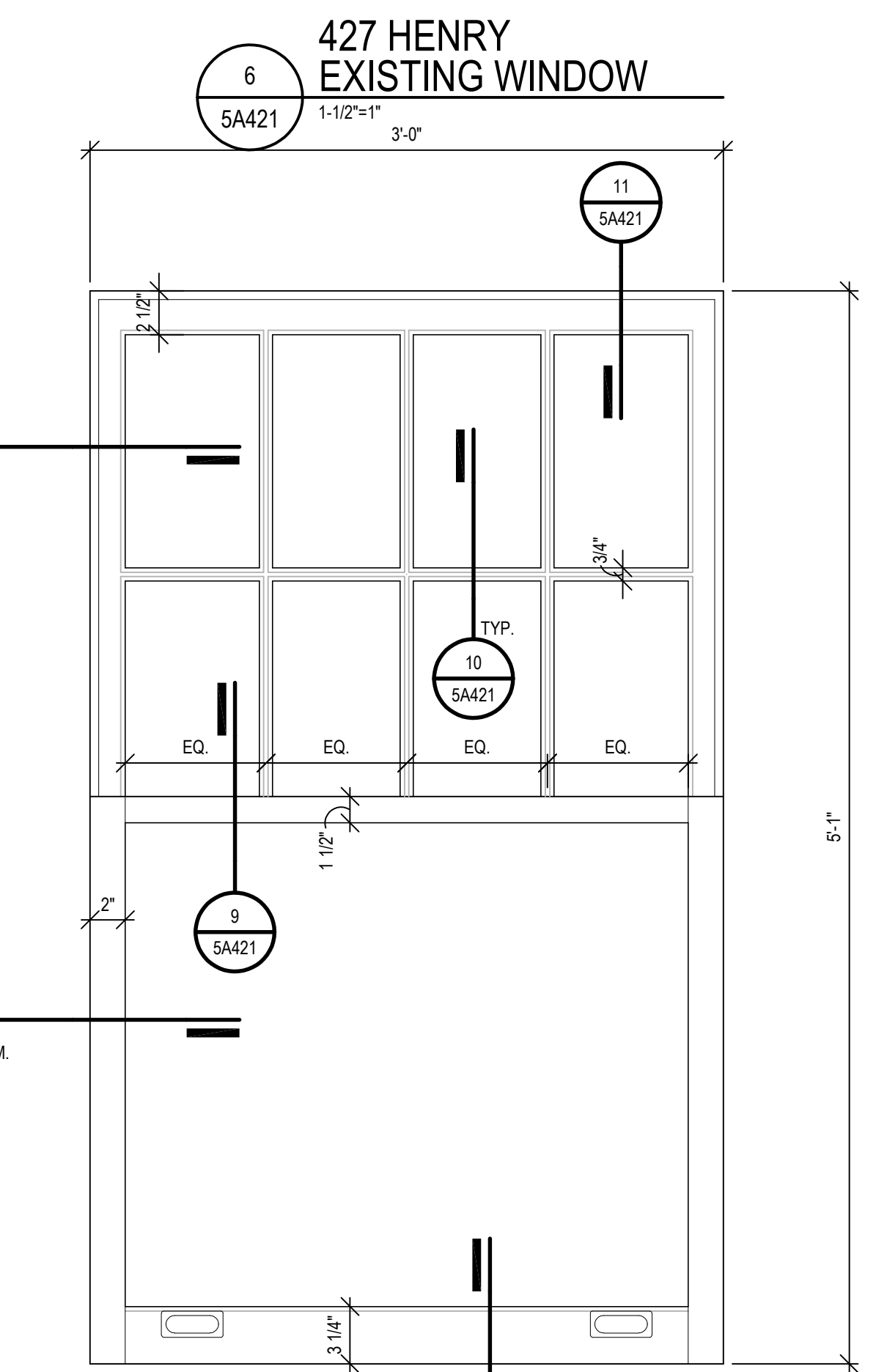
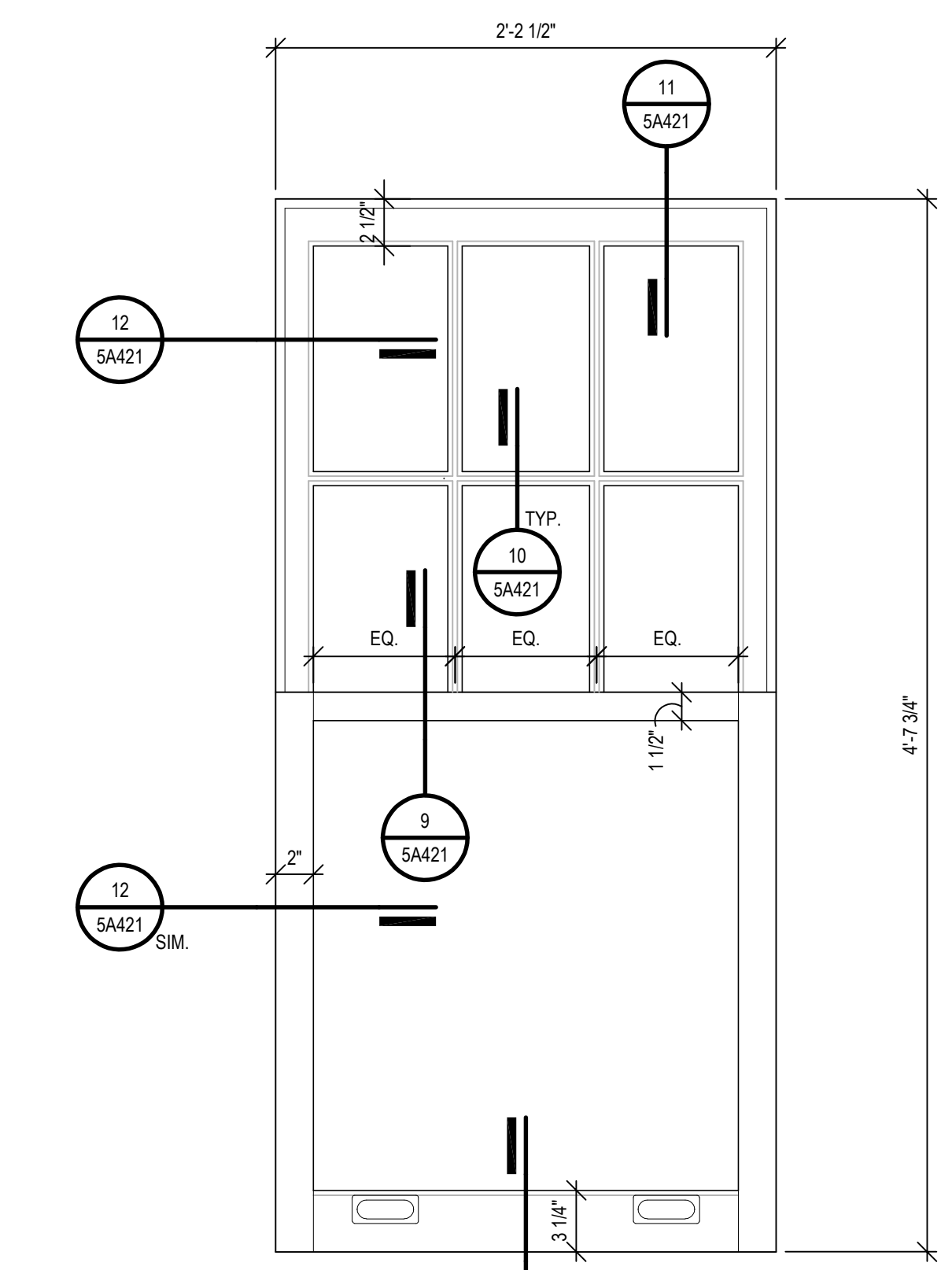
14
5A401
427 HENRY
NEW MUNTIN DETAIL
Not to Scale



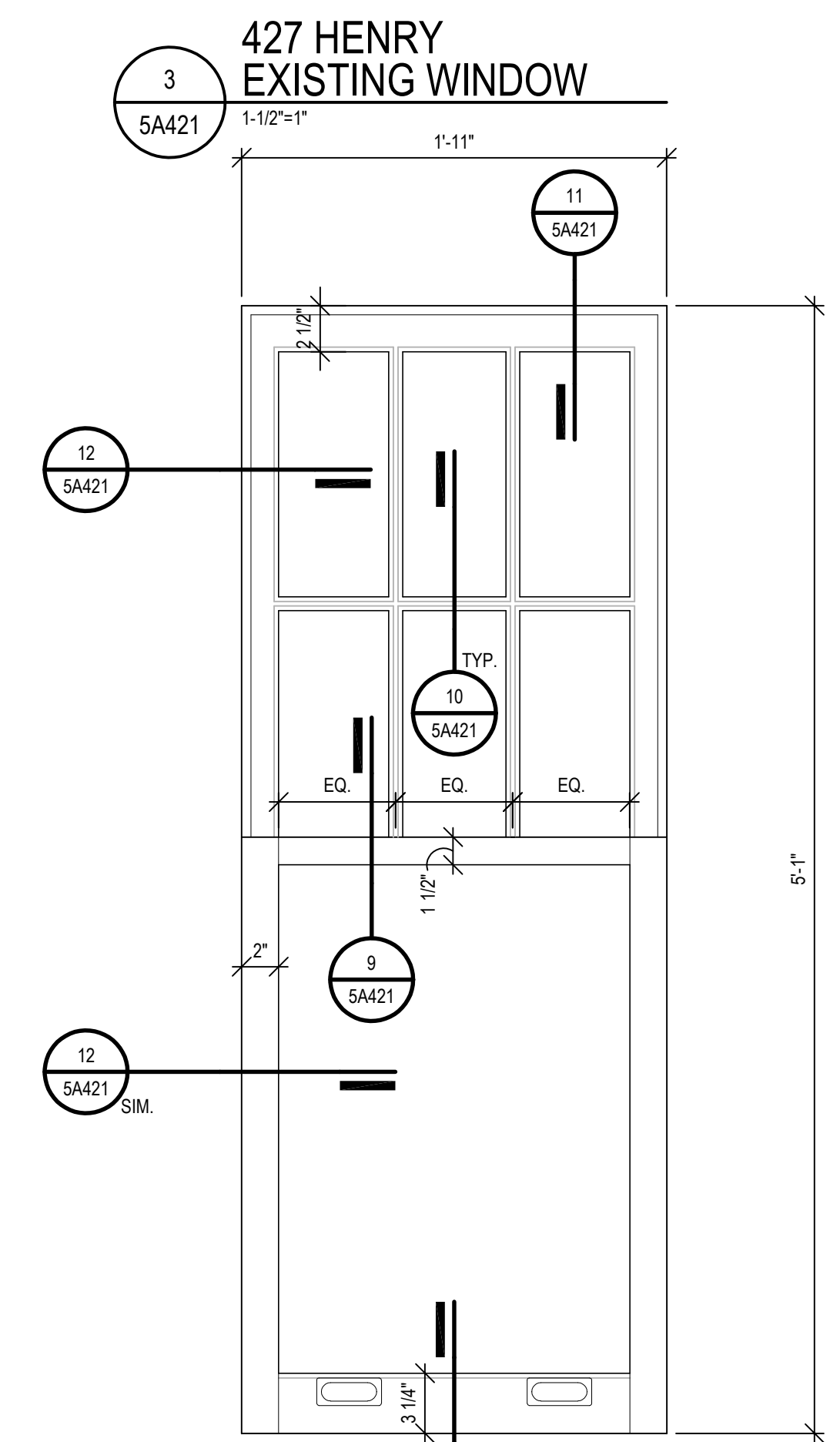
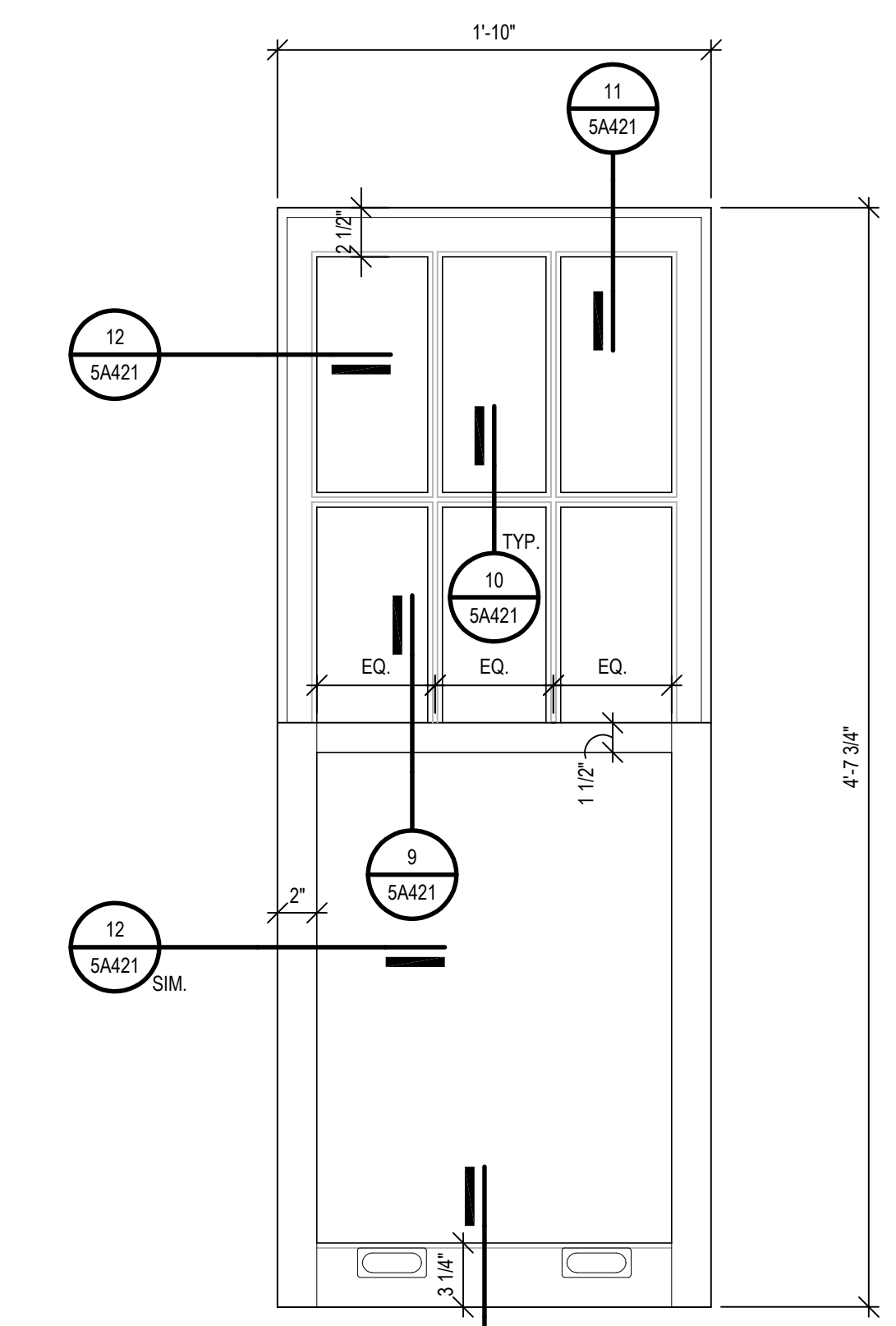
13
5A401
427 HENRY
PROPOSED WINDOW DETAIL
SCALE AS NOTED



7
5A421
427 HENRY
EXISTING WINDOW
1-1/2" = 1"



5
5A421
427 HENRY
EXISTING WINDOW
1-1/2" = 1"



2
5A421
427 HENRY
EXISTING WINDOW
1-1/2" = 1"



4
5A401
427 HENRY WEST
EXTERIOR ELEVATION
1/8" = 1'-0"

1
5A401
427 HENRY NORTH
EXTERIOR ELEVATION
1/8" = 1'-0"

GENERAL NOTE
*PER CIVIL 129.6 = 100'-0"

PRELIMINARY DOCUMENT - NOT FOR CONSTRUCTION