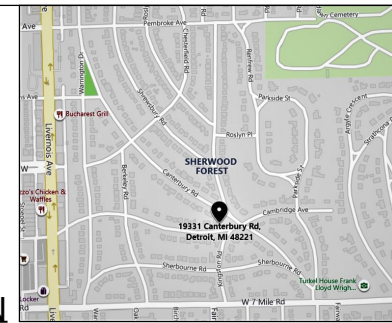


DRAWINGS PROVIDED BY:
BRUSH PARK STUDIO
 DISTINCTIVE DESIGNS FOR UNIQUE LIVING SPACES

Tom Atkinson 313-744-3867
 Detroit, MI 48221 561-400-3652
 www.brushparkstudio.com
 tom@brushparkstudio.com



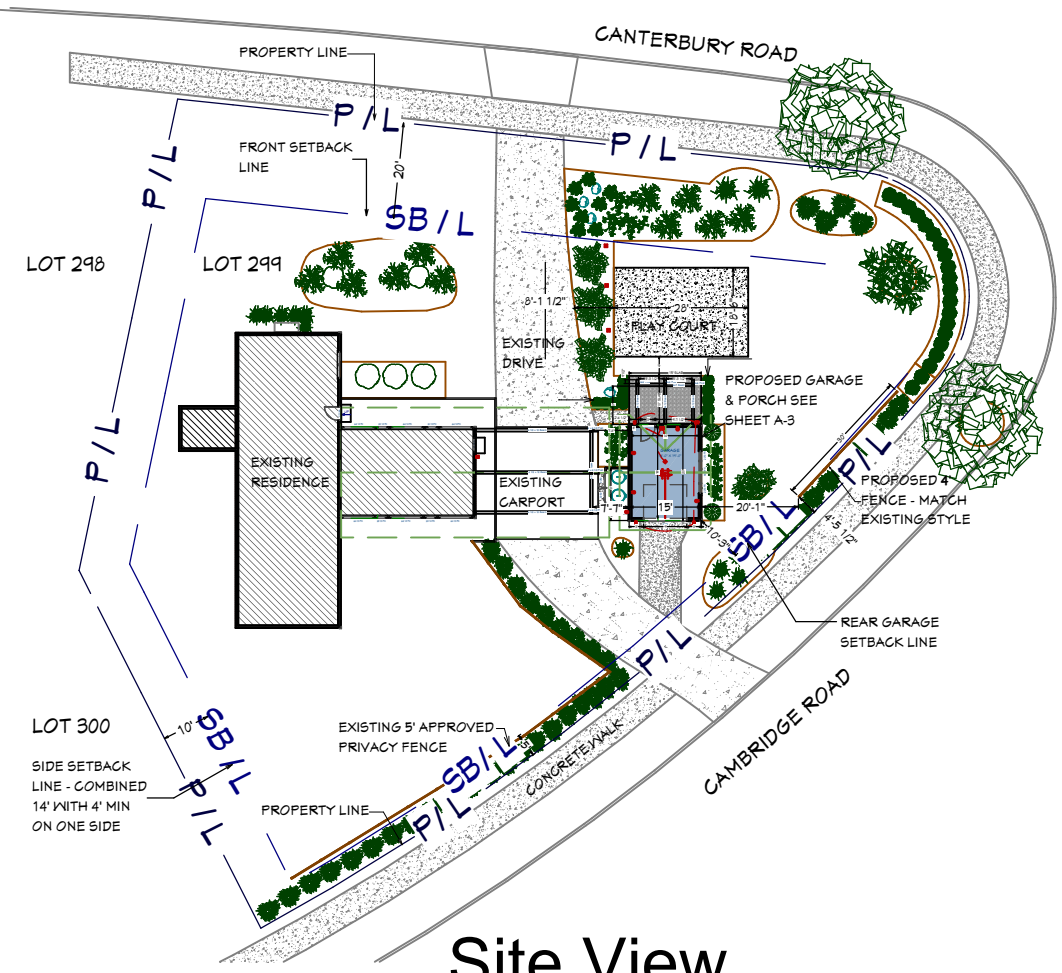
PROPERTY LOCATION



VIEW FROM CANTERBURY ROAD



VIEW FROM CAMBRIDGE AVE



Site View
 Scale: 1" = 20'-0"



POOL TO BE REMOVED

EXISTING YARD

PROJECT DESCRIPTION:
STEIN RESIDENCE
19331 CANTERBURY ROAD
DETROIT MI. 48221

SHEET TITLE:
SITE PLAN
OVERVIEW

PROPERTY DESCRIPTION:

LOT 299, SHERWOOD FOREST SUBDIVISION, ACCORDING TO THE PLAT THEREOF, AS RECORDED IN LIBER 39 OF PLATS, PAGE 11, WAYNE COUNTY RECORDS

SITE DATA

ZONING - RESIDENTIAL - R1
 PROPOSED STORAGE SHED & COVERING
 EXISTING HOUSE
 DRIVEWAYS & PLAY COURT
 LOT AREA
 MAXIMUM LOT COVERAGE
 LOT COVERAGE (5,040/18,030)

SINGLE FAMILY
 503 SQ. FT.
 2213 SQ. FT.
 2324 SQ. FT.
 18,764 SQ. FT.
 35%
 26.8%

BRUSH PARK STUDIO ASSUMES NO RESPONSIBILITY FOR STRUCTURAL, ELECTRICAL, MECHANICAL, FIRE RATED ASSEMBLIES OR OTHER ARCHITECTURAL RELATED DESIGN ISSUES. BRUSH PARK STUDIO DRAWINGS AND SPECIFICATIONS REPRESENTS INFORMATION PERTAINING TO DESIGN INTENT ONLY.

DATE:
 11/18/2020

SCALE:
 1/4"-1'-0"

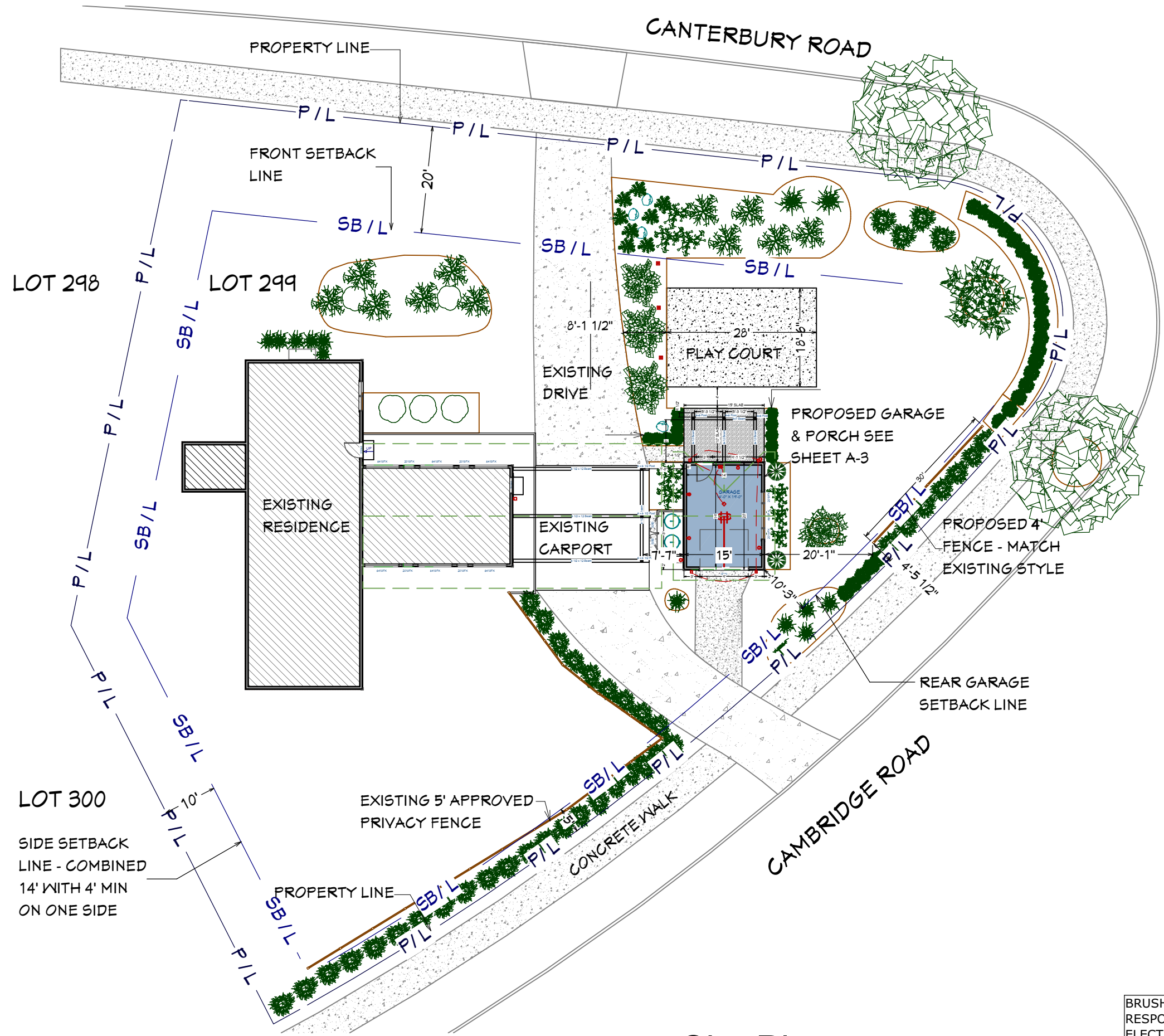
SHEET:

A-1

DRAWINGS PROVIDED BY:



Tom Atkinson 313-744-3867
Detroit, MI 48221 561-400-3652
www.brushparkstudio.com
tom@brushparkstudio.com



PROJECT DESCRIPTION:
STEIN RESIDENCE
19331 CANTERBURY ROAD
DETROIT MI. 48221

SHEET TITLE:
SITE PLAN

DATE:
11/18/2020

SCALE:
1/4" = 1'-0"

SHEET:
A-2

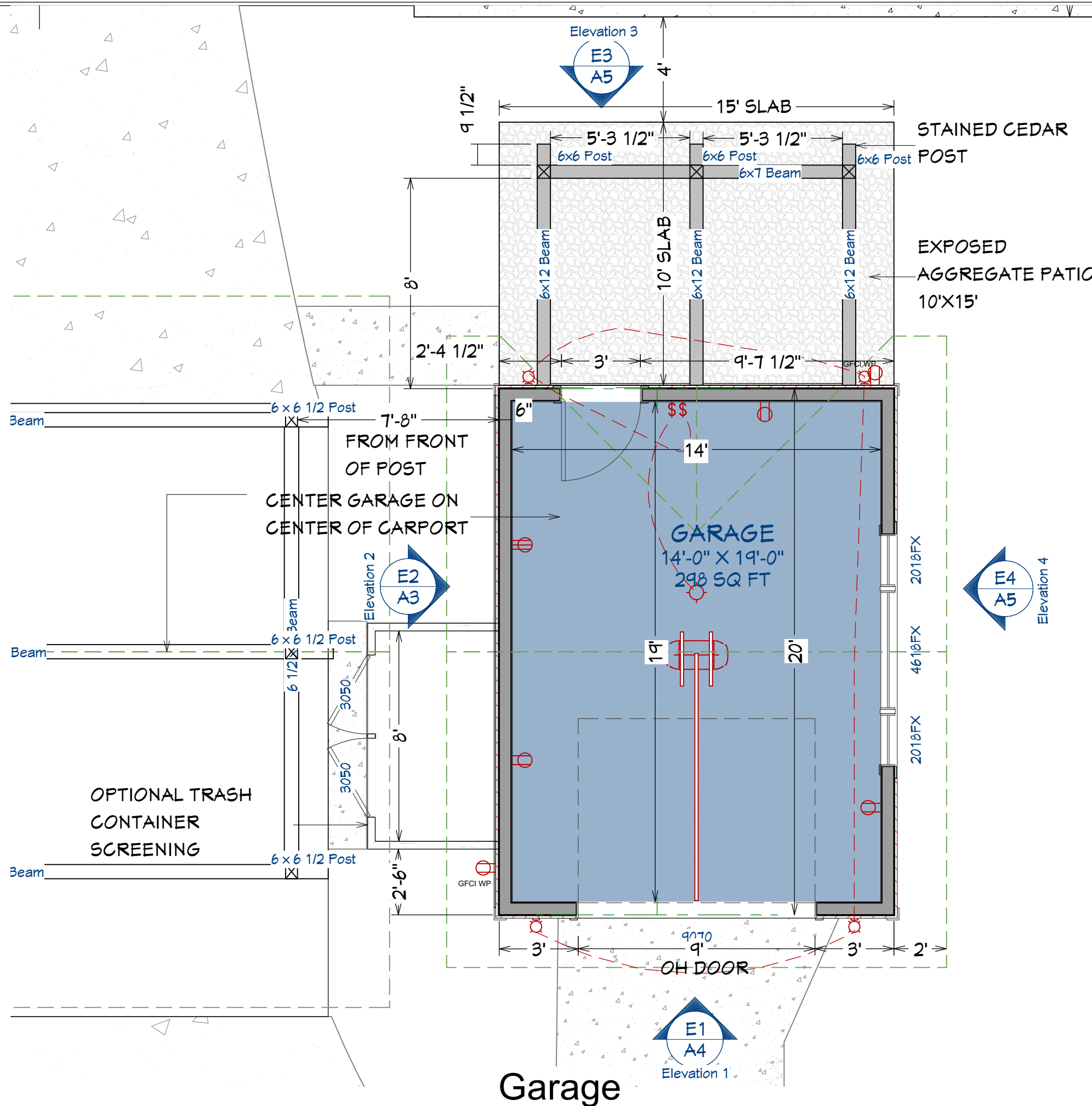
Site Plan
Scale: 1" = 20'-0"

BRUSH PARK STUDIO ASSUMES NO RESPONSIBILITY FOR STRUCTURAL, ELECTRICAL, MECHANICAL, FIRE RATED ASSEMBLIES OR OTHER ARCHITECTURAL RELATED DESIGN ISSUES. BRUSH PARK STUDIO DRAWINGS AND SPECIFICATIONS REPRESENTS INFORMATION PERTAINING TO DESIGN INTENT ONLY.

DRAWINGS PROVIDED BY:



Tom Atkinson 313-744-3867
Detroit, MI 48221 561-400-3652
www.brushparkstudio.com
tom@brushparkstudio.com



Building Overview Front



Building Overview Rear

PROJECT DESCRIPTION:

STEIN RESIDENCE
19331 CANTERBURY ROAD
DETROIT MI. 48221

SHEET TITLE:

GARAGE
PLAN

DATE:

11/18/2020

SCALE:

1/4"-1'-0"

SHEET:

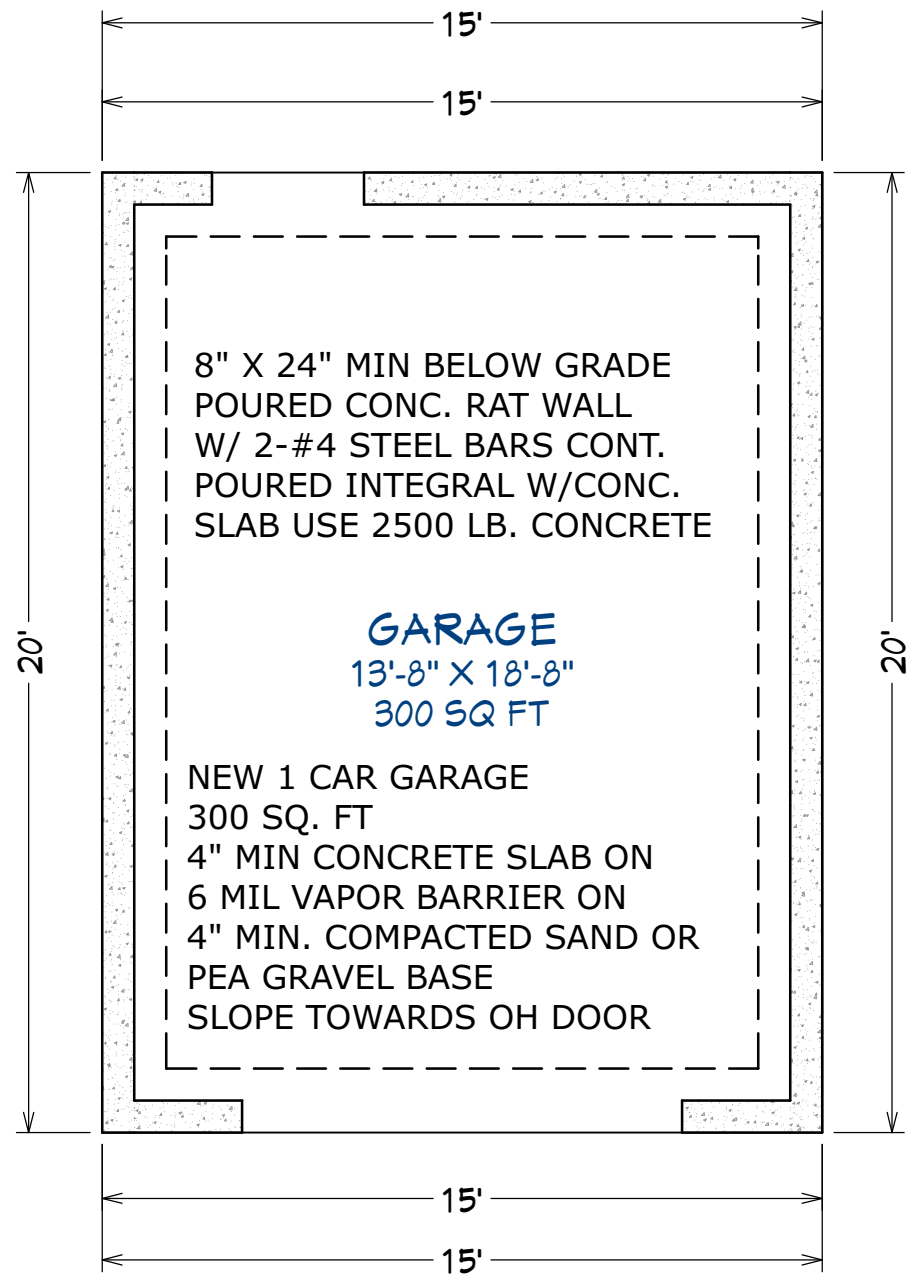
A-3

BRUSH PARK STUDIO ASSUMES NO RESPONSIBILITY FOR STRUCTURAL, ELECTRICAL, MECHANICAL, FIRE RATED ASSEMBLIES OR OTHER ARCHITECTURAL RELATED DESIGN ISSUES. BRUSH PARK STUDIO DRAWINGS AND SPECIFICATIONS REPRESENTS INFORMATION PERTAINING TO DESIGN INTENT ONLY.

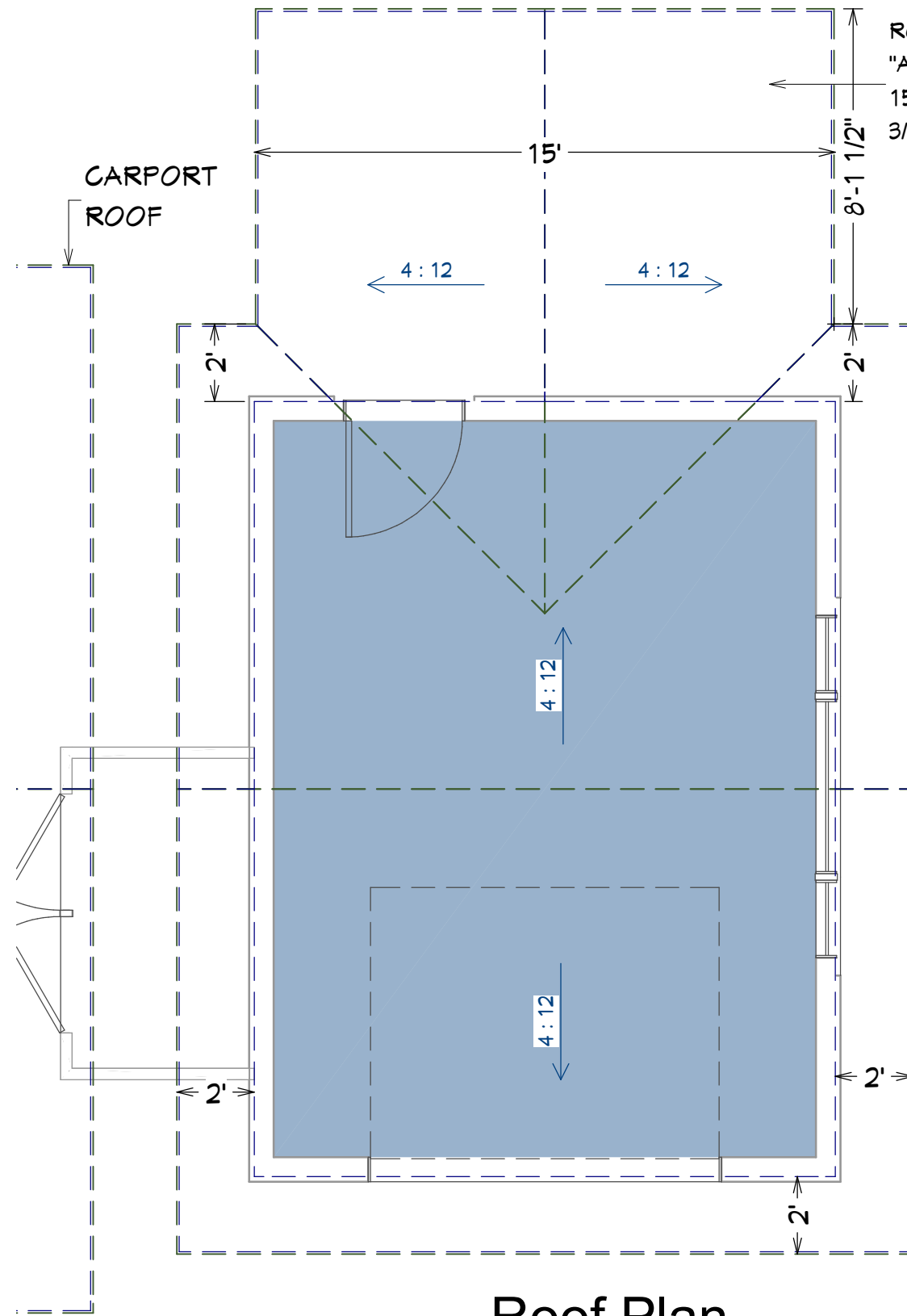
DRAWINGS PROVIDED BY:



Tom Atkinson 313-744-3867
Detroit, MI 48221 561-400-3652
www.brushparkstudio.com
tom@brushparkstudio.com

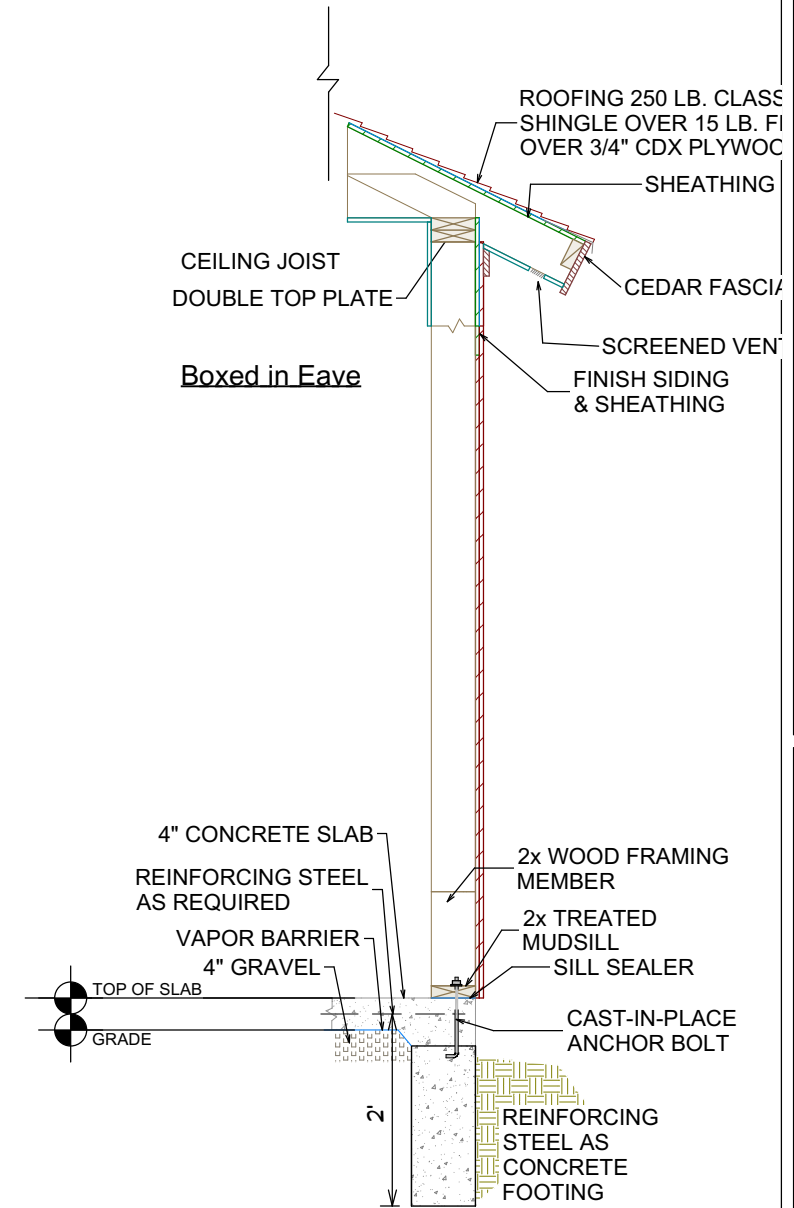


Foundation



Roof Plan

ROOFING 250LB. CLASS
"A" SHINGLE OVER
15 LB. FELT OVER
3/4" CDX PLYWOOD



Typical Wall

BRUSH PARK STUDIO ASSUMES NO RESPONSIBILITY FOR STRUCTURAL, ELECTRICAL, MECHANICAL, FIRE RATED ASSEMBLIES OR OTHER ARCHITECTURAL RELATED DESIGN ISSUES. BRUSH PARK STUDIO DRAWINGS AND SPECIFICATIONS REPRESENTS INFORMATION PERTAINING TO DESIGN INTENT ONLY.

PROJECT DESCRIPTION:

STEIN RESIDENCE
19331 CANTERBURY ROAD
DETROIT MI. 48221

SHEET TITLE:

STORAGE BUILDING
FOUNDATION & ROOF
PLAN

DATE:

11/18/2020

SCALE:

1/4"-1'-0"

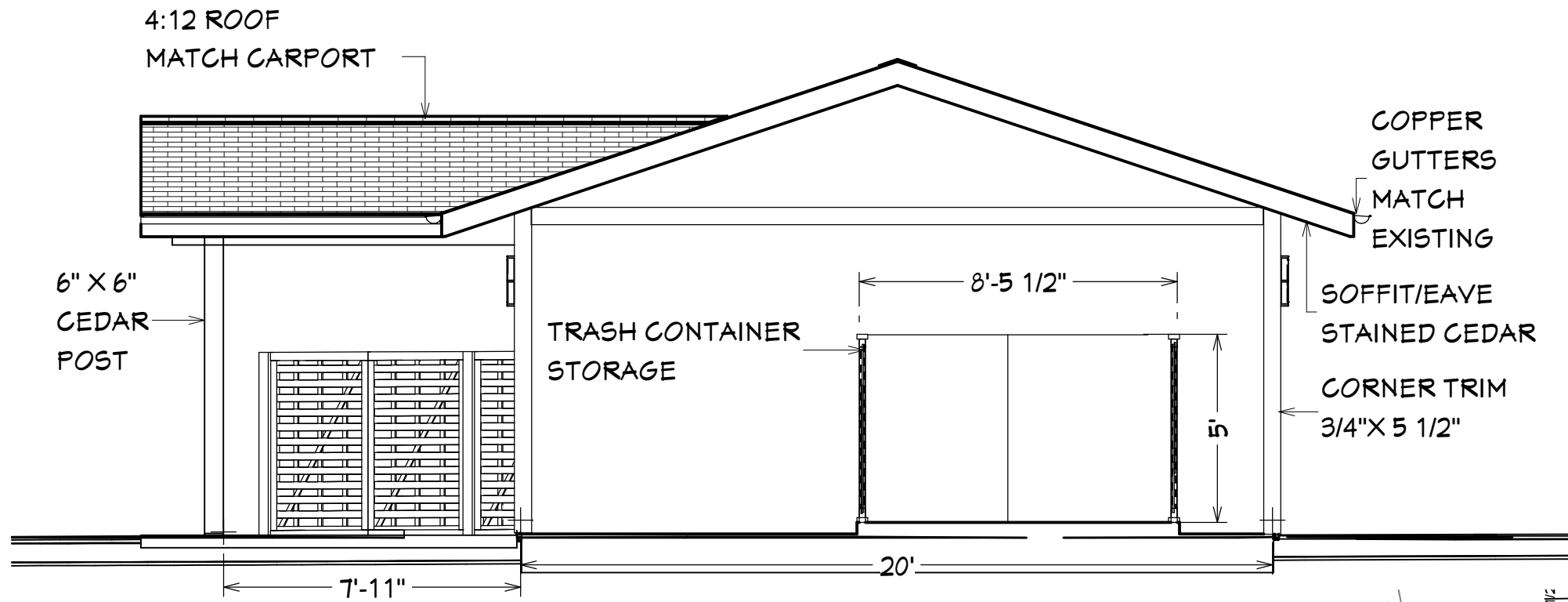
SHEET:

A-4

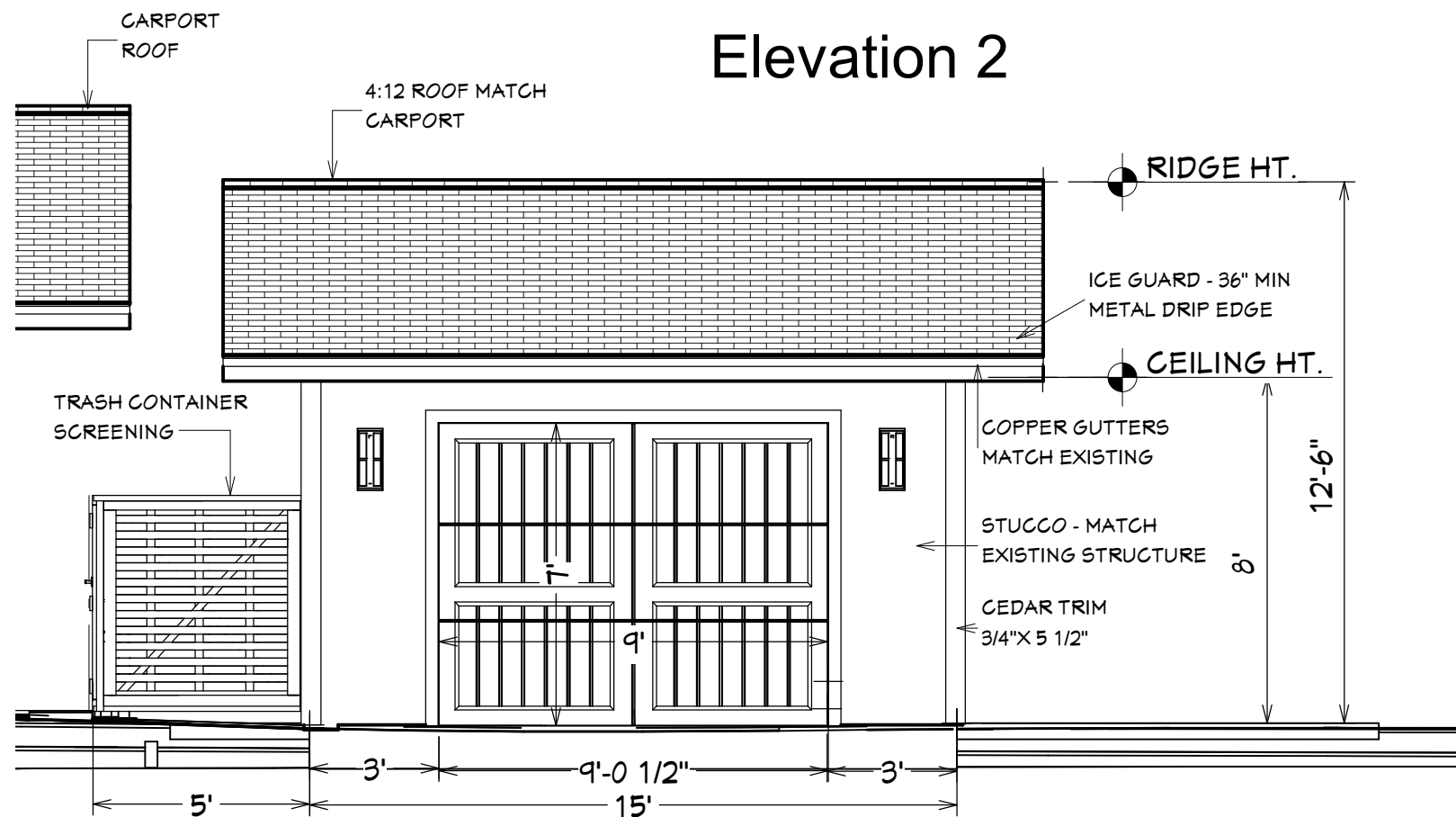
DRAWINGS PROVIDED BY:



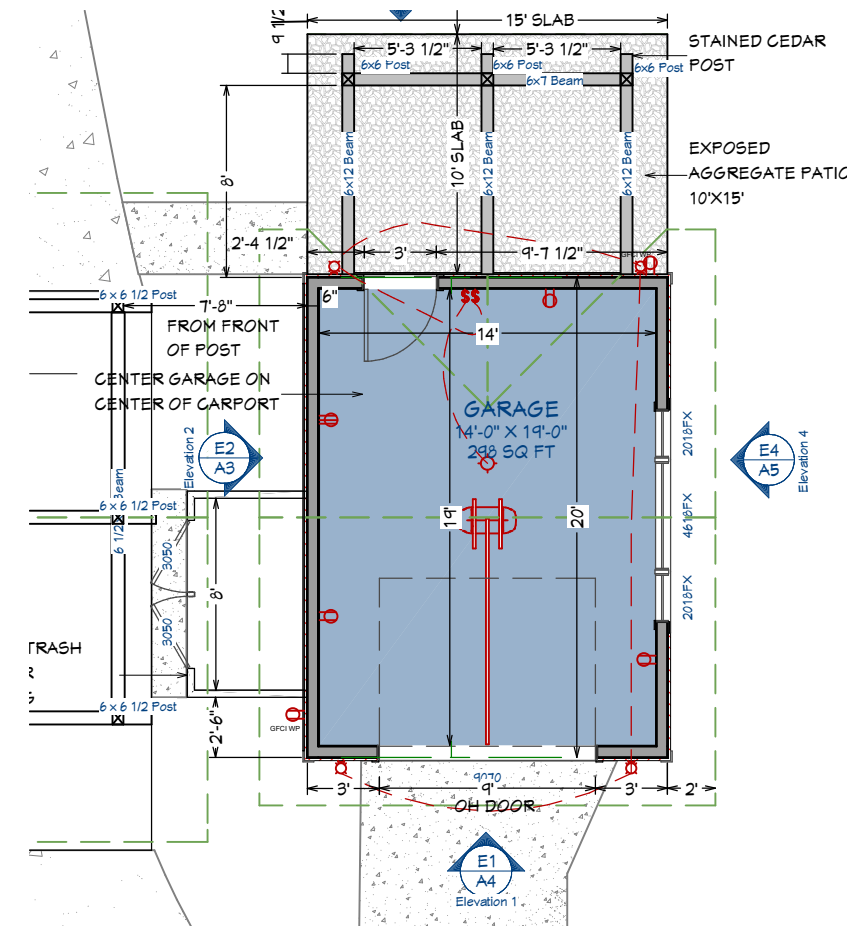
Tom Atkinson 313-744-3867
Detroit, MI 48221 561-400-3652
www.brushparkstudio.com
tom@brushparkstudio.com



Elevation 2



Elevation 1



Garage Plan View

PROJECT DESCRIPTION:

STEIN RESIDENCE
19331 CANTERBURY ROAD
DETROIT MI. 48221

SHEET TITLE:
STORAGE
BUILDING
ELEVATION

DATE:
11/18/2020

SCALE:
1/4"-1'-0"

SHEET:

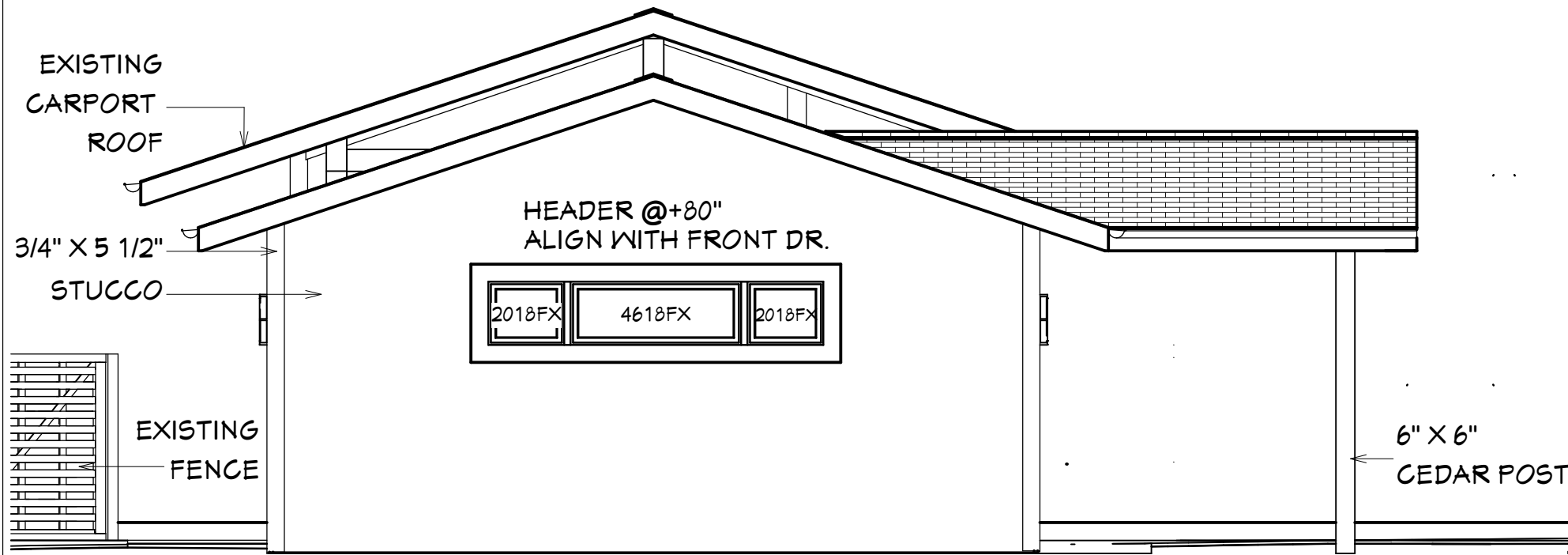
A-5

BRUSH PARK STUDIO ASSUMES NO RESPONSIBILITY FOR STRUCTURAL, ELECTRICAL, MECHANICAL, FIRE RATED ASSEMBLIES OR OTHER ARCHITECTURAL RELATED DESIGN ISSUES. BRUSH PARK STUDIO DRAWINGS AND SPECIFICATIONS REPRESENTS INFORMATION PERTAINING TO DESIGN INTENT ONLY.

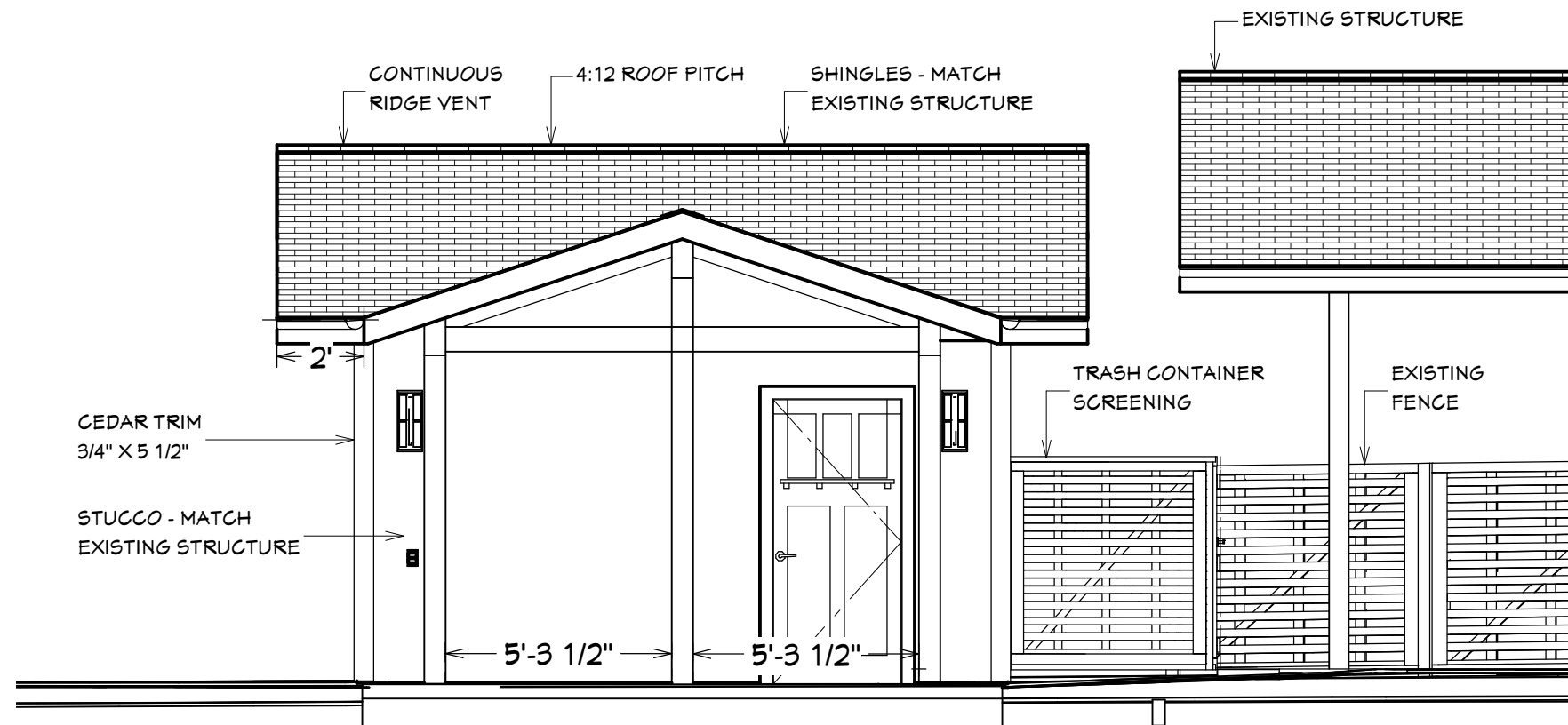
DRAWINGS PROVIDED BY:



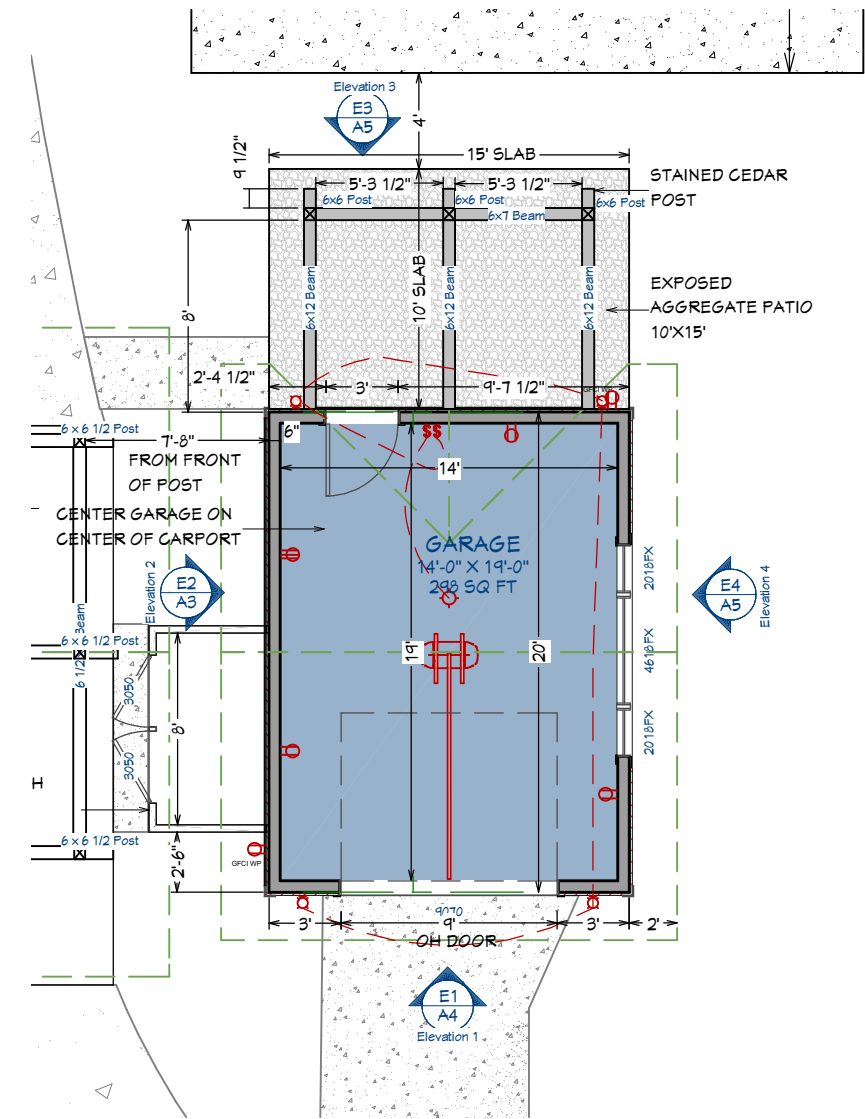
Tom Atkinson 313-744-3867
Detroit, MI 48221 561-400-3652
www.brushparkstudio.com
tom@brushparkstudio.com



Elevation 4



Elevation 3



Garage Plan View

BRUSH PARK STUDIO ASSUMES NO RESPONSIBILITY FOR STRUCTURAL, ELECTRICAL, MECHANICAL, FIRE RATED ASSEMBLIES OR OTHER ARCHITECTURAL RELATED DESIGN ISSUES. BRUSH PARK STUDIO DRAWINGS AND SPECIFICATIONS REPRESENTS INFORMATION PERTAINING TO DESIGN INTENT ONLY.

PROJECT DESCRIPTION:
STEIN RESIDENCE
19331 CANTERBURY ROAD
DETROIT MI. 48221

SHEET TITLE:
GARAGE
BUILDING
ELEVATION

DATE:
11/18/2020

SCALE:
1/4" = 1'-0"

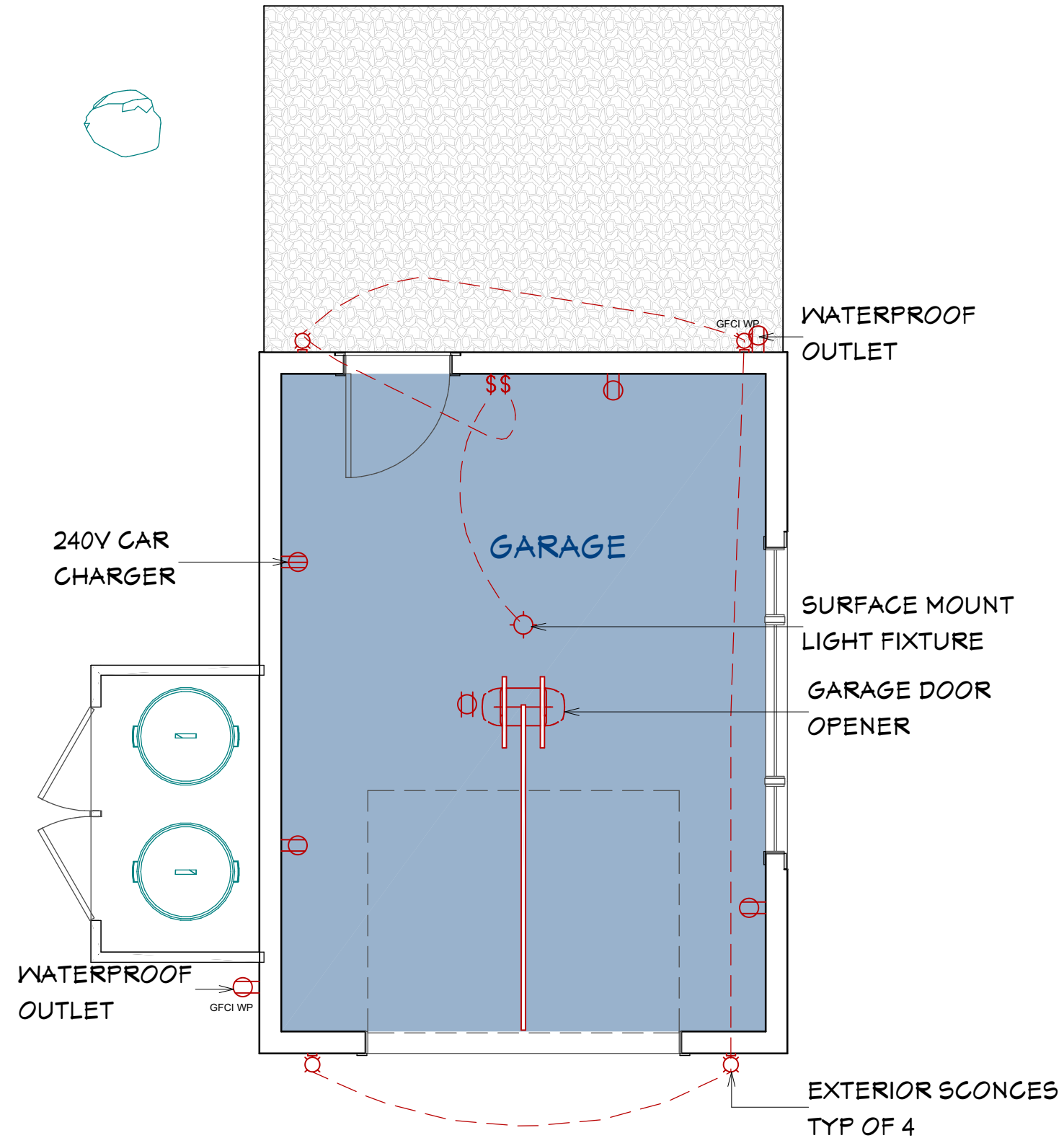
SHEET:

A-6

DRAWINGS PROVIDED BY:



Tom Atkinson 313-744-3867
Detroit, MI 48221 561-400-3652
www.brushparkstudio.com
tom@brushparkstudio.com



Electrical Plan

PROJECT DESCRIPTION:

STEIN RESIDENCE
19331 CANTERBURY ROAD
DETROIT MI. 48221

SHEET TITLE:

ELECTRICAL PLAN

DATE:

11/18/2020

SCALE:

1/4"-1'-0"

SHEET:

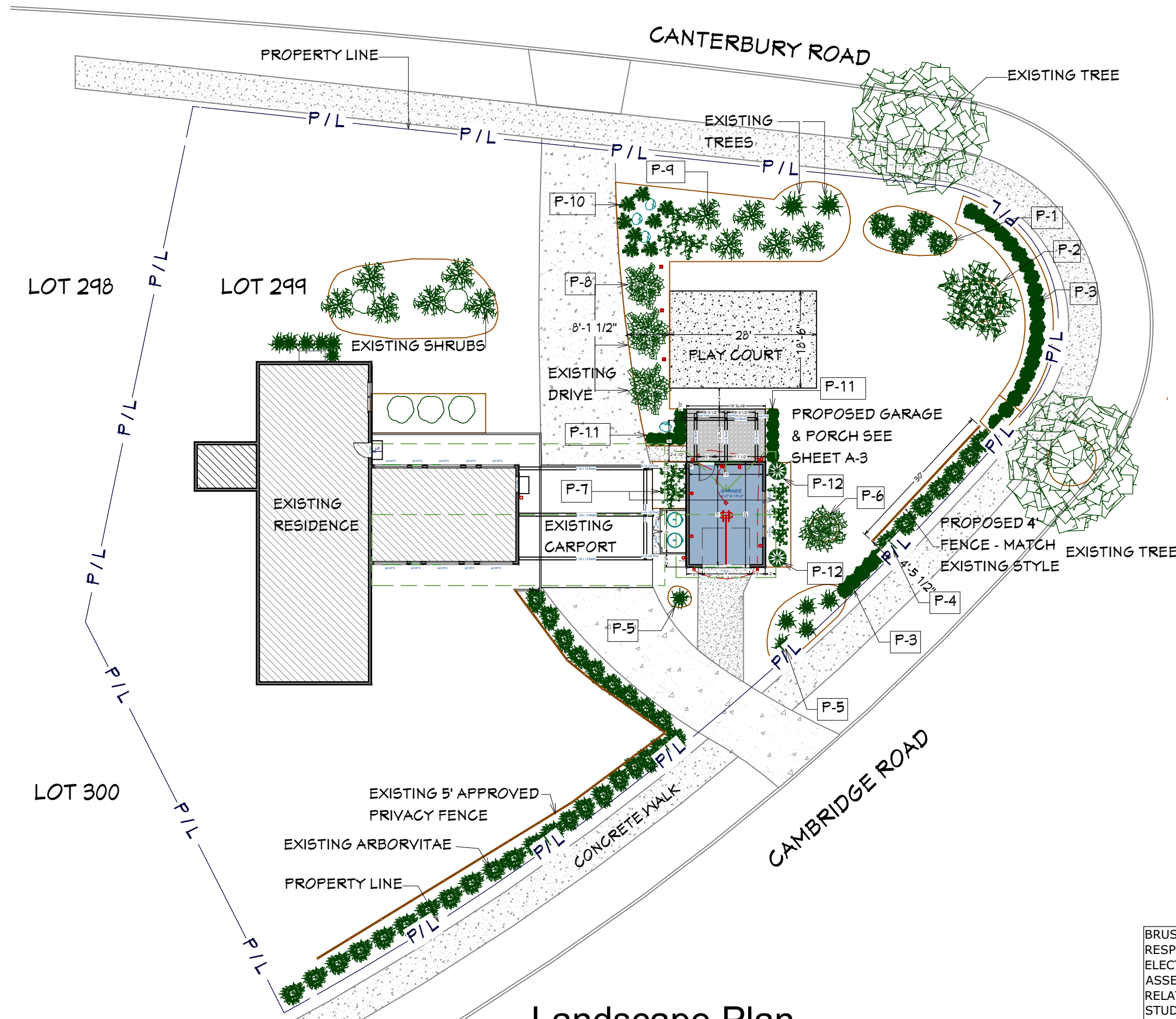
A-7

BRUSH PARK STUDIO ASSUMES NO RESPONSIBILITY FOR STRUCTURAL, ELECTRICAL, MECHANICAL, FIRE RATED ASSEMBLIES OR OTHER ARCHITECTURAL RELATED DESIGN ISSUES. BRUSH PARK STUDIO DRAWINGS AND SPECIFICATIONS REPRESENTS INFORMATION PERTAINING TO DESIGN INTENT ONLY.

DRAWINGS PROVIDED BY:



Tom Atkinson 313-744-3867
Detroit, MI 48221 561-400-3652
www.brushparkstudio.com
tom@brushparkstudio.com



PROJECT DESCRIPTION:
STEIN RESIDENCE
19331 CANTERBURY ROAD
DETROIT MI. 48221

SHEET TITLE:
LANDSCAPE PLAN

DATE:
11/18/2020

SCALE:
1/4"-1'-0"

SHEET:

A-8

BRUSH PARK STUDIO ASSUMES NO RESPONSIBILITY FOR STRUCTURAL, ELECTRICAL, MECHANICAL, FIRE RATED ASSEMBLIES OR OTHER ARCHITECTURAL RELATED DESIGN ISSUES. BRUSH PARK STUDIO DRAWINGS AND SPECIFICATIONS REPRESENTS INFORMATION PERTAINING TO DESIGN INTENT ONLY.

Landscape Plan

DRAWINGS PROVIDED BY:



Tom Atkinson 313-744-3867
Detroit, MI 48221 561-400-3652
www.brushparkstudio.com
tom@brushparkstudio.com



**STREET VIEW
INTERSECTION CAMBRIDGE / CANTERBURY**

PROJECT DESCRIPTION:

**STEIN RESIDENCE
19331 CANTERBURY ROAD
DETROIT MI. 48221**

SHEET TITLE:

**LANDSCAPE PLAN
OVERVIEWS**

DATE:

11/18/2020

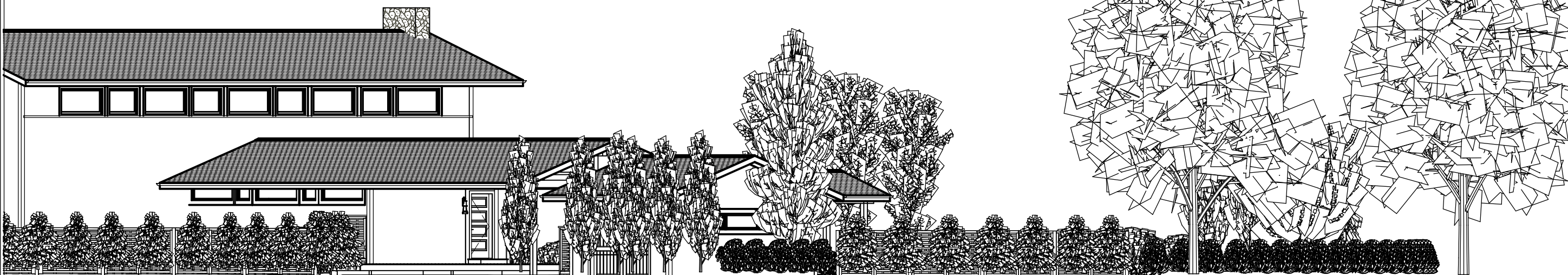
SCALE:

1/4"-1'-0"

SHEET:

A-9

BRUSH PARK STUDIO ASSUMES NO RESPONSIBILITY FOR STRUCTURAL, ELECTRICAL, MECHANICAL, FIRE RATED ASSEMBLIES OR OTHER ARCHITECTURAL RELATED DESIGN ISSUES. BRUSH PARK STUDIO DRAWINGS AND SPECIFICATIONS REPRESENTS INFORMATION PERTAINING TO DESIGN INTENT ONLY.



**STREET VIEW
CAMBRIDGE AVENUE**

DRAWINGS PROVIDED BY:

BRUSH PARK STUDIO
DISTINCTIVE DESIGNS FOR UNIQUE LIVING SPACES

Tom Atkinson 313-744-3867
Detroit, MI 48221 561-400-3652
www.brushparkstudio.com
tom@brushparkstudio.com

PLANT LIST

P1 - CYPRESS, NOOTKA, BLUE

Cypress, Nootka, Blue

[Sign in to add to your wish list.](#)



EVERGREEN

Chamaecyparis Nootkatensis 'glauca' Zone 5

- Shape: Broad, pyramidal habit
- Growth Rate: Moderate (6-12" per year)
- Fruit: Small tan colored cones in fall
- Foliage: Flat sprays to blue-green foliage with pendulous tips; retains good color through winter
- Soil: Requires moist, well-drained soils
- Great blue colored replacement option for Colorado Spruce
- Plant in areas protected from winter sun & wind
- Pendulous branch tips create a graceful appearance
- Also known as Alaskan Cedar

Features	Sun Exposure
Attractive Foliage	Full Sun
Evergreen	Part Sun/Part Shade

QTY - 3

P4 - ARBORVITAE, DARK GREEN

Arborvitae, Dark Green

[Sign in to add to your wish list.](#)



EVERGREEN

Thuja Occidentalis Nigra Zone 3

- Shape: Upright, pyramidal habit
- Growth Rate: Moderate-Fast (9-15" per year)
- Cones: Small tan colored cones in fall
- Foliage: Dark green fan-shaped foliage; retains good color through winter
- Soil: Does well in most conditions, prefers even moisture for best growth
- Provides excellent year-round evergreen color
- Use as a single specimen or in groupings
- Excellent for dense hedges and visual screens
- Variety native to Michigan

Features	Sun Exposure
Evergreen	Full Sun
Michigan Native	Privacy Hedge

QTY - T.B.D.

P7 - RHODODENDRON, PURPLE

Rhododendron, Largeleaf, Dandy Man® Purple

[Sign in to add to your wish list.](#)



BROADLEAF

Rhododendron 'lax2011' Pp26976 Zone 4

- Shape: Upright-rounded
- Growth Rate: Slow to moderate (4-8" per year)
- Flowers: Rich purple-lavender flowers in May, lasting 1-2 weeks
- Foliage: Rich green leaves all season; may retain a portion of its leaves through the winter
- Soil: Moist, well-drained, acidic (pH 4.5-6.0), high in organic matter, dislikes heavy clay
- Improved winter hardiness for northern areas
- Beautiful spring flower display
- Good for use as a specimen or in groupings
- Plant in areas protected from winter sun & wind

Features	Sun Exposure
Butterfly	Part Sun/Part Shade

QTY - 4

P2 - WHITE KOUSA DOGWOOD

Dogwood, Kousa, Chinese

[Sign in to add to your wish list.](#)



TREE

Cornus Kousa Chinensis Zone 4

- Shape: Spreading, horizontal habit with age
- Growth Rate: Slow to moderate (4-8" per year)
- Flowers: Creamy white star-shaped blossoms in June, long lasting
- Fruit: Pink-red, raspberry-like; food for wildlife
- Foliage: Green leaves turn reddish in fall
- Soil: Moist, well-drained, slightly acidic (pH 5.5-6.5), high in organic matter, dislikes clay
- Four season character; spring flowers, summer foliage, fall foliage and attractive fruit
- Exfoliating bark adds winter interest
- Tolerates a bit more sunlight and exposure than Flowering Dogwood

Features	Sun Exposure
Attractive Fall Color	Full Sun

QTY - 1

P5 - ARBORVITAE, EMERALD GREEN

Arborvitae, Emerald

[Sign in to add to your wish list.](#)



EVERGREEN

Thuja Occidentalis 'smaragd' Zone 4

- Shape: Narrow, pyramidal habit
- Growth Rate: Moderate (6-12" per year)
- Cones: Small tan colored cones in fall
- Foliage: Bright emerald-green fan-shaped foliage; retains good color through winter
- Soil: Does well in most conditions, prefers even moisture for best growth
- Provides excellent year-round evergreen color
- Use as a single specimen or in groupings
- Excellent for dense hedges and visual screens
- Arborvitae (White Cedar) is native to Michigan

Features	Sun Exposure
Evergreen	Full Sun
Michigan Native	Part Sun/Part Shade
Privacy Hedge	

QTY - 4

P8 - OAK, REGAL PRINCE



TREE

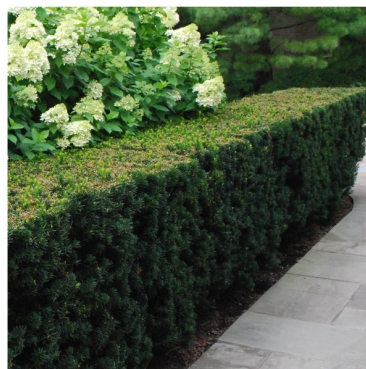
The Regal Prince is a vigorous Oak tree hybrid cross between Quercus robur fastigiata (Upright English Oak) and Quercus bi-color (Swamp White Oak). The foliage is green with silvery undersides. It tolerates a wide range of soil types wet and dry. It gets to be about 50' tall and only 20-25' wide. It does transplant with ease. This oak variety is an excellent, fast growing street tree or upright accent in the landscape. Hardiness zone 4

QTY - 3

P3 - HICKI YEW

Yew, Hick's

[Sign in to add to your wish list.](#)



EVERGREEN

Taxus X Media Hicksi Zone 4

- Shape: Dense upright habit with flat top
- Growth Rate: Slow to moderate (4-8" per year)
- Fruit: Small red berries in fall
- Foliage: Dark green soft textured needles; retains good color through winter
- Soil: Moist, well-drained, slightly acidic (pH 5.5-6.5), high in organic matter, dislikes clay
- Excellent for use as a specimen or in groupings
- Great for use in areas with limited sunlight
- Soft foliage is easy on the hands
- Easily pruned to maintain desired size and shape
- Avoid areas with deer browsing problems

Features	Sun Exposure
Evergreen	Full Shade
Privacy Hedge	Full Sun

QTY - T.B.D.

P6 - PINE, LIMBER, NORTHERN BLUE

Pine, Limber, Northern Blue

[Sign in to add to your wish list.](#)



EVERGREEN

Pinus Flexilis Northern Blue® Zone 4

- Shape: Pyramidal habit with upward angled branches
- Growth Rate: Moderate (6-12" per year)
- Foliage: Long, soft blue-green needles, with a slightly twisted appearance
- Cones: Light brown 3-6" long with white resin spots, occasionally produced
- Soil: Moist, well-drained, slightly acidic (pH 5.5-6.5)
- Attractive evergreen with blue-green needles, ideal for smaller landscapes
- More densely branched than Vanderwolf Pine
- Has a soft-textured appearance like a White Pine

Features	Sun Exposure
Attractive Foliage	Full Sun

QTY - 2

P9 - PINE, UMBRELLA, WINTER GREEN

Pine, Umbrella, Winter Green

[Sign in to add to your wish list.](#)



EVERGREEN

Sciadopitys Verticillata 'winter Green' Zone 5

- Shape: Broad upright habit
- Growth Rate: Moderate (4-8" per year)
- Foliage: Glossy, dark green waxy needles that are whorled around the twigs to create a very exotic look; retains good winter color
- Soil: Requires moist, well-drained, slightly acidic (pH 5.5-6.5), high in organic matter, dislikes heavy clay soils
- This very unique specimen evergreen has needles that look and feel like they are made of plastic
- A larger growing selection of Umbrella Pine
- Plant in areas protected from winter sun & wind
- Also known as Japanese Umbrella Pine

Features	Sun Exposure
Attractive Foliage	Full Sun

QTY - 5

P10 - JUNIPER, BLUE RUG

Juniper, Blue Rug

[Sign in to add to your wish list.](#)



EVERGREEN

Juniperus Horizontalis 'winter' Zone 3

- Shape: Low trailing habit
- Growth Rate: Slow to moderate (4-6" per year)
- Fruit: Small, grayish-blue berry-like cones in fall
- Foliage: Intense silvery-blue foliage; develops attractive purplish tones at the onset of cold weather and persists through winter
- Soil: Does well in most, tolerates drier conditions once established
- Ground hugging variety that forms a carpet-like habit as it matures
- Attractive as a single specimen or in groupings
- Prone to frost growth and promote fullness

Features	Sun Exposure
Attractive Foliage	Full Sun
Drought Tolerant	
Evergreen	
Foliage Colors	Height
Blue Foliage	4-6"
Green Foliage	
Silver/Grey Foliage	
Spread (Width)	5-6"

QTY - 5

P11 - BOXWOOD, GREEN MOUNTAIN

Boxwood, Green Mountain

[Sign in to add to your wish list.](#)



BROADLEAF

Buxus X Green Mountain Zone 4

- Shape: Dense, upright; may be pruned into pyramidal shape
- Growth Rate: Slow (3-6" per year)
- Foliage: Bright green leaves all season, turning bronze-green in winter
- Soil: Moist, well-drained, slightly acidic (pH 5.5-6.5), high in organic matter, dislikes heavy clay soils; needs to maintain good roots
- Low maintenance and deer resistant evergreen
- Great for use in hedges and foundation plantings
- Resistant pruning to maintain shape & size
- Plant in areas protected from winter sun & wind

Features	Sun Exposure
Attractive Foliage	Full Sun
Deer Resistant	Part Sun/Part Shade
Evergreen	
Foliage Colors	Height
Green Foliage	4-5"
Spread (Width)	2-3"

QTY - T.B.D.

P12 - CYPRESS, HINOKI COMPACT

Cypress, Hinoki, Compact

[Sign in to add to your wish list.](#)



EVERGREEN

Chamaecyparis Obtusa Compacta Zone 5

- Shape: Compact, twisted, pyramidal habit
- Growth Rate: Slow (2-4" per year)
- Foliage: Soft, dark green fan-shaped foliage; soft-textured growth appears to lie in horizontal layers along stems; retains good color through the winter
- Soil: Requires moist, well-drained conditions
- Unique specimen ideal for smaller areas
- Requires very little, if any pruning to develop its artistic form
- Plant in areas protected from winter sun & wind

Features	Sun Exposure
Attractive Foliage	Full Sun
Evergreen	Part Sun/Part Shade
Foliage Colors	Height
Green Foliage	8-8"
Spread (Width)	4-5"

QTY - T.B.D.

BRUSH PARK STUDIO ASSUMES NO RESPONSIBILITY FOR STRUCTURAL, ELECTRICAL, MECHANICAL, FIRE RATED ASSEMBLIES OR OTHER ARCHITECTURAL RELATED DESIGN ISSUES. BRUSH PARK STUDIO DRAWINGS AND SPECIFICATIONS REPRESENTS INFORMATION PERTAINING TO DESIGN INTENT ONLY.

PROJECT DESCRIPTION:

STEIN RESIDENCE
19331 CANTERBURY ROAD
DETROIT MI. 48221

SHEET TITLE:

PLANT SELECTIONS

DATE:

11/18/2020

SCALE:

1/4"-1'-0"

SHEET:

A-10