

Brush Park/City Modern A2 Secondary Facade

Proposed revision:

Original: Charcoal grey stained cedar planks (See next page for HDC palette)

Alternate: ATAS Metafor Metal Panels (Matte Black)



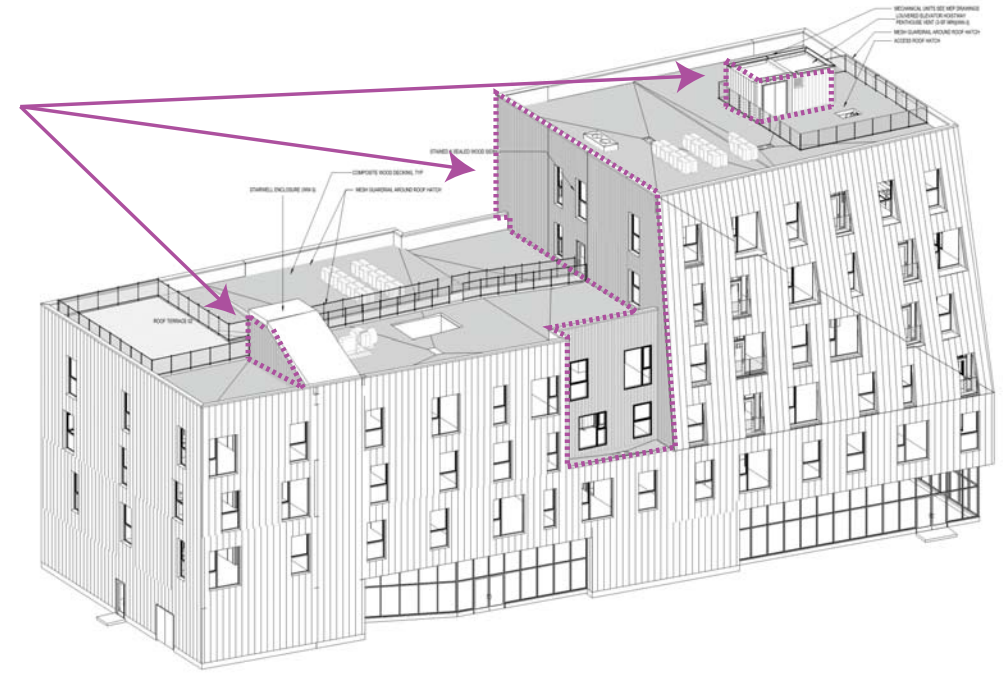
METAFOR

Metafor™ is a structural panel with a ribbed appearance and a concealed fastening system. The architectural ribbed panel has 4-up, 4-down ribs. The texture of the panel is either smooth or stucco embossed. Metafor™ may be installed horizontally or vertically. This panel is lightweight, but it also is strong. Metafor™ panels have the Wind-Lok® interlock which guards against wind-driven rain and wind uplift. This interlock also allows the Metafor™ panels to be combined with Corra-Lok™ and the Multi-Purpose™ system for the ability to create interesting patterns and breaks. It can be applied directly to solid decking or open framing. Typical applications for this panel are walls, ceilings, fascias, mansards, equipment screens and soffits. It may also be used for walkways, balconies, entrances and vestibules.

PANEL DETAILS:

Overview Interlock Perforated

Florida Building Product Approval: FL 30777.3



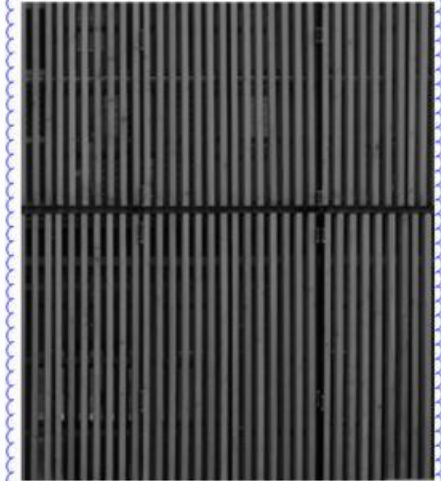
APARTMENT BUILDING_A-2_BUILDING MATERIAL PALETTE

PRIMARY CLADDING(S)



RED STANDING SEAM METAL

SECONDARY CLADDING(S)



CHARCOAL GREY STAINED CEDAR

WINDOW, DOOR, STOREFRONT



DARK ANODIZED ALUMINUM
WINDOWS + TYPICAL GLAZING



GREY STAINED CEDAR STOREFRONT
MULLIONS + TYPICAL GLAZING

RAILING, ACCENT, DETAILS



GREY STAINED CEDAR SCREEN



MESH GUARDRAIL

