

(20) SILFAB SOLAR SIL-320 BL MODULES
(4) PV LINKS OF 5 MODULES CONNECTED IN SERIES

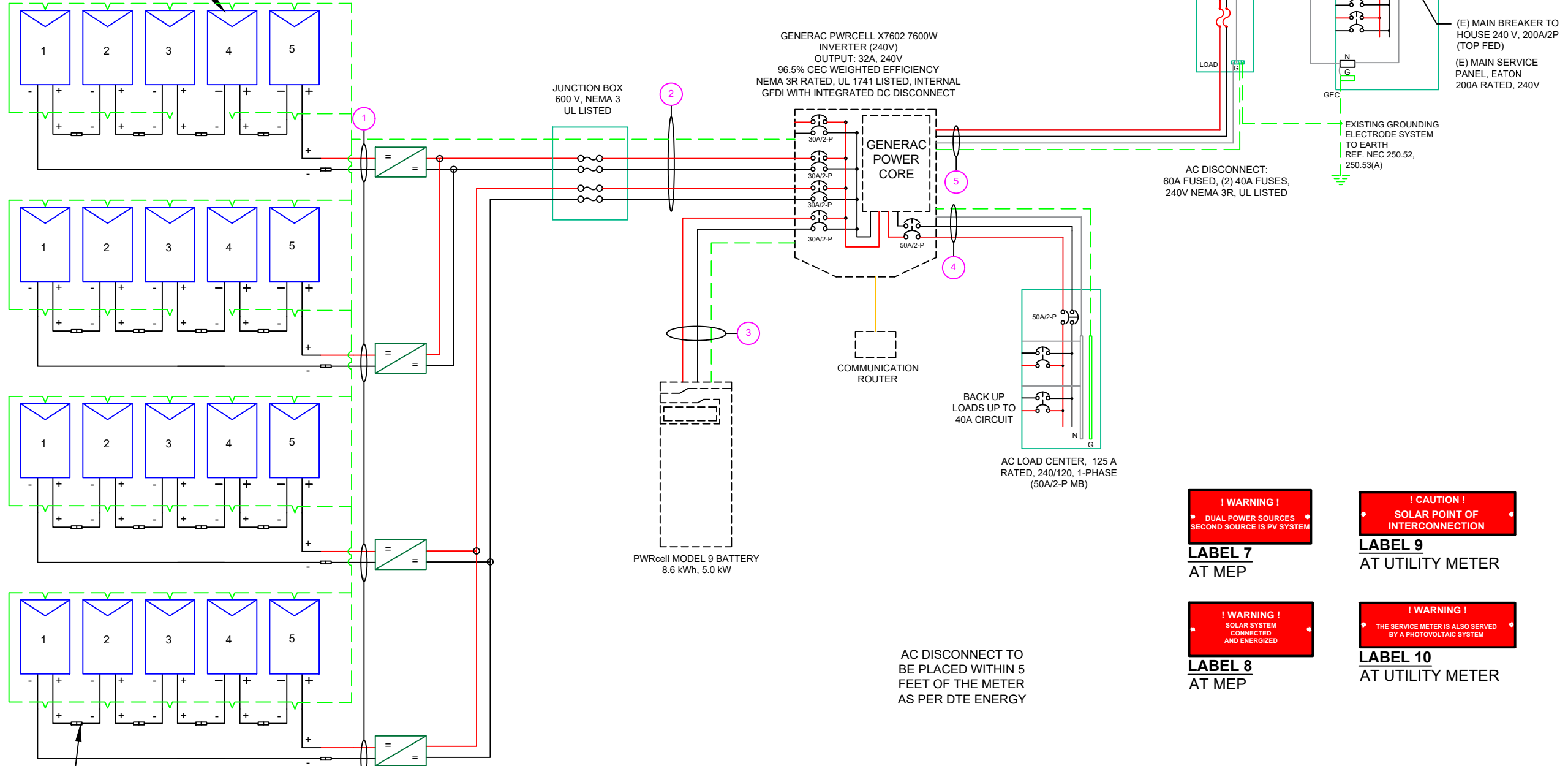
SERVICE INFO

UTILITY PROVIDER: DTE ENERGY
 MAIN SERVICE VOLTAGE: 240V
 MAIN PANEL BRAND: EATON
 MAIN SERVICE PANEL: 200A
 MAIN CIRCUIT BREAKER RATING: 200A
 MAIN SERVICE LOCATION: WEST
 SERVICE FEED SOURCE: OVERHEAD

WIRE LEGEND

- PV ARRAY +VE CONDUCTOR AND L1
- PV ARRAY -VE CONDUCTOR AND L2
- NEUTRAL CONDUCTOR
- EGC AND GEC
- SINGLE TWISTED PAIR, CAT 5 WIRE

SILFAB SOLAR SIL-320 BL MODULES

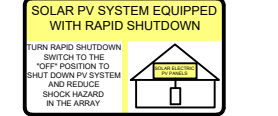


SNAP RS (RS801)
 MAX INPUT CURRENT - 13 A
 UL 1741 LISTED
 MODULE LEVEL RAPID SHUTDOWN (PVRSS)
 COMPLIANT
 NEMA 6P RATED

PVLINK SUBSTRING OPTIMIZER (S2502)
 RATED POWER : 2500W
 MPPT VOLTAGE RANGE: 60 TO 360 V
 MAX OUTPUT VOLTAGE: 420V
 MAX OUTPUT CURRENT: 8A
 RAPID SHUTDOWN COMPLIANT
 GROUND-FAULT PROTECTION COMPLIANT

! WARNING !
 PHOTOVOLTAIC POWER SOURCE

LABEL 1
 ON ALL CONDUITS SPACED AT MAX 10FT



LABEL 2
 AT INVERTER

! CAUTION !
 SOLAR ELECTRIC SYSTEM CONNECTED AND ENERGIZED

LABEL 3
 AT INVERTER

! PHOTOVOLTAIC DC DISCONNECT !

LABEL 4
 AT EACH DC DISCONNECT

! WARNING !
 ELECTRIC SHOCK HAZARD DO NOT TOUCH TERMINALS. TERMINALS ON BOTH LINE AND LOAD SIDES MAY BE ENERGIZED IN THE OPEN POSITION.

LABEL 5
 AT EACH AC DISCONNECT

! PHOTOVOLTAIC AC DISCONNECT !

LABEL 6
 AT EACH AC DISCONNECT

! WARNING !
 DUAL POWER SOURCES SECOND SOURCE IS PV SYSTEM

LABEL 7
 AT MEP

! CAUTION !
 SOLAR POINT OF INTERCONNECTION

LABEL 9
 AT UTILITY METER

! WARNING !
 SOLAR SYSTEM CONNECTED AND ENERGIZED

LABEL 8
 AT MEP

! WARNING !
 THE SERVICE METER IS ALSO SERVED BY A PHOTOVOLTAIC SYSTEM

LABEL 10
 AT UTILITY METER

| QTY | CONDUCTOR INFORMATION | CONDUIT TYPE | CONDUIT SIZE |
|-----|---------------------------------|----------------------|--------------|
| (8) | #10AWG - PV WIRE/USE-2 | N/A | N/A |
| (1) | #6AWG - BARE COPPER IN FREE AIR | | |
| (4) | #10AWG - THWN-2 | EMT OR FLEX IN ATTIC | 3/4" |
| (1) | #6AWG - THWN-2 GND | | |
| (2) | #10AWG - THWN-2 | EMT OR FLEX | 3/4" |
| (1) | #10AWG - THWN-2 GND | | |
| (3) | #6AWG - THWN-2 | EMT OR FLEX | 3/4" |
| (1) | #6AWG - THWN-2 GND | | |
| (3) | #6AWG - THWN-2 | EMT OR FLEX | 3/4" |
| (1) | #6AWG - THWN-2 GND | | |
| (3) | #6AWG - THWN-2 | EMT OR FLEX | 3/4" |



REVISIONS

| DESCRIPTION | DATE | REV |
|-------------|------|-----|
| | | |
| | | |
| | | |
| | | |

Signature with Seal

DATE: 9/10/2020

PROJECT NAME & ADDRESS

JERMEELE V WILSON
 RESIDENCE
 14621 WARWICK ST.,
 DETROIT, MI 48223

SHEET NAME
 ELECTRICAL LINE DIAGRAM

SHEET SIZE
 ANSI B
 11" X 17"

SHEET NUMBER
 PV-4