

PART 1:
Assessment of Deterioration from Window Repair Contractor +
Estimated Cost of Repair

Restoration Window Quote as Follows:

Company: Place Restoration Works
(Storms provided through Allied)

The following two pages represent an assessment of the current windows and the cost to restore them from Place Restoration Works.

Cost to restore 10 front and side windows, sashes only = \$14,920.20

Cost to include storms for energy efficiency = \$7,919.64

Total Cost for 10 Windows = \$22,839.84



Quote

Date: June 24, 2020
Valid Until: July 24, 2020
Quote #:
Customer ID: EO

Customer:

Eleanor Oakes
 869 Longfellow
 Detroit MI 48202
 908-501-5576

Quote/Project Description

*Full restoration of 20 sashes, 10 window frames inner stop to exterior blind stop
 *Wood sash repair as needed per initial visual inspection
 *inner stool repair/replace for opening 1E, 100' allowance new inner stops
 *Installed with restored original hardware, weatherstripping, all new sash cord
 *Certificate of Appropriateness from Historic District Commission

Description	Line Total
Wood Window Restoration -- Lead safe sash removal and transport; stop to stop frame restoration to include minor wood repair, stripping/priming/painting of window frames; Sash restoration to include minor wood repairs, glass conservation stripping/priming/painting, reglazing with Sarco linseed oil putty; Reinstallation of sashes with original weatherstripping if existing/functional or new spring bronze type, new Samson "Red Spot" sash cord, restored pulleys and window hardware where existing.	\$12,600.00
Additional Carpentry as noted on initial walkthrough -- sash 1HU meeting rail repair, 1HL left stile repair, 1DL left stile dutchman repair, 1DU left stile replacement, opening 1E inner stool repair or replace, 1FU meeting rail right corner repair, 1FL lower rail left corner repair, 1GU meeting rail right corner, 2EL bottom rail left corner	\$975.00
New glass for 2CL to replace existing plexiglass	\$40.00
Allowance for 100' of new matching inner stop molding if needed, openings 1B, 1E, 1F, and 1G	\$200.00

Subtotal	\$13,815.00
Project Management (8%)	\$1,105.20
Grand Total	\$14,920.20

Special Notes and Instructions

*excessive hidden damage not noted above may need to be assessed with a change order quoted as Time + Materials *client to provide paint/stain colors to match *payment schedule #1 deposit 10% to schedule, #2 -40% at start, #3 -40% at start of installation, #4 -final 10% at completion of install/punchlist.

Above information is not an invoice and only an estimate of services/goods described above.

A payment schedule will be established prior to final quote.

Please confirm your acceptance of this quote by signing this document Signature _____

Print Name _____

Date _____

If you have any questions concerning this quote, contact Phil Mayo at 773.972.7712 or Kyle Vanover at 734.934.3226

Thank you!



Quote

Date: June 24, 2020
Valid Until: July 24, 2020
Quote #:
Customer ID: EO

Customer:

Eleanor Oakes
 869 Longfellow
 Detroit MI 48202
 908-501-5576

Quote/Project Description

*New Allied storm windows for 10 openings
 *Remove old aluminum storm windows where existing
 *Disposal of old storm windows as needed
 *Installation of new Allied storm windows
 *Certificate of Appropriateness from Historic District Commission

Description	Line Total
10 qty Allied storm windows, model HOL-OP, standard color, includes shipping to jobsite	\$5,583.00
Basic Installation for 10 storm windows on 1st and 2nd floor	\$1,750.00

Subtotal	\$7,333.00
Project Management (8%)	\$586.64
Grand Total	\$7,919.64

Special Notes and Instructions

*Payment schedule 1/3 deposit to order, 1/3 due prior to shipping, balance due upon completion.

Above information is not an invoice and only an estimate of services/goods described above.
 A payment schedule will be established prior to final quote.

Please confirm your acceptance of this quote by signing this document Signature
Print Name
Date

If you have any questions concerning this quote, contact Phil Mayo at 773.972.7712 or Kyle Vanover at 734.934.3226

Thank you!

**PART 2:
PICTURES OF WINDOWS TO BE REPLACED**

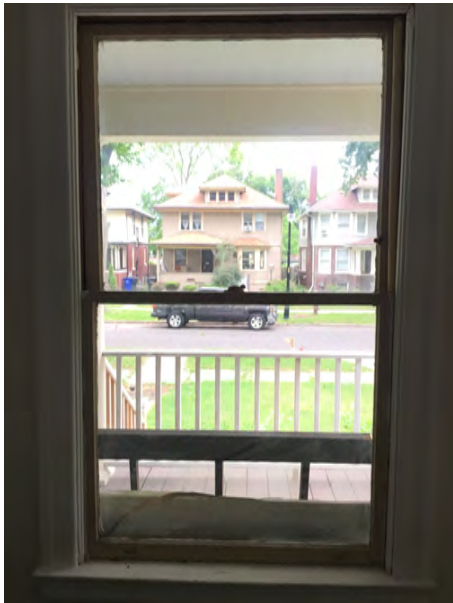
Reference Images



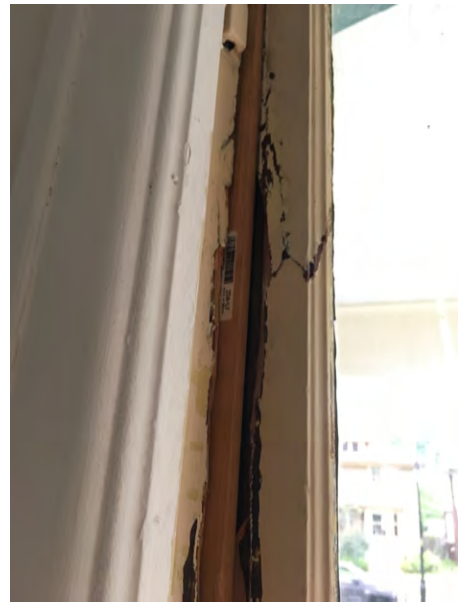
Window 1:



Window 2:



Window 3:



Window 4:



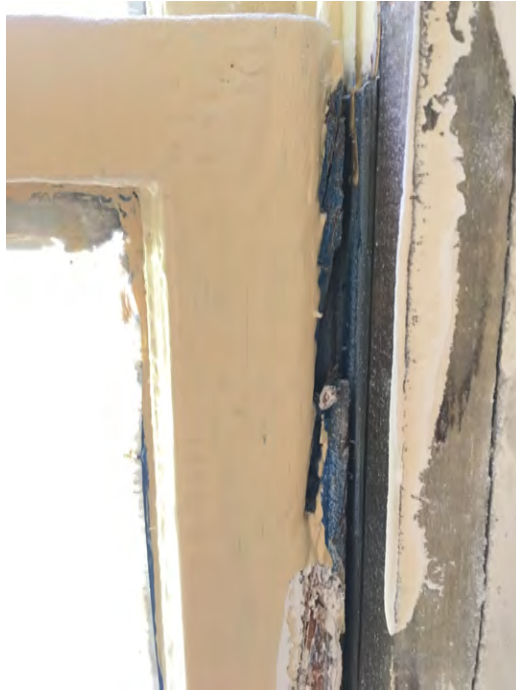
Window 5:



Window 6:



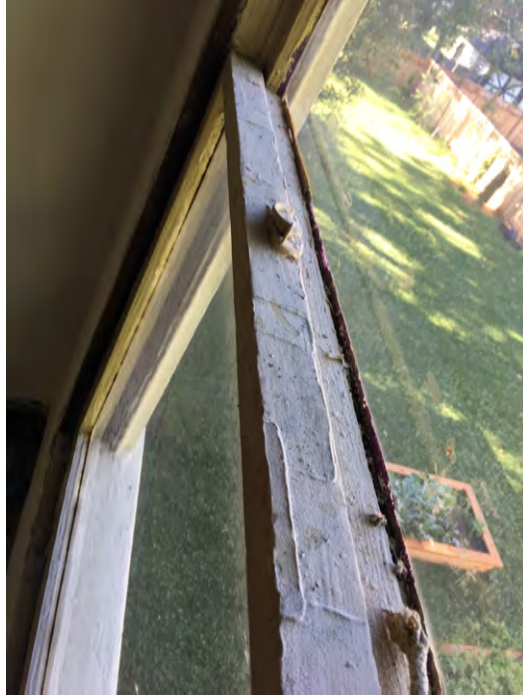
Window 7:



Window 8:



Window 10:



Window 9:



PART 3:

Comparison of Measurements:

****Please note, only sashes are to be replaced. Original trim will remain intact.****

Existing Windows:
Wood Double-Hung
Overall window size: 33" wide x 69" high
Glass pane size: 29" x 31" each

Proposed Windows:
Wood Double-Hung
Overall window size: 33" wide x 69" high
Glass pane size: 28" x 30" each



Profile Drawings + Specs:

See attached pages for profile drawings and elevation views.



Architect Series® Traditional Hung Window

Special Sizes and Dimensions

Special Size Frame Dimension¹

Sash configuration	Vent-equal	Cottage	Fixed
Sash Glass Ratio Top % : Bottom %	50 : 50	40 : 60	NA
Shortest Unit Frame Size	24-3/8" (889)	42-1/4" (1 073)	17" (432)
Tallest Unit Frame Size	96" (2 438)	81" (2 057)	71" (1 803)
Unit Frame Width Range	14" to 48" (533 to 1 219)	21" to 48" (533 to 1 219)	17" to 59" (432 to 1 499)

Opening Dimensions

Clad exterior units:
Dimensions shown in standard size tables are rough opening dimensions.

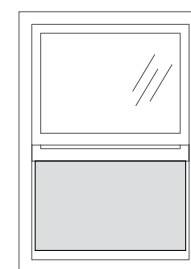
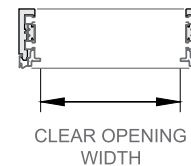
Wood exterior units:
Use frame dimension plus dimensions below. This dimension includes the use of standard 1-1/8" wood subsill.

Frame	Rough		Masonry	
	Width	Height	Width	Height
STD	+ 3/4"	+1-7/8"	+ 3-1/8"	+ 3-1/8"
3-1/2"	+ 3/4"	+1-7/8"	+ 6-3/8"	+ 4-3/4"

For clad and wood units with HurricaneShield® impact-resistant glass, see the product installation instructions or refer to local building code requirements.

Equal Sash Only

	Vent Units	Fixed and Transom Units
Visible Glass	Width = Frame - 5.75" Height ₂ = (Frame - 8.1875") ÷ 2	Width = Frame - 5.75" Height = Frame - 5.75"
Actual Glass	Width = Frame - 4.375" Height ₂ = (Frame - 5.5") ÷ 2	Width = Frame - 4.375" Height = Frame - 4.375"
Clear Opening*	COV = Frame Width - 3.4375" COH = (Frame Height ÷ 2) - 4.4375"	—
Vent Area Ft ²	(COV x COH) ÷ 144	—



Shaded portion shows vent area.

(1) Available within size range shown.

(2) Per sash.

* Some units with custom glazing may have limited travel.

See your local Pella sales representative for specific size information.

**FRONT VIEW ELEVATION
with glass sizes**

**5. 2 panes
@ 29 x 27"**

**5. 2 panes
@ 35 x 27"**

**5. 2 panes
@ 29 x 27"**

**4. 2 panes
@ 43 x 27"**



**1. 2 panes
@ 29x31"**

**3. 2 panes
@ 35x31"**

**3. 2 panes
@ 29x31"**

**4. 2 panes
@ 43 x 31"**

SIDE VIEW ELEVATION

10. 2 panes
@ 29x27"



9. 2 panes
@ 29x31"