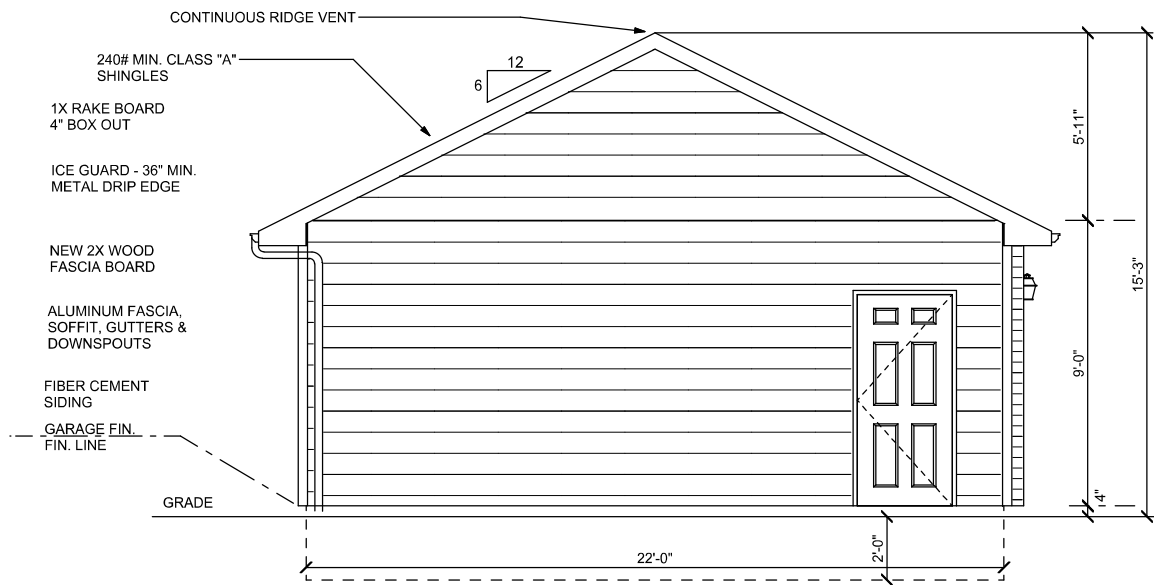


SCALE: 1/4" = 1'-0"

FOUNDATION PLAN



WEST ELEVATION

SCALE: 1/4" = 1'-0"

1980 Edison St.
Detroit, MI 48206

SCALE SCALE: 1/4" = 1'-0"

DRAWN BY RJW

APPROVED

DATE

REVISED

DRAWING# 2