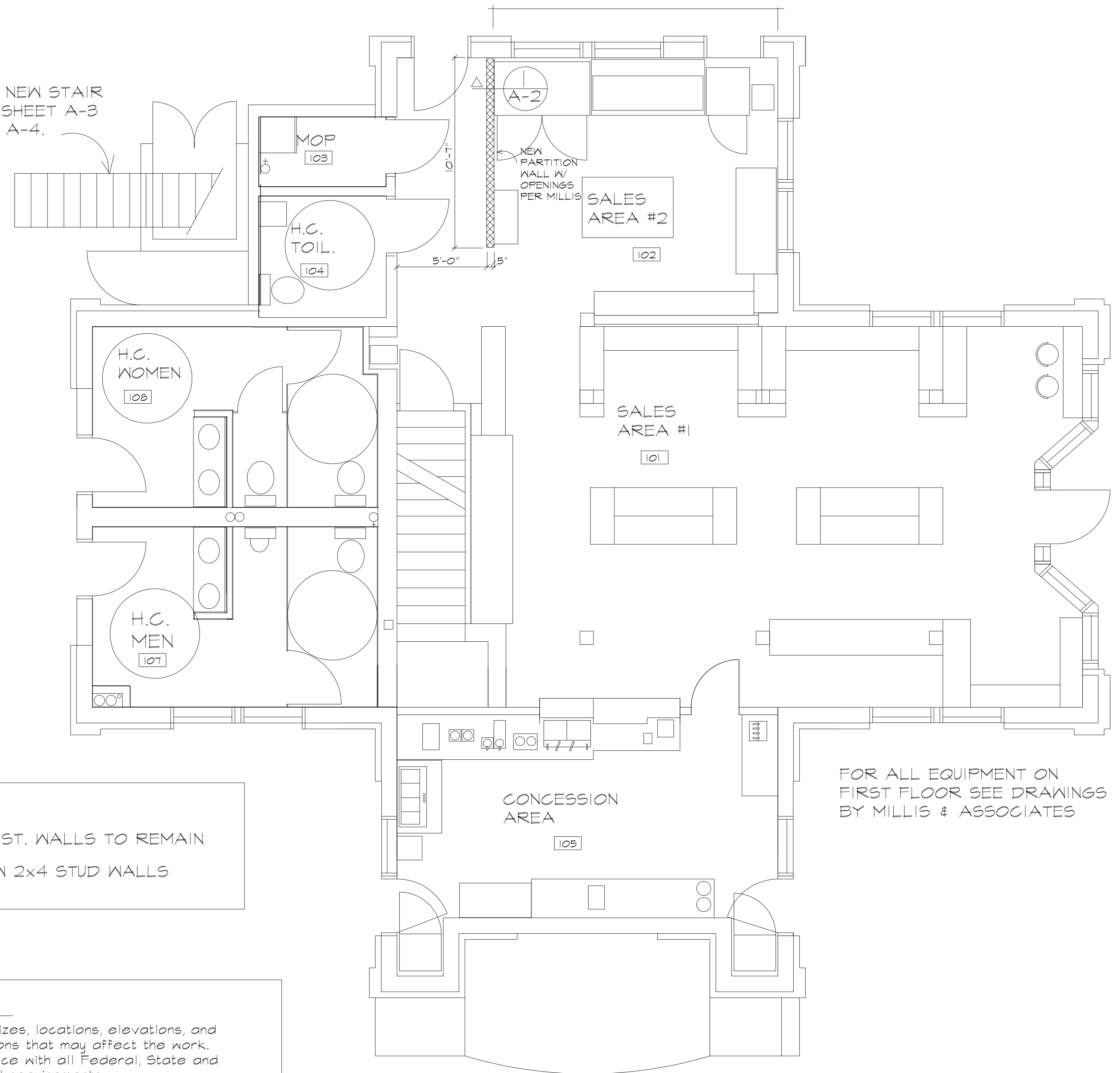


BASEMENT PLAN
SCALE: 1/4"=1'-0"

FOR NEW STAIR
SEE SHEET A-3
AND A-4.



1ST. FLOOR PLAN
SCALE: 1/4"=1'-0"

LEGEND

— EXIST. WALLS TO REMAIN

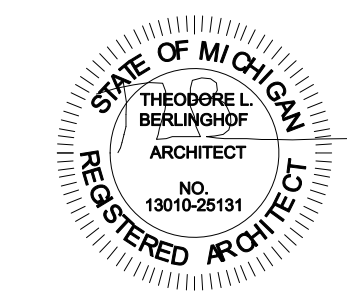
▨ NEW 2x4 STUD WALLS

- GENERAL NOTES**
- Contractor shall field verify sizes, locations, elevations, and details of all existing conditions that may affect the work.
 - All work shall be in accordance with all Federal, State and Local, Codes, Ordinances and requirements.
 - Contractor and Subcontractors shall be licensed as required by law in the performance of their work.
 - Should existing conditions other than those indicated on the drawings be encountered, the Architect shall be notified immediately in writing.
 - The Architect will not have control, or charge of, and will not be responsible for construction means, methods, techniques, sequences, or procedures, or for the safety precautions and programs in connection with the work.
 - All interior finishes to have a flame rating of less than 200 and a smoke density of less than 450.
 - Provide portable Fire Extinguishers for all areas per NFPA Standard #101.
 - The Equipment Contractor shall be responsible for coordination of all plumbing and electrical work at the project.

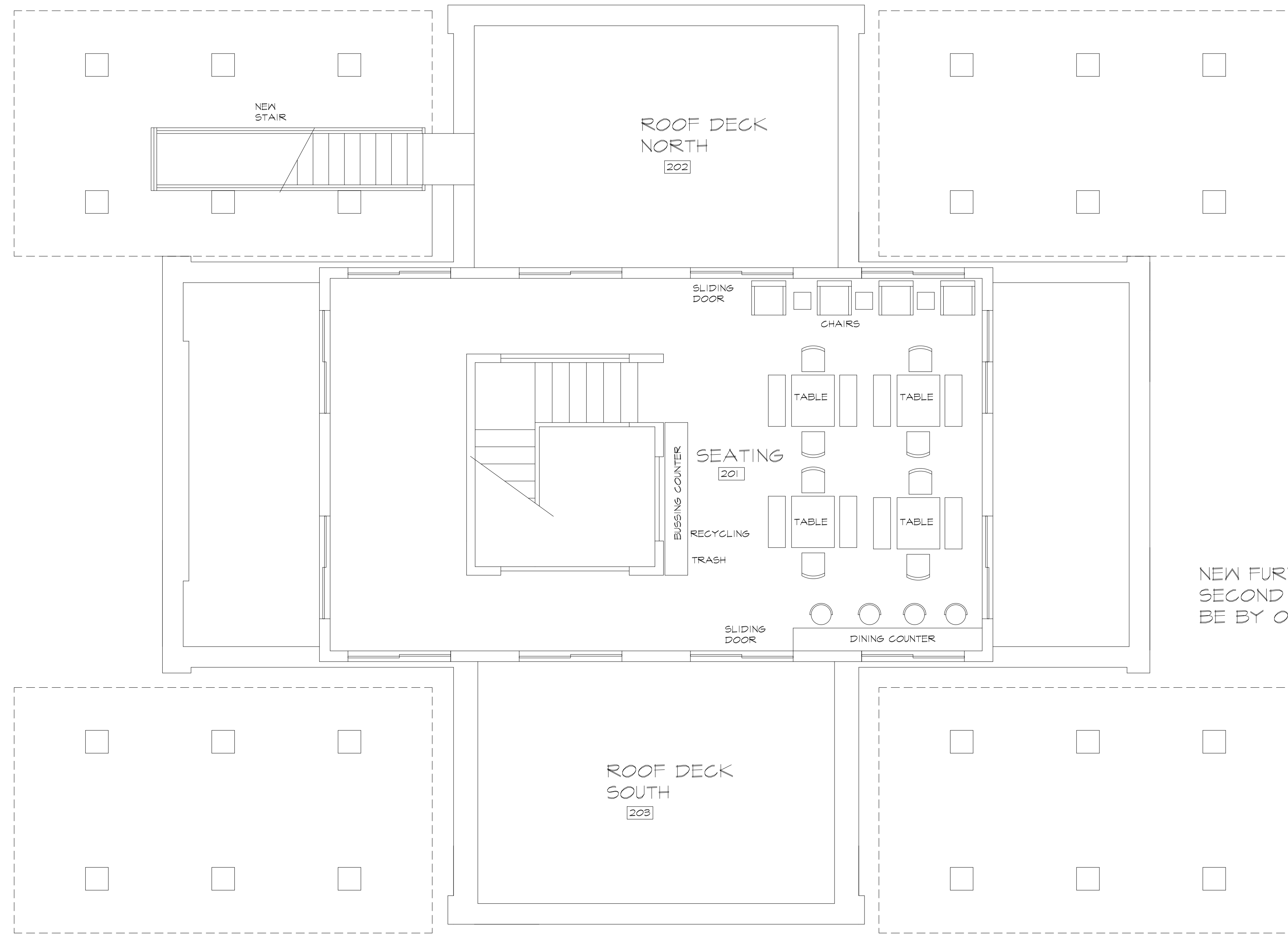
6-4-20	FOR PERMIT			
4-6-20	OWNER REVIEW			
DATE	ISSUE FOR	DATE	BY	BULLETIN
				REVISIONS

SEASONS MARKET
4125 SECOND AVENUE
DETROIT, MI 48201

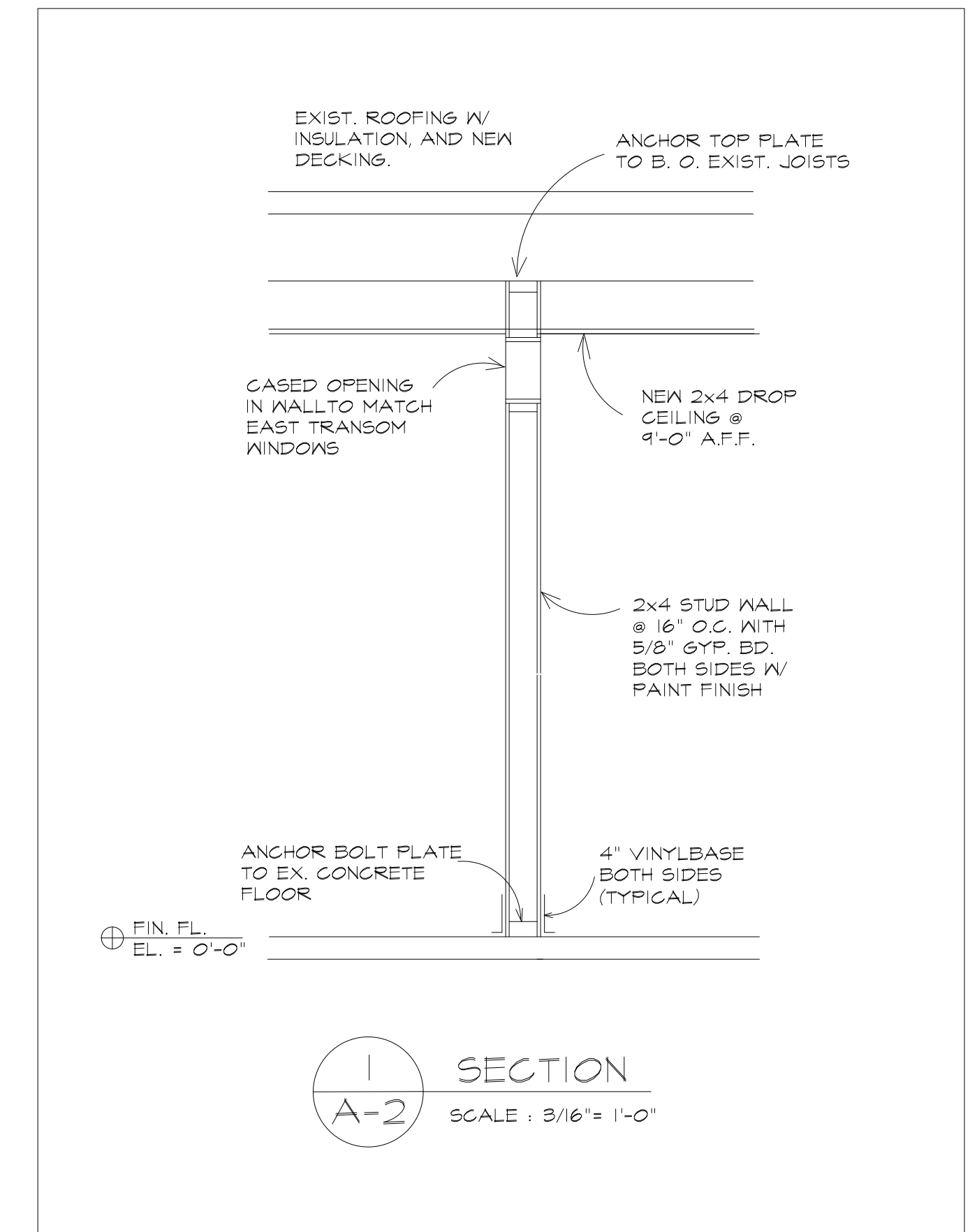
Architects Planners Engineers
ARCHITECTS INTERNATIONAL INC.
17400 Wildemere
Detroit, Michigan 48221
Phone: 313-341-7930
Fax: 313-341-6944



DESIGNED TLB	CHECKED TLB	PROJECT NO.
DRAWN TLB	DATE 4-6-20	2003
APPROVED TLB		
SHEET TITLE		SHEET NO.
BSMT. & 1ST. FL. PLANS		A-1



NEW FURNITURE ON SECOND FLOOR TO BE BY OTHERS



2ND. FL. PLAN
SCALE: 1/4" = 1'-0"

ROOM FINISH SCHEDULE

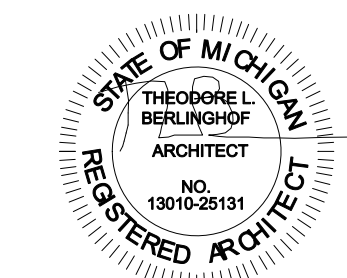
ROOM NUMBER	ROOM NAME	BASE		FLOOR		WALLS						CEILING		REMARKS		
		MAT'L	FIN	MAT'L	FIN	NORTH	EAST	SOUTH	WEST	MATERIAL	FIN					
B-1	BASEMENT	VIN.	F.F.		SEAL	HARDIE	W. PT.	HARDIE	W.P.T.	HARDIE	W.P.T.	HARDIE	W.P.T.	GYP. BD.	W.P.T.	
B-2	MECH. ROOM			CONC.	SEAL	HARDIE	UNPT.	GYP.BD.	PRIME	HARDIE	UNPT.	HARDIE	UNPT.	GYP. BD.	PRIME	
101	SALES AREA #1	WD.	STN.	WD.	STN.	GYP.BD.	PT.	GYP.BD.	PT.	GYP.BD.	PT.	GYP.BD.	PT.	GYP. BD.	PT.	
102	SALES AREA #2	WD.	STN.	CONC.	SEAL	GYP.BD.	PT.	GYP.BD.	PT.	GYP.BD.	PT.	GYP.BD.	PT.	GYP. BD.	PT.	
103	MOP ROOM	CER.	F.F.	CONC.	SEAL	GYP.BD.	PT.	GYP.BD.	PT.	GYP.BD.	PT.	GYP.BD.	PT.	GYP. BD.	PT.	
104	INTERIOR TOILET	CER.	F.F.	CER.	F.F.	GYP.BD.	PT.	GYP.BD.	PT.	GYP.BD.	PT.	GYP.BD.	PT.	GYP. BD.	PT.	NORTH, SOUTH, EAST WALLS CER.TD 42" A.F.F.
105	CONCESSION AREA	CER.	F.F.	CONC.	SEAL	GYP.BD.	W. PT.	GYP.BD.	W.P.T.	GYP.BD.	W.P.T.	GYP.BD.	W.P.T.	GYP. BD.	W.P.T.	
107	H.C. MEN	CER.	F.F.	CER.	F.F.	GYP.BD.	PT.	GYP.BD.	PT.	GYP.BD.	PT.	GYP.BD.	PT.	GYP. BD.	PT.	
108	H.C. WOMEN	CER.	F.F.	CER.	F.F.	GYP.BD.	PT.	GYP.BD.	PT.	GYP.BD.	PT.	GYP.BD.	PT.	GYP. BD.	PT.	
201	SEATING AREA	WD.	STN.	WD.	STN.	GYP.BD.	PT.	GYP.BD.	PT.	GYP.BD.	PT.	GYP.BD.	PT.	GYP. BD.	PT.	
202	ROOF DECK N.			TIMBERTECH	F.F.											
203	ROOF DECK S.			TIMBERTECH	F.F.											

FINISH NOTES:
 CER. TILE=CERAMIC TILE, F.F.= FACTORY FINISH, CONDC.= CONCRETE, VIN.=VINYL BASE, BLOCK=CONCRETE BLOCK, GYP. BD.=GYPSUM BOARD, PT.=PAINT FINISH, STN.+ STAIN & SEAL, WOOD= 1x6 WOOD BASE (FCS CERT),
 HARDIE= HARDIE PANELS, BRICK= COMMON BRICK, RAIL= 36" METAL RAILING, UNFIN= UNFINISHED/NATURAL, SEALER= WASHABLE CONDC. SEALER, W.P.T.= GLOSS PAINT WASHABLE

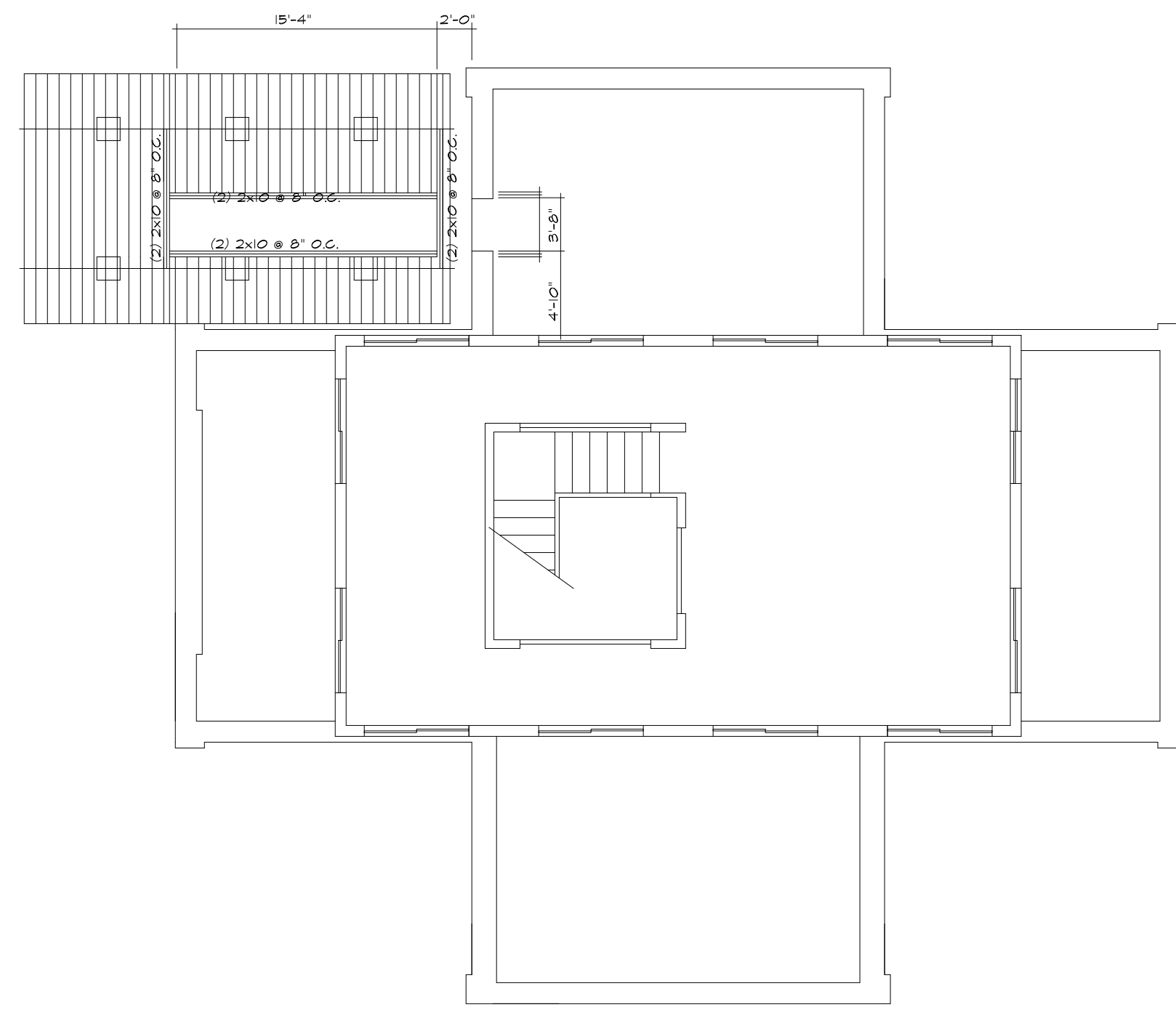
6-4-20	FOR PERMIT			
4-6-20	OWNER REVIEW	DATE	BY	BULLETIN
DATE	ISSUE FOR	REVISIONS		

SEASONS MARKET
 4125 SECOND AVENUE
 DETROIT, MI 48201

Architects Planners Engineers
 ARCHITECTS INTERNATIONAL, INC.
 17400 Wildemere
 Detroit, Michigan 48221
 Phone: 313-341-7930
 Fax: 313-341-6944



DESIGNED TLB	CHECKED TLB	PROJECT NO.
DRAWN TLB	DATE 4-6-20	2003
APPROVED TLB		
SHEET TITLE		SHEET NO.
2ND. FLOOR PLAN		A-2



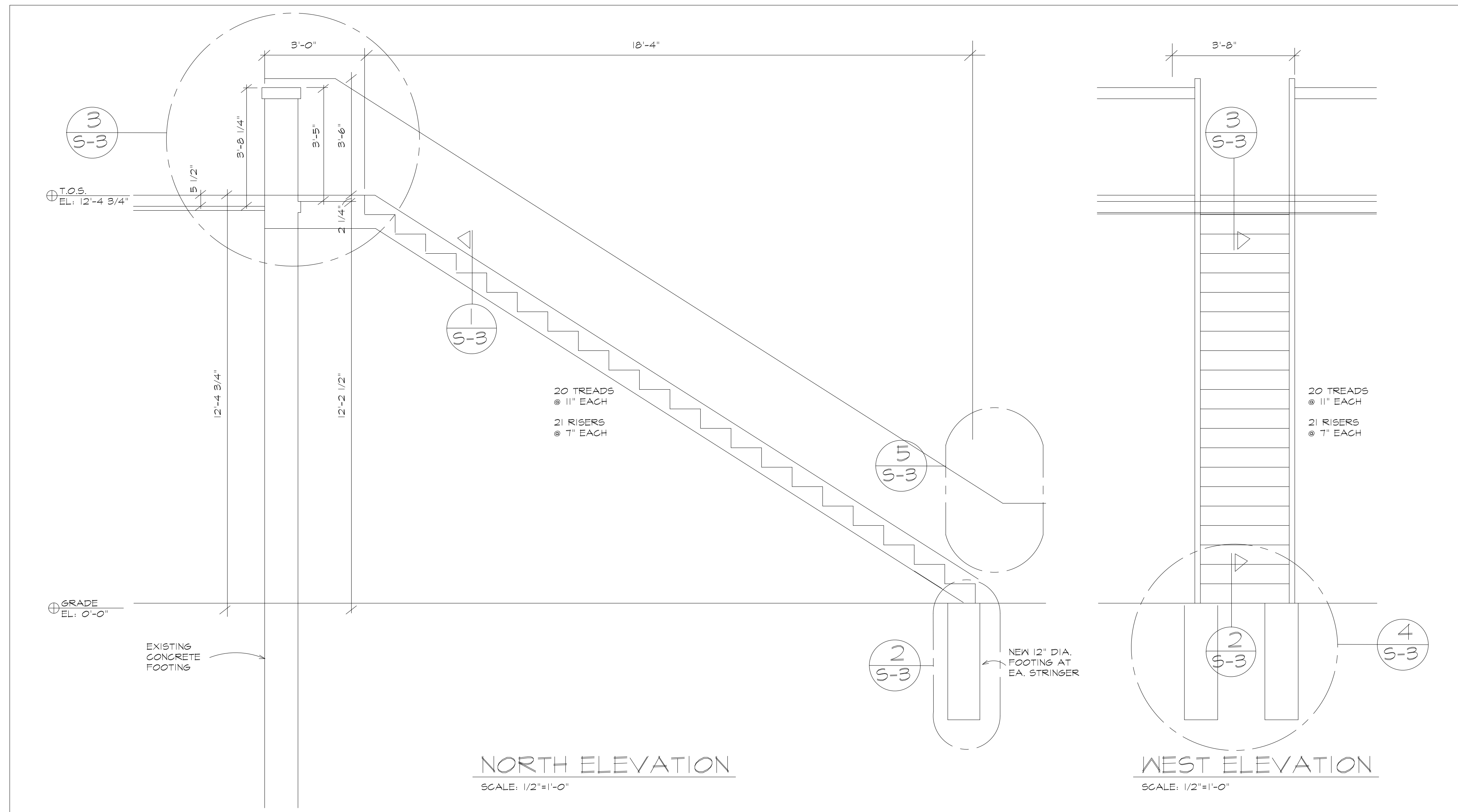
ROOF PLAN
SCALE: 1/8"=1'-0"



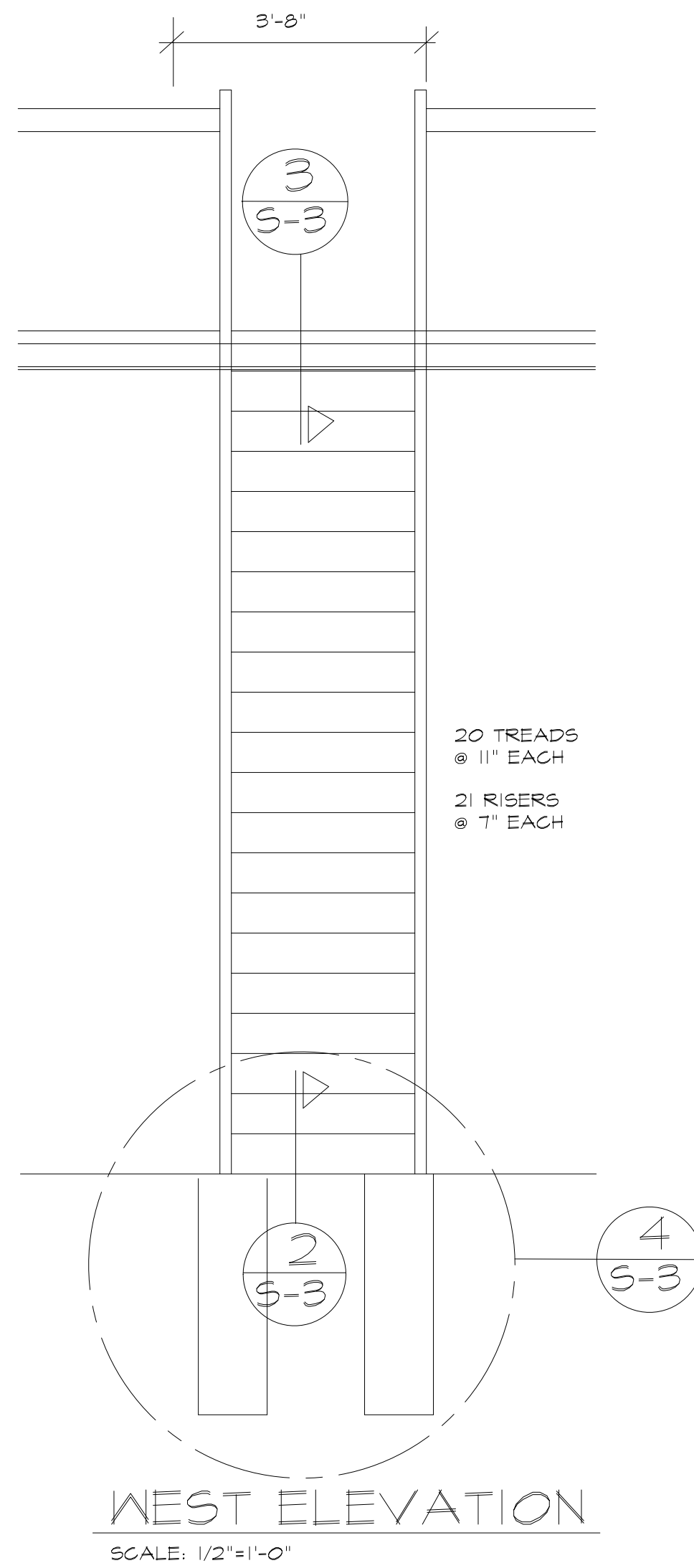
NORTH ELEVATION
SCALE: 1/8"=1'-0"



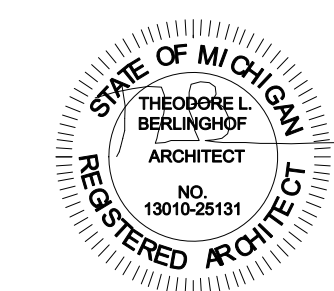
WEST ELEVATION
SCALE: 1/8"=1'-0"



NORTH ELEVATION
SCALE: 1/2"=1'-0"



WEST ELEVATION
SCALE: 1/2"=1'-0"



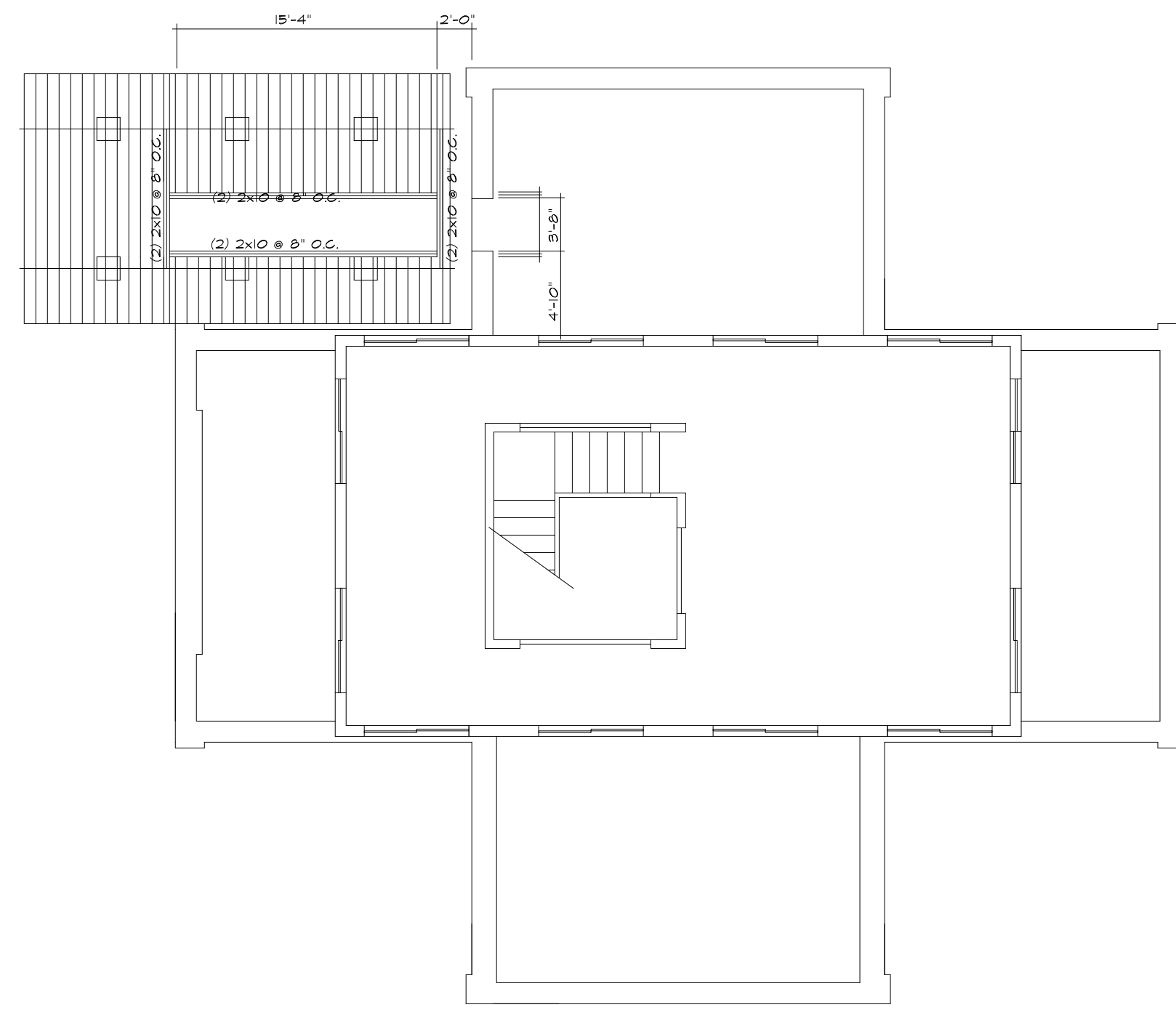
6-4-20	FOR PERMIT			
3-10-20	OWNER REVIEW	DATE	BY	BULLETIN
	ISSUE FOR			REVISIONS

SEASONS MARKET
4125 SECOND AVENUE
DETROIT, MI 48201

Architects Planners Engineers
ARCHITECTS INTERNATIONAL INC.
17400 Wildemere
Detroit, Michigan 48221
Phone: 313-341-7930
Fax: 313-341-6944

DESIGNED TLB	CHECKED TLB	PROJECT NO.
DRAWN TLB	DATE 3-6-20	2003
APPROVED TLB		
SHEET TITLE		SHEET NO.

NEW EXTERIOR STAIR PLAN A-3



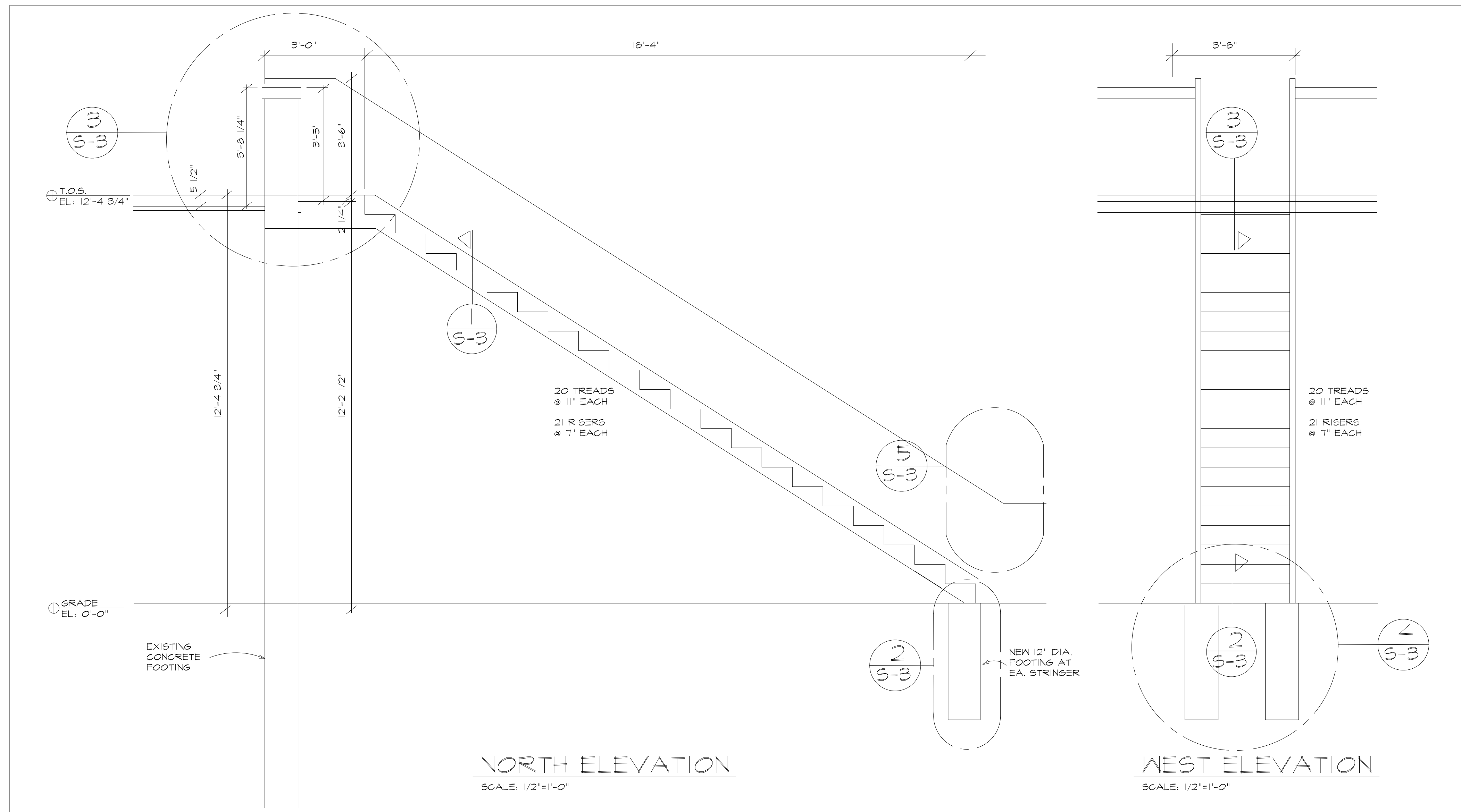
ROOF PLAN
SCALE: 1/8"=1'-0"



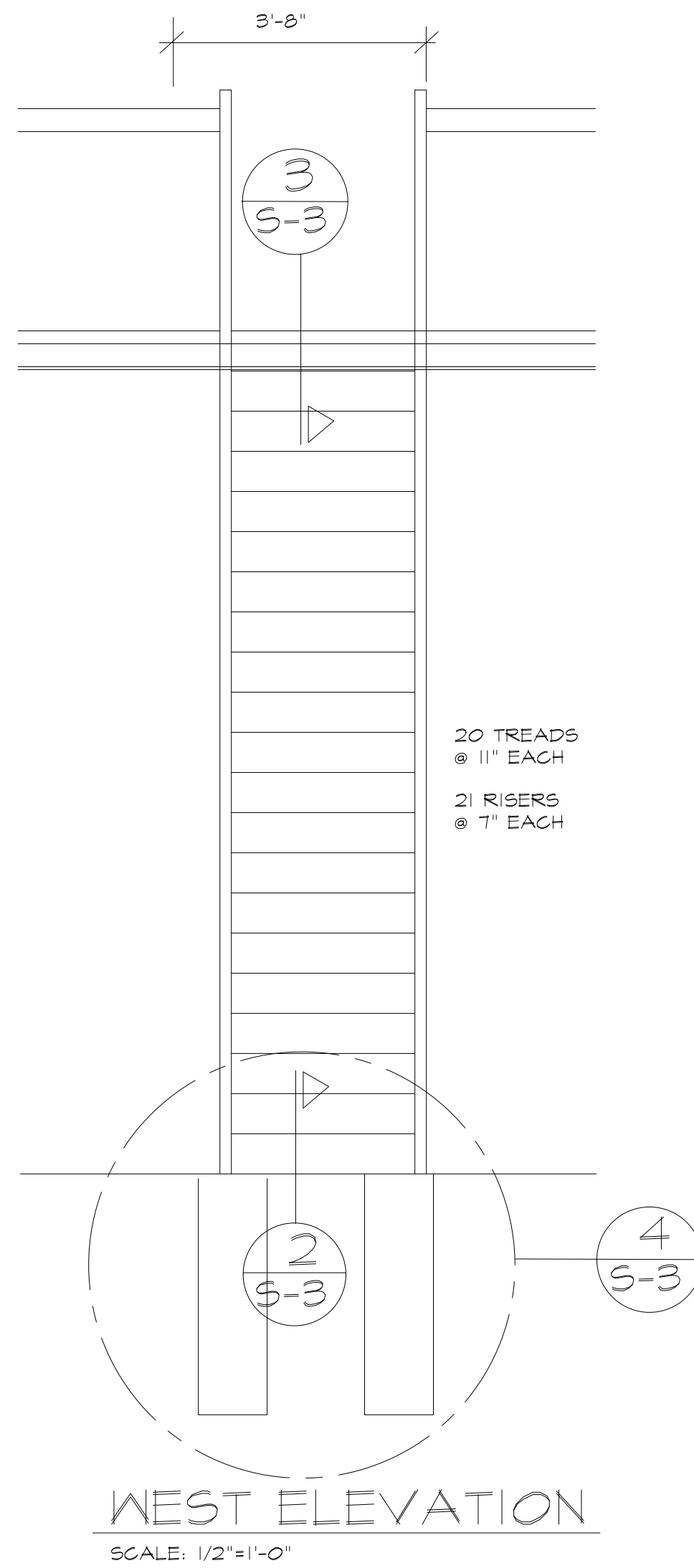
NORTH ELEVATION
SCALE: 1/8"=1'-0"



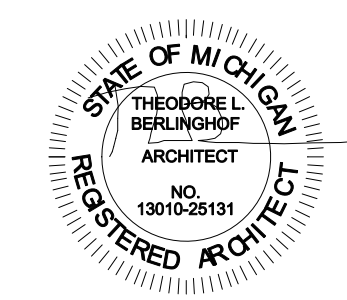
WEST ELEVATION
SCALE: 1/8"=1'-0"



NORTH ELEVATION
SCALE: 1/2"=1'-0"



WEST ELEVATION
SCALE: 1/2"=1'-0"

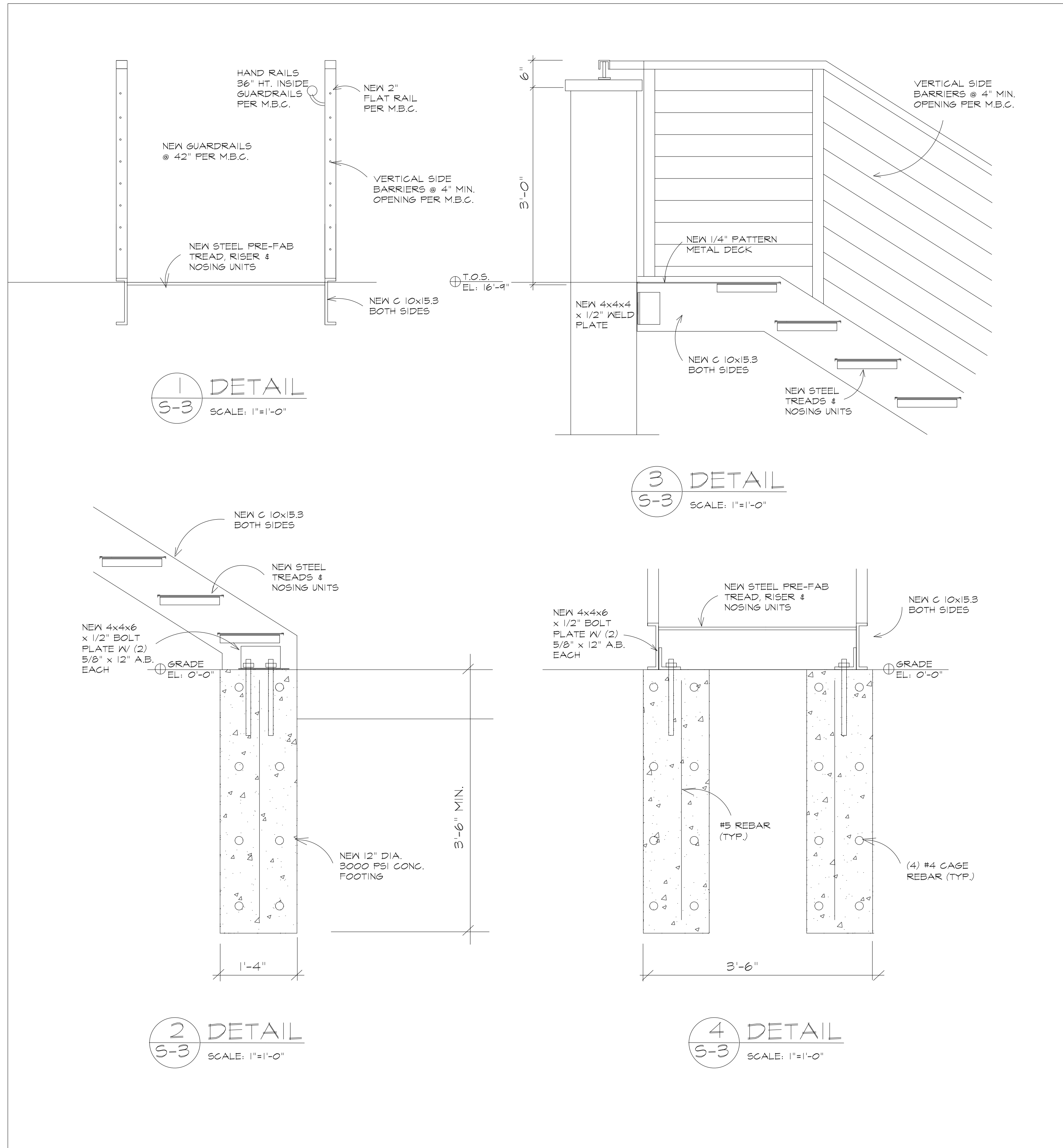


6-4-20	FOR PERMIT			
3-10-20	OWNER REVIEW	DATE	BY	BULLETIN
	ISSUE FOR			REVISIONS

SEASONS MARKET
4125 SECOND AVENUE
DETROIT, MI 48201

Architects Planners Engineers
ARCHITECTS INTERNATIONAL INC.
17400 Wildemere
Detroit, Michigan 48221
Phone: 313-341-7930
Fax: 313-341-6944

DESIGNED TLB	CHECKED TLB	PROJECT NO.
DRAWN TLB	DATE 3-6-20	2003
APPROVED TLB		
SHEET TITLE		SHEET NO.



SPECIFICATIONS

CONCRETE WORK

1. Provide and Install Concrete in the following areas:
 - a. Concrete Trench Footings.
2. Use ASTM C 150, Type I Concrete, 3000 p.s.i. Provide Concrete Tests to Owner for verification.
3. Use ACI Standards and Practices for Formwork and Reinforcing. ACI 301 and ACI 318.
4. Use ASTM A 615 Grade 60 or greater for reinforcing.

METAL FABRICATIONS

1. Provide miscellaneous metal work such as stair Support brackets, Steel Plates in order to complete the project.
2. Comply with all governmental regulations and Codes.
3. Fabricate the metal work with accurate angles and surfaces which are true to the required lines and levels, grinding exposed welds smooth and flush, forming exposed connections with hairline joints, and using concealed fastenings whenever possible.
4. Shop prime the work with "Rustoleum #5769 Primer" or equal. Where work will be inaccessible, apply two coats of primer.
5. After erection, grind exposed welds and touch up with Primer.

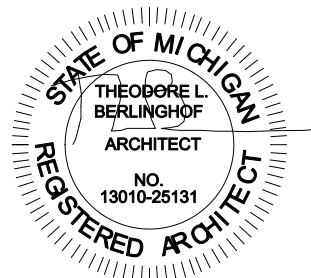
SHEET METAL FABRICATIONS

1. Install New Metal Decking, & prefabricated tread-risers.
2. Decking and stair landing to be perforated and sealed against moisture.
3. Use Galvanized Steel Sheet in compliance with ASTM A526. with Factory Finish.
4. Provide and install all necessary fasteners, clips, angles, bent metal, and trim necessary to support the Metal Fabrications to complete the project.
4. Steel Sheet is to be 18 Gauge minimum.
5. Submit Shop Drawings Metal Fabrications.

6-4-20	FOR PERMIT			
3-10-20	OWNER REVIEW			
DATE	ISSUE FOR	DATE	BY	BULLETIN
				REVISIONS

SEASONS MARKET
4125 SECOND AVENUE
DETROIT, MI 48201

Architects Planners Engineers
ARCHITECTSINTERNATIONAL INC.
17400 Wildemere
Detroit, Michigan 48221
Phone: 313-341-7930
Fax: 313-341-6944



DESIGNED TLB	CHECKED TLB	PROJECT NO.
DRAWN TLB	DATE 3-6-20	2003
APPROVED TLB		
SHEET TITLE		SHEET NO.
NEW FIRE STAIR DETAILS		A-4

RENOVATION FOR SEASONS MARKET

4125 SECOND AVENUE, DETROIT, MI 48201

USE GROUP

GROUP M - MERCANTILE

CONSTRUCTION TYPE

TYPE V-B

SQUARE FOOTAGE

FIRST FL.= 2107.8 SQ. FT.
 SECOND FL.= 920.0 SQ. FT.
 TOTAL: 3027.8 SQ. FT.

OCCUPANCY LOAD

FIRST FLOOR
 GENERAL 1752.9 SQ. FT.
 @ 1/60 S.F. = 29.22 PERSONS
 CONCESSION 354.9 SQ. FT.
 @ 1/300 S.F. = 1.18 PERSONS
 TOTAL: 30.40 PERSONS

SECOND FLOOR 920.0 SQ. FT.
 OPEN STAIR -126.0 SQ. FT.
 749.0 SQ. FT.
 @ 1/60 S.F.= 13.2 PERSONS
 BALCONIES 708 S.F.
 @ 1/60 S.F.= 11.8 PERSONS
 TOTAL= 25.0 PERSONS

BASEMENT 1364 SQ. FT.
 @ 1/60 S.F.= 4.5 PERSONS
 TOTAL: 59.9 PERSONS

ZONING

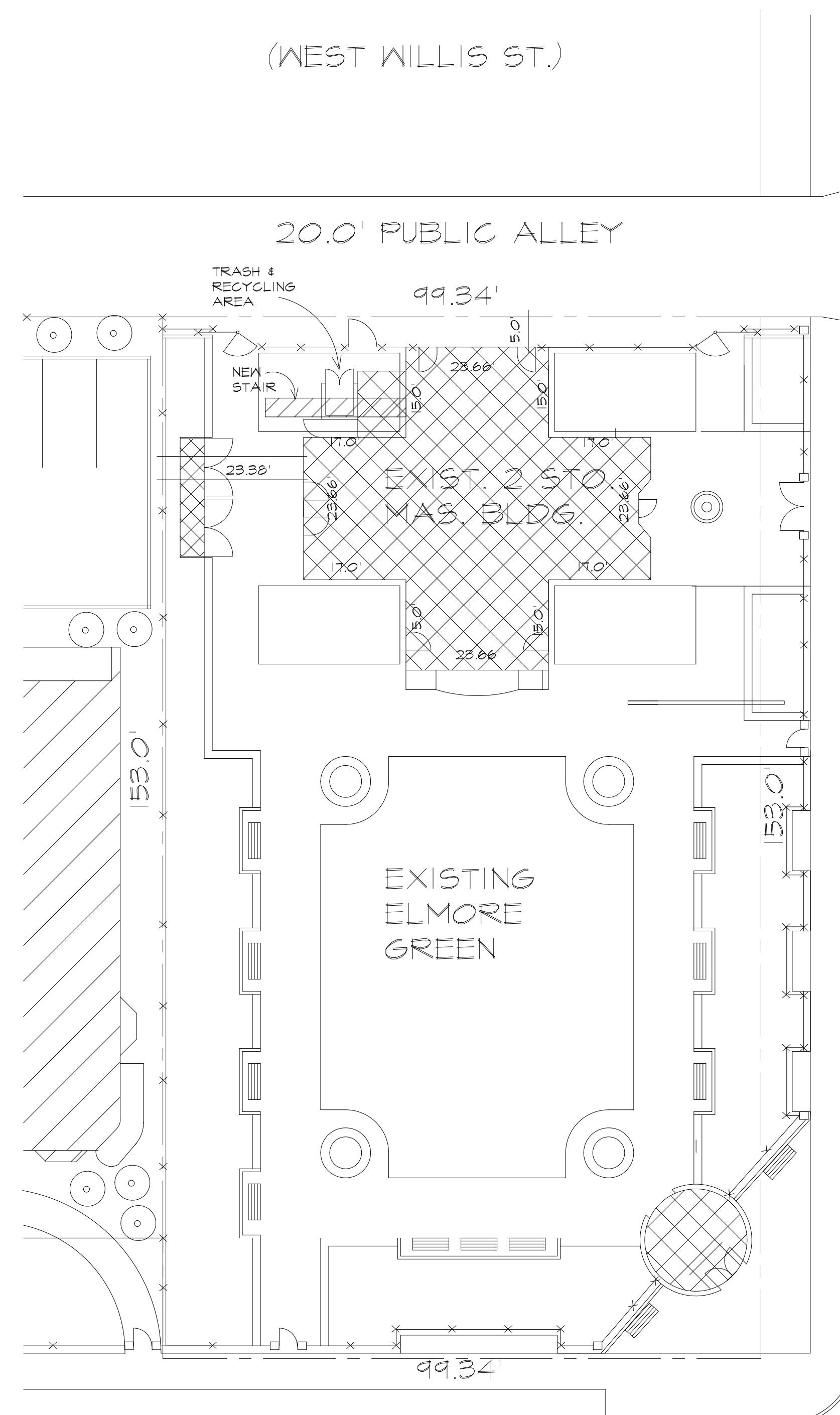
SD-2 SPECIAL DEVELOPMENT
 DISTRICT - MIXED USE

LEGAL DESCRIPTION

LOTS 15 AND 16 OF BLOCK 96 OF
 THE "PLAT OF SUBDIVISION OF PART
 OF THE CASS FARM", L. 1, P. 175-177
 PLATS, WAYNE COUNTY RECORDS.

PROJECT DESCRIPTION

OWNER WOULD LIKE TO RENOVATION
 THE EXISTING BUILDING INTO A
 MARKET WITH A CONCESSION STAND
 LOCATED IN THE SOUTH QUADRANT
 OF THE BUILDING.



LIST OF DRAWINGS

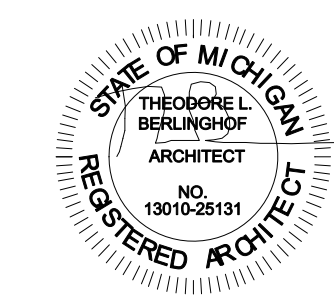
- ARCHITECTURAL PLANS
 SP-1 SITE PLAN
 A-1 BSMT. & 1ST. FL. PLANS
 A-2 2ND. FLOOR PLAN
 A-3 NEW EXTERIOR STAIR PLAN
 A-4 NEW STAIR DETAILS
 P-1 BSMT. & 1ST. FL. PLUMBING PLANS
 P-2 PLUMBING RISERS
 M-1 BSMT. & 1ST. FL. H.V.A.C. PLANS
 M-2 SECOND FL. H.V.A.C. PLAN
 E-1 BSMT. & 1ST. FL. POWER PLANS
 E-2 SECOND FL. POWER PLAN
 E-3 BSMT. & 1ST. FL. LIGHTING PLANS
 E-4 SECOND FL. POWER PLAN
 E-5 ELECTRICAL RISER DIAGRAMS

- FOOD SERVICE EQUIPMENT PLANS
 PSE-1 1ST. FL. CONCESSION PLAN
 PSE-2 CONCESSION MECH. PLAN
 PSE-3 CONCESSION ELEC. DETAILS
 PSE-4 CONCESSION ELEC. PLAN
 PSE-5 1ST. FL. MARKET PLAN
 PSE-6 MARKET MECHANICAL PLAN
 PSE-7 MARKET ELECTRICAL DETAILS
 PSE-8 BSMT. EQUIPMENT PLAN
 PSE-9 BSMT. MECHANICAL PLAN
 PSE-10 BSMT. ELEC. DETAILS
 PSE-11 BSMT. ELEC. PLANS
 PAS-12 BSMT. REFRIG. DETAILS
 PSE-13 WALK-IN COOLERS
 PSE-14 WALK-IN COOLER DETAILS

CODES USED

- 2015 MICHIGAN BUILDING CODE
 2015 MICHIGAN MECHANICAL CODE
 2015 MICHIGAN PLUMBING CODE
 2017 NATIONAL ELECTRICAL CODE
 W/ STATE AMANDMENTS
 MICHIGAN BARRIER FREE DESIGN LAW
 AS AMMENDED AND ICC/ANSI A117.1
 LOCAL ZONING ORDINANCES

SITE PLAN
 SCALE: 1/16"=1'-0"



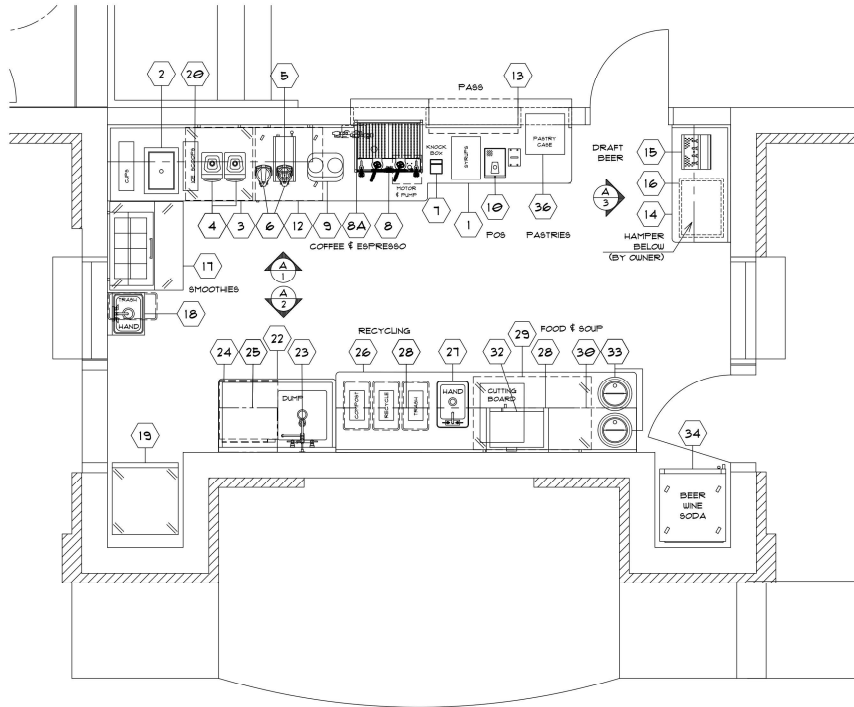
6-4-20	FOR PERMIT			
4-6-20	OWNER REVIEW	DATE	BY	BULLETIN
DATE	ISSUE FOR	REVISIONS		

SEASONS MARKET
 4125 SECOND AVENUE
 DETROIT, MI 48201

Architects Planners Engineers
 ARCHITECTSINTERNATIONAL INC.
 17400 Wildemere
 Detroit, Michigan 48221
 Phone: 313-341-7930
 Fax: 313-341-6944

DESIGNED TLB	CHECKED TLB	PROJECT NO.
DRAWN TLB	DATE 4-6-20	2003
APPROVED TLB		
SHEET TITLE		SHEET NO.
SITE PLAN		SP-1

REVISED:



CAFE FLOOR PLAN

ITEM #	QTY	UNITS	CATEGORY	MFR	MODEL	EQUIPMENT REMARKS	SUPPLIED BY
1	1	LOT	FRONT COUNTER	RFD FABRICATING	CUSTOM S/S		
2	1		DROP-IN ICE BIN	GLASTENDER	D-1B12		
3	1		REACH-IN UNDER-COUNTER FREEZER	TRUE	TUC-21F-D-2-HC	W/ 2.25" CASTERS	
4	2		BLENDER	VITAMIX	036019		
5	1		COFFEE BREWER	BUNN	23001-0003		
6	2		AIRPOT	BUNN	32130-0000		
7	1		KNOCK BOX	F&O	EPK665B		
8	1		ESPRESSO MACHINE	F&O	LINEA-PB-2-AV		
8A	1		ESPRESSO WATER FILTER	EVERPURE	EV927222		
9	1		COFFEE GRINDER	F&O	K30 TWIN		
10	1	LOT	POS & PRINTER	CUSTOM			BY OWNER
11	1		SPARE NUMBER				
12	1		UNDER-COUNTER REFRIGERATOR	TRUE	TUC-21G-LP-HC-FGD01		
13	1		PASS-THRU SHELF	CUSTOM MILLWORK	CUSTOM		BY MILLWORK CONTR
14	1	LOT	BEER COUNTER	RFD FABRICATING	CUSTOM S/S		
15	1		BEER TAPS	GLASTENDER	BT-4-95		BY BEVERAGE CO.
16	1		WALL SHELF	ADVANCE TABCO	WS-15-48		
17	1		SANDWICH / SALAD PREP REFRIG.	TRUE	TSSU-36-00-HC		
18	1		HAND SINK	ADVANCE TABCO	T-F8-60		
19	1		REACH-IN REFRIGERATOR	TRUE	T-23-HC		
20	1		WALL SHELF	RFD FABRICATING	CUSTOM S/S		
21	1		SPARE NUMBER				
22	1		DISHTABLE	ADVANCE TABCO	DTU-U60-40L		
23	1		PRE-RINSE FAUCET	TFS BRASS	MPZ-2-BULV-00-CR		
24	1		UNDER-COUNTER DISHWASHER	HOBART	LXE4-BUILDUP		
25	2		DISH SHELF	METRO	1034NK3		
26	1	LOT	BACK COUNTER	RFD FABRICATING	CUSTOM S/S		
27	1		DROP-IN SINK	ADVANCE TABCO	D-11-10		
28	3		WALL SHELF	RFD FABRICATING	CUSTOM S/S		
29	1		UNDER-COUNTER REFRIGERATOR	TRUE	TUC-18-LP-HC		
30	1		WALL SHELF	ADVANCE TABCO	WS-10-36		
31	1		SPARE NUMBER				
32	1		MICROWAVE OVEN	ACP	RC810TS	ON SHELF	
33	2		SOUP WARMER	VOLLRATH	741101DW		
34	1		REACH-IN REFRIGERATOR	TRUE	T-23G-HC-FGD01		
35	1		SPARE NUMBER				
36	1		COUNTERTOP PASTRY CASE	CAL-MIL	P25B-13		
37-38	1		SPARE NUMBER				

CAFE
FOODSERVICE EQUIPMENT
FLOOR PLAN

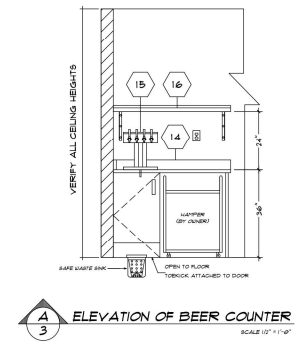
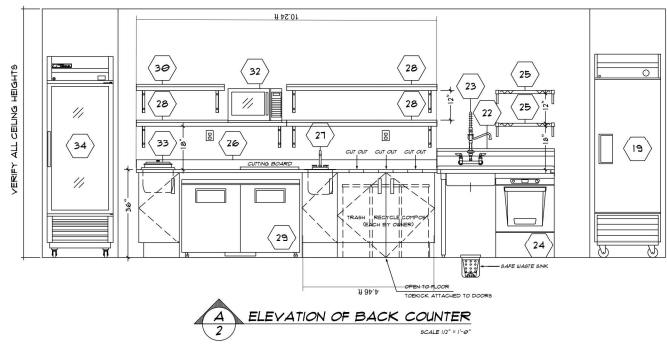
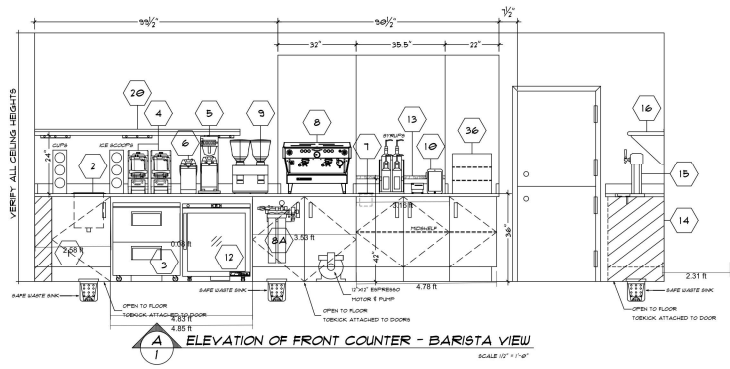
SEASONS MARKET CAFE
FIRST FLOOR
DETROIT, MI

DRAWN BY: CB/PL
 DATE: 05.20.20
 CHECKED BY: JMK
 SCALE: 1/2" = 1'-0"

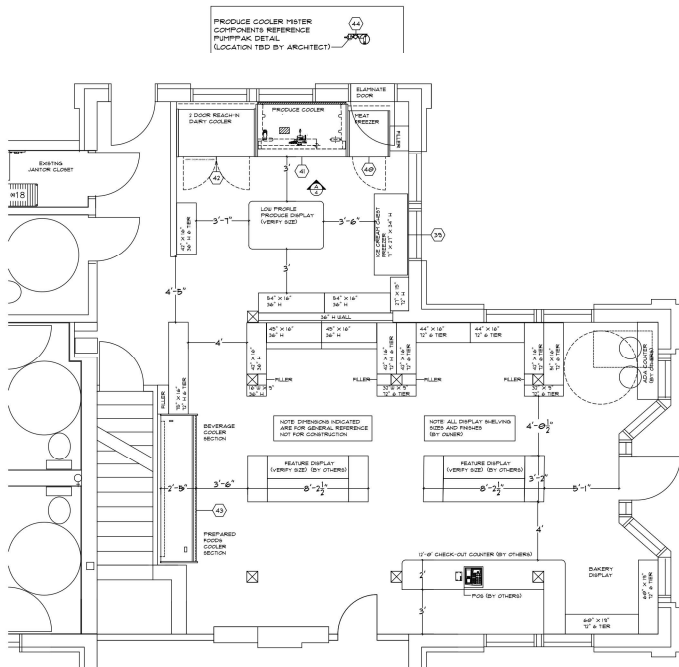
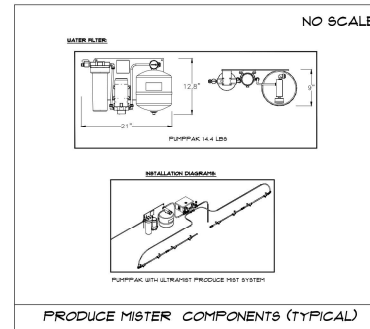
15614 Farmington Rd.
 Livonia, Michigan 48154
 P: 734.458.4775 | F: 734.458.4778
 drawing@damill.com



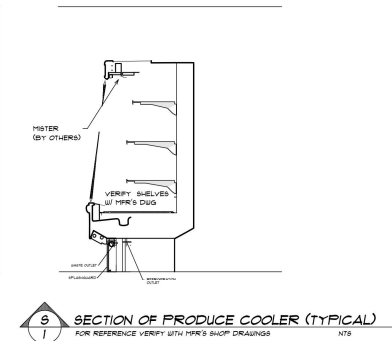
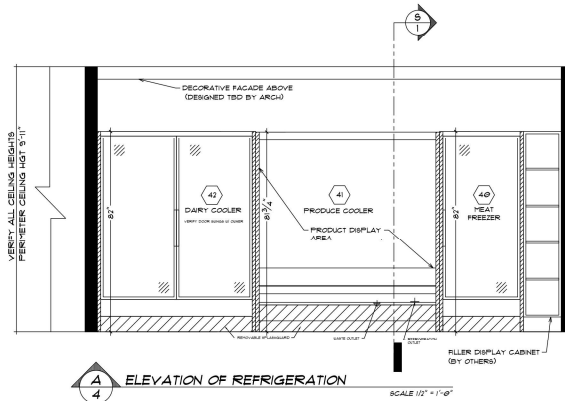
JOB NO#
2680
 SHEET
FSE-1
 OF 14

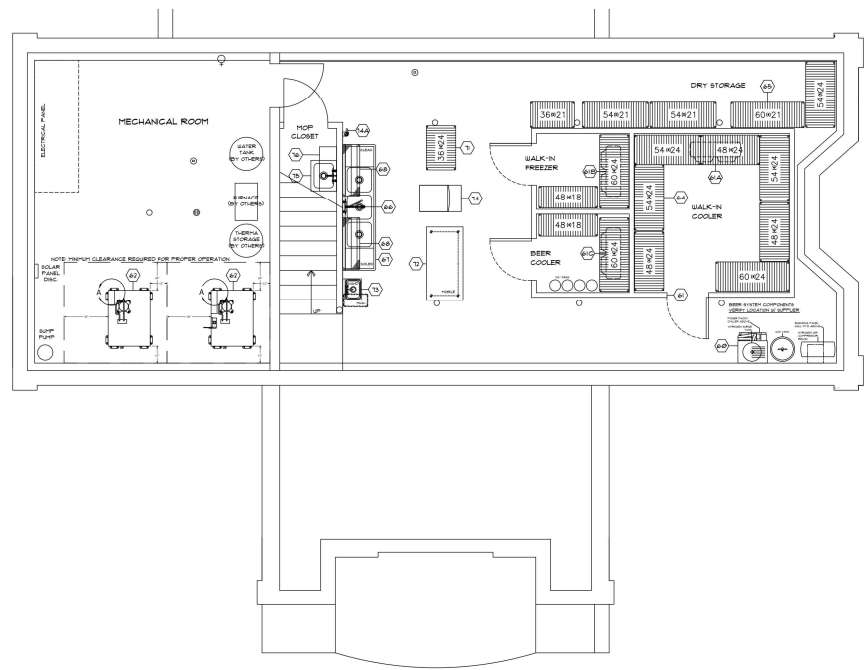
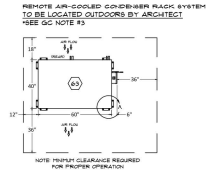


EQUIPMENT SCHEDULE						
ITEM #	QTY	UNITS	CATEGORY	MFR	MODEL	EQUIPMENT REMARKS
39	1		CURVED LID DISPLAY FREEZER	NOR-LAKE	CTBT1-11	
40	1		REACH-IN FREEZER	HUBBMAN	RLN	1 DOOR REMOTE
41	1		PRODUCE DISPLAY COOLER	HUBBMAN	F4-XE	REMOTE
42	1		REACH-IN DAIRY COOLER	HUBBMAN	RHN	2 DOOR REMOTE
43	1		GRAB N GO MERCHANDISER	HUBBMAN	RGD30-83-10	REMOTE
44	1		PRODUCE MISTER W/ PUMP FAK	CORRIGAN	ULTRAMIST	W/ WATER FILTER
60	1		DRAFT BEER SYSTEM	CUSTOM		IN BASEMENT



MARKET FLOOR PLAN





EQUIPMENT SCHEDULE						
ITEM #	QTY	UNITS	CATEGORY	MFR	MODEL	SUPPLIED BY
60	1		DRAFT BEER SYSTEM	CUSTOM		BY LEONARD'S SYRUPS
61	1	LOT	WALK-IN COOLER/FREEZER/BEER COOLER	KOLPAK	CUSTOM	
61A	1	LOT	WALK-IN COOLER EVAPORATOR COL	RDT	ADT-030	
61B	1	LOT	WALK-IN FREEZER EVAPORATOR COL	RDT	LET-065	
61C	1	LOT	WALK-IN BEER COOLER EVAPORATOR COL	RDT	ADT-040	
62	2		INDOOR REFRIGERATION SYSTEM	RDT	IRP2-02Z-C91-AER	
63	1		OUTDOOR CONDENSER RACK	RDT	Z92-C91-ARA	
64	1	LOT	WALK-IN SHELVING	METRO	METRO 9EAL III	
65	1	LOT	DRY STORAGE SHELVING	METRO	SUPER ERECTA BRIE	
66	1		PRE-RINSE W/ ADD ON FAUCET	TFS BRASS	B-0133-ADP12-BC	
67	1		THREE (3) COMPARTMENT SINK	ADVANCE TABCO	94-23-60-18RL	
68	2		DISH SHELF	METRO	1442NK3	
69			SPARE NUMBER			
70			SPARE NUMBER			
71	1	LOT	CLEAN DISH RACK	METRO	METRO 9EAL III	
72	1		MOBILE WORK TABLE	ADVANCE TABCO	T89-30B	
73	1		HAND SINK	ADVANCE TABCO	7-F9-60	
74	1		ICE MAKER W/ BIN	HANTWOOD	HT0420A	
14A	1		ICE MAKER WATER FILTER	EVERPURE	EV932401	
15	1		MOP SINK	ADVANCE TABCO	9-OP-20	BY GC
16	1		CLEANING SUPPLY SHELF	METRO	1436NK3	

WALK - IN SPECIFICATIONS



FREEZER / COOLER
OVERALL SIZE: 17'-11" X 11'-6" X 7'-6 1/4"

PANELS
FORMED IN PLACE URETHANE FOAM 4"

EXTERIOR FINISH
WALL: GALVALUME - EMBOSSED 26 GA EXCEPT AS NOTED
TOP: GALVALUME - EMBOSSED 26 GA
FLOOR: GALVALUME - EMBOSSED 26 GA

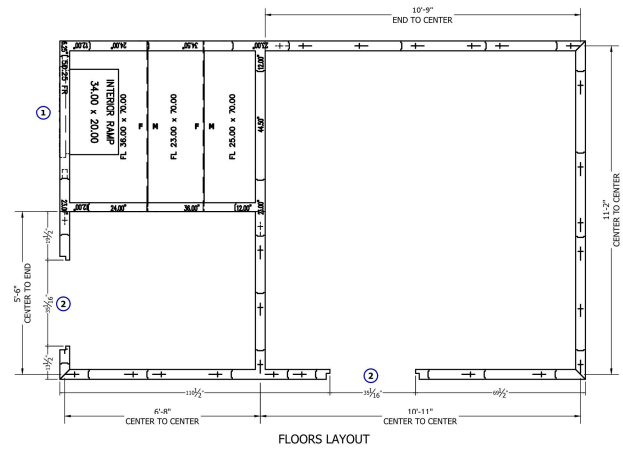
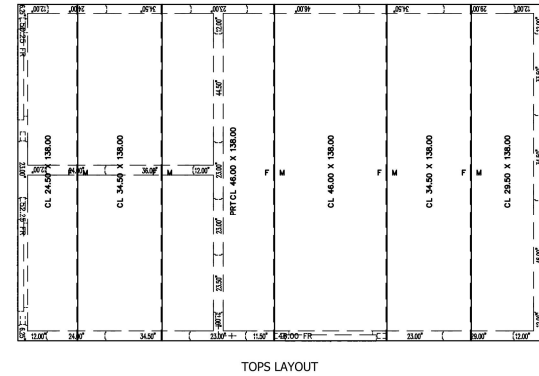
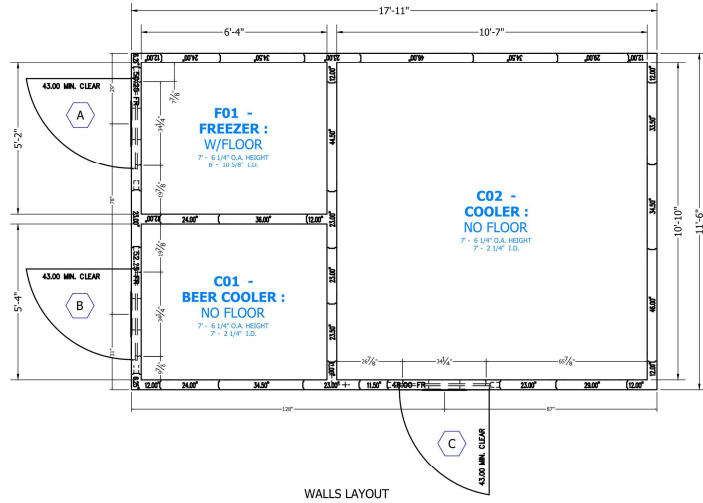
INTERIOR FINISH
WALL: ALUMINUM - NATURAL EMBOSSED - #90
TOP: ALUMINUM - EMBOSSED WHITE #90

FLOOR TYPE
F01 FREEZER:
STANDARD 1200V ERA
ALUMINUM - GRANITE TREAD, 100

C01 BEER COOLER: SCREED, VINYL 4" X 4" HIGH
C02 COOLER: SCREED, VINYL 4" X 4" HIGH

WALK-IN ACCESSORIES
(1) 5/8" ANTIKICK ALUMINUM GRANITE TREAD, 263
(4) LIGHT FIXTURE - KASON LED 115V/220V
(4) TRIM ANGLE 3" X 3" FT GALVALUME EMBOSSED 26 GA
(1) LOT, CLOSURE PANEL GALVALUME EMBOSSED 26 GA

REFRIGERATION
NONE



ATTENTION

- SUBMITTAL DRAWING NOT INTENDED FOR INSTALLATION.
- AS-BUILT DRAWING FOR INSTALLATION WILL BE AVAILABLE AFTER ORDER IS PLACED. HARD COPY OF AS-BUILT DRAWING WILL BE IN HARDWARE BOX WITH WALK-IN SHIPPED TO JOB SITE. ALL AS-BUILT DRAWINGS SHOW PART NUMBERS AND ID LABELS ON PLAN VIEWS.
- ALL WALK-INS ARE DESIGNED FOR ROOM APPLICATIONS UNLESS NOTED OTHERWISE.
- PERMITTERS AND SEALING OF ANY TYPE ARE THE RESPONSIBILITY OF OTHERS.
- ALLOW 2" MINIMUM CLEARANCE BETWEEN SECTION OF 2" OR MORE DIA. PIPES AND ENTIRE PANEL SURFACES. INDOOR WALK-INS REQUIRE A 2" AIR GAP AND 20" HEIGHT CLEARANCE UNLESS NOTED OTHERWISE. THE EXTENT OF THIS CLEARANCE SHALL BE AS NOTED ON DRAWING.
- GENERAL CONSTRUCTION AND FINISH REQUIREMENTS AND REVISIONS SHALL BE YOUR RESPONSIBILITY. WE DO NOT GUARANTEE THE ACCURACY OF THE INFORMATION OF CONCRETE. IT IS ABSOLUTELY NECESSARY THAT EACH ROOM BE PROPERLY VENTILATED.
- PANEL LAYOUTS MAY CHANGE BASED ON OPTIMAL POWER EFFICIENCY REQUIREMENTS.
- WALK-IN TOP IS NOT DESIGNED FOR ROOF TRAYS OR STORAGE UNLESS NOTED OTHERWISE.
- BY CONSENTING TO THIS CONTRACT YOU AGREE TO THE TERMS OF INCLUDING A 10% OF CLEARANCE IS REQUIRED AROUND TOP AND SIDES OF FLOOR, CABIN, AND FIT DETAILS ARE FOR GENERAL REFERENCE ONLY. THESE DRAWINGS SHOULD NOT BE USED OR INCORPORATED IN THE DESIGN OR PREPARATION OF THE BUILDING. ALL DIMENSIONS SHALL BE TO FACE UNLESS NOTED OTHERWISE.
- ALL DIMENSIONS ARE TO FACE UNLESS NOTED OTHERWISE. ALL DIMENSIONS SHALL BE TO FACE UNLESS NOTED OTHERWISE.
- THE FLOOR FINISH TO BE USED IN THIS PRODUCT COMPLIES WITH THE BUILDING CODES AND AS ALLOWED, PLEASE SPREAD MATING 20' SPACING THROUGHOUT THE FLOOR FINISH TO BE USED IN THIS PRODUCT. COOLERS IN WALLS ARE 2" DIA. FOR 4" THICK, 18" DIA. FOR 5" THICK, AND 24" DIA. FOR 6" THICK PANELS. FREEZER IN WALLS ARE 2 1/2" DIA. FOR 4" THICK, 4 1/2" DIA. FOR 5" THICK, AND 6" DIA. FOR 6" THICK PANELS. AND 30" DIA. FOR 6" FLOORS.
- FLOOR NOT DESIGNED FOR WET MOPPING, PALET JACKS, OR FORK LIFT TRAYS.

FOR APPROVAL
YOU MUST REVIEW ALL NOTES, DETAILS, DIMENSIONS, FINISHES, DOOR SIZES, LOCATION AND SPRINGS

APPROVAL: NO CHANGE REQUIRED, MANUFACTURE AS DRAWN.

APPROVED AS NOTED: MAKE REQUIRED CHANGES AND MANUFACTURE AS DRAWN.

NOT APPROVED: DESIGN CHANGES REQUIRE DRAWING REVISION AND RE-SUBMISSION.

DATE: _____ BY: _____

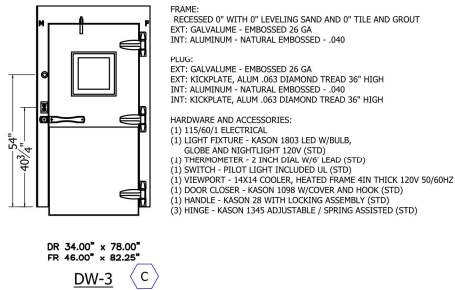
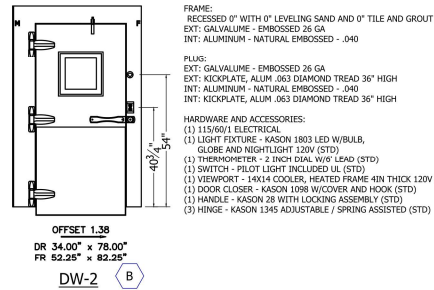
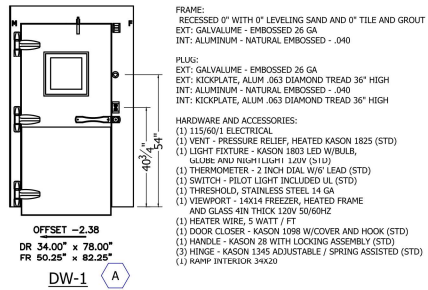
SMOOTH FINISH DISCLAIMER

Panels with non-textured and/or no-profile panel finishes (smooth finishes) on the exterior and interior faces may exhibit "oil canning" and flatness imperfections on the surface. Our standard panels have a stucco embossed texture on both faces that helps to reduce oil canning and any other irregularities in the exposed surface. Please be aware of this potential situation in your specification process. Such "oil canning" and flatness issues are typical and are not covered under standard warranties.

NOTICE:

- Kolpak and Harford walk-ins are compliant with UL standards.
- Door panels are UL471, UL file listing E46140.
- Standard Evaporator coils are UL412.
- Condensing Units are UL1995.

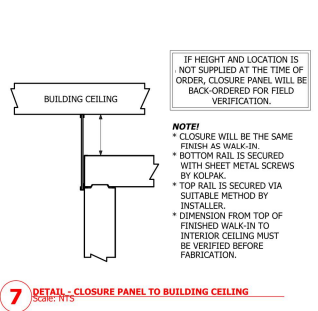
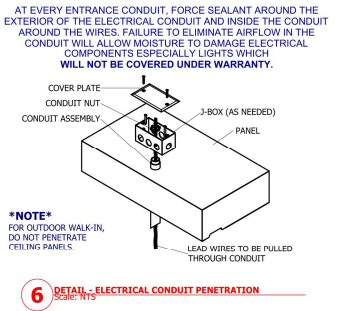
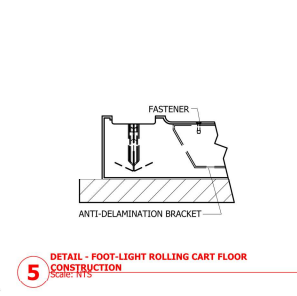
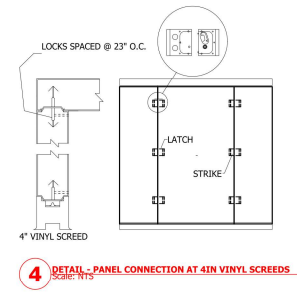
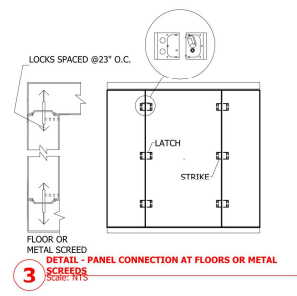
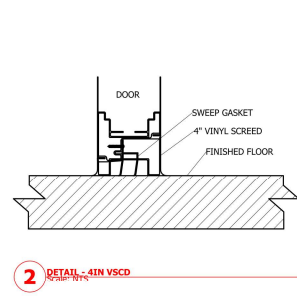
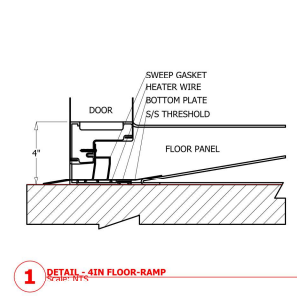




DOOR ELECTRICAL INFORMATION				
DESCRIPTION	QTY	VOLT	AMP	AMP LOAD
LED LIGHT	2	0.4	0.8	
HEATER WIRE	1	0.8	0.8	
KASON 1987 SWITCH / DIGITAL THERMOMETER COMBO	0	0.80	0.0	
HEATED AIR VENT	1	0.1	0.1	
HEATED VIEWPORT	1	0.9	0.9	
AIR SHIELD	0	1.4	0.0	
IN/OUT BUZZER	0	0.1	0.0	
FABRIC FOX BELUX DOOR DISPLAY	0	0.4	0.0	
ALARMS	0	1.0	0.0	
115 VOLT, SINGLE PHASE, 60 HZ, TOTAL DOOR AMPS:				2.60

DOOR ELECTRICAL INFORMATION				
DESCRIPTION	QTY	VOLT	AMP	AMP LOAD
LED LIGHT	2	0.4	0.8	
HEATER WIRE	1	0.8	0.8	
KASON 1987 SWITCH / DIGITAL THERMOMETER COMBO	0	0.80	0.0	
HEATED AIR VENT	0	0.1	0.0	
HEATED VIEWPORT	1	0.9	0.9	
AIR SHIELD	0	1.4	0.0	
IN/OUT BUZZER	0	0.1	0.0	
FABRIC FOX BELUX DOOR DISPLAY	0	0.4	0.0	
ALARMS	0	1.0	0.0	
115 VOLT, SINGLE PHASE, 60 HZ, TOTAL DOOR AMPS:				1.70

DOOR ELECTRICAL INFORMATION				
DESCRIPTION	QTY	VOLT	AMP	AMP LOAD
LED LIGHT	3	0.4	1.2	
HEATER WIRE	0	0.8	0.0	
KASON 1987 SWITCH / DIGITAL THERMOMETER COMBO	0	0.80	0.0	
HEATED AIR VENT	0	0.1	0.0	
HEATED VIEWPORT	1	0.9	0.9	
AIR SHIELD	0	1.4	0.0	
IN/OUT BUZZER	0	0.1	0.0	
FABRIC FOX BELUX DOOR DISPLAY	0	0.4	0.0	
ALARMS	0	1.0	0.0	
115 VOLT, SINGLE PHASE, 60 HZ, TOTAL DOOR AMPS:				2.10



AT EVERY ENTRANCE CONDUIT, FORCE SEALANT AROUND THE EXTERIOR OF THE ELECTRICAL CONDUIT AND INSIDE THE CONDUIT AROUND THE WIRES. FAILURE TO ELIMINATE AIRFLOW IN THE CONDUIT WILL ALLOW MOISTURE TO DAMAGE ELECTRICAL COMPONENTS ESPECIALLY LIGHTS WHICH WILL NOT BE COVERED UNDER WARRANTY.