

**QUAKER**  
COMMERCIAL  
anetumer@quakerwindows.com

Drawn By: Rod Bock  
Checked By: -----

504 Highway 63 South  
Freeburg, MO 65035

Scale: 3/8" = 1'  
Sheet #: A3

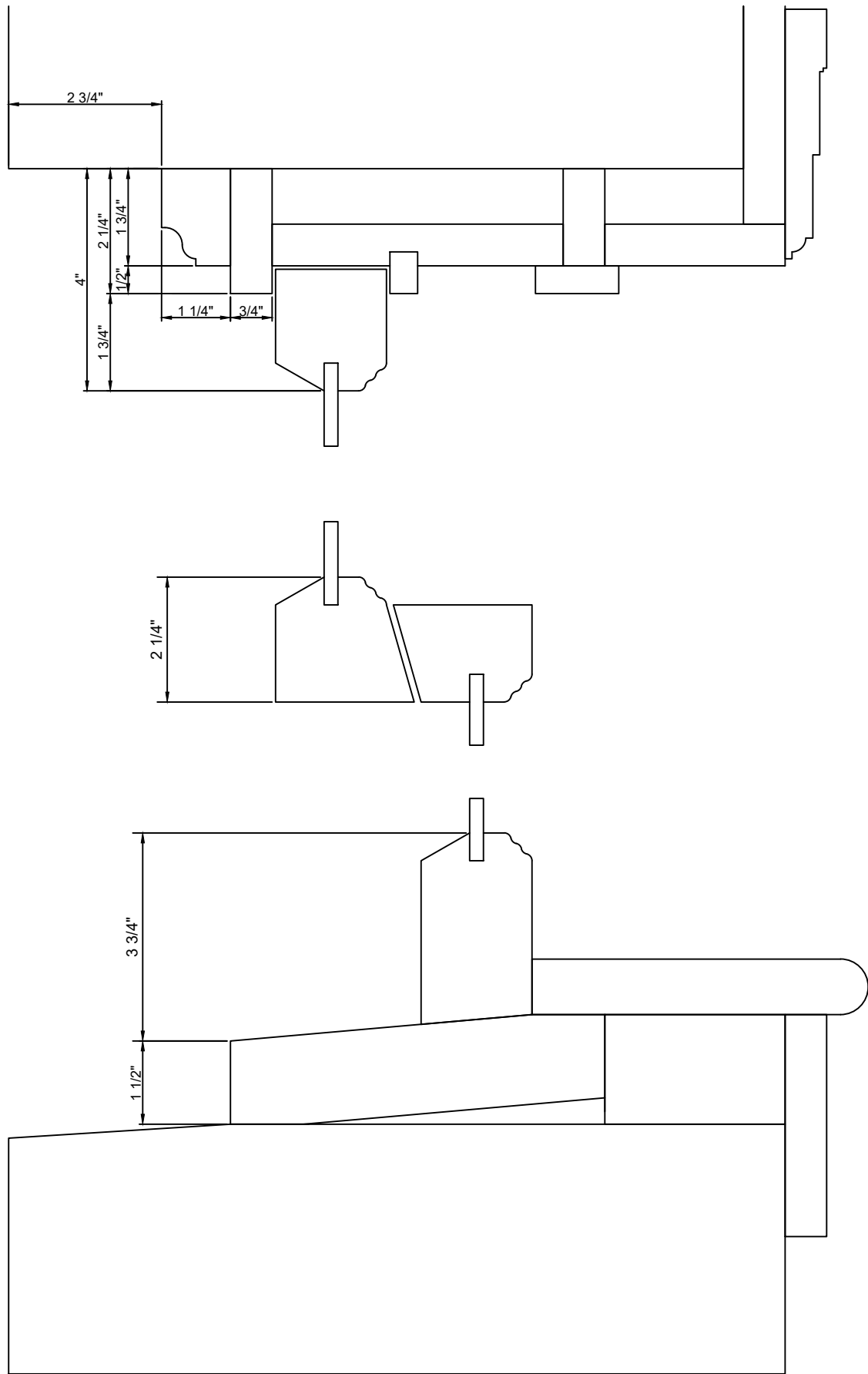
PHONE (573)-744-5211  
FAX (573)-744-5586

DESCRIPTION: QUAKER WINDOW PRODUCTS WILL NOT BE RESPONSIBLE FOR FIELD MEASUREMENT, QUANTITIES, & INSTALLATION DESIGN. CONTRACTOR MUST VERIFY ALL DIMENSIONS.

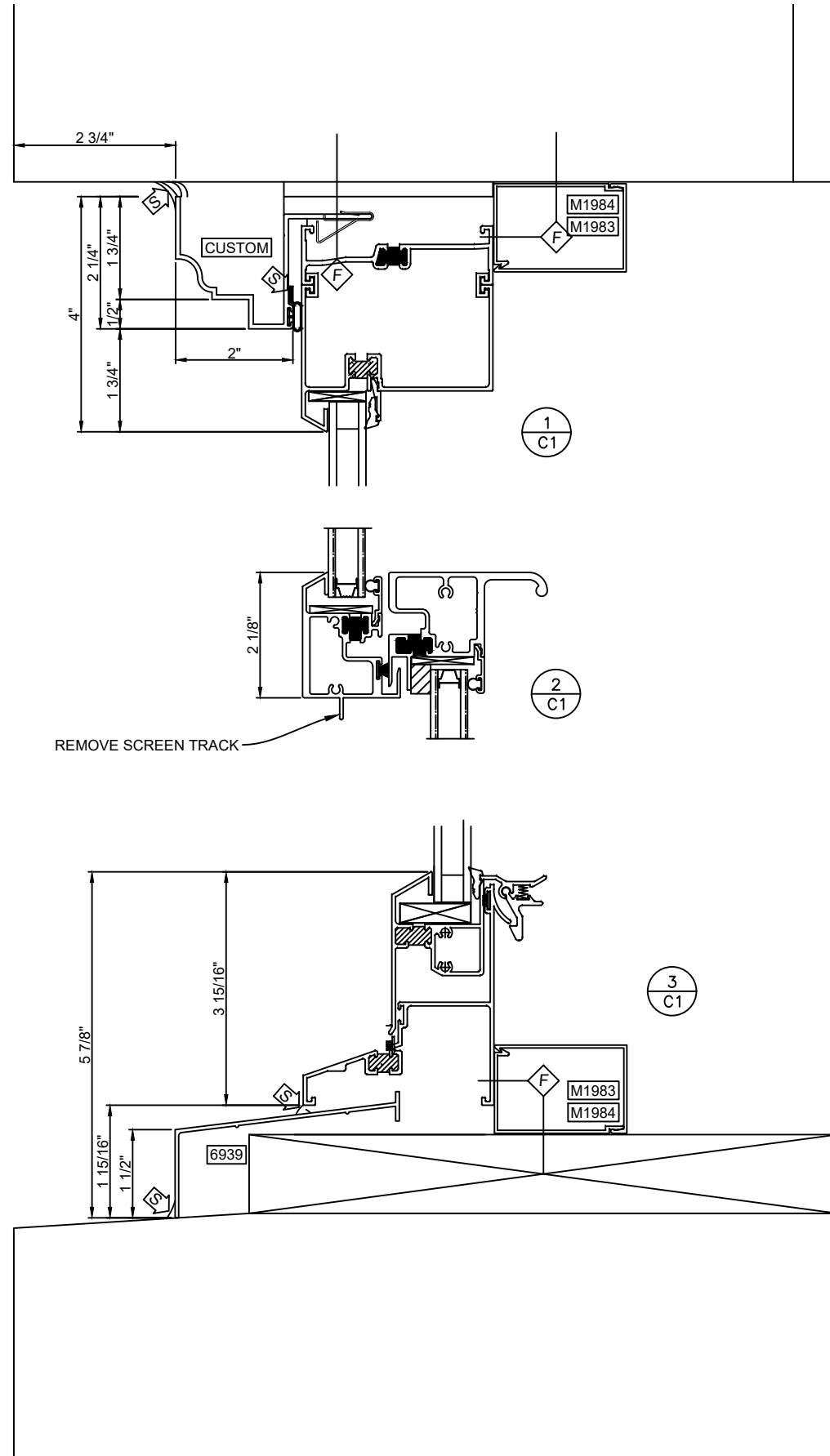
**ELEVATIONS**

Project Name: **Fowler Bldg**

EXTERIOR



EXISTING



PROPOSED

EXTERIOR

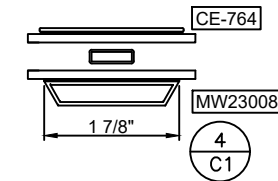
NAILING FLANGES AND DRIP CAPS (INTEGRAL OR APPLIED) DO NOT TAKE THE PLACE OF WINDOW FLASHING. ALL WINDOWS AND DOORS MUST BE PROPERLY FLASHED AND SEALED WITH MATERIAL COMPATIBLE SEALANT FOR PROTECTION AGAINST WATER AND INFILTRATION AROUND THE ENTIRE PERIMETER. FAILURE TO DO SO COULD RESULT IN PRODUCT OR PROPERTY DAMAGE.

**NOTICE:**  
QUAKER DOES NOT SUPPLY ANY FASTENERS, SHIMS, BACKER ROD, OR SEALANTS, UNLESS OTHERWISE NOTED.

VERIFY INSTALLATION  
VERIFY WALL DETAILS

SEALANT MUST MEET OR EXCEED  
ASTM C920-11 SPECIFICATION

PROVIDE ADEQUATE BLOCKING TO  
SUPPORT THE SILL OF THE WINDOW



Fowler Bldg

Project Name:

CUT DETAILS

Description:

QUAKER WINDOW PRODUCTS WILL NOT BE RESPONSIBLE FOR FIELD MEASUREMENT, QUANTITIES, & INSTALLATION DESIGN. CONTRACTOR MUST VERIFY ALL DIMENSIONS.

PHONE (573)-744-5211  
FAX (573)-744-5586

COMMERCIAL  
anetumer@quakerwindows.com



504 Highway 63 South  
Freeburg, MO 65035

Scale: 3/8"=1"

Sheet #: C1

Drawn By: Rod Bock

Checked By: -----

Drawing Created 6/9/20

NAILING FLANGES AND DRIP CAPS (INTEGRAL OR APPLIED) DO NOT TAKE THE PLACE OF WINDOW FLASHING. ALL WINDOWS AND DOORS MUST BE PROPERLY FLASHED AND SEALED WITH MATERIAL COMPATIBLE SEALANT FOR PROTECTION AGAINST WATER AND INFILTRATION AROUND THE ENTIRE PERIMETER. FAILURE TO DO SO COULD RESULT IN PRODUCT OR PROPERTY DAMAGE.

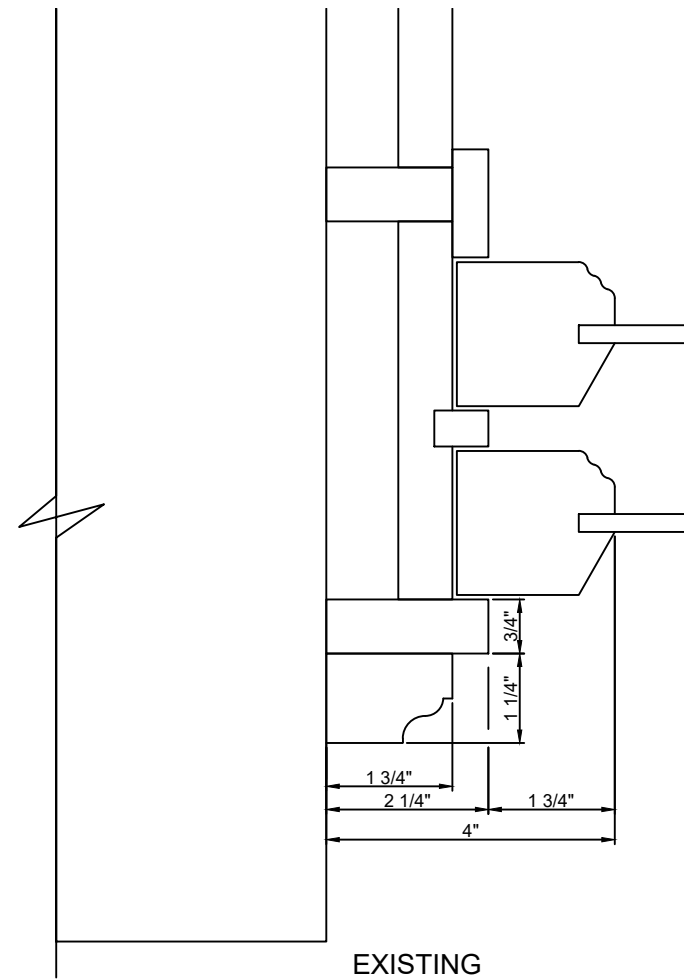
**NOTICE:**  
QUAKER DOES NOT SUPPLY ANY FASTENERS, SHIMS, BACKER ROD, OR SEALANTS, UNLESS OTHERWISE NOTED.

VERIFY INSTALLATION  
VERIFY WALL DETAILS

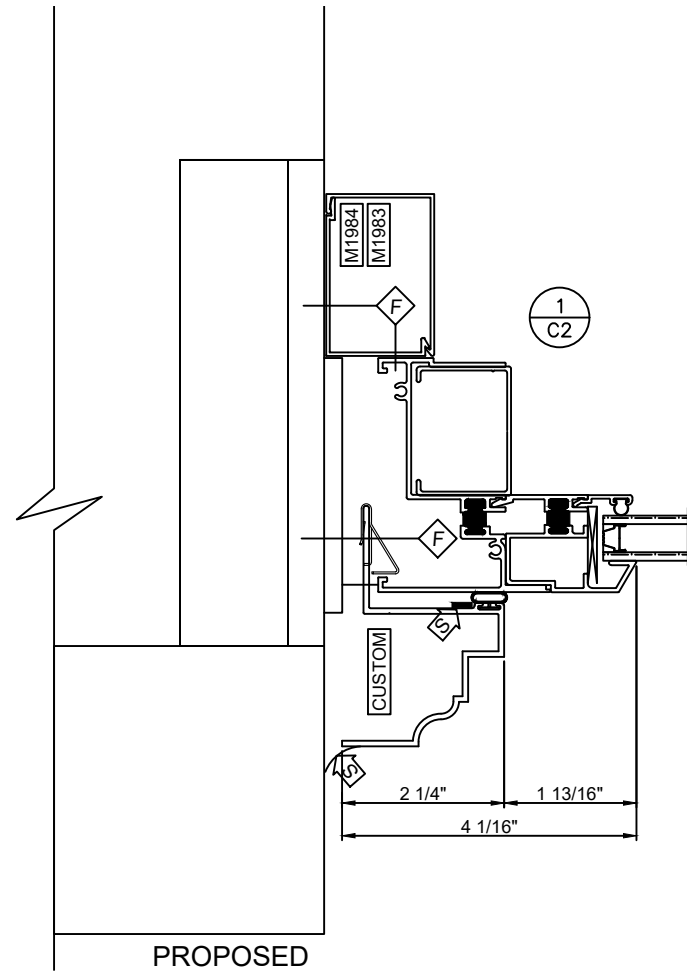
SEALANT MUST MEET OR EXCEED  
ASTM C920-11 SPECIFICATION

PROVIDE ADEQUATE BLOCKING TO  
SUPPORT THE SILL OF THE WINDOW

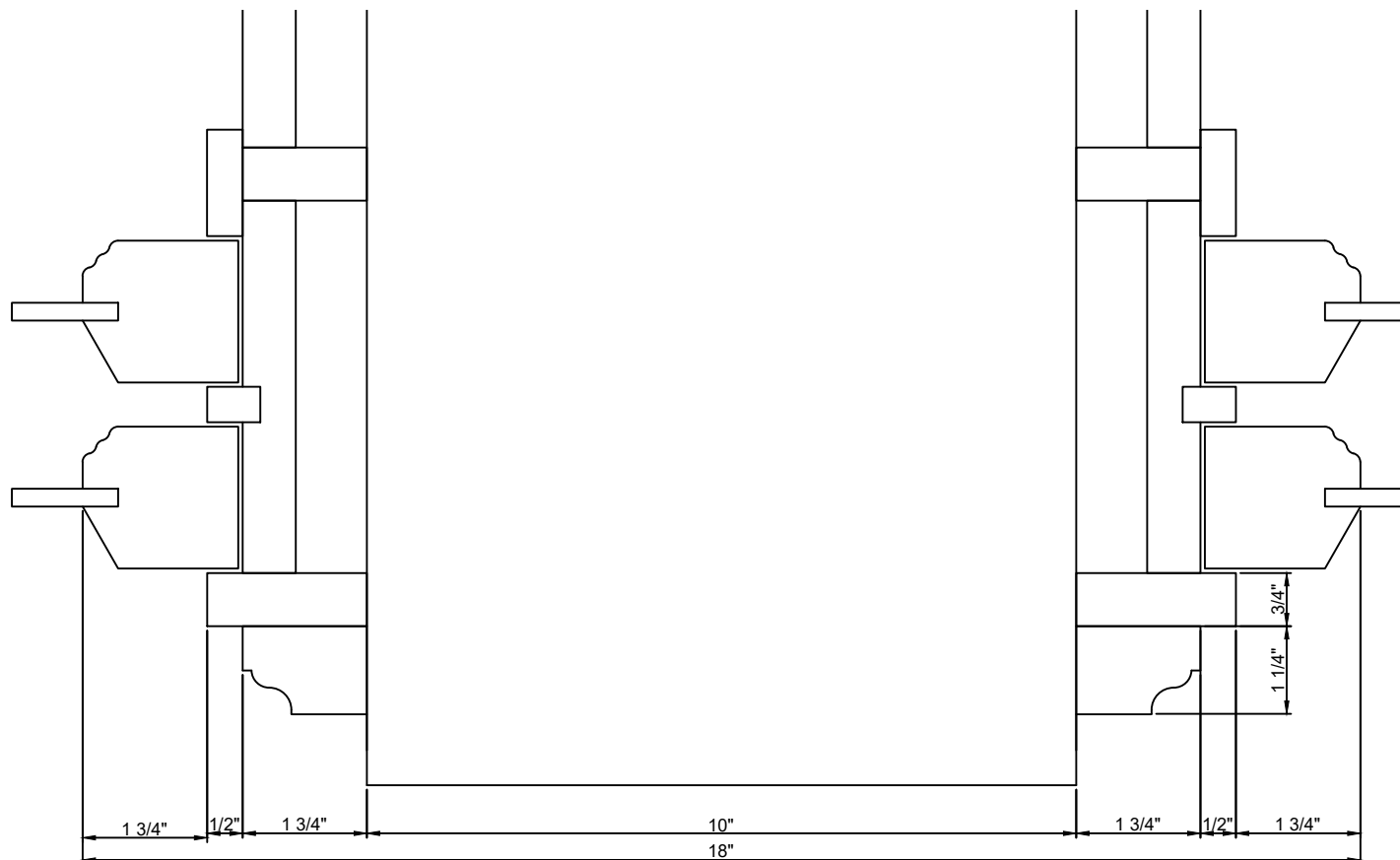
EXTERIOR



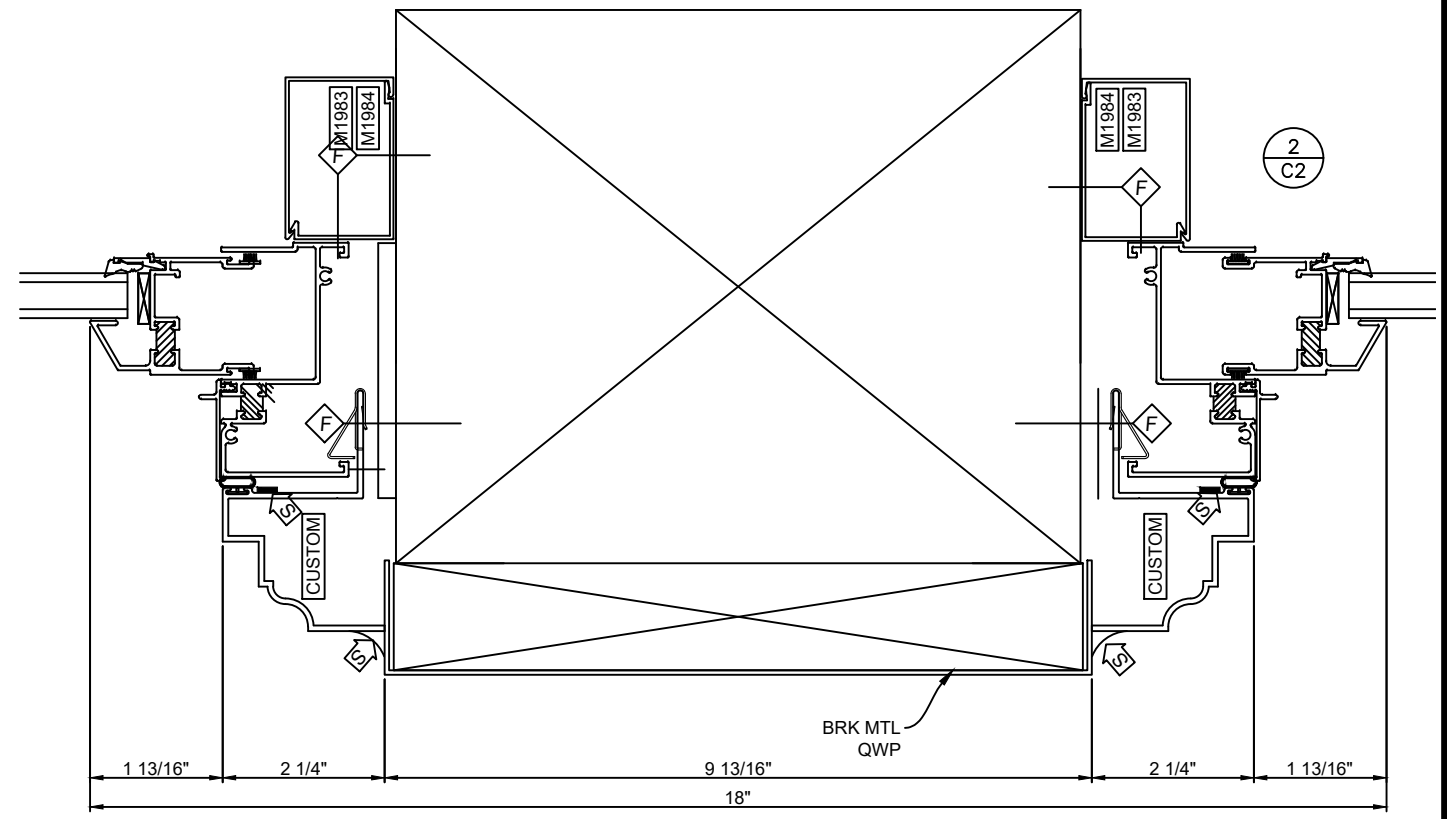
EXISTING



PROPOSED



EXISTING



EXTERIOR

PROPOSED

Project Name:

CUT DETAILS

Description:

QUAKER WINDOW PRODUCTS WILL NOT BE RESPONSIBLE FOR FIELD MEASUREMENT, QUANTITIES, & INSTALLATION DESIGN. CONTRACTOR MUST VERIFY ALL DIMENSIONS.

PHONE (573)-744-5211  
FAX (573)-744-5586  
COMMERCIAL  
anetmer@quakerwindows.com

**QUAKER**  
COMMERCIAL WINDOW PRODUCTS

504 Highway 63 South  
Freeburg, MO 65035  
Scale: 3/8"=1"  
Sheet #: C2

Drawn By: Rod Bock  
Checked By:   
Drawing Created 6/9/20

Fowler Bldg