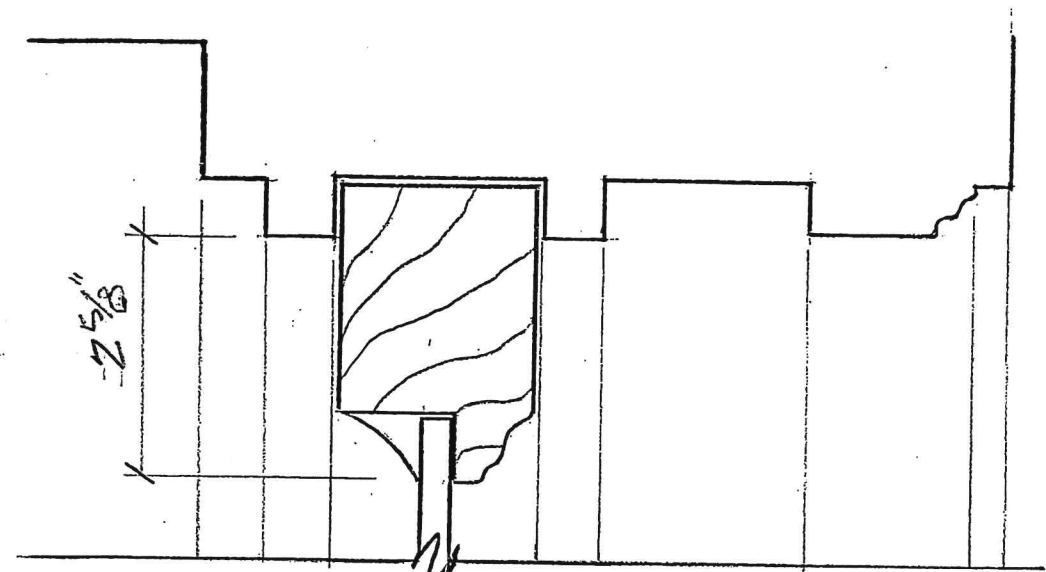
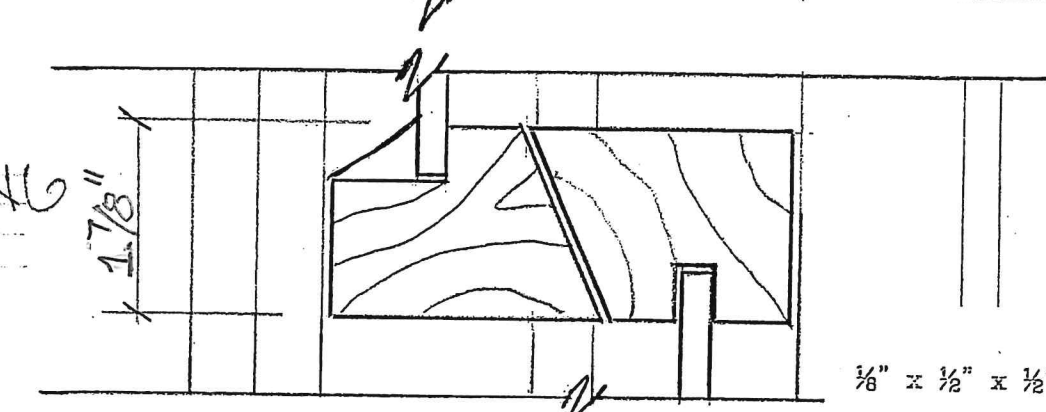


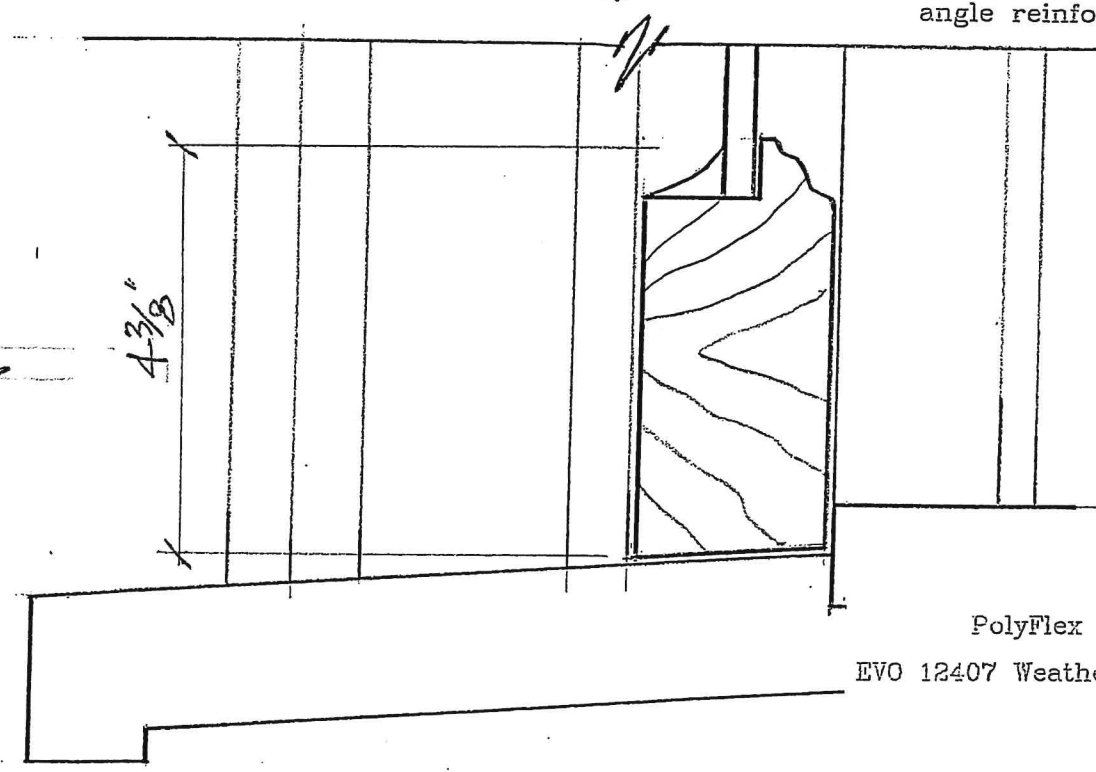
HEAD



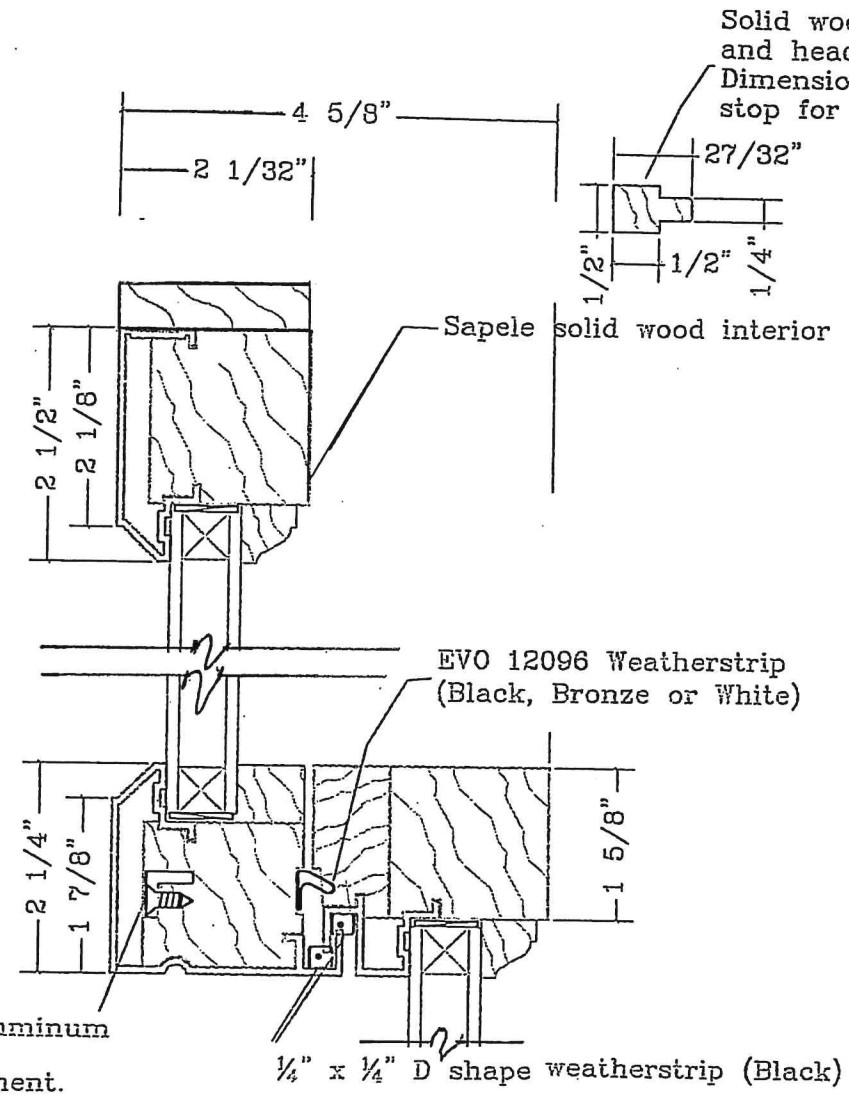
MEETING RAIL



STILE

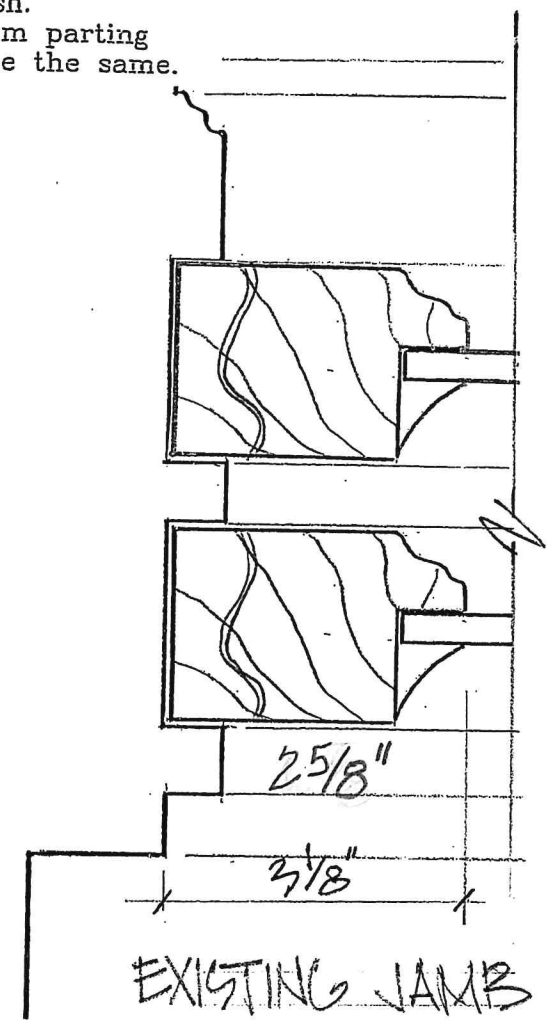


EXISTING
"WILLIAMS PIVOT SASH"
TO BE REMOVED.



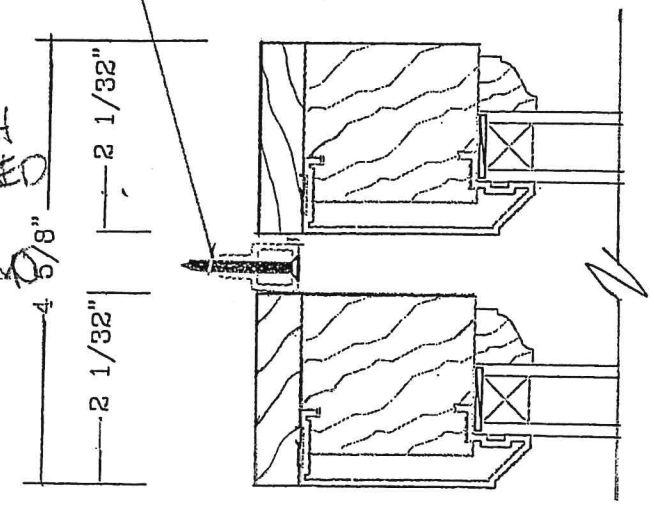
PROPOSED
ALUMINUM CLAD FIXED SASH
IN EXIST'G COPPER CLAD FRAMES

Solid wood parting stop at stiles and head of upper sash.
Dimensions of aluminum parting stop for lower sash are the same.



Aluminum parting stop at lower sash to be screwed in place with #6 x 1-1/4" screws.

NOTE:
PROPOSED SASH
AS MANUFACTURED
BY "RE-VIEW"
OF KANSAS CITY, MO



PROPOSED

WINDOW CONTRACTOR:
BLACKBERRY SYSTEMS, INC.

PROJECT: THE FOXLER BUILDING
OWNER: BEDROCK LLC
ARCHITECT: QUINN EVANS

SHEET ONE