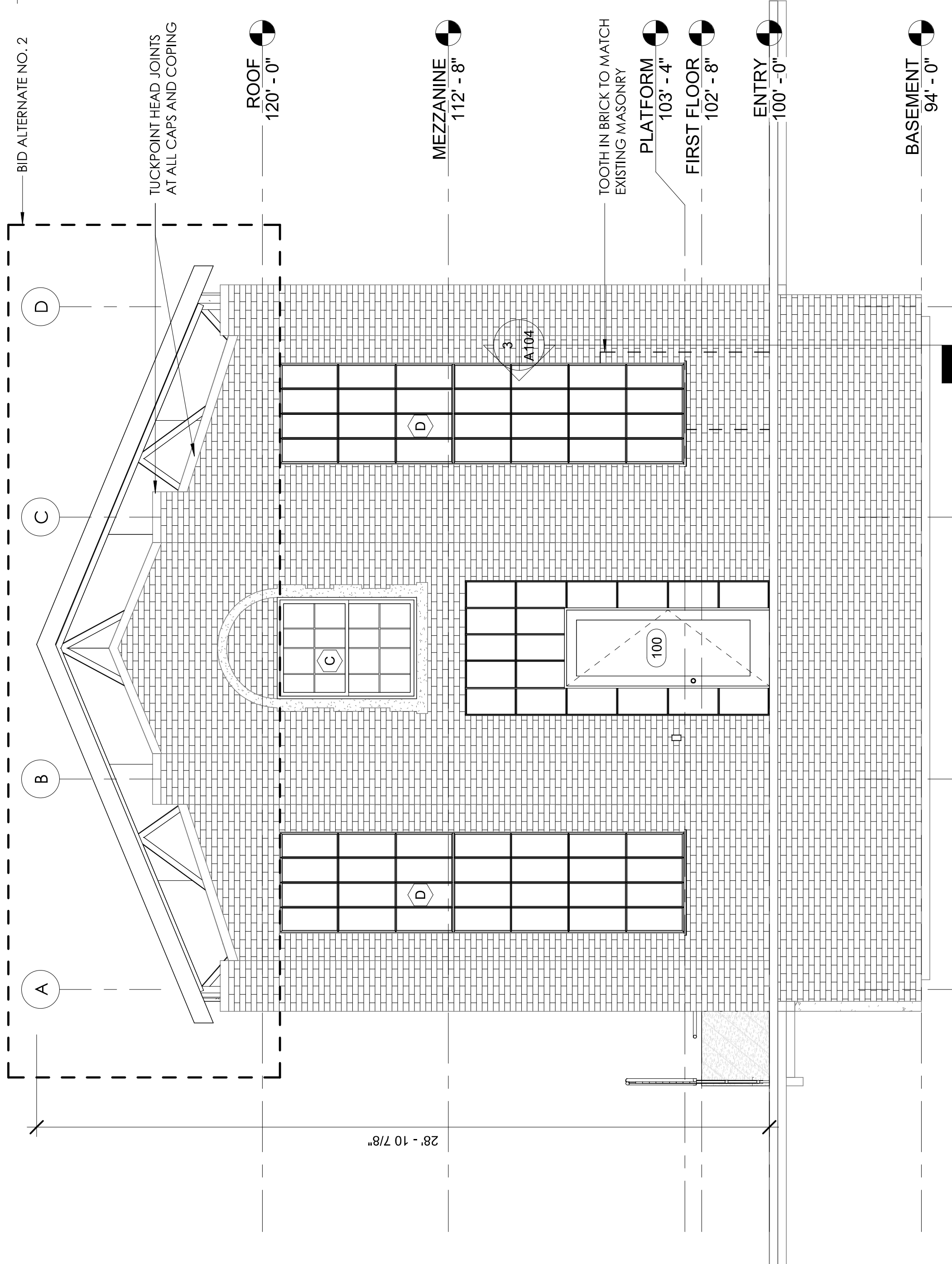
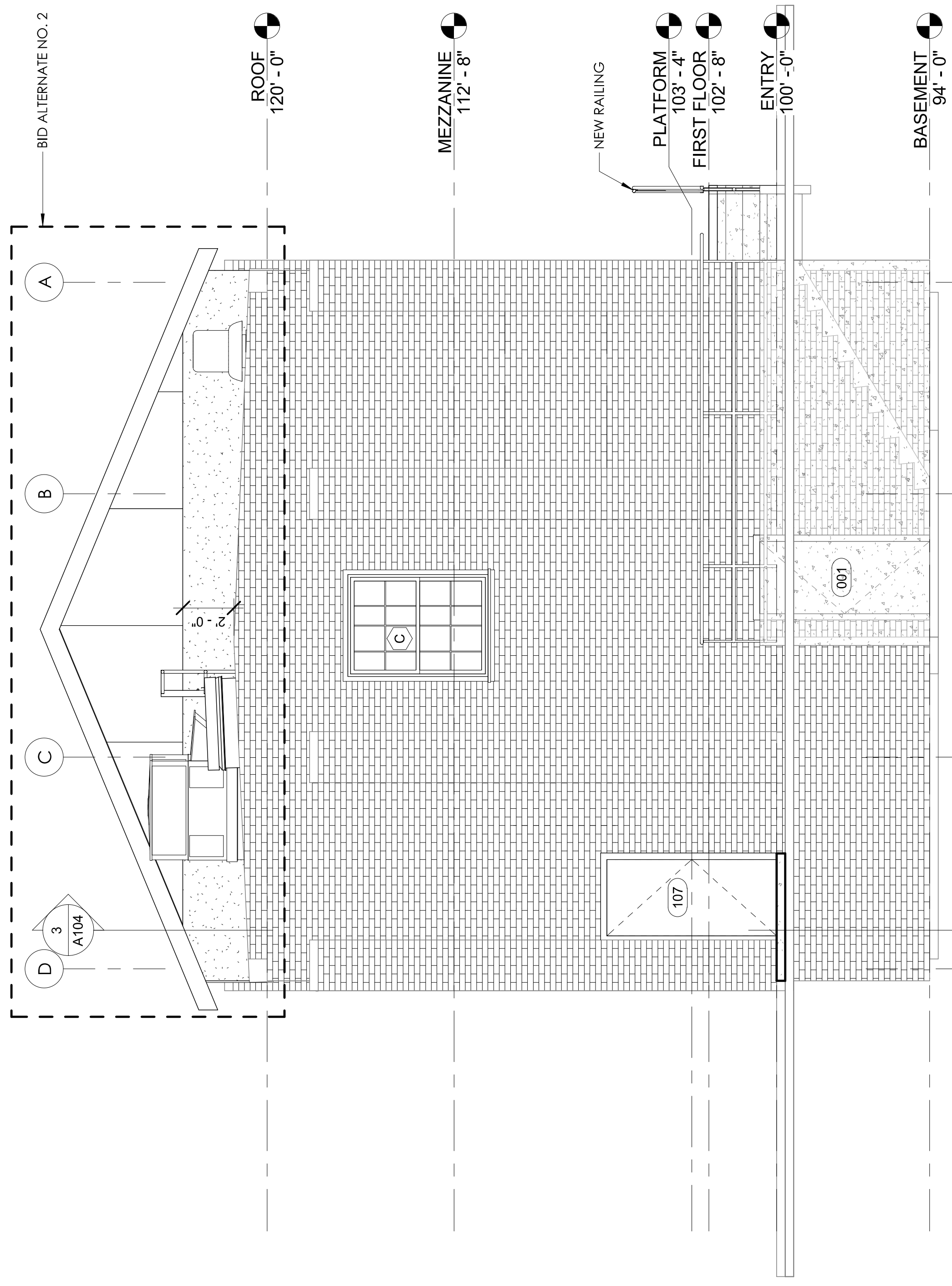


ELEVATION NOTES

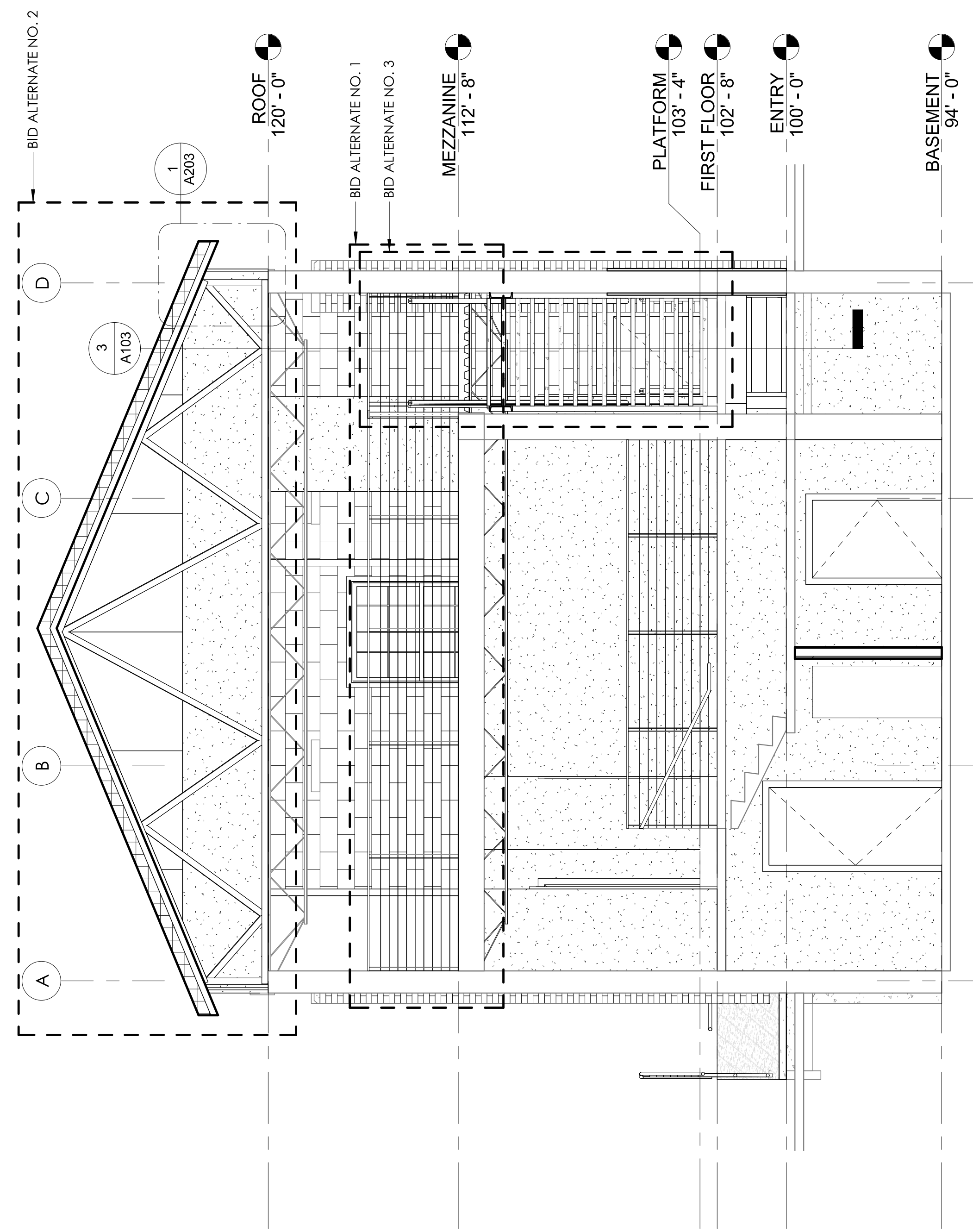
1. CLEAN ALL BRICK AND STONE TO REMOVE GRAFFITI AND ORGANIC MATERIAL. DO NOT USE HARSH CHEMICALS OR POWER WASHING EQUIPMENT.
2. TUCK POINT MASONRY JOINTS.
3. REPAIR CRACKS AND REPAIR MASONRY TO BE LIGHT ROOM FINISH.
4. REPLACE GUTTERS AND DOWNSPOUTS. ROUTE NEW DOWNSPOUTS BELOW GRADE TO NEAREST CATCH BASIN.
5. REMOVE BRICK WINDOW PICTURE FRAMES FROM LOWER HALF OF TYPE-B WINDOW.
6. METAL ROOFING, GUTTERS, DOWNSPOUTS, SHEET FLASHING AND FLASHING TO BE 1/2" GALVANIZED STEEL.
7. EXTERIOR RAILING SYSTEM TO BE 1/2" FABRICATED STEEL PIPE RAIL TO PANELIZED AND POWDER COATED BLACK. SPACE POSTS AT 6'-0" O.C. MAX AND HORIZONTAL RAILINGS AT 16" O.C. VERTICALLY DOWN FROM 36" HAND RAIL. CONNECT PANELS VIA SLEEVES AND BLIND FASTENERS. DO NOT WELD. SLEEVE CONCRETE AND SET POSTS IN NON-SHINK GROUT.



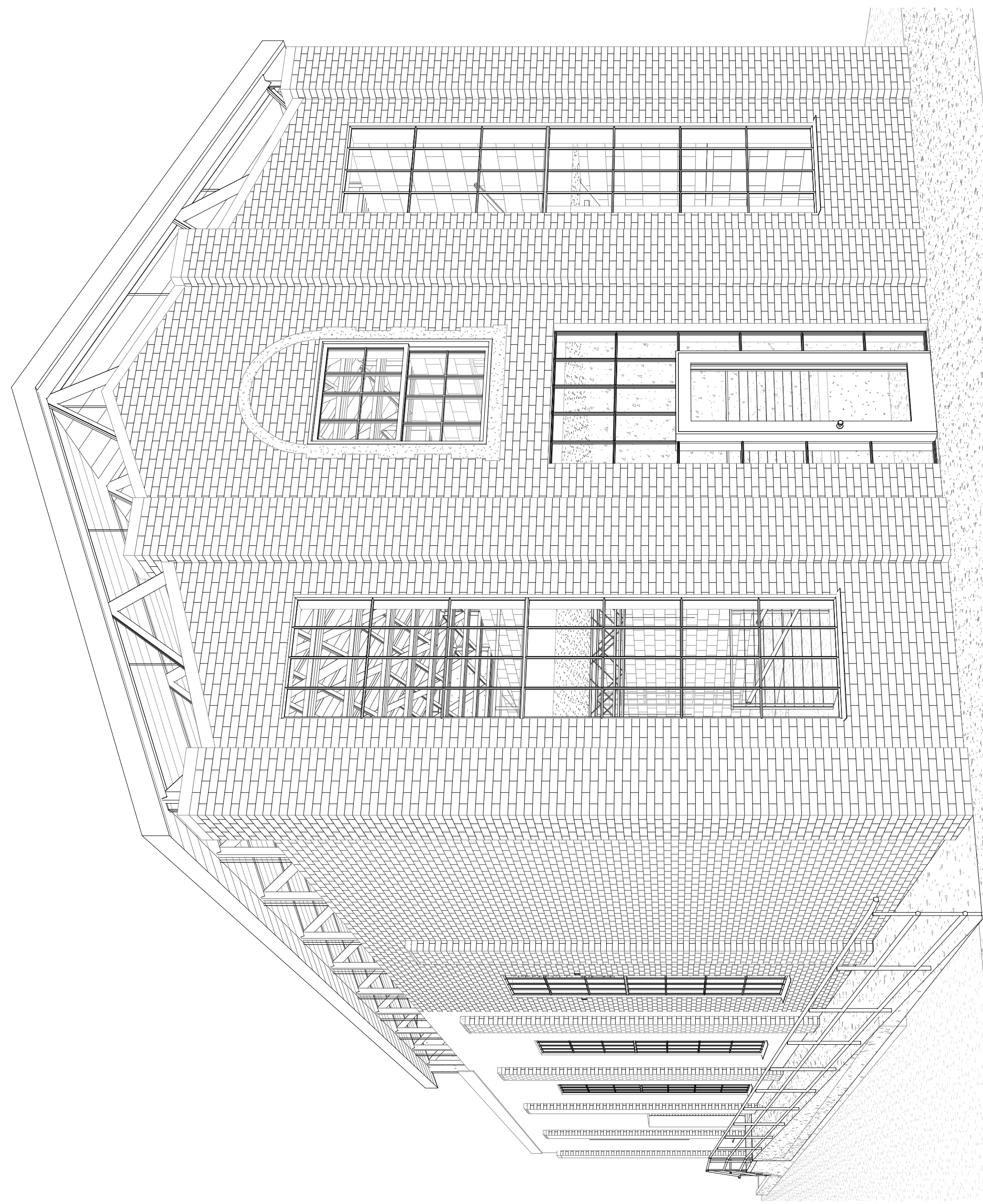
1 SOUTH ELEVATION
A102
1/4" = 1'-0"



2 NORTH ELEVATION
A102
1/4" = 1'-0"



3 SECTION A
A101
1/4" = 1'-0"



4 FROM WATSON
A102
1/4" = 1'-0"