

GENERAL NOTES

- DO NOT SCALE DRAWINGS.
- INDICATE THE FACE OF MASONRY, FACE OF CONCRETE, FACE OF STUDS, COLUMN CENTERLINE AS SHOWN OR EXISTING CONSTRUCTION UNLESS OTHERWISE NOTED.
- ALL DIMENSIONS ARE PERPENDICULAR AND PARALLEL.
- PROVIDE ALL FLOORING ASSEMBLIES AT ALL MECHANICAL AND ELECTRICAL PENETRATIONS THROUGH FIRE RATED AND SMOKE RESISTANT PARTITIONS WITH SYSTEMS APPROVED BY AUTHORITIES HAVING JURISDICTION.
- OWNER FURNISHINGS ARE SHOWN LIGHT FOR REFERENCE.
- CEILING, PREP. AND PAINT ALL EXISTING TO REMAIN STEEL BAR JOISTS.

INTERIOR WALL GENERAL NOTES

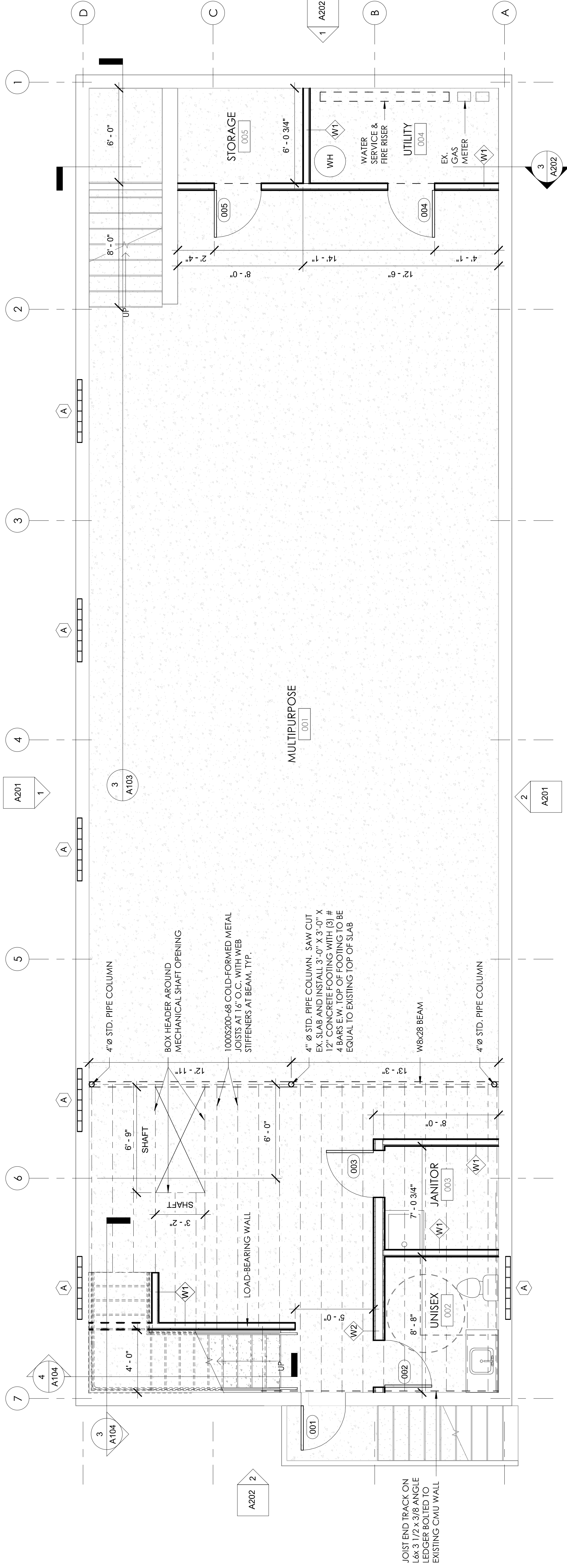
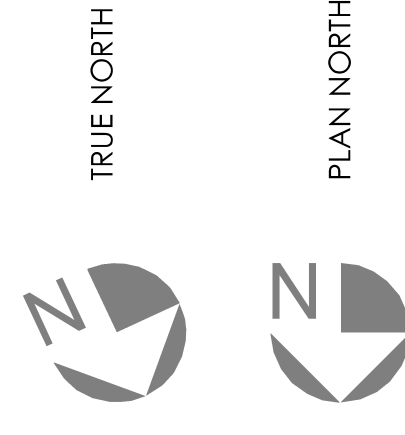
- NEW WALL CONSTRUCTION**
- CONSTRUCT ALL WALLS TIGHT TO ROOF TRUSSES ABOVE, UNLESS OTHERWISE NOTED.
 - FRIG. AND SMOKE RESISTANT ASSEMBLIES SHALL BE PERFORMED IN ACCORDANCE WITH THE FOLLOWING: PROVIDE FRESTOPPING/SMOKE SEALANT AT ALL PENETRATIONS THROUGH FIRE RATED AND SMOKE RESISTANT ASSEMBLIES, CORRIDORS, AND FLOORS WITH OCCUPYABLE SPACES ABOVE AND BELOW.
 - PROVIDE IDENTIFY FIRE RATED AND SMOKE RESISTANT PENETRATIONS ON WALL ABOVE CEILING AT 30 FEET ON CENTER.
 - PROVIDE ACOUSTICAL SEALANT AT ALL WALLS WITH ACOUSTICAL INSULATION.
 - PROVIDE 5/8" MOISTURE RESISTANT GYPSUM WALLBOARD ON BOTH SIDES OF ALL INTERIOR WALLS WITH 250CS FINISH ATTACHED TO STUDS, EXCEPT AT WALLS RECEIVING TILE (SEE NOTE 7).
 - PROVIDE 5/8" TILE BACKER AT ALL TILE WALLS.
 - REFER TO STRUCTURAL DRAWINGS FOR MASONRY REINFORCING AND GROUPING.

WALL TYPE LEGEND

- W1 3/8" METAL STUDS @ 16" O.C. W/ 5/8" GYPSUM BOARD ON BOTH SIDES. EXTEND WALLS TO 12'-0" ABOVE FINISH FLOOR UNLESS OTHERWISE NOTED. **UL I417 1-HOUR WHERE SHOWN** ATTENUATION BLANKETS.
- W2 6" METAL STUDS @ 16" O.C. W/ 5/8" GYPSUM BOARD ON BOTH SIDES. EXTEND WALLS TO 12'-0" ABOVE FINISH FLOOR UNLESS OTHERWISE NOTED. **UL I417 1-HOUR WHERE SHOWN** ATTENUATION BLANKETS.
- W3 FACE BRICK WITH 3/4" AIR SPACE, WEATHER BARRIER, MOISTURE BARRIER AND (2) LAYERS 3/4" TYPE X GYPSUM BOARD INTERIOR SIDE. EXTEND ALL WALL COMPONENTS TO SOFFIT AT 8'-0". INSULATE ALL CAVITIES WITH MINERAL WOOL R-21 BATS. **UL I424, SYSTEM A 2-HOUR**
- W4 5/8" TYPE X GYPSUM BOARD ON EXTERIOR SIDE OF 2 1/2" C-H METAL STUDS AT 24" O.C. W/ 1" GYPSUM LINER PANELS ON INTERIOR SIDE. **UL I415, SYSTEM A 1-HOUR**
- W5 4" FACE BRICK ON EXTERIOR SIDE OF 8" CMU (EXISTING TO REMAIN). **MRC RESOURCE A-W-12-M-44 2-HOUR**

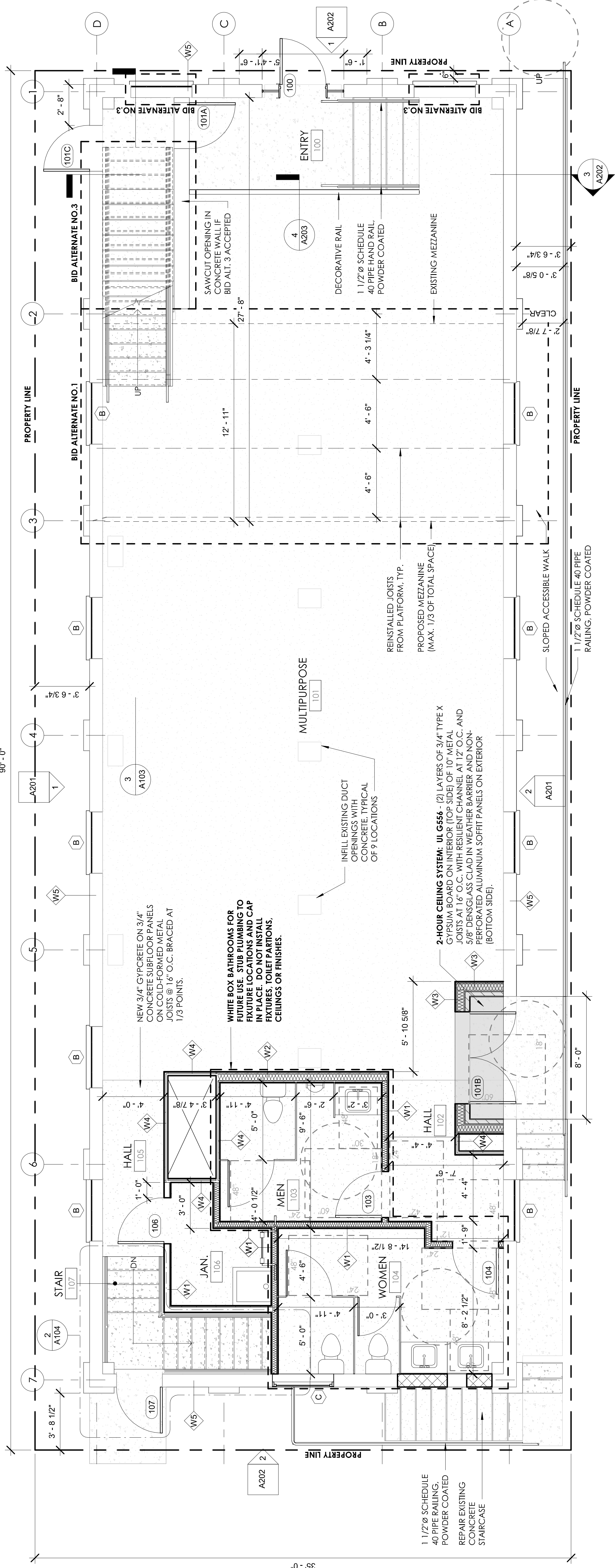
FLOORING MATERIALS LEGEND

- CONCRETE
- GYPCRETE



BASEMENT FLOOR PLAN

1/4" = 1'-0"



FIRST FLOOR PLAN

1/4" = 1'-0"