

BASIS OF DESIGN
MATERIAL DATA

2827 JOHN R STREET

EXTERIOR WALL SYSTEMS

Complete

We are capable of supplying fully tested zinc wall systems including mounting systems and related hardware.

Resilient

Natural
Variety

Local
Zinc

Potential

cladding
Green

Natural

Tested

Modern

Tested

Abundant

Malleable

Beautiful

unique

Recycled

Versatile

Natural

Tested

Modern

Malleable

Zinc

Potential

Abundant

ZN

Recyclable

Compatible

Customizable

resistant

Dependable

Beautiful

Design By
Nature

with NorthClad®
Zinc Series Cladding Options

CONTACT US

www.northclad.com

NorthClad®
rainscreen solutions

Phone: (425) 740-3702
Fax: (425) 485-3503

11831 Beverly Park Road, Building C
Everett, WA 98204

EWS 02

ZINC PANEL WALL SYSTEM: 1 1/4" FORMED ZINC PANEL, 1/4" AIRSPACE, 2" RIGID INSULATION BETWEEN 21/2" Z-GIRTS, WRB, 5/8" DENSGLOSS W/ SEALED JOINTS, 6" METAL STUDS @ 16" O.C. WITH 3" SPRAYED FOAM 06 012 CHARRED CEDAR VERTICAL POLYURETHANE INSULATION, AND 5/8" GYP BOARD

NorthClad®
rainscreen solutions

NorthClad® Zn
Zinc Series Cladding Systems



A naturally occurring, resilient building material.



Zinc Composite Panel System

- Allows for larger panel sizes.
- Flattest option available for zinc.
- Tested pressure equalized rainscreen system.
- Combines the appearance of natural zinc with the flatness of composite.
- Span large distances without warping.

Interlocking Natural Zinc Shingle Panels

- Complete siding system featuring interlocking zinc shingle panels.
- Customizable shingle width and height.
- CNC machinery ensures total accuracy.
- Manufactured with state of the art equipment owned and operated by NorthClad.
- Easy to install.

Formed Natural Zinc Panel System

- Single-skin pressure-equalized rainscreen with interlocking panel design for ease of assembly with no butyl tape required on the panel.
- Proven Wall System, Tested to AAMA 508-7, fabricated by NorthClad.
- Custom sizes allow for endless options.
- Available in stacking or dual-interlocking panel configurations.

100% Recyclable

Zinc, the 23th most abundant element on Earth, has been used for architectural roofing and drainage applications for hundreds of years. With its natural weathering, environmentally friendly properties, and long life time, zinc is quickly becoming the material of choice for modern designers. Our Zn system adds to the natural versatility of zinc by providing architects and designers an array of options utilizing this amazing material.

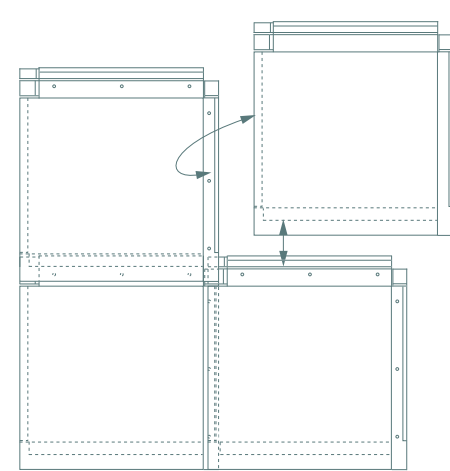
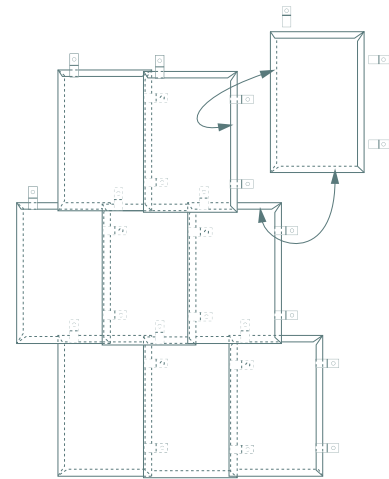
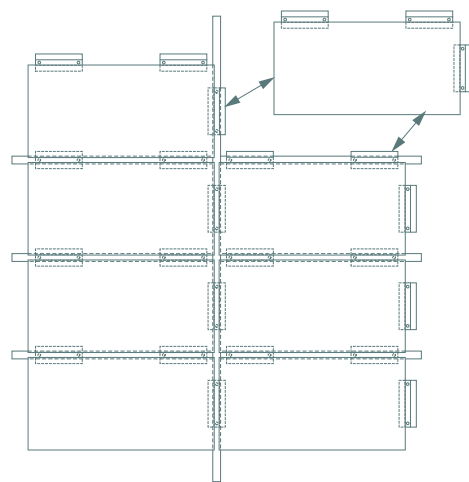
Custom Panel System Design Options

The malleable properties of zinc allow sheet material to be manipulated in ways that cannot be matched by steel or aluminum.

We invite you to take some creative license and envision the perfect facade. We'd love the opportunity to help you make your vision a reality.

Versatile

Our Zn Series features an array of options to accommodate even the most complex design.



+ Interlocking
Composite
Shingles
Custom

Zinc Series Systems





BRICK SPECIFICATIONS



The raw brick that makes up our Glazed Thin Brick is sourced through McNear Brick & Block, the USA’s oldest continuously operating brick manufacture and located only 100 miles from the Fireclay Tile factory. The brick body is made up of 100% reclaimed earth. Brick qualifies for numerous LEED points and is glazed on site at the Fireclay Tile factory in Aromas, CA. As with all hand made tile and brick, some degree of color and size variation is to be expected. Please see the attached Color Guide for a full list of colors and variation.

RECOMMENDED APPLICATIONS

- Can accommodate projects over 100,000 sq.ft.
- Commercial, hospitality and residential settings
- Interiors and exteriors
- Walls, vertical and horizontal surfaces
- Floors, commercial and residential
- Fireplace faces and hearths, not for use inside the fireplace box.
- Contact us or your sales team member to further discuss the details of your project

PHYSICAL PROPERTIES

- Thickness: approx. 5/8"
- Weight: 5.5 lbs per sq.ft.
- Pieces per sq.ft.: 5.9 (assumes 8-1/8" x 2-7/16" size)
- Glazed Thin Brick is available in traditional brick sizes and shapes, including corners. Standard price sizes range from Standard (8-1/8" x 2-7/16") to Modular (7-5/8" x 2-1/4") with corner. Thin brick thickness and size varies up to 1/8".
- Pieces per sq.ft. assumes 3/8" grout joint which is standard in the brick industry. If thinner grout line is desired, please follow guidelines below to ensure enough material is ordered:
 - 3/16" grout line (minimum recommended) - order 20% overage
 - 1/4" grout line - order 16% overage
 - 3/8" grout line - order 10% overage

COLOR INFORMATION

- Available in 28 all-natural and lead-free glazes.
- Natural variation is inherent in color, texture, and finish depending on the specific glaze. Individual color variation is graded V1 (least) to V4 (most). See the attached Color Guide for a full list of colors and variations.
- Custom colors are available for large commercial projects over 5,000 sq.ft. Please contact us so we can best assist you on your next project.

CUSTOM OPTIONS

- Custom colors, sizes, and brick finishes are available. Please contact us with specific details so we can best evaluate the project.

MANUFACTURING INFORMATION

- The original brick production takes place by McNear Brick & Block in San Rafael, CA, just 100 miles away from our Aromas, CA factory. McNear’s brick products contain 100% locally sourced post-consumer recycled materials from local excavation projects.
- Glazed Thin Brick is manufactured by our expert team of ceramicists in Aromas, CA.

LEAD TIMES

- Our lead times vary, please contact our website for current lead times.

SUSTAINABLE DESIGN | LEED CREDITS

- Glazed Thin Brick may qualify for:
 - MR 4.1/4.2: Recycled Content (1–2 points)
 - MR 5.1/5.2: Regional Materials (2 points)
 - EQ 4.2: Low-Emitting Materials (1 point)
- McNear Thin Brick is made from 100% locally sourced and post-consumer recycled materials from surrounding excavation projects.
- All of our glazes are 100% lead-free.
- All products are packaged in recycled cardboard boxes and on recycled pallets or crates. We use recycled sawdust, biodegradable peanuts, or other recycled materials for protection.
- Glazed Thin Brick is substantially lighter than traditional glaze. It costs 85% less than traditional glaze and pre-cast concrete. We recycle and incorporate the waste into our products.
- All of our glazes are lead-free.

EWS 03

FULL BRICK WALL SYSTEM: BRICK, AIR AND WATER BARRIER, 5/8" DENSGLASS W/ SEALED JOINTS, 2" RIGID INSULATION, STRUCTURE, 1" METAL FURRING, SHEET VAPOR BARRIER, 1/2" PTD GYP BOARD

BRICK SPECIFICATIONS

(SUSTAINABLE DESIGN | LEED CREDITS, continued)

- Tile orders are packaged in recycled cardboard boxes and on recycled pallets or crates. We use biodegradable peanuts, and/or other sustainable materials for protection.

INSTALLATION | BRICKFAST & PRECAST PANELS

- Water Absorption: 0.03%
- Physical Dimensions
 - Thickness: 5/8"
 - Weight: 4 lbs per sq.ft.
- Breaking Strength: 420 lbs
- Abrasion Resistance Index: 137.5

COLOR GUIDE

COLOR NAME	COLOR VARIATION	FINISH	CRAZING
Abyss	3	Gloss	Low
Alcatraz	3	Satin	Low
Andromeda	4	Gloss w/Engobe	Low
Blue Nebula	4	Gloss w/Engobe	Low
Ceres	4	Gloss w/Engobe	Low
Cotton	3	Satin	Low
Creme Brulee	3	Gloss	Low
Fog City	3	Gloss	Low
Glacier	3	Gloss	Low
Graphite	2	Matte	Low
Grey Heron	3	Gloss	Low
Harbor	3	Satin	Low
Inkwell	1	Gloss	Low
Luna	4	Gloss w/Engobe	Low
Mars	4	Gloss w/Engobe	Low
Mercury	2	Gloss w/Engobe	Low
Meteorite	2	Gloss w/Engobe	Low
Moss	3	Gloss	Low
Northwoods	3	Gloss	Low
Parakeet	3	Satin	Low
Rust	3	Gloss	Low
Scarlet	3	Gloss	Low
Silk	3	Gloss	Low
Snow	1	Gloss	Low
Stardust	2	Gloss w/Engobe	Low
Supernova	4	Gloss w/Engobe	Low
Vintage Blue	3	Matte	Low
Willow	3	Satin	Low

SIZE GUIDE

BRICK	BRICK (ACTUAL SIZE)	PIECES/SF
Brick Flat	8-1/8" L x 2-7/16" W x 5/8" T	5.9
Standard Corner	8-1/8" L x 2-7/16" W x 5/8" T with 3-7/8" return	—

Building Code Compliant Wall Assemblies

StoPowerwall® Systems incorporate stucco products produced by Sto® or its manufacturing partners that comply with ICC Acceptance Criteria for Cementitious Exterior Wall Coverings (AC 11) and/or ASTM C 926.

Energy efficiency

For meeting energy codes, StoPowerwall ci incorporates up to two inches of Dow STYROFOAM™ Type IV extruded polystyrene (XPS) rigid foam insulation providing an R-value of up to 10. StoPowerwall ci complies with regulatory requirements for continuous insulation over steel and wood framing, including ASHRAE Standard 90.1-2013, the new IGCC/IECC energy code requirements for continuous insulation, and the Title 24 requirements for energy efficiency.

Water management

For water management, StoPowerall ci and StoPowerwall DrainScreen™ Systems incorporate advanced cavity wall design with Sto Drainage Mat and a continuous fluid-applied, vapor-permeable air and moisture barrier, Sto EmeraldCoat®, both listed components in ICC-ESR 1233.

Fire testing compliance

For fire safety, StoPowerall ci and StoPowerwall DrainScreen Systems have been tested in accordance with NFPA 285 and meet acceptance criteria for use on noncombustible construction (Types I-IV) and combustible construction (Type V) as described in ICC-ESR 1233.



Three Premium Systems



	StoPowerwall ci	StoPowerwall DrainScreen	StoPowerwall ExtraSeal®
Substrate Type	Wood, Gypsum sheathing	Wood, Gypsum sheathing	Masonry, Concrete
Air and Moisture Barrier Protection	Uses StoGuard® fluid-applied air and moisture barrier to provide superior protection against water penetration and air leakage. StoGuard EmeraldCoat provides a vapor permeable fluid-applied air and moisture barrier.		Uses Sto ExtraSeal, a single component air barrier barrier and scratch coat for CMU beneath ASTM C 926 stucco brown coats. ¹
Drainage and Drying		Incorporates Sto DrainScreen, a drainage mat that creates an air gap to facilitate drainage and faster drying.	Barrier wall design.
Continuous Insulation	Up to two inches of Dow STYROFOAM™ Type IV XPS (extruded polystyrene) insulation board installed inbound or outbound of sheathing for R-values of 5.0-10.0.	None	None
Stucco	Sto listed stucco (ICC ESR 2323) and stucco produced by Sto's manufacturing partners.		
Finish	Sto Powerflex® Silco: A ready-mixed silicone enhanced elastomeric textured wall finish for covering hairline cracks and enhanced water repellency. Sto Powerflex: A ready-mixed elastomeric textured wall finish for covering hairline cracks. Sto Powerwall: A ready-mixed flexible acrylic textured wall finish with high water vapor permeability. All finishes use marble aggregate—not quartz—for cleanest, most vivid colors.		
Other Components	Sto Armor Guard: Uses woven glass fiber Sto Mesh embedded in Sto base coat to resist cracking.		

EWS 04

1. Only applies to stucco brown coats evaluated for this application by Sto Corp., StoPowerwall Stucco (ICC-ESR 1233) and C

STUCCO WALL SYSTEM: STANDARD THREE-COAT PORTLAND CEMENT PLASTER W ACRYLIC FINISH COAT, LATH, WATER RESISTANT BARRIER, 5/8" DENSGLAS W SEALED JOINTS ON 6" MTL STUDS AT 16", FULL THK INSUL, SHEET VAPOR BARRIER, 5/8" GYP BOARD

STONE SOURCE

STONESOURCE.COM

PIETRA CARDOSA

FINISH: HONED



Product photography and samples are to be used as a general guide. Color as well as percentage, size and shape of markings will vary. Sizes are nominal, not actual.

RELATED INFORMATION:

SEE SLABS

MATERIAL CONSIDERATIONS

Explains what to expect with materials. IF YOU READ NOTHING ELSE, READ THIS.

INVENTORY OVERVIEW

Defines material options and availability.

APPLICATIONS GUIDE

Lists the materials most commonly used in each application.

CARE + MAINTENANCE

Gives guidelines for ensuring that materials last over time.

TECHNICAL PERFORMANCE SPECS

Defines criteria we use to rate the performance of our materials.

MATERIAL: Schist
COLOR RANGE: Gray

INVENTORY				
Availability	Type	Nominal Size	Thickness	Finish
Special Order	Slab	Varies by lot, see stock.	2CM	Honed
Limited Stock	Slab	Varies by lot, see stock.	3CM	Honed

STOCK - Items are generally in stock in select sizes. Inventory levels vary.
LIMITED STOCK - Boutique items. Available in smaller quantities due to material demand and availability.
QUICK SHIP - Items are available in quantities up to 2,000 SF and are available to ship in 7 business days or less.
SPECIAL ORDER - Items are not in stock. Lead times vary. Ask your sales consultant for details.

Refer to Inventory Overview PDF for "Availability" descriptions.

APPLICATIONS							
Exterior Cladding	Exterior Pavers	Interior Walls	Interior Floors	Kitchen Countertops	Other Countertops	Wet Areas	Traffic
Yes	Yes	Yes	Yes	Yes	Yes	Yes	Heavy Commercial

Refer to Applications Guide PDF for descriptions and most commonly used materials by application.

CARE + MAINTENANCE					
Pre-Grouting Protection	Initial Cleaning	Protection Natural Effect	Protection Color Enhancing	Standard Maintenance	Special Maintenance
NA	Fila Cleaner	Fila Fob	Fila Stone Plus	Fila Cleaner	NA

Refer to Care + Maintenance PDF for descriptions and cleaning instructions.

IMPORTANT INFORMATION ABOUT THIS MATERIAL

TECHNICAL PERFORMANCE SPECS	
Rating	<p>ABRASION RESISTANCE (The ability of a material to resist surface wear.)</p>
Low	<p>This material has low abrasion resistance. It rates as a 1-3 on the Mohs scale. Light scratching will occur with exposure to sand and other abrasives. The finish will patina or dull over time as a result of this scratching. Always use a cutting board for countertop applications and walk-off mats at entrances in flooring applications.</p>
Rating	<p>ABSORPTION (The relative porosity of a material.)</p>
Moderate	<p>This material has a low to moderate absorption rate. Always seal this material prior to use. To reduce the appearance of stains, always wipe up spills immediately. Oil and highly-pigmented liquids can penetrate and stain the stone and may need poultice to remove the stain.</p>
Rating	<p>ACID SENSITIVITY (The likelihood of a material reacting to acidic foods or liquids.)</p>
Minimal	<p>This material is minimally sensitive to staining when exposed to acidic liquids such as lemon juice.</p>
Rating	<p>WATER RESISTANCE (The ability of a material to w</p>
All Exteriors	<p>Due to this material's Minimal or Moderate water absorption, fastness and tensile strength, this material is suitable for all exterior applications where freeze-thaw cycles are a concern. Use MIA standards for thickness in exteriors and consult an engineer</p>

EWS 05

STONE VENEER WALL SYSTEM: PIETRA CARDOSA STONE VENEER, AIR AND WATER BARRIER, 5/8" DENSGLASS W/ SEALED JOINTS, 6" METAL STUDS @ 16" O.C. WITH 6" UNFACED BATT INSULATION, SHEET VAPOR BARRIER, 5/8" GYP BOARD, STONE VENEER

BRICK SPECIFICATIONS

The raw brick that makes up our Glazed Thin Brick is sourced through McNear Brick & Block, the USA's oldest continuously operating brick manufacture and located only 100 miles from the Fireclay Tile factory. The brick body is made up of 100% reclaimed earth. Brick qualifies for numerous LEED points and is glazed on site at the Fireclay Tile factory in Aromas, CA. As with all hand made tile and brick, some degree of color and size variation is to be expected. Please see the attached Color Guide for a full list of colors and variation.

RECOMMENDED APPLICATIONS

- Can accommodate projects over 100,000 sq.ft.
- Commercial, hospitality and residential settings
- Interiors and exteriors
- Walls, vertical and horizontal surfaces
- Floors, commercial and residential
- Fireplace faces and hearths, not for use inside the fireplace box.
- Contact us or your sales team member to further discuss the details of your project

PHYSICAL PROPERTIES

- Thickness: approx. 5/8"
- Weight: 5.5 lbs per sq.ft.
- Pieces per sq.ft.: 5.9 (assumes 8-1/8" x 2-7/16" size)
- Glazed Thin Brick is available in traditional brick sizes and shapes, including corners. Standard price sizes range from Standard (8-1/8" x 2-7/16") to Modular (7-5/8" x 2-1/4") with corner. Thin brick thickness and size varies up to 1/8".
- Pieces per sq.ft. assumes 3/8" grout joint which is standard in the brick industry. If thinner grout line is desired, please follow guidelines below to ensure enough material is ordered:
 - 3/16" grout line (minimum recommended) - order 20% overage
 - 1/4" grout line - order 16% overage
 - 3/8" grout line - order 10% overage

COLOR INFORMATION

- Available in 28 all-natural and lead-free glazes.
- Natural variation is inherent in color, texture, and finish depending on the specific glaze. Individual color variation is graded V1 (least) to V4 (most). See the attached Color Guide for a full list of colors and variations.
- Custom colors are available for large commercial projects over 5,000 sq.ft. Please contact us so we can best assist you on your next project.

CUSTOM OPTIONS

- Custom colors, sizes, and brick finishes are available. Please contact us with specific details so we can best evaluate the project.

MANUFACTURING INFORMATION

- The original brick production takes place by McNear Brick & Block in San Rafael, CA, just 100 miles away from our Aromas, CA factory. McNear's brick products contain 100% locally sourced post-consumer recycled materials from local excavation projects.
- Glazed Thin Brick is manufactured by our expert team of ceramicists in Aromas, CA.

LEAD TIMES

- Our lead times vary, please contact our website for current lead times.

SUSTAINABLE DESIGN | LEED CREDITS

- Glazed Thin Brick may qualify for:
 - MR 4.1/4.2: Recycled Content (1–2 points)
 - MR 5.1/5.2: Regional Materials (2 points)
 - EQ 4.2: Low-Emitting Materials (1 point)
- McNear Thin Brick is made from 100% locally sourced and post-consumer recycled materials from surrounding excavation projects.
- All of our glazes are 100% lead-free.
- All products are packaged in recycled cardboard boxes and on recycled pallets or crates. We use recycled sawdust, biodegradable peanuts, or other recycled materials for protection.
- Glazed Thin Brick is substantially lighter than traditional glazed brick, resulting in potentially an 85% cost and emissions reduction. porcelain/glass and pre-consumer materials. we recycle or incorporate in our products.
- All of our glazes are lead-free.

EWS 06

NEW BRICK VENEER WITH AIR AND WATER BARRIER, 2-IN RIGID INSULATION ON EXISTING CMU WALL

BRICK SPECIFICATIONS

(SUSTAINABLE DESIGN | LEED CREDITS, continued)

- Tile orders are packaged in recycled cardboard boxes and on recycled pallets or crates. We use biodegradable peanuts, and/or other sustainable materials for protection.

INSTALLATION | BRICKFAST & PRECAST PANELS

- Water Absorption: 0.03%
- Physical Dimensions
 - Thickness: 5/8"
 - Weight: 4 lbs per sq.ft.
- Breaking Strength: 420 lbs
- Abrasion Resistance Index: 137.5

COLOR GUIDE

COLOR NAME	COLOR VARIATION	FINISH	CRAZING
Abyss	3	Gloss	Low
Alcatraz	3	Satin	Low
Andromeda	4	Gloss w/Engobe	Low
Blue Nebula	4	Gloss w/Engobe	Low
Ceres	4	Gloss w/Engobe	Low
Cotton	3	Satin	Low
Creme Brulee	3	Gloss	Low
Fog City	3	Gloss	Low
Glacier	3	Gloss	Low
Graphite	2	Matte	Low
Grey Heron	3	Gloss	Low
Harbor	3	Satin	Low
Inkwell	1	Gloss	Low
Luna	4	Gloss w/Engobe	Low
Mars	4	Gloss w/Engobe	Low
Mercury	2	Gloss w/Engobe	Low
Meteorite	2	Gloss w/Engobe	Low
Moss	3	Gloss	Low
Northwoods	3	Gloss	Low
Parakeet	3	Satin	Low
Rust	3	Gloss	Low
Scarlet	3	Gloss	Low
Silk	3	Gloss	Low
Snow	1	Gloss	Low
Stardust	2	Gloss w/Engobe	Low
Supernova	4	Gloss w/Engobe	Low
Vintage Blue	3	Matte	Low
Willow	3	Satin	Low

SIZE GUIDE

BRICK	BRICK (ACTUAL SIZE)	PIECES/SF
Brick Flat	8-1/8" L x 2-7/16" W x 5/8" T	5.9
Standard Corner	8-1/8" L x 2-7/16" W x 5/8" T with 3-7/8" return	—



Forming The Future™

PATTERN 16020 Rough Sawn Plank

Rough Grain Plank

Vac-U-Form™

Styrene - Single Use.
ABS Plastic - Up to 15 reuses.

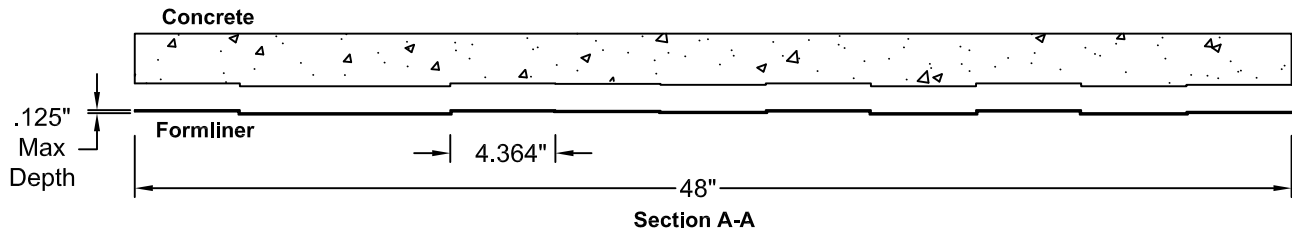
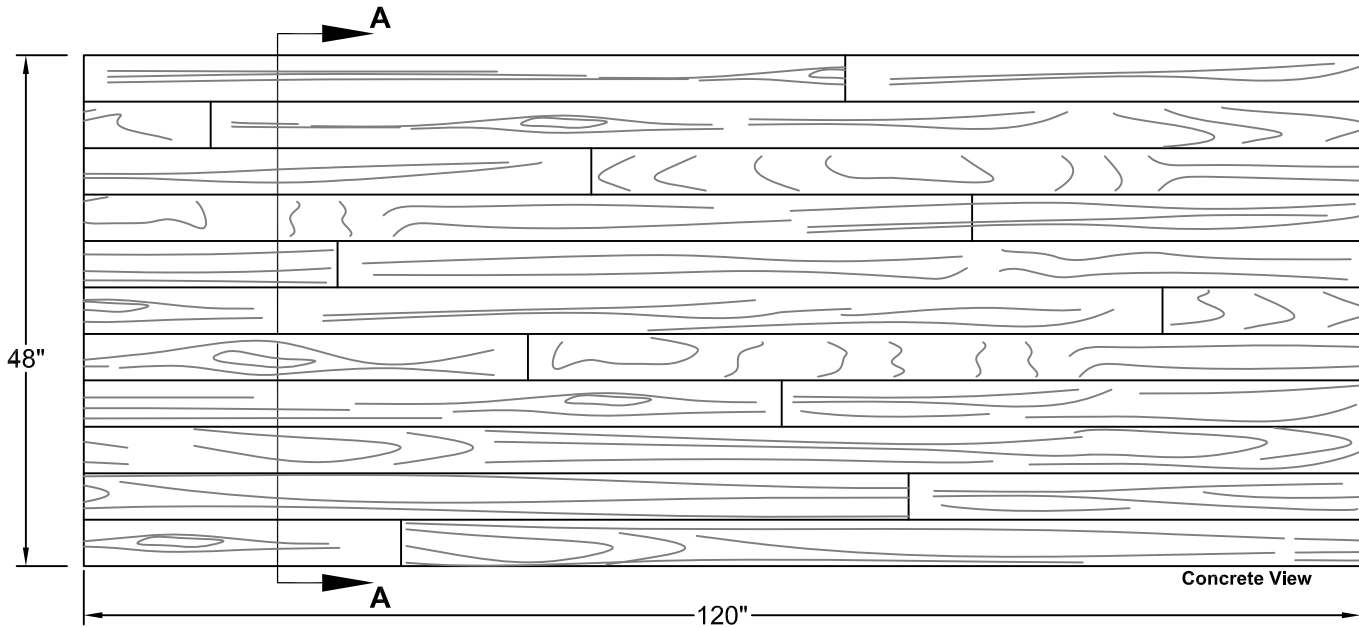
Wooden Plank

Part Size: 120" W x 48" H

Max Depth: 0.125"

Board Width: 4.364

Grain: Rough



FORMLINER DETAIL

EWS 07

PRECAST CONCRETE WALL SYSTEM: WHITE PORTLAND CEMENT WITH FORMLINER

This document contains confidential and proprietary information of Fitzgerald Formliners, Inc. and is protected by copyright, trade secret, and other state and federal laws. Its receipt or possession does not cover any rights to reproduce, disclose its contents, or to manufacture, use, or sell anything it may describe. Reproduction, disclosure, or use without specific written authorization of Fitzgerald Formliners, Inc. is strictly forbidden.

FITZGERALD FORMLINERS

1500 East Chestnut Avenue • Santa Ana, CA 92701 • Fax (714) 245-9715

Ph: (800) 547-7760 • Ph (714) 547-6710 • www.formliners.com

Pattern can be requested in AutoCad format.

File Name: S-16020-VF-1-29-08

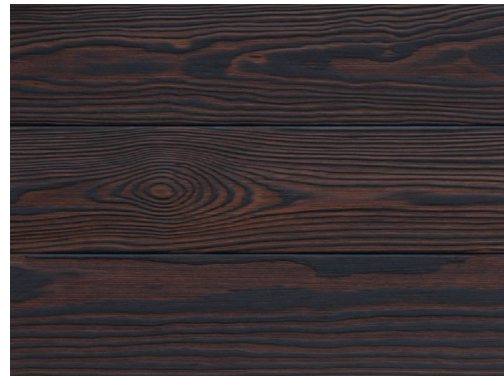
Page 1 of 1



SUPERKÜL - KEBONY® WOOD
SOLID - SKU #CH-750318



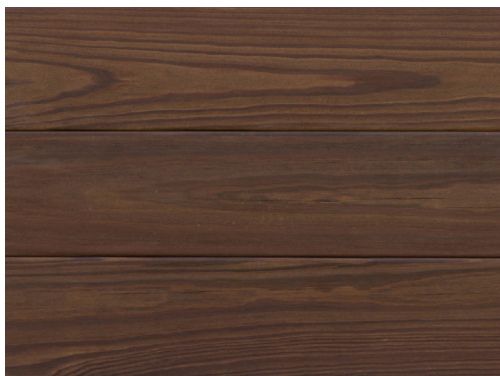
VETTE - KEBONY® WOOD
SOLID - SKU #CH-750332



NOBU - KEBONY® WOOD
SOLID - SKU #CH-750257



MARKA - KEBONY® WOOD
SOLID - SKU #CH-750316



RUSS - KEBONY® WOOD
SOLID - SKU #CH-750317



FAEN - KEBONY® WOOD
SOLID - SKU #CH-750314

Kebony® is a beautiful wood recommended by leading architects. It is sustainable, durable and requires no maintenance beyond normal cleaning. Kebony's performance has been proven in a variety of applications including decking and cladding.

Developed in Norway, the Kebony® technology is an environmentally friendly, patented process, which enhances the properties of sustainable softwood with a bio-based liquid. The process permanently modifies the wood cell walls giving Kebony premium hardwood characteristics and a rich brown color. After exposure to sun and rain the wood develops a natural silver-gray patina..

The Kebony® technology permanently transforms sustainable wood species such as pine into Kebony wood with features that are comparable, and in some cases superior, to those of precious tropical hardwoods. This unique environmentally friendly process is also a superior alternative to traditional wood treatment based on impregnation with biocides (wood preservatives). The company's patent-protected production processes yield products that deliver major improvements in durability and dimensional stability, at the same time as being highly attractive. The Kebony products are suitable for a multitude of applications and designs – encompassing both indoor and outdoor applications.

EWS 08

VERTICALLY ORIENTED 1x8
CHARRED CEDAR BOARDS, MODIFIED
WIDTHS CUT TO PATTERN SHOWN @ 4"
O.C. WITH STEEL CLIP BACKUP SYSTEM
ATTACHED TO EDGE OF SLAB AS
NECESSARY. B.O.D. - reSAWN TIMBER CO.
SHOU SUGI BAN CHARRED CEDAR

Photo Disclaimer: Project and product photos are meant to be a general guide to product appearance only. Due to our handcrafted process and wood being a product of nature, the color, grain pattern, character and profile will vary between individual boards on a project and will never be an exact match.

KEBONY®

Class Rating*: B (ASTM E 84)

Flame Spread Index*: 65 (ASTM E 84)

Smoke Developed Index*: 300 (ASTM E 84)

NOTE: ALL DESIGNS ARE AVAILABLE FIRE TREATED TO CLASS A FOR INTERIOR APPLICATIONS



EXCELLENT STABILITY

swelling and shrinkage reduced by 40-60%



GUARANTEED LONG LIFE

outdoor life time warranty for 30 years



REAL WOOD

with enhanced and strengthened cell structure

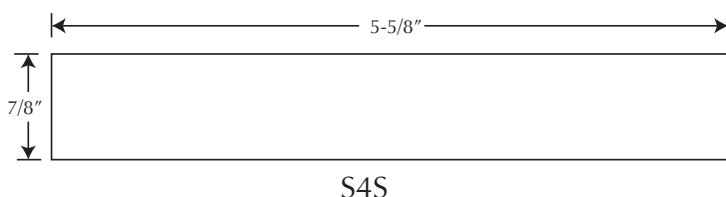


HIGH RESISTANCE

against fungi, rot and other wood destroying micro-organisms

STANDARD DIMENSIONS & MILLING:

- 7/8" thick X 5-5/8" wide X 8-16' random lengths - S4S



NOTE: Custom width, lengths and millings available.

APPLICATIONS:

- EXTERIOR siding (note: for exterior applications we recommend sealing all four sides)
- DECKING - (MARKA & RUSS)

FINISH SPECS:

- EXTERIOR Burned, Brushed, and Sealed on FACE & BACK
- DECKING Unfinished

INSTALL GUIDELINES:

- Rear ventilation and weather acclimatization are vital to minimize swelling & shrinking
- EXTERIOR: Contact reSAWN for Install Instructions
- DECKING: Refer to Kebony Decking Guidelines: http://resawntimber.wpengine.netdna-cdn.com/wp-content/uploads/2017/05/kebono_us_decking_installation_instructions.pdf

GRADES

- SELECT (Highest quality - mostly clean, small knots allowed)
- See reSAWN's CHARRED usage guide for additional details

POSSIBLE LEED CREDITS

- MR 1 - Building Life-Cycle Impact Reduction

PACKAGING AND FREIGHT:

- All shipments are carefully packaged on 16' pallets (Not boxed or bundled)

** Class Rating, Flame Spread Index and Smoke Developed Index per 3rd party testing from the Wood Database. Contact reSAWN for more information.

* Janka Rating from similarly tested products - expected to be close to actual measurements of reSAWN TIMBER co.'s CHARRED™ products

*All data provided by 3rd party testing that can be found on Kebony's product data sheet based on non-CHARRED Kebony products.



WESTERN STATES METAL ROOFING

USA | CANADA | MEXICO | SALES@CORTEN.COM | 855-4CORTEN (855-426-7836)

CORTEN.COM

CORTEN® STRUCTURAL COMPONENTS

ASTM A606-4/A588/A847

IMMEDIATE AVAILABILITY. INEXPENSIVE DELIVERY.

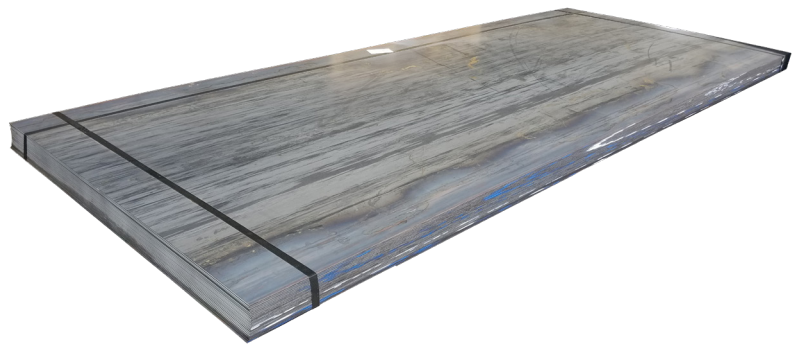
EWS 09

WEATHERING STEEL PANELS, B.O.D.
COR-TEN FLAT STEEL PANELS

FLAT SHEETS

A606-4 AND A588 WEATHERING STEEL

- Available Widths: 48", 60", 72".
- Available Lengths: 96", 120", 144".
- Inquire about sizes that are not shown.



Gauge/Thickness

	22	20	18	16	14	12	11	10	8	3/16"	1/4"	3/8"	1/2"	3/4"
72"										●	●	●	●	●
60"				●	●	●	●	●	●	●	●	●	●	●
48"	●	●	●	●	●	●	●	●	●	●	●	●	●	●
46"	●													
43"	●													
24"	●	●	●											
22"	●													
20"	●													
18"	●													
14"	●													

● In Stock

PLATE

A588 WEATHERING STEEL

- Available Widths: 96".
- Available Lengths: 20', 40'.

Width x Length

	96" x 240"	96" x 480"
3/16"	●	●
1/4"	●	●
5/16"	●	●
3/8"	●	●
1/2"	●	●
5/8"	●	●
3/4"	●	●
1"	●	●
1-1/8"	●	
1-1/4"	●	
1-3/8"	●	
1-1/2"	●	
1-3/4"	●	
2"	●	
>2" - 5"	●	

● In Stock

Inquire about sizes that are not shown.

FLAT BAR

A588 WEATHERING STEEL

- Available Lengths: 20'.

Thickness

	1/4"	3/8"	1/2"	5/8"	3/4"	1"
1"	●	●	●			
1-1/4"					●	
1-1/2"	●	●	●		●	
2"	●	●	●		●	●
2-1/2"	●	●	●			
3"	●	●	●	●	●	●
3-1/2"		●	●			
4"	●	●	●	●	●	●
5"	●	●	●	●	●	
6"	●	●	●	●	●	●
7"		●	●			
8"	●		●			

● In Stock

Inquire about sizes that are not shown.

ANGLE

A588 WEATHERING STEEL

- Available Lengths: 20'
- Inquire about sizes that are not shown.

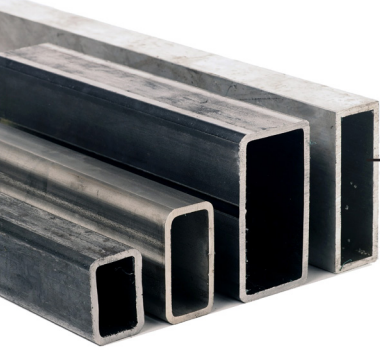


Gauge/Thickness

		1/8" (11 GA)	3/16"	1/4"	5/16"	3/8"	1/2"	5/8"	3/4"	1"
Width	1" x 1"	•								
	1-1/4" x 1-1/4"	•	•							
	1-1/2" x 1-1/2"	•	•	•						
	1-3/4" x 1-3/4"		•							
	2" x 2"	•	•	•	•	•				
	2-1/2" x 2-1/2"		•	•	•	•				
	3" x 2"		•	•		•				
	3" x 3"		•	•	•	•	•			
	3-1/2" x 3-1/2"			•		•	•			
	4" x 3"			•	•	•				
	4" x 3-1/2"			•	•	•	•			
	4" x 4"			•	•	•	•	•	•	
	5" x 3"			•		•	•			
	5" x 3-1/2"			•	•		•			
	5" x 5"				•	•	•		•	
	6" x 4"				•	•	•		•	
	6" x 6"				•	•	•	•	•	•
	7" x 4"				•	•	•			
	8" x 4"						•			
	8" x 8"						•	•	•	•

• In Stock

Inquire about sizes that are not shown.



TUBE/PIPE

A847 WEATHERING STEEL

- A847 tube and pipe are NOT pre-rusted.
- Can be cut to custom lengths if required.
- Inquire about sizes that are not shown.

RECTANGULAR TUBE

A847 WEATHERING STEEL

- Available Lengths: 24' or 48'

		Thickness				
		1/8" (11 GA)	3/16"	1/4"	5/16"	3/8"
Width	3" x 2"	•	•			
	4" x 2"		•	•		
	4" x 3"		•	•		
	5" x 3"			•		
	6" x 2"			•		
	6" x 3"			•		
	6" x 4"			•	•	
	8" x 4"			•		

- In Stock Inquire about sizes that are not shown.

SQUARE TUBE

A847 WEATHERING STEEL

- Available Lengths: 24' or 48'

		Thickness				
		1/8" (11 GA)	3/16"	1/4"	3/8"	1/2"
Width	1" x 1"	•				
	1-1/2" x 1-1/2"	•	•			
	2" x 2"	•	•	•		
	2-1/2" x 2-1/2"		•	•		
	3" x 3"		•	•	•	
	4" x 4"		•	•	•	
	5" x 5"			•		
	6" x 6"		•	•	•	
	8" x 8"			•	•	•
	10" x 10"			•	•	

- In Stock Inquire about sizes that are not shown.

ROUND PIPE

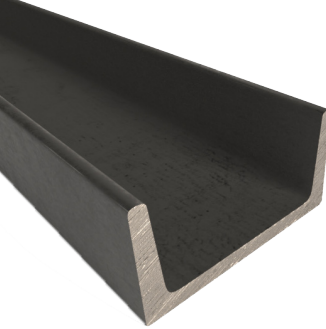
A847 WEATHERING STEEL

- Available Lengths: 21'-0" sections.
- Inquire about sizes that are not shown.



Nominal Pipe Diameter (inches)	Outside Diameter (inches)	Inside Diameter (inches)	Wall Thickness (inches)
1	1.315	1.049	.133
1-1/4	1.660	1.380	.140
1-1/2	1.900	1.610	.145
2	2.375	2.067	.154
2-1/2	2.875	2.469	.203
3	3.50	3.068	.216
3-1/2	4	3.548	.226
4	4.5	4.026	.237
5	5.563	5.047	.250
6	6.625	6.056	.280
8	8.625	7.981	.322

In Stock



CHANNEL

A588 WEATHERING STEEL

- Available Lengths: 20' sections.
- Please inquire for sizes not shown.

Size	Dimensions	Weight Per Ft.
C3	3"x1.41"x.171 Thickness	4.1#
C3	3" x 1.498" x .258 Thickness	5.0#
C4	4" x 1.584" x .184 Thickness	5.4#
C4	4" x 1.721" x .321 Thickness	7.25#
C5	5" x 1.75" x .190 Thickness	6.7#
C5	5" x 1.885" x .325 Thickness	9.0#
C6	6" x 1.92" x .20 Thickness	8.2#
C6	6" x 2.034" x .314 Thickness	10.5#
C6	6" x 2.157" x .437 Thickness	13.0#
C7	7" x 2.09" x .210 Thickness	9.8#
C7	7" x 2.194" x .314 Thickness	12.25#
C8	8" x 2.26" x .220 Thickness	11.5#
C8	8" x 2.43" x .303 Thickness	13.75#
C8	8" x 2.527" x .487 Thickness	18.75#
C10	10" x 2.6" x .240 Thickness	15.3#
C10	10" x 2.739" x .379 Thickness	20.0#
C10	10" x 2.886" x .526 Thickness	25.0#
C10	10" x 3.033" x .673 Thickness	30.0#
C12	12" x 2.942" x .282 Thickness	20.7#
C12	12" x 3.047" x .387 Thickness	25.0#
C12	12" x 3.17" x .510 Thickness	30.0#
C15	15" x 3.4" x .40 Thickness	33.9#

In Stock



ROUNDS/SQUARES

A588 WEATHERING STEEL

- Available Lengths: 20' sections.
- Please inquire for sizes not shown.



Size	Length	Rounds	Squares
1/2"	240"	•	•
5/8"	240"	•	•
3/4"	240"	•	•
7/8"	240"	•	
1"	240"	•	
1-1/8"	240"	•	
1-1/4"	240"	•	
1-3/8"	240"	•	
1-1/2"	240"	•	
1-5/8"	240"	•	
1-3/4"	240"	•	
2"	240"	•	
2-1/4"	240"	•	
2-1/2"	240"	•	
2-3/4"	240"	•	
3"	240"	•	
>3"	Inquire	Inquire	Inquire

• In Stock



LANDSCAPE EDGING

A606-4 WEATHERING STEEL

- Inquire about sizes and gauges not shown.

Size

	4" x 120"	8" x 120"	12" x 120"
Gauge 14	•	•	•
Gauge 11	•	•	•

• In Stock

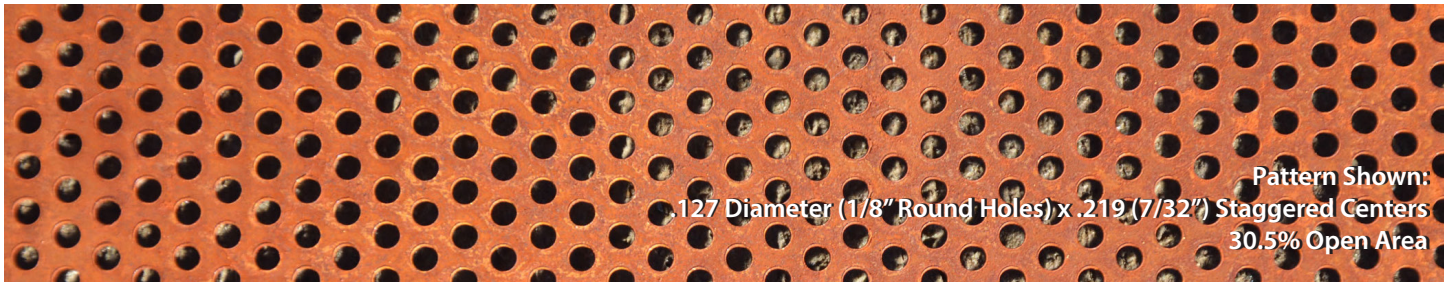
STAKES

Size

	8" Overall (4" Face Coverage)	12" Overall (8" Face Coverage)
Gauge 11	•	•

• In Stock

PERFORATED FLAT SHEETS, COIL, ROOFING AND WALL PANELS



Flat Sheets

- Available Size In Stock: 48" x 120".
- Available Gauges In Stock: 22 GA, 16 GA, 11 GA.
- Custom widths, gauges, and perforation patterns are available upon request.
- Minimum quantities apply.

Coil

- Available Width: 48".
- Available Gauges: 22.
- Custom widths, gauges, and perforation patterns are available upon request.
- Minimum quantities apply.

AVAILABLE PERFORATED PATTERNS

22 GA

.127 Diameter (1/8" Round Holes) x .219 (7/32") Staggered Centers
30.5% Open Area



16 GA

.191 Diameter (3/16" Round Holes) x .297 (5/16") Staggered Centers
32.65% Open Area



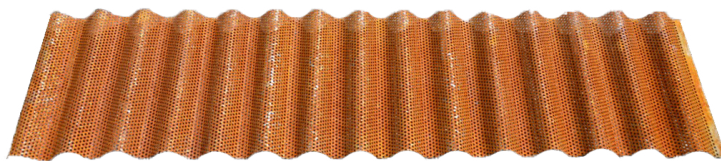
11 GA

.25 Diameter (1/4" Round Holes) x .375 (3/8") Staggered Centers
40.31% Open Area

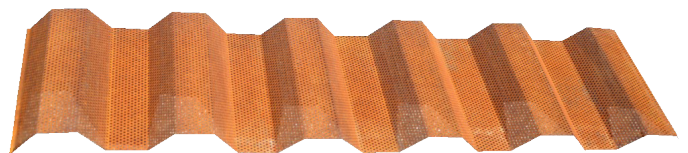


PERFORATED ROOFING AND WALL PANELS

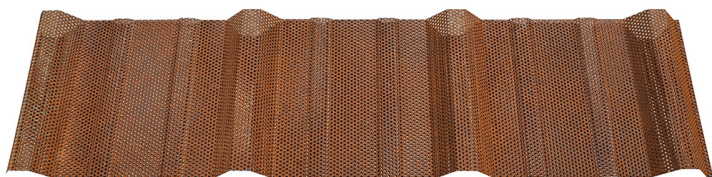
22 Gauge | .127 Diameter (1/8" Round Holes) x .219 (7/32") Staggered Centers | 30.5% Open Area



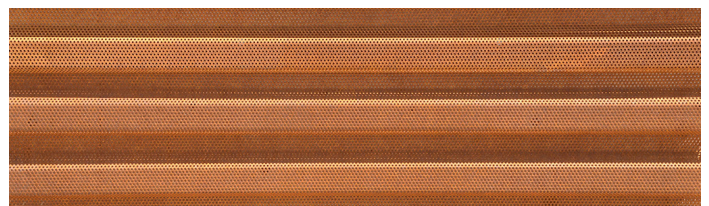
7/8" Corrugated



Western Rib® (7.2 Panel)



PBR/R-Panel



Western Wave®



REAL RUSTED METAL ROOFING & METAL WALL PANELS WEATHERING STEEL

AVAILABLE IN ASTM A606-4 (AKA CORTEN) OR BARE COLD ROLLED

Available Panel Profiles:



7/8" Corrugated



1/2" Corrugated



R-Panel - 1.25" Deep



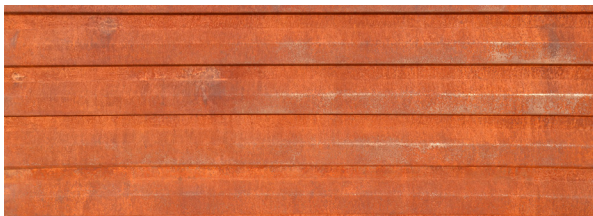
SS675 Standing Seam - 1.75" Deep
Clip System Standing Seam



Western Rib® (7.2 Panel) - 1.5" Deep



RustWall® - 1" Deep
Flush Wall/Soffit Panel



Western Wave® - 7/8" Deep
Horizontal & Vertical Wall Panel



Western Reveal® - 1.5" Deep
Flush Wall/Soffit Panel

8

Material does not arrive pre-rusted. Panel will rust naturally with exposure to the weather.

Western States Metal Roofing | 901 W. Watkins St., Phoenix, AZ 85007 | 855-4CORTEN (855-426-7836) | corten.com | sales@corten.com

© Copyright 2019. Subject to change without notice. Effective 17 May 2019.

4066-19

EXTERIOR GLAZING SYSTEMS



STEEL-*Arte*[®]

ARCHITECTURE IN STEEL

EGS 01

THERMALLY-BROKEN,
INSULATED STEEL
STOREFRONT SYSTEM WITH
LOW-E GLASS. B.O.D. DYNAMIC
ARCHITECTURAL STEEL-ARTE
STOREFRONT



THERMALLY-BROKEN PERFORMANCE WITH NARROW SIGHT LINES

Whether it's the conversion of an industrial warehouse, a landmark building in a historic district or a tightly controlled University specification the combination of glazing flexibility, energy performance and narrow thermally broken profiles is a unique combination.

The profile face features widths from 1" to 1 9/16". The new cold rolled steel in combination with the glass fibre-reinforced high performance composite thermal-break results in minimal heat loss with superior strength and stability when compared to traditional hot rolled profiles. The 2 3/8ths inch deep frame accommodates

a wide range of glass specification flexibility without the need of special setup costs or profiles. Whether it is triple glazed, double glazed or combinations of thicker laminated glass & high performance glasses, the flexibility is unique in the steel window industry.

Steel-Arte is also a superior solution for luxury residential applications. The strength of the Steel-Arte coupled with the narrow profile design is a natural for window walls where the mullions are small and the minimal glass to glass dimension are critical to the clean, crisp geometric look of the aesthetic.



INDEX

	Page
OVERVIEW	
Steel-Arte Introduction	2
Why Choose Dynamic Steel?	4
Steel-Arte Glazing Flexibility	4
High Performance Dual or Triple Insulating Glass	4
Historic Authenticity with Lead Glass Overlay	5
NFRC Certified Glazing Performance	5
AAMA & ASTM Testing: Proven Window & Door Performance	5
WINDOW DETAILS	
OUTSWING	
Casement - Venting or fixed configurations	7
French Casement	8
Awning	10
Awning in Typical Window Wall	11
INSWING	
Casement - Venting or fixed configurations	13
French Casement	14
Hopper	16
Direct Glazed	17
DOOR DETAILS	
OUTSWING	
Steel-Arte Door	19
Stile & Rail Door	21
INSWING	
Steel-Arte Door	24
Stile & Rail Door	26
OPTIONS & ACCESSORIES	
Traditional Casement Profile - for Historic Applications	29
Mullion Reinforcement Options	30
Radius Profiles	31
Drip Cap Options	32
Window Hardware Options	33
Glazing Stop Options	36
WINDOW WALL EXAMPLES	
S1 Glazing Stop Details	38
S3 Glazing Stop Details	50
Steel "L" Glazing Stop Details	56
Typical Installation Details	64



**ARCHITECT'S
Design Guide**
ACCESS NOW >>

WHY CHOOSE DYNAMIC STEEL?

Over the last 20 years Dynamic Architectural Windows & Doors has manufactured custom windows and doors for hundreds of the finest architecturally designed luxury homes and historical restorations in North America. It was only after repeated requests from our best architect and builder customers that Dynamic made the decision to add steel windows and doors to the manufacturing line up. Our customers provided us with a detailed wish list of what was needed in the steel window industry in North America.

Their steel wish list included the following:

- Narrow profiles that would meet the aesthetic design criteria of both the luxury residential and historical replacements markets.
- Thermally broken frames and sash that would reduce the potential for room-side condensation (a repetitive problem with conventional non-thermally broken steel windows).
- Window and door designs that accommodate a wide range of double and triple glazed options, to meet each unique project requirement.
- Third party tested window designs that meet the evolving energy codes, complete with NFRC and AMMA testing.
- Optional third party structural engineering services to provide an extra level of confidence in project specific design performance.
- An industry leading business model with dependable & accurate lead time estimates, concise communication, timely turnaround of shop drawings and clearly defined expectations in all aspects of the window designing and manufacturing process. Dynamic is known for the ability to meet the expectations of this demanding niche.



STEEL-ARTE GLAZING FLEXIBILITY

Narrow sightlines, superior strength and unmatched durability have long been the attractive design components of using steel windows & doors, but these attributes have been often overshadowed by the potential of condensation and poor thermal efficiency.

Dynamic Steel-Arte introduces a unique solution to these design concerns with thermally broken frame & sash components coupled with unmatched glazing flexibility.

The glazing flexibility is an important component of a steel window or doors overall performance. The oversized glazing cavity of the Steel-Arte thermally broken frame & sash allows facilitates glass thicknesses up to 1 3/4 inches.

HIGH PERFORMANCE DUAL OR TRIPLE INSULATING GLASS

The 1 3/4" overall glazing cavity accommodates an unlimited combination of high performance glass types, thicknesses and spacer bar materials. Whether it's thermal performance, sound abatement, security or a combination of performance objectives the flexibility is available to meet the most stringent performance specifications.

HISTORIC AUTHENTICITY WITH LEAD GLASS OVERLAY

The use of applied lead or zinc overlays is a proven technique for replicating the appearance of true leaded glass without the expense and performance issues associated with traditional metal coming or leaded glass.

Dynamic takes Lead Glass Overlay to a higher level by applying the lead or zinc to the exterior and room side of the insulating glass and includes a metal spacer between the two insulating glass surfaces. The internal grid appearance is authentic and when coupled with warm edge spacer bars, argon gas, and a variety of low E coatings; the final performance will meet any of today's stringent energy codes.

Available in a selection of widths and patina colors, the use of Lead or Zinc Glass Overlay with an internal grid is an excellent solution for both historical replacements or luxury residential homes where a narrow muntin is important.



AAMA & ASTM TESTING: PROVEN WINDOW & DOOR PERFORMANCE

In addition to the complete range of European performance testing completed by our Swiss partner at the time of initial design, Dynamic Steel-Arte windows and doors have also independently lab tested for Air, Water, and Structural performance using the recognized North American standard AAMA / WDMA / CSA / 101 / IS2 / A440.



NFRC CERTIFIED GLAZING PERFORMANCE

Dynamic Steel-Arte is one of the few steel windows & doors on the market today that are tested and certified to the NFRC (National Fenestration Rating Council) performance standards. In many areas of the country the state and local building codes are requiring verifiable glazing performance using the NFRC certified labels on each product.





DYNAMIC[®]
Architectural Windows & Doors

Dynamic Architectural Windows & Doors
30440 Progressive Way
Abbotsford, BC Canada V2T 6W3
Toll Free 1.800.661.8111 or email steel@dynamicwindows.com
Fax (604) 864.6072
www.dynamicwindows.com

© Copyright 2012 Dynamic Architectural
Windows & Doors. All rights reserved.

SteelBuilt Curtainwall® SSG System
SteelBuilt Curtainwall Infinity™ SSG System

SteelBuilt Curtainwall SSG and SteelBuilt Curtainwall Infinity SSG steel framing systems provide the smooth, monolithic aesthetic of large glass sizes and free spans without exterior caps. SteelBuilt Curtainwall Infinity SSG can use almost any type of custom steel back member-such as stainless steel, box, I-beams and T-shapes.

The system's glass and cassette components are assembled off site, utilizing fast curing structural silicone. Once installed, toggles hold the glass assembly to the steel framing. The end result is visually appealing façades with expansive free spans, minimal back mullions, large glass sizes, and an uninterrupted surface appearance.

FEATURES

- Offers all the advantages of steel: larger free spans, larger glass sizes, and improved thermal performance
- Uninterrupted exterior sightlines for a smooth monolithic appearance
- Narrow sightlines: 2-3/4" (70 mm) SteelBuilt Curtainwall Infinity SSG System and 2-3/8" (60 mm) SteelBuilt Curtainwall SSG System
- Variety of system depths available
- Steel back mullions can be an infinite number of shapes depending on design criteria
- Available in Series 304 stainless steel
- Infill glazing options ¼" to 2-1/2", depending on size of glazing panel, shape being used, mullion spacing, and design wind load pressures
- Structural silicone glazing promotes optimum sound and heat insulation (eliminates thermal breaks and unnecessary exterior exposed metal)
- Silicone compatible glazing gaskets, creating two lines of air, water resistance and long-lasting seals
- Suitable for mid-rise, and low-rise structures, as feature entry or vestibule walls
- Shear block system for use in hollow vertical to horizontal connections
- Solid shapes (i.e. I-beams, T-profiles, etc.) used as horizontals may require exposed fasteners
- Compatible with SteelBuilt Window & Door® Systems
- Can be integrated into other systems
- Available in 2-sided and 4-sided systems; 2-sided systems have snap-on covers to conceal pressure plate screws (custom extruded aluminum caps available upon request)



TESTING

Frame tests performed in accordance with:

AAMA 501.4-09
Seismic Movement

ASTM E283
Air Performance

ASTM E330
Structural Performance

ASTM E331
Static Water Penetration

EGS 02-03

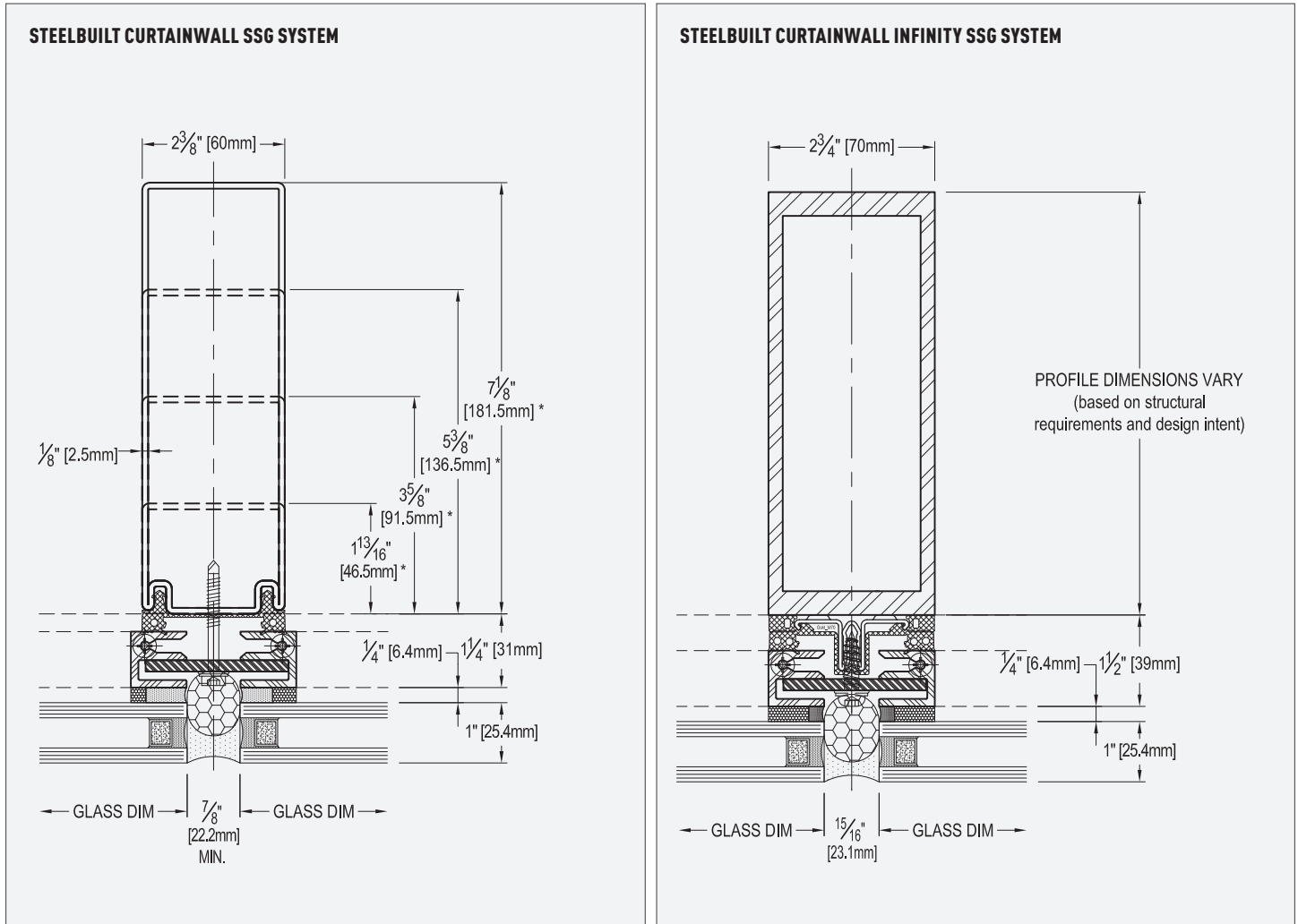
**THERMALLY-BROKEN, INSULATED
INTERNALLY REINFORCED
CURTAINWALL SYSTEM WITH LOW-E
GLASS. B.O.D. TGP STEELBUILT
CURTAINWALL SSG SYSTEM**

THERMAL TRANSMITTANCE (btu/hr + ft² + °F)

FRAMING	GLASS	VERTICAL / HORIZONTAL	MODELED U-VALUE*
STEELBUILT CURTAINWALL SSG FRAMING	1" IGU, both lites clear, 1/2" airspace, Low-E coating on #2 surface	Vertical: 2-3/8" x 7-1/8" rectangle Horizontal: 2-3/8" x 7-1/8" rectangle	0.39

*U-values vary by system framing, sizes, depths, glass sizes and construction. Contact TGP for THERM model analysis of your specific project.

PERIMETER FRAMING SYSTEM



Clear-View Custom Designed Doors



Clear-View custom doors from Wilson bring creativity and functionality together for unique openings in a range of applications. Combining glass with aluminum framing, Clear-View doors add architectural interest most people wouldn't expect from commercial rolling doors.

Wilson is the preferred manufacturer of custom commercial doors among contemporary American architects, specifiers and building professionals.

Completely Customizable

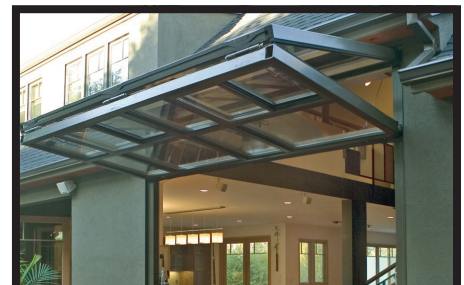
Wilson Clear-View doors are completely customizable to provide the aesthetic your design demands. The doors can be covered with essentially any material (provided by others), and you can choose your preferred door configuration. Let your imagination run wild!

Style with Function

Clear-View doors are constructed of 1/4" thick 6061-T6 Aluminum Alloy tubing. The aircraft grade aluminum frame resists corrosion and maintains a crisp, clean raw aluminum finish for years to come.

IDEAL FOR COMMERCIAL AND RESIDENTIAL INSTALLATIONS

- Open Air Restaurants and Bars
- Retail Store Fronts
- Greenhouses
- Pool Houses
- Residential Patios
- Garages



EGS 07

THERMALLY-BROKEN, INSULATED EXTRUDED ALUMINUM FOLDING WALL SYSTEM WITH LOW-E GLASS: B.O.D SOLAR INNOVATIONS G3 SERIES W SI BRONZE FINISH



Clear-Vue Custom Designed Doors Specifications:



POWER OPERATOR – All electrical controls are designed to meet National Electrical Code Section 513. The gear motor is equipped with an electric brake and will hold the door in any position during its travel. A magnetic starter with momentary pushbutton controls is standard. Heavy-duty rotary limit switch is weather proof. All controls are factory tested.

CONTROL BOX – Momentary contact, 3-button controls (Up/Down/Stop) standard. All electrical components are pre-wired and tested at the factory.

LIFT CABLES – Galvanized steel cables are sized and numerous enough to provide a 5:1 safety factor.

DRIVE SHAFT – The drive shaft is mounted above the door on the header and runs continuously along the entire width of the door. The cable drums are an integral part of the drive shaft, ensuring an even lift of the door at all times. The shaft and drums are heavy-duty galvanized tubing.

MATERIAL CONSTRUCTION – 6061-T6 aircraft aluminum alloy construction is lighter, yet stronger than steel, reducing the need for shoring up the building structure. Simple bolt-together, modular construction.

SEALS – Doors are furnished with full perimeter seals: a soft rubber top seal, neoprene side seals and a bottom loop that hugs the contour of the ground and center seal.

COMPONENTS – Hinges are extruded aluminum. All glazing and covering is provided by others.

LOCKING MECHANISM – A dual handle manual locking mechanism is standard. A "lock switch" is standard and shuts off the power to the motor until the door is unlocked, eliminating the risk of damage. Optional auto-locks lock and unlock the door with a push of a button.

OVER TRAVEL SWITCH – This back-up switch stops the door to ensure the door never exceeds its upper limit.

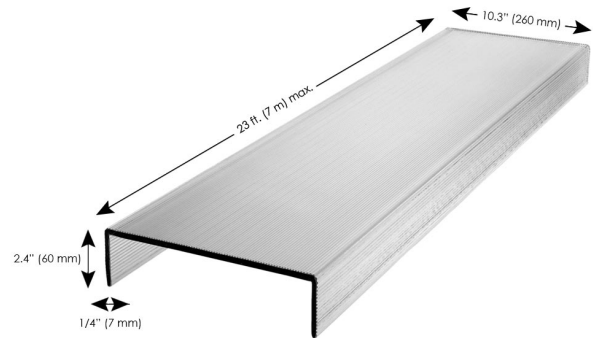
PROGRAMMABLE DRIVE WITH DOOR CONTROLLER – The variable speed drive provides for a smooth start and stop, which minimizes wear on the motor and components. Features Up/Down/Stop buttons.

Please note: Wilson Industrial Doors, does not supply sheathing or framing for the door opening. Wilson Industrial Doors reserves the right to change door specifications without notice.

Wilson Bi-Fold Door Comparison	Premier™	Clear-Vue
CONSTRUCTION		
Aluminum	•	•
STANDARD FEATURES		
Auto locks	•	OPTION
Manual Jamb Locks	OPTION	•
Lift Cable & Drive Mechanism	•	•
Cable Guards	•	
Full Width Drive Shaft	•	•
Weather Seal	•	•
Photo Eye	•	OPTION
Over Travel Switch	•	•
Radio Control	•	OPTION
Programmable Drive w/Controller	•	•
3 Button Controller	•	•
Installation Services Available		•
SIZE/WIDTH LIMITATIONS		
Up to 30 ft.		•
Up to 70 ft.	•	



Moire™ Fluted Channel Glass (Ultra-Brilliant Low-Iron or Regular)



Application:

Interior, Exterior

Composition:

Regular or optically-clear (low-iron) glass, including up to 40% post-consumer recycled glass

Installation:

Approx. ¼"-thick lightweight glass in channel form is relatively easy to install, especially with the smart design of Bendheim's channel glass wall systems. No specialized training is required. Any competent commercial glazier with curtainwall or storefront installation experience can handle the channel glass installation. Cranes are not required, as individual glass channels are lightweight. The channels can be glazed on site or pre-assembled at the glazier's shop using Bendheim's unique unitized channel glass systems.

Approx Dimensions:

Length = up to 23 ft. (7 m); glass is fabricated to specified length. Width = 10.3" (260 mm). Flange depth = 2.4" (60 mm). Thickness = 0.28" (7 mm). Maximum size depends on wind loads, glass safety option, and other factors. Custom sizes may be available, please inquire.

Approx Weight:

Approx. 5 lbs/ft² (24.5 kg/m²) for a single layer of channel glass (single-glazed configuration)

EGS 08

CHANNEL GLASS WALL SYSTEM WITH
CONTINUOUS STRIP LIGHT AT PERIMETER

Safety Options:

Standard, Tempered

Maintenance:

Bendheim glass is easy to maintain. We suggest cleaning with warm water and a lint free cloth (terry cloth). Conventional non-abrasive glass cleaners may also be used.

Performance Characteristics:

- **Visible Light Transmittance (VLT)** = 77% for double-glazed, uncoated, ultra-clear (low-iron) channel glass / 72% for double-glazed, uncoated, clear (regular) channel glass
- **STC Rating** = STC 34 to STC 38 | Note: STC 34 is based on test of Bendheim I-41 conventional interlocking double-glazed channel glass wall system with push-in gaskets. Wet-sealed I-60 channel glass system is projected to reach STC 38. Compare to STC 33 for a typical interior wall (1/2" drywall on each side, wood studs, no insulation) and STC 39 for a typical insulated interior wall (1/2" drywall on each side, wood studs + fiberglass insulation)

Testing:

Bendheim tempered safety channel glass is 100% heat soak tested (test is recommended for all exterior tempered glass applications), and Safety Glazing Council certified. It meets the requirements for ANSI Z97.1 & the Consumer Product Safety Commission CPSC 16FR, Part 1201 – Safety Standard for Architectural Glazing Materials. Heat soak testing minimizes the risk of spontaneous tempered glass breakage as a result of nickel sulfide inclusions.

Potential Leed Credit:

- EA Credit 1: Optimize Energy Performance
- MR Credit 4: Recycled Content
- IEQ Credit 7.1: Thermal Comfort
- IEQ Credit 8.1: Daylight & Views: Daylight 75% of Spaces
- IEQ Credit 8.2: Daylight & Views: Views for 90% of Spaces

Options & Customizations:

Aesthetic & Thermal Performance Options

- Available in ultra-low-iron glass, featuring superior clarity & brilliance, or regular-iron glass (approx. 30-40% post-consumer content)
- Sand-Blast & DuraEtch® Options: sand-blasted 2nd surface and durable, fritted Dura-Etch® (simulated acid etch) obscure views, diffuse light, and protects against glare
- Fritted Colors: a rich palette of hundreds of colorfast, scratch resistant, translucent & opaque colors
- Thermal Performance Coatings: Low-E & Azur (special production)
- Thermal Insulation Interlayers: Okapane (acrylic tubes) & Wacotech TIMax (fiberglass)

Working on a project that requires customizing this product? Custom design is our specialty.
Please contact your [local Bendheim representative](#) to discuss your project and vision.



Fritted colors



Low-E thermal performance coating



Azur thermal performance coating



Channel glass wall with Wacotech insulation

