

**FLOOR PLAN NOTES**

1. ALL NEW INTERIOR WALLS TO BE (2) LAYERS OF 5/8" FIRE-RATED GYP. BD. ON 2X4 (NOM.) METAL STUD, U.O.N.
2. WHERE SPECIFICALLY DIMENSIONED, PARTITION TO BE FURRED OUT AS NECESSARY.
3. ALL EXISTING EXPOSED STRUCTURAL POST TO BE SQUARE-COLADED W/ SIMULFRAME COLLUMN ENCLOSURE SYSTEM OR SIMILAR AS NECESSARY.
4. NEW SLOP SINK, FINAL SPEC BY ARCH
5. NEW CASE MOLDINGS FOR ALL WINDOWS & DOORS, U.O.N. SEE FINISH SPECIFICATION FOR ADDITIONAL INFORMATION
6. REPAIR/PATCH EXISTING SUBFLOOR CONSTRUCTION, PREP AS REQD FOR SPECIFIC FINISH FLOOR APPLICATION.
7. NEW KITCHEN PASS-THROUGH WINDOW, FINAL SPEC BY ARCH.
8. NEW FRONT EXTERIOR DECK, REFER TO SHT. A-9
9. NEW REAR EXTERIOR DECK & LIFT, REFER TO SHT. A-10/A-11/A-12
10. REFER TO ROOM FINISH SCHEDULE FOR KITCHEN WALL FINISH BEYOND THIS POINT
11. AREA OF NEW FLOOR PATCH AS REQD PRIOR TO FINAL FLOOR FINISH
12. FOR KITCHEN EQUIPMENT, REFER TO SHT. A-8
13. AT NEW LOW WALL CONSTRUCTION, REFER TO A-4 FOR ADDITIONAL DIMENSIONAL INFORMATION. ON EXPOSED SIDE FAGING KITCHEN EQUIPMENT, CLAD IN STAINLESS STEEL PANELING, PER STATE & LOCAL CODES.
14. NEW FLOOR FINISH TRANSITION
15. NEW DOOR THRESHOLD-SADDLE AT FLOOR

**FLOOR PLAN LEGEND**

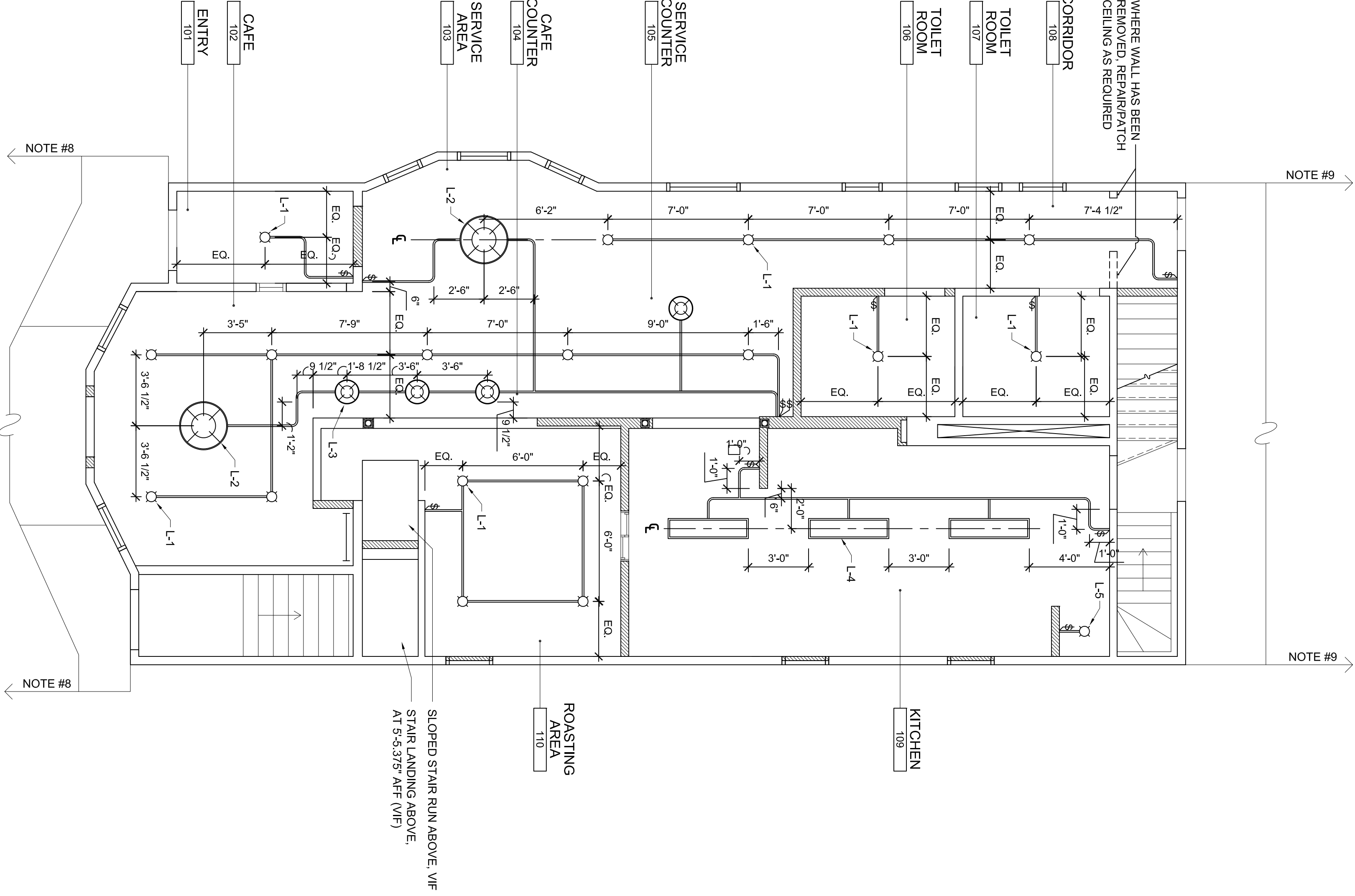
	EXISTING PARTITION OR PERIMETER WALL TO REMAIN
	NEW WALL CONSTRUCTION - 5/8" GYP. BD. ON EACH SIDE OF 2X4 STANDARD WOOD STUDS @ 16" O.C.
	NEW DOOR TYPE, REFER TO DOOR SCHEDULE

**GENERAL REFLECTED CEILING PLAN NOTES:**

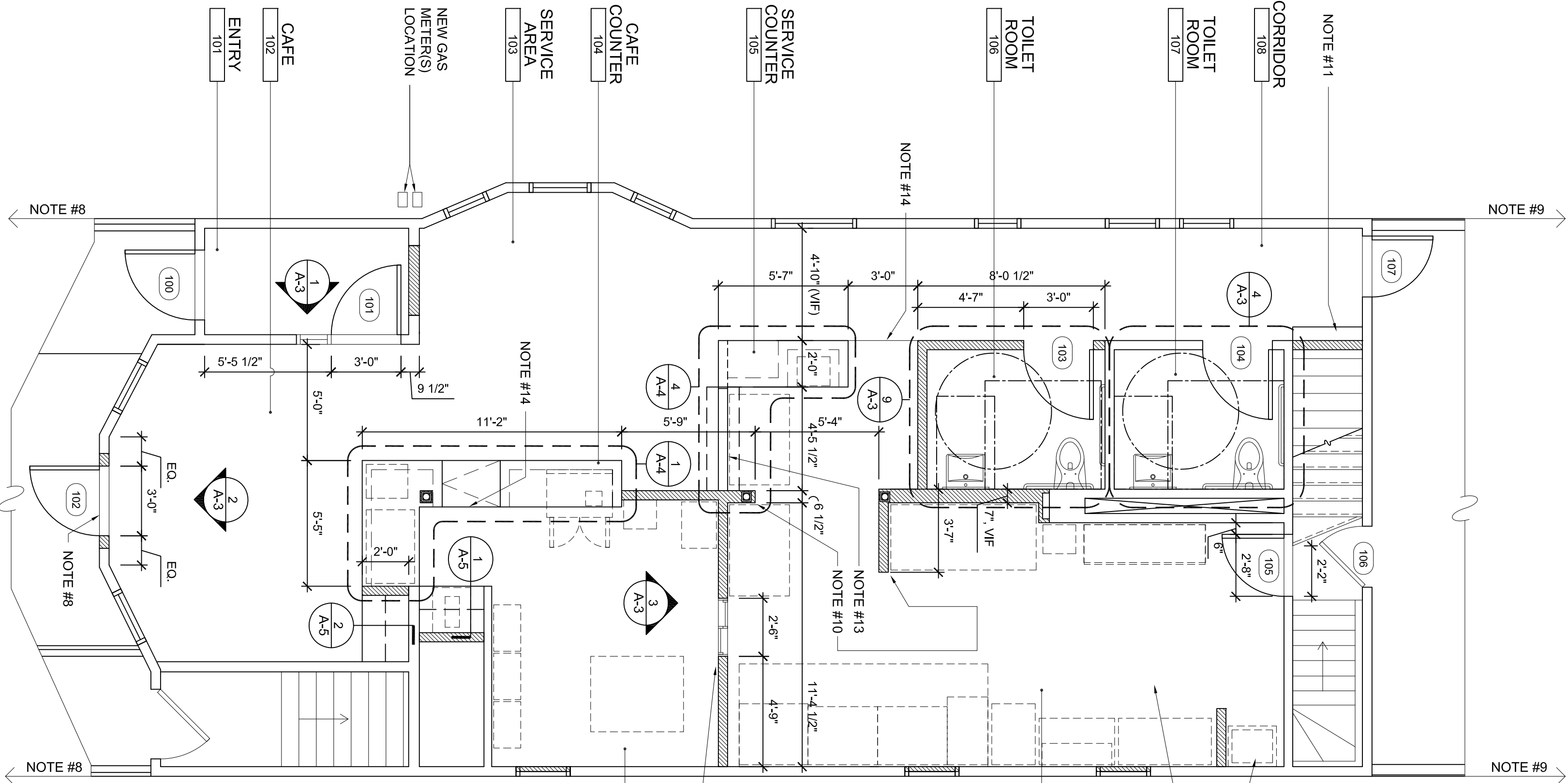
1. ANY AND ALL HOLES, GRACKS AND IMPERFECTIONS ON THE EXISTING GYP. BD. CEILING TO BE REPAIRED, PATCHED, SPACKLED AND SMOOTHED AS NECESSARY FOR FINAL FINISH COATING.
2. EXISTING CEILING HEIGHT TO REMAIN AT 8'-10" - VIF
3. SWITCH SYMBOL INDICATES THE LOCATION FOR SWITCHING ALL FIXTURES WITHIN THAT ROOM UNLESS NOTED OTHERWISE. REFER TO ELECTRICAL DRAWINGS FOR FURTHER INFORMATION AS REQUIRED.
4. REFER TO MECHANICAL, HVAC PLANS FOR DIFFUSER / GRILLE SIZES.
5. FOR LIGHT FIXTURE TYPES SEE ELECTRICAL LIGHTING PLANS.
6. REFER TO DIMENSIONS ON REFLECTED CEILING PLAN TO LOCATE LAYOUT LIGHT FIXTURES, PENDANTS AND EXPOSED CONDUITS
7. ACCESS PANELS TO BE INDEPENDENTLY MOUNTED, DO NOT SUPPORT ON CEILING GRID, COORDINATE SIZE QUANTITY AND LOCATIONS WITH ARCHITECTURAL AND MECHANICAL DRAWINGS.
8. ALL LIGHTING, CONDUITS AND JUNCTION BOXES TO BE SURFACE MOUNTED, U.O.N.
9. ALL METAL CONDUITS TO BE EMT STEEL RACEWAY, U.O.N.
10. ALL SWITCHBOXXES TO BE LOCATED IN LINE W/ CONDUIT LAYOUT AND SURFACE-MOUNTED @ 48" A.F.F., U.O.N.

**REFLECTED CEILING LEGEND**

SYMBOL	DESCRIPTION
	LARGE SUSPENDED LIGHT PENDANT
	MEDIUM SUSPENDED LIGHT PENDANT
	SURFACE MTD. DOWNLIGHT FIXTURE
	TASK LIGHT FIXTURE
	EMERGENCY LIGHT FIXTURE W/ BATTERY SUPPLY
	WALL SWITCH
	EXPOSED SURFACE MTD. ELECTRICAL CONDUIT
	CONDUIT OVERLAPPING CONDUIT
	1X4 TROFFER LED



**2 FIRST FLOOR - REFLECTED CEILING PLAN**  
SCALE: 1/4"=1'-0"



**1 FIRST FLOOR - FLOOR PLAN**  
SCALE: 1/4"=1'-0"