

STAFF REPORT: 10-13-21 MEETING

PREPARED BY: A. DYE

APPLICATION NUMBER: 21-7521

ADDRESS: 19355 PARKSIDE

HISTORIC DISTRICT: SHERWOOD FOREST

APPLICANT: RENEE AND KERRY PASKELL

PROPERTY OWNER: RENEE AND KERRY PASKELL

DATE OF PROVISIONALLY COMPLETE APPLICATION: 10/06/2021

DATE OF STAFF SITE VISIT: 5/20/2021

SCOPE: WINDOW REPLACEMENT

EXISTING CONDITIONS

Constructed in 1951, the ranch-style house is sited on a corner-like lot just north of where Parkside and Renfrew intersect. The house has an irregular footprint that created many multi-planed elevations. The house offers a plethora of distinctive mid-century features, including: a low-pitched hip roof, narrow, grouped windows (steel and jalousie), deep overhangs with flat soffits, geometric forms (including the porch supports and front door), and asymmetrical arrangement of window openings. The majority of the house is clad with brown brick, however narrow and wide stone faces the lower half of the front elevation that turns into a half-wall which extends beyond the west/side elevation. Mid-century site features such as geometrically designed front walkway concrete blocks and an integrated planter create a comprehensive contemporary setting for this highly visible lot in a neighborhood that is dominated by traditional residential architecture.



Image from Motor City Mapping



Image from Detroit Parcel Viewer.

Arrow denotes location where the below photograph was taken.



Looking northwest from Parkside at front and east elevation. HDC staff photo, May 20, 2021 (HDC photos on following two pages).



Walking counterclockwise around the property, the side elevation is broken into two different planes.

Shown below is the rear elevation. The garage wall includes the high silled window and single door; a sunroom is to the right. The rear window opening on the sunroom has a central fixed clear glass window with flanking jalousie windows. The side wall has three mullied jalousie windows.





Above: Main rear elevation of the house.
Right and below: West/side elevation.



HDC Review History

December 20, 2017 HDC Meeting

Request

Replace the side entry door/sidelights (shown at right). Deterioration and security at this entrance were stated as the main reasons for replacement. The HDC questioned:

- whether the new door will completely fill the existing opening,
- if a new door can be ordered to fit the existing opening (retaining the existing ¾ height sidelights).

Action

The Commission approved the replacement with the condition that it be finished in the color that matches the house trim (at that time, it was the recently approved blue-gray).



April 11, 2018 Meeting

Request

Replace the steel windows (shown below); applicant claimed they were sealed shut due to corrosion, wear, neglect and multiple layers of paint, as well as missing hardware. One repair estimate was submitted from GPH Services stating the full restoration of the two openings would cost \$6,800. Proposed replacement windows: Pella Architect Series – left opening changed to a hopper with two vertical muntin bars; right opening changed to a double casement with each glass area to have a central vertical muntin bar.

Action

Commission Chair Anderson said the two openings are “tucked in on the side elevation” and fairly well obscured. Due to the location, and that the proposed replacement windows was sensitive to the design of the existing windows, the Commission issued a Certificate of Appropriateness.



Original steel-framed window sash (casement/fix operation).



Pella replacement windows and replacement door with sidelights. (HDC staff photo, May 20, 2021). Note the replacement door doesn't fully fill the original door opening.

June 4, 2021 Meeting

Request

East Elevation

Replace steel sash double casement with transom. New windows will be two awning windows, with a “cross grill pattern” to replicate the transom/muntin bar patterns.

Front Elevation

Replace wood fixed windows; existing wood mullions to be retained and repaired by the property owner.

Rear Elevation

Replace steel sash two mullied, three part windows (outer casements, center fixed). New windows will be two wide awning windows, each with two vertical muntin bars.

Replacement Windows: Pella Architect Series, wood, aluminum-clad units

Action

Commission issued a COA for the proposed work due lack of economic and technical feasibility for restoration of the existing steel windows.



PROPOSAL

Per the submitted narrative and window orders, the applicant is proposing to replace most of the structure’s remaining existing window units. Taking details from all submitted documents, staff compiled a comprehensive document “Window Review-Overview”, to allow the HDC to easily compare existing to proposed windows from both manufacturers. The overview document immediately follows this staff report.

- Front, Side and Rear (main house) window openings – steel sash to be replaced with Pella Architect Series, wood aluminum-clad sash, white.
- Rear Elevation (stairwell and sunroom) window openings – jalousie aluminum sash to be replaced with Wallside vinyl framed sash, white.

STAFF OBSERVATIONS AND RESEARCH

- The Sherwood Forest local historic district was established in 2002.
- According to the National Park Service’s document [*Replacement Windows that meet the Standards*](#):
 - Replacement windows on primary, street-facing or any highly visible elevations of buildings of three stories or less must match the historic windows in all their details and in material (wood for wood and metal for metal).
 - Replacement windows on secondary elevations that have limited visibility must match the historic windows in size, configuration and general characteristics, though finer details may not need to be duplicated and substitute materials may be considered.
 - While it may be theoretically possible to match all the significant characteristics of a historic window in a substitute material, in actuality, finish, profiles, dimensions and details are all affected by a change in material.

- Window openings not included in this application (shown below):
 - Front Elevation: Single casement (or fixed) sash to right of front entry
 - Rear Elevation: Upper level, middle and right openings, Garage opening (fixed window flanked by casements)



- It is staff's opinion the jalousie windows on the rear elevation are character-defining features on the house. They retain evidence to the era and design of construction as this room may have originally been used as a semi-enclosed porch, as promoted in this 1950 [Ludman](#) jalousie window catalog.

- A jalousie window uses overlapping plates of glass (which are attached with metal clips to window frames) to allow airflow through a full window opening while preventing rain from entering the structure.
- Patented in 1901, these windows became extremely popular in the 1940s and 1950s, becoming synonymous with mid-century design.
- Original jalousie windows can offer challenges of security (slats can be removed) and maintenance/longevity (the non-airtight seals slowly allow moisture and dirt into the window's mechanisms).
- Jalousie windows fell out of favor in the late 1960s-early 1970s, likely due to rising energy costs coupled with the increasing use of residential air conditioning.
- Through some quick internet research, HDC staff identified companies that continue to make jalousie windows which include security features and stronger, more weather-resistant mechanisms. Frame options range from wood, aluminum, and PVC.



ISSUES

- No repair estimate was submitted for the steel windows. Based on the submitted photographs, it is staff's opinion the windows do not appear to be beyond repair.
- When the Commission issued a COA in June 2021 for the replacement of three window openings, one of the Commissioners mentioned he would like to see the new windows installed before considering additional window replacements.
- Staff requested additional details for the following openings posed for replacement:
 - Front Elevation, Great Room window: Will the existing mullions be retained, or is the entire window unit being fabricated in the factory? If the entire opening will be new materials, staff requested dimensions and a section of the new mullion to confirm how closely it will (or won't) match the existing condition.

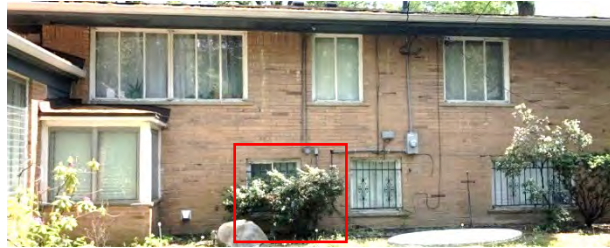


Factory-made mullions are thicker than muntins but often pale in comparison to the dimensionality of historic mullions.



Existing mullions at 19355 Parkside display minimal detailing in keeping with the mid-century design of the house. The width of the wood mullion, in relation to the thinness of the steel sash, is a character-defining detail.

- Rear Elevation, Lower left opening: Dryer vent is proposed for the opening – staff requested catalog cut to confirm material, finish, and design of the vent.



- Vinyl windows are proposed to replace the historic aluminum-framed jalousie windows. As noted below, the alteration to these openings will be dramatic due to the loss of the louvers, increased thickness of the window frames and the loss of the mullion for the north elevation stair window (with the mullion, a strong uniform vertical rhythm of the stair and sunroom windows is present).

<i>Stairwell</i>	<u>Existing</u>	<u>New</u>	<u>Difference</u>
Vertical Sash (Stile)	2"	3 ½"	75% increase
Horizontal Sash (Rail)	2"	3 ½"	75% increase
Mullion	1 ½"	½"	A 1/2" between-the-glass muntin will be placed in the single north elevation window, replacing the two mullied windows.

<i>Sunroom – West Elevation</i>	<u>Existing</u>	<u>New</u>	<u>Difference</u>
Exterior Vertical Sash (Stile)	2"	3 ½"	75% Increase
Interior Vertical Sash (Stile)	2 ½"	3 ½"	40% Increase
Top Horizontal Sash (Rail)	1 7/8"	3 ½"	75% Increase
Bottom Horizontal Sash (Rail)	2"	3 ½"	75% Increase

<i>Sunroom – North Elevation</i>	<u>Existing</u>	<u>New</u>	<u>Difference</u>
Exterior Vertical Sash (Stile)	1 ½"	3 ½"	133% Increase
Interior Vertical Sash (Stile)	2 ½"	3 ½"	40 % Increase
Top Horizontal Sash (Rail)	1 7/8"	3 ½"	75 % Increase
Bottom Horizontal Sash (Rail)	2"	3 ½"	75 % Increase

- Work done without a permit/HDC review. These items are listed a notice only and aren't included with this application.
 - Generators were installed on the front elevation of the house between July 2019 and May 2019. There is no record of this installation being reviewed/approved by the HDC.



Google street view image, July 2018



Google street view image, May 2019

RECOMMENDATION

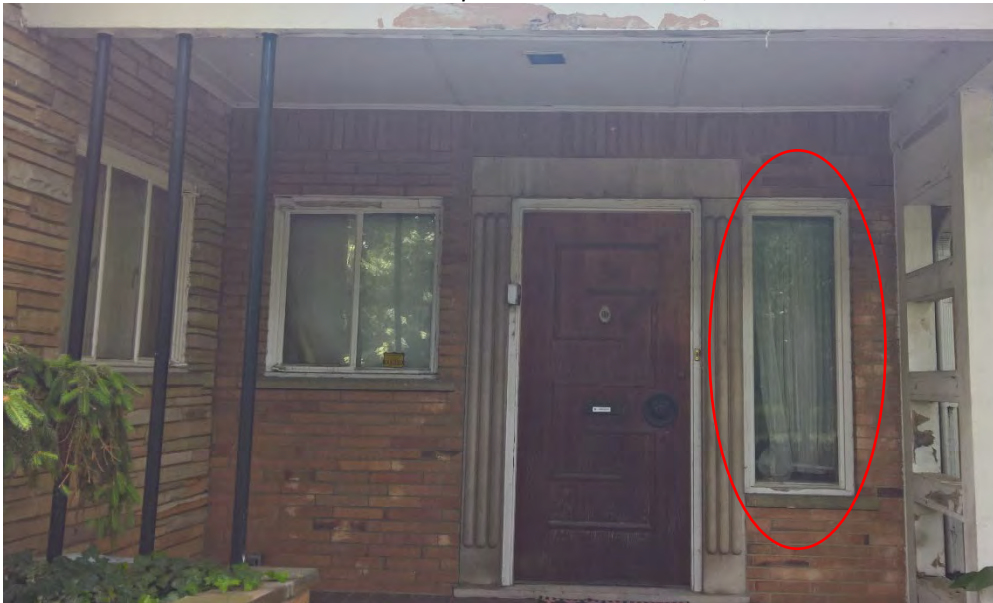
As the applicant has not proven the historic windows have deteriorated to a level that is beyond repair, and the appearance of all window openings would change greatly, it is staff's opinion the replacement of the windows as proposed will alter the features and spaces that characterize the property. Staff therefore recommends the Commission deny a Certificate of Appropriateness for the work as proposed because it does not meet the Secretary of the Interior Standards for Rehabilitation, specifically Standards:

2) The historic character of a property shall be retained and preserved. The removal of historic materials or alteration of features and spaces that characterize a property shall be avoided.

5. Distinctive features, finishes, and construction techniques or examples of craftsmanship that characterize a property shall be preserved.

6. Deteriorated historic features shall be repaired rather than replaced. Where the severity of deterioration requires replacement of a distinctive feature, the new feature shall match the old in design, color, texture, and other visual qualities and, where possible, materials. Replacement of missing features shall be substantiated by documentary, physical, or pictorial evidence.

19355 Parkview – Window Replacement Overview, #21-7521



60 Front Bath: single awning with vertical muntin to replace stationery/casement unit

Line #	Location:	Attributes		Qty
60	FRONT BATH	Architect, Large Awning Vent, White		1
	PK # 2039	1: SizeNon-Standard Size Vent Awning General Information: Standard, Clad, Pine, 5", 3 11/16" Exterior Color / Finish: Painted, Standard Enduraclad, White Interior Color / Finish: Primed Interior Sash / Panel: Ogee, Ogee, Standard Glass: Insulated Dual Tempered Obscure Low-E Obscure Advanced Low-E Insulating Glass Argon Non High Altitude Hardware Options: Fold-Away Crank, Satin Nickel, No Limited Opening Hardware, No Integrated Sensor, Sill Screen: Full Screen, White, InView™ Grille: ILT, No Custom Grille, 7/8", Traditional (2W1H), Ogee, Ogee		



Viewed From Exterior

110 Great Room: single awning with two vertical muntins to replace two stationery/one casement unit

Line #	Location:	Attributes		Qty
110	GREAT RM	Architect, Large Awning Vent, White		1
	PK # 2039	1: SizeNon-Standard Size Vent Awning General Information: Standard, Clad, Pine, 5", 3 11/16" Exterior Color / Finish: Painted, Standard Enduraclad, White Interior Color / Finish: Primed Interior Sash / Panel: Ogee, Ogee, Standard Glass: Insulated Dual Low-E AdvancedComfort Low-E Insulating Glass Argon Non High Altitude Hardware Options: Fold-Away Crank, Satin Nickel, No Limited Opening Hardware, No Integrated Sensor, Sill Screen: Full Screen, White, InView™ Grille: ILT, No Custom Grille, 7/8", Traditional (3W1H), Ogee, Ogee		



Viewed From Exterior

WINDOW TO RIGHT OF DOOR NOT INCLUDED IN APPLICATION

19355 Parkview – Window Replacement Overview, #21-7521



90 TOP LEFT - Master Bedroom: two awnings (each with two vertical muntins) to replace two window units (each comprises two casements flanking a central fixed sash)

Line #	Location:	Attributes	Qty
--------	-----------	------------	-----

90 MSTR FRONT

Architect, 2-Wide Large Awning, White

1



PK #
2039



Viewed From Exterior

1: SizeNon-Standard Size Vent Awning
General Information: Standard, Clad, Pine, 5", 3 11/16"
Exterior Color / Finish: Painted, Standard Enduraclad, White
Interior Color / Finish: Primed Interior
Sash / Panel: Ogee, Ogee, Standard
Glass: Insulated Dual Low-E AdvancedComfort Low-E Insulating Glass Argon Non High Altitude
Hardware Options: Fold-Away Crank, Satin Nickel, No Limited Opening Hardware, No Integrated Sensor, Sill
Screen: Full Screen, White, InView™
Grille: ILT, No Custom Grille, 7/8", Traditional (3W1H), Ogee, Ogee
Vertical Mull 1: FactoryMull, Standard Joining Mullion, Frame To Frame Width- 0", Mull Design Pressure- 20

2: SizeNon-Standard Size Vent Awning
General Information: Standard, Clad, Pine, 5", 3 11/16"
Exterior Color / Finish: Painted, Standard Enduraclad, White
Interior Color / Finish: Primed Interior
Sash / Panel: Ogee, Ogee, Standard
Glass: Insulated Dual Low-E AdvancedComfort Low-E Insulating Glass Argon Non High Altitude
Hardware Options: Fold-Away Crank, Satin Nickel, No Limited Opening Hardware, No Integrated Sensor, Sill
Screen: Full Screen, White, InView™
Grille: ILT, No Custom Grille, 7/8", Traditional (3W1H), Ogee, Ogee

65 – 85 TOP RIGHT - Great Room: Five, three-fixed window units to replace the five, three-window units (four of which are single casements, identified with stars, remaining eleven are fixed sash).

Line #	Location:	Attr
--------	-----------	------

65 GREAT RM 1 OF 5

Support Product, Direct Set Fixed Frame, White



PK #
2039

Viewed From Exterior

1: Fixed Frame
General Information: Interior Glazed, Factory Assembled, Standard, Clad, Pine, 5", 3 11/16"
Exterior Color / Finish: Painted, Standard Enduraclad, White
Interior Color / Finish: Primed Interior
Glass: Insulated Dual Tempered Low-E AdvancedComfort Low-E Insulating Glass Argon Non High Altitude
Grille: SDL, No Custom Grille, 7/8", Traditional (1W3H)




ARE MULLIONS BEING CONSTRUCTED TO MATCH THE DIMENSIONS OF THE EXISTING MULLIONS? OR IS THE ENTIRE WINDOW UNIT BEING FABRICATED IN THE FACTORY? IF THIS IS THE CASE, PLEASE PROVIDE THE DIMENSIONS AND A SECTION (SO WE CAN SEE THE PROFILE) OF THE FACTORY MULLION.


19355 Parkview – Window Replacement Overview, #21-7521




95 TOP RIGHT - single awning with vertical muntin to replace stationary/casement unit

Line #	Location:	Attributes		Qty
95	MSTR SIDE	Architect, Large Awning Vent, White		1
		 Viewed From Exterior	PK # 2039 1: SizeNon-Standard Size Vent Awning General Information: Standard, Clad, Pine, 5", 3 11/16" Exterior Color / Finish: Painted, Standard Enduraclad, White Interior Color / Finish: Primed Interior Sash / Panel: Ogee, Ogee, Standard Glass: Insulated Dual Low-E AdvancedComfort Low-E Insulating Glass Argon Non High Altitude Hardware Options: Fold-Away Crank, Satin Nickel, No Limited Opening Hardware, No Integrated Sensor, Sill Screen: Full Screen, White, InView™ Grille: ILT, No Custom Grille, 7/8", Traditional (2W1H), Ogee, Ogee	



100 TOP MIDDLE – already replaced – no COA

Line #	Location:	Attributes		Qty
100	BLUE BATH	Architect, Large Awning Vent, White		1
		 Viewed From Exterior	PK # 2039 1: SizeNon-Standard Size Vent Awning General Information: Standard, Clad, Pine, 5", 3 11/16" Exterior Color / Finish: Painted, Standard Enduraclad, White Interior Color / Finish: Primed Interior Sash / Panel: Ogee, Ogee, Standard Glass: Insulated Dual Tempered Obscure Low-E Obscure Advanced Low-E Insulating Glass Argon Non High Altitude Hardware Options: Fold-Away Crank, Satin Nickel, No Limited Opening Hardware, No Integrated Sensor, Sill Screen: Full Screen, White, InView™ Grille: ILT, No Custom Grille, 7/8", Traditional (2W1H), Ogee, Ogee Obscure Glass Style: Pattern62(Standard)	

115 BOTTOM LEFT - single casement with vertical muntin to replace stationary/casement unit

Line #	Location:	Attributes		Qty
115	LL BED	Architect, Casement Right, White		1
		 Viewed From Exterior	PK # 2039 1: SizeNon-Standard Size Right Casement General Information: Standard, Clad, Pine, 5", 3 11/16" Exterior Color / Finish: Painted, Standard Enduraclad, White Interior Color / Finish: Primed Interior Sash / Panel: Ogee, Ogee, Standard Glass: Insulated Dual Low-E AdvancedComfort Low-E Insulating Glass Argon Non High Altitude Hardware Options: Side Pivot Hardware, Fold-Away Crank, Satin Nickel, No Window Opening Control Device, No Limited Opening Hardware, No Integrated Sensor Screen: Full Screen, White, InView™ Grille: ILT, No Custom Grille, 7/8", Traditional (2W1H), Ogee, Ogee	

130 & 135 BOTTOM RIGHT - single awning with four vertical muntins to replace two (mulled) stationary/casement units

Line #	Location:	Attributes		Line #	Location:	Attributes	
130	LL 1 OF 2	Architect, Large Awning Vent, White		135	LL 2 OF 2	Architect, Large Awning Vent, White	
		 Viewed From Exterior	PK # 2039 1: SizeNon-Standard Size Vent Awning General Information: Standard, Clad, Pine, 5", 3 11/16" Exterior Color / Finish: Painted, Standard Enduraclad, White Interior Color / Finish: Primed Interior Sash / Panel: Ogee, Ogee, Standard Glass: Insulated Dual Low-E AdvancedComfort Low-E Insulating Glass Argon Non High Altitude Hardware Options: Fold-Away Crank, Satin Nickel, No Limited Opening Hardware, No Integrated Sensor, Sill Screen: Full Screen, White, InView™ Grille: ILT, No Custom Grille, 7/8", Traditional (4W1H), Ogee, Ogee			 Viewed From Exterior	PK # 2039 1: SizeNon-Standard Size Vent Awning General Information: Standard, Clad, Pine, 5", 3 11/16" Exterior Color / Finish: Painted, Standard Enduraclad, White Interior Color / Finish: Primed Interior

TOP LEFT OPENING ON SIDE NOT INCLUDED IN APPLICATION

19355 Parkview – Window Replacement Overview, #21-7521



105 TOP LEFT - second floor; two (factory) mullied awning units (each with two vertical muntins) to replace two window units (each comprised of two casements flanking a central fixed sash)

105 BACK BED

Architect, 2-Wide Large Awning, White



PK #
2039

Viewed From Exterior

1: SizeNon-Standard Size Vent Awning
General Information: Standard, Clad, Pine, 5", 3 11/16"
Exterior Color / Finish: Painted, Standard Enduraclad, White
Interior Color / Finish: Primed Interior
Sash / Panel: Ogee, Ogee, Standard
Glass: Insulated Dual Low-E AdvancedComfort Low-E Insulating Glass Argon Non High Altitude
Hardware Options: Fold-Away Crank, Satin Nickel, No Limited Opening Hardware, No Integrated Sensor, Sill Screen: Full Screen, White, InView™
Grille: ILT, No Custom Grille, 7/8", Traditional (3W1H), Ogee, Ogee
Vertical Mull 1: FactoryMull, Standard Joining Mullion, Frame To Frame Width- 0", Mull Design Pressure- 20

2: SizeNon-Standard Size Vent Awning
General Information: Standard, Clad, Pine, 5", 3 11/16"
Exterior Color / Finish: Painted, Standard Enduraclad, White
Interior Color / Finish: Primed Interior
Sash / Panel: Ogee, Ogee, Standard
Glass: Insulated Dual Low-E AdvancedComfort Low-E Insulating Glass Argon Non High Altitude
Hardware Options: Fold-Away Crank, Satin Nickel, No Limited Opening Hardware, No Integrated Sensor, Sill Screen: Full Screen, White, InView™
Grille: ILT, No Custom Grille, 7/8", Traditional (3W1H), Ogee, Ogee

125 BOTTOM MIDDLE - bath; single awning with vertical muntin to replace one stationery/casement unit

125 PEACH BATH

Architect, Large Awning Vent, White



PK #
2039

Viewed From Exterior

1: SizeNon-Standard Size Vent Awning
General Information: Standard, Clad, Pine, 5", 3 11/16"
Exterior Color / Finish: Painted, Standard Enduraclad, White
Interior Color / Finish: Primed Interior
Sash / Panel: Ogee, Ogee, Standard
Glass: Insulated Dual Tempered Obscure Low-E Obscure Advanced Low-E Insulating Glass Argon Non High Altitude
Hardware Options: Fold-Away Crank, Satin Nickel, No Limited Opening Hardware, No Integrated Sensor, Sill Screen: Full Screen, White, InView™
Grille: ILT, No Custom Grille, 7/8", Traditional (2W1H), Ogee, Ogee

120 BOTTOM RIGHT - three opening (center fixed with flanking casements) unit to replace a three opening unit (center fixed with flanking casements)

120 LL BED

Architect, 3-Wide Casement, White

Qty
1



PK #
2039

Viewed From Exterior

1: SizeNon-Standard Size Left Casement
General Information: Standard, Clad, Pine, 5", 3 11/16"
Exterior Color / Finish: Painted, Standard Enduraclad, White
Interior Color / Finish: Primed Interior
Sash / Panel: Ogee, Ogee, Standard
Glass: Insulated Dual Low-E AdvancedComfort Low-E Insulating Glass Argon Non High Altitude
Hardware Options: Wash Hinge Hardware, Fold-Away Crank, Satin Nickel, No Window Opening Control Device, No Limited Opening Hardware, No Integrated Sensor
Screen: Full Screen, White, InView™
Grille: No Grille,
Vertical Mull 1: FactoryMull, Standard Joining Mullion, Frame To Frame Width- 0", Mull Design Pressure- 20

2: SizeNon-Standard Size Fixed Sash Set
General Information: Standard, Clad, Pine, 5", 3 11/16"
Exterior Color / Finish: Painted, Standard Enduraclad, White
Interior Color / Finish: Primed Interior
Sash / Panel: Ogee, Ogee, Standard
Glass: Insulated Dual Low-E AdvancedComfort Low-E Insulating Glass Argon Non High Altitude
Grille: No Grille,
Vertical Mull 2: FactoryMull, Standard Joining Mullion, Frame To Frame Width- 0", Mull Design Pressure- 20

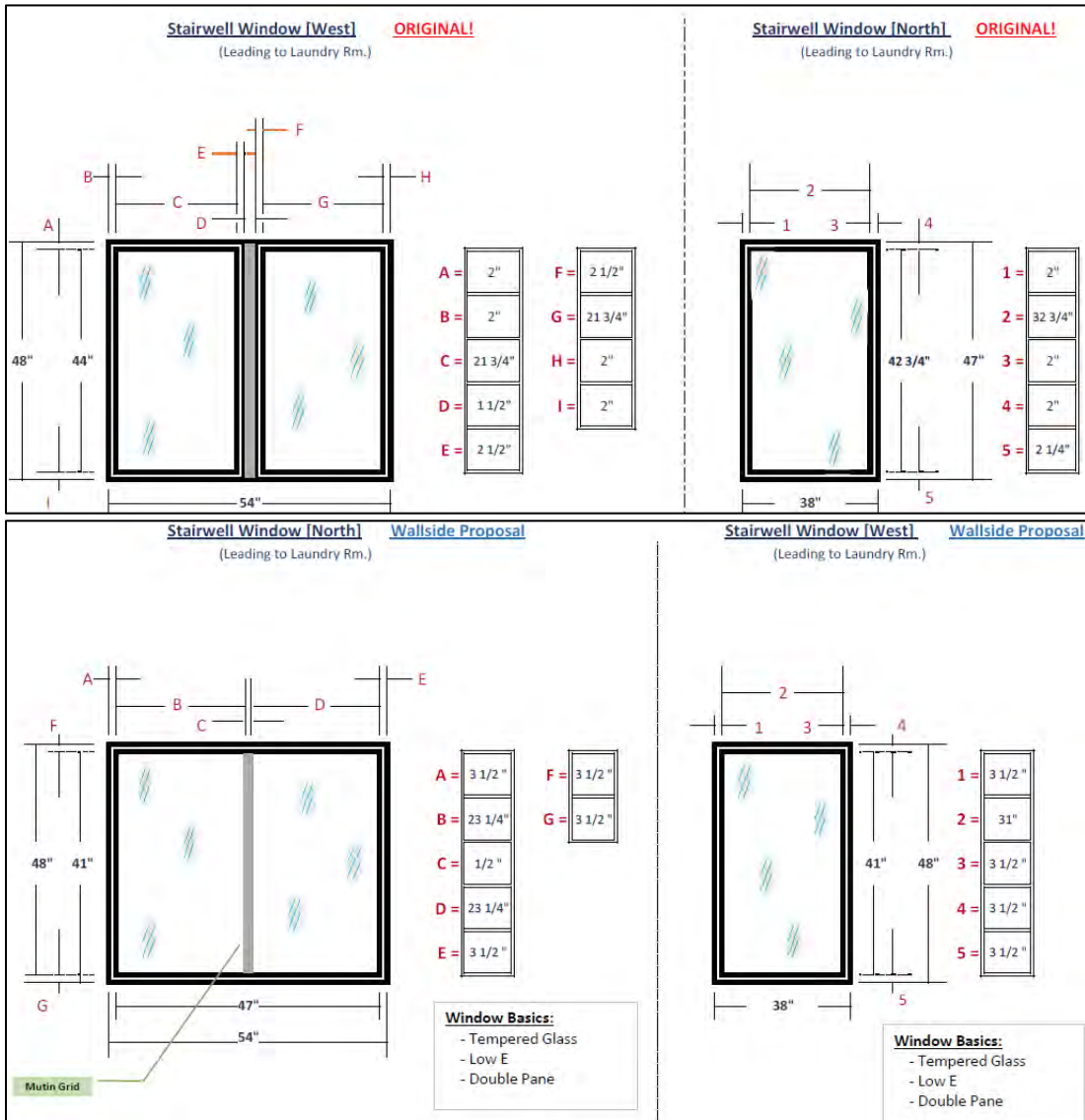
3: Size Right Casement
General Information: Standard, Clad, Pine, 5", 3 11/16"
Exterior Color / Finish: Painted, Standard Enduraclad, White
Interior Color / Finish: Primed Interior
Sash / Panel: Ogee, Ogee, Standard
Glass: Insulated Dual Low-E AdvancedComfort Low-E Insulating Glass Argon Non High Altitude
Hardware Options: Wash Hinge Hardware, Fold-Away Crank, Satin Nickel, No Window Opening Control Device, No Limited Opening Hardware, No Integrated Sensor
Screen: Full Screen, White, InView™
Grille: No Grille,

140 BOTTOM LEFT – one stationery/casement unit to be replaced with laundry vent
NEED CATALOG CUT TO CONFIRM DESIGN AND FINISH

TOP MIDDLE AND RIGHT, TWO OPENINGS ON REAR, NOT INCLUDED IN APPLICATION

19355 Parkview – Window Replacement Overview, #21-7521

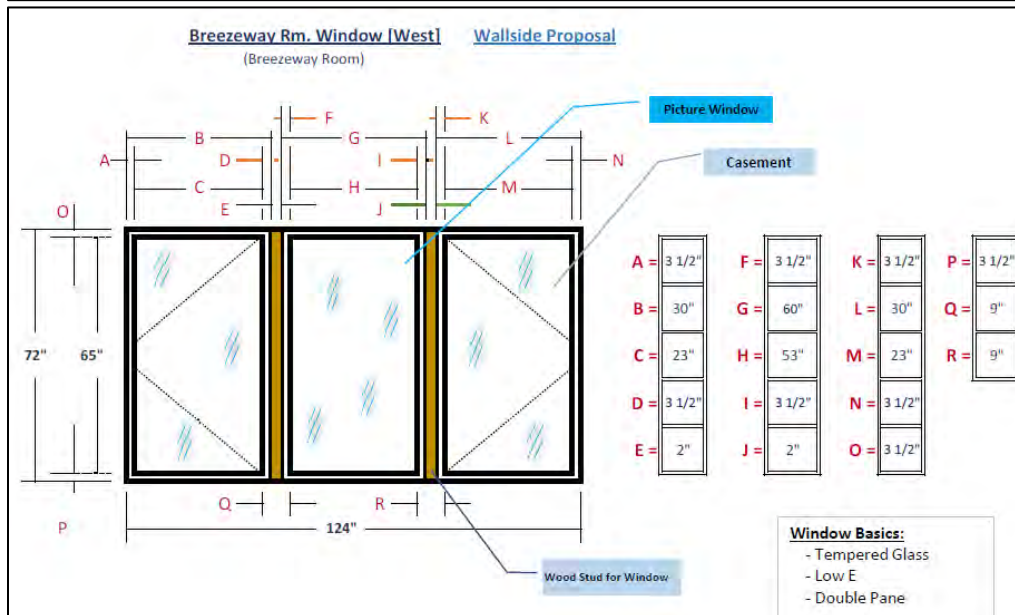
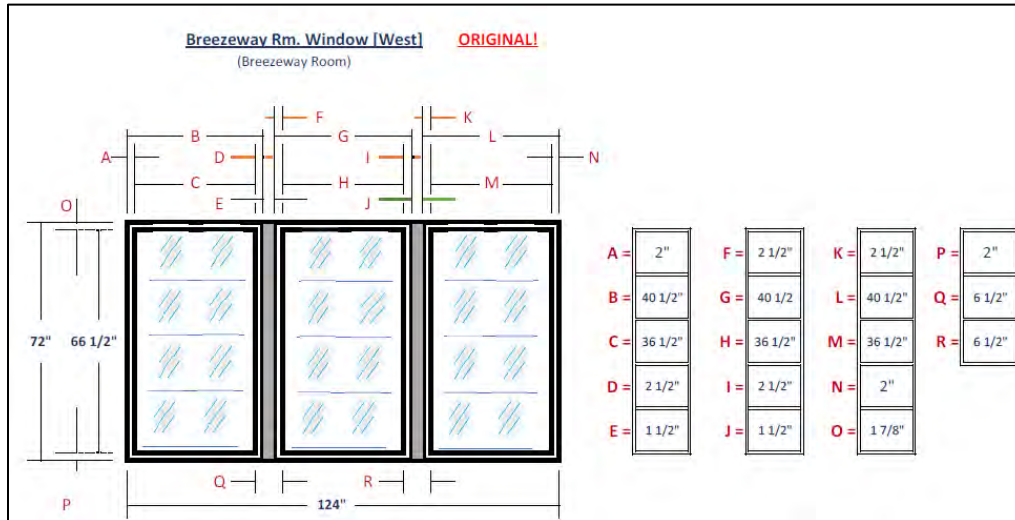
BW 1 & 2 - Stairs



	Existing	New	Difference
Vertical Sash (Stile)	2"	3 1/2"	75% increase
Horizontal Sash (Rail)	2"	3 1/2"	75% increase
Mullion	1 1/2"	1/2"	The 1 1/2" wide structural mullion will be replaced with a 1/2" wide between-the-glass muntin.

19355 Parkview – Window Replacement Overview, #21-7521

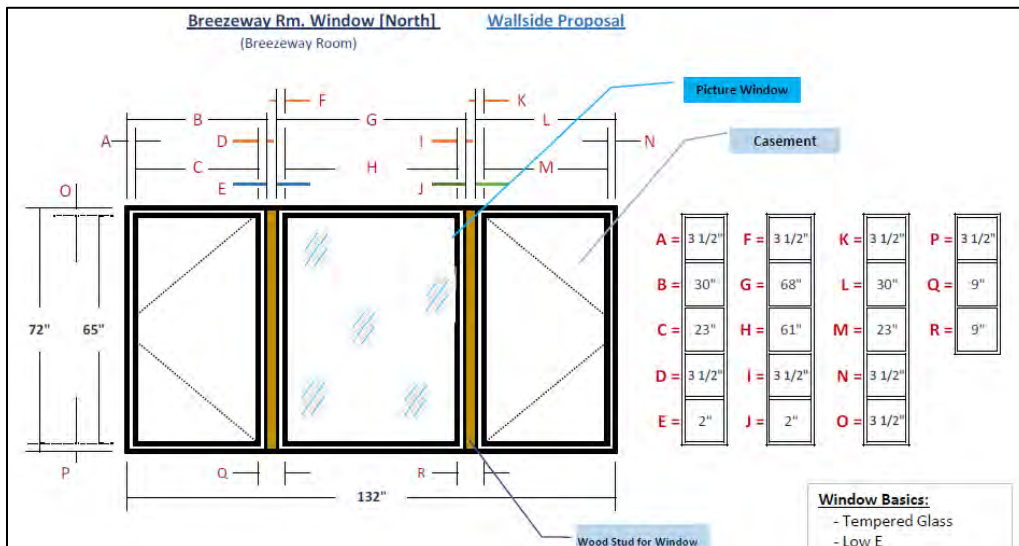
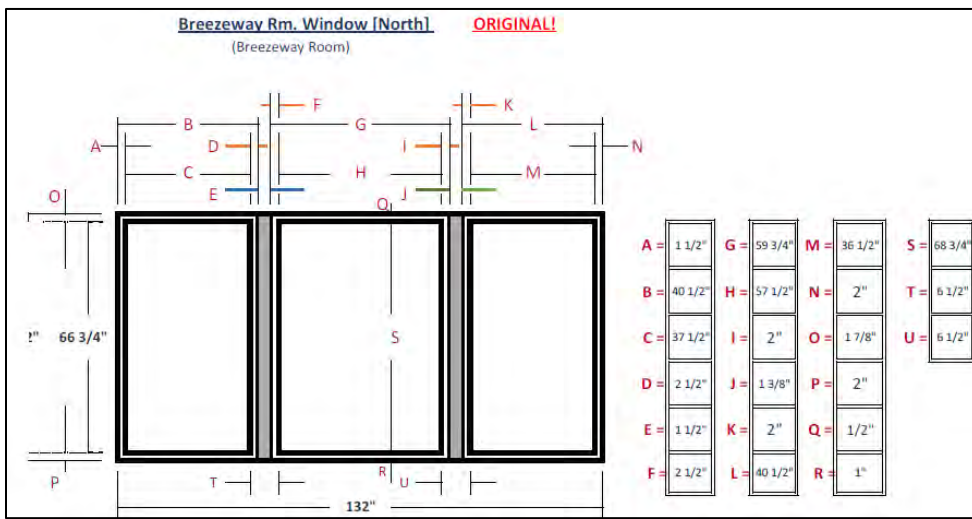
BW3 – West triple opening



	<u>Existing</u>	<u>New</u>	<u>Difference</u>
Exterior Vertical Sash (Stile)	2"	3 1/2"	75% Increase
Interior Vertical Sash (Stile)	2 1/2"	3 1/2"	40% Increase
Top Horizontal Sash (Rail)	1 7/8"	3 1/2"	75% Increase
Bottom Horizontal Sash (Rail)	2"	3 1/2"	75% Increase

19355 Parkview – Window Replacement Overview, #21-7521

BW4 – North Triple opening (center picture)



	Existing	New	Difference
Exterior Vertical Sash (Stile)	1 1/2"	3 1/2"	133% Increase
Interior Vertical Sash (Stile)	2 1/2"	3 1/2"	40 % Increase
Top Horizontal Sash (Rail)	1 7/8"	3 1/2"	75 % Increase
Bottom Horizontal Sash (Rail)	2"	3 1/2"	75 % Increase

Detroit Historic Commission

19355 Parkside St., Detroit, MI – Sherwood Forest

This DHC approval request is to complete the window replacement project for the remaining windows at the Paskell House. The project is split into two packets as we have selected two providers. Pella to provide customized windows for the remaining front and side windows on the main structure built in 1951. Wallside to provide windows for the addition on the rear of the house built in the 1970s.

Pella - Window Replacements (provide the following):

1. The kind of material of the (current) windows on the house (i.e., vinyl, wood, or steel).
 - a. The material of the all the windows is steel and glass.
2. The number of windows being replaced.
 - a. The current number of windows being replaced is 13 Windows
 - i. Note: One of the windows in the Great Room is comprised of fifteen panes to make up one window (see page 12/28 line #65 – 85).
3. Clearly identify each window being replaced.
 - a. Pella Replacements

Line #	Pella Window & Description
60	Front bath – on the front of the house; single pane awning with mullions – replaces a single pane stationery and casement
65 - 85	Great room – on the front of the house; fixed window comprised of a set of 5/3 single panes – replaces same with four single casements
110	Great room – on the front of the house; single pane awning – replaces two stationery one casement
90	Master bedroom – on the front of the house; two awnings – replaces two casements with three panes each
95	Master bedroom side – on the side of the house; single pane awning with mullion - single pane awning – replaces two stationery one casement
100	Blue bath – second floor hall; single pane awning - replaces a single pane stationery and casement
105	Back bedroom – second floor; two awnings – replaces two casements with three panes each
115	Lower-level bedroom – side; 1:1 replacement of stationery single pane and casement
120	Lower-level bedroom – rear side; 1:1 replacement of stationery single pane and two outside casements
125	Peach bath – rear side; single pane awning – replaces two stationery one casement

Detroit Historic Commission

19355 Parkside St., Detroit, MI – Sherwood Forest

Line #	Pella Window & Description
130 - 135	Lower-level – side of house; single pane awning replaces four single panes with two casements
140	Laundry room – back side of house; single pane awning – replaces one stationery one casement

- b. Wallside Replacements are for the addition on the rear of the home (approximate build 1970s).

Window	Wallside Description
BW1 – West (Stairwell)	Two single panes replace two side by side jalousies
BW2 – North (Stairwell)	One single pane replaces jalousie
BW3 – West	Single pane center with two outside casements replaces of single pane center with two outside jalousie casements
BW4 - North	Single pane center with two outside casements replaces of single pane center with two outside jalousie casements



4. Provide photos of each window being replaced.
 - a. See attached (PellaPics.zip and WallsidePics.zip).

5. The material of the replacement windows.
 - a. The replacement window material for windows is the Pella Architect Traditional Series casement/windows, aluminum clad exterior with pine wood to resemble what is existing.
 - b. The replacement window material for Wallside casement/windows, aluminum exterior with pine wood.

6. As you are proposing to change the material of the windows, this will change the appearance of the house. Therefore, additional information on the current condition of the existing windows will be needed as to why the windows cannot be repaired.
 - a. At present all windows in the house are sealed shut due to corrosion, wear, neglect, and multi-coats of paint, along with missing hardware. We have been advised by all repair/replacements companies that repair is not an option because of the above the age and disrepair.

 - b. Window restoration companies have said they are irreparable, cannot be restored to original state or be heat and energy efficient. With the changes in technology and availability of parts it is more cost effective to replace vs. repair. None however will put that in writing.

- c. Received DHC approval for replacement of windows in 2017 and in June 2021 using the same Pella series and plan to continue with the same style and quality. This project is to complete the window replacement project on the Paskell house.
7. Product Information on the selected window, the width of the frames and the width of the existing steel frames, and details on the proposed operation of the windows - will they be casements, sliders, fixed?
- a. See attached (PellaProposal.pdf and WallsideProposal.pdf)
8. Will the transoms be fabricated for the larger openings that currently have side-by-side double casements?
- a. N/A

Line #	Location:	Attributes	Qty
55	LIVING FRONT 8 OF 8		1
			
	PK # 2039		
	Viewed From Exterior		
<p>Support Product, Direct Set Fixed Frame, White</p> <p>1: Fixed Frame General Information: Interior Glazed, Factory Assembled, Standard, Clad, Pine, 5", 3 11/16" Exterior Color / Finish: Painted, Standard Enduraclad, White Interior Color / Finish: Primed Interior Glass: Insulated Dual Low-E AdvancedComfort Low-E Insulating Glass Argon Non High Altitude Grille: No Grille.</p>			
<p>Customer Notes: POCKET INSTALL PER CUSTOMER REQUEST.</p> <p>MINI TRIM EXTERIOR AND DOING UNDER SOFFIT. WE ARE NOT DOING THE CURVED PORTION NOR COVERING SPREAD MULLS. OK PER CUSTOMER.</p> <p>CUSTOMER TO DO WOOD REPAIR AND PRIME PAINT EXTERIOR AS NEEDED BEFORE INSTALLATION.</p> <p>QUOMATDETM040100 - Coil (LF) Qty 14</p> <p>QUOMATDETM010074 - PF Cove/Stop Pine or Oak Qty 14</p> <p>INSTARDETR010004 - Wood Drywall Return Qty 14</p>			
Line #	Location:	Attributes	Qty
60	FRONT BATH		1
			
	PK # 2039		
	Viewed From Exterior		
<p>Architect, Large Awning Vent, White</p> <p>1: SizeNon-Standard Size Vent Awning General Information: Standard, Clad, Pine, 5", 3 11/16" Exterior Color / Finish: Painted, Standard Enduraclad, White Interior Color / Finish: Primed Interior Sash / Panel: Ogee, Ogee, Standard Glass: Insulated Dual Tempered Obscure Low-E Obscure Advanced Low-E Insulating Glass Argon Non High Altitude Hardware Options: Fold-Away Crank, Satin Nickel, No Limited Opening Hardware, No Integrated Sensor, Sill Screen: Full Screen, White, InView™ Grille: ILT, No Custom Grille, 7/8", Traditional (2W1H), Ogee, Ogee</p> <p>Obscure Glass Style: Pattern62(Standard)</p> <p>QUOMATDETM010079 - 4 7/16 Stool for a 6 9/16 Wall Pine Qty 4</p> <p>QUOMATDETM040100 - Coil (LF) Qty 13</p> <p>QUOMATDETM010074 - PF Cove/Stop Pine or Oak Qty 13</p> <p>INSTARDETR900004 - Steel Cut Out Qty 1</p>			

INSTARDETR010004 - Wood Drywall Return Qty 13

Line # Location: Attributes

65 GREAT RM 1 OF 5

Support Product, Direct Set Fixed Frame, White



1: Fixed Frame
 General Information: Interior Glazed, Factory Assembled, Standard, Clad, Pine, 5", 3 11/16"
 Exterior Color / Finish: Painted, Standard Enduraclad, White
 Interior Color / Finish: Primed Interior
 Glass: Insulated Dual Tempered Low-E AdvancedComfort Low-E Insulating Glass Argon Non High Altitude
 Grille: SDL, No Custom Grille, 7/8", Traditional (1W3H)

PK #
2039

Viewed From Exterior

Qty
1



- QUOMATDETM010079 - 4 7/16 Stool for a 6 9/16 Wall Pine Qty 4
- QUOMATDETM040100 - Coil (LF) Qty 23
- QUOMATDETM010074 - PF Cove/Stop Pine or Oak Qty 23
- INSTARDETR900004 - Steel Cut Out Qty 1
- INSTARDETR010004 - Wood Drywall Return Qty 23

Line # Location: Attributes

70 GREAT RM 2 OF 5

Support Product, Direct Set Fixed Frame, White



1: Fixed Frame
 General Information: Interior Glazed, Factory Assembled, Standard, Clad, Pine, 5", 3 11/16"
 Exterior Color / Finish: Painted, Standard Enduraclad, White
 Interior Color / Finish: Primed Interior
 Glass: Insulated Dual Tempered Low-E AdvancedComfort Low-E Insulating Glass Argon Non High Altitude
 Grille: SDL, No Custom Grille, 7/8", Traditional (1W3H)

PK #
2039

Viewed From Exterior

Qty
1



- QUOMATDETM010079 - 4 7/16 Stool for a 6 9/16 Wall Pine Qty 4
- QUOMATDETM040100 - Coil (LF) Qty 23
- QUOMATDETM010074 - PF Cove/Stop Pine or Oak Qty 23
- INSTARDETR900004 - Steel Cut Out Qty 1
- INSTARDETR010004 - Wood Drywall Return Qty 23

Line # Location:

75 GREAT RM 3 OF 5



PK # 2039

Viewed From Exterior

Support Product, Direct Set Fixed Frame, White

1: Fixed Frame
 General Information: Interior Glazed, Factory Assembled, Standard, Clad, Pine, 5", 3 11/16"
 Exterior Color / Finish: Painted, Standard Enduraclad, White
 Interior Color / Finish: Primed Interior
 Glass: Insulated Dual Tempered Low-E AdvancedComfort Low-E Insulating Glass Argon Non High Altitude
 Grille: SDL, No Custom Grille, 7/8", Traditional (1W/3H)

QUOMATDETM010079 - 4 7/16 Stool for a 6 9/16 Wall Pine	Qty	4
QUOMATDETM040100 - Coil (LF)	Qty	23
QUOMATDETM010074 - PF Cove/Stop Pine or Oak	Qty	23
INSTARDETR900004 - Steel Cut Out	Qty	1
INSTARDETR010004 - Wood Drywall Return	Qty	23

Qty
1

Line # Location:

80 GREAT RM 4 OF 5



PK # 2039

Viewed From Exterior

Support Product, Direct Set Fixed Frame, White

1: Fixed Frame
 General Information: Interior Glazed, Factory Assembled, Standard, Clad, Pine, 5", 3 11/16"
 Exterior Color / Finish: Painted, Standard Enduraclad, White
 Interior Color / Finish: Primed Interior
 Glass: Insulated Dual Tempered Low-E AdvancedComfort Low-E Insulating Glass Argon Non High Altitude
 Grille: SDL, No Custom Grille, 7/8", Traditional (1W/3H)

QUOMATDETM010079 - 4 7/16 Stool for a 6 9/16 Wall Pine	Qty	4
QUOMATDETM040100 - Coil (LF)	Qty	23
QUOMATDETM010074 - PF Cove/Stop Pine or Oak	Qty	23
INSTARDETR900004 - Steel Cut Out	Qty	1
INSTARDETR010004 - Wood Drywall Return	Qty	23

Qty
1

Line # Location: Attributes

85 GREAT RM 5 OF 5



Support Product, Direct Set Fixed Frame, White

1: Fixed Frame

General Information: Interior Glazed, Factory Assembled, Standard, Clad, Pine, 5", 3 11/16"
Exterior Color / Finish: Painted, Standard Enduraclad, White
Interior Color / Finish: Primed Interior
Glass: Insulated Dual Tempered Low-E AdvancedComfort Low-E Insulating Glass Argon Non High Altitude
Grille: SDL, No Custom Grille, 7/8", Traditional (1W3H)

PK #
2039

Viewed From Exterior

Qty
1

QUOMATDETM010079 - 4 7/16 Stool for a 6 9/16 Wall Pine	Qty	4
QUOMATDETM040100 - Coil (LF)	Qty	23
QUOMATDETM010074 - PF Cove/Stop Pine or Oak	Qty	23
INSTARDETR9000004 - Steel Cut Out	Qty	1
INSTARDETR010004 - Wood Drywall Return	Qty	23

Line # Location: Attributes

90 MSTR FRONT



Architect, 2-Wide Large Awning, White

1: SizeNon-Standard Size Vent Awning

General Information: Standard, Clad, Pine, 5", 3 11/16"
Exterior Color / Finish: Painted, Standard Enduraclad, White
Interior Color / Finish: Primed Interior
Sash / Panel: Ogee, Ogee, Standard
Glass: Insulated Dual Low-E AdvancedComfort Low-E Insulating Glass Argon Non High Altitude
Hardware Options: Fold-Away Crank, Satin Nickel, No Limited Opening Hardware, No Integrated Sensor, Sill Screen: Full Screen, White, InView™
Grille: ILT, No Custom Grille, 7/8", Traditional (3W1H), Ogee, Ogee
Vertical Mull 1: FactoryMull, Standard Joining Mullion, Frame To Frame Width- 0", Mull Design Pressure- 20

PK #
2039

Viewed From Exterior

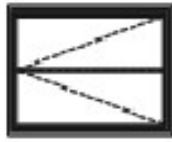
Qty
1



2: SizeNon-Standard Size Vent Awning
General Information: Standard, Clad, Pine, 5", 3 11/16"
Exterior Color / Finish: Painted, Standard Enduraclad, White
Interior Color / Finish: Primed Interior
Sash / Panel: Ogee, Ogee, Standard
Glass: Insulated Dual Low-E AdvancedComfort Low-E Insulating Glass Argon Non High Altitude
Hardware Options: Fold-Away Crank, Satin Nickel, No Limited Opening Hardware, No Integrated Sensor, Sill Screen: Full Screen, White, InView™
Grille: ILT, No Custom Grille, 7/8", Traditional (3W1H), Ogee, Ogee

QUOMATDETM010079 - 4 7/16 Stool for a 6 9/16 Wall Pine	Qty	9
QUOMATDETM040100 - Coil (LF)	Qty	27
QUOMATDETM010074 - PF Cove/Stop Pine or Oak	Qty	27
INSTARDETR900004 - Steel Cut Out	Qty	1
INSTARDETR010004 - Wood Drywall Return	Qty	27

Line # 95 Location: MSTR SIDE



PK # 2039

Viewed From Exterior

Architect, Large Awning Vent, White

1: SizeNon-Standard Size Vent Awning
 General Information: Standard, Clad, Pine, 5", 3 11/16"
 Exterior Color / Finish: Painted, Standard Enduraclad, White
 Interior Color / Finish: Primed Interior
 Sash / Panel: Ogee, Ogee, Standard
 Glass: Insulated Dual Low-E AdvancedComfort Low-E Insulating Glass Argon Non High Altitude
 Hardware Options: Fold-Away Crank, Satin Nickel, No Limited Opening Hardware, No Integrated Sensor, Sill
 Screen: Full Screen, White, InView™
 Grille: ILT, No Custom Grille, 7/8", Traditional (2W1H), Ogee, Ogee

Customer Notes: NO EGRESS NOW

QUOMATDETM010079 - 4 7/16 Stool for a 6 9/16 Wall Pine	Qty	4
QUOMATDETM040100 - Coil (LF)	Qty	15
QUOMATDETM010074 - PF Cove/Stop Pine or Oak	Qty	15
INSTARDETR900004 - Steel Cut Out	Qty	1
INSTARDETR010004 - Wood Drywall Return	Qty	15

Line # 100 Location: BLUE BATH



PK # 2039

Viewed From Exterior

Architect, Large Awning Vent, White

1: SizeNon-Standard Size Vent Awning
 General Information: Standard, Clad, Pine, 5", 3 11/16"
 Exterior Color / Finish: Painted, Standard Enduraclad, White
 Interior Color / Finish: Primed Interior
 Sash / Panel: Ogee, Ogee, Standard
 Glass: Insulated Dual Tempered Obscure Low-E Obscure Advanced Low-E Insulating Glass Argon Non High Altitude
 Hardware Options: Fold-Away Crank, Satin Nickel, No Limited Opening Hardware, No Integrated Sensor, Sill
 Screen: Full Screen, White, InView™
 Grille: ILT, No Custom Grille, 7/8", Traditional (2W1H), Ogee, Ogee

Obscure Glass Style: Pattern62(Standard)

QUOMATDETM010079 - 4 7/16 Stool for a 6 9/16 Wall Pine	Qty	4
QUOMATDETM040100 - Coil (LF)	Qty	15
QUOMATDETM010074 - PF Cove/Stop Pine or Oak	Qty	15
INSTARDETR900004 - Steel Cut Out	Qty	1
INSTARDETR010004 - Wood Drywall Return	Qty	15

Architect, 2-Wide Large Awning, White



PK #
2039

Viewed From Exterior

- 1: SizeNon-Standard Size Vent Awning
 General Information: Standard, Clad, Pine, 5", 3 11/16"
 Exterior Color / Finish: Painted, Standard Enduraclad, White
 Interior Color / Finish: Primed Interior
 Sash / Panel: Ogee, Ogee, Standard
 Glass: Insulated Dual Low-E AdvancedComfort Low-E Insulating Glass Argon Non High Altitude
 Hardware Options: Fold-Away Crank, Satin Nickel, No Limited Opening Hardware, No Integrated Sensor, Sill
 Screen: Full Screen, White, InView™
 Grille: ILT, No Custom Grille, 7/8", Traditional (3W/1H), Ogee, Ogee
 Vertical Mull 1: FactoryMull, Standard Joining Mullion, Frame To Frame Width- 0", Mull Design Pressure- 20
- 2: SizeNon-Standard Size Vent Awning
 General Information: Standard, Clad, Pine, 5", 3 11/16"
 Exterior Color / Finish: Painted, Standard Enduraclad, White
 Interior Color / Finish: Primed Interior
 Sash / Panel: Ogee, Ogee, Standard
 Glass: Insulated Dual Low-E AdvancedComfort Low-E Insulating Glass Argon Non High Altitude
 Hardware Options: Fold-Away Crank, Satin Nickel, No Limited Opening Hardware, No Integrated Sensor, Sill
 Screen: Full Screen, White, InView™
 Grille: ILT, No Custom Grille, 7/8", Traditional (3W/1H), Ogee, Ogee



Attributes

Line # 105 Location: BACK BED

Qty
1

Customer Notes: NO EGRESS NOW

QUOMATDETM010079 - 4 7/16 Stool for a 6 9/16 Wall Pine	Qty	9
QUOMATDETM040100 - Coil (LF)	Qty	27
QUOMATDETM010074 - PF Cove/Stop Pine or Oak	Qty	27
INSTARDETR900004 - Steel Cut Out	Qty	1
INSTARDETR010004 - Wood Drywall Return	Qty	27

Line #	Location:	Attributes	Qty
110	GREAT RM		1
<p>Architect, Large Awning Vent, White</p> <p>1: SizeNon-Standard Size Vent Awning General Information: Standard, Clad, Pine, 5", 3 11/16" Exterior Color / Finish: Painted, Standard Enduraclad, White Interior Color / Finish: Primed Interior Sash / Panel: Ogee, Ogee, Standard Glass: Insulated Dual Low-E AdvancedComfort Low-E Insulating Glass Argon Non High Altitude Hardware Options: Fold-Away Crank, Satin Nickel, No Limited Opening Hardware, No Integrated Sensor, Sill Screen: Full Screen, White, InView™ Grille: ILT, No Custom Grille, 7/8", Traditional (3W1H), Ogee, Ogee</p>			
	 <p>PK # 2039</p> <p>Viewed From Exterior</p>		
		<p>QUOMATDETM010079 - 4 7/16 Stool for a 6 9/16 Wall Pine Qty 5</p> <p>QUOMATDETM040100 - Coil (LF) Qty 16</p> <p>QUOMATDETM010074 - PF Cove/Stop Pine or Oak Qty 16</p> <p>INSTARDETR900004 - Steel Cut Out Qty 1</p> <p>INSTARDETR010004 - Wood Drywall Return Qty 16</p>	
Line #	Location:	Attributes	Qty
115	LLBED		1
<p>Architect, Casement Right, White</p> <p>1: SizeNon-Standard Size Right Casement General Information: Standard, Clad, Pine, 5", 3 11/16" Exterior Color / Finish: Painted, Standard Enduraclad, White Interior Color / Finish: Primed Interior Sash / Panel: Ogee, Ogee, Standard Glass: Insulated Dual Low-E AdvancedComfort Low-E Insulating Glass Argon Non High Altitude Hardware Options: Side Pivot Hardware, Fold-Away Crank, Satin Nickel, No Window Opening Control Device, No Limited Opening Hardware, No Integrated Sensor Screen: Full Screen, White, InView™ Grille: ILT, No Custom Grille, 7/8", Traditional (2W1H), Ogee, Ogee</p>			
	 <p>PK # 2039</p> <p>Viewed From Exterior</p>		
		<p>QUOMATDETM010079 - 4 7/16 Stool for a 6 9/16 Wall Pine Qty 4</p> <p>QUOMATDETM040100 - Coil (LF) Qty 13</p> <p>QUOMATDETM010074 - PF Cove/Stop Pine or Oak Qty 13</p> <p>INSTARDETR900004 - Steel Cut Out Qty 1</p> <p>INSTARDETR010004 - Wood Drywall Return Qty 13</p>	

Line # Location:

120 LL BED

Attributes



PK #
2039

Architect, 3-Wide Casement, White

1: SizeNon-Standard Size Left Casement

General Information: Standard, Clad, Pine, 5", 3 11/16"

Exterior Color / Finish: Painted, Standard Enduraclad, White

Interior Color / Finish: Primed Interior

Sash / Panel: Ogee, Ogee, Standard

Glass: Insulated Dual Low-E AdvancedComfort Low-E Insulating Glass Argon Non High Altitude

Hardware Options: Wash Hinge Hardware, Fold-Away Crank, Satin Nickel, No Window Opening Control Device, No Limited Opening Hardware, No Integrated Sensor

Screen: Full Screen, White, InView™

Grille: No Grille,

Vertical Mull 1: FactoryMull, Standard Joining Mullion, Frame To Frame Width- 0", Mull Design Pressure- 20

2: SizeNon-Standard Size Fixed Sash Set

General Information: Standard, Clad, Pine, 5", 3 11/16"

Exterior Color / Finish: Painted, Standard Enduraclad, White

Interior Color / Finish: Primed Interior

Sash / Panel: Ogee, Ogee, Standard

Glass: Insulated Dual Low-E AdvancedComfort Low-E Insulating Glass Argon Non High Altitude

Grille: No Grille,

Vertical Mull 2: FactoryMull, Standard Joining Mullion, Frame To Frame Width- 0", Mull Design Pressure- 20

3: Size Right Casement

General Information: Standard, Clad, Pine, 5", 3 11/16"

Exterior Color / Finish: Painted, Standard Enduraclad, White

Interior Color / Finish: Primed Interior

Sash / Panel: Ogee, Ogee, Standard

Glass: Insulated Dual Low-E AdvancedComfort Low-E Insulating Glass Argon Non High Altitude

Hardware Options: Wash Hinge Hardware, Fold-Away Crank, Satin Nickel, No Window Opening Control Device, No Limited Opening Hardware, No Integrated Sensor

Screen: Full Screen, White, InView™

Grille: No Grille,

Viewed From Exterior

QUOMATDETM010079 - 4 7/16 Stool for a 6 9/16 Wall Pine	Qty	7
QUOMATDETM040100 - Coil (LF)	Qty	18
QUOMATDETM010074 - PF Cove/Stop Pine or Oak	Qty	18
INSTARDETR900004 - Steel Cut Out	Qty	1
INSTARDETR010004 - Wood Drywall Return	Qty	18

Line # Location: Attributes

125 PEACH BATH



Qty
1

Architect, Large Awning Vent, White

1: SizeNon-Standard Size Vent Awning
General Information: Standard, Clad, Pine, 5", 3 11/16"
Exterior Color / Finish: Painted, Standard Enduraclad, White
Interior Color / Finish: Primed Interior
Sash / Panel: Ogee, Ogee, Standard
Glass: Insulated Dual Tempered Obscure Low-E Obscure Advanced Low-E Insulating Glass Argon Non High Altitude
Hardware Options: Fold-Away Crank, Satin Nickel, No Limited Opening Hardware, No Integrated Sensor, Sill
Screen: Full Screen, White, InView™
Grille: ILT, No Custom Grille, 7/8", Traditional (2W1H), Ogee, Ogee

PK #
2039

Viewed From Exterior

Obscure Glass Style: Pattern62(Standard)

- QUOMATDETM010079 - 4 7/16 Stool for a 6 9/16 Wall Pine Qty 4
- QUOMATDETM040100 - Coil (LF) Qty 13
- QUOMATDETM010074 - PF Cove/Stop Pine or Oak Qty 13
- INSTARDETR900004 - Steel Cut Out Qty 1
- INSTARDETR010004 - Wood Drywall Return Qty 13

Line # Location: Attributes

130 LL 1 OF 2



Qty
1

Architect, Large Awning Vent, White



1: SizeNon-Standard Size Vent Awning
General Information: Standard, Clad, Pine, 5", 3 11/16"
Exterior Color / Finish: Painted, Standard Enduraclad, White
Interior Color / Finish: Primed Interior
Sash / Panel: Ogee, Ogee, Standard
Glass: Insulated Dual Low-E Advanced Comfort Low-E Insulating Glass Argon Non High Altitude
Hardware Options: Fold-Away Crank, Satin Nickel, No Limited Opening Hardware, No Integrated Sensor, Sill
Screen: Full Screen, White, InView™
Grille: ILT, No Custom Grille, 7/8", Traditional (4W1H), Ogee, Ogee

PK #
2039

Viewed From Exterior

Customer Notes: NO EGRESS NOW

- QUOMATDETM010079 - 4 7/16 Stool for a 6 9/16 Wall Pine Qty 7
- QUOMATDETM040100 - Coil (LF) Qty 19
- QUOMATDETM010074 - PF Cove/Stop Pine or Oak Qty 19
- INSTARDETR900004 - Steel Cut Out Qty 1
- INSTARDETR010004 - Wood Drywall Return Qty 19

Line #	Location:	Attributes	Qty
135	LL 2 OF 2		1
			
	PK # 2039		
	Viewed From Exterior		
	1: SizeNon-Standard Size Vent Awning		
	General Information: Standard, Clad, Pine, 5", 3 11/16"		
	Exterior Color / Finish: Painted, Standard Enduraclad, White		
	Interior Color / Finish: Primed Interior		
	Sash / Panel: Ogee, Ogee, Standard		
	Glass: Insulated Dual Low-E AdvancedComfort Low-E Insulating Glass Argon Non High Altitude		
	Hardware Options: Fold-Away Crank, Satin Nickel, No Limited Opening Hardware, No Integrated Sensor, Sill		
	Screen: Full Screen, White, InView™		
	Grille: ILT, No Custom Grille, 7/8", Traditional (4W1H), Ogee, Ogee		
	QUOMATDETM010079 - 4 7/16 Stool for a 6 9/16 Wall Pine	Qty	7
	QUOMATDETM040100 - Coil (LF)	Qty	19
	QUOMATDETM010074 - PF Cove/Stop Pine or Oak	Qty	19
	INSTARDETR900004 - Steel Cut Out	Qty	1
	INSTARDETR010004 - Wood Drywall Return	Qty	19
	Customer Notes: NO EGRESS NOW		
Line #	Location:	Attributes	Qty
140	LAUNDRY		1
			
	PK # 2039		
	Viewed From Exterior		
	1: SizeNon-Standard Size Vent Awning		
	General Information: Standard, Clad, Pine, 5", 3 11/16"		
	Exterior Color / Finish: Painted, Standard Enduraclad, White		
	Interior Color / Finish: Primed Interior		
	Sash / Panel: Ogee, Ogee, Standard		
	Glass: Insulated Dual Low-E AdvancedComfort Low-E Insulating Glass Argon Non High Altitude		
	Hardware Options: Fold-Away Crank, Satin Nickel, No Limited Opening Hardware, No Integrated Sensor, Sill		
	Screen: Full Screen, White, InView™		
	Grille: ILT, No Custom Grille, 7/8", Traditional (2W1H), Ogee, Ogee		
	QUOMATDETM010079 - 4 7/16 Stool for a 6 9/16 Wall Pine	Qty	4
	QUOMATDETM040100 - Coil (LF)	Qty	13
	QUOMATDETM010074 - PF Cove/Stop Pine or Oak	Qty	13
	INSTARDETR900004 - Steel Cut Out	Qty	1
	INSTARDETR010004 - Wood Drywall Return	Qty	13
	For more information regarding the finishing, maintenance, service and warranty of all Pella® products, visit the Pella® website at www.pella.com		

Wallside Windows

SINCE 1944

27000 W. Trolley Industrial Dr.
Taylor, MI 48180
Phone: 313-292-4400
Toll Free: 800-521-7800
Fax: 313-292-4504
www.wallside.com

Date: 4 5 21
Customer# _____
Job # _____
Profession 15
Siding # _____
Appt # _____
Proofed By: _____
Date 1

A Customer Information PC

Name(s): KERRY PASKILL
Address: 19355 PARKSIDE
City: 035 MI 48221
Phone #1: _____ Phone #3: _____
Phone #2: _____ Phone #4: _____
Email: _____

CONTRACT

B Job Location

Name: _____
Address: _____
City: _____ St: _____ Zip: _____
Jobsite #: _____
Time Available For Measure: _____



C Financial

The Customer As follows:
Upon Signing

COD on measur

COD on window

COD on siding

D Job Summary

Total Windows/DW Removed: _____ Window Color: In WHITE Out WHITE Initial: _____
Total Windows/DW Installed: _____ Trim Color: WHITE # 280 Initial: _____
Doorwall Handle Color: _____ Glass: PREMIUM Initial: _____

E Riders

- Siding Alter
- Muntin/Specialty
- Disclaimer

F Measure Info

Measure Man: _____
Measured By: _____ Date: 1 Name: _____

G Condo Info

Bank financing

Bank Name: _____

H Work Order

Stop Size	Sill Size	5 - Year Glass Breakage Warranty	Slider					Casement		Miscellaneous			Glass		House Type						
			D.H. Tilt (C/O)	Picture Window	Double	End Vent	Center Vent	Single (Hinge L/R)	Double	Awning	Picture Window	Specialty/Garden/Bay/Bow	Doorwall (R-L L-R) (from outside)	Screen (Full / 1/2)	Obscure (Both/L)	Muntin Color Contour or Flat	Muntin Count	Temp. (Both/L)	Brick	Frame (Sided)	Block
Finished Size	Location																				
1	STAIR								X								X	X			
2	STAIR								X								X				
3	DIN R (NORTH)	MULLED																			
4	R	1/4 1/2 1/4							X												
5	R	WOOD																			
6	S (WEST)	MULLED																			
7	S	1/4 1/4 1/4							X												
8	S	WOOD																			
9																					
10																					

Please group windows by level.

I Sales Comments

J Measure/Installer Comments

Construction review required Yes No
If yes, photo required.

K Office Use Only



CONTRACT TERMS AND CONDITIONS: 1. Purchaser's Right to Cancel. Under Michigan Public Acts of 1976, you are entitled to a written copy of this contract and a copy of the Michigan Public Acts of 1976 regarding this contract. If you do not receive a copy of this contract and a copy of the Michigan Public Acts of 1976 within 3 business days after the date of this transaction, you may cancel this contract. Additionally, the seller is prohibited from having an independent courier service or other third party deliver this contract to you. You may cancel this contract within a 3-business-day period in which you can cancel the transaction.

All jobs MUST be measured 14 days prior to the promised installation date, otherwise the installation date will be the date of measurement. Customer is responsible for removing and reinstalling alarms and window treatments prior to installation and clean up work area and haul away debris.

By: _____ Purchaser(s): (Print)

Print Name: PAN SCAMA Purchaser(s): (Sign)

Accepted By: _____ Installation Date: _____

521

CONTRACT

A Customer Information PC

Name(s): **KERRY PASKILL**
 Address: **19355 PARKSIDE**
 City: **D35 MI 48221**
 Phone #1: _____ Phone #3: _____
 Phone #2: _____ Phone #4: _____
 Email: _____

B Job Location

Name: _____
 Address: _____
 City: _____ St: _____ Zip: _____
 Jobsite #: _____
 Time Available For Measure: _____



C Financial Terms CC

The Customer agrees to pay the total sum of: _____
As follows:
 Upon Signing CK, CC, Cash
 COD on measure CK, CC, Cash
 COD on windows _____
 COD on siding _____
 Bank financing/other _____
 Bank Name: _____ Finance Term: _____

Window Color: In **WHITE** Out **WHITE** Initial: _____
 Trim Color: **WHITE** # **280** Initial: _____
 Glass: **PREMIUM** Initial: _____

E Riders

- Siding
- Alter
- Muntin/Specialty
- Disclaimer

F Measure Info

Measure Man: _____
 Measured By: _____ Date: ____/____/____

G Condo Info

Name: _____

Location	Slider		Casement		Miscellaneous			Glass		House Type		Sills		Instructions			Type of Removal												
	D.H. Tilt (C/O)	Picture Window	Double	End Vent	Center Vent	Single (Hinge L/R)	Double	Awning	Picture Window	Specialty/Garden/Bay/Bow	Downwell (R-L-R) (from outside)	Screen (Full / 1/2)	Obscure (Both/L)	Muntin Color Contour or Flat	Muntin Count	Temp. (Both/L)		Brick	Frame (Sided)	Block	Sill (Buff/Pine/White)	WOOD Lock	Extension Jamb	Wood Buck	Casing	Pan Removal	Outside Install	Alter Opening	
STAIR								X							X	X												5	1
STAIR								X							X														2
DIN R (NORTH)	MULLED					R																							3
R	1/4 1/2 1/4					L			X																				4
R	WOOD					L																							5
S (WEST)	MULLED					R																							6
S	1/4 1/2 1/4					L			X																				7
S	WOOD					L																							8
																													9
																													10

J Measure/Installer Comments

K Office Use Only



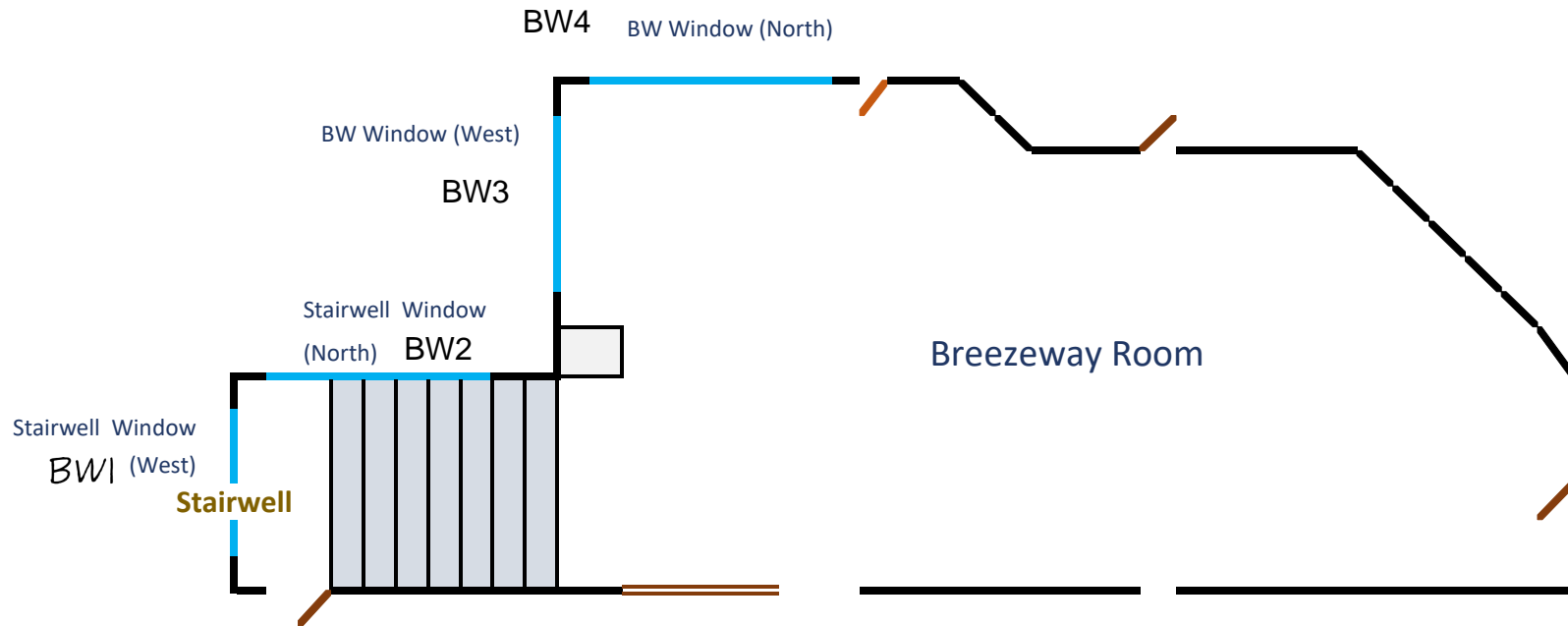
CONTRACT TERMS AND CONDITIONS: 1. Purchaser's Right to Cancel. Under Michigan Public Acts of 1971, No. 227, if this agreement was solicited in a personal or telephonic solicitation at your residence, and if you sign this agreement at your residence, then you, the purchaser, may cancel this transaction at any time prior to midnight on the third business day after the date of this transaction. See the notice of cancellation form on the back of your copy of this agreement for an explanation of this right. Additionally, the seller is prohibited from having an independent courier service or other third party pick up your payment at your residence before the end of the 3-business-day period in which you can cancel the transaction. **MORE TERMS AND CONDITIONS ON BACK** ►

All jobs MUST be measured 14 days prior to the promised installation date, otherwise the installation date will be rescheduled. Further, changes must be received 14 days prior to the installation date. Customer is responsible for removing and reinstalling alarms and window treatments. New interior trim is not painted or stained. Wallside will clean up work area and haul away debris.

By: _____ Purchaser(s) [Print]
 Print Name: **PAN SCAMM** Purchaser(s) [Sign]
 Accepted By: _____
 Installation Date: _____
 PAGE 1 of 1
 REV. 10/19

Construction review required Yes No
 If yes, photo required.

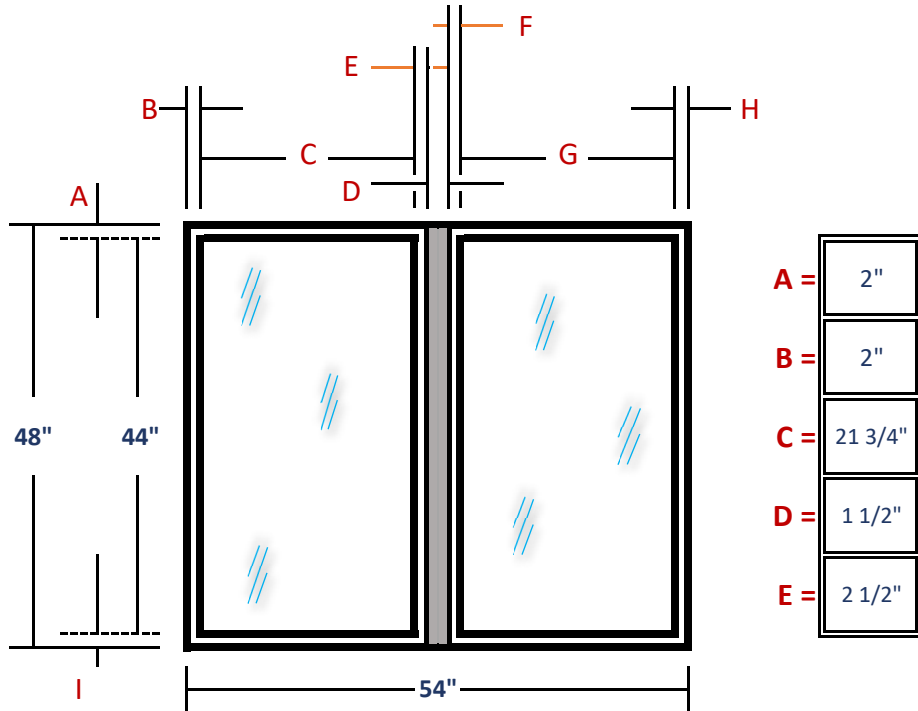
Breezeway Room Layout



Stairwell Window [West]

ORIGINAL!

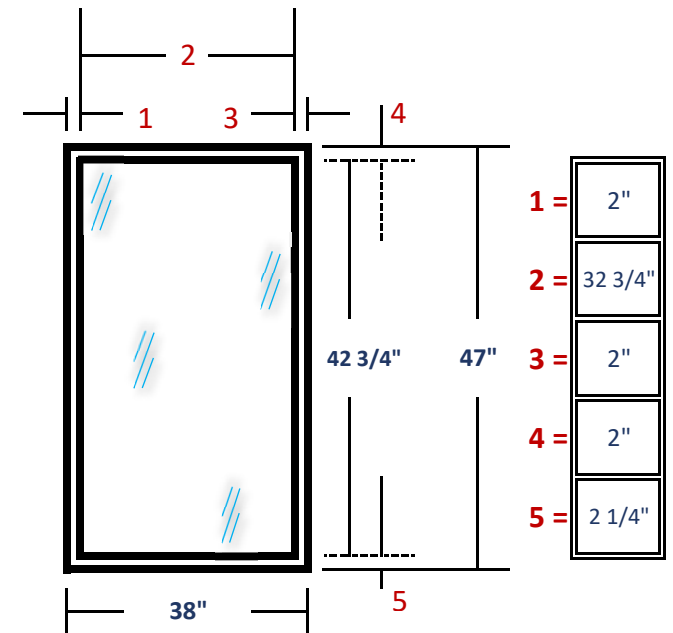
(Leading to Laundry Rm.)



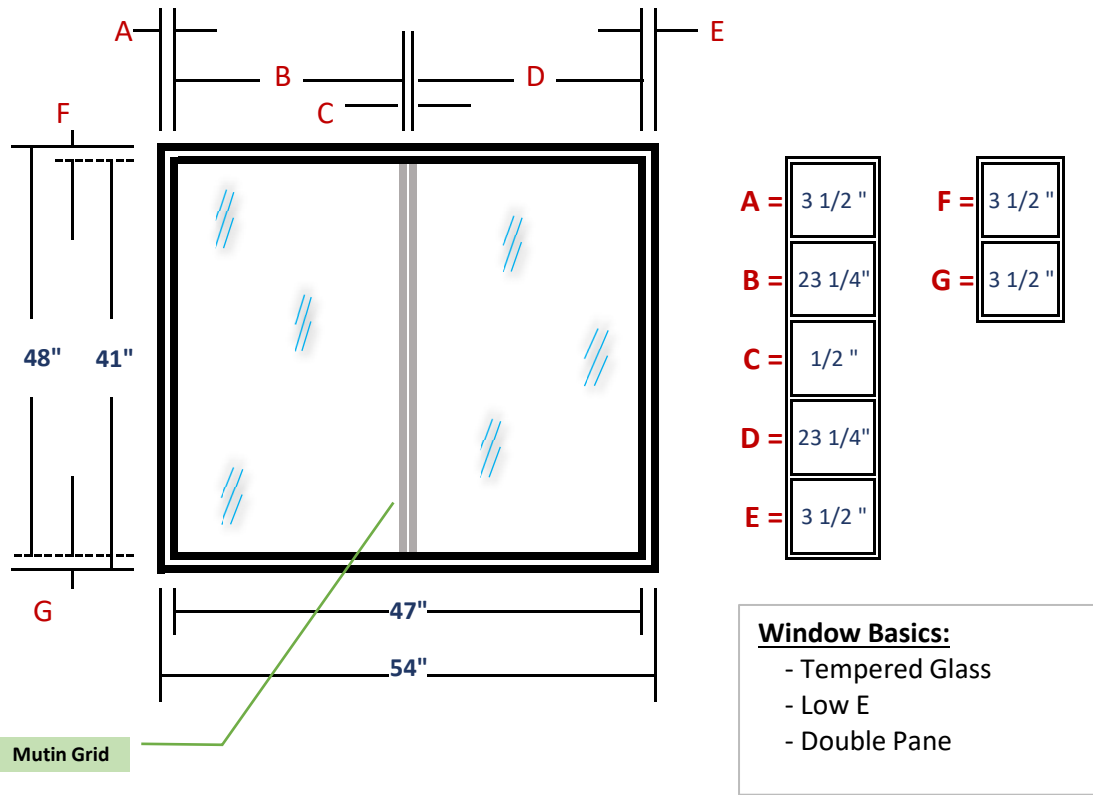
Stairwell Window [North]

ORIGINAL!

(Leading to Laundry Rm.)



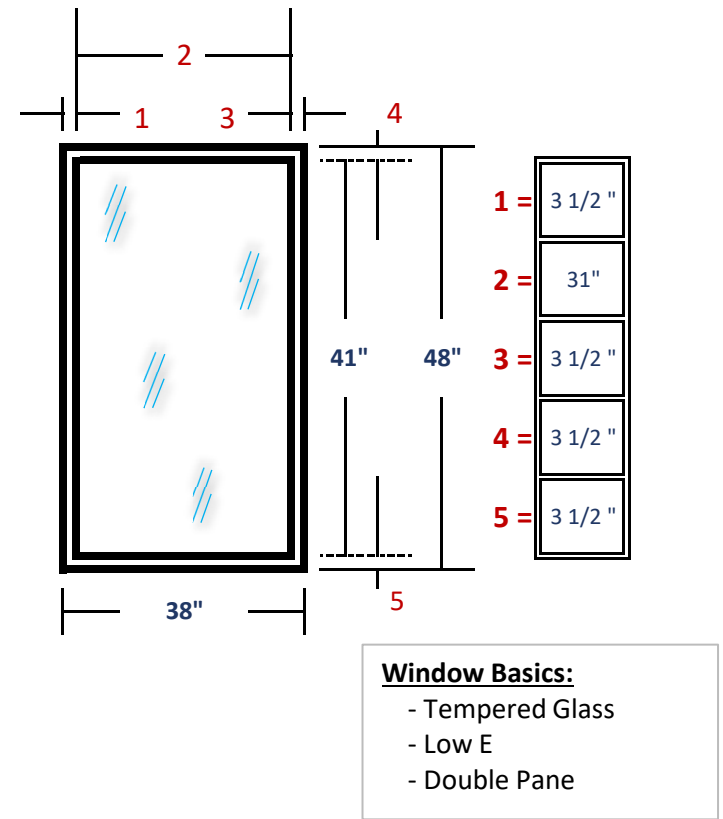
Stairwell Window [North] **Wallside Proposal**
 (Leading to Laundry Rm.)



Window Basics:

- Tempered Glass
- Low E
- Double Pane

Stairwell Window [West] **Wallside Proposal**
 (Leading to Laundry Rm.)



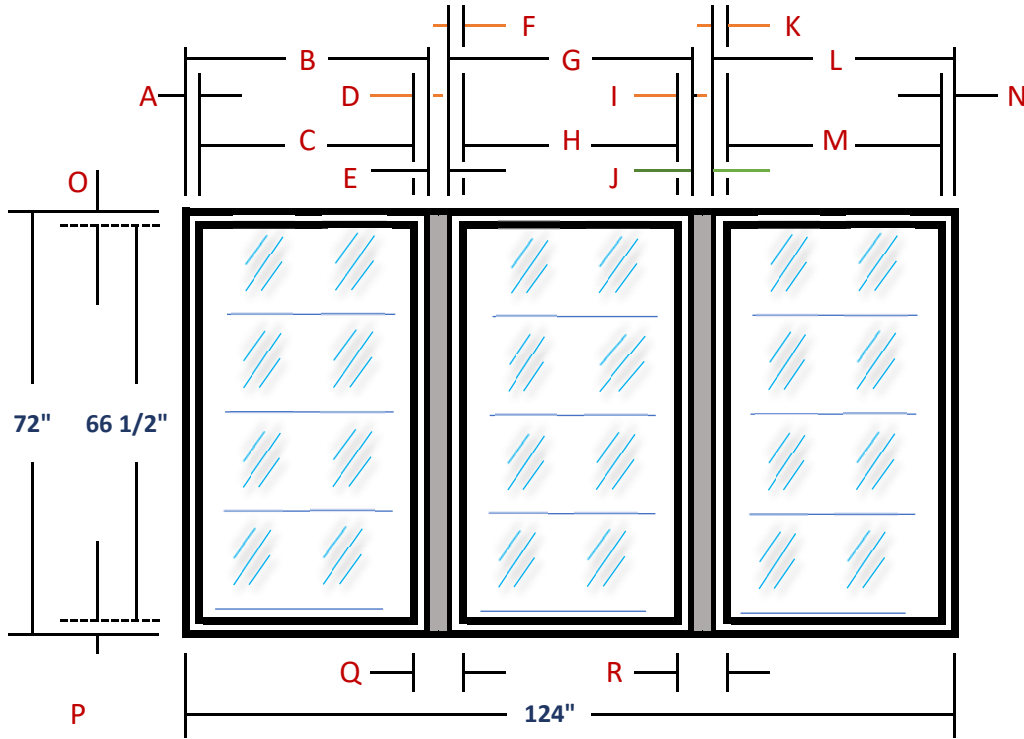
Window Basics:

- Tempered Glass
- Low E
- Double Pane

Breezeway Rm. Window [West]

ORIGINAL!

(Breezeway Room)



A =	2"
B =	40 1/2"
C =	36 1/2"
D =	2 1/2"
E =	1 1/2"

F =	2 1/2"
G =	40 1/2"
H =	36 1/2"
I =	2 1/2"
J =	1 1/2"

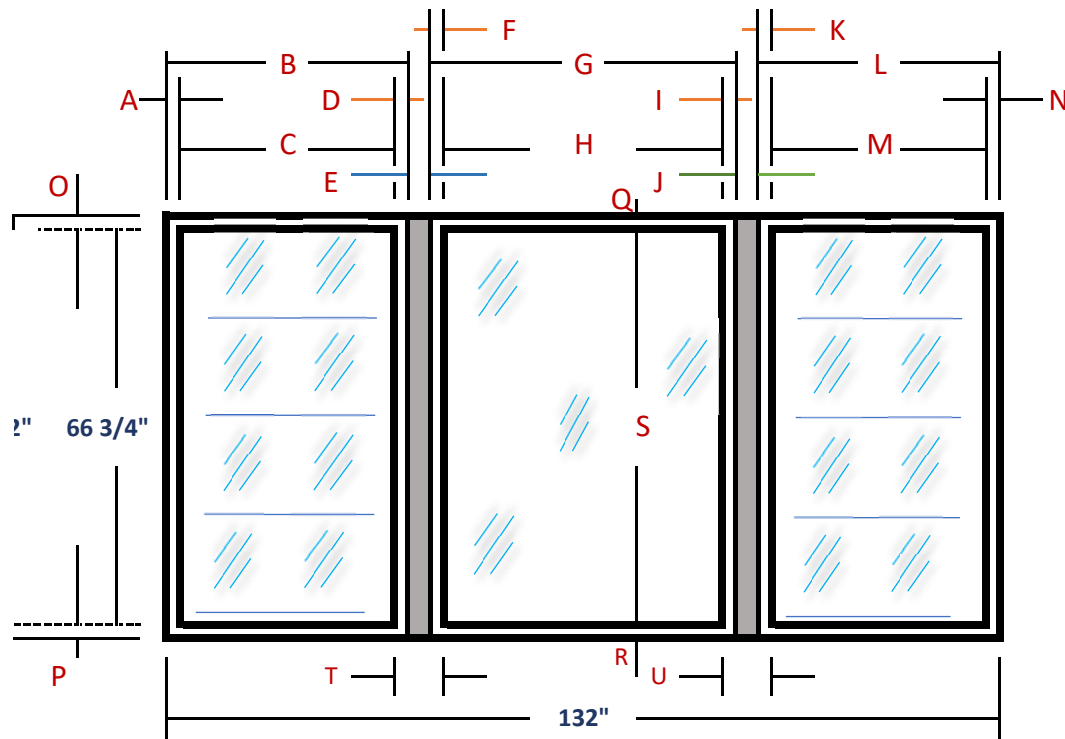
K =	2 1/2"
L =	40 1/2"
M =	36 1/2"
N =	2"
O =	1 7/8"

P =	2"
Q =	6 1/2"
R =	6 1/2"

Breezeway Rm. Window [North]

ORIGINAL!

(Breezeway Room)

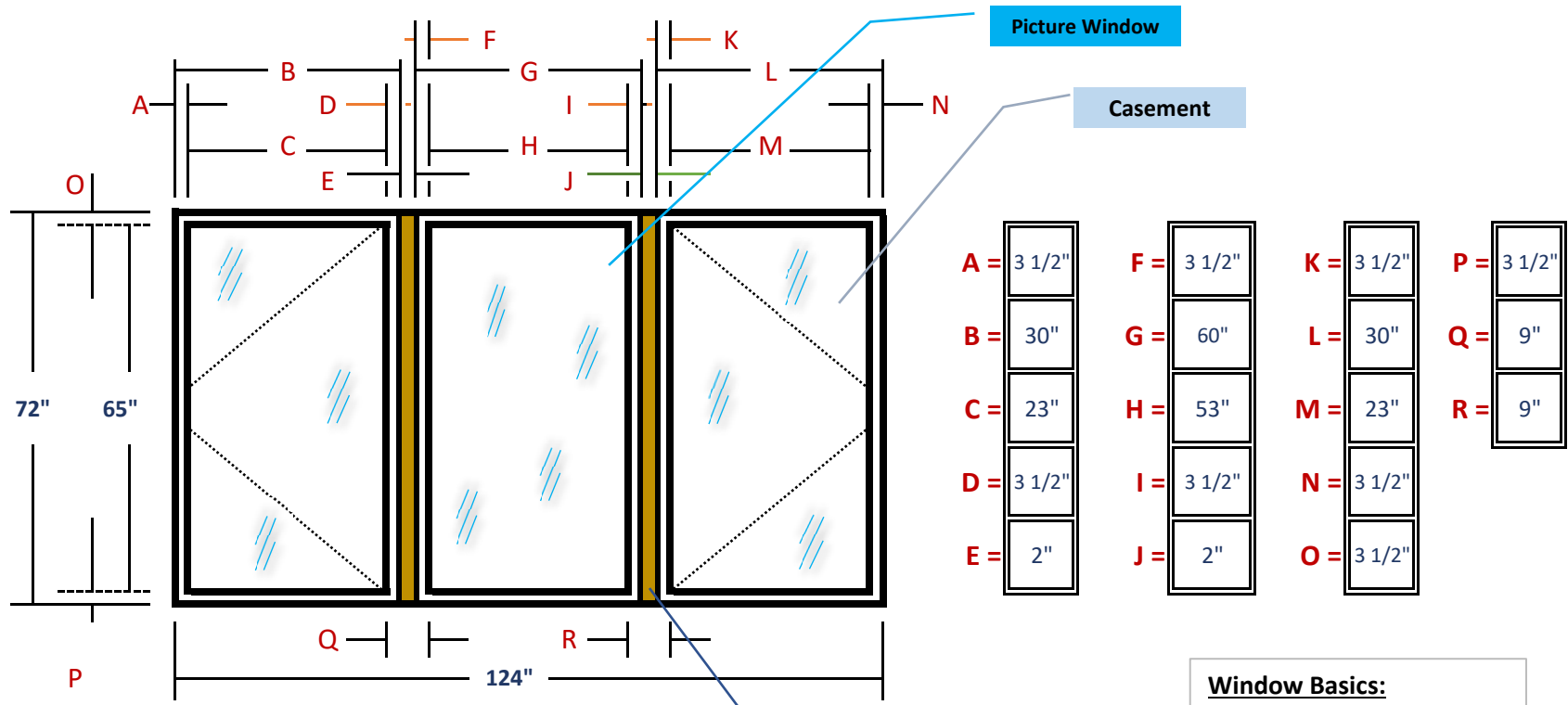


A =	1 1/2"	G =	59 3/4"	M =	36 1/2"	S =	68 3/4"
B =	40 1/2"	H =	57 1/2"	N =	2"	T =	6 1/2"
C =	37 1/2"	I =	2"	O =	1 7/8"	U =	6 1/2"
D =	2 1/2"	J =	1 3/8"	P =	2"		
E =	1 1/2"	K =	2"	Q =	1/2"		
F =	2 1/2"	L =	40 1/2"	R =	1"		

Breezeway Rm. Window [West]

Wallside Proposal

(Breezeway Room)



Picture Window

Casement

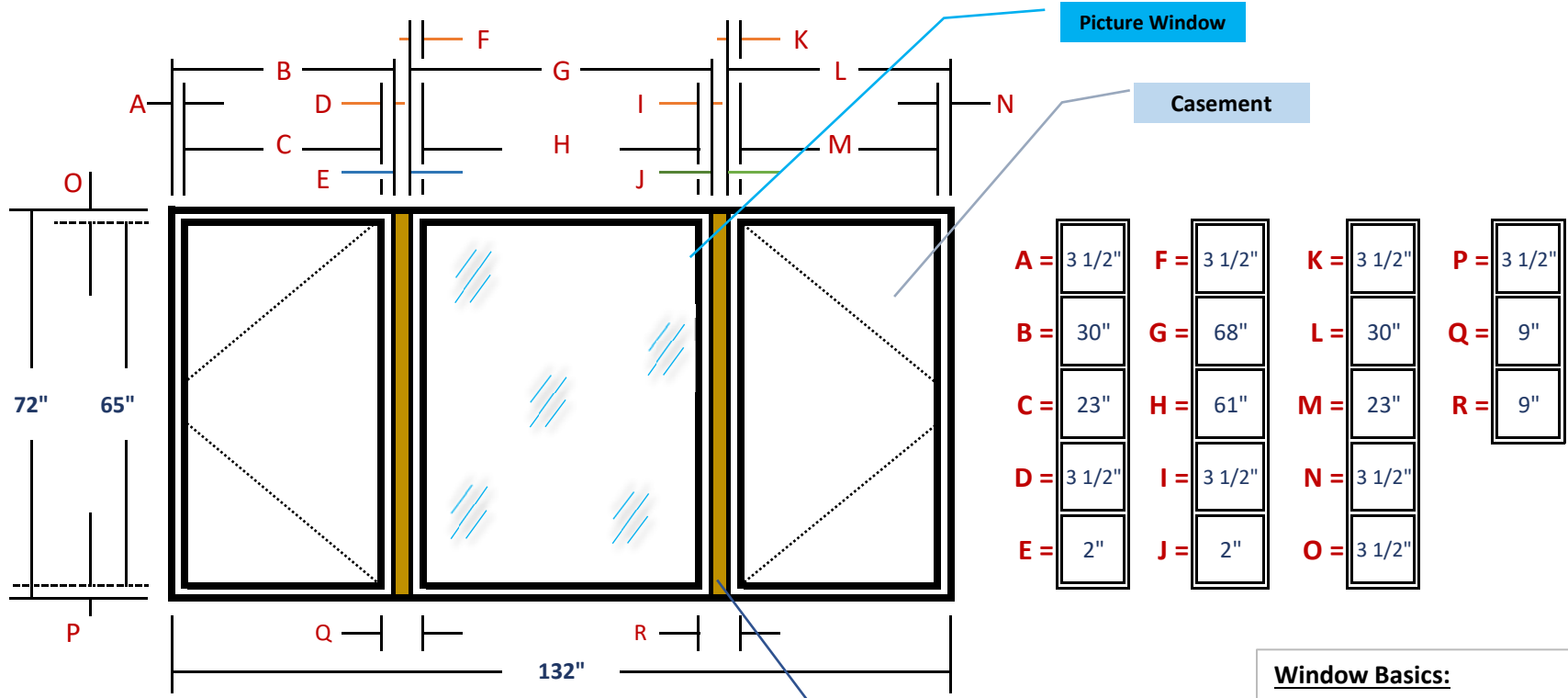
Wood Stud for Window

Window Basics:
 - Tempered Glass
 - Low E
 - Double Pane

Breezeway Rm. Window [North]

(Breezeway Room)

Wallside Proposal



Picture Window

Casement

Wood Stud for Window

- Window Basics:**
- Tempered Glass
 - Low E
 - Double Pane















115

135

130





140

125

120



#60, back of house
steel casements removal, rusting
hard to operate.









redo the alum trim in pella
white per h/o. labor added.
side of house





















