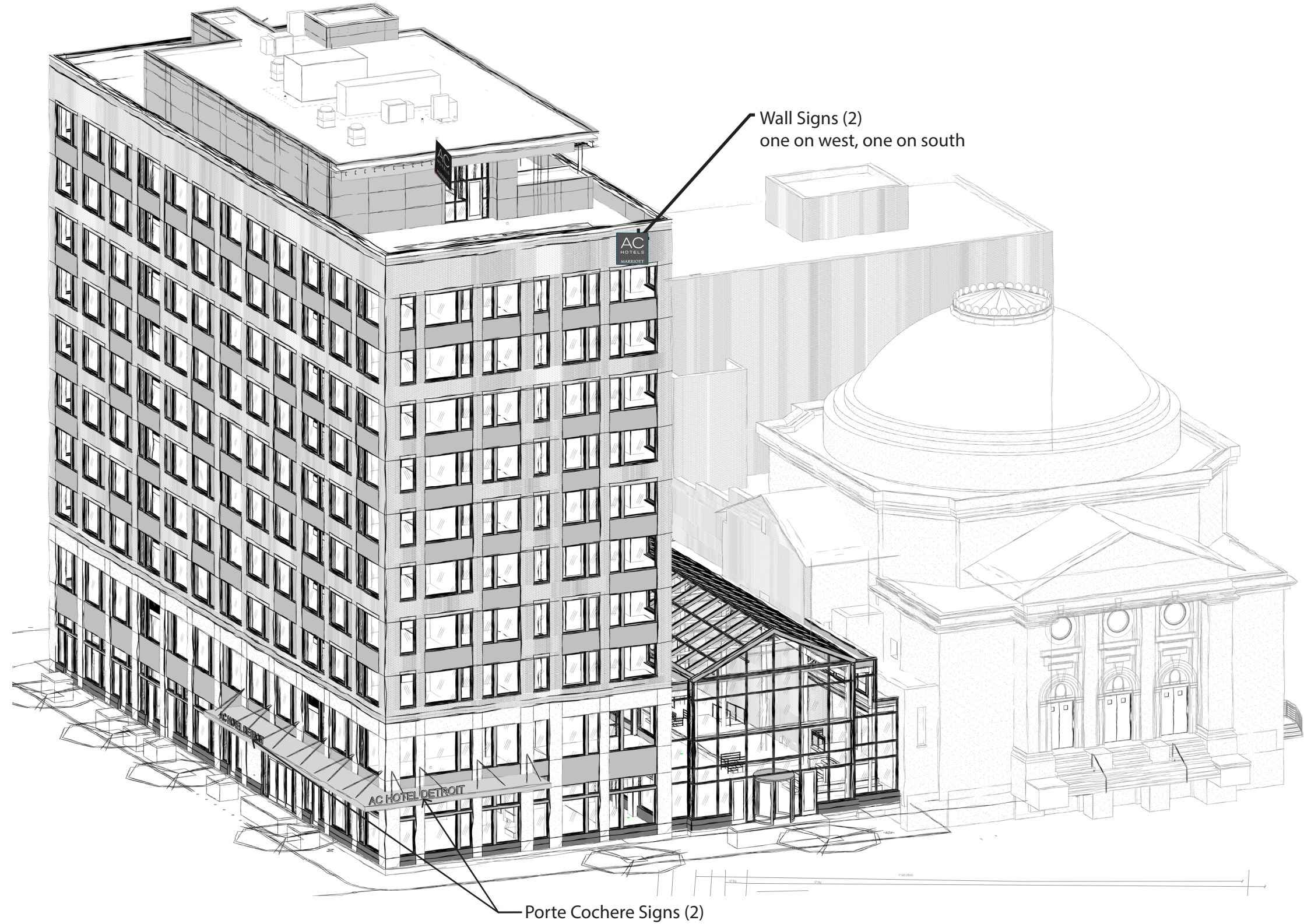


Signage



BUILDING SIGNAGE - WALL SIGN

Signcomp extruded aluminum #2107
 Bleed face frame w/ #2124 cover & internal 1½"
 Aluminum square tube frame
 Exterior painted to match pms 425c gray (satin finish)

Flexible bleed faces w/ digitally printed vinyl graphics
 Background to be pms 425c gray
 Logo copy & divider to show-thru white

Internally illuminated w/ 7100k white led's
 Remote led power supplies
 (verify access behind wall)

Clip-mount to wall w/ non-corrosive
 Hardware as req'd per site conditions

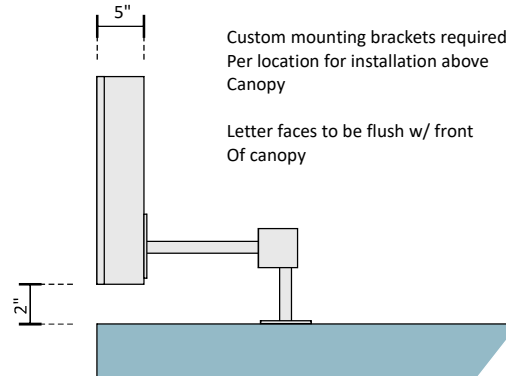


S/F WALL SIGN

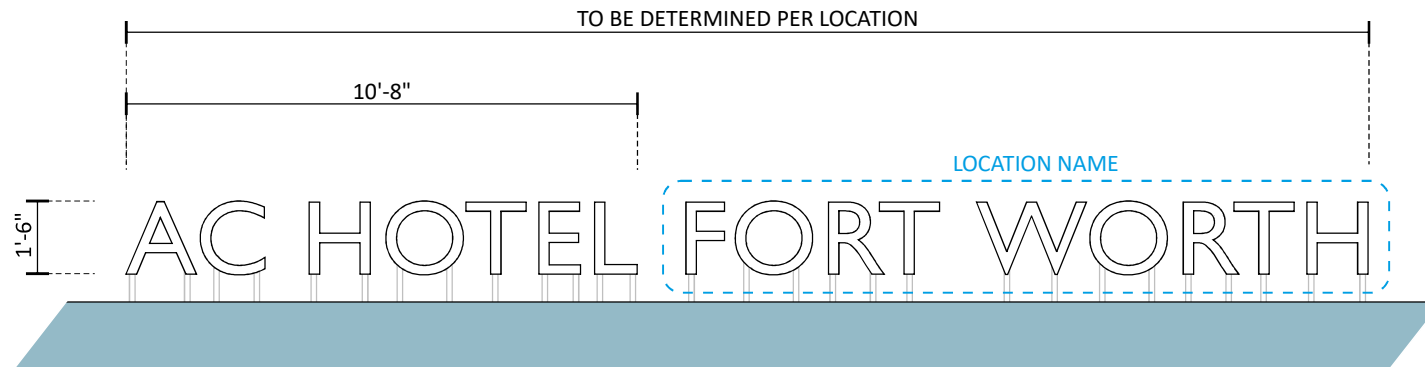
A	B	C	D	E	F	G	H	SQ FT
4'-0"	4'-0"	3'-2¾"	9"	⅝"	1'-3¾"	4"	4¼"	16 SQ FT
5'-0"	5'-0"	4'-0"	11½"	½"	1'-8"	5¼"	5½"	25 SQ FT
6'-0"	6'-0"	4'-9½"	1'-1¾"	¾"	1'-11"	6¼"	6½"	36 SQ FT

PORTE COCHERE SIGNAGE - 18"

- Aluminum channel letters
- Wrisco brite clear anodized .040 aluminum
- White I.e.p inside
- 1" silver jewelite retainers
- #7328 white acrylic faces
- White GE tetra I.e.d. illumination
- Power supplies in raceway on mounting bracket
- Flush mounted to wall surface
- With rivnut anchors as required



END VIEW



CANOPY CHANNEL LETTERS

18"

SCALE: 1/8" = 1'-0"