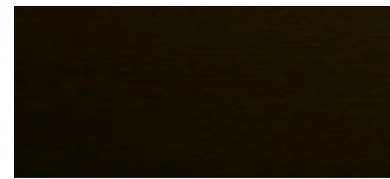


Materials



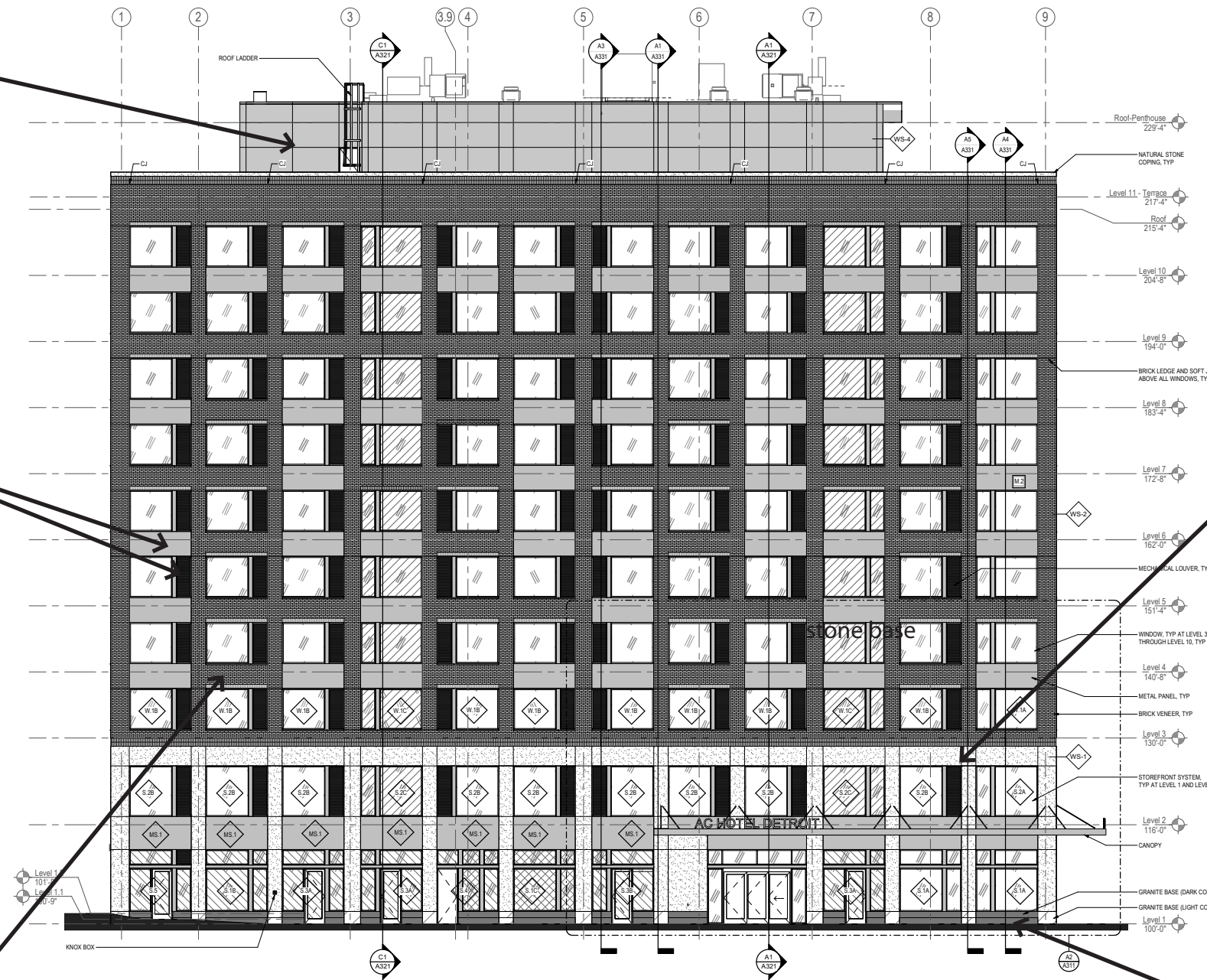
metal panel at rooftop bar
finish: clear anodized



metal panel & louvers
finish: dark bronze typical



brick



stone at levels 1 & 2



granite at base

M-950 Series Windows

Commercial Aluminum Single-Hung, Slider & Fixed
3 1/4" Frame Depth



Quality Windows & Doors for All Seasons

Single-Hung (side-load), Fixed and Horizontal Slider

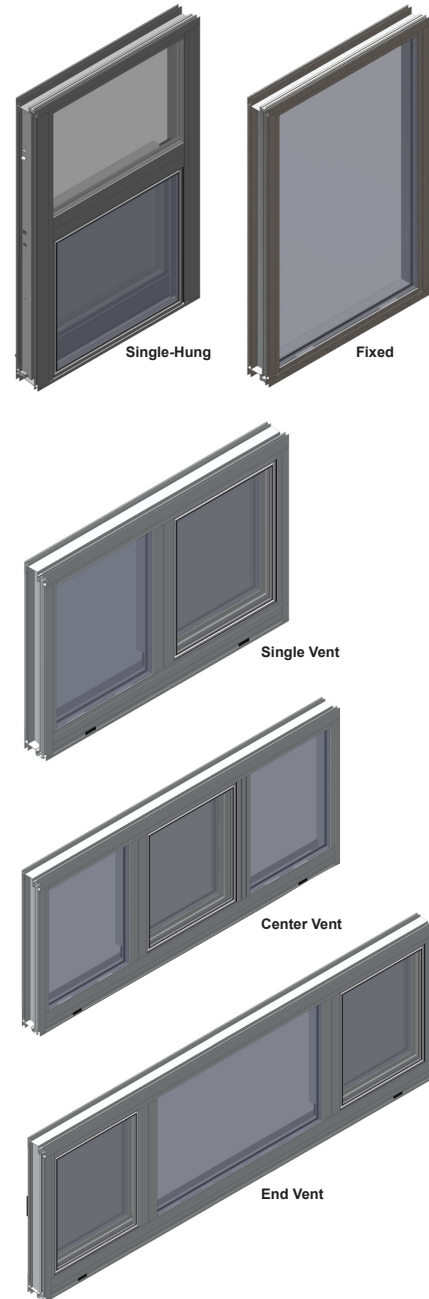
Structural Thermal Break: Pour and debridge polyurethane thermal break utilizing Azo-Brader™ Technology with a 10-year warranty against failure of the polymer

1" Sealed Insulated Glass: 10-year limited warranty. Numerous glass options available including Low-E, tinted, obscure, tempered, laminated, argon-filled and spandrel

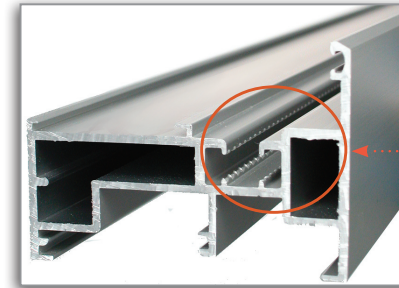
- Interior glazed design for ease of glass replacement
- 1-year limited warranty on window materials and workmanship
- Numerous available installation systems, mulling and stacking options
- Screen frame of extruded aluminum with fiberglass cloth standard - aluminum cloth optional
- Standard finishes include white or bronze (AAMA 2603); white or bronze 2-coat Kynar® (AAMA 2605); and clear or bronze anodized (AAMA 611)

Non-standard colors with minimum order

(Kynar® is a registered trademark of Arkema Inc.)
(Azo-Brader™ is a trademark of Azon USA Inc.)



Azo-Brader™ Thermal Break Technology



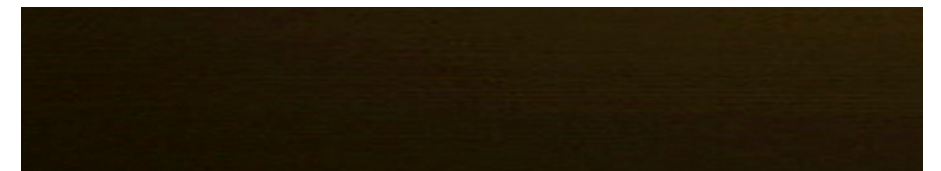
Azo-Brader™ Technology: Abrasion "hooks" displace metal along the lugs to improve adhesion in the thermal barrier pocket.
Azo-Brader™ is a trademark of Azon USA, Inc.



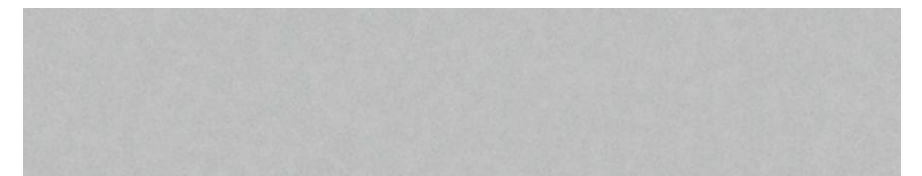
The Roeper School - Birmingham, MI
M-950 Fixed & Single-Hung Windows



Landmark Apartments - Ann Arbor, MI
M-950 Fixed & Single-Hung Windows



finish: dark bronze typical

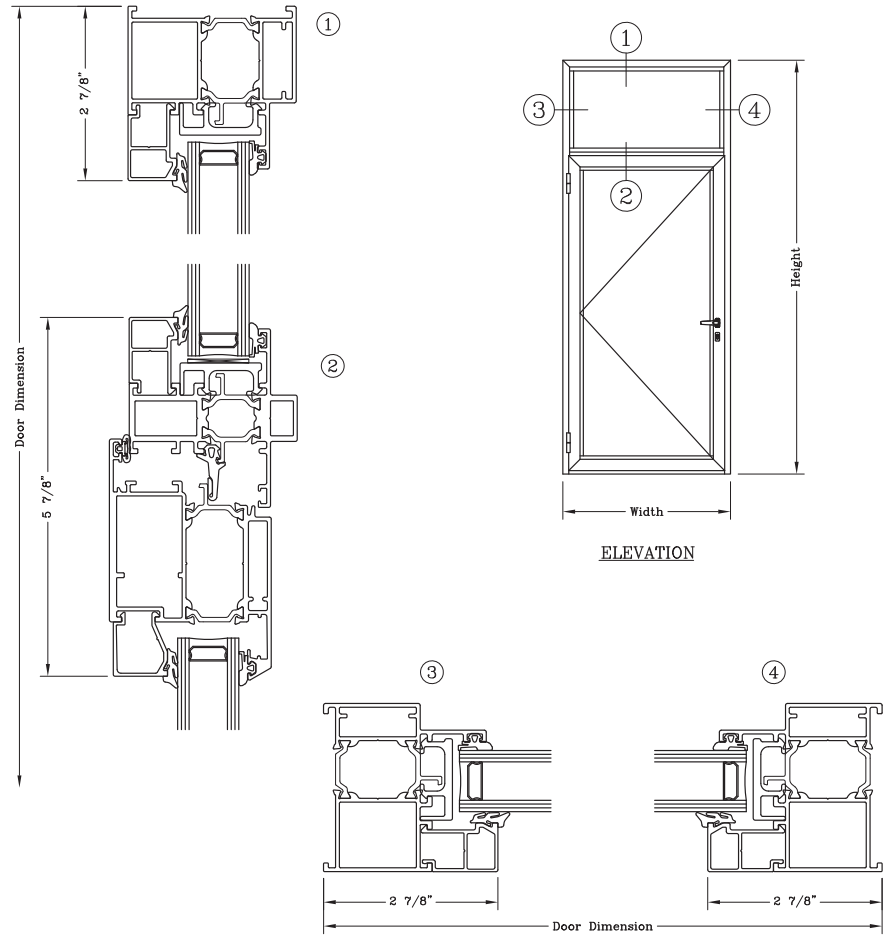


finish: clear anodized at rooftop bar

Fixed/Terrace Door – 2 3/4”
Out-Swing



Series: GT7700 (Formerly: GT9500) Manufacturing Code: GT7708.2750
 Drawn 1/2 Scale – For Custom Size Drawings Contact Graham
 Note: Sealant not shown on details. Consult Technical Services for sealing procedures

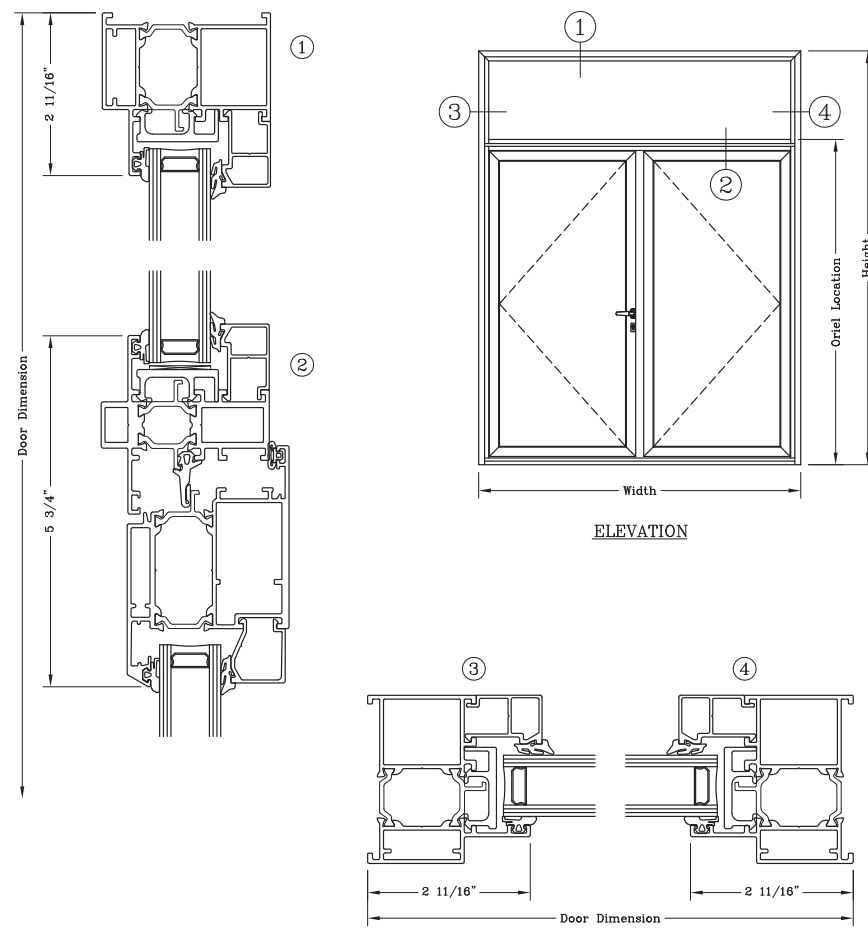


1551 Mt. Rose Avenue, York, Pennsylvania 17403-2909 • 800/755-6274 • Fax: 800/366-5097
 Web Site: www.grahamwindows.com 0413 – GT7708.2750

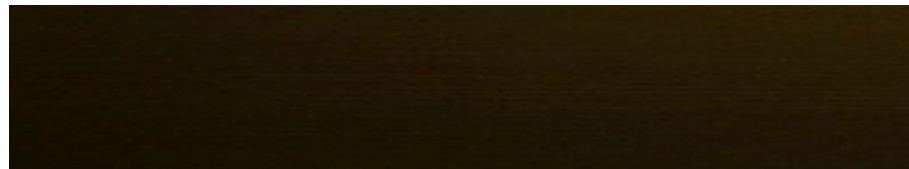
Fixed/Double Terrace Door – 2 3/4”
In-Swing



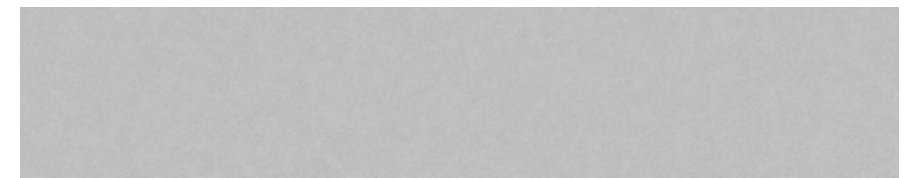
Series: GT7700 (Formerly: GT9200) Manufacturing Code: GT7715.2750
 Drawn 1/2 Scale – For Custom Size Drawings Contact Graham
 Note: Sealant not shown on details. Consult Technical Services for sealing procedures



1551 Mt. Rose Avenue, York, Pennsylvania 17403-2909 • 800/755-6274 • Fax: 800/366-5097
 Web Site: www.grahamwindows.com 0413 – GT7715.2750



finish: dark bronze typical



finish: clear anodized at rooftop bar

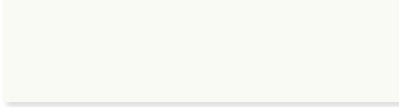


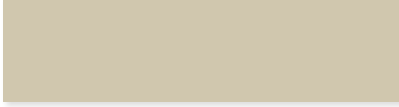
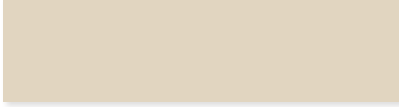

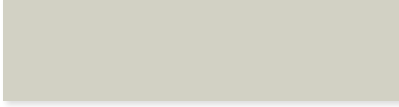
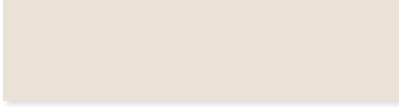



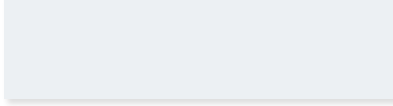



RELIABLE finishes enhance product appearance to blend with other colors selected.

These same finishes provide extended weathering resistance similar to adjacent building surfaces. RELIABLE provides most finishes available to architects and engineers. The standard finishes described herein represent those finishes usually selected, specified, or required for most applications.

Finishes and Color Guide

2 Coat - 50% and 70% PVDF - Standard Colors

The 15 colors below are available in 2 Coat (50% PVDF) or 2 Coat (70% PVDF) finishes only.

		
* BONE WHITE (24)	* DARK BRONZE (75)	* PORTLAND STONE (49)
		
* LIGHT STONE (43)	* SHELBURNE (69)	* FOREST GREEN (36)
		
* SANDSTONE (67)	* HERRINGBONE (37)	* CORONADO RED (34)
		
* SAHARA TAN (65)	* STONE GRAY (78)	* ASCOT WHITE (19)
		
* BLACK (89)	* MEDIUM BRONZE (72)	* TAUPE (52)

Pearledize 70 and Pearledize 50 Standard Colors

The 9 colors below are available in Pearledize 70, Pearledize 50, Clear or Color Anodize finishes only, and may be more expensive than the 50% and 70% PVDF colors shown above. *Italicized color names and codes are available in Anodized Finish.*

		
* DARK BRONZE (75) * DARK BRONZE (75)	* MEDIUM BRONZE (72) * MEDIUM BRONZE (72)	* CHAMPAGNE BRZ (71) * CHAMPAGNE BRZ (71)
		
* BRIGHT SILVER (88) * Clear 204R1 & 215R1 (00)	* WARM SILVER (96)	* ASTI (86)
		
* COPPER (92)	* CORAL REEF (93)	* BLUE (05)





Aluminum Plate

Product Specifications

Aluminum Composite Material (ACM) Specifications

Composition + Materials

Aluminum Composite Material consists of two aluminum sheets sandwiching a solid core of extruded thermoplastic material, processed in a continuous process with no glues or adhesives between dissimilar materials. The pre-painted coils ensure color consistency and decrease construction schedules. A protective film is applied to the material in production that should be removed after the fabrication and once panels have been installed.

Sizing + Details

Top: 0.020" (0.5mm) aluminum skin coated with a PVdF roll-coated finish containing a minimum of 70% Kynar 500®/Hylar 5000® resins.

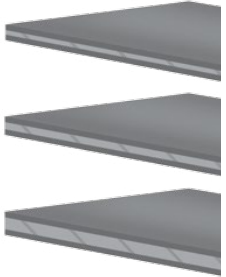
Core: Anti-toxic low density polyethylene (PE) or mineral-based fire rated (FR) core.

Bottom: 0.020" (0.5mm) aluminum skin coated with either a chrome or polyester finish.

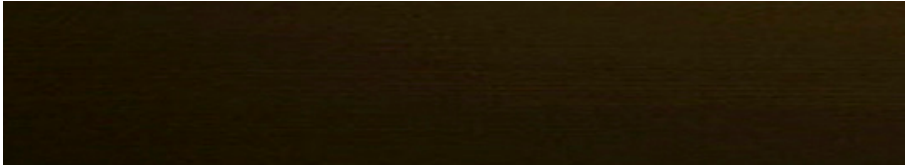
1/8" (3mm) Economical: Select applications (signage + interior)

5/32" (4mm) Standard: Multi-storey to grade applications

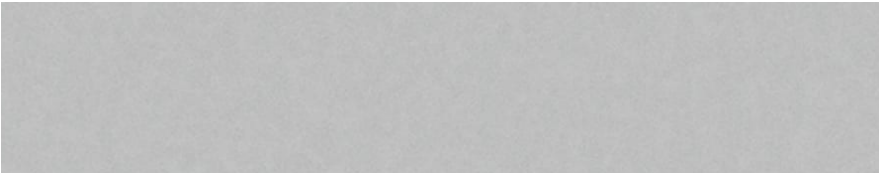
1/4" (6mm) High durability: Ideal for public spaces



Dimensions:
Thickness: 5/32" (4mm) standard with 1/8" (3mm) & 1/4" (6mm) also available.
Width: 40" (1020mm), 49" (1250mm), & 62" (1575mm).
Length: No limit. 196" (6000mm) maximum is recommended for convenient handling and delivery.



finish: dark bronze typical



finish: clear anodized at rooftop bar