

**STAFF REPORT: 2-17-20 MEETING**

**PREPARED BY: A. DYE**

**APPLICATION NUMBER: 21-7093**

**ADDRESS: 19605 STRATFORD**

**HISTORIC DISTRICT: SHERWOOD FOREST**

**APPLICANT: PAUL MILLER, PELLA WINDOWS & DOORS**

**PROPERTY OWNER: KATHLEEN MCCORMICK**

**DATE OF PROVISIONALLY COMPLETE APPLICATION: 1/13/2021**

**DATE OF STAFF SITE VISIT: 1/29/2021**

**SCOPE: REMOVE EXISTING VINYL WINDOWS AND DOOR; INSTALL REPLACEMENT FIBERGLASS WINDOWS AND DOOR**

### **EXISTING CONDITIONS**

The house located at 19605 Stratford was constructed in 1947. The asymmetrical front elevation is faced with stone veneer on the first floor and brick, in a running bond and square basket pattern, on the second floor. A steeply pitched hip roof is intersected with a two-story gable that extends slightly from the front elevation; a large bay window at the first floor protrudes this portion of the elevation even more. The top of the large gable as well as a smaller gable which intersects the cornice have stone veneer matching the stone on the first floor. A Tudor arched, recessed entry with stone block surround offers a minimally detailed yet dominate entrance. Rectangular pieces of cut stone laid along the vertical stone trim of the front door and adjacent window create a quoin-like effect. Overall, this house has restrained Tudor Revival detailing implicative of its mid-century construction.

A concrete front walk steps up from the sidewalk, bisects the flat front lawn and leads to a raised porch by way of three cascading steps. The base of the porch is faced with stone veneer matching the color, dimension and pattern on the main elevation. An aluminum (black) railing with straight posts and turned balusters runs the perimeter of the porch; a handrail extends down one side of the stairs.

Per the below designation photo, the house's original windows were no longer extant at the time of district designation. When comparing the designation photo to the existing conditions, it is likely the vinyl replacement windows present in 2002 are likely the same windows in place now. As such, they would not have required HDC approval, nor do they constitute a violation.



Designation Photo, HDAB, April 2002



HDC Staff Photo, 02/12/2021 (above and below)

## PROPOSAL

The scope of work within this application includes the replacement of all (26) vinyl windows on the house and one sliding patio door.

- Pella [Impervia](#) (fiberglass) product line
  - Window/door order shows muntin patterns, but they have been removed from the specifications (a change order immediately follows the window order)
  - Frame color: black

## STAFF OBSERVATIONS AND RESEARCH

- The Sherwood Forest local historic district was established in 2002.
- It is staff's opinion the existing windows are not character-defining features of the house.
- As the existing vinyl window units do not have architectural or historical significance, the installation of new replacement windows will not alter the existing architectural features that characterize the property.
- Tudor Revival style houses were most commonly designed with casement windows, however double-hung windows were not uncommon.
- Black window sash conforms to Color System D (Tudor, Gothic and English Cottage Styles).
- According to the National Park Service's document [Replacement Windows that meet the Standards](#):
  - Replacement windows for missing or non-historic windows must be compatible with the historic appearance and character of the building.
  - Recreation of missing historic windows is not required to meet the Standards.
- Staff requested cut sheets confirming the dimensions of the proposed window frames. As the existing frames are vinyl, staff did not ask for measurements of the current windows.
  - Sections and photographs of the proposed window sash for a casement window were submitted.
  - The Impervia sash sits in line with the window casing and offers, in staff's opinion, a similarity to a steel sash frame.

- Staff has notated the existing and proposed operation for each window opening on a document following this staff report. Black type signifies no appearance/operational change from existing to proposed (operational change from single-hung to double-hung is noted in black); red type identifies operational change; blue type identifies existing sliding windows proposed to be replaced with sliding windows.

## **ISSUES**

- The uneven planes of glass necessary for the operation of sliding windows creates an optical illusion counter to a traditional building design. Casement windows offer a similar division of glass vs. frame area while retaining a uniform glass plane within each window opening.
  - Per the aforementioned NPS document, “Replacing existing incompatible, non-historic windows with similarly incompatible new windows does not meet the Standards.”

## **RECOMMENDATION**

It is staff’s opinion the proposal should qualify for a Certificate of Appropriateness. Staff recommends the Commission approve a COA for the proposed application, as it meets the Secretary of the Interior’s Standards and the Sherwood Forest Historic District’s Elements of Design, with the condition that:

- The sliding windows be changed to double or triple casement windows (dependent on the existing division of the sliding window).

## PROJECT REVIEW EXPLANATION

Attn.: Historic Preservation Staff

Re: Taylor Residence – 19605 Stratford Rd

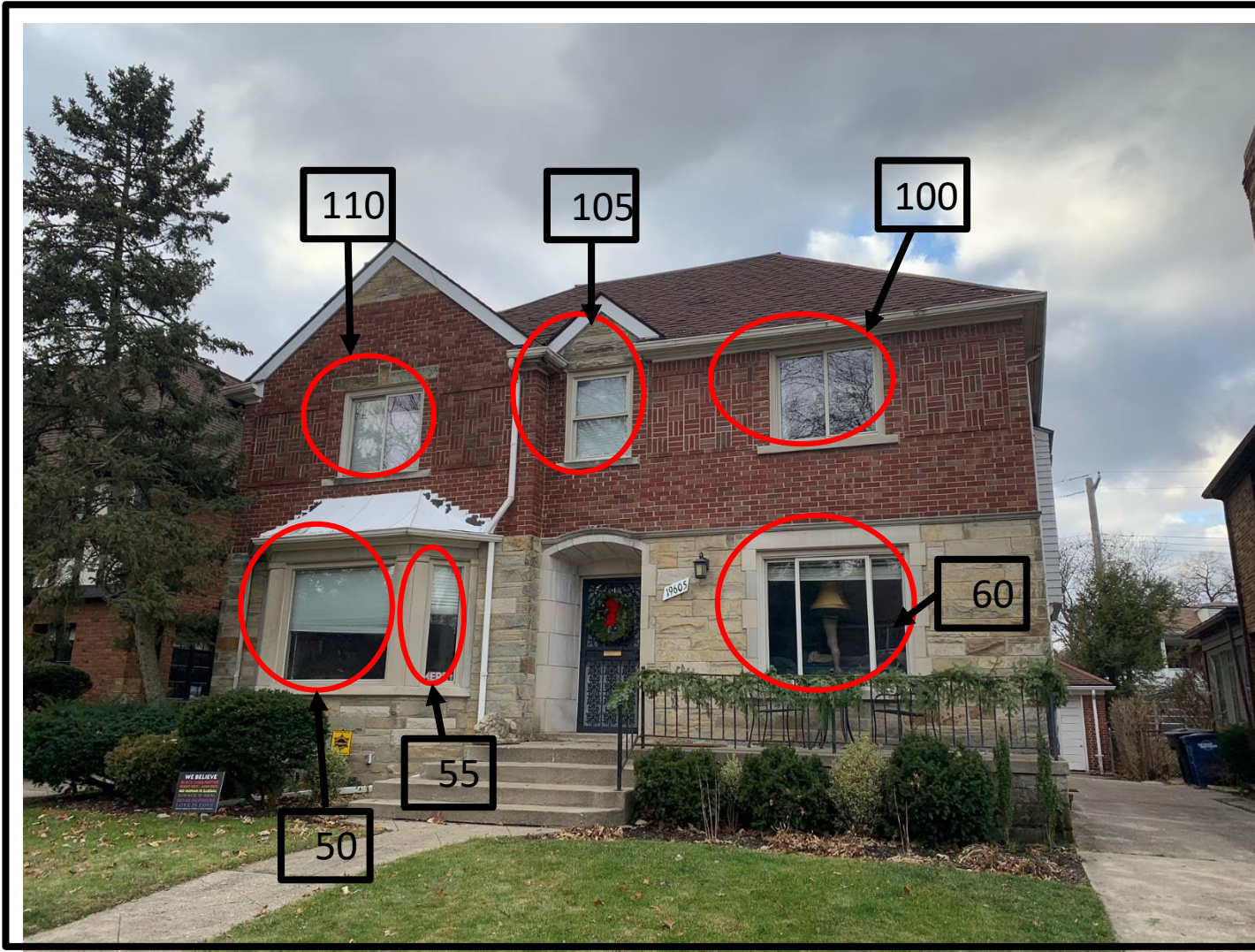
- 1.) Historic District Application – see attachment
- 2.) Photographs – see all attached photos, labeled per line item to correspond with the contract
- 3.) Description of Existing conditions:

Replace 26 Windows and 1 patio door. All of the current windows are not original to the house. They are fixed, double hung or sliding and are vinyl. The Patio door is also not original to the house and is aluminum. Existing Windows are inexpensive vinyl that are drafty and do not work properly.
- 4.) Description of Project:

Replacement of 26 Windows and 1 patio door. Homeowner would like to replace for several reasons. Existing Windows are not original to house, were inexpensive vinyl and are drafty and do not work properly
- 5.) Detailed Scope of Proposed Work:

Propose to replace the 26 Windows and 1 patio door with Pella Impervia Fiberglass. Attached contract shows all the sizes and specifications. See attached brochure for specification of Impervia Line and also attached are the order verification notes.
- 6.) Brochure/ Cut Sheet – Pella Impervia Brochure.

# 19605 Stratford – Front



110– Master Bedroom: **Currently sliding without grid**, putty color; caulked shut to prevent draft, seal broken causing condensation between panes  
Planned: **Slider, black color**

105 – Master Bathroom: Double-Hung, putty color, seal broken causing condensation between panes  
Planned: Double Hung, obscure glass, black color

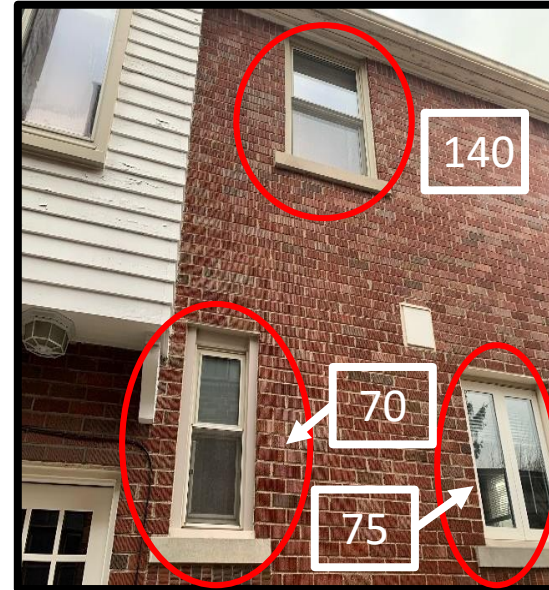
100 – Bedroom 1: **Currently sliding without grid**, putty color; caulked shut to prevent draft, caulked shut to prevent draft ,seal broken causing condensation between panes  
Planned: **Slider, black color**

50– Living Room: Currently fixed without grid, putty color, seal broken causing condensation between panes  
Planned: Direct Set Fixed Frame black color

55 – Living Room: Currently fixed without grid, putty color, seal broken causing condensation between panes  
Planned: Casement , black color

60– Den: **3 Wide Slider**, putty color; seal broken causing condensation between panes  
Planned: **Triple slider, black color**

# 19605 Stratford Road – North Side



95 – Bedroom 1: Currently Single Hung, putty color, seal broken causing condensation between panes  
Planned: Double Hung, black color

140 – Bedroom 2: Currently Single Hung, putty color, seal broken causing condensation between panes  
Planned: Double Hung, black color



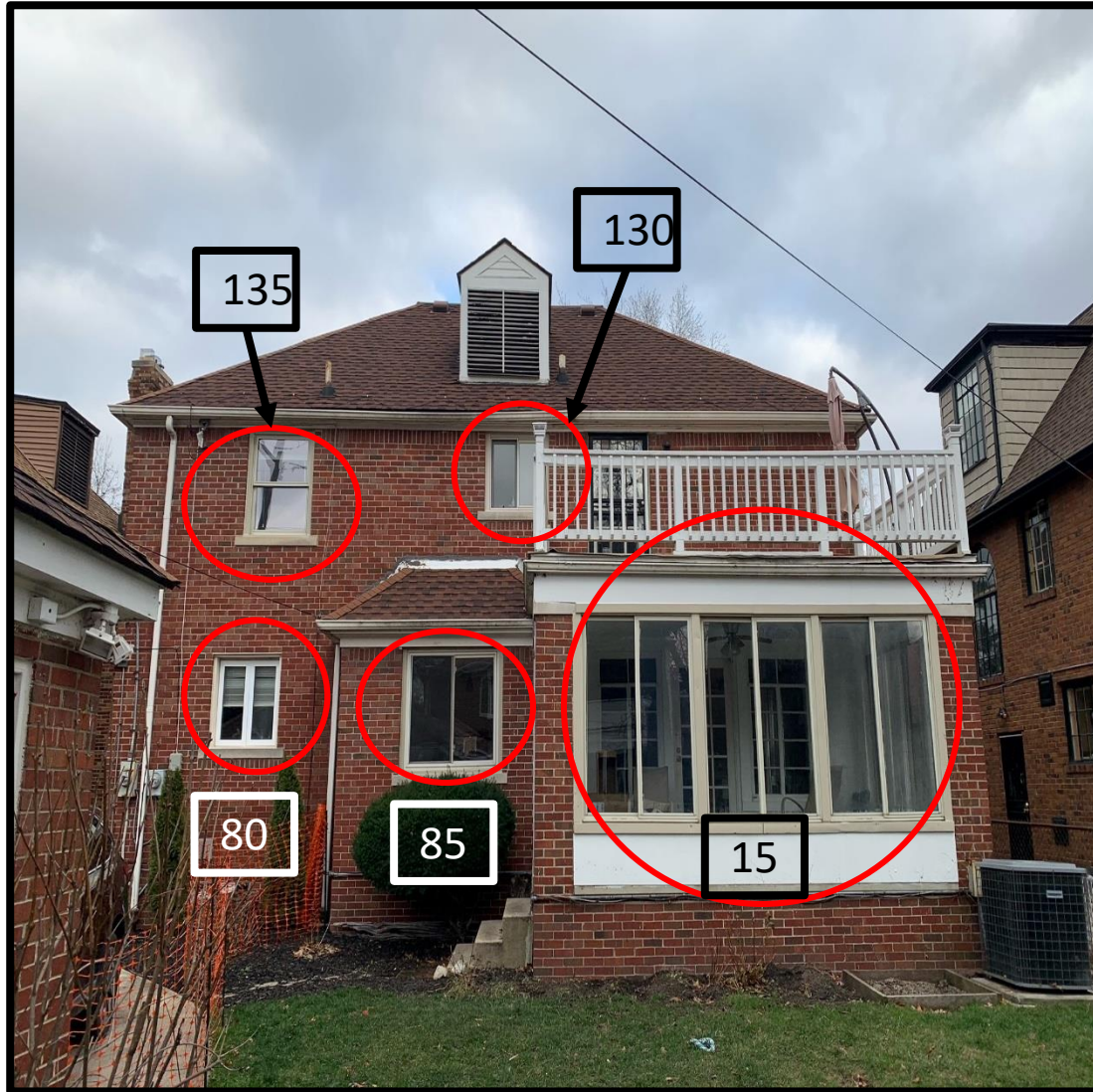
90 – Stairway Landing: **Currently sliding without grid**, putty color, seal broken causing condensation between panes  
**Planned: Direct Set Fixed Frame, black color**

65 – Den: **Currently sliding without grid**, putty color, seal broken causing condensation between panes  
**Planned: Slider, black color**

70 – Half Bathroom: **Currently Single Hung without grid**, putty color, obscure glass, seal broken causing condensation between panes  
**Planned: Casement obscure glass, black color**

75 – Kitchen: **Currently casement without grid**, putty color, seal broken causing condensation between panes  
**Planned: Double Hung, black color**

# 19605 Stratford Road - Rear



135 – Bedroom 2:  
Currently Single Hung  
without grid, putty color,  
seal broken causing  
condensation between  
panes  
Planned: Double Hung  
with grid, black color

130 – Hall Bathroom:  
Currently Slider without  
grid, putty color, obscure  
glass, seal broken causing  
condensation between  
panes  
Planned: Double Hung,  
obscure glass, black color

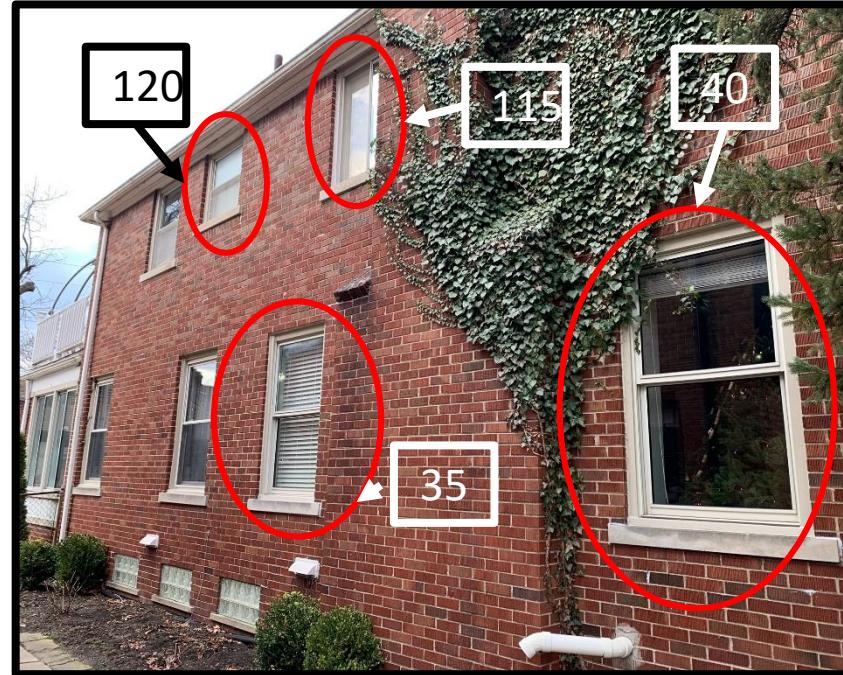
80 – Kitchen: Currently casement without grid, white color, seal broken causing condensation between panes  
Planned: Double Hung with grid, black color

85 – Breakfast Room: Currently sliding without grid, putty color, seal broken causing condensation between panes  
Planned: Sliding Window with grid, black color

17 – Sunroom: Currently Sliding Door, aluminum color, gaps between frame and door allowing weather/draft  
Planned: Double sliding door fixed, black color

15 – Sunroom: Currently 3 wide sliding without grid, putty color, windows do not close; unsecured  
Planned: 3 wide sliding without grid, black color

# 19605 Stratford Road – South Side



125 – Bedroom 3: Currently single hung without grid, putty color; caulked shut to prevent draft, seal broken causing condensation between panes  
Planned: Double Hung , black color

120 – Bathroom 3 Bath: Currently Single Hung without grid, putty color, obscure glass, seal broken causing condensation between panes  
Planned: Double Hung , obscure glass, black color

115 – Master Bedroom: **Currently sliding without grid**, putty color; caulked shut to prevent draft, caulked shut to prevent draft, seal broken causing condensation between panes  
**Planned: Double-Hung, black color**

20 – Sunroom: **Currently 2 wide sliding without grid**, putty color, windows do not close; unsecured  
Planned: **2 wide sliding without grid**, black color

25 – Dining Room: Currently Single Hung without grid, putty color.  
Planned: Double Hung , black color



30 – Dining Room: Currently Single Hung without grid, putty color.  
Planned: Double Hung , black color

35 – Living Room: Currently Single Hung without grid, putty color.  
Planned: Double Hung , black color

40 – Living Room: Currently Single Hung without grid, putty color.  
Planned: Double Hung , black color

45 - Living Room: Currently fixed without grid, putty color, seal broken causing condensation between panes  
Planned: Casement with grid, black color





front facing east



mstr bd east

LINE 110



mstr bath

east

**LINE 105**



blue bdrm

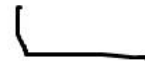
east

**LINE 100**



45,50,55 all the same

east



LINE 45, 50 , 55



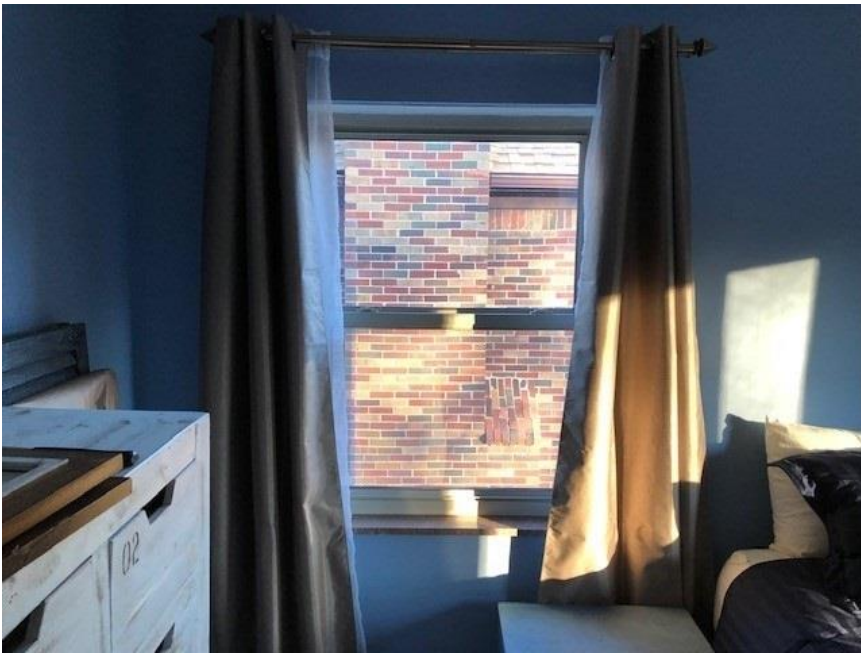
puppys room front

east

LINE 60



north side



blue bdrm

north

LINE 95



upstairs tree room

north.

**LINE 140**



puppies rm

north

**LINE 65**



bath lower level  
north

LINE 70



kitchen-1

add stops

3/4x3/4 cove

north

LINE 75



west side with the addition.



patio door

north

sunroom

LINE 10



upstairs tree room--

west

LINE 135



bathroom

west

LINE 130





kitchen-1

add stops

3/4x3/4 cove

west

LINE 80



breakfast area

west

LINE 85



sunroom

south and west



sunroom

west

3 on this wall

see next pics

LINE 15



sunroom

west

3 on this wall

see next pics

center

LINE 15 CENTER



sunroom

west

3 on this wall

LINE 15



sunroom

south

2 separate units

LINE 20



south side  
with sunroom.



exercise room  
south  
LINE 125



bath/ south

LINE 120



mstr bd

south

LINE 115



dining rm

right int view

south

LINE 25



dining rm

left from interior

south

LINE 30



living rm right

south

LINE 35



living rm left

south

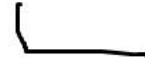
LINE 40





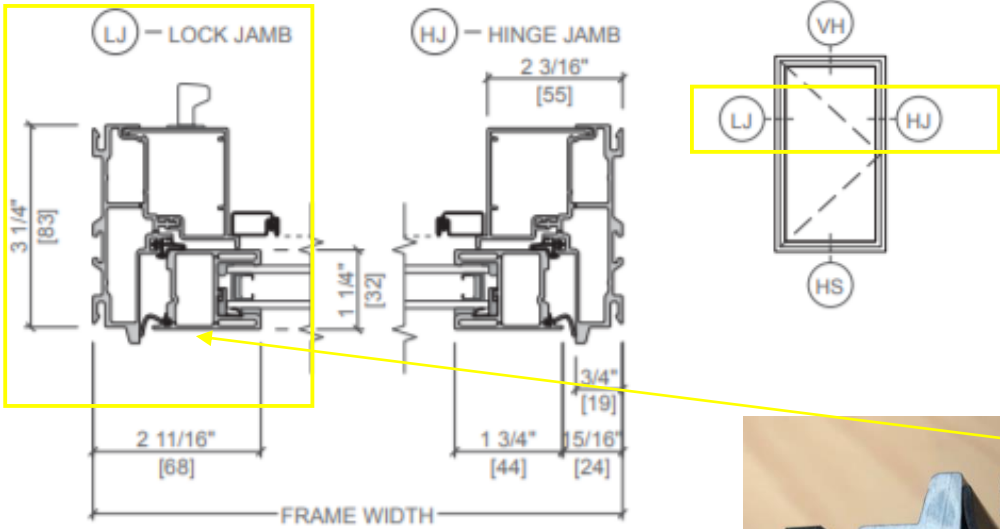
45,50,55 all the same

east



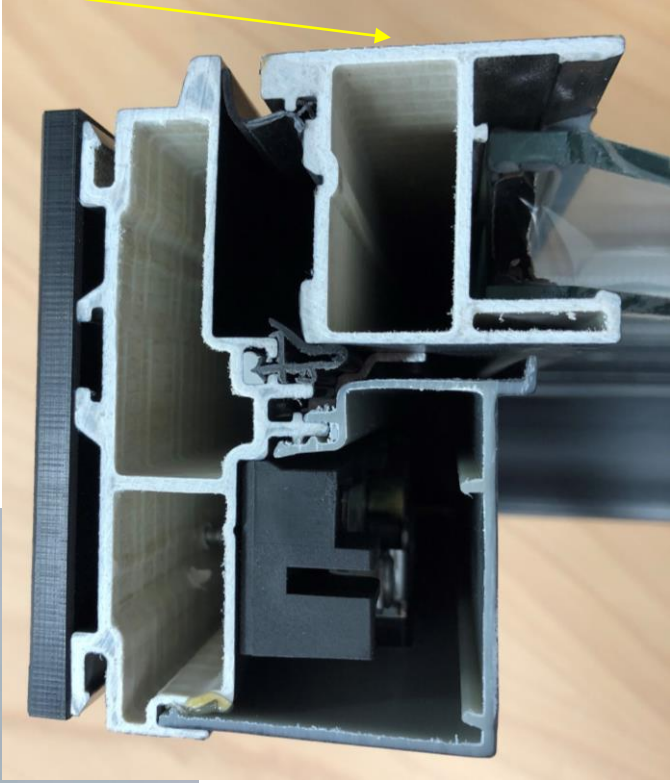
LINE 45, 50 , 55

# CASEMENT WINDOW

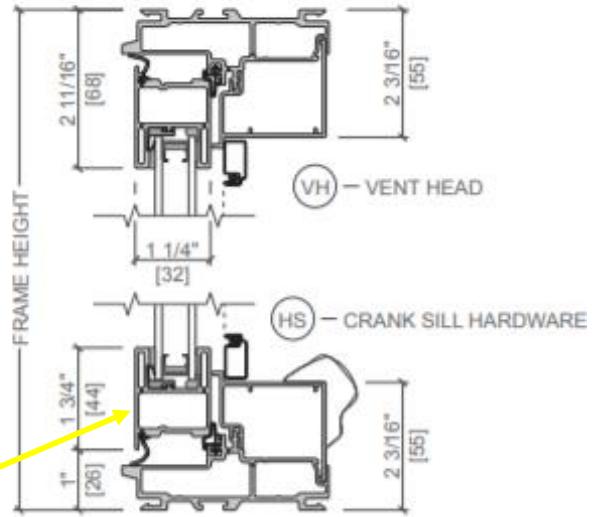
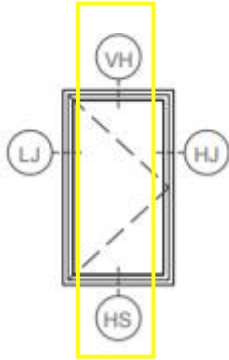


Exterior of sash shown with arrows  
Section and photo are mirror images of each other

Interior view of window sash



CASEMENT WINDOW



Outside frame  
Section and photo are mirror images of each other

CASEMENT



Photo provided by applicant



Photo from Pella's Impervia web page

DOUBLE-HUNG



Photo provided by applicant



Photo from Pella's Impervia web pages

SLIDING WINDOW



Photo provided by applicant



**Contract - Detailed**

Pella Window and Door Showroom of Plymouth  
 44695 5 Mile Road  
 Plymouth, MI 48170  
 Phone: (734) 414-6050 Fax: (734) 414-6052

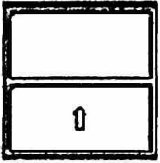
Sales Rep Name: Miller, Paul  
 Sales Rep Phone: 248-496-9135  
 Sales Rep Fax:  
 Sales Rep E-Mail: millerpr1@pella.com

Customer Information	Project/Delivery Address	Order Information
Lauren Taylor 19605 Stratford Rd Detroit, MI 48221-3501 Primary Phone: (703) 4071506 Mobile Phone: Fax Number: E-Mail: laurenst79@gmail.com Great Plains #: Customer Number: 1009868241 Customer Account: 1006020760	Lauren Taylor - All Impervia 19605 Stratford Rd Lot # Detroit, MI 48221 County:	Quote Name: Lauren Taylor - All Impervia Order Number: 742XPM002 Quote Number: 13417940 Order Type: Installed Sales Payment Terms: Tax Code: INSTALLTAX Quoted Date: 11/23/2020

Line #	Location:	Attributes
--------	-----------	------------

10 Sun Rm Door Qty 1

**Impervia, Double Sliding Door Fixed / Vent Left, Black**



PK #  
2075

1: Fixed / Vent Left Double Sliding Door  
 General Information: Standard, Duracast®, Block, Foam Insulated, 4 3/4", 4 3/4"  
 Exterior Color / Finish: Black  
 Interior Color / Finish: Black  
 Glass: Insulated Tempered Low-E Advanced Low-E Insulating Glass Argon Non High Altitude  
 Hardware Options: Footbolt Included, Matte Black  
 Screen: Sliding Screen, InView™  
 Performance Information: U-Factor 0.29, SHGC 0.29, VLT 0.54, CPD PEL-N-123-00744-00001, Performance Class LC, PG 45, Calculated Positive DP  
 Rating 45, Calculated Negative DP Rating 45, Year Rated 08|11  
 Grille: No Grille  
 Overall Rough Opening Dimensions: 72 X 79 3/4

Viewed From Exterior

QUOMATDETM010250 - PF JE (LF)	Qty	26
QUOMATDETM010201 - PF Interior Trim - Non Wood FF (LF)	Qty	26
QUOMATDETM010074 - PF Cover/Stop Pine or Oak	Qty	26
INSTARDETR020003 - Non-Wood Patio Door LF Installation- Standard	Qty	26
QUOMATDETM040100 - Coil (LF)	Qty	26
INSTARDETR900100 - Header/Jack Stud Modification	Qty	1

Customer: Lauren Taylor

Project Name: Lauren Taylor - All Impervia

Order Number: 742XPM002

Quote Number: 13417940

Line #	Location:	Attributes
--------	-----------	------------

15 Sun Rm Back Yard

### Impervia, 3-Wide Sliding Window, Black

Qty 1



PK # 2075

Viewed From Exterior

1: **SizeNon-Standard Size Vent Right / Fixed Double Slider**  
 General Information: Standard, Duracast®, Block, Foam Insulated, 3", 1 11/16"  
 Exterior Color / Finish: Black  
 Interior Color / Finish: Black  
 Glass: Insulated Low-E Advanced Low-E Insulating Glass Argon Non High Altitude  
 Hardware Options: Matte Black, No Limited Opening Hardware  
 Screen: Half Screen, InView™  
 Performance Information: U-Factor 0.28, SHGC 0.28, VLT 0.53, CPD PEL-N-103-00851-00001, Performance Class LC, PG 30, Calculated Positive DP Rating 30, Calculated Negative DP Rating 30, Year Rated 08, Egress Meets Typical 5.7 sqft (E) (United States Only)  
 Grille: No Grille

Vertical Mull 1: AlignedWith, 0.5"  
 2: **SizeNon-Standard Size Vent Right / Fixed Double Slider**  
 General Information: Standard, Duracast®, Block, Foam Insulated, 3", 1 11/16"  
 Exterior Color / Finish: Black  
 Interior Color / Finish: Black  
 Glass: Insulated Low-E Advanced Low-E Insulating Glass Argon Non High Altitude  
 Hardware Options: Matte Black, No Limited Opening Hardware  
 Screen: Half Screen, InView™  
 Performance Information: U-Factor 0.28, SHGC 0.28, VLT 0.53, CPD PEL-N-103-00851-00001, Performance Class LC, PG 30, Calculated Positive DP Rating 30, Calculated Negative DP Rating 30, Year Rated 08, Egress Meets Typical 5.7 sqft (E) (United States Only)  
 Grille: No Grille

Vertical Mull 2: AlignedWith, 0.5"  
 3: **SizeNon-Standard Size Vent Right / Fixed Double Slider**  
 General Information: Standard, Duracast®, Block, Foam Insulated, 3", 1 11/16"  
 Exterior Color / Finish: Black  
 Interior Color / Finish: Black  
 Glass: Insulated Low-E Advanced Low-E Insulating Glass Argon Non High Altitude  
 Hardware Options: Matte Black, No Limited Opening Hardware  
 Screen: Half Screen, InView™  
 Performance Information: U-Factor 0.28, SHGC 0.28, VLT 0.53, CPD PEL-N-103-00851-00001, Performance Class LC, PG 30, Calculated Positive DP Rating 30, Calculated Negative DP Rating 30, Year Rated 08, Egress Meets Typical 5.7 sqft (E) (United States Only)  
 Grille: No Grille  
 Venting Width: Equal

QUOMATDETM040100 - Coil (LF)	Qty	63
INSTARDETR020005 - Non Wood Drywall Return	Qty	63
QUOMATDETM010074 - PF Cover/Stop Pine or Oak	Qty	63
INSTARDETR900003 - Field Mull (Each)	Qty	1



Line #	Location:	Attributes	Qty
20	Sun Rm Side Yard		1

**Impervia, 2-Wide Sliding Window, Black**



PK #  
2075

Viewed From Exterior

1: SizeNon-Standard Size Vent Right / Fixed Double Slider  
 General Information: Standard, Duracast®, Block, Foam Insulated, 3", 1 11/16"  
 Exterior Color / Finish: Black  
 Interior Color / Finish: Black  
 Glass: Insulated Low-E Advanced Low-E Insulating Glass Argon Non High Altitude  
 Hardware Options: Matte Black, No Limited Opening Hardware  
 Screen: Half Screen, InView™  
 Performance Information: U-Factor 0.28, SHGC 0.28, VLT 0.53, CPD PEL-N-103-00851-00001, Performance Class LC, PG 30, Calculated Positive DP Rating 30, Calculated Negative DP Rating 30, Year Rated 08, Egress Meets Typical 5.7 sqft (E) (United States Only)  
 Grille: No Grille,  
 Vertical Mull 1: FactoryMull, 1/2" Reinforcing Mullion, Frame To Frame Width- 0.5", Mull Design Pressure- 20  
 2: SizeNon-Standard Size Vent Right / Fixed Double Slider  
 General Information: Standard, Duracast®, Block, Foam Insulated, 3", 1 11/16"  
 Exterior Color / Finish: Black  
 Interior Color / Finish: Black  
 Glass: Insulated Low-E Advanced Low-E Insulating Glass Argon Non High Altitude  
 Hardware Options: Matte Black, No Limited Opening Hardware  
 Screen: Half Screen, InView™  
 Performance Information: U-Factor 0.28, SHGC 0.28, VLT 0.53, CPD PEL-N-103-00851-00001, Performance Class LC, PG 30, Calculated Positive DP Rating 30, Calculated Negative DP Rating 30, Year Rated 08, Egress Meets Typical 5.7 sqft (E) (United States Only)  
 Grille: No Grille,  
 Venting Width: Equal

QUOMATDETM010074 - PF Cove/Stop Pine or Oak	Qty	28
INSTARDETR020005 - Non Wood Drywall Return	Qty	28
QUOMATDETM040100 - Coil (LF)	Qty	28

Line #	Location:	Attributes	Qty
25	Dining Rm Sd Yrd R		1

**Impervia, Double Hung, Black**



PK #  
2075

Viewed From Exterior

1: SizeNon-Standard Size Double Hung, Equal  
 General Information: Standard, Duracast®, Block, Foam Insulated, 3", 1 11/16"  
 Exterior Color / Finish: Black  
 Interior Color / Finish: Black  
 Glass: Insulated Low-E Advanced Low-E Insulating Glass Argon Non High Altitude  
 Hardware Options: Cam-Action Lock, Matte Black  
 Screen: Full Screen, InView™  
 Performance Information: U-Factor 0.29, SHGC 0.25, VLT 0.46, CPD PEL-N-126-00862-00002, Performance Class LC, PG 30, Calculated Positive DP Rating 30, Calculated Negative DP Rating 30, Year Rated 08/11, Egress Meets Typical 5.7 sqft (E) (United States Only)  
 Grille: GBG, No Custom Grille, 3/4" Contour, Traditional (3WZH / 3WZH), Black, Black

QUOMATDETM010074 - PF Cove/Stop Pine or Oak	Qty	17
INSTARDETR020005 - Non Wood Drywall Return	Qty	17

Customer: Lauren Taylor

Project Name: Lauren Taylor - All Impervia

Order Number: 742XPM002

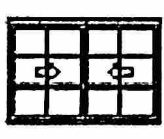
Quote Number: 13417940

QUOMATDETM040100 - Coil (LF)

Qty 17

Line #	Location:	Attributes
--------	-----------	------------

30 Dining Rm Sd Yrd L **Impervia, Double Hung, Black** Qty 1



PK # 2075

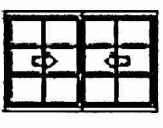
Viewed From Exterior

1: SizeNon-Standard Size Double Hung, Equal  
 General Information: Standard, Duracast®, Block, Foam Insulated, 3", 1 11/16"  
 Exterior Color / Finish: Black  
 Interior Color / Finish: Black  
 Glass: Insulated Low-E Advanced Low-E Insulating Glass Argon Non High Altitude  
 Hardware Options: Cam-Action Lock, Matte Black  
 Screen: Full Screen, InView™  
 Performance Information: U-Factor 0.29, SHGC 0.25, VLT 0.46, CPD PEL-N-126-00862-00002, Performance Class LC, PG 30, Calculated Positive DP Rating 30, Calculated Negative DP Rating 30, Year Rated 08/11, Egress Meets Typical 5.7 sqft (E) (United States Only)  
 Grille: GBG, No Custom Grille, 3/4" Contour, Traditional (3W2H / 3W2H), Black, Black

QUOMATDETM010074 - PF Cover/Stop Pine or Oak Qty 17  
 INSTARDETR020005 - Non Wood Drywall Return Qty 17  
 QUOMATDETM040100 - Coil (LF) Qty 17

Line #	Location:	Attributes
--------	-----------	------------

35 Fireplace Rm R **Impervia, Double Hung, Black** Qty 1



PK # 2075

Viewed From Exterior

1: SizeNon-Standard Size Double Hung, Equal  
 General Information: Standard, Duracast®, Block, Foam Insulated, 3", 1 11/16"  
 Exterior Color / Finish: Black  
 Interior Color / Finish: Black  
 Glass: Insulated Low-E Advanced Low-E Insulating Glass Argon Non High Altitude  
 Hardware Options: Cam-Action Lock, Matte Black  
 Screen: Full Screen, InView™  
 Performance Information: U-Factor 0.29, SHGC 0.25, VLT 0.46, CPD PEL-N-126-00862-00002, Performance Class LC, PG 30, Calculated Positive DP Rating 30, Calculated Negative DP Rating 30, Year Rated 08/11, Egress Meets Typical 5.7 sqft (E) (United States Only)  
 Grille: GBG, No Custom Grille, 3/4" Contour, Traditional (3W2H / 3W2H), Black, Black

QUOMATDETM010074 - PF Cover/Stop Pine or Oak Qty 17  
 INSTARDETR020005 - Non Wood Drywall Return Qty 17  
 QUOMATDETM040100 - Coil (LF) Qty 17

Customer: Lauren Taylor

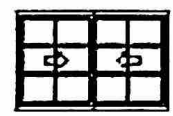
Project Name: Lauren Taylor - All Impervia

Order Number: 742XPM002

Quote Number: 13417940

Line #	Location:	Attributes	Qty
--------	-----------	------------	-----

40	Fireplace Rm L	<b>Impervia, Double Hung, Black</b>	<u>1</u>
----	----------------	-------------------------------------	----------



PK #  
2075

1: SizeNon-Standard Size Double Hung, Equal  
 General Information: Standard, Duracast®, Block, Foam Insulated, 3", 1 11/16"  
 Exterior Color / Finish: Black  
 Interior Color / Finish: Black  
 Glass: Insulated Low-E Advanced Low-E Insulating Glass Argon Non High Altitude  
 Hardware Options: Cam-Action Lock, Matte Black  
 Screen: Full Screen, InView™  
 Performance Information: U-Factor 0.29, SHGC 0.25, VLT 0.46, CPD PEL-N-126-00862-00002, Performance Class LC, PG 30, Calculated Positive DP Rating 30, Calculated Negative DP Rating 30, Year Rated 08/11, Egress Meets Typical 5.7 sqft (E) (United States Only)  
 Grille: GBG, No Custom Grille, 3/4" Contour, Traditional (3WZH / 3WZH), Black, Black

- QUOMATDETM010074 - PF Cover/Stop Pine or Oak Qty 17
- INSTARDETR020005 - Non Wood Drywall Return Qty 17
- QUOMATDETM040100 - Coil (LF) Qty 17

Line #	Location:	Attributes	Qty
--------	-----------	------------	-----

45	Fireplc Rm Front R	<b>Impervia, Casement Right, Black</b>	<u>1</u>
----	--------------------	--	----------



PK #  
2075

1: SizeNon-Standard Size Right Casement  
 General Information: Impervia Casement (Current), Standard, Duracast®, Block, Foam Insulated, 3 1/4", 1 15/16"  
 Exterior Color / Finish: Black  
 Interior Color / Finish: Black  
 Glass: Insulated Dual Low-E / Advanced Low-E Insulating Glass Argon Non High Altitude  
 Hardware Options: Standard, Wash Hinge Hardware, Fold-Away Crank, Matte Black, No Window Opening Control Device, No Limited Opening Hardware  
 Screen: Full Screen, InView™  
 Performance Information: U-Factor 0.27, SHGC 0.24, VLT 0.44, CPD PEL-N-150-00678-00002, Performance Class LC, PG 50, Calculated Positive DP Rating 50, Calculated Negative DP Rating 50, Year Rated 11, Egress Does not meet typical United States egress, but may comply with local code requirements  
 Grille: GBG, No Custom Grille, 3/4" Contour, Traditional (2W5H), Black, Black

- QUOMATDETM010074 - PF Cover/Stop Pine or Oak Qty 14
- INSTARDETR020005 - Non Wood Drywall Return Qty 14
- QUOMATDETM040100 - Coil (LF) Qty 14

Viewed From Exterior

Customer: Lauren Taylor

Project Name: Lauren Taylor - All Impervia

Order Number: 742XPM002

Quote Number: 13417940

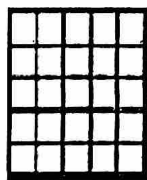
Line # Location:

Attributes

50 Fireple Rm Front C

Impervia, Direct Set Fixed Frame Rectangle, Black

Qty 1



PK # 2075

Viewed From Exterior

1: Fixed Frame Direct Set  
General Information: Impervia Direct Set (New), Standard, Duracast®, Black, Foam Insulated, 3 1/4", 1 15/16", Interior Access Only Required  
Exterior Color / Finish: Black  
Interior Color / Finish: Black  
Glass: Insulated Dual Low-E Advanced Low-E Insulating Glass Argon Non High Altitude  
Performance Information: U-Factor 0.26, SHGC 0.29, VLT 0.54, CPD PEL-N-257-00210-00002, Performance Class CW, PG 50, Calculated Positive DP Rating 50, Calculated Negative DP Rating 55, Year Rated 11  
Grille: GBG, No Custom Grille, 3/4" Contour, Traditional (5W5H), Black, Black

- QUOMATDETM010074 - PF Cover/Stop Pine or Oak
- INSTARDETR020005 - Non Wood Drywall Return
- QUOMATDETM040100 - Coil (LF)

Qty 22  
Qty 22  
Qty 22

Line # Location:

Attributes

55 Fireple Rm Front L

Impervia, Casement Left, Black

Qty 1



PK # 2075

Viewed From Exterior

1: SizeNon-Standard Size Left Casement  
General Information: Impervia Casement (Current), Standard, Duracast®, Black, Foam Insulated, 3 1/4", 1 15/16"  
Exterior Color / Finish: Black  
Interior Color / Finish: Black  
Glass: Insulated Dual Low-E Advanced Low-E Insulating Glass Argon Non High Altitude  
Hardware Options: Standard, Wash Hinge Hardware, Fold-Away Crank, Matte Black, No Window Opening Control Device, No Limited Opening Hardware  
Screen: Full Screen, InView™  
Performance Information: U-Factor 0.27, SHGC 0.24, VLT 0.44, CPD PEL-N-150-00678-00002, Performance Class LC, PG 50, Calculated Positive DP Rating 50, Calculated Negative DP Rating 50, Year Rated 11, Egress Does not meet typical United States egress, but may comply with local code requirements  
Grille: GBG, No Custom Grille, 3/4" Contour, Traditional (2W5H), Black, Black

- QUOMATDETM010074 - PF Cover/Stop Pine or Oak
- INSTARDETR020005 - Non Wood Drywall Return
- QUOMATDETM040100 - Coil (LF)

Qty 14  
Qty 14  
Qty 14

Customer: Lauren Taylor

Project Name: Lauren Taylor - All Impervia

Order Number: 742XPM002

Quote Number: 13417940

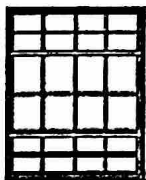
Line # Location:

Attributes

60 Puppy's Rm Front

**Impervia, Sliding Window Vent Right / Fixed / Vent Left, Black**

Qty 1



PK # 2075

Viewed From Exterior

1: SizeNon-Standard Size Vent Right / Fixed / Vent Left Triple Slider  
 General Information: Standard, Duracast®, Block, Foam Insulated, 3", 1 11/16"  
 Exterior Color / Finish: Black  
 Interior Color / Finish: Black  
 Glass: Insulated Laminated (Annealed) Low-E Advanced Low-E Insulating Glass Argon Non High Altitude  
 Hardware Options: Matte Black, No Limited Opening Hardware  
 Screen: Half Screen, In/View™  
 Performance Information: U-Factor 0.33, SHGC 0.25, VLT 0.46, CPD PEL-N-103-00856-00001, Egress Does not meet typical United States egress, but may comply with local code requirements  
 Grille: GBG, No Custom Grille, 3/4" Contour, Traditional (2W4H / 2W4H), Black, Black  
 Venting Width: 1/4 Vent

- QUOMATDETM010074 - PF Cove/Stop Pine or Oak Qty 23
- INSTARDETR020005 - Non Wood Drywall Return Qty 23
- QUOMATDETM040100 - Coil (LF) Qty 23

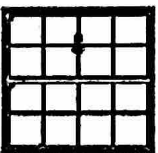
Line # Location:

Attributes

65 Puppy's Rm Side

**Impervia, Sliding Window Vent Right / Fixed, Black**

Qty 1



PK # 2075

Viewed From Exterior

1: SizeNon-Standard Size Vent Right / Fixed Double Slider  
 General Information: Standard, Duracast®, Block, Foam Insulated, 3", 1 11/16"  
 Exterior Color / Finish: Black  
 Interior Color / Finish: Black  
 Glass: Insulated Tempered Low-E Advanced Low-E Insulating Glass Argon Non High Altitude  
 Hardware Options: Matte Black, No Limited Opening Hardware  
 Screen: Half Screen, In/View™  
 Performance Information: U-Factor 0.28, SHGC 0.26, VLT 0.47, CPD PEL-N-103-00851-00004, Performance Class LC, PG 30, Calculated Positive DP Rating 30, Calculated Negative DP Rating 30, Year Rated 08, Egress Meets Typical 5.7 sqft (E) (United States Only)  
 Grille: GBG, No Custom Grille, 3/4" Contour, Traditional (2W4H / 2W4H), Black, Black  
 Venting Width: Equal

- QUOMATDETM010074 - PF Cove/Stop Pine or Oak Qty 20
- INSTARDETR020005 - Non Wood Drywall Return Qty 20
- QUOMATDETM040100 - Coil (LF) Qty 20

Customer: Lauren Taylor

Project Name: Lauren Taylor - All Impervia

Order Number: 742XPM002

Quote Number: 13417940

Line #	Location:	Attributes	Qty
--------	-----------	------------	-----

70 Downstairs Bath

**Impervia, Casement Right, Black**

1



PK # 2075

Viewed From Exterior

1: SizeNon-Standard Size Right Casement  
 General Information: Impervia Casement (Current), Standard, Duracast®, Block, Foam Insulated, 3 1/4", 1 15/16"  
 Exterior Color / Finish: Black  
 Interior Color / Finish: Black  
 Glass: Insulated Dual Obscure Low-E Obscure Advanced Low-E Insulating Glass Argon Non High Altitude  
 Hardware Options: Standard, Wash Hinge Hardware, Fold-Away Crank, Matte Black, No Window Opening Control Device, No Limited Opening Hardware  
 Screen: Full Screen, InView™  
 Performance Information: U-Factor 0.27, SHGC 0.24, VLT 0.44, CPD PEL-N-150-00678-00004, Performance Class LC, PG 50, Calculated Positive DP Rating 50, Calculated Negative DP Rating 50, Year Rated 11, Egress Does not meet typical United States egress, but may comply with local code requirements  
 Grille: GBG, No Custom Grille, 3/4" Contour, Traditional (2W3H), Black, Black

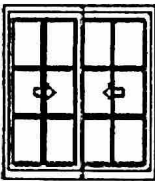
- Obscure Glass Style: Pattern62(Standard)
- QUOMATDETM010074 - PF Cover/Stop Pine or Oak Qty 10
- INSTARDETR020005 - Non Wood Drywall Return Qty 10
- QUOMATDETM040100 - Coil (LF) Qty 10

Line #	Location:	Attributes	Qty
--------	-----------	------------	-----

75 Kitchen Over Stove

**Impervia, Double Hung, Black**

1



PK # 2075

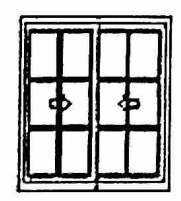
Viewed From Exterior

1: SizeNon-Standard Size Double Hung, Equal  
 General Information: Standard, Duracast®, Block, Foam Insulated, 3", 1 11/16"  
 Exterior Color / Finish: Black  
 Interior Color / Finish: Black  
 Glass: Insulated Low-E Advanced Low-E Insulating Glass Argon Non High Altitude  
 Hardware Options: Cam-Action Lock, Matte Black  
 Screen: Full Screen, InView™  
 Performance Information: U-Factor 0.29, SHGC 0.25, VLT 0.46, CPD PEL-N-126-00862-00002, Performance Class LC, PG 30, Calculated Positive DP Rating 30, Calculated Negative DP Rating 30, Year Rated 08/11, Egress Does not meet typical United States egress, but may comply with local code requirements  
 Grille: GBG, No Custom Grille, 3/4" Contour, Traditional (3W2H / 3W2H), Black, Black

- QUOMATDETM010074 - PF Cover/Stop Pine or Oak Qty 13
- INSTARDETR020005 - Non Wood Drywall Return Qty 13
- QUOMATDETM040100 - Coil (LF) Qty 13

Line #	Location:	Attributes
--------	-----------	------------

80 Kitchen Over Sink **Impervia, Double Hung, Black** Qty 1



PK # 2075

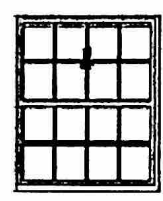
Viewed From Exterior

1: SizeNon-Standard Size Double Hung, Equal  
 General Information: Standard, Duracast®, Black, Foam Insulated, 3" x 1 11/16"  
 Exterior Color / Finish: Black  
 Interior Color / Finish: Black  
 Glass: Insulated Low-E Advanced Low-E Insulating Glass Argon Non High Altitude  
 Hardware Options: Cam-Action Lock, Matte Black  
 Screen: Full Screen, InView™  
 Performance Information: U-Factor 0.29, SHGC 0.25, VLT 0.46, CPD PEL-N-126-00862-00002, Performance Class LC, PG 30, Calculated Positive DP Rating 30, Calculated Negative DP Rating 30, Year Rated 0811, Egress Does not meet typical United States egress, but may comply with local code requirements  
 Grille: GBG, No Custom Grille, 3/4" Contour, Traditional (3W2H / 3W2H), Black, Black

- QUOMATDETM010074 - PF Cover/Stop Pine or Oak Qty 13
- INSTARDETR020005 - Non Wood Drywall Return Qty 13
- QUOMATDETM040100 - Coil (LF) Qty 13

Line #	Location:	Attributes
--------	-----------	------------

85 Breakfast Rm **Impervia, Sliding Window Vent Right / Fixed, Black** Qty 1



PK # 2075

Viewed From Exterior

1: SizeNon-Standard Size Vent Right / Fixed Double Slider  
 General Information: Standard, Duracast®, Black, Foam Insulated, 3" x 1 11/16"  
 Exterior Color / Finish: Black  
 Interior Color / Finish: Black  
 Glass: Insulated Low-E Advanced Low-E Insulating Glass Argon Non High Altitude  
 Hardware Options: Matte Black, No Limited Opening Hardware  
 Screen: Half Screen, InView™  
 Performance Information: U-Factor 0.28, SHGC 0.26, VLT 0.47, CPD PEL-N-103-00851-00002, Performance Class LC, PG 30, Calculated Positive DP Rating 30, Calculated Negative DP Rating 30, Year Rated 08, Egress Meets Typical 5.7 sqft (E) (United States Only)  
 Grille: GBG, No Custom Grille, 3/4" Contour, Traditional (2W4H / 2W4H), Black, Black  
 Venting Width: Equal

- QUOMATDETM010074 - PF Cover/Stop Pine or Oak Qty 18
- INSTARDETR020005 - Non Wood Drywall Return Qty 18
- QUOMATDETM040100 - Coil (LF) Qty 18

Customer: Lauren Taylor

Project Name: Lauren Taylor - All Impervia

Order Number: 742XPM002

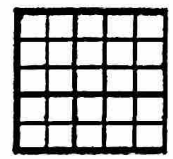
Quote Number: 13417940

Line #	Location:	Attributes	Qty
--------	-----------	------------	-----

90 Upstairs Landing

**Impervia, Direct Set Fixed Frame Rectangle, Black**

1



PK # 2075

Viewed From Exterior

1: Fixed Frame Direct Set  
 General Information: Impervia Direct Set (New), Standard, Duracast®, Block, Foam Insulated, 3 1/4", 1 15/16", Interior Access Only Required  
 Exterior Color / Finish: Black  
 Interior Color / Finish: Black  
 Glass: Insulated Dual Tempered Low-E Advanced Low-E Insulating Glass Argon Non High Altitude  
 Performance Information: U-Factor 0.26, SHGC 0.29, VLT 0.54, CPD PEL-N-257-00208-00002, Performance Class CW, PG 50, Calculated Positive DP Rating 50, Calculated Negative DP Rating 55, Year Rated 11  
 Grille: GBG, No Custom Grille, 3/4" Contour, Traditional (5W5H), Black, Black

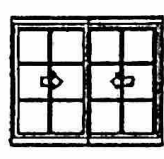
- QUOMATDETM010074 - PF Cove/Stop Pine or Oak Qty 20
- INSTARDETR020005 - Non Wood Drywall Return Qty 20
- QUOMATDETM040100 - Coil (LF) Qty 20

Line #	Location:	Attributes	Qty
--------	-----------	------------	-----

95 Upstairs Blue Rm L

**Impervia, Double Hung, Black**

1



PK # 2075

Viewed From Exterior

1: SizeNon-Standard Size Double Hung, Equal  
 General Information: Standard, Duracast®, Block, Foam Insulated, 3", 1 11/16"  
 Exterior Color / Finish: Black  
 Interior Color / Finish: Black  
 Glass: Insulated Low-E Advanced Low-E Insulating Glass Argon Non High Altitude  
 Hardware Options: Cam-Action Lock, Matte Black  
 Screen: Full Screen, InView™  
 Performance Information: U-Factor 0.29, SHGC 0.25, VLT 0.46, CPD PEL-N-126-00862-00002, Performance Class LC, PG 30, Calculated Positive DP Rating 30, Calculated Negative DP Rating 30, Year Rated 0811, Egress Does not meet typical United States egress, but may comply with local code requirements  
 Grille: GBG, No Custom Grille, 3/4" Contour, Traditional (3W2H / 3W2H), Black, Black

- QUOMATDETM010074 - PF Cove/Stop Pine or Oak Qty 15
- INSTARDETR020005 - Non Wood Drywall Return Qty 15
- QUOMATDETM040100 - Coil (LF) Qty 15



Customer: Lauren Taylor

Project Name: Lauren Taylor - All Impervia

Order Number: 742XPM002

Quote Number: 13417940

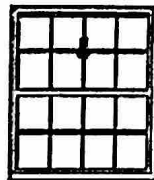
Line # Location:

Attributes

100 Upstairs Blue Rm R

**Impervia, Sliding Window Vent Right / Fixed, Black**

Qty 1



PK # 2075

Viewed From Exterior

1: SizeNon-Standard Size Vent Right / Fixed Double Slider  
 General Information: Standard, Duracast®, Block, Foam Insulated, 3", 1 11/16"  
 Exterior Color / Finish: Black  
 Interior Color / Finish: Black  
 Glass: Insulated Low-E Advanced Low-E Insulating Glass Argon Non High Altitude  
 Hardware Options: Matte Black, No Limited Opening Hardware  
 Screen: Half Screen, In/View™  
 Performance Information: U-Factor 0.28, SHGC 0.26, VLT 0.47, CPD PEL-N-103-00851-00002, Performance Class LC, PG 30, Calculated Positive DP Rating 30, Calculated Negative DP Rating 30, Year Rated 08, Egress Meets Typical 5.7 sqft (E) (United States Only)  
 Grille: GBG, No Custom Grille, 3/4" Contour, Traditional (2W4H / 2W4H), Black, Black  
 Venting Width: Equal

QUOMATDETM010074 - PF Cover/Stop Pine or Oak Qty 18  
 INSTARDETR020005 - Non Wood Drywall Return Qty 18  
 QUOMATDETM040100 - Coil (LF) Qty 18

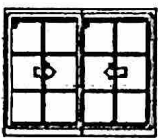
Line # Location:

Attributes

105 Master Bath

**Impervia, Double Hung, Black**

Qty 1



PK # 2075

Viewed From Exterior

1: SizeNon-Standard Size Double Hung, Equal  
 General Information: Standard, Duracast®, Block, Foam Insulated, 3", 1 11/16"  
 Exterior Color / Finish: Black  
 Interior Color / Finish: Black  
 Glass: Insulated Tempered Obscure Low-E Obscure Advanced Low-E Insulating Glass Argon Non High Altitude  
 Hardware Options: Cam-Action Lock, Matte Black  
 Screen: Full Screen, In/View™  
 Performance Information: U-Factor 0.29, SHGC 0.25, VLT 0.46, CPD PEL-N-126-00862-00004, Performance Class LC, PG 30, Calculated Positive DP Rating 30, Calculated Negative DP Rating 30, Year Rated 08|11, Egress Does not meet typical United States egress, but may comply with local code requirements  
 Grille: GBG, No Custom Grille, 3/4" Contour, Traditional (3W2H / 3W2H), Black, Black

Obscure Glass Style: Pattern62(Standard)  
 QUOMATDETM010074 - PF Cover/Stop Pine or Oak Qty 15  
 INSTARDETR020005 - Non Wood Drywall Return Qty 15  
 QUOMATDETM040100 - Coil (LF) Qty 15

Customer: Lauren Taylor

Project Name: Lauren Taylor - All Impervia

Order Number: 742XPM002

Quote Number: 13417940

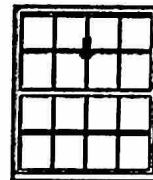
Line # Location:

Attributes

110 Master Bed Rm L

Impervia, Sliding Window Vent Right / Fixed, Black

Qty 1



PK # 2075

1: SizeNon-Standard Size Vent Right / Fixed Double Slider  
General Information: Standard, Duracast®, Black, Foam Insulated, 3", 1 11/16"

Exterior Color / Finish: Black  
Interior Color / Finish: Black

Glass: Insulated Low-E Advanced Low-E Insulating Glass Argon Non High Altitude  
Hardware Options: Matte Black, No Limited Opening Hardware

Screen: Half Screen, InView™

Performance Information: U-Factor 0.28, SHGC 0.26, VLT 0.47, CPD PEL-N-103-00851-00002, Performance Class LC, PG 30, Calculated Positive DP Rating 30, Calculated Negative DP Rating 30, Year Rated 08, Egress Meets Typical 5.7 sqft (E) (United States Only)

Grille: GBG, No Custom Grille, 3/4" Contour, Traditional (2W4H / 2W4H), Black, Black  
Venting Width: Equal

QUOMATDETM010074 - PF Cove/Stop Pine or Oak

Qty 18

INSTARDETR020005 - Non Wood Drywall Return

Qty 18

QUOMATDETM040100 - Coil (LF)

Qty 18

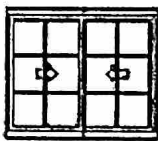
Line # Location:

Attributes

115 Master Bed Rm R

Impervia, Double Hung, Black

Qty 1



PK # 2075

1: SizeNon-Standard Size Double Hung, Equal  
General Information: Standard, Duracast®, Black, Foam Insulated, 3", 1 11/16"

Exterior Color / Finish: Black  
Interior Color / Finish: Black

Glass: Insulated Low-E Advanced Low-E Insulating Glass Argon Non High Altitude  
Hardware Options: Cam-Action Lock, Matte Black

Screen: Full Screen, InView™

Performance Information: U-Factor 0.29, SHGC 0.25, VLT 0.46, CPD PEL-N-126-00852-00002, Performance Class LC, PG 30, Calculated Positive DP Rating 30, Calculated Negative DP Rating 30, Year Rated 08/11, Egress Does not meet typical United States egress, but may comply with local code requirements

Grille: GBG, No Custom Grille, 3/4" Contour, Traditional (3W2H / 3W2H), Black, Black

QUOMATDETM010074 - PF Cove/Stop Pine or Oak

Qty 15

INSTARDETR020005 - Non Wood Drywall Return

Qty 15

QUOMATDETM040100 - Coil (LF)

Qty 15

Viewed From Exterior

For more information regarding the finishing, maintenance, service and warranty of all Pella® products, visit the Pella® website at www.pella.com

Printed on 11/23/2020

Contract - Detailed

Page

12 of

23

Customer: Lauren Taylor

Project Name: Lauren Taylor - All Impervia

Order Number: 742XPM002

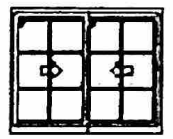
Quote Number: 13417940

Line #	Location:	Attributes	Qty
--------	-----------	------------	-----

120 Exercise Rm Bath

**Impervia, Double Hung, Black**

Qty 1



PK # 2075

Viewed From Exterior

1: SizeNon-Standard Size Double Hung, Equal  
 General Information: Standard, Duracast®, Block, Foam Insulated, 3", 1 11/16"  
 Exterior Color / Finish: Black  
 Interior Color / Finish: Black  
 Glass: Insulated Tempered Obscure Low-E Obscure Advanced Low-E Insulating Glass Argon Non High Altitude  
 Hardware Options: Cam-Action Lock, Matte Black  
 Screen: Full Screen, InView™  
 Performance Information: U-Factor 0.29, SHGC 0.25, VLT 0.46, CPD PEL-N-126-00862-00004, Performance Class LC, PG 30, Calculated Positive DP Rating 30, Calculated Negative DP Rating 30, Year Rated 08/11, Egress Does not meet typical United States egress, but may comply with local code requirements  
 Grille: GBG, No Custom Grille, 3/4" Contour, Traditional (3W2H / 3W2H), Black, Black

Obscure Glass Style: Pattern62(Standard)

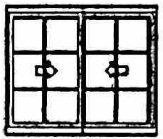
- QUOMATDETM010074 - PF Cover/Stop Pine or Oak Qty 15
- INSTARDETR020005 - Non Wood Drywall Return Qty 15
- QUOMATDETM040100 - Coil (LF) Qty 15

Line #	Location:	Attributes	Qty
--------	-----------	------------	-----

125 Exercise Rm

**Impervia, Double Hung, Black**

Qty 1



PK # 2075

Viewed From Exterior

1: SizeNon-Standard Size Double Hung, Equal  
 General Information: Standard, Duracast®, Block, Foam Insulated, 3", 1 11/16"  
 Exterior Color / Finish: Black  
 Interior Color / Finish: Black  
 Glass: Insulated Low-E Advanced Low-E Insulating Glass Argon Non High Altitude  
 Hardware Options: Cam-Action Lock, Matte Black  
 Screen: Full Screen, InView™  
 Performance Information: U-Factor 0.29, SHGC 0.25, VLT 0.46, CPD PEL-N-126-00862-00002, Performance Class LC, PG 30, Calculated Positive DP Rating 30, Calculated Negative DP Rating 30, Year Rated 08/11, Egress Does not meet typical United States egress, but may comply with local code requirements  
 Grille: GBG, No Custom Grille, 3/4" Contour, Traditional (3W2H / 3W2H), Black, Black

- QUOMATDETM010074 - PF Cover/Stop Pine or Oak Qty 15
- INSTARDETR020005 - Non Wood Drywall Return Qty 15
- QUOMATDETM040100 - Coil (LF) Qty 15

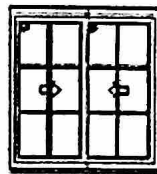
Line #	Location:	Attributes
--------	-----------	------------

130 Upstairs Bath

**Impervia, Double Hung, Black**

Qty 1

PK # 2075



Viewed From Exterior

1: SizeNon-Standard Size Double Hung, Equal  
 General Information: Standard, Duracast®, Block, Foam Insulated, 3", 1 11/16"  
 Exterior Color / Finish: Black  
 Interior Color / Finish: Black  
 Glass: Insulated Tempered Obscure Low-E Obscure Advanced Low-E Insulating Glass Argon Non High Altitude  
 Hardware Options: Cam-Action Lock, Matte Black  
 Screen: Full Screen, InView™  
 Performance Information: U-Factor 0.29, SHGC 0.25, VLT 0.46, CPD PEL-N-126-00862-00004, Performance Class LC, PG 30, Calculated Positive DP Rating 30, Calculated Negative DP Rating 30, Year Rated 08/11, Egress Does not meet typical United States egress, but may comply with local code requirements  
 Grille: GBG, No Custom Grille, 3/4" Contour, Traditional (3W2H / 3W2H), Black, Black

Obscure Glass Style: Pattern62(Standard)

- QUOMATDETM010074 - PF Cover/Stop Pine or Oak Qty 13
- INSTARDETR020005 - Non Wood Drywall Return Qty 13
- QUOMATDETM040100 - Coil (LF) Qty 13

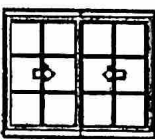
Line #	Location:	Attributes
--------	-----------	------------

135 Upstairs Tree Rm L

**Impervia, Double Hung, Black**

Qty 1

PK # 2075



Viewed From Exterior

1: SizeNon-Standard Size Double Hung, Equal  
 General Information: Standard, Duracast®, Block, Foam Insulated, 3", 1 11/16"  
 Exterior Color / Finish: Black  
 Interior Color / Finish: Black  
 Glass: Insulated Low-E Advanced Low-E Insulating Glass Argon Non High Altitude  
 Hardware Options: Cam-Action Lock, Matte Black  
 Screen: Full Screen, InView™  
 Performance Information: U-Factor 0.29, SHGC 0.25, VLT 0.46, CPD PEL-N-126-00862-00002, Performance Class LC, PG 30, Calculated Positive DP Rating 30, Calculated Negative DP Rating 30, Year Rated 08/11, Egress Does not meet typical United States egress, but may comply with local code requirements  
 Grille: GBG, No Custom Grille, 3/4" Contour, Traditional (3W2H / 3W2H), Black, Black

- QUOMATDETM010074 - PF Cover/Stop Pine or Oak Qty 15
- INSTARDETR020005 - Non Wood Drywall Return Qty 15
- QUOMATDETM040100 - Coil (LF) Qty 15

Customer: Lauren Taylor

Project Name: Lauren Taylor - All Impervia

Order Number: 742XPM002

Quote Number: 13417940

Line # Location:

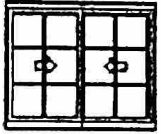
140 Upstairs Tree Rm R

Impervia, Double Hung, Black

Attributes

Qty

1



PK # 2075

Viewed From Exterior

1: Size Non-Standard Size Double Hung, Equal  
 General Information: Standard, Duracast®, Block, Foam Insulated, 3", 1 11/16"  
 Exterior Color / Finish: Black  
 Interior Color / Finish: Black  
 Glass: Insulated Low-E Advanced Low-E Insulating Glass Argon Non High Altitude  
 Hardware Options: Cam-Action Lock, Matte Black  
 Screen: Full Screen, InView™  
 Performance Information: U-Factor 0.29, SHGC 0.25, VLT 0.46, CPD PEL-N-126-00862-00002, Performance Class L.C., PG 30, Calculated Positive DP Rating 30, Calculated Negative DP Rating 30, Year Rated 08/11, Egress Does not meet typical United States egress, but may comply with local code requirements  
 Grille: GBG, No Custom Grille, 3/4" Contour, Traditional (3W2H / 3W2H), Black, Black

QUOMATDETM010074 - PF Cover/Stop Pine or Oak Qty 15  
 INSTARDETR020005 - Non Wood Drywall Return Qty 15  
 QUOMATDETM040100 - Coil (LF) Qty 15

Line # Location:

145 Admin Fee

ADPPRRDETR010010 - Administration & Processing Fee

Attributes

Qty

1

For more information regarding the finishing, maintenance, service and warranty of all Pella® products, visit the Pella® website at [www.pella.com](http://www.pella.com)

Printed on 11/23/2020

Contact - Detailed

Page 15 of 23

Customer: Lauren Taylor

Project Name: Lauren Taylor - All Imperia

Order Number: 742XPM002

Quote Number: 13417940

Line #	Location:	Attributes
--------	-----------	------------

150	Branch Promo	PROMOTDETR010004 - Branch Promotion
		Qty 1

Line #	Location:	Attributes
--------	-----------	------------

155	Large Job Promo	PROMOTDETR010006 - Large Job Promotion
		Qty 1

Line #	Location:	Attributes
--------	-----------	------------

160	Buy Today Promo	PROMOTDETR010005 - Buy Today Promotion
		Qty 1

Thank You For Purchasing Pella® Products

For more information regarding the finishing, maintenance, service and warranty of all Pella® products, visit the Pella® website at [www.pella.com](http://www.pella.com)

**PELLA WARRANTY:**

Pella products are covered by Pella's limited warranties in effect at the time of sale. All applicable product warranties are incorporated into and become a part of this contract. Please see the warranties for complete details, taking special note of the two important notice sections regarding installation of Pella products and proper management of moisture within the wall system. Neither Pella Corporation nor the Seller will be bound by any other warranty unless specifically set out in this contract. However, Pella Corporation will not be liable for branch warranties which create obligations in addition to or obligations which are inconsistent with Pella written warranties.

Clear opening (egress) information does not take into consideration the addition of a Rolscreen [or any other accessory] to the product. You should consult your local building code to ensure your Pella products meet local egress requirements.

Per the manufacturer's limited warranty, unfinished mahogany exterior windows and doors must be finished upon receipt prior to installing and refinished annually, thereafter. Variations in wood grain, color, texture or natural characteristics are not covered under the limited warranty.

**INSYNCTIVE PRODUCTS:** In addition, Pella Insynctive Products are covered by the Pella Insynctive Products Software License Agreement and Pella Insynctive Products Privacy Policy in effect at the time of sale, which can be found at [insynctive.pella.com](https://www.pella.com/insynctive-products). By installing or using Your Insynctive Products you are acknowledging the Insynctive Software Agreement and Privacy Policy are part of the terms of sale.

**Notice of Collection of Personal Information:** We may collect your personal information when you interact with us. Under the California Consumer Privacy Act (CCPA), California residents have specific rights to request this information, request to delete this information, and opt out of the sharing or sale of this information to third parties. To learn more about our collection practices and your rights under the CCPA please visit our link <https://www.pella.com/california-rights-policy/> at [pella.com](https://www.pella.com).

**ARBITRATION AND CLASS ACTION WAIVER ("ARBITRATION AGREEMENT")**

**YOU and Pella and its subsidiaries and the Pella Branded Distributor AGREE TO ARBITRATE DISPUTES ARISING OUT OF OR RELATING TO YOUR PELLA PRODUCTS (INCLUDES PELLA GOODS AND PELLA SERVICES) AND WAIVE THE RIGHT TO HAVE A COURT OR JURY DECIDE DISPUTES. YOU WAIVE ALL RIGHTS TO PROCEED AS A MEMBER OR REPRESENTATIVE OF A CLASS ACTION, INCLUDING CLASS ARBITRATION, REGARDING DISPUTES ARISING OUT OF OR RELATING TO YOUR PELLA PRODUCTS.** You may opt out of this Arbitration Agreement by providing notice to Pella no later than ninety (90) calendar days from the date You purchased or otherwise took ownership of Your Pella Goods. To opt out, You must send notice by e-mail to [pellawebsupport@pella.com](mailto:pellawebsupport@pella.com), with the subject line: "Arbitration Opt Out" or by calling (877) 473-5527. Opting out of the Arbitration Agreement will not affect the coverage provided by any applicable limited warranty pertaining to Your Pella Products. For complete information, including the full terms and conditions of this Arbitration Agreement, which are incorporated herein by reference, please visit [www.pella.com/arbitration](http://www.pella.com/arbitration) or e-mail to [pellawebsupport@pella.com](mailto:pellawebsupport@pella.com), with the subject line: "Arbitration Details" or call (877) 473-5527. **D'ARBITRAGE ET RENONCIATION AU RECOURS COLLECTIF ("convention d'arbitrage") EN FRANÇAIS SEE PELLA.COM/ARBITRATION. DE ARBITRAJE Y RENUNCIA COLECTIVA ("acuerdo de arbitraje") EN ESPAÑOL VER PELLA.COM/ARBITRATION.**

Seller shall not be held liable for failure or delay in the performance of its obligations under this Agreement, if such performance is hindered or delayed by the occurrence of an act or event beyond the Seller's reasonable control (force majeure event), including but not limited to earthquakes, unusually severe weather and other Acts of God, fire, strikes and labor unrest, epidemics, riots, war, civil unrest, and government interventions. Seller shall give timely notice of a force majeure event and take such reasonable action to mitigate the impacts of such an event.

**Product Performance Information:**

U-Factor, Solar Heat Gain Coefficient (SHGC), and Visible Light Transmittance (VLT) are certified by the National Fenestration Rating Council (NFRC). Manufacturer stipulates that these ratings conform to applicable NFRC procedures for determining whole product performance. NFRC ratings are determined for a fixed set of environmental conditions and a specific product size. NFRC does not recommend any products and does not warrant the suitability of any product for

For more information regarding the finishing, maintenance, service and warranty of all Pella@ products, visit the Pella@ website at [www.pella.com](http://www.pella.com)

any specific use.

Design Pressure (DP), Performance Class, and Performance Grade (PG) are certified by a third party organization, in many cases the Window and Door Manufacturers Association (WDMA). The certification requires the performance of at least one product of the product line to be tested in accordance with the applicable performance standards and verified by an independent party. The certification indicates that the product(s) of the product line passed the applicable tests. The certification does not apply to milled and/or product combinations unless noted. Actual product results will vary and change over the products life.

For more performance information along with information on Florida Product Approval System (FPAS) Number and Texas Dept. of Insurance (TDI) number go to [www.pella.com/performance](http://www.pella.com/performance).

### Pella General Installation Review

**Pella Will:**

- Deliver and unload products purchased per contract
- Place drop cloths on work area flooring
- Remove interior and exterior trim
- Provide all equipment and materials necessary to install new products
- Inspect all products purchased per contract
- Install all products per contract
- Insulate and caulk around products
- Verify that all products installed are in good working order
- Remove drop clothes, vacuum, and remove all debris
- Remove all old products from premises upon completion
- All work to be performed during normal working hours of 8:00 a.m. to 5:00 pm Monday-Friday, unless other arrangements are made.
- Installation and prefinish is warranted for the period of two years on materials and workmanship. Warranty time frame begins at date of completion.

**Homeowner Will:**

*PELLA WILL FULL PERMIT*

- Secure building permit if needed
- Remove existing shutters and awnings
- Reinstall shutters and awnings
- Cut back or tie trees, bushes and shrubs two feet from exterior wall
- Arrange to have alarm system disconnected and reinstalled
- Arrange to have any plumbing and/or electrical repairs or changes made by appropriate licensed contractor prior to install date
- Provide site electricity for power tools
- All blinds and interior window treatments need to be removed prior to your installation date.
- All furniture needs to be moved at least 6 feet away from any window or door begin replaced.
- All personal items, wall hangings and collectibles must be removed prior to you installation date.
- Any non-movable furniture (example: pianos, built in cabinets, etc.) must be cleared of items and be surface dusted prior to installation.

For more information regarding the finishing, maintenance, service and warranty of all Pella® products, visit the Pella® website at [www.pella.com](http://www.pella.com)



Customer: Lauren Taylor

Project Name: Lauren Taylor - All Impervia

Order Number: 742XPM002

Quote Number: 13417940

- Have pcts controlled so they do not get loose
- Remove all stickers from products installed
- Wash all interior and exterior glass surfaces

PWD, LLC ("Seller")  
 1940 Opdyke Ct.  
 Auburn Hills, Michigan 48326  
 Michigan Builder License #: 2102182819

This sales agreement consists of and is subject to the Terms and Conditions set forth on subsequent pages of this document as well as the terms and conditions of the Pella Product Warranties available at [www.pella.com](http://www.pella.com) and Seller's Installation Warranty and Seller's Finish Warranty (if Seller is providing finishing services) and referred to collectively as the "Contract". Contract must be signed within Fourteen (14) days of Quote Date for pricing to remain firm. Contract becomes binding only upon written acceptance PWD, LLC ("Pella Windows and Doors" or "Seller") management.

- \* Customer certifies that their home was built in: 1997; (int.) AD X
- \* If the home was built prior to 1978, the Customer(s) has been provided with a "Renovate Right: Important Lead Hazard Information for Families, Child Care Providers and Schools" pamphlet: (int.) AD X
- \* Buyer understands the Pella Care Guarantee is the Seller's Installation Limited Warranty and Service Agreement and Pella product limited Warranty(ies) (int.) AD X
- \* Buyer(s) has received the Seller's Installation Limited Warranty and Service Agreement for Pella products (int.) AD X
- \* Buyer(s) has received the Pella product Limited warranty or reviewed at [pella.com/warranty\(int.\)](http://pella.com/warranty(int.)) AD X
- \* Seller is doing finishing and Buyer(s) has received the Seller's Finish Warranty (int.) AD X; Product is finished by Pella and the finish is covered as set forth in the Pella product warranty (int.) AD X; Product is not finished by Seller or Pella and Buyer(s) will undertake prompt finishing in accordance with applicable instructions (int.) N/A
- \* Customer authorizes Seller to charge on the credit of the customer the balance immediately upon substantial completion (int.) AD X
- \* Customer has reviewed and approved all pre-finish selections (int.) AD X
- \* Pella Windows and Doors is not responsible for the removal or reinstallation of existing alarm contacts. It is the responsibility of the customer to have the alarm contacts re-installed by the alarm company of choice. The installers can remove the existing contacts - if you choose, but are not responsible for replacing them in the event that they are damaged during removal. AD X
- \* Customer is aware that the clear oak threshold doesn't match the color/stain of the Impervia/Lifestyle/Architect sliding & hinged doors & fiberglass entry door systems. AD X

For more information regarding the finishing, maintenance, service and warranty of all Pella® products, visit the Pella® website at [www.pella.com](http://www.pella.com)  
 Printed on 11/23/2020 Contract - Detailed

Customer: Lauren Taylor

Project Name: Lauren Taylor - All Impervia


Order Number: 742XPM002


Quote Number: 13417940

\* I hereby authorize Pella Corporation, its affiliates and/or subsidiaries to use, reproduce, and/or publish photographs and/or video that may pertain to me and my project, including materials described below, without compensation. I understand that this material may be used in various communications (e.g. Website, e-newsletters, promotional materials, etc).  
Consequently, the Corporation may publish materials, photographs, and/or make reference to the project in a manner that the Corporation or project sponsor deems appropriate. N/A

X Lauren S. Taylor  
Customer Name (Please Print)

Paul Miller  
Pella Windows and Doors Sales Representative

  
Customer Signature Date: 11/25/20

  
Pella Windows and Doors Sales Representative Signature Date: 11-25-20

**TERMS AND CONDITIONS**

**ARTICLE 1 - SCOPE OF WORK.** PWD, LLC ("Pella Windows and Doors" or "Seller") is a wholly-owned subsidiary of Pella Corporation ("Pella"). Seller shall provide and install the products and accessories and provide the services described above on premises of the Buyer(s) identified as the Project/Delivery Address (the "Property").

All work to be performed during normal working hours of 7:00 a.m. to 5:00 pm Monday-Friday, unless other arrangements are made. Depending on the Buyers' product choice and the required installation method, Seller cannot guarantee that the newly installed Pella product will line up with the original paint line or wallpaper, and the new Pella product may result in less visible glass area than that of the original product.

**ARTICLE 2 - PRICE AND PAYMENT TERMS.** Buyer(s) agrees to pay Seller the amount set forth in this Contract (the "Contract Price") and any sums due in addition for taxes or other charges expressly allowed under the Contract. The Contract Price does not include any taxes, including sales, consumer, use and similar taxes. Taxes shall be added to the Contract Price. Buyer(s) shall deposit (the "Deposit") with Seller immediately upon execution of this Contract the amount set forth on the first page of this Contract. If installation services are deferred at Buyer(s)' request beyond 7 days of the scheduled date set forth in this Contract, the Contract Price shall be subject to a 2% of Contract Price or \$25 a month warehousing charge, whichever is greater. The Buyer(s) shall pay the remainder of the Contract Price immediately upon substantial completion of the services provided under this Contract. If the Buyer(s) fails to pay all amounts when due, the Buyer(s) agrees to pay a finance charge on the unpaid balance at the lesser of 1% per month or the maximum rate allowed by state and local law upon the earliest date allowed by state and local law. If the Buyer(s) fails to pay any amount due under this Contract, the Buyer(s) agrees to pay reasonable attorneys' fees and collection costs and expenses that Seller incurs in enforcing its rights to payment under this Contract. Seller hereby gives notice of its lien rights as a provider of goods and services to the improvement of Buyer(s)' real property and of its intention to assert those rights in the event Buyers fail to make payment for the goods and services furnished as required by this Contract.

**ARTICLE 3 - CANCELLATION.** BUYER(S) MAY CANCEL THIS CONTRACT BY GIVING SELLER WRITTEN NOTICE TO SELLER PRIOR TO MIDNIGHT OF THE THIRD BUSINESS DAY AFTER THE DATE OF THIS CONTRACT. If Buyer(s) cancels the Contract after the third business day, the Buyer(s) forfeits the entire Deposit. Furthermore, if this Contract provides for product specially made or the product has been delivered to the job site, the Buyer (s) agrees to pay the entire Contract Price and taxes attributable to the products as liquidated damages. In such event, Buyer(s) will be entitled to keep the

For more information regarding the finishing, maintenance, service and warranty of all Pella® products, visit the Pella® website at [www.pella.com](http://www.pella.com)

products.

**ARTICLE 4 - CHANGES.** Any notice or instruction from Buyer(s) received after execution of this Contract, which has the effect of changing the terms or scope of this Contract will be effective only upon an appropriate adjustment in the price and/or delivery date, and acceptance of the change by Seller in writing. Deletion of specific Goods shall be subject to the terms of the Cancellation provision of these Terms and Conditions.

**ARTICLE 5 - ACCEPTANCE OF WORK.** All work performed and materials supplied under this Contract shall be deemed in full compliance unless Seller is notified by Buyer(s) in writing to the contrary within five (5) days following substantial completion of installation.

**ARTICLE 6 - TIME FOR COMPLETION.** The work described under the terms of this Contract shall begin on or about the date indicated. Seller shall provide Buyer(s) with at least seventy-two (72) hours notice of the commencement of work on the Project. Seller shall make reasonable effort to complete the Project in a timely manner but there is no guarantee that shipment and installation will occur on the proposed date. **Seller, installer and Pella shall not be liable for any direct, indirect or consequential damage or loss caused by delay in shipment or delay in installation for any reason.**

**ARTICLE 7 - PROBLEMATIC SITE CONDITIONS.** If Seller is aware of conditions that make installation difficult, inefficient, or otherwise compromise the performance of the Products, including such conditions as water infiltration, mold, damaged or rotted framing or structural members, termites, wiring, or plumbing that must be moved, construction defects, lead paint, or asbestos, Seller shall have no obligation under this agreement to repair such conditions, but Seller may notify Buyer(s) of such conditions and the Contract Price shall be amended for any cost increases resulting from such conditions. If, in Seller's opinion, site conditions render performance hazardous or impracticable, it shall so notify Buyer(s) and the Contract may be terminated pursuant to Article 8 of this Contract. Seller may become aware of such conditions but is not responsible for discovering such conditions, determining the extent of such conditions, repairing such conditions or notifying Buyer(s) of such conditions.

**ARTICLE 8 - SELLER'S TERMINATION.** Seller, in its sole discretion, may terminate this Contract if the work is stopped for a period of thirty (30) consecutive days through no fault of Seller; or for conditions described in Article 7 above or if Buyer(s) defaults on any of its obligations contained in this Contract and does not cure said defaults within a reasonable period of time. In the event of such termination, Seller is entitled to recover from Buyer(s) such remedies as set forth under the cancellation provision (Article 3) contained in this Contract and any sums owed under the Contract, including the recovery of reasonable attorneys' fees incurred in the exercise of Seller's rights under this Contract.

**ARTICLE 9 - WARRANTY AND LIMITATIONS.** Seller warrants the installation services only as set forth in the Seller's Installation Limited Warranty and Service Agreement, which is made a part of this Contract. The Seller's Installation Limited Warranty and Service Agreement, is available from Seller upon request and may (but need not) be attached hereto or enclosed herewith. All product warranties for products manufactured by Pella or others are direct from Pella or others, respectively. Seller also agrees to service the Pella products purchased by Buyer for an 8-year period starting from the date of the expiration of the Installation Limited Warranty pursuant to the conditions and limitations set forth in the Service Agreement, which is made a part of this Contract. Pella warrants its products only as set forth in Pella's separate product limited warranties, which are made a part of this Contract. The product limited warranties for Pella products are available from Pella upon request and at [pella.com/warranty](http://pella.com/warranty), and may (but need not) be attached hereto or enclosed herewith. Other manufacturer warranties can be obtained directly from such manufacturer. Certain Pella products contain a factory finish. If the products purchased by Buyer(s) contain a factory finish, this finishing will be warranted as part of Pella's Product Warranties. These warranties are available at [pella.com/warranty](http://pella.com/warranty). If the Buyer(s) elects finishing by the Seller, Seller warrants the finishing only as set forth in the separate 2-Year Finishing Warranty. The 2-Year Finishing Warranty is available from Seller upon request and may (but need not) be attached hereto or enclosed herewith. Where applicable, all terms and limitations of the 2-Year Finishing Warranty are made a part of this Contract as if expressly set forth herein. If finishing is not selected from the Seller or from the factory, Buyer(s) is responsible for finishing. **THERE ARE NO OTHER WARRANTIES, EXPRESS OR IMPLIED, INCLUDING BUT NOT LIMITED TO WARRANTIES OF MERCHANTABILITY OR FITNESS FOR A PARTICULAR PURPOSE. IN NO EVENT SHALL SELLER OR PELLA OR ITS SUBSIDIARIES BE LIABLE FOR ANY INDIRECT, SPECIAL, CONSEQUENTIAL, OR INCIDENTAL DAMAGES ARISING OUT OF OR RELATED TO THE PRODUCT OR WORK.**

**ARTICLE 10 - WAIVER OF SUBROGATION.** Buyer(s) waives all rights to recover against Seller any losses covered by Buyer(s)' property insurance and waives all rights of subrogation for losses to the extent covered by insurance.

**ARTICLE 11 - LIMITATION OF SUITS.** Any controversy or claim arising out of, or relating to, the sale and/or installation of Products must be commenced within one (1) year after the cause of action has accrued.

For more information regarding the finishing, maintenance, service and warranty of all Pella® products, visit the Pella® website at [www.pella.com](http://www.pella.com)

Customer: Lauren Taylor

Project Name: Lauren Taylor - All Impervia

Order Number: 742XPM002

Quote Number: 13417940

**ARTICLE 12 - SUBCONTRACTORS.** Seller may contract with subcontractors to perform some or all of the installation work. Buyer(s) authorizes Seller to utilize subcontractors for all or any portion of the work.

**ARTICLE 13 - MISCELLANEOUS PROVISIONS.** Seller offers this service and products, and Buyer(s) accepts them, subject to the foregoing conditions of sale and limitations of warranty and liability, which may be modified only by written contracts signed by a duly authorized representative of Seller. This Contract contains the entire understanding of the parties concerning the subject matter hereof and supersedes all previous understandings relating thereto, whether oral or written. If any one or more of the provisions of this Contract shall be held to be invalid, illegal, or unenforceable, the validity, legality, and enforceability of the remaining provisions of the Contract shall not be affected. Buyer(s) may not assign this Contract, in whole or in part, without prior written consent of Seller. This Contract shall be governed by and construed in accordance with the laws of the state where the Project is located.

The customer represents that they have reviewed the local building codes and ordinances as well as any homeowner and/or condominium association rules and restrictions and that the materials and products they are ordering and their intended use, comply with all local building codes and ordinances and homeowner and/or condominium association rules and restrictions. The customer also acknowledges that they have secured all the proper approvals from their homeowner association, condominium association and/or historical society prior to executing this purchase contract.

Customer: Lauren Taylor

Project Name: Lauren Taylor - All Impervia

Order Number: 742XPM002

Quote Number: 13417940

Project Checklist has been reviewed

X Lauren S. Taylor  
Customer Name (Please print)

X [Signature]  
Customer Signature

X 11/25/20  
Date

Credit Card Approval Signature

Paul Miller  
Pella Sales Rep Name (Please print)

[Signature]  
Pella Sales Rep Signature

11-25-20  
Date

<b>Order Totals</b>	
Taxable Subtotal	\$38,850.53
Sales Tax @ 0%	\$0.00
Non-taxable Subtotal	\$12,959.37
<b>Total</b>	<b>\$51,809.90</b>
Deposit Received	\$0.00
<b>Amount Due</b>	<b>\$51,809.90</b>

For more information regarding the finishing, maintenance, service and warranty of all Pella® products, visit the Pella® website at [www.pella.com](http://www.pella.com)

Printed on 11/23/2020

Contract - Detailed



# Pella Windows & Doors Inc.

1920 N. Opdyke Ct. • Auburn Hills, MI 48326  
248-292-5000 • Fax 248-292-5001  
Builders License # 21021819

## SALES & INSTALLATION AGREEMENT CHANGE ORDER

### CUSTOMER INFORMATION

Name: Lauren Taylor  
Address: 19605 Stratford  
City: Detroit State: MI Zip: 48221  
Home Phone: 703-407-1506 Work Phone: \_\_\_\_\_  
Other: \_\_\_\_\_ Fax: \_\_\_\_\_  
Original Order #: 742 XPM002 Change Order #: 742 XPM002-2

In accordance with the terms of this Agreement the following changes are approved:

LINES 25 - 140 REMOVE GRILLS BETWEEN GLASS

Anticipated Project Start Date: 3-15-2021 Anticipated Completion Date: 3-15-2021

<b>COST ADJUSTMENTS</b> (If none, Write "None")	<u>\$2,162</u>	
Original Agreement Total Cost:	\$ <u>51,810</u>	
Adjustments From Prior Change Order(s):	\$ <u>1,050</u>	
Adjustments For This Change Order:	\$ <u>2,162</u>	
New Sales & Installation Agreement Total cost:	\$ <u>48,598</u>	
Amount Paid to Date:	\$ ( <u>25,905</u> )	To be charged to Wells Fargo
<b>Balance Due:</b>	\$ <u>\$22,693</u>	

The original Sales and Installation Agreement dated 11-25-20, as hereby amended, shall remain in full force and effect.

Kathleen McMoran  
Customer Signature

1-29-21  
Date

[Signature]  
Pella Windows & Doors Inc.

PAUL MILLER 2-3-21  
Printed Name (Date)

ORIGINAL