

Detroit Historic Commission  
2 Woodward Ave. Suite 808  
Detroit, MI. 48226

Project Review Request

RE: 14597 Artesian

EPLANS Permit Number: BLD2020-03402

To whom it may concern,

Italy American Construction proposes to build a new detached garage at 14597 Artesian. There currently is no garage located on this property, but other houses on this street have garages. The homeowner Miss Nicole Stowers would also like us to replace her existing ribbon driveway with a new full driveway.

There are pictures below of the house and backyard where we plan on building the new garage along with website links to materials that will be used for building the new garage. However, first here is the detailed scope of work:

- Install new 4" x 24" poured concrete ratwalls.
- Install new concrete 20' x 20' garage floor.
- Install new concrete driveway from (but not including) city walk to new garage.
- Build new 20' x 20' detached wood frame garage.
- Install 16' x 7' overhead short panel garage door in the color Sandtone.
- Overhead garage door includes ½ H.P. Door Opener with 2 remotes.
- Install 36" x 80" Panel stell service door.

SHINGLES:

Company: Certainteed

Style: Landmark

Color: Burnt Sienna

[Certainteed - Roofing Website](#)

SIDING:

Company: Certainteed

Style: American Legend – Dutchlap

Color: Herringbone

Trim Color: Herringbone

[Certainteed - Siding Website](#)

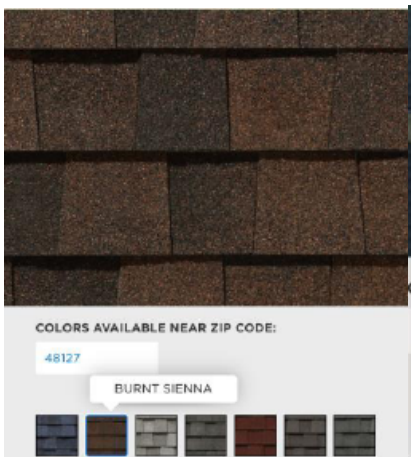
GARAGE DOOR:

Company: Amaar

Style: Startford

Color: Sandtone

[Amarr - Garage Door Website](#)













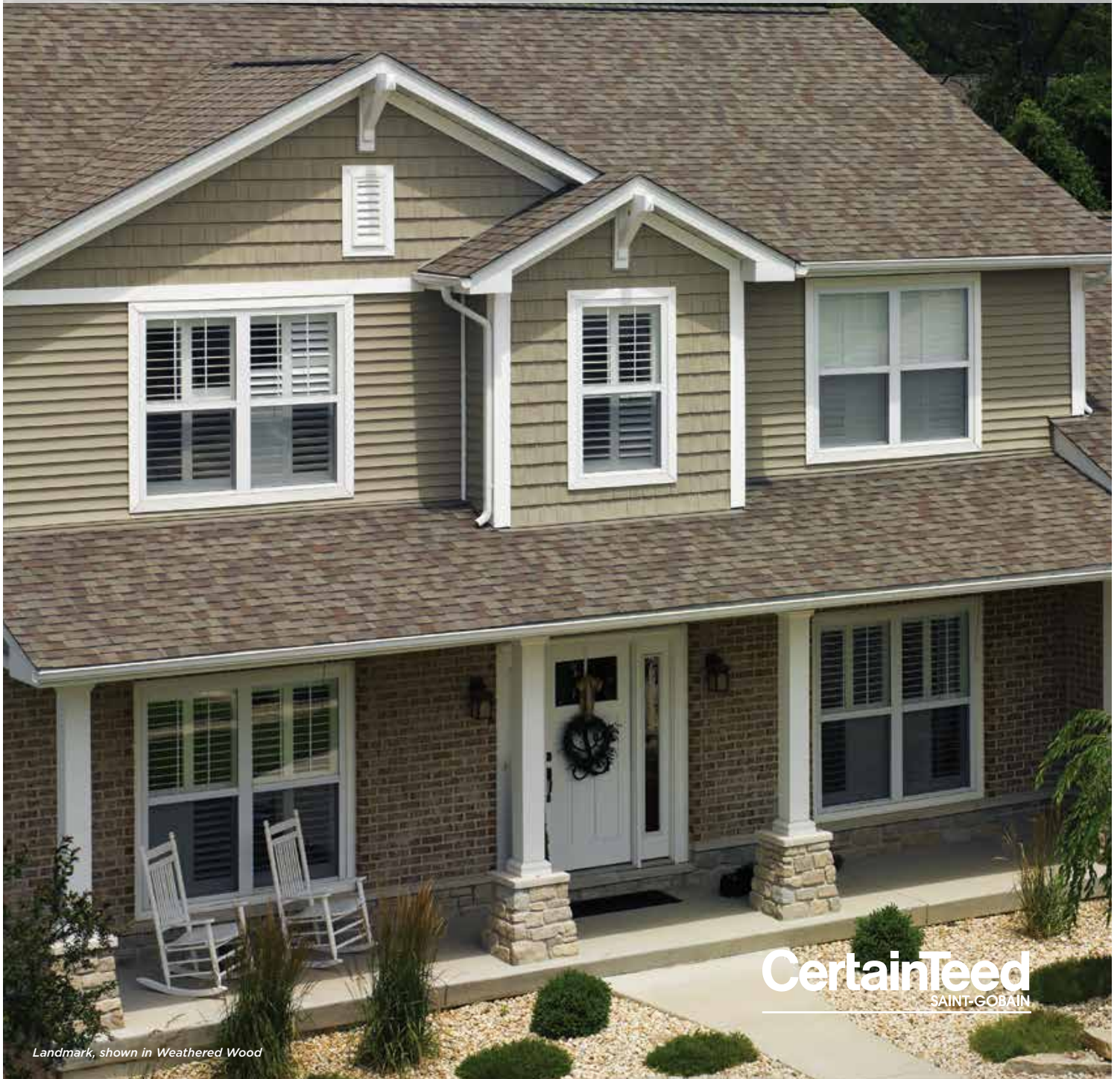






# LANDMARK® SERIES

Luxury and Designer Roofing Shingles



**CertainTeed**  
SAINT-GOBAIN

*Landmark, shown in Weathered Wood*



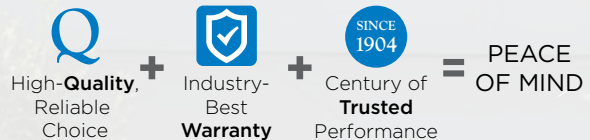
Landmark, shown in Birchwood

# Trust Your Home to Landmark®

Few things in this world are as precious as the place that you call home. It is much more than just a house. It's the foundation from which you build your life. That's why having a roof that gives your home long-lasting curb appeal and protection from the elements is so important. At CertainTeed, our benchmark for success is our customers' total peace of mind. And we wouldn't have it any other way.

Our dedication to making the highest-quality roofing systems continues to earn the respect of top building professionals. And our product portfolio offers the widest variety of design and color options in the industry. It's no wonder that more than a million homeowners across North America choose CertainTeed each year.

And the job doesn't stop once the roof goes on. Every CertainTeed product is backed by our industry-leading manufacturer's warranty, allowing you to rest confidently and comfortably for years to come.





Landmark, shown in Moire Black

# NAILTrak<sup>®</sup> Shingle Technology

## The bond that holds it together.

For more than a decade, NailTrak has improved shingle installation by providing a nailing area three times wider than that of a typical laminate shingle. This increases efficiency and accuracy in installation, providing homeowners greater peace of mind. Landmark<sup>®</sup> shingles also feature our specially-formulated Quadra-Bond<sup>®</sup> adhesive, providing industry-leading resistance to delamination. Together, our NailTrak and Quadra-Bond technologies deliver the strength and durability that allow your roof to stand the test of time.

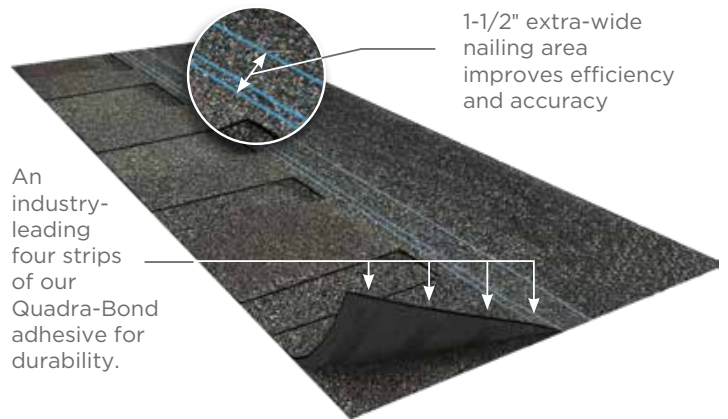


Diagram for illustrative purposes only.

# STREAKFighter<sup>®</sup> Algae-Resistant Shingle Technology

## The ultimate in stain protection.

Those streaks you see on other roofs in your neighborhood? That's algae, and it's a common eyesore on roofing throughout North America. CertainTeed's StreakFighter technology uses the power of science to repel algae before it can take hold and spread. StreakFighter's granular blend includes naturally algae-resistant copper, helping your roof maintain its curb appeal and look beautiful for years to come.

### Granule with StreakFighter Technology

- Ceramic coating
- Copper layer
- Mineral core

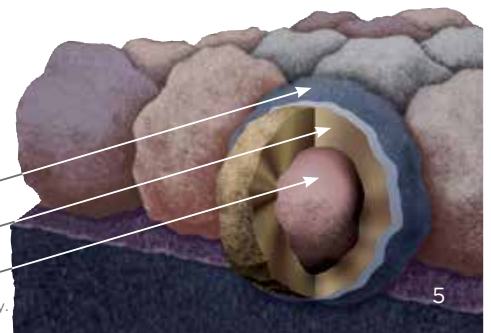


Diagram for illustrative purposes only.

# The Trusted Classic

## LANDMARK®

Owning a Landmark roof brings peace of mind. Landmark's dual-layered construction and exceptional durability provide long-lasting protection for your home.

- Dual-layered for extra dimensionality and protection from the elements
- Offers the widest array of colors in the industry
- Independently certified as meeting the highest quality standards for roofing



*Silver Birch*

*Landmark, shown in Silver Birch*

See next page for full color palette.

# LANDMARK® COLOR PALETTE



Silver Birch  
CRRP Product ID 0668-0072



Granite Gray



Driftwood



Moire Black



Mountain Timber



Burnt Sienna

# Strength with Style

## LANDMARK®

- Dual-layer durability
- Industry-best lifetime limited warranty
- 10-year StreakFighter® algae-resistance warranty



## LANDMARK® PRO

Architect 80

- Dual-layer, high performance
- Max Def color palette
- Industry-best lifetime limited warranty
- 15-year StreakFighter® algae-resistance warranty



## LANDMARK® PREMIUM

- Dual-layer, high performance
- Max Def color palette
- Industry-best lifetime limited warranty
- 15-year StreakFighter® algae-resistance warranty



## LANDMARK® TL

- Triple-layer, high performance
- Rustic appearance of hand-split wood shakes
- Industry-best lifetime limited warranty
- 15-year StreakFighter® algae-resistance warranty



## LANDMARK SERIES

### SPECIFICATIONS

- Two-piece (Landmark, Landmark Pro and Landmark Premium) and three-piece (Landmark TL) laminated fiberglass-based construction
- Classic shades and dimensional appearance of natural wood or slate

*For U.S. building code compliance, see product specification sheets.*

CertainTeed products are tested to ensure the highest quality and comply with the following industry standards:

#### Fire Resistance:

- UL Class A
- UL certified to meet ASTM D3018 Type 1

#### Wind Resistance:

- UL certified to meet ASTM D3018 Type 1
- ASTM D3161 Class F

#### Tear Resistance:

- UL certified to meet ASTM D3462
- CSA standard A123.5

#### Wind Driven Rain Resistance:

- Miami-Dade Product Control Acceptance: Please reference [www.certainteed.com](http://www.certainteed.com) to determine approved products by manufacturing location.

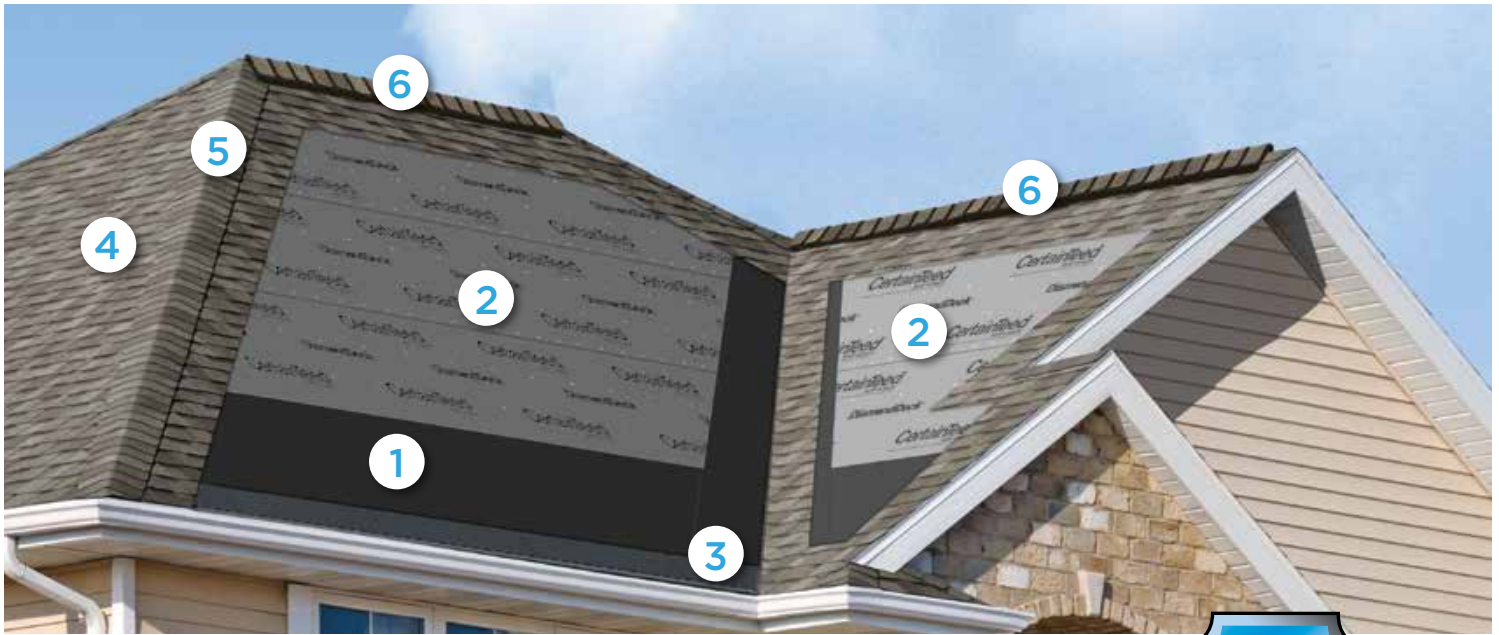
#### Quality Standards:

- ICC-ES-ESR-1389 & ESR-3537

### WARRANTY

- Lifetime limited transferable warranty against manufacturing defects on residential applications
- 50-year limited transferable warranty against manufacturing defects on group-owned or commercial applications (Landmark PRO, Landmark Premium and Landmark TL)
- StreakFighter® algae-resistance warranty (10-year – Landmark, 15-year – Landmark PRO, Landmark Premium and Landmark TL)
- 10-year SureStart™ protection
- 15-year 110 mph wind-resistance warranty
- Wind warranty upgrade to 130 mph available. CertainTeed starter and CertainTeed hip and ridge required

*See actual warranty for specific details and limitations.*



# Integrity Roof System™

A COMPLETE APPROACH TO LONG LASTING BEAUTY AND PERFORMANCE



With as much care as you take in selecting the right contractor, choosing the right roof system is equally as important. A CertainTeed Integrity Roof System combines key elements that help ensure you have a well-built roof for long-lasting performance.

## 1. Waterproofing Underlayment

The first step in your defense against the elements. Self-adhering underlayment is installed at vulnerable areas of your roof to help prevent leaks from wind-driven rain and ice dams.

## 2. Water-Resistant Underlayment

Provides a protective layer over the roof deck and acts as a secondary barrier against leaks.

## 3. Starter Shingles

Starter Shingles are the first course of shingles that are installed and designed to work in tandem with the roof shingles above for optimal shingle sealing and performance.

## 4. Shingles

Choose from a variety of Good-Better-Best styles to complement any roof design and fit your budget.

## 5. Hip & Ridge Caps

Available in numerous profiles, these accessories are used on the roof's hip and ridge lines for a distinctive finishing touch to your new roof.

## 6. Ventilation

A roof that breathes is shown to perform better and last longer. Ridge Vents, in combination with Intake Vents, allow air to flow on the underside of your roof deck, keeping the attic cooler in the summer and drier in the winter.

learn more at:

[certainteed.com/roofing](http://certainteed.com/roofing)

Landmark® Series  
available in  
areas shown



**CertainTeed**

CEILINGS • DECKING • FENCE • GYPSUM • INSULATION • RAILING • ROOFING • SIDING • TRIM

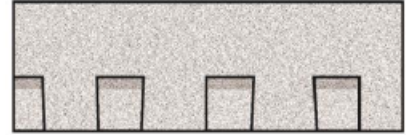
20 Moores Road Malvern, PA 19355 Professional: 800-233-8990 Consumer: 800-782-8777 [certainteed.com](http://certainteed.com)

© 01/20 CertainTeed, Printed in the USA, Code No. 20-20-1774

## Landmark®, Landmark® Premium, Landmark® Pro Shingles, Landmark® Pro/Architect 80 (NW Region Only) Shingles

### PRODUCT INFORMATION

Landmark shingles reflect the same high manufacturing standards and superior warranty protection as the rest of CertainTeed's line of roofing products. Landmark Premium (and Algae Resistant-AR), Landmark PRO (and AR) and Landmark (and AR) are built with the industry's toughest fiber glass mat base, and their strict dimensional tolerance assures consistency. Complex granule color blends and subtle shadow lines produce a distinctive color selection. Landmark is produced with the unique NailTrak® nailing feature. **Please see the installation instruction section below for important information regarding NailTrak.**



In the Northwest Region Landmark PRO (AR) is double-branded as Landmark PRO/Architect 80 (AR).

Landmark algae-resistant (AR) shingles are algae-resistant and help protect against dark or black discoloration, sometimes called staining or streaking, caused by blue-green algae. AR shingles are not available in all regions.

**Colors:** Please refer to the product brochure or CertainTeed website for the colors available in your region.

**Limitations:** Use on roofs with slopes greater than 2" per foot. Low-slope applications (2:12 to < 4:12) require additional underlayment. In areas where icing along eaves can cause the back-up of water, apply CertainTeed WinterGuard® Waterproofing Shingle Underlayment, or its equivalent, according to application instructions provided with the product and on the shingle package.

**Product Composition:** Landmark Series shingles are composed of a fiber glass mat base. Ceramic-coated mineral granules are tightly embedded in carefully refined, water-resistant asphalt. Two pieces of the shingle are firmly laminated together in a special, tough asphaltic cement. All Landmark shingles have self-sealing adhesive strips.

### Applicable Standards

ASTM D3018 Type I

ASTM D3462

ASTM E108 Class A Fire Resistance

ASTM D3161 Class F Wind Resistance

ASTM D7158 Class H Wind Resistance

UL 790 Class A Fire Resistance

ICC-ES ESR-1389 and ESR-3537

CSA Standard A123.5 (Regional)

Miami-Dade Product Control Approved

Florida Product Approval # FL5444

Meets TDI Windstorm Requirements

### Technical Data:

	<b>Landmark (and AR)</b>	<b>Landmark PRO* (and AR)</b>	<b>Landmark Premium (and AR)</b>
Weight/Square (approx.)	219 to 238 lb **	240 to 267 lb **	300 lb
Dimensions (overall)	13 1/4" x 38 3/4"	13 1/4" x 38 3/4"	13 1/4" x 38 3/4"
Shingles/Square (approx.)	66	66	66
Weather Exposure	5 5/8"	5 5/8"	5 5/8"

\*Includes Landmark PRO AR/Architect 80

\*\*Dependent on manufacturing location



## **INSTALLATION**

Detailed installation instructions are supplied on each bundle of Landmark shingles and must be followed. Separate application sheets may also be obtained from CertainTeed.

**Hips and Ridges:** For capping hip and ridge apply CertainTeed Shadow Ridge®, Cedar Crest® or Mountain Ridge® shingles of a like color.

## **MAINTENANCE**

These shingles do not require maintenance when installed according to manufacturer's application instructions. However, to protect the investment, any roof should be routinely inspected at least once a year. Older roofs should be looked at more frequently.

## **WARRANTY**

Landmark Premium (and AR), Landmark PRO/Architect 80 AR, Landmark PRO (and AR), and Landmark (and AR) shingles carry a lifetime limited, transferable warranty to the consumer against manufacturing defects when applied to stated CertainTeed application instructions for this product. In addition, Landmark Premium (and AR), Landmark PRO (and AR), Landmark PRO/Architect 80 AR, and Landmark (and AR) carry 10-years of SureStart™ Protection. Landmark AR shingles carry a 10-year algae resistance warranty. Landmark Premium AR, Landmark PRO AR, and Landmark PRO/Architect 80 AR shingles carry a 15-year algae resistance warranty. For specific warranty details and limitations, refer to the warranty itself (available from the local supplier, roofing contractor or on-line at [www.certainteed.com](http://www.certainteed.com)).

## **FOR MORE INFORMATION**

Sales Support Group: 800-233-8990

Web site: [www.certainteed.com](http://www.certainteed.com)

See us at our on-line specification writing tool, CertaSpec®, at [www.certainteed.com/certaspec](http://www.certainteed.com/certaspec).

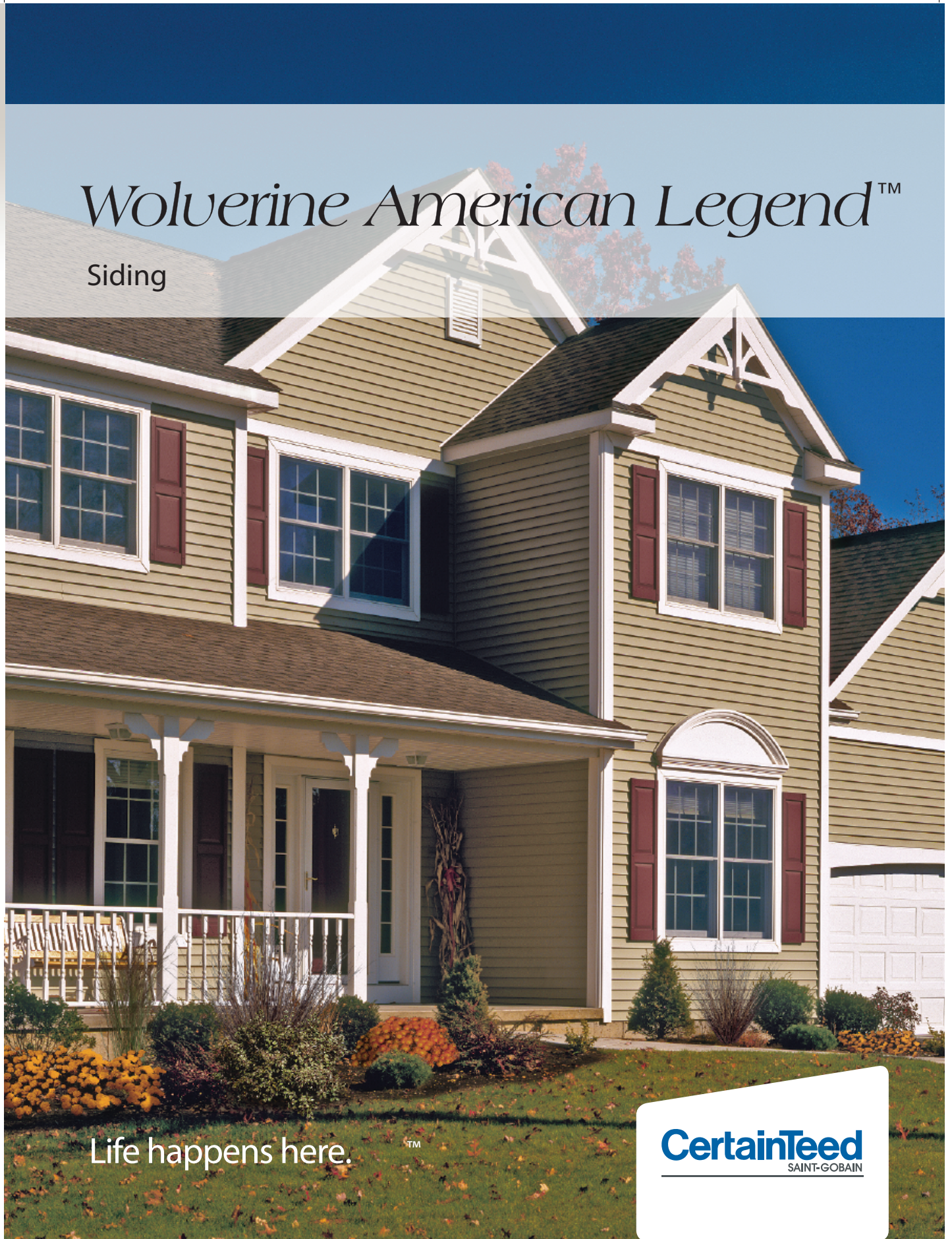
**CertainTeed**  
20 Moores Road  
Malvern, PA 19355

© 01/20 CertainTeed

**CertainTeed**  
SAINT-GOBAIN

# *Wolverine American Legend™*

Siding



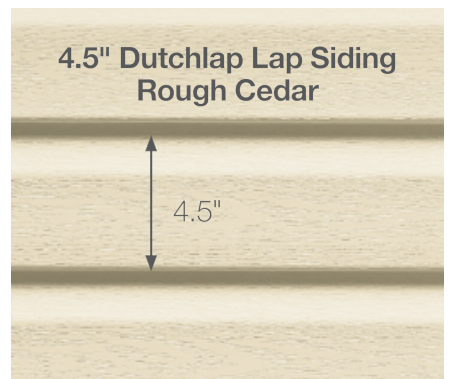
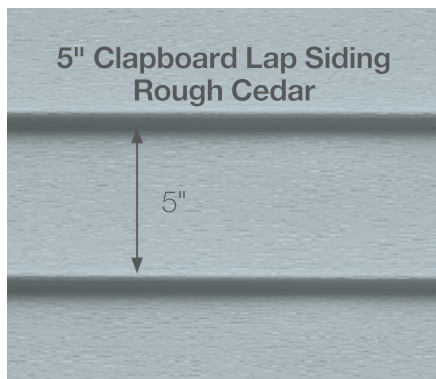
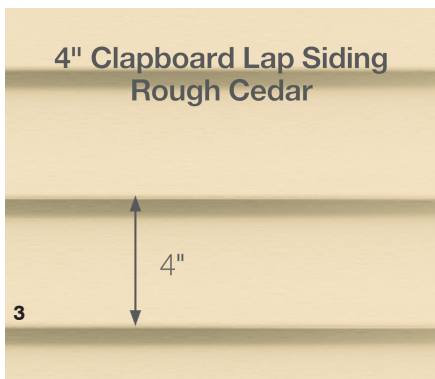
Life happens here.™

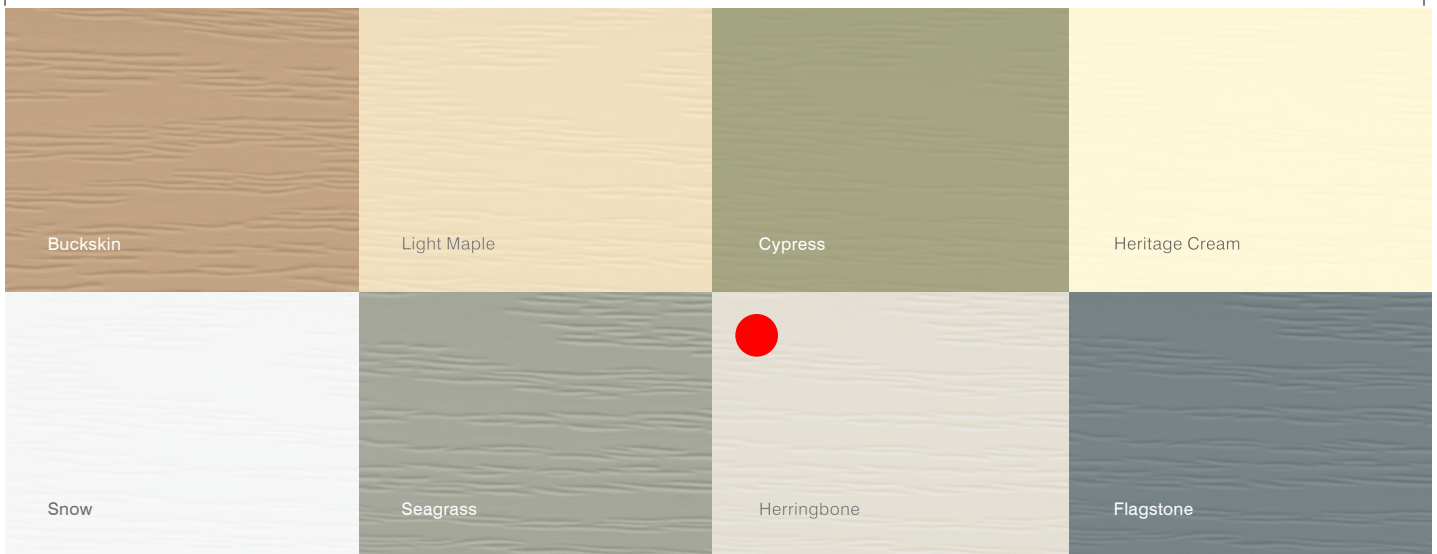
**CertainTeed**  
SAINT-GOBAIN



## 3 Styles. Great features.

Wolverine American Legend consists of traditional styles with European roots: Clapboard and Dutchlap. The Clapboard style is the most traditional and found in all parts of the United States. The Dutchlap style provides strong shadow lines and is highly popular in the Mid-Atlantic region.





# 21 Long-Lasting Colors



PermaColor™ system assures color performance, resistance and durability. Wolverine American Legend siding has a special blend of resin, superior micro-ingredients and state-of-art pigment chemistry.



Spruce



**ITALY AMERICAN CONSTRUCTION CO., INC.**

RESIDENTIAL & COMMERCIAL

COMPLETE MODERNIZATION & CUSTOM CABINET BUILDERS

JOB #

EG2005

8401 N. Telegraph

140 W. Highland Rd.  
Highland, MI 48037

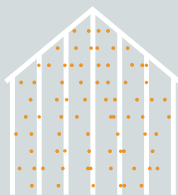
# Wolverine American Legend is better...



Siding: Wolverine American Legend Double 4" Clapboard in buckskin.  
Trim: Vinyl Carpentry® and Restoration Millwork®.

## ...for safety.

STUDfinder™ is an installation system with letters on the Wolverine American Legend panel nail hem to ensure proper nailing to wood studs, to protect you from unwanted dangers such as damaged pipes or wires, or exposed nails.



Without STUDfinder



With STUDfinder



## ...for protection.

When installed with Wolverine American Legend siding, CertaWrap™ Weather Resistant Barrier is the added layer of protection against air and moisture damage.

## ...for peace of mind.



### Warranty

Wolverine American Legend has a lifetime limited warranty.



### Trusted Brand

CertaTeed siding is the brand preferred by building professionals and homeowners, from surveys conducted by national trade magazines. CertaTeed is an industry leader for over 100 years.



### Sustainable

CertaTeed vinyl siding offers significantly lower environmental impact than other cladding options.<sup>†</sup>

<sup>†</sup>Based on life cycle assessment studies conducted through the National Institute of Standards and Technology (NIST)

## Wolverine American Legend™

### Vinyl Siding

**General Description:** Wolverine American Legend™ Siding provides the look of wood siding, but does not require the upkeep common to wood. Wolverine American Legend Siding is available in a selection of profiles and finishes that offer the industry’s best real wood replication. It is appropriate for use in new construction for single family homes, multi-housing projects and light commercial developments. Wolverine American Legend is also an ideal product for remodeling.

**Styles:**

Profile	Finish	Panel Projection (Nominal)	Wall Thickness (Nominal)	Lock Design	Colors	Accessory Pocket
Double 4” Clapboard	Woodgrain	9/16”	.042”	GripLock™ post-formed positive lock	21	½”, 5/8”, 3/4”
Double 5” Clapboard	Woodgrain	9/16”	.042”	GripLock™ post-formed positive lock	21	½”, 5/8”, 3/4”
Double 4½” Dutchlap	Woodgrain	9/16”	.042”	GripLock™ post-formed positive lock	18	½”, 5/8”, 3/4”

**Colors:** Wolverine American Legend siding profiles are available in the industry’s widest selection of colors. All colors are Spectrophotometer controlled and utilize exclusive PermaColor™ color science.

Colonial White (01)	Herringbone (04)	Snow (31)	Granite Gray ( 42)	Charcoal Gray (46)	Spruce (16)
Autumn Yellow (10)	Light Maple (55)	Sterling Gray (33)	Natural Clay (60)	Flagstone (97)	
Desert Tan ( 7)	Savannah Wicker (59)	Buckskin (41)	Oxford Blue (32)	Forest (47)	
Heritage Cream (11)	Seagrass (30)	Cypress (37)	Autumn Red (23)	Hearthstone (19)	

**STUDfinder™:** The patented STUDfinder Installation System combines precisely engineered nail slot locations with graphics. Nail slots are positioned 16" on center to allow for alignment with studs. STUDfinder graphics centered at each slot provide a quick and easy guide to help locate studs.

**Accessories:** CertainTeed manufactures a wide range of siding accessories that are compatible with Wolverine American Legend siding styles and colors. Accessory products include installation components, soffit, window and door trim, corner lineals, corner systems and decorative moldings.

**Composition:** Wolverine American Legend siding products are produced using PVC resin.

**Technical Data:** Wolverine American Legend siding is in compliance with ASTM specification for Rigid Polyvinyl Chloride (PVC) Siding D 3679, and the requirements of section R703.11 of the International Residential Code, and section 1404.14 of the International Building Code. American Legend siding meets or exceeds the properties noted in Table 1.

**Table 1:**

ASTM E 84	Meets Class A flame spread requirements as tested according to ASTM E84.
ASTM D 635	Material is self-extinguishing with no measurable extent of burn when tested in accordance with this specification.
NFPA 268	Radiant Heat Test - Ignition Resistance of Exterior Walls - Conclusion that Wolverine met the conditions for allowable use as specified in section 1406 of the International Building Code.

**Important Fire Safety Information:** When rigid vinyl siding is exposed to significant heat or flame, the vinyl will soften, sag, melt or burn, and may thereby expose material underneath. Care must be exercised when selecting underlayment materials because many underlayment materials are made from organic materials that are combustible. You should ascertain the fire properties of underlayment materials prior to installation. All materials should be installed in accordance with local, state and federal Building Code and fire regulations.

**Wind Load Testing:** Wolverine American Legend siding has been tested per ASTM D 5206 standard test method for wind load resistance to withstand negative wind load pressures and their mph equivalents as shown in the chart below. All products exceed industry standards for wind load performance. Check with your local building inspector for wind load requirements in your area for the type of structure you are building

Table 2

Product	Fastener Spacing	2015/2018 IBC/IRC			2021 IBC/IRC		
		Standard Design Pressure Rating	Maximum Windspeed (mph)		Standard Design Pressure Rating	Maximum Windspeed (mph)	
			ASD	ULT		ASD	ULT
Double 4" Clapboard	Nails 16" o.c.	71.9	173	223	45.1	137	177
Double 4-1/4" Dutchlap	Nails 16" o.c.	77.2	179	231	48.9	143	187
Double 5" Clapboard	Nails 16" o.c.	55.6	152	196	40.0	129	166

\* Windload calculations based on ASTM D3679, ASCE 7-10, 30ft High, Exposure B

**Documents:** Wolverine Vinyl Siding meets the requirements of one or more of the following specifications.

Texas Department of Insurance Product Evaluation EC-11

Conforms to ASTM Specification D3679

ICC-ES Evaluation Report ESR-1066

Florida BCIS Approval FL1573

For specific product evaluation/approval information, call 800-233-8990.

**Installation:** Prior to commencing work, verify governing dimensions of building, examine, clean and repair, if necessary, any adjoining work on which the siding is in any way dependent for its proper installation. Sheathing materials must have an acceptable working surface. Siding, soffit and accessories shall be installed in accordance with the latest editions of CertainTeed installation manuals on siding and soffit. Installation manuals are available from CertainTeed and its distributors.

**Warranty:** CertainTeed supports Wolverine American Legend siding products with a Lifetime Limited Warranty including PermaColor Lifetime Fade Protection to the original homeowner. The warranty is transferable if the home is sold.

**Technical Services:** CertainTeed maintains an Architectural Services staff to assist building professionals with questions regarding CertainTeed siding products. Call 800-233-8990 for samples and answers to technical or installation questions.

**Sample Short Form Specification:** Siding as shown on drawings or specified herein shall be Wolverine American Legend Vinyl Siding as manufactured by CertainTeed Siding, Malvern, PA. Installation shall be in accordance with manufacturer's instructions.

## BUILD YOUR DOOR

- Make selections in order shown - Design, Window, Color and Construction.
- Available options may vary based on design, color and construction selections.
- Once all selections are complete save your door design to your favorites to share with others.

### 1 Select door design: Short Panel

Showing 1 of 4



### 2 Select window: Short Panel

Showing 1 of 5 out of 21



With **Mosaic Window Options** you decide the number and location of windows to create the door design you want.

See [Mosaic Windows Options](#) page or [Style Guide](#) for more information and design ideas. Mosaic Window Options not shown in Door Summary or Door Builder image.

### 3 Select color: Sandtone

Showing 1 of 5 out of 9



[Need Some Help?](#)



## DOOR SUMMARY

**Door Design:** Short Panel

**Windows:** Short Panel

**Color:** Sandtone

**Construction\*:** Stratford ST1000

**Decorative Hardware:** Amarr Lock

\*Not shown in image.

[Find A Dealer](#)

[Save to Favorites](#)







# ITALY AMERICAN CONSTRUCTION CO., INC.

JOB #

EG2005

8401 N. Telegraph  
Dearborn Heights, MI 48127  
(313) 278-7500  
(313) 278-7501 Fax  
1-877-98-ITALY Toll-Free  
www.italyamerican.com

RESIDENTIAL & COMMERCIAL  
COMPLETE MODERNIZATION & CUSTOM GARAGE BUILDERS

140 W. Highland Rd.  
Highland, MI 48357  
1-877-98-ITALY  
LICENSED, BONDED & INSURED  
STATE LICENSE NO. 48313

## SPECIFICATIONS AND CONTRACT

Name MISS. NICOLE STOWERS DAD Home Phone (313) 706-1943 W/C Alt. Phone (313) 471-6076  
Address 14597 ARTESIAN Side of Street WEST  
City DETROIT County WAYNE Zip 48223  
Directions N. SCHOOLCRAFT + W. SOUTHFIELD

This Agreement made this 13th day of AUG, 2020 by and between MISS. NICOLE STOWERS of 14597 ARTESIAN hereinafter called Owner, and Italy American Construction Co., Inc. of 8401 N. Telegraph Rd., Dearborn Heights, MI 48127, or 140 W. Highland Rd., Highland, MI 48357, hereinafter called Contractor. Owner and Contractor for the considerations hereinafter named agree as follows: Unless otherwise specified herein the Contractor shall furnish all of the materials and perform all of the work hereinafter set forth.

PLACE EXCESSIVE SOD+DIRT ON RIGHT SIDE OF GARAGE IN YARD.  
BREAKOUT+HAUL EXISTING RIBBON DRIVEWAY. INSTALL NEW CONC. PER PLAN USING 6BAG MIX ON A COMPACTED BASE  
A 12" PATWALLS AROUND PERIMETER OF FLOOR/JAIL CONTROL JOINTS, BUILD

### CONCRETE / MASONRY / SITE PREP

\*Removing thicker and/or reinforced concrete is an additional cost to contract price\*

Miss Dig NO 6" Flatwork Nominal NO  
Demo NO Base COMPACTED  
Concrete Breakout 400sq ft Ratwall 4' x 2'  
Asphalt Removal NO Footing NO  
Sod/Dirt Removal YES Build-up YES YARD SIDE 10'  
Garage Floor YES Brick/Block Work NO  
Driveway/Apron/Patio/Approach YES Wire/Fiber Mesh NO  
Sidewalk NO Re-Rod NO Pin to existing NO  
4" Flatwork Nominal YES Fence/Gate NO Removal NO  
6 Bag Mix Nominal YES Conduit YES In Floor YES  
Bolts 6 @ 2' 1" FROM CORNER

### ELECTRICAL SPECIFICATIONS

\*If existing electrical service does not meet code, any extra cost will be added to original contract price\*

New Service NO Existing Service YES  
Move Meter NO Interior Wall Outlets 3  
Interior Lights 2 Single Switches 2 3 Way NO  
Coach Lights NO Flood Lights NO Exterior G.F.I. NO  
Door Opener Outlet YES Elec. Trench Filled YES

### SIDING SPECIFICATIONS

Type D-4'ORS' Color HERRINGBONE  
Trim ALUM. Color HERRINGBONE  
Soffit VINYL Perf VS Color HERRINGBONE  
Gutters NO Color NO  
Posts NO Railings NO

PAYMENT: I/We, the Owner(s) MISS. NICOLE STOWERS shall pay the Contractor for the performance of the Agreement, subject to additions and deductions provided therein as follows: TOTAL CONTRACT PRICE \$ \_\_\_\_\_

DOWN \$ \_\_\_\_\_ upon \_\_\_\_\_  
\$ \_\_\_\_\_ upon \_\_\_\_\_  
\$ \_\_\_\_\_ balance upon substantial completion of the work.

\*\*NOTE: Contract price pending City plan review and approval. Any changes could result in a change of total contract price.

**THE AGREEMENT:** This Agreement constitutes the entire understanding and agreement of the parties, and no other understanding, warranties, or representations, collateral or otherwise, shall be binding unless in writing and signed by both of the parties. Unless work and materials therefor are specified herein, the same is excluded and Contractor is not to perform or provide same. Contractor is not bound by any oral expression or representation by its agents purporting to act on its behalf, or by any commitment or arrangement not specified in this Agreement. All prior discussions, quotations and negotiations are merged on this Agreement.

**OWNER'S RIGHT TO CANCEL:** IF THIS AGREEMENT WAS SOLICITED AT YOUR RESIDENCE AND YOU DO NOT WANT THE GOODS OR SERVICES, YOU MAY CANCEL THIS AGREEMENT BY MAILING A NOTICE TO THE CONTRACTOR. THE NOTICE MUST SAY THAT YOU DO NOT WANT THE GOODS OR SERVICES AND MUST BE MAILED BEFORE MIDNIGHT ON THE THIRD BUSINESS DAY AFTER YOU SIGN THIS AGREEMENT. THE NOTICE MUST BE MAILED TO: ITALY AMERICAN CONSTRUCTION CO., INC., 8401 N. TELEGRAPH RD., DEARBORN HTS., MI 48127.

**CANCELLATION:** If Owner cancels this Contract at any time before Contractor begins work, except as expressly permitted by law, he agrees to pay Contractor an amount equal to its loss of profits forthwith as damages which the parties agree is fair and reasonable compensation, plus any costs actually expended by Contractor in connection with this Agreement.

**CONTRACT BECOMES EFFECTIVE:** This Agreement shall become binding and effective either: (a) When actual performance of work has been commenced; or (b) When this Agreement has been accepted by the Contractor at its office by a duly authorized officer. Contractor will deliver its acceptance to Owner or send notice of acceptance to Owner by regular mail. However actual receipt of such notice is waived by Owner.

**OWNER'S ACKNOWLEDGEMENTS:** Owner hereby acknowledges receipt of a duly executed duplicate copy of this Agreement at the time of its execution with all the blank spaces filled in to the extent applicable to this project.

By the execution of this Agreement on the day and year first above written Owner acknowledges that he has read this Agreement, including specifications and drawings, if any, included herein, before signing and hereby further acknowledges that he understands all covenants and conditions herein.

THE TERMS AND CONDITIONS ON THE REVERSE SIDE AND ALL SUBSEQUENT PAGES, INCLUDING ANY ATTACHED DRAWINGS, AND THEIR REVERSE CONSTITUTE A PART OF THIS AGREEMENT AND ARE SPECIFICALLY INCORPORATED HEREIN BY REFERENCE.

ACCEPTED (date) 8-13- 2020

ITALY AMERICAN CONSTRUCTION CO., INC.

By [Signature]  
Representative

[Signature]  
Purchaser

Contractor

Co-Purchaser

NO VERBAL AGREEMENTS RECOGNIZED



# ITALY AMERICAN CONSTRUCTION CO., INC.

JOB #

EG2005

8401 N. Telegraph  
Dearborn Heights, MI 48127  
(313) 278-7500  
(313) 278-7501 Fax  
1-877-98-ITALY Toll-Free  
www.italyamerican.com

RESIDENTIAL & COMMERCIAL  
COMPLETE MODERNIZATION & CUSTOM GARAGE BUILDERS

140 W. Highland Rd.  
Highland, MI 48357  
1-877-98-ITALY  
LICENSED, BONDED & INSURED  
STATE LICENSE NO. 48313

## SPECIFICATIONS AND CONTRACT

Name MISS. NICOLE STOWERS DAD JOHNNY Date 8-13-2020 Lot No. \_\_\_\_\_  
Address 14597 ARTESIAN Home Phone (313) 706-1943 Lot Size \_\_\_\_\_  
City DETROIT W/C Alt. Phone (483) 471-6076 Sub \_\_\_\_\_  
County WAYNE Side of Street WEST Liber. \_\_\_\_\_  
Zip 48223 Page \_\_\_\_\_  
Directions N. SCHOOLCRAFT + W. SOUTHFIELD Between Sts. \_\_\_\_\_

This Agreement made this 13th day of AUG, 2020 by and between MISS. NICOLE STOWERS of 14597 ARTESIAN hereinafter called Owner, and Italy American Construction Co., Inc. of 8401 N. Telegraph Rd., Dearborn Heights, MI 48127, or 140 W. Highland Rd., Highland, MI 48357, hereinafter called Contractor. Owner and Contractor for the considerations hereinafter named agree as follows: Unless otherwise specified herein the Contractor shall furnish all of the materials and perform all of the work hereinafter set forth.

PLACE EXCESSIVE SOD+DIRT ON RIGHT SIDE OF GARAGE IN YARD.  
BRKAWOUT+HAUL EXISTING RIBBON DRIVEWAY. INSTALL NEW  
CONC. PER PLAN USING 6BAG MIX ON A COMPACTED BASE  
A 42A" PATWAYS AROUND PERIMETER OF FLOOR/JIB CONTROL JOINTS, BUILD

### CONCRETE / MASONRY / SITE PREP

*\*Removing thicker and/or reinforced concrete is an additional cost to contract price\**

Miss Dig NO 6" Flatwork Nominal NO  
Demo NO Base COMPACTED  
Concrete Breakout 400# per Ratwall 4" x 2"  
Asphalt Removal NO Footing NO  
Sod/Dirt Removal YES Build-up YES YARDSIDE 10"  
Garage Floor YES Brick/Block Work NO  
Driveway/Apron/Patio/Approach YES Wire/Fiber Mesh NO  
Sidewalk NO Re-Rod NO Pin to existing NO  
4" Flatwork Nominal YES Fence/Gate NO Removal NO  
6 Bag Mix Nominal YES Conduit YES In Floor YES  
Bolts 6" x 1" FROM GARAGE

### STRUCTURAL SPECIFICATIONS

Size 20'x20' Style SAVOY  
Front O.H. 2' Roof Pitch \_\_\_\_\_  
Studs 7" - 16" O.C. Top Plate(s) DOUBLED  
Roof Sheathing 7/16" OSB Wall Sheathing 7/16" OSB Firewall YES (1)  
House Wrap YES Treated Bottom Plate YES 6" x 6" Cornice OPEN  
Metal Wind Braces YES Triple Corner Studs YES  
Truss \_\_\_\_\_ Rafters YES Collar Ties YES  
Cross Ties YES Hangers YES H Ties YES  
Reverse Ties 2-2"x4" Brick Front NO  
Overhead Door Size 16'x7' SHOOT PANEL 45' Corners NO  
Overhead Door Style SHOOT PANEL Color SANDSTONE  
Door Opener & Accessories 2HR W/ 2HS  
Service Door w/Lockset 36" PRE HUNG Deadbolt YES  
Window Size & Type NO

### ELECTRICAL SPECIFICATIONS

*\*If existing electrical service does not meet code, any extra cost will be added to original contract price\**

New Service NO Existing Service YES  
Move Meter NO Interior Wall Outlets 3  
Interior Lights 2 Single Switches 2 3 Way NO  
Coach Lights INSTALL Flood Lights NO Exterior G.F.I. NO  
Door Opener Outlet YES Elec. Trench Filled YES

### ROOFING SPECIFICATIONS

Color BURNT TENNA Clean-up YES  
Type LANDMARK Ice Guard NO  
Felt 15 ROOF DECK Vents 2-BROWN  
Drip Edge Color HERRINGBONE

### SIDING SPECIFICATIONS

Type D-4'ORS' Color HERRINGBONE  
Trim ALUM. Color HERRINGBONE  
Soffit VINYL Perf YES Color HERRINGBONE  
Gutters NO Color NO  
Posts NO Railings NO

### SPECIAL NOTES

GARAGE PER SPECS.

PAYMENT: I/We, the Owner(s) MISS. NICOLE STOWERS shall pay the Contractor for the performance of the Agreement, subject to additions and deductions provided therein as follows: TOTAL CONTRACT PRICE \$ \_\_\_\_\_ \*\*

DOWN \$ \_\_\_\_\_ upon \_\_\_\_\_  
\$ \_\_\_\_\_ upon \_\_\_\_\_  
\$ \_\_\_\_\_ balance upon substantial completion of the work.

\*\*NOTE: Contract price pending City plan review and approval. Any changes could result in a change of total contract price.

**THE AGREEMENT:** This Agreement constitutes the entire understanding and agreement of the parties, and no other understanding, warranties, or representations, collateral or otherwise, shall be binding unless in writing and signed by both of the parties. Unless work and materials therefor are specified herein, the same is excluded and Contractor is not to perform or provide same. Contractor is not bound by any oral expression or representation by its agents purporting to act on its behalf, or by any commitment or arrangement not specified in this Agreement. All prior discussions, quotations and negotiations are merged on this Agreement.

**OWNER'S RIGHT TO CANCEL:** IF THIS AGREEMENT WAS SOLICITED AT YOUR RESIDENCE AND YOU DO NOT WANT THE GOODS OR SERVICES, YOU MAY CANCEL THIS AGREEMENT BY MAILING A NOTICE TO THE CONTRACTOR. THE NOTICE MUST SAY THAT YOU DO NOT WANT THE GOODS OR SERVICES AND MUST BE MAILED BEFORE MIDNIGHT ON THE THIRD BUSINESS DAY AFTER YOU SIGN THIS AGREEMENT. THE NOTICE MUST BE MAILED TO: ITALY AMERICAN CONSTRUCTION CO., INC., 8401 N. TELEGRAPH RD., DEARBORN HTS., MI 48127.

**CANCELLATION:** If Owner cancels this Contract at any time before Contractor begins work, except as expressly permitted by law, he agrees to pay Contractor an amount equal to its loss of profits forthwith as damages which the parties agree is fair and reasonable compensation, plus any costs actually expended by Contractor in connection with this Agreement.

**CONTRACT BECOMES EFFECTIVE:** This Agreement shall become binding and effective either: (a) When actual performance of work has been commenced; or (b) When this Agreement has been accepted by the Contractor at its office by a duly authorized officer. Contractor will deliver its acceptance to Owner or send notice of acceptance to Owner by regular mail. However actual receipt of such notice is waived by Owner.

**OWNER'S ACKNOWLEDGEMENTS:** Owner hereby acknowledges receipt of a duly executed duplicate copy of this Agreement at the time of its execution with all the blank spaces filled in to the extent applicable to this project.

By the execution of this Agreement on the day and year first above written Owner acknowledges that he has read this Agreement, including specifications and drawings, if any, included herein, before signing and hereby further acknowledges that he understands all covenants and conditions herein.

THE TERMS AND CONDITIONS ON THE REVERSE SIDE AND ALL SUBSEQUENT PAGES, INCLUDING ANY ATTACHED DRAWINGS, AND THEIR REVERSE CONSTITUTE A PART OF THIS AGREEMENT AND ARE SPECIFICALLY INCORPORATED HEREIN BY REFERENCE.

ACCEPTED (date) 8-13- 2020

ITALY AMERICAN CONSTRUCTION CO., INC.

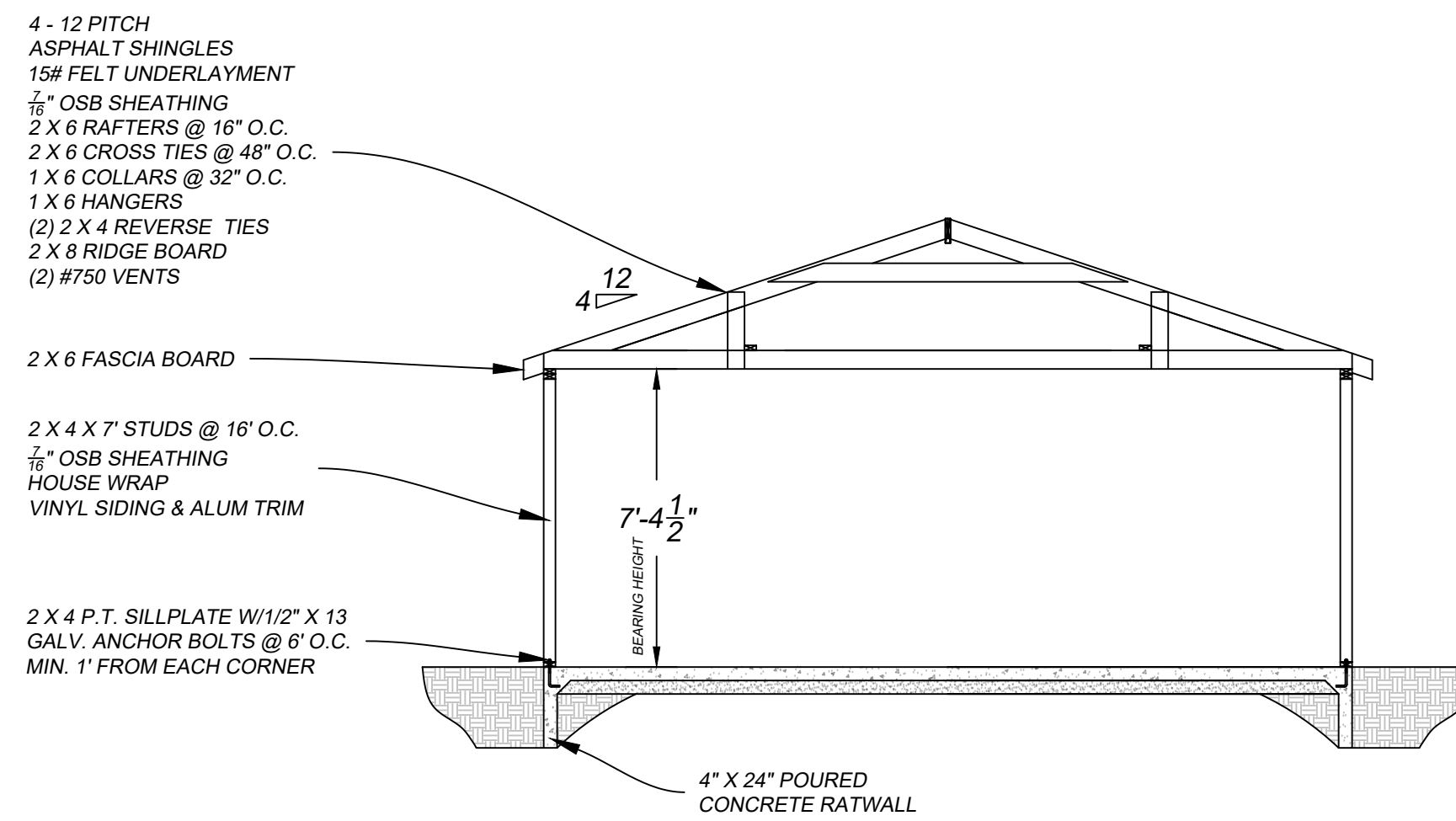
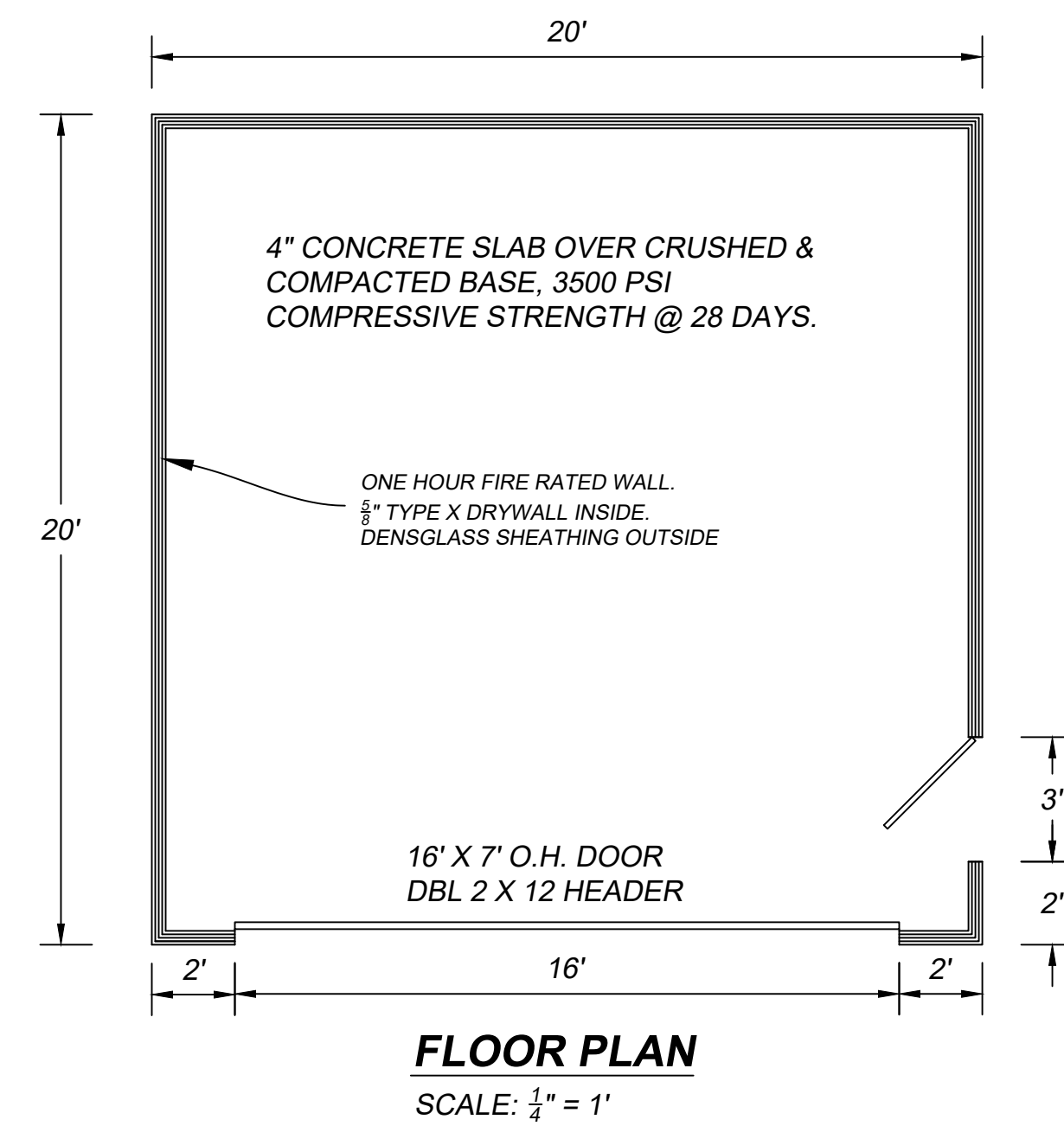
By [Signature]  
Representative

[Signature]  
Purchaser

Contractor

Co-Purchaser

NO VERBAL AGREEMENTS RECOGNIZED



**GENERAL NOTES**

- THESE PLANS ARE PROTECTED BY COPYRIGHT AND ARE NOT TO BE REPRODUCED WITHOUT THE EXPRESSED WRITTEN CONSENT OF THE AUTHOR
- APPLICABLE BUILDING CODES ARE AS FOLLOWS  
- MICHIGAN RESIDENTIAL BUILDING CODE 2015  
- CITY OF DETROIT BUILDING CODE  
- CITY OF DETROIT ZONING CODE
- PRIOR TO THE START OF CONSTRUCTION, THE LICENSED CONTRACTOR SHALL OBTAIN ALL NECESSARY PERMITS FOR WORK TO COMMENCE
- ALL FEDERAL, STATE, AND LOCAL CODES SHALL BE CONSIDERED A PART OF THE SPECIFICATIONS OF THE BUILDING AND SHOULD BE ADHERED TO EVEN IF THEY ARE IN CONFLICT WITH THIS DOCUMENT
- ANY CHANGES REQUESTED TO PLANS PRIOR TO CONSTRUCTION MUST BE REPORTED IN THE FASHION DICTATED BY THE AUTHOR OF THIS DOCUMENT AND AGREED TO BY BOTH CUSTOMER AND AUTHOR
- APPROVAL OF THESE PLANS BY THE REQUIRED MUNICIPAL REVIEWER SIGNIFIES A THOROUGH REVIEW AND ADHERENCE TO THE REQUIRED INSPECTION SCHEDULE BY THE CONTRACTOR LIMITS THE INDEMNITY OF THE MUNICIPALITY

**GENERAL SITE NOTES**

- IT SHALL BE THE RESPONSIBILITY OF THE PERMIT HOLDER TO LOCATE ALL TREES AND VERIFY ALL EXISTING GRADE LEVELS
- IT SHALL BE THE RESPONSIBILITY OF THE PERMIT HOLDER TO LOCATE ALL SITE UTILITIES PRIOR TO OR DURING CONSTRUCTION AND THE HOMEOWNER SHALL BE RESPONSIBLE FOR EXISTING AND FUTURE SPRINKLER HEADS
- GENERAL CONTRACTOR OR PERMIT HOLDER WILL VERIFY ALL SITE MEASUREMENTS PRIOR TO SITE (1) SOIL EROSION AND (2) STORM WATER RUN OFF DURING CONSTRUCTION
- WHEN POSSIBLE, IT SHALL BE COMMON PRACTICE TO LOCATE BUILDING SERVICE MODULES (SUCH AS METERS, CLEAN OUTS, VENT STACK, ETC.) OUT OF DIRECT LINE OF SITE FROM THE STREET

**CONTRACT NOTES**

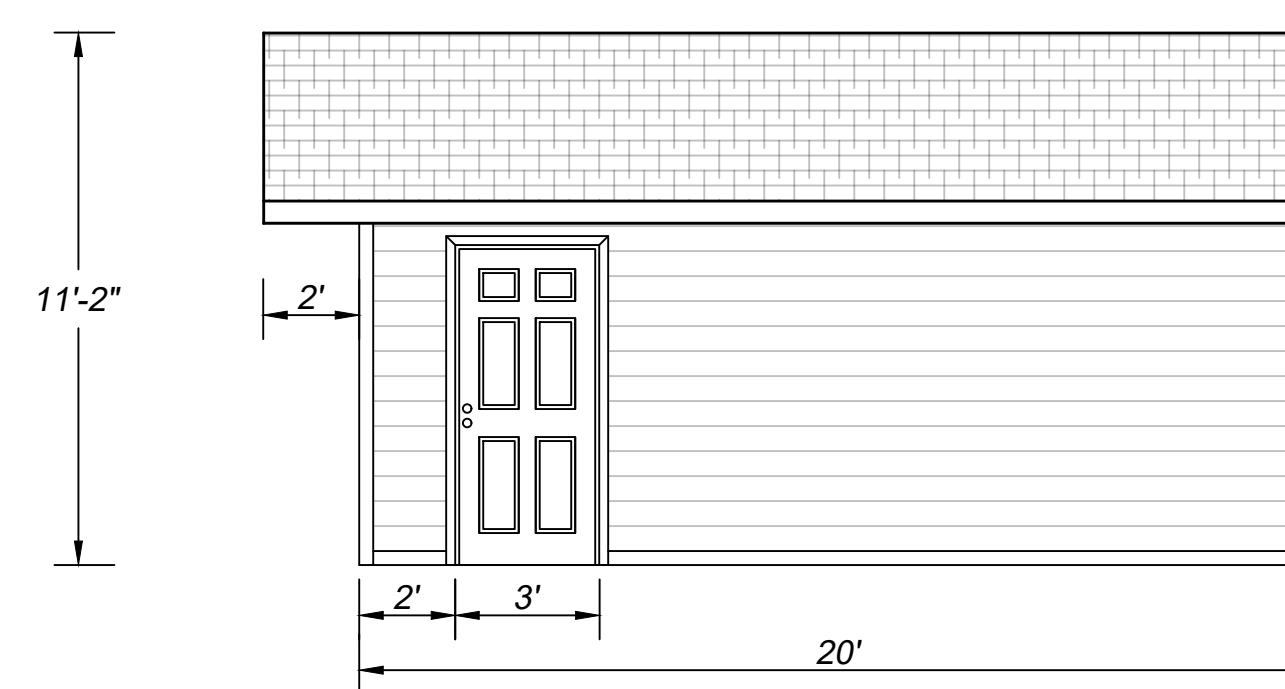
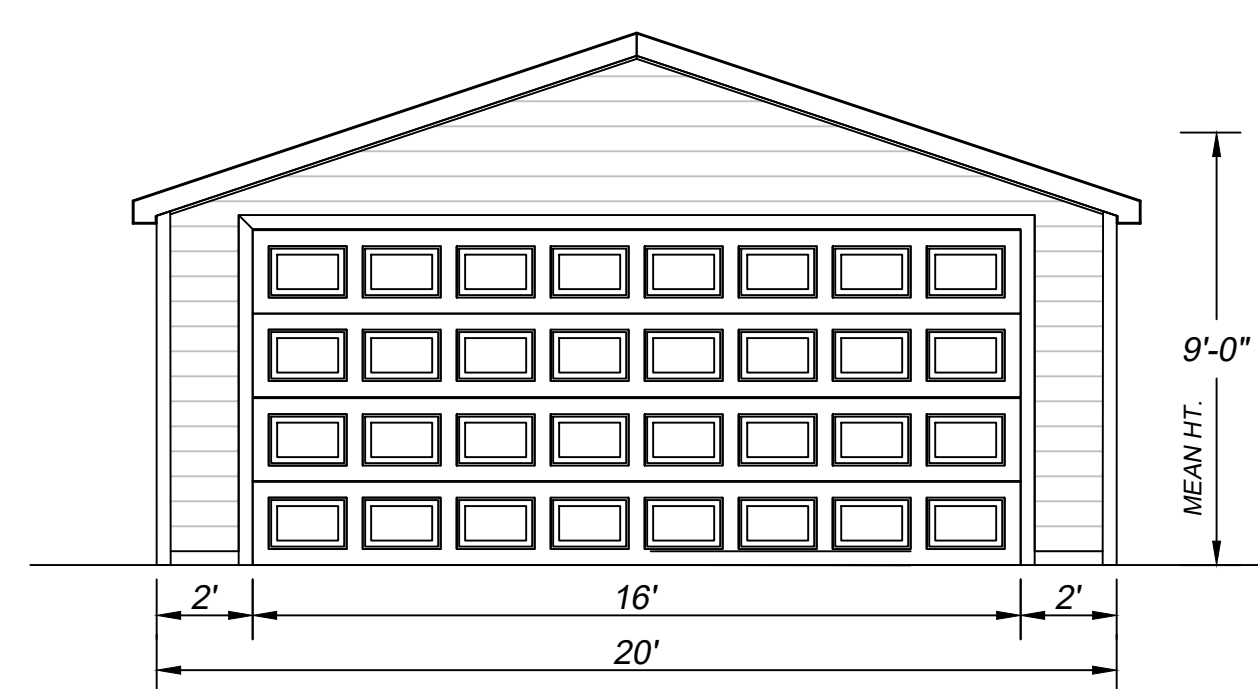
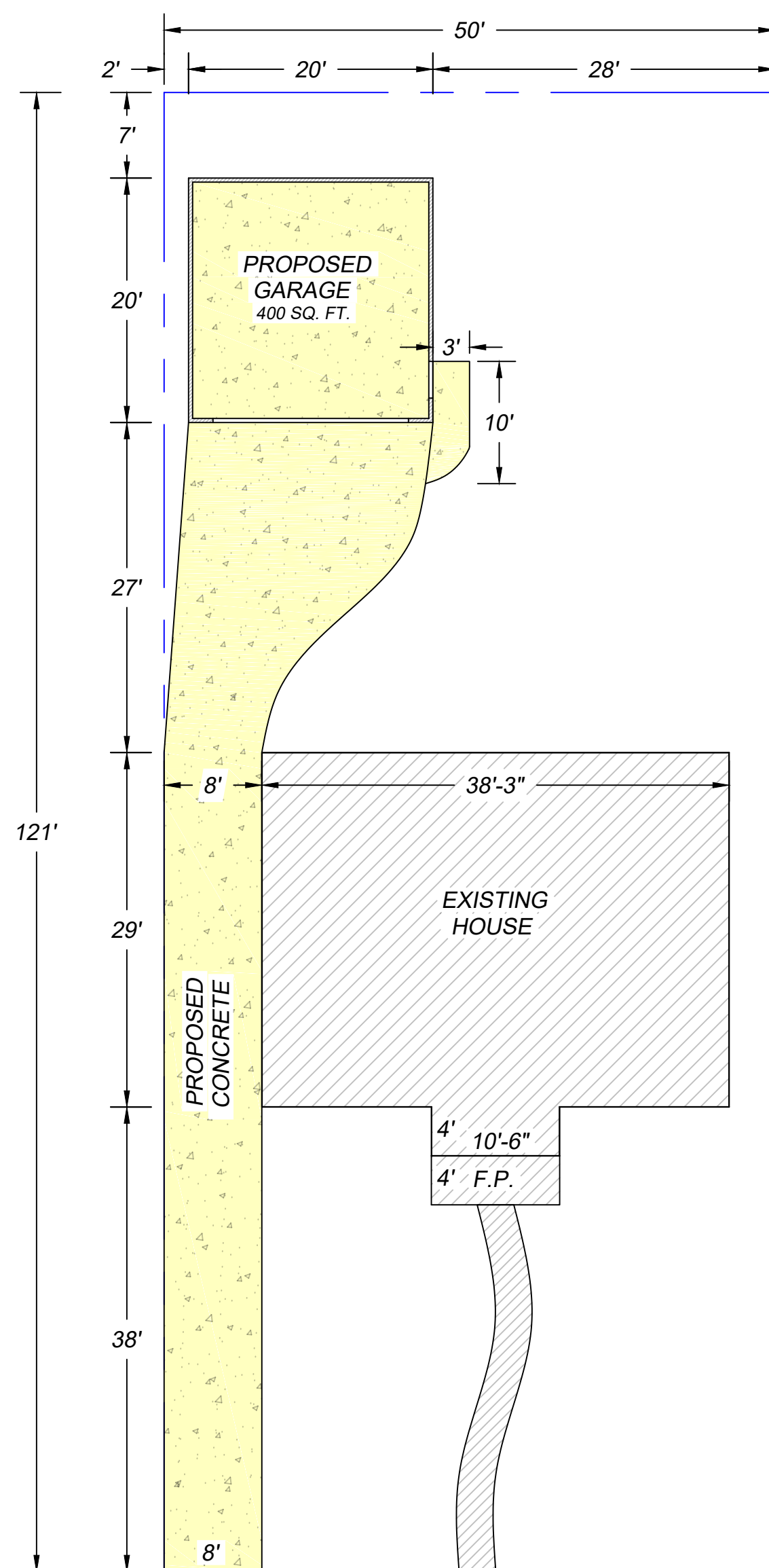
- INSTALL NEW 4" X 24" POURED CONCRETE RATWALLS.
- INSTALL NEW CONCRETE GARAGE FLOOR (20' X 20')
- INSTALL NEW CONCRETE DRIVEWAY FROM CITY WALK TO NEW GARAGE
- BUILD NEW 20' X 20' DETACHED WOOD FRAME GARAGE.
- INSTALL 16' X 7' OVERHEAD GARAGE DOOR. SHORT PANEL - SANDTONE  
1/2" H.P. DOOR OPENER W/ 2 REMOTES
- 36" X 80" 6 PANEL STEEL SERVICE DOOR
- SHINGLES - LANDMARK - BURNT SIENNA  
DRIP EDGE - HERRINGBONE
- (2) #750 ROOF VENTS - COLOR: BROWN
- VINYL SIDING - HERRINGBONE (DOUBLE 4" / DOUBLE 5")  
PERF. VINYL SOFFIT - HERRINGBONE  
ALUM. TRIM - HERRINGBONE
- (1) GARAGE DOOR OPENER OUTLET
- (3) INTERIOR WALL OUTLETS
- (2) INTERIOR LIGHTS
- (2) INTERIOR SWITCHES
- (3) EXT. LIGHTS (SUPPLIED BY HOMEOWNER)

**CONSTRUCTION NOTES**

- DRAWING PAGES WILL BE SCALED ON EITHER, (24" X 36") OR (11" X 17") PAPER AND PRESERVE PROPER FORMATTING & MEASUREMENTS.
- DOOR SIZES ARE INDICATED IN DRAWINGS NOMINALLY AND IT WILL BE THE RESPONSIBILITY OF THE CONTRACTOR TO PROVIDE ROUGH OPENINGS BASED ON THE DOOR MANUFACTURER'S SPECIFICATIONS
- BRACE ALL EXTERIOR CORNERS OF STUD WALLS WITH METAL STRAP BRACING LET INTO STUDS ON 45 DEGREE DIAGONALS FROM PLATE TO PLATE
- ALL RAFTER TAILS TO RECEIVE GALV. HURRICANE STRAPS AT WALL TOP PLATES TO PREVENT WIND UPLIFT

**FDTN. & CONC. NOTES**

- ALL DIMENSIONS ARE CALCULATED FROM OUTSIDE FACE OF MASONRY TO OUTSIDE FACE OF MASONRY
- FROST DEPTH IS ASSUMED TO BE 42" BELOW GRADE
- COMPRESSIVE STRENGTH OF CONCRETE TO MEET OR EXCEED THE REQ'S OF MRC TABLE R402.2 UNDER THE CATEGORY OF SEVERE POTENTIAL FOR WEATHERING
- FOOTINGS SHALL REST ON UNDISTURBED SOIL AND GENERAL CONTRACTOR SHALL VERIFY SOIL IS FREE OF LOOSE DEBRIS AND WATER PRIOR TO POURING OF CONCRETE
- CONTRACTOR TO BE AWARE OF EXISTING FOUNDATIONS AND PREVENT AGAINST OVER EXCAVATION BELOW EXISTING FDTN. BEARING LINE
- PER MRC R506.22 A MIN. 4" THICK BASE COURSE SHALL BE PLACED ON THE PREPARED SUB-GRADE WHERE THE SLAB IS BELOW GRADE EXCEPT WHEN THE SUB-GRADE FALLS WITHIN THE CLASSIFICATION OF GROUP 1 OF MRC TABLE R405.1
- PER MRC R506.23 A 6 MIL THICK VAPOR RETARDER (OR BETTER) WITH MIN. 6" JOINT LAPPING SHALL BE PLACED BETWEEN THE CONCRETE FLOOR SLAB AND BASE WHERE APPLICABLE



**STOWERS RESIDENCE**  
14597 ARTESIAN ST.  
DETROIT, MI 48223  
313-690-2063

**PROPOSED 20' X 20' GARAGE  
CONCRETE FLAT WORK**

**SHEET INDEX**

DESCRIPTION

GENERAL NOTES  
SITE SURVEY  
GARAGE FLOOR PLAN  
SECTION  
ELEVATIONS

**SET ISSUE DATES**

DATE: ISSUE:

**SHEET NOTES**

REF. NOTES:  
DRAWN BY: S.A. FERRISE  
CHECKED BY:

SHEET No.

**A-1**  
Page 1 OF 1

PROJECT No. EG2005

DATE CREATED: 18-AUGUST-2020