

DHDC 23-8517

APPROVAL DOCUMENT – POST AT WORK LOCATION

CITY OF DETROIT
HISTORIC DISTRICT COMMISSION

2 WOODWARD, SUITE 808
DETROIT, MICHIGAN 48226

09/17/24

CERTIFICATE OF APPROPRIATENESS

Blake Hill
McIntosh Poris Associates
36801 Woodward Avenue, Suite 20
Birmingham, MI 48009

RE: Application Number 23-8517; 20119 Wisconsin (AKA 8730 Chippewa); William E. Higginbotham School Historic District
Project Scope: Rehabilitate school building, erect multi-family buildings (revisions to previously approved design)

Dear Applicant,

At the Regular Meeting that was held on September 11, 2024, the Detroit Historic District Commission (“DHDC”) reviewed the above-referenced application, consisting of revisions to the application originally approved at the October 11, 2023 Meeting. Pursuant to Section 5(1) of the Michigan Local Historic District Act, as amended, being MCL 399.205 (1) and Sections 21-2-73/21-2-78 of the 2019 Detroit City Code; the DHDC hereby issues a Certificate of Appropriateness (“COA”) for the following work, effective on September 17, 2024, as it meets the Secretary of Interior’s Standards for Rehabilitation and the district’s Elements of Design:

- ***Rehabilitate school building, erect multi-family buildings***

Please retain this COA for your files and post it at the subject property until work is complete. It is important to note that approval by the DHDC does not waive the applicant's responsibility to comply with any other applicable ordinances or statutes. If you have any questions regarding the foregoing, please contact staff at 313-224-1762 or hdc@detroitmi.gov.

For the Commission:



Garrick B. Landsberg, Director

HIGGINBOTHAM SCHOOL

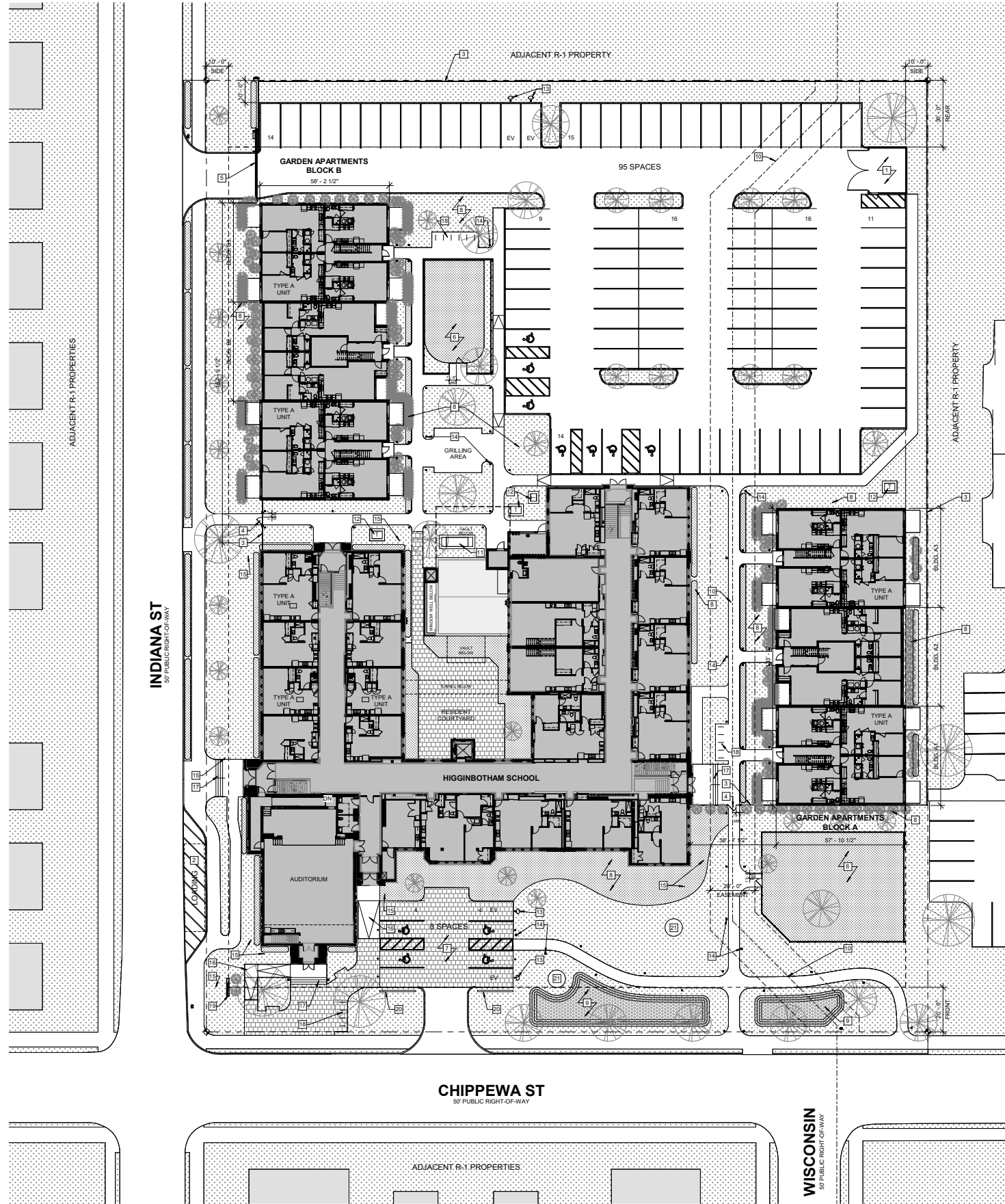


HDC PRESENTATION
AUGUST 29, 2024


URGE IMPRINT

**MCINTOSH
PORIS
ARCHITECTS**

© McIntosh Poris Architects 2024



SITE PLAN

MEDIUM GRAY
EIFS

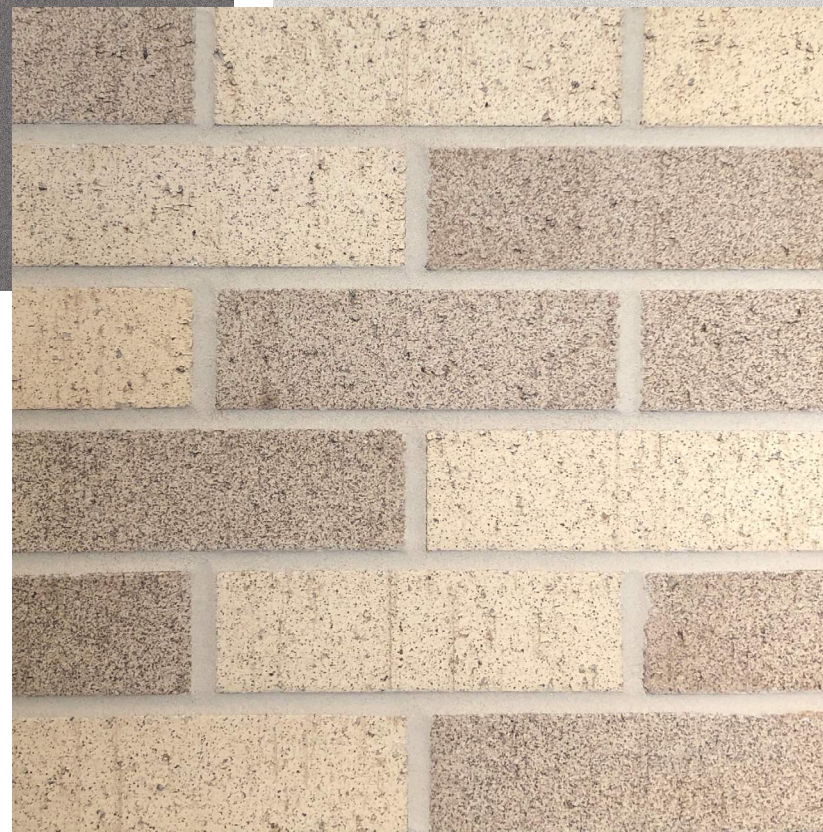
LIGHT GRAY
EIFS

EX. SCHOOL WINDOW
FRAME COLOR



**CLAY TILE
ROOF**

BLACK FRAME
**COMPOSITE
WINDOW**



CUSTOM BRICK BLEND

**BRICK
VENEER**





STREET ELEVATION

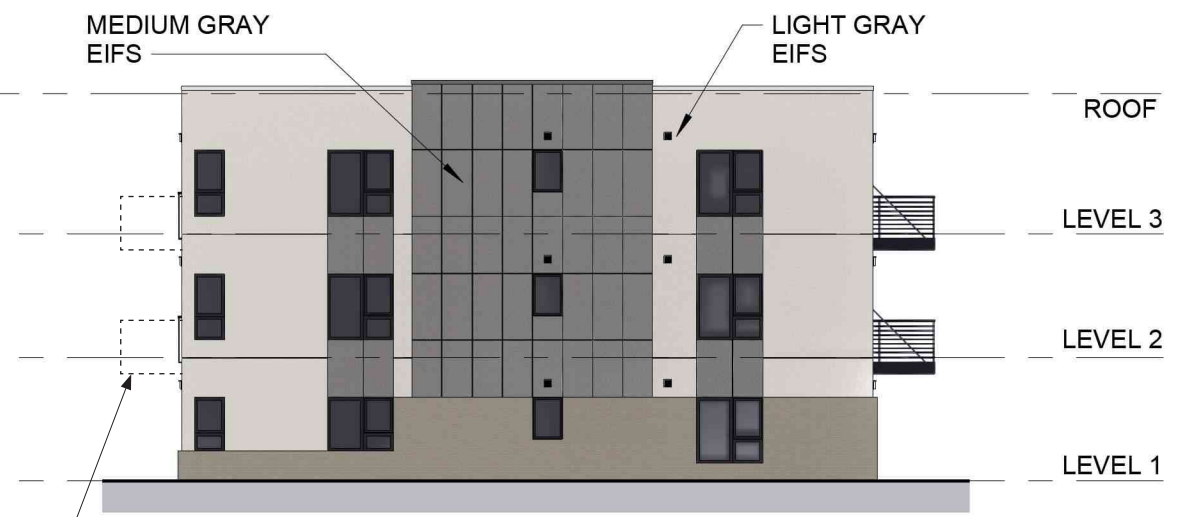


SIDE ELEVATION

FULL DEPTH BALCONIES AT BLOCK A



ENTRY ELEVATION



SIDE ELEVATION

FULL DEPTH BALCONIES AT BLOCK A

NOTE:
 JULIET BALCONIES AT STREET ELEVATION OF BLOCK B.
 FULL DEPTH BALCONIES AT STREET AND ENTRY ELEVATIONS AT BLOCK A.
 REFERENCE SITE PLAN FOR BLOCK LOCATIONS.



AUGUST 29, 2024
HIGGINBOTHAM SCHOOL

SIDEWALK VIEW

**MCINTOSH
PORIS
ARCHITECTS**

© McIntosh Poris Architects 2024



AUGUST 29, 2024
HIGGINBOTHAM SCHOOL

CORNER VIEW

**MCINTOSH
PORIS
ARCHITECTS**

© McIntosh Poris Architects 2024



AUGUST 29, 2024
HIGGINBOTHAM SCHOOL

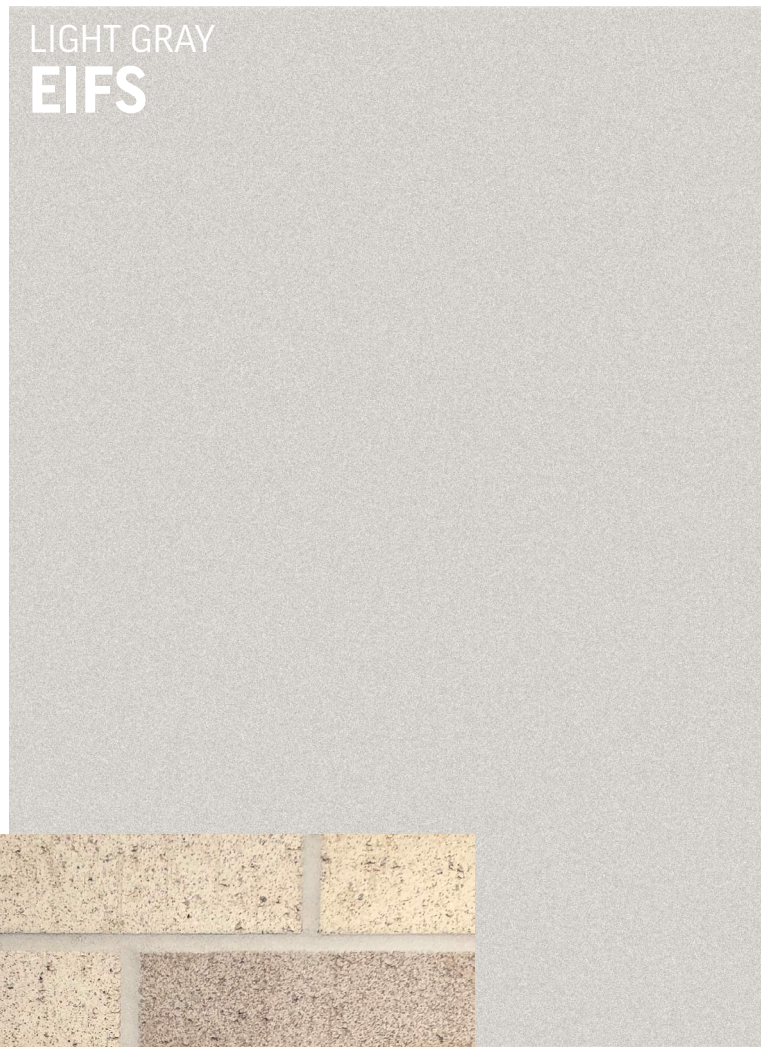
PARKING LOT VIEW

**MCINTOSH
PORIS
ARCHITECTS**

© McIntosh Poris Architects 2024

MEDIUM GRAY
EIFS

LIGHT GRAY
EIFS



BLACK FRAME
COMPOSITE
WINDOW



CUSTOM BRICK BLEND
**BRICK
VENEER**



SIDEWALK
VIEW



CORNER
VIEW



PARKING LOT
VIEW