

DHDC 23-8274

APPROVAL DOCUMENT – POST AT WORK LOCATION

CITY OF DETROIT
HISTORIC DISTRICT COMMISSION

2 WOODWARD, SUITE 808
DETROIT, MICHIGAN 48226

4/18/23

CERTIFICATE OF APPROPRIATENESS

John Biggar
Studio Zone, LLC
350 Madison Ave., 4th Floor
Detroit, MI 48226

RE: Application Number 23-8274; 4152 (4156) Third; Willis-Selden Historic District

Dear Applicant,

At the Regular Meeting that was held on April 12, 2023, the Detroit Historic District Commission (“DHDC”) reviewed the above-referenced application. Pursuant to Section 5(1) of the Michigan Local Historic District Act, as amended, being MCL 399.205 (1) and Sections 21-2-73/21-2-78 of the 2019 Detroit City Code; the DHDC hereby issues a Certificate of Appropriateness (“COA”) for the following work, effective on April 18, 2023, as it meets the Secretary of Interior’s Standards for Rehabilitation and the district’s Elements of Design:

- ***Erect 48’x17.5’ patio roof structure, with wood and metal framing.***

The Certificate of Appropriateness is issued with the following conditions:

- ***The structure is built inside the property line.***
- ***The footings clear any impact from the building’s foundation.***
- ***The fiberglass roof material be changed to a more appropriate design.***
- ***The applicant provide HDC staff a review of the above items before installation.***

Please retain this COA for your files and post it at the subject property until work is complete. It is important to note that approval by the DHDC does not waive the applicant's responsibility to comply with any other applicable ordinances or statutes. If you have any questions regarding the foregoing, please contact staff at 313-224-1762 or hdc@detroitmi.gov.

For the Commission:



Daniel Rieden, Detroit Historic District Commission

Benjamin Buckley

From: John Biggar <jpb@ware-house.com>
Sent: Thursday, March 16, 2023 10:00 AM
To: Historic District Commission (Staff); Garrick Landsberg; Eric McCann
Subject: [EXTERNAL] Willis Show Bar
Attachments: 01_HDC Project Review Request Willis Show Bar.pdf; 2109 A210 Site Plan v2.pdf; Willis Show 200715 Patio Elevs Newl- 24x36 -DD Concept PATIO ONLY.pdf; Willis Show Bar - Existing Conditions.docx; Willis Show Bar- Description of Work.docx; Willis Show Patio 200715 Prop Patio Site Plan-11x17 DD PATIO ONLY.pdf; Willis Show Bar - Willis Street Elevation.png; Willis Show Bar - Willis-3rd St Corner.png

Follow Up Flag: Follow up

Flag Status: Flagged

Good Morning

Please find the application and supporting material for a patio enclosure structure and roof for the Willis Show Bar at 4156 3rd Street, the corner of Willis and 3rd. It appears the south side of the Willis is in the historic district while the north side of Willis is outside the Historic District.

For this portion of the work, the owners are only erecting the structure and roof for the enclosed patio. They are not able to do any of the additional work shown on the Steve Flum drawings.

John P. Biggar, PA, AIA, NCARB

Integrity Building Group

350 Madison Avenue, 4th Floor

Detroit, Michigan 48226

jpb@ware-house.com

313 549 2790 p

Electronic Privacy Notice. This e-mail, and any attachments, contains information that is, or may be, covered by electronic communications privacy laws, and is also confidential and proprietary in nature. If you are not the intended recipient, please be advised that you are legally prohibited from retaining, using, copying, distributing, or otherwise disclosing this information in any manner. Instead, please reply to the sender that you have received this communication in error, and then immediately delete it. Thank you in advance for your cooperation.

--

Willis Show Bar

4156 3rd Street; Detroit, Michigan

Description of Existing Conditions:

The existing building is a load bearing, concrete block building with art deco details at the entrance to the bar at the corner of 3rd Avenue and Willis Street. (See elevations prepared by Steve Flum Architect)

The areas of exposed, concrete block along Willis have been painted a dark brown. A painted, mural sign is located along Willis approximately in the middle of the Willis façade.

Willis Show Bar

4156 3rd Street; Detroit, Michigan

*Description of Proposed Work:*Exterior Work – Canopy Enclosure Only for Scope of Work

1. Wood canopy structure, stained.
2. Corrugate fiberglass panels
3. Concrete foundations for structural posts
4. Wood beams and cross purlins, stained

No work will be on existing concrete masonry wall or other elements of the original design other than erecting the patio structure and roof.

- All the structural work is shown on drawing A2.10 by studiozONE, llc
- The area of the work for the Enclosed Patio is shown on the “Proposed Site Plan” prepared by Steve Flum
- The work areas of the enclosed patio are shown on the Elevations prepared by Steve Flum, the areas only identified as in the Scope of Work.

From: [John Biggar](#)
To: [Dan Rieden](#)
Cc: [Eric McCann](#)
Subject: [EXTERNAL] Re: 4156 Third - 4/12/23 HDC Meeting
Date: Tuesday, March 28, 2023 9:00:36 AM
Attachments: [2109 A210 Architectural Site Plan v2.pdf](#)
[2109 A510 Exterior Elevations.pdf](#)
[2109 A310 Typical Site Plan v3.pdf](#)

Good Morning Dan

Please find the updates to the package. Please remove the Flum drawings from the submission. The updated drawings show the full extent of the work.

John P. Biggar, PA, AIA, NCARB

Integrity Building Group

350 Madison Avenue, 4th Floor
Detroit, Michigan 48226
jpb@ware-house.com
313 549 2790 p

Electronic Privacy Notice. This e-mail, and any attachments, contains information that is, or may be, covered by electronic communications privacy laws, and is also confidential and proprietary in nature. If you are not the intended recipient, please be advised that you are legally prohibited from retaining, using, copying, distributing, or otherwise disclosing this information in any manner. Instead, please reply to the sender that you have received this communication in error, and then immediately delete it. Thank you in advance for your cooperation.

--

From: [Eric McCann](#)
To: [Dan Rieden](#)
Cc: [John Biggar](#)
Subject: [EXTERNAL] Re: 4156 Third - 4/12/23 HDC Meeting
Date: Friday, March 31, 2023 3:00:26 PM
Attachments: [2109 A310 Typical Site Plan v3.pdf](#)
[230330 eplastic FRP Charts on Corrugated Fiberglass Profiles.pdf](#)
[230331 eplastic FRP Color Clear, Finish Gloss, Industrial.pdf](#)

Hi Mr. Dan Rieden,

Thank you and you are Welcome!

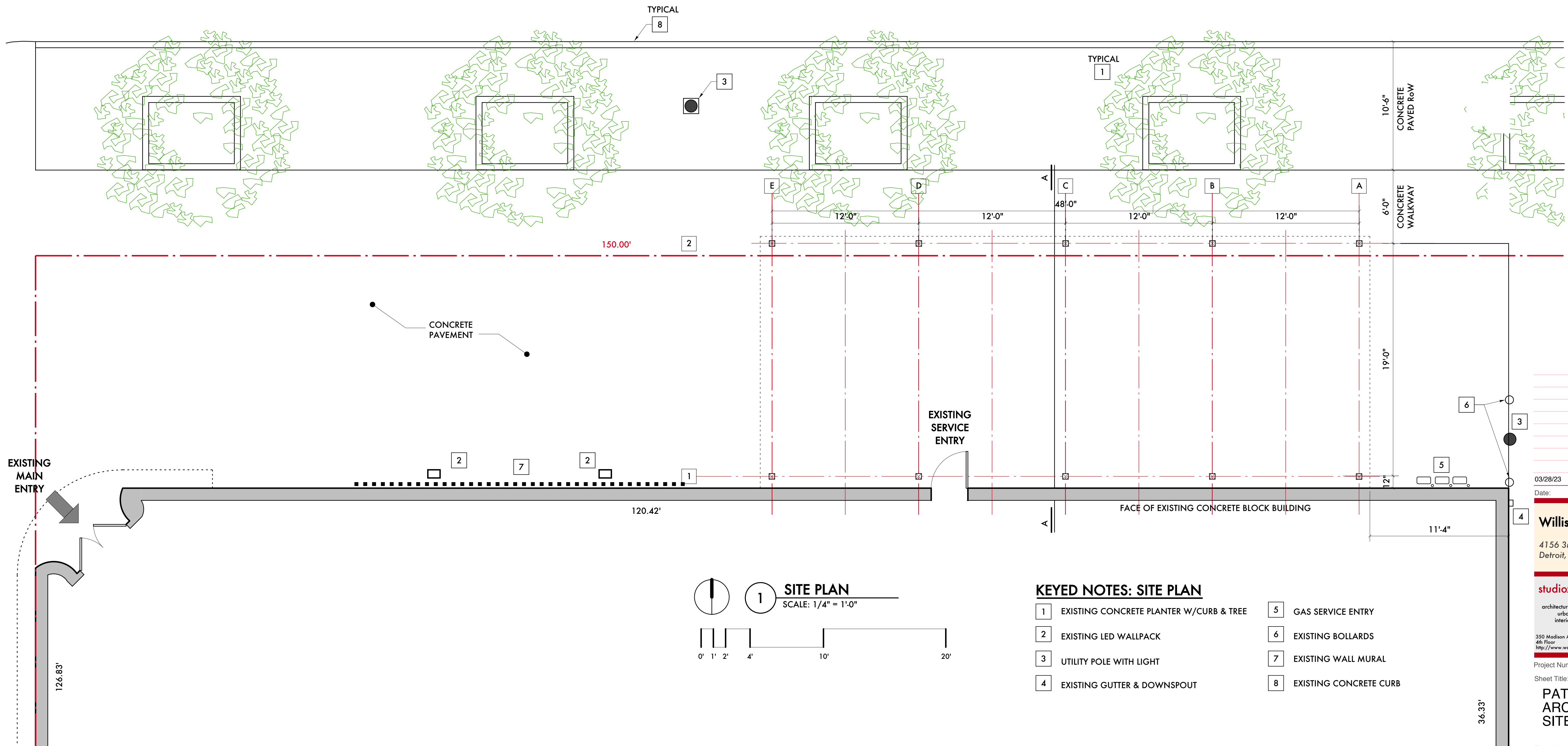
The Structure is designed to be independent, Free-Standing of the existing building.
Canopy will have an overhang along the Rake (12-Inch), this will be made by 2 x 4's while the Front overhang (along West Willis) will be extended (16-Inch) with Steel (HSS).
Posts and Beams are Structural Steel (Hollow Steel Sections) while Purlins will be Wood (2 x 4's).
All the Steel, Posts & Beams will be painted, color – Brown.
Wood Purlins will be painted, color – Natural Color.
Roof Panels will be Corrugated FRP (Fiber Reinforced Panels), color – Clear, Translucent.

I send you our Revised Plan and Product Cut Sheet of FRP Corrugated Roof Panel we are planning to use along with a photograph of it.

Thanks,

Eric McCann, PA
studio**zONE**, llc
350 Madison Avenue, 4th Floor
Detroit, Michigan 48226
EMcCann@ibgdetroit.com
313 300-0082 p

Electronic Privacy Notice. This e-mail, and any attachments, contains information that is, or may be, covered by electronic communications privacy laws, and is also confidential and proprietary in nature. If you are not the intended recipient, please be advised that you are legally prohibited from retaining, using, copying, distributing, or otherwise disclosing this information in any manner. Instead, please reply to the sender that you have received this communication in error, and then immediately delete it. Thank you in advance for your cooperation.



1 SITE PLAN
SCALE: 1/4" = 1'-0"

- KEYED NOTES: SITE PLAN**
- 1 EXISTING CONCRETE PLANTER W/CURB & TREE
 - 2 EXISTING LED WALLPACK
 - 3 UTILITY POLE WITH LIGHT
 - 4 EXISTING GUTTER & DOWNSPOUT
 - 5 GAS SERVICE ENTRY
 - 6 EXISTING BOLLARDS
 - 7 EXISTING WALL MURAL
 - 8 EXISTING CONCRETE CURB

03/28/23 Historic Commission
Date: Issued For:

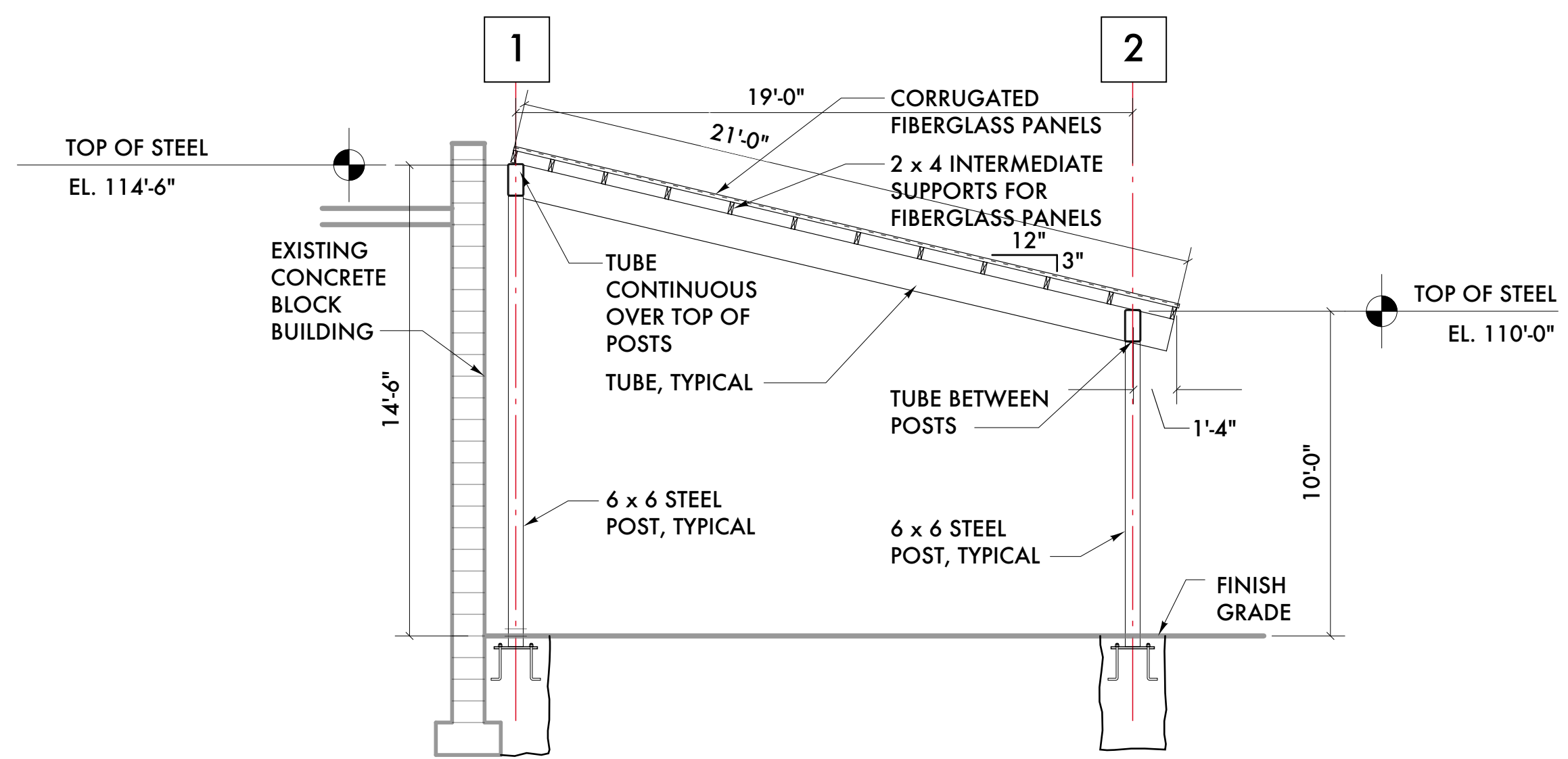
Willis Show Bar
4156 3rd Street
Detroit, Michigan 48201

studiozONE : DETROIT
architectural
urban DESIGN
interior

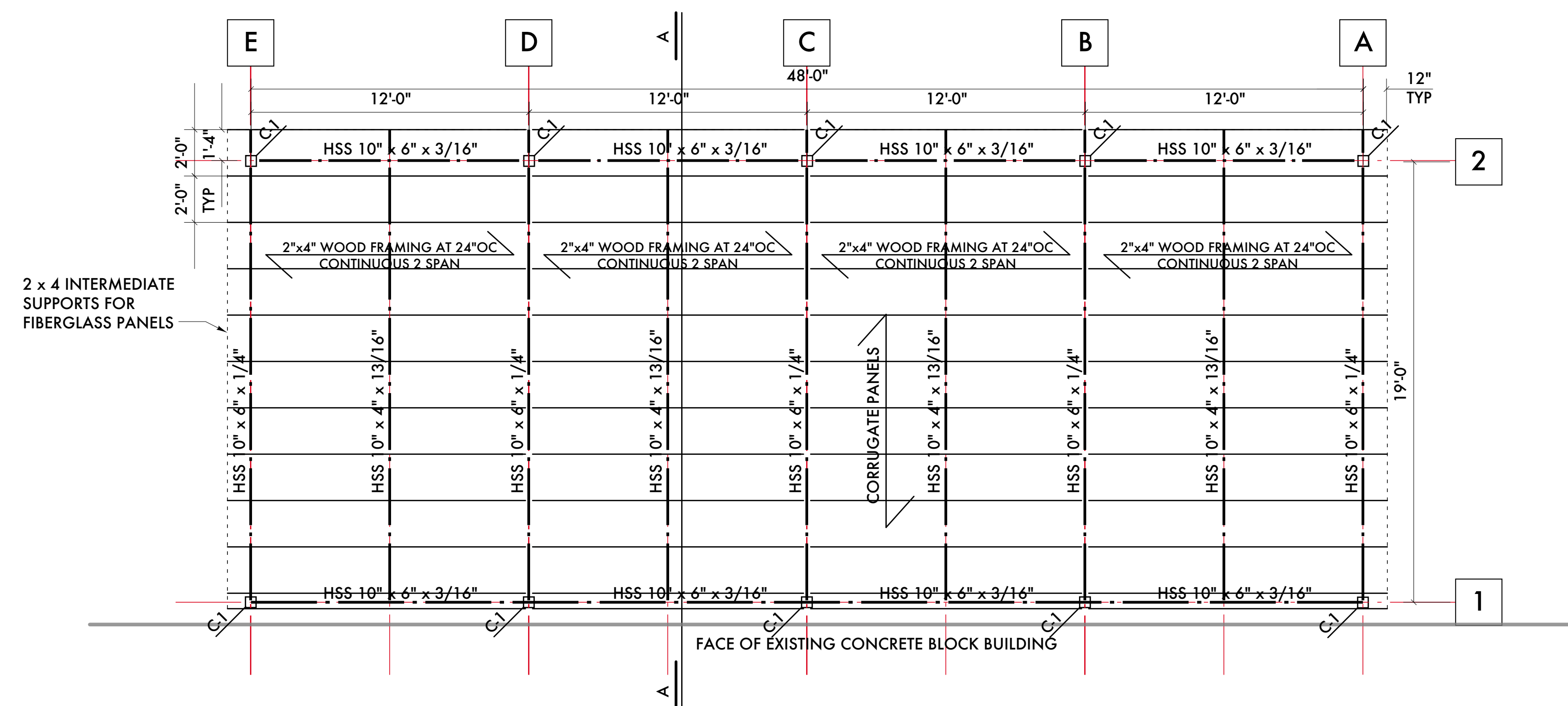
350 Madison Avenue Detroit, Michigan 48226
4th Floor 313.549.2790 voice
http://www.warehouse.com 313.872.5438 fax

Project Number: 2021-09
Sheet Title:
PATIO - ARCHITECTURAL SITE PLAN

Sheet Number:
A2.10



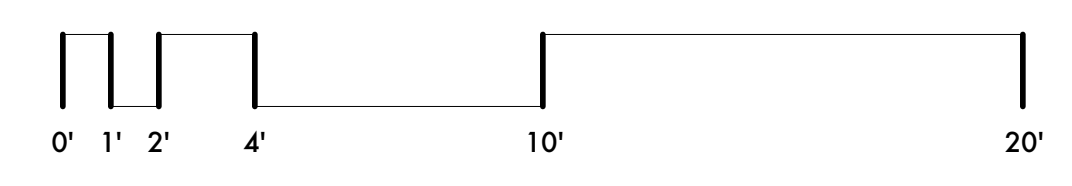
2 FRAMING - SECTION A-A
SCALE: 1/4" = 1'-0"



1 FRAMING PLAN
SCALE: 1/4" = 1'-0"

CANOPY FRAMING:
C-1 HSS6"x6"x 3/16" COLUMN WITH 12"x 3/4" x 12" BASE PLATE WITH (4) GALVANIZED HAS THREADED RODS WITH 6 3/4" MINIMUM EMBEDMENT WITH HILTI HIT HY-200 ADHESIVE

NOTES: ALL TUBE TO TUBE CONNECTIONS TO BE WELDED ALL AROUND WITH 3/16" FILLET, GRIND WELDS SMOOTH, PROVIDE ERECTION CLIPS AS NECESSARY.



03/28/23	Historic Commission
03/22/23	Structural Review
03/15/23	Historic Commission
02/20/23	Owner Review
Date:	Issued For:

Willis Show Bar
Willis Street
Detroit, Michigan 48201

studioONE : DETROIT
architectural
urban DESIGN
interior

350 Madison Avenue Detroit, Michigan 48226
4th Floor 313 549 2790 voice
http://www.ware-house.com 313 872 5638 fax

Project Number: 2021-09

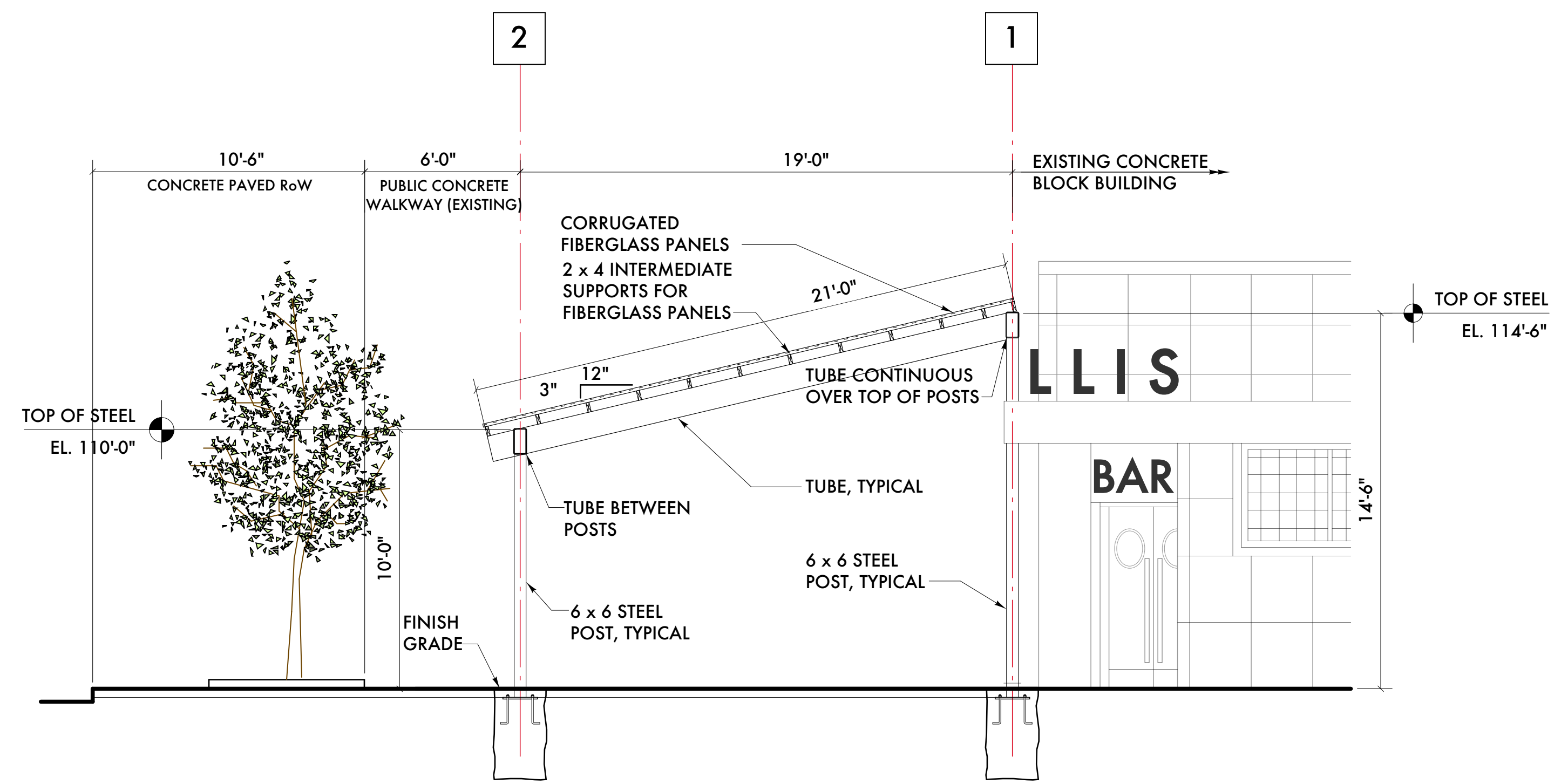
Sheet Title:

**PATIO -
FRAMING PLAN
& SECTION**

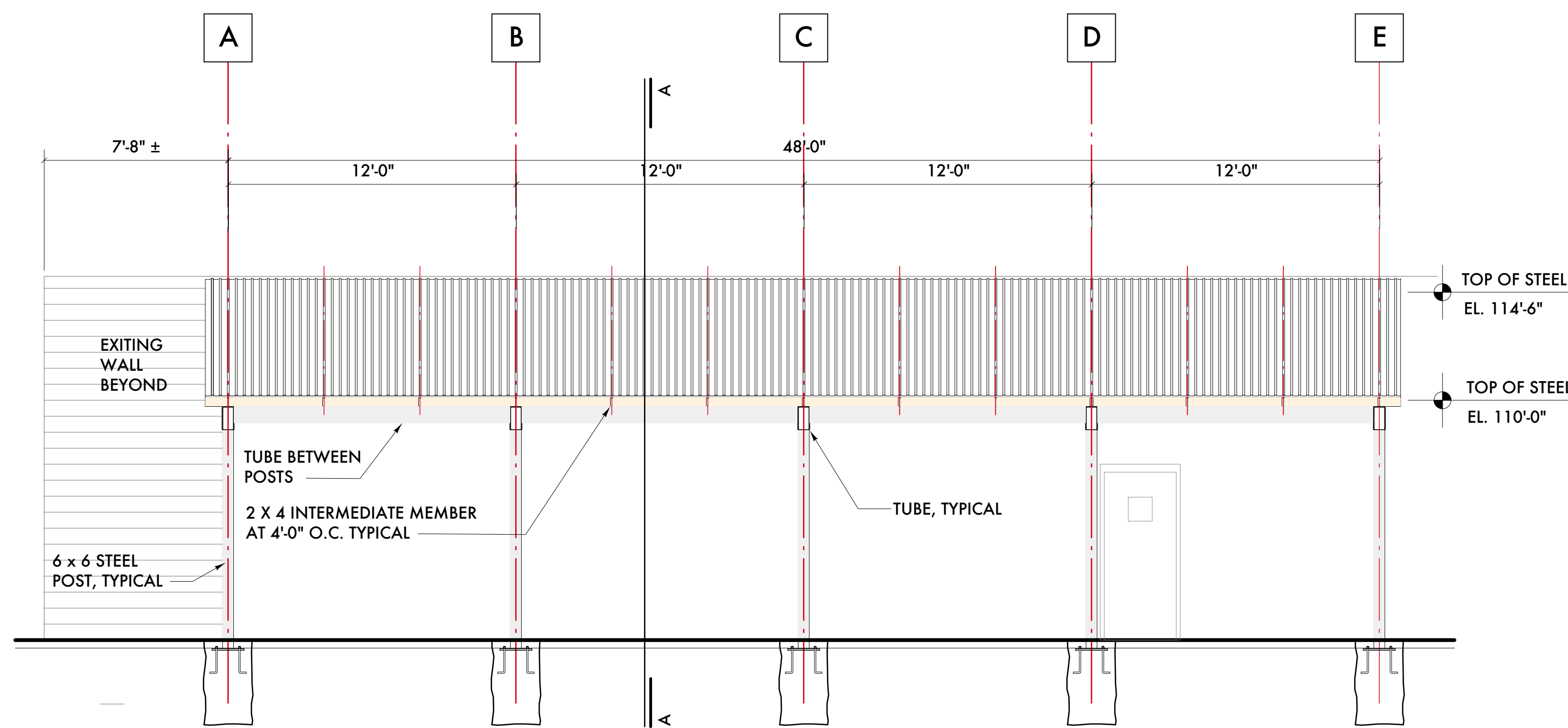
Sheet Number:

A3.10

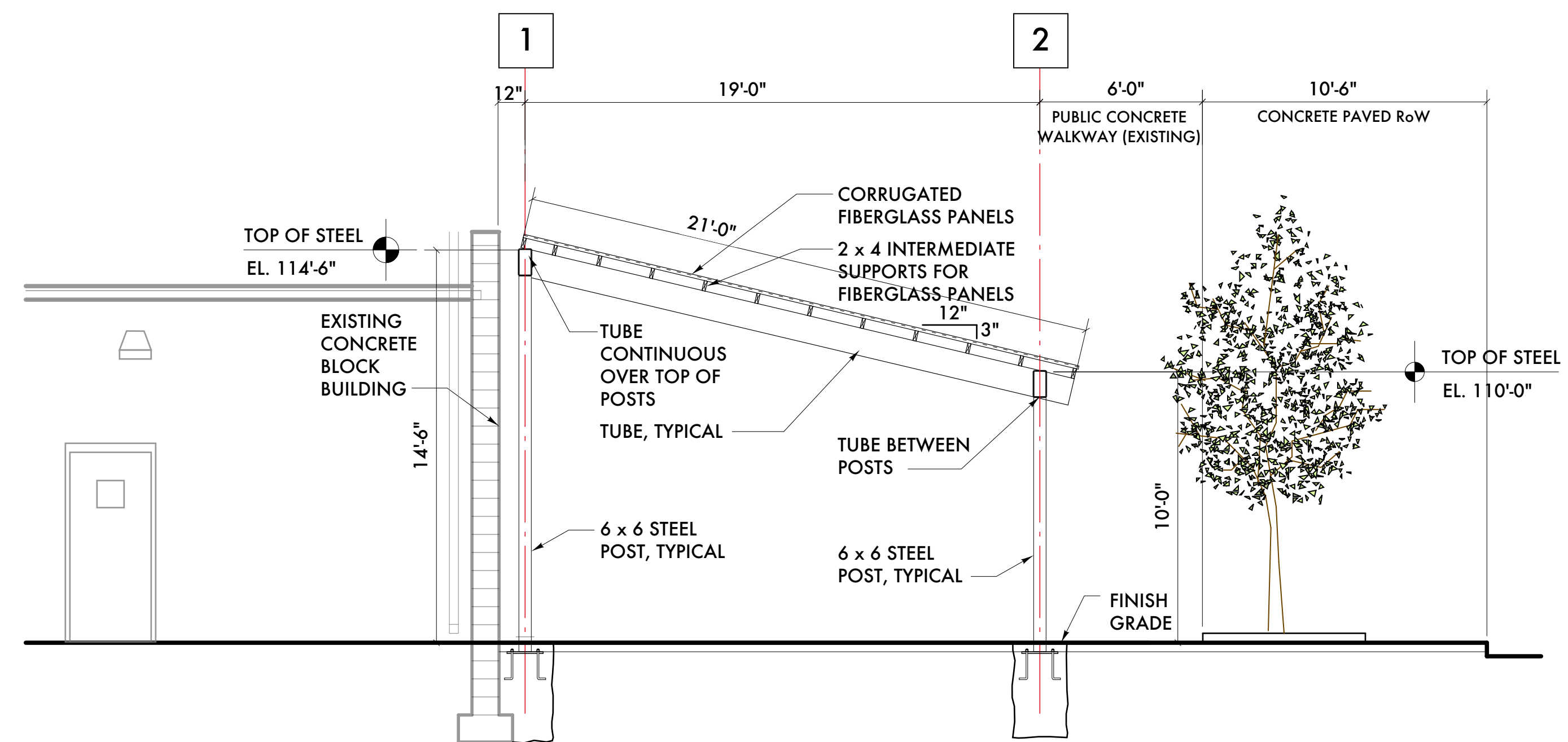
© 2023 studioONE, llc



1 EXTERIOR ELEVATION - WEST
SCALE: 1/4" = 1'-0"



2 EXTERIOR ELEVATION - NORTH
SCALE: 1/4" = 1'-0"



3 EXTERIOR ELEVATION - EAST
SCALE: 1/4" = 1'-0"

03/28/23 Historic Commission
Date: Issued For:

Willis Show Bar
4156 3rd Street
Detroit, Michigan 48201

studiozONE : DETROIT
architectural
urban DESIGN
interior

330 Madison Avenue Detroit, Michigan 48226
4th Floor 313 549 2790 voice
http://www.warehouse.com 313 872 5638 fax

Project Number: 2021-09

Sheet Title:
**PATIO -
ELEVATIONS**

Sheet Number:

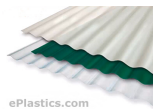
A5.10

© 2023 studiozONE, llc

CHARTS ON CORRUGATED FIBERGLASS PROFILES

1/11/2015

by Anthony ZAZO



CLICK HERE TO VIEW CHARTS ON CORRUGATED PROFILES



(<https://system.netsuite.com/core/media/media.nl?id=1672&c=621686&h=90367ae48f7364e77dd7&whence=>)

Profile Guide

(<https://system.netsuite.com/core/media/media.nl?id=1672&c=621686&h=90367ae48f7364e77dd7&whence=>)

Click thumbnail for larger picture! A hard copy of this chart is available to fax to you in case you can not see the photo. Please call one of our industrial salesmen!

Span and Loading Table for FRP Corrugated Panel

180 Series Panels

Span & Loading Table							
TYPE	2.5"	2.67"	R	U	4.2"	7.2"	5.33"
ROOFING							
10 psf	66"	71"	63"	71"	72"	76"	75"
20 psf	57"	62"	49"	58"	60"	65"	74"
30 psf	47"	54"	34"	44"	48"	54"	72"
40 psf	38"	46"	20"	31"	36"	42"	70"
Siding							
10 psf	67"	73"	67"	75"	75"	80"	76"
20 psf	63"	68"	57"	65"	66"	71"	75"
30 psf	59"	62"	46"	55"	58"	63"	73"
40 psf	54"	57"	36"	46"	49"	55"	72"
	2.5"	2.67"	R	U	4.2"	7.2"	5.33"

See the dimensional specifications chart to see what the type looks like!



(<https://system.netsuite.com/core/media/media.nl?id=1671&c=621686&h=e90352c97c4e7485eeb9>)

Typical Corrugated FRP Construction Details

(<https://system.netsuite.com/core/media/media.nl?id=1671&c=621686&h=e90352c97c4e7485eeb9>)

Click on thumbnail to view larger picture! This information can also be mailed to you, please call one of our industrial salesmen!

Typical FRP Panel Physical Properties

8 oz./ft. squared Nominal Weight

TYPICAL PHYSICAL PROPERTIES		
R panel - Chopped Strand Mat Reinforcement	ASTM No.	
Tensile Strength	D638	10,000 PSI

Tensile Modulus	D638	SEE NOTE 1
Flexural Strength	D790	25,000 PSI
Flexural Modulus	D790	SEE NOTE 2
Compressive Strength	D695	25,000 PSI
Shearing Strength	D732	12,000 PSI
Barcol Hardness	D2583	45
Glass Content	D2584	22% ± 2%
Water Absorption	D570	0.25% @ 72°F/72 hrs.
Specific Gravity	D792	1.45
Izod Impact	D256	9.0 ft. lbs/in.
Coefficient of Linear Thermal Expansion	D696	SEE NOTE 3
Flash Ignition Temperature	D1929	730° F
R panel - Woven Roving/Chopped strand mat reinforcement		
ASTM No.		
Tensile Strength	D638	23,000 PSI
Tensile Modulus	D638	SEE NOTE 4
Flexural Strength	D790	33,000 PSI
Flexural Modulus	D790	SEE NOTE 5
Compression Strength	D695	30,000 PSI
Shearing Strength	D732	16,000 PSI
Barcol Hardness	D2583	45
Glass Content	D2584	35% ± 2%
Water Absorption	D570	0.25% @ 72°F/72 hrs.
Specific Gravity	D792	1.6
Izod Impact	D256	14.0 ft. lbs/in.
Flash Ignition Temperature	D1929	730° F

Note 1 = 1.6×10 to the 6th power (psi)

Note 2 = 1.10×10 to the 6th power (psi)

Note 3 = 2.09×10 to the neg. 5th power in/in/°F

Note 4 = 1.5×10 to the 6th power (psi)

Note 5 = 1.2×10 to the 6th power (psi)

Typical Light Transmission Values		
COLOR	150 Series	180 Series
400 Light Green	85%	75%
614 White	65%	55%
718 Clear	94%	93%

Percentages given were obtained using ASTM 1494-60, and are subject to tolerances of ± 5%.

TAGGED WITH:

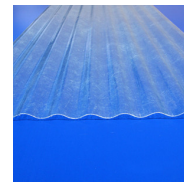
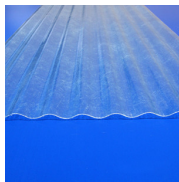
- FRP (/blog/tag/frp)
- blog (/blog/tag/blog)

Narrowed By: Clear (/Fiberglass/Building-Products/Corrugated/Custitem20/Gloss,Industrial)

Gloss (/Fiberglass/Building-Products/Corrugated/Custitem19/Clear/Custitem20/Industrial)

Industrial (/Fiberglass/Building-Products/Corrugated/Custitem19/Clear/Custitem20/Gloss)

Clear All (/Fiberglass/Building-Products/Corrugated)



(/6oz-clear-corrugated-fiberglass-panels-2-1-2-corrugation-26-x-96)

(/FRPCORR600CLR26X120)

6 Oz Clear Corrugated Fiberglass 26" X 96" Sheet (/6oz-Clear-Corrugated-Fiberglass-Panels-2-1-2-Corrugation-26-X-96)

Super 600 6 oz. Clear #700, 26" x 96", 2-1/2" x 1/2" Profile Fiberglass Sheet. Commercial Grade Material.

*****This material contains visible fibers and is not optically transparent*****

*****Please select option D-Sheets up to 48x96 for shipping during checkout*****

BUY NOW >> (6oz-clear-corrugated-fiberglass-panels-2-1-2-corrugation-26-x-96)

6 Oz Clear Corrugated Fiberglass 26" X 120" Sheet (/FRPCORR600CLR26X120)

Super 600 6oz. Clear #700, 26" x 120", 2-1/2" x 1/2" Profile Fiberglass Sheet. Commercial Grade Material.

*****This material contains visible fibers and is not optically transparent*****

BUY NOW >> (FRPCORR600CLR26X120)

1 – 9 \$81.83

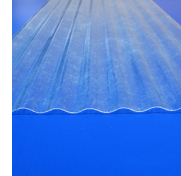
10 – 24 \$73.72

25 – 49 \$67.09

50 – 99 \$61.56

1 – 9 \$65.45
 10 – 24 \$58.96
 25 – 49 \$53.65
 50 – 99 \$49.23
 100 + \$45.40

100 + \$56.76



(/6oz-clear-corrugated-fiberglass-panels-2-1-2-corrugation-26-x-144)

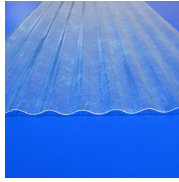
**6 Oz Clear Corrugated Fiberglass
 26" X 144" Sheet (/6oz-Clear-Corrugated-Fiberglass-Panels-2-1-2-Corrugation-26-X-144)**

Super 600 6 oz. Clear #700, 26" x 144",
 2-1/2" x 1/2" Profile Fiberglass Sheet.
 Commercial Grade Material.

*****This material contains visible fibers and is not optically transparent*****

BUY NOW >> (6oz-clear-corrugated-fiberglass-panels-2-1-2-corrugation-26-x-144)

1 – 9 \$110.45
 10 – 24 \$99.50
 25 – 49 \$90.55
 50 – 99 \$83.08
 100 + \$76.62



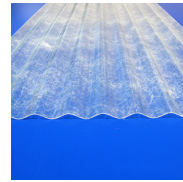
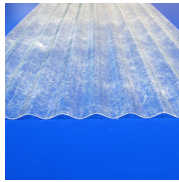
(/FRPCORR600CLR26X192)

**6 Oz Clear Corrugated Fiberglass
26" X 192" Sheet
(/FRPCORR600CLR26X192)**

Super 600 6 oz. Clear #700, 26" x 192",
2-1/2" x 1/2" Profile Fiberglass Sheet.
Commercial Grade Material.

*****This material contains visible fibers
and is not optically transparent*****

SPECIAL ORDER PLEASE CONTACT
US FOR PRICE/AVAILABILITY: 1-800-
474-3688 (tel:+1-800-474-3688) or
info@eplastics.com
(mailto:info@eplastics.com)



(/FRPCORR800CLR26X96)

(/8-oz-Clear-Corrugated-Fiberglass-52-x-96-Sheet)

**8 Oz Clear Corrugated Fiberglass
26" X 96" Sheet
(/FRPCORR800CLR26X96)**

Super 800 8 oz. Clear #501 26" x 96", 2-1/2" x 1/2" Profile Fiberglass Sheet. Commercial Grade Material.

*****This material contains visible fibers and is not optically transparent*****

*****Please select option D-Sheets up to 48x96 for shipping during checkout*****

BUY NOW >>
(FRPCORR800CLR26X96)

- 1 – 9 \$80.01
- 10 – 24 \$72.08
- 25 – 49 \$65.59
- 50 – 99 \$60.19
- 100 + \$55.50

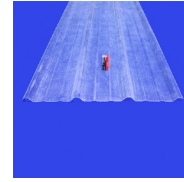
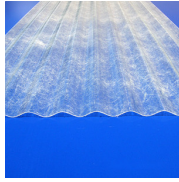
**8 Oz Clear Corrugated Fiberglass
52" X 96" Sheet (/8-Oz-Clear-Corrugated-Fiberglass-52-X-96-Sheet)**

8-oz. clear # 501 corrugated fiberglass sheet 52" x 96", 2-1/2" x 1/2" Profile Fiberglass Sheet. Commercial Grade Material.

*****This material contains visible fibers and is not optically transparent*****

BUY NOW >> (8-oz-Clear-Corrugated-Fiberglass-52-x-96-Sheet)

- 1 – 9 \$160.00
- 10 – 24 \$144.14
- 25 – 49 \$131.17
- 50 – 99 \$120.36
- 100 + \$110.99



(/FRPCORR800CLR26X144)

(/fiberglass/building-products/r-panels/FRPRPANELCLR37-75X96)

**8 Oz Clear Corrugated Fiberglass
26" X 144" Sheet
(/FRPCORR800CLR26X144)**

Super 800 8 oz. Clear #501 26" x 144", 2-1/2" x 1/2" Profile Fiberglass Sheet. Commercial Grade Material.

*****This material contains visible fibers and is not optically transparent*****

BUY NOW >>
(FRPCORR800CLR26X144)

- 1 – 9 \$119.99
- 10 – 24 \$108.10
- 25 – 49 \$98.37
- 50 – 99 \$90.26
- 100 + \$83.24

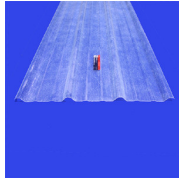
**FRP R-Panel 162GP Clear 8-Oz.
37.75" X 96"
(/Fiberglass/Building-Products/R-
Panels/FRPRPANELCLR37-
75X96)**

FRP R-Panel 162GP Clear #501 8-oz. 37.75" x 96" fiberglass sheet

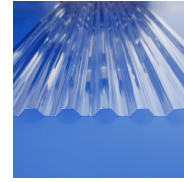
*****NON-RETURNABLE ***This material contains visible fibers and is not optically transparent*****

BUY NOW >> (FRPRPANELCLR37-75X96)

- 1 – 9 \$178.33
- 10 – 24 \$160.66
- 25 – 49 \$146.20
- 50 – 99 \$134.15
- 100 + \$123.71



(/fiberglass/building-products/r-panels/FRPRPANELCLR37-75X144)



(/polycarbonate/building-products/greca/PCCORRCLR26X96)

FRP R-Panel 162GP Clear 8-Oz. 37.75" X 144"
(/Fiberglass/Building-Products/R-Panels/FRPRPANELCLR37-75X144)

FRP R-Panel 162GP Clear #501 8-oz. 37.75" x 144" Thick Fiberglass Sheet. Commercial Grade Material.

*****This material contains visible fibers and is not optically transparent*****

BUY NOW >> (FRPRPANELCLR37-75X144)

- 1 – 9 \$178.33
- 10 – 24 \$160.66
- 25 – 49 \$146.20
- 50 – 99 \$134.15
- 100 + \$123.71

0.031" X 26" X 96" Clear Greca Corrugated Sheet
(/Polycarbonate/Building-Products/Greca/PCCORRCLR26X96)

0.031" x 26" x 96" clear greca corrugated polycarbonate sheet

*****Please select option D-Sheets up to 48x96 for shipping during checkout*****

BUY NOW >> (PCCORRCLR26X96)

- 1 – 9 \$41.94
- 10 – 24 \$37.78
- 25 – 49 \$34.38
- 50 – 99 \$31.55
- 100 + \$29.09



(/polycarbonate/building-products/greca/PCCORRCLR26X144)

**0.031" X 26" X 144" Clear Greca
Corrugated Sheet
(/Polycarbonate/Building-
Products/Greca/PCCORRCLR26X144)**

0.031" x 26" x 144" clear greca
corrugated polycarbonate sheet

BUY NOW >> (PCCORRCLR26X144)

1 – 9 \$62.94

10 – 24 \$56.70

25 – 49 \$51.60

50 – 99 \$47.34

100 + \$43.66