

# DHDC 22-8001

## APPROVAL DOCUMENT – POST AT WORK LOCATION

CITY OF DETROIT  
HISTORIC DISTRICT COMMISSION

2 WOODWARD, SUITE 808  
DETROIT, MICHIGAN 48226

9/20/22

### CERTIFICATE OF APPROPRIATENESS

Kathleen Schultz  
601 Lodge Dr.  
Detroit, MI 48214

**RE: Application Number 22-8001; 601 Lodge; Berry Subdivision Historic District**

Dear Applicant,

At the Regular Meeting that was held on September 14, 2022, the Detroit Historic District Commission (“DHDC”) reviewed the above-referenced application. Pursuant to Section 5(1) of the Michigan Local Historic District Act, as amended, being MCL 399.205 (1) and Sections 21-2-73/21-2-78 of the 2019 Detroit City Code; the DHDC hereby issues a Certificate of Appropriateness (“COA”) for the following work, effective on September 20, 2022, as it meets the Secretary of Interior’s Standards for Rehabilitation and the district’s Elements of Design:

- ***Demolition of existing garage (work complete) and concrete pad***
- ***Erect new 20’x22’ garage (440SF) per the attached drawings and detail descriptions***
- ***Resurface existing driveway per the attached drawings and description.***

*The Certificate of Appropriateness is issued with the following conditions:*

- ***Update the proposed the drawings to reflect the changes of the siding material to wood, lap-siding and the colors noted per Color System D of the HDC color package.***
- ***The vinyl window replaced with a more appropriate material, such as wood or aluminum-clad wood and reflected in the updated drawings.***
- ***Downspouts and gutters added to the garage and reflected in the updated drawings.***
- ***HDC Staff receive a final plan showing product and detail description of the above work before installation.***

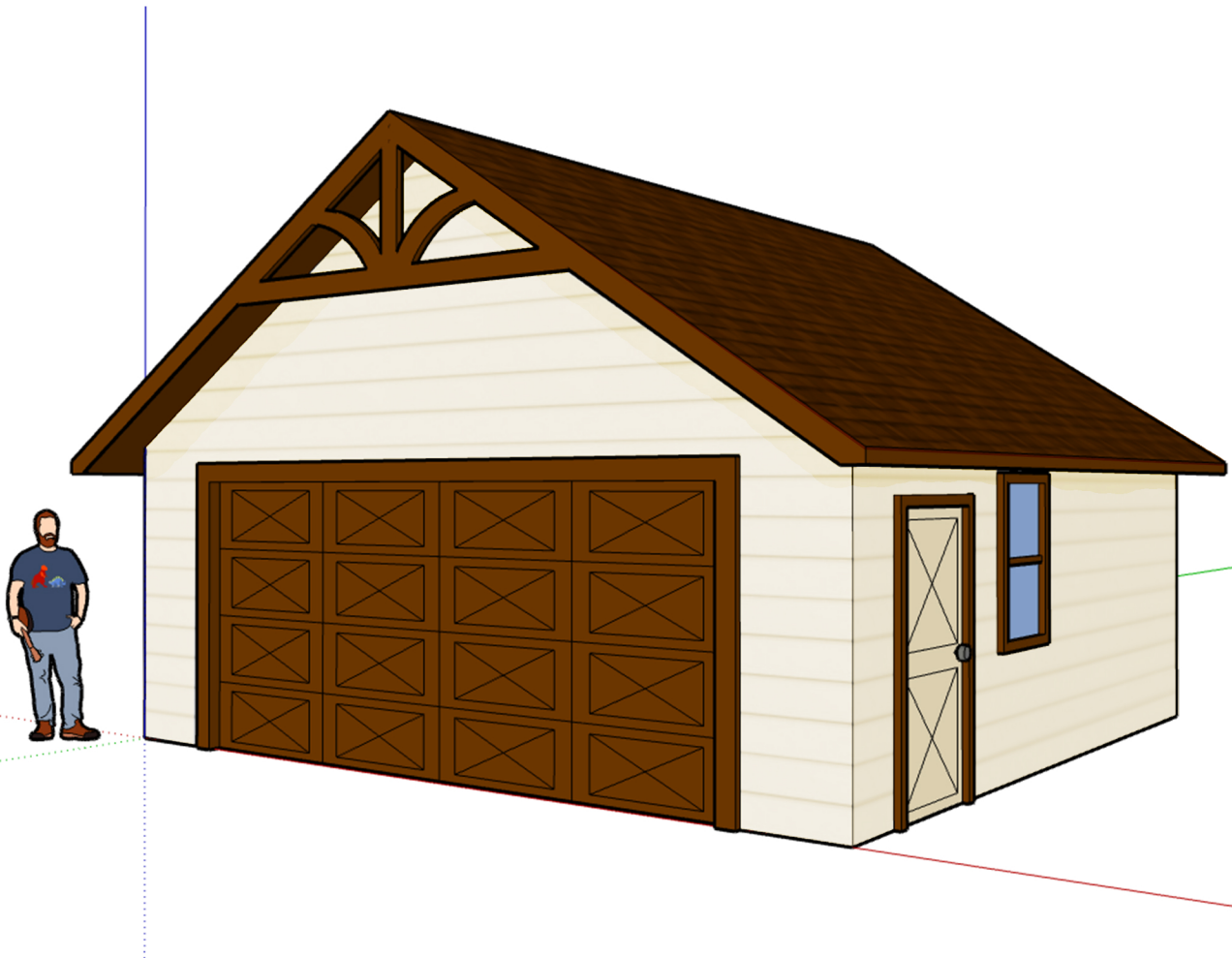
Please retain this COA for your files and post it at the subject property until work is complete. It is important to note that approval by the DHDC does not waive the applicant's responsibility to comply with any other applicable ordinances or statutes. If you have any questions regarding the foregoing, please contact staff at 313-224-1762 or [hdc@detroitmi.gov](mailto:hdc@detroitmi.gov).

For the Commission:



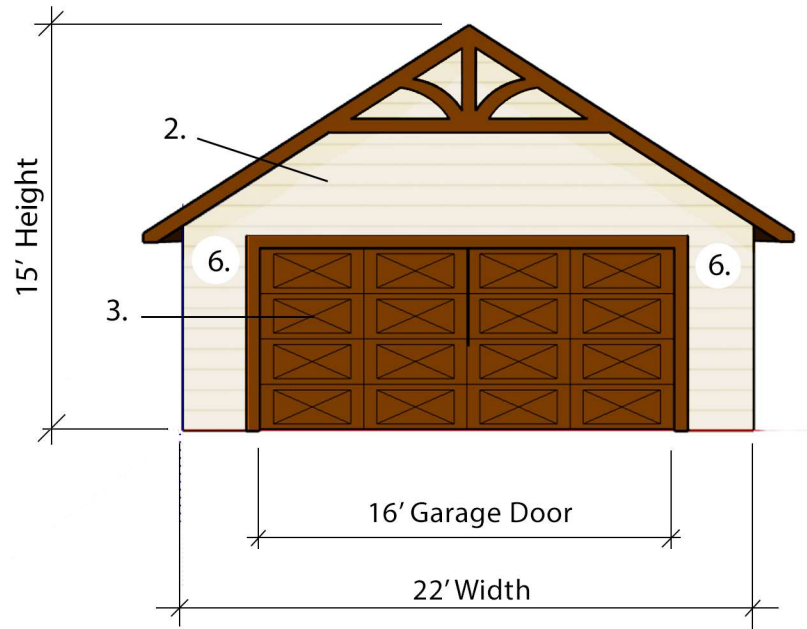
Daniel Rieden  
Detroit Historic District Commission

# 601 Lodge Drive Garage Plan

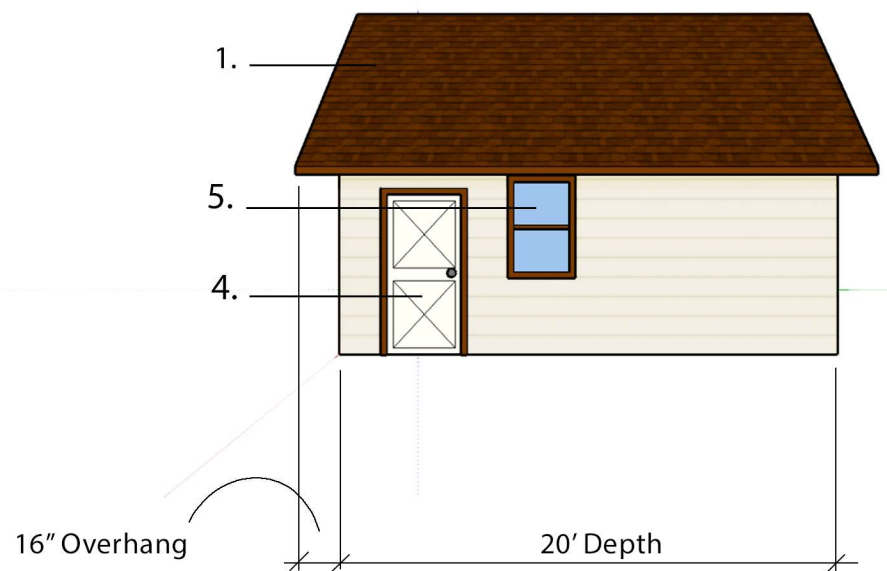


## MATERIALS

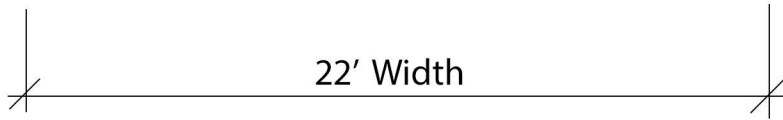
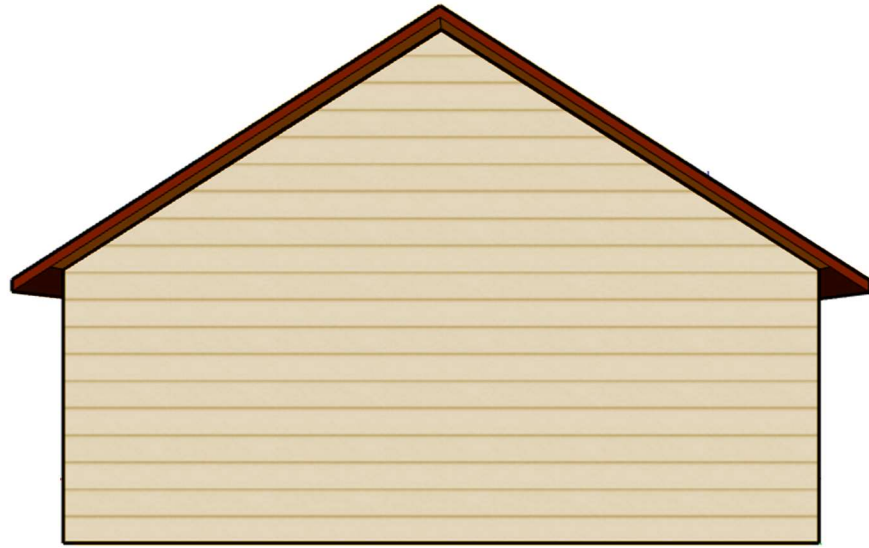
1. 30 Year Shingle
2. Vinyl Siding
3. Clopay 16' Door
4. Jeld-Wen Steel Door
5. Pella Window
6. Outdoor Sconce x2



East Elevation



North Elevation



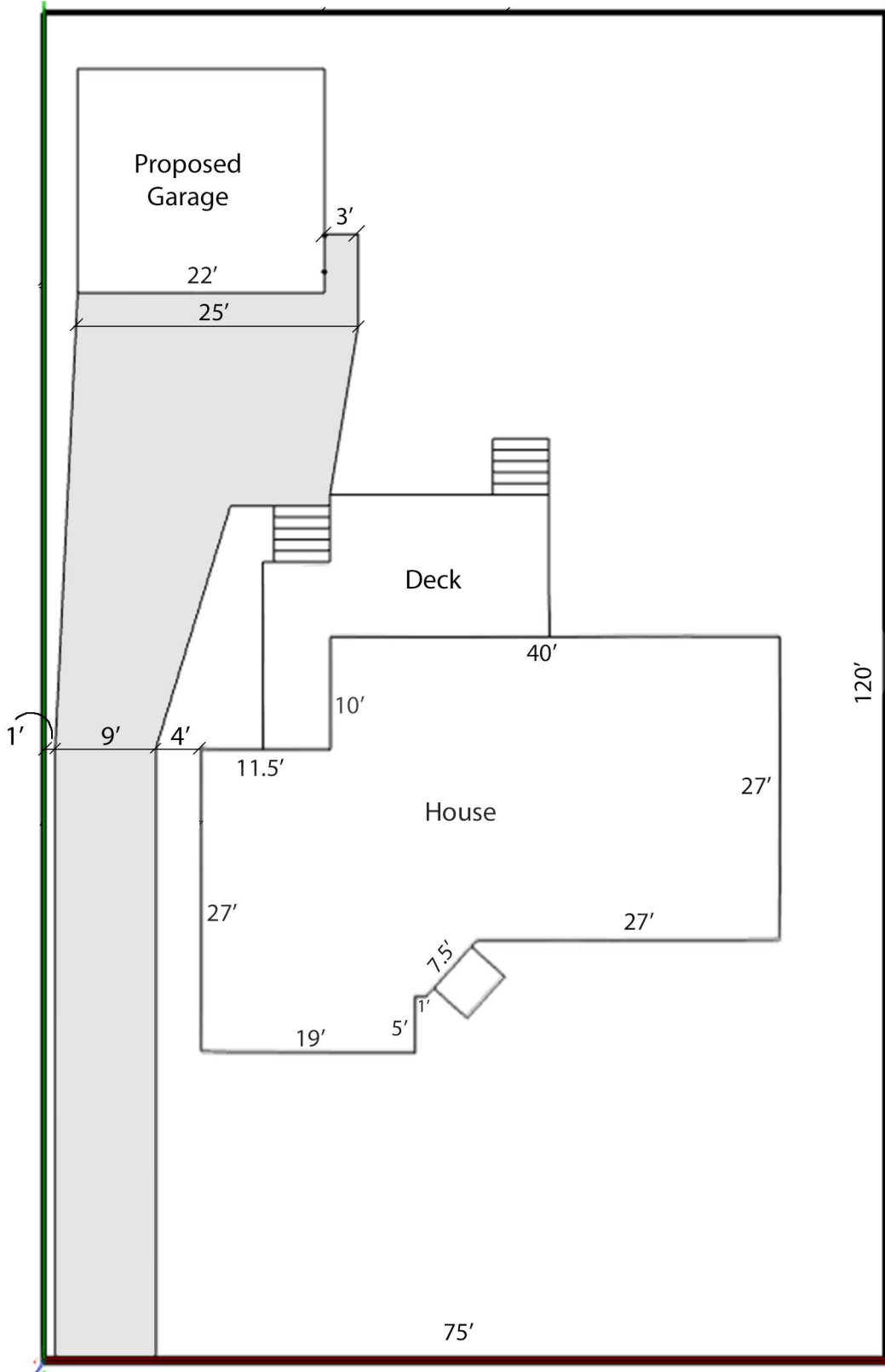
22' Width  
West Elevation



20' Depth  
South Elevation



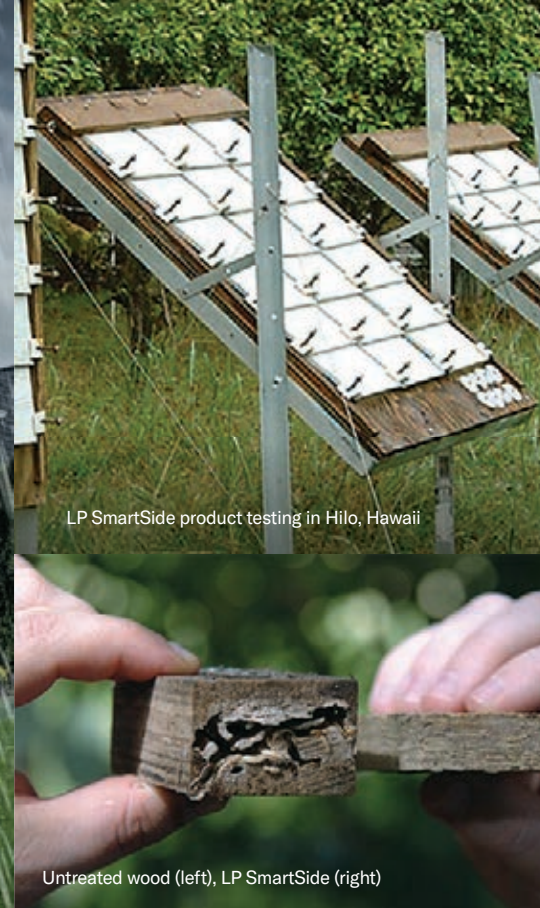
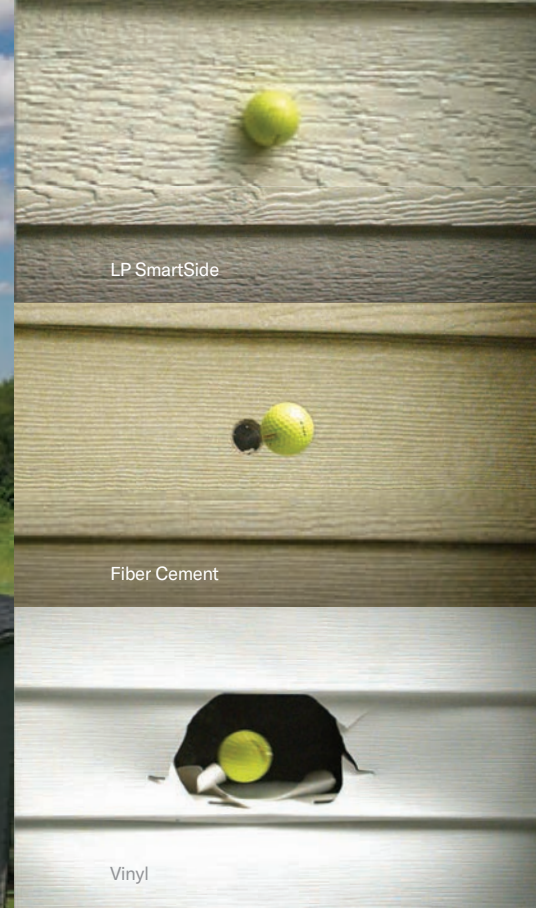
Back of Lot



601 Lodge Driveway



# BECAUSE STRENGTH IS MAKE OR BREAK



ENGINEERED TO IMPRESS

## A NATURAL DEFENSE AGAINST NATURE

All LP® SmartSide® products are treated to the core through our proprietary SmartGuard® process. With four components of protection, the SmartGuard process adds strength and helps LP SmartSide products withstand impacts, freeze/thaw cycles, high humidity, fungal decay and more.

See more about how LP SmartSide products are made at [YouTube.com/LPSmartSide](https://www.youtube.com/LPSmartSide).

## OUTSTANDING IMPACT RESISTANCE

Testing shows that LP SmartSide strand products resist impact better than vinyl and fiber cement siding, which means they can stand up better against everything from everyday bumps to airborne storm debris. And because it doesn't break as easily as fiber cement siding, LP SmartSide strand siding is also easier to handle and install, and results in less waste.

## HAIL AND WIND RESISTANCE

Third-party test results demonstrate that LP SmartSide lap siding resisted hail damage better than fiber cement and vinyl. In fact, the LP SmartSide warranty covers impacts from hail up to 1.75" in diameter. LP SmartSide lap siding is also designed to withstand tough storms with wind gusts of up to 200 miles per hour. Refer to ESR-1301, Table 2B, Lap Siding.

## RESISTANCE TO FUNGAL DECAY AND TERMITES

Since 1996, LP SmartSide strand substrate siding has undergone brutal testing in Hilo, Hawaii. An average temperature of more than 70 degrees, high levels of humidity, and almost 170 inches of annual rainfall make Hilo's climate the perfect breeding ground for termites, moisture and fungal decay. Yet our Exterior Exposure Program continues to validate that LP SmartSide siding performs over time.

## FOUR COMPONENTS OF PROTECTION

LP's proprietary SmartGuard® manufacturing process ensures that every LP SmartSide Trim & Siding product is treated with an advanced formula of adhesive resins, water-resistant waxes and zinc borate, after which a water-resistant, resin-saturated overlay is bonded to the product. The result: four components of protection against water damage, termites and fungal decay.



## BACKED BY STRONG WARRANTIES

LP has your back with an industry-leading, transferrable limited warranty for LP® SmartSide® products: a 5-year 100% labor and material replacement warranty with a 50-year prorated limited warranty. LP® SmartSide® ExpertFinish® Trim & Siding products include an additional 15-year finish warranty.

For complete warranty details visit [LPCorp.com/Literature](https://www.LPCorp.com/Literature)





## ADVANCED DURABILITY FOR LONGER LASTING BEAUTY®

Siding plays a big role in a home's curb appeal. That's why LP® SmartSide® Trim & Siding is built to last and designed to make any home's design vision come to life. Because of its engineered wood strand technology and variety of textures, styles and colors, LP SmartSide products elevate any structure, from traditional homes to modern masterpieces. LP SmartSide products are also available in ExpertFinish® color to add another element of versatile design to your projects.

**CEDAR**

**SMOOTH**



**CEDAR TEXTURE LAP**



**SMOOTH FINISH LAP**



## CEDAR TEXTURE LAP

### THE BOLD LOOK OF CEDAR WITHOUT MANY OF THE WORRIES

- One of the most durable lap siding options on the market today
- 16' length can result in faster installation
- May create fewer seams than traditional 12' siding
- Pre-primed for exceptional paint adhesion
- Self-aligning SmartLock™ option eliminates the need to measure and set lap reveal; eliminating this step in the process is likely to speed up the installation process
- APA-certified lap siding
- Treated engineered wood strand substrate

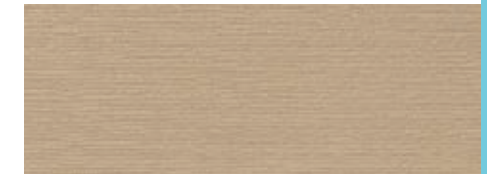


Cedar Texture

## SMOOTH FINISH LAP

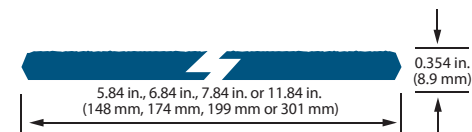
### SMOOTH APPEARANCE, ADVANCED DURABILITY OF ENGINEERED WOOD

- Holds up in extreme weather, including moisture, hail, freeze/thaw cycles, and up to 200 mph wind gusts
- Treated with the SmartGuard® process for superior protection against the weather, fungal decay and termites
- 16' length can result in faster installation and fewer seams
- Pre-primed for exceptional paint adhesion
- Backed by an industry-leading 5/50-year limited warranty
- APA-certified lap siding
- Treated engineered wood strand substrate

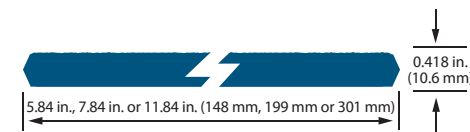


Smooth Finish

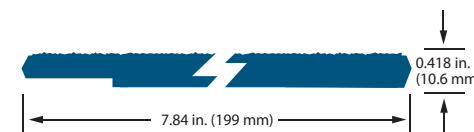
#### 38 SERIES CEDAR TEXTURE LAP



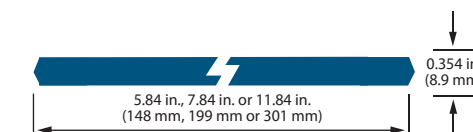
#### 76 SERIES CEDAR TEXTURE LAP



#### 76 SERIES SMARTLOCK CEDAR TEXTURE LAP



#### 38 SERIES SMOOTH FINISH LAP



DESCRIPTION	LENGTH	ACTUAL WIDTH	THICKNESS	PID NUMBER	WEIGHT
38 Series Cedar Texture Lap	12 ft. (144 in.)(3.7 m)	7.84 in. (199 mm)	0.354 in. (8.9 mm)	28869	1.5 PSF
	16 ft. (192 in.)(4.9 m)	5.84 in. (148 mm)	0.354 in. (8.9 mm)	25796	1.5 PSF
	16 ft. (192 in.)(4.9 m)	6.84 in. (174 mm)	0.354 in. (8.9 mm)	40610	1.5 PSF
	16 ft. (192 in.)(4.9 m)	7.84 in. (199 mm)	0.354 in. (8.9 mm)	25797	1.5 PSF
	16 ft. (192 in.)(4.9 m)	11.84 in. (301 mm)	0.354 in. (8.9 mm)	25799	1.5 PSF
76 Series Cedar Texture Lap	16 ft. (192 in.)(4.9 m)	5.84 in. (148 mm)	0.418 in. (10.6 mm)	25785 (Discontinued)	1.5 PSF
	16 ft. (192 in.)(4.9 m)	7.84 in. (199 mm)	0.418 in. (10.6 mm)	25786	1.5 PSF
	16 ft. (192 in.)(4.9 m)	11.84 in. (301 mm)	0.418 in. (10.6 mm)	25787	1.5 PSF
76 Series SmartLock Cedar Texture Lap	16 ft. (192 in.)(4.9 m)	7.84 in. (199 mm)	0.418 in. (10.6 mm)	30317	1.5 PSF

DESCRIPTION	LENGTH	ACTUAL WIDTH	THICKNESS	PID NUMBER	WEIGHT
38 Series Smooth Finish Lap	16 ft. (192 in.)(4.9 m)	5.84 in. (148 mm)	0.354 in. (8.9 mm)	41338	1.5 PSF
	16 ft. (192 in.)(4.9 m)	7.84 in. (199 mm)	0.354 in. (8.9 mm)	41339	1.5 PSF
	16 ft. (192 in.)(4.9 m)	11.84 in. (301 mm)	0.354 in. (8.9 mm)	41340	1.5 PSF

FREE IN-STORE PICKUP Over one million online items eligible. >



You're shopping  
**Madison Heig...**   
**OPEN** until 11 pm

Delivering to  
**48071** 30 year shingles



**Cart** | 0 items

Home / Building Materials / Roofing / Roof Shingles

Internet #100658124 Model #0601395 Store SKU #777382

282

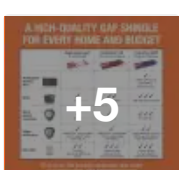
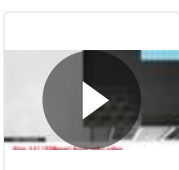
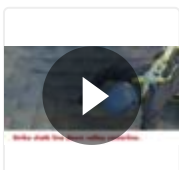
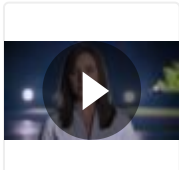
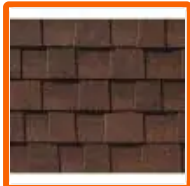
GAF

## Timberline Natural Shadow Hickory Algae Resistant Architectural Shingles (33.3 sq. ft. per Bundle) (21-Pieces)

★★★★★ (237) Questions & Answers (33)

Live Chat

Feedback



Hover Image to Zoom



**Henry 209XR Extreme Rubberized Wet Patch Roof Cement Leak Repair - 0.90...**

★★★★★ (799)

**\$47<sup>37</sup>**

**Add to Cart**



**Henry 887 Tropi-Cool 4.75 Gal. 100% Silicone White Roof Coating**

★★★★★ (1049)

**\$435<sup>57</sup>**

**Add to Cart**



**Henry 4.75 Gal. Acrylic Reflective Elastomeric Roof Coating**

★★★★★ (442)

**\$98<sup>79</sup>**

**Add to Cart**



**Henry Elasto**

★★★

**\$120**

**Live Chat**

**Feedback**

Specifications

**Dimensions**

Coverage Area (sq. ft.)	33.3 ft <sup>2</sup>
Product Length (in.)	39.38 in
Product Thickness (in.)	2.4 in
Product Width (in.)	13.25 in

**Details**

Color Family	Hickory
Color/Finish	Hickory
Features	Algae Resistant,High Wind Resistant,Stainguard Protection
Fire Rating (UL 790)	Class A
Material	Asphalt
Number of bundles per 100 sq. ft. (Square)	3
Number of pieces per bundle	21
Requirements	Attic Ventilation   Underlayment



Requirements	Also Ventilation, Encapsulation
Roofing Product Type	Architectural Shingle
Shingle Exposure (in.)	5.625
Shingle Type	Architectural Shingle
Warranty	Lifetime Limited Warranty
Weight Per Bundle (lb.)	70

How can we improve our product information? Provide feedback.

### Customers Who Viewed This Also Viewed



**GAF Timberline HDZ Charcoal** Algae Resistant Laminated High Definition Shingles (33.33 sq. ft. per Bundle) (21-Pieces)

★★★★★ (6726)

**\$34<sup>50</sup>** /bundle



**GAF Royal Sovereign** Charcoal Algae Resistant 3-Tab Roofing Shingles (33.33 sq. ft. per. Bundle) (26-pieces)

★★★★★ (461)

**\$31<sup>50</sup>** /bundle



**GAF Seal-A-Ridge Charcoal** Hip and Ridge Cap Roofing Shingles (25 lin. ft. per Bundle) (45-Pieces)

★★★★★ (6)

**\$54<sup>98</sup>** /bundle

**GA**  
and  
Shi

★

**\$4**

Live Chat

Feedback

### Questions & Answers

**132** Questions

Search Questions & Answers



Ask a Question





You're shopping  
**Madison Heig...**   
**OPEN** until 11 pm

Delivering to  
**48071**

Search



Cart | 0 items

Home / Doors & Windows / Garage Doors

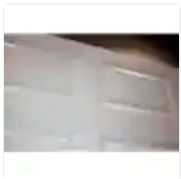
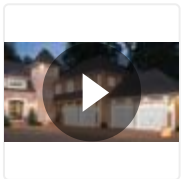
Internet #204598371 Model #HDB\_SW\_SOL

1.1k

Clopay

## Classic Collection 16 ft. x 7 ft. Non-Insulated Solid White Garage Door

★★★★★ (109) Questions & Answers (143)



Live Chat

Feedback

Hover Image to Zoom

## Specifications

### Dimensions

Garage Door Size	16 ft x 7 ft
Product Depth (in.)	2 in
Product Height (in.)	84 in
Product Width (in.)	192 in

 Live Chat

### Details

Color Family	White
Door Configuration	Double Door
Features	Paintable
Garage Door Collection	Classic
Garage Door Color	White
Garage Door Style	Classic
Included	Instructions
Insulation R-Value	0
Material	Steel
Product Type	Without Windows
Product Weight (lb.)	216 lb
Returnable	90-Day
WindCode Rating	No WindCode Rating

 Feedback

### Warranty / Certifications

Manufacturer Warranty	Paint System - 15 yrs., Windows - 10 yrs., Sections/Delamination - 5 yrs. Hardware/Springs -3
-----------------------	---

How can we improve our product information? Provide feedback.

Customers Who Viewed This Also Viewed



**Clopay** Classic Collection 16 ft. x 7 ft. Non-Insulated Solid White Garage Door

★★★★★ (102)

**\$1026<sup>90</sup>**



**Clopay** Classic Collection 16 ft. x 7 ft. Non-Insulated White Garage Door with Plain Windows

★★★★★ (97)

**\$1493<sup>10</sup>**



**Clopay** Classic Collection 16 ft. x 7 ft. 18.4 R-Value Intellicore Insulated Solid White Garage Door

★★★★★ (307)

**\$2213<sup>40</sup>**

Best



Live Chat

Feedback

Clopay Classic Collection 16 ft. x 7 ft. Non-Insulated Solid White Garage Door

★★★★★

**\$3**

Questions & Answers

**143** Questions

Search Questions & Answers 

**Ask a Question**

## Vinyl Windows and Doors Manufactured by Pella Corporation

### Double-Hung Window - East Region

#### Detailed Product Description

---

#### Frame

- Overall frame depth is [3-1/4" replacement frame with sill adapter and optional head expander] [4-3/16" new construction frame with [integral fin] [with integral fin and J-channel]].
- Frame members are extruded, rigid uPVC.
- Frame members are mitered and heat-fused to provide a fully welded corner assembly.

---

#### Sash

- Sash members are extruded, rigid uPVC.
- Sash members are mitered and heat-fused to provide a fully welded corner assembly.
- Includes an integral extruded sash lift.

---

#### Weather Stripping

- Frame and sash is weatherstripped around the perimeter with a fin-type, pile weatherstripping.

---

#### Glazing System

- Quality float glass complying with ASTM C1036.
- Exterior face-glazed 3/4" sealed insulating glass.
- [Clear] [Advanced Low-E coated [with argon]] [SunDefense™ Low-E coated, [with argon]] [NaturalSun Low-E [with argon]] [bronze, Advanced Low-E coated, [with argon]]; [Clear] [NaturalSun Low-E] [obscure] [tempered].

---

#### Interior/Exterior

- All window frame members have an integral color extruded throughout the profiles.
- All exposed PVC surfaces are smooth, glossy and uniform in appearance.
- Color: [White] [Almond] [Fossil].

---

#### Hardware

- Constant force balances connected to sash with stainless steel spring and concealed within the frame
- Upper and lower sashes are fully operable for ventilation.
- All fasteners are corrosion-resistant material compatible with uPVC.
- Locks are factory-installed, zinc die cast, self-aligning, cam action locks located on the checkrail.
- Two sash locks are installed on units with 29-1/2" or greater frame width.
- Tilt latches are factory installed, zinc die cast and are located on the checkrail of the lower sash and the top rail of the upper sash.
- Factory pre-finished to match interior.

---

#### Screens

- Full-size with black vinyl coated 18/14 mesh fiberglass screen cloth complying with ASTM D 3656 and SMA 1201.
- Set in aluminum frame and fitted to exterior of window.
- Screens for window with frame height ≤ 51-1/2" have one plunger per side, windows with frame height > 51-1/2" have two plungers per side.
- Screens for windows with frame width >39" or frame height > 53-1/2" have a screen spreader bar.

---

#### Optional Products

- Factory applied primed wood jamb extension for [4-9/16"] [6-9/16"] wall depth, available on new construction fin frame units only.
- Grilles-Between-the-Glass
  - Insulating glass contains [3/4"] contoured aluminum grilles permanently installed between two panes of glass.
  - Grilles match color of frame.
- Optional limited opening hardware for field installation available for vent units in extruded vinyl, color to match the unit; nominal 3-3/4" opening.
- Optional window opening control device available for factory or field installation. Device allows window to open less than 4" with normal operation, with a release mechanism that allows the sash to open completely. Complies with ASTM F2090-10.



You're shopping  
**Madison Heig...**   
**OPEN** until 11 pm

Delivering to  
**48071** solid core door



**Cart** | 0 items

[Home](#) / [Doors & Windows](#) / [Exterior Doors](#) / [Front Doors](#) / [Steel Doors](#) / [Steel Doors Without Glass](#)

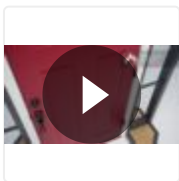
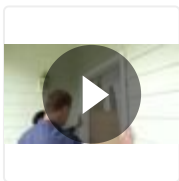
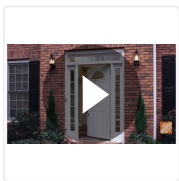
Internet #202036386 Model #THDJW166100317 Store SKU #776781

4.9k

**JELD-WEN**

### 36 in. x 80 in. 6-Panel Primed Premium Steel Front Door Slab

★★★★★ (171) [Questions & Answers \(208\)](#)



Hover Image to Zoom

**Live Chat**

**Feedback**

# \$169<sup>00</sup>



Pay \$144.00 ~~\$169~~ when you open a new card. [i](#)  
Apply for a Home Depot Consumer Card

## Madison Heights Store


✓ 14 in stock Aisle 30, Bay 013 [Text to Me](#)

### How to Get It

Delivering to: 48071 | [Change](#)

 ✓  
**Store Pickup**  
Pickup Today  
**FREE**

  
**Ship to Home**  
Get it by **Fri, Sep 30**  
Standard Delivery

  
**Scheduled Delivery**  
As soon as **Tomorrow**  
**\$79.00**

14 in stock at **Madison Heights**  
[Check Nearby Stores](#)



## Have Questions? We're Here to Help.

Speak to a Virtual Associate about Doors or Windows today.  
Available from 9 am - 8 pm EST.

Request Appointment

Or call 1-833-HD-APRON (1-833-432-7766) [i](#) What to Expect

- 1 +

 **Add to Cart**

— or —

Buy now with **PayPal**

## Frequently Bought Together

**Top Rated**

[Live Chat](#)  
[Feedback](#)



**JELD-WEN** 36 in. x 80 in. Left-Hand 3/4 Lite Harris Decorative Glass Hazelnut Stain...

**\$3340<sup>00</sup>**

[Add to Cart](#)



**JELD-WEN** 36 in. x 80 in. Left-Hand 6 Lite Clear Glass Black Painted Fiberglass Prehung...

★★★★★ (1)

**\$1746<sup>49</sup>**

[Add to Cart](#)



**JELD-WEN** 36 in. x 80 in. Right-Hand 3/4 Lite Harris Decorative Glass Hazelnut...

**\$3674<sup>00</sup>**

[Add to Cart](#)

**JELD-**  
Hand ( )  
Hazelr

★★★

**\$3**

[Live Chat](#)

[Feedback](#)

## Specifications

### Dimensions

Actual Door Height (in.)	79
Actual Door Thickness (in.)	1.75
Actual Door Width (in.)	36
Door Height (in.)	79 in
Door Thickness (in.)	1.75
Door Width (in.)	36
Fits Opening Height (in.)	79 to 79 7/8
Fits Opening Width (in.)	35 3/4 to 36 3/8
Nominal Door Height (in.)	79 in
Nominal Door Thickness (in.)	2 in
Nominal Door Width (in.)	36 in

### Details



Bore Type	Double Bore
Color Family	Off White
Color/Finish	Primed
Door Configuration	Single Door
Door Handing	Universal/Reversible
Door Style	Traditional
Door Type	Exterior Slab
Features	Lockset Bore (Double Bore)
Finish Type	Primed
Included	Instructions
Material	Steel
Panel Type	6 Panel
Product Weight (lb.)	44.77 lb
Returnable	90-Day
Suggested Application	Front

 Live Chat

 Feedback

## Warranty / Certifications

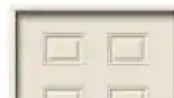
Energy Star Qualified	North-Central,Northern,South-Central,Southern
Fire rating	None
Manufacturer Warranty	10 Year Limited

How can we improve our product information? Provide feedback.

## Customers Who Viewed This Also Viewed



Best Seller



Top

FREE IN-STORE PICKUP Over one million online items eligible. >



You're shopping  
**Madison Heig...**   
**OPEN** until 11 pm

Delivering to  
**48071**

outdoor garage light



**Cart** | 0 items

Home Decor

Furniture

Wall Decor

Small Kitchen Appliances

Kitchenware & Tableware

Bedding & Bath

**Lighting**

Window Treatments

Shop By Room

Home / Lighting / Outdoor Lighting / Outdoor Wall Lighting / Outdoor Sconces

Internet #204294429 Model #HB7251MA-292 Store SKU #592082

1.5k

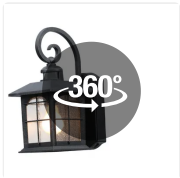
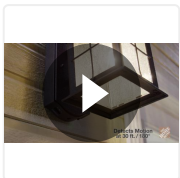
Home Decorators Collection

## Brimfield 14.2 in. Aged Iron 1-Light Outdoor Wall Lamp with Clear Seedy Glass Shade and 220° Motion Sensing

★★★★★ (342) Questions & Answers (56)

Live Chat

Feedback



## Dimensions

Product Depth (in.)	9.5
Product Height (in.)	14.2
Product Width (in.)	7 in

## Details

Compatible Bulb Type	Incandescent,LED
Detection Range (ft.)	30
Exterior Lighting Product Type	Outdoor Sconce
Fixture Color/Finish	Aged Iron
Fixture Material	Metal
Included	Hardware Included,Motion Sensor
Light Bulb Base Code	E26
Light Bulb Type Included	No Bulbs Included
Light Direction	Down,Up
Maximum Bulb Wattage	100 W
Maximum Wattage (watts)	0
Number of Lights	1 Light
Outdoor Lighting Features	Adjustable Detection Sensitivity,Motion Sensing
Package Quantity	1
Power Type	Hardwired
Product Size	Medium
Product Style	Classic
Product Weight (lb.)	4.01
Recommended Light Bulb Shape Code	A19

Live Chat

Feedback

Returnable	90-Day
Sconce Type	Lantern
Shade Material	Glass
Style	Mission
UL Listing	1-UL Listed
Voltage Type	Line Voltage

 Live Chat

## Warranty / Certifications

Certifications and Listings	UL Certified
Manufacturer Warranty	3-Year Limited Warranty

 Feedback

## Product Overview

HOME  
DECORATORS  
COLLECTION™

### NUMBER OF LIGHTS

1



### SCONCE TYPE

**WALL LANTERN**