



February 16, 2022

NOTICE OF DENIAL

Shane Overby
Artisan Contracting LLC
535 Griswold, Suite 111 - 195
Detroit MI 48226

RE: Application Number 22-7667; 2130 Michigan Avenue; Corktown Historic District

Dear Mr. Overby,

At the Regular Meeting that was held on February 9, 2022, the Detroit Historic District Commission (“DHDC”) reviewed the above-referenced application. Pursuant to Section 5(1) and 9(1) of the Michigan Local Historic District Act, as amended, being MCL 399.205 (1), MCL 399.209 (9) and Sections 21-2-78 and 21-2-80 of the 2019 Detroit City Code; the DHDC hereby issues a Denial for the following work, effective on February 16, 2022, as it will be inappropriate according to the Secretary of Interior’s Standards for Rehabilitation and the district’s Elements of Design:

The replacement of the limestone details on the outer brick piers, installation of a terrazzo stoop at the main entry, and installation of a reclaimed cast iron column between the two entry doors, per the submitted documents and drawings.

The reasons for the denial are a failure to meet the following specific Standards or Elements:

- *Standard 2 -- The historic character of a property shall be retained and preserved. The removal of historic materials or alteration of features and spaces that characterize a property shall be avoided.*
- *Standard 3 -- Each property shall be recognized as a physical record of its time, place, and use. Changes that create a false sense of historical development, such as adding conjectural features or architectural elements from other buildings, shall not be undertaken.*
- *Standard 5 -- Distinctive features, finishes, and construction techniques or examples of craftsmanship that characterize a property shall be preserved.*
- *Standard 6 -- Deteriorated historic features shall be repaired rather than replaced. Where the severity of deterioration requires replacement of a distinctive feature, the new feature shall match the old in design, color, texture, and other visual qualities and, where possible, materials. Replacement of missing features shall be substantiated by documentary, physical, or pictorial evidence.*

The application may be resubmitted for the Historic District Commission's review when suggested changes have been made that address the cited reasons for denial, if applicable.

Please be advised that, in accordance with MCL 399. 211 and Section 21-2-81 of the 2019 Detroit City Code, an applicant aggrieved by a decision of the DHDC may file an appeal with the State Historic Preservation Review Board. Within sixty (60) days of your receipt of this notice, an appeal may be filed with:

Jon Stuckey, Michigan Department of Attorney General
2nd Floor, G. Mennen Williams Building
525 West Ottawa Street
P.O. Box 30754
Lansing, MI 48909

Phone: 517-335-0665
E-mail: stuckeyj@michigan.gov

If you have any questions regarding the foregoing, please contact staff at 313-224-1762 or hdc@detroitmi.gov.

For the Commission:



Audra Dye
Detroit Historic District Commission

DHDC 22-7667

APPROVAL DOCUMENT – POST AT WORK LOCATION



CITY OF DETROIT
HISTORIC DISTRICT COMMISSION

2 WOODWARD, SUITE 808
DETROIT, MICHIGAN 48226

February 16, 2022

CERTIFICATE OF APPROPRIATENESS

Shane Overby
Artisan Contracting LLC
535 Griswold, Suite 111 - 195
Detroit MI 48226

**RE: Application Number 22-7667; 2130 Michigan Avenue; Corktown Historic District
Project Scope: Replace Storefront System**

Dear Mr. Overby,

At the Regular Meeting that was held on February 9, 2022, the Detroit Historic District Commission (“DHDC”) reviewed the above-referenced application. Pursuant to Section 5(1) of the Michigan Local Historic District Act, as amended, being MCL 399.205 (1) and Sections 21-2-73/21-2-78 of the 2019 Detroit City Code; the DHDC hereby issues a Certificate of Appropriateness (“COA”) for the following work, effective on February 16, 2022, as it meets the Secretary of Interior’s Standards for Rehabilitation and the district’s Elements of Design:

Removal of the existing storefront, including all associated trim, windows, doors and knee walls; cleaning/paint removal from existing brick and stone; erection of new storefront, including wood and glass custom doors, wood (with wood exterior) casement and non-operable transom windows, wood tongue-and-groove trim and wood knee wall – all painted black – per the submitted documents, drawings and product data.

With the condition that:

- The elevations shall be corrected to reflect the approved scope of work, including the method of paint removal. The revised drawings will be submitted for staff review.*

Please retain this COA for your files and post it at the subject property until work is complete. It is important to note that approval by the DHDC does not waive the applicant's responsibility to comply with any other applicable ordinances or statutes. If you have any questions regarding the foregoing, please contact staff at 313-224-1762 or hdc@detroitmi.gov.

For the Commission:

Audra Dye
Detroit Historic District Commission



R. CAMPAU

ZONE 206
SHOW UP FOR VEHICLE PAY
Park Detroit
.US
PAY HERE

PAY HERE



2126



Fair House

230

DOOR
NO. 1000
1000 N. 1000
1000
1000 N. 1000
1000 N. 1000

1000

2130 Michigan Ave

Sugar House Facade

Scope of Work Exterior

- Remove areas of existing trim as noted on plans
- Remove existing windows and 2 entry doors
- Remove existing knee wall below windows
- Install new casement windows and non-operable transom windows
- Install new wood and glass custom doors x2
- Install new tongue and groove in vertical layout as noted on plans
- Paint exterior black to match existing

The existing façade has deteriorated beyond repair. The windows have suffered from water intrusion and the wood frames are rotten. The owner has also expressed interest in having operable windows for summertime use and to help with Covid protocols. The windows will be replaced with JeldWen Sitaline wood casement windows and fixed transom windows. The 2 new doors will be custom built wood doors.



ARTISAN CONTRACTING LLC

313.909.0477. BUILDERS LICENSE #2101207828



ARTISAN CONTRACTING LLC

313.909.0477. BUILDERS LICENSE #2101207828



ARTISAN CONTRACTING LLC

313.909.0477. BUILDERS LICENSE #2101207828



ARTISAN CONTRACTING LLC

313.909.0477. BUILDERS LICENSE #2101207828



ARTISAN CONTRACTING LLC

313.909.0477. BUILDERS LICENSE #2101207828



ARTISAN CONTRACTING LLC

313.909.0477. BUILDERS LICENSE #2101207828



ARTISAN CONTRACTING LLC

313.909.0477. BUILDERS LICENSE #2101207828



CONTRACTOR NOTE
 ALL CONTRACTORS (GENERAL CONTRACTOR, SUB-CONTRACTORS, MEMBERS OR AGENTS OF EITHER OR BOTH) ARE TO VERIFY AND COORDINATE ALL CONDITIONS, DIMENSIONS, QUANTITIES AND DETAILS, STATED OR NOT, WITHIN THESE DRAWINGS AND WITHIN THE SPECIFICATIONS BEFORE COMMENCING WITH THE WORK. IF A DIMENSIONAL ERROR OR CONFLICT OCCURS BETWEEN THESE DRAWINGS, THE SPECIFICATIONS OR THE EXISTING /PROPOSED CONDITIONS, IT SHALL BE BROUGHT TO THE IMMEDIATE ATTENTION OF THE ARCHITECT BEFORE PROCEEDING WITH THE WORK. ANY PARTY (GENERAL CONTRACTOR, SUB-CONTRACTORS, MEMBERS OR AGENTS OF EITHER OR BOTH) WHO FAIL TO DO SO TAKE FULL RESPONSIBILITY OF ANY ERRORS, CONFLICTS, SCHEDULE AND COST IMPLICATIONS.

STRUCTURAL ENGINEER

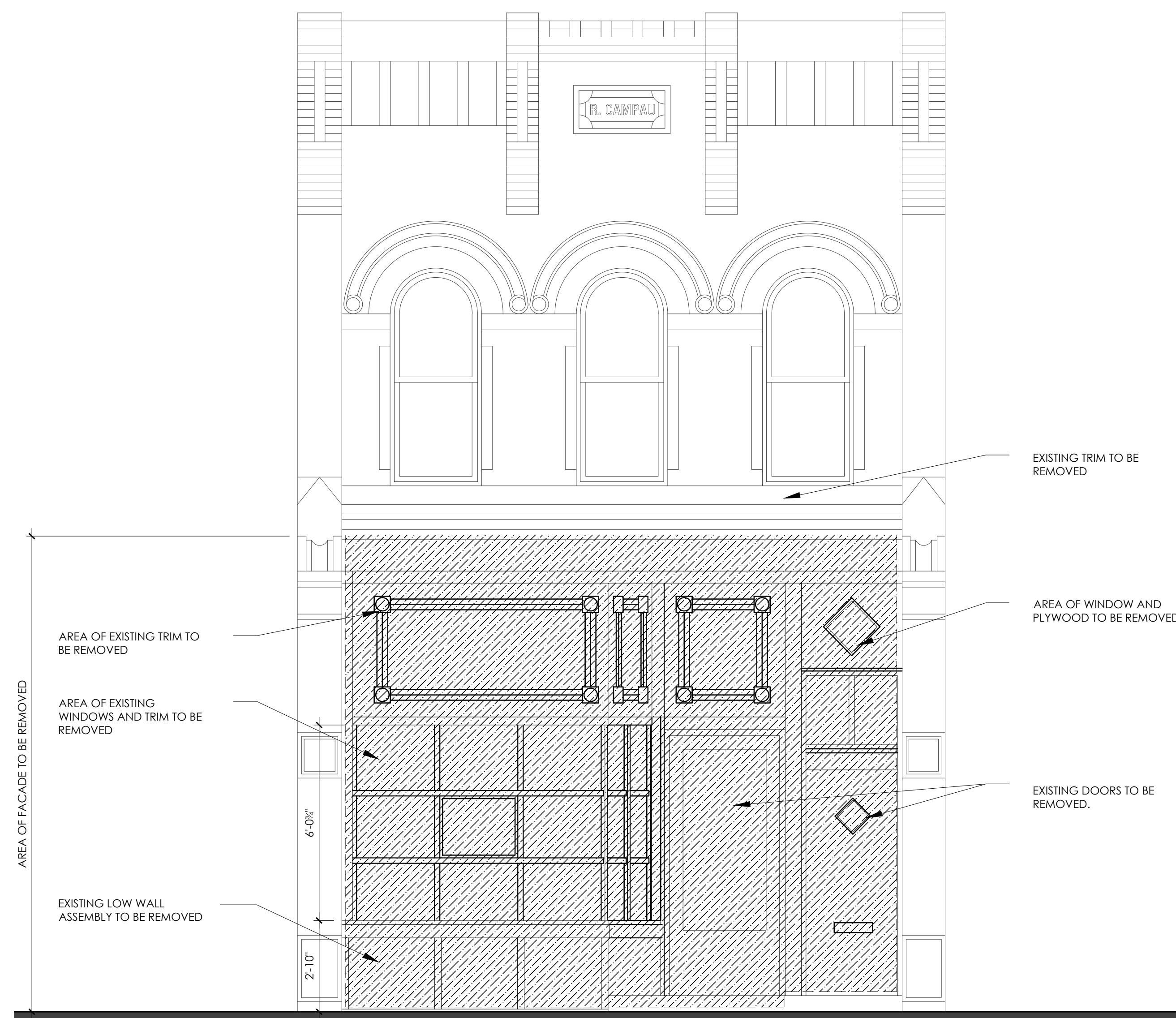
SUGAR HOUSE FAÇADE RENOVATION

PERMIT REVIEW

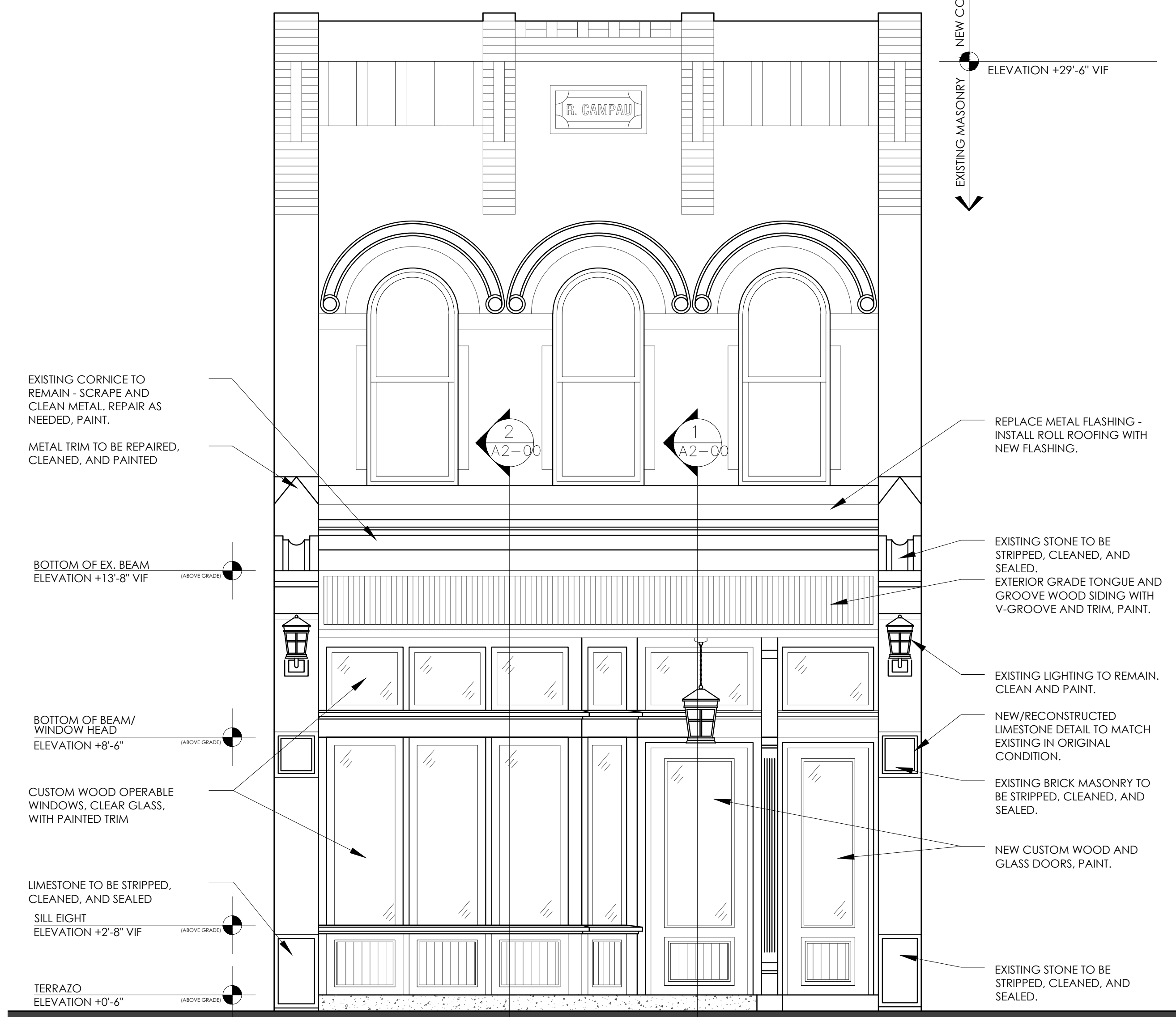
DATE	DESCRIPTION
1. 08.09.2015	PERMIT REVIEW
2. 09.01.2021	OWNER COMMENTS
3. -	-
4. -	-
5. -	-
6. -	-
7. -	-

PLANS & ELEVATIONS

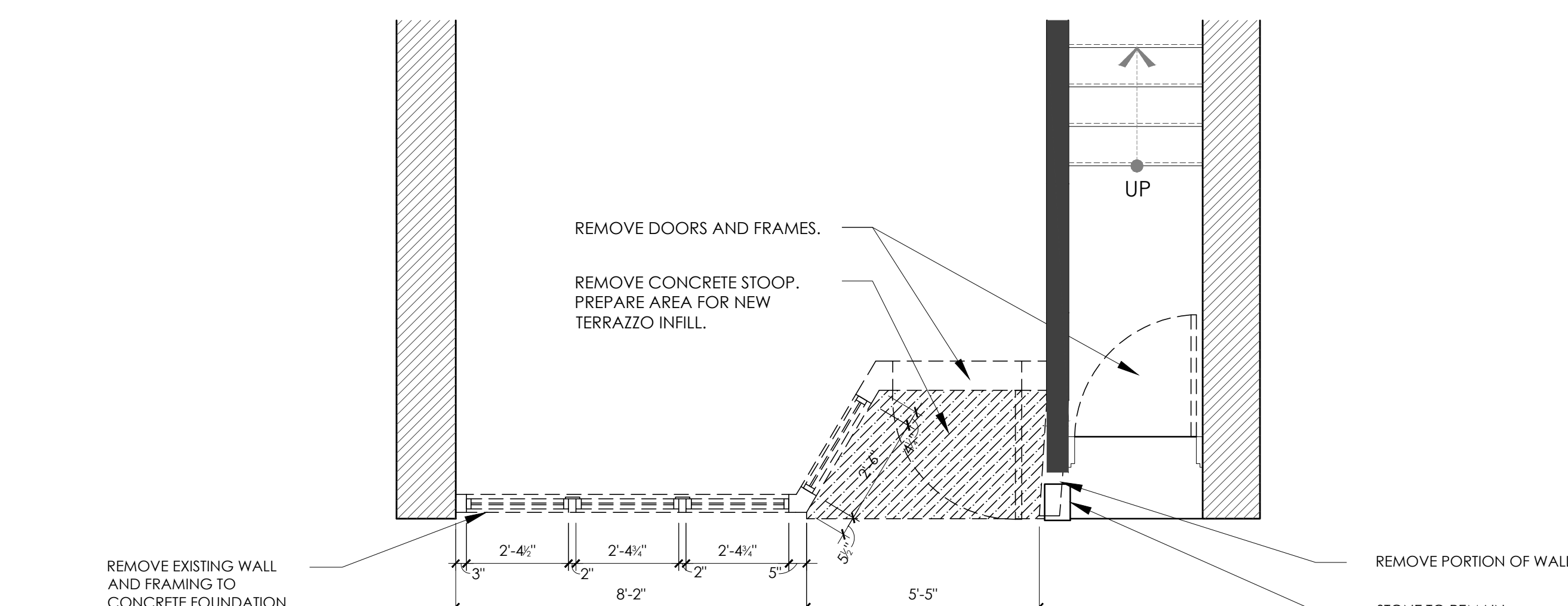
DRAWING NO. A1-00



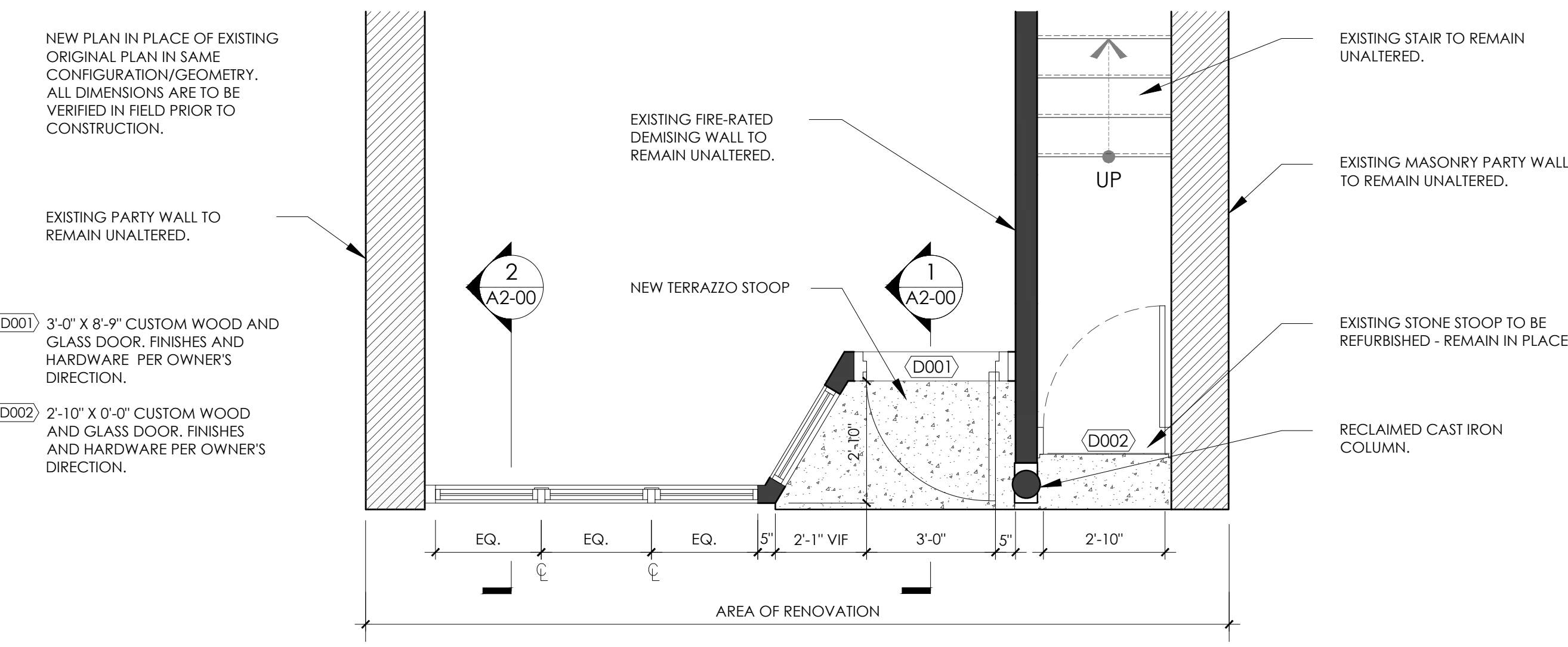
1 FRONT ELEVATION - DEMOLITION SCALE: 3/8"=1'



3 FRONT ELEVATION - NEW WORK SCALE: 3/8"=1'



2 PLAN - DEMOLITION SCALE: 3/8"=1'



4 PLAN - NEW WORK SCALE: 3/8"=1'



SITELINE®

WOOD & CLAD-WOOD
WINDOWS & PATIO DOORS

JELD-WEN
WINDOWS & DOORS

GREAT HOMES START WITH JELD-WEN™

Your home is where all the big events happen — where you gather for holiday meals, watch the big game and celebrate birthdays and anniversaries. To be part of your home is something we take very seriously.

We believe that a home is much more than the sum of its parts and that what you put into it really does matter. That's why our Sitaline® wood windows and patio doors are designed to be more than simply beautiful. They're crafted to be reliable and efficient, and they're backed by a warranty that gives you and your family peace of mind.

Every home is different, and JELD-WEN offers Sitaline wood products in a wide variety of styles, colors and finishes to complement your unique style and perform for years.

Because it's not just a house. It's your home.





TABLE OF CONTENTS

Why Buy JELD-WEN	4
WINDOWS	
Casement	8
Awning	11
Push-Out Casement and Awning	13
Casement and Awning High Performance Features	14
Double-Hung	16
Segment Top and Radius Top Rail	19
Double-Hung Replacement Options	20
Horizontal Sliding Windows	23
Fixed, Radius and Geometric	24
PATIO DOORS	
Swinging	26
Sliding	29
Folding	30
OPTIONS	
Interior Finishes and Trim	32
Exterior Finishes and Trim	33
Glass	34
Hardware	36
Divided Lites	40
Screen Technology	41
SPECIFICATIONS	
Warranty	42
About JELD-WEN	46



WHY BUY JELD-WEN

Siteline® wood and clad-wood windows and patio doors offer more than just beautiful style. This collection is the result of more than a decade of research and development. They're made with care and an uncompromised commitment to quality that you can rely on for years to come. Beautifully made, intelligently built and available in a wide range of styles, colors and finishes, Siteline wood window and patio door products fit your unique style and meet your demand for superior quality.

SUPPORTING SUSTAINABILITY

Responsible Forestry

We recognize that our future success as a wood products manufacturer is dependent upon responsible and sustainable forestland management. With that in mind, we proudly offer Ponderosa Pine wood windows and doors that are either SFI® or FSC® certified. Our dual-certification is testament to a desire to offer products you can feel good about.



The mark of
responsible forestry





AuraLast® wood protects against wood rot for as long as you own and occupy your home. Guaranteed.



Guaranteed Protection Against Wood Rot

JELD-WEN® wood windows and patio doors made with exclusive pine AuraLast wood are guaranteed not to rot for as long as you own and occupy your home. Wood components made from AuraLast wood maintain their structural integrity even in the toughest climates. [Visit jeld-wen.com](http://jeld-wen.com) to view the full warranty.*



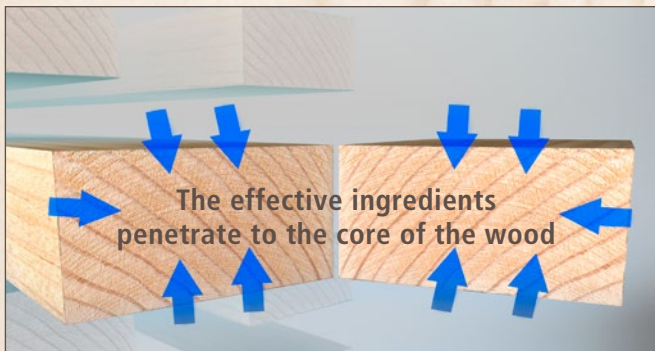
Surface-to-Core Protection

Because of our vacuum/pressure process, AuraLast wood provides virtually 100% penetration of the protective ingredients. Other manufacturers use submersion/dip-treatment methods, which only protect the outer surface of the wood.



Working With AuraLast Wood is Easy

AuraLast offers the strength and beauty of real wood because it is real wood, not a composite. AuraLast wood is colorless, stainable and odorless.



Virtually 100% Surface-to-Core Protection



AuraLast is Safe

AuraLast wood is made by using a water-based solution to deliver the effective ingredients to the core of the wood. Traditional dip-treatments use a solvent-based chemical bath. During production our AuraLast process releases 96% fewer volatile organic compounds than the traditional dip-treatment method.



Traditional treatments only protect the outer surface

A JELD-WEN Exclusive

Only JELD-WEN makes window and door products with natural pine AuraLast wood that are built to last.

Protects Against Water Saturation

AuraLast wood offers superior resistance to water saturation, which protects against swelling that causes windows and doors to stick.

Protects Against Termites

Harmful termites will eat through unprotected wood—not so with AuraLast wood.

[Visit jeld-wen.com/auralast](http://jeld-wen.com/auralast) for more information

***AuraLast Lifetime Limited Warranty Coverage for Wood Decay and Termite Damage**

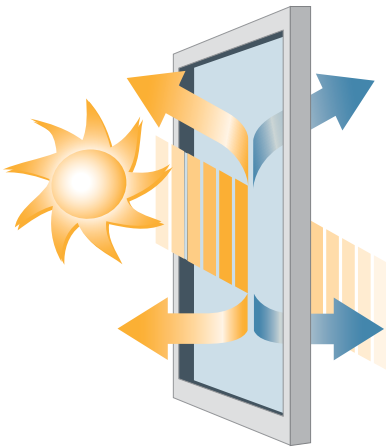
JELD-WEN products made from pine AuraLast wood will not rot.

Engineered for High Performance

A commitment to excellence and innovation inspired our new Sitrine® wood windows and patio doors. Each door and window is designed for ease of operation, low maintenance and beauty that stands the test of time.

Energy Efficiency Designed to Last

Can a door or window be called high-performance? Definitely. Sitrine wood windows and patio doors meet or exceed 2016 ENERGY STAR® 6 requirements and offer increased thermal performance and weather resistance with outstanding energy advantages. Our thermally improved engineered sill and frame designs feature innovative advancements for added energy efficiency and durability.



In warm weather, LoE³-366 glass reflects the sun's energy and prevents it from entering the home.

In cold weather, LoE³-366 glass reduces the amount of heat lost by reflecting it back inside.



With Neat® glass, you gain natural cleaning convenience. Neat glass harnesses the sun's UV rays (even when the sky is cloudy) to loosen dirt from the glass so rainwater can easily rinse away the grime. No manual activation is required.

Architectural Enrichment

Whether it's new construction, renovation, traditional or modern, JELD-WEN offers a style that fits your needs. We make it easy to enhance a home with depth and definition that complements your project. Detail updates such as the recessed sash on the casement and our double-hung concealed jamb liner add architectural flair and aesthetic appeal with clean, smooth, contemporary lines. Regardless of the climate where you live, we offer the products you need, with larger unit sizes and expanded design options.

Clearly Better

All Sitrine wood windows and patio doors come with LoE³-366® glass, which blocks infrared rays, so you'll stay cooler in the summer and warmer in the winter. Only JELD-WEN Sitrine wood products come standard with LoE³-366 and Neat® glass. ENERGY STAR® certified versions of Sitrine wood products are available with energy efficient options, including argon-filled or high-altitude glass.

Fit Plus Finish

A wide range of colors, hardware and hardware finishes help you make the statement you want, right down to the last detail. Our many clad color finishes are guaranteed not to chalk or fade for 10 years, even in coastal environments. Optional anodized finishes bring extra durability, and nine interior finish options make it easy to coordinate your Sitaline products with your home's trim, cabinetry and furnishings. Decorative glass choices, divided lites and multiple screen options offer styles ranging from contemporary to classic.

Great Views Inside and Out

Your home is as unique as you are. Sitaline wood windows and patio doors offer many ways to help you save energy without compromising on design and style. JELD-WEN wood products provide the beauty, options and long-lasting performance that you and your family deserve. We wouldn't have it any other way.



CASEMENT WINDOWS

This clean, modern design is a simple and beautiful way to accent different rooms in your home in addition to maximizing ventilation. This type of window can be hinged on either the left or right so that the sash opens outward in a swinging motion. The streamlined design of the profile detail complements historic, traditional, Craftsman and contemporary architecture.

A great choice for new construction or replacement, JELD-WEN® casement windows offer multiple sizes, colors and glass options. See dealer for additional product details and ordering information.



Streamlined profile complements a variety of architectural styles.





AWNING WINDOWS

A versatile option for many architectural styles, the awning window provides an intriguing look alone or when grouped with other window types. It is hinged at the top and opens out from the bottom in an outward swing for a unique light and ventilation source.



Ease of operation and greater energy efficiency with standard LoE³-366[®] insulated glass make JELD-WEN[®] awning windows a great addition to any room. See dealer for additional product details and ordering information.



PUSH-OUT CASEMENT AND AWNING WINDOWS

Simplicity is at the core of these stylish window options. They open like our other casement windows (hinged at the side) and awning windows (hinged at the top) yet they do so without a hardware crank. Just unlatch the lock to open for ventilation.

SWINGING SCREEN

Historically detailed swinging screen matches wood and hardware finishes

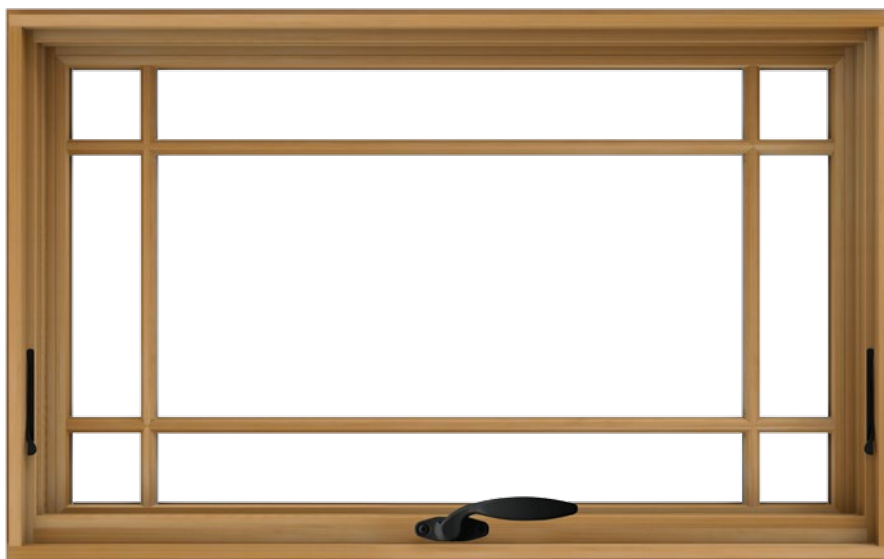
PUSH-OUT HANDLE

Simple and secure, this handle is reminiscent of old world charm but with the added benefits of modern security



HIDDEN MAGNETIC CLOSURES

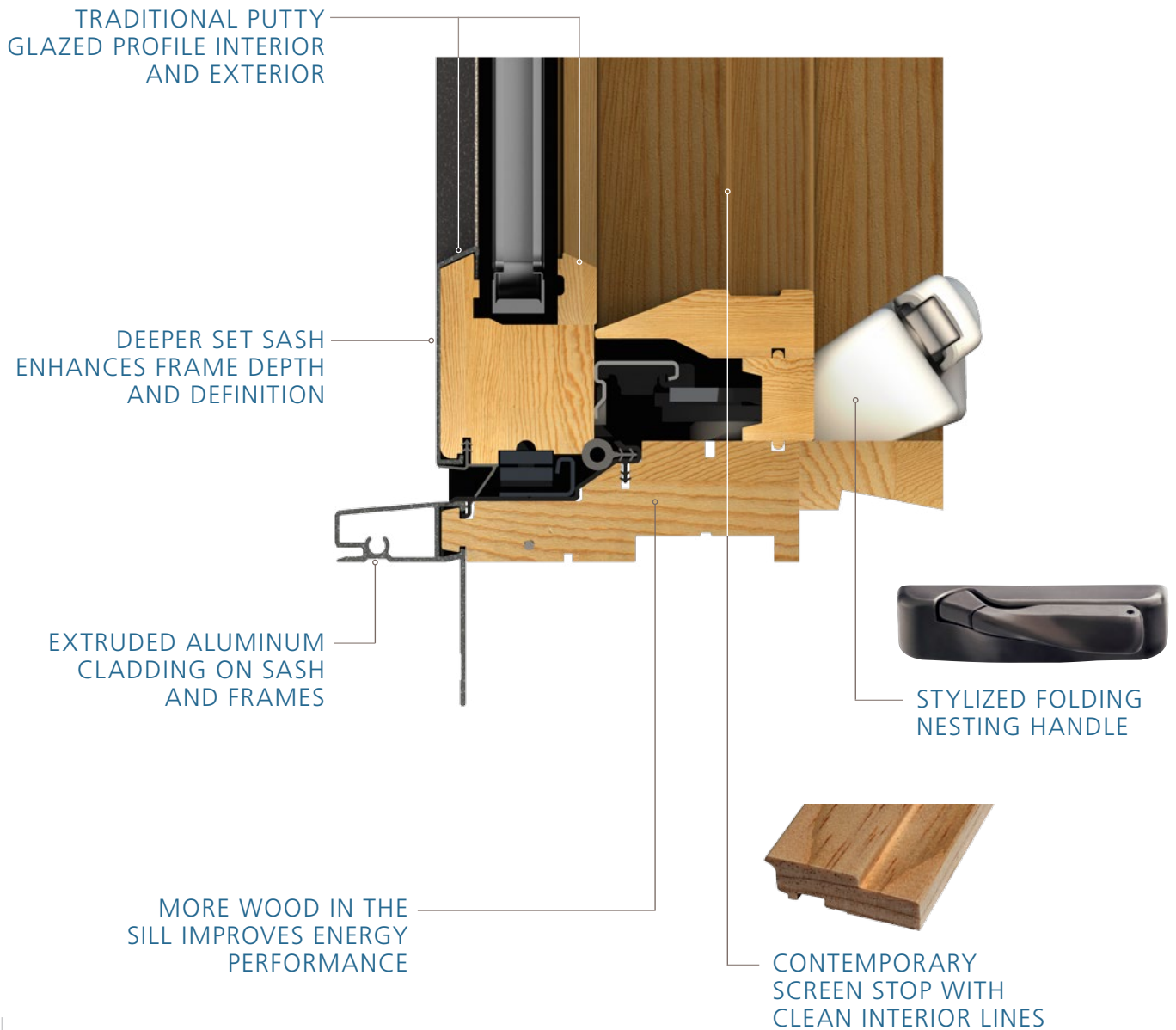
For a clean unobstructed look.



Clean lines, proven operation and multiple options for screens, finishes and hardware make these windows a great choice for your home. See dealer for additional product details and ordering information.

CASEMENT AND AWNING HIGH PERFORMANCE FEATURES

Our goal of achieving a window design that meets the 2016 ENERGY STAR® 6 criteria has allowed us to take advantage of the latest in high performance engineering and design. The new Sitaline design includes heavier hardware and greater thermal performance. The traditional putty glaze and deeper set sash features give this window an architecturally enriched appearance that works well in modern, historical, new construction, historical renovation and light commercial.





INTERIOR OPTIONS

Let's start on the inside. Here, you can choose your wood type, finish and trim options.

INTERIOR WOOD OPTIONS

Increase a home's sense of visual harmony by choosing one of our interior wood options to coordinate with trim, cabinetry and furnishings. In addition to AuraLast® wood pine or primed we offer mixed grain Douglas fir, or alder, a grain that blends well with cherry, maple or birch.



AURALAST®
WOOD PRIMED
OR PINE



MIXED GRAIN
DOUGLAS FIR



ALDER

STANDARD INTERIOR FINISHES*

Custom options available.

- | | |
|--------------------|--------------|
| 1. BRILLIANT WHITE | 6. CIDER |
| 2. IVORY | 7. FRUITWOOD |
| 3. DESERT SAND | 8. CORDOVAN |
| 4. CLEAR LACQUER | 9. WALNUT |
| 5. WHEAT | |



INTERIOR TRIM

Interior radius casings are available in pine for radius windows and patio doors. These casings come in several patterns.



INTERIOR GLAZING STOPS

Our Traditional sash profile replicates the look of an historical putty glazed window. The optional Contemporary profile brings a simple clean line for modern interior design.



CONTEMPORARY



TRADITIONAL

EXTERIOR OPTIONS

This is where you decide what your door or window will look like from the outside of your home. Custom colors are available or upgrade your standard color to include PVDF protection against color fade with a 10-Year Limited Warranty.

STANDARD CLAD COLORS



OPTIONAL CLAD COLORS



ANODIZED FINISH COLORS*



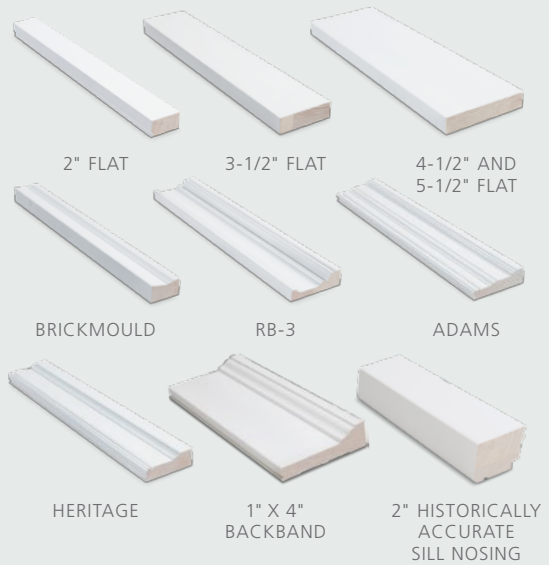
EXTERIOR WOOD OPTIONS



AURALAST® WOOD
PINE OR PRIMED

EXTERIOR TRIM

PRIMED WOOD



CLAD

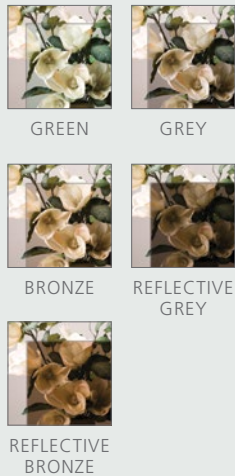


GLASS OPTIONS

Here you can choose from a variety of styles to make glass much more than just transparent.

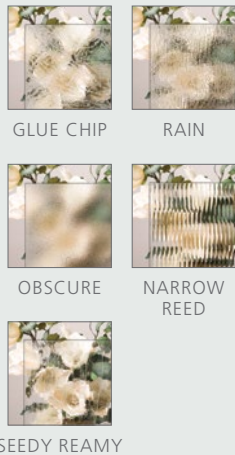
TINTED GLASS

Tinted glass reduces glare, and is ideal for areas that get a lot of direct sunlight in the summer. We offer green, grey, bronze, reflective grey and reflective bronze tinted glass.



TEXTURED GLASS

Let light in while maintaining privacy with textured glass. We offer a wide range of textures to meet your aesthetic preferences. Five of our most popular choices are shown here.



SPACER BAR

For even more versatility spacer bar color options enhance the appearance of your windows.



ENERGY SAVING GLASS OPTIONS

LoE³-366® AND LoE EC INSULATING GLASS

Our standard high-performance LoE³-366 insulating glass enhances energy conservation by helping homes stay cooler in the summer and warmer in the winter. LoE³-366 provides more protection against solar heat gain, reduces condensation and helps limit fading of interior furnishings. For even more protection choose LoE EC. It improves thermal performance and is the optimal solution for ENERGY STAR® in certain regions of the country.

NEAT® GLASS

This is a natural cleaning convenience that comes standard for all Sitrine wood and clad-wood windows and patio doors. By harnessing the sun's UV rays to loosen dirt from the glass, rainwater can easily rinse away grime. No manual activation is required.



ENERGY STAR®

Many JELD-WEN® windows and doors are ENERGY STAR certified, which means they exceed the minimum energy efficiency criteria for the climate region in which you live. JELD-WEN has been a proud ENERGY STAR partner for over a decade.

PRESERVE® PROTECTIVE FILM

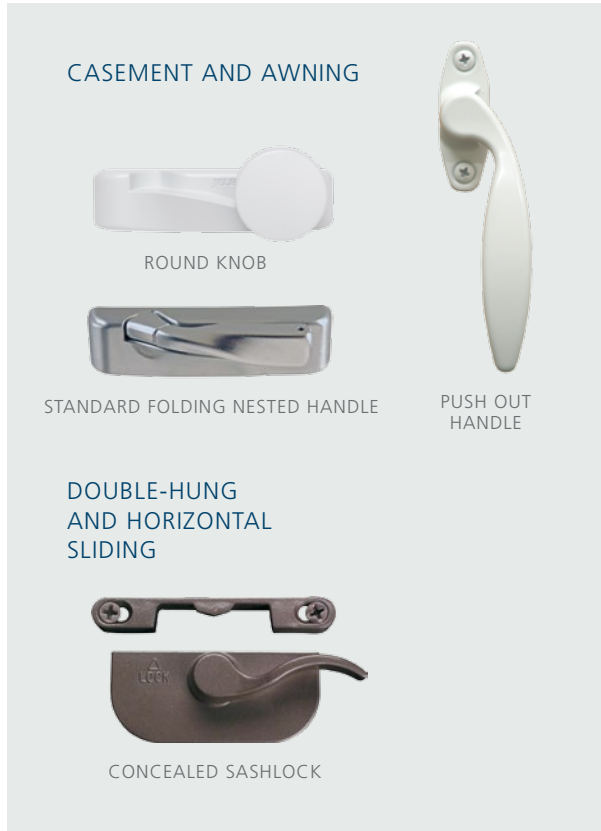
Standard for all Sitrine® wood and clad-wood windows and patio doors, this film is factory-applied to both sides of the glass. It protects against debris and scratches during shipping and handling or at a construction site. It's easy to remove and saves cleanup time after installation.

TEMPERED GLASS

This type of glass is treated with heat, so it can stand greater force or pressure on its surface, and it will not break into sharp pieces. This is mostly used on patio doors or windows that are installed near floor level.

HARDWARE OPTIONS

WINDOW HARDWARE



JELD-WEN® WOCD MERGE FORM AND FUNCTION

Windows add so much to our daily lives - daylight, ventilation and views. They can also be necessary for emergency escape and rescue, so the building codes in your area may require certain windows to fully open. This means homeowners should take measures to prevent window falls. Factory-installed Window Opening Control Devices (WOCD) from JELD-WEN are designed to meet the ASTM F2090-10 standard intended to help prevent accidental falls from windows by children five years of age and younger. A WOCD automatically limits the sash opening to less than 4 inches, unless it is deliberately disengaged, allowing the sash to fully open. The streamlined design of the JELD-WEN® WOCD won't obstruct views and preserves the beautiful appearance of your windows, unlike many after-market window guards. Available on double-hung, casement and sliding windows.

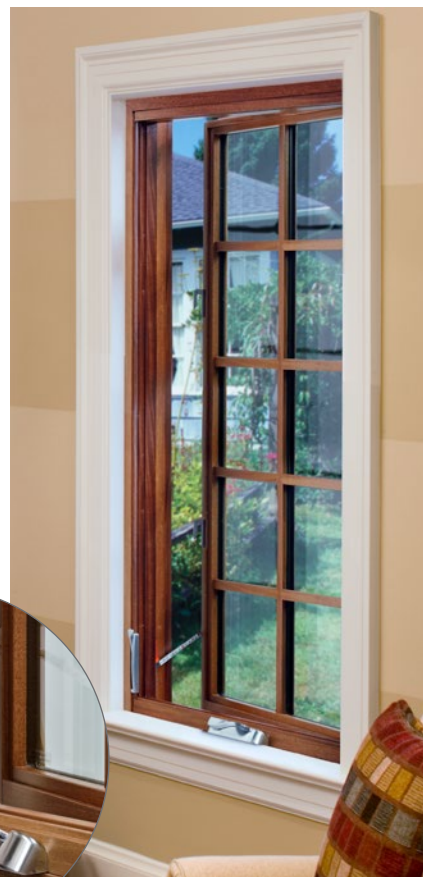
CASEMENT AND DOUBLE-HUNG WOCD



WINDOW OPEN



WINDOW CLOSED



INTERIOR VIEW. WOCD LIMITS THE SASH OPENING TO LESS THAN 4 INCHES

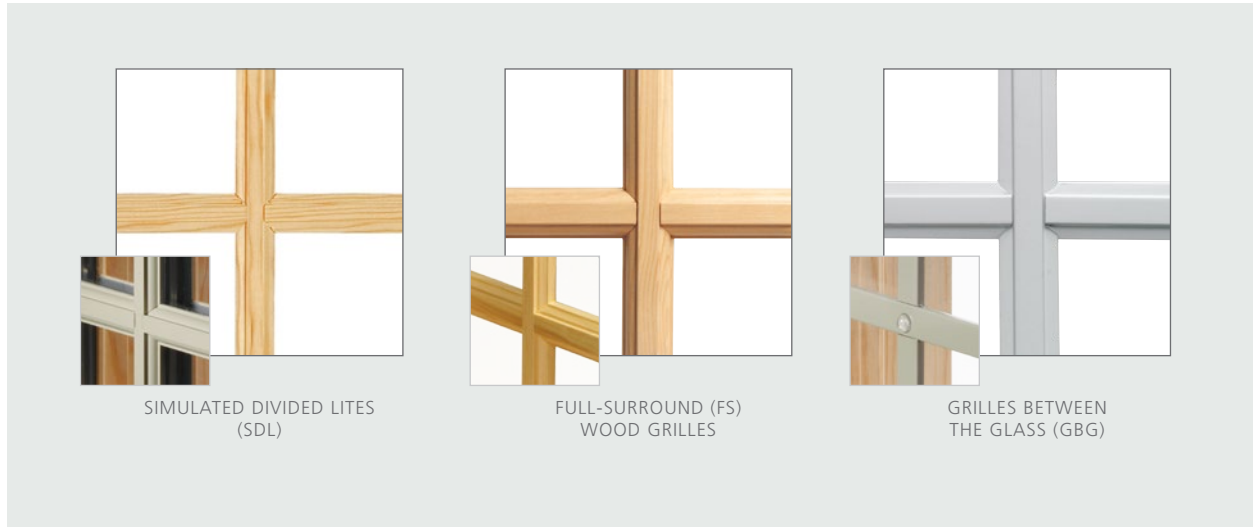


FEATURES & BENEFITS

- » Streamlined design won't obstruct views like many after-market options
- » Automatically limits sash opening to less than 4 inches
- » Manual override for full operation and for emergency escape and rescue
- » Device automatically resets by closing the window
- » Meets the ASTM F2090-10 standard
- » Potential alternative to minimum sill height requirement (consult local building codes)

DIVIDED LITES

Add architectural interest to your JELD-WEN® Sitaline® wood and clad-wood windows with one of our decorative grille options. These options include Simulated Divided Lites (SDL) for an authentic look, Full-Surround (FS) wood grilles that can be removed for easy cleaning, and maintenance-free Grilles Between the Glass (GBG).



SIMULATED DIVIDED LITES (SDL)

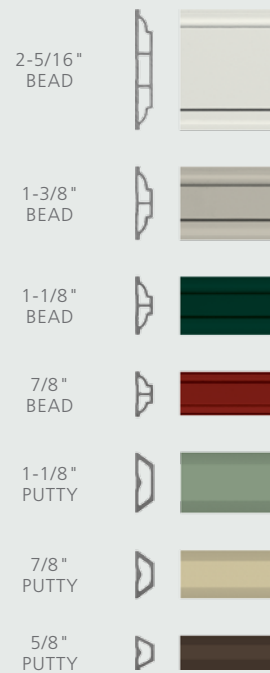
Our permanently attached wood grilles create a truly authentic look. Grilles are adhered to the interior glass while exterior grille options include aluminum for clad wood or wood for primed wood. The optional light brown or silver shadow bars are placed between the two panes of insulating glass to complete the effect. Interior and exterior SDLs are available in decorative beaded or subtle putty profiles (shown to the right).

FULL-SURROUND (FS) WOOD GRILLES

Enjoy low-maintenance beauty with our full-surround wood grilles that can be removed for easy cleaning. Choose from 7/8", 1-1/8" or 1-3/8" grilles that are positioned on the interior glass surface.

GRILLES BETWEEN THE GLASS (GBG)

This option provides style without the upkeep. Select 5/8" flat or 23/32" or 1" contour metal grilles in many of our clad colors.



Decorative grilles are also available in woodgrain finishes.

SCREEN TECHNOLOGY

Today's screen options are capable of much more than keeping out insects. Here you'll find an option that's right for you.

PHANTOM SCREENS® TECHNOLOGY

These retractable screens provide wide-open views when you want them or breezy protection from the outdoors when you need it. They're durable and easy to operate. Phantom Screens are available on awning, casement and double-hung windows. Screens for double-hung windows also have a removable track that allows the sash to tilt in for easy cleaning.

SCREEN OPTIONS*

Let the natural light flood in while keeping insects at bay. With a fine, black fiberglass mesh and light gloss finish, BetterVue® insect screens are now standard for awning, casement, double-hung and horizontal sliding windows. UltraVue®, fiberglass, and aluminum mesh screens are available in charcoal or silver finishes.

PATIO DOOR SCREENS

As on our windows, BetterVue screens are standard on patio doors. However, you can also choose from bottom rolling extruded (both regular and heavy-duty), or a top-hanging screen.



SWINGING SCREEN

Historically detailed swinging screen for push-out casement and awning windows matches wood and hardware finishes. See image on page 13.



REGULAR SCREEN

VIEW THROUGH REGULAR
FIBERGLASS INSECT SCREEN

BETTERVUE® SCREEN

VIEW THROUGH BETTERVUE®
INSECT SCREEN (STANDARD)

ULTRAVUE® SCREEN

VIEW THROUGH OPTIONAL
ULTRAVUE® INSECT SCREEN

*Insect screens are intended to allow air and light in, while keeping insects out. They are not intended to stop children from falling through an open door or window. For safety screens and other security devices, contact your local building supply retailer.

JELD-WEN® WINDOW & PATIO DOOR LIMITED WARRANTY

JELD-WEN® products¹ are designed to create lasting value for your home. This warranty is effective for all JELD-WEN window and patio door Products (except United Collection products) manufactured on or after **February 1, 2014** for use in the United States and Canada. Any previous warranties will continue to apply to products manufactured by JELD-WEN prior to this date. For additional information, including care and maintenance instructions, installation instructions and previous warranties, refer to www.jeld-wen.com or www.jeld-wen.ca.

WHAT THIS WARRANTY COVERS

Except as set forth in the Special Coverages section below, we warrant that if your JELD-WEN Product exhibits a defect in material or workmanship within the time periods from the date of manufacture as specified below, we will, at our option, repair, replace or refund the purchase price of the Product or component part. Skilled labor² (where deemed necessary by us) to repair or replace any component is provided as specified below.

	WOOD & CLAD WOOD	VINYL	ALUMINUM (EXCEPT SUMMIT)	SUMMIT ALUMINUM
BASIC PRODUCT COVERAGE Owner-Occupied Single-Family Residence	20 years	As long as you own and occupy your residence	10 years	1 year
BASIC PRODUCT COVERAGE Commercial (Other than Owner-Occupied Single-Family Residence)	20 years	10 years	2 years	1 year
SKILLED LABOR ² COVERAGE	2 years	2 years	1 year	No coverage
TRANSFERABILITY This length of coverage applies if you sell your residence or it becomes occupied by someone other than the original owner	10 years	10 years	Non-transferable	Non-transferable

SPECIAL COVERAGES (APPLIES TO BOTH OWNER-OCCUPIED AND COMMERCIAL)

The following Special Coverages apply to special product features and options; not all options are available on all products or in all regions.

GLASS OPTIONS	COVERAGE	NOTES
Triple-Glazed Glass Units	20 years	Includes the glass panes and the insulating seal.
ImpactGard® Glass Units	10 years	
Special Glazings	5 years	Includes laminated glass units other than ImpactGard, and glass options not listed in our product literature, e.g., leaded or decorative glass.
Blinds/Shades between the Glass	10 years	Includes the seal, external control mechanism and operation of the shade/blind.
Spontaneous Glass Breakage	1 year	Applies to sealed glass units installed in windows and patio doors. Laminated glass and special glazings are excluded. Coverage includes replacement glass and skilled labor ² necessary to replace the glass for one year. (Spontaneous breakage occurs when the glass develops a crack without sign of impact.)
Accidental Glass Breakage	Same as the Basic Product Coverage above (Owner-Occupied or Commercial)	Applies to vinyl Products ordered with the "RS" glass package. Not covered: damage attributable to acts of nature (e.g. fire, hurricane, etc.), civil disorder, building settling, structural failures of walls or foundations or improper installation, construction job-site mishaps, storage or handling. Special glazings and ImpactGard glass are not covered by this glass breakage warranty.

FINISH OPTIONS	COVERAGE	NOTES
Clad Finish on Wood Products	Kynar®: 20 years Polyester: 10 years Anodized: 5 years	Coverage is for peeling, checking, cracking or exhibiting excessive chalk, fade or color change ³ .
Factory applied Select Finish™ exterior finish on Wood Products	10 years; 5 years at 100%, 50% thereafter	Coverage is for failure of adhesion, peeling, checking, flaking, cracking or blistering.
	5 years	Coverage is for exhibiting excessive chalk, fade or color change ³ .
Factory Interior Finish on Wood Products	1 year	Coverage is for peeling, checking or cracking. Should the factory interior finish be proven defective within this time period, we will at our option, replace or refinish the component or product, or offer a refinish credit up to \$50 per opening for windows or \$100 per opening for patio doors. This coverage applies to factory-applied finish coat options only; standard factory-applied primer is not a finish coat.
Colored Exterior and Laminated Interior on Vinyl Products	10 years	Coverage is for peeling, blistering or flaking and excessive color change ³ . This coverage does not extend to discoloration, polish, surface damage, or alteration caused by the use of natural or chemical solvents or an environmental factor causing such damage.

OTHER SPECIAL COVERAGES	COVERAGE	NOTES
AuraLast® Protection for Wood Products	Owner-Occupied Single-Family Residence: as long as you own and occupy your residence	Coverage is for wood decay and/or termite damage in pine wood components. Warranty coverage outside Canada, the contiguous 48 states and Alaska is contingent upon approval from the JELD-WEN Customer Care Department. Please contact us.
	Commercial: 20 years	
Custom Fiberglass Door Slabs	As long as you own and occupy your residence	
Factory Prefinish on Custom Fiberglass Doors	5 years	Should the factory prefinish be proven defective, we will at our option refinish the door or pay up to \$350.00 per opening to the current owner.
Electric Operators	1 year	Coverage includes replacement parts and skilled labor necessary to replace the operator for one year.
Retractable Roll Screens	5 years	
Accidental Screen Damage	Same as the Basic Product Coverage above (Owner-Occupied or Commercial)	Applies to Bravo, Primo and Ipex Replacement window and patio door product lines. Not covered: damage attributable to acts of nature (e.g. fire, hurricane, etc.), civil disorder, building settling, structural failures of walls or foundations or improper installation, construction job-site mishaps, storage or handling.

HOW TO GET ASSISTANCE

If you have a problem with your JELD-WEN Product, contact the dealer/distributor or contractor from whom you purchased your product or contact us directly:

IN THE UNITED STATES:	IN EASTERN CANADA:	IN WESTERN CANADA:	IN ONTARIO CANADA
JELD-WEN Customer Care Attn: Warranty Claims P.O. Box 1329 Klamath Falls, OR 97601	JELD-WEN Service Department 90, rue Industrielle Saint-Apollinaire, Quebec Canada G0S 2E0	JELD-WEN Service Department 550 Munroe Avenue Winnipeg, Manitoba Canada R2K 4H3	JELD-WEN Service Department 90 Stone Ridge Road Vaughan, Ontario Canada L4H 3G9
PHONE 888-JWHelpU 888-594-3578 FAX 800-436-5954	PHONE 888-JWHelpU 888-594-3578 FAX 800-436-5954	PHONE 888-JWHelpU 888-594-3578 FAX 800-436-5954	PHONE 888-JWHelpU 888-594-3578 FAX 800-436-5954
EMAIL jeldwenwarranty@jeldwen.com		EMAIL wpgservice@jeld-wen.com	
www.jeld-wen.com/contact-us			

We can respond quickly and efficiently if you provide the following: a) product identification (from the original order/invoice, spacer code, permanent label or the window identification number found on corner of glass), b) how to contact you, c) the address where the product can be inspected and d) a description of the apparent problem and the product (photographs are helpful).

WHAT WE WILL DO

Upon receiving your notification, we will send out an acknowledgment within three business days to the contact, which you have provided. We will investigate your claim and will begin to take appropriate action within 30 days after receipt of notification. If your warranty claim is denied, we may charge an inspection fee for an on-site inspection that is required or requested by you.

If your claim is accepted and we choose to repair or replace the product or a component of the product, the replacement product/component will be provided in the same specification as the original product. Replacement components/products are warranted for the balance of the original product warranty or 90 days, whichever is longer.

If the claimed nonconformity is warp of a door slab, we may defer repairing or replacing the door slab for a period up to twelve (12) months from the date of claim. It is not uncommon for a temporary warp condition to occur as the door slab adjusts to local humidity and temperature conditions. This deferral will not be counted against the warranty period.

WHAT THIS WARRANTY DOES NOT COVER

JELD-WEN is not liable for damage, product failure or poor product performance due to:

- Normal wear and tear, including normal wear and tear of weatherstrip; natural weathering of surfaces. Variance in color or texture of natural wood parts and natural tarnishing of copper cladding are not considered defects.
 - Normal wear and tear to hardware and naturally occurring changes to hardware finishes (e.g., corrosion or tarnishing).
 - Exposure to chemicals (e.g., brick wash) or a harsh environment (e.g., salt spray or airborne pollutants) unless otherwise stated above.
 - Misuse, abuse or failure to properly finish and provide maintenance.
 - Alteration or modification to the Product (e.g., customer applied tints or films, paint finishes, security systems).
 - Any cause beyond the reasonable control of JELD-WEN (e.g., fire, flood, earthquake, other acts of third parties outside of our control).
 - Failure to provide an adequate overhang for fiberglass doors; damage caused by extreme temperature buildup where storm doors are present. For general guidelines, see our "Appropriate Protection for Exterior Doors" in our product literature or at www.jeld-wen.com/resources;
- for specific information pertaining to your structure, consult your contractor or other building professional.
- Improper installation not in conformance with JELD-WEN installation instructions (note: see www.jeld-wen.com for current installation instructions); operational problems and problems related to water and/or air infiltration/leaking as a result of improper installation or flaws in building design or construction.
 - Installation into a condition that exceeds product design standards and/or air certified performance specifications and/or is not in compliance with building codes.
 - Extreme artificial temperature buildup or exposure (e.g., where storm doors/windows are present.)
 - Hardware or inserts that are not provided by us, such as locksets, door handles, strikes, etc.
 - Condensation or damage as a result of condensation (Note: unless due to insulating glass failure, most condensation problems are related to excessive humidity levels in a structure. Contact a heating/air conditioning specialist for help.)

- Wood decay in wood components other than of pine species and any components (including pine) that come in direct contact with soil. Note: superficial mold/mildew does not indicate wood decay.
- Hairline cracks in factory-applied finishes; surface cracks that do not compromise the underlying material are not a defect.

JELD-WEN IS ALSO NOT LIABLE FOR:

- Glass breakage (except as covered above).
- Screen damage due to normal wear and tear, misuse, abuse, or insect or animal activity (except as specifically covered above).
- Slight expansion or contraction due to varying environmental conditions; slab movement (shrinkage or swelling) of 1/4" or less due to temperature and humidity, consult the Homeowner's Manual on how to work with this natural movement.
- Slight imperfections or wavy distortions in the glass that don't impair structural integrity. Note: wavy distortions in the glass (e.g., related to laminate interlayer or heat strengthening of glass) are not considered a defect. Slight color variations in glass are not considered a defect.
- Damage or distortion to other property, including but not limited to, vinyl siding, building components or landscaping caused in whole or in part by reflection of light or heat from JELD-WEN windows or doors.
- Product or component performance decline due to aging, inert gas dissipation, natural processes or failure to provide proper maintenance. Note: Other than inert gas loss due to seal failure, the migration of an inert gas, such as argon, is a natural process that occurs over time and is not a defect.
- Labor and materials for repainting or refinishing activities or the removal or disposal of defective product(s); labor exceeding the time periods specified above.
- Incidental or consequential damage. Some states/provinces do not allow the exclusion or limitation of incidental or consequential damages, so this may not apply to you.

IMPORTANT LEGAL INFORMATION — PLEASE READ THIS CAREFULLY. IT AFFECTS YOUR RIGHTS.

This Limited Warranty document sets forth our maximum liability for our products. We shall not be liable for special, indirect, consequential, or incidental damages. Your sole and exclusive remedy with respect to any and all losses or damages resulting from any cause whatsoever shall be as specified above. We make no other warranty or guarantee, either express or implied, including implied warranties of merchantability and fitness for a particular purpose to the original purchaser or to any subsequent user of the Product, except as expressly contained herein. In the event state or provincial law precludes exclusion or limitation of implied warranties, the duration of any such warranties shall be no longer than, and the time and manner of presenting any claim thereon shall be the same as, that provided in the express warranty stated herein. This Limited Warranty document gives you specific legal rights, and you may have other rights that vary from state/province to state/province.

Any dispute, controversy or claim arising out of or relating to this warranty, any alleged breach thereof, or the use or sale of the products to which this warranty applies shall be resolved by mandatory and binding arbitration administered by the American Arbitration Association in accordance with its commercial arbitration rules. Original purchaser agrees that they may assert claims against JELD-WEN in their individual capacity only, and not as a plaintiff or class member in any purported class action proceeding. Rejection of these dispute resolution provisions must be sent to JELD-WEN at the address provided herein within thirty (30) days of original purchaser's receipt of the Products to which this warranty applies.

No distributor, dealer or representative of JELD-WEN has the authority to change, modify or expand this warranty. The original purchaser of this Product acknowledges that they have read this warranty, understand it and are bound by its terms and agrees to provide this warranty to the original owner of the structure into which the Product is installed.

¹ "JELD-WEN Products" shall refer to window and patio door products (except United Collection products) manufactured in the United States and/or Canada and marketed under the JELD-WEN brand name for use in the United States and/or Canada. See our separate United Collection warranty, or our Export Warranty for applicable coverage on products used outside the United States and Canada.

² "Skilled labor" refers to tasks where specialized technical knowledge, experience, methods or tools are required to properly identify, diagnose and/or correct product-related problems.

³ "Chalking" of the exterior finish is not a defect unless it exceeds a numerical rating of eight (8) when measured in accordance with the standard procedures specified in ASTM D4214. Fading or changing in color of the exterior finish is not a defect unless it exceeds five (5) E units, calculated in accordance with ASTM D2244, paragraph 6.2. Color change shall be measured on an exposed area of finish that has been cleaned of surface soils and chalk, and the corresponding values measured on the original or unexposed area of finish. Fading or color changes may not be uniform if the surfaces are not equally exposed to the sun and elements. If the above ASTM standards change, the standard in effect at the time of purchase applies. As an option to replacement, we may choose to refinish the product.



Made in USA



© 2015 JELD-WEN, inc.; Window and door designs and this publication are owned by JELD-WEN, inc. and are protected under the U.S. Copyright Act and other intellectual property laws. Phantom Screens® is a registered trademark of Phantom Mfg. (Int'l.) Ltd. All trademarks, service marks, logos and the like (whether registered or unregistered) are owned by JELD-WEN, inc. or others. Unauthorized use or duplication of JELD-WEN intellectual property is prohibited. JELD-WEN reserves the right to change product specifications without notice. For current information, please visit our website, jeld-wen.com. See dealer associate for option information and product availability.

11-93329 05/15 (HPS 05/15 15M)