

# Freud Pump Station Overview

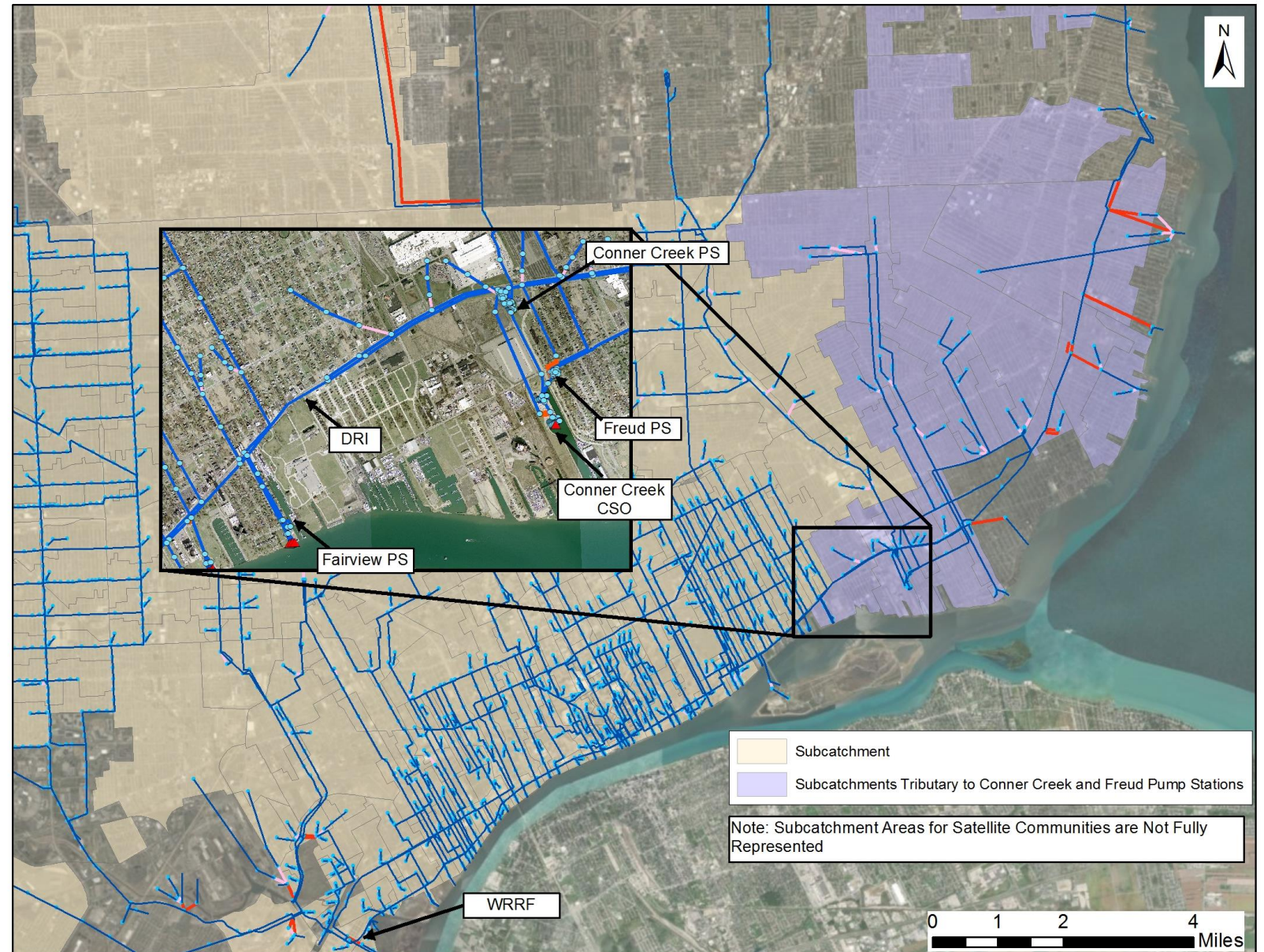
# Freud Pump Station – Current Operation



- Located at 12300 Freud Street, Detroit MI 48215
- Constructed for Detroit DPW in 1954
- Manages both sanitary and storm water flows
- Sanitary: (2) Pumps; 13 and 25 MGD
  - Discharge to 5' diameter sewer on Tennessee St.
- Storm Water: (8) Pumps; 290 MGD each
  - Discharges to the Conner Creek CSO Facility

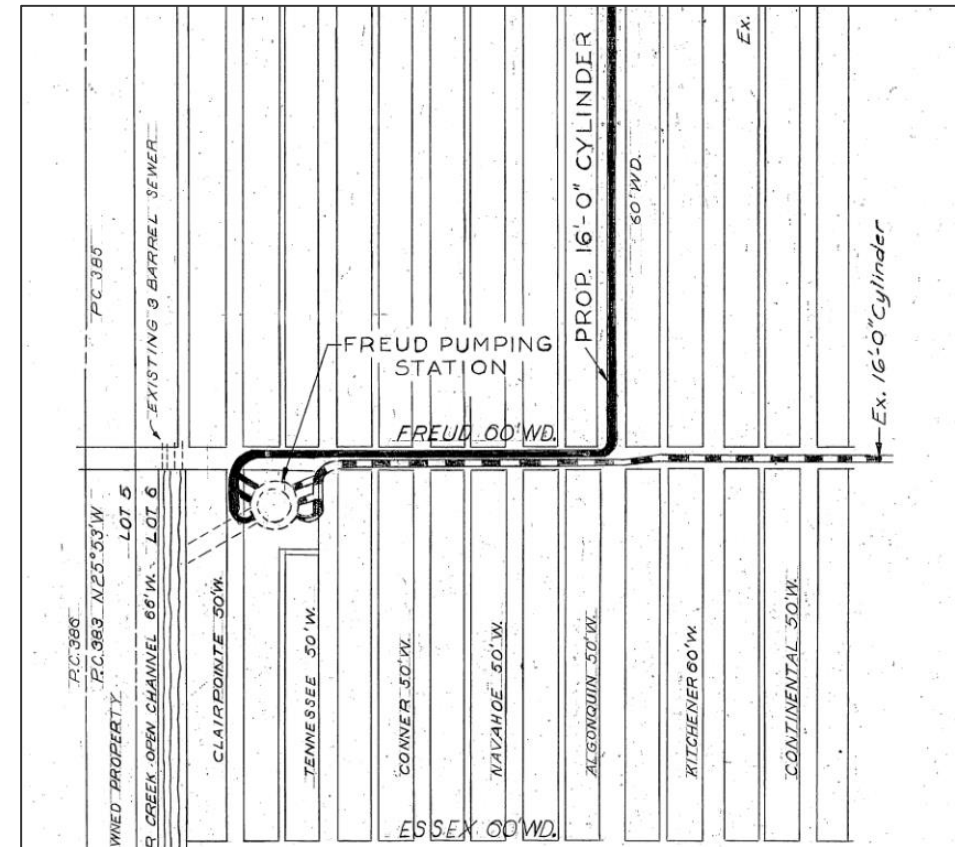
# Service Area

- Population served  
~263,400



# Freud PS Influent Sewers

- 16-ft diameter Ashland Relief Sewer
- 16-ft diameter Fox Creek Relief Sewer
- Approx. 55-ft deep
- Constructed for Detroit DPW in 1950's
- Parallel between Conner St and Algonquin St.
- Each branches into three 10-ft diameter sewers at Freud PS



# Freud PS General Layout

