

NO.	REMARKS
1	TRANSITION
2	TRANSITION
3	TRANSITION
4	TRANSITION
5	TRANSITION
6	TRANSITION
7	TRANSITION
8	TRANSITION
9	TRANSITION
10	TRANSITION
11	TRANSITION
12	TRANSITION
13	TRANSITION
14	TRANSITION
15	TRANSITION
16	TRANSITION
17	TRANSITION
18	TRANSITION
19	TRANSITION
20	TRANSITION
21	TRANSITION
22	TRANSITION
23	TRANSITION
24	TRANSITION
25	TRANSITION
26	TRANSITION
27	TRANSITION
28	TRANSITION
29	TRANSITION
30	TRANSITION
31	TRANSITION
32	TRANSITION
33	TRANSITION
34	TRANSITION
35	TRANSITION
36	TRANSITION
37	TRANSITION
38	TRANSITION
39	TRANSITION
40	TRANSITION
41	TRANSITION
42	TRANSITION
43	TRANSITION
44	TRANSITION
45	TRANSITION
46	TRANSITION
47	TRANSITION
48	TRANSITION
49	TRANSITION
50	TRANSITION
51	TRANSITION
52	TRANSITION
53	TRANSITION
54	TRANSITION
55	TRANSITION
56	TRANSITION
57	TRANSITION
58	TRANSITION
59	TRANSITION
60	TRANSITION
61	TRANSITION
62	TRANSITION
63	TRANSITION
64	TRANSITION
65	TRANSITION
66	TRANSITION
67	TRANSITION
68	TRANSITION
69	TRANSITION
70	TRANSITION
71	TRANSITION
72	TRANSITION
73	TRANSITION
74	TRANSITION
75	TRANSITION
76	TRANSITION
77	TRANSITION
78	TRANSITION
79	TRANSITION
80	TRANSITION
81	TRANSITION
82	TRANSITION
83	TRANSITION
84	TRANSITION
85	TRANSITION
86	TRANSITION
87	TRANSITION
88	TRANSITION
89	TRANSITION
90	TRANSITION
91	TRANSITION
92	TRANSITION
93	TRANSITION
94	TRANSITION
95	TRANSITION
96	TRANSITION
97	TRANSITION
98	TRANSITION
99	TRANSITION
100	TRANSITION

NO.	REMARKS
101	TRANSITION
102	TRANSITION
103	TRANSITION
104	TRANSITION
105	TRANSITION
106	TRANSITION
107	TRANSITION
108	TRANSITION
109	TRANSITION
110	TRANSITION
111	TRANSITION
112	TRANSITION
113	TRANSITION
114	TRANSITION
115	TRANSITION
116	TRANSITION
117	TRANSITION
118	TRANSITION
119	TRANSITION
120	TRANSITION
121	TRANSITION
122	TRANSITION
123	TRANSITION
124	TRANSITION
125	TRANSITION
126	TRANSITION
127	TRANSITION
128	TRANSITION
129	TRANSITION
130	TRANSITION
131	TRANSITION
132	TRANSITION
133	TRANSITION
134	TRANSITION
135	TRANSITION
136	TRANSITION
137	TRANSITION
138	TRANSITION
139	TRANSITION
140	TRANSITION
141	TRANSITION
142	TRANSITION
143	TRANSITION
144	TRANSITION
145	TRANSITION
146	TRANSITION
147	TRANSITION
148	TRANSITION
149	TRANSITION
150	TRANSITION
151	TRANSITION
152	TRANSITION
153	TRANSITION
154	TRANSITION
155	TRANSITION
156	TRANSITION
157	TRANSITION
158	TRANSITION
159	TRANSITION
160	TRANSITION
161	TRANSITION
162	TRANSITION
163	TRANSITION
164	TRANSITION
165	TRANSITION
166	TRANSITION
167	TRANSITION
168	TRANSITION
169	TRANSITION
170	TRANSITION
171	TRANSITION
172	TRANSITION
173	TRANSITION
174	TRANSITION
175	TRANSITION
176	TRANSITION
177	TRANSITION
178	TRANSITION
179	TRANSITION
180	TRANSITION
181	TRANSITION
182	TRANSITION
183	TRANSITION
184	TRANSITION
185	TRANSITION
186	TRANSITION
187	TRANSITION
188	TRANSITION
189	TRANSITION
190	TRANSITION
191	TRANSITION
192	TRANSITION
193	TRANSITION
194	TRANSITION
195	TRANSITION
196	TRANSITION
197	TRANSITION
198	TRANSITION
199	TRANSITION
200	TRANSITION

DETAIL OF WALL FOR ROOMS NO'S 100, 101, 102, 103, 111, 112, 114

TYPICAL SECTION THRU AREA WALLS SCALE 1/2" = 1'-0"

FIRST FLOOR PLAN

SCALE 1/8" = 1'-0"

NO.	DATE	DESCRIPTION	CHKD. BY	DEPT.	CHKD. BY	APVD. BY
1		CHECKS DEL. TO CHECKING				

TRACED BY J.S.
APVD. BY *Hosmer*
THIS DRAWING NOT TO BE USED FOR CONSTRUCTION WITHOUT PERMISSION BY

FOR GENERAL NOTES APPLYING TO THIS SHEET, SEE SHEET NO. 1.

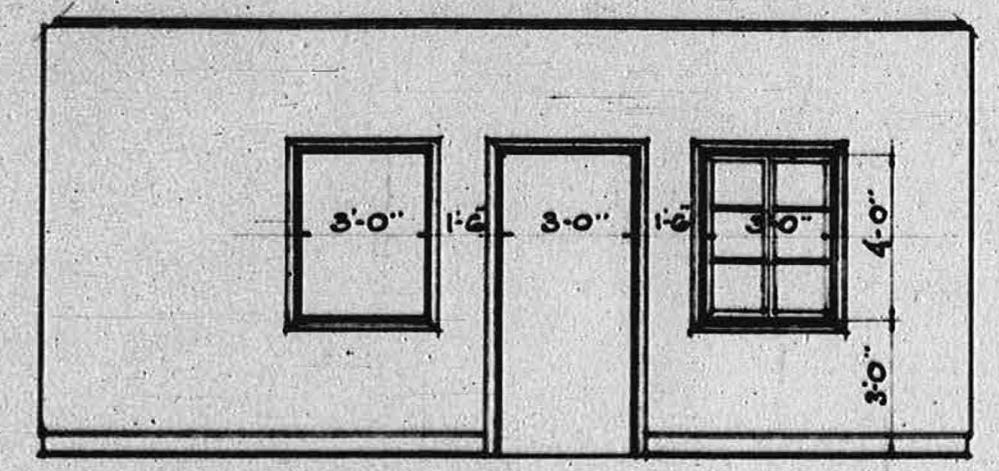
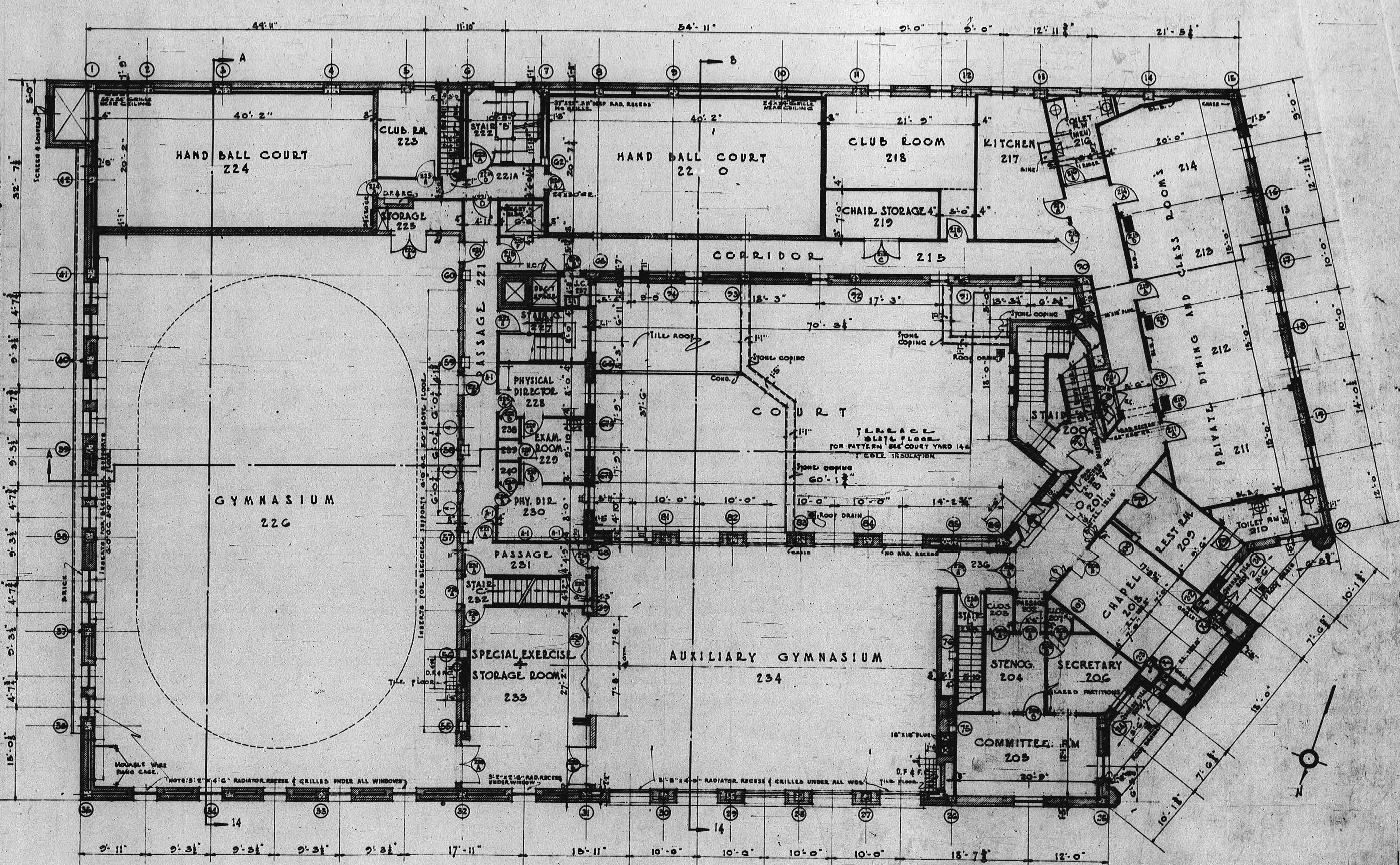
YMCA NORTHEASTERN BRANCH **FIRST FLOOR PLAN**

FILE NO. **6551**
SHEET **4**
DATE **9-18-58**

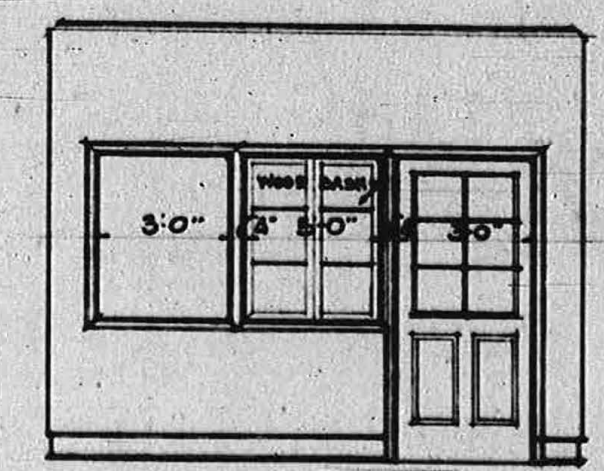
SMITH, HINCHMAN & GRYLLS
ARCHITECTS AND ENGINEERS
DETROIT, MICH.

DOOR	SYMBOL	REMARKS
1	1	1
2	2	2
3	3	3
4	4	4
5	5	5
6	6	6
7	7	7
8	8	8
9	9	9
10	10	10
11	11	11
12	12	12
13	13	13
14	14	14
15	15	15
16	16	16
17	17	17
18	18	18
19	19	19
20	20	20
21	21	21
22	22	22
23	23	23
24	24	24
25	25	25
26	26	26
27	27	27
28	28	28
29	29	29
30	30	30
31	31	31
32	32	32
33	33	33
34	34	34
35	35	35
36	36	36
37	37	37
38	38	38
39	39	39
40	40	40
41	41	41
42	42	42
43	43	43
44	44	44
45	45	45
46	46	46
47	47	47
48	48	48
49	49	49
50	50	50
51	51	51
52	52	52
53	53	53
54	54	54
55	55	55
56	56	56
57	57	57
58	58	58
59	59	59
60	60	60
61	61	61
62	62	62
63	63	63
64	64	64
65	65	65
66	66	66
67	67	67
68	68	68
69	69	69
70	70	70
71	71	71
72	72	72
73	73	73
74	74	74
75	75	75
76	76	76
77	77	77
78	78	78
79	79	79
80	80	80
81	81	81
82	82	82
83	83	83
84	84	84
85	85	85
86	86	86
87	87	87
88	88	88
89	89	89
90	90	90
91	91	91
92	92	92
93	93	93
94	94	94
95	95	95
96	96	96
97	97	97
98	98	98
99	99	99
100	100	100

FINISH	DETAIL	OR	SCHEDULE	ON	SECOND	FLOOR	LIMITS
1	1	1	1	1	1	1	1
2	2	2	2	2	2	2	2
3	3	3	3	3	3	3	3
4	4	4	4	4	4	4	4
5	5	5	5	5	5	5	5
6	6	6	6	6	6	6	6
7	7	7	7	7	7	7	7
8	8	8	8	8	8	8	8
9	9	9	9	9	9	9	9
10	10	10	10	10	10	10	10
11	11	11	11	11	11	11	11
12	12	12	12	12	12	12	12
13	13	13	13	13	13	13	13
14	14	14	14	14	14	14	14
15	15	15	15	15	15	15	15
16	16	16	16	16	16	16	16
17	17	17	17	17	17	17	17
18	18	18	18	18	18	18	18
19	19	19	19	19	19	19	19
20	20	20	20	20	20	20	20
21	21	21	21	21	21	21	21
22	22	22	22	22	22	22	22
23	23	23	23	23	23	23	23
24	24	24	24	24	24	24	24
25	25	25	25	25	25	25	25
26	26	26	26	26	26	26	26
27	27	27	27	27	27	27	27
28	28	28	28	28	28	28	28
29	29	29	29	29	29	29	29
30	30	30	30	30	30	30	30
31	31	31	31	31	31	31	31
32	32	32	32	32	32	32	32
33	33	33	33	33	33	33	33
34	34	34	34	34	34	34	34
35	35	35	35	35	35	35	35
36	36	36	36	36	36	36	36
37	37	37	37	37	37	37	37
38	38	38	38	38	38	38	38
39	39	39	39	39	39	39	39
40	40	40	40	40	40	40	40
41	41	41	41	41	41	41	41
42	42	42	42	42	42	42	42
43	43	43	43	43	43	43	43
44	44	44	44	44	44	44	44
45	45	45	45	45	45	45	45
46	46	46	46	46	46	46	46
47	47	47	47	47	47	47	47
48	48	48	48	48	48	48	48
49	49	49	49	49	49	49	49
50	50	50	50	50	50	50	50
51	51	51	51	51	51	51	51
52	52	52	52	52	52	52	52
53	53	53	53	53	53	53	53
54	54	54	54	54	54	54	54
55	55	55	55	55	55	55	55
56	56	56	56	56	56	56	56
57	57	57	57	57	57	57	57
58	58	58	58	58	58	58	58
59	59	59	59	59	59	59	59
60	60	60	60	60	60	60	60
61	61	61	61	61	61	61	61
62	62	62	62	62	62	62	62
63	63	63	63	63	63	63	63
64	64	64	64	64	64	64	64
65	65	65	65	65	65	65	65
66	66	66	66	66	66	66	66
67	67	67	67	67	67	67	67
68	68	68	68	68	68	68	68
69	69	69	69	69	69	69	69
70	70	70	70	70	70	70	70
71	71	71	71	71	71	71	71
72	72	72	72	72	72	72	72
73	73	73	73	73	73	73	73
74	74	74	74	74	74	74	74
75	75	75	75	75	75	75	75
76	76	76	76	76	76	76	76
77	77	77	77	77	77	77	77
78	78	78	78	78	78	78	78
79	79	79	79	79	79	79	79
80	80	80	80	80	80	80	80
81	81	81	81	81	81	81	81
82	82	82	82	82	82	82	82
83	83	83	83	83	83	83	83
84	84	84	84	84	84	84	84
85	85	85	85	85	85	85	85
86	86	86	86	86	86	86	86
87	87	87	87	87	87	87	87
88	88	88	88	88	88	88	88
89	89	89	89	89	89	89	89
90	90	90	90	90	90	90	90
91	91	91	91	91	91	91	91
92	92	92	92	92	92	92	92
93	93	93	93	93	93	93	93
94	94	94	94	94	94	94	94
95	95	95	95	95	95	95	95
96	96	96	96	96	96	96	96
97	97	97	97	97	97	97	97
98	98	98	98	98	98	98	98
99	99	99	99	99	99	99	99
100	100	100	100	100	100	100	100



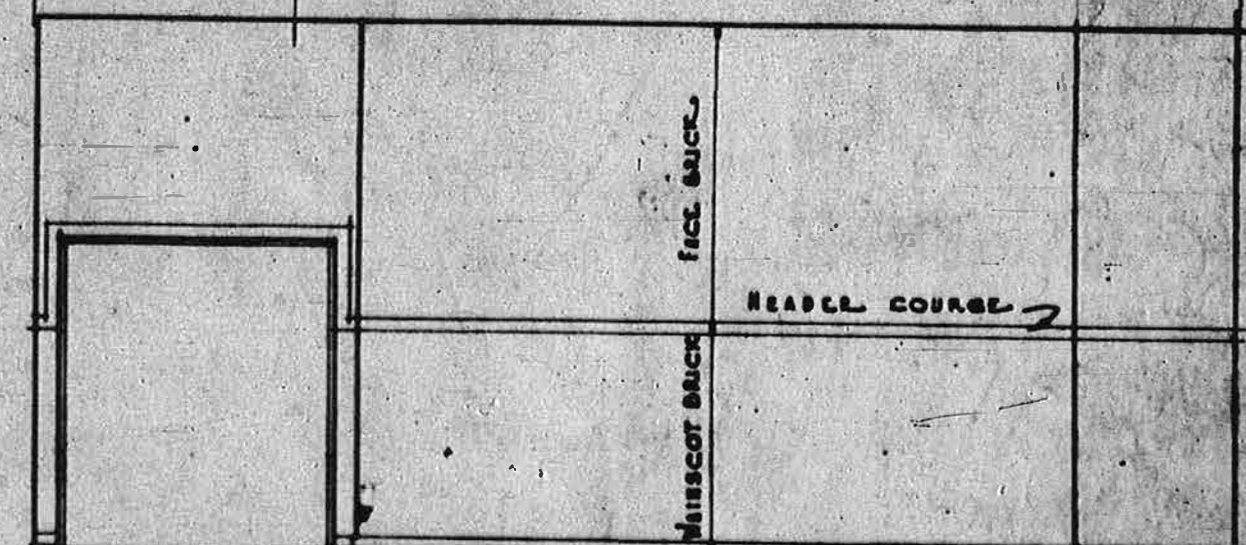
ELEVATION OF GLAZED PARTITION COMMITTEE ROOM



ELEVATION OF GLAZED PARTITION SECRETARY ROOM
SCALE 1/4" = 1'-0"



ELEVATION OF FOLDING DOORS ROOMS 211 TO 213



ELEVATION OF SPECIAL EXERCISE ROOM

SECOND FLOOR PLAN

FOR GENERAL NOTES APPLYING TO THIS SHEET, SEE SHEET NO. 1
YMCA NORTHEASTERN BRANCH | SECOND FLOOR PLAN

		SMITH, BUCHANAN & GRYLLS ARCHITECTS AND ENGINEERS DETROIT, MICH.	PLAN NO. 6551 SHEET 5 DATE 9-15-30
--	--	--	--

DATE	DESCRIPTION	BY	CHECKED BY	APPROVED BY
9-15-30	CHANGES UP TO CHECKING	L.S.	L.S.	L.S.

