

Brightmoor

AREA FRAMEWORK PLAN

~~~~~  
Parks Focus Group

Eliza Howell Park

Stoepel  
Park No. 1

# Welcome!

# Welcome + Introductions

*Thank you for attending this meeting!*

Our **MC** today:

**Dave Walker**

Our **speakers** today:

- **Sonali Patel, DWSD**
- **Theresa McArleton, GSD**
- **Jill Dixon, Agency  
Landscape + Planning**

# Today's Agenda

(6 - 7:30 pm)

- **Welcome** + Introduction: *10 minutes*
- **Presentation**: *15 minutes*
  - Project schedule recap
  - Review **what residents have shared** about parks to date
  - Discuss the state of **Brightmoor's parks** today
- **Discussion of parks opportunities** : *1 hour*
- **Wrap up + Next Steps**: *5 minutes*

**“Parking lot”** for other ideas outside of today's focus on parks will be recorded.

# Today's meeting will focus on ...

## Parks



## Other Publicly Accessible Green Spaces & Gardens



## Greenways



## Arts, Culture, and Wayfinding

## Recreation



# Icebreaker - Warm Up



**What are your Top 3 favorite things to do related to parks and recreation?**

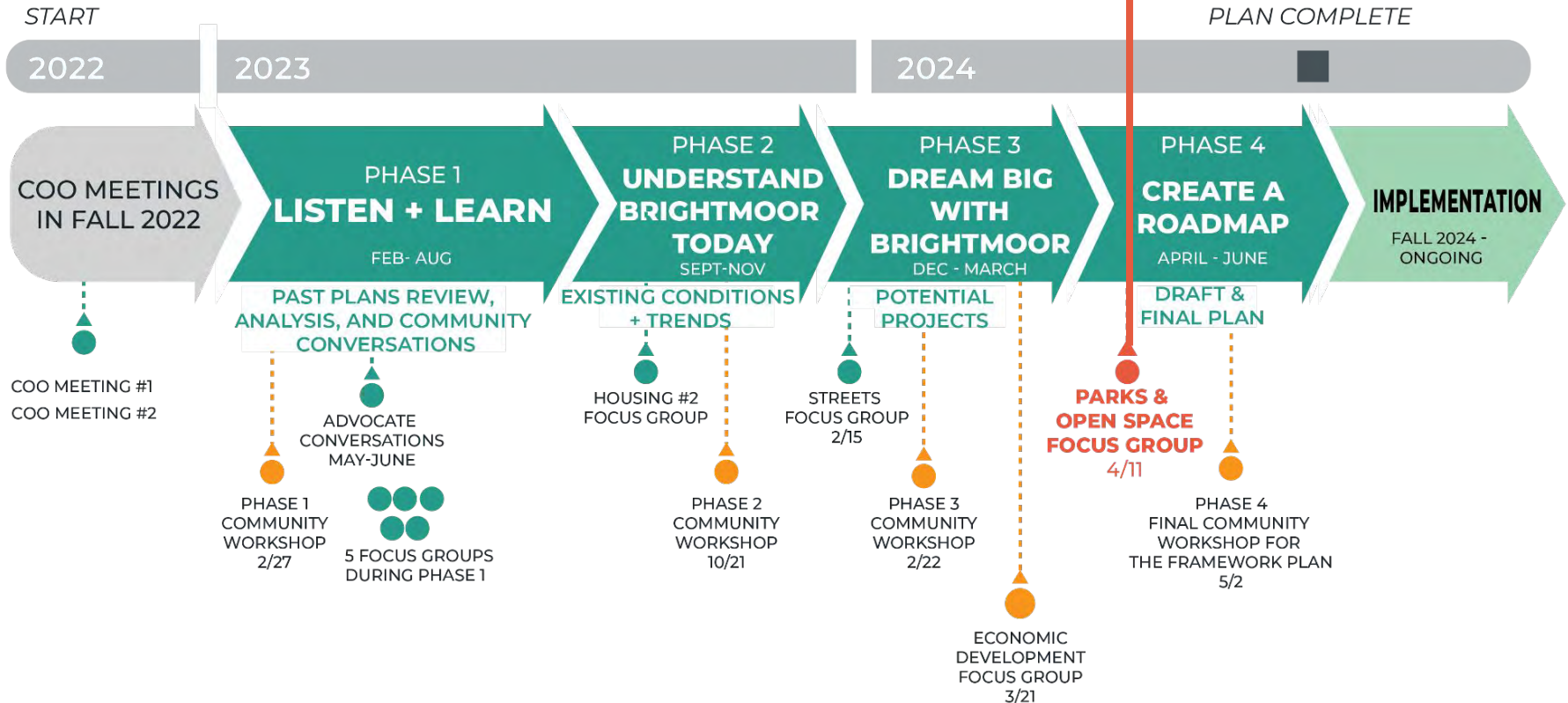
*For example:*

- A. Outdoor sports
- B. Hang out with friends and family
- C. Relax
- D. Exercise / fitness
- E. Enjoy time in nature
- F. Indoor recreation
- G. Community events
- H. Arts and culture activities
- I. Other:

# Project Timeline

Your feedback today will inform parks recommendations.

We are here





What have  
**Brightmoor residents**  
shared so far?

# Phase 3 Workshop Recap

Thank you for participating in the Phase 3 open workshop in February! Attendees joined to review feedback to date and prioritize potential projects.

The Top 5 projects receiving the most “high priority votes” included:

- **Dumping Reduction**
- **Safer Streets Initiative**
- Supporting new **development along Fenkell**
- **Basic needs and health partnerships**
- **Assistance for homeowners, renters, and unhoused community members**





# Economic Development Focus Group Recap

Thank you for participating in the Economic Development Focus Group in March. Attendees joined to discuss opportunities for economic development in the Brightmoor area.

Some key takeaways from the meeting included:

- Further coordination with **property owners** and **Fenkell Business Association** would be welcomed
- Interest in **Motor City Match** participation
- Desire for a variety of **job training** options; consider hosting these at Crowell and other community centers to allow for child care support during the programs

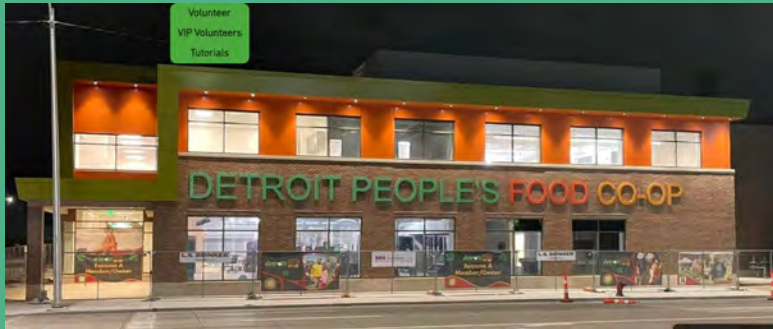


# Co-ops, CLTs, and Alternative Economic Models

## COOPERATIVES (CO-OPS)

**Objective:** Create a membership-based business model that can provide retail or services that the private market may not supply on its own.

**Example:** Detroit People's Food Co-op; Detroit Black Community Food Sovereignty Network (DBCFSN).



## COMMUNITY LAND TRUSTS (CLTs)

**Objective:** Enable community ownership and control of land to create long-term affordability for housing, and sometimes for businesses as well.

**Example:** Indus Detroit Artist Residency, Dream Community Land Trust



# Co-ops and CLTs



**Would you be interested in hearing more about co-ops or community land trusts, and how they might work in Brightmoor?**

- A. Yes**
- B. No**
- C. I'm not sure - I have more questions**

# Add your input about economic development strategies

## Missed the Economic Development workshop?

Here are links where you can access the materials and share your top priorities.

## Economic Development Survey



[www.tinyurl.com/  
BrightmoorEconDev](http://www.tinyurl.com/BrightmoorEconDev)

Open through 4/19

## Visit the project website to access the presentation and meeting recording



[www.detroitmi.gov/brightmoor](http://www.detroitmi.gov/brightmoor)

# What residents have shared about parks, recreation, and arts/culture so far

Brightmoor community members have given feedback about economic development throughout the planning process, including at the **Kickoff, Online Survey, Focus Groups, and Phase 2 and 3 Public Workshops.**

Feedback has included a focus on **youth + teen activities, calming and healing parks, connecting residents, supporting arts and culture, and green connections.**



# What residents have shared about parks and recreation so far

At community workshops and prior focus groups, attendees highlighted ideas including **non-motorized connections and safe walking routes, natural spaces, incorporating the arts,** and creating **more positive things to do for youth and teens.**



What is the experience of  
**parks and recreation** in the  
Brightmoor area today?

# Brightmoor has a variety of city parks

Eliza Howell Park



Stoepel Park No. 1



Crowell Rec Center



Optimist Stout Playground



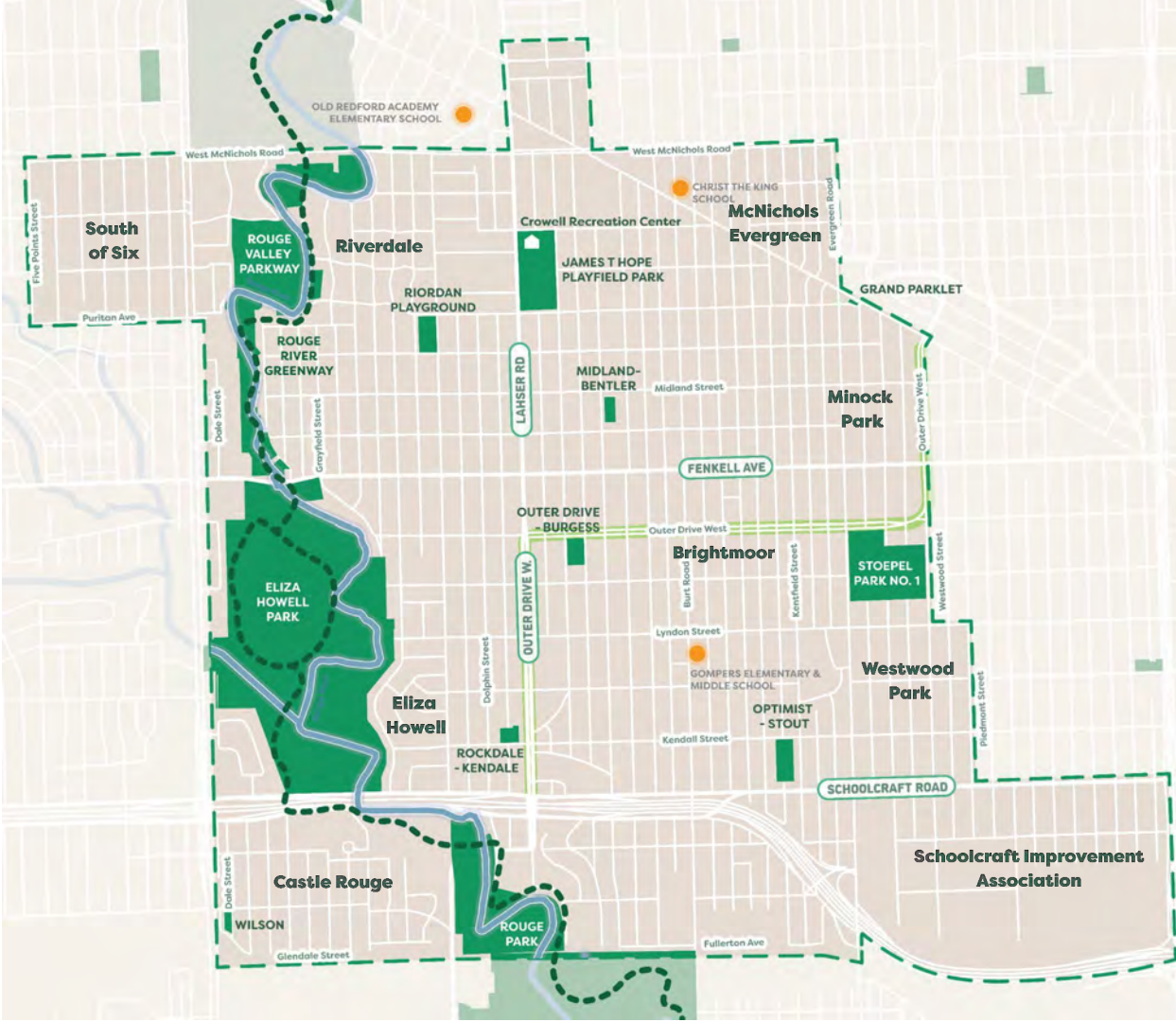
Riordan Playground





# City Parks Map

City of Detroit parks are well distributed throughout the Brightmoor area



# Park Access

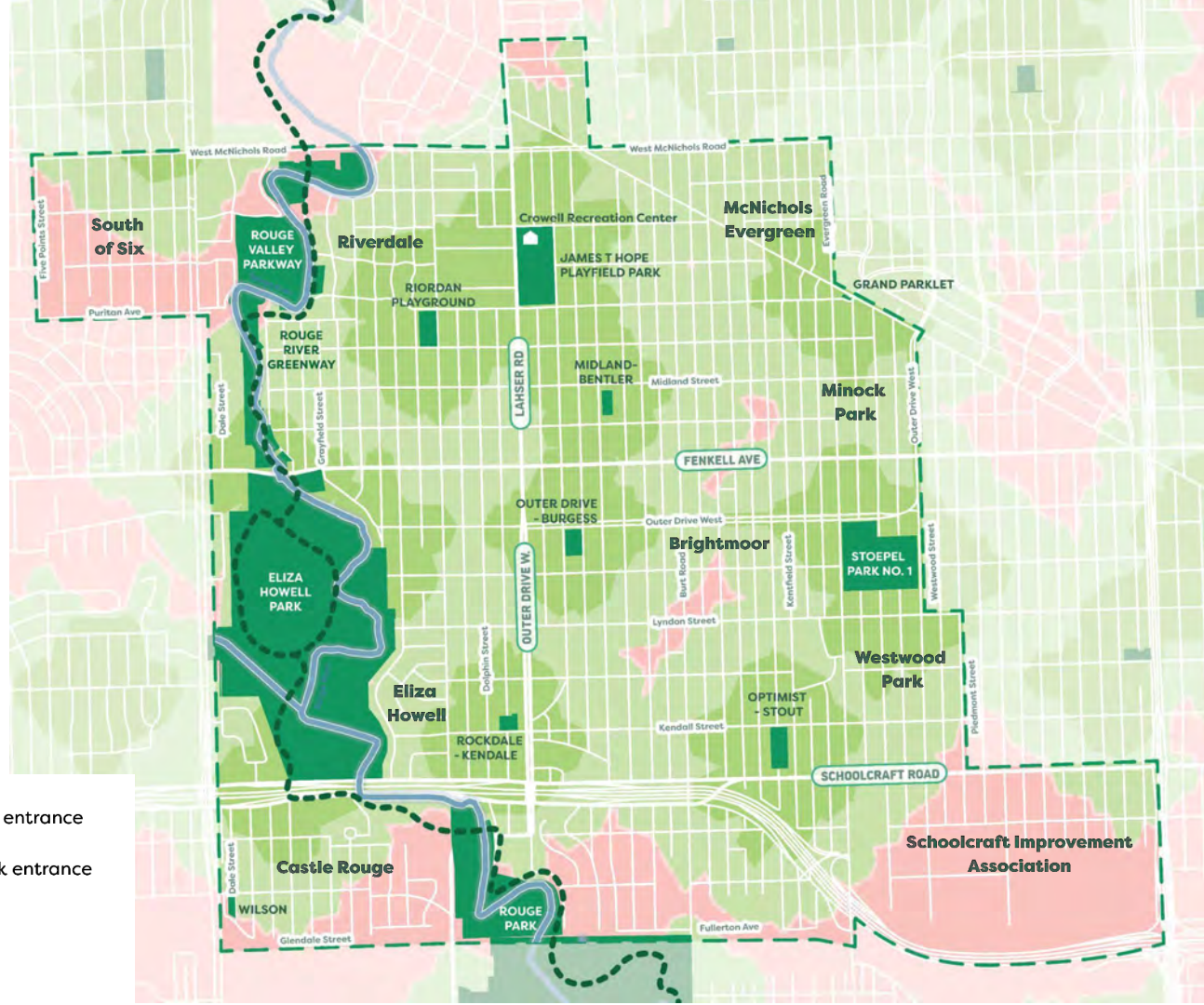
Most residents live within a 10 minute walk of a park. However, safety concerns are a barrier for walkability.

Feel unsafe walking past vacant homes and vacant lots

I avoid walking along main roads because of the fast traffic and noise pollution

Typically avoid walking along neighborhood roads because of deer and stray dogs

- 5 min walk to park entrance
- 10 min walk to park entrance
- Park gaps
- City-owned parks



# Community-created green spaces



Etheldra Mae  
Williams Park



Urban Country  
Tea House



Cross Pollination  
Corridor



Detroit Repatched



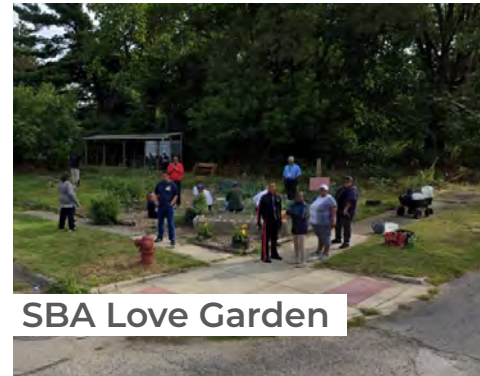
James W.  
Brogdon, Jr. Park



Ms. Gwen's Edible  
Playscape



Butterfly Park



SBA Love Garden

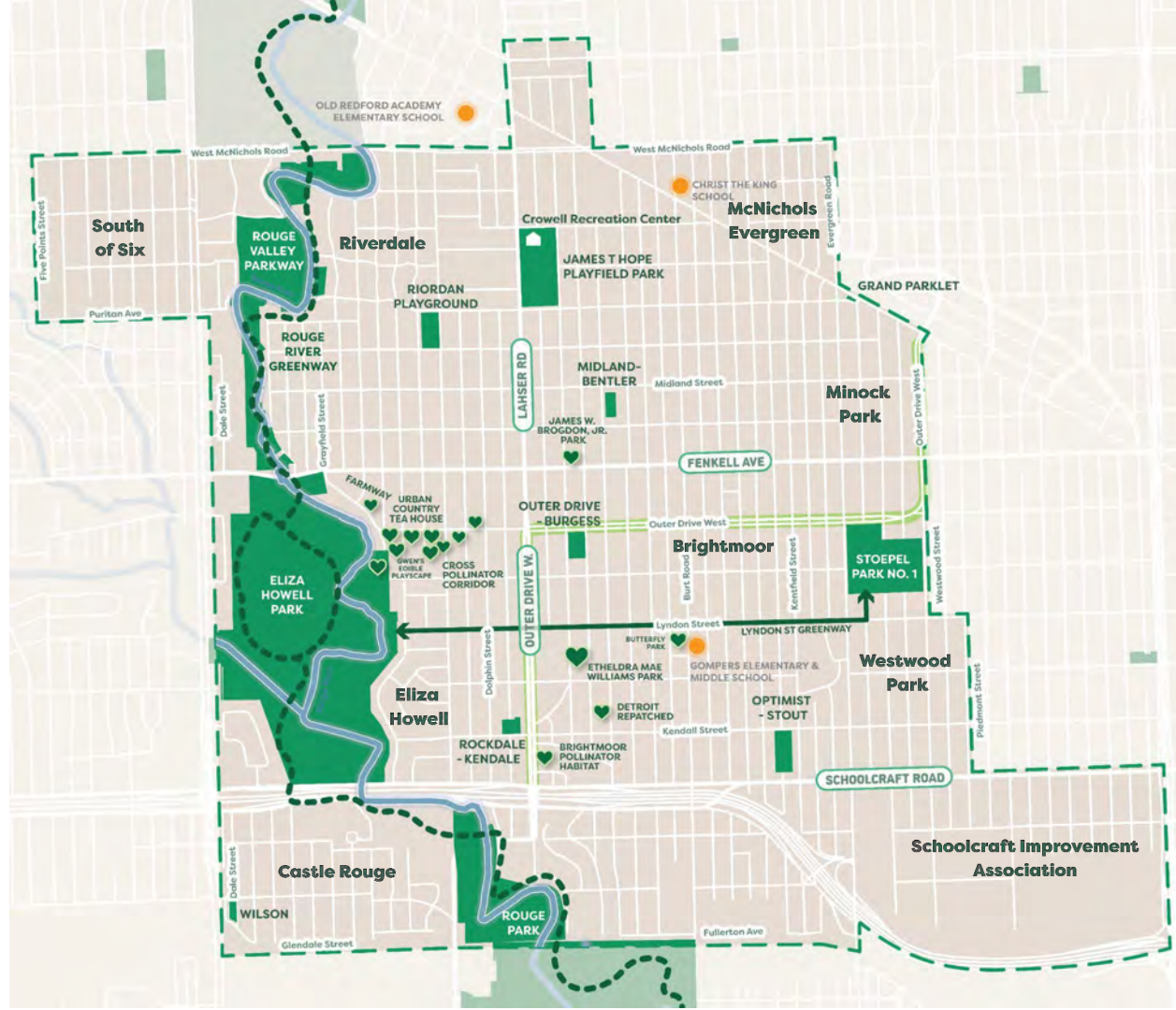
And **MANY** others!

# Parks and Public Open Space Network

Community-created green spaces and gardens enrich the neighborhood.

These spaces add more places to gather, connect, play, and enjoy peaceful moments in nature.

-  CITY PARKS
-  COMMUNITY CREATED GREEN SPACES
-  EXISTING GREENWAY
-  ROUGE RIVER GREENWAY (FUTURE)



# Parks, Open Space, and Recreation Needs



## Community Needs

- Youth spaces and activities
- Multigenerational parks
- Inclusive, calming parks
- Safe walking routes to parks



## Environment Needs

- Healthy community: clean air, water, land, shade
- Hold rainwater and reduce flooding
- Spaces for wildlife
- Adapt to changing climate

# Parks and Recreation Needs



## QUESTION #2:

**What's missing for parks and recreation that you / your family would like to do?**

- A. Parks for all abilities (ex. improved ADA access, inclusive playgrounds)
- B. More playgrounds
- C. More places to play sports – *which ones?*
- D. More spaces to hang out with friends and family
- E. More youth and teen activities and programs
- F. More community gathering spaces and events
- G. Safer walking routes to parks
- H. Quality of parks / park maintenance
- I. Other

What are **opportunities** for parks, recreation, and arts/culture in Brightmoor?





# Connected Network of Parks and Gathering Spaces



## **Park opportunity topics**

- **Existing City Park Projects**
- **Stormwater Projects**
- **Connected Park Network**
- **Arts, Culture, and Wayfinding**
- **Other Park Opportunities**

---

# Current / Upcoming GSD Projects

# Stoepel Park No. 1



# Eliza Howell

## Recent and upcoming improvements

- **Road improvements**
  - Improved vehicular circulation (partial two-way stretch)
  - Protected bike lanes / shared-use loop path
  - Grass/planted median
- **State Grant received for "nature play and access"**
  - *Upcoming community meeting on 4/30*
- **Upcoming master plan process** - *engagement process will begin in fall*



## Current / Planned Projects



**What questions do you have for GSD  
about upcoming park projects?**

---

# Stormwater Projects

# Fenkell Stormwater Project



Implementation of 20 bioretention practices including one street vacation – planting ~300 trees



\$3.4M project partially grant funded



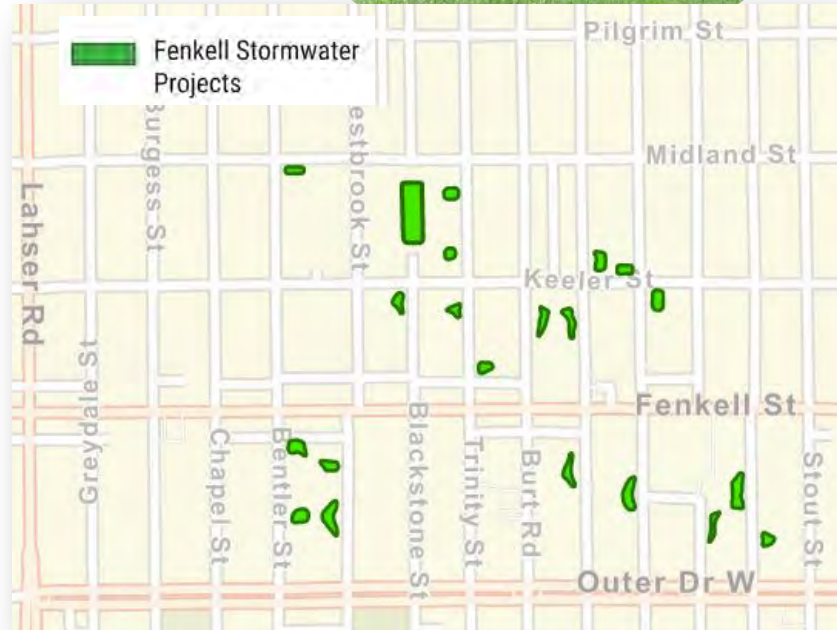
Manages stormwater runoff from roughly 50 acres



Manages 9 million gallons of stormwater annually



Benefits hundreds of homes in close proximity (neighborhood beautification investments, habitat, etc.) and reduces flooding for the entire neighborhood





# Fenkell Stormwater Project

**Community Feedback** - On September 7, 2023, DWSD held an open house to collect community feedback on design of the Fenkell bioretention practices. The community shared its preferences by using sticker voting and written comments.

|                              | Design 1                           | Design 2       |
|------------------------------|------------------------------------|----------------|
| <b>Plant Arrangement</b>     | Small groups of repeating patterns | Structured     |
| <b>Garden Layout Shape</b>   | Circular                           | Circular       |
| <b>Berms</b>                 | Towards backyards                  | No berms       |
| <b>Edging</b>                | Concrete                           | Concrete       |
| <b>Proximity to Sidewalk</b> | Close to sidewalk                  | Offset         |
| <b>Lawn Type</b>             | Turf grass                         | Pollinator mix |



# Large-Scale Green Stormwater Infrastructure

DWSD is proposing a large-scale GSI project in Brightmoor which would improve the greenspace within the project boundary and provide functional amenities based on community feedback.

DWSD is currently meeting with property owners within the proposed project area. If property owner approval is received and DWSD can move forward with the project, there will be extensive community outreach to discuss the project amenities and design preferences.



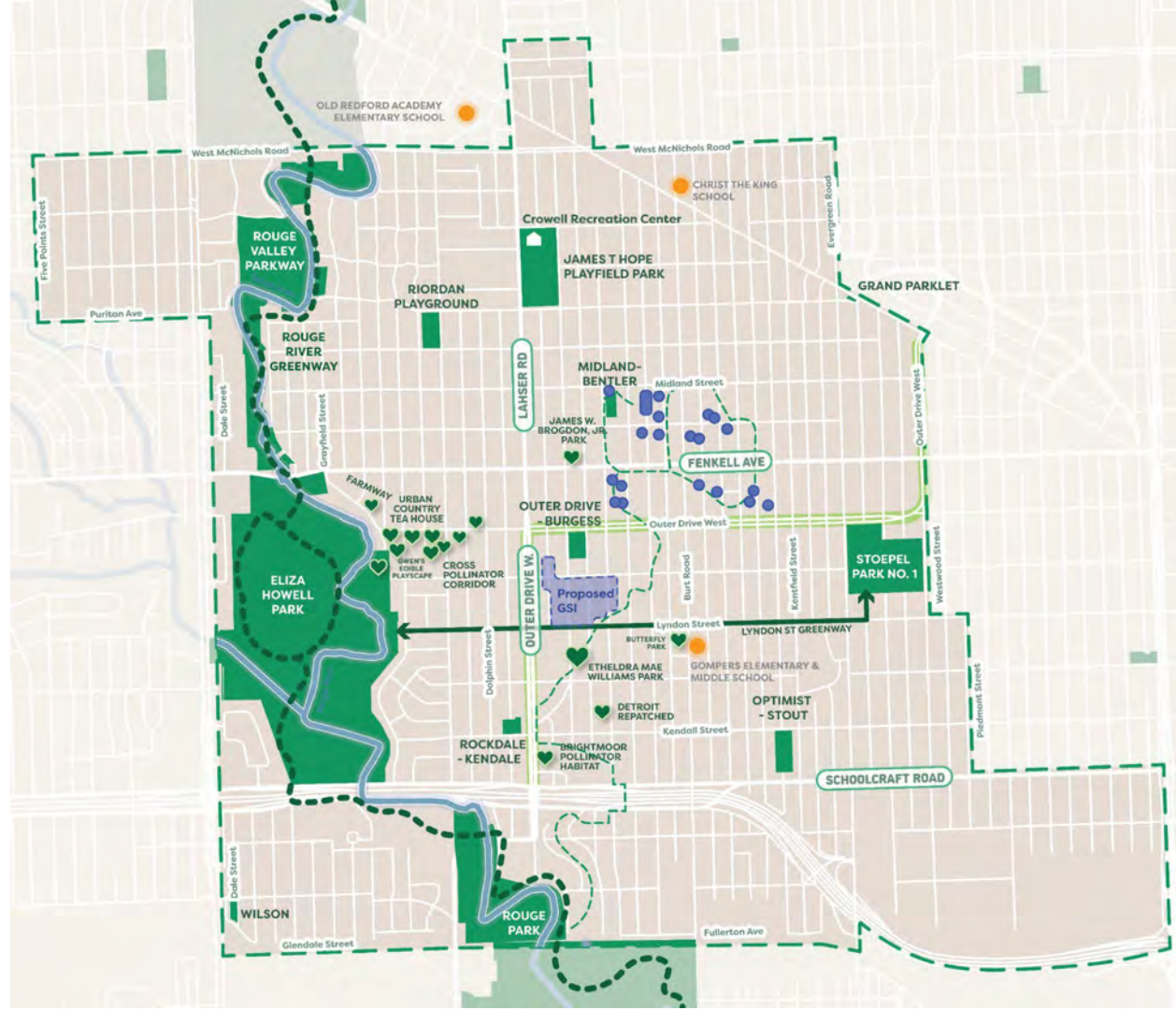
*Example of large-scale GSI – Far West Detroit Stormwater Improvement Project located in Rouge Park at W Warren and W Outer Drive.*

---

# Connected Park Network

# Connected Greenway & Walking Routes

- Lyndon St Greenway
- Rouge River Greenway
- Outer Drive Greenway
- Stormwater Loop?
- Other new connections?



# Connected Greenway Network



QUESTION #3:

**What destinations are most important to connect?**  
(Other suggestions are welcome!)

**Parks +  
Crowell**



**Schools**



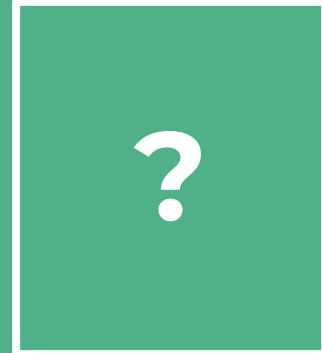
**Commercial  
Streets**



**Community  
Green Spaces**



**Other?**



---

# Arts, Culture, and Wayfinding

# Existing Arts & Culture



Etheldra Mae Williams Park



Near Motor City Java House



Photo by Cheryl Willard



Photo by Live Coal.org



Photo by LaGaspia McDougle



Etheldra Mae Williams Park



Near Urban Country Tea House

# Arts, Culture, and Wayfinding



QUESTION #4:

What types of arts, culture, and wayfinding would you like to see more of in the Brightmoor area?



**Murals**



**Spaces for  
Performance Art**



**Arts Programs  
and Activities**



**Sensory/Healing  
Arts**



**Public Art in Parks**



**Public Art  
along Fenkell**



**Fenkell Branding /  
Wayfinding**



**Other**



---

Other Park Opportunities?

# Other Ideas



## QUESTION #5:

**What else would you like to see in the Brightmoor area ...**

**For parks and other public open spaces?**

**For recreation programs and activities?**

**For events?**

**For arts, culture, and wayfinding?**

Wrap up + Next Steps

# Next Steps + Upcoming Meetings

Your feedback today will inform the framework plan's draft recommendations for parks, recreation, arts and culture.

Please share any additional suggestions for economic development with Dave Walker ([walkerdav@detroitmi.gov](mailto:walkerdav@detroitmi.gov))

Today's slide deck, meeting recording, "parking lot" notes, and feedback will be uploaded to the project website by 4/26.

Join us for our upcoming Community Workshops at Crowell on 5/2!

- For more information, visit: [www.detroitmi.gov/brightmoor](http://www.detroitmi.gov/brightmoor)

THE CITY OF DETROIT INVITES YOU TO ATTEND THE  
**UPCOMING BRIGHTMOOR FRAMEWORK MEETINGS**

----- TOPIC-BASED FOCUS GROUP -----

**FEB 15**  
6-7:30p  
**STREETS FOCUS GROUP (Virtual)**  
*Zoom Link: [bit.ly/brightmoorstreets](https://bit.ly/brightmoorstreets) - Meeting ID: 288 261 5951*  
Join us online to discuss street safety, comfort, and maintenance concerns for Brightmoor and share ideas for the future.

**MAR 21**  
6-7:30p  
**ECONOMIC DEVELOPMENT FOCUS GROUP**  
*at Crowell Rec Center - 16630 Lahser Rd*  
Join us to share your ideas and feedback on business support and development in Brightmoor and along corridors like Fenkell Ave.

**APR 11**  
6-7:30p  
**PARKS & OPEN SPACE FOCUS GROUP**  
*at Crowell Rec Center - 16630 Lahser Rd*  
Join us in person to discuss what you would like to see for the future of Brightmoor's parks and open spaces.

----- COMMUNITY WORKSHOPS -----

**FEB 22**  
6-8:00p  
**FEBRUARY COMMUNITY WORKSHOP**  
*at Crowell Rec Center - 16630 Lahser Rd*  
Join us for our Phase 3 community workshop, an open house event similar to Workshop #2, from 6 to 8 pm. We'll review previous engagement feedback and welcome input from community members on the vision, goals, and strategies for the plan.

**MAY 02**  
6-8:00p  
**FINAL COMMUNITY WORKSHOP**  
*at Crowell Rec Center - 16630 Lahser Rd*  
Join our final community workshop this spring to review community-driven framework recommendations, and give your thoughts on what you'd like to see happen first.

**For more information, visit: [www.detroitmi.gov/brightmoor](http://www.detroitmi.gov/brightmoor)**

With advance notice of seven calendar days, the City of Detroit will provide interpreter services at public meetings, including language translation and signage for the hearing impaired. Please contact the Planning and Development Department at (313) 224-1339 to schedule these services.

# 5/2 Meeting Agenda

- **Welcome + Introductions**
- **Future Vision** for the Brightmoor Area & Draft Recommendations
  - **Beautiful Cared for Community**
    - Draft Recommendation Ideas
  - **Basic Needs and Community Resources**
    - Draft Recommendation Ideas
  - **Affordable, Quality Housing**
    - Draft Recommendation Ideas
  - **Wealth Creation + Economic Opportunities**
    - Draft Recommendation Ideas
  - **Sense of Community**
    - Draft Recommendation Ideas
- **Next Steps**
- **Further Feedback & Discussion**

# Share Your Input

Today's  
Questions



[www.tinyurl.com/  
BrightmoorParks](http://www.tinyurl.com/BrightmoorParks)

Open through  
5/6

Economic  
Development  
Survey



[www.tinyurl.com/  
BrightmoorEconDev](http://www.tinyurl.com/BrightmoorEconDev)

Open through  
4/19

Student  
Mobility Survey



[www.tinyurl.com/  
BrightmoorStudents](http://www.tinyurl.com/BrightmoorStudents)

Open through 4/15

Thank You