

Welcome! We will begin at 6:05, but in the meantime, let's get acquainted!

The image shows a Zoom meeting interface. The main content is a slide with a blue background and a map of the Brightmoor area. The slide text reads: **Brightmoor** AREA FRAMEWORK PLAN, Environmental Safety Focus Group, April 5 2023. The map includes labels for Eliza Howell Park and Stoepel Park No. 1. A dashed arrow points from a person icon in the top right of the slide to the chat window on the right. The chat window is titled 'Chat' and contains the text 'Add comments and your answers to our questions here!' followed by three input fields. At the bottom, the Zoom control bar is visible, with the 'Chat' icon circled in yellow.

Using the Chat, please tell us your name and favorite spot in the neighborhood!

Brightmoor

AREA FRAMEWORK PLAN

Environmental Safety Focus Group

April 5 2023

Eliza Howell Park

Stoepel
Park No. 1

TODAY'S AGENDA

~~~~~  
Welcome

*(10 mins)*

Project Overview

*(5 mins)*

Community Meeting #1 Feedback Summary

*(5 mins)*

Defining Environmental Safety **POLLS!**

*(10 mins)*

Demographic Safety: Comfort by Cohort **POLLS!**

*(10 mins)*

Safe Journeys **BREAKOUT ACTIVITY**

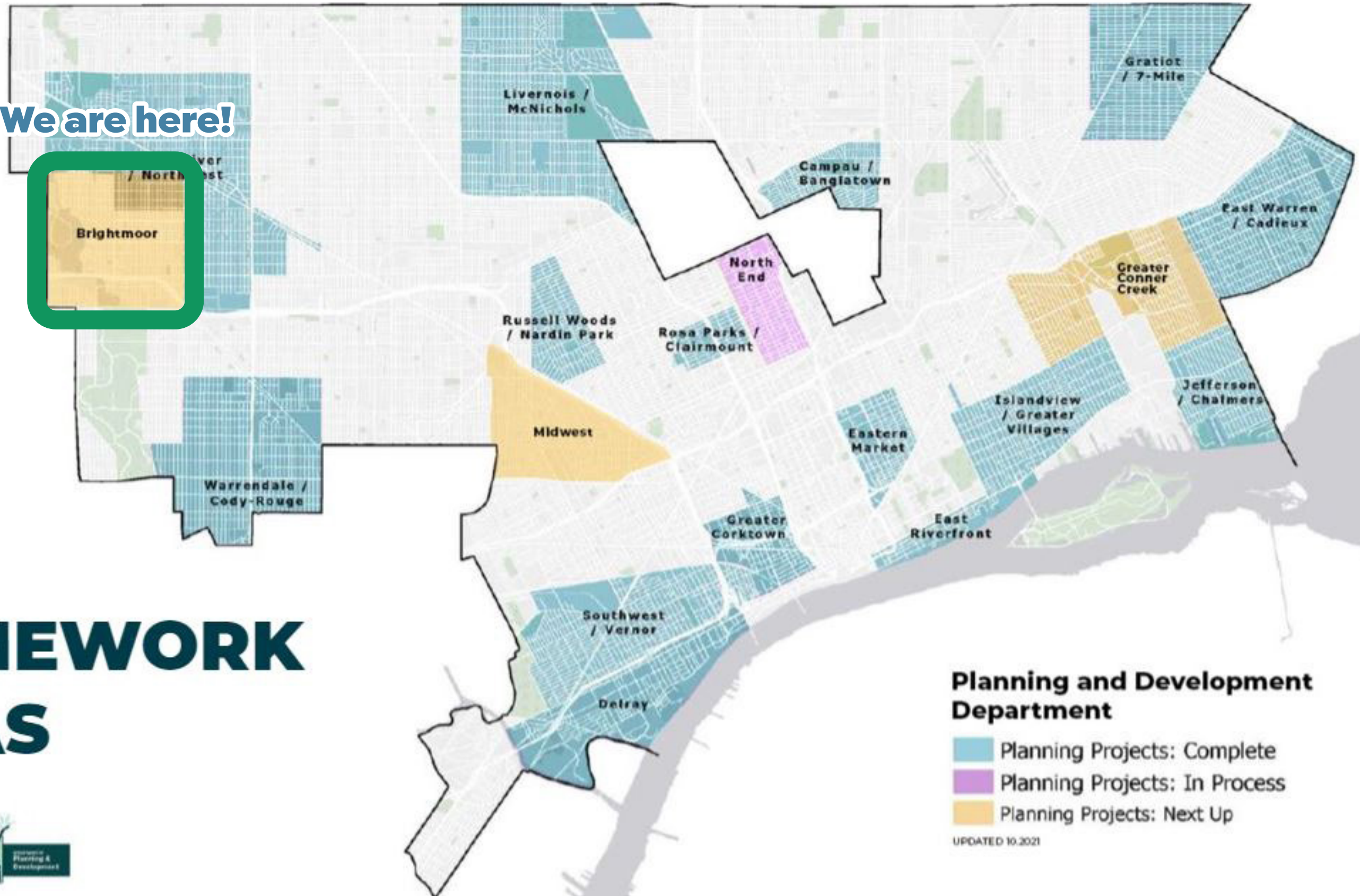
*(25 mins)*

Report Back **DISCUSSION**

*(10 mins)*

# PROJECT OVERVIEW

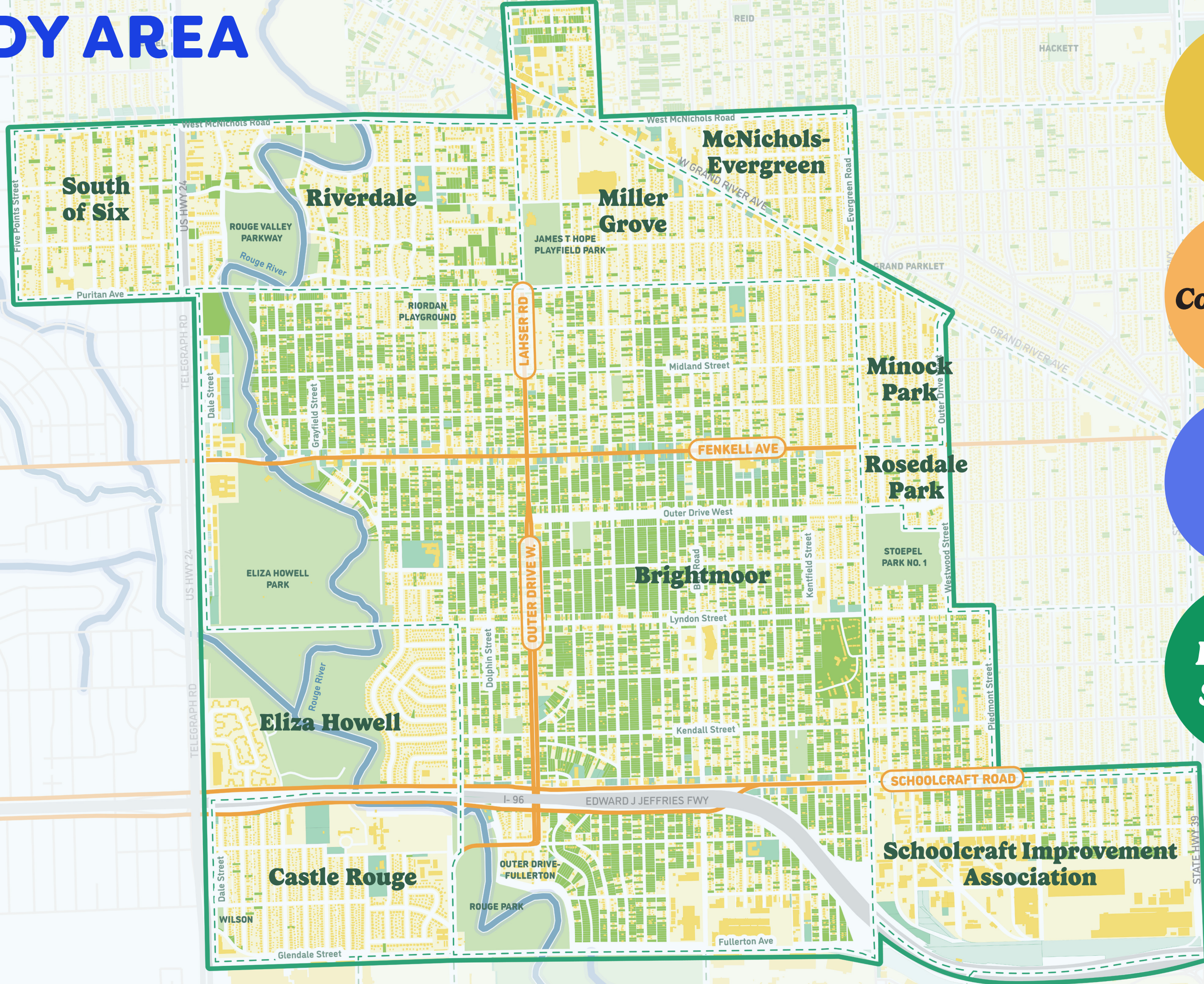
We are here!



## FRAMEWORK AREAS



# STUDY AREA



**Home**

**Community**

**Water**

**Parks + Streets**

# COMMUNITY MEETING #1

**65** attendees

**46** comment cards submitted

**74** feedback flags

Public safety  
+ blight

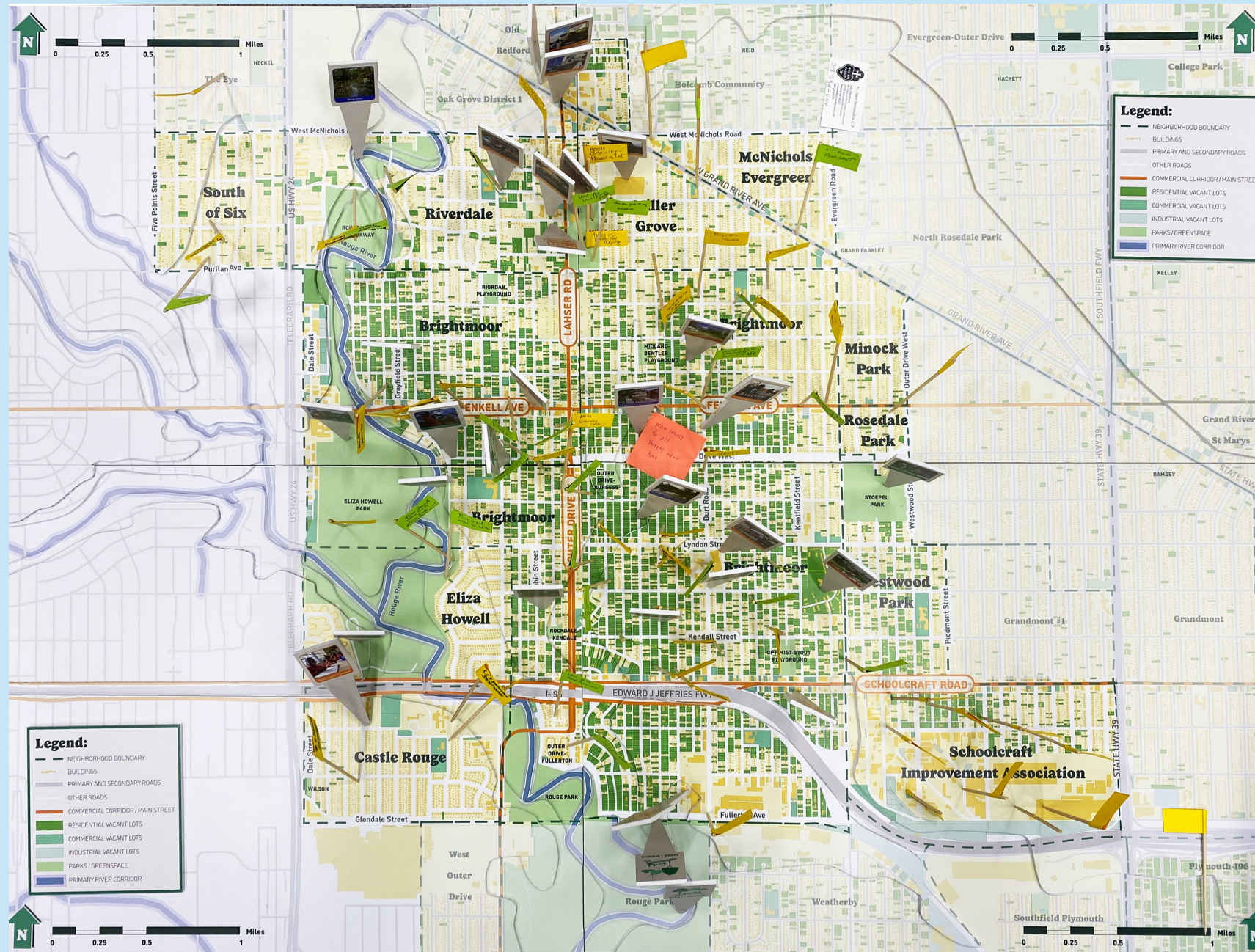
Meeting  
frequency

Affordable  
housing

Transparency  
within the  
planning  
process



# COMMUNITY MEETING #1: MAP FEEDBACK



## COMMON THEMES

MORE AFFORDABLE AND MORE DIVERSE HOUSING

IDEAS ABOUT THE FENKELL CORRIDOR

CONCERNS ABOUT BLIGHT, DUMPING, AND SAFETY

AREAS WHERE THERE IS FREQUENT FLOODING IN STREETS AND PARCELS

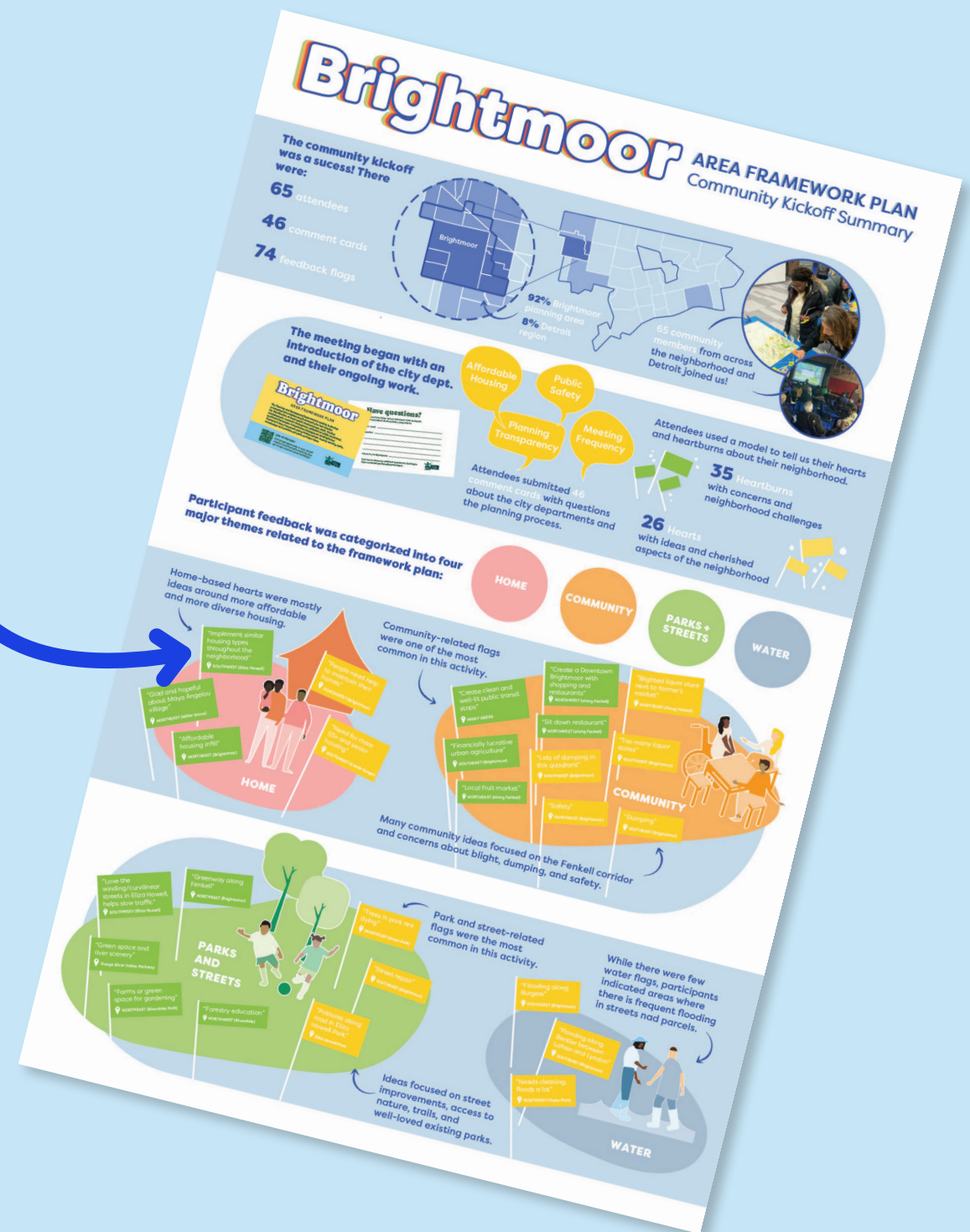
NEED FOR STREET IMPROVEMENTS

ACCESS TO NATURE/TRAILS AND WELL-LOVED EXISTING PARKS

# VISIT THE BRIGHTMOOR WEBSITE TO READ THE FULL SUMMARY OF COMMUNITY FEEDBACK AND TO STAY IN THE LOOP!



Visit [bit.ly/brightmoorfp](https://bit.ly/brightmoorfp) or scan the QR code for more information about the plan and to stay tuned for future workshops!





# **WHAT IS ENVIRONMENTAL SAFETY?**



**PUBLIC  
SAFETY  
POLICE**



**ENVIRONMENTAL  
SAFETY**



**PUBLIC  
SAFETY  
POLICE**



**ENVIRONMENTAL  
SAFETY**

**Today's  
focus!**

# PRINCIPLES FOR ENVIRONMENTAL SAFETY



## ATTENDANCE

*crowd size and amount of people around*



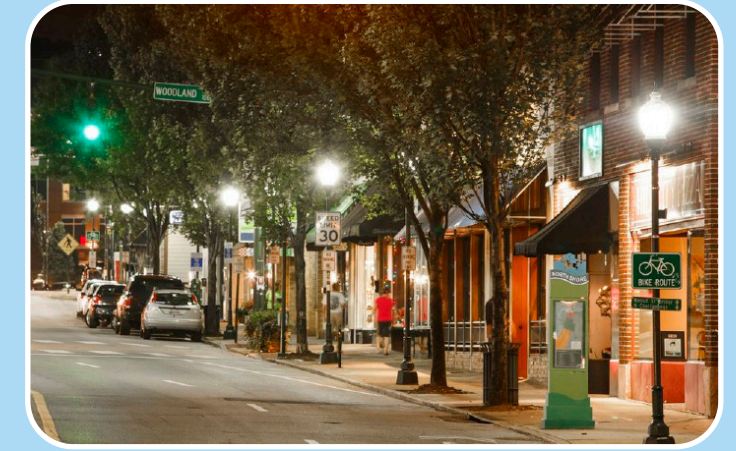
## DIVERSITY

*concentration of varied activities for all ages*



## SAFE ROUTES

*multiple ways to reach a destination*



## VISIBILITY

*ability to see and be seen, unobscured awareness of surroundings*



## ATTRACTIVENESS

*clean, well maintained, aesthetically pleasing and legible spaces*



## COMMUNITY CARE

*high quality spaces create a commitment to maintenance and the common good by citizens, business owners and neighborhood officials*

# POLL!

## What does a safe public realm mean to you?

*Choose the safety principles that resonate with you or select “other” to tell us in your own words in the chat!*



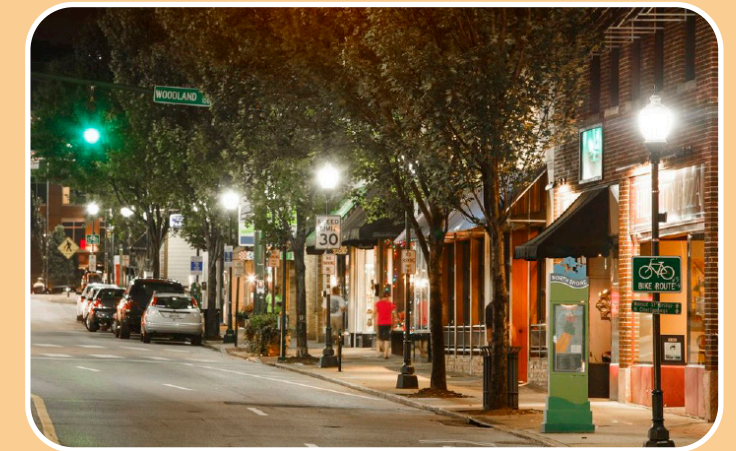
**ATTENDANCE**



**DIVERSITY**



**SAFE ROUTES**



**VISIBILITY**



**ATTRACTIVENESS**



**COMMUNITY CARE**

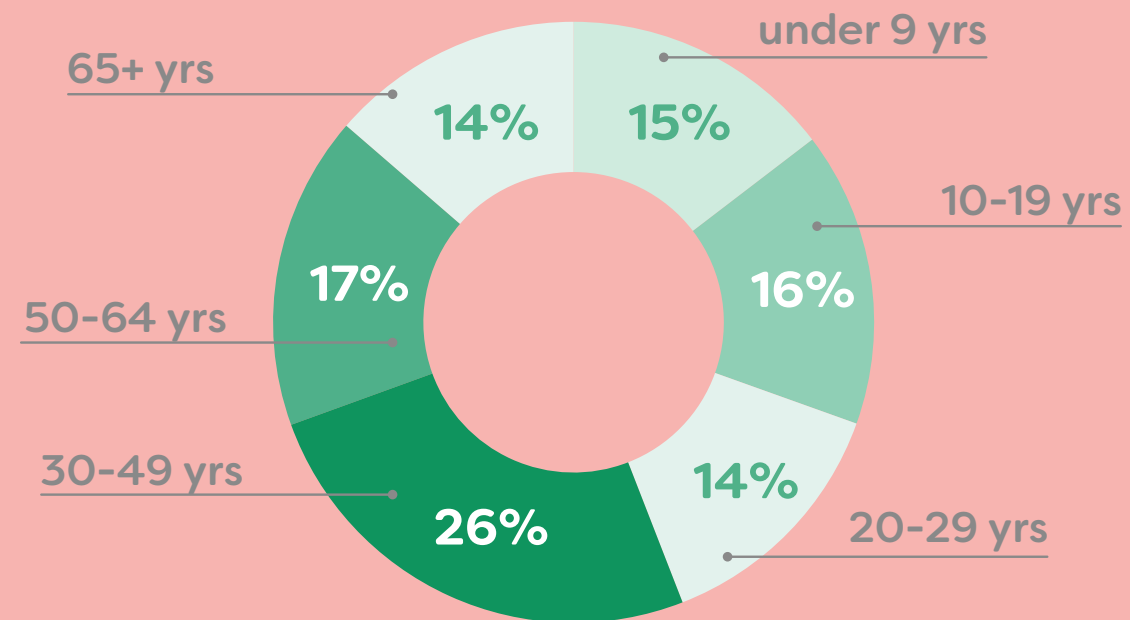


**OTHER (tell us in chat!)**

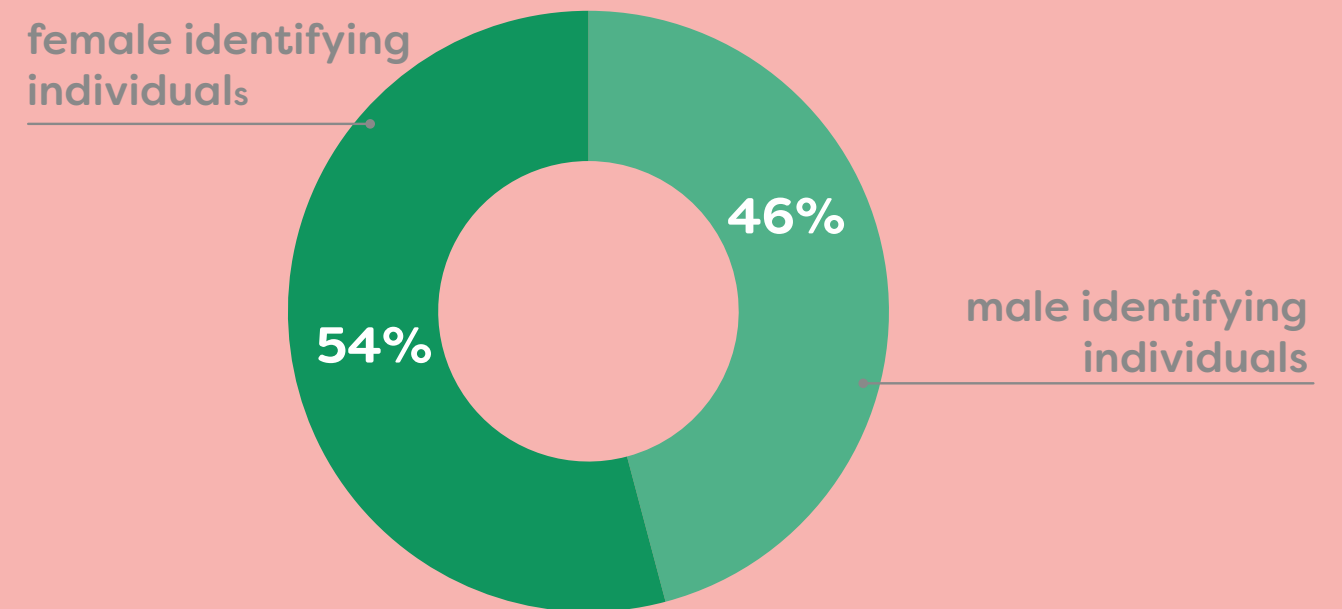
# COMFORT BY COHORT

# WHO LIVES IN THE BRIGHTMOOR AREA?

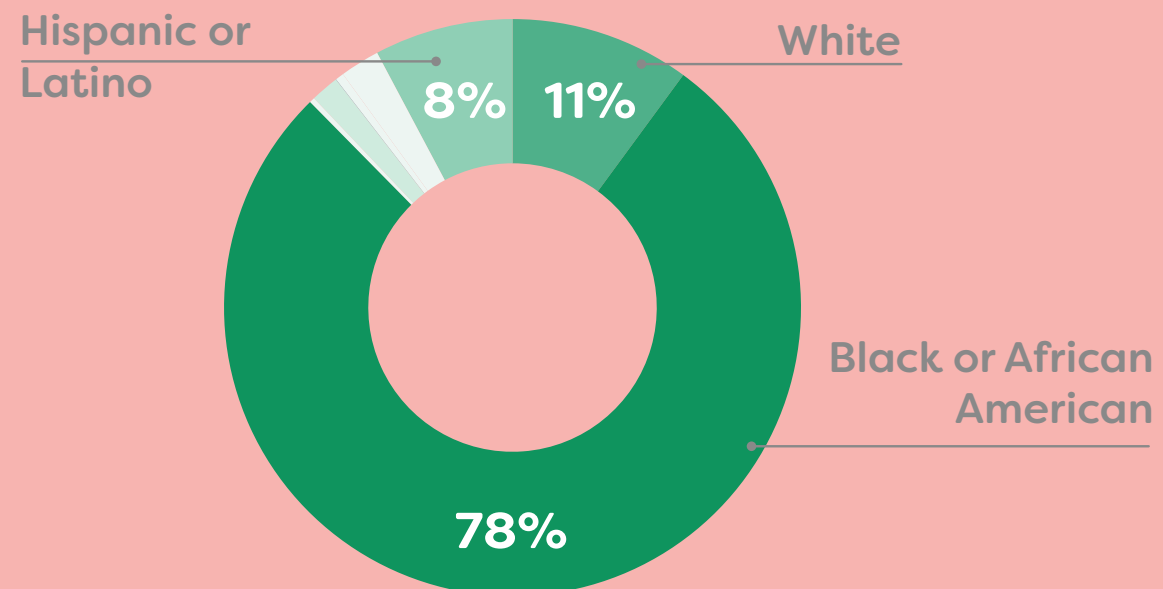
Working adults and teens are the largest age group in the neighborhood



Women make up the majority of the neighborhood's gender identity

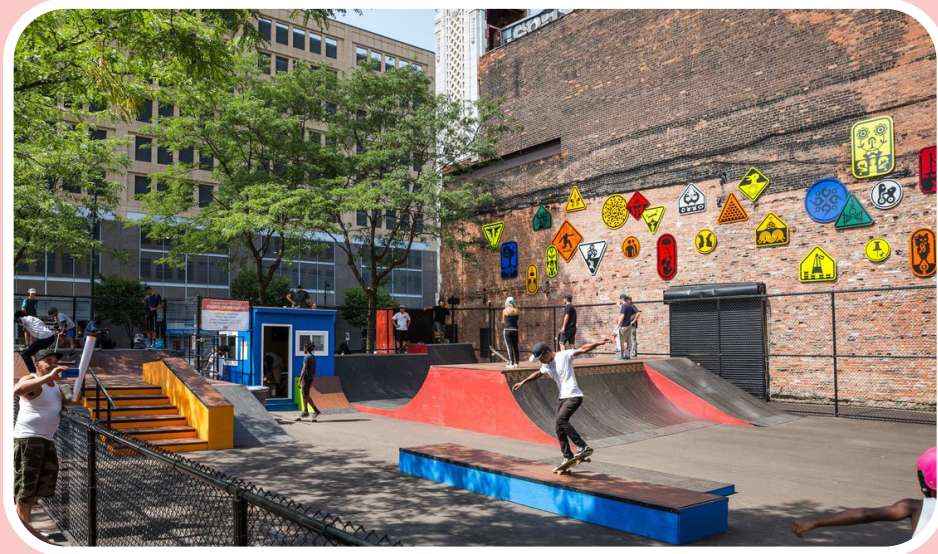


Brightmoor is a predominately black community...



17% of residents reported over 40 different ancestries including German, French, Jamaican, Haitian, Moroccan, Ghanaian, Nigerian and many other African and European ancestries.

# ENVIRONMENTAL COMFORT: YOUTH



**PLAYFUL**

**SOCIAL**

**WALKABLE**



# POLL!

## What does a safe public realm mean for youth?

## How does their gender and physical ability inform their sense of comfort?

*Use the response box to tell us what youth may look for in their neighborhood spaces.*



TODDLERS

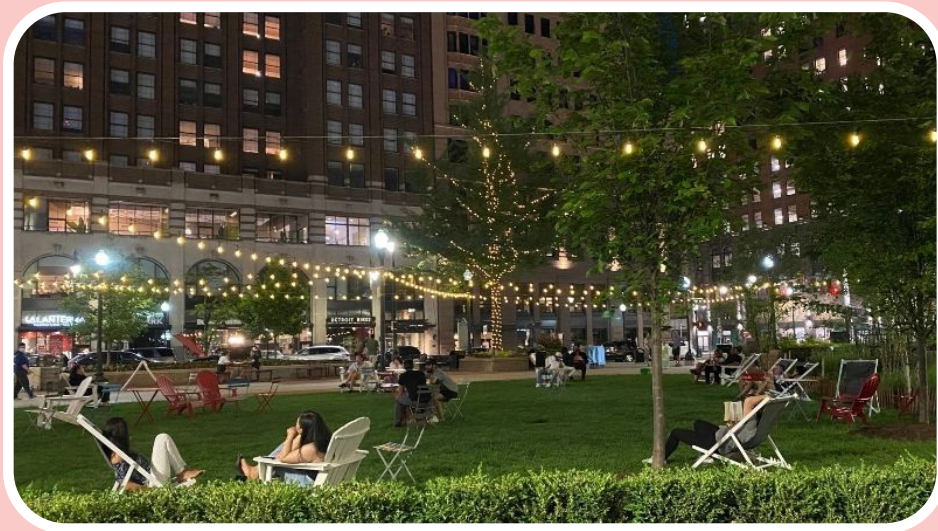


SCHOOL AGE CHILDREN



TEENS

# ENVIRONMENTAL COMFORT: ADULTS + CAREGIVERS



**SAFETY**

**CONVENIENCE**

**ACCESSIBILITY**

# POLL!

**What does a safe public realm mean for adults + caregivers?**

**How does their gender and physical ability inform their sense of comfort?**

*Use the response boxes to tell us what adults and caregivers may look for in their neighborhood spaces!*



STUDENTS

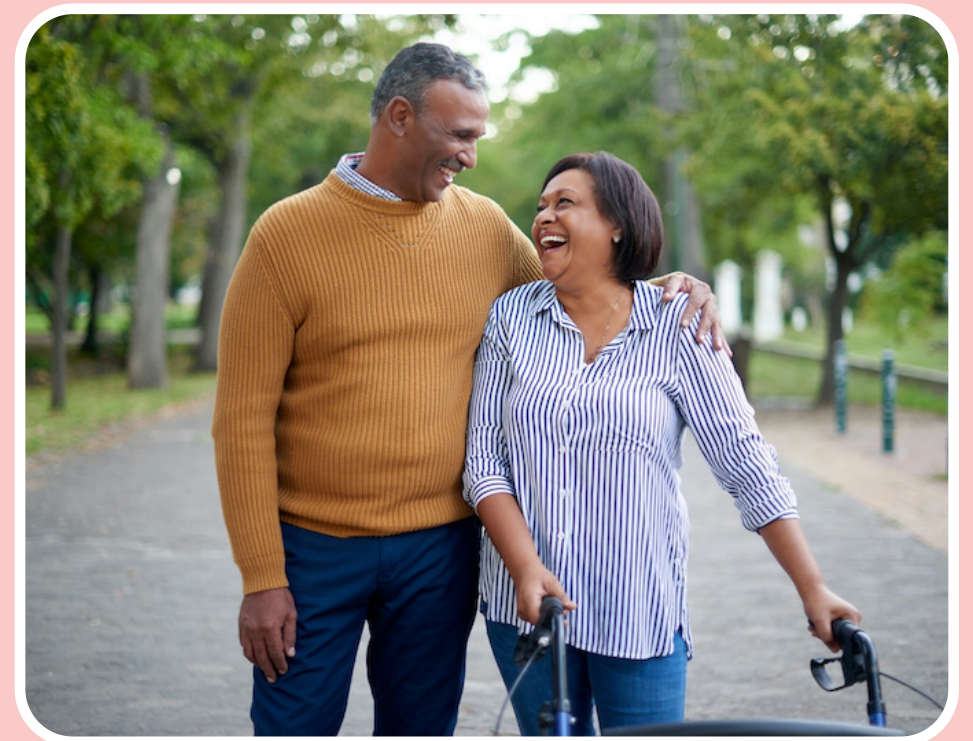


WORKING PROFESSIONALS



PARENTS/CAREGIVERS

# ENVIRONMENTAL COMFORT: OLDER ADULTS + SENIORS



**TRANQUILITY**

**SEATING**

**ACCESSIBILITY**

# POLL!

**What does a safe public realm mean for older adults + seniors?**

**How does their gender and physical ability inform their sense of comfort?**

*Use the response boxes to tell us what older adults and seniors may look for in their neighborhood spaces!*



ACTIVE OLDER  
ADULTS



GRANDPARENTS/  
CAREGIVERS



SENIORS

**BREAKOUT  
ACTIVITY:  
SAFE JOURNEYS**

# SAFE JOURNEYS

Imagine yourself as a member of the different community cohort groups and map how they would typically move through the neighborhood and why those chosen routes feel the most safe!



YOUTH



ADULTS



SENIORS



# THANK YOU!



Visit [bit.ly/brightmoorfp](https://bit.ly/brightmoorfp) or scan the QR code for more information about the plan and to stay tuned for future workshops!