

NOVEMBER 2023

Making connections through opportunities

EDITION 14

PDD PRESENTS:

MIDWEST-TIREMAN NEIGHBORHOOD FRAMEWORK!

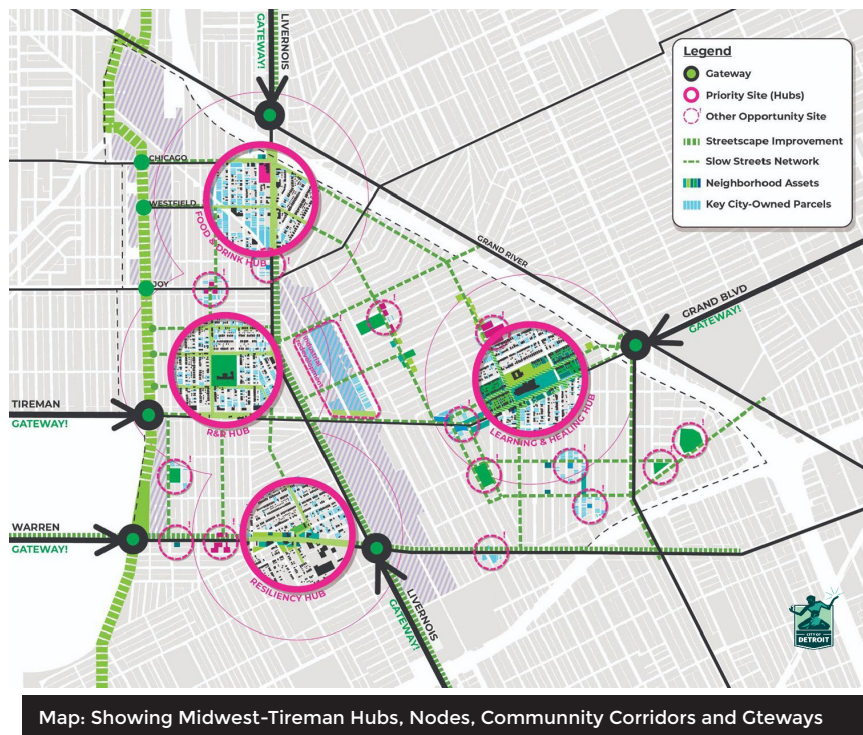
The City of Detroit Planning and Development Department presented recommendations to the community for the Midwest-Tireman Neighborhood Framework on October 20, 2023, in a Framework Expo! The Expo features food, fun, and resources available to the community, as well as the plan forward to uplift the Midwest-Tireman community.

The consultants for the framework were Interboro Partners, with the Detroit Collaborative Design Center, Rossetti, Spalding Dedecker Associates, and BJH Advisors. The framework would not be possible without the support of our partners, including but not limited to the city of Detroit government (HRD, DWSD, DPW, GSD, DON, JLG planning study team), allied agencies (DEGC, Invest Detroit), residents, block clubs (especially, United Block Club, Midwest Civic Council of Block Clubs) and businesses. The event was held at Equity Alliance (6602 Walton.)



Photo 1 (top): Community Meeting #4 held at Equity Alliance.

Photo 2 (bottom): Neighborhood legend and Midwest Civic Council of Block Clubs president Sheri Burton and one of her iconic quotes.



THE GUIDING PRINCIPLES OF THE FRAMEWORK...

Build on what's already there - i.e., start with and build on existing community investments.

Synthesize stakeholder feedback - Creatively transform feedback into the building blocks of the plan.

Be resourceful - Look for opportunities and solutions that address more than one issue or need.

Be strategic - This meant developing an innovative, longer-term vision that can be started with practical, implementable projects to make an immediate impact.



VIRTUAL OFFICE HOUR:
THURSDAYS: 4:00 PM - 5:00 PM

Call or email to set up an appointment

CONTACT: midwest-tireman@detroitmi.gov
JOHN F. SIVILLS III Project Lead 313-224-4403
RASHEDUL H. DEEPON Project manager 313-224-4531

FOR UP-TO-DATE INFORMATION
Visit: www.detroitmi.gov/midwest-tireman/



DEPARTMENT OF
Planning &
Development

The Midwest-Tireman Monthly Newsletter



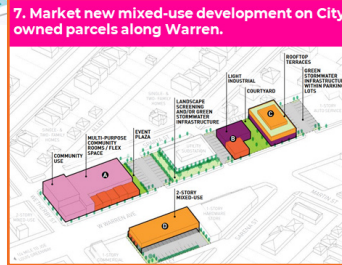
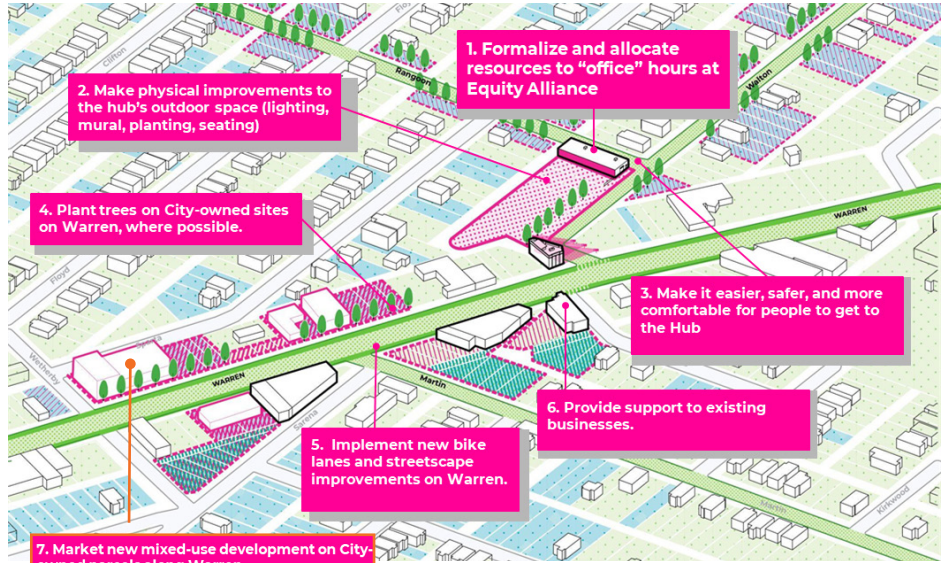
DEPARTMENT OF
Planning &
Development

Making connections through opportunities

CREATING HUBS, NODES, COMMUNITY CORRIDORS AND GATEWAYS

The framework advocates strengthening existing assets in the community by establishing primary community hubs for future growth and development. The hubs use Equity Alliance (Resiliency Hub), Sherrill School site (Restoration and Recreation Hub), Ruthruff School site (Food & Drink Hub), and Sampson-Webber School (Learning & Healing Hub). The hubs represent the starting points where community investments have started or are large future opportunity sites that can potentially address essential community needs.

There are additional neighborhood institutions and areas of interest, considered as 'nodes' related to the larger hubs: parks such as LaNita's Memorial Garden and key destinations such as Soul On Ice, Brooksey's, Midwest-Tireman hosts developing intuitions such as a re-imagined Blue Bird Inn as the new headquarters of the Detroit Sound Conservancy or the St. Cyprians Episcopal Church as the home of ClassAct Detroit, as key nodes as well. The Framework recommends prioritizing improvements along key commercial corridors,



The complete community meeting #4 presentation can be found at:
www.detroitmi.gov/midwest-tireman/framework/

You can also provide comments on the recommendations at:
midwest-tireman@detroitmi.gov

such as Warren, with streetscape improvements for short and long-term strategies; a study on pedestrian traffic along Livernois; and some enhancements to the Tireman corridor coming in from New Center. A slow street network can tie these corridors back into the community as well as the new Joe Louis Greenway.

NEXT STEPS

We will incorporate feedback received from the fourth community meeting and will continue drafting the final report.

A digital copy of the Midwest-Tireman neighborhood Framework will be published by end of the year at:

www.detroitmi.gov/midwest-tireman/framework/

A New Identity - The Framework recommends using the gateways into the neighborhood to create an identity for the community. These gateways are integral in creating first impressions for people outside the neighborhood boundary.

The ethos of the Midwest-Tireman framework has been to 'Make connections with new opportunities.' These connections were established not only by the physical streets and site-specific recommendations but also by the people in the community and the vast amount of resources and wisdom they bring to the table. Strategically emphasizing these Hubs and Nodes and their interconnectivity with the Community Corridors and neighborhood Slow Streets may help to catalyze development and revitalization with the community's needs and aspirations in mind.

The Midwest-Tireman NeighborhoodFramework team is thankful to Deanna Stewart and Carlton Ballard of Equity Alliance Management for always having space for us to host these framework events and engage with the community in addition to the block clubs, other community partners and residents who engaged in the overall process and welcomed us into the community.

VIRTUAL OFFICE HOUR:
THURSDAYS: 4:00 PM - 5:00 PM

Call or email to set up an appointment

CONTACT: midwest-tireman@detroitmi.gov

JOHN F. SIVILLS III
Project Lead
313-224-4403

RASHEDUL H. DEEPON
Project manager
313-224-4531

FOR UP-TO-DATE INFORMATION

Visit: www.detroitmi.gov/midwest-tireman/

