

# PLAN YOUR REC



Take part in shaping your  
community's rec center!



# Brennan Rec Center

Community Roundtable Review

September 25, 2023



# WELCOME

## Today's Agenda:

- Introductions & Acknowledgements 6:00 pm
- Presentation / Overview 6:10 pm
- Facilitated table discussions 6:20 pm
- Report out 7:00 pm
- Closing 7:20 pm
  - Closing remarks
  - Group photo

# PROJECT SCHEDULE

## BRENNAN RECREATION CENTER *TIMELINE*



# WHAT WE'VE HEARD SO FAR

## **SURVEY & COMMUNITY MEETING #1 SUMMARY:**

### Most wanted activities:

- Community meeting spaces - 91.2%
- Gymnasium – 88.5%
- Fitness center – 88.5%
- Reading room – 87.2%
- Computer lab / internet access – 86.9%
- Dance & aerobics – 83.8%
- Arts & crafts – 82.0%
- Cooking & health classes – 78.5%
- STEM Classroom – 79.5%

# WHAT WE'VE HEARD SO FAR

## COMMUNITY MEETING #2 SUMMARY:

### Common Feedback:

- Clarity on operations (City will operate the facility as a City Recreation Center, open to partner programming, such as the Pistons and others)
- Concerns about room size, what does the proposed square footage look like?
- Make the spaces as multi-purpose as possible through partitions
- Multi-use court in the gym (for basketball, volleyball, pickleball, etc.), etc.
- Provide “pop-up” spaces for offices, services, barber shop and concessions.

# WHAT WE'VE HEARD SO FAR

## COMMUNITY MEETING #2 SUMMARY:

### Additional Feedback:

- Add information about the park, welcome info at the front desk / bulletin board
- Pop-up office space for local groups, which can provide flexibility without selecting one group over another, and can also serve as spaces for community service providers
- Shift laundry to back-of-house to support rec programming (rather than public coin-laundry)
- Any trees removed for the new structure should be relocated when possible or replaced x2

# DESIGN APPROACH

The design approach is about preserving and celebrating the neighborhood's **greatest urban spatial asset**:

**The beautifully mature plant life of Rouge Park which flanks the winding river.**

# DESIGN APPROACH





# DESIGN APPROACH

## 1

### Existing Building

- Contrast in material approach as we deviate from the brick and stone
- Will respond to building shape and size, mimicking the pitched roof
- Maintain similar scale

## 2

### Surrounding Plant Life

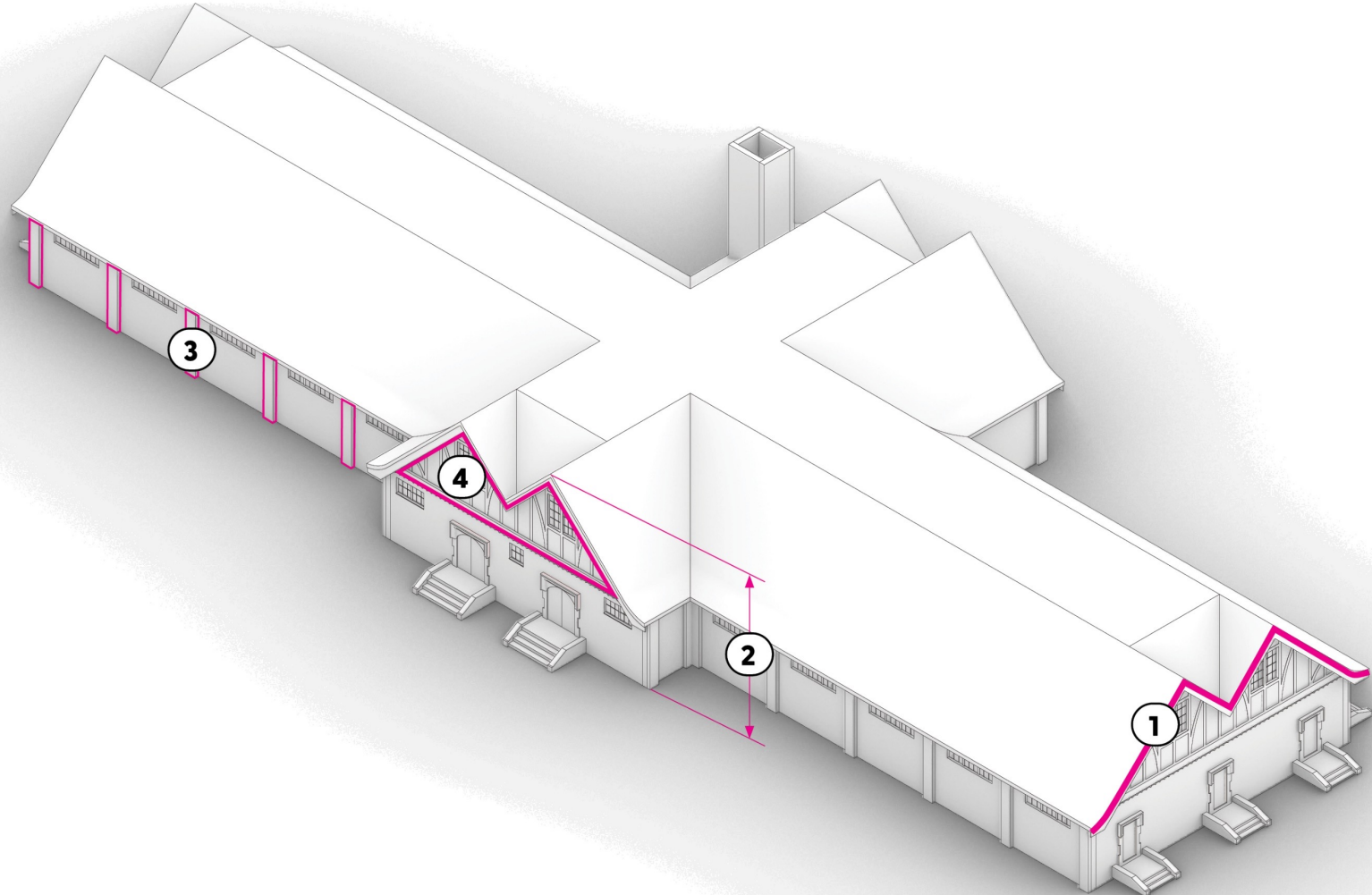
- Wood, bark, leaves, flowers to drive aesthetic approach
- Memorialize the trees the will be lost during construction

# DESIGN APPROACH

# 1

## Existing Building

1. Existing pitched roof profile
2. Low-rise building height sets below tree canopy
3. Decoratively pronounced structural system
4. Wood craftsmanship of tudor style



# DESIGN APPROACH

2

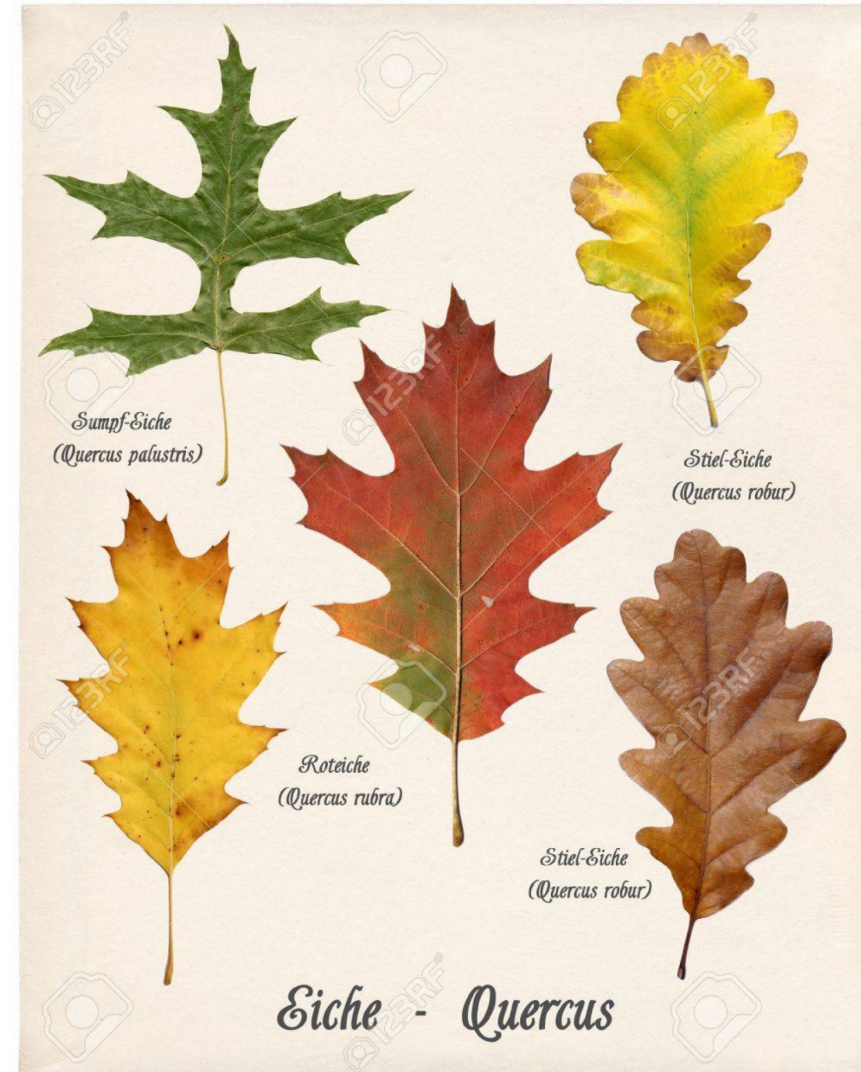
Surrounding Plant Life



# DESIGN APPROACH



Oak Tree



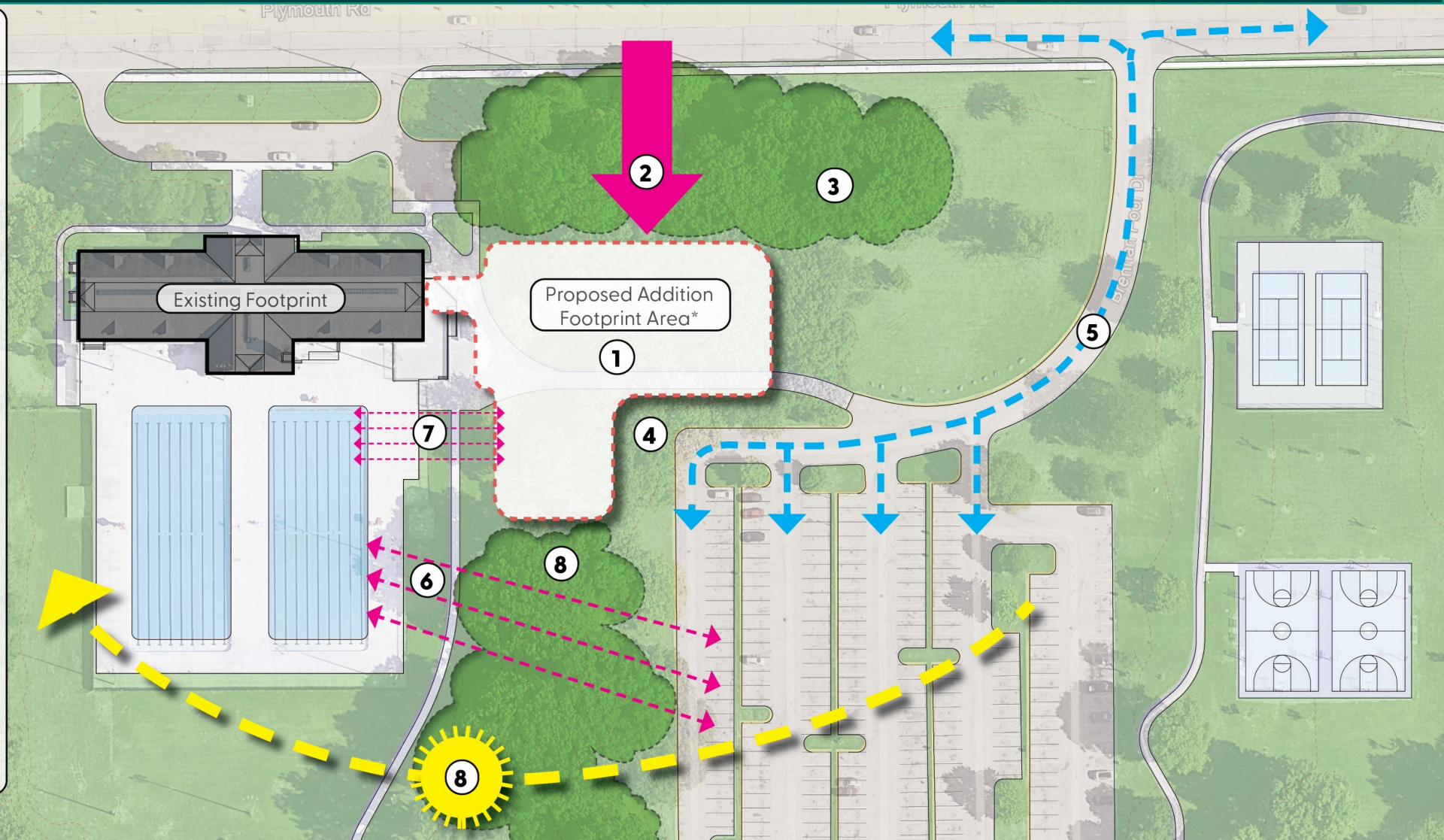
Honey Locust



# SITE STRATEGY

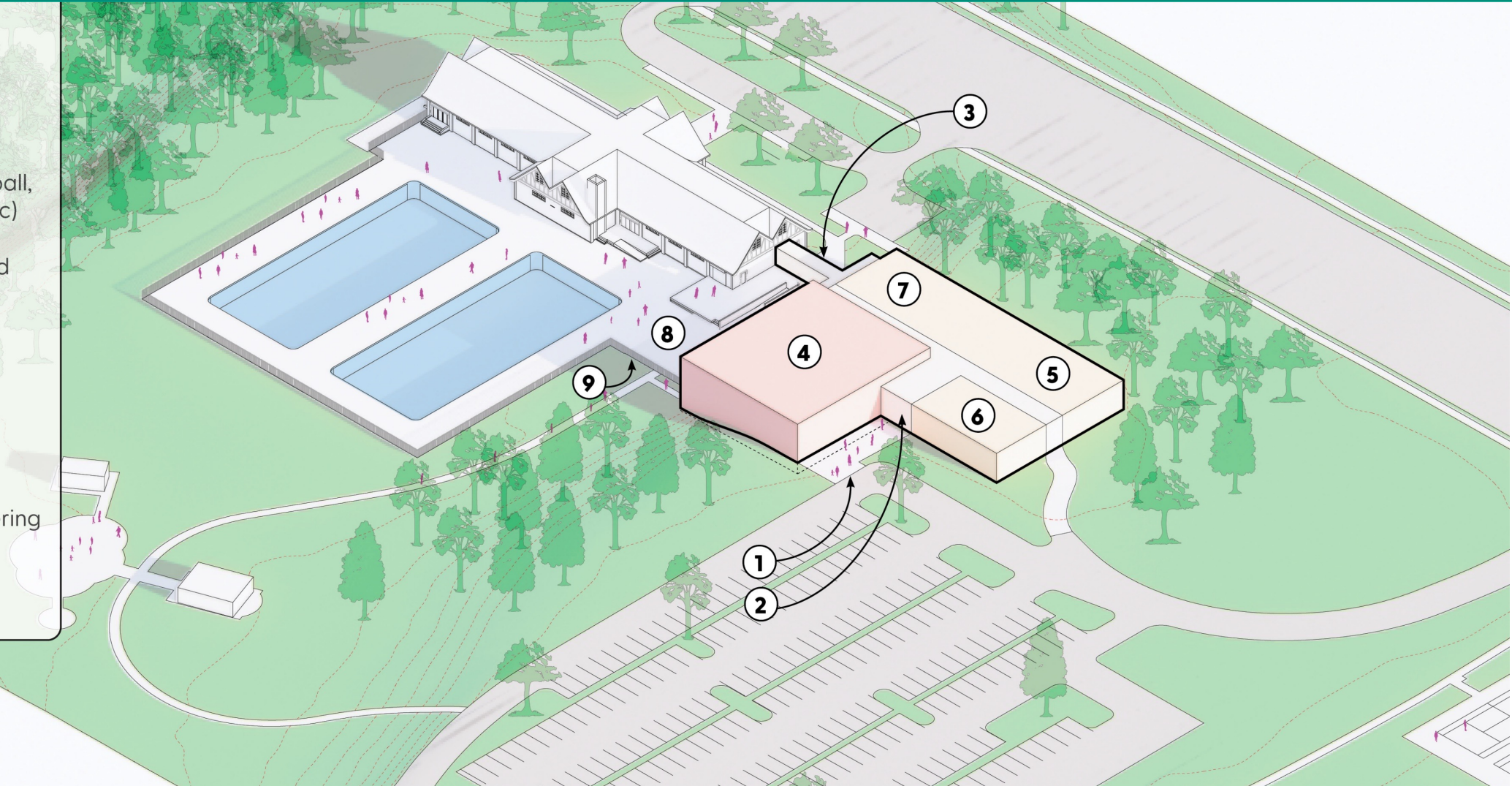
1. Addition is nestled within canopy of existing trees
2. Addition is pushed away from road
3. Maintain street frontage of trees along Plymouth
4. Front Door faces park "interior" for intimate welcome
5. Vehicular access and parking remains as existing
6. Visual connectivity to pool from parking lot
7. Visual connectivity between pool and gymnasium
8. Shading from existing tree canopy creates opportunity for transparency at south

\*ALL TREES TO BE REPLACED

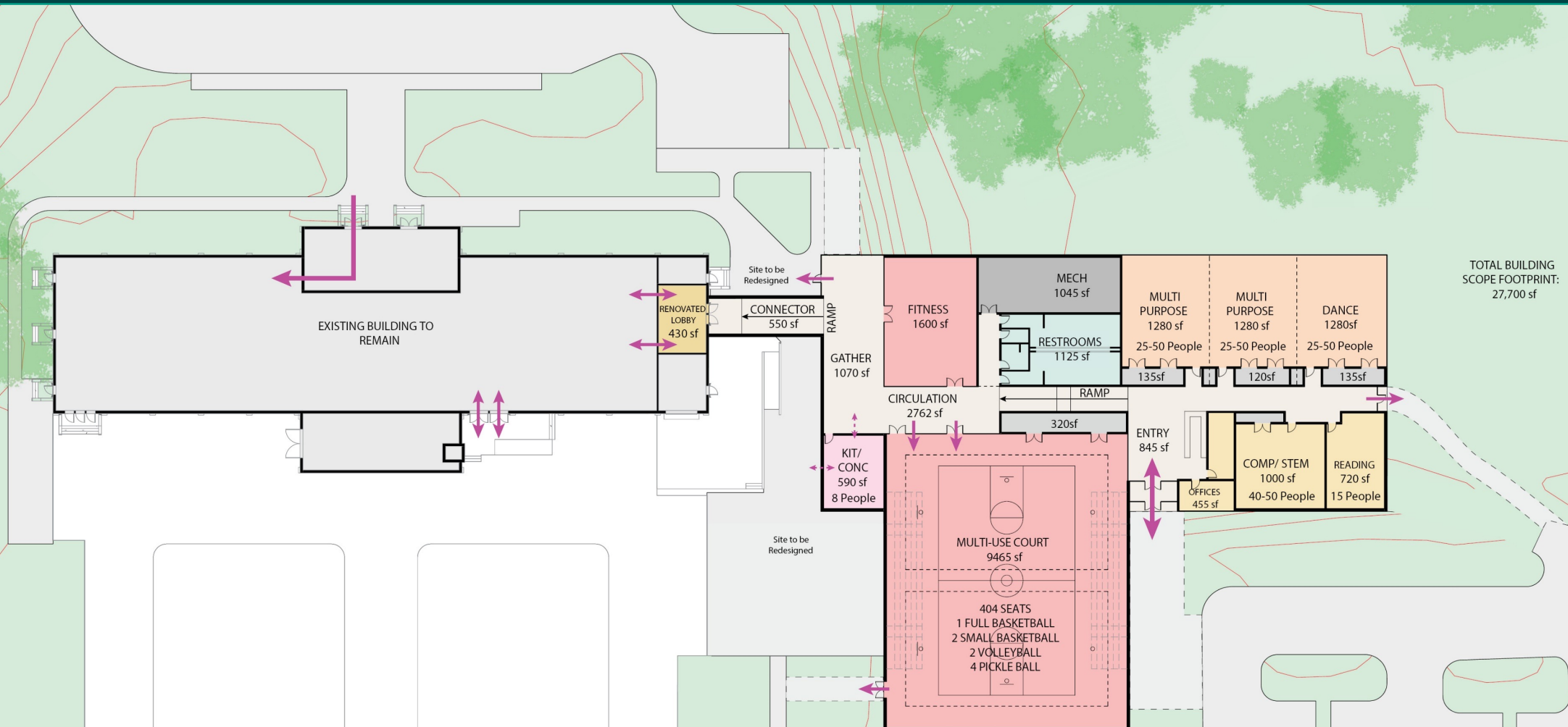


# SITE STRATEGY

1. Plaza
2. Entry Vestibule
3. Connector Breezeway
4. Multi-use Court (Basketball, Volleyball, Pickle-ball, etc)
5. Multi-purpose rooms and Dance Studio
6. Offices, Stem, and Pop-up spaces: (barber, concessions, etc.)
7. Fitness Center
8. Outdoor Poolside Gathering
9. Security Fence



# PLANNING STRATEGY



TOTAL BUILDING SCOPE FOOTPRINT: 27,700 sf

# DISCUSSION – Report back in ~40 minutes

**Thank you!**

**Stay up to date on the project: [detroitmi.gov/brennan](https://detroitmi.gov/brennan)**

**Contact us:**

Juliana Fulton

Deputy Chief Parks Planner

[fultonj@detroitmi.gov](mailto:fultonj@detroitmi.gov)