



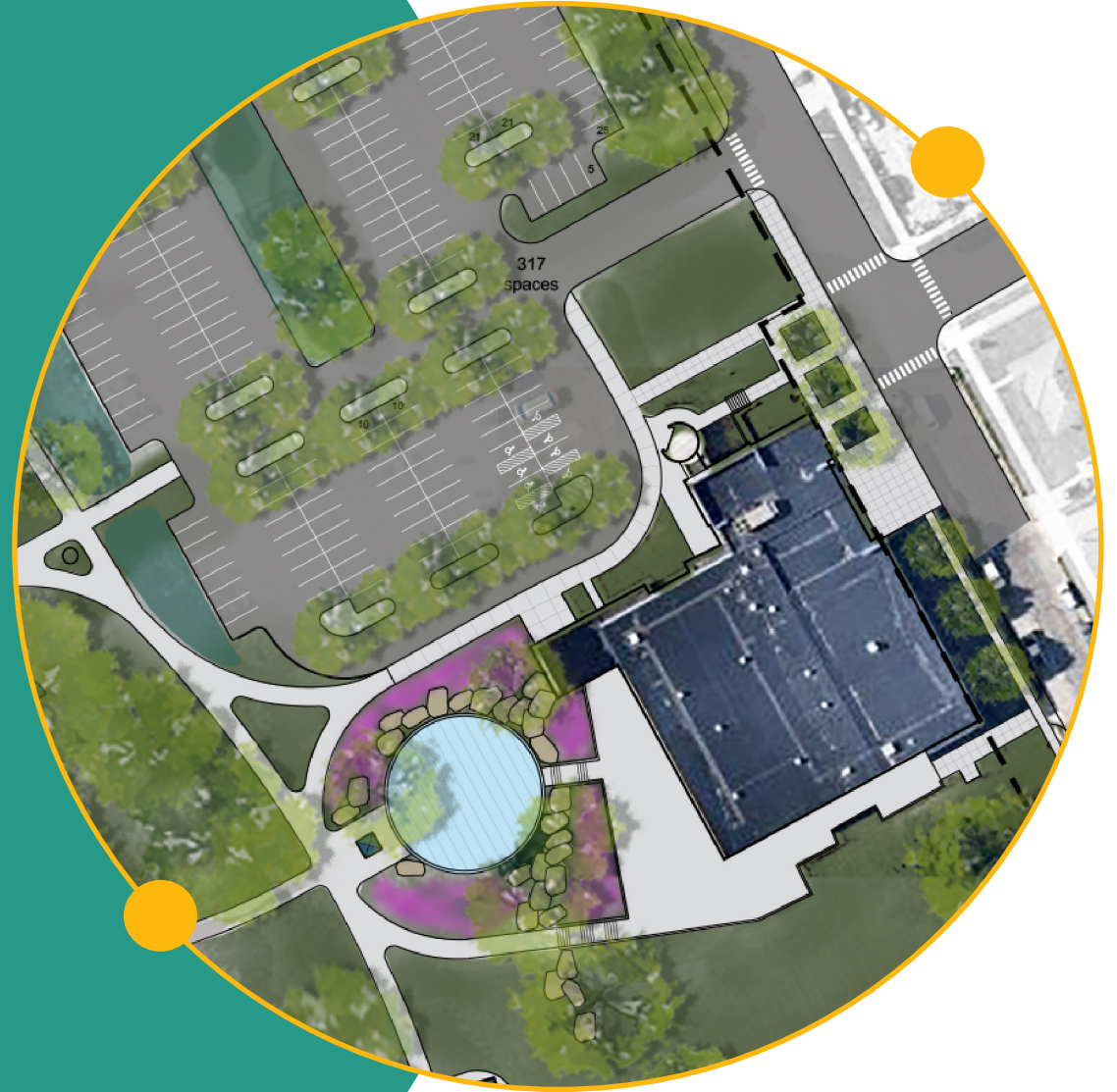
PATTON PARK PLAN 2023

A long-term vision and implementation strategy
for Patton Park in Southwest Detroit

Una visión a largo plazo y una estrategia de
implementación para Patton Park en el suroeste de
Detroit

رؤية طويلة المدى واستراتيجية تنفيذ
لباتون بارك في جنوب غرب ديترويت

Detroit General Services Department
detroitmi.gov/patton





ACKNOWLEDGMENTS

Many thanks to the External Stakeholder Committee who helped the planning team gain a deeper understanding of Patton Park, served as a conduit to the community, and provided thoughtful feedback throughout the planning process.

Verna Adams, Pablo Davis Resident Council
Ann Byrne, Friends of Patton Park + Springdale Woodmere Block Club
Nicole Fisher, Springdale Woodmere Block Club
Perla Garibaldi, Detroit Soccer League
Elizabeth Gonzalez, Congress of Communities
Juan Gutierrez, SDBA
Sigal Hemy, Detroit Parks Coalition
Roberto Lucas, Detroit Pumas
Mary Carmen Munoz, LA SED Senior and Youth Center
Efrain Pina, Mundo Latino Soccer
Yvette Pullom-Bass, Detroit Parks Coalition
Gloria Rocha, MCDC
Nora Rodriguez, COC + Livernois 2 Clark Block Club
Lisa Marie Rodriguez, Urban Neighborhood Initiatives
Janet Rodriguez, Ballet Folklorico
Fernanda Sanchez, La SED Senior and Youth Center
Myrna Segura, SDBA + Mexicantown-Hubbard Communities Main Street
Mary Steadman, Pablo Davis Senior Center
Darchelle Strickland-Love, Bridging Communities

SPECIAL THANKS TO

Councilmember Santiago-Romero, District 6
Joel Reyes-Klann, Community + Resident Services Manager

City of Detroit Patton Park Planning Team

Julianna Fulton, Interim Chief Parks Planner
Tim Karl, Chief Landscape Architect

Shamori Whitt, Senior Parks Planner
John Deruiter, Assistant Chief of Landscape Architecture
Hanan Yahya, Joe Louis Greenway

Heidi Ibarra, Patton Recreation Center Supervisor
Christina Peltier, Joe Louis Greenway
Joseph Kemp, Joe Louis Greenway
Antonio Mora-Mills, Department of Neighborhoods
Eva Torres, Department of Neighborhoods
Michele Flournoy, Planning & Development Department
Rashedul Deepon, Planning & Development Department

Assistance Provided By



TABLE OF CONTENTS

Overview + Process	04
Long-Term Vision	12
Implementation Strategy	20



OVERVIEW + PROCESS

Patton Park is 1 of 13 Regional Parks in the City of Detroit. Regional parks are large (more than 50 acres) parks that serve a broad range of needs; are reachable by public transit, car, bike, or foot; and offer unique amenities that draw people from both inside and outside the immediate neighborhood. Other examples of Regional Parks in Detroit include Palmer Park, Rouge Park, and Chandler Park.

Patton Park is an important, large, Regional Park that will soon be home to a section of the Joe Louis Greenway (construction starting in 2024). Developing a long-term vision for Patton Park allows the City to check in with residents to hear what is desired at the park and ensure projects can be coordinated in a way that can accommodate future improvements. The plan also helps the City understand priorities and align those priorities with a strategy to secure funding for implementation.

This is a guiding document for the next 15 years. While the City does not currently have funding to implement all of these ideas, this plan allows for a comprehensive look at Patton Park to determine how the community's desires and dreams can be funded and phased in over time.

Patton Park Plan Project Goals

The City of Detroit General Services Department initiated a planning effort to develop a long-term vision for Patton Park in late 2022 with three key goals in mind.

- ✔ Alongside the community, develop a long-term vision for Patton Park that acknowledges past efforts and reflects existing projects and commitments
- ✔ Develop a strategy for moving the vision forward with a phased implementation over the next 15 years
- ✔ Look for opportunities to coordinate with partners and stakeholders

PATTON PARK HISTORY

Compiled by Andrea Gallucci, MLIS, Archivist, City of Detroit

Patton Park boasts 90+ acres of recreational land located in both Southwest Detroit and the City of Dearborn. In 1920, the City of Detroit acquired this property and named it Baby Creek Park as a nod to the Baubee family, the original French landowners. The Baubee Creek ran through this park until the mid-1930s when it was encapsulated in an underground sewer tunnel and continues to run under the parkland today.



In 1946, the parkland was re-named to honor US Military Commander General George S. Patton commemorating the end of WWII and Detroit's role as the Arsenal of Democracy.

The next decades ushered in the beginning of major improvements at Patton Park to serve the community. In 1950, Detroit Parks and Recreation

opened the first public indoor / outdoor pool in the United States making national headlines. Patton Rec Center began as a small building with a lobby, craft room, and restroom servicing the new pool. Over subsequent decades, it would be expanded and improved into the center Detroiter's enjoy today.

PLANNING PROCESS

Beginning in 2022, the planning process to develop this long-term vision for Patton Park took approximately 10 months and was centered on learning about the park, how it functions, what works, what doesn't work, and what the community would like to see at Patton Park in the future.

DECEMBER 2022



SITE WALK

The Detroit Patton Park Planning Team of General Services staff, Planning Department staff, and consultants visited Patton Park and walked together to discuss opportunities and constraints.

FEBRUARY 2023

EXTERNAL STAKEHOLDER MEETINGS (7)

A group of community and neighborhood leaders were assembled to help the team better understand the park, provide feedback, and assist in raising awareness of the planning project. The group met monthly from February-August 2023.

MARCH 2023

COMMUNITY SURVEY (387)

A survey was developed asking a variety of questions about how people use Patton Park and what they'd like to see in the future. Three hundred eighty-seven surveys were completed (85% by Detroit residents).

MARCH – JULY 2023



SMALL GROUP MEETINGS (11)

The Planning Team met with a number of local organizations for small group discussions about the park and neighboring community. Staff had conversations with groups such as the LaSed Seniors, UNI, Springdale Woodmere Block Club, various soccer organizations, Congress of Communities, American Indian Health and Family Services, Pablo Davis residents, and the American Moslem Society.

MAY – JUNE 2023



COMMUNITY MEETINGS (2)

Two community meetings were held at the Patton Rec Center to hear more about Patton Park, what the community would like to see improved, gather feedback on the draft plan, as well as begin to understand priorities moving forward.

SEPTEMBER 2023



FINALIZE VISION + DOCUMENT

The Patton Park Plan was reviewed during the month of August with input from both internal city staff as well as the External Stakeholder group. A community celebration was held in September to share the final plan and discuss initial improvements.

WHAT WE HEARD + LEARNED

The City planning team, with support from the External Stakeholder group, conducted a series of outreach activities to engage residents and organizations in order to learn about how Patton Park is currently used and what can be done in the future to improve the space. A variety of methods were used including virtual meetings, flyers, posters, yard signs, online survey, paper survey, and in-person meetings. A number of volunteers helped to spread the word about the project and the need for input via flyering, hanging posters and sharing announcements on social media.



Key Take Aways: Focus Group Meetings

- | | | | |
|-----------------|---|-------------------|---|
| SAFETY | <ul style="list-style-type: none"> • Lighting • Patrols • ATVs • Loitering • Emergency Call Boxes | FACILITIES | <ul style="list-style-type: none"> • Trails • Restrooms • Seating • Shade • Gardens • Picnic Areas • Stage • Soccer • Baseball • Playgrounds • Senior Exercise Area • Native American Space • Splash Pad |
| UPKEEP | <ul style="list-style-type: none"> • Sidewalks • Grass/trees/flowers • Trash • Wet Areas | | |
| PARKING | <ul style="list-style-type: none"> • Lot is full • Parking on grass • Donuts/loitering • Signage | | |
| PROGRAMS | <ul style="list-style-type: none"> • Family events, cultural events, local history • Collaborate with local organizations • Multi-lingual signs • Soccer and ballfield usage • Senior programs | | |

Some Things Heard at Community Meeting

Maintenance + Safety + Operations

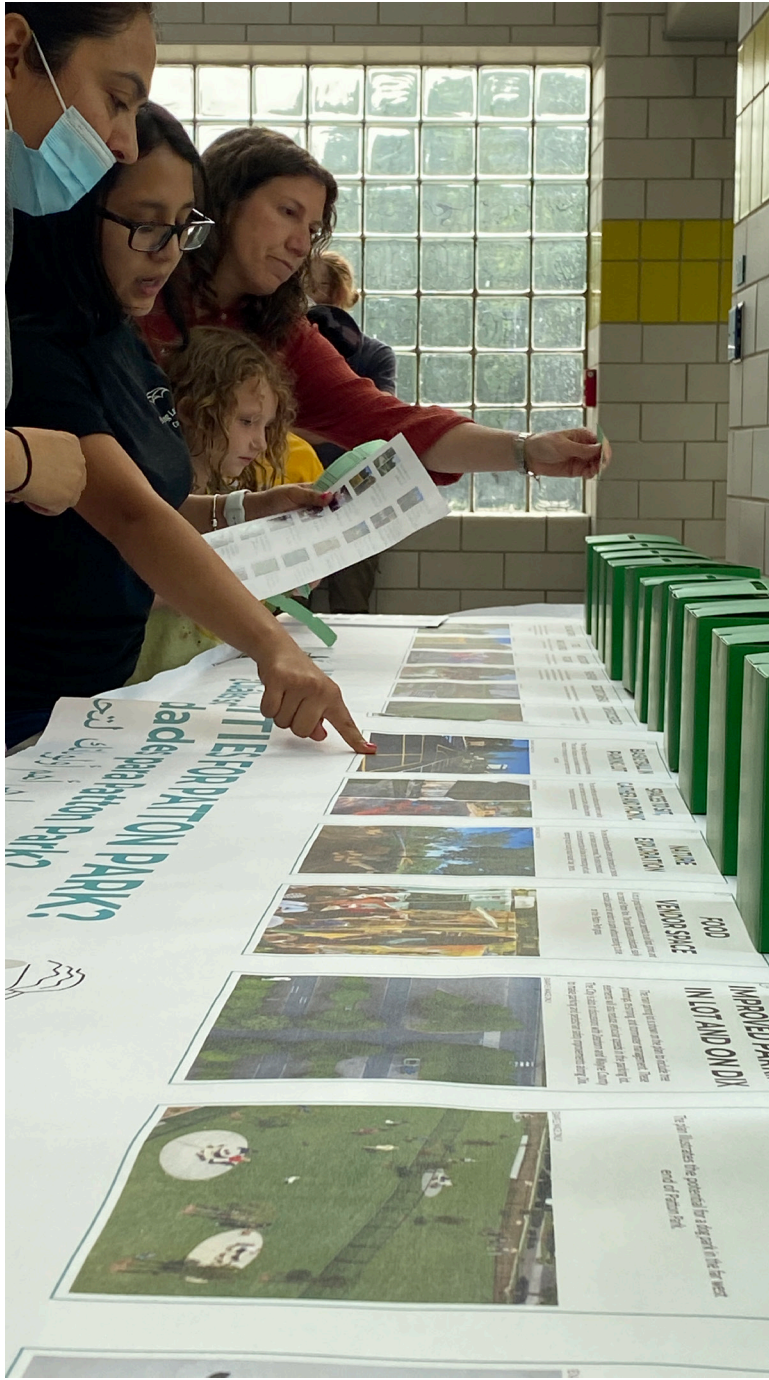
- Want gates closed at 10:00pm
- Clean up marsh area for safety
- Leave lights on until 10:00pm
- Where can ATVs legally go/be?
- Grass is in bad condition
- Need more restrooms open during park hours

Parking

- General support for green infrastructure
- Want resolution for parking on Dix, police ticketing, safety

Interests/Desires

- Stage for performances and festivals
- Turf soccer field with lights as long as managed equitably
- Shade, benches, trash cans
- Baseball and softball fields
- Reshape boulders for sitting
- Interest from neighbor for indigenous sacred space
- Food vendor space
- Bikeshare and scooter stations
- Family-oriented park accessible for all



Community Survey (Spring 2023)

A survey was completed by 387 people in the Spring 2023 (87% by Detroit residents) that included a variety of questions about how people use Patton Park and what they'd like to see in the future. Top Activities people do at the park include Enjoy Nature, Walk/Run, Sit and Relax and Play or Watch Soccer. The top amenities respondents want to see at Patton are restrooms, picnic areas, paths, natural areas, and playgrounds.



Plan Patton Park
تخطيط حديقة باتون

General Services Department

City of Dearborn
2301 Woodmere
Southwest Detroit

What should we do with the park?
¿Qué debemos hacer con el parque?
ماذا نعمل لتحسين الحديقة

Take this survey
Toma esta encuesta
اكمل هذا الاستبيان القصير

or go to
o if a
او اذهب الى
bit.ly/pattonmasterplan

BEFORE MARCH 22nd
ANTES 22nd (22/3)
قبل

JOE LOUIS GREENWAY
detroit.gov/patton (313) 224-1100

PATTON PARK SURVEY RESULTS 2023

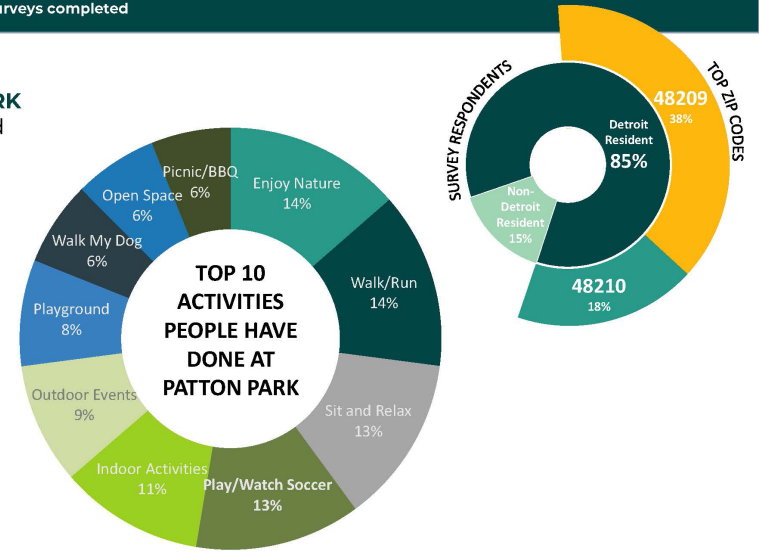
387 surveys completed

MOST RESIDENTS USE THE PARK to enjoy nature, walk, run, sit and relax, and play or watch soccer.

MOST RESIDENTS WHO responded to this survey are 25-34 years old.

85% of **RESPONDENTS ARE DETROITERS** with zip code 48209 completing the most.

85% arrive by **CAR**
25% **WALK/RUN** to the park
22% **BIKE** to the park
5% arrive by **BUS**



PATTON PARK SURVEY RESULTS 2023

TOP AMENITIES RESIDENTS WOULD LIKE TO SEE



Prioritization Station (June 2023)



Community Prioritization Results

A Prioritization Station was set up in the lobby of the Patton Recreation Center and passers-by were asked to place five raffle tickets in the boxes that correspond with the items they'd most like to see at Patton Park. The Station was also set up at the Southwest Planning Open House meeting on August 3, 2023. The list below reflects the results and number of 'votes' for each item.

- Splash Play (89)
- Turf Soccer Field (38)
- Sled Hill (33)
- Nature Exploration (33)
- Food Vendor Space (30)
- Trails and Paths (28)
- Stage and Event Space (28)
- Trees and Plantings (23)
- Dog Park (23)
- Security Cameras (22)
- More Outdoor Programs (21)
- Spaces to Sit, Gather and Picnic (20)
- Basketball in Parking Lot (16)
- Improved Parking in Lot and on Dix (10)



PATTON PARK LONG-TERM VISION

This is a guiding document for the next 15 years. While the City does not currently have funding to implement all of these ideas, this plan allows for a comprehensive look at Patton Park to determine how projects can be funded and phased in over time.

The plan presented on the following pages represents a long-term vision for Patton Park to be a safe, family-oriented, lively space that offers a variety of year round amenities, events, and programs that reflect the diverse and culturally-rich community it serves.



Patton Park Rendering illustrating long-term vision



PATTON PARK PLAN

Patton Park is a beloved space that is (and has been) cared for, maintained, and used by many in the community. As projects, programs, or policies are evolving and being planned, it will be important to continue to coordinate with the formal and informal organizations and agencies, park neighbors, and those in the community that have been integral to the parks upkeep and programming.

These graphics and example imagery have been developed to portray the intent for future park improvements and use. It's anticipated that specifics related to design, material selections, location of amenities, and construction will continue to evolve. Further community engagement is anticipated as major phases/projects of the plan are funded and implemented.

Walking and biking trails are heavily used in Patton Park. Additional trails and paths are envisioned that create loops within the park, connect the areas of the park together, and provide more connections into the park from the surrounding neighborhoods. **The Joe Louis Greenway** is also planned to traverse through Patton Park. Lighting, security cameras, and emergency call boxes are planned along the Joe Louis Greenway.

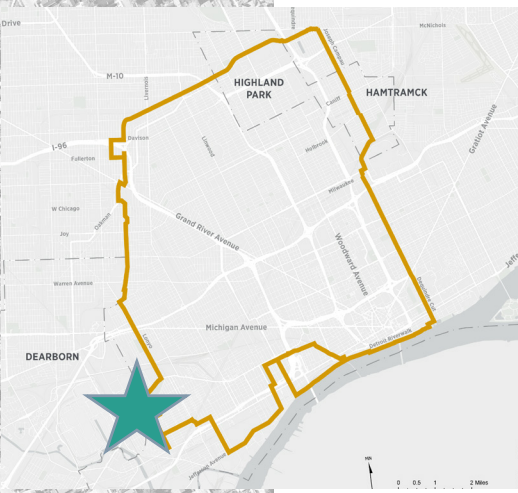


The Joe Louis Greenway at Patton Park

The Joe Louis Greenway (JLG) is a planned 27.5-mile recreational pathway that will unify Detroit's neighborhoods, people and parks. Through this greenway, we strive to honor Joe Louis by providing equitable spaces through arts, programming, and economic opportunities for all. The JLG will be a combination of on-street protected bike lanes, and new trails connected to existing trails like the Dequindre Cut and the Detroit RiverWalk and includes the cities of Detroit, Dearborn, Hamtramck, and Highland Park.

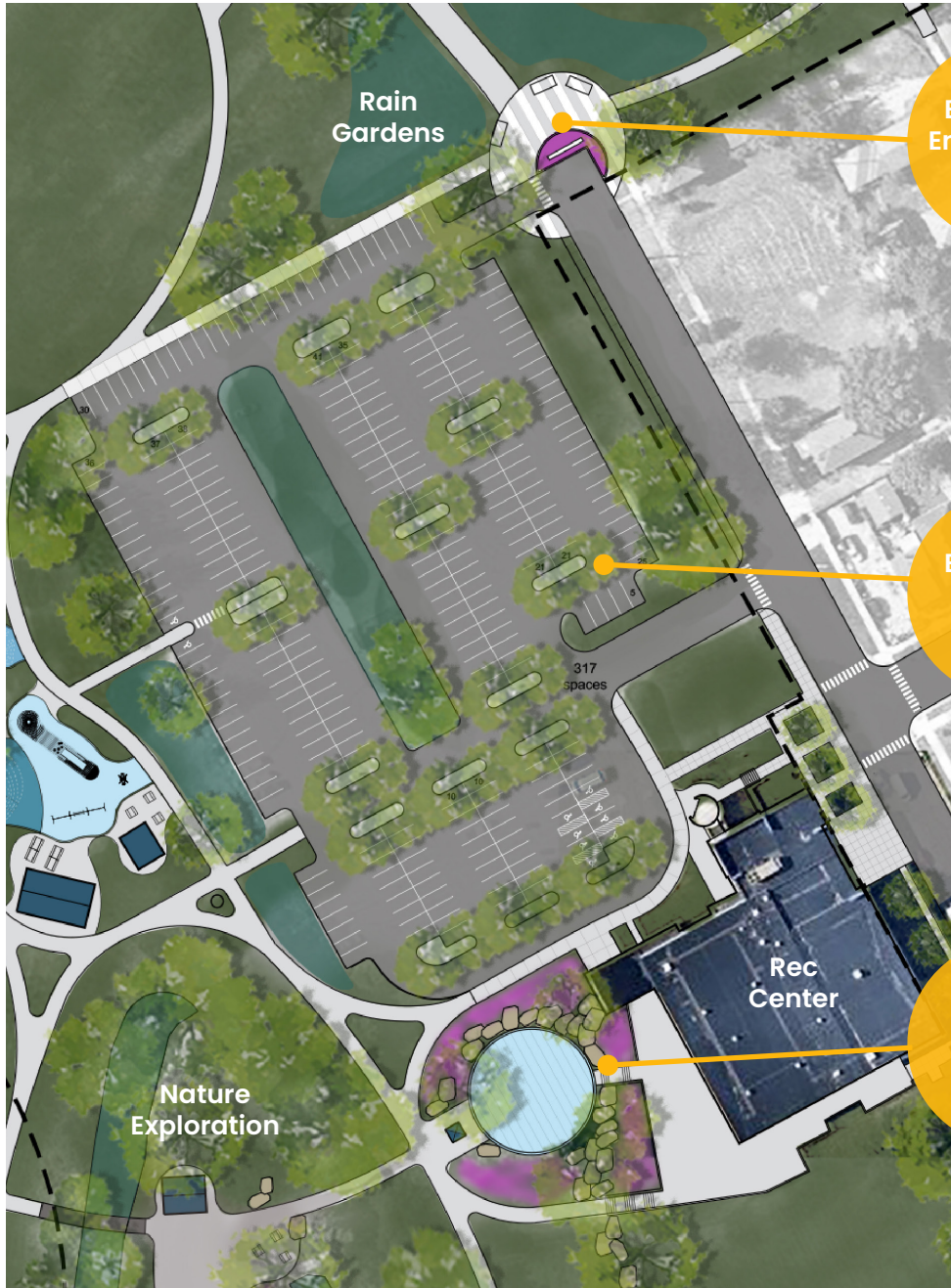
The Joe Louis Greenway is planned to traverse through Southwest Detroit and through Patton Park (yellow line). The City was successful in getting funding assistance through a Michigan Natural Resources Trust Fund grant to build a section of the Joe Louis Greenway through Patton Park with construction anticipated to begin in 2024. The new section of trail will be built between Vernor and the existing path along Dix. Funding is being sought to install lighting and security cameras along the Joe Louis Greenway as it passes through Patton Park.

Joe Louis Greenway



GREENWAY FEATURES

- 1 Trail
- 2 Landscape/Stormwater
- 3 Street Trees
- 4 Lighting
- 5 Safety Improvements
- 6 Maintenance
- 7 Security



Enhanced Entry & Food Vendors



Several local **vendors** have permits to sell food, drinks and ice cream at Patton Park. The plan illustrates a dedicated, easily accessible space for vendors to park and setup. An entry sign, plantings, and places to sit are also imagined. A wider promenade leading to/from a stage and Joe Louis Greenway entry plaza will allow for connectivity and additional seating. This area could also allow for walk up distribution/activation without disturbing Recreation Center activities.

Enhanced Parking



The **main parking lot** adjacent to the Recreation Center is planned to include green stormwater infrastructure, rain gardens, plantings, and restriping. This will help manage rain water, reduce heat, discourage speeding, and better organize the parking. The City is also looking into striping a portion of the lot for basketball during non-peak hours.

Splash Play



An area for **splash/water play** is illustrated along the Joe Louis Greenway and behind the Recreation Center. It is envisioned to have natural materials incorporated that tie into the adjacent nature exploration area. This location is also close to parking, restrooms, and locker rooms. Educational opportunities exist related to the environment, resiliency, and sustainability.

A **stage** for small scale performances is imagined just off the Joe Louis Greenway. Positioned at the end of a large green space/great lawn where people could gather to listen and watch performances. The green space could also be used for informal play, festivals, gatherings, etc.



Stage and Event Space



Nature Exploration

Remove invasive species and create habitat for amphibians, small mammals, and migratory birds. 'Clean up' wooded marsh area along the Joe Louis Greenway. Add elements to allow for interacting with and **exploring nature** including nature-based play pieces, small pavilions and places to sit. **Educational** opportunities to interpret natural systems, climate resiliency, etc.



Entry Plaza with Seating

Entry plaza to Patton Park along the Joe Louis Greenway. Includes signage, plantings, shade trees, bike repair station, and a variety of seating and tables.

Playground and Gathering



Additional multi-age **playground** equipment and spaces. Additional **pavilions and picnic tables** for small gatherings, benches, and connections to parking lot and Joe Louis Greenway.

Joe Louis Greenway

The **Joe Louis Greenway** will traverse through Patton Park and include connections to Dix and Vernor.



The City is working with Dearborn and Wayne County to discuss **parking and pedestrian safety** improvements along Dix Avenue. Pedestrian crossings at Lonyo, at the new playground area, Western Street, and Saulino Court should be prioritized.

Dix Avenue Safety Improvements



Soccer Field



Patton Park is heavily used for both organized and pickup soccer (youth-adult). A full size, **artificial turf field** including accessible bleachers for spectators was discussed during the planning process. Additional analysis and discussions are needed to determine location. Private/public partnerships would be needed to fund construction, maintenance, and management.



Lonyo Entry

The **Joe Louis Greenway** is planned to traverse along Lonyo and into an **entry plaza** in Patton Park that includes signage, plantings, seating, etc. **Bird meadow** plantings are proposed behind and around the plaza (orangeish/brown color on graphic). Trails are illustrated to connect in all directions and into the adjacent neighborhoods.

Lighting

Lighting along the newer paths that connect the neighborhood to Dix Avenue (around the fitness equipment, play area and picnic shelter) is planned to improve safety for those that utilize the cross-park pedestrian connection.

Athletic Fields

Baseball and soccer are popular activities at Patton Park and are planned to continue. Natural grass, field and **surfacing improvements** are desired. **Benches, shade,** and places for rest are imagined along the trails. A mini **Futsal Field** is illustrated near the newer Dix playground and parking area. Outfield fencing for the **ballfields** and foul ball netting along Dix are desired.

Park Edge and Connections



The **gravel parking area** at the end of Cabot is imagined to be removed and **restored with grass, plantings, and pedestrian connections** to/from Patton Park. Vehicular access to homes will be maintained where needed.



Bird Meadow

A **plaza** with a Patton Park sign, plantings, seating, etc. is planned across from Saulino Court and as a direct connection between Patton and Lapeer Parks. Improved pedestrian crossing of Dix Avenue is needed.

Entry Plaza

Off-Street Parking

An additional 18-20 space, off-street parking area is planned on the east side of Dale in order to provide better access and support to the west end of the park.



Sled Hill

A sled hill is envisioned using soil excavated from nearby city projects and planted with a bird meadow seed mix.

Trails and Paths

Dog Park



A fenced in dog park to allow for off-leash play including seating areas for their humans.



Patton Park Rendering illustrating long-term vision

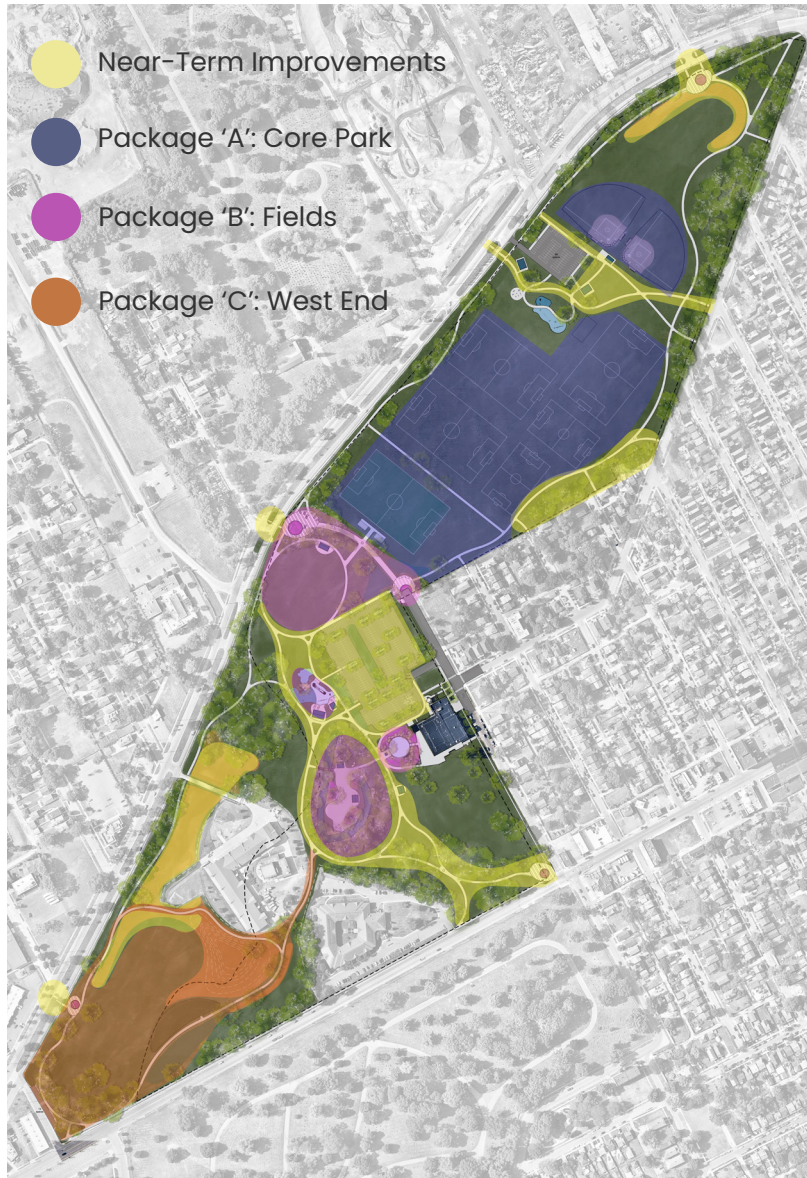


IMPLEMENTATION STRATEGY

The Patton Park Plan and associated graphics have been developed to portray the intent for future park improvements and use. It's anticipated that specifics related to design, material selection, and construction will continue to evolve. Further community engagement is anticipated as major phases/projects of the plan are funded and implemented.

The implementation strategy takes into consideration community input, logical construction sequencing, as well as the realities of current and potential funding. There are elements of the Plan where funding has either already been secured, grants have been applied for, and/or they are items that can be absorbed into current city budgets. Beyond those items, there are elements of the Plan that make sense to design and construct together. The strategy for implementation outlined in this document "packages or bundles" elements together in no particular order of priority to reflect flexibility as implementation moves forward.

Implementation 'Packages'



KEYS TO SUCCESSFUL IMPLEMENTATION



Engage and Involve

Continue to engage and involve the Southwest Detroit community in design, policy, and program decisions.



Partner

Ensure Patton Park reflects the rich culture of Southwest Detroit by partnering with local organizations and agencies to assist with outreach, implementation, and programming.



Leverage

Share the vision for Patton Park widely in order to leverage resources, raise awareness and move implementation forward.



Coordinate

Coordinate with all City Departments in order to ensure design and policy decisions reflect the nuances of maintenance and permitting.

NEAR TERM IMPROVEMENTS

Many proposed improvements at Patton Park are already funded or are in the process of being funded and will be completed **within the next 24 months**. These near-term improvements are a combination of capital improvements, maintenance improvements, and temporary safety-related measures.



Joe Louis Greenway (Dix to Vernor)

Construction of walking and biking path between existing trail along Dix to Vernor/Woodmere intersection. Includes amenities such as tables, benches, bike racks, and native trees.



Parking lot restriping and greening

Rain gardens, green infrastructure, plantings, and restriping of the main parking lot adjacent to the Recreation Center. Includes rain gardens adjacent to parking lot to manage stormwater.



More waste cans in the park

Place additional waste cans out around the park and work to service them more often.



Lighting along northern path

Lighting along the cross park path on the northeast end of the park between Dix and Woodmere near Lonyo Parking Lot.



Bird Meadow

In partnership with the Audubon Society and Detroit Bird City, install two areas of Bird Meadow (seed mix beneficial to birds and pollinators) - one associated with the Lonyo Joe Louis Greenway entry plaza, and one at the west end of the park along Dix and the Great Lakes Water Authority Baby Creek CSO facility.



Remove and green gravel parking

Remove gravel parking area at the end of Cabot and restore with grass, plantings, and pedestrian connections to/from Patton Park. Maintain vehicular access to homes.



Interim Dix crossing safety measures

While Wayne County, Dearborn, and Detroit work together on more permanent improvements to Dix, implement interim measures to improve safety of pedestrians crossing Dix at Lonyo, new playground area, Western Street, and Saulino Court.



Near Term Improvements

	TOTAL
Joe Louis Greenway (Dix to Vernor)	\$860,000
Parking lot restriping and greening	\$335,000
Green infrastructure near parking lot	\$600,000
Additional waste cans	\$10,000
Lighting along northern path	\$220,000
Bird Meadows	\$6,000
Remove and green gravel lot	\$100,000
Interim Dix Crossing Improvements	\$25,000
TOTAL NEAR TERM INVESTMENT	\$2,156,000

Near-term improvements are highlighted in yellow. Conceptual cost estimates for the near-term improvements reflect an opinion of cost based on available information. Many of the near term project cost estimates come directly from information provided by GSD via existing budgets and grant applications.

Estimates DO NOT include design and construction engineering costs/fees.



PACKAGE A: CORE PARK IMPROVEMENTS



Splash/Water Play/Outdoor Response

Construction of splash/water play adjacent to the Patton Recreation Center and along the Joe Louis Greenway. Envisioned to incorporate natural materials and include educational opportunities. Also includes building modifications to enable connections and accessibility; solar shelter; WiFi; and various sustainable response amenities.



Nature Exploration/Habitat

Include invasive species management, habitat creation, nature-based play and exploration, connections to the Joe Louis Greenway, small pavilions, and educational opportunities.



Playground/Picnic Expansion

Additional multi-age playground equipment, pavilion for small gatherings, benches, and connections to parking lot and Joe Louis Greenway.



Great Lawn and Stage

Creation of 'great lawn' for gathering, festivals, and informal play with stage for small scale performances with connections to the Joe Louis Greenway.



Promenade and Plazas

Construction of two plazas connected by a promenade. Plazas to include space for vendors, entry signs, plantings, and places to sit. Promenade to allow for movement between areas as well as additional places for sitting and gathering.



Associated Landscape/Amenities/Signage

Includes miscellaneous park elements such as trees, plantings, benches, trash cans, bike racks, as well as park entry and multi-lingual interpretive signs.

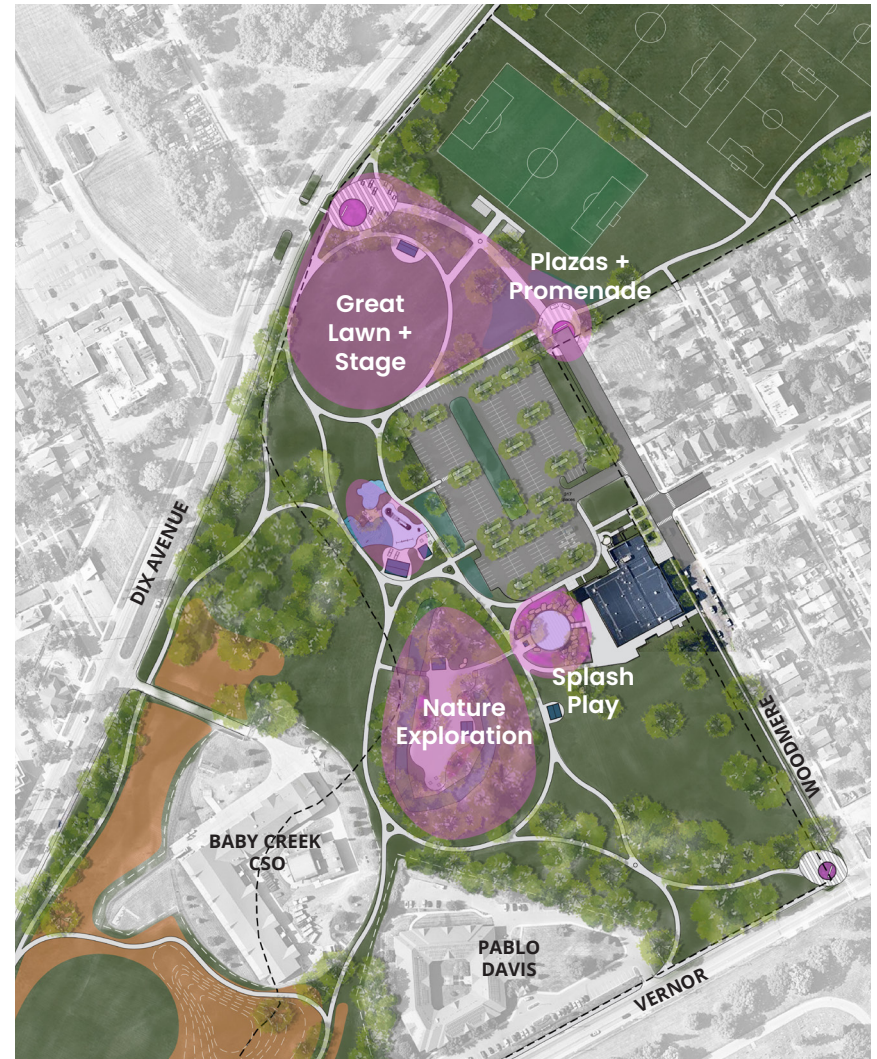


Package A: Improvements (Core Park)

	TOTAL
Splash/Water Play/Outdoor Response Zone	\$4,750,000
Nature Exploration/Habitat Creation	\$3,900,000
Playground/Picnic Expansion	\$2,775,000
Great Lawn and Stage	\$1,275,000
Promenade and Plazas	\$1,200,000
Associated Landscape/Amenities/Signage	\$530,000
TOTAL 'PACKAGE A' INVESTMENT	\$14,430,000

'Package A' Core Park improvements are highlighted in pink. Conceptual cost estimates for 'Package A' reflect an opinion of cost based on available information. Estimates include a 20% contingency. Costs for play equipment can be a wide range depending on desired size, level of customization, and number of pieces.

Estimates DO NOT include design and construction engineering costs/fees.



PACKAGE B: FIELD IMPROVEMENTS



Soccer Fields (natural grass)

Improvement of playing surface of heavily used natural grass fields such as leveling, aeration, and over seeding. Purchase new goals.



Artificial Turf Field with Seating + Lighting

Full-size artificial turf field (120 yds x 75 yds) with two sets of bleachers (250 spectators each), fencing around the field, lighting, and goals. Patton Park is heavily used for both organized and pickup soccer (youth-adult). An **artificial turf field** including accessible bleachers for spectators was discussed during the planning process. Additional analysis and discussions are needed to determine location. Private/public partnerships would be needed to fund construction, maintenance, and management.



Futsal Field (mini pitch)

Installation of a Futsal Field near newer Dix playground with walls, goals, containment nets, benches, and small bleachers.



Ballfield Fencing + Netting

Addition of outfield fencing for the two ballfields as well as netting to prevent foul balls from entering Dix Avenue.



Pathway Connections

Construction of cross park connection to improve access and separate turf and natural fields. Construction of additional trails/paths along Woodmere and ballfields to connect into existing trails and establish park loops.



Associated Landscape/Amenities/Signage

Includes miscellaneous park elements such as trees, plantings, benches, trash cans, bike racks, as well as park entry and multi-lingual interpretive signs.

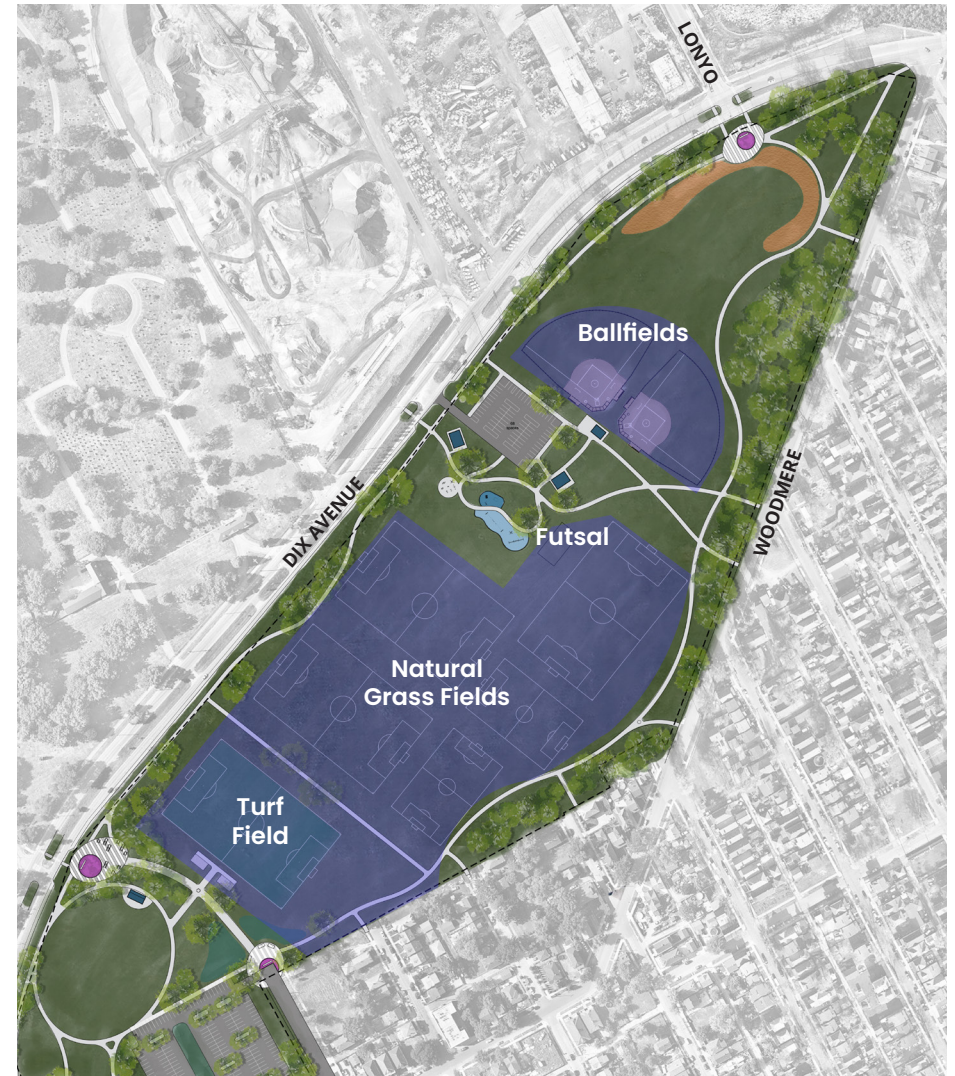


Package B: Improvements (Fields)

	TOTAL
Soccer Fields (natural grass)	\$2,900,000
Artificial Turf Field with seating and lighting	\$3,390,000
Futsal Field (mini pitch)	\$515,000
Ballfield Fencing + Netting	\$240,000
Pathway connections	\$880,000
Associated Landscape/Amenities/Signage	\$335,000
TOTAL 'PACKAGE B' INVESTMENT	\$8,260,000

'Package B' Field improvements are highlighted in blue. Conceptual cost estimates for 'Package B' reflect an opinion of cost based on available information. Estimates include a 20% contingency. Natural grass field improvements include estimates for drainage and irrigation. Artificial turf field includes fencing, lighting, and drainage.

Estimates DO NOT include design and construction engineering costs/fees.



PACKAGE C: WEST END IMPROVEMENTS



Dog Park

Construction of approximately 2.5 acre, fenced in dog park with areas for small dogs and larger dogs.



Sled Hill

Establishment of a sled hill with bird meadow seeding.



Bird Meadow Expansion

In partnership with the Audubon Society and Detroit Bird City, install Bird Meadow (seed mix beneficial to birds and pollinators) at the west end of the park.



Green Stormwater Management

Creation of rain gardens to management storm water in the west of the park.



Parking Lot + Picnic Area

Construction of 18-20 space, off-street parking area on east side of Dale Place as well as picnic tables for resting and small gatherings.



Pathways + Entry Plaza

Construction of additional trails/paths in west end to connect into existing trails and establish park loops. An entry plaza along Dix at Saulino including park entry sign, plantings, and seating.



Associated Landscape/Amenities/Signage

Includes miscellaneous park elements such as trees, plantings, benches, trash cans, bike racks, as well as park entry and multi-lingual interpretive signs.



Package C: Improvements (West End)

	TOTAL
Dog Park	\$325,000
Sled Hill	\$390,000
Bird Meadow Expansion	\$40,000
Green Stormwater Management	\$245,000
Parking Lot + Picnic Area	\$425,000
Pathways + Entry Plaza	\$400,000
Associated Landscape/Amenities/Signage	\$540,000
TOTAL 'PACKAGE C' INVESTMENT	\$2,365,000

'Package C' West End improvements are highlighted in orange. Conceptual cost estimates for 'Package C' reflect an opinion of cost based on available information. Estimates include a 20% contingency.

Estimates DO NOT include design and construction engineering costs/fees.



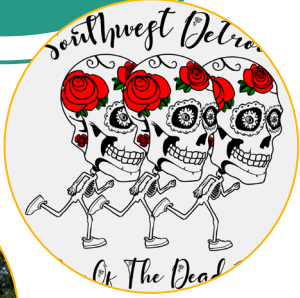
NEAR TERM OPERATIONS + MAINTENANCE CONSIDERATIONS

During the process of developing the Patton Park Plan, a number of discussions took place related to operations and maintenance of the park including a variety of comments from the community and external stakeholder committee. Implementing and/or determining the feasibility of the items below should be considered. As implementation moves forward, it will be essential to continue to coordinate with all City Departments in order to ensure design and policy decisions reflect the nuances of maintenance, operations, and permitting.

- ☑ Move large trash bins from parking lot in order to improve circulation and allow for more vehicles.
- ☑ Close gates to parking lot at 10:00 pm to deter loitering and improve safety.
- ☑ Place additional and/or larger boulders where vehicles are able to drive onto park grass.
- ☑ Reshape boulders or add more to form clusters so they can better serve as seating and gathering areas.
- ☑ Add multi-lingual signs to restroom building to communicate seasonal opening and closing schedule.
- ☑ Repair sidewalks along edges of Patton Park. i.e along Woodmere near Lawndale/Ferris, etc.
- ☑ Contact MoGo/Lime to determine feasibility of addition stations to Patton Park.
- ☑ Test ballfield lights and upgrade to allow for them to be on until 10:00 pm regardless if fields are in use.
- ☑ Service waste cans more frequently, especially during warm weather months.
- ☑ Due to heavy use of the park on Sundays, evaluate feasibility of extending hours and allowing for limited access to the Recreation Center in order to utilize the restrooms.
- ☑ Seek additional security staff, particularly during busy weekend hours.
- ☑ Focus clean up efforts on marsh area behind Recreation Center to increase visitor comfort-level.
- ☑ Encourage and support the growth and strengthening of the “Friends of Patton Park” group.

PROGRAMMING + PARTNERSHIPS

Partnerships and programming will be essential in order to make the vision for Patton Park come to fruition. There are a number of local organizations, agencies, and leagues that are long-time, trusted establishments in the community, many of which have cared for and helped activate Patton Park for decades (the External Stakeholder Committee organizations are a start). Partnerships will also be important in order to leverage resources as well as seek funding from the public and private sector for both capital and programming efforts.



- ☑ To ensure Patton Park reflects the rich culture of Southwest Detroit, partner with local organizations and agencies to assist with outreach, implementation, and programming.
- ☑ Support efforts that lift up Patton Park as a safe, family-oriented, lively space that offers a variety of year round amenities, events, and programs and reflects the diverse community it serves.
- ☑ Share the vision for Patton Park widely in order to leverage resources, raise awareness, gather enthusiasm, and move implementation forward.
- ☑ Continue to engage with the community and those that use Patton Park as policy, design, and programming decisions are being discussed and implemented.
- ☑ Seek opportunities and partners to add outdoor, nature-based and senior programming at Patton Park.



General Services Department

PATTON PARK PLAN

2023