

COMMUNITY OUTREACH ORDINANCE

CITY OF DETROIT Notice of Public Outreach

You are invited to give input on the following proposal.

PROPOSAL

The Joe Louis Greenway route through Hubbard Farms and Southwest, connecting to Clark Park, Gordie Howe International Bridge Community Benefits bike lanes and traffic calming on local streets.

MEETING INFORMATION

DPW and GSD will present on September 6, 2023 at 6:00pm at the Clark Park Recreation Center at 1130 Clark Street.

PROPOSAL SUMMARY

The goal of this presentation is to share the community-led route change of the Joe Louis Greenway (JLG) to Clark Park and the community proposal for Gordie Howe International Bridge Community Benefits (GHIB CB) for bike infrastructure. JLG construction for this 0.30-mile phase includes both on and off-street bike lanes and is approximately \$1M. GHIB CB construction is for 1-mile of on-street bike lanes and will cost approximately \$1M CDN. Construction dates are to be determined. Email us to subscribe to news & share your feedback.

FOR MORE INFORMATION

Send feedback to joelouisgreenway@detroitmi.gov. Please include Clark Park routes in the subject line.

For information about the Joe Louis Greenway, visit www.joelouisgreenway.com.



With advance notice of seven calendar days, the City of Detroit will provide interpreter services at public meetings, including language translation and reasonable ADA accommodations. Please contact the Civil Rights, Inclusion and Opportunity Department at (313) 224-4950, through the TTY number 711, or email crio@detroitmi.gov to schedule these services.

JOE LOUIS GREENWAY

& GORDIE HOWE COMMUNITY
BENEFITS

SOUTHWEST/HUBBARD FARMS
COMMUNITY OUTREACH
ORDINANCE MEETING

SEPTEMBER 6TH, 2023



AGENDA

1. INTRODUCTIONS
2. CURRENT CONSTRUCTION
3. FRAMEWORK PLAN
4. JOE LOUIS GREENWAY REROUTE
5. GORDIE HOWE COMMUNITY BENEFITS



Photo Credit: Kenneth Wilson

JLG TEAM INTRODUCTIONS



JAMES HANNIG
Deputy Director
Complete Streets,
DPW



ADAM JADUN
JLG Project Manager,
DPW



JAY BIERNAT
Project Manager and Analytics
Specialist, DPW



DAVID TOBAR
Construction Administration
(off-street), GSD



CANDACE CALLOWAY
Construction Coordinator
(off-street), GSD



CHRISTINA PELTIER
Project Lead,
GSD



HANAN YAHYA
Project Manager,
GSD



IDREES MUTAHR
Project Manager,
GSD

HLAND
ARK

HAMTRAMCK

Hamtramck Dr

Woodward Avenue

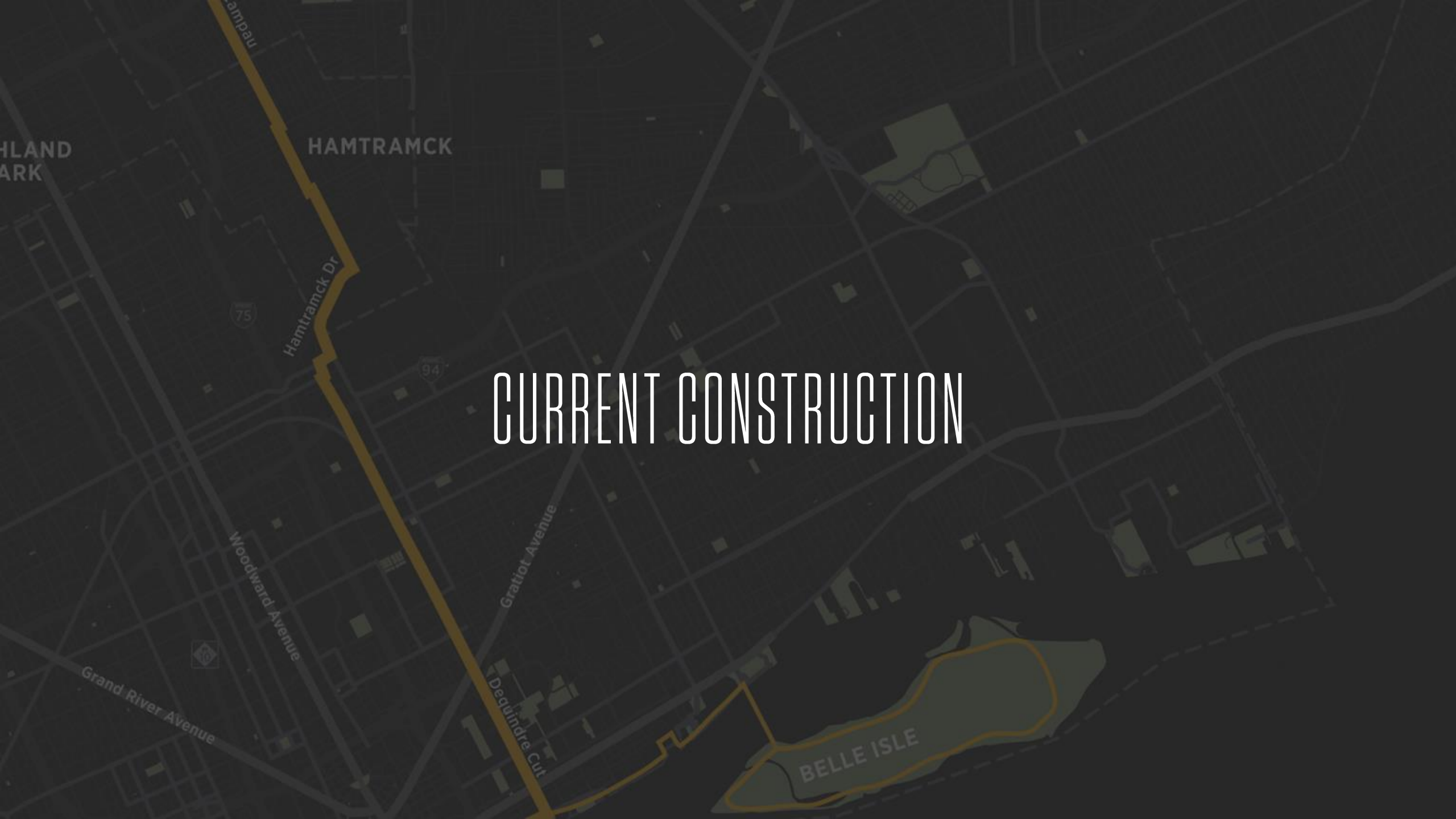
Gratiot Avenue

Dequindre Cut

Grand River Avenue

BELLE ISLE

CURRENT CONSTRUCTION



CURRENT CONSTRUCTION



WARREN GATEWAY PARK

Complete Fall 2023



WARREN TO JOY

Open



OAKMAN TO FULLERTON

Complete 2024



DAVISON TO JOSEPH CAMPAU

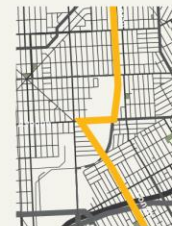
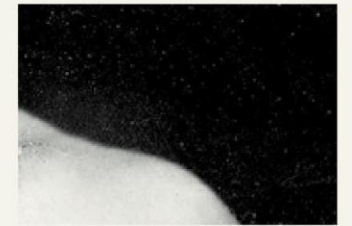
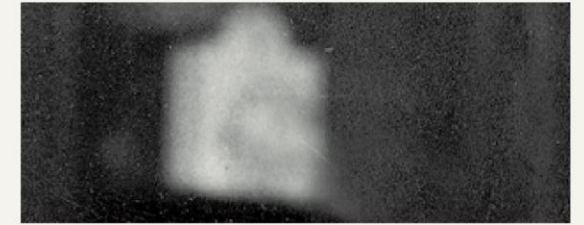
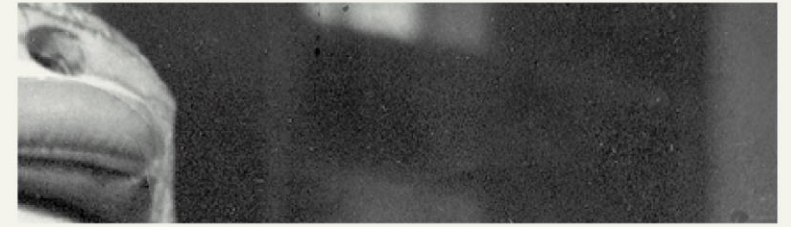
Complete 2025



JOE LOUIS GREENWAY

FRAMEWORK PLAN

www.joelouisgreenway.com



FRAMEWORK OUTREACH

14 Joe Louis Greenway
Public Meetings with

608 Attendees

44 Additional Meetings
and Events

Ongoing Engagement at
Design and
Implementation Stage



WHAT FEATURES WILL YOU NEED ON
THE GREENWAY IN THE FUTURE?

- *1) Shower / Bathrooms
- 2) Vending Opportunities
- 3) Built in Artist Space
- 4) Gathering Space
- 5) Emergency Phone
- 6) Real-Time Video
- 7) Emergency Kits
- 8) Residential Zoning
- 9) Workout Spaces

JOE LOUIS GREENWAY

POTENTIAL IMPROVEMENTS
CONCRETE AND NOTES

#1
#2
#3
#4
#5
#6
#7
#8
#9
#10
#11
#12
#13
#14
#15
#16
#17
#18
#19
#20

THE VISION

The greenway will:

1. Enhance residents' **quality of life** and promote community development
2. Promote **equality and equity**
3. **Connect** people and places



FRAMEWORK ROUTE

During the Framework Planning, the Joe Louis Greenway team showed the route on Vernor or Bagley to Clark Park.

We heard that residents and community leaders preferred West Grand Boulevard over Clark Park for the following reasons:

- Protect trees
- Do not add more pavement to the park
- Keep Clark Park as a neighborhood park
- Vernor is too congested



HLAND
ARK

HAMTRAMCK

Hamtramck Dr

JOE LOUIS GREENWAY REROUTE

Woodward Avenue

Gratiot Avenue

Dequindre Cut

Grand River Avenue

BELLE ISLE



WHY ARE WE CHANGING THE ROUTE

Mexicantown Mainstreet stakeholders asked in 2022 if the City would consider rerouting the Joe Louis Greenway to Clark Park for the following reasons.

- Safe neighborhood route to Clark Park
- Connect to Amelia Earhart Elementary Middle School, Western International High School, and Angel M. Garcia Jr. Athletic Complex
- Concerns about traffic on Fort Street



Safe Routes to School



Traffic on Fort Street

COMMUNITY ENGAGEMENT

2023 Community Engagement

- Consulted stakeholders including the:
- Clark Park Coalition
- Principal Villareal of the Amelia Earhart Middle School
- Simone Sagovac of Southwest Detroit Environmental Vision

Presented at the following community meetings:

- May 16th - Hubbard Farms Neighborhood Association Monthly Meeting
- May 17th - Mexicantown Mainstreet AB Meeting
- May 18th - District 6 Department of Neighborhoods Meeting



PROPOSED ROUTE

2019 Framework Route vs
2023 Proposed JLG Route



WEST GRAND BOULEVARD

Facing South

Existing on-street unprotected bike lanes



WEST GRAND BLVD

WEST LAFAYETTE BLVD

WEST LAFAYETTE BOULEVARD

Facing West

Proposed two-way on-street protected cycle track on the north side



WEST LAFAYETTE BOULEVARD

Facing West

Proposed off-street cycle track on the north side, where the current sidewalk is shown in front of the Yorba Hotel parking lot



WEST LAFAYETTE BLVD

YORBA HOTEL

HUBBARD



WEST LAFAYETTE BOULEVARD

Facing West

Proposed off-street cycle track on the north side, south of Amelia Earhart Middle School



AMELIA
EARHART
MIDDLE
SCHOOL



WEST LAFAYETTE BOULEVARD

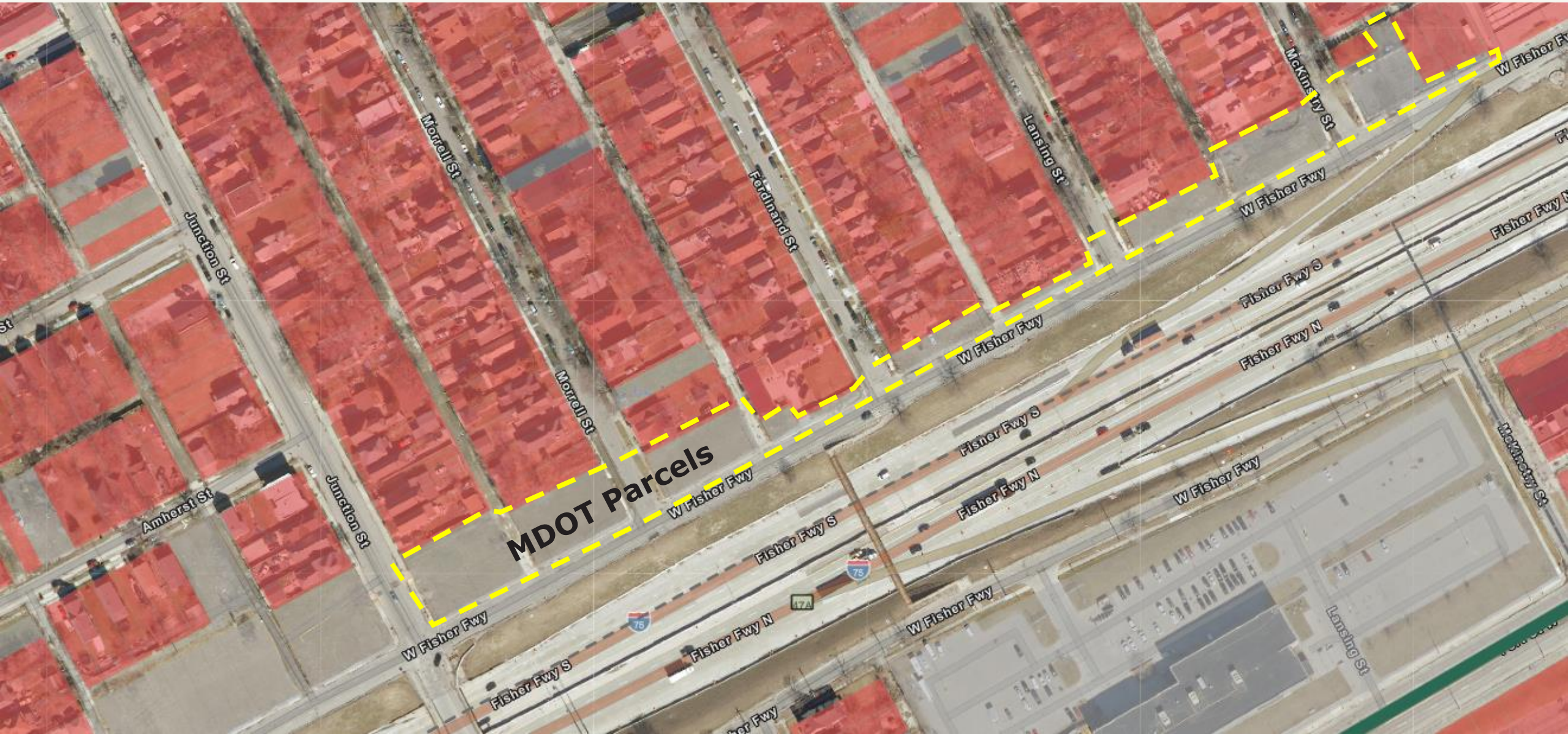
Facing West

Proposed off-street cycle track north of the existing sidewalk but south of the baseball fields.

It would weave between the trees. The fence would be replaced and shift slightly north.



MDOT PARCELS



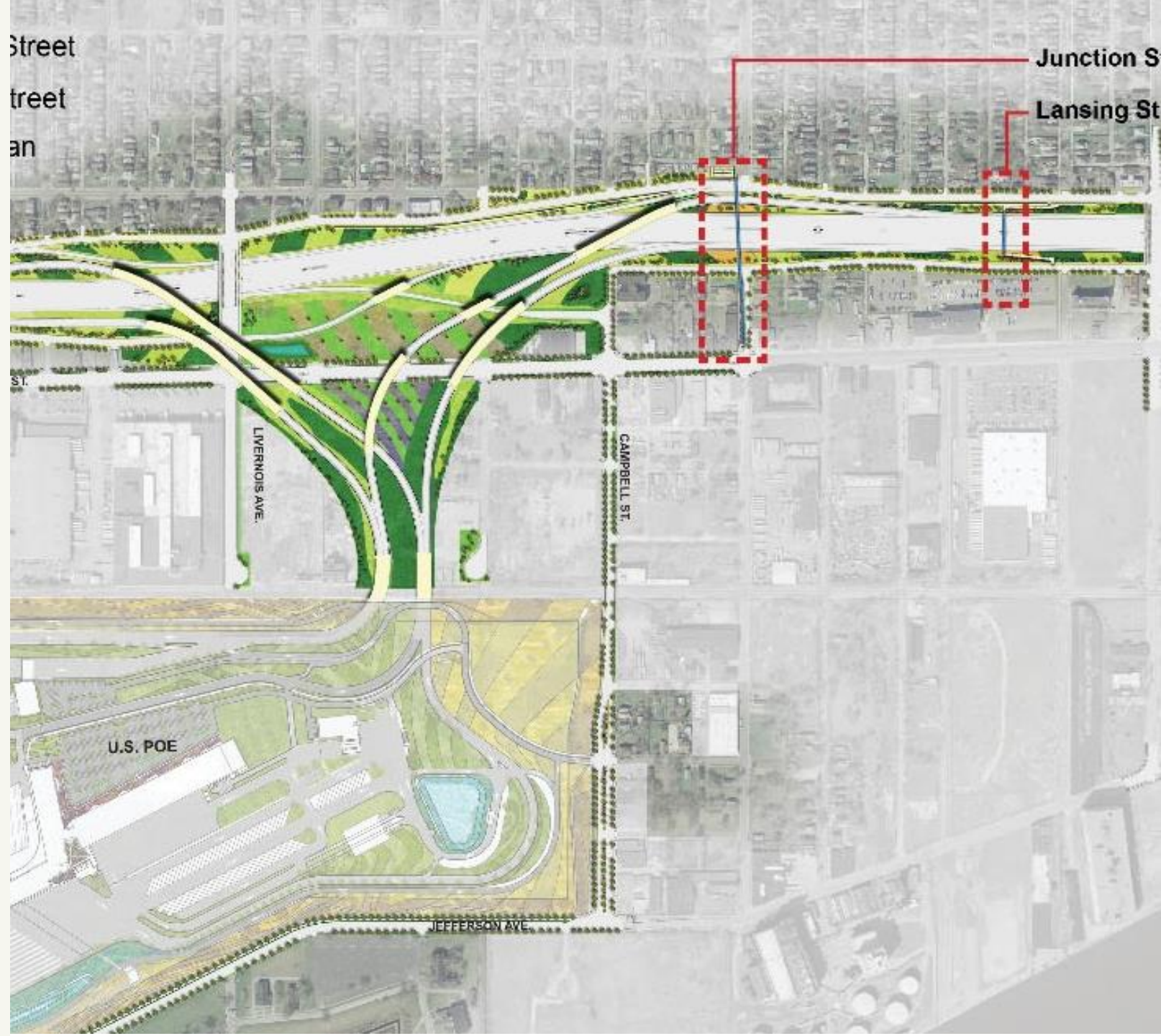
JUNCTION, FORT, CAMPBELL

Constructed by Windsor Detroit Bridge Authority as part of the Gordie Howe International Bridge.

Junction Street: Non-motorized bridge will be constructed spanning from just north of Fort over the NB service drive and I-75 and landing north of the SB I-75 service drive.

Fort Street: Protected bike lanes will be installed between Junction and Green street.

Campbell Street: Off-street shared-use path.



QUESTIONS AND COMMENTS



HIGHLAND
PARK

HAMTRAMCK

Hamtramck Dr

Woodward Avenue

Gratiot Avenue

Dequindre Cut

Grand River Avenue

BELLE ISLE

GHB COMMUNITY BENEFITS

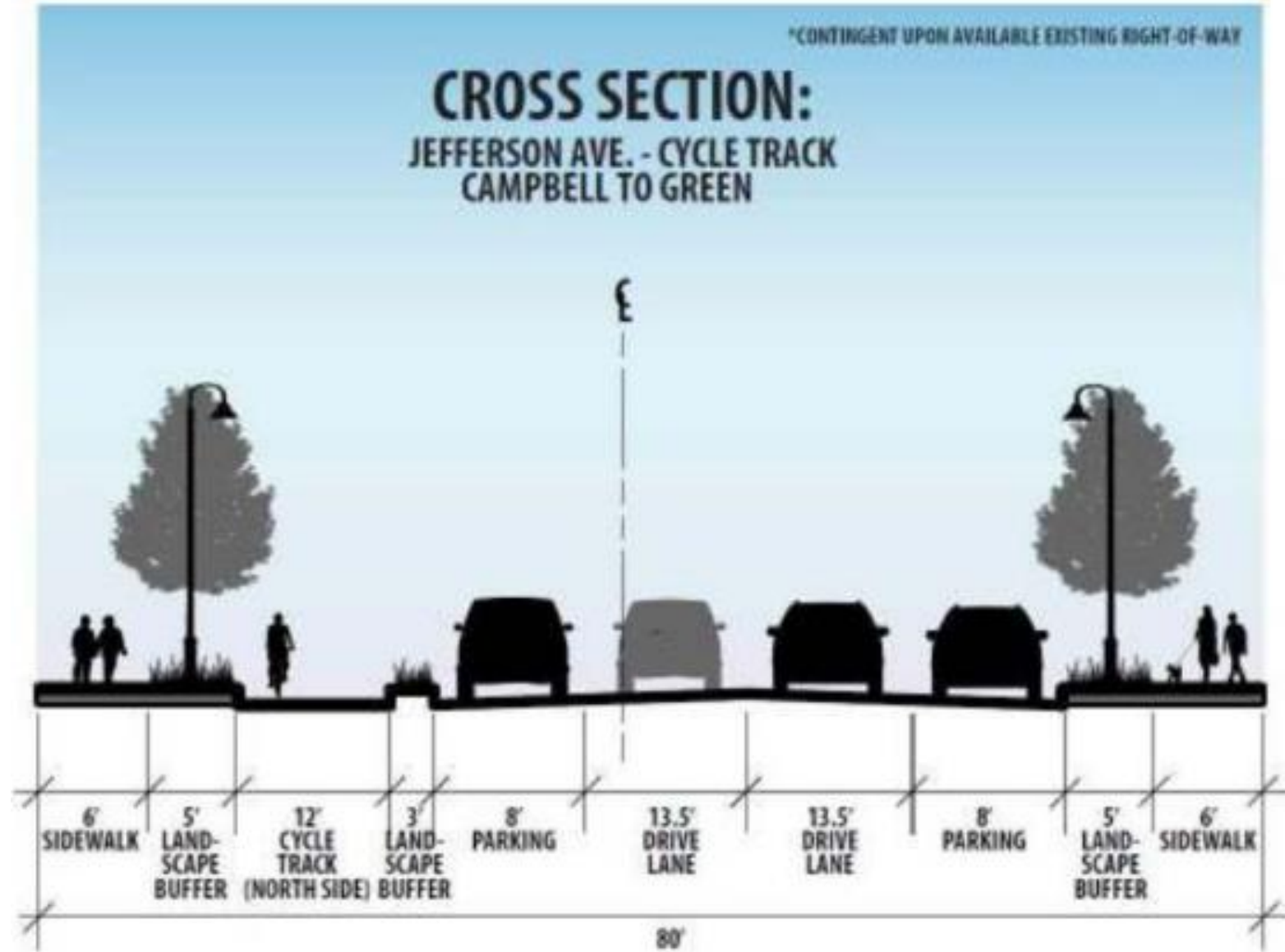
BICYCLE IMPROVEMENTS IN SOUTHWEST/HUBBARD FARMS

\$1 million CDN to improve cycling facilities in Southwest Detroit.

- The project should expand adjacent trails to connect to Gordie Howe International Bridge (GHIB).
- All project funds must be expended by March 31, 2025.
- Cannot be spent in the footprint of the point of entry.



GHB COMMUNITY BENEFITS: CLARK/JEFFERSON CYCLETRACK



PROJECT TIMELINE

1. **Jefferson-Clark Cycletrack**
March 2025
2. **W Lafayette - Clark to Grand**
Summer 2026
3. **Gordie Howe International Bridge**
December 2024 (original completion date)
4. **W Lafayette - Junction to Clark**
TBD (unfunded)



QUESTIONS AND COMMENTS



STAY INVOLVED

QUESTIONS, COMMENTS:
joelouisgreenway@detroitmi.gov
(313)279-8248

Adam.Jadun@detroitmi.gov
(313)269-2525

FOLLOW FOR UPDATES:

- ✉ [Bit.ly/Subscribe2JLG](https://bit.ly/Subscribe2JLG)
- 🌐 www.joelouisgreenway.com
- 📘 [Facebook.com/JoeLouisGreenway](https://www.facebook.com/JoeLouisGreenway)

