



PLAN YOUR PARK

Take part in shaping your
community's park!

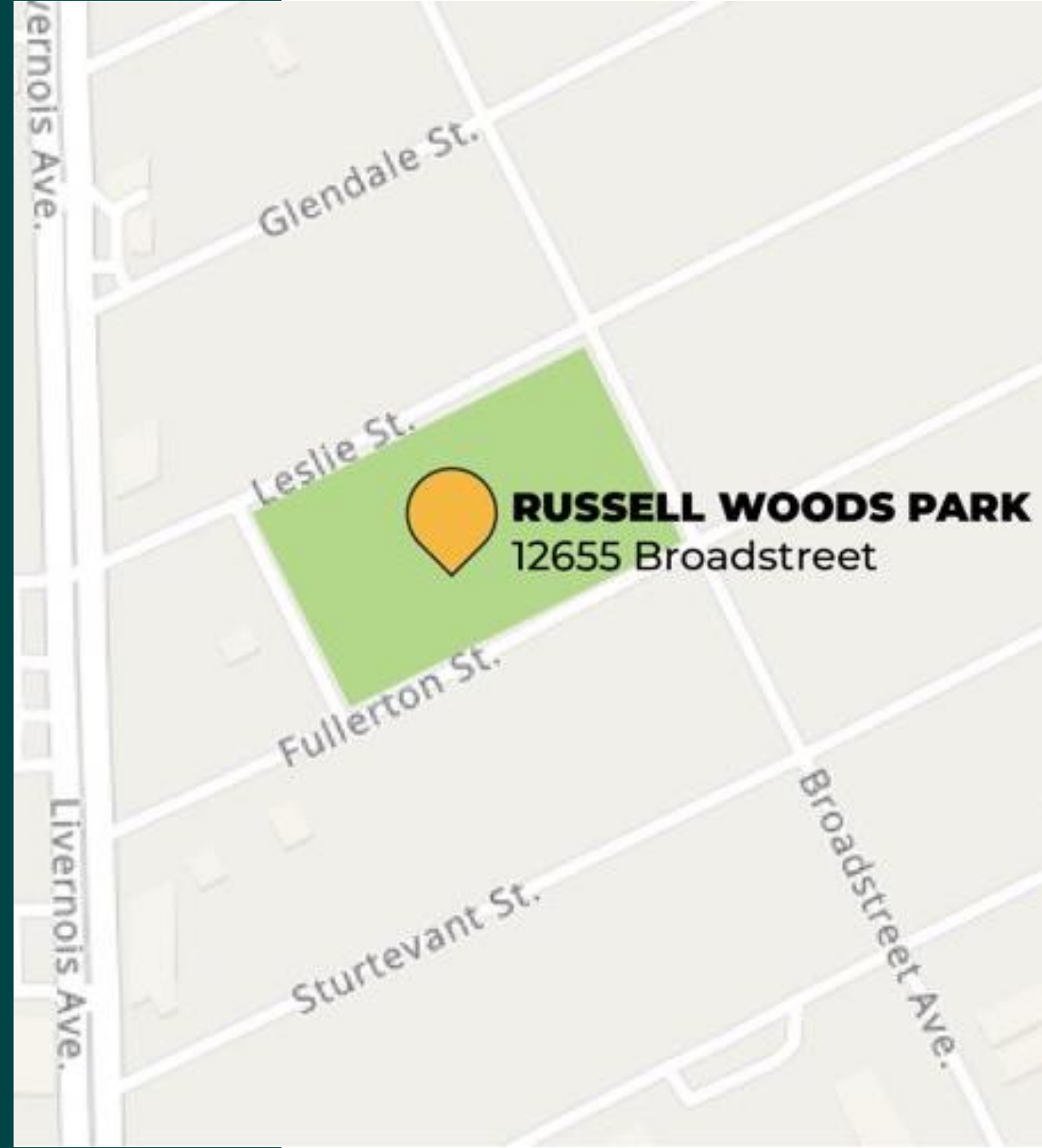
Parks and Recreation

Russell Woods Park

April 5, 2023

Project Background

- The City of Detroit Parks and Recreation Division (DPRD) recently received funding for improvements at Russell Woods Park.
- This is our **second meeting** to hear what amenities would best serve the families and residents that use the park.
- After community engagement the project will be finalized and submitted to the **Historic Advisory Board** for Approval
- Construction will likely start in Fall **of 2023.**



PROJECT SHEDULE

PARK IMPROVEMENTS AT RUSSELL WOODS PARK



WHAT WE HEARD:

What improvements would you like to see in the park?

General consensus "Yes"

- 1) Enhanced entry gardens
- 2) Improve existing paths
- 3) Special events space / Jazz festival
- 4) New trees & existing tree health



98% voted for enhanced entry gardens



93% voted for improve existing paths



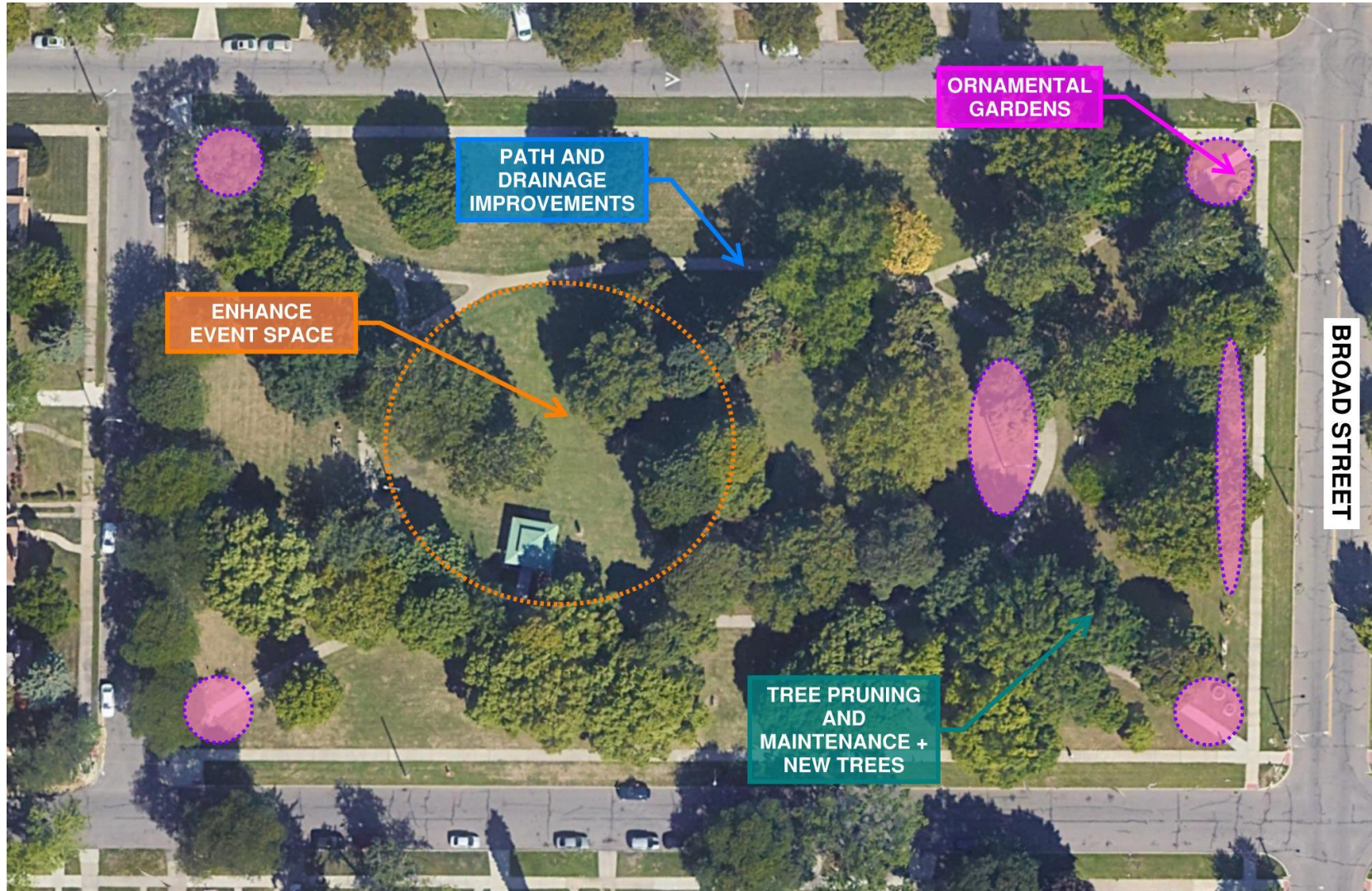
86% voted for special event space / Jazz festival



72% voted for new trees & existing tree health



WHAT WE HEARD:



General consensus "Yes"

- 1) Enhanced entry gardens
 - Ornamental gardens at corners and center of park. Maintained by GSD.
- 2) Improve existing paths
 - No new layout, just minor repairs and improvements to the drainage around the paths.
- 3) Special events space / Jazz festival
 - Maintain the space for the festival. Minor ground surface improvements.
- 4) New trees & existing tree health
 - Prune existing trees in good health and condition, remove scrub or damaged trees, plant new trees.



WHAT WE HEARD:

What improvements would you like to see in the park?

General consensus "No"

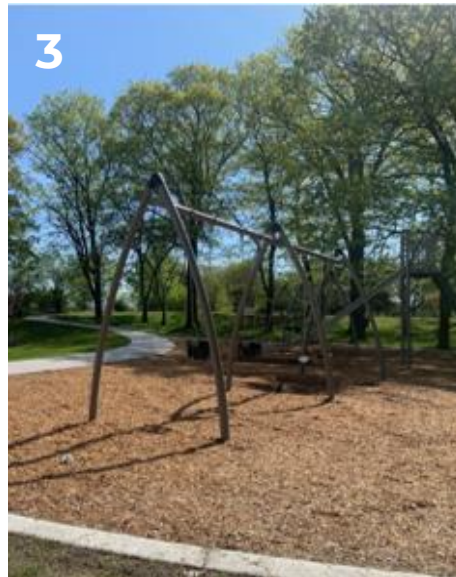
- 1) Traditional playground
- 2) Play sculpture
- 3) Swings



76% voted no or neutral for a traditional playground



75% voted no or neutral for a play sculpture



73% voted no or neutral for swings



WHAT WE HEARD:

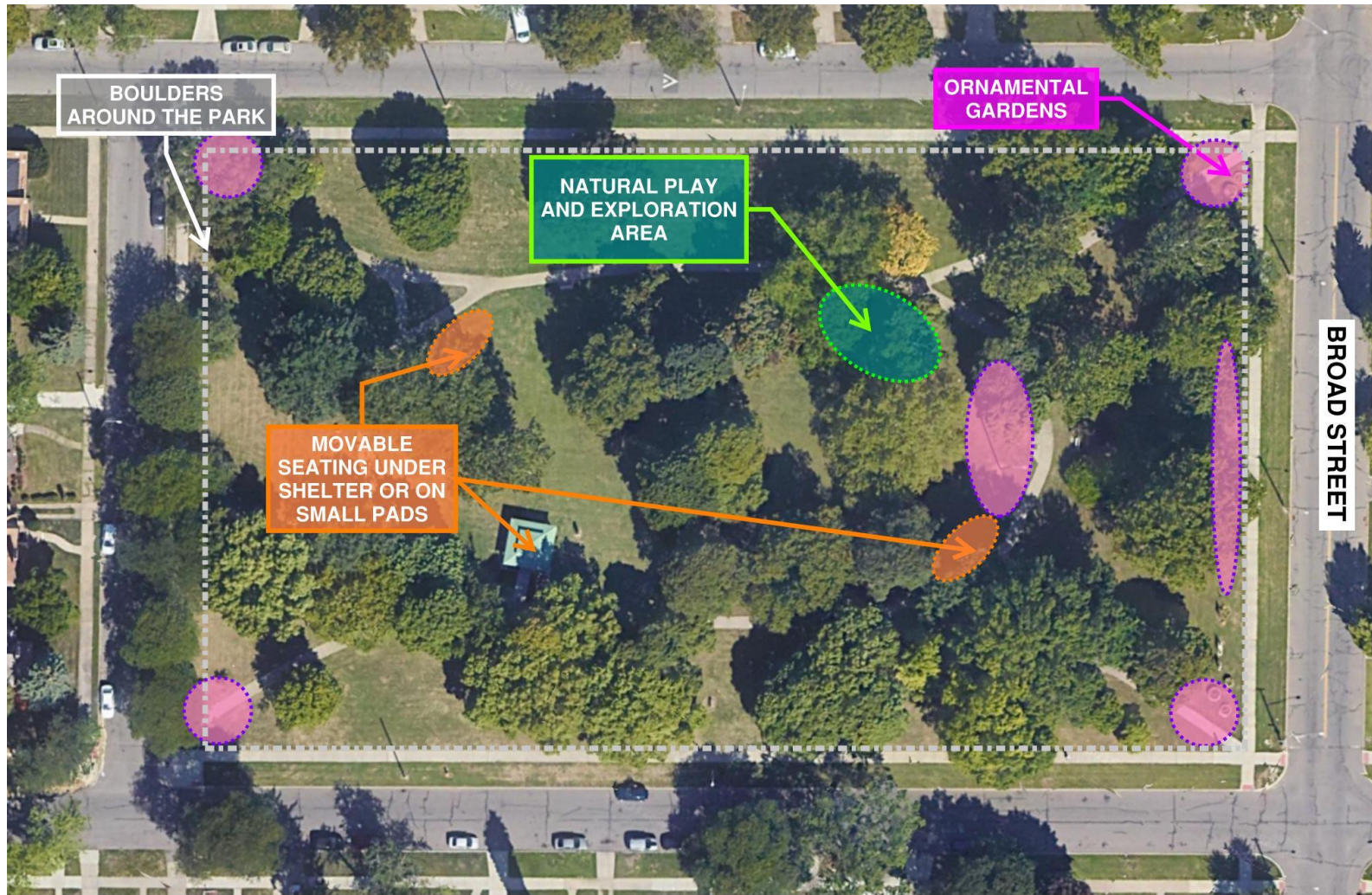
What improvements would you like to see in the park?

Mixed feedback, up for discussion:

- 1) Boulders
- 2) Nature play
- 3) Picnic tables



WHAT WE HEARD:

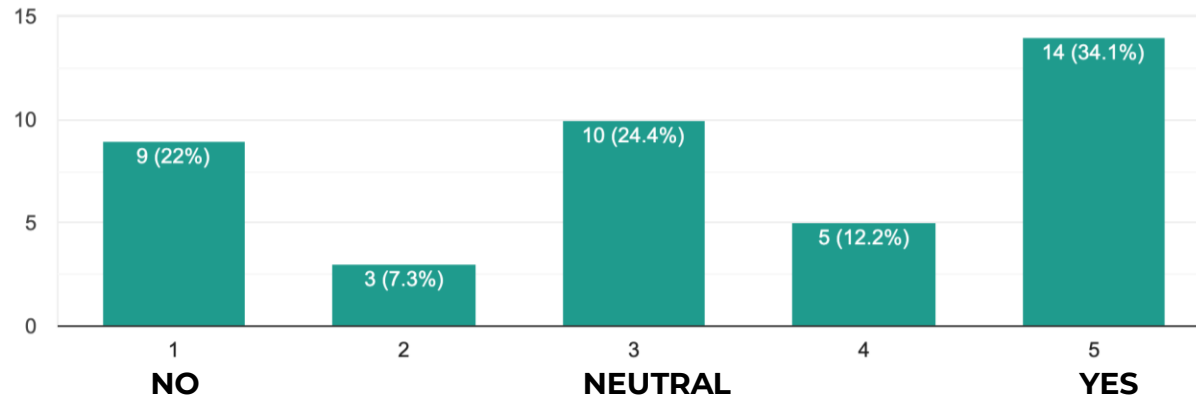


WHAT WE HEARD:

What improvements would you like to see in the park?

Add boulders

- 1) 29% No
- 2) 25% Neutral
- 3) 46% Yes



VOTING ACTIVITY #1

Proposed compromise: Add additional trees to the perimeter of the park with some boulders spaced between them to prevent vehicles from driving in the park.

Vote

- "Yes"
- "No"

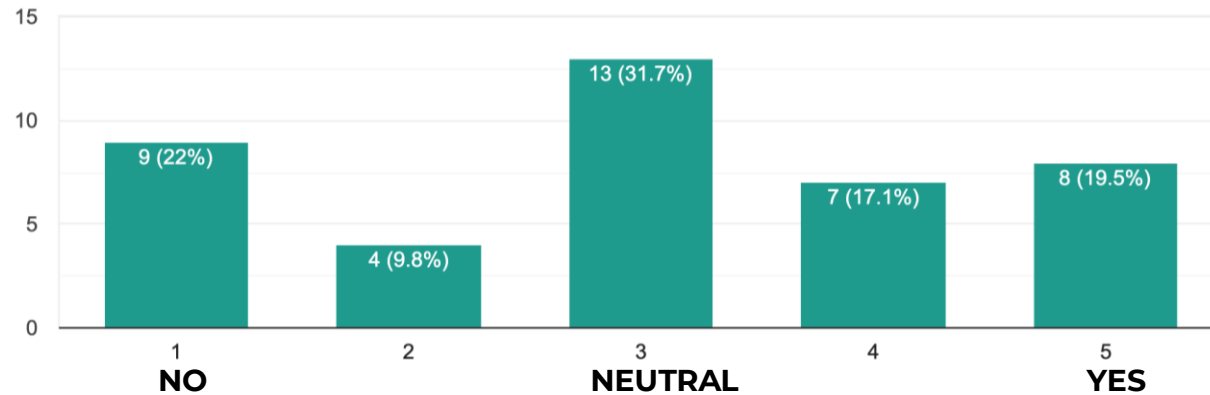


WHAT WE HEARD:

What improvements would you like to see in the park?

Add nature play / exploration area

- 1) 32% No
- 2) 32% Neutral
- 3) 36% Yes



VOTING ACTIVITY #2

Proposed compromise: Add a few logs and boulders to the wooded area of the park that match the historic and natural character of the park, but still provide some interest for kids.

Vote

- "Yes"
- "No"

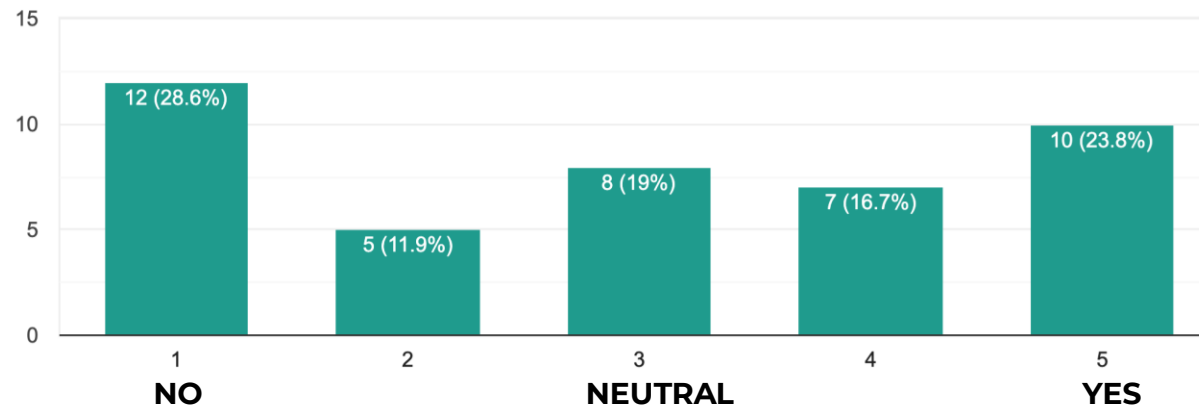


WHAT WE HEARD:

What improvements would you like to see in the park?

Add picnic tables or picnic area

- 1) 40.5% No
- 2) 19% Neutral
- 3) 40.5% Yes



VOTING ACTIVITY #3

Proposed compromise: Add movable picnic tables under the shelter and on small concrete or gravel pads near the path that can be removed and relocated if they become a regular issue for residents and park users.

Vote

- "Yes"
- "No"



ADDITIONAL FEEDBACK & DISUCSSION



GENERAL SERVICES DEPARTMENT
Parks & Recreation
Division

THANK YOU!



**PLAN
YOUR
PARK** 

Take part in shaping your
community's park!

Stay up to date on the project!

↳ detroitmi.gov/RussellWoodsPark

Contact us:

Juliana Fulton

Deputy Chief Parks Planner

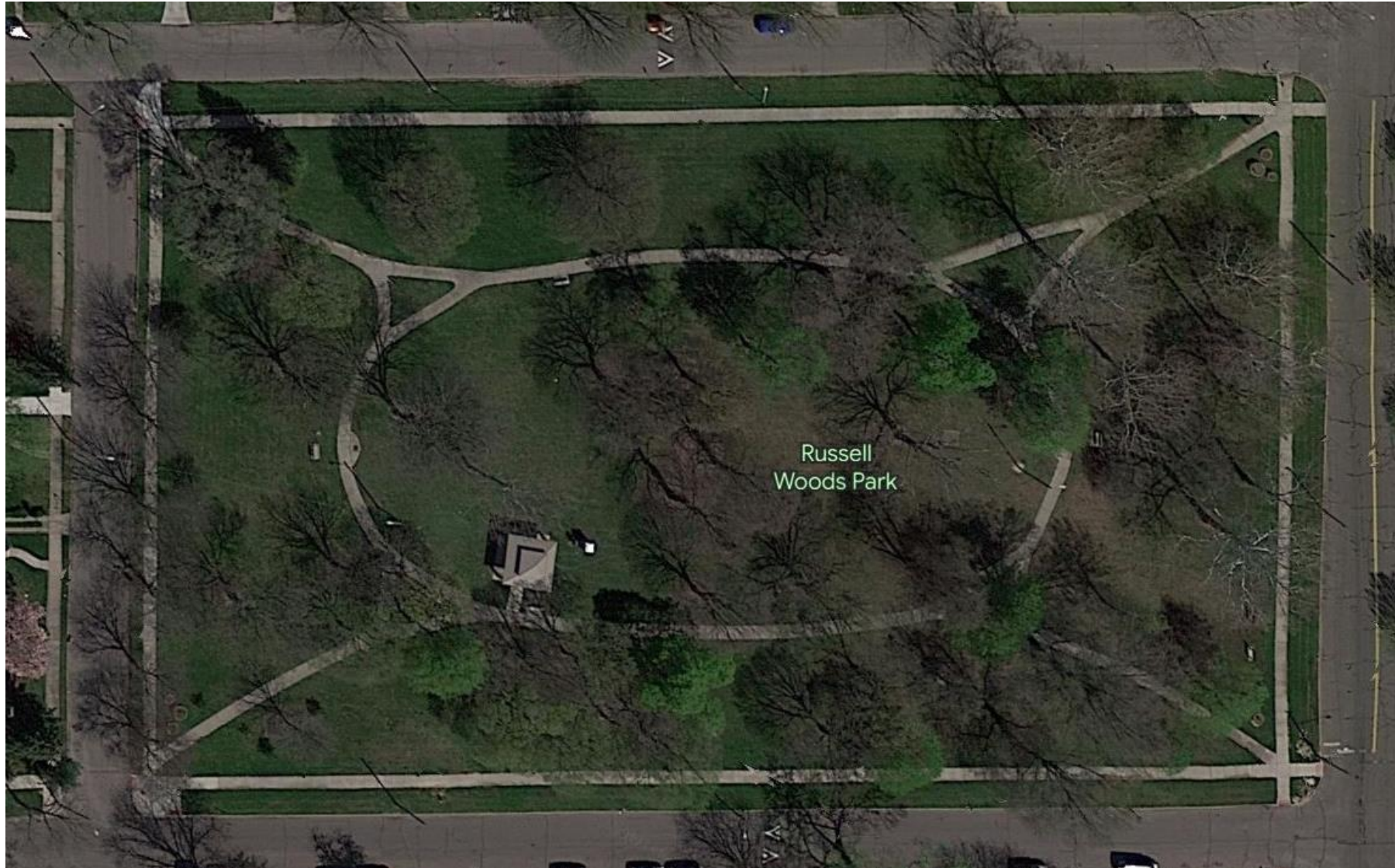
fultonj@detroitmi.gov

John DeRuiter

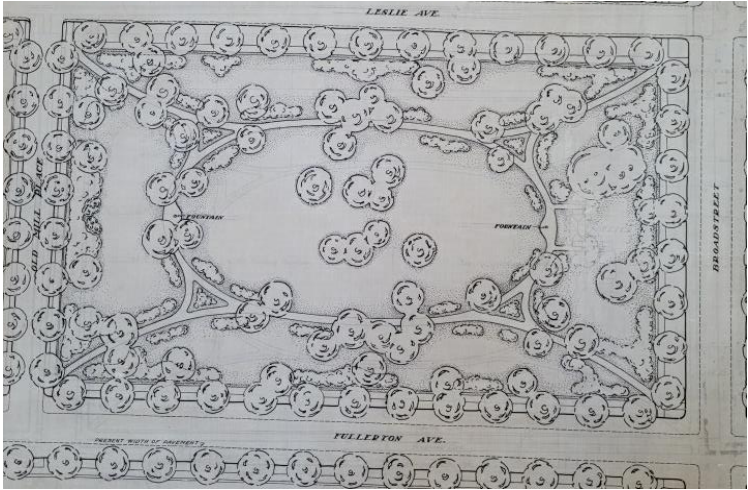
Assistant Chief Landscape Architect

deruiterj@detroitmi.gov

EXISTING CONDITIONS



EXISTING CONDITIONS



Historic 1920's Plan