



PATTON PARK

Long-Term Vision
2023



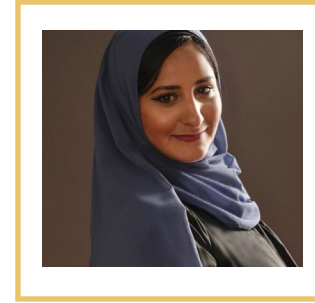
LONG-TERM VISION TEAM



DARA O'BYRNE
Chief Parks Planner, Detroit



SHAMORI WHITT
Senior Parks Planner, Detroit



HANAN YAHYA
Joe Louis Greenway
Project Manager, Detroit



JOHN DERUITER
Landscape Architect, Detroit



LEAH GROYA
Planner
livingLAB



COURTNEY PIOTROWSKI
Landscape Architect
livingLAB

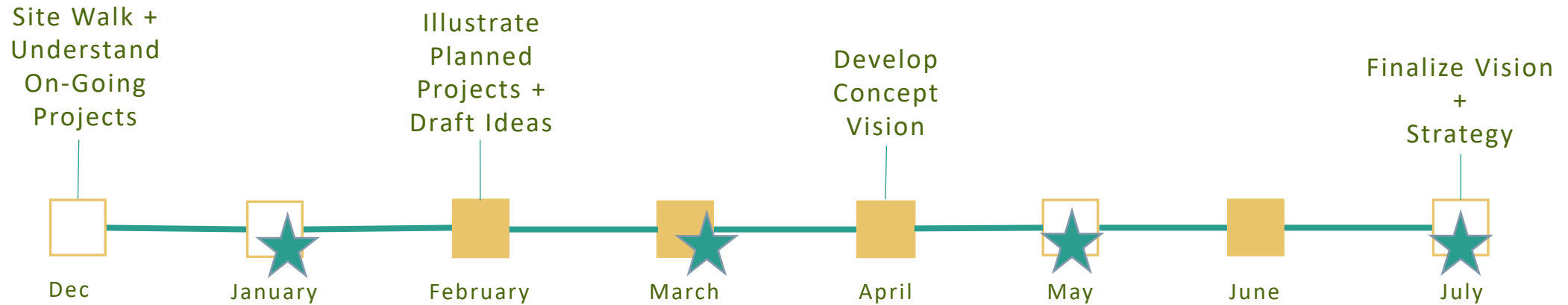
Orange lines are property lines.


The **blue** line is the route on the Joe Louis Greenway that will be coming through Patton Park





ANTICIPATED SCHEDULE



 **Stakeholder Committee
Virtual Engagement Meetings**

- Friends of Patton Park
- Springdale Woodmere Block Club
- SW Environmental Vision
- Congress of Communities
- SW Detroit Business Association
- Urban Neighborhoods Initiatives
- Detroit Parks Coalition
- Pablo Davis Center Residents Council
- LA SED Inc
- Soccer Organizations

 **Engagement**

- Online Survey in English, Spanish, Arabic **(February)**
- (4) Small Group Meetings with Stakeholder Organizations to gather input **(March)**
- (1) Community Meeting with interpreters available **(April)**
- (2) Evenings - Setup in Recreation Center to gather feedback on priorities with interpreters available **(June)**

A FEW QUICK
UPDATES ON THE
NEXT PAGES

Joe Louis Greenway + Trust Fund Grant

NFWF Green Parking Lot Grant

ORLP Grant Submitted



PATTON PARK



SEGMENT CHARACTERISTICS

Off-street two-way cycle track with decomposed fine aggregate shoulders, separated from pedestrian path by lawn or landscape buffer.



ENTRY PLAZAS

1. Patton Recreation Center
2. Woodmere & Vernor
3. Lonyo & Dix



WHY WAS THIS SEGMENT SELECTED?

Community Input: Community members expressed a strong desire to connect to the recreation opportunities at Patton Park. Residents have also suggested a nature trail loop connection at Patton Park.

Connections: This segment provides direct access to the regional Patton Park with athletic fields, Patton Recreation Center and other passive recreation. This segment also provides opportunities to connect to the Delray Recreation Center, the Southwest Detroit Greenway and improved non-motorized access to the City of Dearborn.

Environmental: This segment is able to take advantage of improved green stormwater management infrastructure and associated educational programming planned for Patton Park.

Comfort and Safety: The off-street greenway has alignment through a large green space and is separated from vehicular traffic.

Builds on Other Work: Engagement completed by Southwest Detroit Business Association and PEA confirmed this connection was important to community members in order to link to the Downriver Linked Greenways near the proposed Fort Rouge Gateway (FRoG) Park. Additionally, this project ties into the Iron Belle Trail - a path that extends more than 2,000 miles from Belle Isle in Detroit to Michigan's Upper Peninsula.

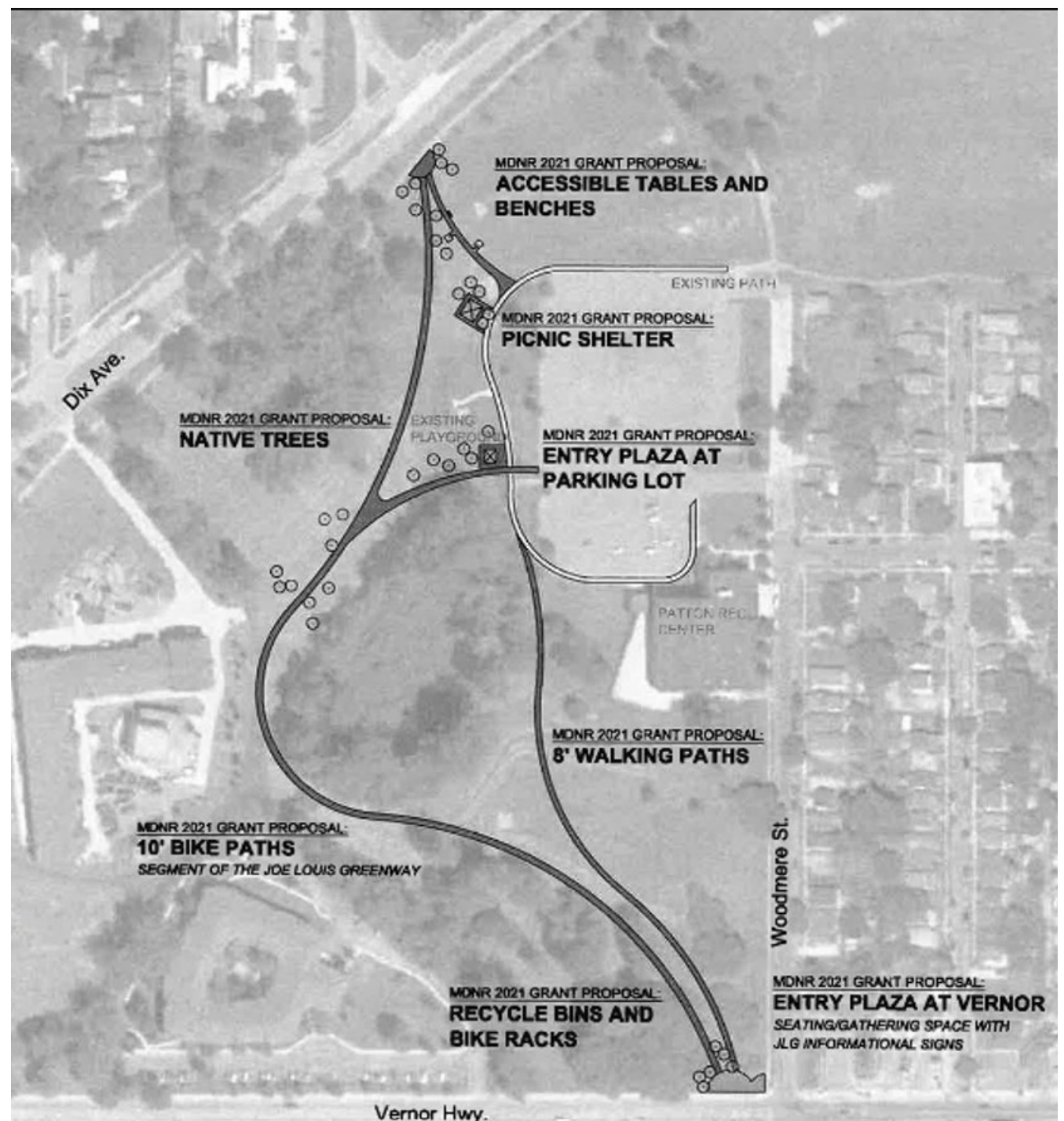
2023-2024 JOE LOUIS GREENWAY PATHWAYS

\$650,000 Budget: MDNR Grant Funds
 Accessible tables and benches
 Tandem pedestrian walking path and bike paths stretching from Dix Avenue to Vernor Hwy
 Entry plazas at Patton Recreation Center and Woodmere & Vernor
 Native trees
 Recycle Bins and Bike Racks

FUTURE GREENWAY AMENITIES

Entry plaza at Lonyo & Dix
 Additional landscaping, Native trees
 Wayfinding & interpretive signage,
 Mogo Stations
 Seating arrangements

WHAT ARE YOUR IDEAS? SHARE THEM TODAY OR SEND US AN EMAIL AT JOELOUISGREENWAY@DETROITMI.GOV



MDNR 2021 GRANT PROPOSAL:
ACCESSIBLE TABLES AND BENCHES

MDNR 2021 GRANT PROPOSAL:
PICNIC SHELTER

MDNR 2021 GRANT PROPOSAL:
NATIVE TREES

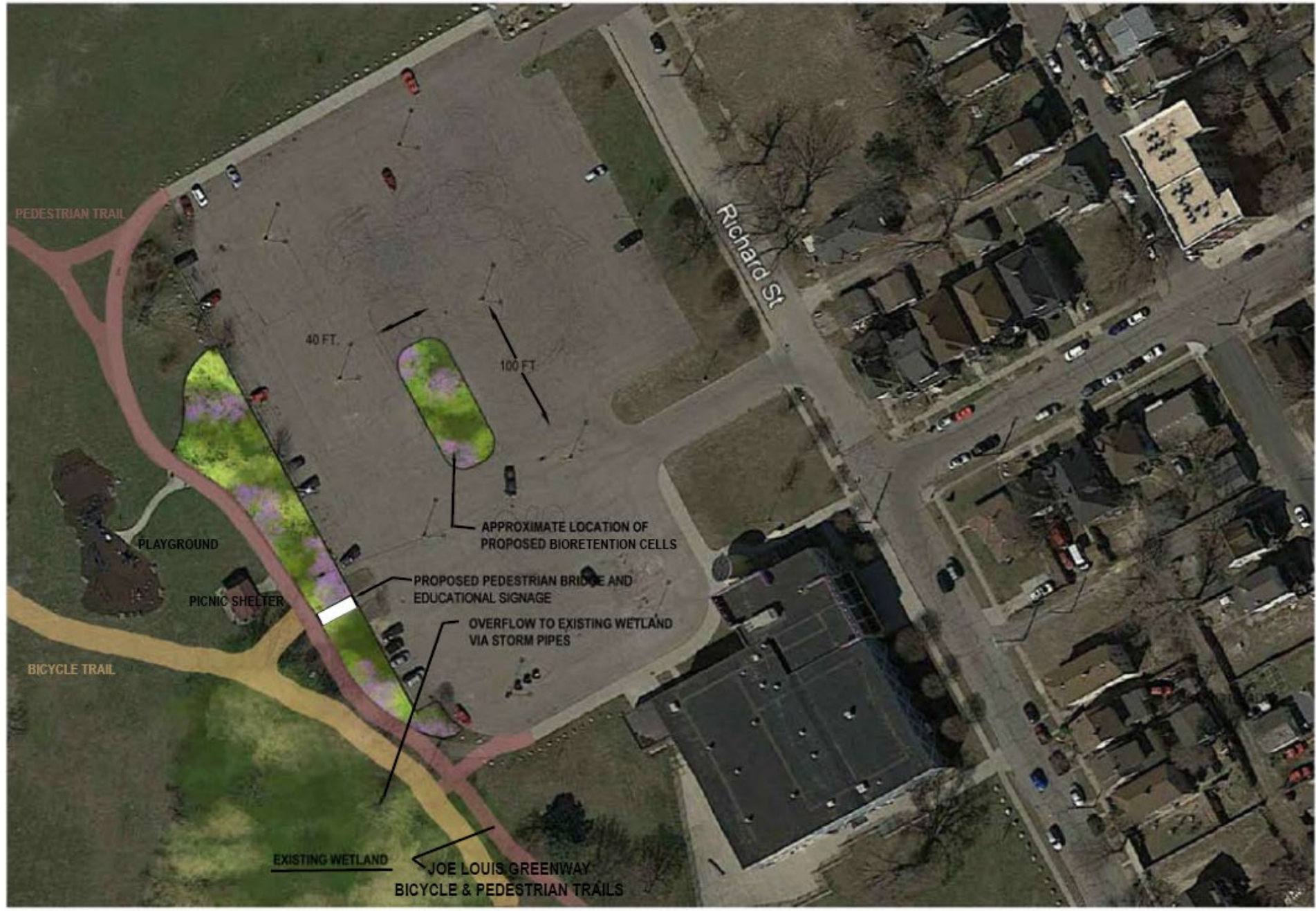
MDNR 2021 GRANT PROPOSAL:
ENTRY PLAZA AT PARKING LOT

MDNR 2021 GRANT PROPOSAL:
8' WALKING PATHS

MDNR 2021 GRANT PROPOSAL:
10' BIKE PATHS
 SEGMENT OF THE JOE LOUIS GREENWAY

MDNR 2021 GRANT PROPOSAL:
RECYCLE BINS AND BIKE RACKS

MDNR 2021 GRANT PROPOSAL:
ENTRY PLAZA AT VERNOR
 SEATING/GATHERING SPACE WITH JLG INFORMATIONAL SIGNS



PATTON PARK BIORETENTION PROJECT

CONCEPTUAL PLAN | NOT TO SCALE

The City submitted an ORLP grant (to the state and National Park Service) on January 31st. We won't know if our application is successful until late 2023.



PATTON PARK
ORLP GRANT PROPOSAL SITE PLAN

01/31/23