

WELCOME!

Rogell Park Design Update

Community Virtual Meeting

January 27, 2021

With Poll Results from Live Zoom Presentation



How To Participate On ZOOM



EVERYONE IS MUTED TO BEGIN



CLICK ON 'RAISE HAND' SYMBOL in PARTICIPANTS BOX
OR Type in the ZOOM WEBINAR CHAT BOX



PRESS *9 TO RAISE YOUR HAND



Recording of the meeting and slides will be available on the project website in a few days. detroitmi.gov/rogell



Jeff Klein, PLA, ASLA, CPSI

*Deputy Chief of
Landscape Architecture*

*General Services
Department*



Juliana Fulton

Park Planner

*General Services
Department*

*Coordination between
Planning & Development
Department and the General
Services Department*



Michele Flournoy

Urban Designer

Planning Department



Farhat Chaudhry

Landscape Designer

*General Services
Department*

livingLAB

giffels 
webster

MCINTOSH
PORIS ASSOCIATES

 SME


Peter Basso Associates Inc
CONSULTING ENGINEERS


BARR

A design team was hired in June 2020 to build upon the work completed in the past few years, further engage the community, and develop construction documents



Courtney Piotrowski, ASLA, PLA

Landscape Architect

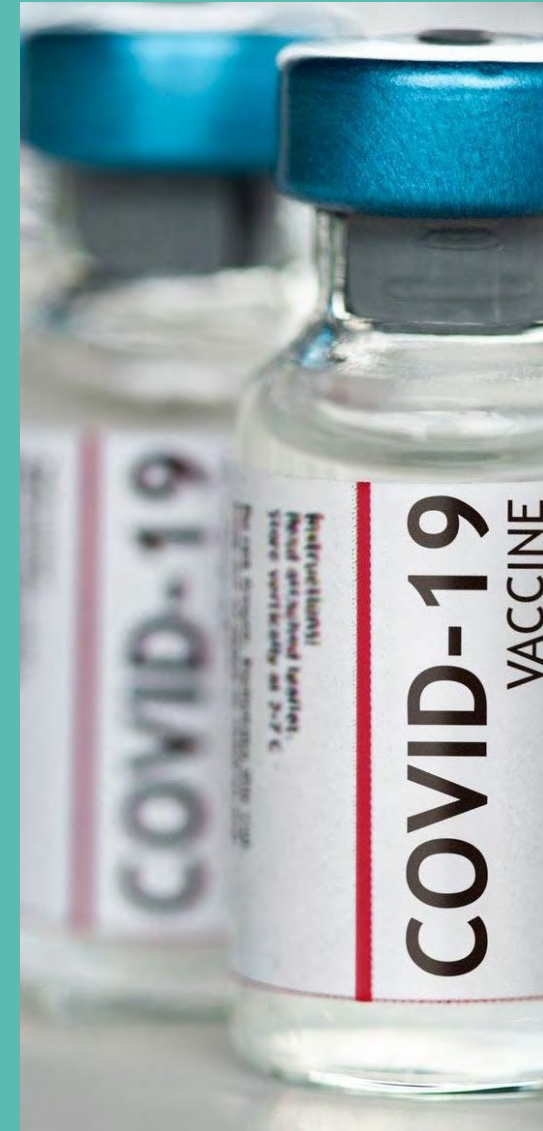
livingLAB

Detroit Headquartered

Women-Owned

Design Firm

COVID INFORMATION



Covid-19 Hotline
(313) 876-4000



Detroit Health Department
COVID-19
dhdoutbreak@detroitmi.gov

For info and resources visit detroitmi.gov

Or contact your District 1 Manager, Karla Williamson williamsonk@detroitmi.gov

or Kya Robertson robertsonkya@detroitmi.gov



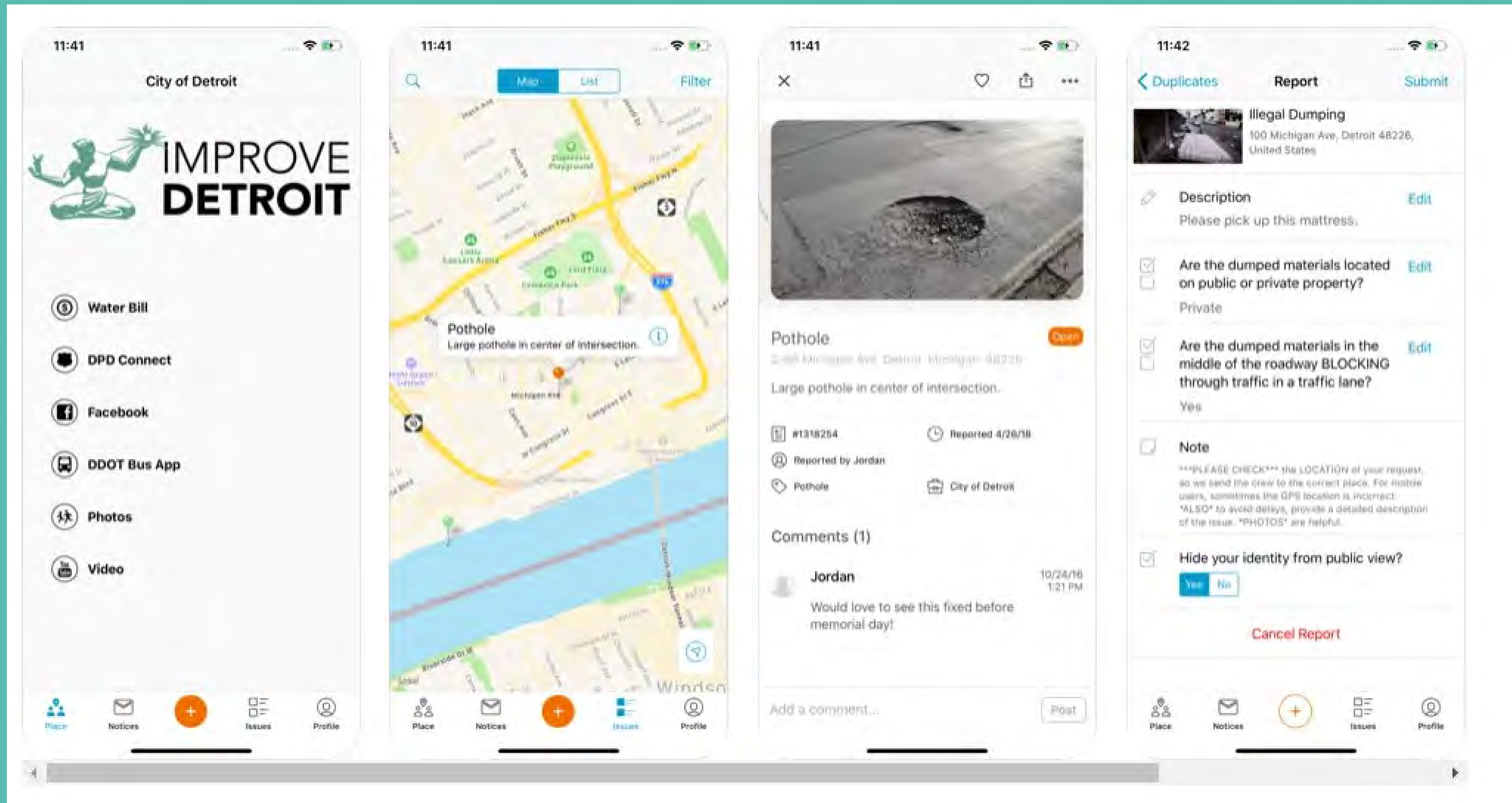
**DETROIT
PARKS & REC
STRATEGIC PLAN**

detroitmi.gov/parksplan



Let us know what you want for the future of
Parks & Rec in Detroit - **TAKE THE SURVEY!**

IMPROVE DETROIT ONLINE -- OR USE APP



Agenda

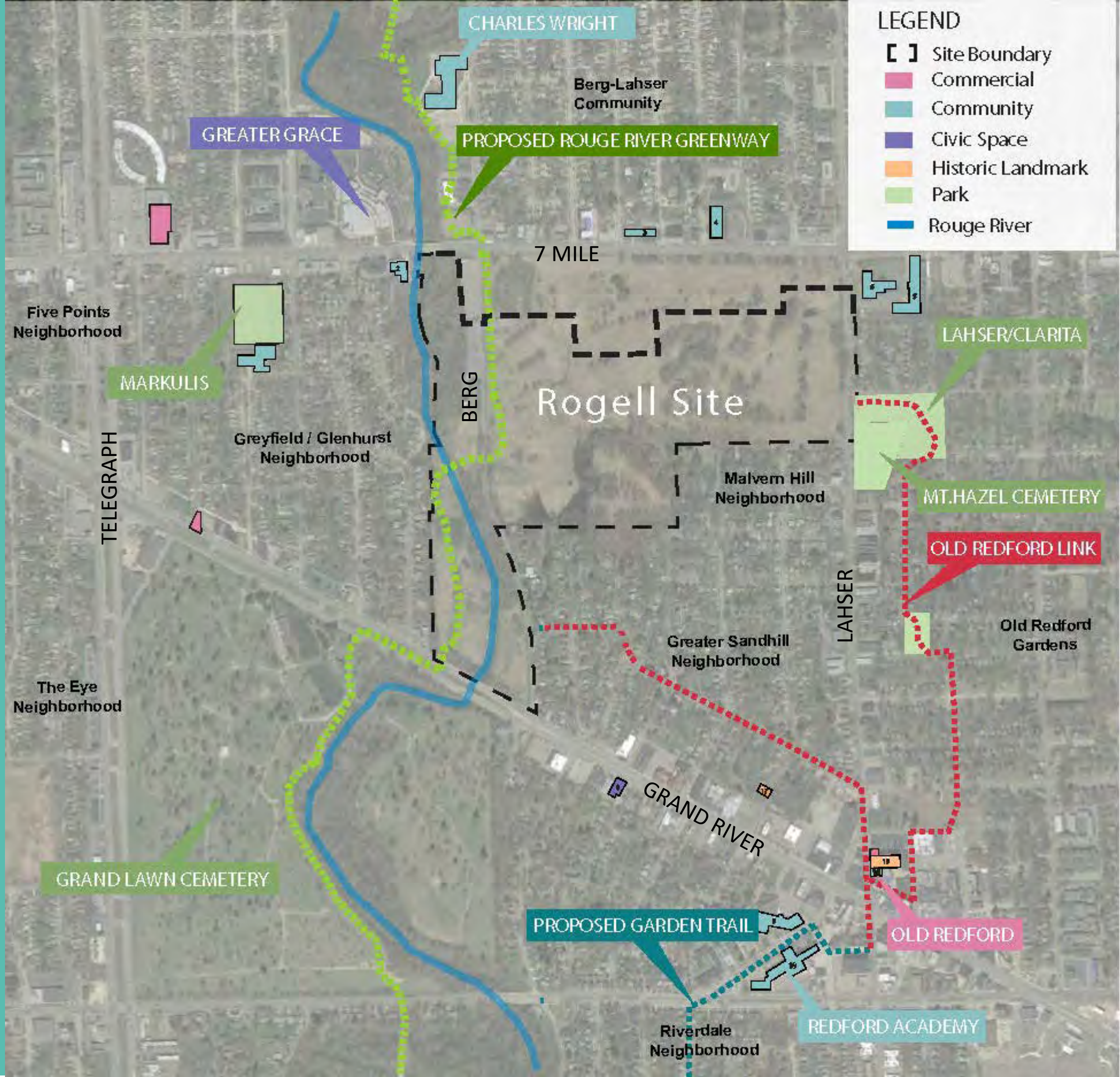
- 1** BRIEF UPDATE ON NEARBY CITY PROJECTS
- 2** PROJECT OVERVIEW + FALL 2020 ROGELL SURVEY RESULTS
- 3** PLANS FOR 2021
- 4** HOW TO STAY INVOLVED
- 5** FEEDBACK AND QUESTIONS

1

BRIEF UPDATES
ON NEARBY STRATEGIC
NEIGHBORHOOD FUND
CITY PROJECTS



Location Map





Strategic Neighborhood Fund





Grand River Streetscape



Grand River's new design!



PARKING

DRIVING LANES

TURNING
LANE

DRIVING LANES

PARKING

2-WAY
BIKE
LANE

Grand River's new design includes:

- + Traffic calming for a safer retail street
- + More pedestrian crossing opportunities
- + Better transit stops
- + Clear parking

+ Drive safe!

+ Drive the speed limit.

+ Do not pass in the center/parking lane.

STREETS FOR PEOPLE

detroitmi.gov/streetsforpeople

Here are some tips to ensure everyone's safety:

As a driver,



Remember to look in all directions before exiting driveways.



Be cautious and always look for bicyclists when opening your car door.



Slow down and look for pedestrians and cyclists when turning

DO NOT PARK OR DRIVE IN THE BIKE LANE

As a cyclist,



Use both front and rear lights for extra visibility at night.



Abide by traffic laws



Yield to people getting on or off the bus

Be aware of your surroundings even while in bike lanes



Follow the arrows & keep to your side of the two-way bike lane so oncoming cyclists can pass.

As a pedestrian,



Wait for the bus on the new bus platforms.



Be sure to cross at crosswalks to ensure drivers can see you.



Look out for cyclists traveling in both directions when crossing.



Obama Building – Mixed Use Development



HOLCOMB SCHOOL

Holcomb Elementary Site





Burt Road – Permanent Supportive Housing

- **Selected Proposal – Full Circle Communities**
- **HRD / DLBA Marketed Site February 2020**



DEVELOPMENT OPPORTUNITIES

MULTI-FAMILY ORCHARD ST SITE

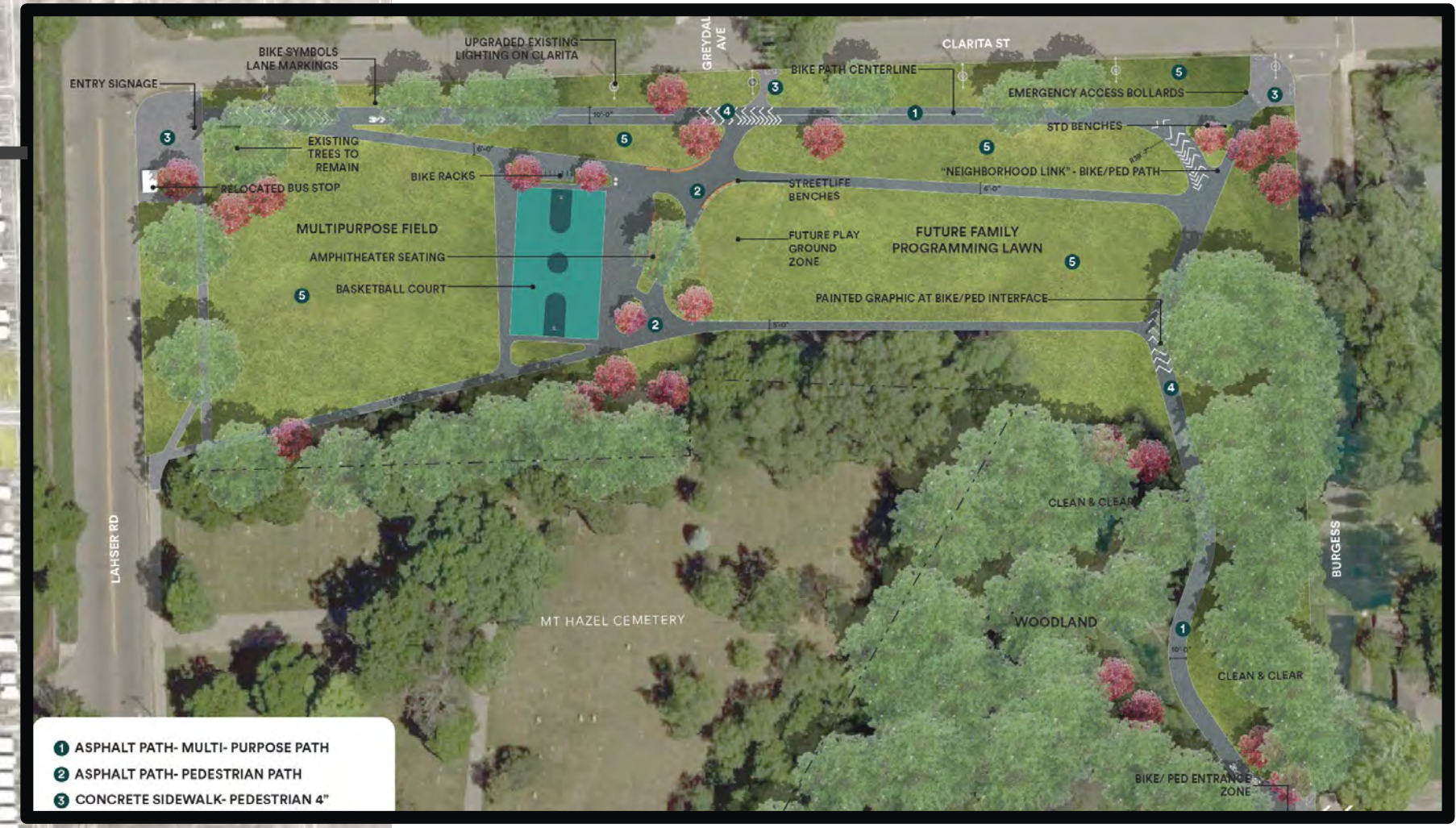


ORCHARD STREET SITE

- Request for Proposals Responses Due January 31st
- Medium Density Residential



**OLD REDFORD
NEIGHBORHOOD
LINK**



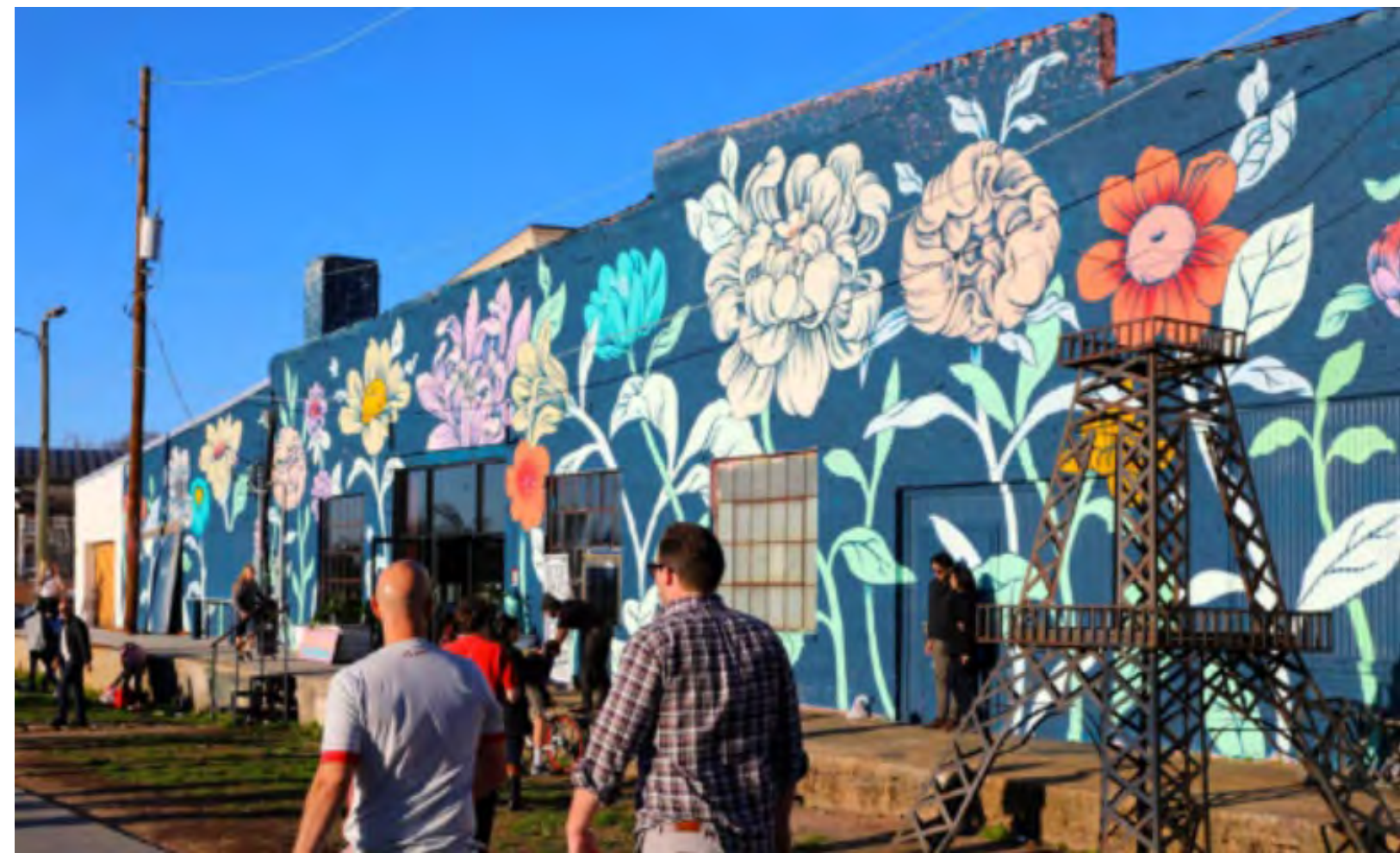
- 1 ASPHALT PATH- MULTI- PURPOSE PATH
- 2 ASPHALT PATH- PEDESTRIAN PATH
- 3 CONCRETE SIDEWALK- PEDESTRIAN 4"





CELEBRATE

CELEBRATE LOCAL ARTS
AND CULTURE



MURALS, SCULPTURE, PAVEMENT, SIDEWALK, LANDSCAPE INSTALLATION, SIGNAGE



WHAT'S YOUR VISION FOR PUBLIC ART & CULTURE PROGRAMMING IN OLD REDFORD?



Next Meeting in Early March – Stay Tuned!

<https://www.designcenterinabox.org/arts-culture-plan>

www.facebook/oldredfordlink



OLD REDFORD
NEIGHBORHOOD

QUESTIONS? CONTACT US:

313 409 8128
kesiena@sidewalkdetroit.com

SIDEWALK
DETROIT

2

ROGELL PARK PROJECT OVERVIEW





7 Mile Road

ROGELL PARK

LAHSER
CLARITA
PARK

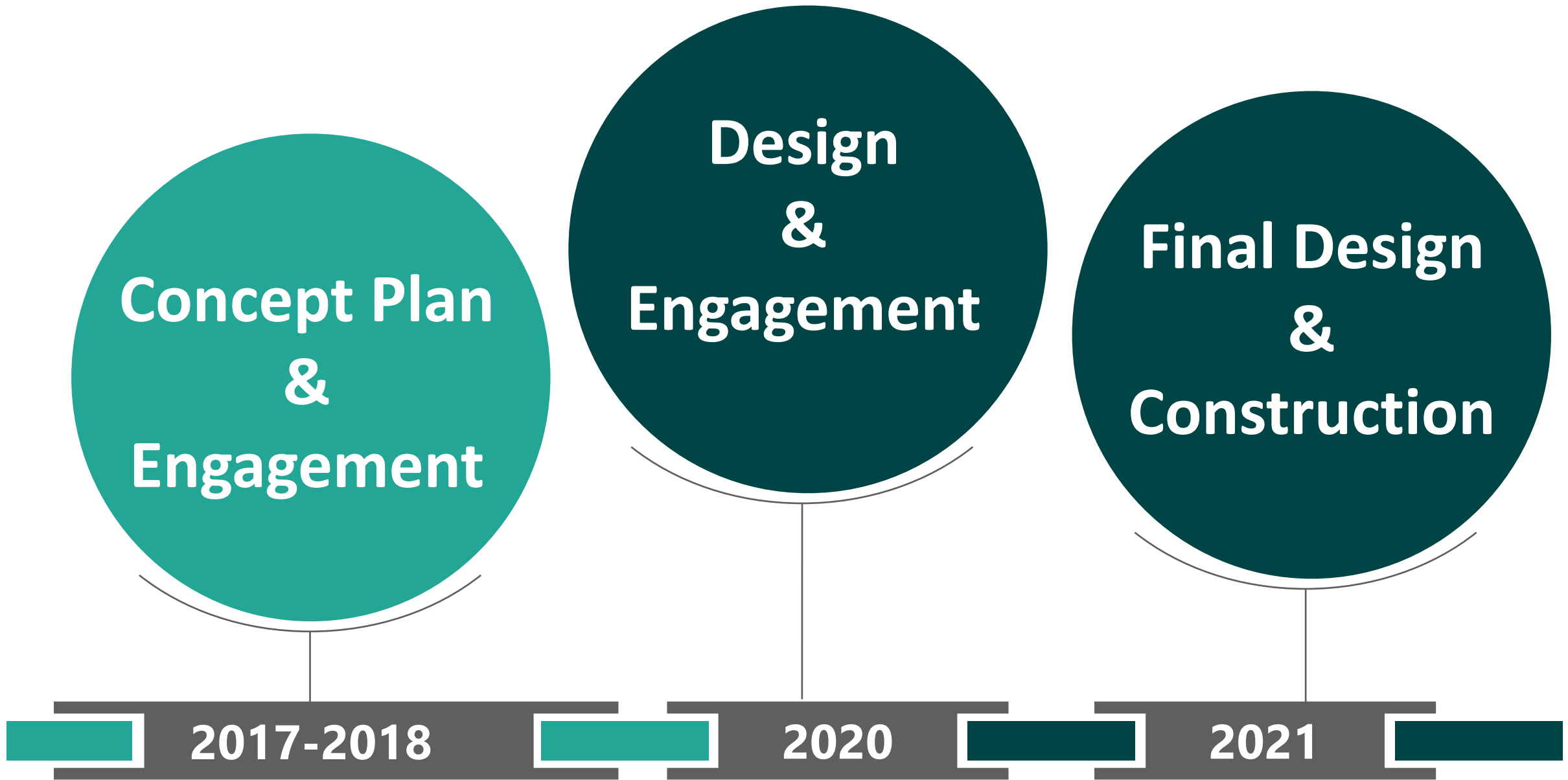
Lahser

Grand River

Berg

Google

Budget & Timeline

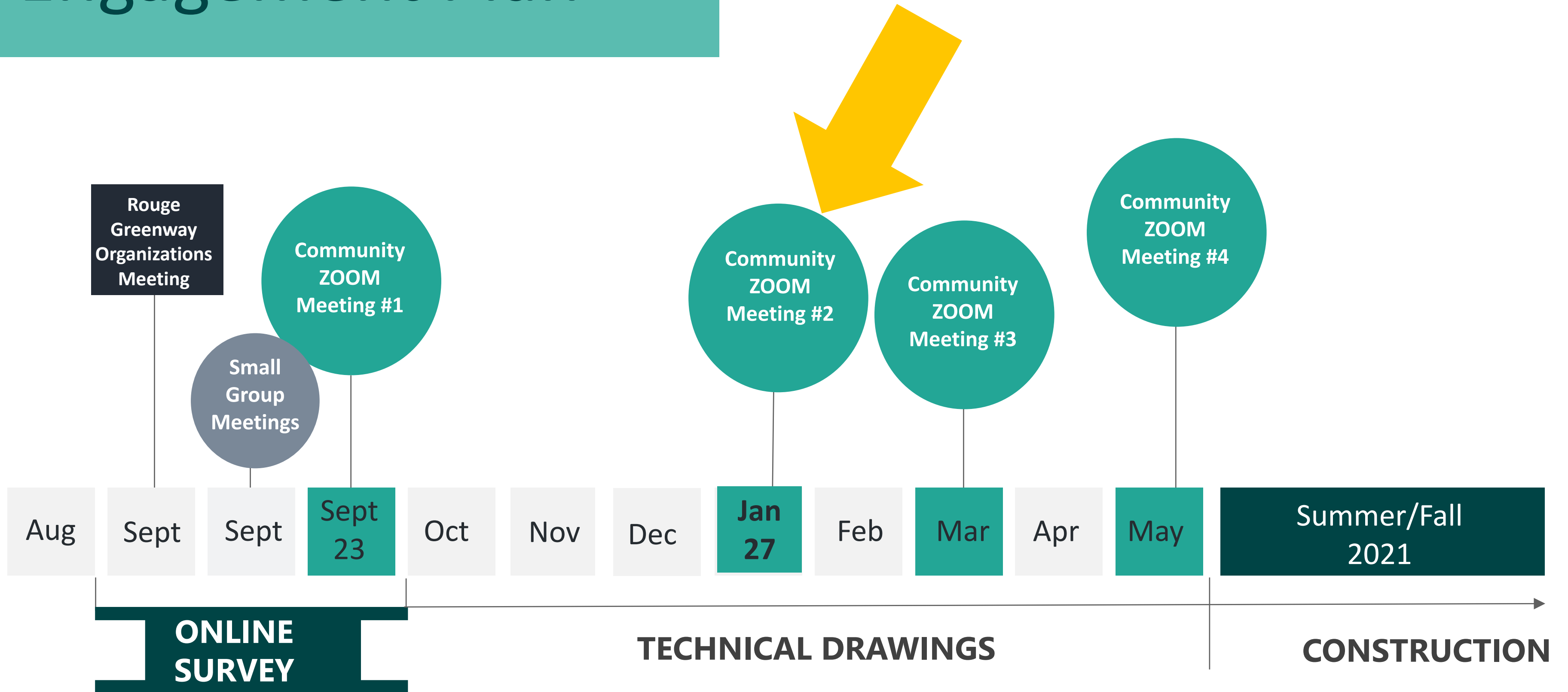


\$3.6 Million

**Strategic
Neighborhood
Fund**

Park
Implementation Project

Engagement Plan



What We've Been Working On

- Public survey and meetings in Fall 2020
- Further assessments of clubhouse
- Additional topographic survey and soil analysis
- Construction design documents



ROGELL PARK

INPUT ON THE FIRST PHASE OF ROGELL PARK

1 TAKE A SURVEY

The City has developed a short survey to gather additional input about your priorities and concerns for Rogell Park. The survey will be open until the end of September.

Go to detroitmi.gov/rogell to complete the survey. And tell your neighbors to do the same!

If you need assistance completing the survey, call 313.687.4078 and we'll have someone help you fill it out.

2 VIRTUAL COMMUNITY MEETING SEPTEMBER 23RD 6:30-8:00

Join us via Zoom or your phone to hear an update from the City and design team about Phase One plans for Rogell Park, project schedule, provide input, and ask questions. Details at detroitmi.gov/rogell.

<https://cityofdetroit.zoom.us/j/95242223810> or call into the meeting at 1-301-715-8592

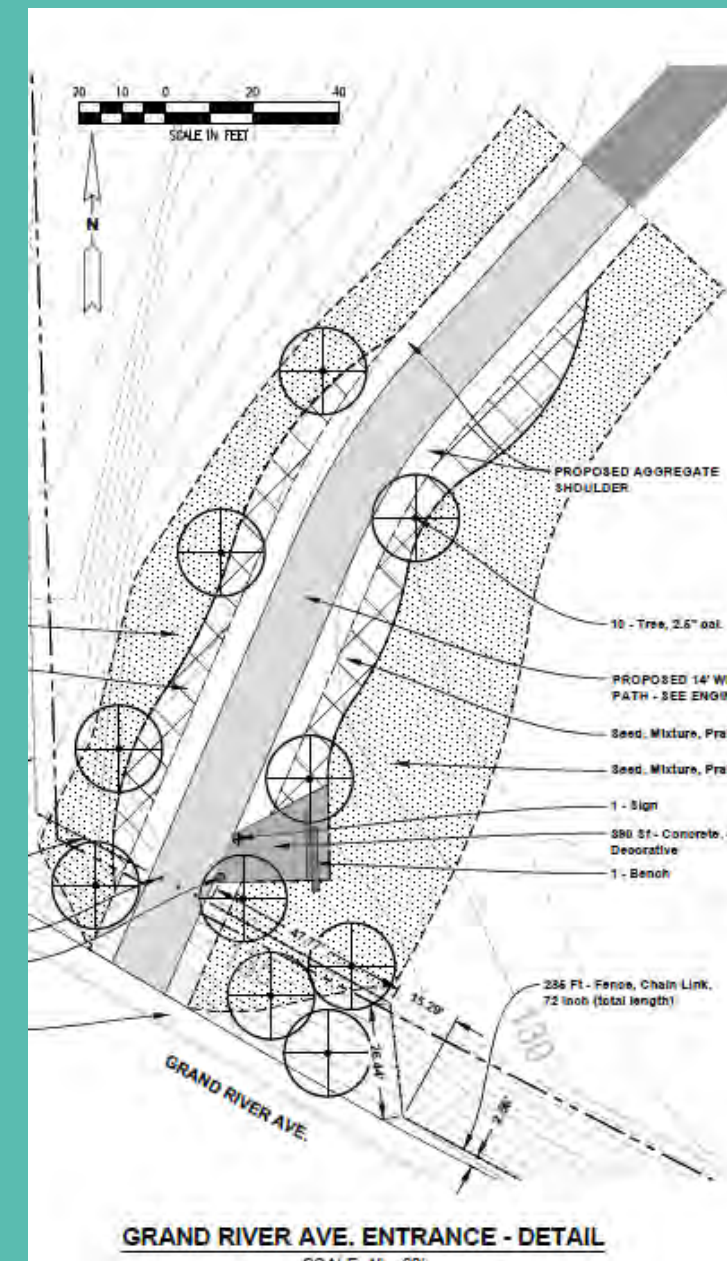
As part of the Framework Plan identified to be Park Masterplan and long-term

Phase One is g and to the par

WHAT W

- The City pur fencing imp calming on
- City hired a to discuss t masterplan
- Design team survey and opportunities
- Developed p to present t
- Completed a future decis

If you have any qu want to provide in Services Departm



portion of the fieldstone chimney and vertically oriented crack

ditions pertain to the stone chimney:

commended to be repointed where cracked. Mortar used for r have similar physical and mechanical properties as the exist nance and appearance.

ndation and cap could not be assessed. If rehabilitated, SME assessed.

dition of the chimney is recommended to be cleaned/serviced contractor.

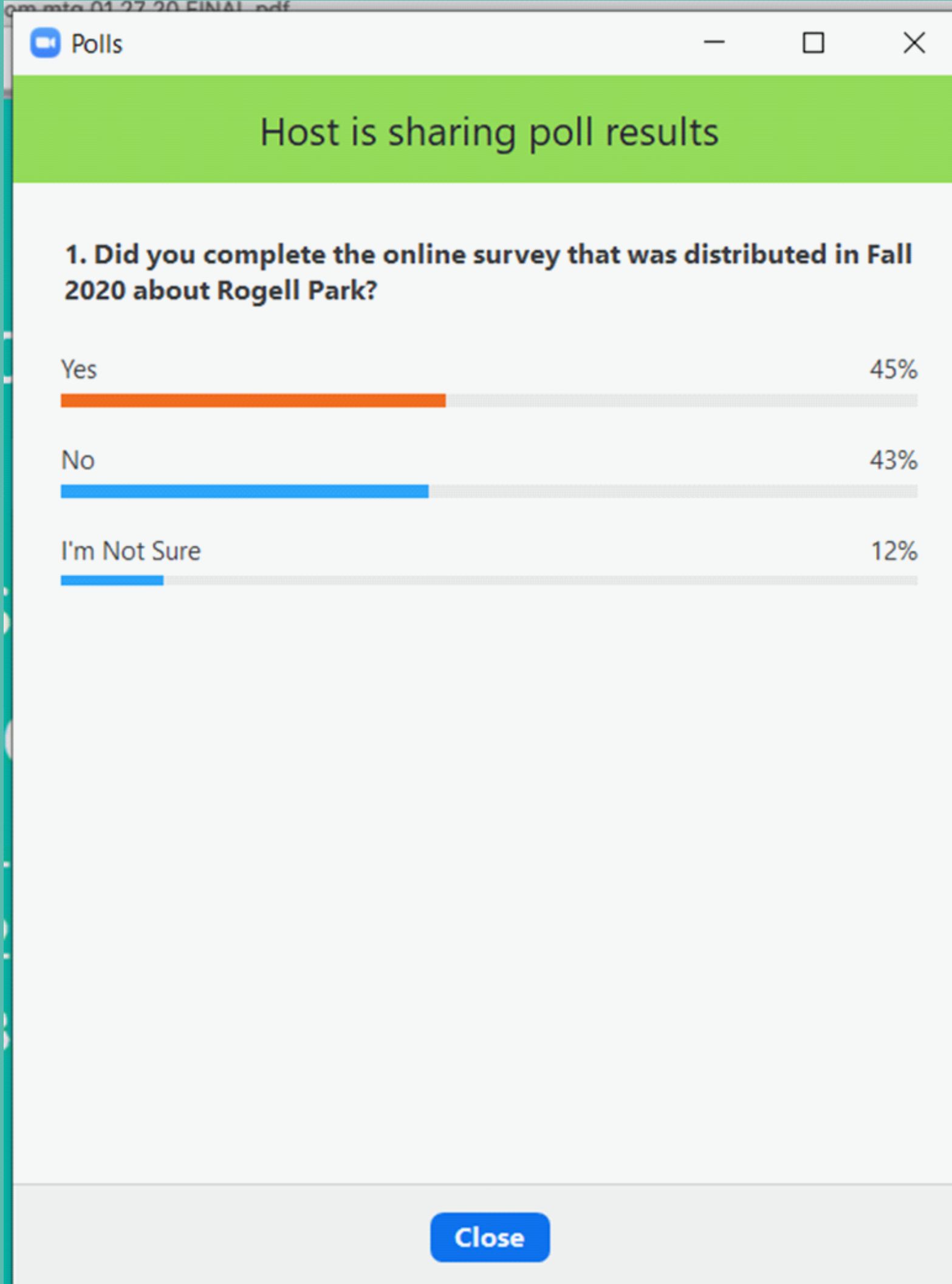
LIVE Polling Question #1



Did you complete the online survey that was distributed in Fall 2020 about Rogell Park?

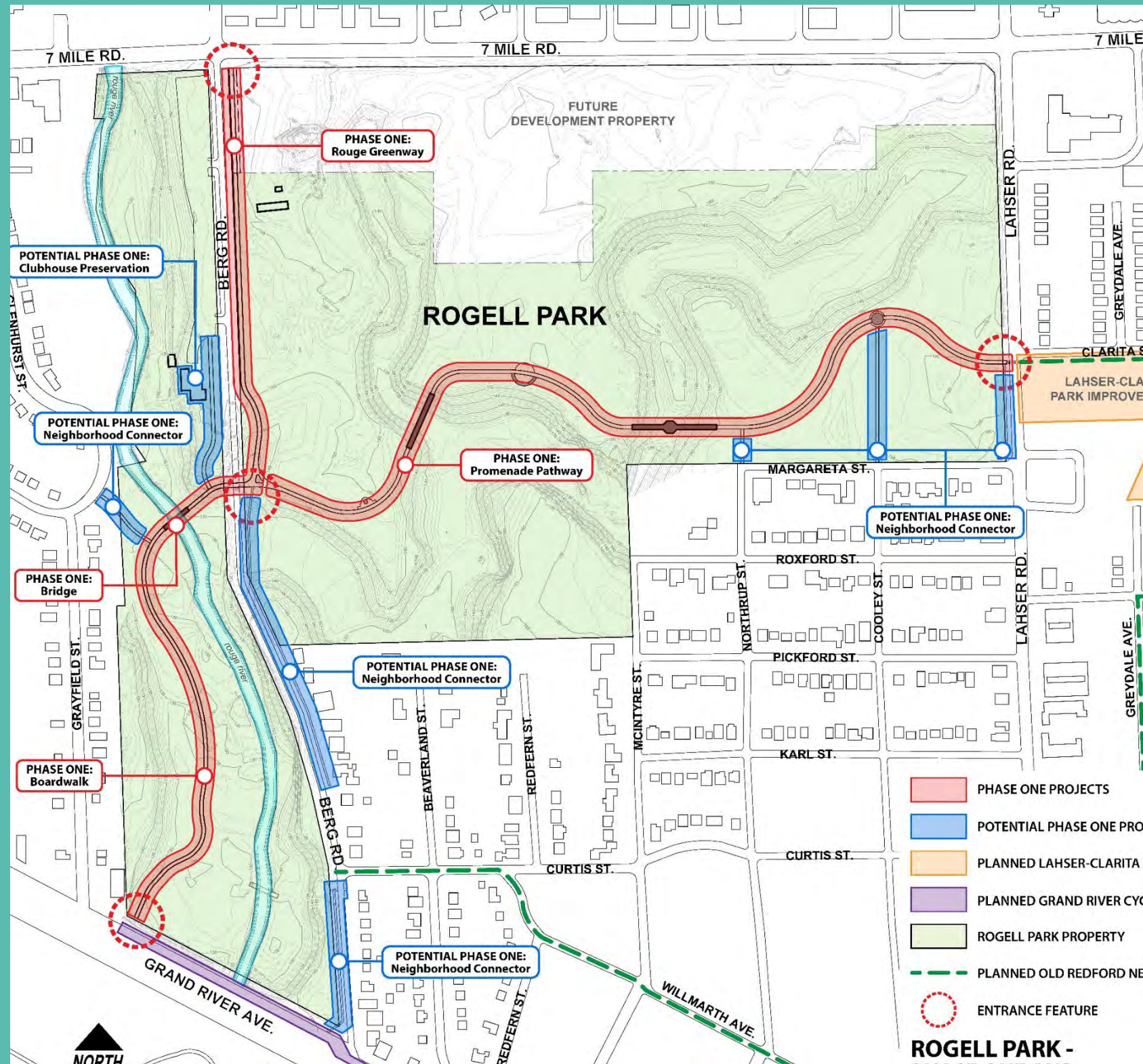
1. Yes
2. No
3. I'm Not Sure

LIVE Polling Question #1



ne
was
2020

What We Heard



84% of respondents were in agreement with the proposed Park Plan presented at the September Zoom Community Meeting and in the online survey

What We Heard



Top activities that respondents want to do at Rogell are:

- Walking/Biking (95%)
- Relaxing in Nature (76%)
- Exercising (66%)
- Habitat Viewing (61%)

What We Heard



57% of respondents said they were most likely to access the park by walking or biking



What We Heard



Top priorities for amenities at Rogell Park:

- Nature/Multi-Use Trails (70%)
- Bathrooms (36%)
- Educational/Wayfinding Signs (33%)

A Few of the Questions You Asked

- Will there be restrooms?
- Can you improve vegetation growing at edges of roads?
- Can dumping be taken care of?
- Will there be trash cans and will they be picked up?
- What about speeding traffic through the neighborhoods?
- Will it be safe?
- Will cars be parking in my neighborhood?

A Few of the Questions You Asked

- Will there be any unpaved trails?
- Will there be lighting?
- Will the clubhouse be renovated?

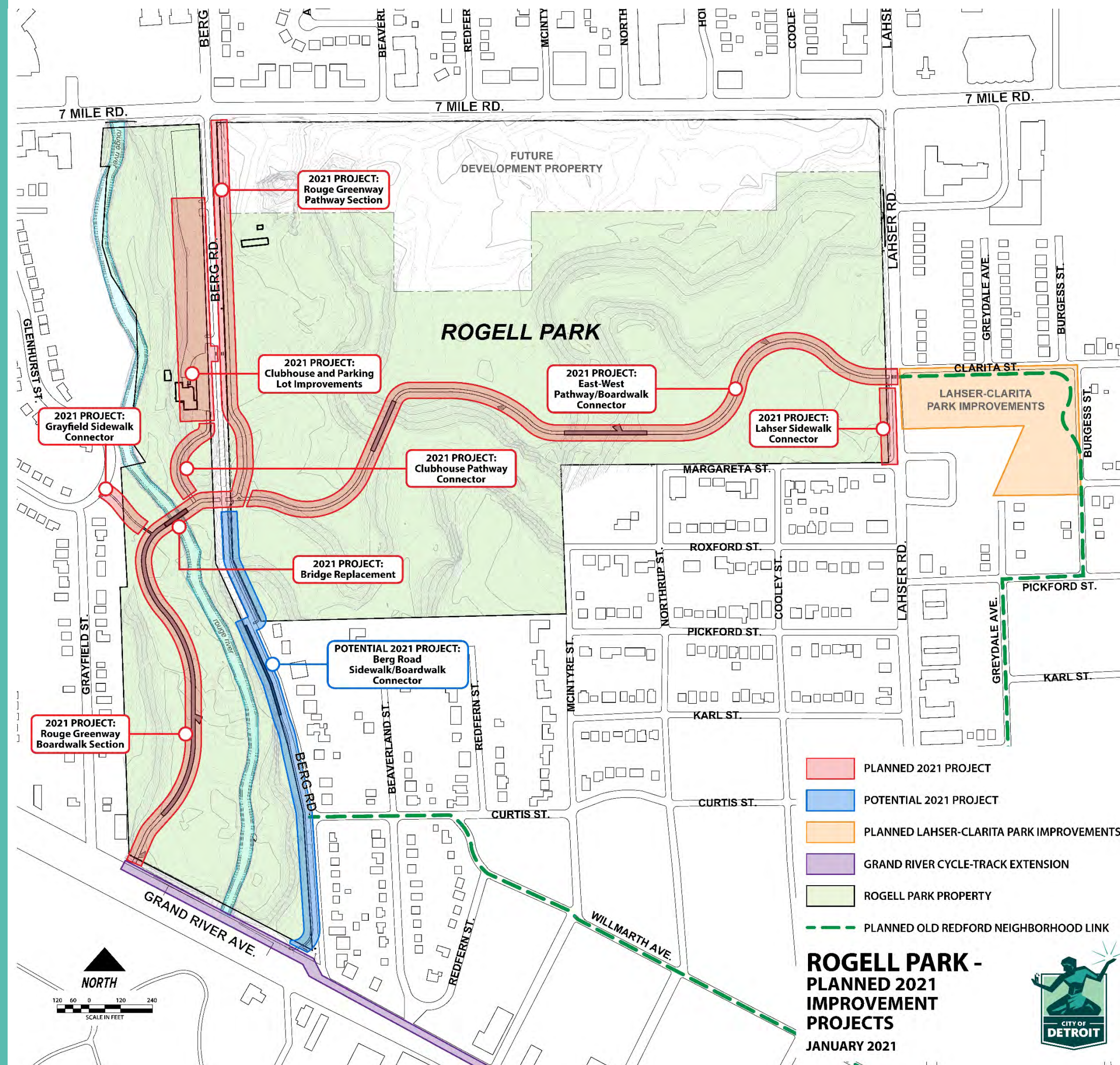
3

PLANS FOR 2021



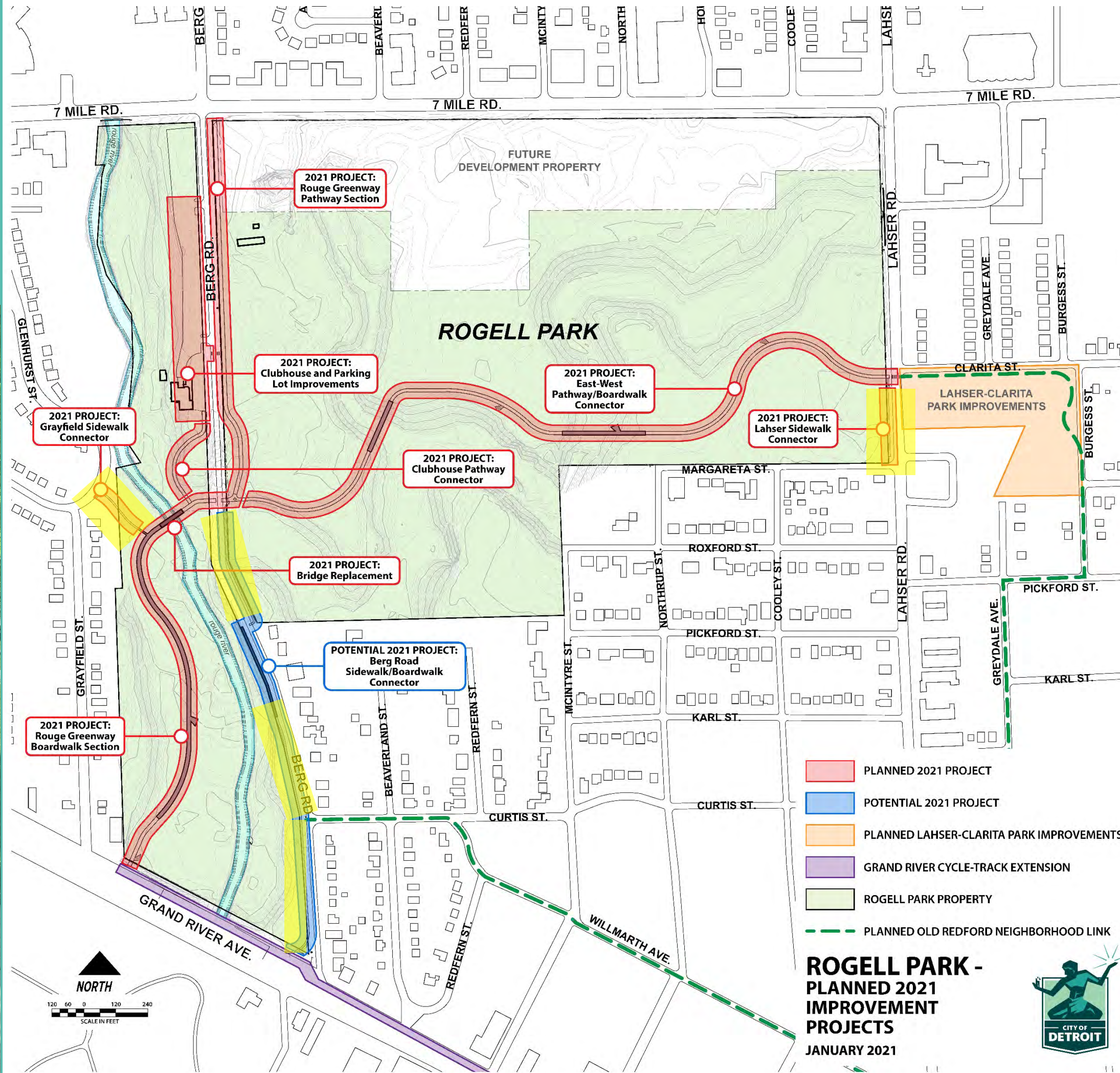
2021 Improvements

- Connecting neighborhoods into and through the park with a series of trails, bridges, and sidewalks
- Building a section of the Rouge Greenway through Rogell Park
- Vistas, overlooks, benches and signage
- Clubhouse and parking



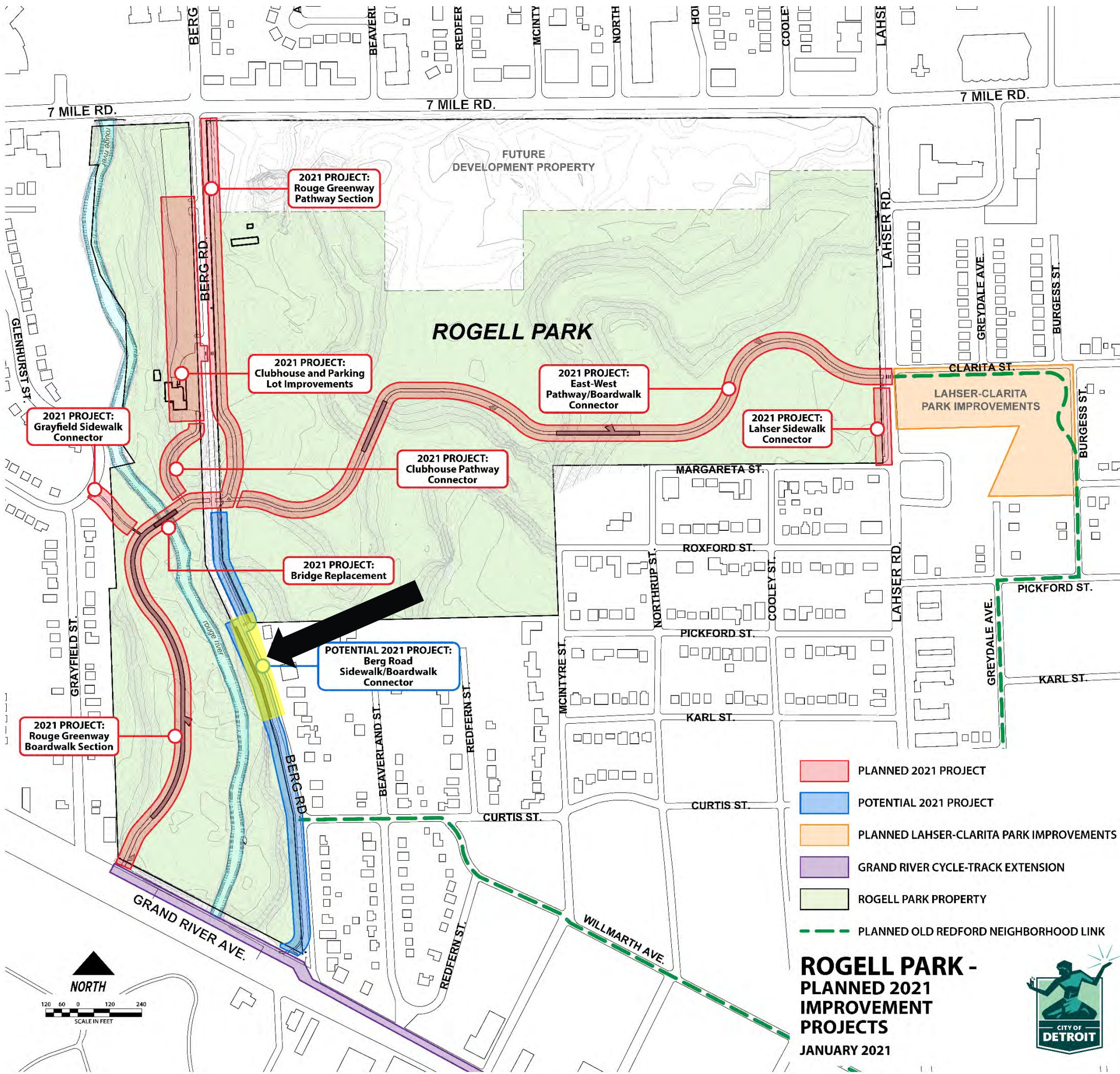
Trails and Connections

6' wide concrete



Trails and Connections

Section of 8' wide boardwalk on west side of Berg overlooking the Rouge River

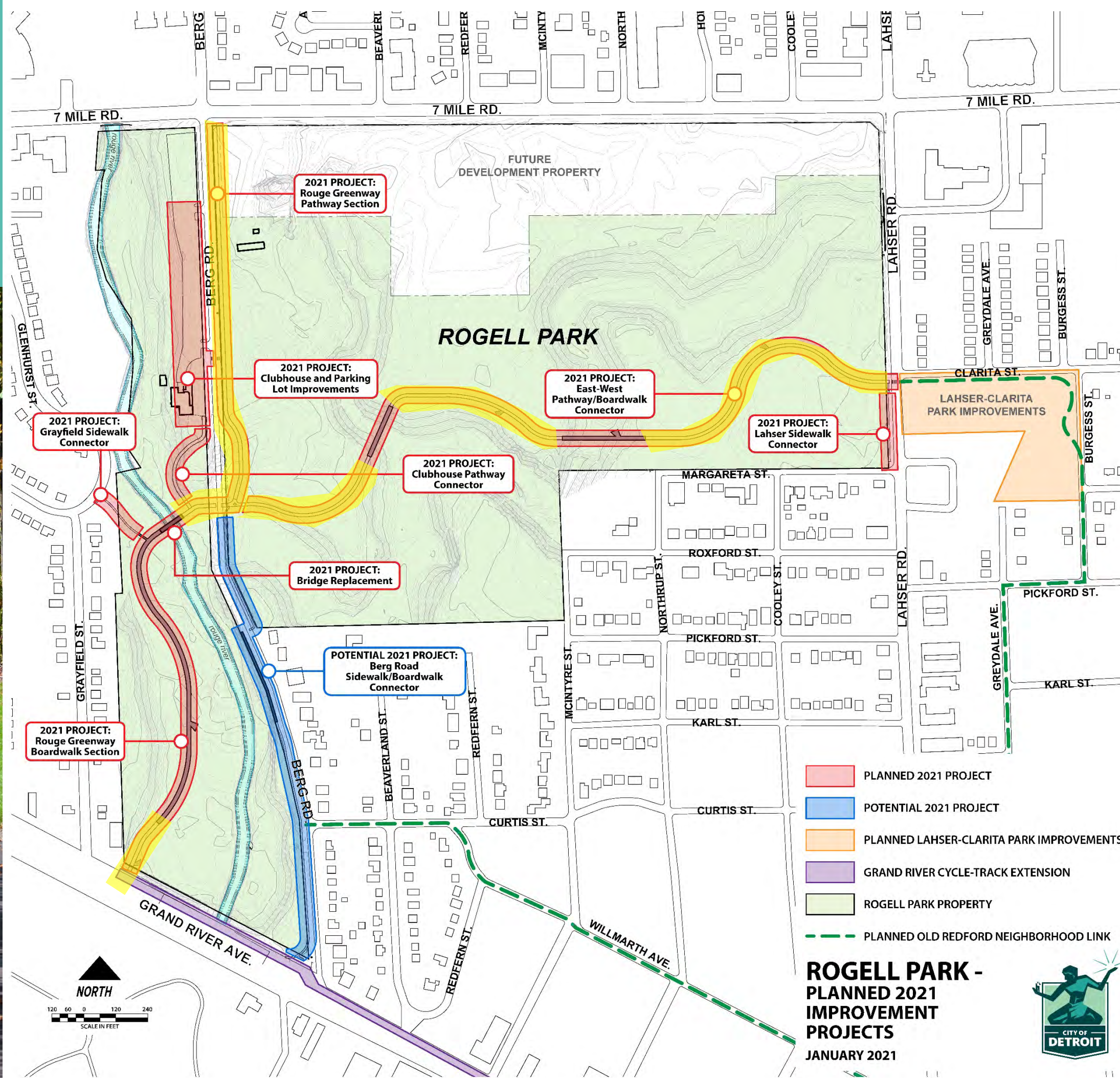


Trails and Connections

12' wide asphalt trail

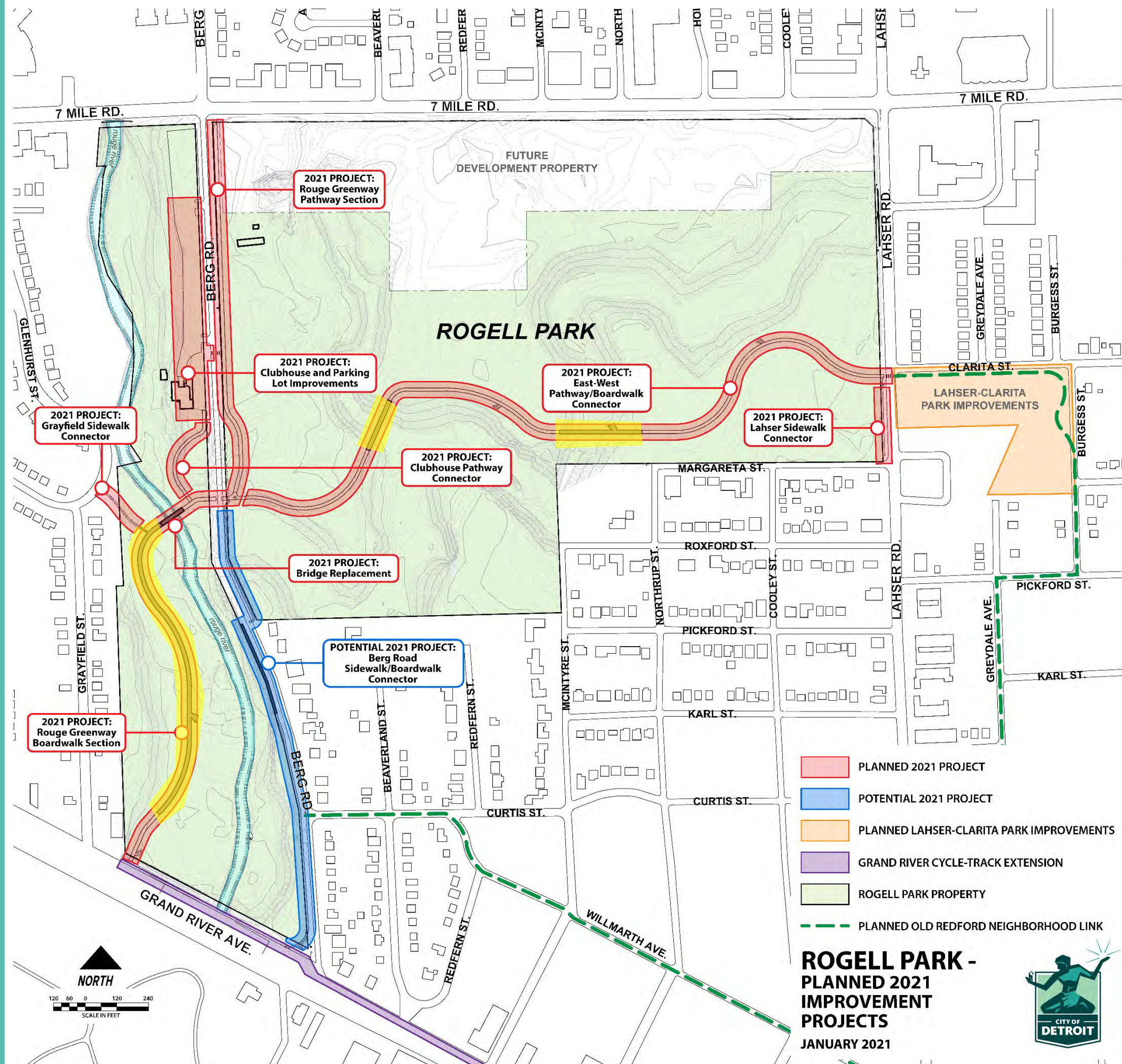


Example Image



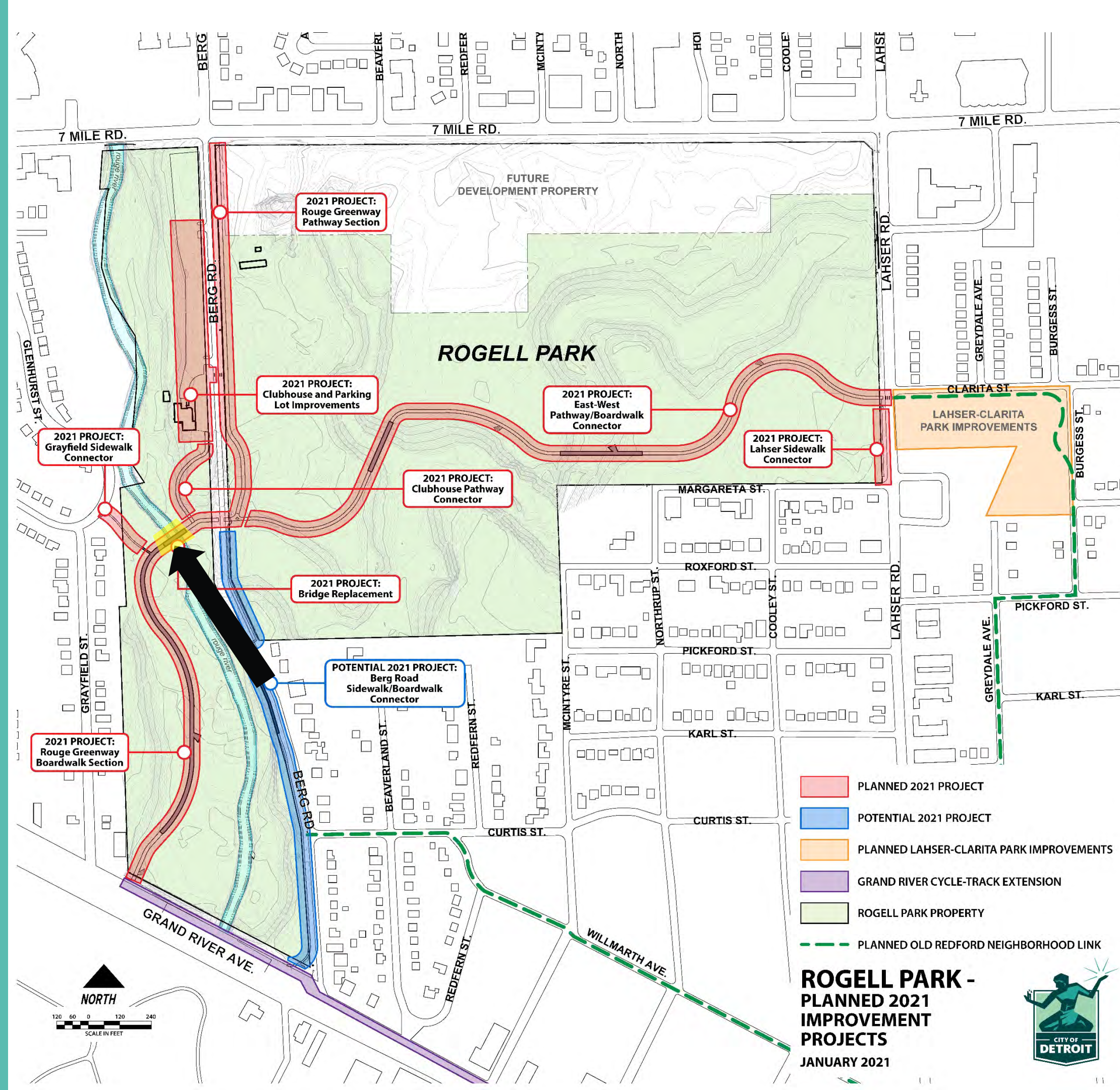
Trails and Connections

Three sections of 14' wide elevated boardwalk over/through ravines and wetlands



Trails and Connections

Bridge over Rouge River

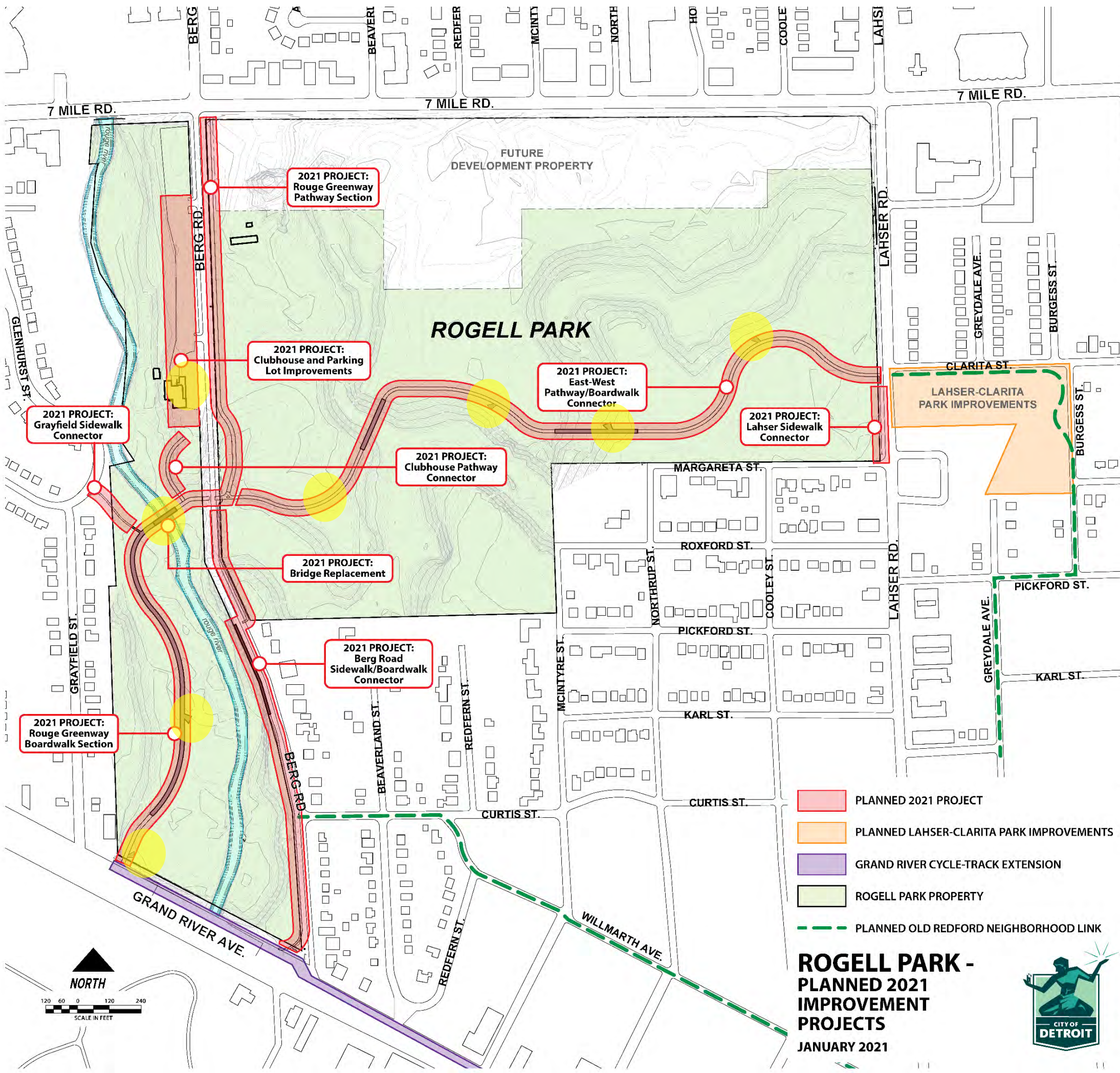


Trail Moments

- Benches
- Boulders
- Trash Cans
- Tables
- Pavilions
- Art
- Interpretive Signage

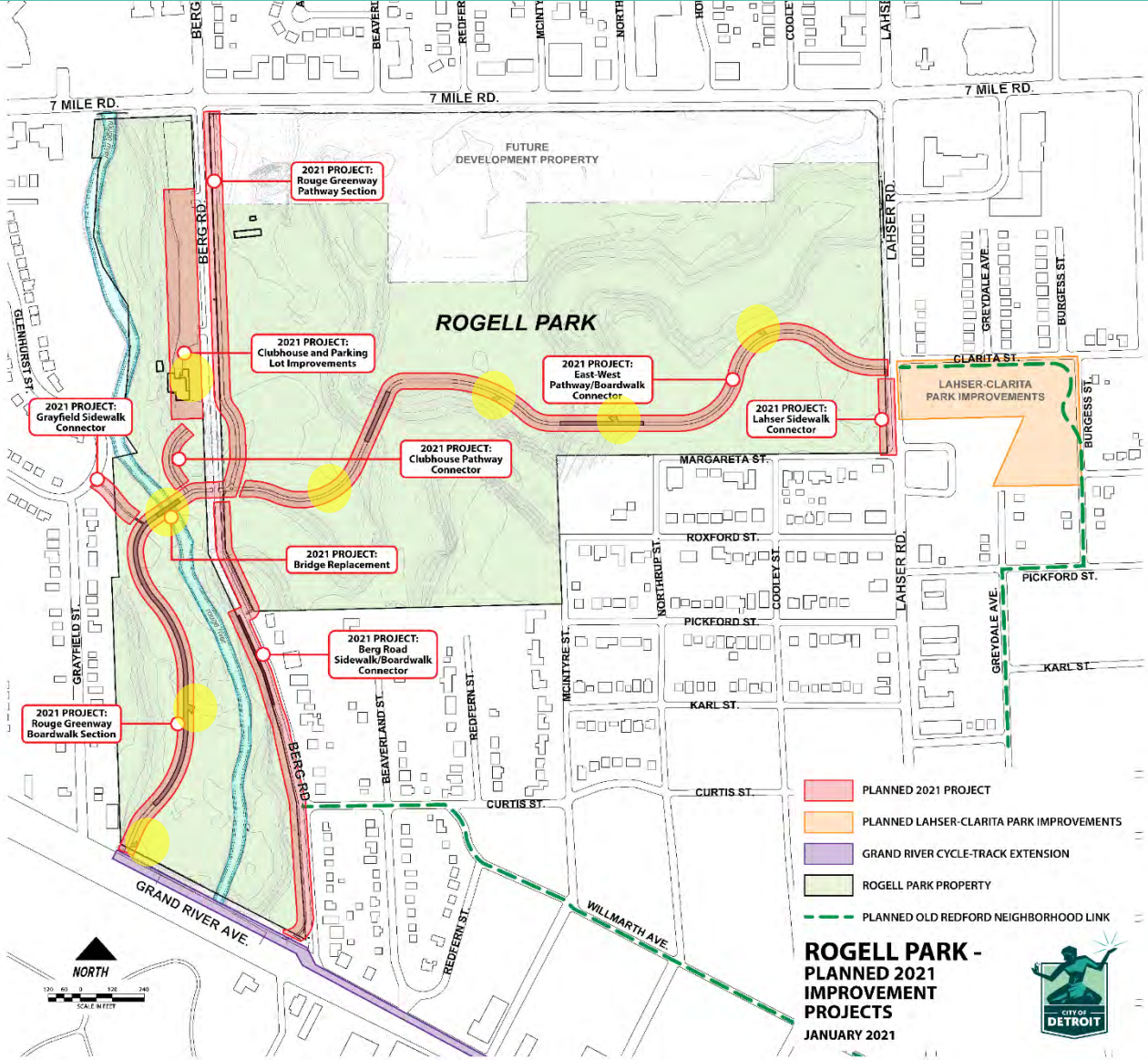


Example Image



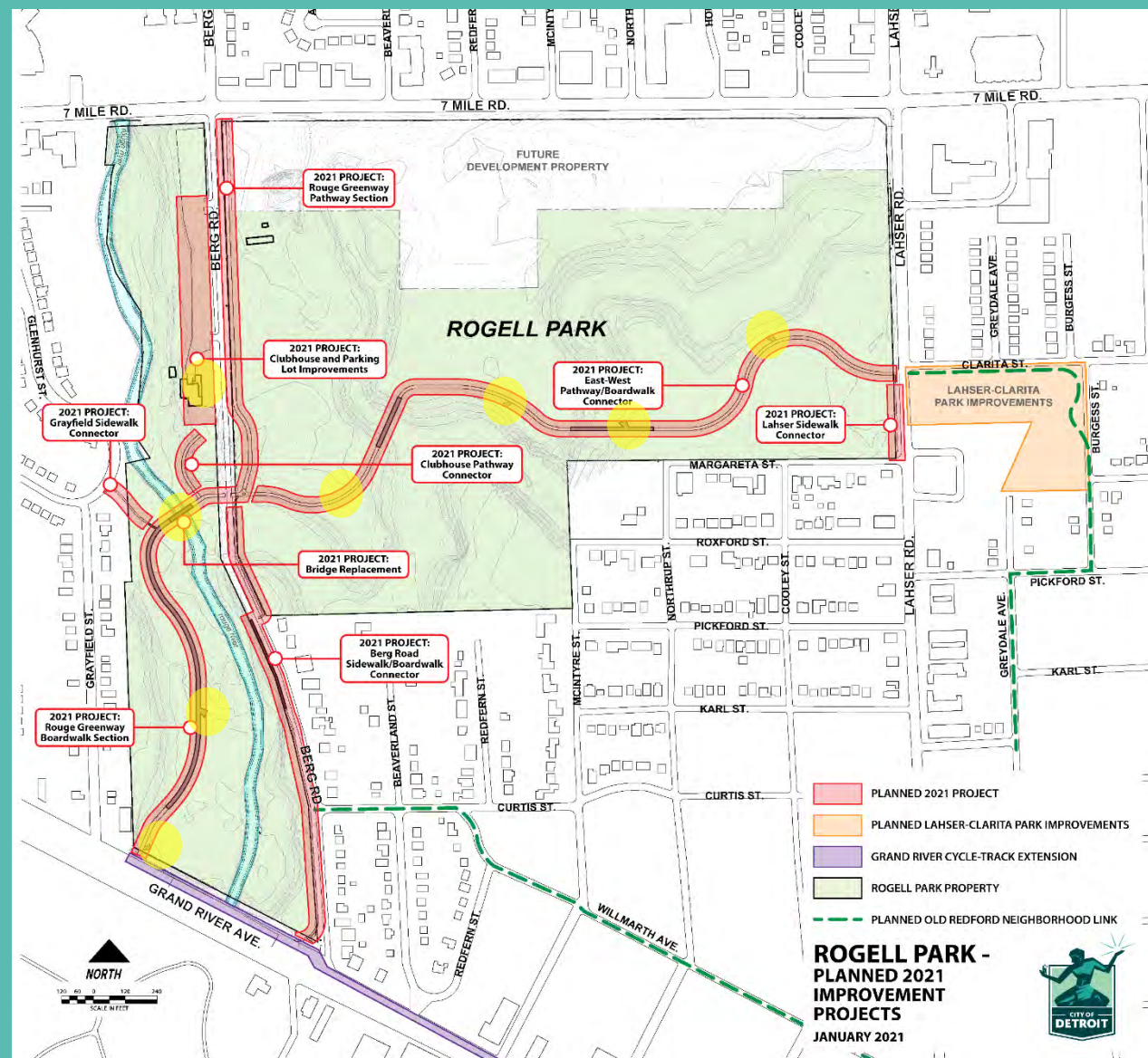
Trail Moments

- Benches
- Pavilions
- Boulders
- Art
- Trash Cans
- Educational Signage
- Tables



Trail Moments

- Benches
- Boulders
- Trash Cans
- Tables
- Pavilions
- Art
- Interpretive Signage

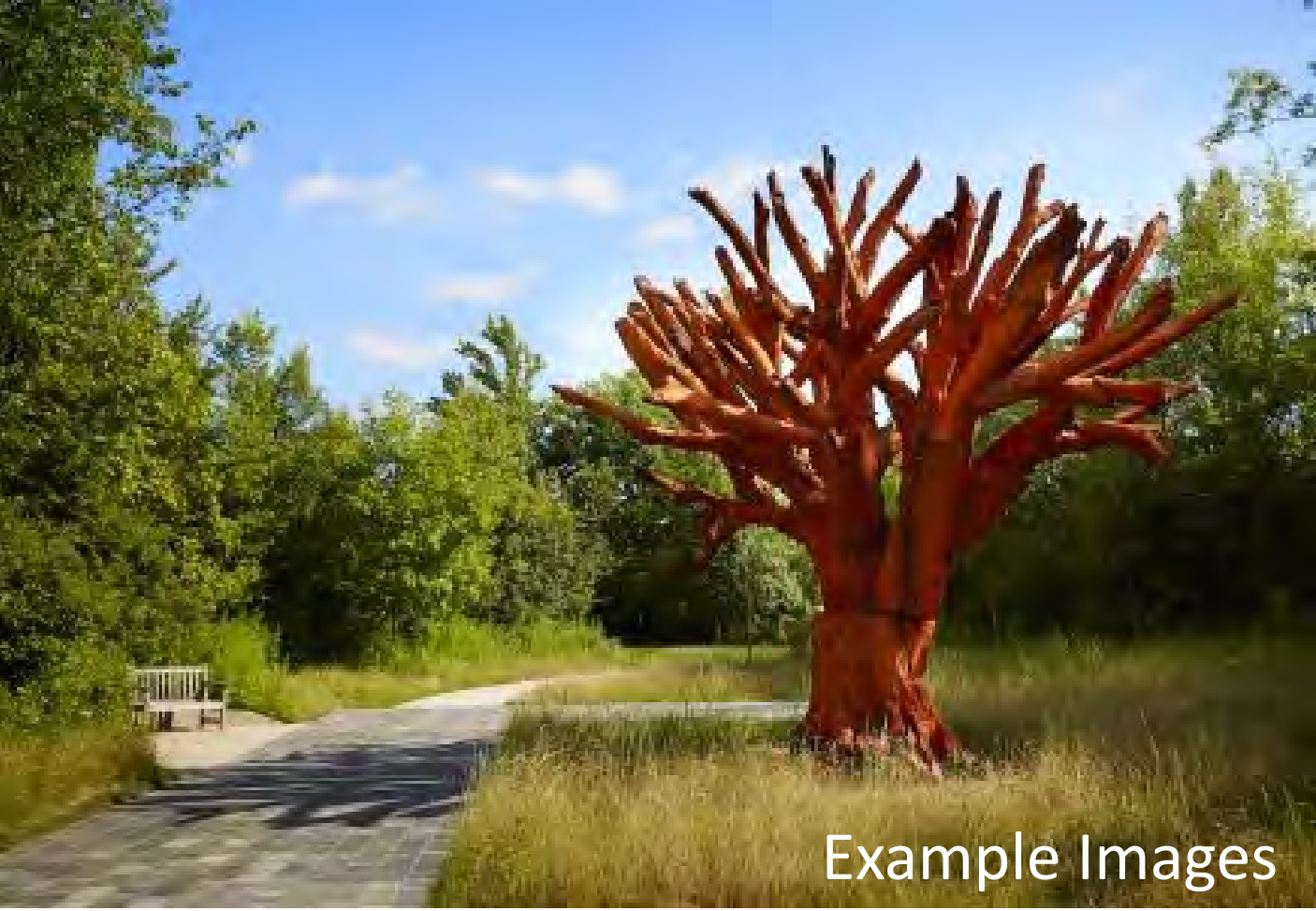
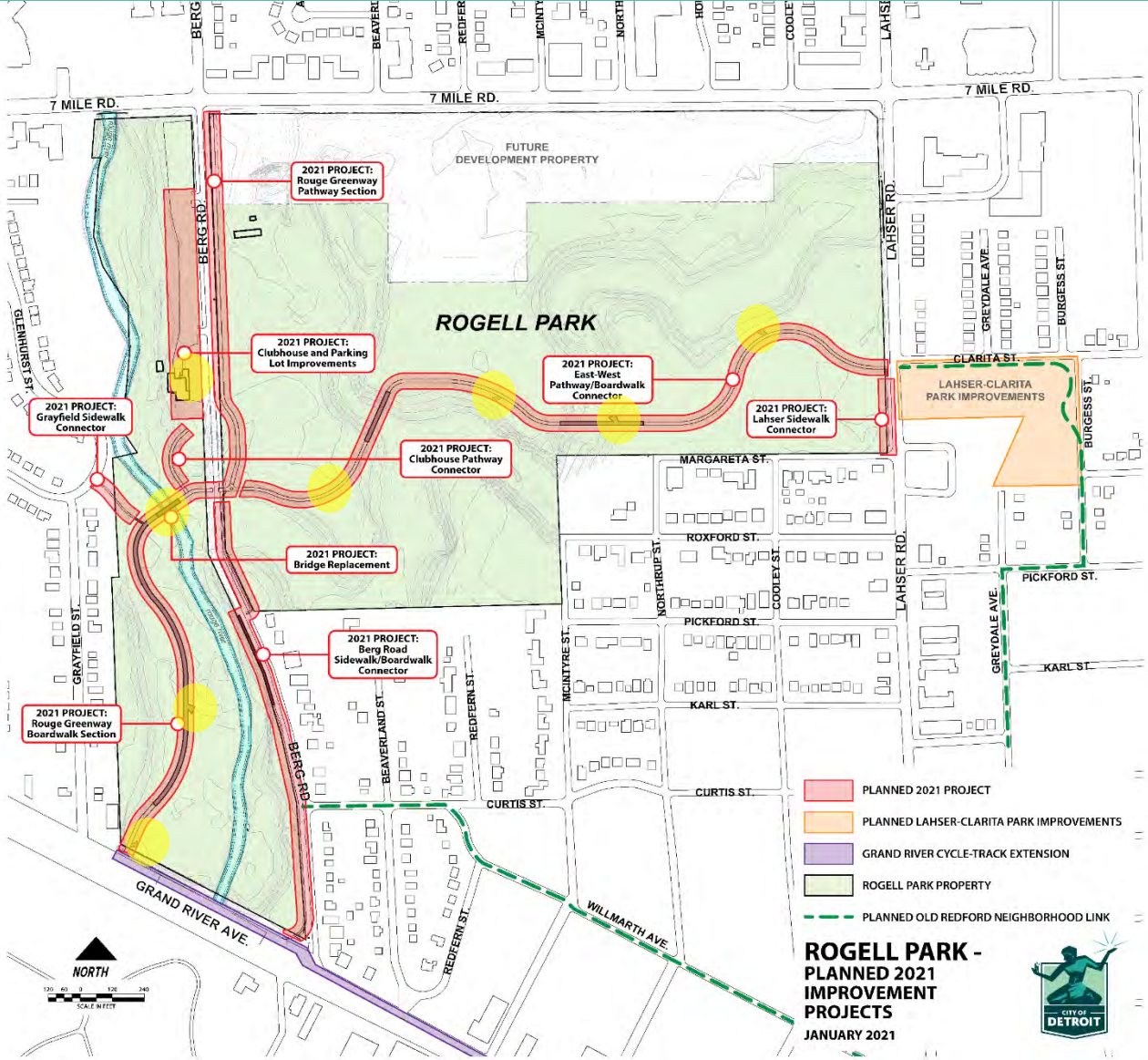


Example Images



Trail Moments

- Benches
- Boulders
- Trash Cans
- Tables
- Pavilions
- **Art**
- Interpretive Signage



Example Images



LIVE Polling Question #2



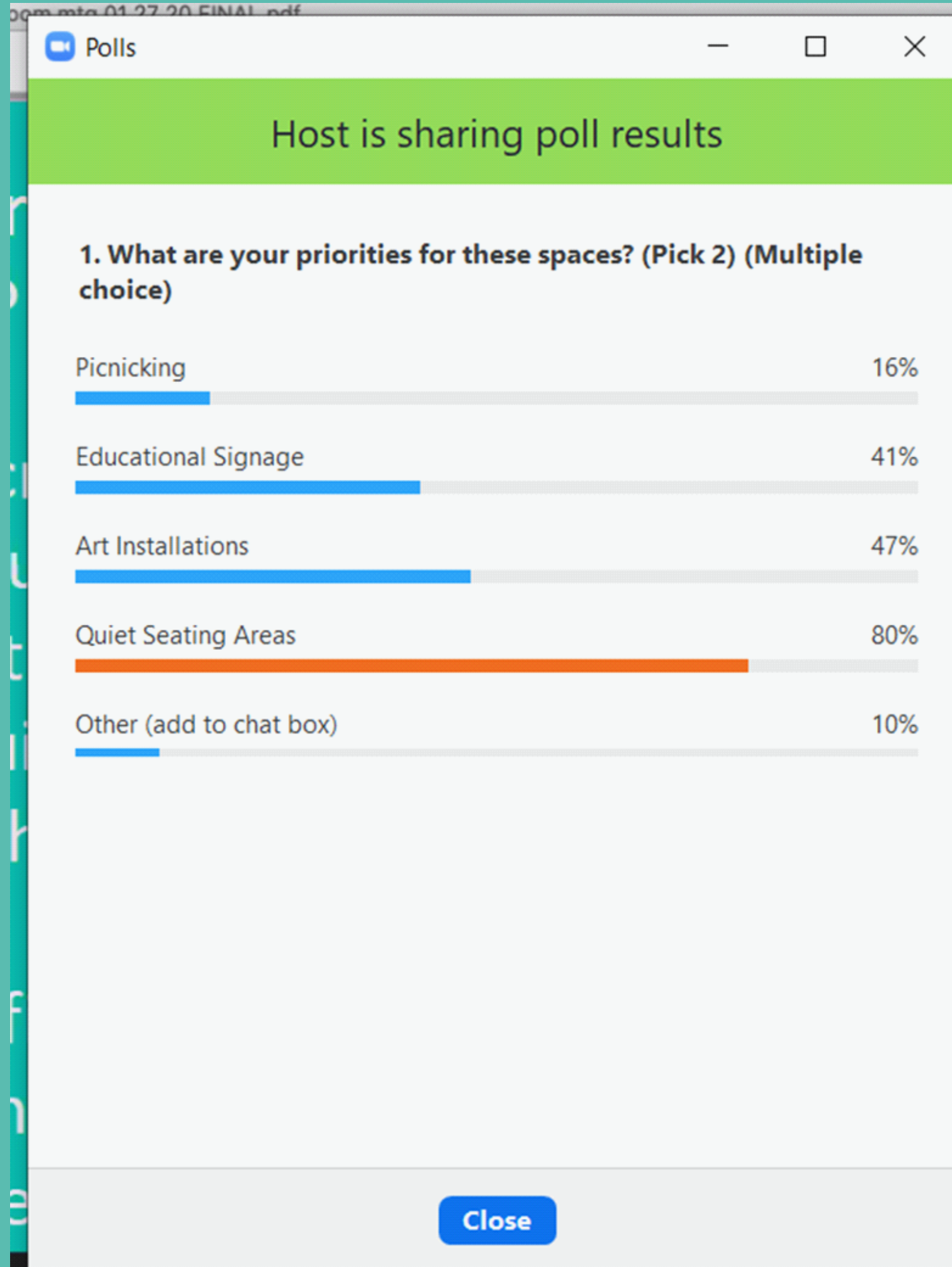
What are your priorities for these spaces? (Pick 2)

1. Picnicking
2. Educational Signage
3. Art Installations
4. Quiet Seating Areas
5. Other (add to chat box)

Specific concerns, questions or comments?

Please type in the chat box

LIVE Polling Question #2



or these

is or

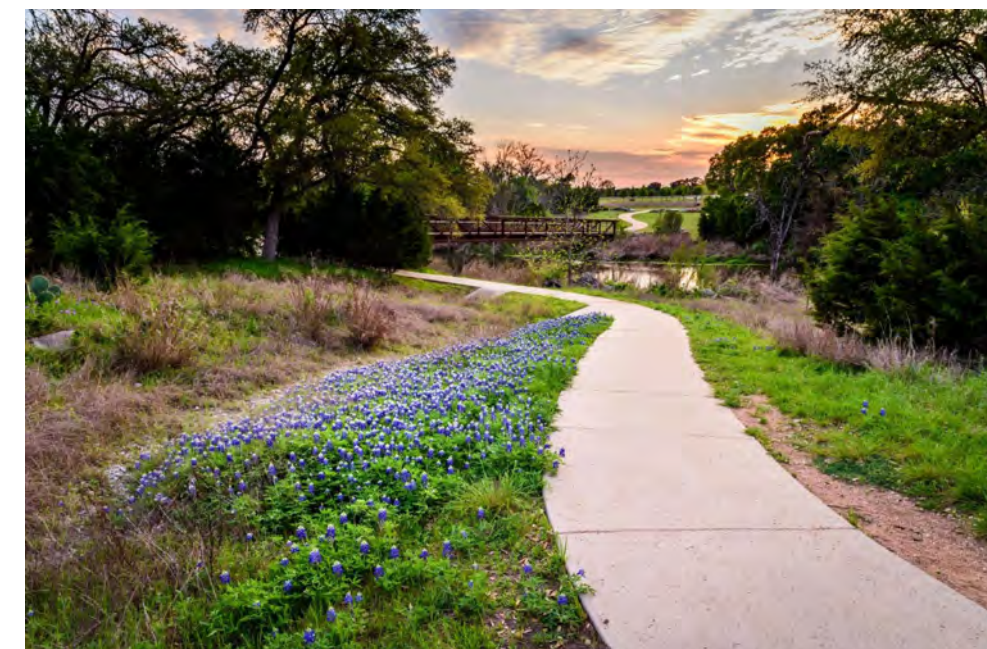
2021 Improvements

- **Trail, Boardwalks and Bridges**
- Clubhouse Area
- Fencing, Boulders and Bollards
- Vegetation Management
- Trees and Plantings
- Park Entrances

Lighting



Example Images



2021 Improvements

- Trail, Boardwalks and Bridges
- **Clubhouse Area**
- Fencing, Boulders and Bollards
- Vegetation Management
- Trees and Plantings
- Park Entrances
- Lighting



Focused work in 2021:

- Clean up in and around
- Secure the building
- Improve porch
- Add porch lighting
- Portable Restrooms



2021 Improvements

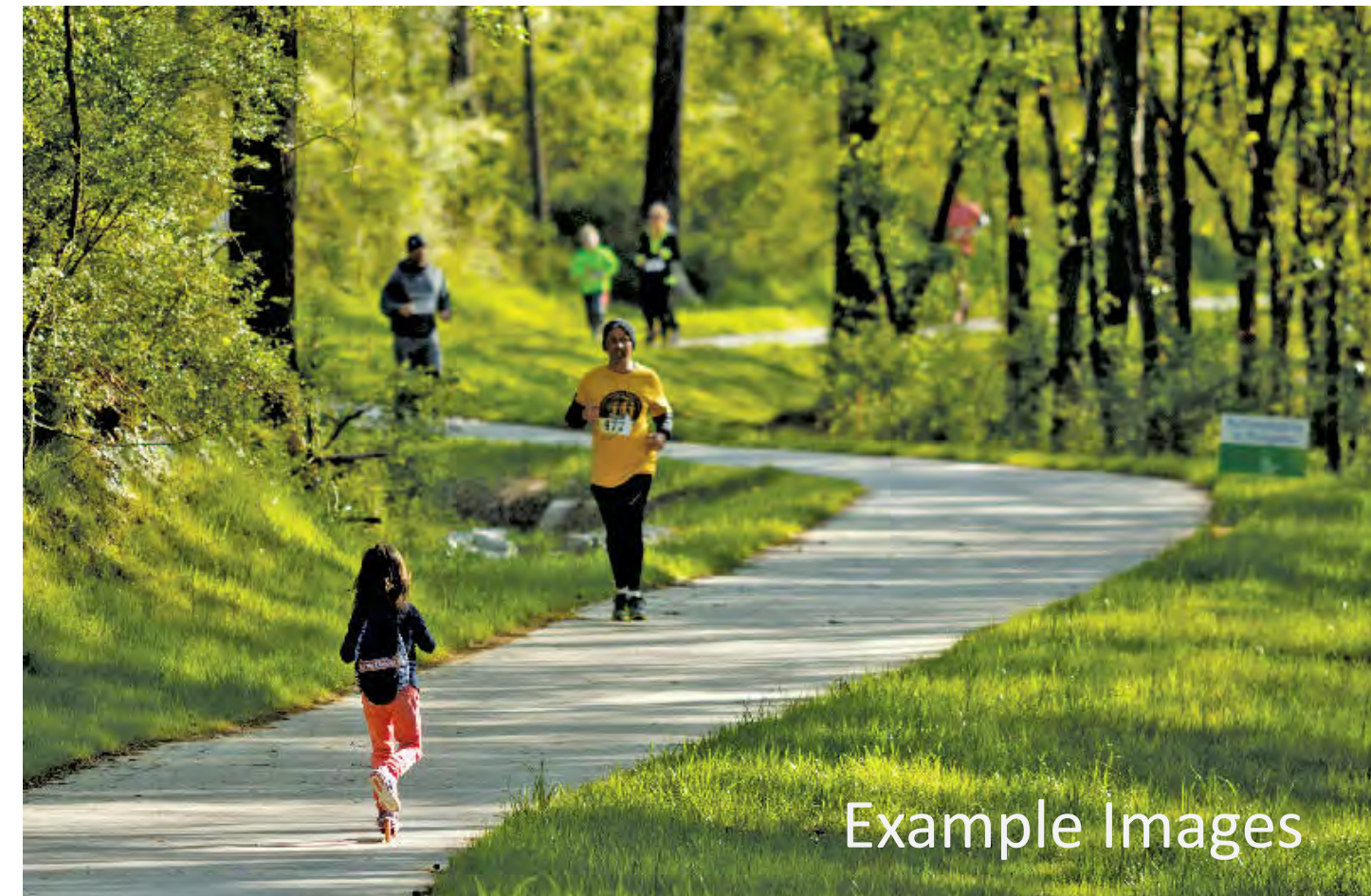
- Trail, Boardwalks and Bridges
- Clubhouse Area
- **Fencing, Boulders and Bollards**
- Vegetation Management
- Trees and Plantings
- Park Entrances
- Lighting



Example Images

2021 Improvements

- Trail, Boardwalks and Bridges
- Clubhouse Area
- Fencing, Boulders and Bollards
- **Vegetation Management**
- Trees and Plantings
- Park Entrances
- Lighting



Example Images

2021 Improvements

- Trail, Boardwalks and Bridges
- Clubhouse Area
- Fencing, Boulders and Bollards
- Vegetation Management
- **Trees and Plantings**
- Park Entrances
- Lighting



2021

Improvements

- Trail, Boardwalks and Bridges
- Clubhouse Area
- Fencing, Boulders and Bollards
- Vegetation Management
- Trees and Plantings
- **Park Entrances**
- Lighting



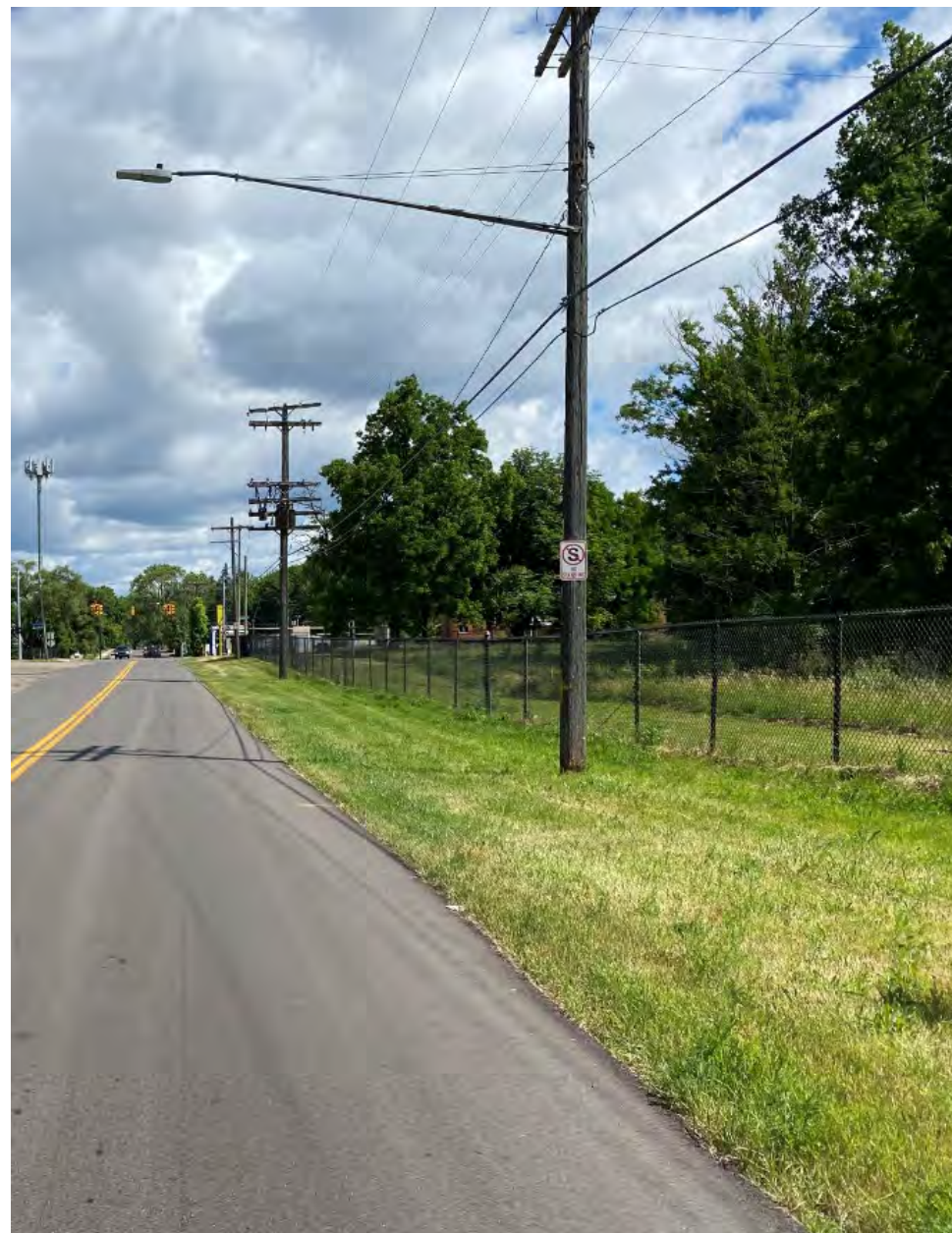
Trail Entrances



Example Images

2021 Improvements

- Trail, Boardwalks and Bridges
- Clubhouse Area
- Fencing, Boulders and Bollards
- Vegetation Management
- Trees and Plantings
- Park Entrances
- **Lighting**



Focused work in 2021:

- Clubhouse porch lighting
- Relamp parking lot light poles
- Study along Berg Rd

Outdoor Opportunities



Additional Outdoor Opportunities



LIVE Polling Question #3



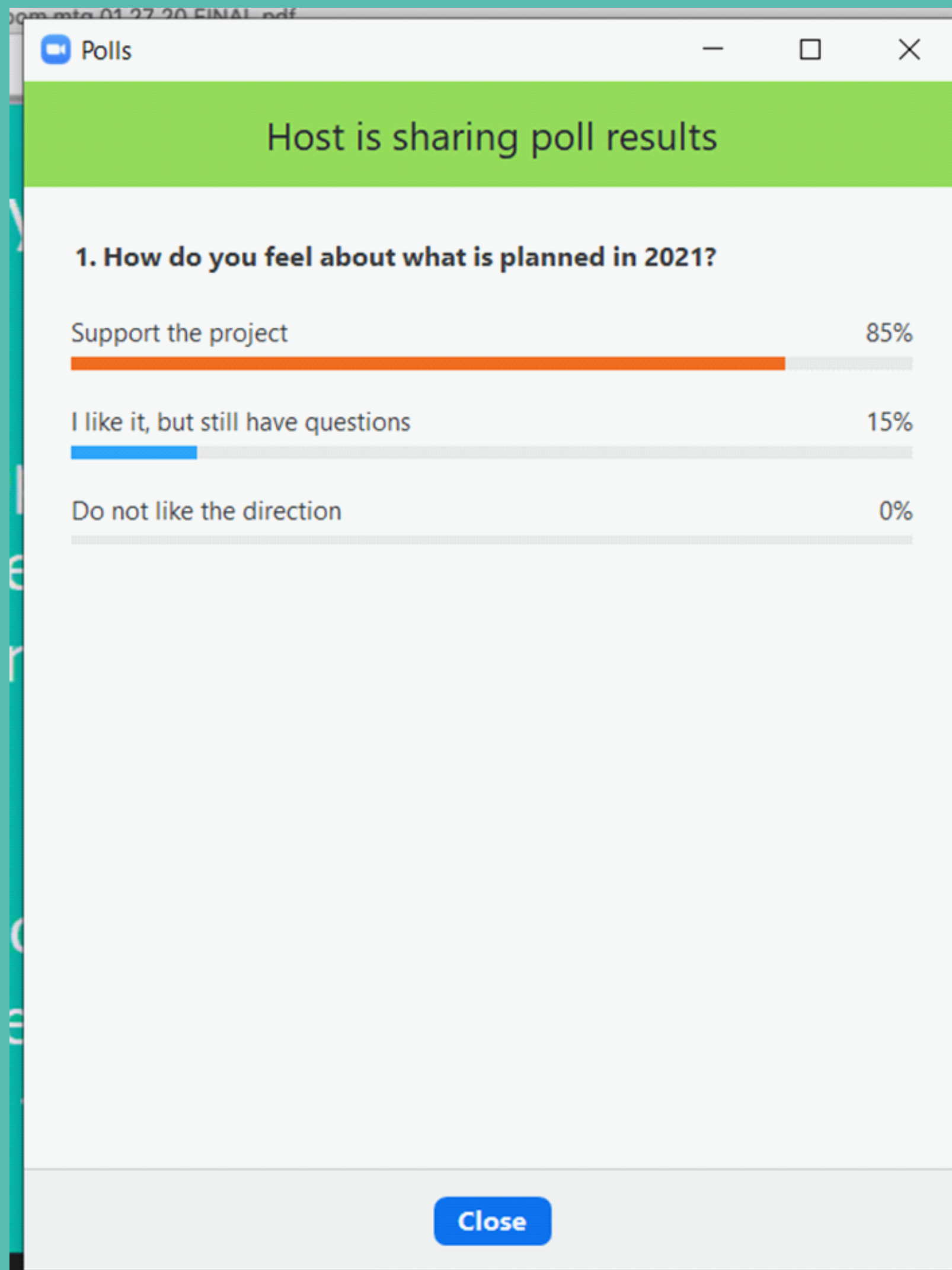
How do you feel about what is planned in 2021?

1. Support the project
2. I like it, but still have questions
3. Do not like the direction

Specific concerns, questions or comments?

Please type in the chat box

LIVE Polling Question #3



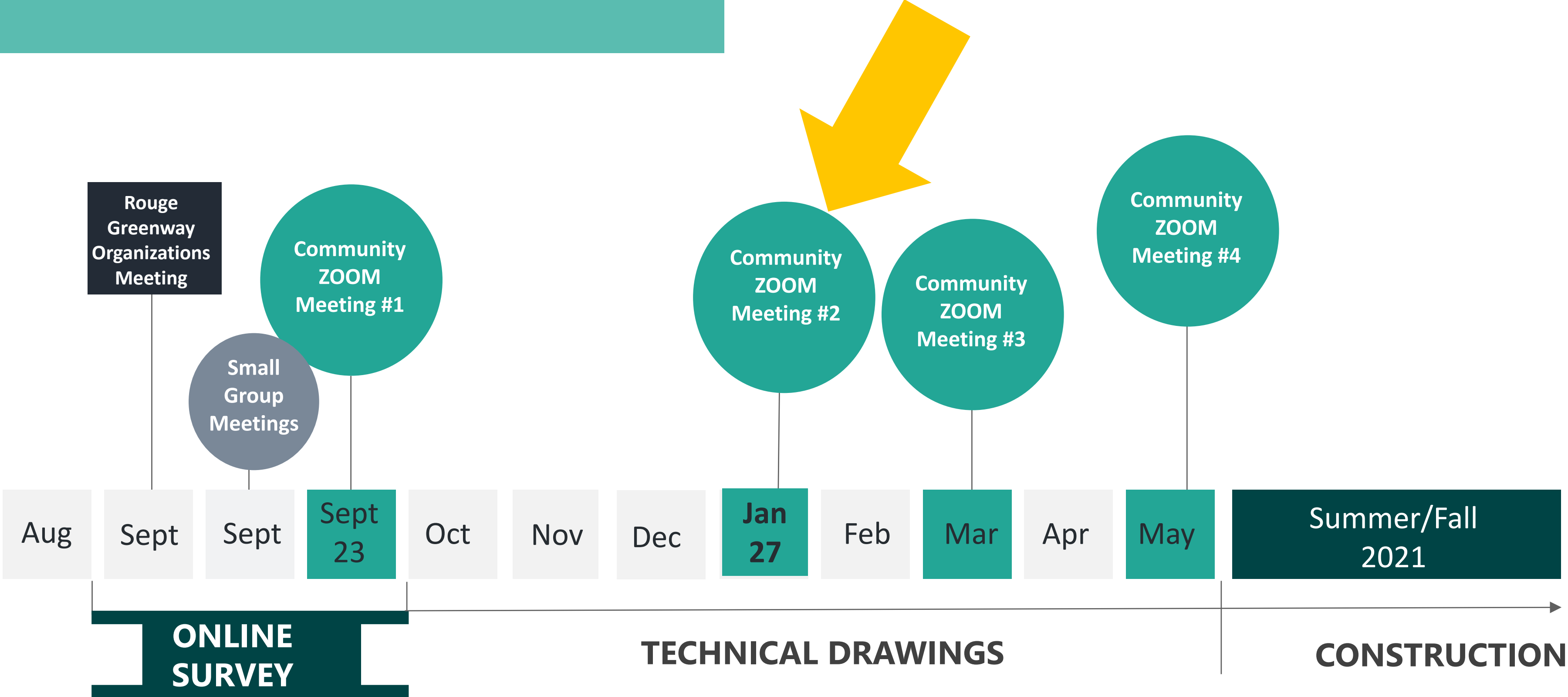
what is

questions
ion

ions or

DOX

Timeline Reminder



4

HOW TO STAY INVOLVED



Stay Updated



Project Hotline: 313.687.4078



Email: chaudhryf@detroitmi.gov



Website: detroitmi.gov/rogell



5

SHARE YOUR FEEDBACK AND QUESTIONS



CLICK ON 'RAISE HAND' SYMBOL in PARTICIPANTS BOX
OR Type in the ZOOM WEBINAR CHAT BOX



PRESS *9 TO RAISE YOUR HAND

