

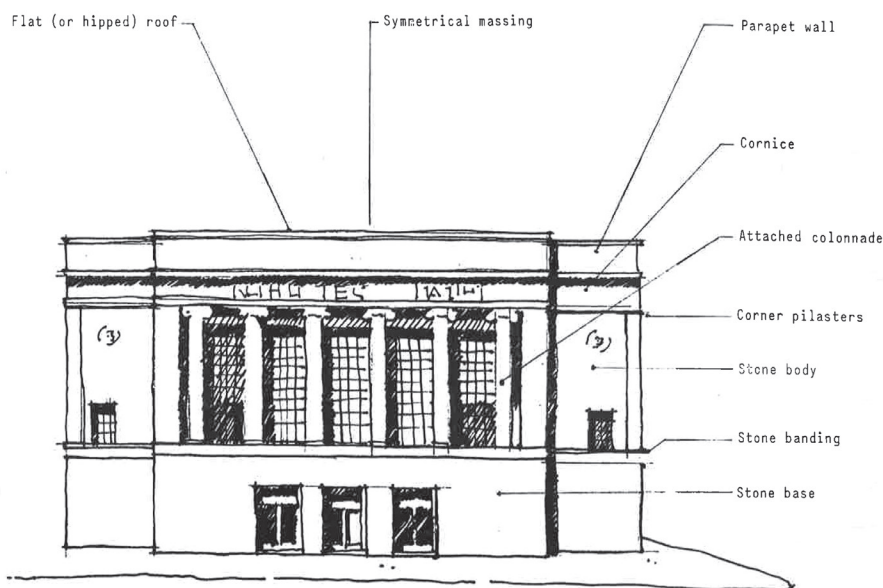
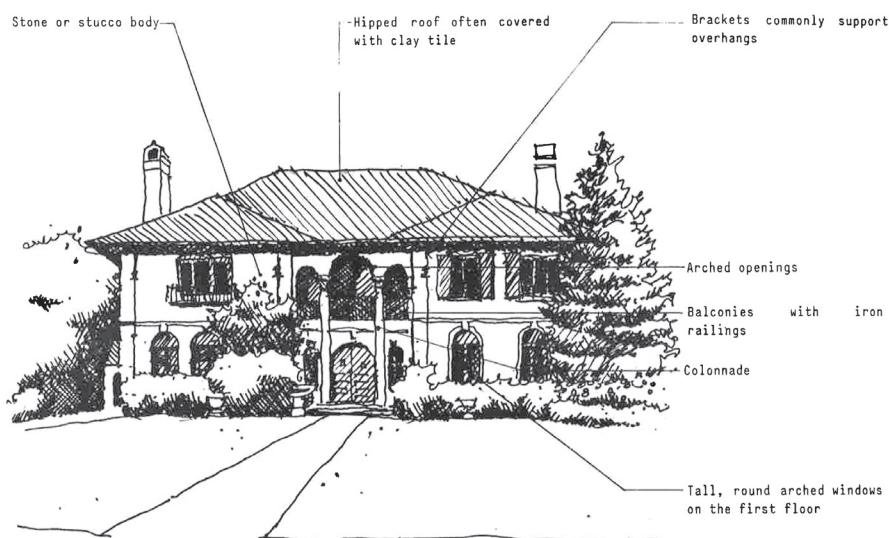
# COLOR SYSTEM F

**ASSOCIATED ARCHITECTURAL STYLES:** (20) NEO-CLASSICAL, (21) MEDITERRANEAN

In the early twentieth-century, a number of Mediterranean Styles became popular in Detroit. These limestone or stucco houses, inspired by the French and Spanish originals, ranged in size from modest stuccoed and white washed cottages to imposing classical mansions. Generally the small houses of this type (which often had red tile roofs) look best painted white. The larger structures, however, require more subtle coloring.

If the house is constructed or trimmed with stone this material might be matched for painting the cornice, windows, frames, sash, and doors. Too great a contrast between body material and trim will defeat the stately, formal character of the design.

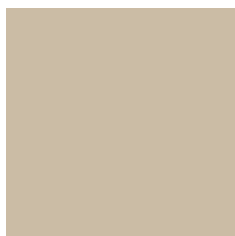
If painting becomes necessary for a stucco house, the original color should be matched. Otherwise, the stucco should be painted to match the stone trim above windows and around doors or one of the pale gray or yellow stucco colors. Otherwise, the trim colors may be white, light gray, or one of the darker colors suggested.



# COLOR SYSTEM F

## ACCEPTABLE COLOR COMBINATIONS \*MS = MUNSELL STANDARD

BODY	TRIM	SASH	SHUTTERS
Stucco: Leave natural or match original stucco, or match stone trim, or A:1, A:2, A:3, A:4  C:4 & C:5 for small villas only	Match body or match stone trim or A:8, B:6, B:8, B:11, B:12, C:4, C:5	Match trim color or B:8, B:11, B:12, B:19	Match trim color or A:8, B:11, B:19
Existing brick or stone			



**A:1 Yellowish Gray**  
MS: 2.5Y 8/2



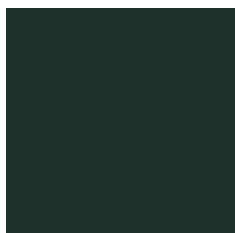
**A:2 Light Olive Gray**  
MS: 10Y 6/1



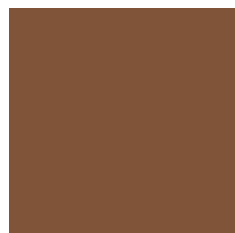
**A:3 Light Yellow**  
MS: 5Y 8/6



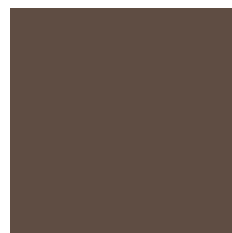
**A:4 Pale Yellow**  
MS: 2.5Y 8.5/4



**A:8 Blackish Green**  
MS: 2.5BG 2/2



**B:6 Moderate Brown**  
MS: 7.5YR 4/4



**B:8 Grayish Brown**  
MS: 5YR 3/2



**B:11 Grayish Olive Green**  
MS: 5GY 4/2



**B:12 Grayish Green**  
MS: 10G 4/2



**B:19 Black**  
MS: N 0.5/



**C:4 Yellowish White**  
MS: 5Y 9/1



**C:5 Yellowish White**  
MS: 2.5Y 9/2

**FIND OUT MORE!** [www.detroitmi.gov/hdc](http://www.detroitmi.gov/hdc)

**SUBMIT ALL DOCUMENTATION TO:** [hdc@detroitmi.gov](mailto:hdc@detroitmi.gov)