

**Focused Workshop**

# TRAVELING



**Greater Corktown Neighborhood Framework Plan**

**October 10, 5:30-7:30pm**

**@ Michigan Conference-Teamsters**



# GOAL OF THE WORKSHOP

Develop creative strategies around how to improve street design, safe intersections, parking & Michigan Avenue



Greater Corktown  
Neighborhood  
Framework Plan

MDOT Michigan  
Ave Study

# Today's Workshop

5:30PM Workshop Goals

6:00PM Rotating design exercises (20 mins each)

**A. Street Design**

**B. Intersections**

**C. Parking**

**D. Michigan Ave**

7:00PM Report-outs

7:20PM Next Steps



# Looking back: Detroit in 1949

Michigan Ave

Michigan  
Central Train Depot

Study Area





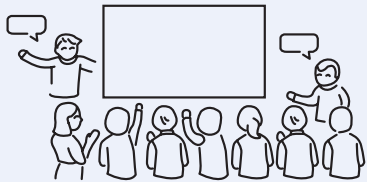
# Community planning & input

SUMMER 2018

SUMMER 2019 - SPRING 2020

FALL 2019 -  
SPRING 2020

## THE FORD CBO



**\$2.5M**

Affordable Housing  
Leveraging Fund

**\$2.5M**

Strategic  
Neighborhood  
Core City Fund

**\$5M**

for workforce training,  
education,  
& development

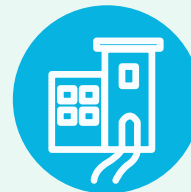
## CITY OF DETROIT GREATER CORKTOWN PLANNING PROCESS



GREENING



TRAVELING

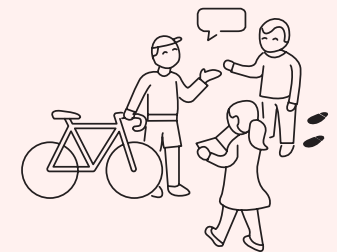


BUILDING

**FORD  
PROJECT  
PLANNING**

**CITY ONE  
MOBILITY  
CHALLENGE**

## MDOT P.E.L. STUDY



**Kick-Off:  
October 9/10th**

Recommendations  
to guide  
infrastructure  
improvements along  
Michigan Ave

Alternatives &  
recommendations  
will be developed  
in Spring 2020

# Framework purpose

---

**create a short and long-term plan that promotes inclusive growth of Detroit's oldest established neighborhood, while preserving unique character, cultural heritage & integrity.**



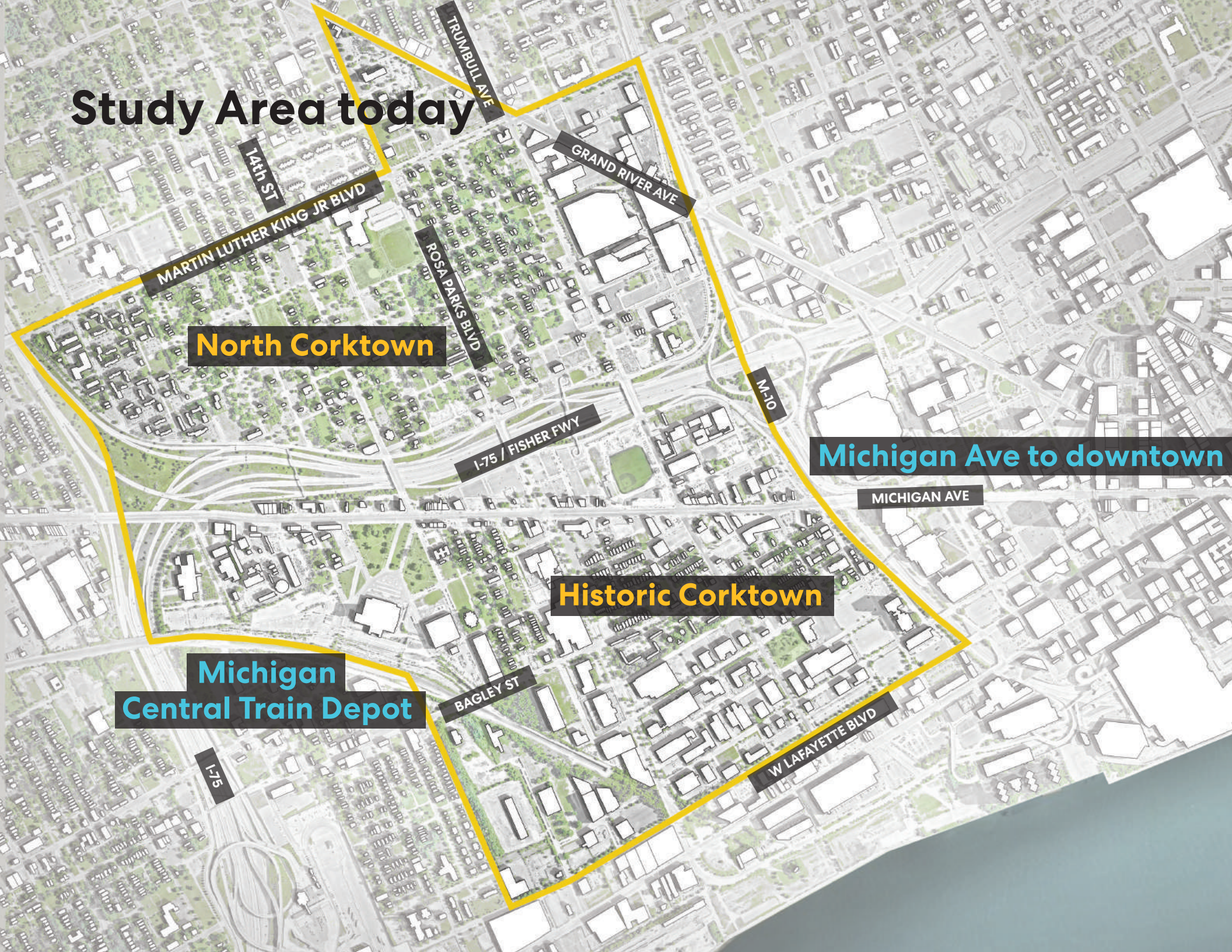
# Study Area today

**North Corktown**

**Historic Corktown**

**Michigan Central Train Depot**

**Michigan Ave to downtown**





# Framework Plan process

SUMMER 2019

FALL 2019

SPRING 2020

**Phase 1:**  
Existing Conditions Research & Market Analysis



**Phase 2:**  
Neighborhood Framework Plan

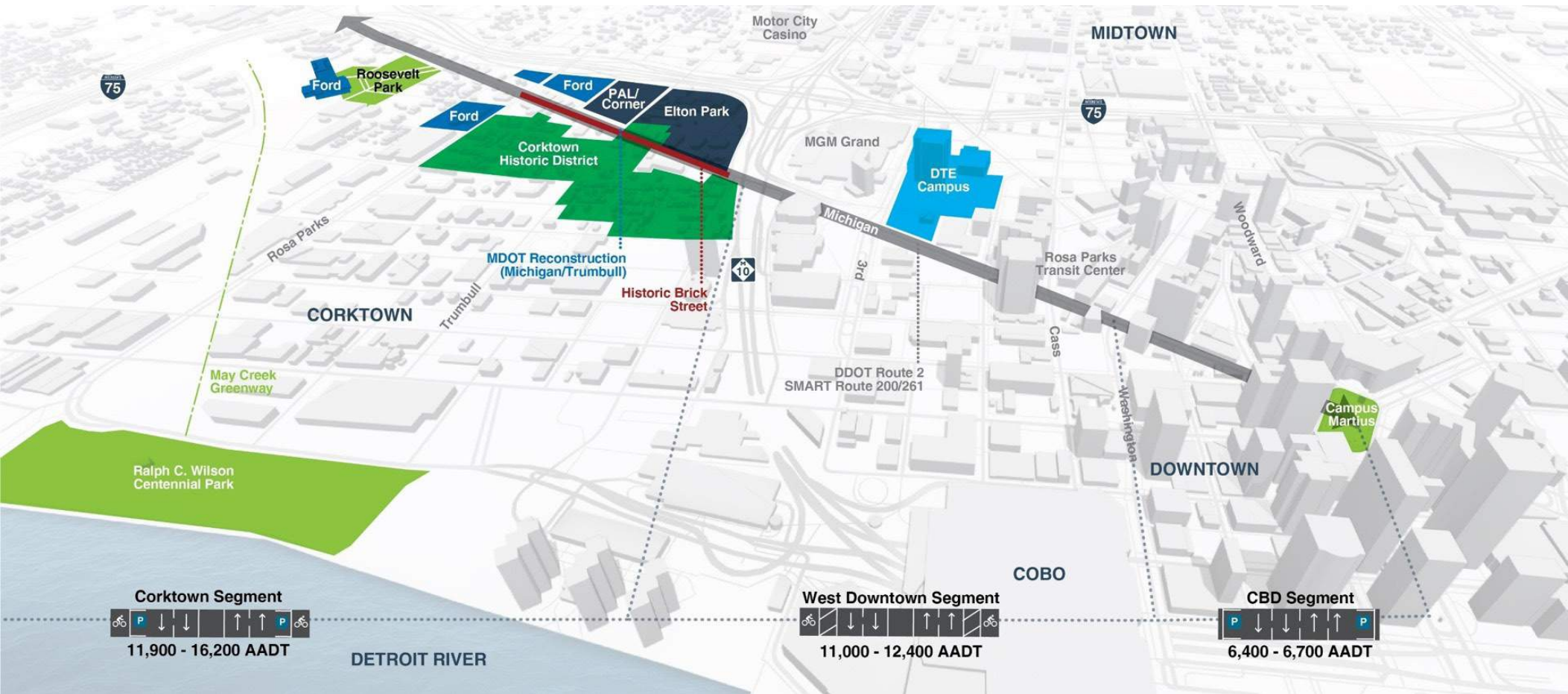


# Why a Planning & Environmental Linkages (PEL) for Michigan Ave?

- 1 Consider environmental, community, and economic goals early in the transportation planning process**
- 2 Consider the infrastructure, geometric/safety needs, and operational needs of all modes of transportation**
- 3 Consider strategies that have been developed and evaluated through a data-driven approach, that will inform the environmental review process**

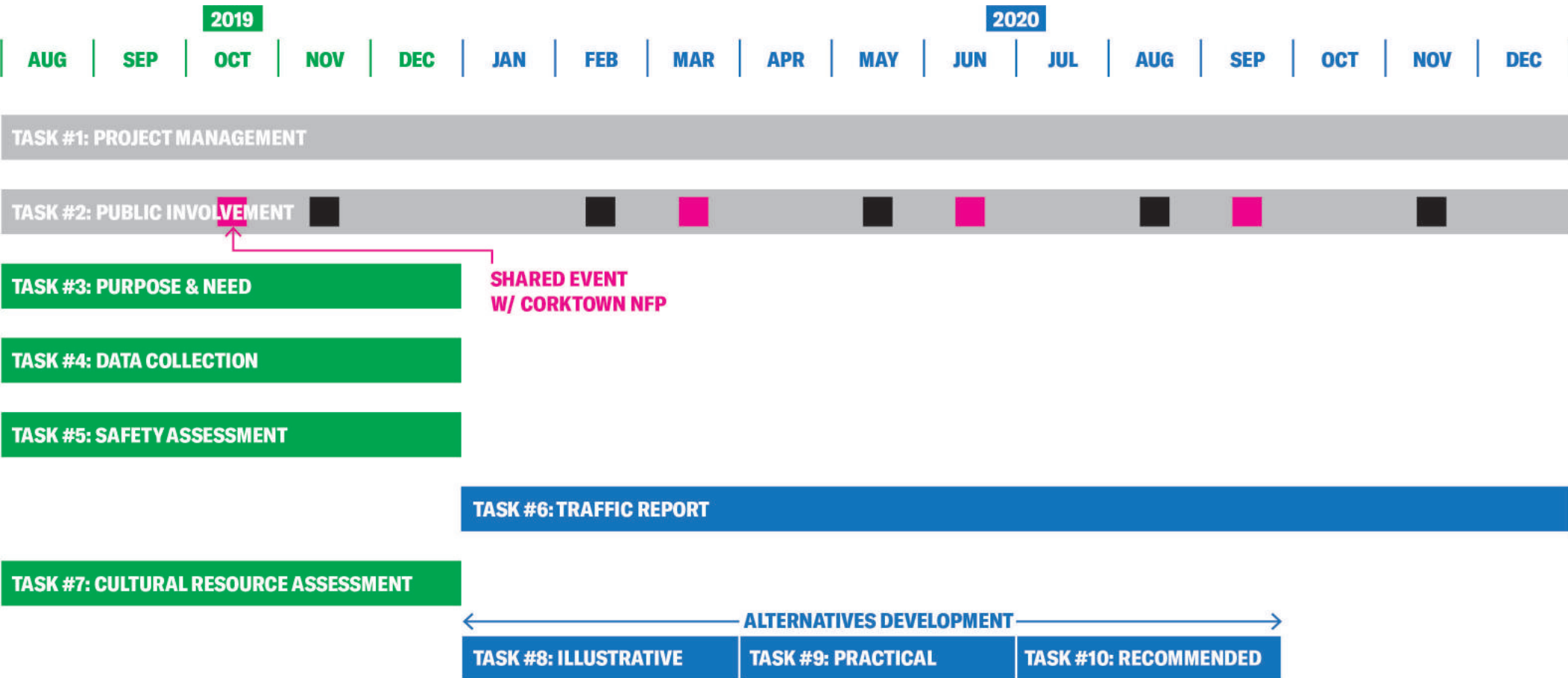


# Planning & Environmental Linkages (PEL) Michigan Ave Study Area





# Planning & Environmental Linkages (PEL) Michigan Ave **Schedule**



# Planning & Environmental Linkages (PEL) Michigan Ave

## Next Steps (2019)

- Finalize sequence of community and committee meetings
- Aggregate community feedback and begin development of P&N, goals, objectives, and performance measures
- Continue data collection to support alternatives development
- Continue assessment of traffic, safety, and cultural resources

## Next Steps (2020)

- Begin alternatives development



# With your input today, we will develop...

## FRAMEWORK

**Street  
improvement strategies**

**Tactical intersection  
improvements**

**Parking strategies**

## PEL MICHIGAN AVE

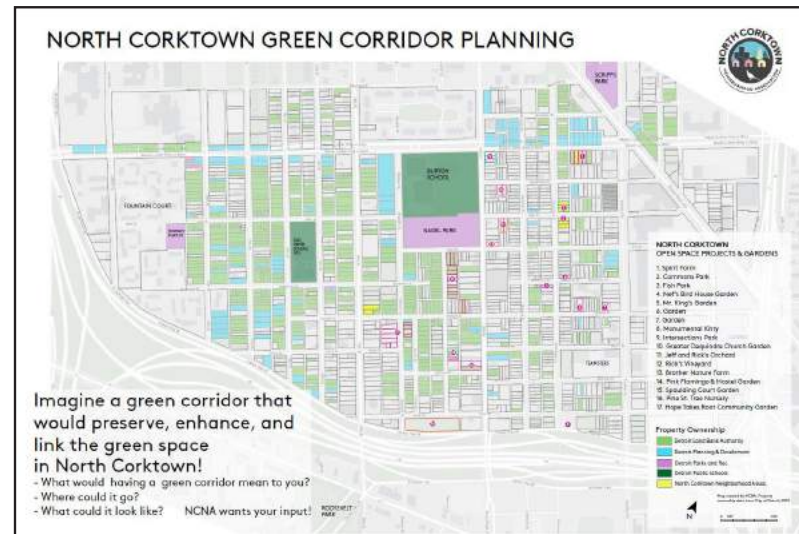
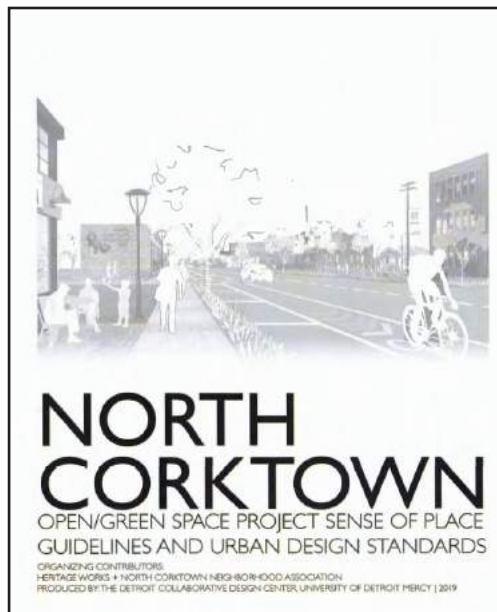
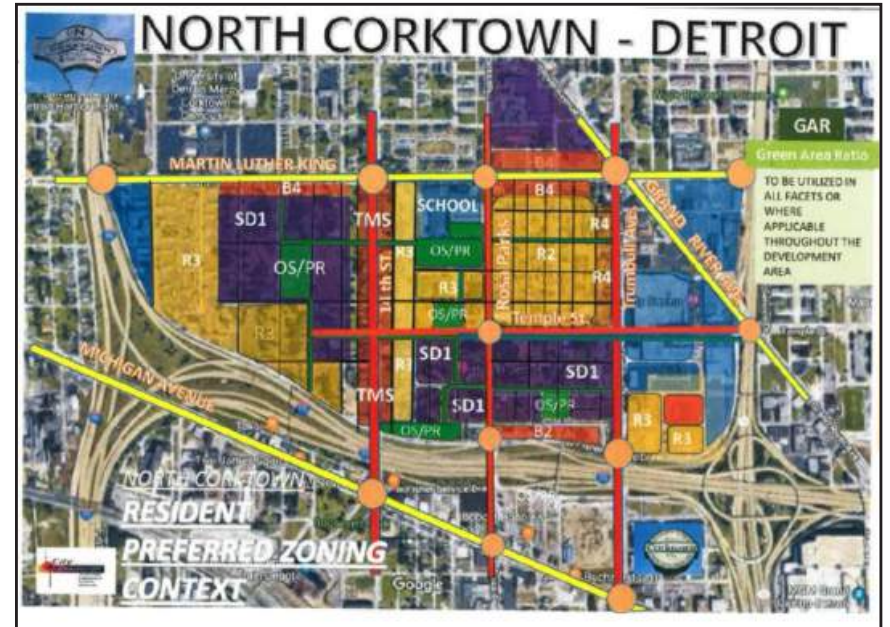
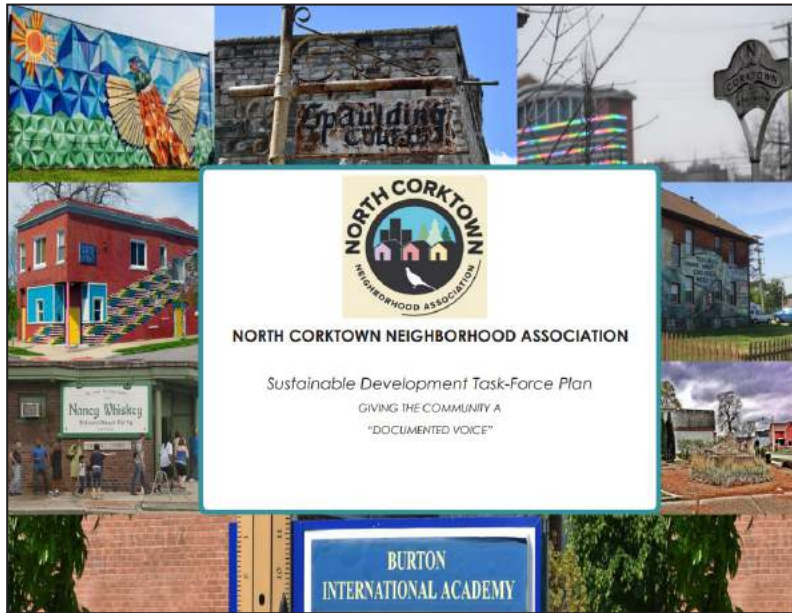
**The study's P&N statement**

**The P&N statement will  
support to the development  
of goals, objectives, and  
performance measures**

**The alternatives for Michigan  
Avenue developed as part of this  
study will be evaluated using these  
performance measures**



# Building on existing community efforts







**PINK FLAMINGO**

VEGAN - DASHI  
THE BRANDED CRISPS  
NORWICH HILL  
TAVELI TART

VEGETARIAN - \$12  
THE BUBBLES  
BUBBLED CARROT  
MINDFULNESS  
HEART COINCY  
THE HERBALS  
GRAIN SALAD  
FRANZINI (GRAIN) + BEANS  
GRILLED CHICKEN

BEANS  
MILKSHAKE  
RICE BALLS \$3  
\$2 each  
\$3 for \$5

A LA CARTE:  
\$4 GREEN SALAD  
\$4 BURGERS (GRAIN) + BEANS  
\$4 HAWAIIAN + BEANS  
\$4 TAVELI TART  
\$5 GRILLED CHICKEN

Welcome  
Pink  
Flamingo

Greater Customer Planning Framework Meeting Sign in

NAME: \_\_\_\_\_

DATE: \_\_\_\_\_

TIME: \_\_\_\_\_

LOCATION: \_\_\_\_\_

PHONE: \_\_\_\_\_

EMAIL: \_\_\_\_\_

COMPANY: \_\_\_\_\_

ROLE: \_\_\_\_\_

BY: \_\_\_\_\_





Detroit's Oldest Bar  
EST. 1902

MICHIGAN  
CENTRAL SECTOR  
CBO IMPACT AREA

M-10

800 ST

1000 ST





FAMILY  
&  
FRIENDS  
DAY  
2019

FAMILY  
&  
FRIENDS  
DAY  
2019

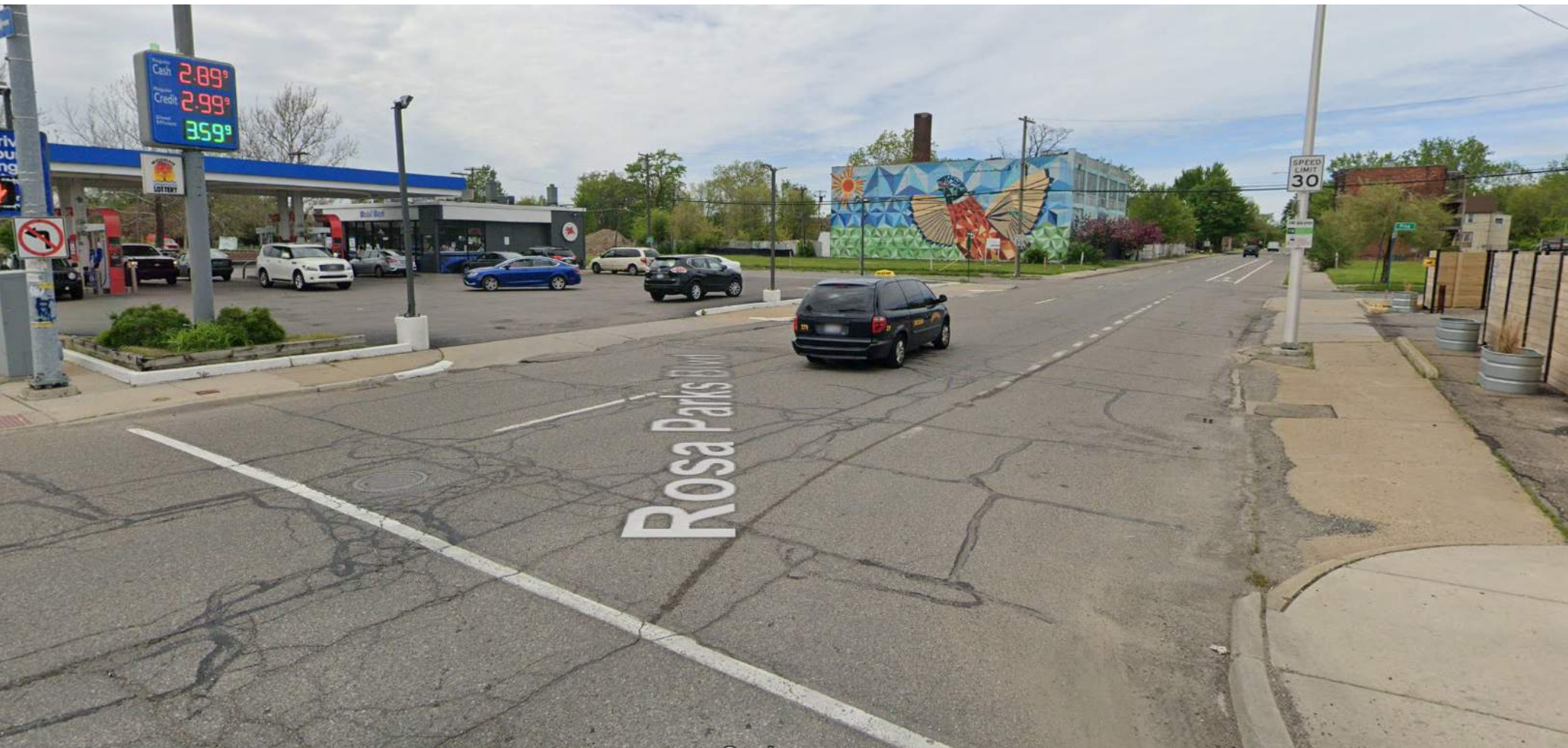






# What we've heard

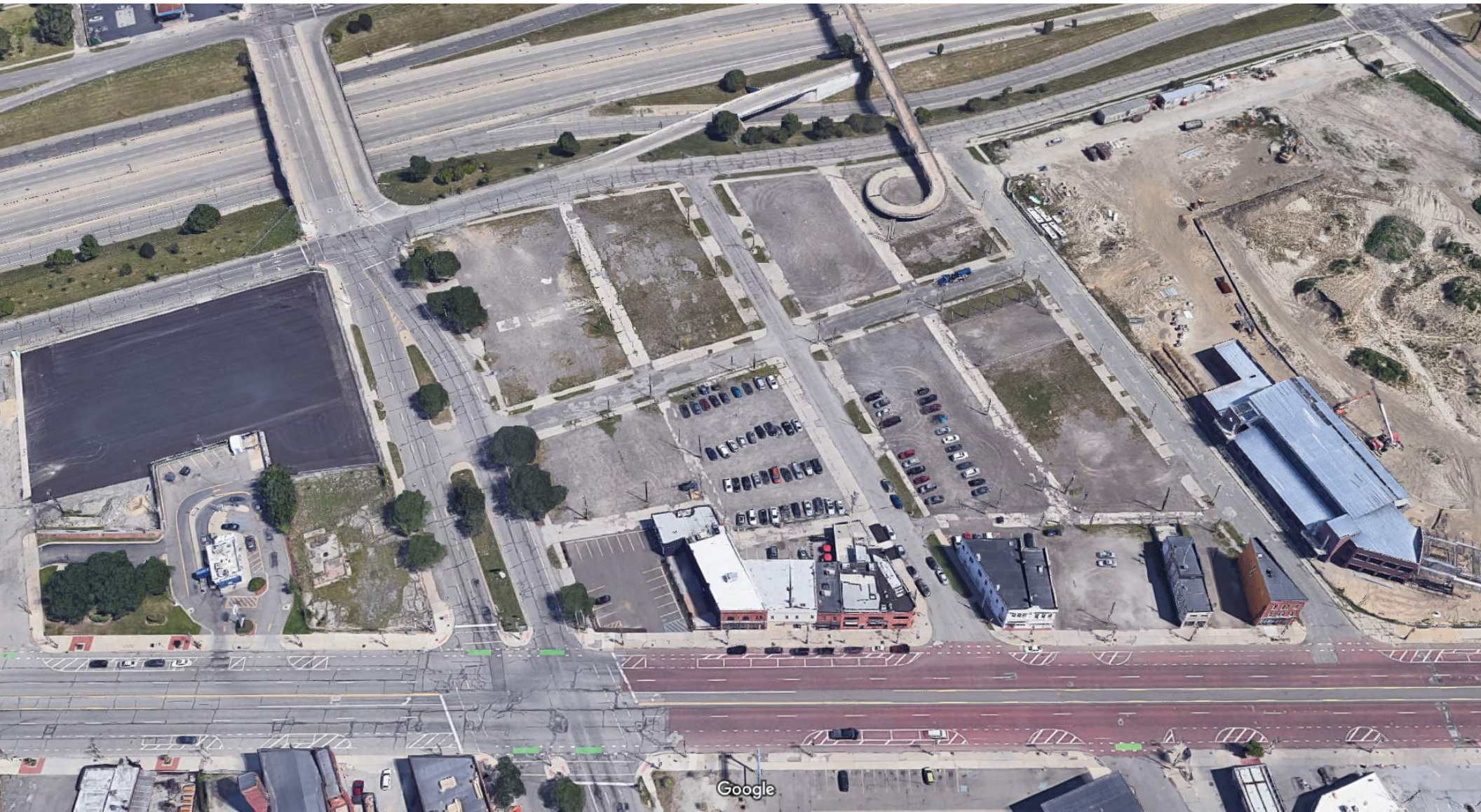
## Different perspectives on how Rosa Parks Blvd functions





# What we've heard

## The importance of parking availability and access





# What we've heard

**Sidewalk conditions can be improved**





# What we've heard

## Pedestrian safety & experience challenges

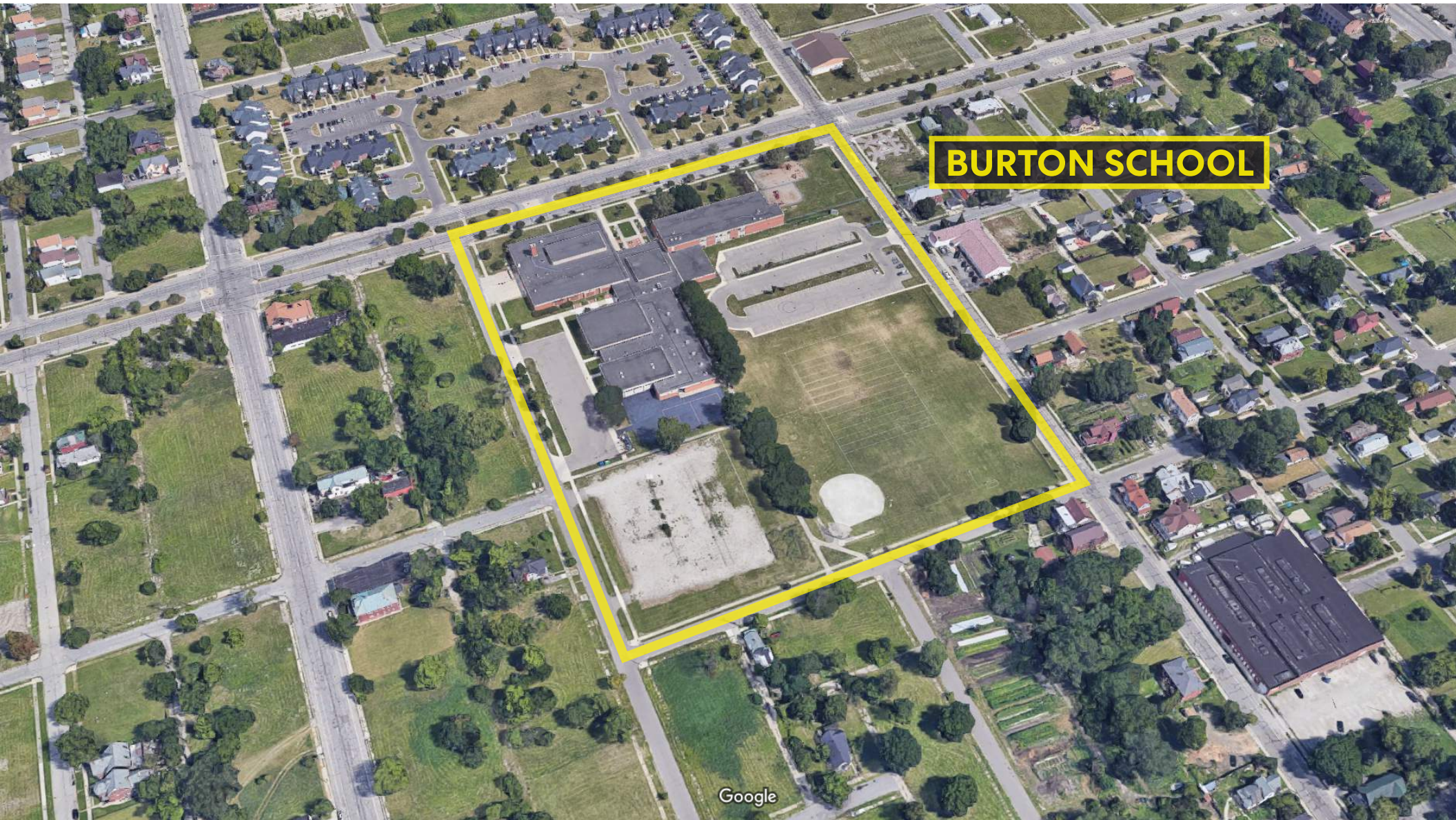
Major crossings do not have traffic signals





# What we've heard

Safe routes for families and children/youth desired





# What we've researched

## A range of street improvements



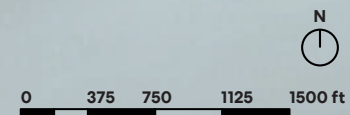


# What we've researched

PAINTED CROSSWALKS

UNPAINTED

Opportunities to add crosswalk markings





**“TRAVELING”**



# Thinking about the future: TRAVELING

2019



2030?



“BUILDING”

Cochrane St & Pine St



BIKE ROUTE



“GREENING”



“TRAVELING”

Pine St



# “TRAVELING” DESIGN EXERCISES



**Street  
Design**



**Intersections**



**Parking**



**Michigan Ave**





# Street Design



**How can Rosa Parks Blvd & 14th St work as safe, N/S streets that connect to significant community places?**





# Intersections



**What low-cost, high-impact design strategies can be used to make people feel safer?**



**Parking**



**How can on-street parking & parking lots be used strategically & creatively for the neighborhood?**





**Michigan Ave**



**What is the future of Michigan Ave?**



# Next steps in the process

SUMMER 2019

FALL 2019

SPRING 2020

**Phase 1:**  
Existing Conditions Research & Market Analysis



**Phase 2:**  
Neighborhood Framework Plan

**Visit the City website:**

[www.detroitmi.gov/greatercorktown](http://www.detroitmi.gov/greatercorktown)

**Sign-up for the newsletter!**

