



DEXTER STREETScape GATEWAY LOCATION OPTIONS

OPTION 1



OPTION 2



GATEWAY LOCATIONS

GATEWAY LOCATIONS

- Located at street entrances with green right-of-way space
- Honoring a historic district with cultural heritage
- Key neighborhood entrances highlighted

GATEWAY LOCATIONS

- Equally spaced along Dexter Avenue
- Two locations at street entrances with green right-of-way space
- At Waverly to highlight Zussman Playground
- Honoring a historic district with cultural heritage
- Key neighborhood entrances highlighted

CONCEPTS



CONCEPTS

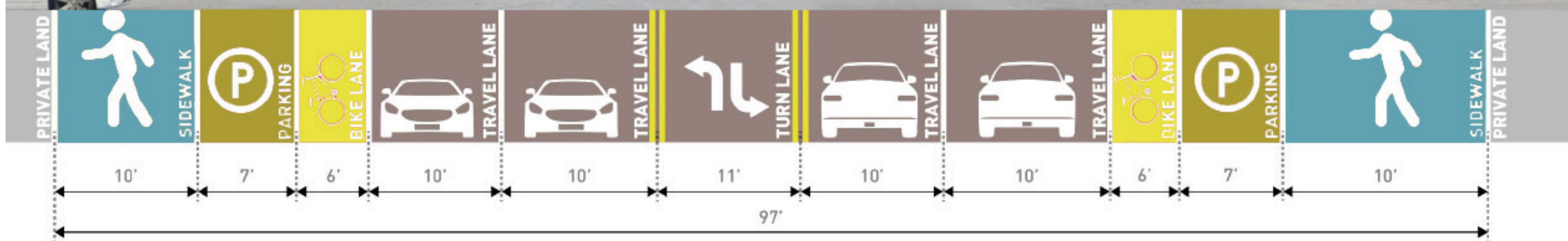
Conceptual designs for the gateways are being developed and community input will be sought at future community meetings

DEXTER AVENUE



DEXTER STREETSCAPE CROSS SECTION OPTIONS

EXISTING SECTION



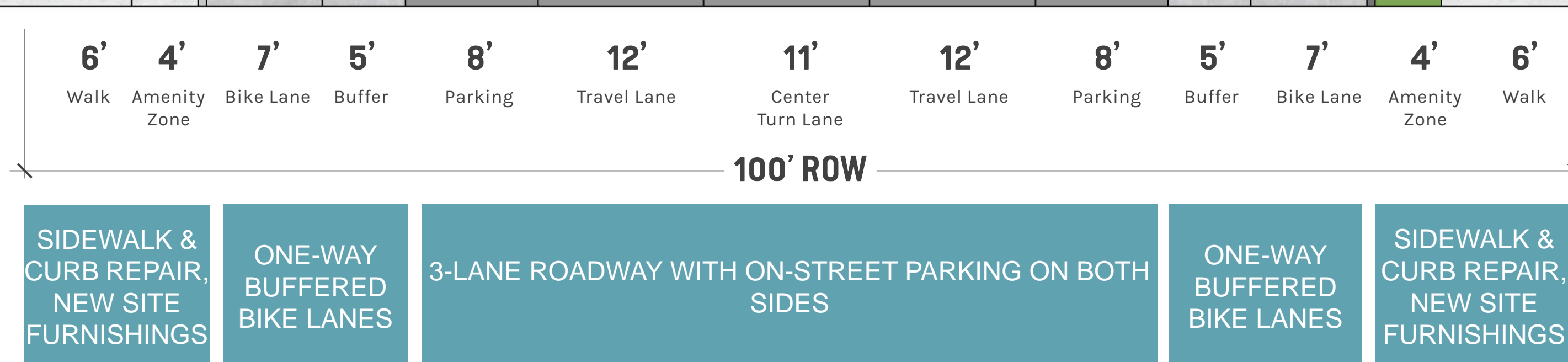
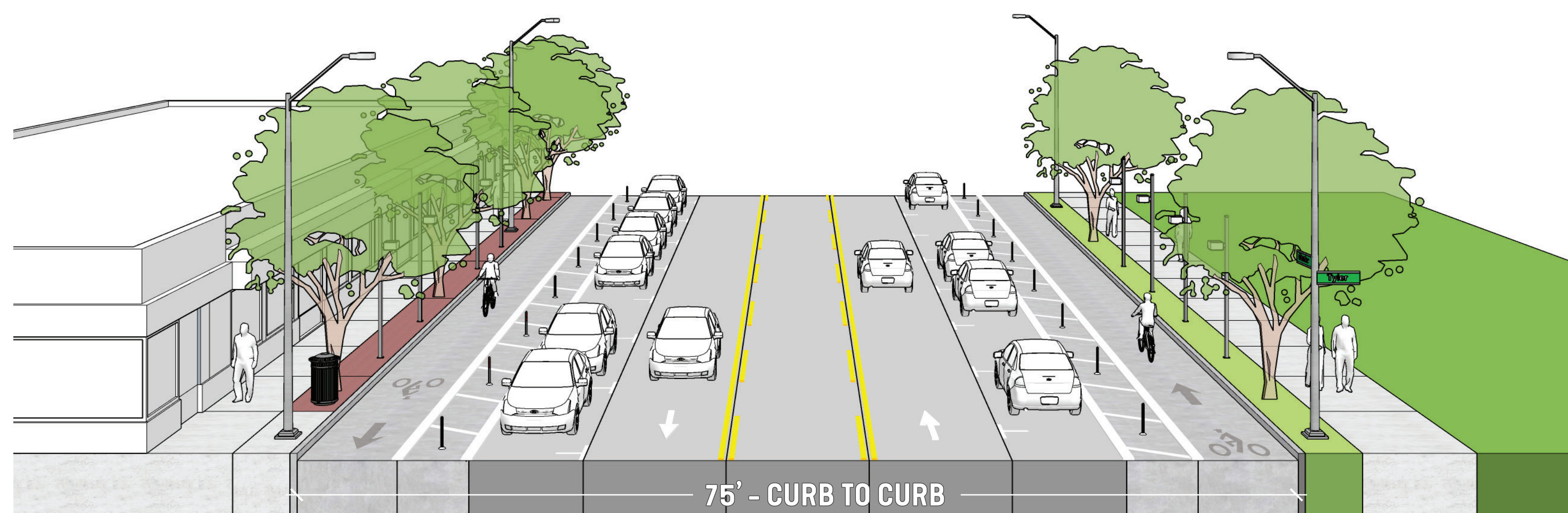
EXISTING CONDITIONS

EXISTING STREETSCAPE CHARACTERISTICS

- Bike lanes not buffered
- Street wide & open encouraging higher traffic speeds
- Underutilized roadway space with excess capacity
- Wide pedestrian crossings
- Streetscape not reflective of neighborhood character
- Streetscape not supportive of business corridor

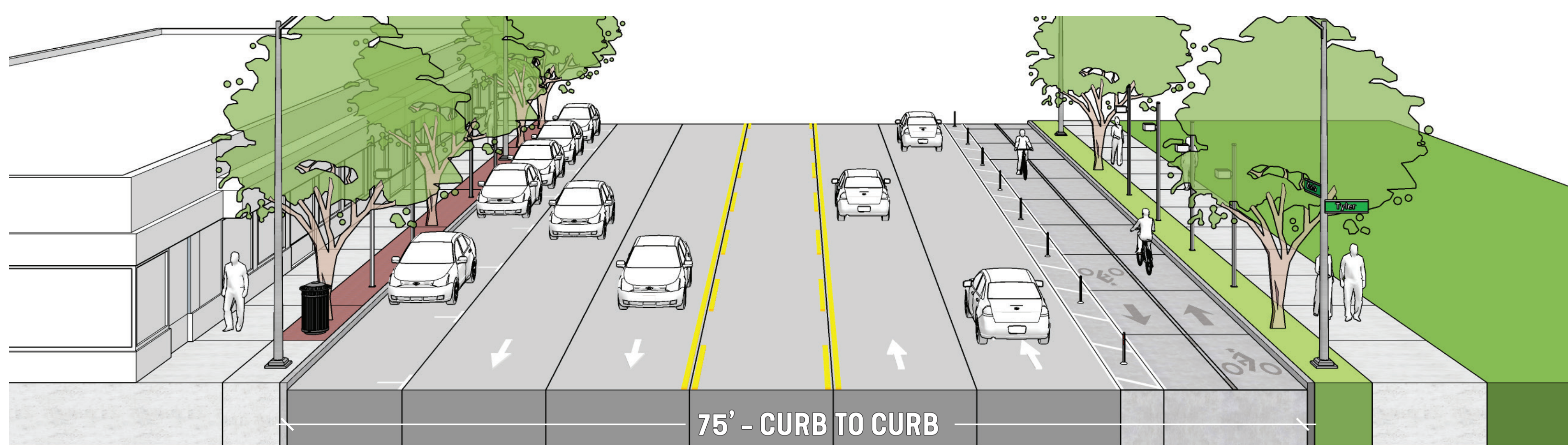
PROPOSED SECTIONS

OPTION 1



3 LANE ROADWAY WITH BUFFERED BIKE LANES

OPTION 2



5 LANE ROADWAY WITH 2-WAY CYCLE TRACK

OPTION 1: STREETSCAPE CHARACTERISTICS

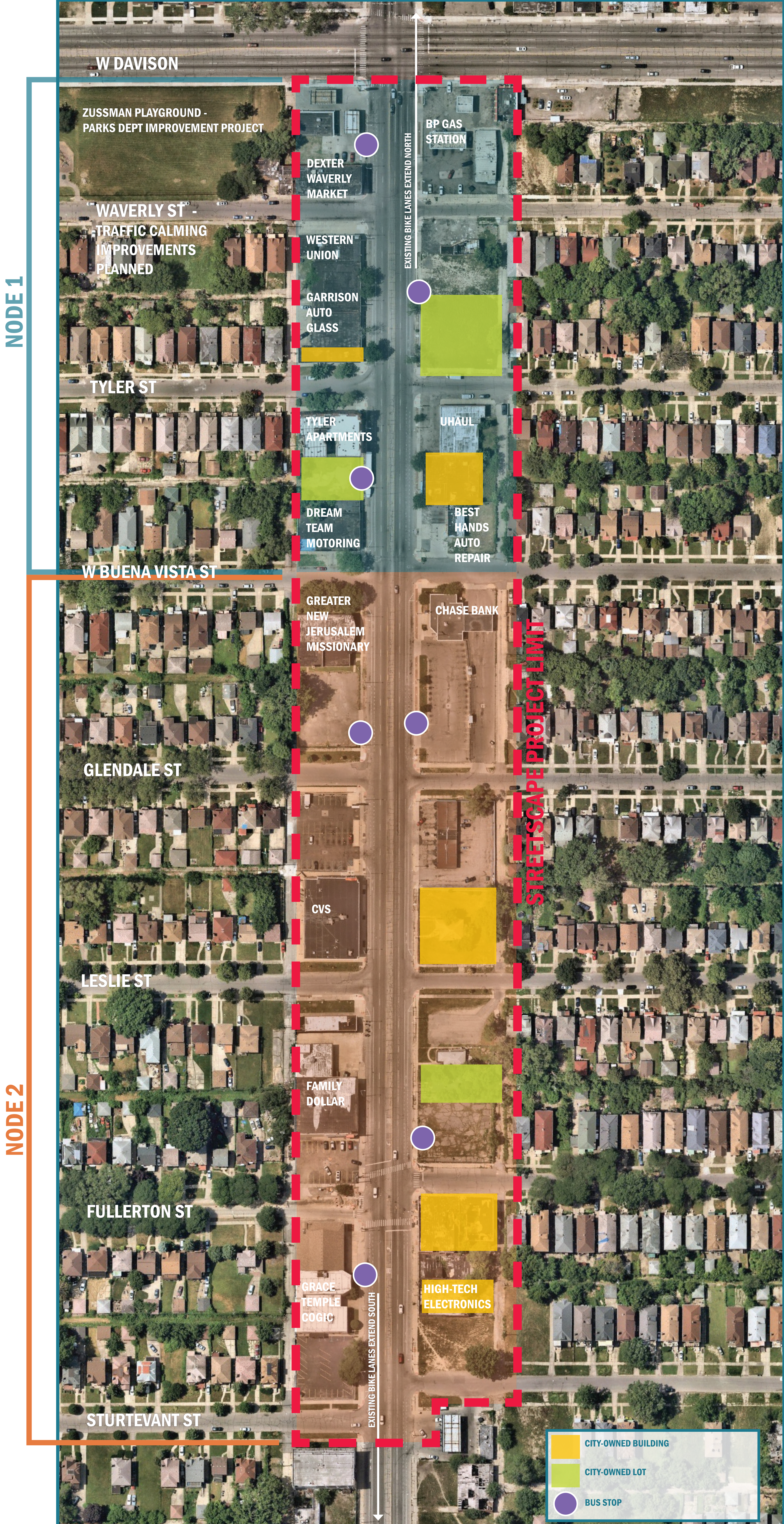
- Parking on both sides of the street
- Protected bike lanes on both sides of the street
- Opportunity for curb bump-outs on both sides of the street
- Provides traffic calming reducing vehicular speeds
- Seamless transitions to existing bike lanes to the north and south
- Less bike infrastructure than 2-way bike lanes
- Traditional bike lanes requires less education for drivers and cyclists

OPTION 2: STREETSCAPE CHARACTERISTICS

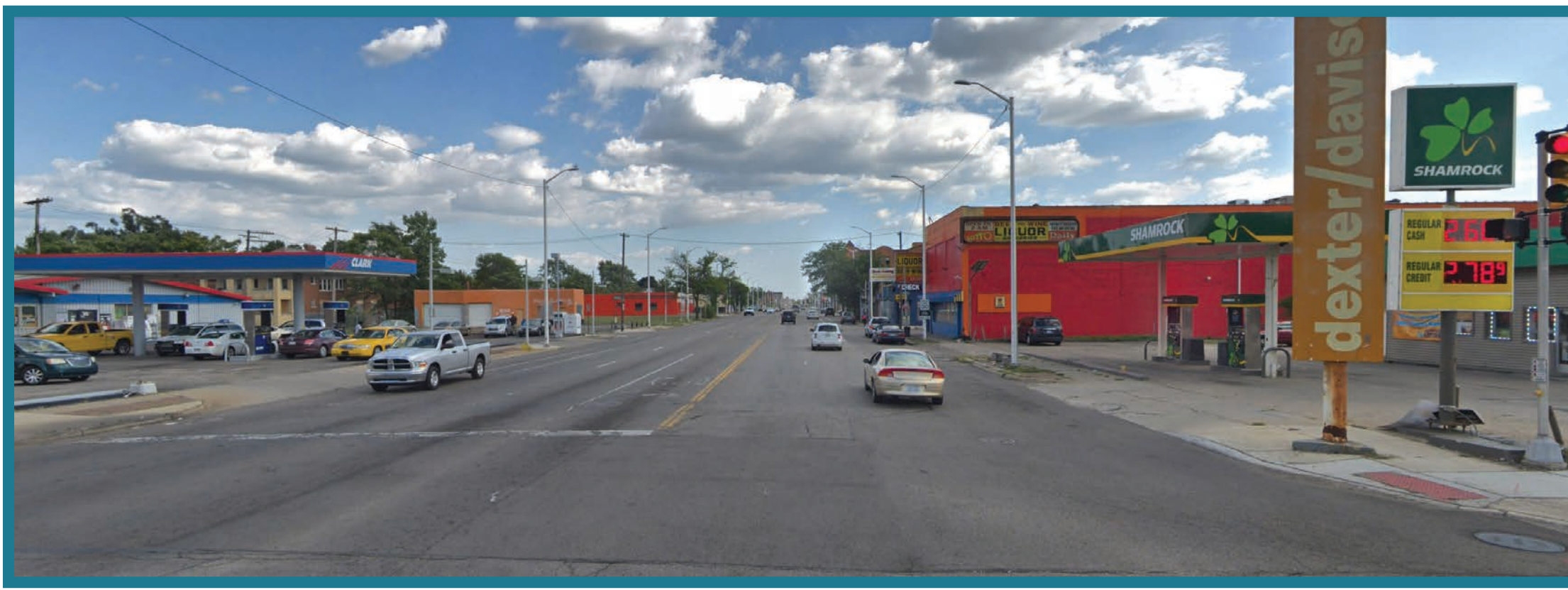
- Parking on one side of the street
- Dedicated space for cyclists improves safety
- Opportunity for curb bump-outs on parking side
- Provides traffic calming reducing vehicular speeds
- Requires transition to existing bike lanes at signalized intersections
- Comprehensive education program needed for drivers and cyclists
- Bus islands required on cycle track side of street



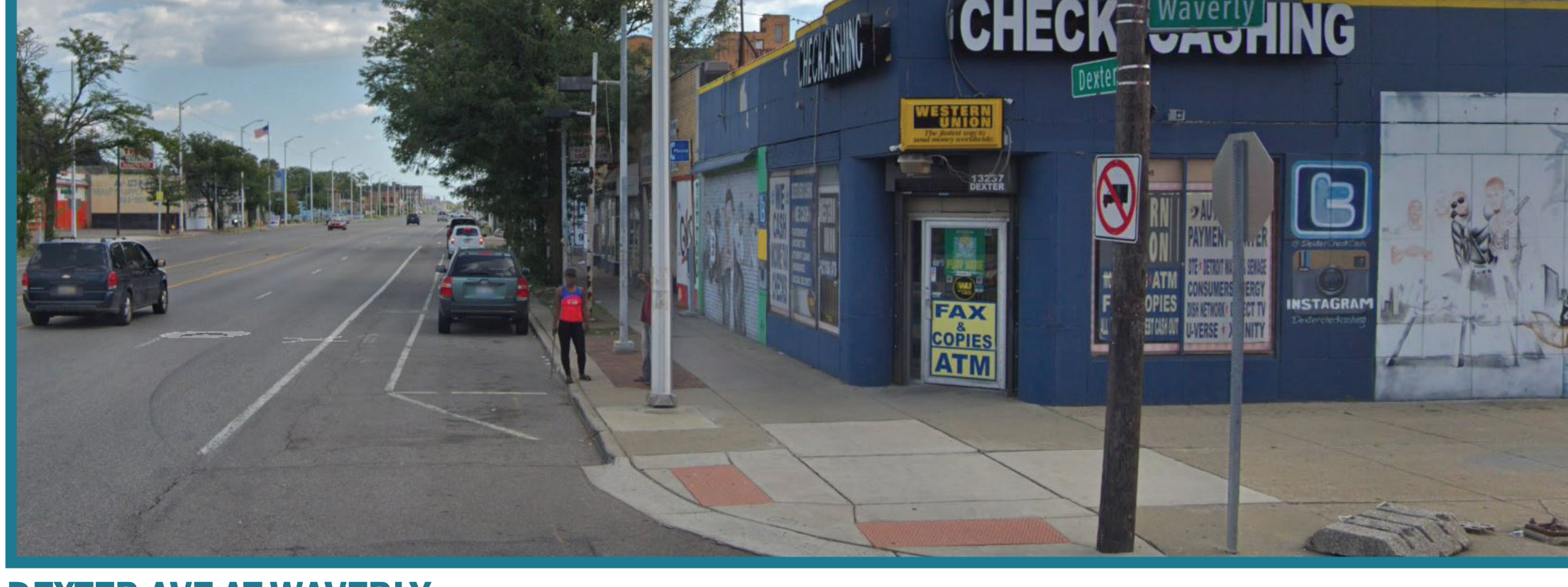
DEXTER STREETScape IMPROVEMENTS



ZUSSMAN PLAYGROUND - PARKS DEPT IMPROVEMENT PROJECT



DEXTER AVE AT DAVISON



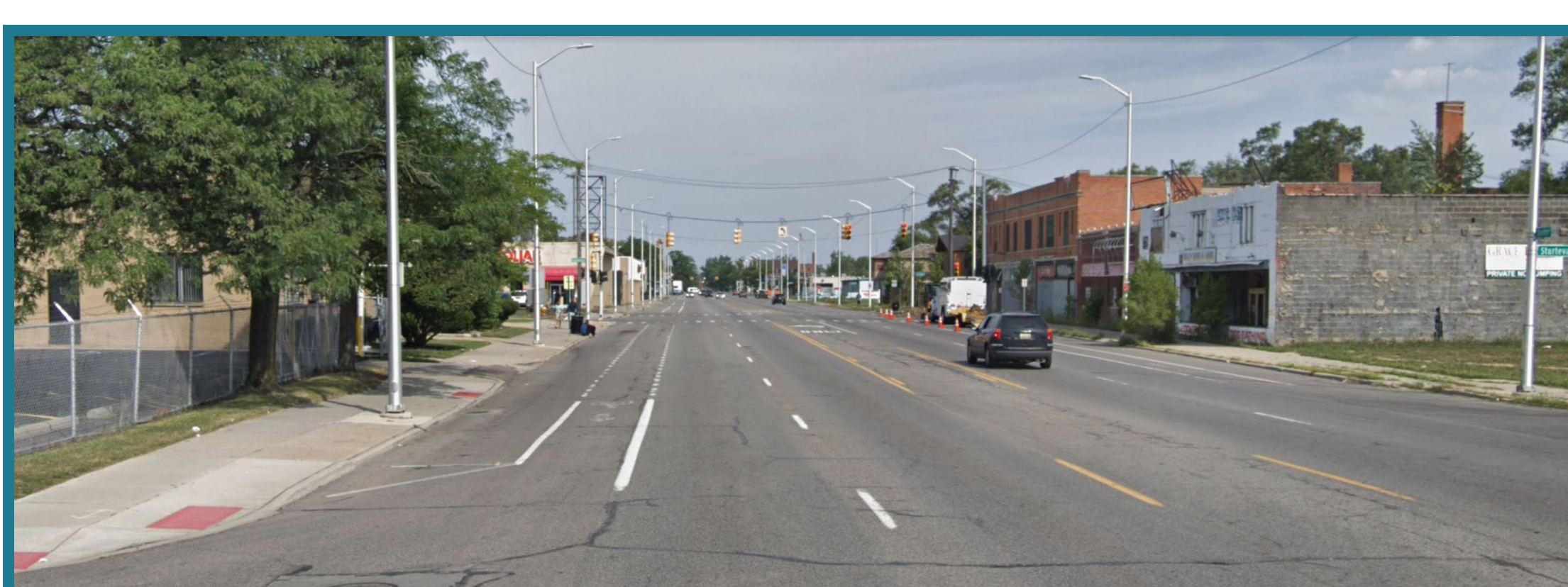
DEXTER AVE AT WAVERLY



DEXTER AVE AT BUENA VISTA



DEXTER AVE AT FULLERTON



DEXTER AVE AT STURTEVANT



DEXTER AVE

DEXTER AVENUE

September 12, 2019