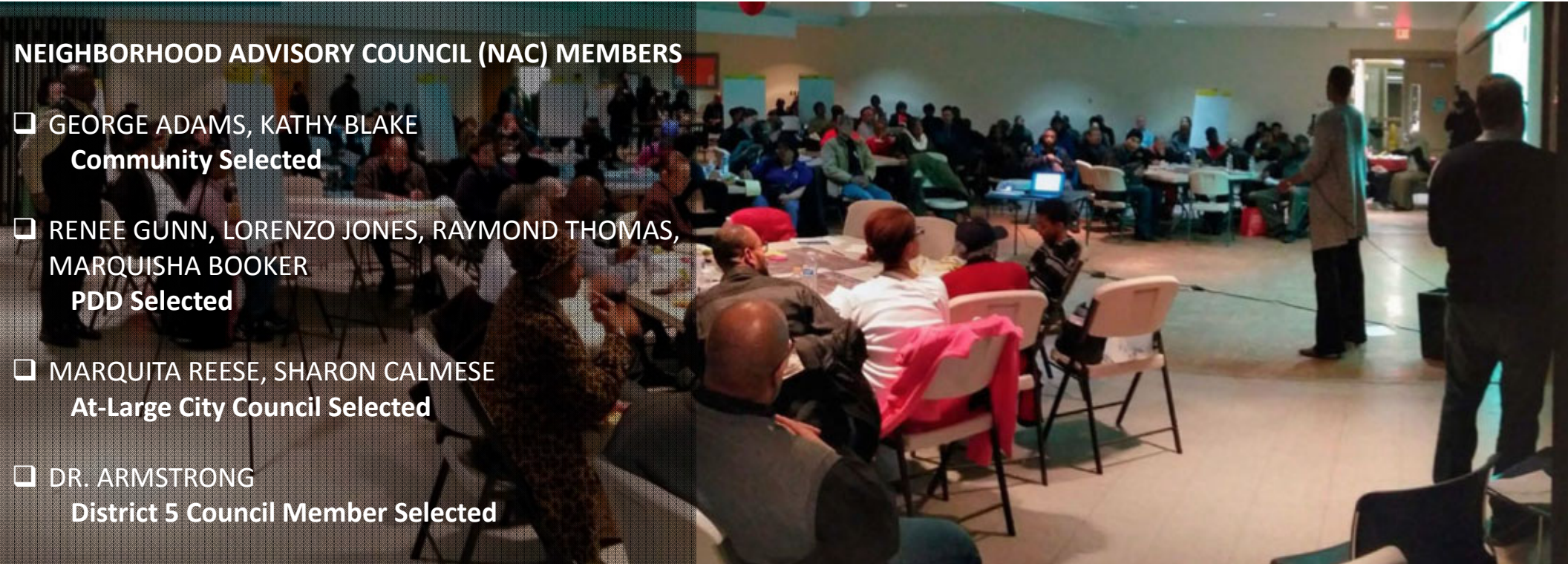




AGENDA

- **INTRODUCTION**
- **SUMMARY of COMMUNITY BENEFITS PROVISION – Q&A**
- **HERMAN KIEFER DEVELOPMENT UPDATE**
- **ROSA PARKS – CLAIRMOUNT FRAMEWORK UPDATE**
- **OTHER COMMUNITY ANNOUNCEMENTS**
- **CLOSING**



NEIGHBORHOOD ADVISORY COUNCIL (NAC) MEMBERS

- GEORGE ADAMS, KATHY BLAKE
Community Selected
- RENEE GUNN, LORENZO JONES, RAYMOND THOMAS,
MARQUISHA BOOKER
PDD Selected
- MARQUITA REESE, SHARON CALMESE
At-Large City Council Selected
- DR. ARMSTRONG
District 5 Council Member Selected

7
PUBLIC NAC
MEETINGS
MAR 2017 – APRIL 2019

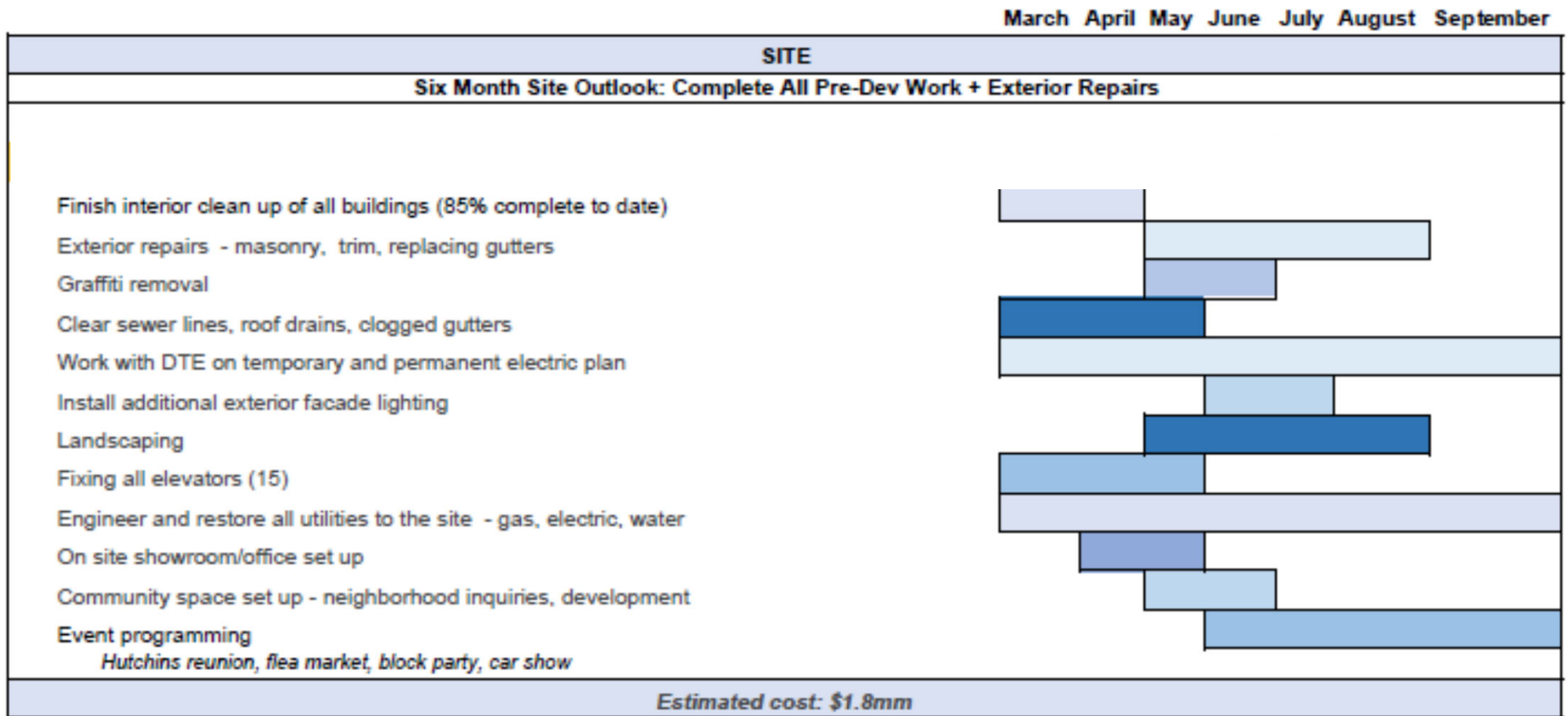
JUNE 2017
NAC
CONSENSUS

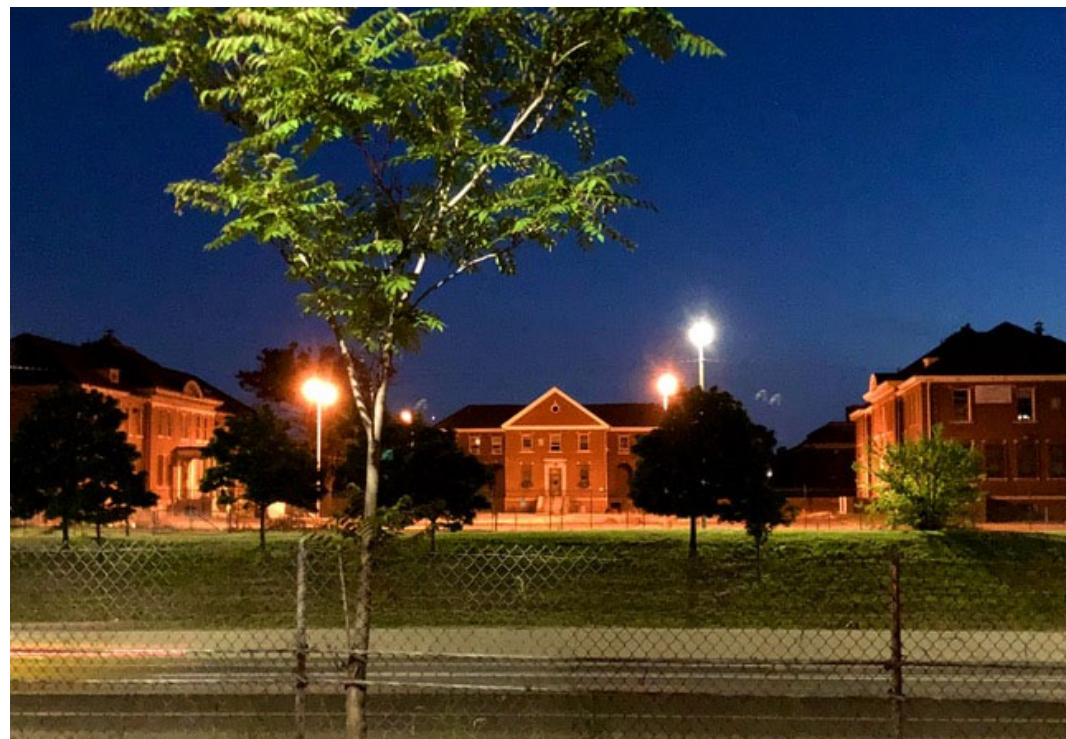
JUNE 2017
CITY COUNCIL
APPROVAL

- HKD PROPERTIES BOARDED UP WITHIN 6 MONTHS**
- DLBA PROPERTIES BOARDED UP BY HKD WITHIN 6 MONTHS**
- HKD IN DISCUSSIONS WITH POTENTIAL LOCAL PARTNERS TO COMPLY WITH 20% REHAB**
- HKD COMPLYING WITH LAND STEWARDSHIP**
- HKD COMPLYING WITH LOCAL HIRING REQUIREMENT**
- HKD COMPLETED NPS PART I HISTORIC PRESERVATION FOR THE HOSPITAL, HUTCHINS SCHOOL, AND CROSMAN SCHOOL. HKD CONTINUES TO MARKET PROMOTION OF COMMUNITY AND CULTURAL EVENTS FOR FINAL PART II.**
- HKD RESTORED RECREATIONAL AMENITIES ON HUTCHINS PLAYGROUND**
- HKD OFFERS COMMUNITY QUARTERLY UPDATES**

HERMAN KIEFER CAMPUS

6 MONTH OUTLOOK





HERMAN KIEFER DEVELOPMENT (HKD) MAIN CAMPUS



45,000
LBS
OF GARBAGE
REMOVED

12,100
HRS
OF CLEAN-UP
LABOR

40+
FIRE
HYDRANTS
PAINTED

3000
BULBS
PLANTED

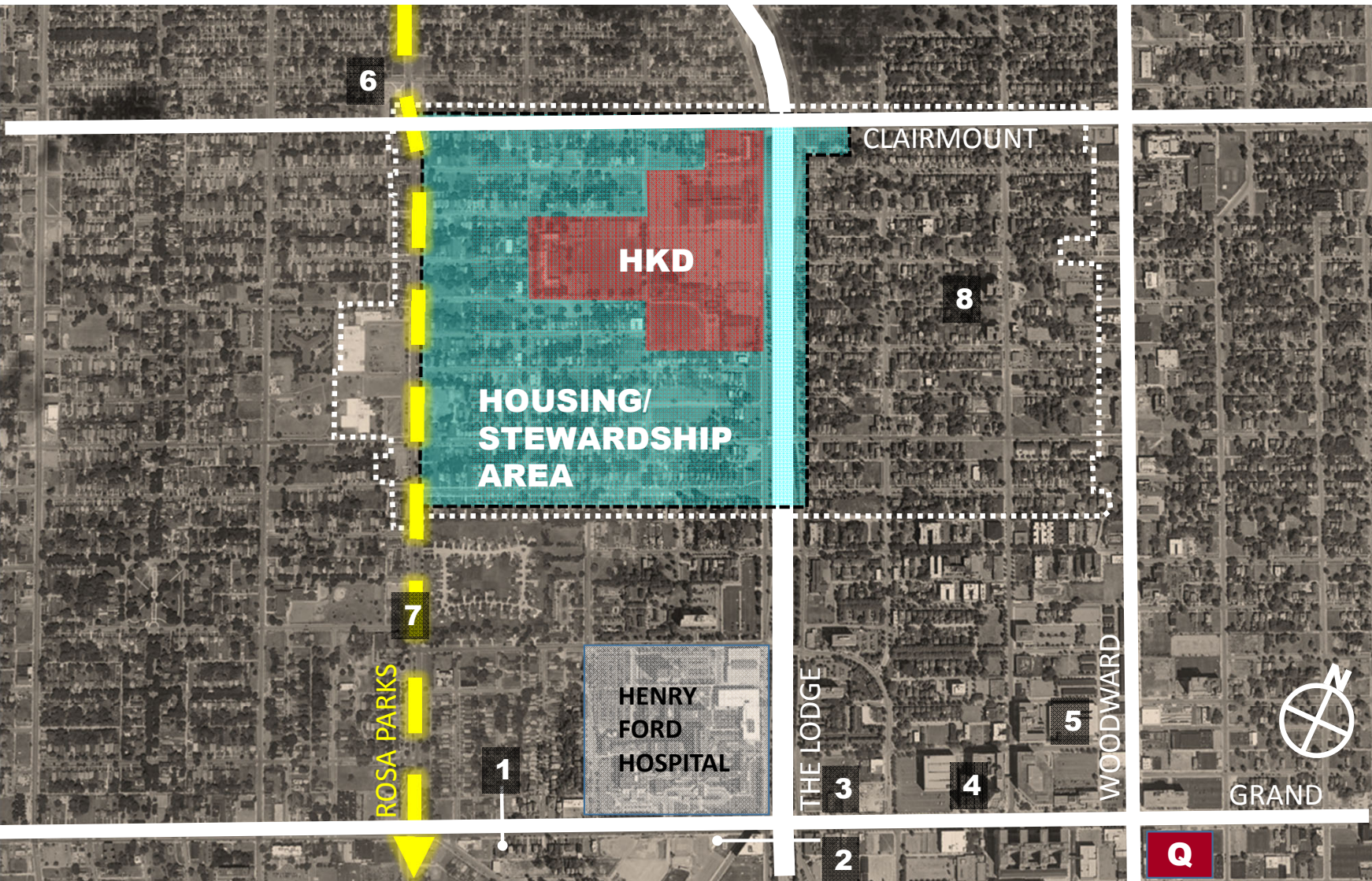
HERMAN KIEFER LAND STEWARDSHIP



NEIGHBORHOOD PILOT TREE NURSERY

- NURSERY OPERATOR: WHOLESAL TREE, LLC (ORIGINATED IN DETROIT IN 1946)
- SITE PLAN DESIGN & PERMITTING PROCESS WITH PDD & BSEED
- DESIGN SUMMER 2019
- PLANT 2400 TREES IN FALL 2019
- CENTRAL DETROIT CHRISTIAN CDC INVOLVMENT

HERMAN KIEFER DEVELOPMENT NEIGHBORHOOD



- 1. **MOTOWN MUSEUM - \$50M**
- 2. **HFHS SOUTH CAMPUS \$155M**
- 3. **3RD & GRAND - \$53M**
- 4. **FISHER BLDG. - \$50M**
- 5. **KAHN BLDG. - \$50M**
- 6. **GORDON PARK - \$585K**
- 7. **ROSA PARKS BLVD ROAD BOND - \$3.3M**
- 8. **CDCCDC - \$30M**

TOTAL \$390M

ROSA PARKS/ CLAIMOUNT

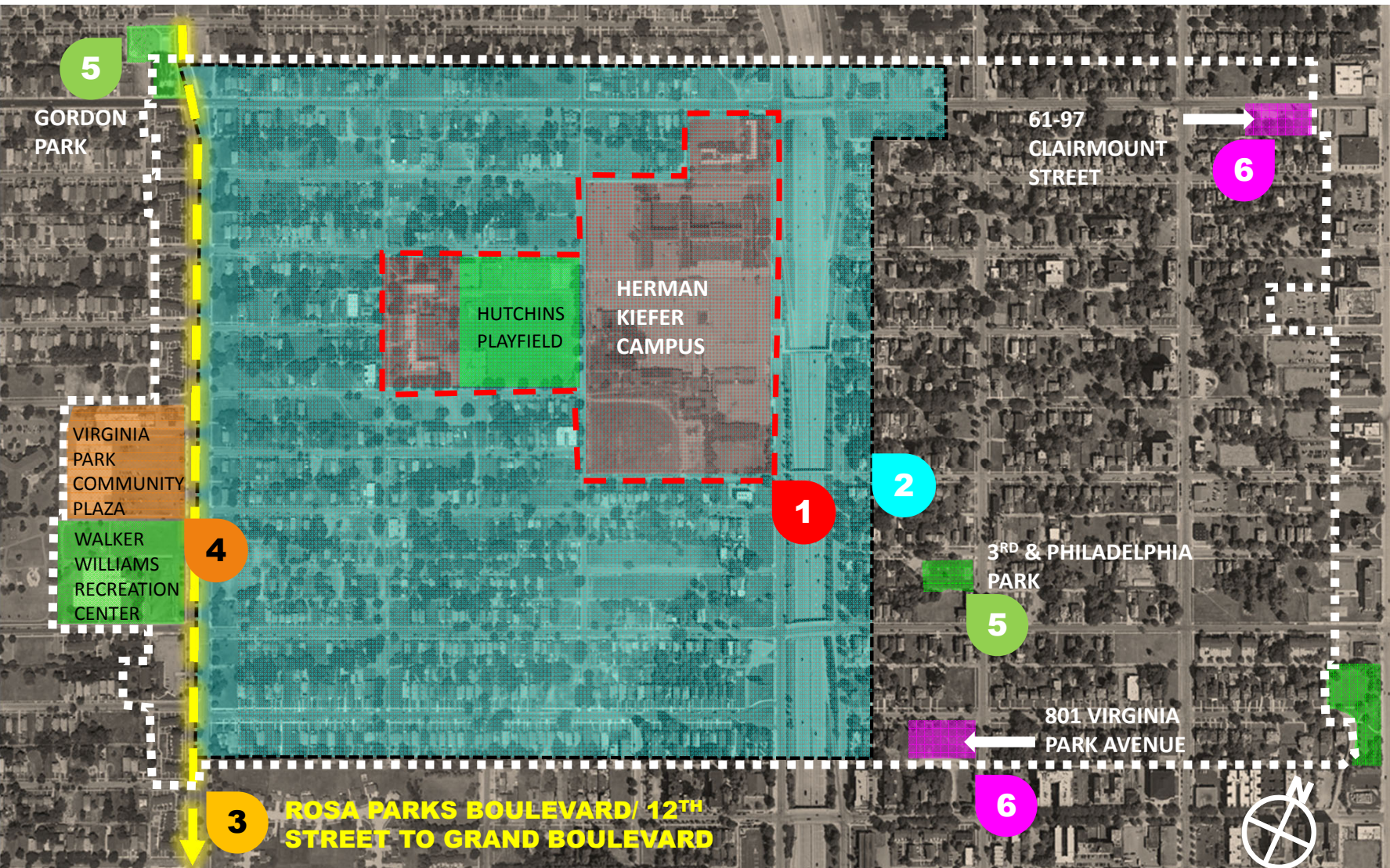
SURROUNDING INVESTMENTS

HERMAN KIEFER UPDATE



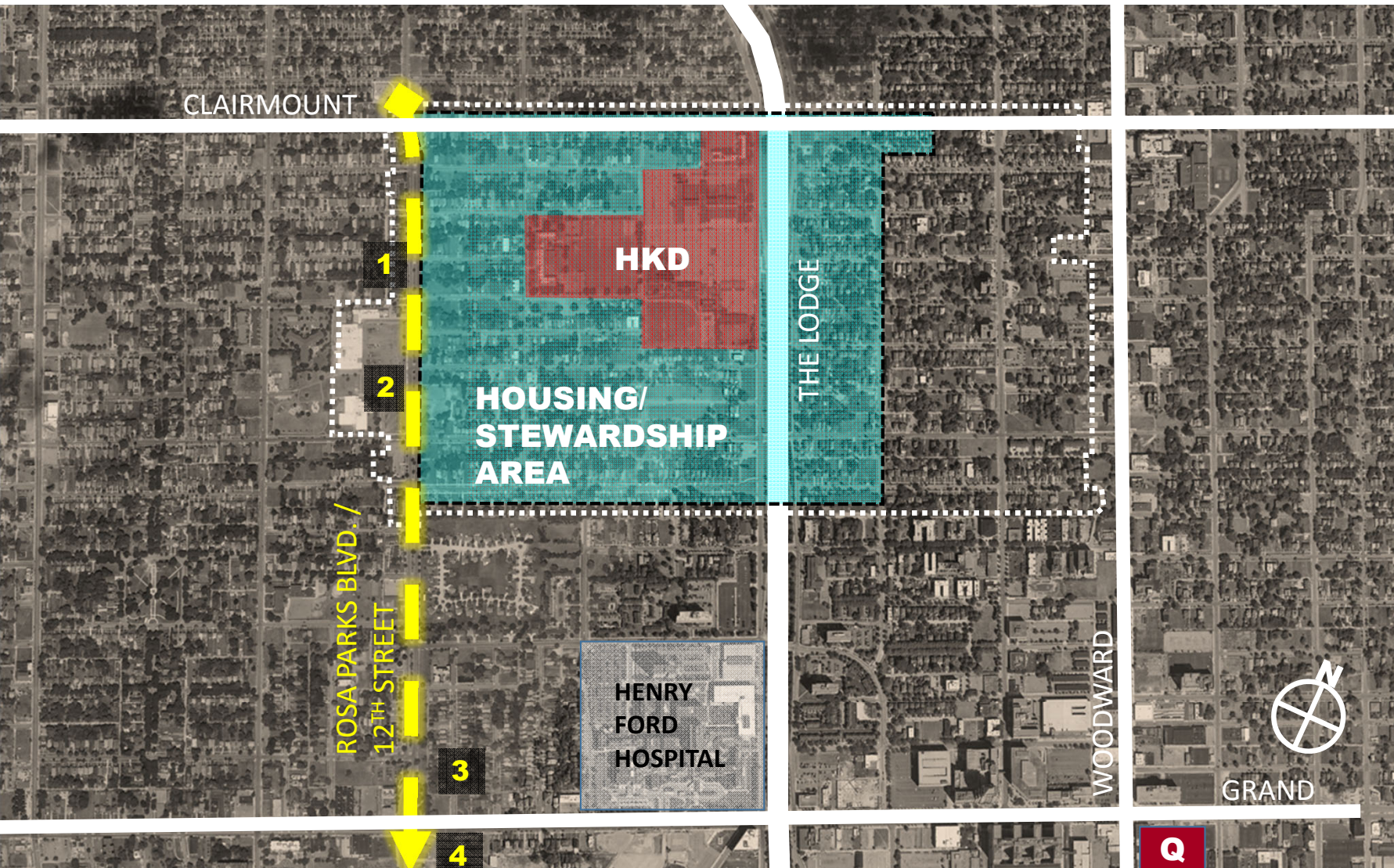
ROSA PARKS/ CLAIRMOUNT

HERMAN KIEFER DEVELOPMENT



- 1**
- HERMAN KIEFER CAMPUS**
- 2**
- HOUSING & LAND STEWARDSHIP**
- 3**
- ROSA PARKS BLVD/ 12TH STREET BOND**
- 4**
- COMMUNITY PLAZA & PROMENADE**
- 5**
- PARKS & RECREATION**
- 6**
- OPPORTUNITY SITES**

ROSA PARKS/ CLAIRMOUNT NEIGHBORHOOD FRAMEWORK PLAN



3

**ROSA PARKS BLVD/
12TH STREET BOND**

- 1. STREETSCAPE IMPROVEMENTS**
- 2. PINGREE CROSSING**
- 3. GRAND BLVD INTERSECTION IMPROVEMENTS**
- 4. 2-WAY CONVERSION & BIKE LANES TO MICHIGAN AVE.**
- 5. DESIGN - 2019**
- 6. CONSTRUCTION - 2020**

**TOTAL
\$3.3M**

ROSA PARKS/ CLAIRMOUNT

ROSA PARKS BLVD/ 12TH STREET BOND





**ROSA PARKS BLVD/
GRAND BLVD**



**CLOSE NORTH-
BOUND SECTION
OF ROSA PARKS,
EXTENDING MLK
PLAZA PARK**

**REDESIGN
INTERSECTION AT
GRAND BLVD**

**ADD BIKELANES
AND 2-WAY
STREET
CONVERSION**

**12TH ST. BRANDING
& SIGNAGE**

**ENHANCED
CROSSWALK**

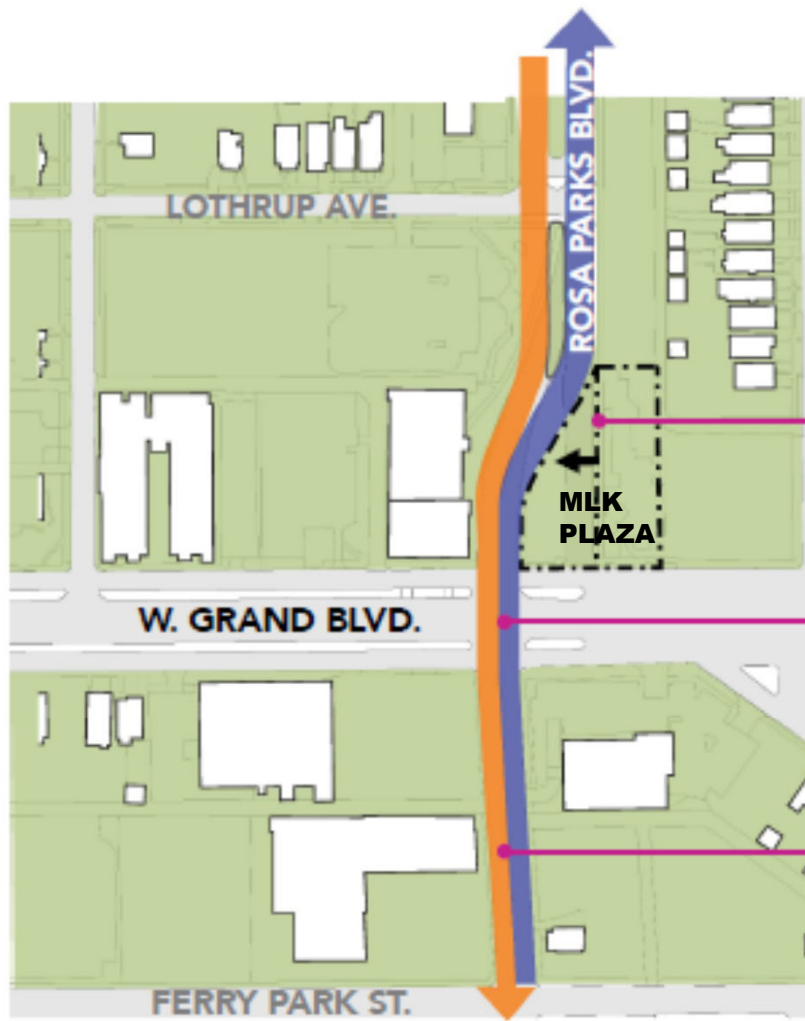
ROSA PARKS/ CLAIMOUNT

ROSA PARKS BLVD/ 12TH STREET BOND

**1
MILE**



EXISTING: North – South Traffic Pattern



PROPOSED: Reconfigured Traffic Pattern

**ROSA PARKS BLVD/
GRAND BLVD
INTERSECTION**

**CLOSE NORTH-
BOUND ROSA
PARKS**

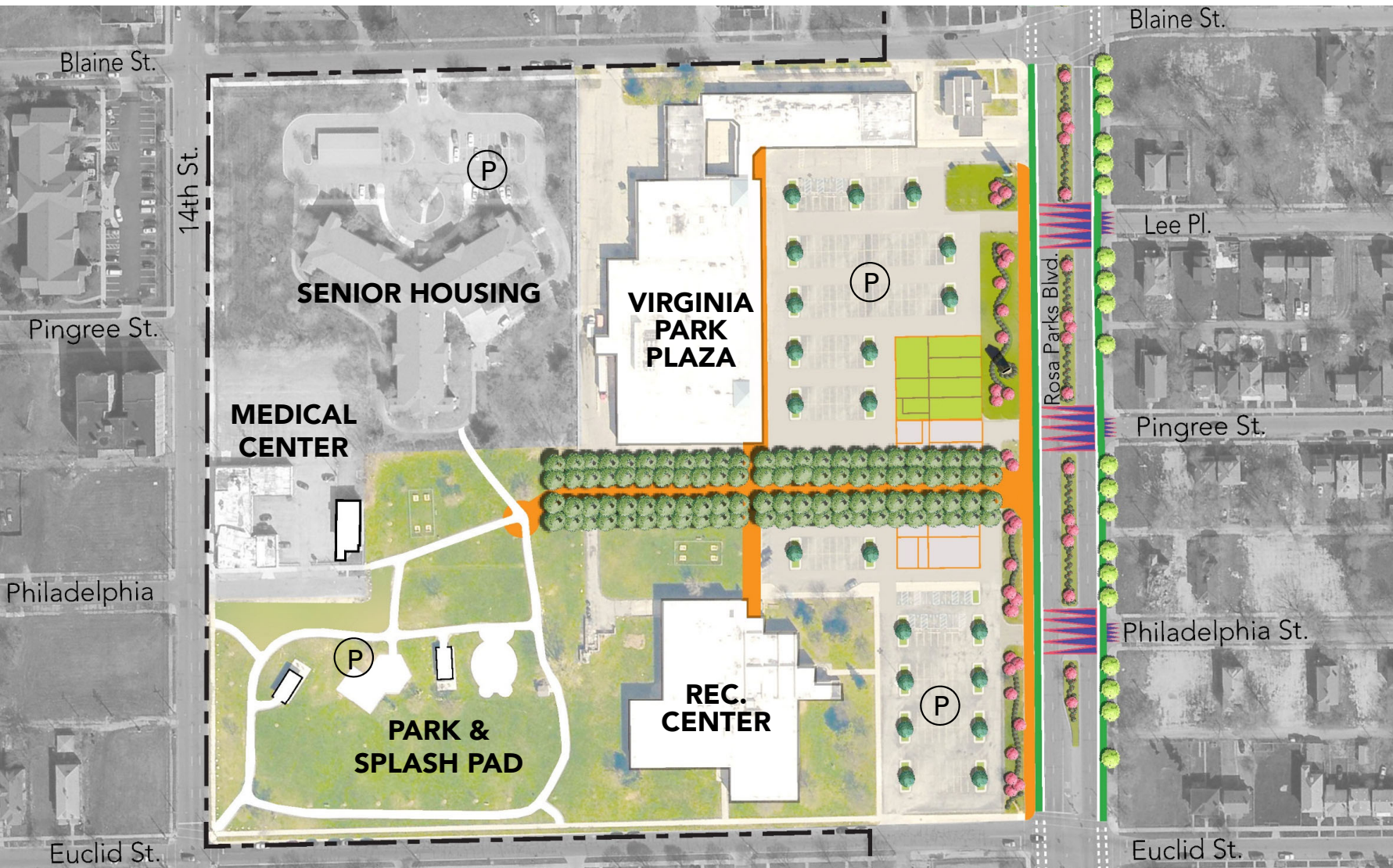
**REDESIGN
INTERSECTION**

**TWO-WAY STREET
CONVERSION AND
BIKELANES TO
MICHIGAN
AVENUE- TO BE
DETERMINED**

**3.5
MILES**

ROSA PARKS/ CLAIMOUNT

ROSA PARKS BLVD/ 12TH STREET BOND



**VIRGINIA PARK
COMMUNITY PLAZA
& PROMENADE**

**STABILIZE PLAZA
WITH ROOF
REPAIR,
GREENLIGHT**

**REDESIGN
INTERSECTION**

**SHADED
PROMENADE
CONNECTION
FROM 12TH
STREET TO PLAZA**

**DESIGN &
CONSTRUCTION-
2019-2020**

ROSA PARKS/ CLAIMOUNT VIRGINIA PARK COMMUNITY PLAZA

\$ 500K

VIRGINIA PARK PLAZA PROMENADE



ROSA PARKS/ CLAIRMOUNT

NEIGHBORHOOD FRAMEWORK UPDATE