



CORKTOWN COLLABORATIVE

GREATER CORKTOWN NEIGHBORHOOD FRAMEWORK PLAN



DAN KINKEAD

WHO WE ARE



Jessica Cure Moore

Chanté Mahouana 'Hicks'
1969-2014

Sabrina Nelson
2018

WE ARE NATIONAL



WE ARE NATIONAL

THE WHARF | WASHINGTON, DC



pitched in

HYATT house

Celebrate Post-Tan

MEET SMOOT on the PATIO H BAR 5-11 PM

WE ARE NATIONAL

CIVIC CENTER MASTER PLAN | SUNNYVALE, CALIFORNIA



WE ARE NATIONAL

NON-MOTORIZED MOBILITY PLAN | CHICAGO, ILLINOIS



WE ARE NATIONAL

CITY OF MILWAUKEE | TRANSIT-ORIENTED DEVELOPMENT & AFFORDABILITY STRATEGY



WE ARE INTERNATIONAL

INNOVATION ENERGY CITY PLANNING, HANGZHOU, ZHEJIANG, CHINA



WE ARE INTERNATIONAL

WORLD BANK | URBAN DEVELOPMENT STRATEGY

LEVERAGING URBANIZATION IN SOUTH ASIA

MANAGING SPATIAL TRANSFORMATION FOR PROSPERITY AND LIVABILITY

South Asia's urban population is poised to grow by almost 250 million people by 2030. If recent history is any guide, this increase could propel the region toward greater economic growth and prosperity. Between 2000 and 2011 the region's urban population expanded by 130 million—more than the entire population of Japan. The growth benefits associated with urbanization also increased. South Asia made good strides in achieving greater prosperity, with the increase in productivity linked to the growing number of people living in the region's towns and cities. Average GDP per capita in the region grew by almost 56 percent during 2000–2012, from \$2,560 to \$4,000, for average annual growth of more than 3.8 percent.¹ At the same time, absolute poverty declined from one in two people living on less than \$1.25 a day in 1999 to less than one in three in 2010. Urbanization thus presents South Asian countries with an opportunity to transform their economies and join the ranks of richer countries in both prosperity and livability.

South Asia can gain from urbanization by fostering productivity through the agglomeration of both people and enterprises in its towns and cities. One shortcoming, however, has been the inadequate provision of infrastructure and basic urban services. Two others are insufficient housing and a failure to deal with pollution. A key characteristic of urbanization is that agglomeration economies, which are the unintended benefits that firms and workers experience from one another as they cluster together,² improve productivity and spur job creation, specifically in manufacturing and services. In South Asia, this process is clearly visible in the structural transformation of the region's economy, with manufacturing and services now accounting for more than 80 percent of GDP.

In the long term, successful urbanization is accompanied by the convergence of living standards between urban and rural areas as economic and social benefits spill beyond urban boundaries. But these positive trends can be undermined by the pressures of urban population growth on infrastructure, basic services, land, housing, and the environment. Estimates suggest that at least 130 million of South Asia's urban residents live in slums and are disproportionately deprived of basic infrastructure and access to basic services.

56%
Growth in regional GDP per capita

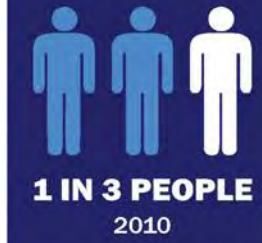
Decline in absolute poverty



1 IN 2 PEOPLE
1999

80%

of South Asia's GDP is associated with Manufacturing and Services



CURRENT AND PREDICTED SOUTH ASIA'S URBAN POPULATION INCREASE



CURRENT GROWTH: 130 MILLION (2000–2011)



PROJECTED GROWTH: 250 MILLION (2015–2030)

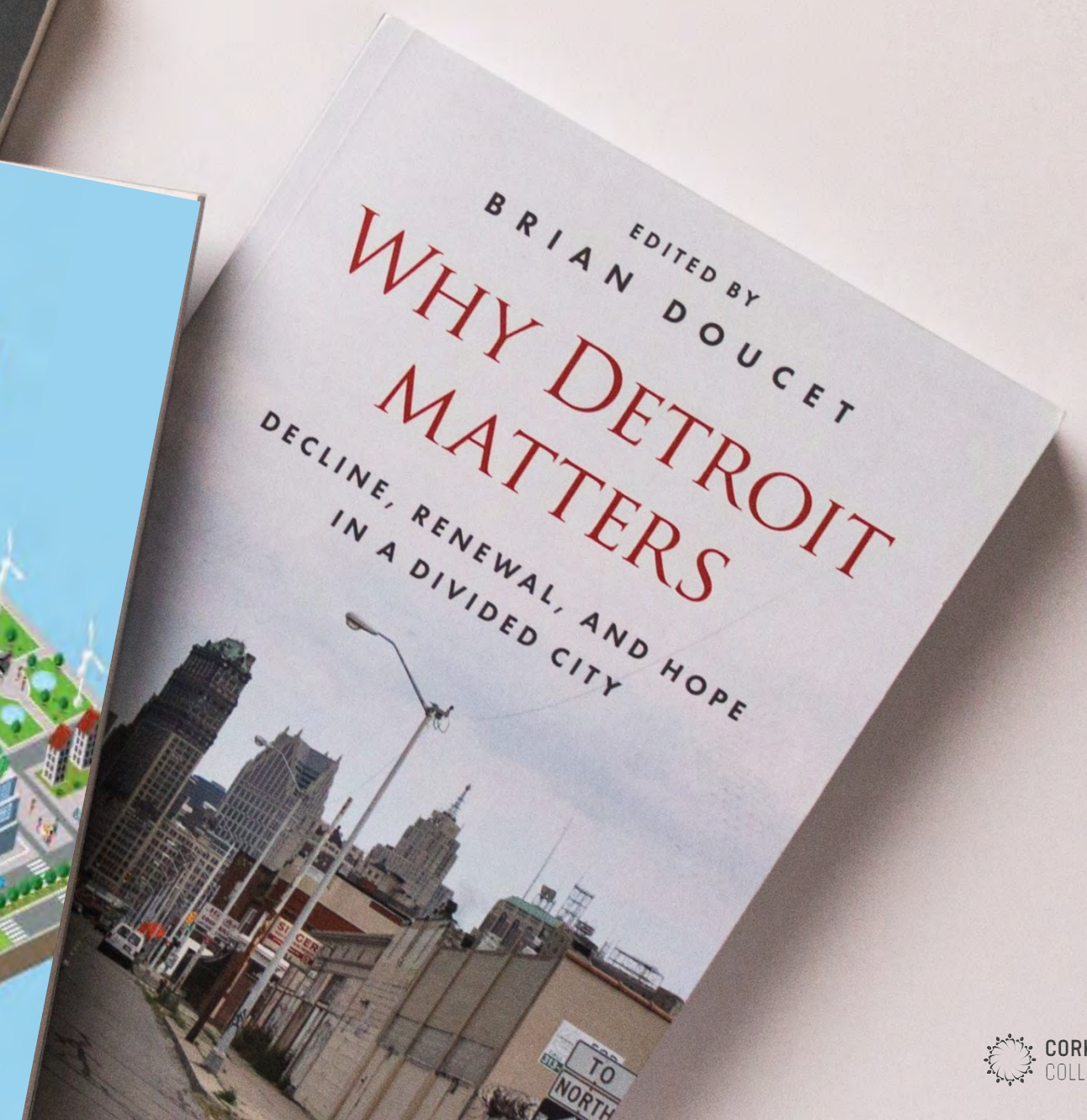
WE ARE INTERNATIONAL

US STATE DEPARTMENT | UKRAINE URBAN REDEVELOPMENT AND INDUSTRIAL ADAPTIVE REUSE



WE ARE WRITERS

RESEARCH AND PUBLICATIONS



WE ARE THOUGHT LEADERS

JAY PITTER | RESILIENT TORONTO



RESILIENT TORONTO
PART 2: CREATING INCLUSIVE, CLIMATE-RESILIENT GROWTH
INTERACTIVE PANEL SESSION

#ResilientStory #ResilientTO @ResilientTO @CANURB @TorontoLibrary

ON CIVIL SOCIETY
National Forum
191.500.2000

Logos for various partners including the University of Toronto and the City of Toronto.



CANADIAN URBAN INSTITUTE

From Research to Building for healthy communities

www.cui.ca



WE ARE THOUGHT LEADERS

AMERICAN SOCIETY OF LANDSCAPE ARCHITECTS | DISRUPTIVE TRANSPORT



WE ARE INFORMED

NATIONAL AND INTERNATIONAL ADAPTIVE REUSE TRENDS



Powell Steam Plant
Birmingham, AL



Ingenuity Fest
Cleveland, Ohio



Seaholm
Austin, TX



Navy Yard
Philadelphia, PA



Gas Works Park
Seattle, Washington



Dubuque Riverfront
Dubuque, IA



Holzmarkt
Berlin, Germany



SteelStacks
Bethlehem, PA



Beloit Powerhouse
Beloit, WI



Gold Medal Park
Minneapolis, MN



Ghirardelli Square
San Francisco, CA



Rheinpark
Duisburg, Germany



Duisburg-Nord Landscape Park
Duisburg, Germany



Hazelwood Green
Pittsburgh, PA



Zollverein
Essen, Germany



RDM
Rotterdam, Netherlands



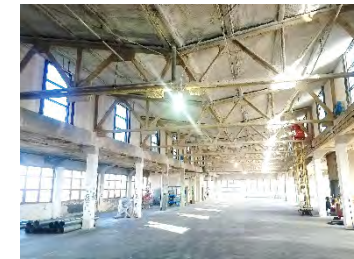
Kraftwerk
Berlin, Germany



Manufaktura
Lodz, Poland



Energy Innovation Center
Pittsburgh, PA



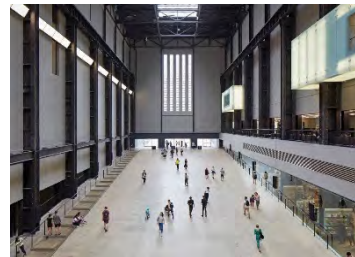
7800 Susquehanna
Pittsburgh, PA



Lawrenceville Tech Center
Pittsburgh, PA



Keystone Commons
Pittsburgh, PA



Tate Modern
London, UK



De Ceugel
Amsterdam, Netherlands



IBA Emscher Park
Emscher, Germany



Lingotto
Torino, Italy



Battersea
London, UK



IBA Hamburg
Hamburg, Germany

WE ARE LOCAL

WE'VE PLANNED WITH YOU



A CITY OF MULTIPLE EMPLOYMENT DISTRICTS

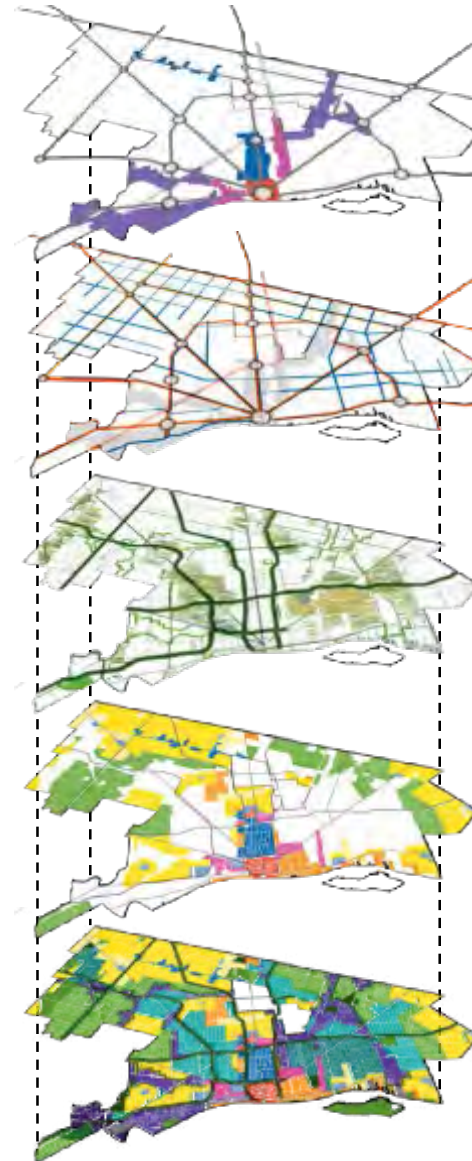
A CITY CONNECTING PEOPLE TO OPPORTUNITY

A GREEN CITY WHERE LANDSCAPES CONTRIBUTE TO HEALTH

A CITY OF DISTINCT, ATTRACTIVE NEIGHBORHOODS

50 YEAR LAND USE VISION

The four transformative ideas provide the basis for the future land use vision.



DETROIT FUTURE CITY

Developed to formulate strategic decision-making tools through research, analysis, and engagement
integrated community insight with objective analyses and planning.



WE ARE LOCAL

WE'VE TRANSFORMED LIABILITIES...



WE ARE LOCAL

...INTO ASSETS



WE ARE LOCAL

WE'VE RECONSIDERED HOW WE GUIDE INVESTMENT AND DEVELOPMENT

DETROIT DESIGN 139

DETROIT DESIGN 139 presents a UNESCO City of Design bi-annual exposition that will showcase relevant projects being completed in the City of Detroit. Structured around the targeted neighborhood frameworks identified by the City of Detroit Planning Department, the expo will establish a collective city-wide vision for innovative land-use planning, green infrastructure, creative reuse of existing buildings and architectural design excellence for all of Detroit's 139 square miles.

For thirty days in September and October, the DETROIT DESIGN 139 exposition will be headquartered in a 'storefront' at 1001 Woodward Avenue, centrally locating a coordinated series of design advocacy initiatives that will include an exhibition, lectures, events, and tours. Providing an open, inviting 'storefront' for this collection of design initiatives will ensure that all of Detroit's communities impacted by these projects are integral to the conversation and ultimately drive future design outcomes.

The DETROIT DESIGN 139 exposition will channel the experience of local, national and international professionals towards resolving current city-wide challenges and identifying future opportunities, with the underlying objective of establishing Detroit as a destination for world-class, design excellence.

MIX-TAPE ZONING

A Zoning Handbook for Detroit's Commercial Corridor

Detroit Design 139 is an architecture advocacy platform that promotes thought-leadership design initiatives focusing on Detroit's future built and natural environment. As organized by the City of Detroit and Bedrock, the Detroit Design 139 collaborative is the advisory board currently comprised of members from the City of Detroit Planning Department, Bedrock, University of Michigan Taubman School of Architecture, AIA Detroit, Detroit Creative Corridor Center, University of Detroit School of Architecture, and the Detroit Riverfront Conservancy.

DRAFT AUG 22 2017

MIX-TAPE ZONING

A Zoning Handbook for Detroit's Commercial Corridor



...re advocacy platform that... promotes thought-leadership design initiatives... on Detroit's future built and natural environment. As organized by the City of Detroit and Bedrock, the Detroit Design 139 collaborative is the advisory board currently comprised of members from the City of Detroit Planning Department, Bedrock, University of Michigan Taubman School of Architecture, AIA Detroit, Detroit Creative Corridor Center, University of Detroit School of Architecture, and the Detroit Riverfront Conservancy.

WE ARE LOCAL

WE'VE HELPED BUSINESSES BECOME INDISPENSABLE FACETS OUR COMMUNITY



Photo: Corktown Business Association

WE ARE LOCAL

WE'RE SHAPING A DYNAMIC DOWNTOWN DEVELOPMENT STRATEGY



DTE Energy

ENERGIZE
DETROIT

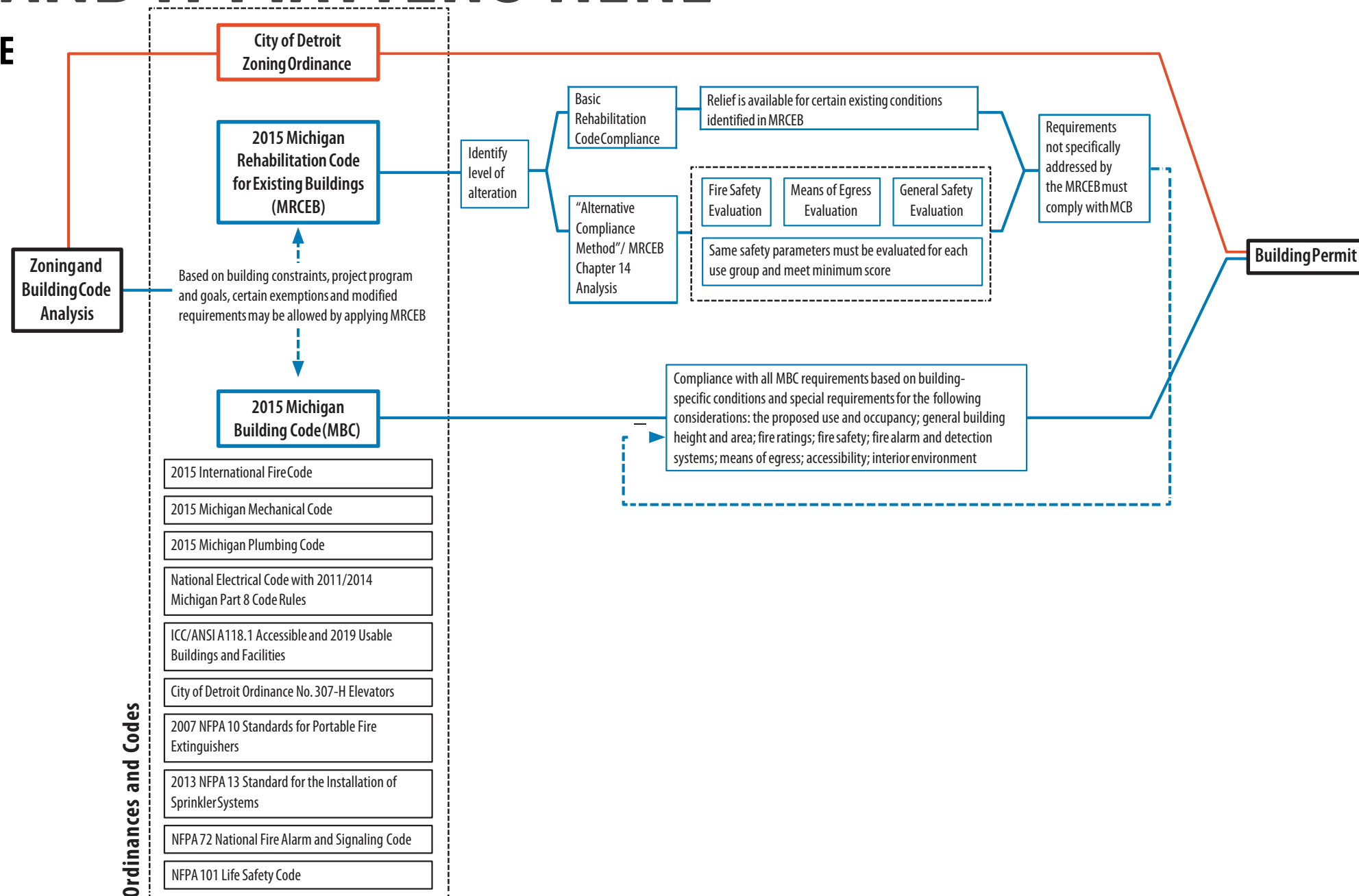
ENERGIZE
DETROIT

ENERGIZE
DETROIT

ENERGIZE
DETROIT

WE UNDERSTAND DETROIT'S DEVELOPMENT & REGULATORY PROCESS...AND IT MATTERS HERE

ZONING & BUILDING CODE



...AND WE CAN WALK HERE

CORKTOWN

SMITHGROUP

COLEMAN A. YOUNG
MUNICIPAL CENTER

WE UNDERSTAND CORKTOWN IS UNIQUE



free SHUTTLE SERVICE
BUS STOP 4
RUNS EVERY 30 MIN BETWEEN 12 & 5PM
Hop on & off McShane's buses throughout the day at any of the stops

3 2 1 7 6 5 4

WINDY CITY ROADSIDE
WINDY CITY PARK
WINDY CITY PLAZA
WINDY CITY SQUARE
WINDY CITY MARKET
WINDY CITY GARDENS
WINDY CITY TERRACE
WINDY CITY COURT
WINDY CITY DRIVE
WINDY CITY AVENUE
WINDY CITY BOULEVARD
WINDY CITY BLVD

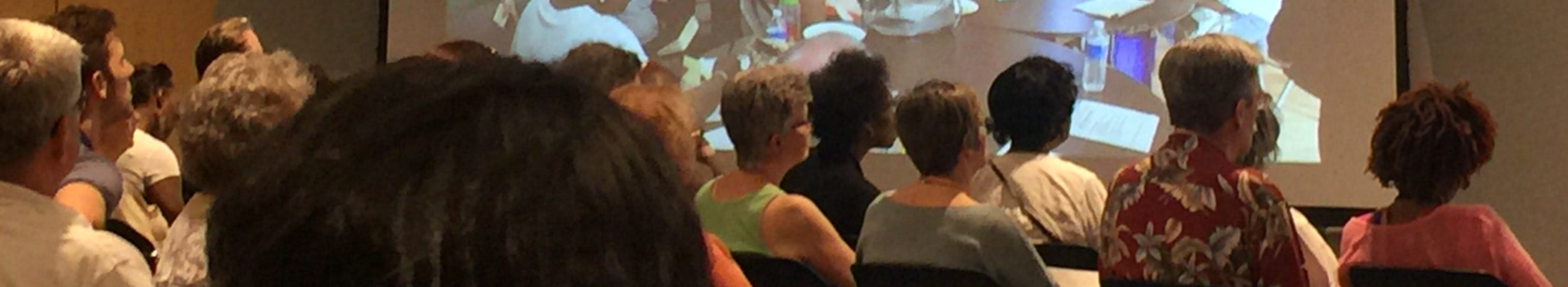
Photo: Corktown Business Association

WE KNOW OUR PAST, PRESENT & FUTURES CO-EXIST



WE KNOW THAT STRATEGY IS NOT ENOUGH

WE MUST DELIVER THOUGHTFUL ACTION





WE LIVE HERE





Photo: Corktown Business Association

WE PLAY HERE



WE GROW HERE

Photo: Corktown Business Association



Photo: Corktown Business Association

WE ENGAGE HERE



WE CELEBRATE HERE

Photo: Corktown Business Association

WE HAVE SHAPED AN INCLUSIVE TEAM



WE HAVE SHAPED AN INCLUSIVE TEAM



WE HAVE SHAPED AN INCLUSIVE TEAM



WE HAVE SHAPED AN INCLUSIVE TEAM



WE HAVE SHAPED AN INCLUSIVE TEAM



WE HAVE SHAPED AN INCLUSIVE TEAM



WE HAVE SHAPED AN INCLUSIVE TEAM



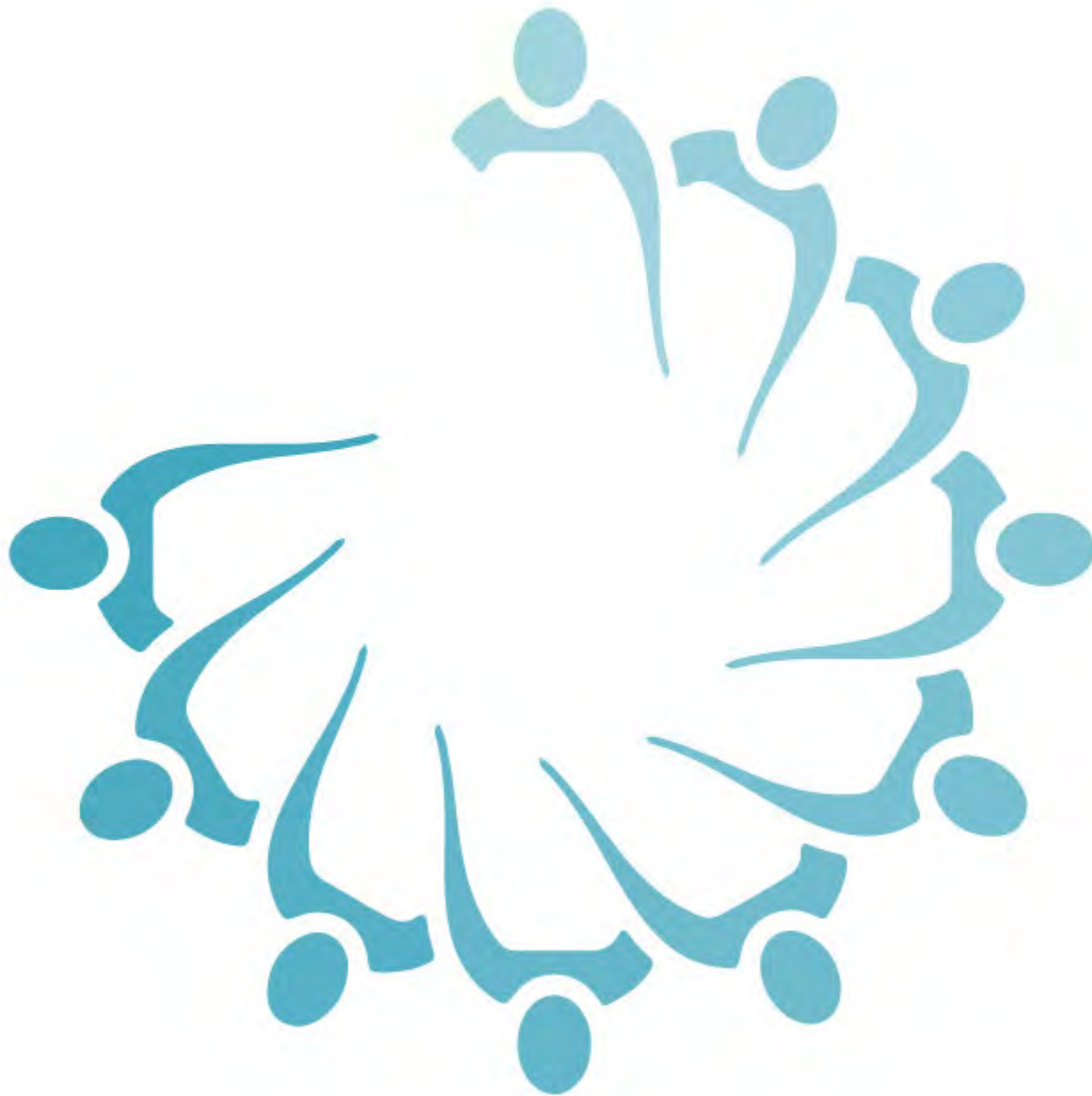
WE HAVE SHAPED AN INCLUSIVE TEAM



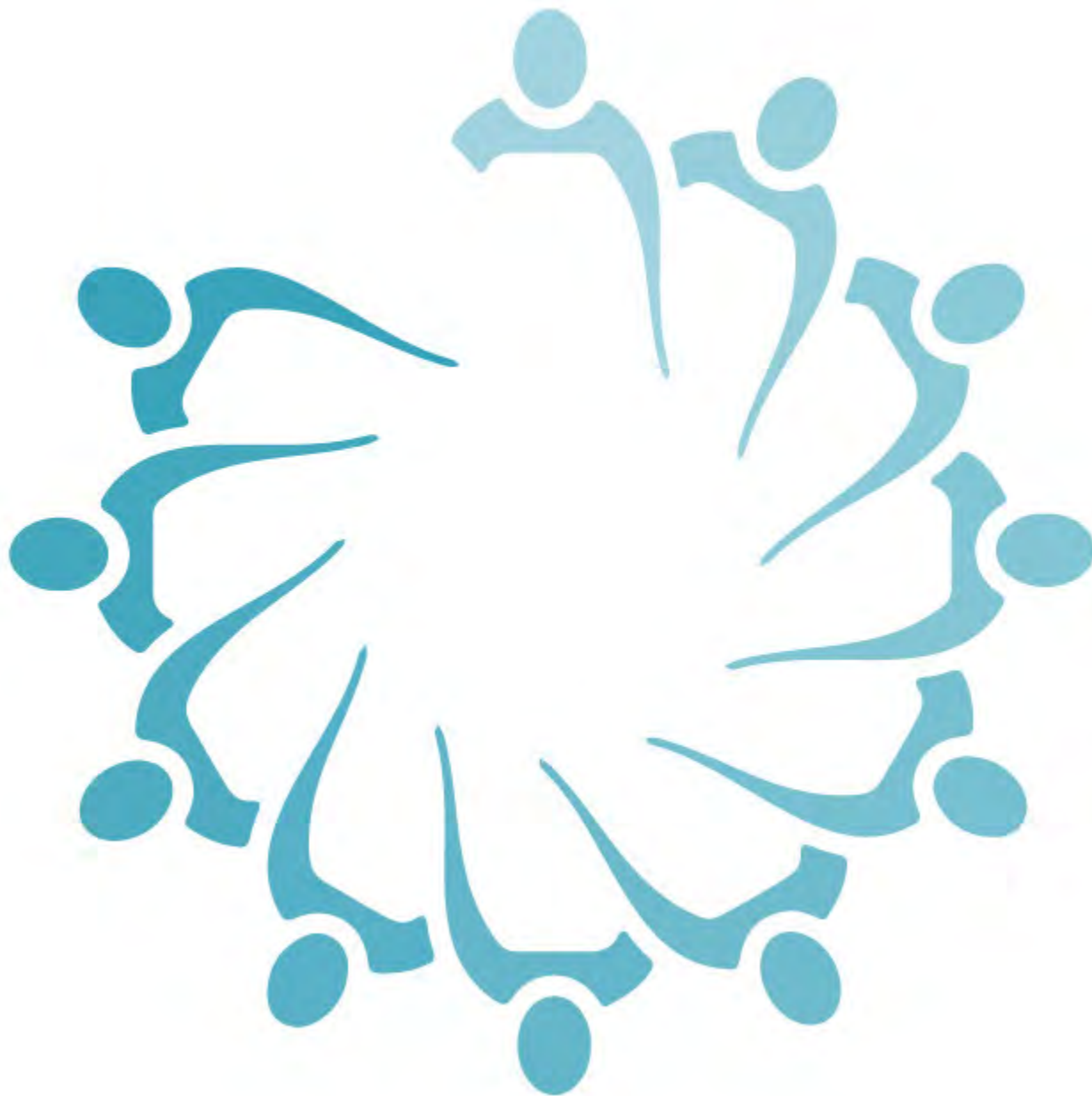
WE HAVE SHAPED AN INCLUSIVE TEAM



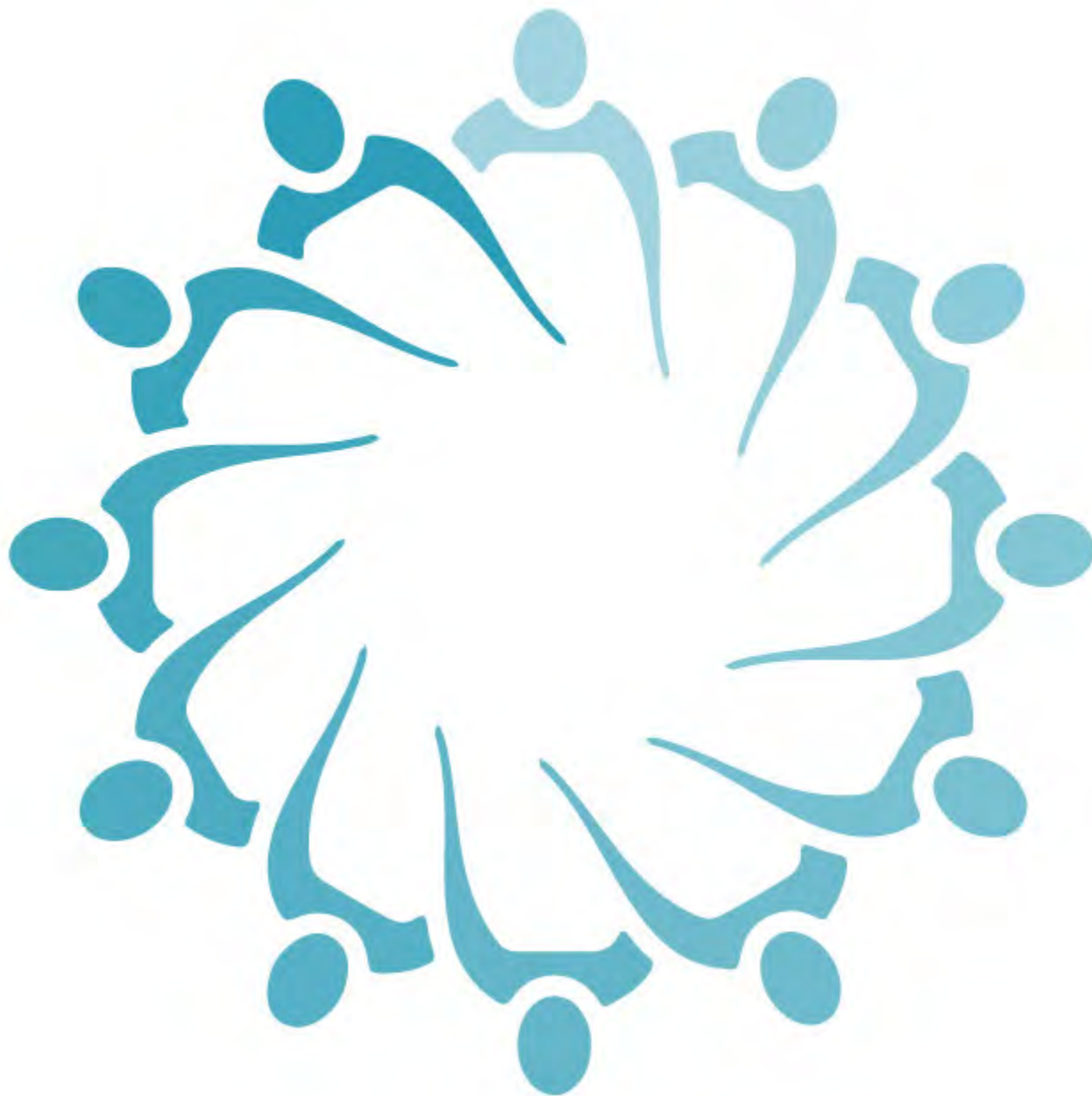
WE HAVE SHAPED AN INCLUSIVE TEAM



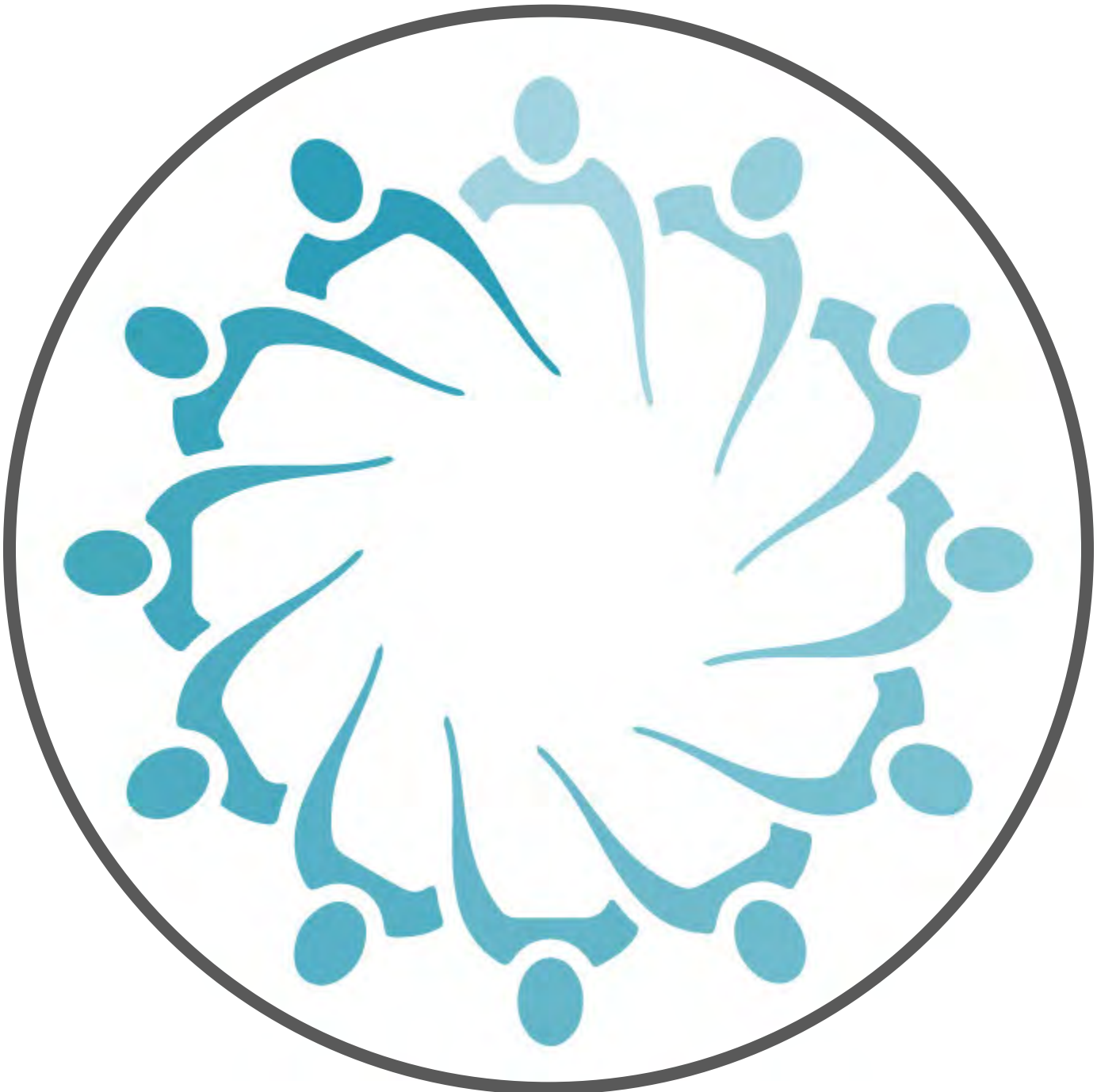
WE HAVE SHAPED AN INCLUSIVE TEAM



WE HAVE SHAPED AN INCLUSIVE TEAM



WE HAVE SHAPED AN INCLUSIVE TEAM



WE HAVE SHAPED AN INCLUSIVE TEAM



UJJIJI DAVIS

PUTTING THE WHEELS IN MOTION

ENGAGING THE COMMUNITY



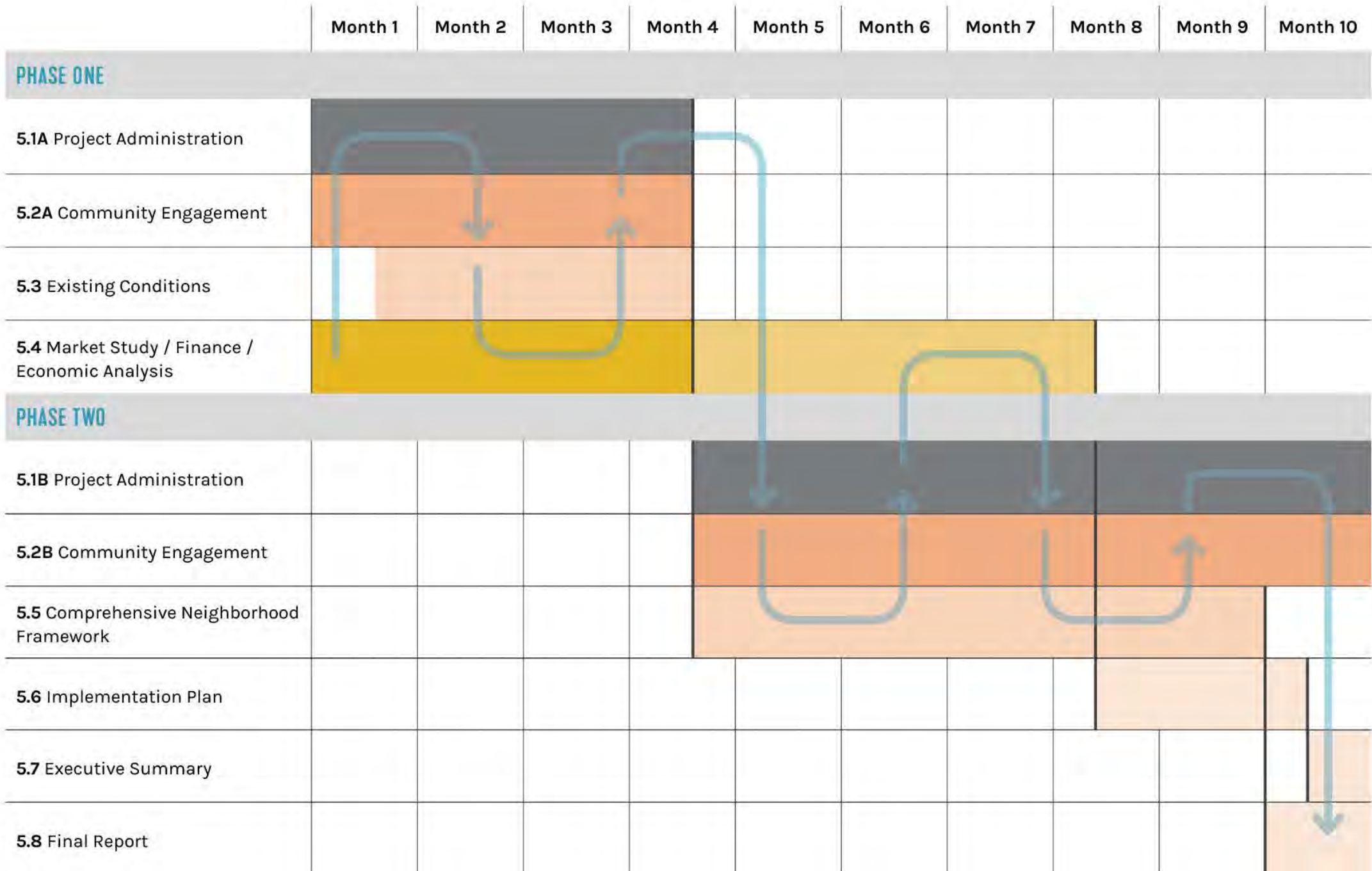
ENGAGING THE COMMUNITY



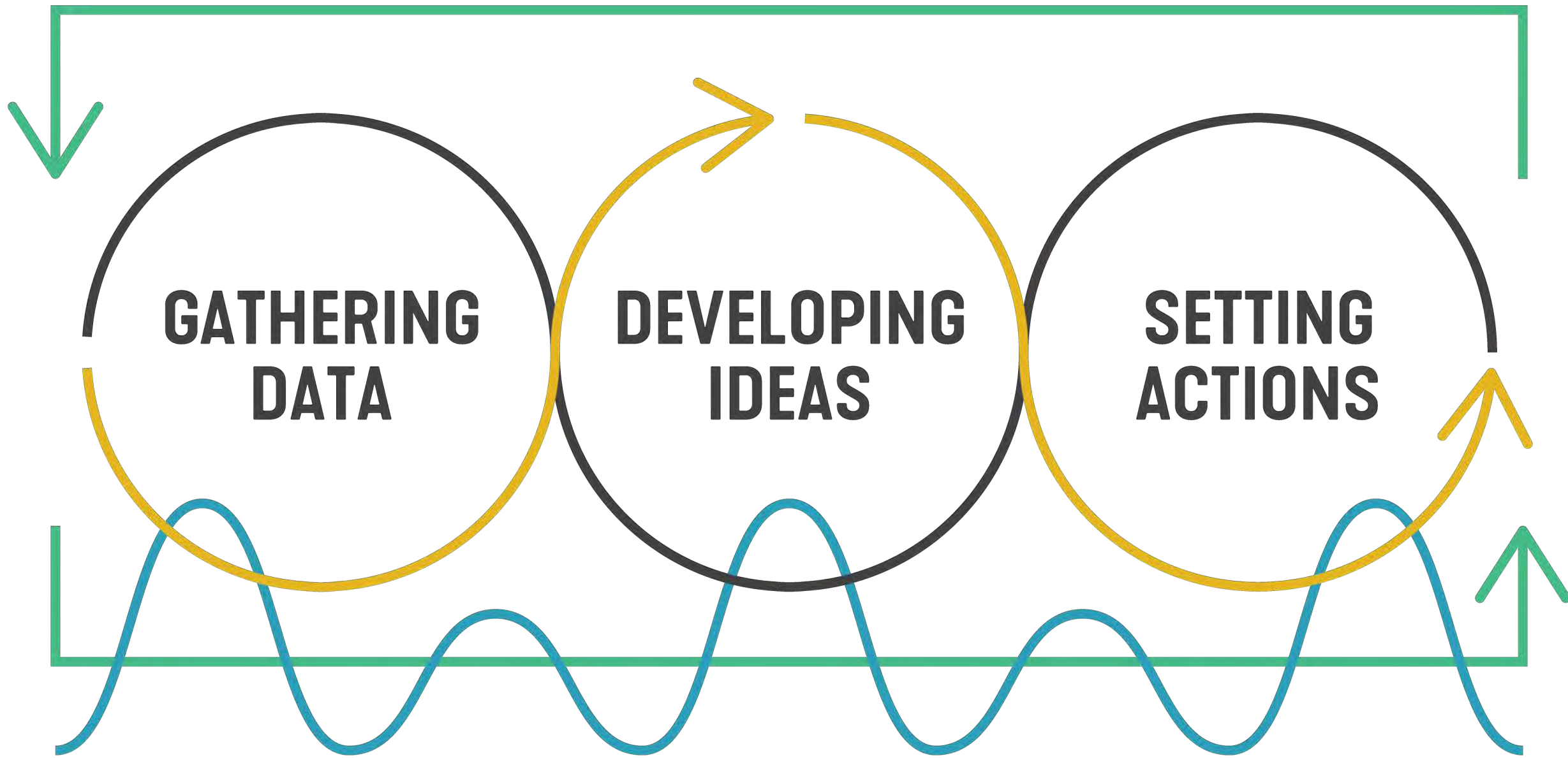
ENGAGING THE COMMUNITY



CHARGING FORWARD

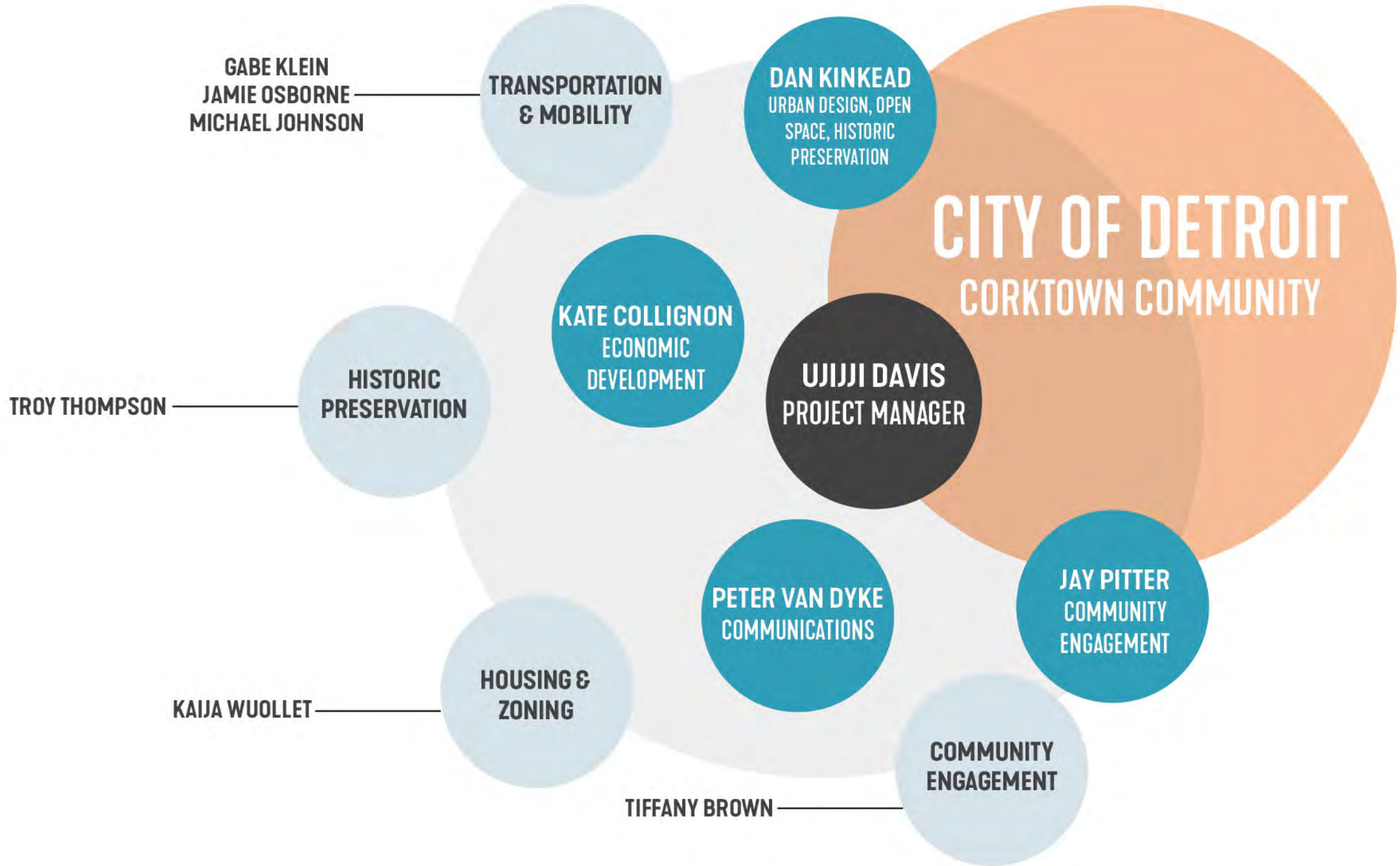


CHARGING FORWARD



COMMUNITY ENGAGEMENT

CHARGING FORWARD



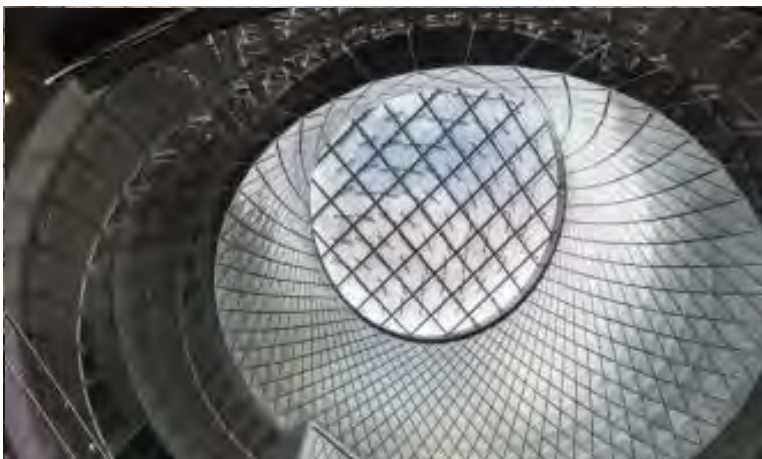
A photograph of three-story houses in Corktown, Detroit. The houses are painted in various colors: yellow with blue trim, purple with blue trim, and brown with yellow trim. They have gabled roofs and decorative window surrounds. A white picket fence is in the foreground. The sky is clear and blue.

KATE COLLIGNON

**DEVELOPMENT &
AFFORDABILITY**

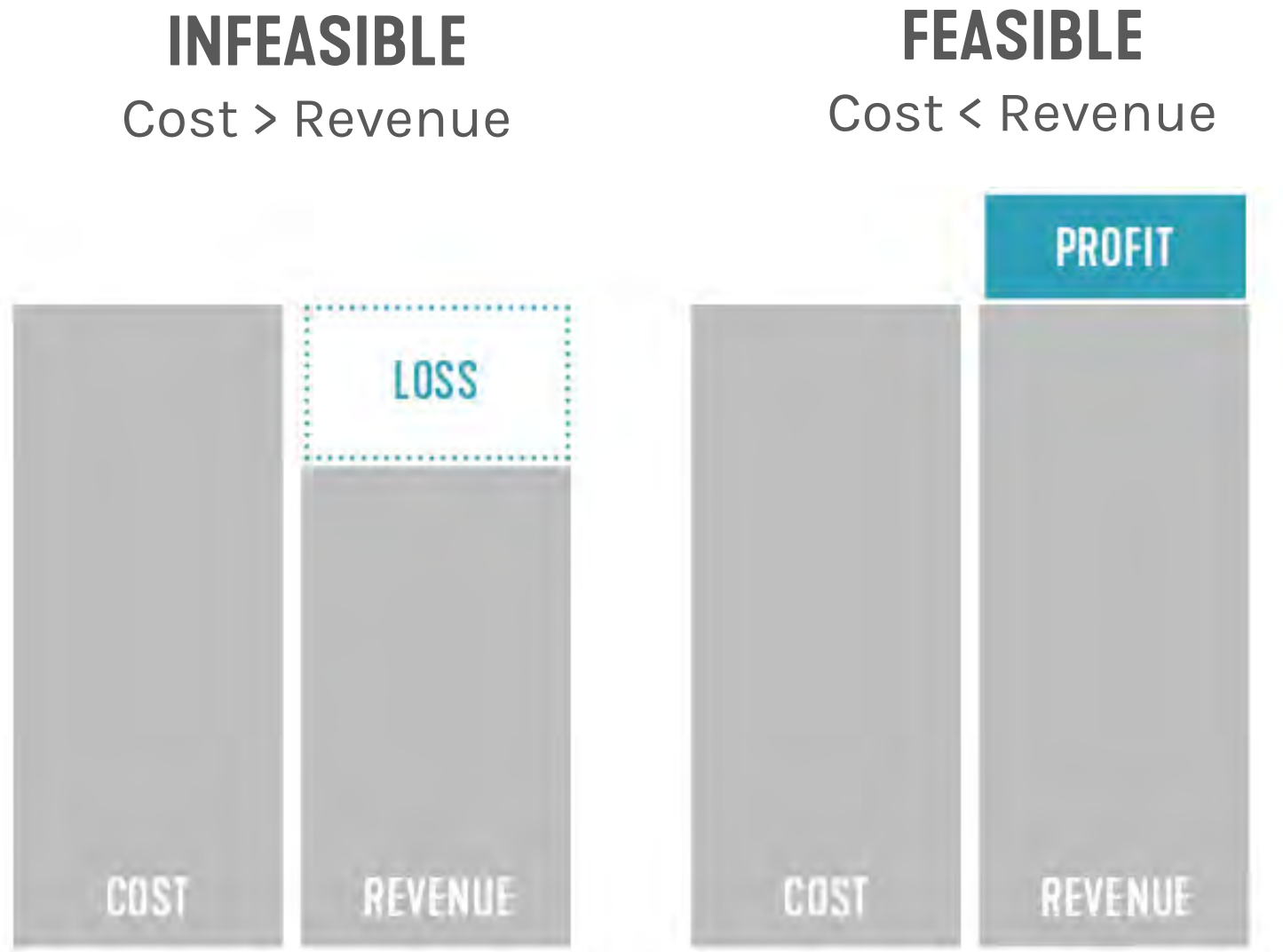
ABOUT HR&A

ECONOMIC DEVELOPMENT & REAL ESTATE CONSULTING



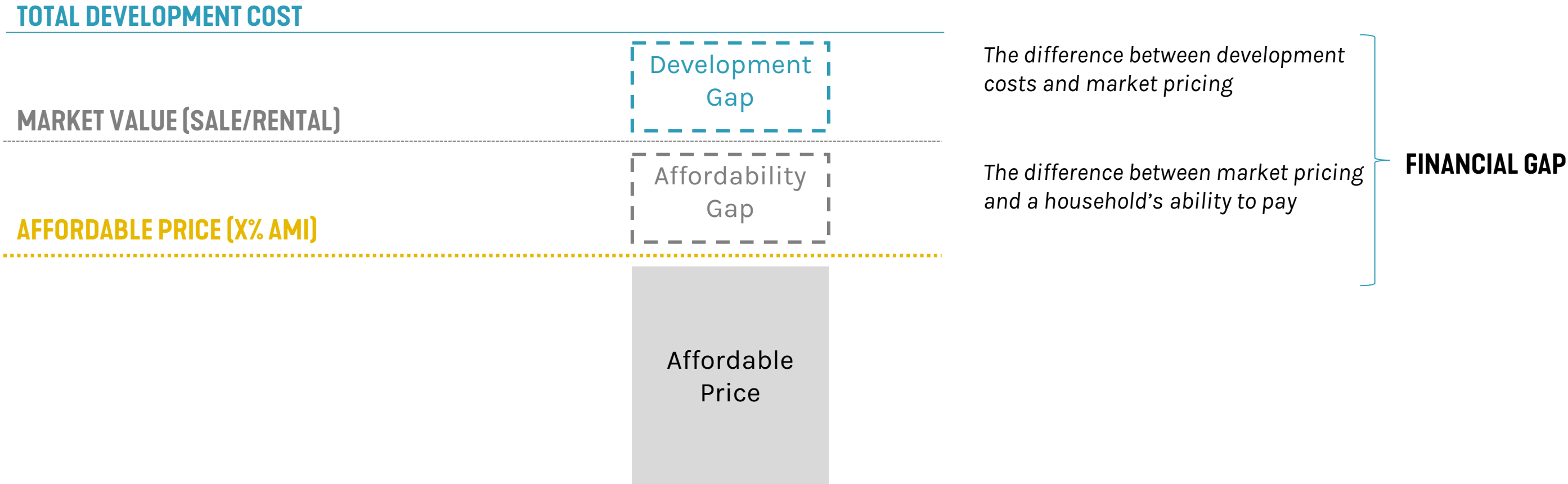
ABOUT HR&A

ECONOMIC DEVELOPMENT & REAL ESTATE CONSULTING



We develop strategies to shape and catalyze private investment that can achieve public goals using the fundamentals of economic development.

DEVELOPMENT VS. AFFORDABILITY GAP



We develop strategies to shape and catalyze private investment that can achieve public goals using the fundamentals of economic development.

CITY OF MILWAUKEE

TRANSIT-ORIENTED DEVELOPMENT & AFFORDABILITY STRATEGY



An aerial, high-angle view of a modern urban street scene. A yellow tram is moving along a dedicated track in the center. To its left, a green bus is stopped. The street is flanked by wide, paved sidewalks with many pedestrians walking. There are trees, modern buildings with large windows, and a yellow car parked on the right. The overall atmosphere is one of a vibrant, pedestrian-friendly city.

GABE KLEIN, JAMIE OSBORNE, MICHAEL JOHNSON

INNOVATIVE MOBILITY









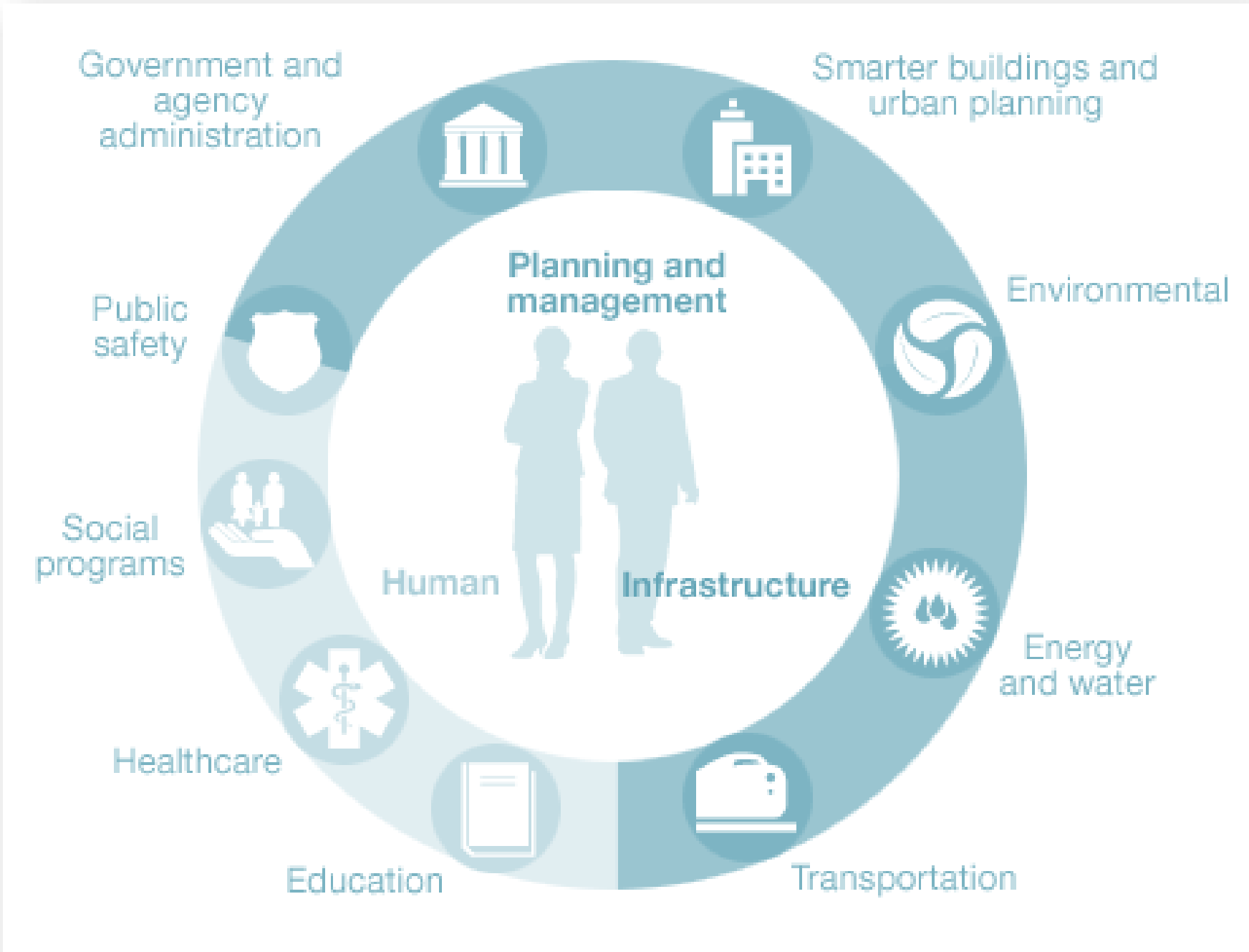


©2018 Google

©2018 Google

COORDINATING MOBILITY

It's Complicated...

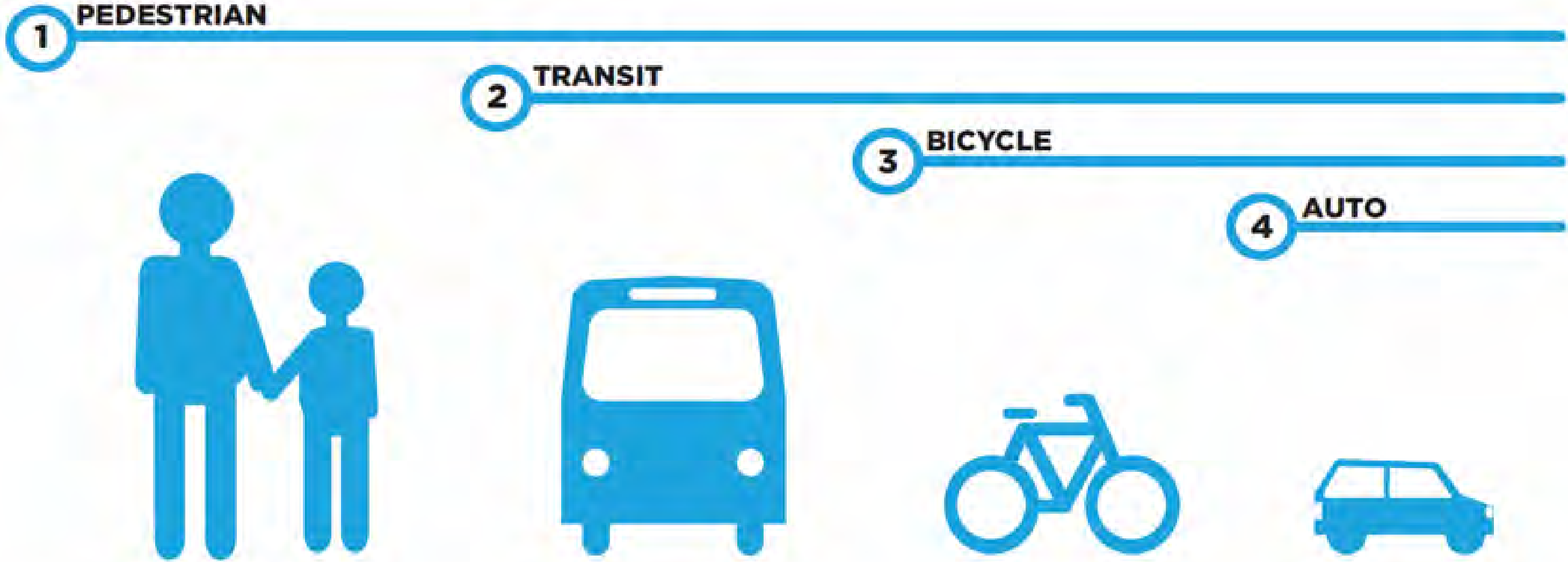


REDESIGN AROUND PEOPLE



COMPLETE STREETS POLICY, CHICAGO

PEOPLE COME FIRST



Chicago Pedestrian

Department of Transportation

Chicago Street Cycling Plan

Department of Transportation

Complete Streets Chicago

Department of Transportation

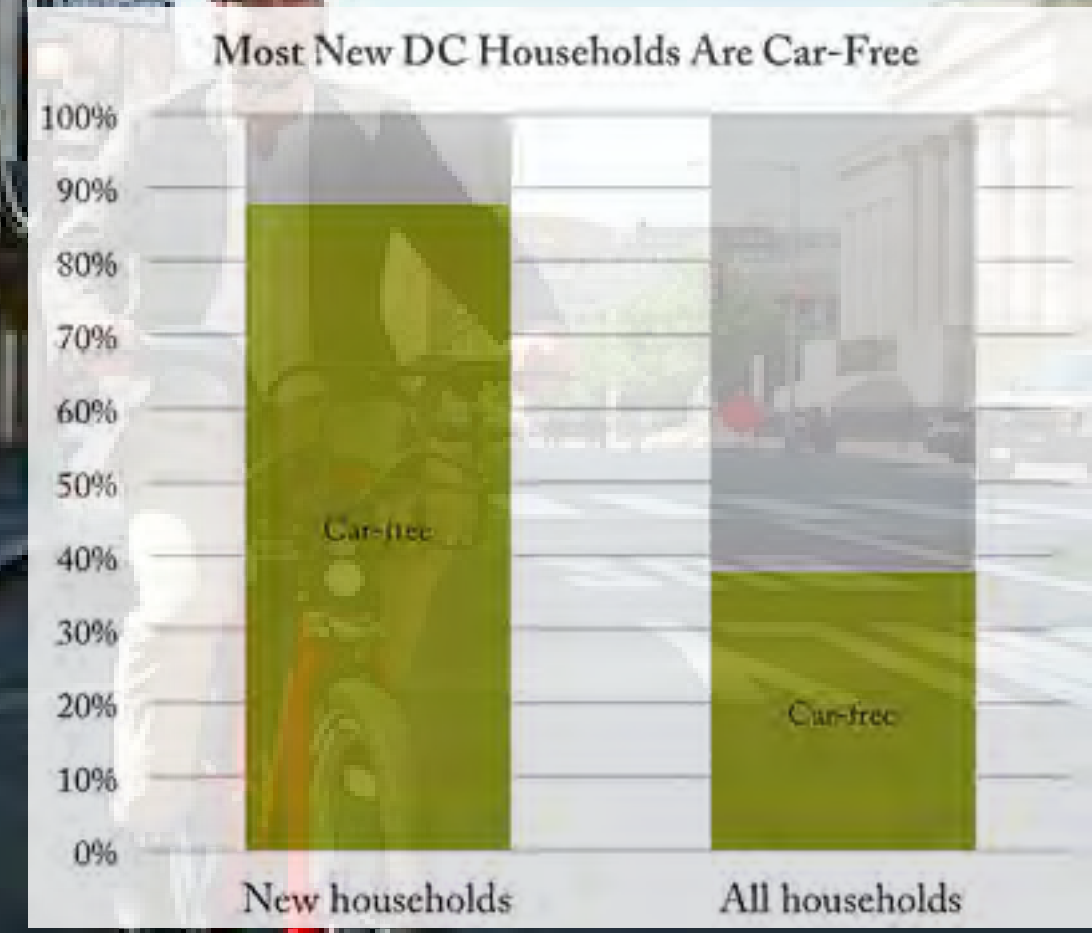
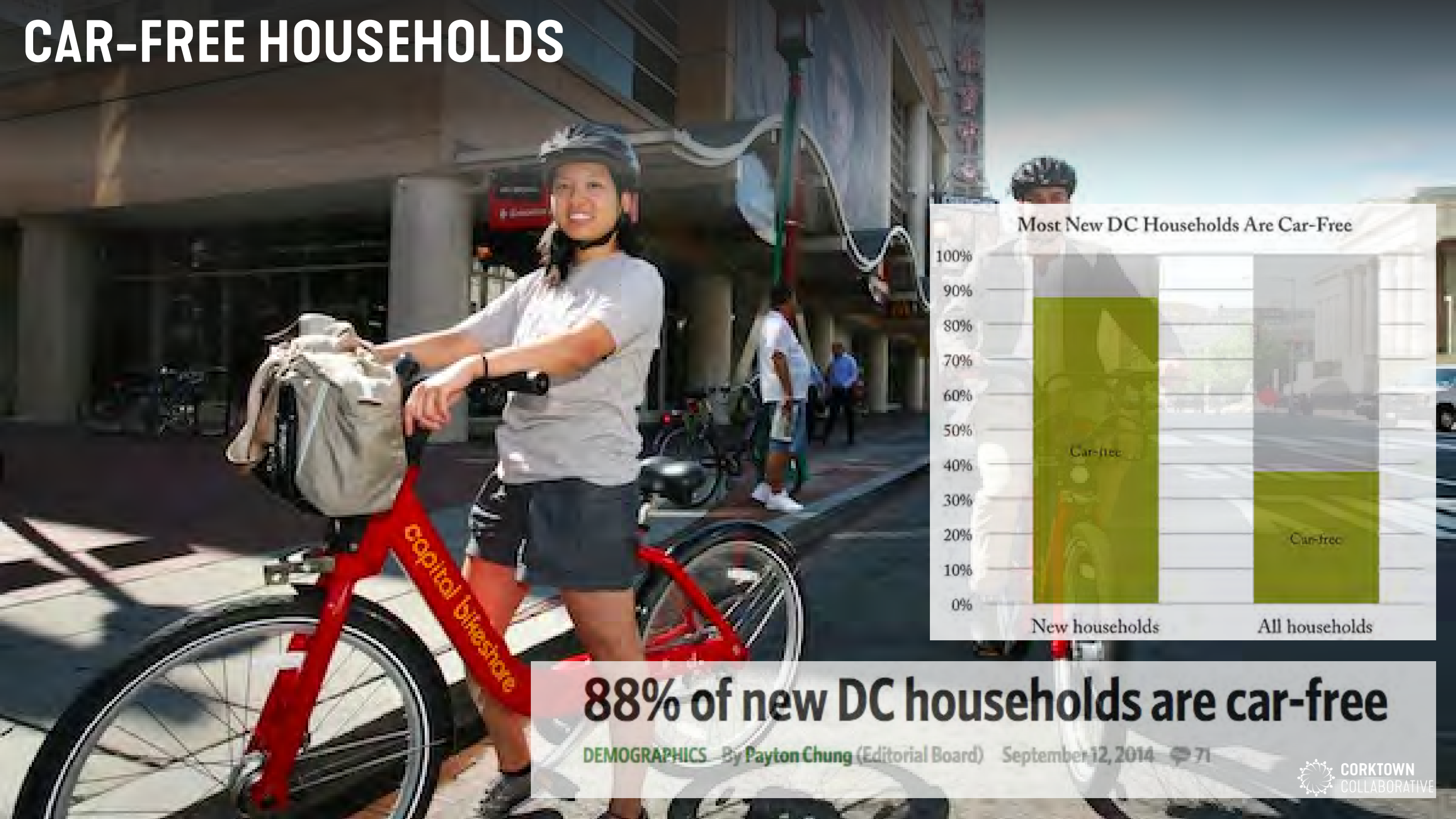


Design Guidelines

CHICAGO TOPS NYC AS MOST BIKE-FRIENDLY CITY IN US



CAR-FREE HOUSEHOLDS



88% of new DC households are car-free

DEMOGRAPHICS By Payton Chung (Editorial Board) September 12, 2014 71

OWNERSHIP? OR CONNECTION?



ACCESS

MOBILITY

PROXIMITY

CONNECTIVITY

-\$7 TRILLION/YR

CONNECTIVITY

MOBILITY = UPWARD MOBILITY

A PRIVILEGE? OR A RIGHT?



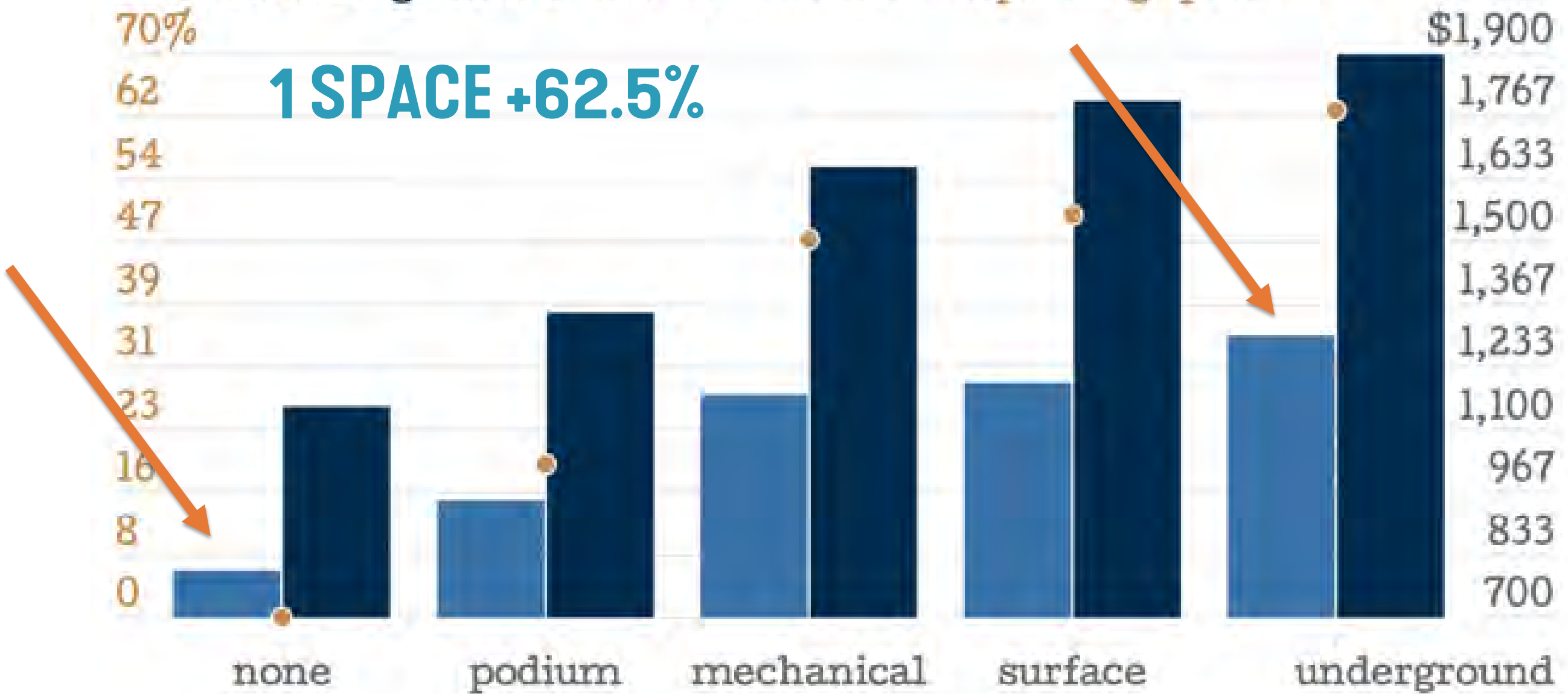
Universal Basic Mobility Is Coming. And It's Long Overdue

People need easy access to work and to essential services to live decent,

PARKING: THE EFFECT ON AFFORDABILITY

Housing Affordability Based on a Building's Parking Structure

■ low rent ■ high rent ■ rent increase over no parking option



Cost of Onsite Parking + Impacts on Affordability (2012)

LADOT'S CORE PRINCIPLES FOR TRANSPORTATION HAPPINESS



ACCESSIBILITY RELIABILITY SAFETY & COMFORT CULTURE & COMMUNITY EQUITY & TRANSPARENCY

Freedom to Get Around

I have the flexibility to select among safe, easy-to-understand, and universally-designed options to help me get to where I need to be in a timely manner.

Freedom from Disruptions

I can get where I need to go, when I need to go, with seamless infrastructure and responsive services, whether on my daily commute or on a spontaneous trip.

Freedom from Harm

I can enjoy my trip free from harassment and harm, using a safe, comfortable, and intuitive system.

Freedom to Connect

I feel connected to my neighborhood and can celebrate our city's cultural diversity and unique places.

Freedom from Exclusion

I can rely on LADOT to respect and empower communities through transparent decision-making and clear operations, to invest equitably, and to avoid disproportionate impact.

Do you have feedback on this document? Submit via email to ladot.innovation@lacity.org, or use the hashtag #TransportationHappiness or #TranspoHappiness on your favorite social media platform and tag @ladotofficial!







KAIJA WUOLLET, TROY THOMPSON

CONTEMPORARY & HISTORIC CORKTOWN

EMBRACING CORKTOWN'S HERITAGE

UNITED STATES NATIONAL REGISTER & DETROIT HISTORIC DISTRICT



IDENTITY PRESERVATION

We, the undersigned property owners and residents in the "Corktown" community, oppose a historical designation for our area.

	SIGNATURE	ADDRESS
1.	<u>Beatrice Gornicki</u>	<u>1644 Levenette 7-18-78</u>
2.	<u>Sam Feruch</u>	<u>1651, Leventlo 7-18-78</u>
3.	<u>Caumen Pantalieresco</u>	<u>1628 Levenette str. 7-18-78</u>
4.	<u>Mary Ann Xerri</u>	<u>1551 Levenette str 7/18/78</u>
5.	<u>Mary Ann Xerri</u>	<u>1554 Levenette str, 7/18-78</u>
6.	<u>Joseph E Zammitt</u>	<u>1544 Levenette 7-18-78</u>
7.	<u>Emanuel Altieri</u>	<u>1511 Levenette str-7/18-78</u>



Why Historic Preservation Needs a New Approach

With new tools and financing methods, preservationists could save endangered spaces without alienating those who should share our cause. Here's how we can adapt.

FEB 8, 2019

[Patricia Frey, President, National Main Street Center](#)

LAAVU



PONYRIDE



BATCH BREWING COMPANY



BATCH BREWING COMPANY



PINK ZONING/MIX TAPE ZONING



DETROIT INSTITUTE OF BAGELS



GOLD CASH GOLD



Specialty
LOANS
MONEY IN 15 MIN.

PAW
BROKER
RUE KORDIN
WASH

3 MONTH LOANS
ON ALL ARTICLES OF VALUE
OR
30 DAY BUY OPTION
FOR MORE MONEY

BUY
GOLD
DIAMONDS
ART-FURS
ANTIQUES
CRYSTAL
COINS

AM'S
CASH

Wabash

GOLD CASH GOLD





PETER VAN DYKE

COMMUNICATIONS INFRASTRUCTURE

ELTON PARK



DETROIT WATER AND SEWERAGE DEPARTMENT

Important Information from Detroit Water and Sewerage Department (DWSD)

Water & Sewer Pipeline Inspections

In order to improve the service in your neighborhood, DWSD will be in your neighborhood over the next few months to conduct water & sewer pipeline inspections.

WHAT YOU SHOULD KNOW:

- Work is performed 7 a.m. to 7 p.m. weekdays. **Work hours may extend to weekends from 8 a.m. to 4 p.m.**
- Inspection teams may need to access your backyard to perform work. Please grant inspectors access to enclosed or locked areas (details on back of door hanger).
- Inspection teams will **NEVER** ask to access the inside of your home.
- **Inspectors will carry ID, wear bright yellow vests and hard hats with logos that match work vehicles.**
- Water and sewer questions? Call 313-267-8000 or log onto *Improve Detroit* SeeClickFix.



Improving Detroit's water and sewer system together!
Program managed by CIPMO

HOW YOU CAN HELP

- Please unlock entry to all gates.
- If a fence is forbidding access to the work area, portions of the fence will be removed. The fence will be replaced to its original condition after work is completed.
- Please secure all animals during scheduled working hours.

Download the free
Improve Detroit app through
SeeClickFix for reporting
concerns or complaints.



KNIGHT FOUNDATION

**HEY, DETROIT,
WHAT'S YOUR BEST
IDEA FOR THE ARTS?**



**OYE, DETROIT,
¿CUÁL ES TU
MEJOR IDEA PARA
LAS ARTES?**



الجهة الأمامية: مرحبًا ديترويت، ما
هو أفضل ما لديكي من أفكار فنية
متميزة وفريدة يمكنك تقديمه؟





TIFFANY BROWN, JAY PITTER

**COMMUNITY
ENGAGEMENT**



VOTE
ANGELA
FOR
RECRUITMENT
OFFICE

40
FORWARD

"AKA"
Secretary
The
RESPECT
THE



400 FORWARD

adidas







CORKTOWN



BUS STOP

OPINION

BACKSLASH

WE ARE LOCAL
WE ARE GLOBAL
WE ARE DRIVEN
WE ARE INCLUSIVE

WE ARE ALL

WE ARE ALL



**CORKTOWN
COLLABORATIVE**

