

**M-5 /  
GRAND  
RIVER  
AVENUE**

**MDOT  
&  
CITY OF DETROIT  
  
STREETSCAPE  
BUSINESS OWNER  
FOCUS GROUP**

**25 March 2019  
GRAND RIVER WORKPLACE  
6:00-7:30 PM**



[www.detroitmi.gov/northwest](http://www.detroitmi.gov/northwest)

**M-5 /  
GRAND  
RIVER  
AVENUE**

**MDOT  
&  
CITY OF DETROIT**

**STREETSCAPE  
NEIGHBORHOOD  
FOCUS GROUP**

**7 March 2019  
CROWELL RECREATION  
CENTER  
6:00-7:30 PM**



[www.detroitmi.gov/northwest](http://www.detroitmi.gov/northwest)

**M-5 /  
GRAND  
RIVER  
AVENUE**

**MDOT  
&  
CITY OF DETROIT  
  
STREETSCAPE  
NEIGHBORHOOD  
FOCUS GROUP**

**6 March 2019  
Grandmont Rosedale  
Development Corporation  
6:00-7:30 PM**



[www.detroitmi.gov/northwest](http://www.detroitmi.gov/northwest)

# **M-5 / GRAND RIVER AVE.**

## **AGENDA**

- **Quick Project Overview**
- **What we have heard?**
- **Design Update: Pedestrian Crossings**
- **Overall Project Budget**
- **Streetscape Amenities**
- **Q & A**
- **Open House Review**

# M-5 GRAND RIVER AVENUE MDOT ROADWAY & STREETScape PROJECT

## Project Area

**2.8 Miles**

Berg Rd to Southfield Fwy

## Streetscape Nodes

**1 0.45 Miles**

Cooley to McNichols

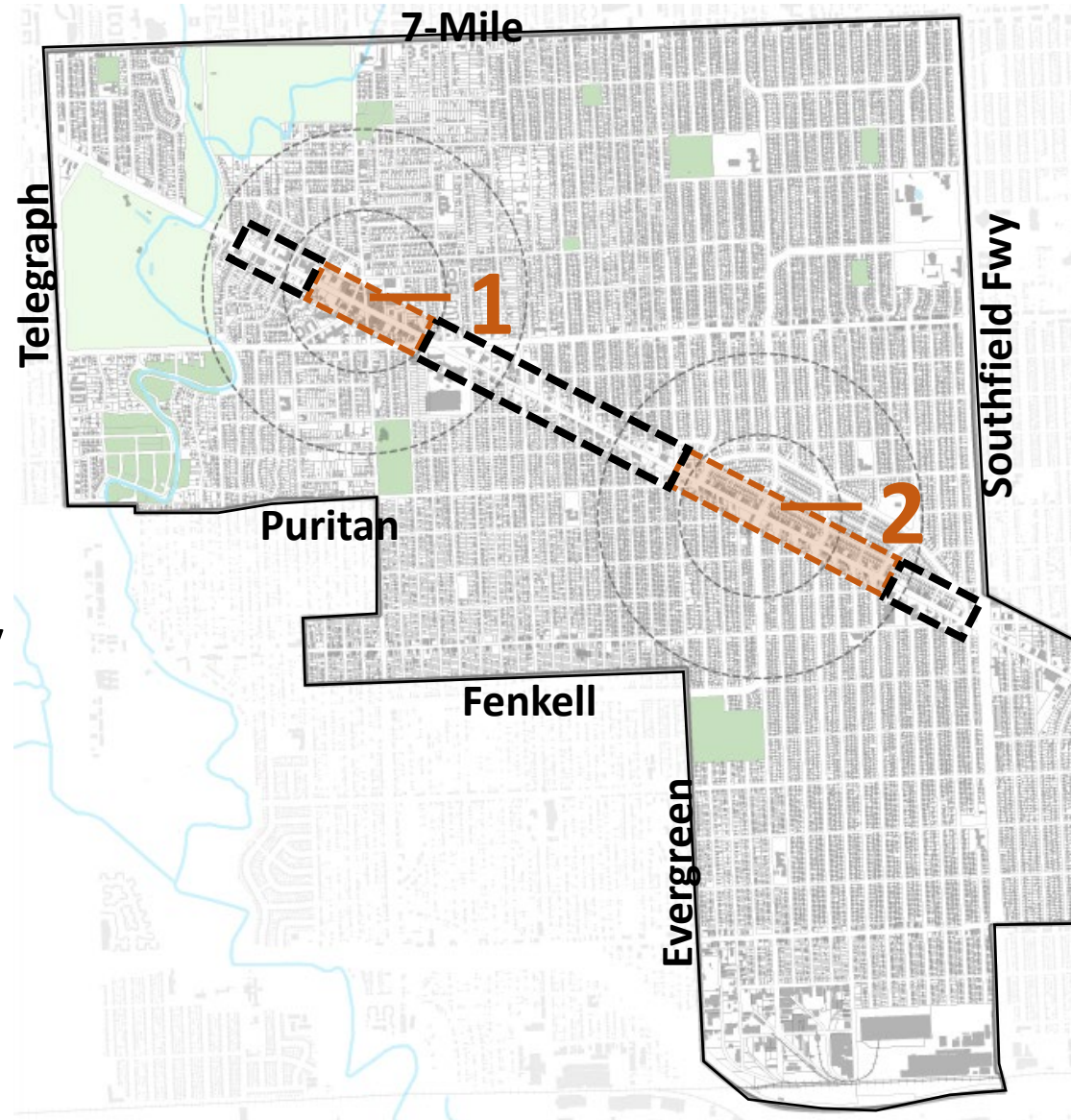
**2 0.75 Miles**

Evergreen to Glastonbury

**\$8 Million Road Investment**

**State Contribution: \$7M**

**City Contribution: \$1M**



# SCHEDULE

## DESIGN PROCESS (6 Months)

Nov. 2018 – Apr. 2019

## CONSTRUCTION

2019-2020

**Pre-Launch Informational Meeting**  
Oct. 22, 2018  
Oct. 23, 2018

**CONCEPT Design Review**  
**Dec. 13, 2018**

- Road Section Options
- Potential Pedestrian Crossings

**INTERIM Design Review**  
**Feb. 5, 2018**

- Preferred Street Section
- Preferred Pedestrian Crossings
- Streetscape Amenities

**NEIGHBORHOOD Detail Review**  
**March 6-7th**

**BUSINESS OWNERS Detail Review**  
**March 25th**

**TODAY**

**FINAL Design Presentation**  
**Apr. 10, 2018**

- Final Design
- Construction Management & Staging
- Review Maintenance Plan

**July 2019 – Nov. 2019**

- Watermain Replacement
- Sidewalks/Bump Outs
- Road Resurfacing

**April 2020 – Nov. 2020**

- Lighting
- Landscape
- Site Furnishings



**PREVIOUS  
NEIGHBORHOOD  
FEEDBACK**

# Community Feedback Sessions



February 2017 Meeting with 104 Attendees



March 2017 Meeting with 80 Attendees



April 2017 Open House with 90 Attendees



October 2018 Informational: 111 Attendees



# MDOT Community Feedback Sessions



**December 13, 2018**

- **Street Section & Crossings**
- **120 Survey Responses**  
(Written & Web)



**February 5, 2019**

- **Crossing Design & Amenities**
- **86 Survey Responses**  
(Written & Web)

## **Pedestrian Crossings:**

- Support for additional crossings, especially in coordination with bus stops & key commercial areas.
- Preference for RFBs over fully signalized intersections
- Driver & Pedestrian education is critical

**Amenities:** Include Recycling in trash can design. Cluster amenities like benches and bike racks in key locations.

**Parking:** Minimizing impact to street parking in front of businesses without off-street lots is a priority

**Landscape:** Design needs to consider maintenance & visibility, and be coordinated with business community

**Additional Comments:** Focus on infrastructure improvements and provide guidance to community groups to manage/maintain upgrades & future additional lower-cost amenities.

## Average Score for Ranked Priorities:

- 2.6** Ensure all Proposed Pedestrian Crossings are incorporated
  - 2.9** Include bump-outs at every intersection & crossing
  - 3.2** Street Trees & Landscaping
  - 3.6** Trash Cans
  - 4.1** Street Furniture: Benches, Bike Racks
  - 4.6** Neighborhood Branding: Banners, Decorative Sidewalks, etc
- Over 2/3 of respondents prioritized Pedestrian Crossings and Bumpouts as their top two priorities.
  - Trash Cans, Trees, Landscaping & Street Furniture were most people's third and fourth priority, and pretty evenly supported.
  - Most respondents ranked Neighborhood Branding as their lowest priority.

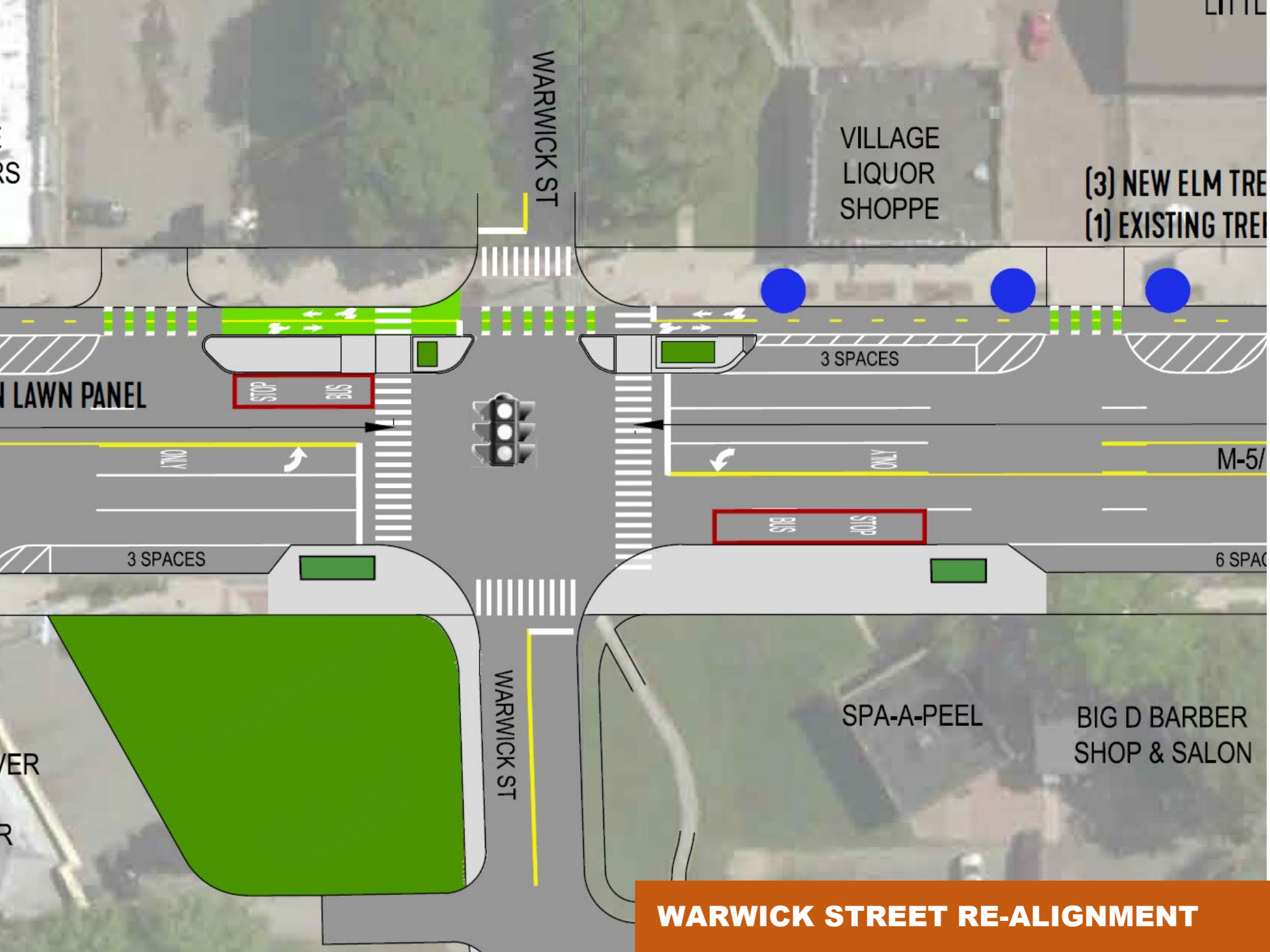
# **PROPOSED DESIGN**

# PEDESTRIAN CROSSINGS: EXISTING





**OC WARWICK STREET RE-ALIGNMENT**



ERS

LITTL

WARWICK ST

VILLAGE LIQUOR SHOPPE

(3) NEW ELM TREE  
(1) EXISTING TREE

LAWN PANEL

STOP BUS

3 SPACES



BUS STOP

M-5/

6 SPAC

3 SPACES

WARWICK ST

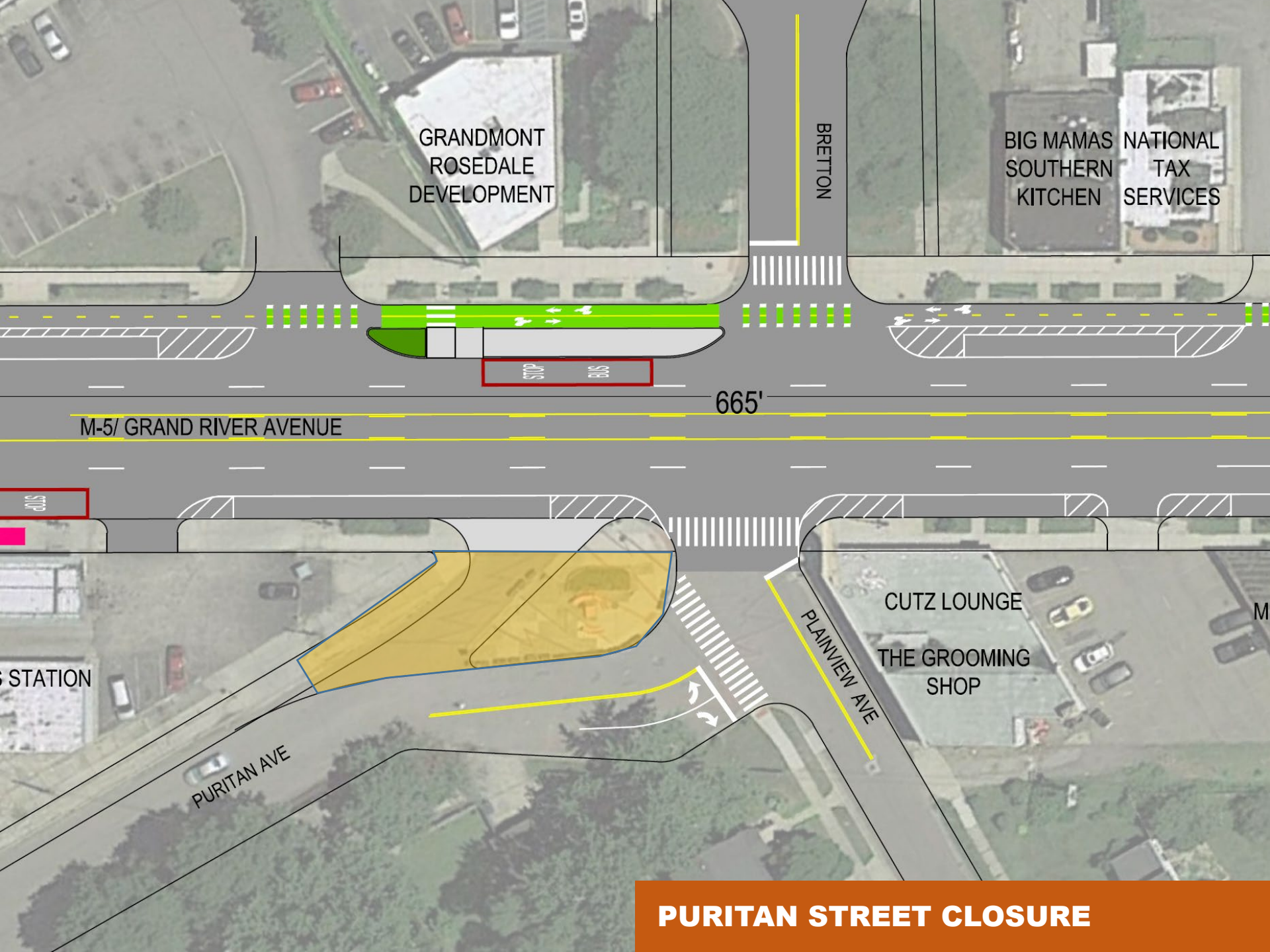
SPA-A-PEEL

BIG D BARBER SHOP & SALON

VER

R

**WARWICK STREET RE-ALIGNMENT**



GRANDMONT  
ROSEDALE  
DEVELOPMENT

BRETTON

BIG MAMAS NATIONAL  
SOUTHERN KITCHEN  
TAX SERVICES

665'

M-5/ GRAND RIVER AVENUE

STOP

STATION

PURITAN AVE

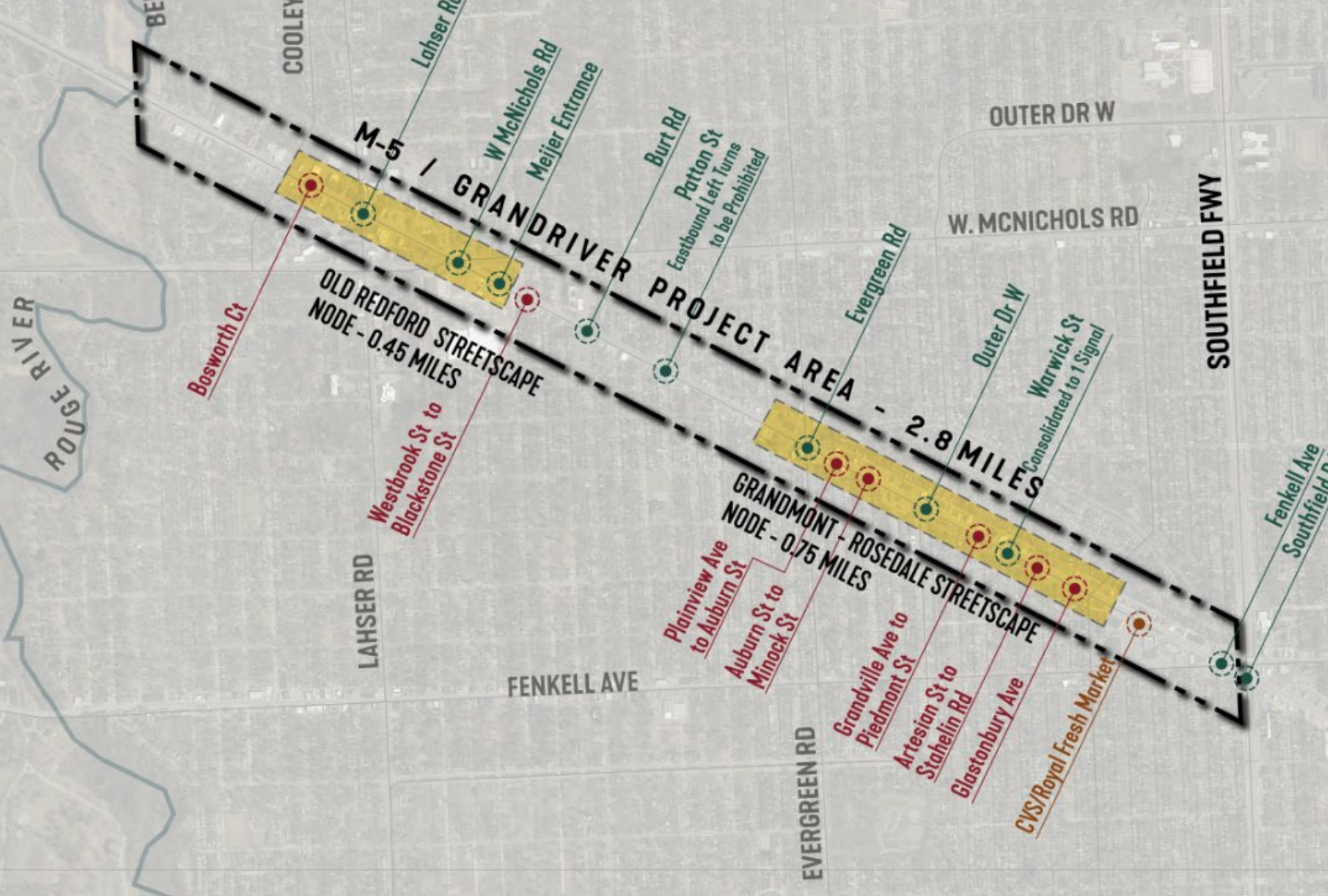
PLAINVIEW AVE

CUTZ LOUNGE  
THE GROOMING SHOP

**PURITAN STREET CLOSURE**







- EXISTING SIGNALIZED INTERSECTION
- PROPOSED CROSSING - WITH SIGNAL (1 LOCATION)





OLD  
REDFORD

DE'S PIZZA \$9.99  
4-5555

LIQUOR PIZZA SLICES LOTTO

OLD REDFORD  
BEER LOT

BUS ONLY

BUS ONLY

# **BUDGET & PRIORITIES**

# Community Design Priorities

## Budget

## Streetscape Element

**Proposed Design**

\$\$\$\$\$



Selected Roadway Design

\$\$\$\$



Signalized Pedestrian Crossings

\$\$



Pedestrian Refuge Islands

\$\$



Sidewalk Bump-outs

\$\$



Bus Shelters

**Optional Elements**

\$



Trash Cans

\$\$\$



Street Trees and Landscaping

\$\$\$\$\$



Pedestrian Lighting

\$\$



Neighborhood Branding

\$\$



Street Furniture

# Community Design Priorities

	Cost	Streetscape Element
\$5.6M	\$\$\$\$\$	Selected Roadway Design & Contingencies, Mobilization, etc...
\$500K	\$\$\$\$	Signalized Pedestrian Crossings
	\$\$	Pedestrian Refuge Islands
	\$\$	Sidewalk Bump-outs
	\$\$	Bus Shelters
\$400K	\$	Trash Cans
	\$\$\$	Street Trees and Landscaping
	\$\$\$\$\$	Pedestrian Lighting
	\$\$	Neighborhood Branding
	\$\$	Street Furniture

# Proposed Amenities: Unit Costs

	<b>Cost</b>	<b>Streetscape Element</b>
<b>Total Budget \$400K</b>	\$1,400	● Trash Cans
	\$1,650	● Street Trees in Lawn Panel
	\$4,600	● Street Tree in Tree Grate
	\$1,910	● Landscaping Lawn Panels
	\$25/sq ft	● Landscaping in Bump-outs
	\$2,400	● Benches
	\$900	● Bike Racks
	\$4-9,000	● Decorative Crosswalks
	\$575	● Neighborhood Banners



# M-5 GRAND RIVER AVENUE MDOT ROADWAY & STREETScape PROJECT

## Project Area

**2.8 Miles**

Berg Rd to Southfield Fwy

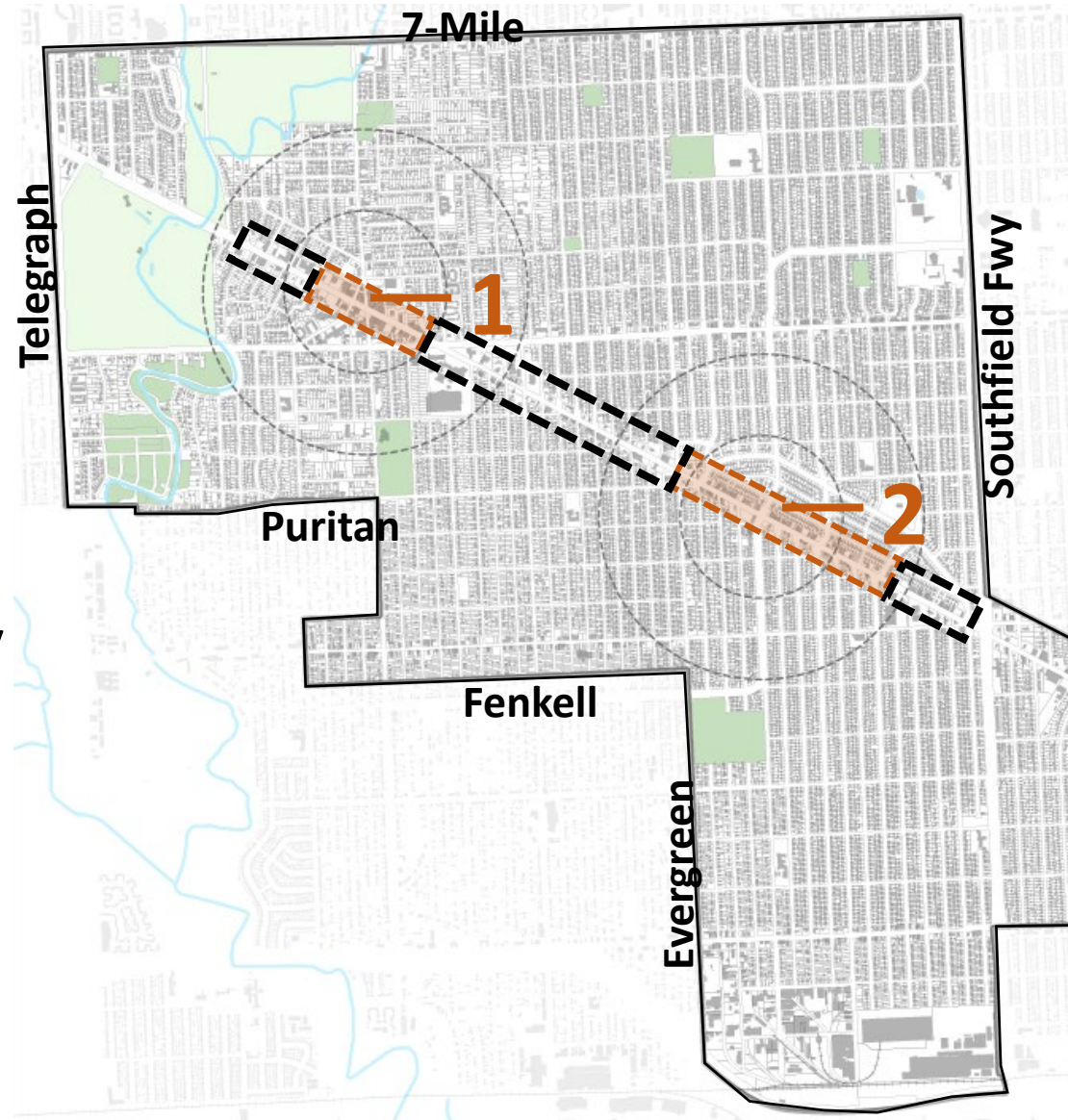
## Streetscape Nodes

**1 0.45 Miles**

Cooley to McNichols

**2 0.75 Miles**

Evergreen to Glastonbury



# Proposed Amenities: Grandmont Rosedale

Budget	Cost	Streetscape Element
~\$200K	\$30K	● Trash Cans
	\$30K	● Benches
	\$15K	● Bike Racks
	\$55K	● Street Trees in Lawn Panels
	\$37K	● Street Trees in Sidewalk Grates
\$167K	\$40K	● Landscaping Lawn Panels (Qty 20)
	\$45K	● Landscaping in Bump-outs (At Crossings)
	\$25K	● Decorative Crosswalks (At Crossings)
\$110K		

- Utilize existing lawn panels for landscaping & street trees
- Cluster trash cans and benches at bus stop locations
- Identify priority locations for bike racks to serve businesses
- Identify locations for sidewalk repair

# Proposed Amenities: Old Redford

**Budget**  
~\$200K

**Cost**

**Streetscape Element**

\$20K ● Trash Cans

\$30K ● Benches

**\$160K**

\$10K ● Bike Racks

\$100K ● Street Trees in Sidewalk Grates

\$40K ● Landscaping in Bumpouts

**\$230K**

\$150K ● Pedestrian Lighting (McNichols to Redford)

\$32K ● Neighborhood Banners (Entire Node)

\$8K ● Decorative Crosswalks (At New Crossings)

- Cluster trash cans and benches at bus stop locations
- Identify locations for New Trees
- Identify priority locations for bike racks to serve businesses
- Identify locations for sidewalk repair

# **STREETSCAPE ELEMENTS**

# STREETSCAPE FURNITURE



**TRASH  
RECEPTACLES**



**LIGHT POLE  
BANNERS**



**BENCHES**



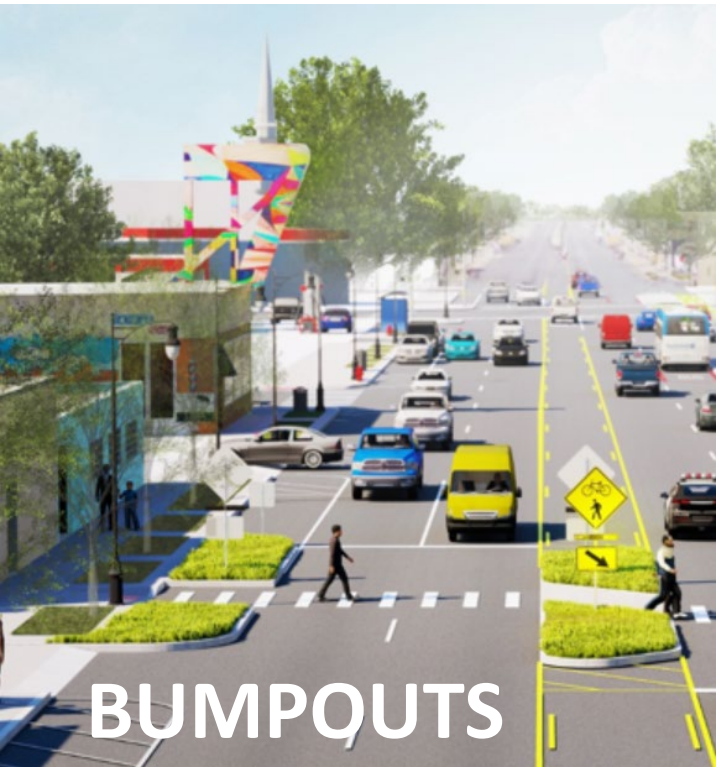
**BIKE RACKS**



# CROSSWALKS: PROPOSED OPTIONS



# STREET TREES: POTENTIAL LOCATIONS



BUMPOUTS



SIDEWALKS



LAWN PANELS

# STREET TREES: OPTIONS

## SHADE TREES

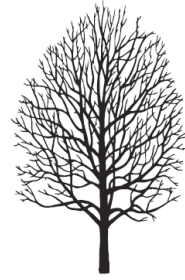
*form*



Celebration Maple



Littleleaf Linden



Frontier Elm



Hardy Rubber Tree



Kentucky Coffee Tree

*size*

+ HEIGHT: 40'-50'  
+ SPREAD: 20'-35'

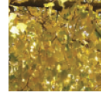
+ HEIGHT: 50'-70'  
+ SPREAD: 35'-50'

+ HEIGHT: 35'-40'  
+ SPREAD: 25' -30'

+ HEIGHT: 40'-60'  
+ SPREAD: 30' -50'

+ HEIGHT: 60'-80'  
+ SPREAD: 40' -55'

*fall color*



## ORNAMENTAL TREES

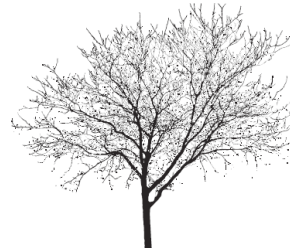
*form*



Cruzam Thornless Hawthorne



Japanese Lilac Tree



Eastern Redbud



Spring Show Crabapple

*size*

+ HEIGHT: 20'-35'  
+ SPREAD: 25'-35'

+ HEIGHT: 20'-30'  
+ SPREAD: 15'-20'

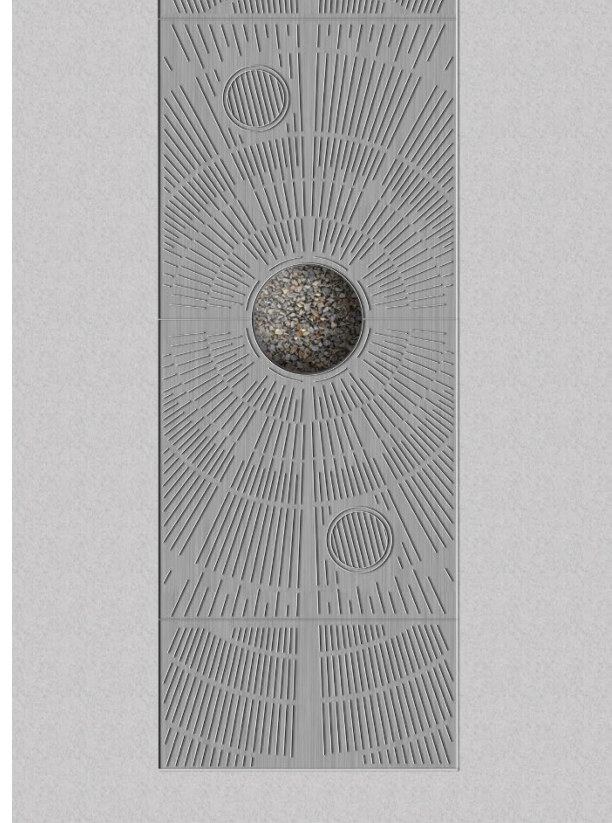
+ HEIGHT: 20'-30'  
+ SPREAD: 25'-35'

+ HEIGHT: 20'-25'  
+ SPREAD: 15'-20'

*flowering*







# LANDSCAPING: OPTIONS



*Panicum virgatum*  
'Shenandoah'



*Panicum virgatum*  
'Rehbraun'



In Winter

Switch Grass



*Hemerocallis*  
'Happy Returns'



*Hemerocallis*  
'Ruby Stella'



*Hemerocallis*  
'Orange Smoothie'

Daylilies



*Spiraea japonica* 'Gold Mound'



*Spiraea japonica*  
'Anthony Waterer'



*Calamagrostis x acuti-*  
*flora* 'Karl Foerster'

Spirea

Feather Reed Grass

# Q & A



**THANK YOU!**