

**M-5 /
GRAND
RIVER
AVENUE**

**MDOT
&
CITY OF DETROIT**

**COMMUNITY
MEETING**

**5 February 2019
CROWELL RECREATION
CENTER
6:00-7:30 PM**



www.detroitmi.gov/northwest

M-5 / GRAND RIVER AVE.

AGENDA

- **Introduction & Overview**
- **What we have heard?**
- **Preferred Street Section**
- **Pedestrian Crossings**
- **Streetscape Amenities**
- **Q & A**
- **Open House Review**

*** PLEASE FILL OUT AND RETURN SURVEY BEFORE LEAVING!**

M-5 GRAND RIVER AVENUE MDOT ROADWAY & STREETScape PROJECT

Project Area

2.8 Miles

Berg Rd to Southfield Fwy

Streetscape Nodes

1 0.45 Miles

Cooley to McNichols

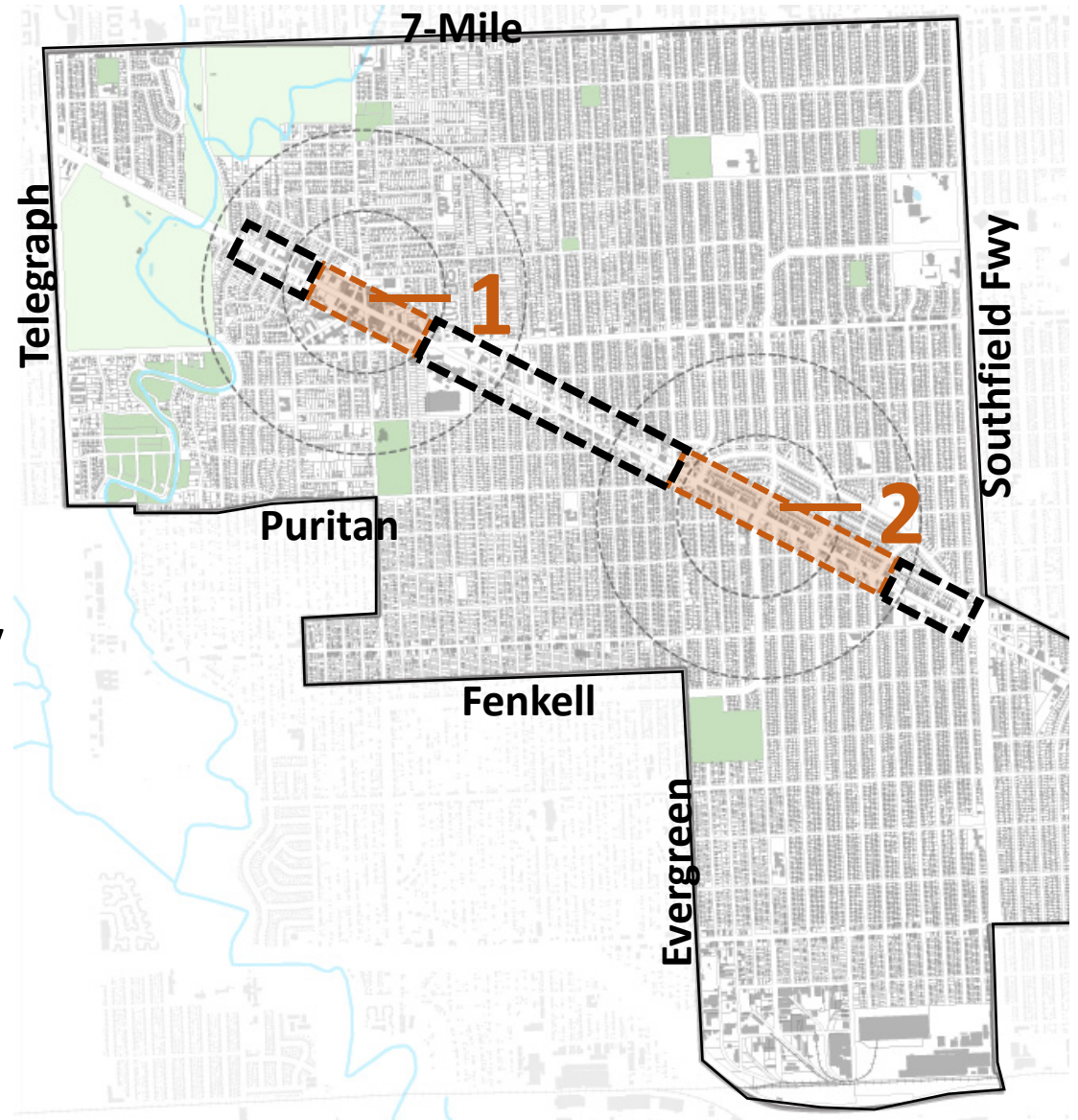
2 0.75 Miles

Evergreen to Glastonbury

**\$8 Million Road
Investment**

State Contribution: \$7M

City Contribution: \$1M



SCHEDULE

DESIGN PROCESS (6 Months)

Nov. 2018 – Apr. 2019

CONSTRUCTION

2019-2020

TODAY

Pre-Launch Informational Meeting

Oct. 22, 2018
Oct. 23, 2018

CONCEPT Design Review

Dec. 13, 2018

- Road Section Options
- Potential Pedestrian Crossings

INTERIM Design Review

Feb. 5, 2018

- Preferred Street Section
- Preferred Pedestrian Crossings
- Streetscape Amenities

OLD REDFORD Detail Review

TBD

GRANDMONT ROSEDALE Detail Review

TBD

FINAL Design Presentation

Apr. 10, 2018

- Final Design
- Construction Management & Staging
- Review Maintenance Plan

July 2019 – Nov. 2019

- Watermain Replacement
- Sidewalks/Bump Outs
- Road Resurfacing

April 2020 – Nov. 2020

- Lighting
- Landscape
- Site Furnishings

MDOT / City Design Meetings
December - March

**PREVIOUS
NEIGHBORHOOD
FEEDBACK**

Community Feedback Sessions



February 2017 Meeting with 104 Attendees



March 2017 Meeting with 80 Attendees



April 2017 Open House with 90 Attendees



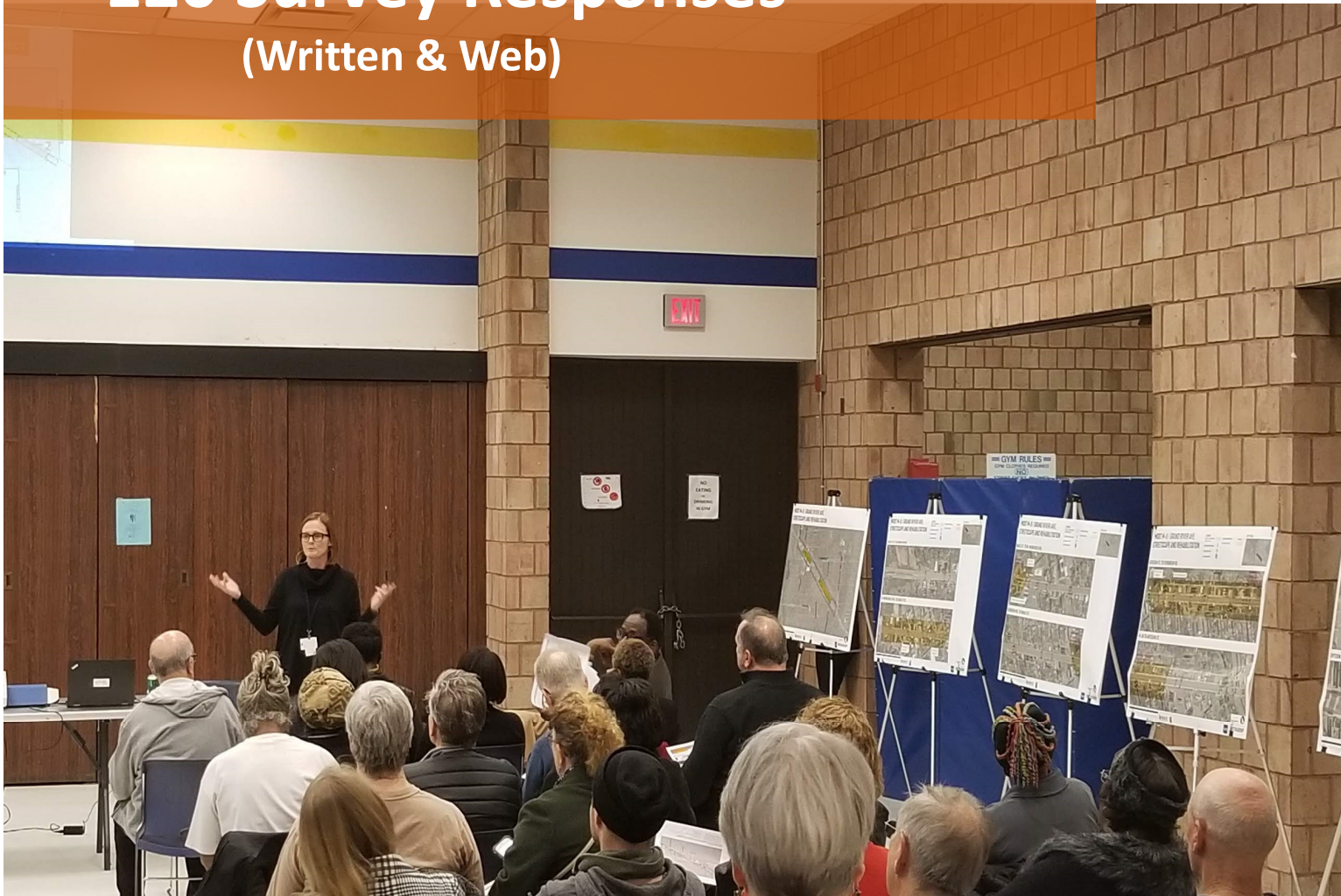
October 2018 Informational: 111 Attendees

Community Feedback Sessions

December 13, 2018

- Street Section & Crossings
- 120 Survey Responses

(Written & Web)



Community Design Priorities



Safe Pedestrian Crossings:

- Additional crossing locations are needed
- Shorter crossing distances & better protections at crossings

Traffic Calming: Slow the cars down to posted speeds

Parking: Need access to safe parking in front of businesses

Landscape: Design needs to consider maintenance & visibility

Lights: Existing inadequate lighting needs to be addressed to improve safety & allow opportunity for neighborhood banners

Transit: Better signage and amenities at bus stops

Community Design Priorities

Other:

- Concern for cohesive design and **amenities** covering entire project area (not just streetscape nodes)
- Desire to **extend project** North and South
- Desire for involvement of artists in **neighborhood branding**
- Priority to support **business growth, walkability** and **café seating**



STREET SECTION OPTIONS

GRAND RIVER AVENUE



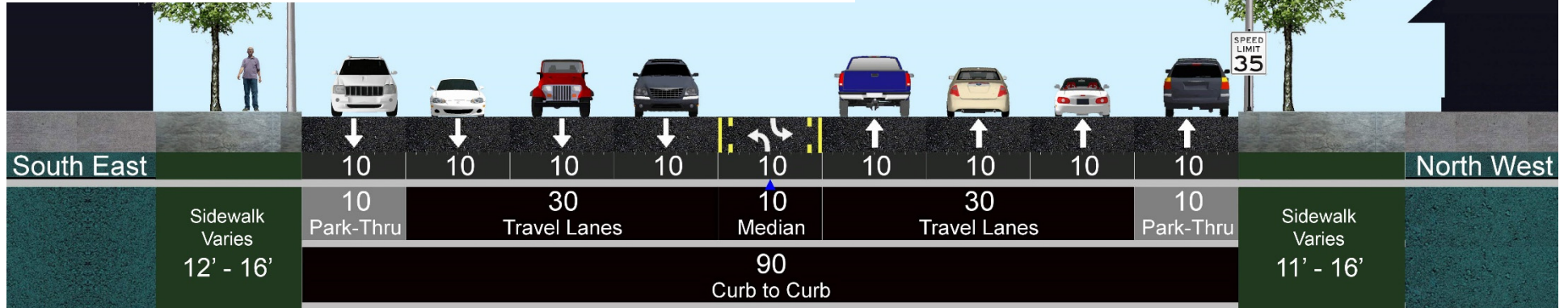
Street Section:

A cut through the entire width of the Road Right-of-Way that shows how much space is allocated to different uses (Sidewalk, Parking, Driving, etc...)

EXISTING CONDITION

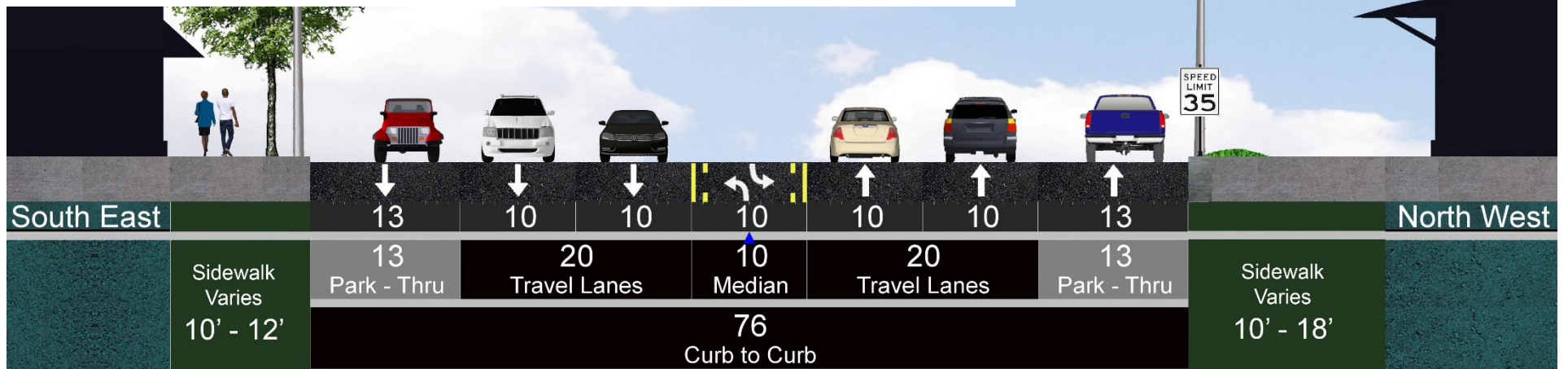
MCNICHOLS RD. to BERG RD.

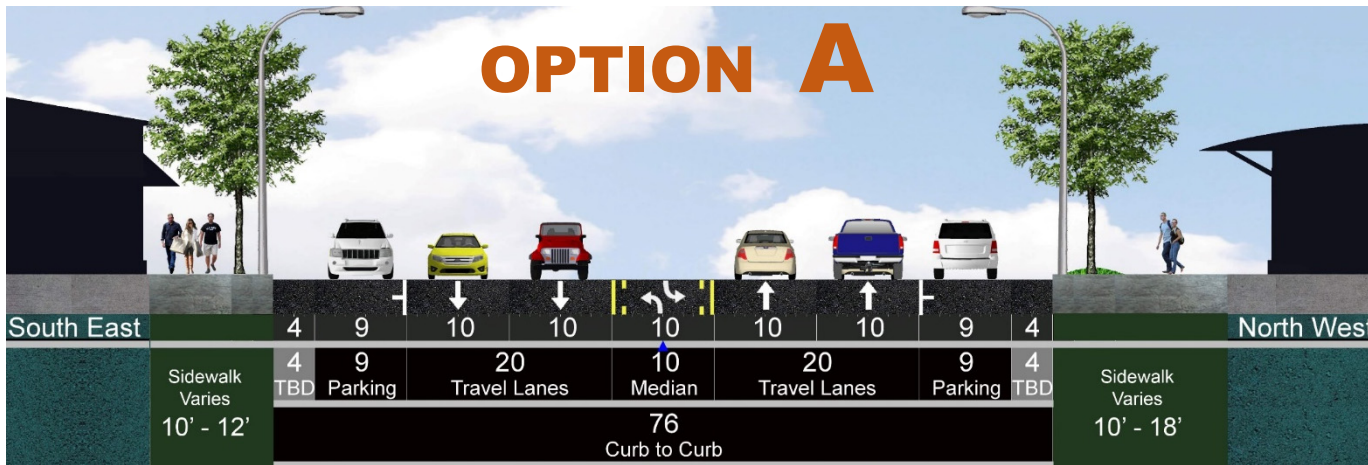
RIGHT-OF-WAY: **120FT.** CURB TO CURB: **90 FT.**



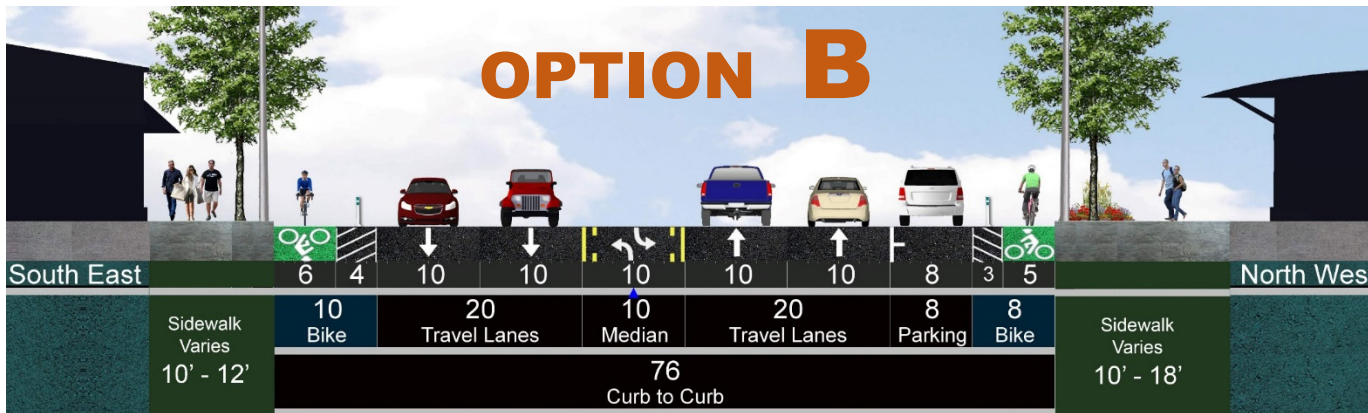
SOUTHFIELD FWY to MCNICHOLS RD.

RIGHT-OF-WAY: **100 / 105 FT.** CURB TO CURB: **76 FT.**

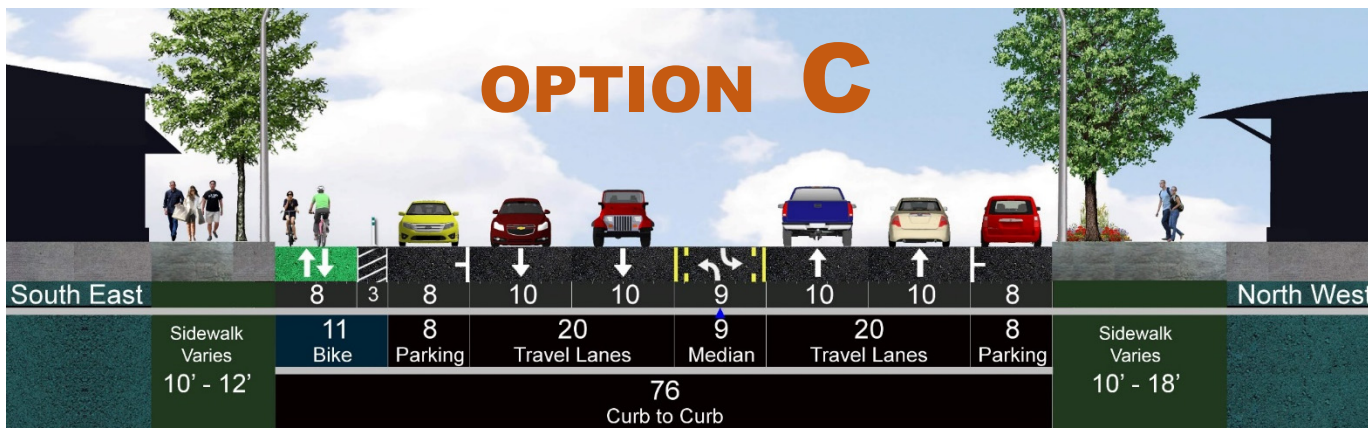




- NO BIKE LANES
- PARKING ON BOTH SIDES



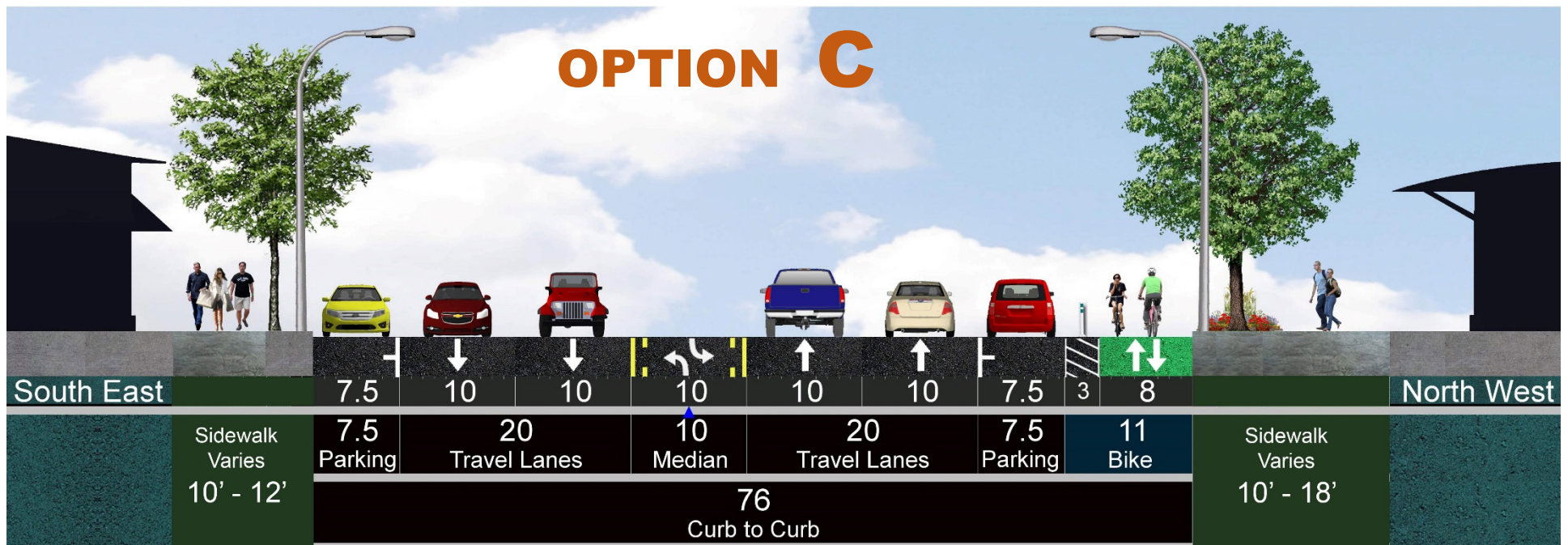
- 1-WAY PROTECTED BIKE LANES
- PARKING ON ONE SIDE



- 2-WAY PROTECTED BIKE LANE
- PARKING ON BOTH SIDES

PREFERRED STREET SECTION

- **75%** of Respondents **Support Bike Lanes**
- 22% are satisfied with Option A and Only 13% prefer Option A
- Neutral response to Option B
- **Option C** meets the needs of over **75%** with **over 50%** of this **strongly supporting**



PROPOSED DESIGN

2-WAY BIKE LANES (CYCLE TRACK)

BIKE
SYMBOLS

PROTECTED
BUFFER

GREEN
PAINT

BIKE
BOLLARD



EXISTING SIGNALIZED INTERSECTION

BIKE
SIGNAL

2-WAY BIKE
LANE

LANDSCAPE
ISLAND

CROSSWALK

CURB
BUMP-OUT

REDUCED CROSSING
DISTANCE: 40 FEET



DESIGNATED BUS STOP ISLANDS

PAVEMENT
MARKINGS

BUS
ISLAND

RAISED
CROSSING

2-WAY
BIKE LANE

CROSSWALK



- Bus Stops on NORTH side of Grand River Ave.

NEW BUS SHELTERS



- LAHSER (WB)
- MCNICHOLS (EB)



- EVERGREEN (EB /WB)
- ASHTON (EB)

PEDESTRIAN CROSSING

CURB
BUMP-OUT

NEW
CROSSWALK

REFUGE
ISLAND

RAPID
FLASH
BEACON

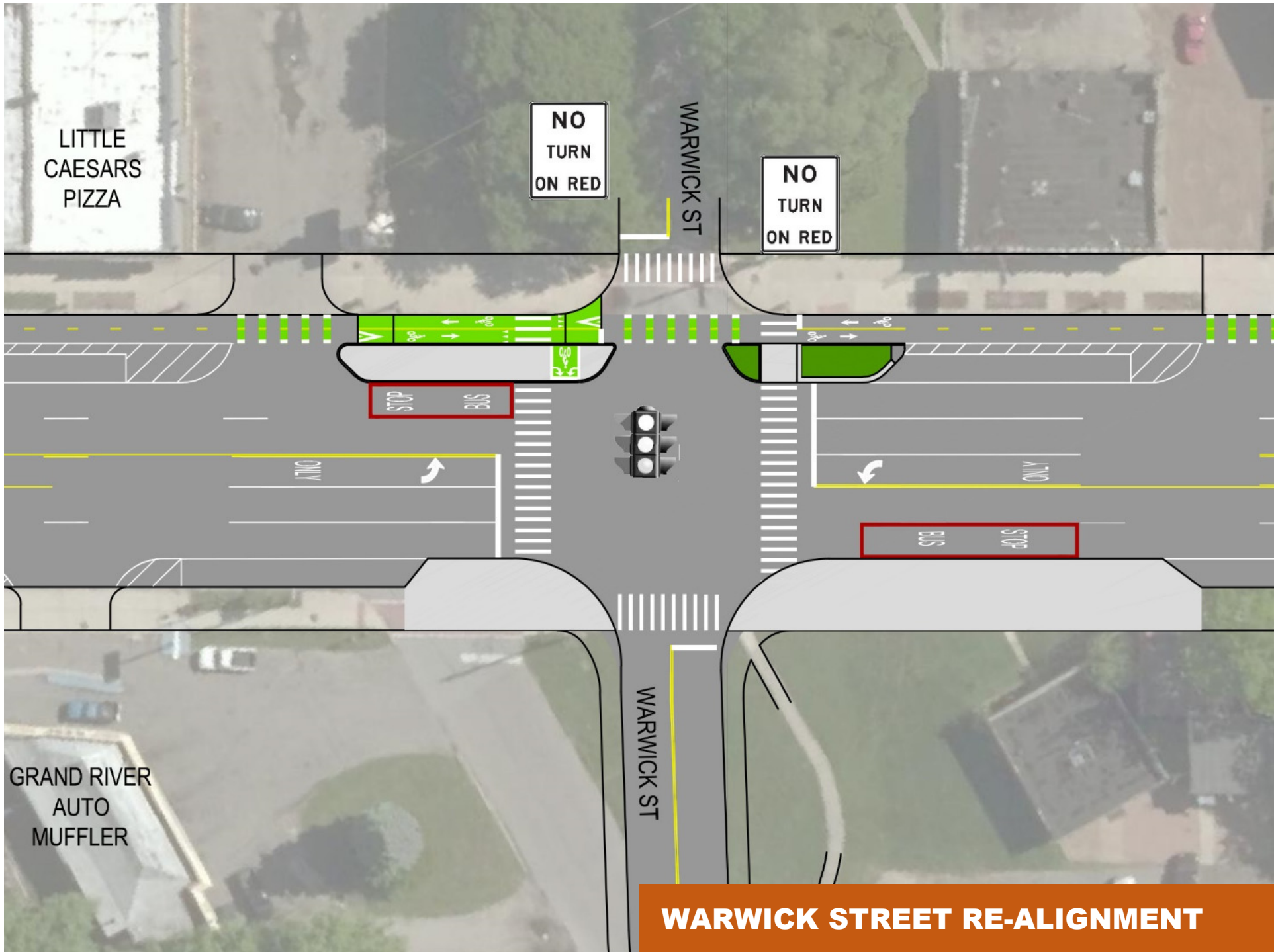


PEDESTRIAN CROSSINGS: EXISTING



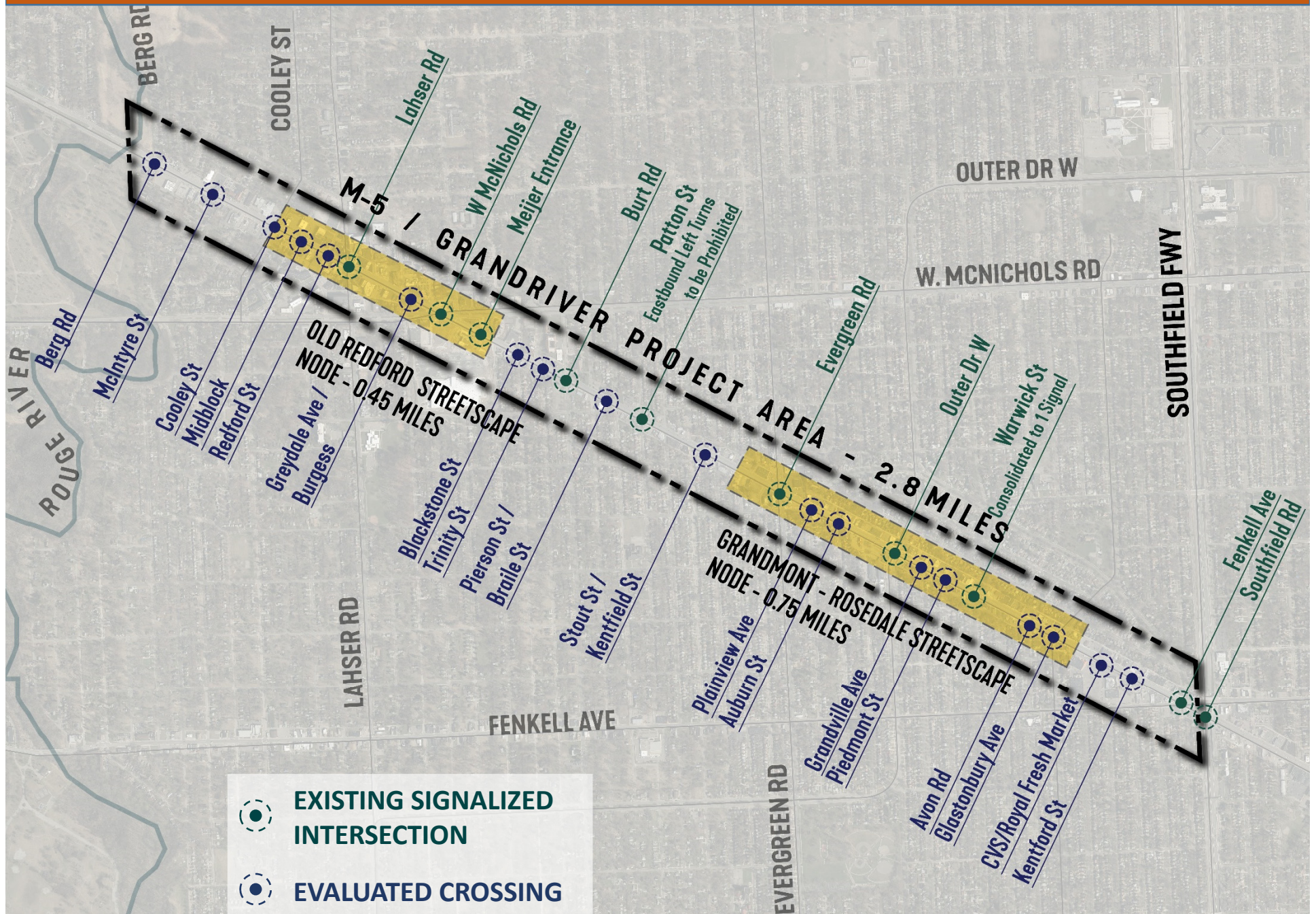


WARWICK STREET RE-ALIGNMENT

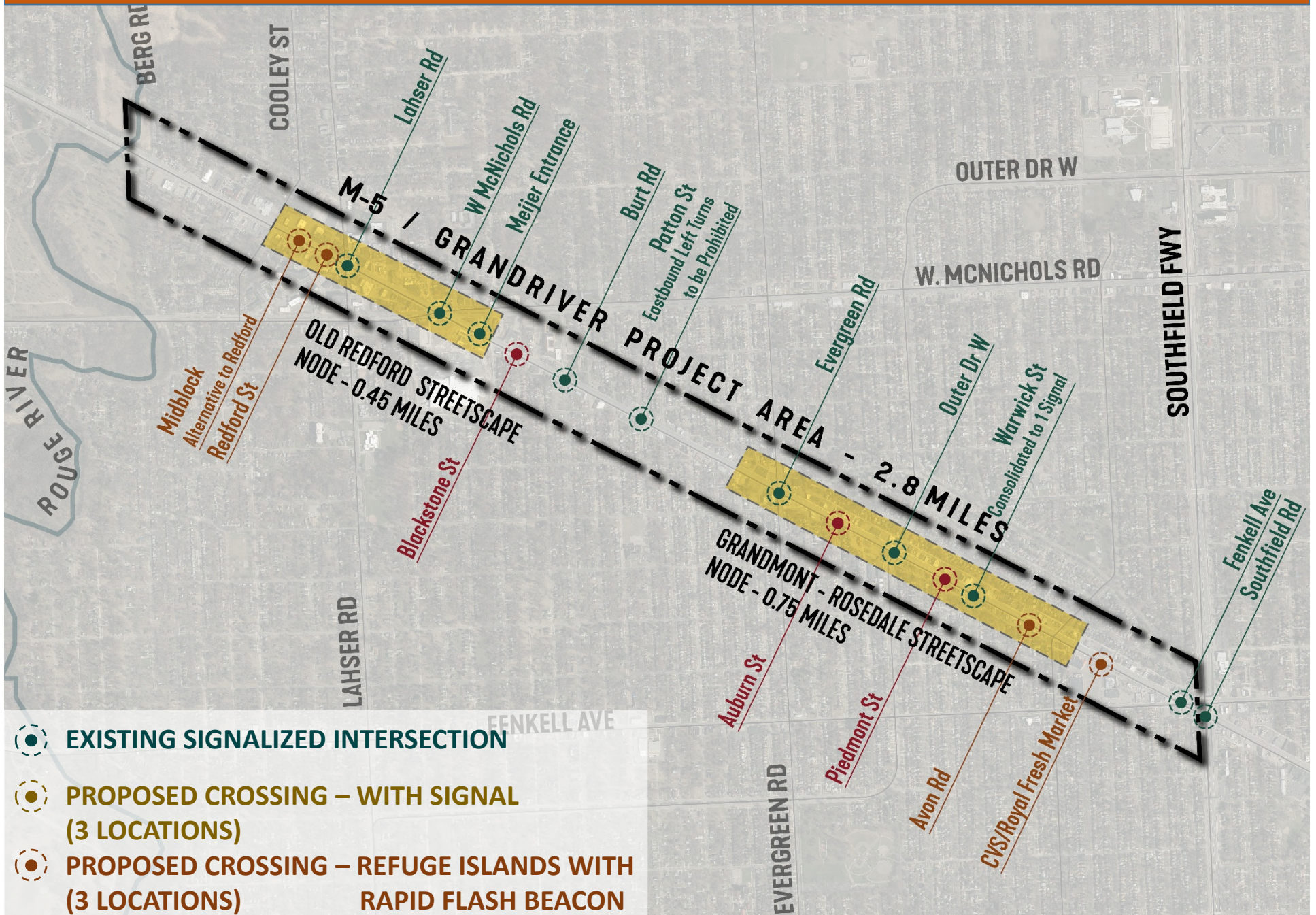


WARWICK STREET RE-ALIGNMENT

PEDESTRIAN CROSSINGS: EVALUATED



PEDESTRIAN CROSSINGS: FINAL PROPOSED

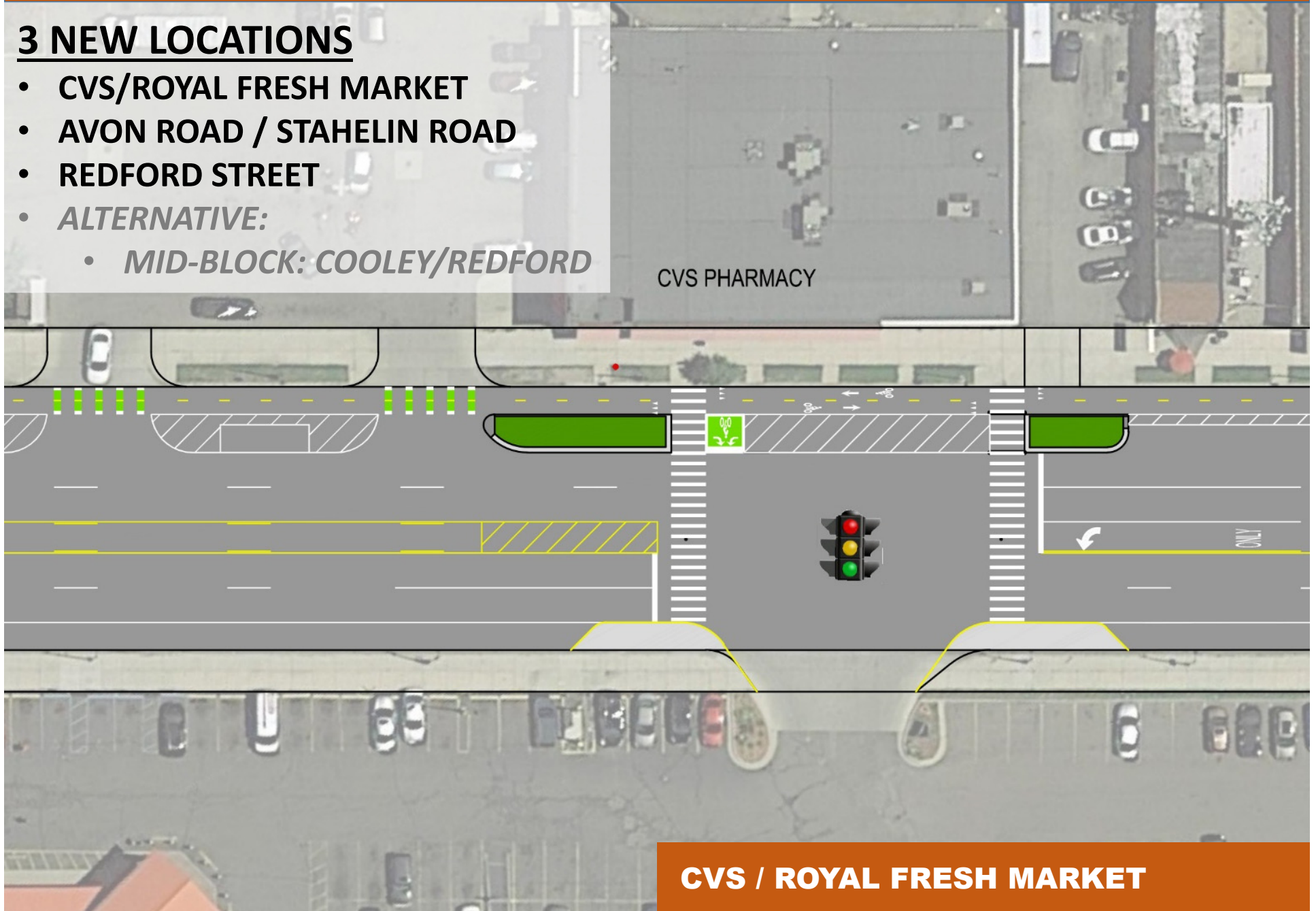


NEW PEDESTRIAN CROSSING – WITH SIGNAL

3 NEW LOCATIONS

- CVS/ROYAL FRESH MARKET
- AVON ROAD / STAHELIN ROAD
- REDFORD STREET
- *ALTERNATIVE:*
 - *MID-BLOCK: COOLEY/REDFORD*

CVS PHARMACY



CVS / ROYAL FRESH MARKET

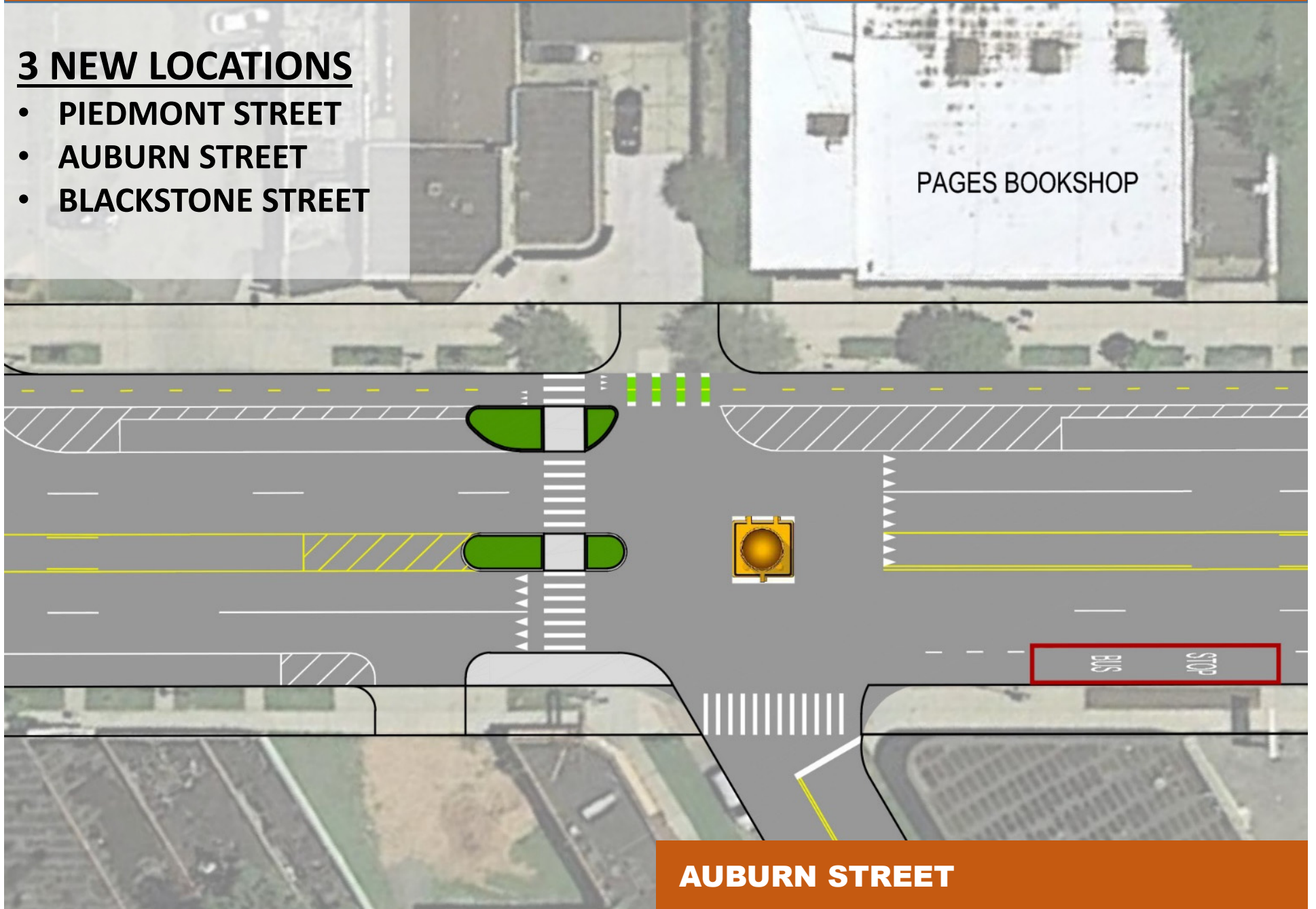
NEW PEDESTRIAN CROSSING - NO SIGNAL

3 NEW LOCATIONS

- PIEDMONT STREET
- AUBURN STREET
- BLACKSTONE STREET

PAGES BOOKSHOP

AUBURN STREET



BUDGET & PRIORITIES

Community Design Priorities

	Budget	Streetscape Element
Proposed Design	\$\$\$\$\$	● Selected Roadway Design
	\$\$\$\$	● Signalized Pedestrian Crossings
	\$\$	● Pedestrian Refuge Islands
	\$\$	● Sidewalk Bump-outs
	\$\$	● Bus Shelters
Optional Elements	\$	● Trash Cans
	\$\$\$	● Street Trees and Landscaping
	\$\$\$\$\$	● Pedestrian Lighting
	\$\$	● Neighborhood Branding
	\$\$	● Street Furniture

**Additional
STREETSCAPE
ELEMENTS**

M-5 GRAND RIVER AVENUE MDOT ROADWAY & STREETScape PROJECT

Project Area

2.8 Miles

Berg Rd to Southfield Fwy

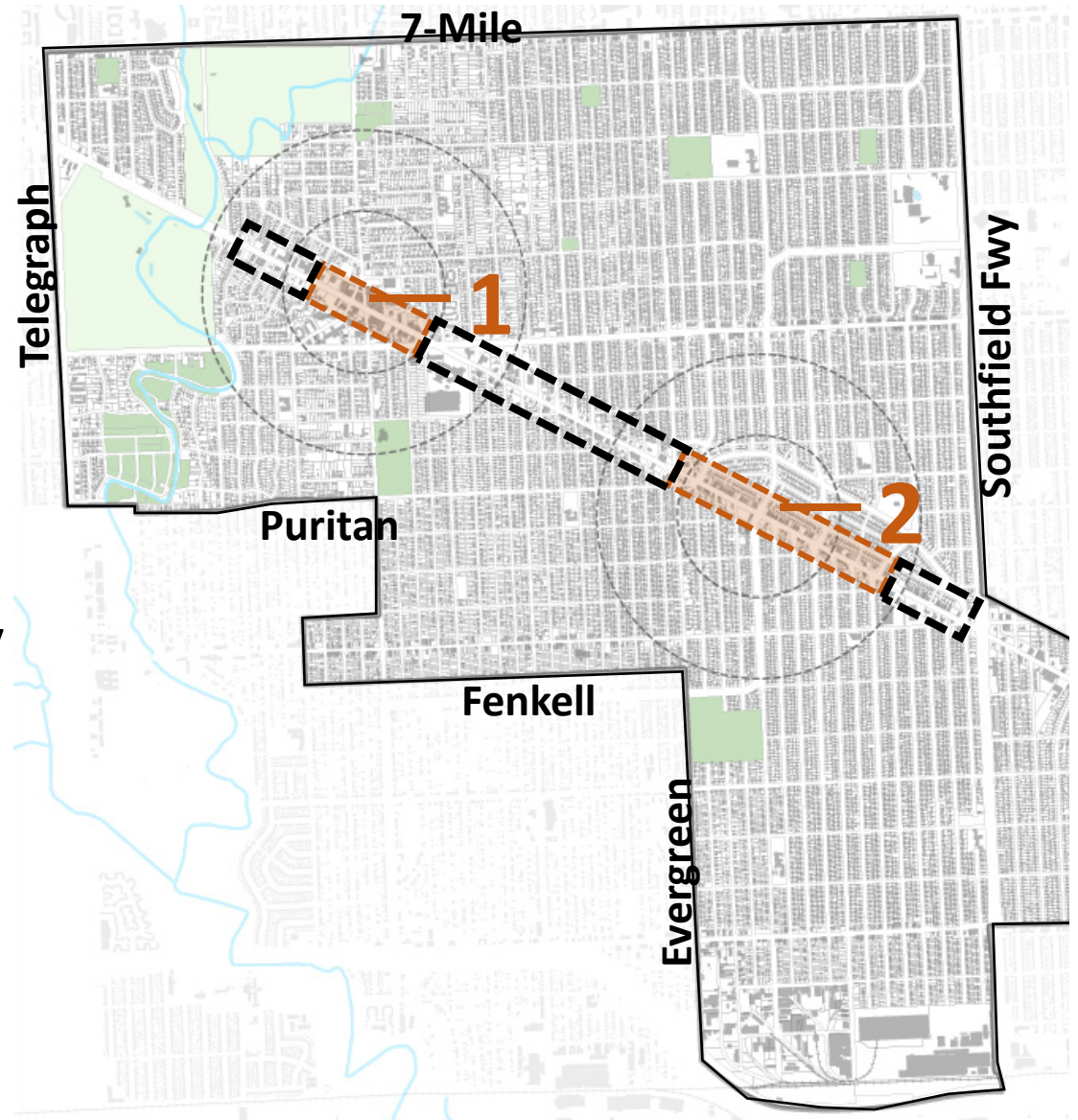
Streetscape Nodes

1 0.45 Miles

Cooley to McNichols

2 0.75 Miles

Evergreen to Glastonbury



STREETSCAPE FURNITURE



**TRASH
RECEPTACLES**



BENCHES



BIKE RACKS



**LIGHT POLE
BANNERS**

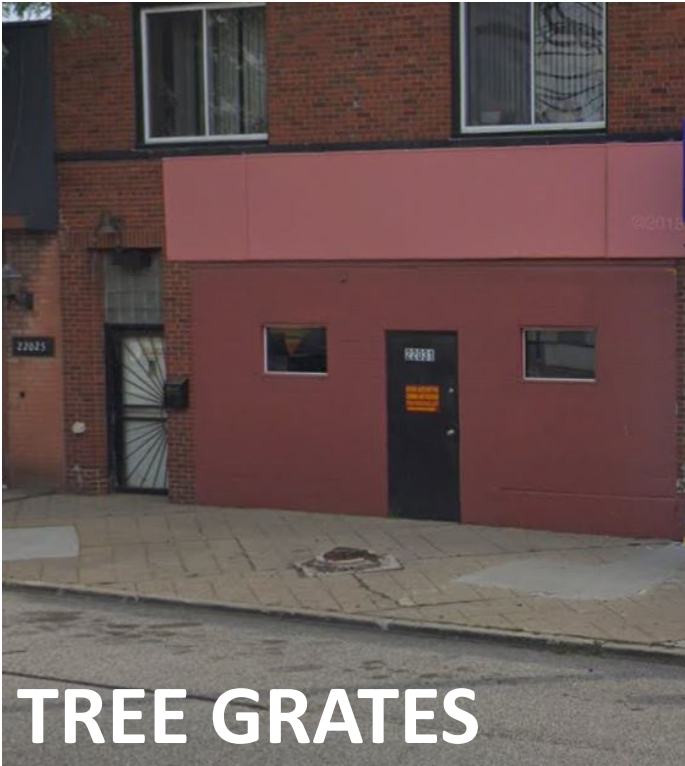
CROSSWALKS: EXISTING



CROSSWALKS: PROPOSED OPTIONS



STREET TREES: POTENTIAL LOCATIONS



Q & A



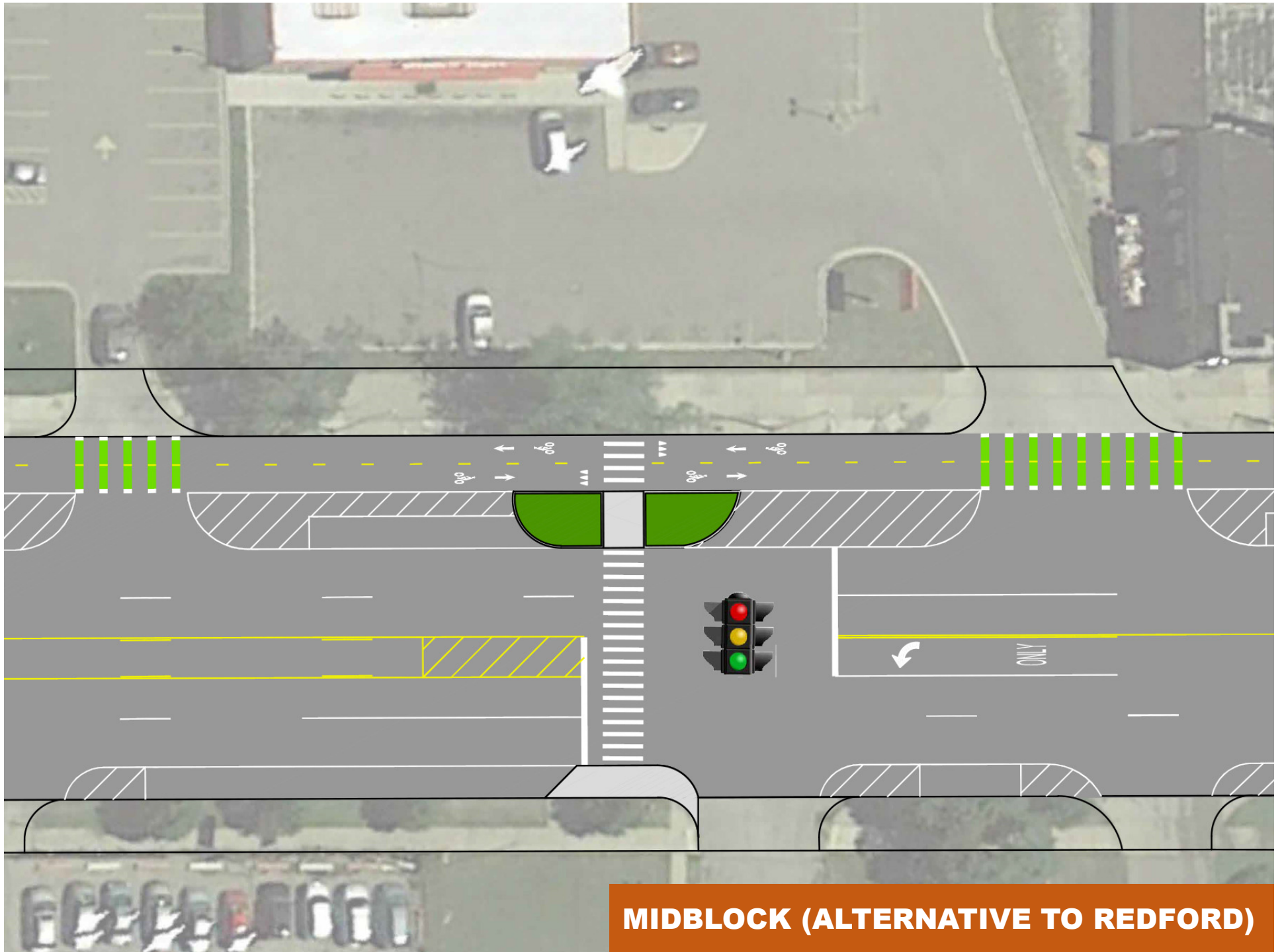
THANK YOU!

OPEN HOUSE REVIEW AND COMMENTS

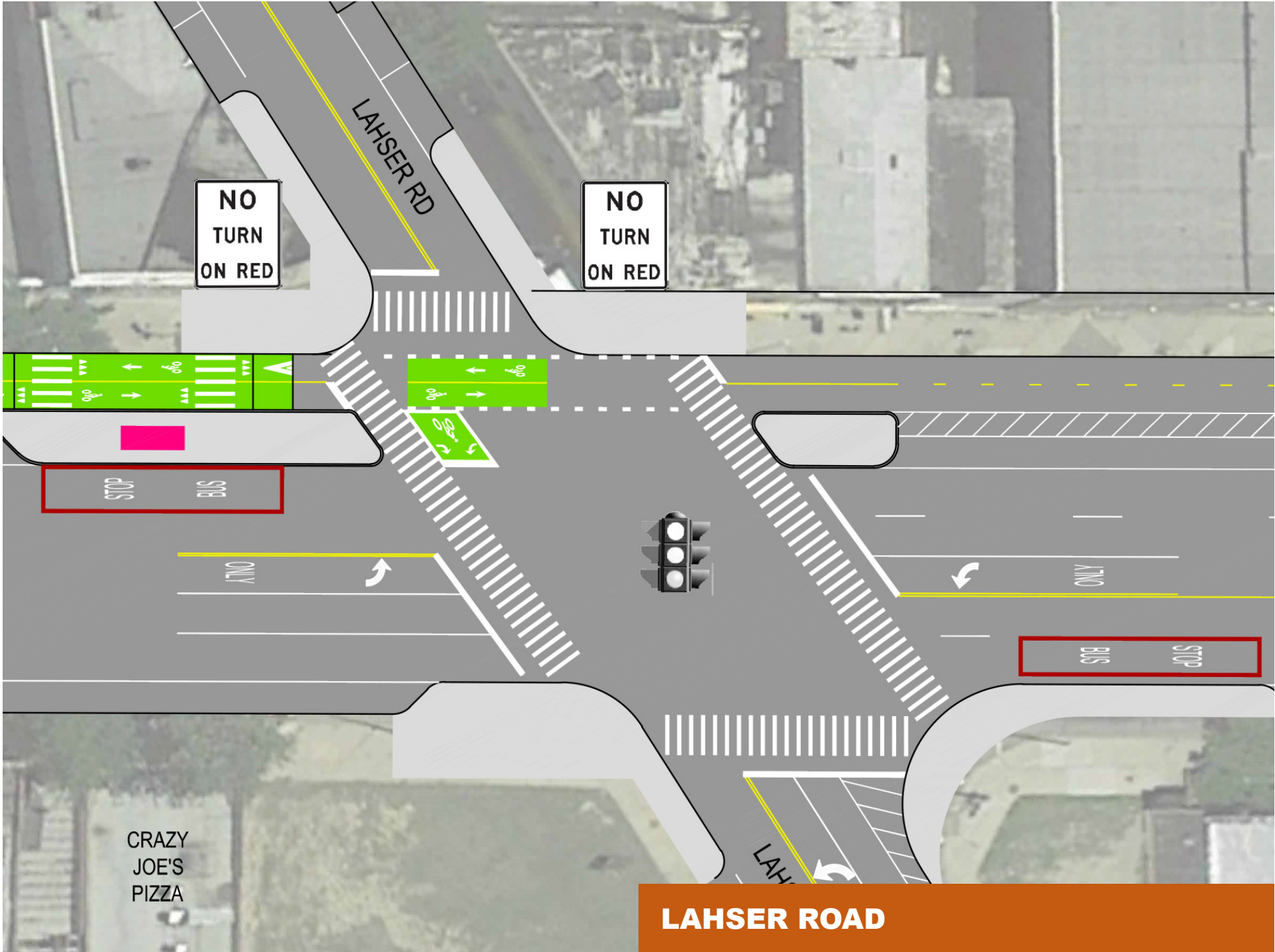


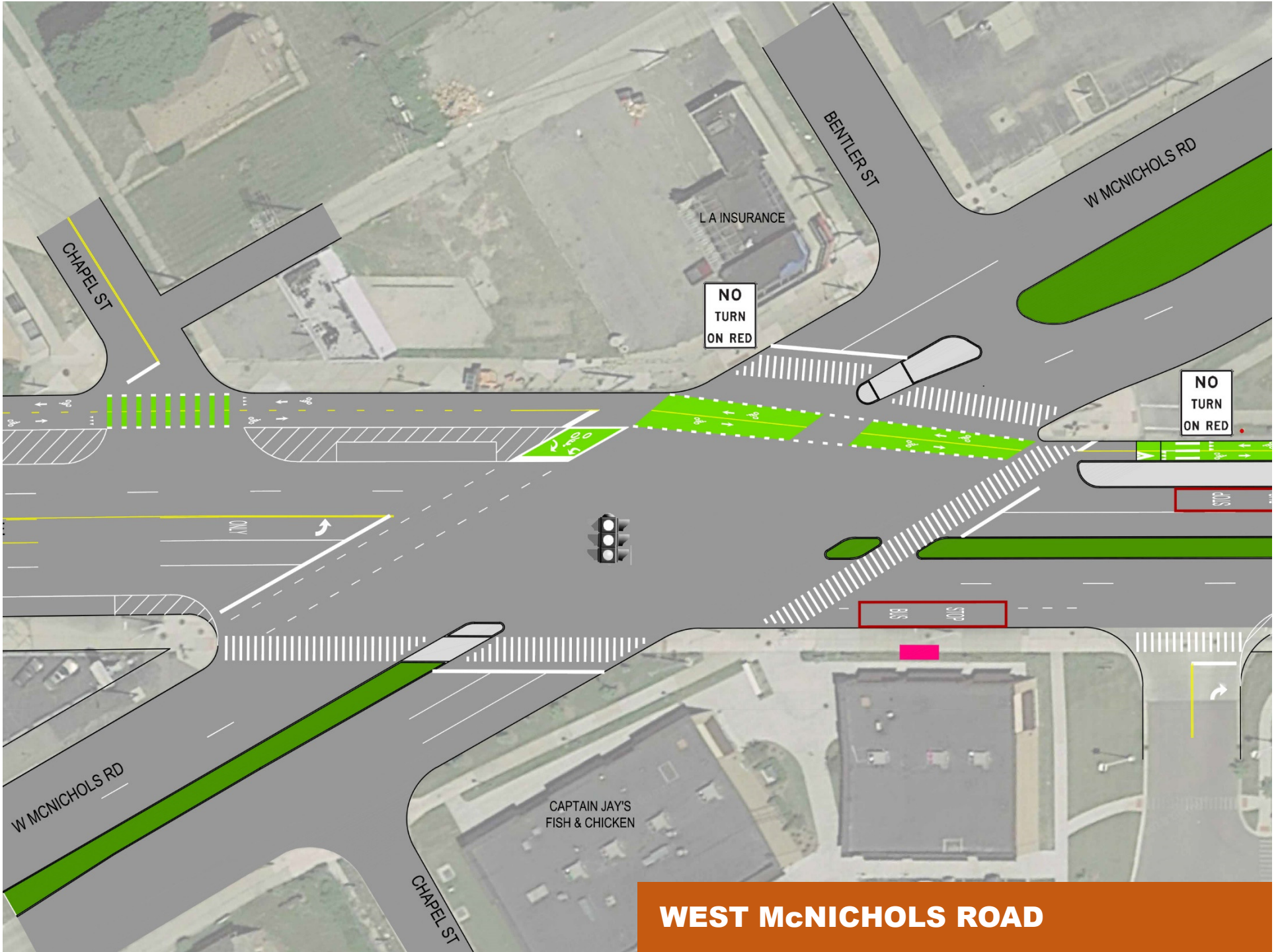
THANK YOU!

M-5
GRAND RIVER
INTERSECTIONS



MIDBLOCK (ALTERNATIVE TO REDFORD)





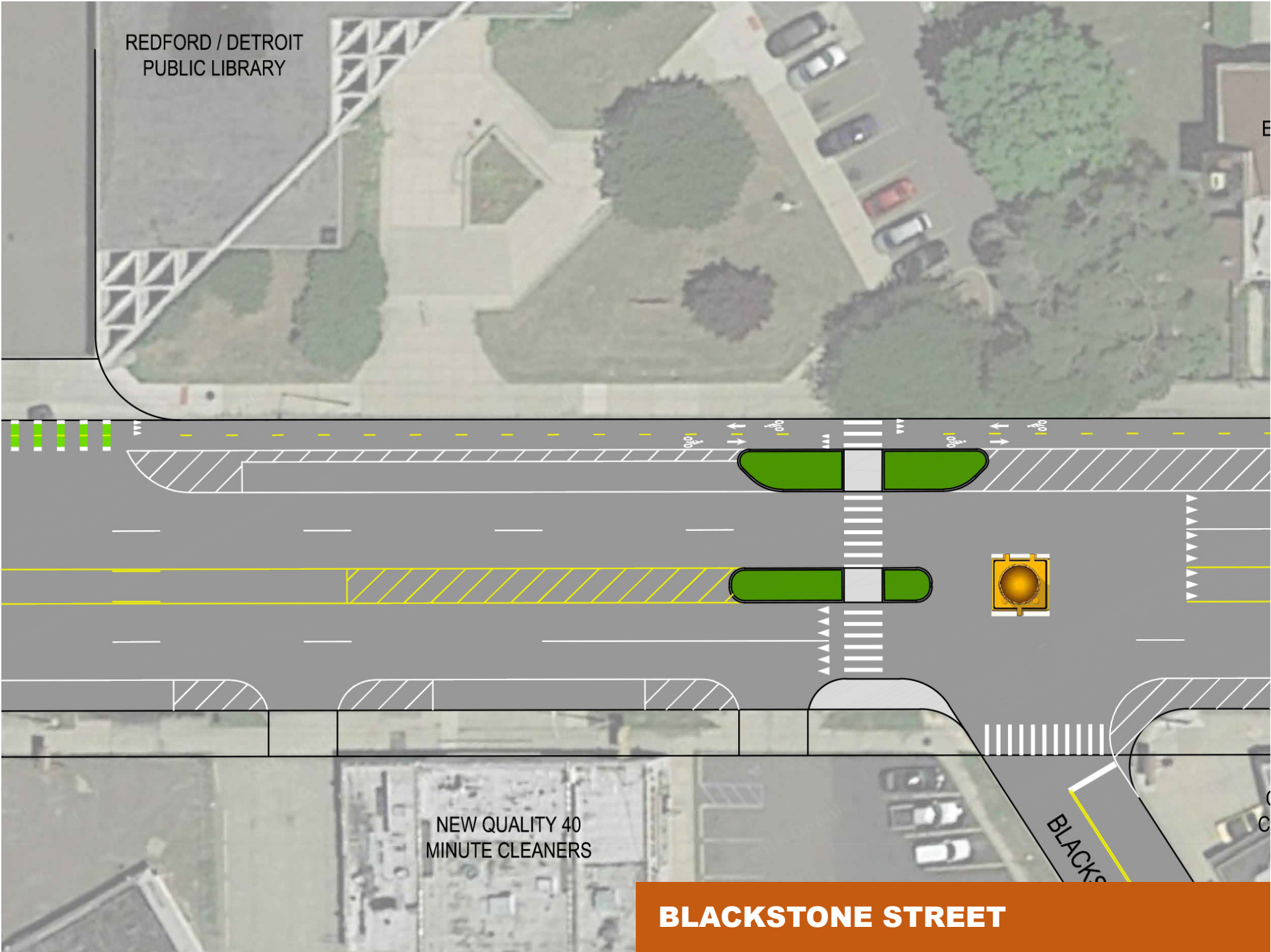
WEST McNICHOLS ROAD

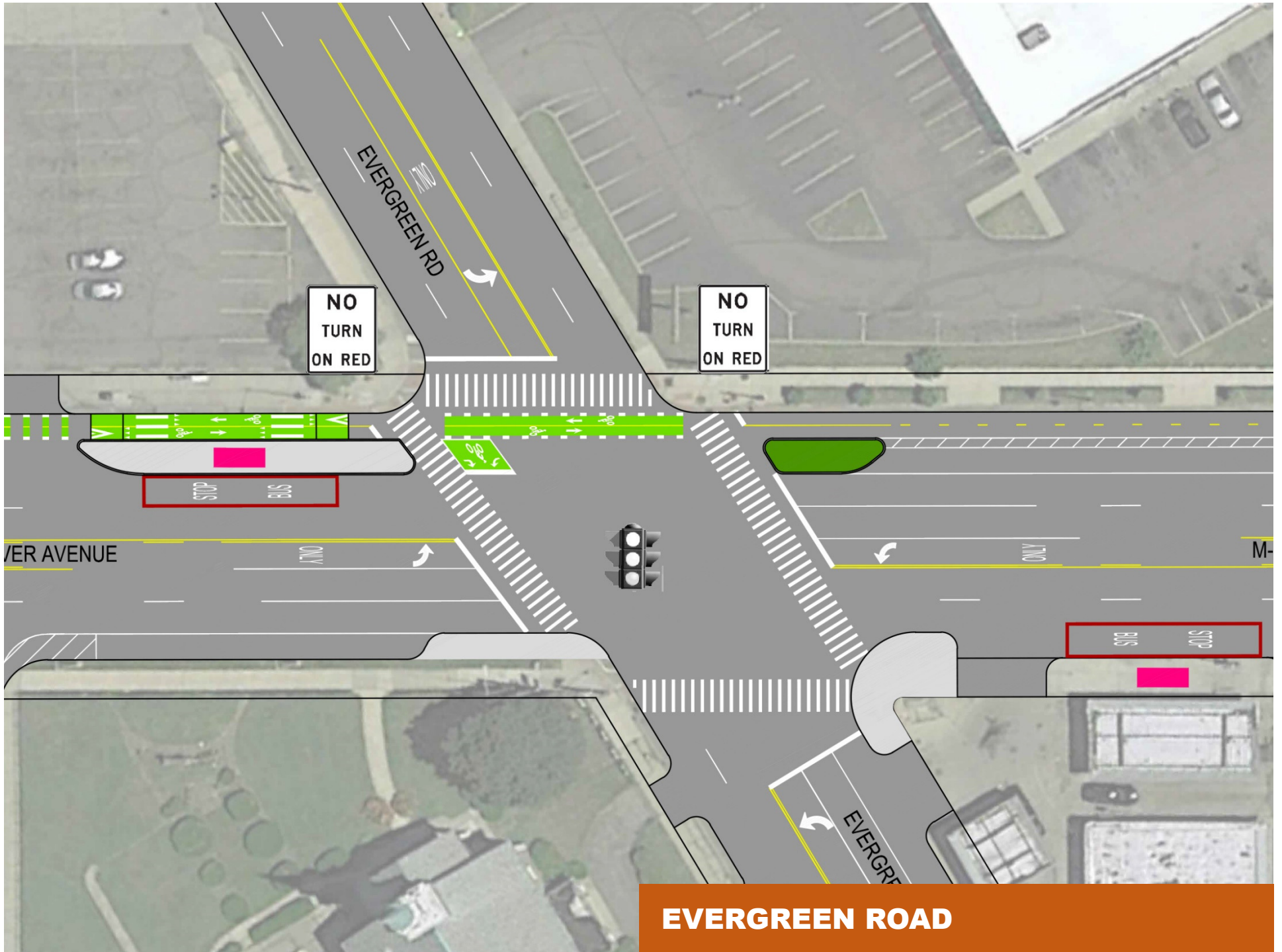
REDFORD / DETROIT
PUBLIC LIBRARY

NEW QUALITY 40
MINUTE CLEANERS

BLACKS

BLACKSTONE STREET

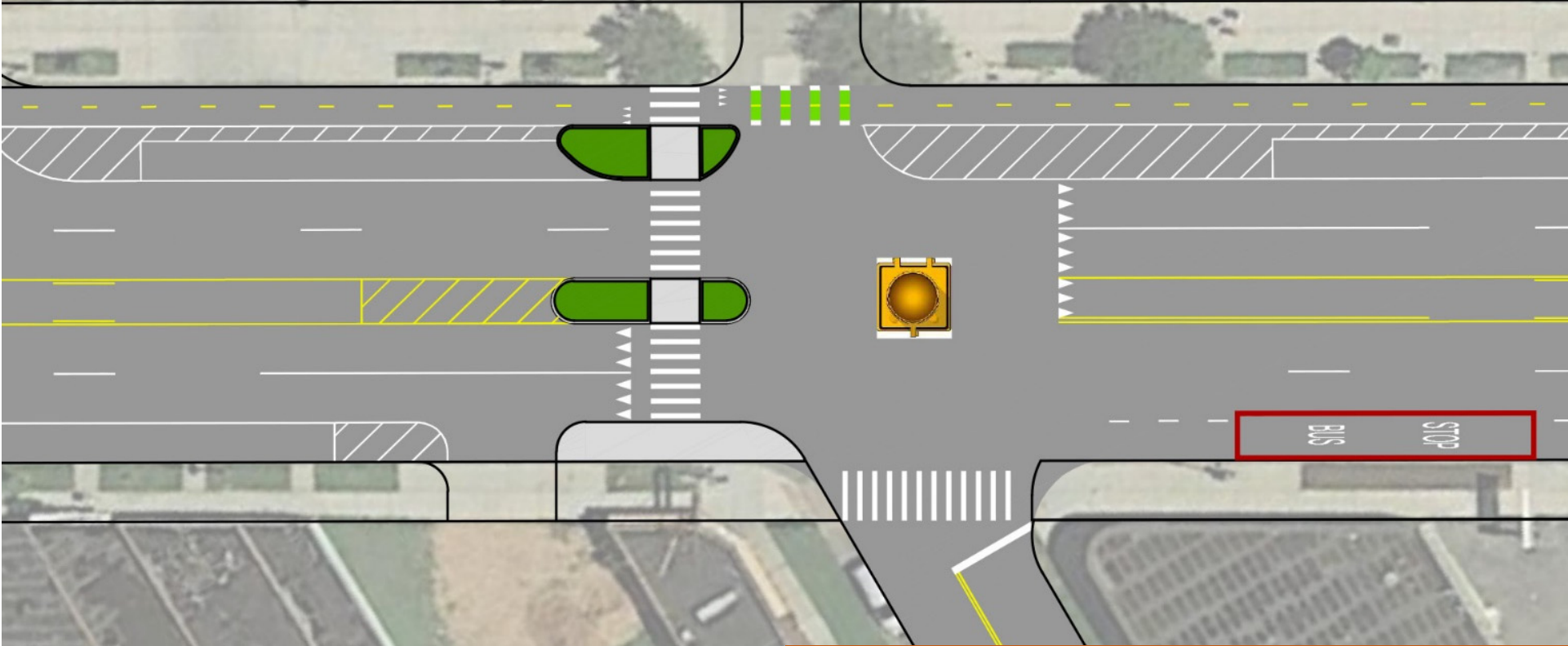




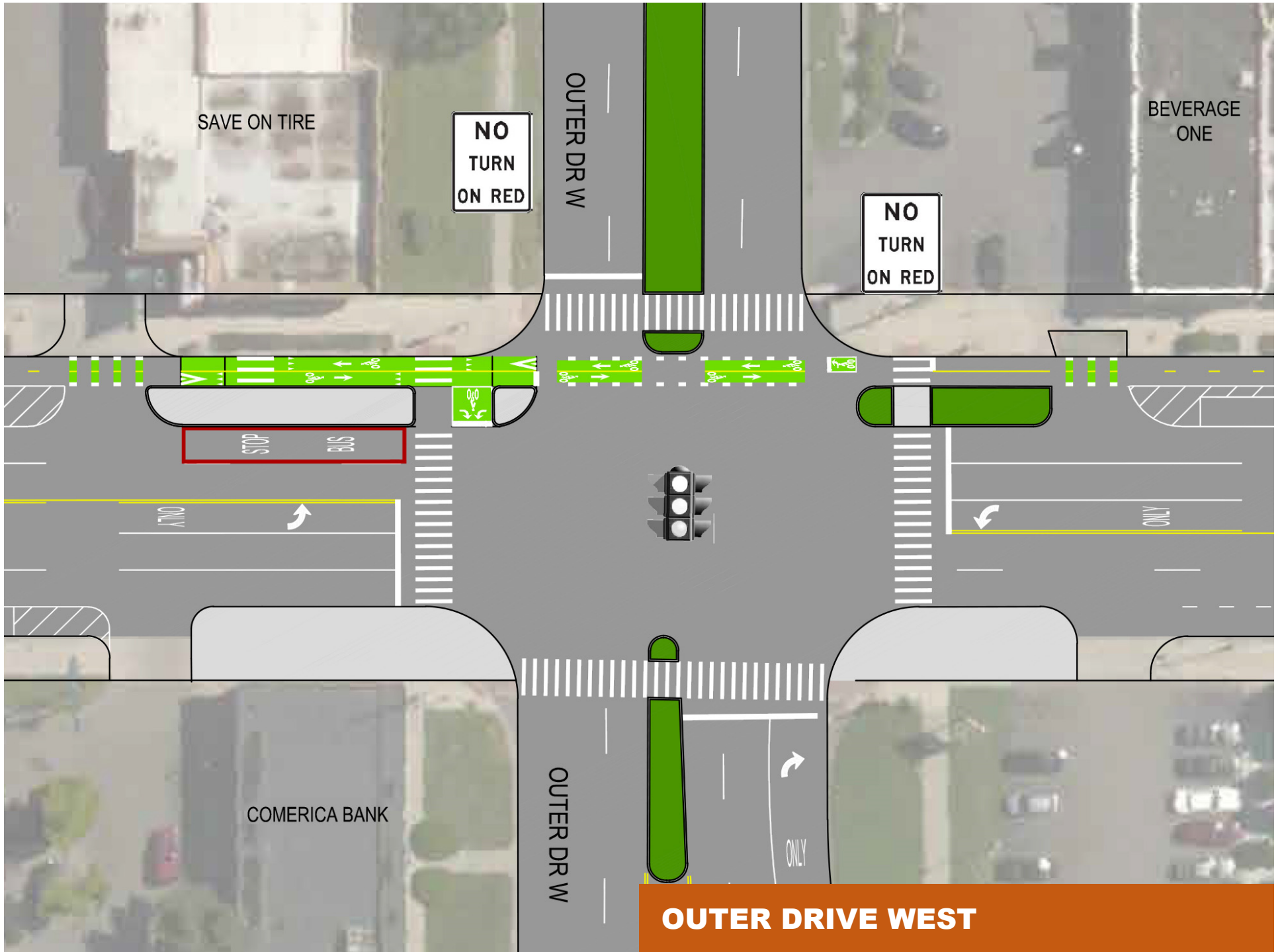
EVERGREEN ROAD



PAGES BOOKSHOP



AUBURN STREET



SAVE ON TIRE

**NO
TURN
ON RED**

OUTER DR W

BEVERAGE ONE

**NO
TURN
ON RED**

STOP BUS

ONLY

ONLY

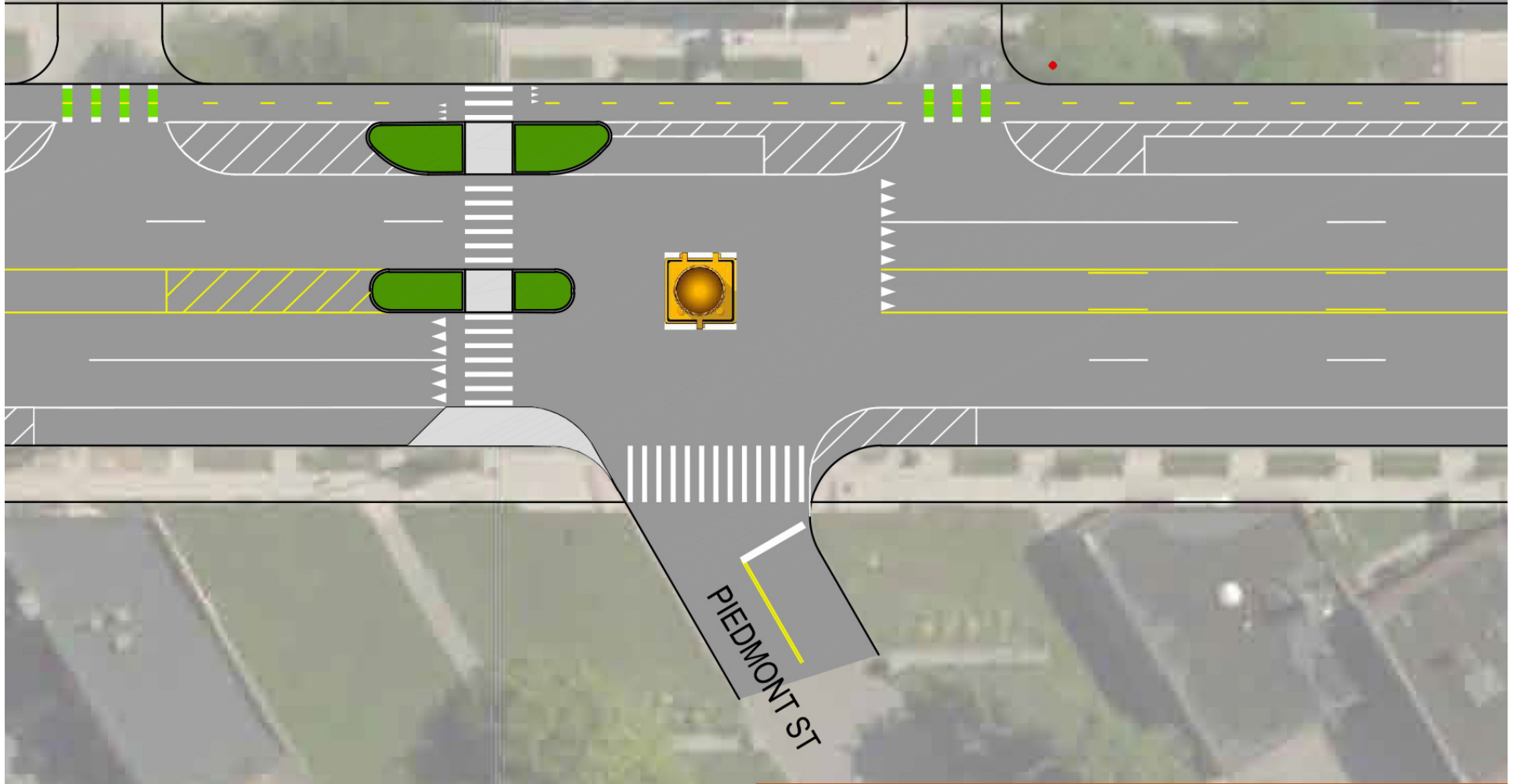
COMERICA BANK

OUTER DR W

ONLY

OUTER DRIVE WEST

ALWAYS
BREWING
DETROIT



PIEDMONT STREET

LITTLE
CESARS
PIZZA

VILLAGE
LIQUOR
SHOPPE

NO
TURN
ON RED

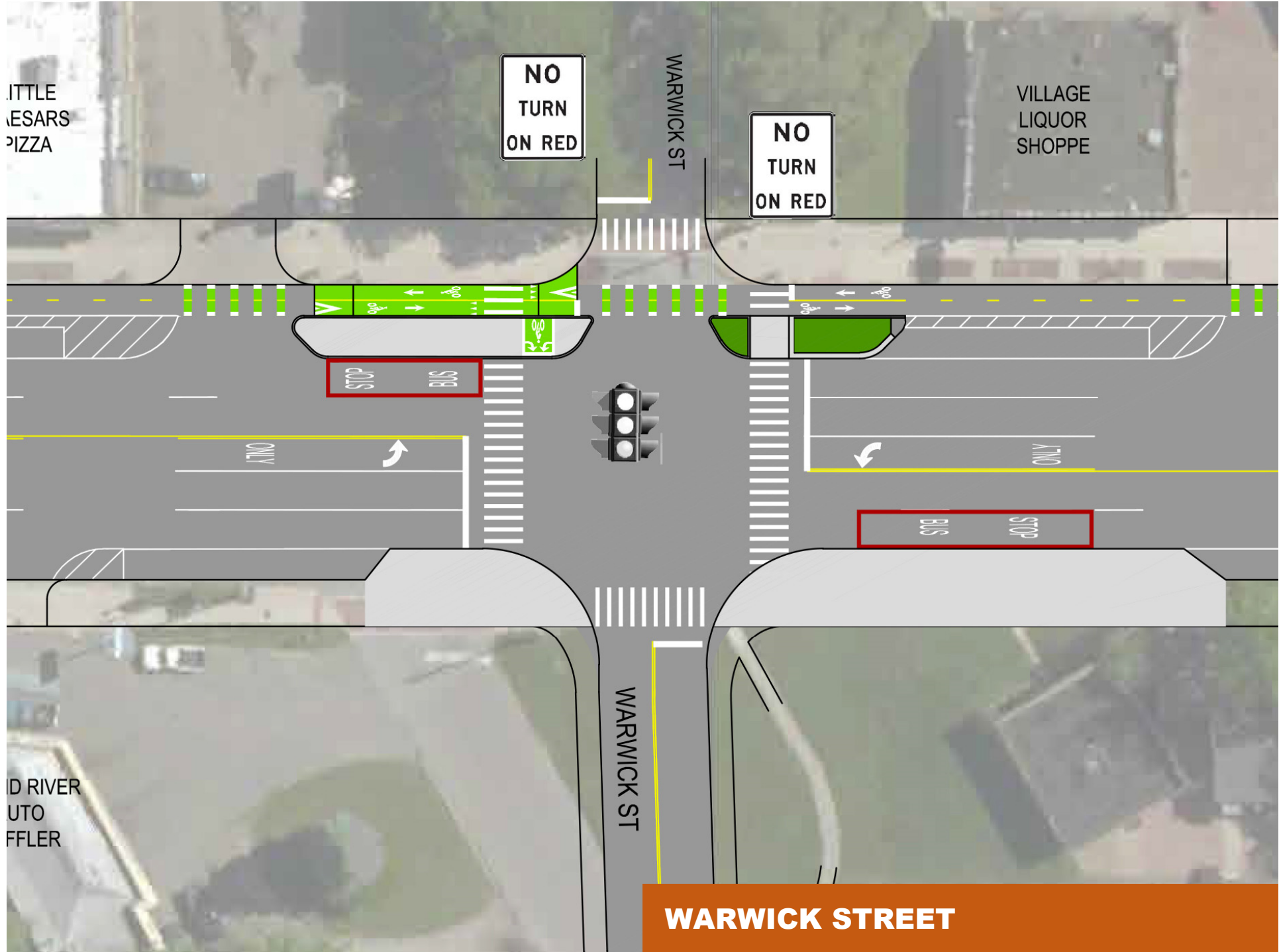
NO
TURN
ON RED

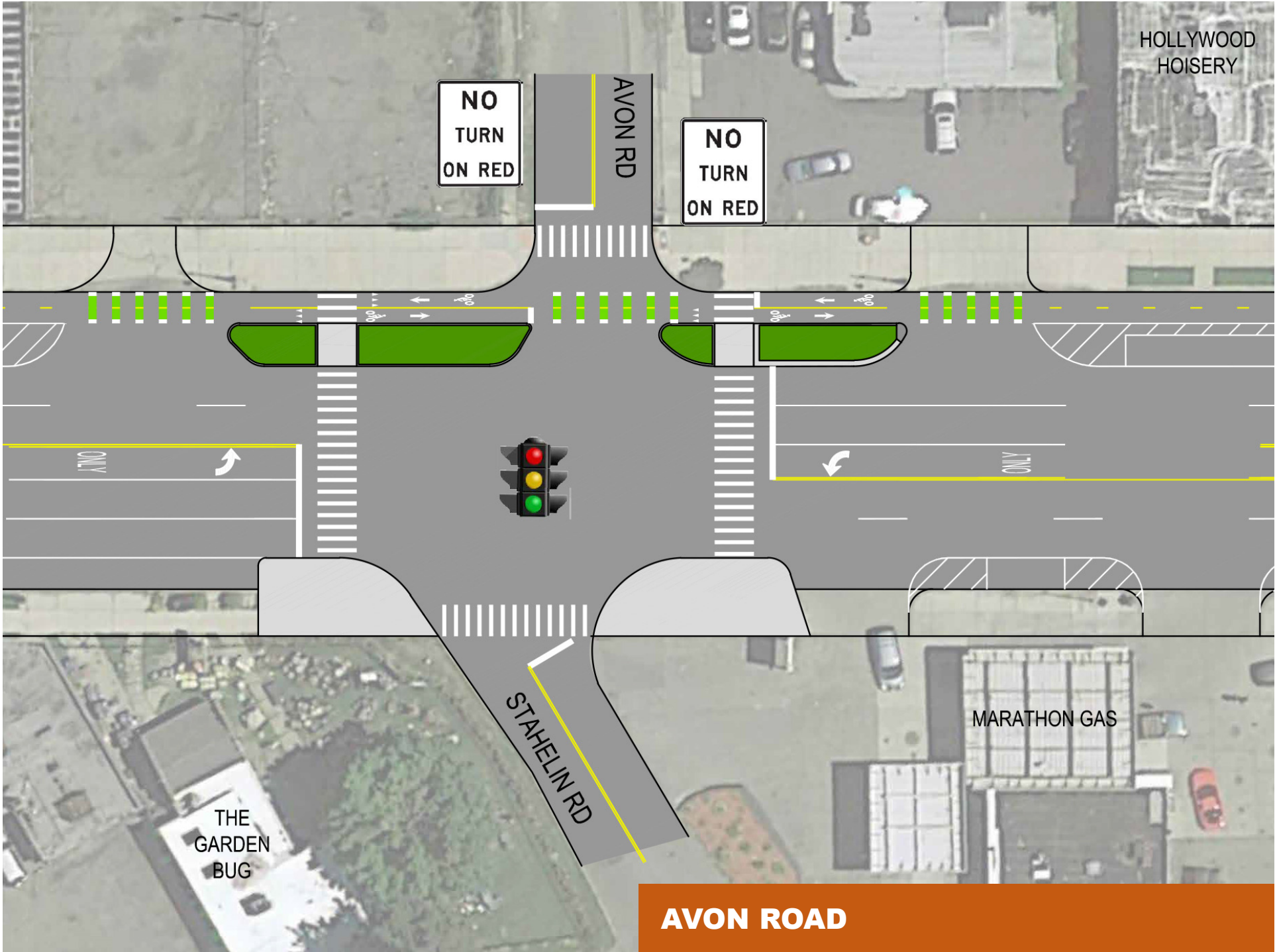
WARWICK ST

WARWICK ST

OLD RIVER
AUTO
OFFLER

WARWICK STREET





HOLLYWOOD
HOISERY

NO
TURN
ON RED

AVON RD

NO
TURN
ON RED

ONLY



ONLY



THE
GARDEN
BUG

MARATHON GAS

STAHELIN RD

AVON ROAD

CVS PHARMACY

METRO
FISH &
SEAFOOD



CVS / ROYAL FRESH MARKET